

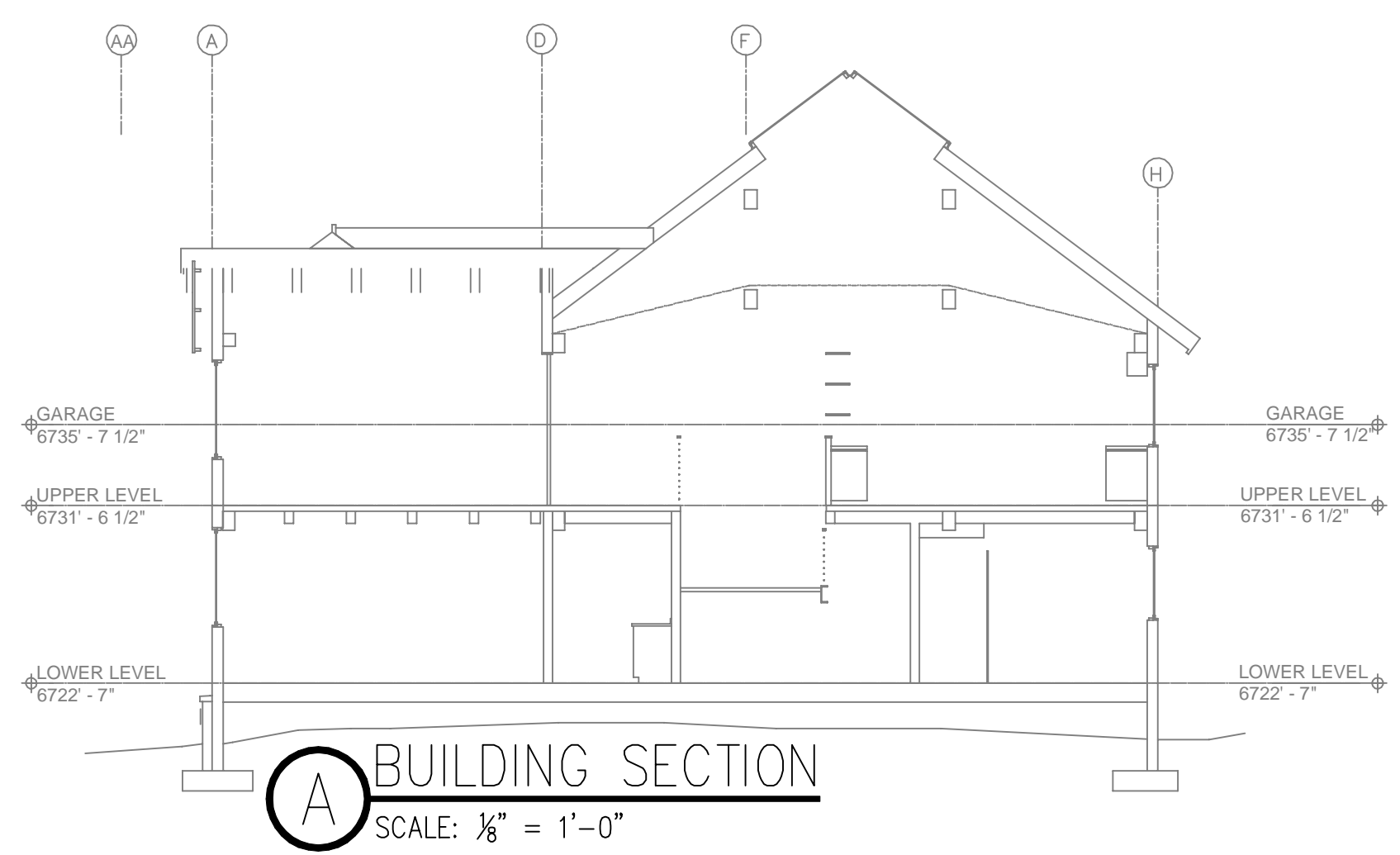
LOWER LEVEL FIRE SPRINKLER PLAN
 SCALE: 1/8" = 1'-0"

SPRINKLER HEAT ZONES:

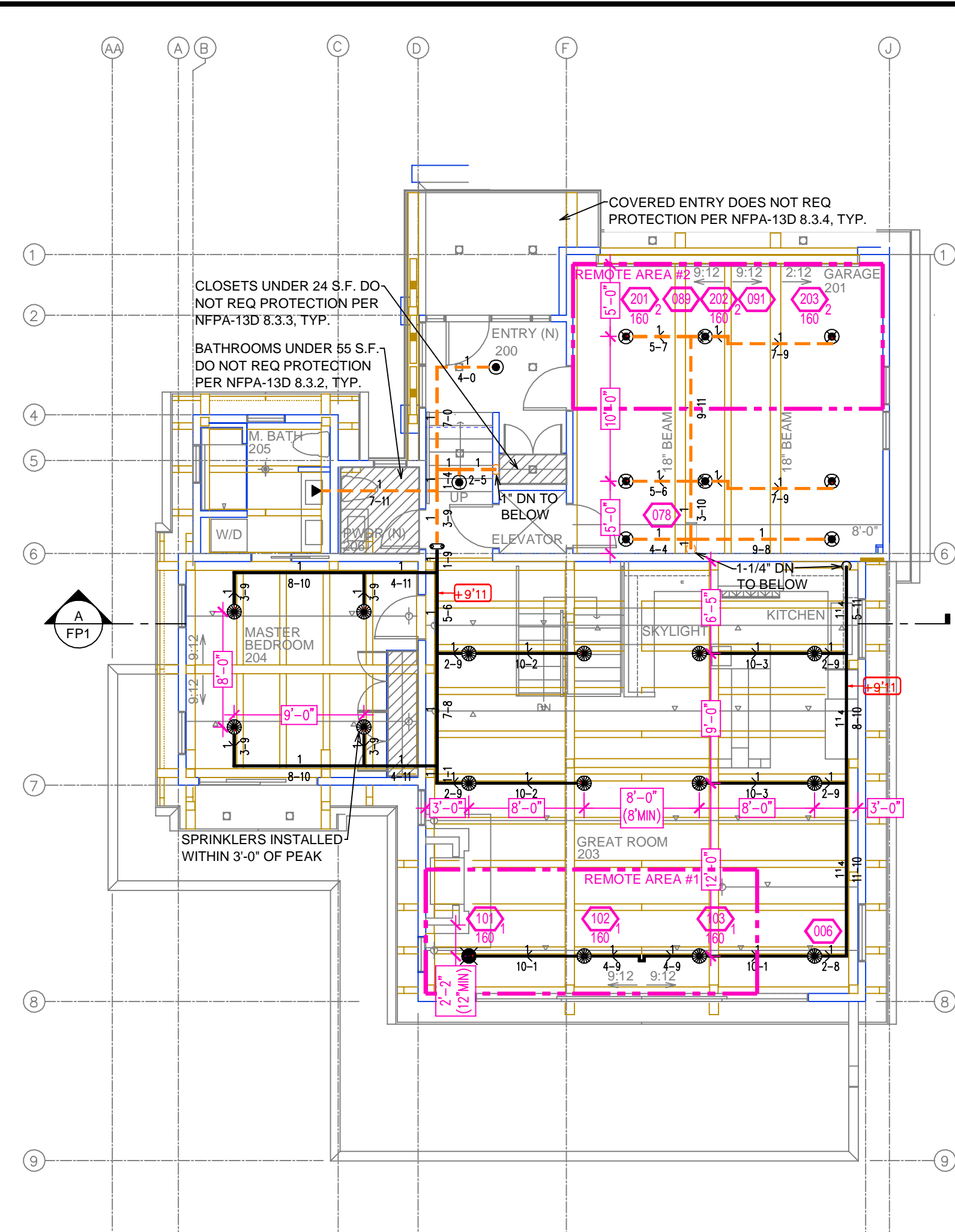
HEAT SOURCE:	ORDINARY TEMP. SPRINKLER	INTERMEDIATE TEMP. SPRINKLER
SIDE OF OPEN OR RECESSED FIRE PLACE	36"	12"
FRONT OF RECESSED FIRE PLACE	60"	36"
COAL OR WOOD BURNING STOVE	42"	12"
RANGE/OVEN, HOT AIR FLUES & UNINSULATED HOT WATER PIPES & 250-499 WATT LIGHTS	18"	9"
SIDE OF CEILING OR WALL MOUNTED HOT AIR DIFFUSERS	12"	6"
FRONT OF WALL MOUNTED HOT AIR DIFFUSERS	24"	12"
HOT WATER HEATER, FURNACE, LIGHT FIXTURE 0-250 WATT	36"	18"
	6"	3"

NFPA 13 - Table 9.2.2.1(a) Maximum Distance Between Hangers (ft-in.)

Nominal Pipe Size (in.)	Nominal Pipe Size (m.)										
	1/2	3/4	1	1 1/4	1 1/2	2	2 1/2	3	4	6	8
Steel Pipe except threaded	N/A	12-0	12-0	15-0	15-0	15-0	15-0	15-0	15-0	15-0	15-0
Threaded lightwall steel pipe	N/A	12-0	12-0	15-0	15-0	15-0	N/A	N/A	N/A	N/A	N/A
Copper tube	8-0	8-0	10-0	10-0	12-0	12-0	15-0	15-0	15-0	15-0	15-0
CPVC	5-6	6-0	6-6	7-0	8-0	9-0	10-0	N/A	N/A	N/A	N/A



BUILDING SECTION
 SCALE: 1/8" = 1'-0"



UPPER LEVEL FIRE SPRINKLER PLAN
 SCALE: 1/8" = 1'-0"

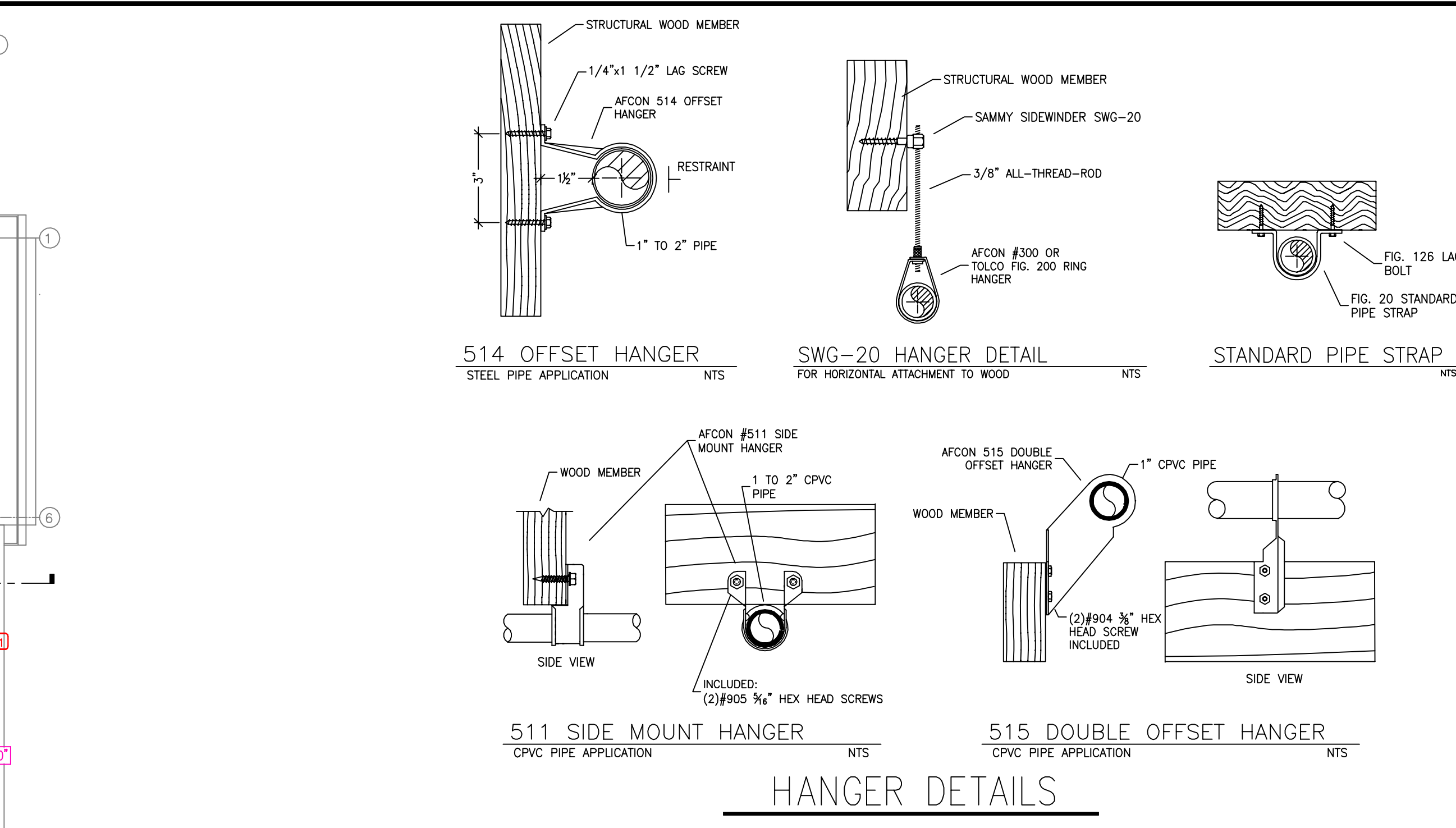
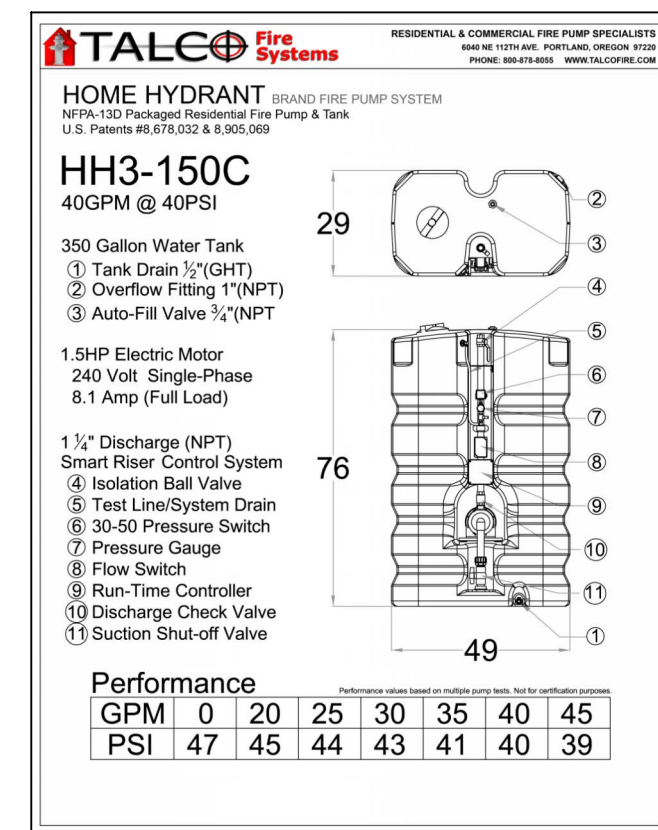
PROJECT SUMMARY:

PROJECT NAME: VIALE RESIDENCE
 PROJECT ADDRESS: 1008 SKYLINE DR, TAHOE CITY, CA
 APN: 083-470-026
 PROJECT TYPE: NEW T.I.
 TYPE OF CONSTRUCTION: V
 OCCUPANCY GROUP(S): R3
 OCCUPIED LEVELS: 2
 TOTAL SPRINKLERED AREA: 3775 SQ. FT.
 NFPA CODE REQUIREMENT: NFPA 13 NFPA 13R NFPA 13D
 NUMBER OF SYSTEMS: 1
 SYSTEM TYPE(S): WET ANTI-FREEZE DRY PREACTION
 TOTAL SPRINKLERS: 45
 SPECIAL NOTES: SEE FIRE SPRINKLER NOTES THIS SHEET

SPRINKLER SPACING

- A SINGLE PENDENT SPRINKLER MAY BE SPACED AT A MAXIMUM OF 14'x14' (196 SQ. FT.) OR UP TO 7' OFF A WALL (MINIMUM 8'-0" BETWEEN SPRINKLERS)
- TWO OR MORE PENDENTS IN COMPARTMENT SHALL BE SPACED AT A MAXIMUM OF 12'x12' (144 SQ. FT.) OR UP TO 6' OFF A WALL UNO. (MINIMUM 8'-0" BETWEEN SPRINKLERS)
- TWO OR MORE SIDEWALLS IN COMPARTMENT SHALL BE SPACED AT A MAXIMUM OF 14'x14' (196 SQ. FT.) OR UP TO 7' OFF A WALL UNO. (MINIMUM 8'-0" BETWEEN SPRINKLERS)
- SPRINKLERS SHALL BE MEASURED AT PERPENDICULAR ANGLES TO WALLS AND ALONG THE SLOPES OF CEILINGS.

THIS FIRE SPRINKLER SYSTEM UTILIZES THE NOBLE COMPANY FIREFIGHTER ELIMINATOR ANTI-FREEZE SOLUTION



REMOTE AREA 1	REMOTE AREA 2	REMOTE AREA 3	REMOTE AREA 4
<p>Hydraulically Calculated System</p> <p>This system as shown on Fire Protection Plan company print no. FFP1 dated 4/29/2026 for [VIALE RESIDENCE] at [GREAT ROOM] contract no. [] is designed to discharge at a rate of 0.05 gpm (L/min) per sq ft (m²) of floor area over a maximum area of [] sq ft (m²) when supplied with water at the rate of 26.2 gpm (L/min) at 34.8 psi (bars) at the base of the riser. Hose stream allowance of 0 gpm (L/min) is included in the above.</p> <p>Occupancy classification: 130 LIGHT HAZARD Commodity classification: N/A Maximum storage height: N/A Safety factor: 8.9</p>	<p>Hydraulically Calculated System</p> <p>This system as shown on Fire Protection Plan company print no. FFP1 dated 4/29/2026 for [VIALE RESIDENCE] at [GARAGE] contract no. [] is designed to discharge at a rate of 0.05 gpm (L/min) per sq ft (m²) of floor area over a maximum area of [] sq ft (m²) when supplied with water at the rate of 26.3 gpm (L/min) at 28.3 psi (bars) at the base of the riser. Hose stream allowance of 0 gpm (L/min) is included in the above.</p> <p>Occupancy classification: 130 LIGHT HAZARD Commodity classification: N/A Maximum storage height: N/A Safety factor: 15.6</p>	<p>Hydraulically Calculated System</p> <p>This system as shown on Fire Protection Plan company print no. FFP1 dated 4/29/2026 for [VIALE RESIDENCE] at [BEDROOM 2] contract no. [] is designed to discharge at a rate of 0.05 gpm (L/min) per sq ft (m²) of floor area over a maximum area of [] sq ft (m²) when supplied with water at the rate of 32.4 gpm (L/min) at 31.8 psi (bars) at the base of the riser. Hose stream allowance of 0 gpm (L/min) is included in the above.</p> <p>Occupancy classification: 130 LIGHT HAZARD Commodity classification: N/A Maximum storage height: N/A Safety factor: 10.3</p>	<p>Hydraulically Calculated System</p> <p>This system as shown on Fire Protection Plan company print no. FFP1 dated 4/29/2026 for [VIALE RESIDENCE] at [BEDROOM 3] contract no. [] is designed to discharge at a rate of 0.05 gpm (L/min) per sq ft (m²) of floor area over a maximum area of [] sq ft (m²) when supplied with water at the rate of 32.1 gpm (L/min) at 25.8 psi (bars) at the base of the riser. Hose stream allowance of 0 gpm (L/min) is included in the above.</p> <p>Occupancy classification: 130 LIGHT HAZARD Commodity classification: N/A Maximum storage height: N/A Safety factor: 16.4</p>

SUBMITTAL

NO SPRINKLERS REQUIRED IN:
 BATHROOMS 55 SQ.FT. OR LESS IN AREA PER NFPA 13D SECTION 8.6.2
 CLOSETS 24 SQ.FT. OR LESS IN AREA PER NFPA 13D SECTION 8.6.3

PROJECT SQUARE FOOTAGES

LOWER FLOOR = 1884 S.F.
 UPPER FLOOR = 1891 S.F.

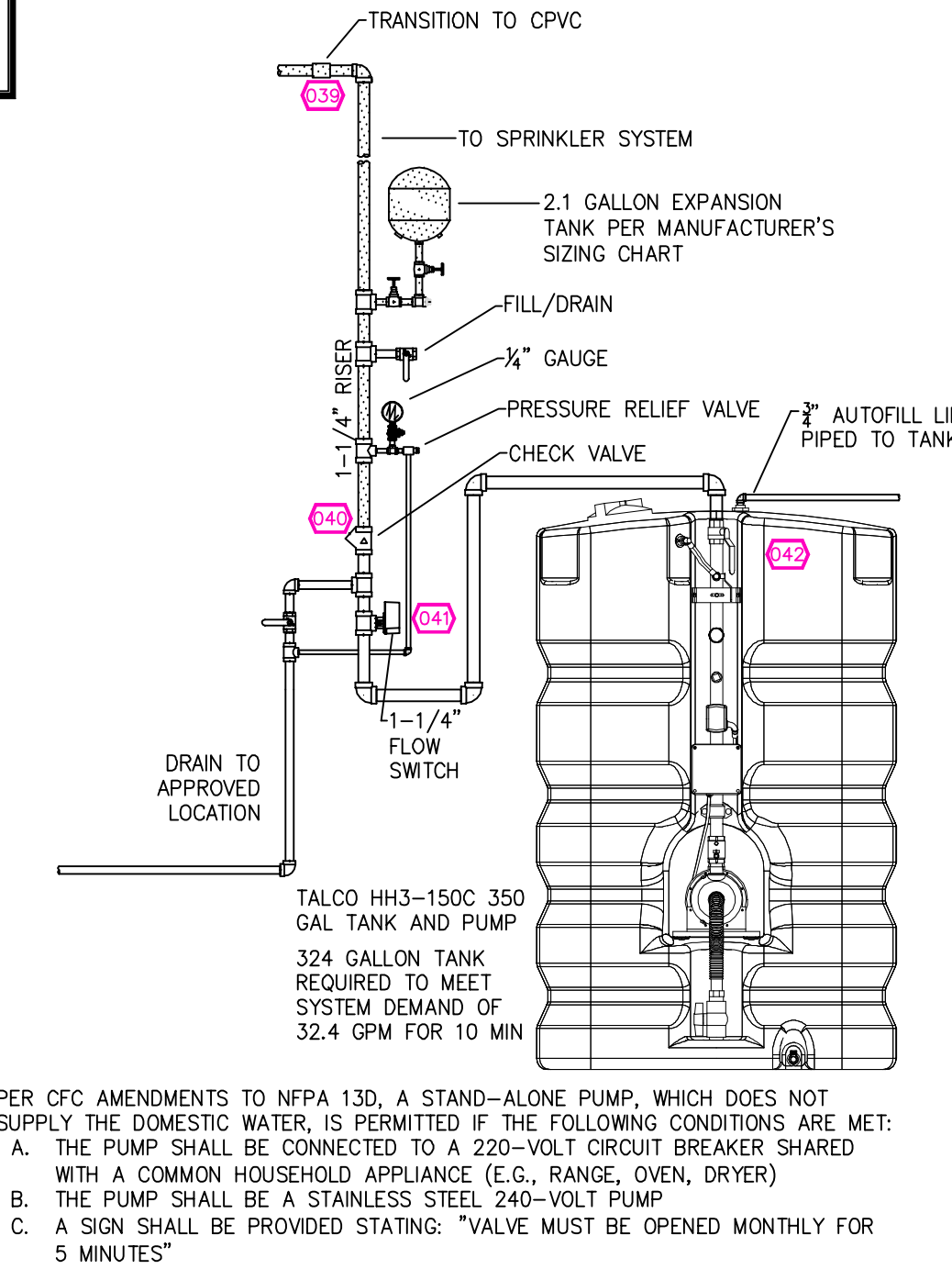
PIPE VOLUMES:

TOTAL PIPE FOOTAGE AND CAPACITY:
 1" CPVC = 192' (9.50 GAL)
 1-1/4" CPVC = 27' (2.14 GAL)
 1" STEEL = 234' (10.51 GAL)
 1-1/4" STEEL = 69' (5.36 GAL)

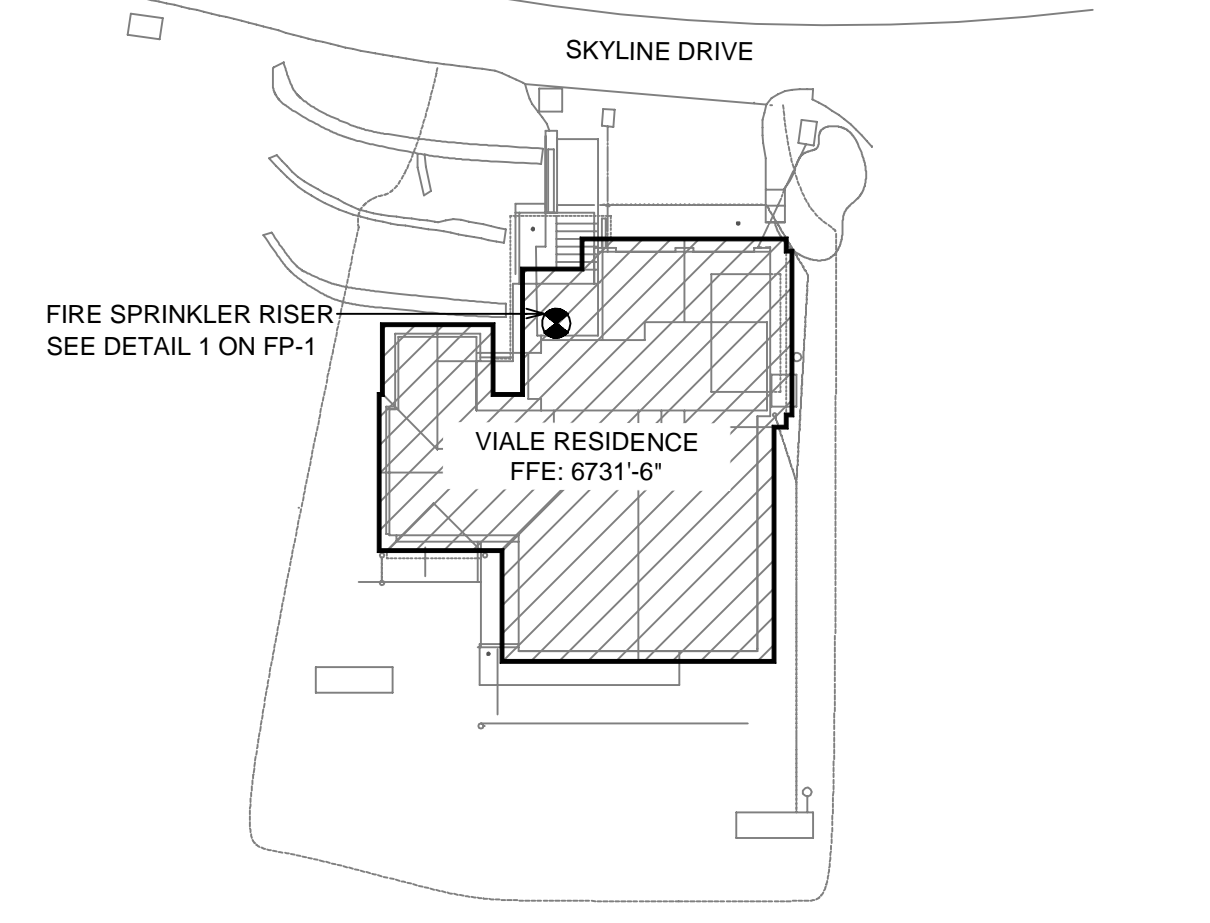
ADD 10% FOR DROPS AND PIPE SIZE DISCREPANCIES
 TOTAL VOLUME: ± 30.25 GALLONS

NFPA 13 - Table A.7.2.3 Capacity of 1 ft of pipe (Based on Actual Internal Pipe Diameter)

Nominal Pipe Diameter (in.)	Schedule 40	Schedule 10	CPVC
1	0.045	0.049	0.049
1 1/2	0.078	0.085	0.079
2	0.106	0.115	0.104
2 1/2	0.174	0.190	
3	0.248	0.283	



RISER DETAIL
 SCALE: 1/2" = 1'-0"



SITE PLAN
 SCALE: 1" = 25'-0"

NO.	DATE	REVISIONS	DRAWN	CHECKED

GENERAL CONTRACTOR: N TAHOE FIRE DISTRICT
ADDRESS: 222 FAIRWAY DR
CITY: TAHOE CITY, CA
PHONE: 530-583-6911
CONTACT:

AUTHORITY HAVING JURISDICTION:
ADDRESS: 2
CITY: 3
PHONE: 4

ARCHITECT: FIELD INSPECTIONS:
ADDRESS: 2
CITY: 3
PHONE: 4

FIRE SPRINKLER NOTES:

- THE PROPOSED FIRE SPRINKLER SYSTEM IS AN ANTI-FREEZE SYSTEM AND SHALL BE DESIGNED AND INSTALLED IN ACCORDANCE WITH NFPA 13D PIPING UNLESS OTHERWISE NOTED.
- THIS SPRINKLER SYSTEM IS HYDRAULICALLY CALCULATED IN ACCORDANCE WITH NFPA 13D TO PROVIDE 0.05 GPM PER SQ. FT. OVER THE MOST REMOTE AREA.
- THE NUMBER OF DESIGN SPRINKLERS SHALL INCLUDE ALL SPRINKLERS WITHIN A COMPARTMENT UP TO A MAXIMUM OF 2 SPRINKLERS.
- ALL SPRINKLER PIPING CONCEALED ABOVE CEILINGS SHALL BE CPVC.
- ALL DIMENSIONS SHOWN ARE CENTER TO CENTER U.O.N.
- ALL HANGERS SHALL BE INSTALLED IN ACCORDANCE WITH NFPA 13D AND/OR NFPA 13 REQUIREMENTS.
- HOLES THROUGH SOLID STRUCTURAL MEMBERS SHALL BE PERMITTED TO SERVE AS HANGERS FOR THE SUPPORT OF SYSTEM PIPING.
- ALL SYSTEM PIPING SHALL BE TESTED FOR LEAKAGE AT NORMAL SYSTEM OPERATING PRESSURE.
- THE OWNER SHALL BE RESPONSIBLE FOR MAINTAINING A MINIMUM TEMPERATURE OF 40° FAHRENHEIT TO PROTECT FROM FREEZING. THE SECTIONS OF THE SPRINKLER SYSTEM WHERE THERE IS NO ANTI-FREEZE IN THE PIPING (UPSTREAM OF THE RISER).

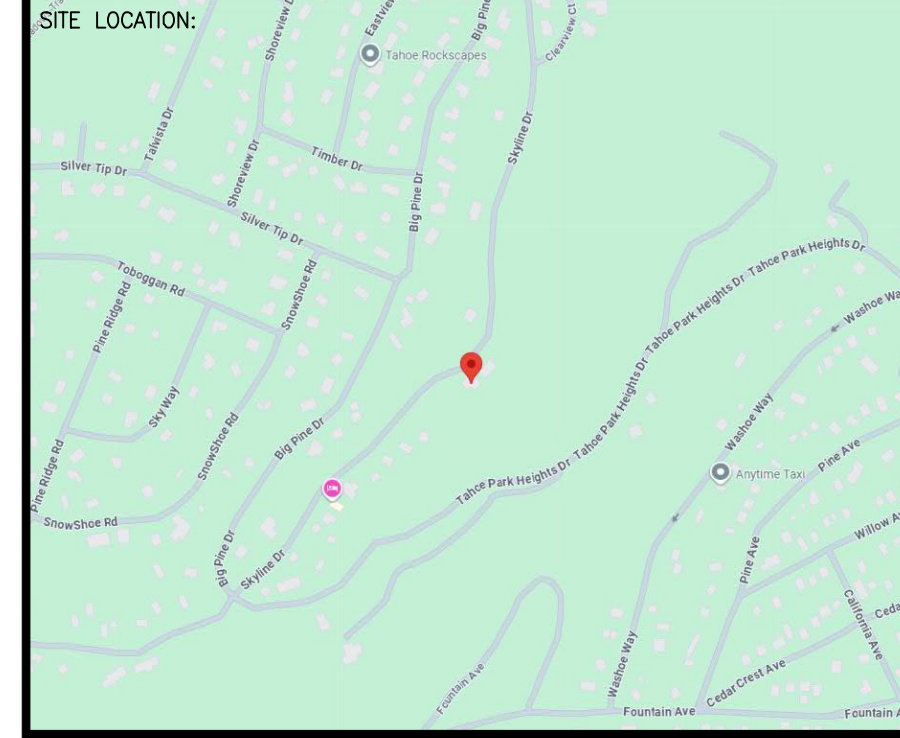
SPRINKLER HEAD LEGEND

SYM	QTY	TYPE	MFG.	MODEL#	NPT	K	TEMP	FINISH	S.I.N.
⊗	7	SEMI-RECESS	RELIABLE	FIRE530	1/2"	3.0	155	WHITE	R3511
⊗	10	SEMI-RECESS	RELIABLE	FIRE530	1/2"	3.0	175	WHITE	R3511
⊗	15	N/A	RELIABLE	FIRE530	1/2"	3.0	155	BRASS	R3511
⊗	1	N/A	RELIABLE	FIRE530	1/2"	3.0	175	BRASS	R3511
⊗	10	N/A	SENJU	FIRE544	1/2"	4.2	162	BRASS	SS4423
⊗	2	N/A	RELIABLE	FIRE544	1/2"	4.4	155	BRASS	R3531

45 TOTAL SPRINKLERS ON THIS SHEET

FIRE SPRINKLER SYMBOLS

- ⊗ AUTOMATIC SPRINKLER RISER +13" ELEV. BELOW DECK OR TOS
- ⊕ EARTHQUAKE BRACING +12'-9" ELEV. ABOVE FINISHED FLOOR
- ⊖ 2-WAY & 4-WAY
- ⊗ PIPE HANGER & TYPE DESIGNATION
- ⊕ HYDRAULIC REF PT
- ⊖ GRID OR THIRD CAP
- ⊕ GRID COUPLING
- ⊕ TYPICAL POINT OF CONNECTION (POC)
- ⊕ CHANGE ELEVATION UP
- ⊖ CHANGE ELEVATION DN
- ⊕ INSPECTORS TEST
- ⊖ AUX DRAIN
- ⊕ REVISION NOTATION
- ⊕ LOCAL ALARM



PROJECT NAME: FIRE SPRINKLER PLANS FOR
VIALE RESIDENCE
 1008 SKYLINE DRIVE
 TAHOE CITY, CA 96145

STAMP:

DRAWING TITLE: FIRE SPRINKLER PLAN

SCALE: 1/8" = 1'-0" **JOB NO.:** 26-6019
DRAWN BY: **DWG NO.:**
BORN ON DATE: 4/30/2026 **FP-1**
FILE: **SHEET 1 OF 1**