

- GENERAL NOTES**
1. SYSTEM INSTALLED PER NFPA 13 (2013 EDITION) AND STATE FIRE MARSHAL'S OFFICE REQUIREMENTS.
 2. ALL WELDING SHALL BE PER NFPA 511 (2011 EDITION) AND LISTED WELDING PROCEDURE SPECIFICATIONS.
 3. MINIMUM PIPE SIZE SHALL BE 1" NOMINAL PIPE SIZE.
 4. ALL WELDING SHALL BE DONE BY A LICENSED WELDER.
 5. ALL WELDING SHALL BE DONE TO BEGINS WITHOUT APPROVED SHOP DRAWINGS.
 6. ALL WELDING SHALL BE DONE BY A LICENSED WELDER.
 7. ALL WELDING SHALL BE DONE BY A LICENSED WELDER.
 8. ALL WELDING SHALL BE DONE BY A LICENSED WELDER.
 9. ALL WELDING SHALL BE DONE BY A LICENSED WELDER.
 10. ALL WELDING SHALL BE DONE BY A LICENSED WELDER.
 11. ALL WELDING SHALL BE DONE BY A LICENSED WELDER.
 12. ALL WELDING SHALL BE DONE BY A LICENSED WELDER.

NO.	REVISIONS	DATE	APPROVAL STAMPS

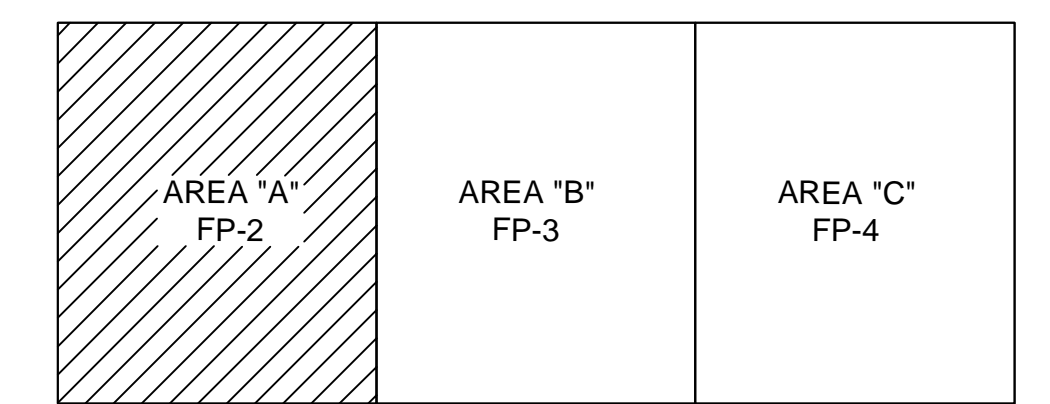
Design Area #: 1 HAZARD: STRG
 Zone: 1 System Type: WET
 Location: ZONE 1

Flowing Outlets: 22
 Density: 0.30 Remote Area: 2000
 Req'd @ Base of Riser
 Flow 713.7 gpm @ 92.7psi
 Req'd @ Sources
 Flow 1213.7 gpm @ 31.5psi
 Calculation Safety: 12.3psi
 Includes 500 gpm Hose allowance

NOTE: 0.30 GPM / 2000 SF PER
 14.2.4 AN FIGURE 14.2.4.2 -
 PROTECTION CRITERIA FOR
 FUTURE PALLETIZED,
 SOLID-PILED, CLASS I THROUGH
 CLASS IV COMMODITIES STORED
 OVER 12FT IN HEIGHT UP TO 20FT
 HIGH

GRID HAS BEEN PEAKED

KEY PLAN



SY#	CNT	POSITION	FINISH	TEMP	K	NPT	SIN	MFPS	MODEL#	ESSCUTCHON	SPACINGS
1	1040	UPRIGHT	BRASS	286	8.00	3/4"	V3462	VICTALIC	V24	NA	100 SF
2	1	PENDENT	CHROME	200	5.00	1/2"	V2708	VICTALIC	FL-OR	NA	225 SF
3	4	PENDENT	CHROME	200	11.20	3/4"	V3412	VICTALIC	FL-ECHJ	SEMI RECESSED	20 x 20
		TOTAL									

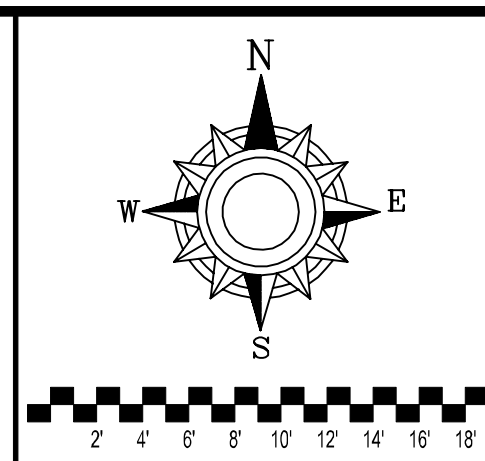
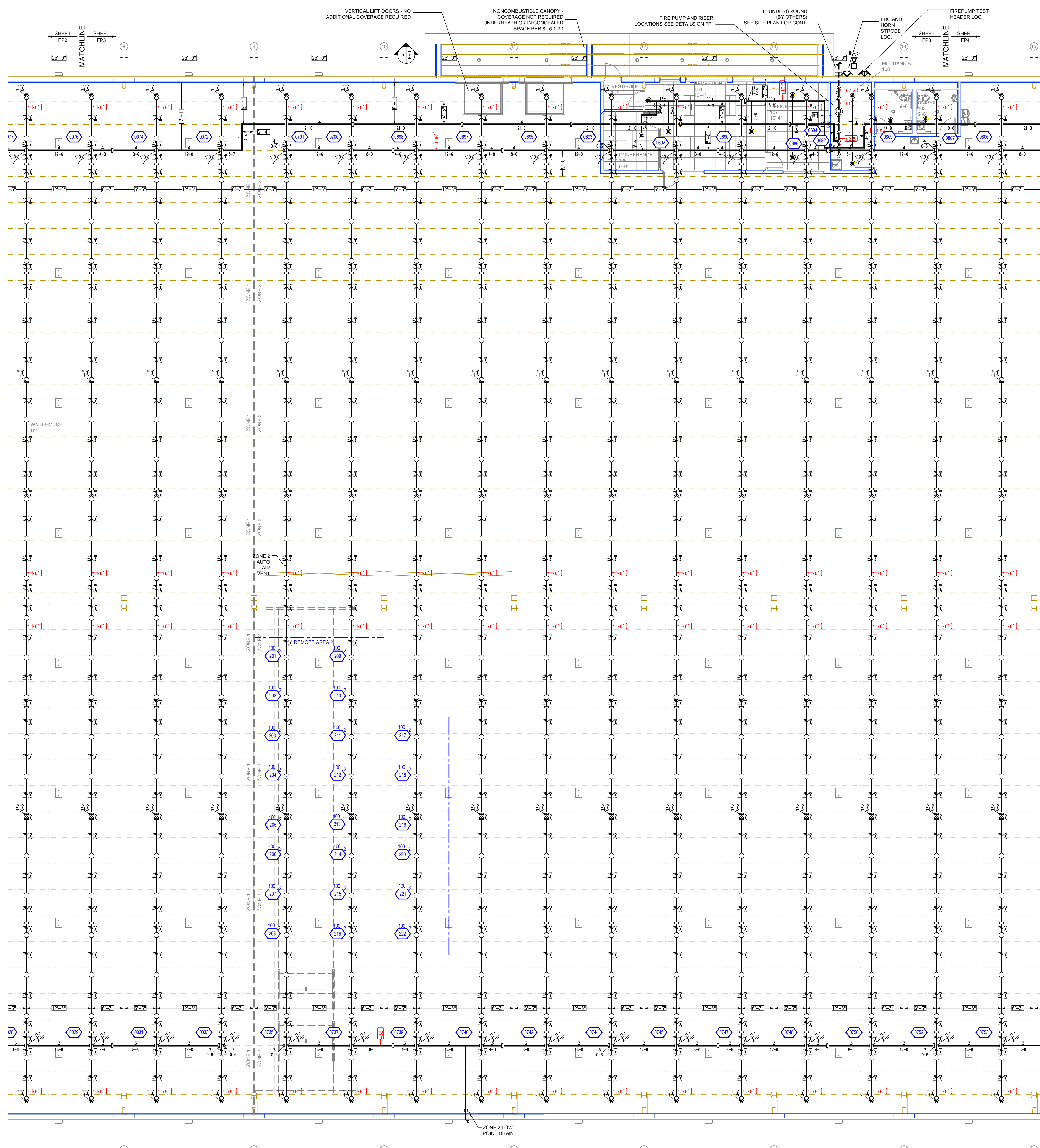
SPRINKLER HEAD LEGEND

AREA A FIRE SPRINKLER PLAN
 SCALE= 1/8" = 1'-0"

SYSTEM DESIGN NOTE:
 BUILDING SHALL CONTAIN MISCELLANEOUS STORAGE NO HIGHER THAN 12'-0" AT THIS TIME. THE SYSTEM HAS BEEN OVER DESIGNED TO ALLOW FOR PALLETIZED SOLID PILE OF CLASS I - IV COMMODITIES UP TO 20'-0" IF THE OWNER DECIDES TO STORE PRODUCT OVER 12'-0" IN THE FUTURE.

BECKER WAREHOUSE & RELOAD
 14219 132nd St SE
 BECKER, MN 55308

Drawing Title: FIRE PROTECTION PLAN
 Contract No.: C25-95
 Drawing Date: 11-26-25
 Scale: 1/8" = 1'-0"
 Drawn By: JVG
 Approval By: STATE FIRE MARSHAL DIV.
 SHEET NO. FP 2 of 4



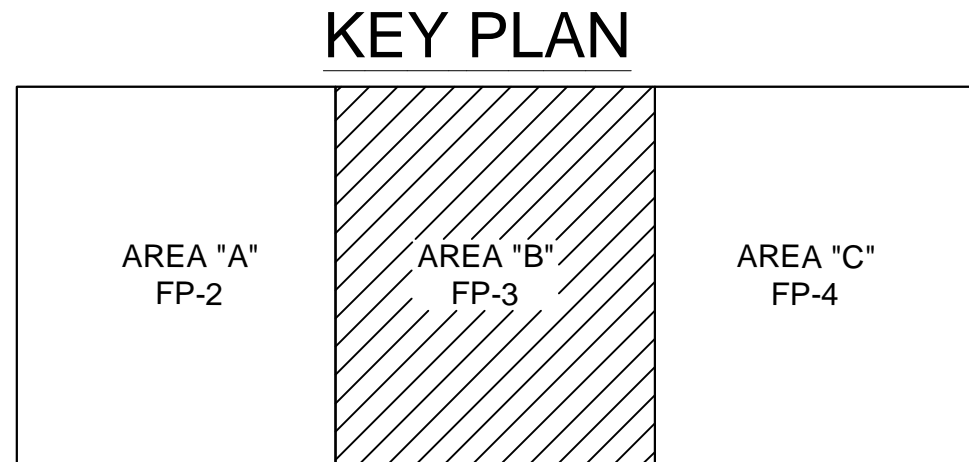
- GENERAL NOTES**
1. SYSTEM SHALL BE PER NFPA 13 (2010 EDITION) AND STATE FIRE MARSHAL'S OFFICE APPROVED LISTED.
 2. MINIMUM PIPE SIZE SHALL BE 1" NOMINAL PIPE SIZE.
 3. ALL WELDING SHALL BE PER NFPA 51 (2010 EDITION) APPROVED LISTED.
 4. ALL WELDING SHALL BE PER NFPA 51 (2010 EDITION) APPROVED LISTED.
 5. ALL WELDING SHALL BE PER NFPA 51 (2010 EDITION) APPROVED LISTED.
 6. ALL WELDING SHALL BE PER NFPA 51 (2010 EDITION) APPROVED LISTED.
 7. ALL WELDING SHALL BE PER NFPA 51 (2010 EDITION) APPROVED LISTED.
 8. ALL WELDING SHALL BE PER NFPA 51 (2010 EDITION) APPROVED LISTED.
 9. ALL WELDING SHALL BE PER NFPA 51 (2010 EDITION) APPROVED LISTED.
 10. ALL WELDING SHALL BE PER NFPA 51 (2010 EDITION) APPROVED LISTED.
 11. ALL WELDING SHALL BE PER NFPA 51 (2010 EDITION) APPROVED LISTED.

APPROVAL STAMPS

NO.	REVISIONS	DATE

Design Area # 2 HAZARD STRG
 Zone: 2 System Type: WET
 Location: ZONE 2
 Flowing Outlets: 22
 Density: 0.30 Remote Area: 2000
 Req'd @ Base of Riser
 Flow: 713.4 gpm @ 73.5psi
 Req'd @ Source
 Flow: 1213.4 gpm @ 12.3psi
 Calculation Safety: 31.6psi
 Includes 500 gpm Hose allowance

NOTE: 0.30 GPM / 2000 SF PER 14.2.4 AN FIGURE 14.2.4.2 - PROTECTION CRITERIA FOR FUTURE PALLETIZED, SOLID-PILED, CLASS I THROUGH CLASS IV COMMODITIES STORED OVER 12FT IN HEIGHT UP TO 20FT HIGH



SPRINKLER HEAD LEGEND

SYMB	CNT	POSITION	FINISH	TEMP	K	NPT	SIN	MPG	MODEL#	ESCUTCHEON	SPACING
○	1040	UPRIGHT	BRASS	286	8.00	3/4"	V3402	VICTAULIC	V34	NA	100 SF
●	0	PENDENT	CHROME	200	5.80	1/2"	V2788	VICTAULIC	FL-QR	NA	225 SF
■	6	PENDENT	CHROME	200	11.20	3/4"	V3412	VICTAULIC	FL-EGLH	SEMI RECESSED	20 x 20
	1050	TOTAL									

AREA B FIRE SPRINKLER PLAN
 SCALE= 1/8" = 1'-0"

SYSTEM DESIGN NOTE:
 BUILDING SHALL CONTAIN MISCELLANEOUS STORAGE NO HIGHER THAN 12'-0" AT THIS TIME. THE SYSTEM HAS BEEN OVER DESIGNED TO ALLOW FOR PALLETIZED SOLID PILE OF CLASS I - IV COMMODITIES UP TO 20'-0" IF THE OWNER DECIDES TO STORE PRODUCT OVER 12'-0" IN THE FUTURE.

FIRE PROTECTION PLAN

BECKER WAREHOUSE & RELOAD
 14219 132nd St SE
 BECKER, MN 55308

Contract No: **C25-95**
 Drawing Date: 11-26-25
 Scale: 1/8" = 1'-0"
 Drawn By: JVG
 Approval By: STATE FIRE MARSHAL DIV.
 SHEET NO. **FP 3 of 4**

