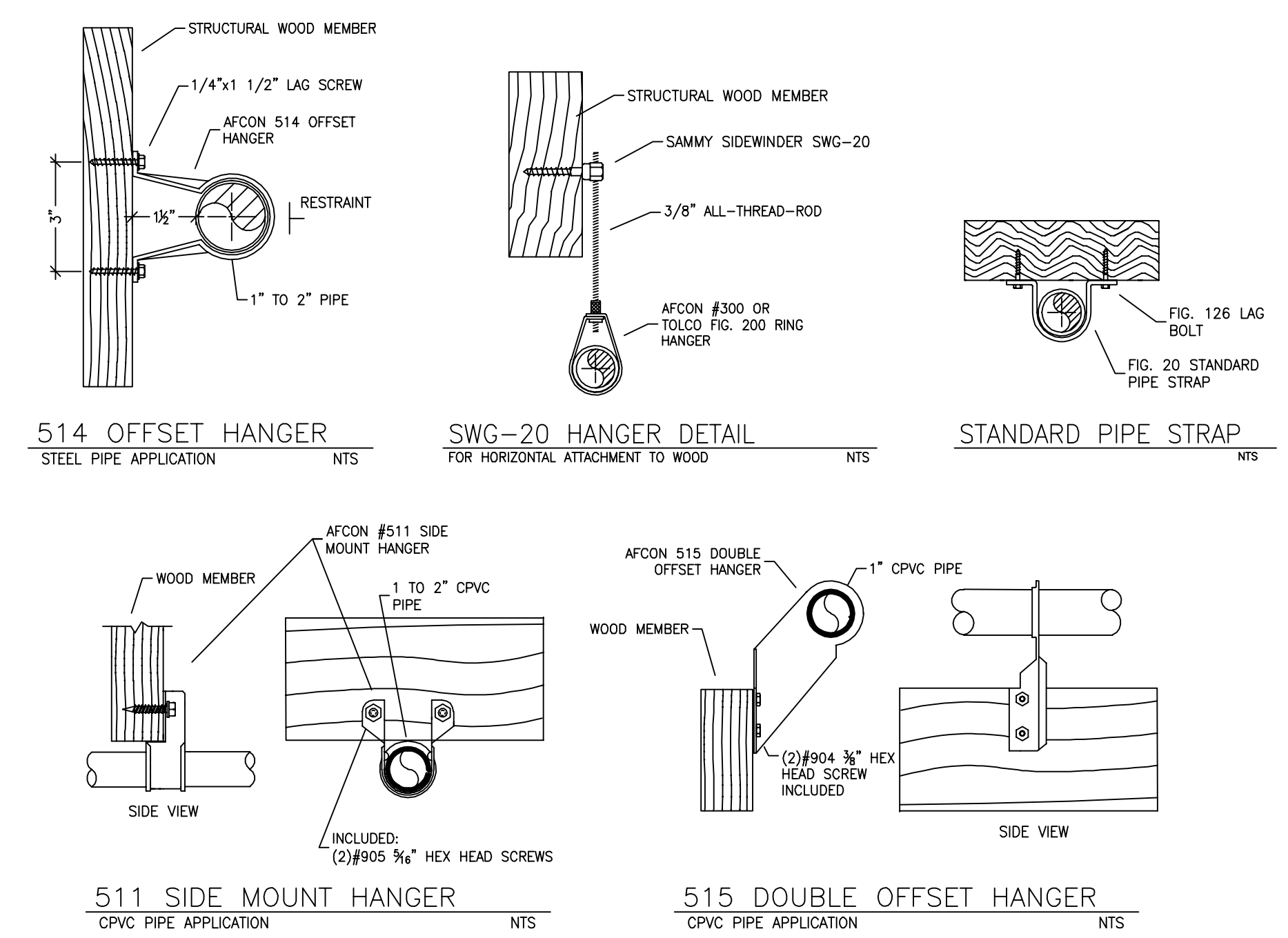


GARAGE FLOOR FIRE SPRINKLER PLAN
SCALE: 1/8" = 1'-0"

MAIN FLOOR FIRE SPRINKLER PLAN
SCALE: 1/8" = 1'-0"



HANGER DETAILS

NO.	DATE	REVISIONS	DRAWN	CHECKED

GENERAL CONTRACTOR: N TAHOE FIRE DISTRICT
 ADDRESS: 222 FAIRWAY DR
 CITY: TAHOE CITY, CA
 PHONE: 530-583-6911
 CONTACT: CONTACT:

ARCHITECT: FIELD INSPECTIONS:
 ADDRESS: 2.
 CITY: 3.
 PHONE: 4.

FIRE SPRINKLER NOTES:

- THE PROPOSED FIRE SPRINKLER SYSTEM IS AN ANTI-FREEZE SYSTEM AND SHALL BE DESIGNED AND INSTALLED IN ACCORDANCE WITH NFPA 13D.
- THIS SPRINKLER SYSTEM IS HYDRAULICALLY CALCULATED IN ACCORDANCE WITH NFPA 13D TO PROVIDE 0.05 GPM PER SQ. FT. OVER THE MOST REMOTE AREA.
- THE NUMBER OF DESIGN SPRINKLERS SHALL INCLUDE ALL SPRINKLERS WITHIN A COMPARTMENT UP TO A MAXIMUM OF 2 SPRINKLERS.
- ALL SPRINKLER PIPING CONCEALED ABOVE CEILING SHALL BE CPVC PIPING UNLESS OTHERWISE NOTED.
- ALL DIMENSIONS SHOWN ARE CENTER TO CENTER U.O.N.
- ALL HANGERS SHALL BE INSTALLED IN ACCORDANCE WITH NFPA 13D AND/OR NFPA 13 REQUIREMENTS.
- HOLES THROUGH SOLID STRUCTURAL MEMBERS SHALL BE PERMITTED TO SERVE AS HANGERS FOR THE SUPPORT OF SYSTEM PIPING.
- ALL SYSTEM PIPING SHALL BE TESTED FOR LEAKAGE AT NORMAL SYSTEM OPERATING PRESSURE.
- THE OWNER SHALL BE RESPONSIBLE FOR MAINTAINING A MINIMUM TEMPERATURE OF 40° FAHRENHEIT TO PROTECT FROM FREEZING. THE SECTIONS OF THE SPRINKLER SYSTEM WHERE THERE IS NO ANTI-FREEZE IN THE PIPING (UPSTREAM OF THE RISER).

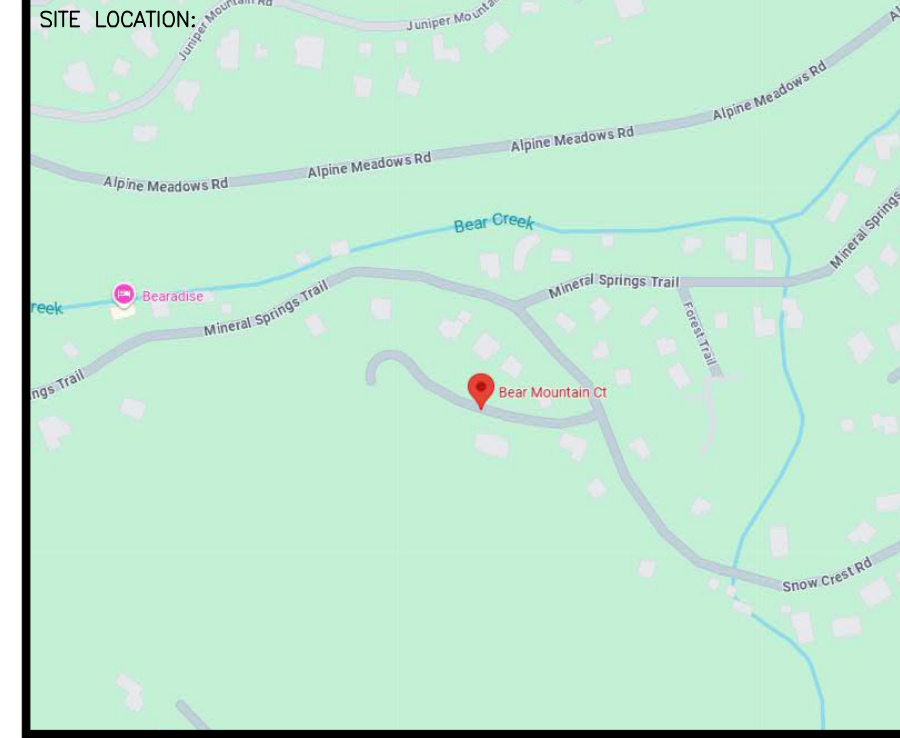
SPRINKLER HEAD LEGEND

SYM	QTY	TYPE	MFG.	MODEL#	NPT	K	TEMP	FINISH	S.I.N.
⊗	11	CONCEALED	SEN/J	RC-RES	1/2"	4.9	162	WHITE	SS8464
⊗	2	CONCEALED	SEN/J	RC-RES	1/2"	4.9	205	WHITE	SS8464
⊗	5	SEM-RECESS	SEN/J	FR-RES	1/2"	4.9	205	WHITE	SS4491

18 TOTAL SPRINKLERS ON THIS SHEET

FIRE SPRINKLER SYMBOLS

⊗	AUTOMATIC SPRINKLER RISER	+13' ELEV. BELOW DECK OR TOS
⊕	EARTHQUAKE BRACING	+12'-9" ELEV. ABOVE FINISHED FLOOR
+	2-WAY & 4-WAY	CHANGE ELEVATION UP
⊖	PIPE HANGER & TYPE DESIGNATION	CHANGE ELEVATION DN
⊗	HYDRAULIC REF PT	INSPECTORS TEST
⊕	GRID OR THRD CAP	AUX DRAIN
⊕	GRID COUPLING	REVISION NOTATION
⊕	TYPICAL POINT OF CONNECTION (POC)	LOCAL ALARM



PROJECT NAME: FIRE SPRINKLER PLANS FOR
BEAR MOUNTAIN CT
 BEAR MOUNTAIN COURT
 ALPINE MEADOWS, CA

STAMP:
 BEAR MOUNTAIN CT
 FFE # -6485

DRAWING TITLE: **FIRE SPRINKLER PLAN**

SCALE: 1/8" = 1'-0" JOB NO.: 25-5046
 DRAWN BY: DWG NO.:

BORN ON DATE: 5/13/2026 **FP-1**
 FILE: SHEET 1 OF 1

SUBMITTAL

NO SPRINKLERS REQUIRED IN:
 BATHROOMS 50 SQ.FT. OR LESS IN AREA PER NFPA 13D SECTION 8.6.2
 CLOSETS 24 SQ.FT. OR LESS IN AREA PER NFPA 13D SECTION 8.6.3

PROJECT SQUARE FOOTAGES
 GARAGE FLOOR = 881 S.F.
 MAIN FLOOR = 1540 S.F.

SPRINKLER HEAT ZONES:

HEAT SOURCE:	ORDINARY TEMP SPRINKLER	INTERMEDIATE TEMP SPRINKLER
SIDE OF OPEN OR RECESSED FIRE PLACE	36"	12"
FRONT OF RECESSED FIRE PLACE	60"	36"
COAL OR WOOD BURNING STOVE	42"	12"
RANGE/OVEN, HOT AIR FLUES & UNINSULATED HEAT DUCT	18"	9"
UNINSULATED HOT WATER PIPES & 250-499 WATT LIGHTS	12"	6"
SIDE OF CEILING OR WALL MOUNTED HOT AIR DIFFUSERS	24"	12"
FRONT OF WALL MOUNTED HOT AIR DIFFUSERS	36"	18"
HOT WATER HEATER, FURNACE, LIGHT FIXTURE 0-250 WATT	6"	3"

SPRINKLER SPACING

- A SINGLE PENDENT SPRINKLER MAY BE SPACED AT A MAXIMUM OF 18"x18" (324 SQ. FT.) OR UP TO 9' OFF A WALL (MINIMUM 8'-0" BETWEEN SPRINKLERS).
- TWO OR MORE HEADS IN A COMPARTMENT SHALL BE SPACED AT A MAXIMUM OF 16"x16" (256 SQ. FT.) OR UP TO 8' OFF A WALL UNO. (MINIMUM 8'-0" BETWEEN SPRINKLERS).
- SPRINKLERS SHALL BE MEASURED AT PERPENDICULAR ANGLES TO WALLS AND ALONG THE SLOPES OF CEILING.

THIS FIRE SPRINKLER SYSTEM UTILIZES THE NOBLE COMPANY FIREFIGHTER ELIMINATOR ANTI-FREEZE SOLUTION

NFPA 13 - Table 9.2.2.1(a) Maximum Distance Between Hangers (ft.-in.)

Nominal Pipe Size (in.)	Nominal Pipe Size (in.)								
	3/4	1	1 1/4	1 1/2	2	2 1/2	3	4	
Steel Pipe except threaded	N/A	12-0	12-0	15-0	15-0	15-0	15-0	15-0	15-0
Threaded lightwall steel pipe	N/A	12-0	12-0	15-0	15-0	15-0	15-0	N/A	N/A
Copper tube	8-0	8-0	10-0	10-0	12-0	12-0	12-0	15-0	15-0
CPVC	5-6	6-0	6-6	7-0	8-0	9-0	10-0	N/A	N/A

REMOTE AREA 1
Hydraulically Calculated System

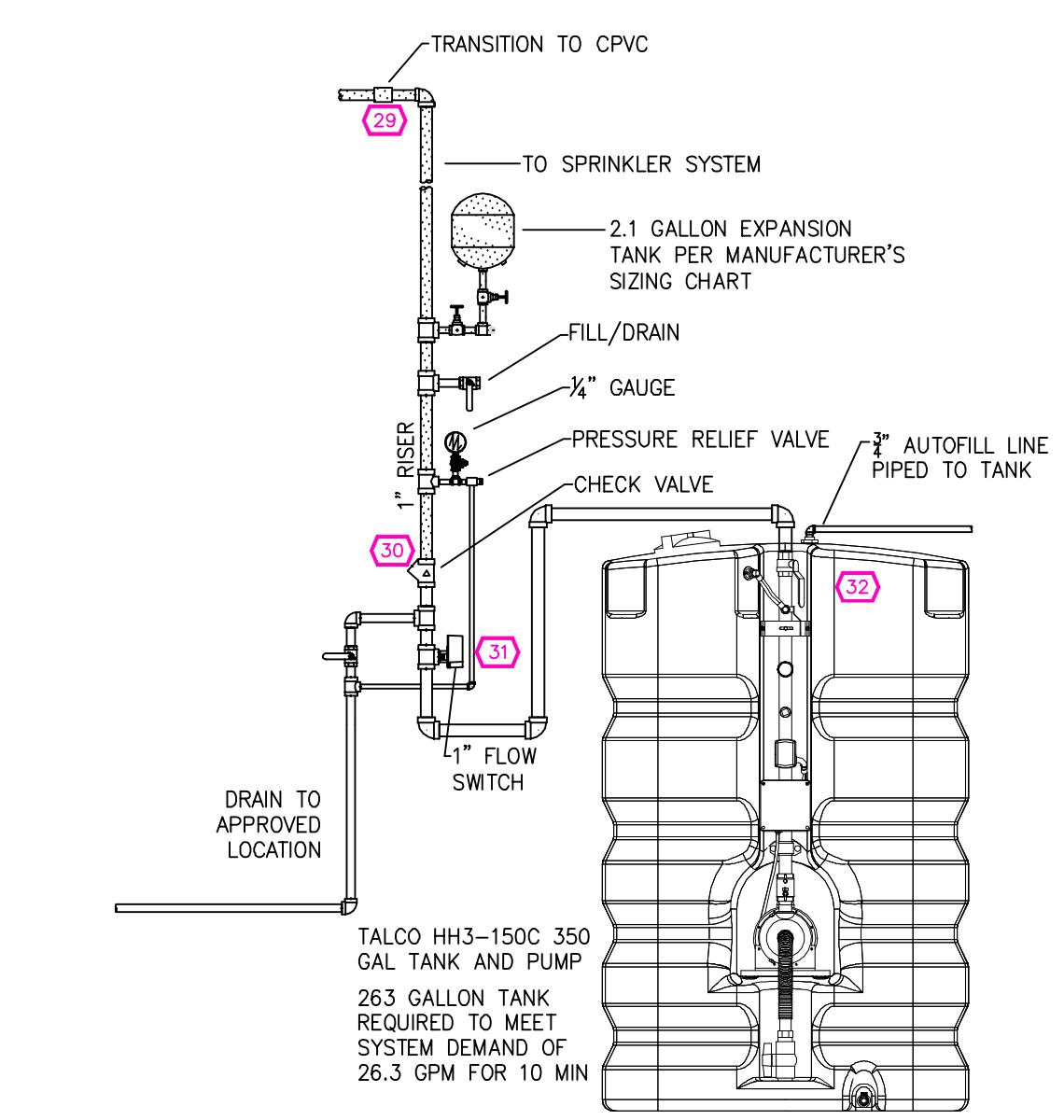
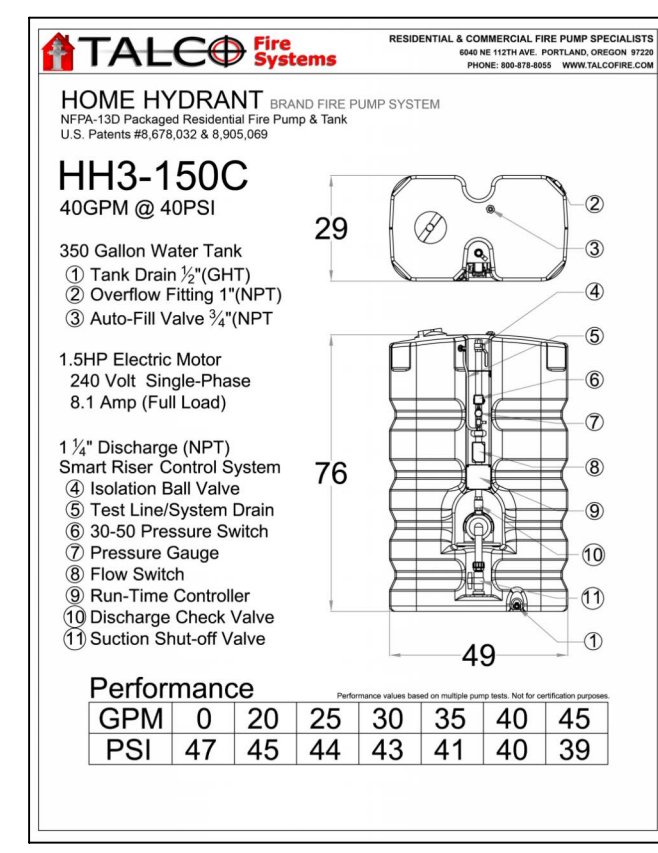
This system as shown on Fire Protection Plan company print no. FPP1 dated 4/30/2026 for BEAR MOUNTAIN COURT RESIDENCE at DINING/LIVING contract no. [] is designed to discharge at a rate of 0.05 gpm (L/min) per sq ft (m²) of floor area over a maximum area of 177.0 sq ft (m²) when supplied with water at the rate of 26.3 gpm (L/min) at 34.2 psi (bars) at the base of the riser. Hose stream allowance of 0 gpm (L/min) is included in the above. Occupancy classification: 130 LIGHT HAZARD. Commodity classification: N/A. Maximum storage height: N/A. Safety factor: 8.3.

REMOTE AREA 2
Hydraulically Calculated System

This system as shown on Fire Protection Plan company print no. FPP1 dated 4/30/2026 for BEAR MOUNTAIN COURT RESIDENCE at BEDROOM 3 contract no. [] is designed to discharge at a rate of 0.05 gpm (L/min) per sq ft (m²) of floor area over a maximum area of 177.0 sq ft (m²) when supplied with water at the rate of 17.0 gpm (L/min) at 31.2 psi (bars) at the base of the riser. Hose stream allowance of 0 gpm (L/min) is included in the above. Occupancy classification: 130 LIGHT HAZARD. Commodity classification: N/A. Maximum storage height: N/A. Safety factor: 14.3.

PROJECT SUMMARY:

PROJECT NAME: BEAR MOUNTAIN COURT RESIDENCE
 PROJECT ADDRESS: BEAR MOUNTAIN CT, ALPINE MEADOWS, CA
 APN: N/A
 PROJECT TYPE: NEW T.J.
 TYPE OF CONSTRUCTION: V
 OCCUPANCY GROUP(S): R3
 OCCUPIED LEVELS: 2
 TOTAL SPRINKLERED AREA: 2421 SQ. FT.
 NFPA CODE REQUIREMENT: NFPA 13 NFPA 13R NFPA 13D
 NUMBER OF SYSTEMS: 1
 SYSTEM TYPE(S): WET ANTI-FREEZE DRY PREACTION
 TOTAL SPRINKLERS: 18
 SPECIAL NOTES: SEE FIRE SPRINKLER NOTES THIS SHEET



1 RISER DETAIL
SCALE: 1/2" = 1'-0"

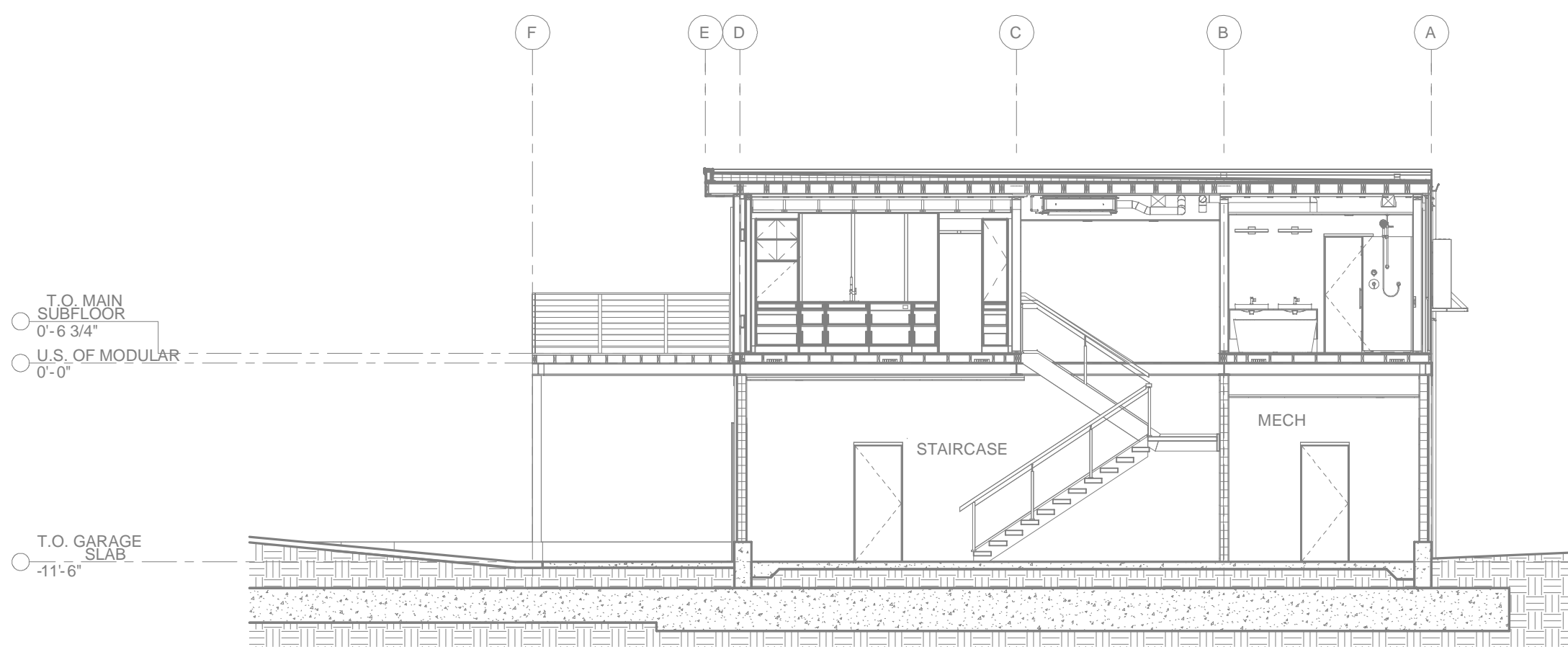
PIPE VOLUMES:
 (CPVC)

TOTAL PIPE FOOTAGE AND CAPACITY:
 1" = 177' (8.75 GAL)

ADD 10% FOR DROPS AND PIPE SIZE DISCREPANCIES
 TOTAL VOLUME: ± 9.63 GALLONS

NFPA 13 - Table A.7.2.3 Capacity of 1 ft of pipe (Based on Actual Internal Pipe Diameter)

Nominal Pipe Diameter (in.)	Schedule 40 Schedule 10	CPVC
1	0.045	0.049
1 1/4	0.078	0.085
1 1/2	0.106	0.115
2	0.174	0.190
2 1/2	0.248	0.283



A BUILDING SECTION
SCALE: 1/8" = 1'-0"

SITE PLAN
SCALE: 1" = 25'-0"