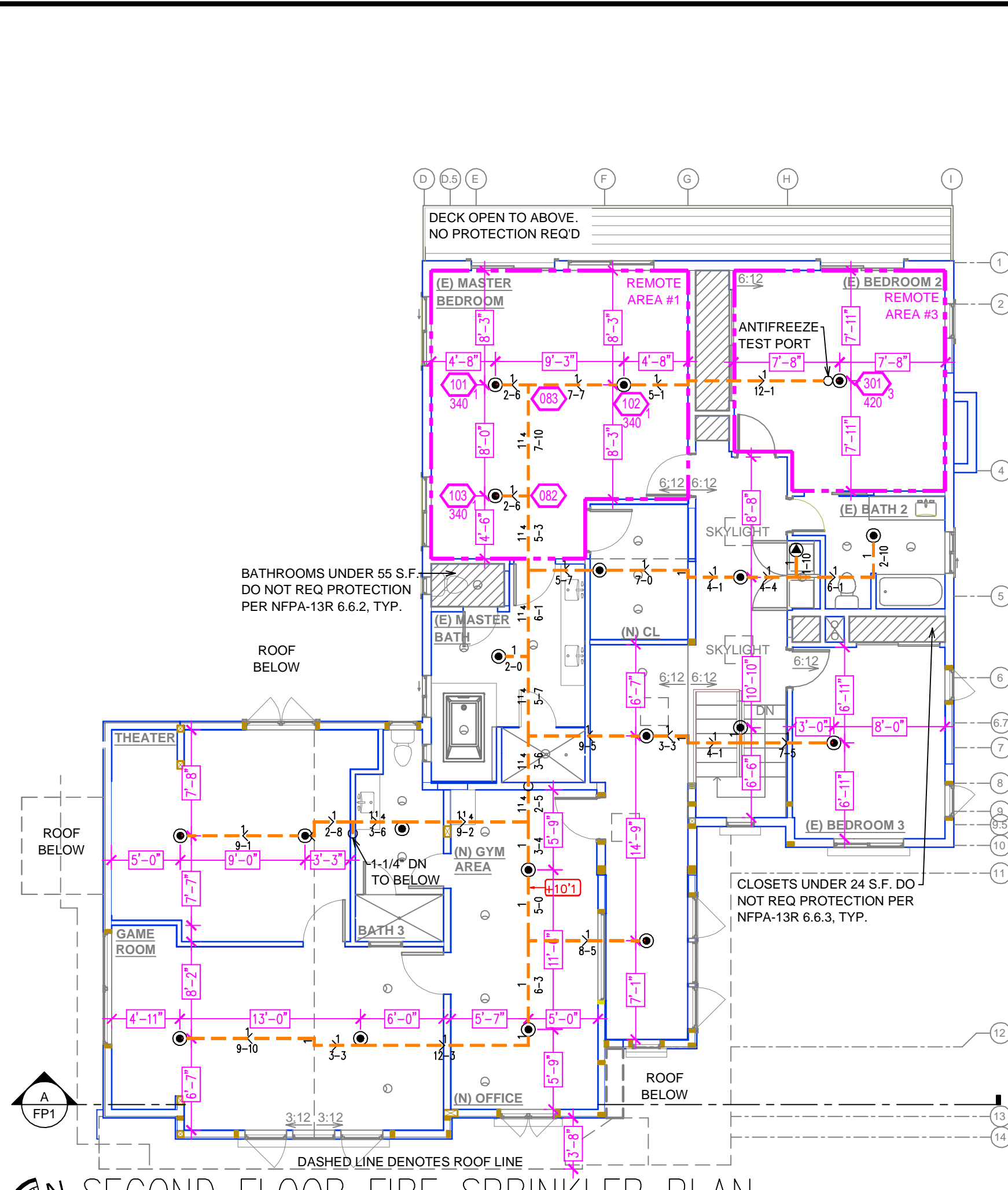
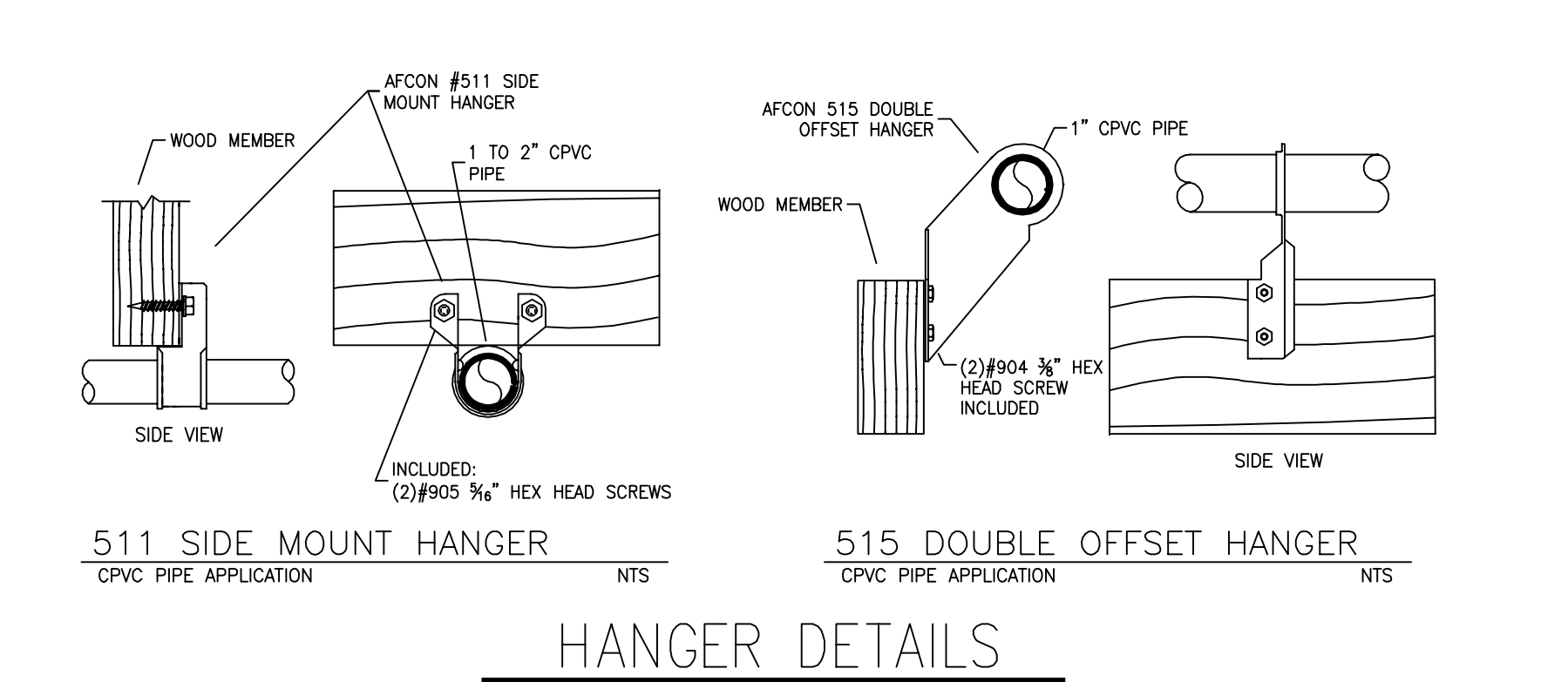
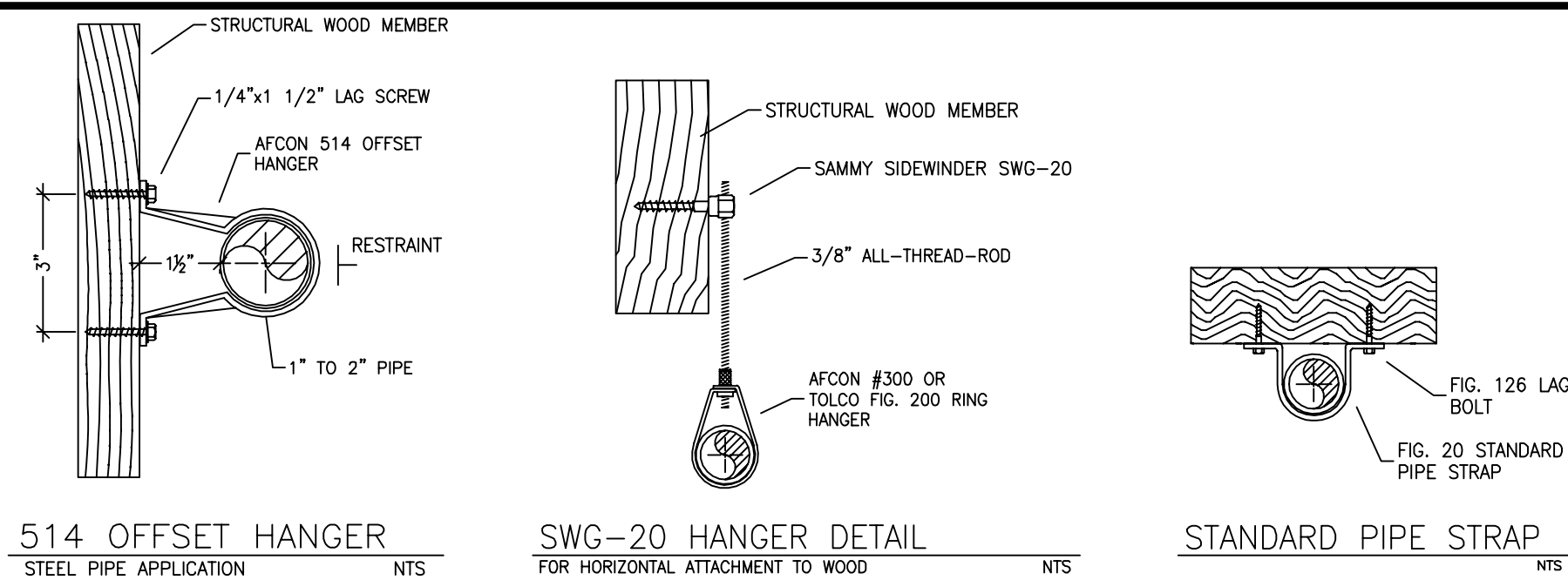


FIRST FLOOR FIRE SPRINKLER PLAN  
SCALE: 1/8" = 1'-0"



SECOND FLOOR FIRE SPRINKLER PLAN  
SCALE: 1/8" = 1'-0"



SUBMITTAL

SPRINKLER SPACING

- A SINGLE PENDENT SPRINKLER IN A COMPARTMENT MAY BE SPACED AT A MAXIMUM OF 20'x20' (400 SQ. FT.) OR UP TO 10' OFF A WALL.
- FOUR OR MORE HEADS IN A COMPARTMENT SHALL BE SPACED AT A MAXIMUM OF 18'x18' (324 SQ. FT.) OR UP TO 9' OFF A WALL U.N.O. (MINIMUM 8'-0" BETWEEN SPRINKLERS)
- SPRINKLERS SHALL BE MEASURED AT PERPENDICULAR ANGLES TO WALLS AND ALONG THE SLOPES OF CEILINGS.

THIS FIRE SPRINKLER SYSTEM UTILIZES THE NOBLE COMPANY FIREFIGHTER ELIMINATOR ANTI-FREEZE SOLUTION

REMOTE AREA 1	REMOTE AREA 2	REMOTE AREA 3
<b>Hydraulically Calculated System</b> This system as shown on Fire Protection Plan company print no. FP1 dated 10/15/2025 for GEDDES RESIDENCE at MASTER BEDROOM contract no. is designed to discharge at a rate of 0.05 gpm (L/min) per sq ft (m²) of floor area over a maximum area of NFPA 13R - 3 SPRINKLERS sq ft (m) when supplied with water at the rate of 79.2 gpm (L/min) at 63.8 psi (bars) at the base of the riser. Hose stream allowance of 25 gpm (L/min) is included in the above. Occupancy classification NFPA 13R - LIGHT Commodity classification N/A Maximum storage height N/A Safety factor 11.1	<b>Hydraulically Calculated System</b> This system as shown on Fire Protection Plan company print no. FP1 dated 10/15/2025 for GEDDES RESIDENCE at KITCHEN/DINING contract no. is designed to discharge at a rate of 0.05 gpm (L/min) per sq ft (m²) of floor area over a maximum area of NFPA 13R - 4 SPRINKLERS sq ft (m) when supplied with water at the rate of 98.9 gpm (L/min) at 63.4 psi (bars) at the base of the riser. Hose stream allowance of 25 gpm (L/min) is included in the above. Occupancy classification NFPA 13R - LIGHT Commodity classification N/A Maximum storage height N/A Safety factor 11.6	<b>Hydraulically Calculated System</b> This system as shown on Fire Protection Plan company print no. FP1 dated 10/15/2025 for GEDDES RESIDENCE at BEDROOM 2 contract no. is designed to discharge at a rate of 0.05 gpm (L/min) per sq ft (m²) of floor area over a maximum area of NFPA 13R - 1 SPRINKLER sq ft (m) when supplied with water at the rate of 46.0 gpm (L/min) at 51.7 psi (bars) at the base of the riser. Hose stream allowance of 25 gpm (L/min) is included in the above. Occupancy classification NFPA 13R - LIGHT Commodity classification N/A Maximum storage height N/A Safety factor 23.3

25 GPM DOMESTIC DEMAND INCLUDED IN CALCULATIONS

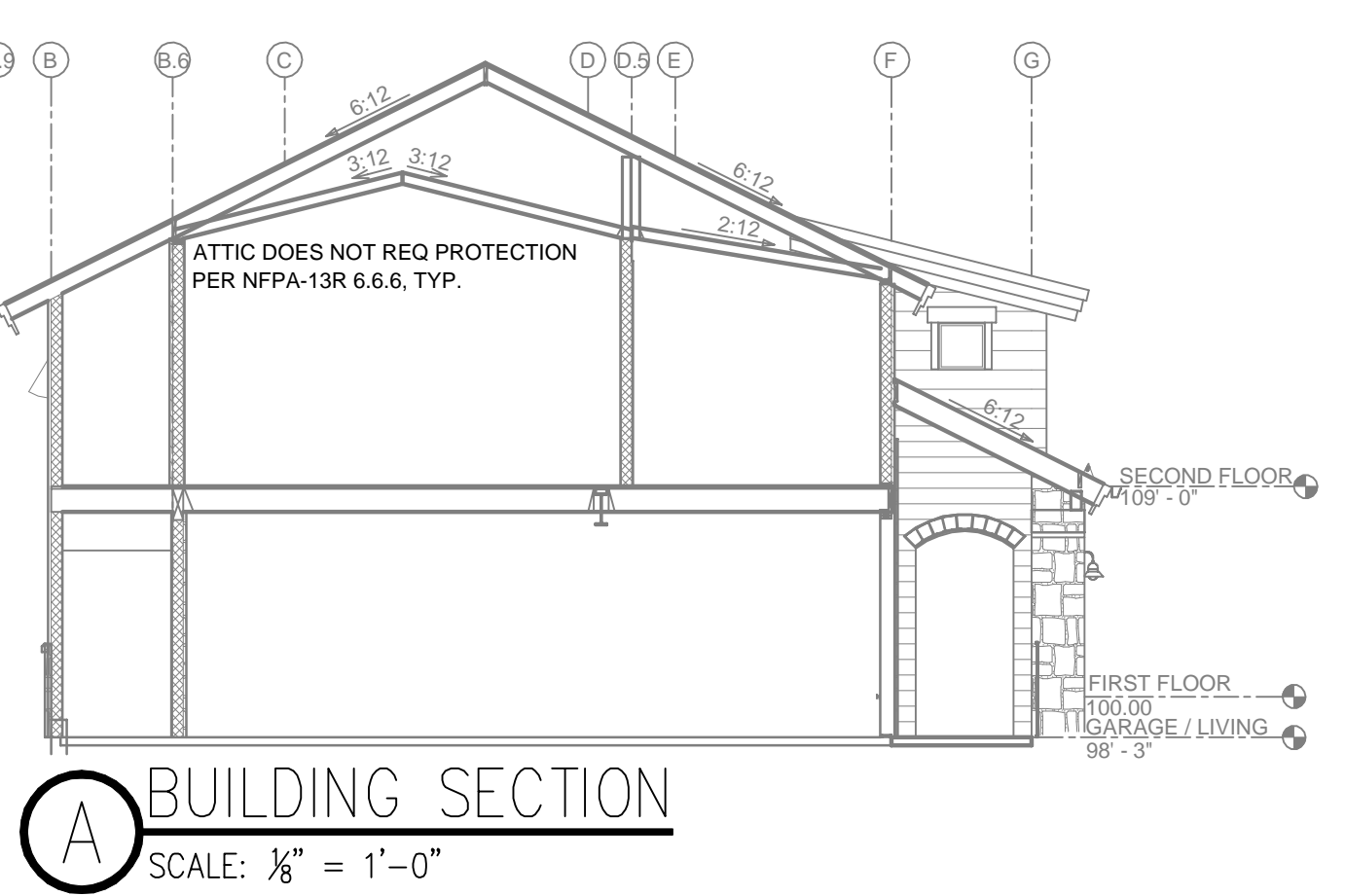
PIPE VOLUMES: (CPVC)			
TOTAL PIPE FOOTAGE AND CAPACITY: 1" CPVC = 518' (25.62 GAL) 1" STEEL = 13' (0.58 GAL)			
ADD 10% FOR DROPS AND PIPE SIZE DISCREPANCIES TOTAL VOLUME: ±28.82 GALLONS			
NFPA 13 - Table A.7.2.3 Capacity of 1 ft of pipe (Based on Actual Internal Pipe Diameter)			
Nominal Pipe Diameter (in.)	Schedule 40 (gal)	Schedule 10 (gal)	CPVC (gal)
1	0.045	0.049	0.049
1 1/4	0.078	0.085	0.079
1 1/2	0.106	0.115	0.104
2	0.174	0.190	
2 1/2	0.248	0.283	

NO SPRINKLERS REQUIRED IN:  
BATHROOMS 55 SQ. FT. OR LESS IN AREA PER NFPA 13R SECTION 6.6.2  
CLOSETS 24 SQ. FT. OR LESS IN AREA PER NFPA 13R SECTION 6.6.3

PROJECT SQUARE FOOTAGES  
1ST FLOOR = 3277 SF  
2ND FLOOR = 2487 SF

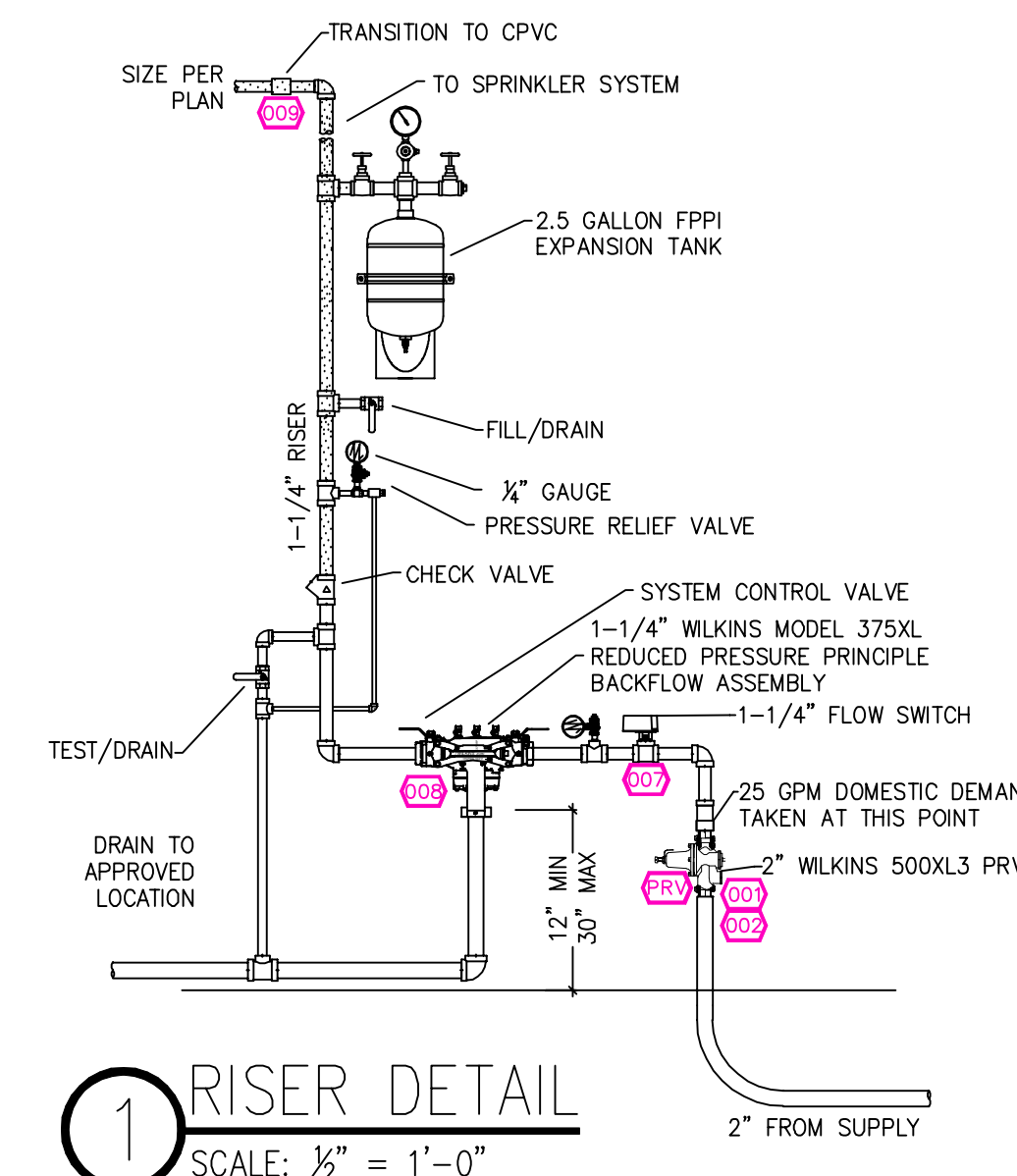
PIPE LEGEND  
--- CPVC PIPING  
--- BLACK STEEL PIPING

SPRINKLER HEAT ZONES:			
HEAT SOURCE:	ORDINARY TEMP SPRINKLER	INTERMEDIATE TEMP SPRINKLER	
SIDE OF OPEN OR RECESSED FIRE PLACE	36"	12"	
FRONT OF RECESSED FIRE PLACE	60"	36"	
COAL OR WOOD BURNING STOVE	42"	12"	
RANGE/OVEN, HOT AIR FLUES & UNINSULATED HEAT DUCT	18"	9"	
UNINSULATED HOT WATER PIPES & 250-499 WATT LIGHTS	12"	6"	
SIDE OF CEILING OR WALL MOUNTED HOT AIR DIFFUSERS	24"	12"	
FRONT OF WALL MOUNTED HOT AIR DIFFUSERS	36"	18"	
HOT WATER HEATER, FURNACE, LIGHT FIXTURE 0-250 WATT	6"	3"	

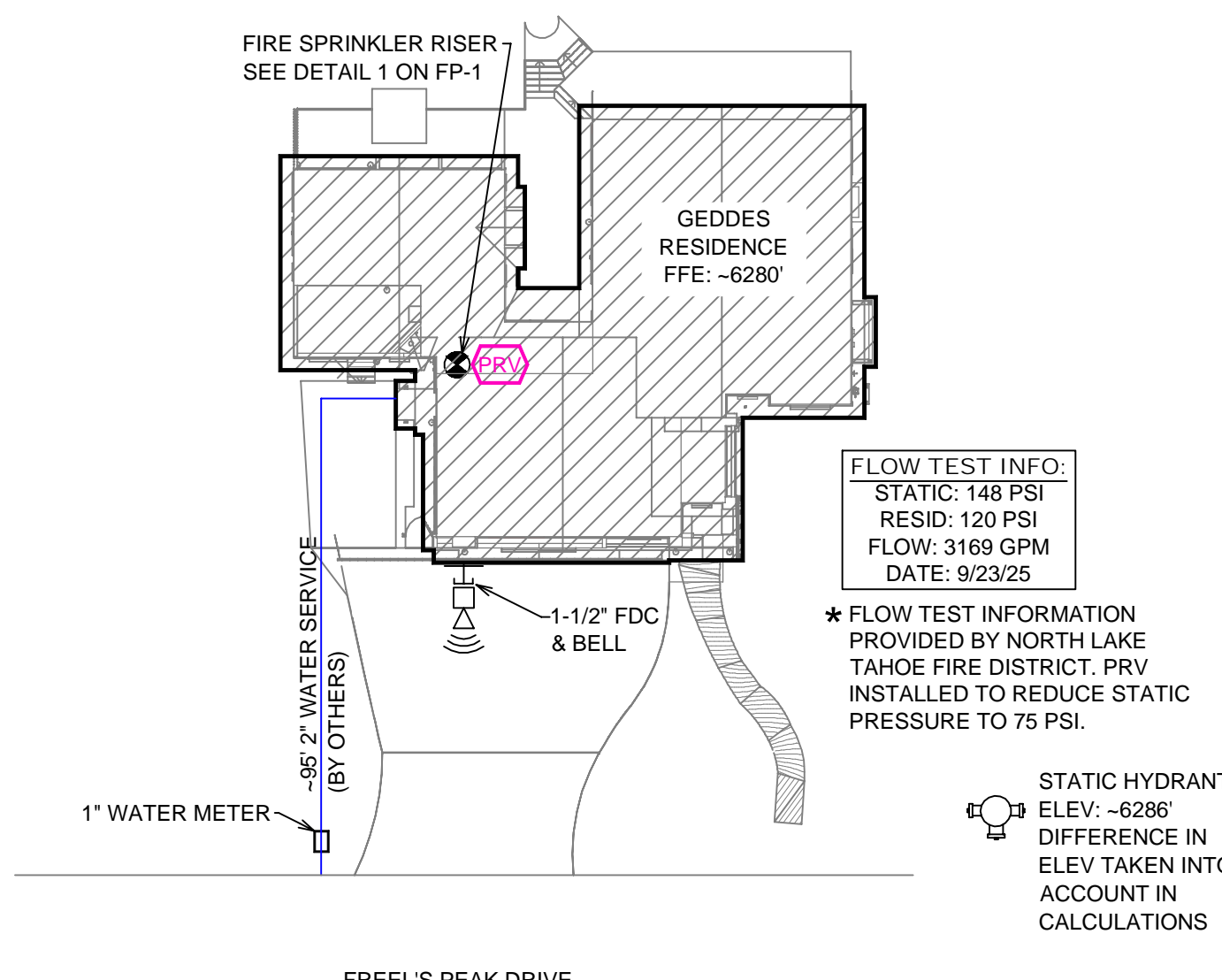


BUILDING SECTION  
SCALE: 1/8" = 1'-0"

PROJECT SUMMARY:  
PROJECT NAME: GEDDES RESIDENCE  
PROJECT ADDRESS: 875 FREELS PEAK DR, INCLINE VILLAGE, NV 122-214-04  
APN: \_\_\_\_\_  
PROJECT TYPE: ☐ NEW ☒ T.I.  
TYPE OF CONSTRUCTION: V  
OCCUPANCY GROUP(S): R3  
OCCUPIED LEVELS: 2  
TOTAL SPRINKLERED AREA: 5764 SQ. FT.  
NFPA CODE REQUIREMENT: ☐ NFPA 13 ☒ NFPA 13R ☐ NFPA 13D  
NUMBER OF SYSTEMS: 1  
SYSTEM TYPE(S): ☐ WET ☒ ANTI-FREEZE ☐ DRY ☐ PREACTION  
TOTAL SPRINKLERS: 47  
SPECIAL NOTES: SEE FIRE SPRINKLER NOTES THIS SHEET



1 RISER DETAIL  
SCALE: 1/2" = 1'-0"



SITE PLAN  
SCALE: 1" = 25'-0"

NO. DATE		REVISIONS		DRAWN CHECKED	
GENERAL CONTRACTOR: AUTHORITY HAVING JURISDICTION: NORTH LAKE TAHOE FIRE PROTECTION DISTRICT ADDRESS: 866 ORIOLE WAY CITY: INCLINE VILLAGE, NV PHONE: 775-831-0351 CONTACT: CONTACT:					
ARCHITECT:		FIELD INSPECTIONS: 1. 2. 3. 4.			
ADDRESS:		2.			
CITY:		3.			
PHONE:		4.			
FIRE SPRINKLER NOTES: 1. THE PROPOSED FIRE SPRINKLER SYSTEM IS AN ANTI-FREEZE SYSTEM AND SHALL BE DESIGNED AND INSTALLED IN ACCORDANCE WITH NFPA 13R 2022 WITH MODIFICATIONS MANDATED BY THE AHJ AS FOLLOWS: • SPRINKLER PROTECTION FOR BALCONIES, DECKS, PATIOS & OTHER OVERHANGS OVER 4'-0". • 4 HEAD CALCULATION. • ANTI-FREEZE TESTPORT 2. THIS SPRINKLER SYSTEM IS HYDRAULICALLY CALCULATED IN ACCORDANCE WITH NFPA 13R TO PROVIDE 0.05 GPM PER SQ. FT. OVER THE MOST REMOTE AREA. 3. THE NUMBER OF DESIGN SPRINKLERS SHALL INCLUDE ALL SPRINKLERS WITHIN A COMPARTMENT UP TO A MAXIMUM OF 4 SPRINKLERS. 4. ALL SPRINKLER PIPING CONCEALED ABOVE CEILINGS SHALL BE CPVC PIPING UNLESS OTHERWISE NOTED. 5. ALL DIMENSIONS SHOWN ARE CENTER TO CENTER U.O.N. 6. ALL HANGERS SHALL BE INSTALLED IN ACCORDANCE WITH NFPA 13R AND/OR NFPA 13 REQUIREMENTS. 7. HOLES THROUGH SOLID STRUCTURAL MEMBERS SHALL BE PERMITTED TO SERVE AS HANGERS FOR THE SUPPORT OF SYSTEM PIPING. 8. ALL SYSTEM PIPING SHALL BE TESTED FOR LEAKAGE AT NORMAL SYSTEM OPERATING PRESSURE. 9. THE OWNER SHALL BE RESPONSIBLE FOR MAINTAINING A MINIMUM TEMPERATURE OF 40° FAHRENHEIT TO PROTECT FROM FREEZING. THE SECTIONS OF THE SPRINKLER SYSTEM WHERE THERE IS NO ANTI-FREEZE IN THE PIPING (UPSTREAM OF THE RISER).					
SPRINKLER HEAD LEGEND SYM QTY TYPE MFG. MODEL# NPT K TEMP FINISH S.I.N. 5 37 CONCEALED SENJ RC-RES 1/2" 4.9 162 WHITE S58464 5 SEM-RECESS SENJ RC-RES 1/2" 4.9 205 WHITE S54451 3 EXPOSED SENJ RC-RES 1/2" 4.9 205 BRASS S58464 2 CONCEALED SENJ RC-RES 1/2" 4.9 205 WHITE S58464					
47 TOTAL SPRINKLERS ON THIS SHEET					
FIRE SPRINKLER SYMBOLS AUTOMATIC SPRINKLER RISER +13" ELEV. BELOW DECK OR TOS EARTHQUAKE BRACING +12'-9" ELEV. ABOVE FINISHED FLOOR 2-WAY & 4-WAY PIPE HANGER & TYPE DESIGNATION HYDRAULIC REF PT GRID OR THIRD CAP GRID COUPLING TYPICAL POINT OF CONNECTION (POC) REVISION NOTATION LOCAL ALARM SITE LOCATION:					
PROJECT NAME: FIRE SPRINKLER PLANS FOR GEDDES RESIDENCE 875 FREELS PEAK DRIVE INCLINE VILLAGE, NV 89451					
STAMP:					
DRAWING TITLE: FIRE SPRINKLER PLAN					
SCALE: 1/8"=1'-0"		JOB NO.: 25-5045		DWN NO.:	
DRAWN BY:		BORN ON DATE: 11/4/2025		FP-1	
FILE:		SHEET 1 OF 1			