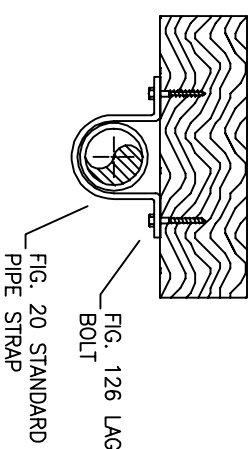
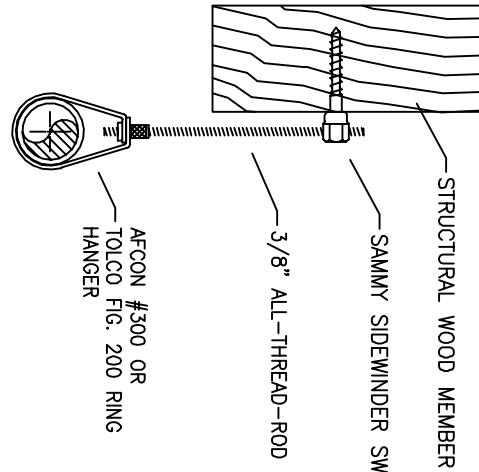
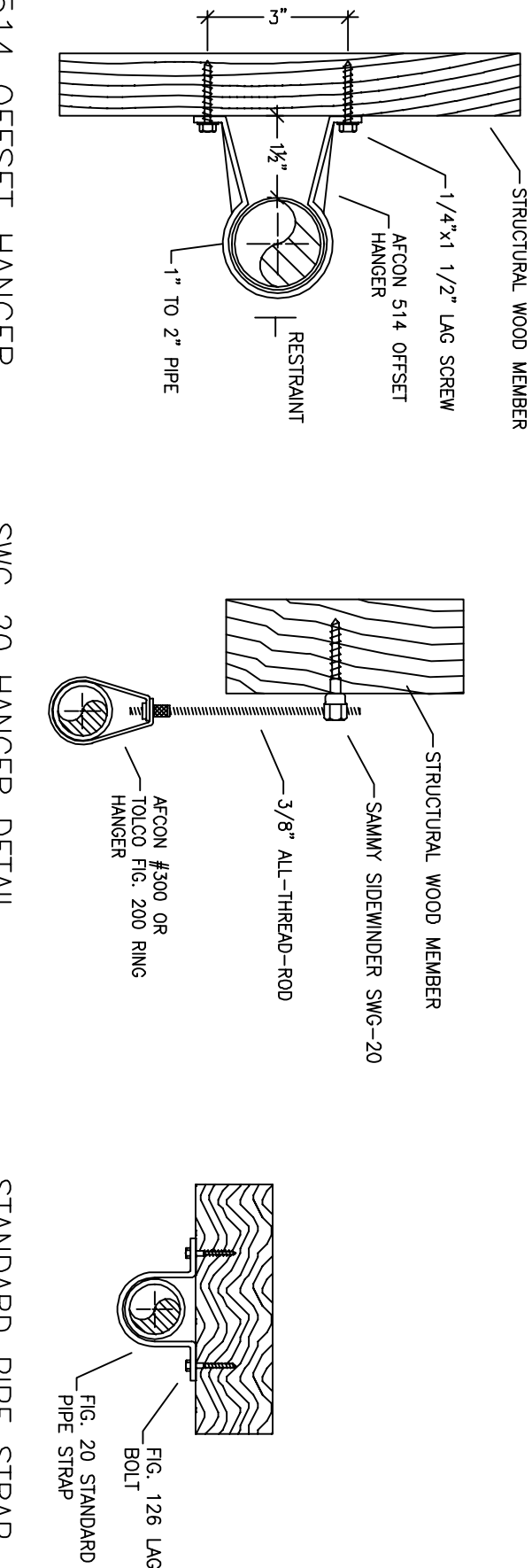


# PIPE LEGEND

CPVC PIPING

BLACK STEEL PIPING



## PROJECT SQUARE FOOTAGES

MAIN LEVEL = 727 SF

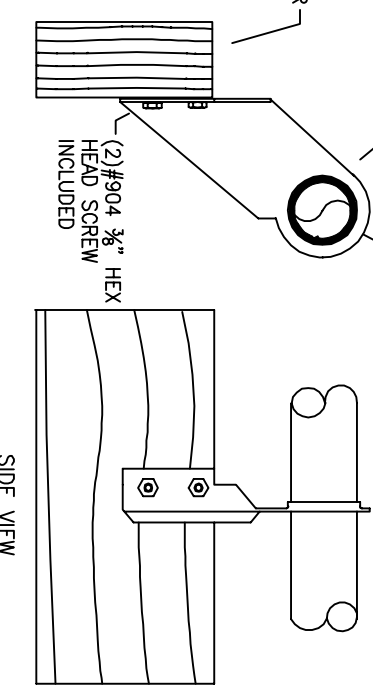
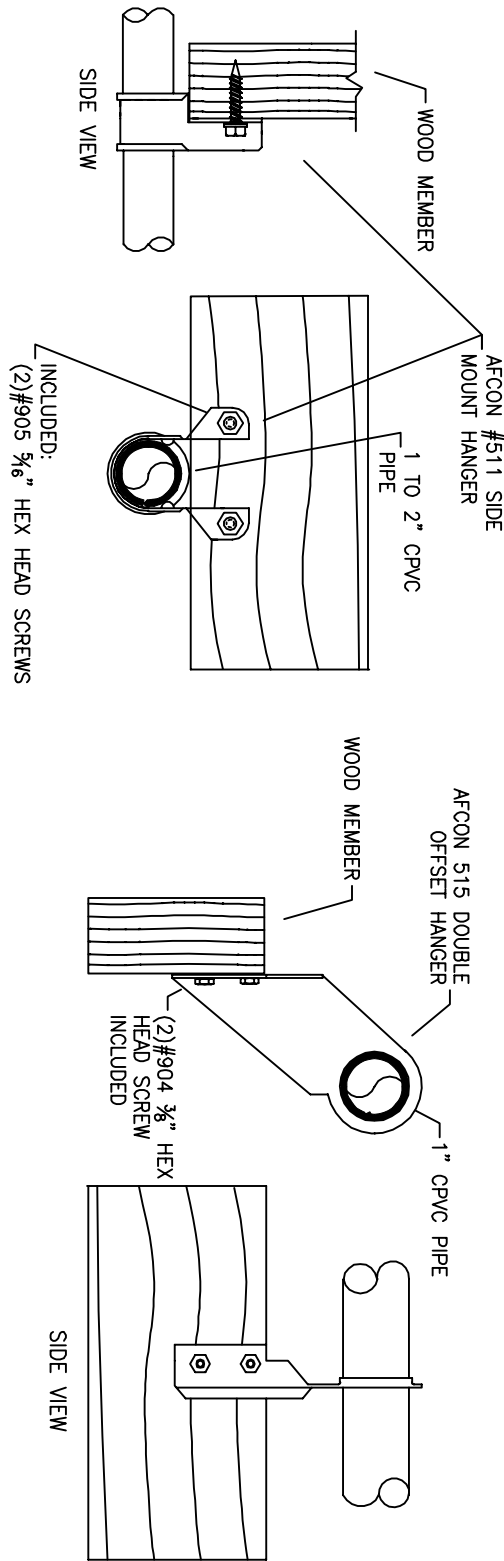
NO SPRINKLERS REQUIRED IN BATHROOMS UNDER 55 S.F. PER NFPA 13B SECTION 6.6.2.1. CLOSETS 24 SQ.FT. OR LESS IN AREA PER NFPA 13B SECTION 6.6.2.1.

NFPA 13 - Table 8.2.2.1(a) Maximum Distance Between Hangers (ft.)		Nominal Pipe Size (in.)							
		3/4"	1"	1 1/2"	2"	2 1/2"	3"	4"	6"
Steel Pipe except threaded	N/A	12-0	12-0	15-0	15-0	15-0	15-0	15-0	15-0
Threaded lightwall steel	N/A	12-0	12-0	15-0	15-0	15-0	15-0	15-0	15-0
Pipe		8-0	8-0	10-0	10-0	12-0	12-0	15-0	15-0
Copper tube		5-6	6-0	6-6	7-0	8-0	9-0	10-0	N/A
CPVC									N/A

### PROJECT SUMMARY:

PROJECT NAME: **GRAHAM RESIDENCE**  
 PROJECT ADDRESS: **718 MARTIS PEAK DR. INCLINE VILLAGE, NV**  
 APN: **122-197-14**  
 PROJECT TYPE: **NEW DTI**  
 TYPE OF CONSTRUCTION: **V**  
 OCCUPANCY GROUP(S): **R3**  
 TOTAL SPRINKLED AREA: **727** SQ. FT.  
 NFPA CODE REQUIREMENT: **1** ☒ NFPA 13 ☒ NFPA 13B ☐ NFPA 13D  
 SYSTEM TYPE(S): ☐ WET ☒ ANTI-FREEZE ☐ DRY ☐ PREACTION  
 TOTAL SPRINKLERS: **18**  
 SPECIAL NOTES: SEE FIRE SPRINKLER NOTES THIS SHEET

## HANGER DETAILS

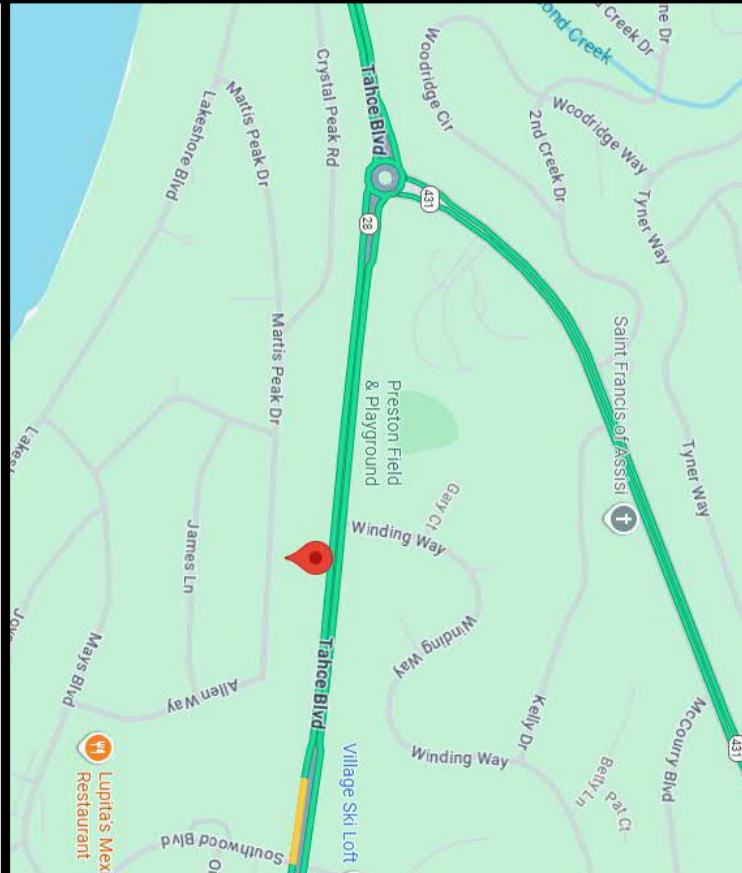


SPRINKLER HEAD LEGEND									
SNW	QTY	TYPE	WTS.	MODEL	WRT	K	TEMP	FINISH	S.I.
9	9	CONCEALED	SDN	RC-RES	1/2"	4.9	162	WHITE	SSR44
3	3	EXPOSED	SDN	RC-RES	1/2"	4.9	205	WHITE	SSR44
4	4	CONCEALED	SDN	RC-RES	1/2"	4.9	205	WHITE	SSR44

- THE PROPOSED FIRE SPRINKLER SYSTEM IS AN ANTI-FREEZE SYSTEM. 13B-2022 WITH MODIFICATIONS MANAGED BY THE AHJ AS FOLLOWS:
  - SPRINKLER PROTECTION FOR BALCONIES, DECKS, PATIOS & OTHER UNENCLOSED AREAS.
  - ANTIFREEZE TESTPORT
- THIS SPRINKLER SYSTEM IS HYDRAULICALLY CALCULATED IN THE MOST REMOTE AREA. 13B-107 TO PROVIDE 0.05 GPM/FT. SQ. FT. OVER THE MOST REMOTE AREA.
- THE NUMBER OF DESIGN SPRINKLERS SHALL INCLUDE ALL SPRINKLERS 4. ALL SPRINKLING PIPING CONCEALED ABOVE CEILINGS SHALL BE CPVC PIPING UNLESS OTHERWISE NOTED.
- ALL DIMENSIONS SHOWN ARE CENTER TO CENTER UNLESS OTHERWISE NOTED.
- AND/OR NFPA 13 REQUIREMENTS IN ACCORDANCE WITH NFPA 13B.
- TO VERIFY FRAMING STUDS FOR THE SLOPE OF SYSTEM PIPING. 8. ALL SYSTEM PIPING SHALL BE TESTED ON 10' SPACINGS AT 100 PSI.
- THE OWNER SHALL BE RESPONSIBLE FOR MAINTAINING A MINIMUM SECTION OF THE SPRINKLER SYSTEM WHERE THERE IS NO ANTI-FREEZE IN THE PIPING UPSTREAM OF THE RISER.

## 18 TOTAL SPRINKLERS ON THIS SHEET

- FIRE SPRINKLER SYMBOLS**
- ⊗ AUTOMATIC SPRINKLER RISER +12" ELEV. BELOW DECK OR TOS
  - ⊕ EARTHQUAKE BRACING
  - 2-WAY & 4-WAY
  - PIPE HANGER & CHANGE ELEVATION ON
  - TYPE DESIGNATION
  - 90° OR 180° CAP
  - ⊕ GROUND COUPLING
  - ⊕ TYPICAL POINT OF CONNECTION (POC)
  - ⊕ SITE LOCATION
  - ⊕ REVISION NOTION
  - ⊕ LOCAL ALARM



PROJECT NAME: FIRE SPRINKLER PLANS FOR

## GRAHAM RESIDENCE

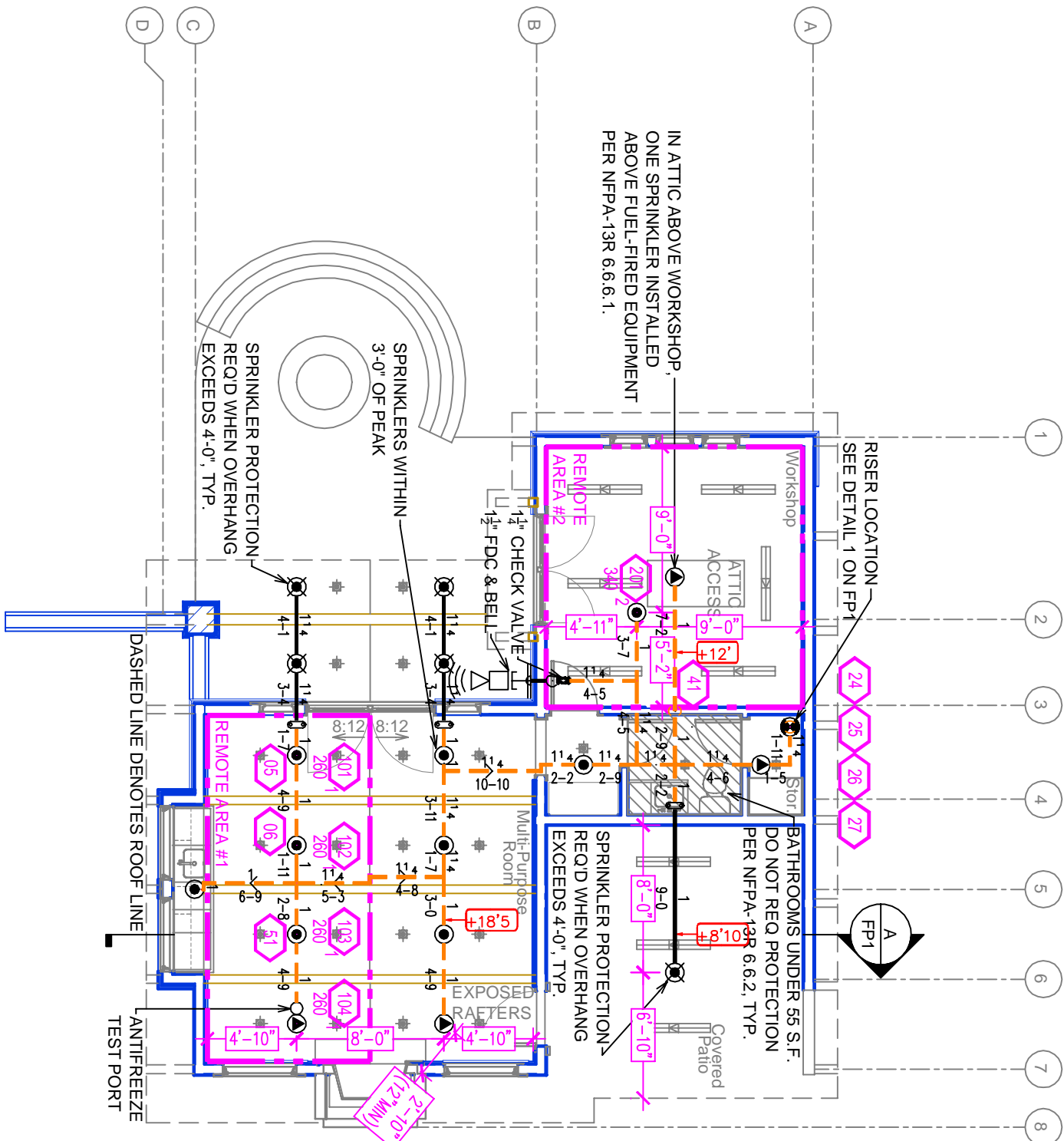
718 MARTIS PEAK DRIVE  
INCLINE VILLAGE, NV 89451

STAMP:

DRAWING TITLE:

## FIRE SPRINKLER PLAN

SCALE: 1/8" = 1'-0"	DOB NO.:
DRAWN BY: [Signature]	SWP NO.:
BORN ON DATE: 9/9/2023	FP-1
SHEET 1 OF 1	



## FIRST FLOOR FIRE SPRINKLER PLAN

SCALE: 1/8" = 1'-0"

## REMOTE AREA 1

## REMOTE AREA 2

### PIPE VOLUMES:

(CPVC)

TOTAL PIPE FOOTAGE AND CAPACITY:

1" CPVC = 58 (2.87 GAL)

1-1/4" CPVC = 57 (4.92 GAL)

1" STEEL = 20 (1.55 GAL)

ADD 10% FOR PROPS AND PIPE SIZE DISCREPANCIES

TOTAL VOLUME: ± 9.84 GALLONS

### Hydraulically Calculated System

The system as shown on [Form] Fire Protection Plan, company print no. [Form] detail [Form] 852025 for [Form] GRAHAM RESIDENCE at [Form] MULTIFAMILY RES. PROJECT contract no. [Form] is designed to discharge at a rate of [Form] 3.05 gpm (Unlisted rate (ft) of flow area over a minimum area of [Form] sq ft (ft) (when supplied with water at the rate of [Form] 32.4 gpm (L/min) at [Form] 33.3 psi (bars) at the base of the riser. Hose stream allowance of [Form] 0 gpm (L/min) is included in the above.

Occupancy classification: [Form] NFPA 13B - LIGHT

Minimum storage height: [Form] 15'

Minimum storage depth: [Form] 1.5'

Installed by: [Form]

### Hydraulically Calculated System

The system as shown on [Form] Fire Protection Plan, company print no. [Form] detail [Form] 852025 for [Form] GRAHAM RESIDENCE at [Form] MULTIFAMILY RES. PROJECT contract no. [Form] is designed to discharge at a rate of [Form] 3.05 gpm (Unlisted rate (ft) of flow area over a minimum area of [Form] sq ft (ft) (when supplied with water at the rate of [Form] 32.4 gpm (L/min) at [Form] 33.3 psi (bars) at the base of the riser. Hose stream allowance of [Form] 0 gpm (L/min) is included in the above.

Occupancy classification: [Form] NFPA 13B - LIGHT

Minimum storage height: [Form] 15'

Minimum storage depth: [Form] 1.5'

Installed by: [Form]

NFPA 13 - Table A.7.2.3 Capacity of 1 ft of pipe (Based on Actual Internal Pipe Diameter)

Nominal Pipe Diameter (in.)	Pipe Schedule 40 Schedule 10 CPVC
1	0.045 0.048 0.049
1 1/4	0.078 0.085 0.079
1 1/2	0.106 0.115 0.104
2	0.174 0.189 0.180
2 1/2	0.240 0.260 0.250

## SUBMITTAL

### SPRINKLER SPACING

- A SINGLE PENDENT SPRINKLER IN A COMPARTMENT MAY BE SPACED AT A MAXIMUM OF 18'x18' (324 SQ. FT.) OR UP TO 9' OFF A WALL.
- FOUR OR MORE HEADS IN A COMPARTMENT SHALL BE SPACED AT A MAXIMUM OF 18'x18' (286 SQ. FT.) OR UP TO 8' OFF A WALL.
- SPRINKLER SHALL BE SPACED AT 90 DEGREE ANGLES TO WALLS AND ALONG THE SPACES OF CEILINGS.

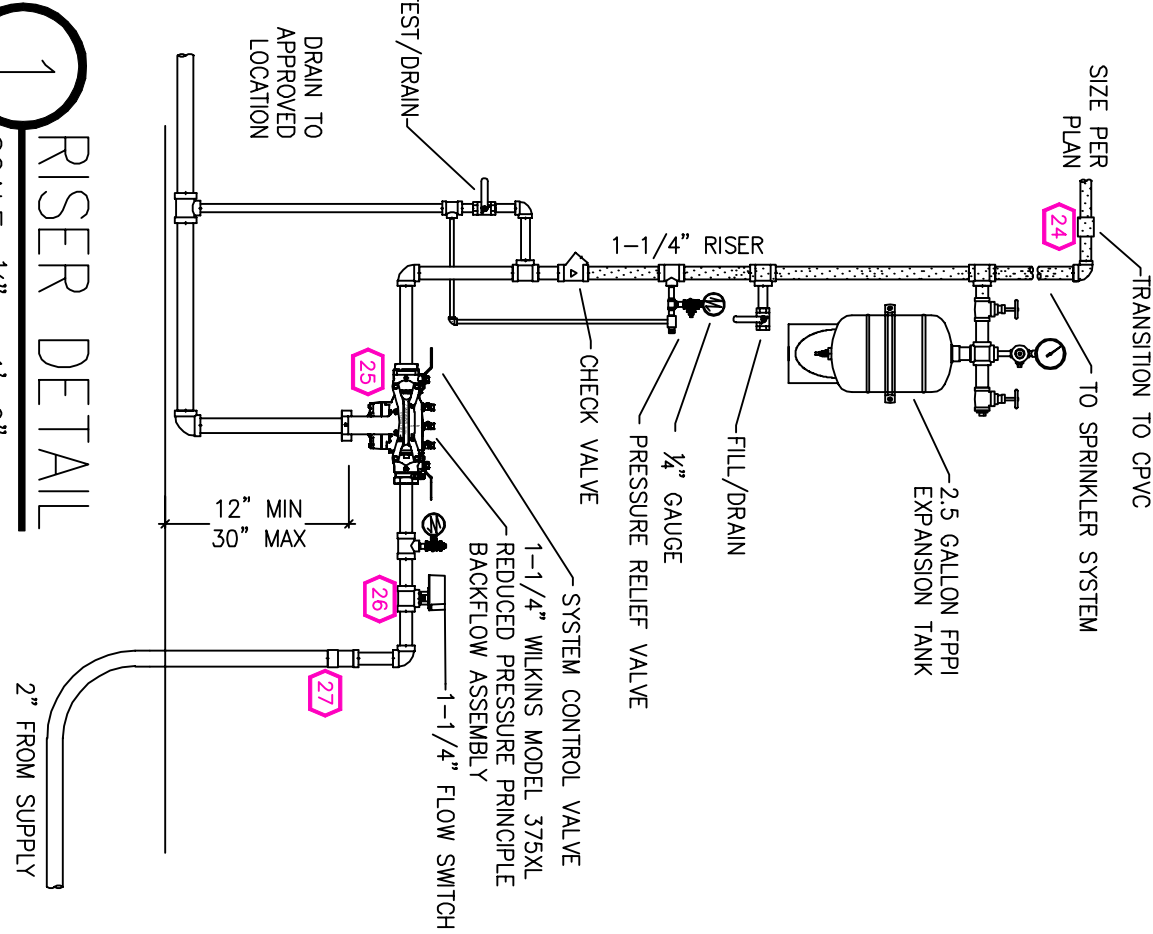
THIS FIRE SPRINKLER SYSTEM UTILIZES THE NOBLE COMPANY FIREFIGHTER ELIMINATOR ANTI-FREEZE SOLUTION

### SPRINKLER HEAT ZONES:

HEAT SOURCE:	ORDINARY TEMP. SPRINKLER	INTERMEDIATE TEMP. SPRINKLER
SIZE OF OPEN OR RECESSED FIRE PLACE	36"	12"
FRONT OF RECESSED FIRE PLACE	60"	36"
FOAM OR WOOD BURNING STOVE	42"	12"
WATER HEATER, BOILER, FURNACE & UNINSULATED HEAT DUCT	18"	9"
UNINSULATED HOT WATER PIPES & SIZE OF CEILING OR WALL MOUNTED HOT AIR DIFFUSERS	12"	6"
FRONT OF WALL MOUNTED HOT AIR DIFFUSERS	24"	12"
HOT WATER HEATER, FURNACE, LIGHT FIXTURE	36"	18"
LESS 25% MIN.	6"	3"

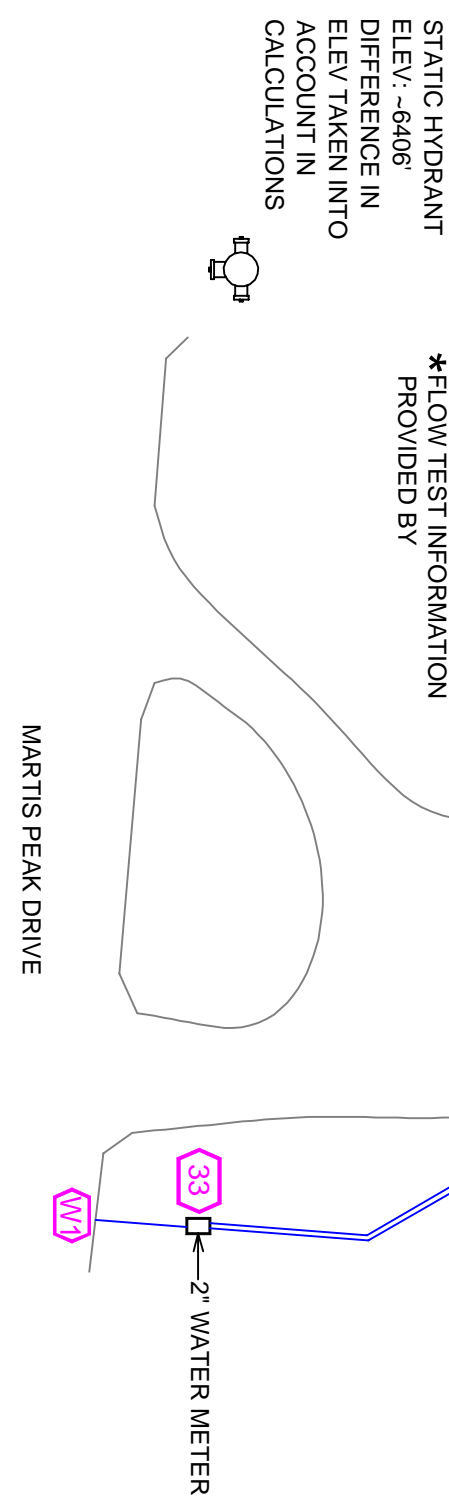
## 1 RISER DETAIL

SCALE: 1/2" = 1'-0"



## SITE PLAN

SCALE: 1" = 25'-0"



FLOW TEST INFO.	
STATIC: 70 PSI	RESID: 60 PSI
FLOW: 60 GPM	FLOW: 533 GPM
DATE: 9/4/2025	

\*FLOW TEST INFORMATION PROVIDED BY

217 ENDEAVOR LN., FERNLEY, NV 89408

PHONE: 775-943-3558

NO. DATE REVISIONS DRAWN CHECKED

GENERAL CONTRACTOR: AUTHORITY HAVING JURISDICTION: NORTH LAKE TAGE FIRE PROTECTION DISTRICT  
 ADDRESS: 886 ORIOLE WAY CTRY: INCLINE VILLAGE, NV  
 PHONE: PHONE: 775-831-0351  
 CONTACT: CONTACT:

ARCHITECT: FIELD INSPECTIONS:

ADDRESS: 1.  
 CITY: 2.  
 PHONE: 3.  
 PHONE: 4.

### FIRE SPRINKLER NOTES:

- THE PROPOSED FIRE SPRINKLER SYSTEM IS AN ANTI-FREEZE SYSTEM. 13B-2022 WITH MODIFICATIONS MANAGED BY THE AHJ AS FOLLOWS:
  - SPRINKLER PROTECTION FOR BALCONIES, DECKS, PATIOS & OTHER UNENCLOSED AREAS.
  - ANTIFREEZE TESTPORT
- THIS SPRINKLER SYSTEM IS HYDRAULICALLY CALCULATED IN THE MOST REMOTE AREA. 13B-107 TO PROVIDE 0.05 GPM/FT. SQ. FT. OVER THE MOST REMOTE AREA.
- THE NUMBER OF DESIGN SPRINKLERS SHALL INCLUDE ALL SPRINKLERS 4. ALL SPRINKLING PIPING CONCEALED ABOVE CEILINGS SHALL BE CPVC PIPING UNLESS OTHERWISE NOTED.
- ALL DIMENSIONS SHOWN ARE CENTER TO CENTER UNLESS OTHERWISE NOTED.
- AND/OR NFPA 13 REQUIREMENTS IN ACCORDANCE WITH NFPA 13B.
- TO VERIFY FRAMING STUDS FOR THE SLOPE OF SYSTEM PIPING. 8. ALL SYSTEM PIPING SHALL BE TESTED ON 10' SPACINGS AT 100 PSI.
- THE OWNER SHALL BE RESPONSIBLE FOR MAINTAINING A MINIMUM SECTION OF THE SPRINKLER SYSTEM WHERE THERE IS NO ANTI-FREEZE IN THE PIPING UPSTREAM OF THE RISER.