

NEW DISCOUNT TIRE STORE

4350 13TH AVENUE S, FARGO, ND 58103

GENERAL FIRE PROTECTION NOTES

1. ALL WORK SHALL CONFORM TO THE REQUIREMENTS OF THE REFERENCED CODE EDITIONS, INCLUDING ALL ASSOCIATED APPENDICES. INSTALLATION SHALL ALSO CONFORM TO ALL AUTHORITIES HAVING JURISDICTION (AHJs) INCLUDING LOCAL AND STATE FIRE MARSHAL REQUIREMENTS.

2. THE ELECTRONIC AUTOCAD AND PDF FORMAT FILES OF THE CONSTRUCTION DOCUMENTS ARE AVAILABLE TO THE INSTALLING FIRE PROTECTION CONTRACTOR AT NO COST. THE AUTOSPRINK FORMAT FILES ARE ALSO AVAILABLE AT A FIXED FEE. THIS SET IS MADE SOLELY AVAILABLE FOR THE FABRICATION PORTION OF THE PROJECT. CONTACT EJ ENGINEERING GROUP, INC. IN WRITING TO REQUEST. FP CONTRACTOR SHALL PROVIDE PROOF THAT PROJECT IS UNDER CONTRACT FOR INSTALLATION. THE DETAILS, DRAWINGS AND OTHER DATA INCLUDED IN THE CONSTRUCTION SET OF DOCUMENTS ARE FOR INFORMATION PURPOSES ONLY AND ARE SPECIFIC TO THIS PROJECT. ALL DRAWINGS, CONCEPTS, DETAIL INFORMATION AND DATA CONTAINED HEREIN SHALL REMAIN THE SOLE PROPERTY OF EJ ENGINEERING GROUP, INC. AND SHALL NOT BE UTILIZED FOR ANY OTHER PROJECT OR PURPOSE WITHOUT THE EXPRESSED WRITTEN CONSENT OF EJ ENGINEERING GROUP, INC.

3. THE INTENT OF THIS SET OF ENGINEERED CONSTRUCTION DOCUMENTS IS TO MEET THE LOCAL AUTHORITY HAVING JURISDICTION REQUIREMENTS FOR A PROFESSIONALLY DESIGNED AUTOMATIC FIRE SPRINKLER SYSTEM. THE INSTALLING CONTRACTOR SHALL SUBMIT PRODUCT DATA SUBMITTALS AS REQUIRED IN THE PROJECT MANUAL FOR THE INSTALLATION RECORD. THE INSTALLING CONTRACTOR SHALL BE RESPONSIBLE FOR VERIFYING AND/OR OBTAINING ALL PERMITS ASSOCIATED WITH THIS SET OF DOCUMENTS.

4. ALL WIRING OF ELECTRIC INITIATION DEVICES (HORN-STROBES, WATER SUPERVISORY AND TAMPER DEVICES) SHALL BE BY THE ELECTRICAL AND/OR ALARM CONTRACTOR.

5. THE PIPING HEREIN HAS BEEN DESIGNED TO MEET UNDERWRITERS LABORATORIES (U.L.) CORROSION RESISTANCE RATIO (CRR) MINIMUM OF 1.00. REFER TO PIPING PLANS, HYDRAULIC CALCULATIONS AND SPECIFICATIONS FOR SPECIFIC PIPE WEIGHTS AND WALL THICKNESS ASSOCIATED WITH THIS SPECIFIC PROJECT. THE UTILIZATION OF A CRR LESS THAN 1.00 IS NOT ACCEPTABLE UNDER ANY CIRCUMSTANCES. THE USE OF SUCH PIPING SUBJECTS THE CONTRACTOR TO POTENTIAL REMOVAL AND REPLACEMENT OF ALL PIPING AT HIS/HER COST.

6. A MINIMUM SAFETY FACTOR HAS BEEN INCLUDED IN THE WATER SUPPLY FOR THIS PROJECT. ADDITIONAL SAFETY FACTORS, AS REQUIRED BY LOCAL AHJ HAVE ALSO BEEN IMPLEMENTED. EJ ENGINEERING GROUP, INC. IS NOT RESPONSIBLE FOR ADDITIONAL CHANGES IN WATER SUPPLY (GPM OR PRESSURE) THAT MAY ADVERSELY AFFECT THIS AUTOMATIC FIRE SPRINKLER SYSTEM IN THE FUTURE.

7. THE FIRE PROTECTION CONTRACTOR IS FULLY RESPONSIBLE FOR THE FIELD FIT OF ALL SPRINKLERS AND PIPING. THE ACCURACY OF SCALED CONSTRUCTION DOCUMENTS IS NOT ASCERTAINABLE. ALL POSSIBLE ATTEMPTS HAVE BEEN MADE TO INCLUDE SLOPED PIPE LENGTHS AND TO MINIMIZE VARIATIONS. THEREFORE, THE FP CONTRACTOR IS RESPONSIBLE FOR THE ACCURACY OF FIELD CUT AND PRE-FABRICATED PIPING.

8. THE FP CONTRACTOR IS RESPONSIBLE FOR GENERAL WORKMANSHIP, DIMENSIONING, COORDINATION WITH OTHER TRADES AND THE ACCEPTANCE OF THE FIELD INSPECTIONS. THE COORDINATION OF FIELD INSTALLED PIPING AND SPRINKLERS TO STRUCTURAL COMPONENTS, DUCTWORK, EQUIPMENT, CEILING, LIGHTS, ETC., IS THE RESPONSIBILITY OF THIS LICENSED CONTRACTOR.

9. FIELD VERIFY ALL CONDITIONS PRIOR TO THE INSTALLATION OF ANY PIPING. FIELD ADJUSTMENTS MAY BE MADE TO THESE DOCUMENTS AS REQUIRED FOR FIELD ACCEPTANCE BY THE AHJ.

10. THE FIRE PROTECTION CONTRACTOR SHALL VERIFY THE SPRINKLER SPACING TO THE STRUCTURAL MEMBERS, ROOF DECK AND ALL OBSTRUCTIONS. PROVIDE ADDITIONAL OR RESPACE SPRINKLERS WHERE REQUIRED TO AVOID SUCH UNFORESEEN OBSTRUCTIONS TO SPRINKLER DISCHARGE PATTERNS.

11. THE FIRE PROTECTION CONTRACTOR SHALL SUBMIT, IN A TIMELY MANNER, REQUEST FOR INFORMATION (RFI) FORMS FOR ALL CHANGES NOT ASSOCIATED WITH MINOR FIELD ADJUSTMENTS, PRIOR TO MAKING THE CHANGE IN THE FIELD. CHANGES MADE TO THE APPROVED CONSTRUCTION DOCUMENTS WITHOUT AN ASSOCIATED RFI ARE NOT ACCEPTABLE AND SHALL BE CONSIDERED TO BE THE SOLE RESPONSIBILITY OF THE FIRE PROTECTION AND GENERAL CONTRACTOR. RFIs ARE NOT ACCEPTED ONCE THE CHANGE HAS BEEN MADE IN THE FIELD. THIS INCLUDES PRODUCT AND LABOR COSTS. ALL RFIs ARE TO BE SUBMITTED BY THE GC IN WRITING TO THE ARCHITECT.

12. INSTALL PIPING SYSTEM ON APPROVED HANGERS PER AHJ & NFPA. C-CLAMPS WITH RETAINING STRAPS SHALL BE PROVIDED.

13. FUTURE IMPROVEMENTS OR RENOVATIONS TO THIS AUTOMATIC FIRE SPRINKLER SYSTEM SHALL OCCUR UNDER A SEPARATE PERMIT.

14. THE UTILITY CONTRACTOR SHALL FLUSH ALL UNDERGROUND MAINS PRIOR TO CONNECTION TO OVERHEAD SYSTEM PIPING.

15. PROVIDE SLEEVES AT ALL PIPING PENETRATIONS THROUGH MASONRY AND/OR FIRE RATED WALLS, FLOORS OR CEILINGS. PACK WITH SEALANT COMMENSURATE WITH THE WALL CONSTRUCTION AND APPROVAL OF ALL AUTHORITIES HAVING JURISDICTION.

16. BACKFLOW DEVICES, WHEN UTILIZED FOR THIS PROJECT, SHALL BE INSTALLED PER LOCAL AHJ APPROVAL LIST. PRIOR TO REQUEST FOR FINAL INSPECTION, EACH BACKFLOW ASSEMBLY DEVICE SHALL BE TESTED AND APPROVED BY A CERTIFIED TECHNICIAN LICENSED TO PERFORM SUCH WORK IN THIS PARTICULAR MUNICIPALITY.

17. THIS FP CONTRACTOR SHALL PROVIDE THE OWNER WITH A COPY OF NFPA-25 & NFPA-20 AND A DETAILED DESCRIPTION OF THE MAINTENANCE REQUIRED FOR THIS PROJECT. SUCH A MAINTENANCE SUMMARY SHALL BE PROVIDED, AS IT WOULD APPEAR IN AN INDUSTRY STANDARD MAINTENANCE CONTRACT. IN ADDITION, AS A MINIMUM, TWO (2) SETS OF THE APPROVED RECORD DRAWINGS AND ASSOCIATED EQUIPMENT SUBMITTALS SHALL BE PROVIDED TO THE OWNER.

18. THIS FP CONTRACTOR SHALL INSTALL A SYSTEM DESIGN PLACARD FOR EACH FIRE RISER AND ASSOCIATED REMOTE AREA OF OPERATION AS INDICATED ON THE APPROVED CONSTRUCTION DOCUMENTS. SYSTEM DEMAND AT THE BASE OF THE RISER IN PSI AND GPM SHALL BE PROVIDED WITH THE AREA OF OPERATION SQUARE FOOTAGE AND NUMBER OF OPERATING SPRINKLERS. EACH DESIGN PLACARD SHALL BE PERMANENTLY EMBOSSED SUCH THAT DATA MAY BE AVAILABLE FOR FUTURE USE. THE UTILIZATION OF PERMANENT MARKING PENS IS NOT APPROPRIATE OR ACCEPTABLE.

19. THIS FP CONTRACTOR SHALL PROVIDE A SPARE SPRINKLER CABINET, IN AN APPROVED LOCATION, WITH ASSOCIATED SPARE SPRINKLERS, AS REQUIRED BY NFPA-13. INCLUDE TWO (2) SETS OF SPRINKLER WRENCHES FOR EACH SPRINKLER TYPE AS REQUIRED.

20. THIS FP CONTRACTOR SHALL BE LICENSED TO PERFORM THIS PARTICULAR TYPE OF WORK WITH THE STATE REGISTRAR OF CONTRACTORS AND WITH LOCAL AND STATE AUTHORITIES HAVING JURISDICTION. IN ADDITION, CONTRACTOR SHALL BE REQUIRED TO COMPLY WITH ALL PLAN REVIEW AND AHJ FIELD INSPECTIONS AS NECESSARY FOR A COMPLETELY APPROVED WORKING SYSTEM.

21. WHERE REQUIRED, THIS AUTOMATIC FIRE SPRINKLER SYSTEM SHALL BE MONITORED BY A UL OR FM LISTED CENTRAL STATION SYSTEM. ALL SYSTEMS OVER 100 SPRINKLERS SHALL BE MONITORED FOR TAMPER, TROUBLE AND FLOW.

22. ALL CONTROL VALVES SHALL BE CHAIN-LOCKED AND SECURED INCLUDING MAIN DRAIN ANGLE VALVES. ALL EXTERIOR FIRE RISERS SHALL BE LOCATED IN A SECURED AREA TO PREVENT DAMAGE DUE TO VANDALISM.

23. COMBUSTIBLE CONTENTS SHALL NOT BE MOVED INTO THE BUILDING WITHOUT THE APPROVAL OF THE AUTHORITIES HAVING JURISDICTION. IN ADDITION, THIS FP CONTRACTOR SHALL ENSURE THAT TEMPORARY INTERIOR FIRE PROTECTION IS IN PLACE PER AUTHORITY HAVING JURISDICTION. THIS INCLUDES PROVISIONS FOR TEMPORARY FIRE DEPARTMENT WATER SUPPLIES, HOSE CONNECTIONS, ETC.

24. THE GENERAL CONTRACTOR SHALL PROVIDE A FIRE DEPARTMENT LOCK BOX FOR ALL NEW CONSTRUCTION AS DELINEATED ON THE ARCHITECTURAL DOCUMENTS. DEVICES SHALL BE SIMILAR OR EQUIVALENT TO KNOX MANUFACTURING.

25. THE USE OF MECHANICAL (CUT-IN) TEES OR SIMILAR TYPE OF CONNECTIONS ARE NOT ALLOWED FOR NEW CONSTRUCTION PROJECTS. FP CONTRACTOR SHALL UTILIZE JOINING/CONNECTION METHODS SUCH AS WELDED-OUTLETS.

SCOPE OF PROJECT

PROJECT SCOPE CONSISTS OF A NEW WET-AUTOMATIC FIRE SPRINKLER SYSTEM AND ALL ASSOCIATED APPURTENANCES FOR A NEW TIRE STORE WITH SALES, STORAGE, AND INSTALLATION AREAS. NEW UNDERGROUND FIRE LINE TO BE INSTALLED BY OTHERS.

HAZARD: TIRE STORAGE PER NFPA-13 (2019 EDITION) TABLE 23.8 AND 2021 IFC W AMENDMENTS (IF ANY)

AREA OF APPLICATION - 12 ESFR SPRINKLERS OPERATING @ 15 PSI MINIMUM EACH AT THE ROOF DECK.

SPRINKLERS - K-25.2 ESFR SPRINKLERS IN-RACK SPKR'S NOT REQ'D. FOR BELOW GRATE SPKR'S SEE BELOW

COVERAGE PER SPRINKLER - 130 SF - (100 SF IN ALL ESFR)

HOSE STREAM ALLOWANCE - AREAS W/ 1'-FT MAX. DEVIATIONS 0 INSIDE

HOSE STREAM ALLOWANCE - 250 OUTSIDE

SYSTEM SHALL BE WET PIPE THROUGHOUT. HVAC ENGINEER HAS PROVIDED SUFFICIENT HEATING THROUGHOUT ALL INTERIOR PROJECT AREAS TO MAINTAIN A MINIMUM 40-DEGREES FAHR. AMBIENT TEMPERATURE 24/7.

HYDRAULIC REFERENCE POINTS ARE NUMBERED TO CORRESPOND WITH ATTACHED HYDRAULIC CALCULATIONS: SEE FP1.1 AND FP2.0 FOR HYDRAULIC REFERENCE NODE LOCATIONS.

THE INTERIOR HOSE RACK REQUIREMENT (NFPA-13) HAS BEEN OMITTED ON THESE DOCUMENTS AS MOP UP OPERATION IS INCIDENTAL TO POTENTIAL NEGATIVE ASPECTS ASSOCIATED WITH EMPLOYEE UTILIZATION OF INTERIOR HOSE. INSIDE HOSE MAY BE UTILIZED FOR EMPLOYEE FIRE RESPONSE IN LIEU OF IMMEDIATE EVACUATION AND 911 PHONE CALL INITIATION. NFPA REQUIREMENT IS FOR MOP-UP OPERATIONS ONLY. UTILIZATION OF INTERIOR HOSE BY UNQUALIFIED USERS MAY SPREAD CONFLAGRATION.

RETAIL AREA, COMP. RM & DEAD TIRE STORAGE PIPING HAS BEEN OVERSIZED BASED ON CALC'D HYDRAULICALLY DEMANDING AREA OF OPERATION (TIRE STORAGE).

REFER TO ATTACHED 8-1/2" X 11" HYD. CALCULATIONS, OWNER'S CERTIFICATE & FLOW TEST DATA FOR INFO.

RACK STORAGE GRATE IS FOR SAFE TIRE ACCESS & RETRIEVAL ONLY AND CONSISTS OF "NON-FIXED" 86% OPEN STEEL GRATE. REFER TO FP2.0 FOR AREAS WITH OPEN GRATING. NEARLY ALL GRATING IS 4'-FT WIDE OR LESS. NO A.S. REQ'D (NFPA-13). SPKR'S PROVIDED BELOW GRATING FOR AREAS OVER 4'-FT WIDE.

OWNER HAS BEEN ALERTED TO MAX. TIRE STORAGE HEIGHT OF 3'-FT BELOW SPKR DEFLECTORS AS DEPICTED ON FP3.1. OWNER SHALL NOT PLACE ANY HORIZONTAL OBSTRUCTIONS TO SPKR DISCHARGE ON GRATE (E.G. MATS, BOARDS, ETC.). THEREFORE, NFPA-13 SECTION 9.5.5.3.1.1 & USE OF ESFR SPRINKLERS ALLOWING THE OMISSION OF SPRINKLERS WITHIN THE RACKS HAS BEEN PROPERLY ADDRESSED HEREIN.

THE USE OF ESFR FOR THE TIRE INSTALLATION/SERVICE BAY AREA IS ACCEPTABLE PER NFPA-13 SECTION 14.2.7 & 23.1.1.

NFPA-13 IS REFERENCED HEREIN; SPECIFICALLY CHAPTER 23 TABLE 23.8 ESFR SPRINKLERS FOR PROTECTION OF RUBBER TIRES ON SIDE OR ON TREAD IN RACKS WITHOUT SOLID SHELVES. (NOTE: RACK STORAGE IS STEEL AND PALLETS ARE NOT USED FOR TIRE STORAGE WHATSOEVER.) PILE HEIGHT 25'-FT MAXIMUM IN A 30'-FT MAX. BLDG. HEIGHT. ACTUAL PILE HEIGHT IS 17'-8" TO 18'-8". SEE FP3.1.

PROVIDE CAPPED & THREADED 3/4" OUTLET ON DROPS TO SIDEWALL SPRINKLERS FOR DRAINAGE OF TRAPPED H2O.

OUTDOOR DISPLAY OF TIRES SHALL BE IN ACCORDANCE WITH THE LOCAL FIRE MARSHAL WHERE APPROVED.

CLEARANCE FROM SPRINKLER DEFLECTOR TO TOP OF STORAGE SHALL BE A MINIMUM OF 3'-FT PER ESFR SPRINKLER LISTING.

PER NFPA-13 SECTION 20.15.2.1; PROTECTION OF COLUMNS WITHIN RUBBER TIRE STORAGE ARE NOT REQUIRED. COLUMNS HAVE NOT BEEN PROVIDED WITHIN RACK STORAGE.

PER NFPA-13 AND THE UL LISTING FOR THE ESFR SPRINKLERS UTILIZED HEREIN MANDATE A MAXIMUM ROOF SLOPE OF 2 IN 12 (16.7%). THE ROOF SLOPE FOR THIS PROJECT IS 2'-0" RISE WITH A 60'-0" RUN (ONLY 3.3%).

FIRE ALARM SYSTEM IS NOT IN THIS CONTRACT. WIRING TO FLOW & TAMPER SWITCHES & HORN-STROBE ARE N.I.C.

FP CONTRACTOR SHALL UTILIZE A WALL MOUNTED 4-WAY FDC AS SHOWN ON FP1.1 AND CIVIL UTILITY DRAWINGS. FP CONTRACTOR SHALL COORDINATE FDC HEIGHT & THREADS SHALL BE PER LOCAL FIRE DEPT. & AHJ REQUIREMENTS.

8-INCH UNDERGROUND FIRE LINE (BY OTHERS). 6-INCH FDC SUPPLY LINE. SEE FP SHEETS AND CIVIL DRAWINGS FOR ADD'L INFO.

FP CONTRACTOR SHALL PROVIDE A 1/2-INCH CONNECTION FOR AUTOMATIC AIR RELEASE VALVE LOCATED AT A SYSTEM HIGH POINT.

SYMBOLS

Symbol	Description
9'-0"	Ceiling Height
+0'-0"	Elev. Below Top of Steel
+0'-0"	Elev. Above Finished Floor
(F)	Hydraulic Reference Points
(A)	Common Connection Point
Denotes Hanger Location	
C	Rise up or down
Electrical Light	
(OHT)	Room Hazard Classification
Sprinkler Head Cage	

SHEET INDEX

FP1.0 FIRE PROTECTION COVER SHEET
FP1.1 SITE PLAN AND FLOW TEST
FP2.0 FIRE PROTECTION PLANS
FP3.0 FIRE PROTECTION NOTES & DETAILS
FP3.1 FIRE PROTECTION SECTION & DETAILS

SPRINKLER COUNT

TOTAL NUMBER OF SPRINKLERS
THIS PROJECT: 116 SPRINKLERS.
SEE FIRE PROTECTION SHEETS
FOR SPECIFIC PER-SHEET TOTALS.

GENERAL IDENTIFICATION NOTE:

PROVIDE METAL EMBOSSED DESIGN PLACARDS, IDENTIFICATION SIGNS AND PIPE LABELS ON ALL SYSTEM EQUIPMENT AND PIPING.

NOTE:

USE OF FOREIGN-MADE PIPING, FITTINGS, COUPLINGS OR WELDED OUTLETS SHALL NOT BE ALLOWED! IF DISCOVERED SUCH PRODUCT SHALL BE REMOVED AT CONTRACTOR'S EXPENSE AND COSTS ASSOCIATED WITH PROJECT DELAYS SHALL ALSO BE THE RESPONSIBILITY OF THE FP AND GENERAL CONTRACTORS. NEGOTIATIONS FOR ADDITIONAL WARRANTIES OR CREDITS SHALL NOT BE CONSIDERED. MUST COMPLY WITH THE BUY AMERICAN ACT.

HIGH VOLUME LOW SPEED (HVLS) FAN NOTES:

WHERE HVLS FANS ARE INSTALLED, THEY SHALL INTERCONNECT TO THE FIRE ALARM SYSTEM FOR WATER FLOW AND ANY OTHER DETECTION DEVICES IN THE AREA OF COVERAGE. HVLS FANS SHALL BRAKE TO A STOP UPON ALARM INITIATION. REFER TO ELECTRICAL AND/OR FIRE ALARM SHOP DRAWINGS FOR ADDITIONAL INFORMATION ON INTERLOCKS AND WIRING OF THE HVLS. INITIATION DEVICES AND ANNUNCIATION DEVICES. HVLS FANS SHALL COMPLY WITH NFPA-13 REQUIREMENTS.

PROJECT TEAM

AUTHORITY HAVING JURISDICTION (AHJ):
FARGO FIRE DEPARTMENT
701.241.8139

ARCHITECT:
PLUMP ENGINEERING, INC.
914 E. KATELLA AVE.
ANAHEIM, CA 92805
714.385.1835

CIVIL ENGINEER:
RA SMITH
16745 W. BLUEMOUND ROAD
BROOKFIELD, WI 53005
262.781.1000

MEP ENGINEER:
DIALECTIC
310 WEST 20TH STREET, SUITE 200
KANSAS CITY, MO 64108
816.997.9620

STRUCTURAL ENGINEER:
BUILDING DESIGN STUDIO
2117 SOUTH 48TH STREET, SUITE 103
TEMPE, AZ 85282
480.894.0399

PROJECT DATA

ADDRESS:
DISCOUNT TIRE
4350 13TH AVENUE S
FARGO, ND 58103

OWNER:
HALLÉ PROPERTIES, LLC.
20225 NORTH SCOTTSDALE ROAD
SCOTTSDALE, ARIZONA 85255

USE:
RETAIL TIRE STORAGE, SALES, AND
INSTALLATION

AREA SEPARATION WALL:
NON-SEPARATED

OCCUPANCY SEPARATION WALL:
NON-SEPARATED

OCCUPANCY:
M & S-1

TYPE OF CONSTRUCTION:
II-B, FULLY SPRINKLERED

BUILDING HEIGHT:
SINGLE STORY

BUILDING AREA:
(SEE DESIGN BLOCK ON FP2.0)

DISCOUNT TIRE FARGO

4350 13TH AVE S
FARGO, ND

DRAWING TITLE:
Discount Tire Fargo

PROJECT NO.:
25C008

DRAWN BY:
NLS

PRINT NO:
FP1.0

DATE:
08/xx/2025

APPROVED BY:
XXX

REVISIONS

DATE

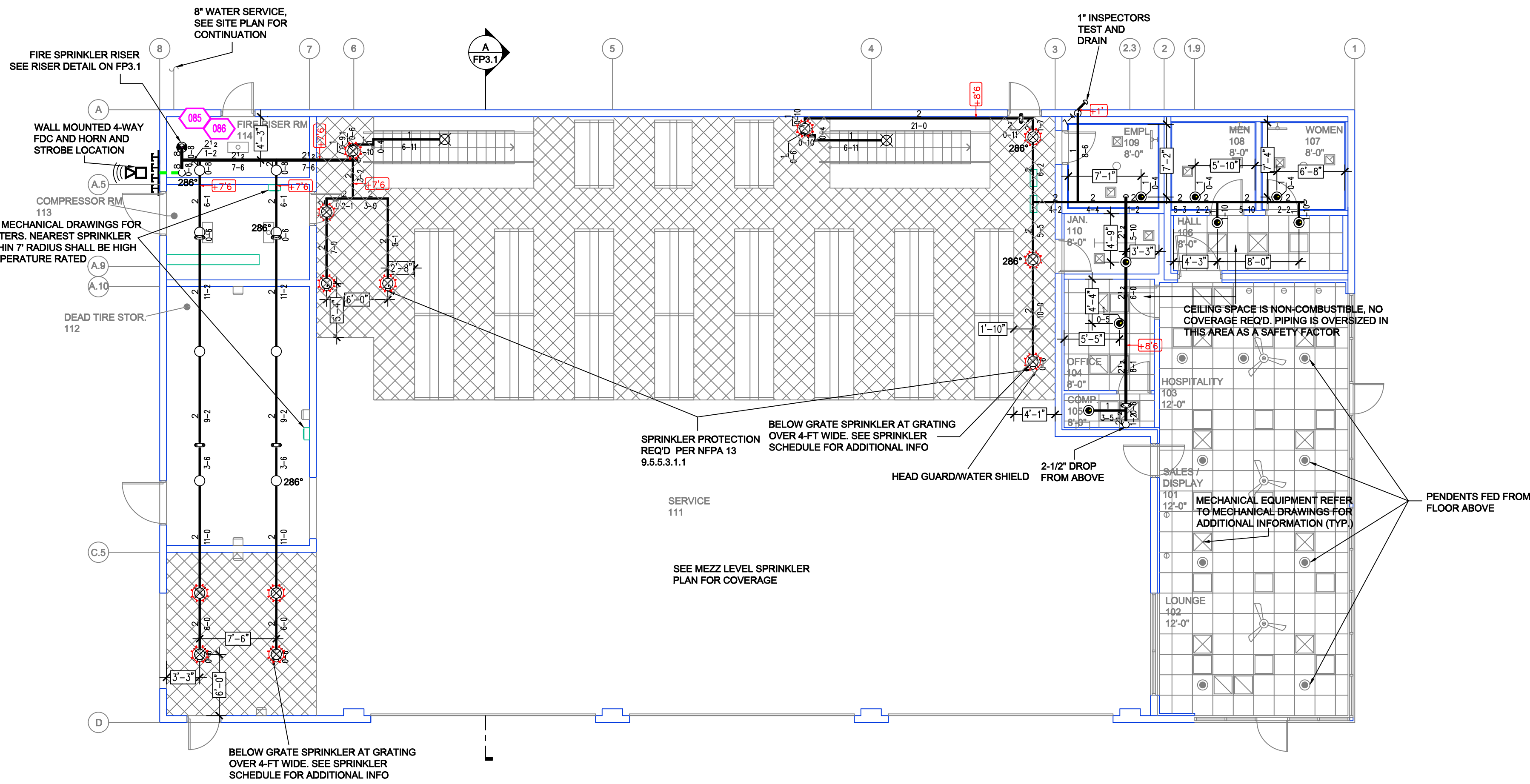
SYSTEM INFORMATION

OCCUPANCY: M & S-1 CONSTRUCTION TYPE: II-B DESIGN: NFPA 13, 2019

SYSTEM # X
SYSTEM TYPE: X
VALVE SIZE: X
WALL TYPE: X
T SPRINKLERS: X

PIPE SCHEDULE

Steel
Schedule 10/40



LEVEL 1 FIRE SPRINKLER PLAN
SCALE= 1/8" : 1'-0"

K-25.2 ESFR HEADS ARE NOT RATED FOR 286°

SPRINKLER HEAD LEGEND

SYM	CNT	POSITION	FINISH	TEMP	K	NPT	SIN	MFG.	MODEL#	ESCAPTECHON	MAX SPACING
⊗	14	UPRIGHT	CHROME	200/286	5.60	1/2"	TY313	Typo	TY-FRB	N/A	100 SQFT
○	12	UPRIGHT	BRASS	200/286	5.60	1/2"	TY3131	Typo	TY-FRB	N/A	130 SQFT
●	17	PENDENT	CHROME	200	5.60	1/2"	TY3231	Typo	TY-FRB	RECESSED	LN+ 225SQFT OH: 130 SQFT
⊙	66	PENDENT	BRASS	212	25.20	1"	TY6226	Typo	ESFR-25	NONE	100 SQFT
◁	6	SIDEWALL	BRASS	200	5.60	1/2"	TY3331	Typo	TY-FRB	NONE	130 SQFT
◁	1	SIDEWALL	BRASS	200	8.00	1"	TY4335	Typo	DS-6	NONE	130 SQFT
◁	116	TOTAL SPK									

CALC PLACARD

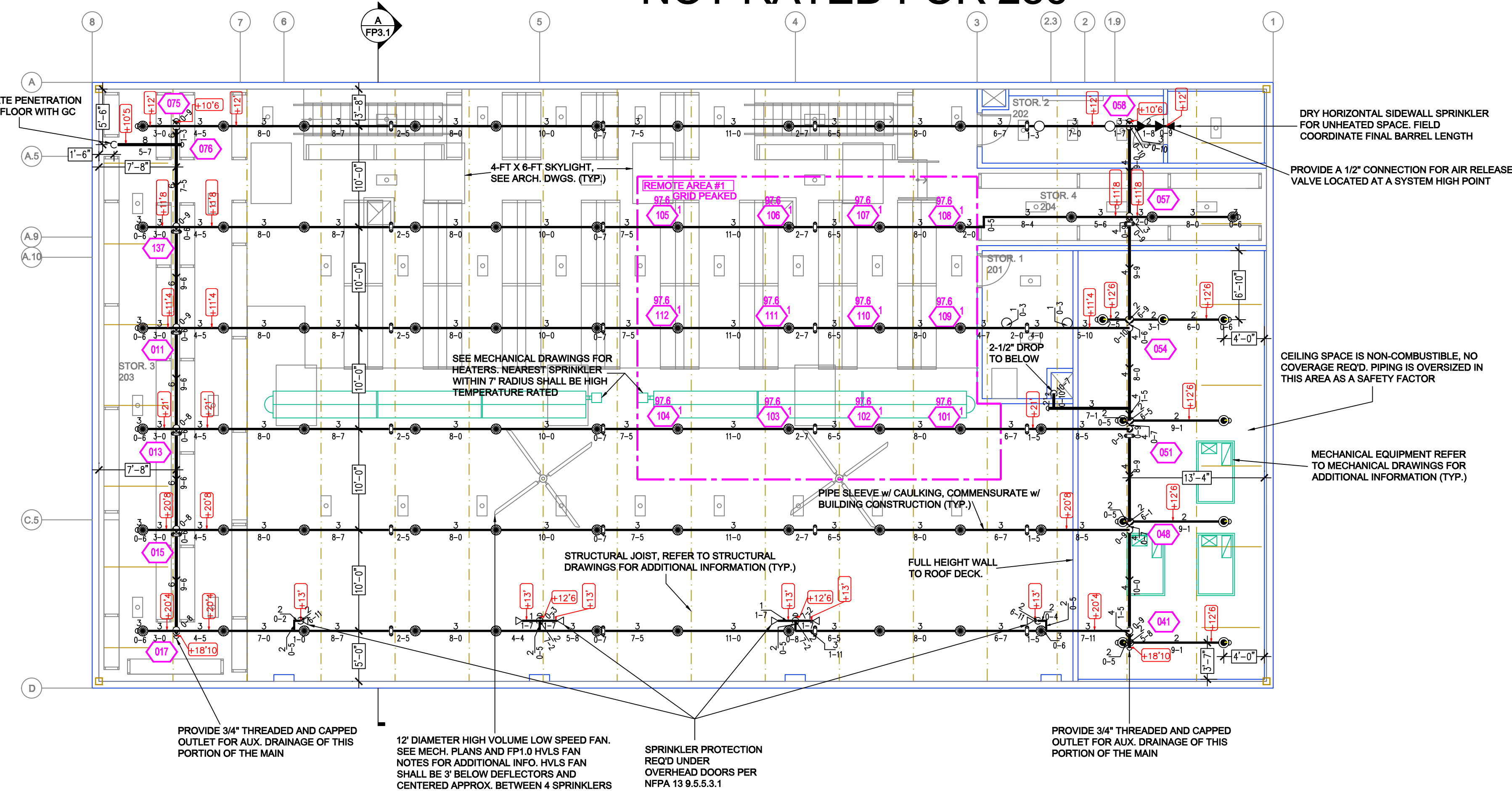
Design Area #: 1 HAZARD: Storage
Zone: 1 System Type: Wet
Location:

Flowing Outlets: 12
Density: 1 Remote Area: 1027
Flow: 1437.0 gpm @ 40.1 psi
Calculation Safety: 5.7 psi
Includes 250 gpm Hose allowance

NOTE:
12 ESFR SPRINKLERS AT 15PSI ACROSS 3
BRANCH LINES HAVE BEEN CALCULATED

PIPE LEGEND

—	BLACK STEEL FIRE SPRINKLER PIPING
- - -	FIRE SPRINKLER FDC PIPING



MEZZ LEVEL FIRE SPRINKLER PLAN
SCALE= 1/8" : 1'-0"

SYSTEM INFORMATION

OCCUPANCY: M & S-1 CONSTRUCTION TYPE: II-B DESIGN: NFPA 13, 2019

SYSTEM #	X
SYSTEM TYPE	X
VALVE SIZE	X
SPRINKLER	X
PIPE SCHEDULE	X

PIPE SCHEDULE

Steel	Schedule 10/40
-------	----------------

DISCOUNT TIRE FARGO

4350 13TH AVE S
FARGO, ND

DRAWING TITLE: Discount Tire Fargo
PROJECT NO.: 25C908
DRAWN BY: JNS
PRINT NO: FP22.0
DATE: 08/xx/2025
APPROVED BY: XXX

REVISIONS	DATE

FP-2.0

