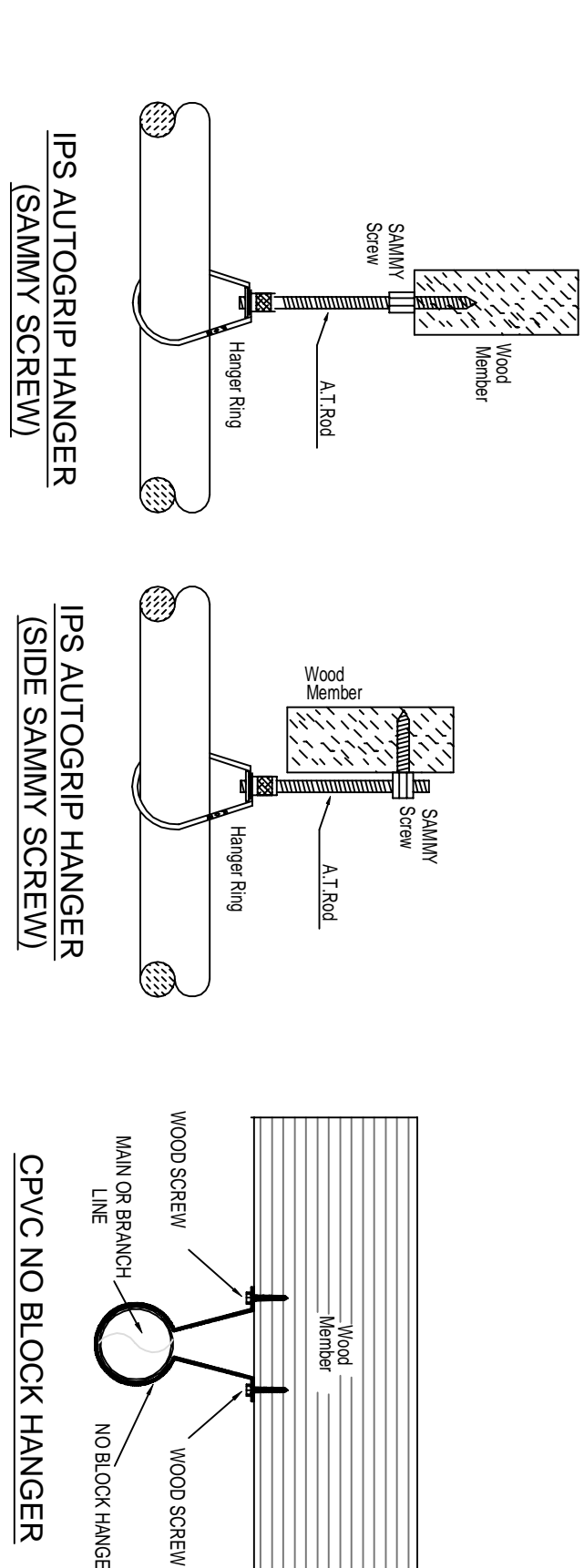


MAXIMUM DISTANCE BETWEEN HANGERS (FT.-IN.)									
NOMINAL PIPE SIZE (IN.)									
SPRINKER PIPE	3/4"	1"	1 1/2"	2"	2 1/2"	3"	4"	6"	8"
	5'-6"	6'-0"	6'-6"	7'-0"	8'-0"	9'-0"	10'-0"	NA	NA

NFPA 13 HANGER SPACING



## HANGER DETAILS

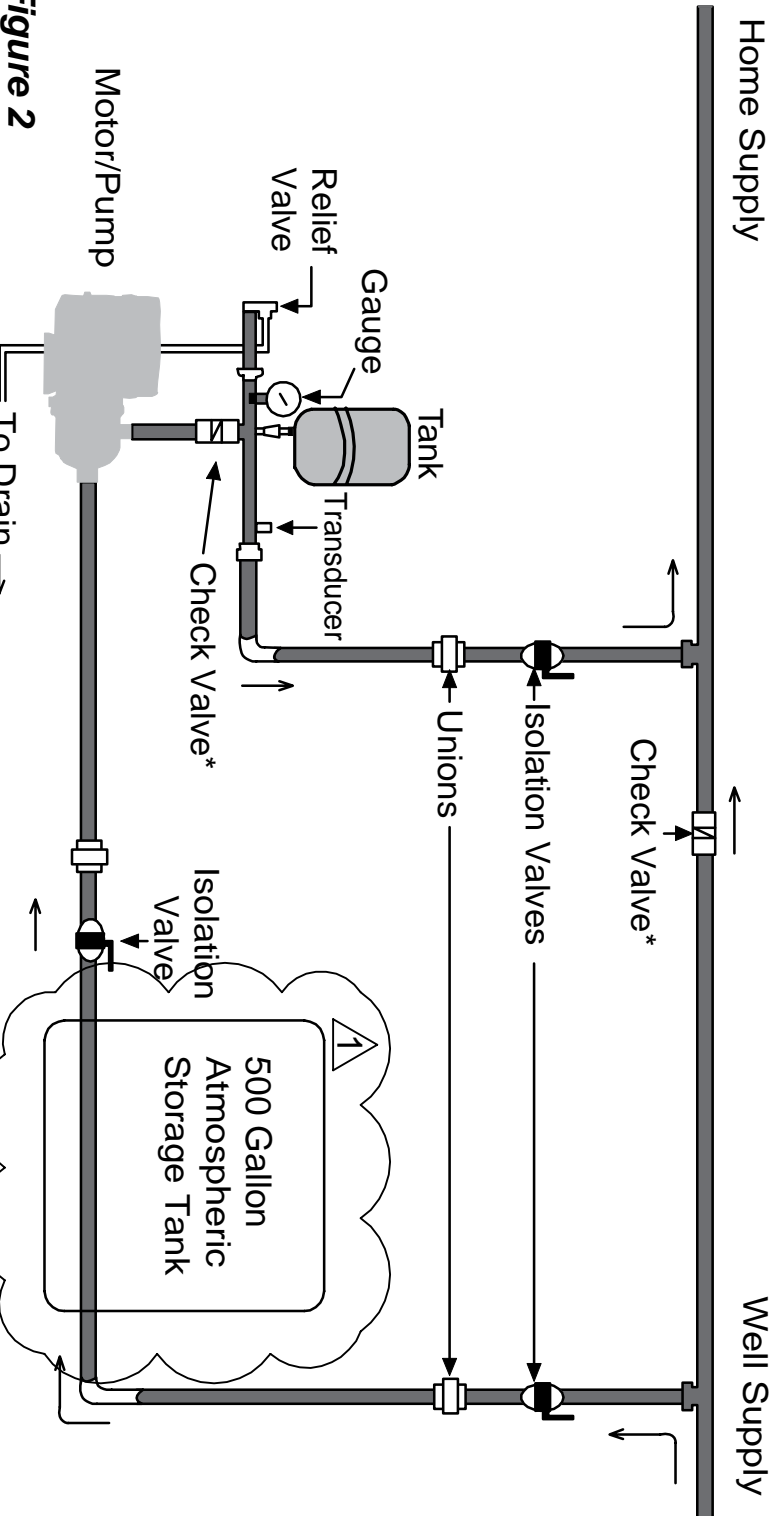


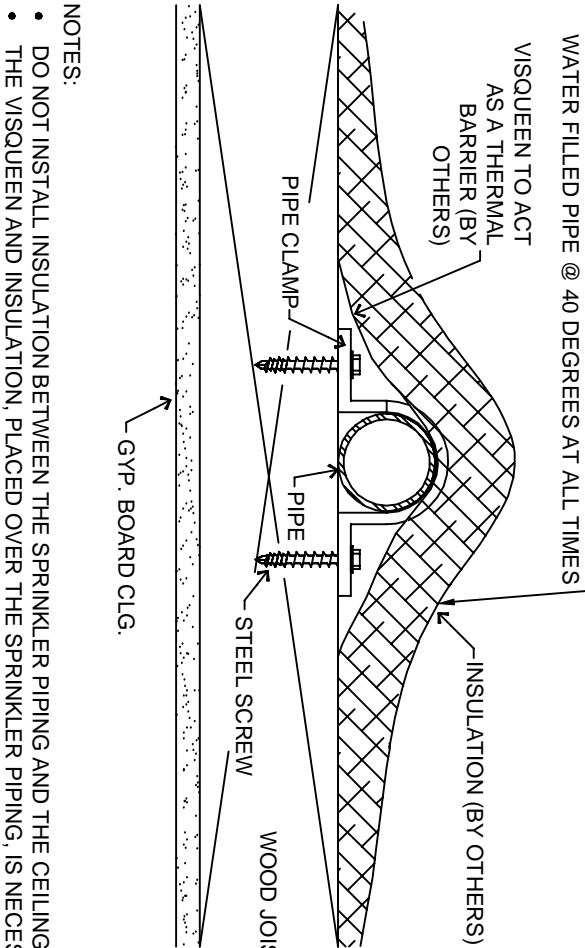
Figure 2

## 2 TANK & PUMP DETAIL

SCALE: NTS

- NOTES:
- DO NOT INSTALL INSULATION BETWEEN THE SPRINKLER PIPING AND THE CEILING.
  - THE VISQUEEN AND INSULATION PLACED OVER THE SPRINKLER PIPING IS NECESSARY
  - ADEQUATE HEATING MUST BE MAINTAINED BY OTHERS, AT ALL TIMES

## TENTING DETAIL



BRING RAFTERS OUT TOP OF BOTTOM CHORDS AND BRACE SPRINKLER PIPING AS CLOSE TO WARM SPACE AS POSSIBLE.

### RISER LEGEND

- 2" UNDERGROUND WATER SERVICE (BY OTHERS)
- (FLUSHING & TESTING OF THE UNDERGROUND SHALL BE COMPLETED PRIOR TO THE START OF THE PROJECT. UNDERGROUND PAPERS ARE TO BE SUPPLIED TO THE "FP" CONTRACTOR BY THE G.C.)
- 2"x1" GROOVED REDUCER
- 1" AMES 2000S BACKFLOW PREVENTER
- 1" SIZES MAINTAIN 1/2" FLOW SWITCH, PRESSURE GAUGE, & TESTER DOWNSTREAM
- 1" THREAD X CPVC ADAPTER
- 1" TO SYSTEM
- MAIN DRAIN PIPED TO OUTSIDE
- ALL WIRING/INTERFACING OF ALARMS BY OTHERS

\* ALL SPRINKS PENETRATING THE EXTERIOR WALL TO BE SEAMWELDED

## 1 RISER DETAIL

SCALE: 1/2" = 1'-0"

SYM.	CNT.	POSITION	FINISH	TEMP.	K.	WPT.	SIN.	WFS.	MODEL#	RECOMMENDATION
18	PERCENT	WHITE	212	4.50	1/2"	RAM16	RELIABLE	RFC	CONCEALED	
19	TOTAL SPRINKLERS	WHITE	165	4.50	1/2"	RAM16	RELIABLE	RFC	CONCEALED	

## SPRINKLER HEAD LEGEND

### GENERAL NOTES

- INTERNATIONAL RESIDENTIAL CODE (2018)
  - MAIN FLOOR = 1298 S.F.
- INSTALLATION STANDARDS
  - SPRINKLER SYSTEM DESIGNED AND INSTALLED PER NFPA-13D (2019)
- SPRINKLER PIPE TYPES:
  - WATER - 1" BRANCH LINES TO BE SPEARS CPVC PIPING WITH CEMENTED FITTINGS
  - 1" MAIN TO BE SPEARS CPVC PIPING WITH CEMENTED FITTINGS
- DESIGN CRITERIA
  - ALL SYSTEMS ARE DESIGNED AND SELECTED ACCORDING TO NFPA-13D WITH SPRINKLER FLOW DETERMINED BY REQUIREMENTS SET FORTH BY NFPA 13D AND SPRINKLER HEAD LISTING DATA. PIPING IS SIZED ACCORDINGLY BY HYDRAULIC CALCULATIONS. REFER TO SPRINKLER HEAD DATA SHEETS FOR DISCHARGE CRITERIA.
  - SPRINKLER PROTECTION IS PROVIDED FOR LIVING AREAS AND THE FOLLOWING AREAS PER 13D:
    - CLOSETS OVER 24 S.F.
    - BATHROOMS OVER 55 S.F.
    - SPRINKLER PROTECTION IS NOT PROVIDED FOR THE FOLLOWING AREAS:
      - CLOSETS UNDER 24 S.F. PER 8.3.3
      - BATHROOMS UNDER 55 S.F. PER 8.3.3
      - PANTRY OVER 24 S.F.
      - ATTIC PER 8.3.5
      - CRAWL SPACE PER 8.3.5
  - NOTES:
    - ALL MATERIAL TO BE NEW AND MEET U.L. STANDARDS
    - HANGERS TO BE INSTALLED IN ACCORDANCE WITH NFPA 13 (2019) - SEE PLAN FOR HANGING REQ.

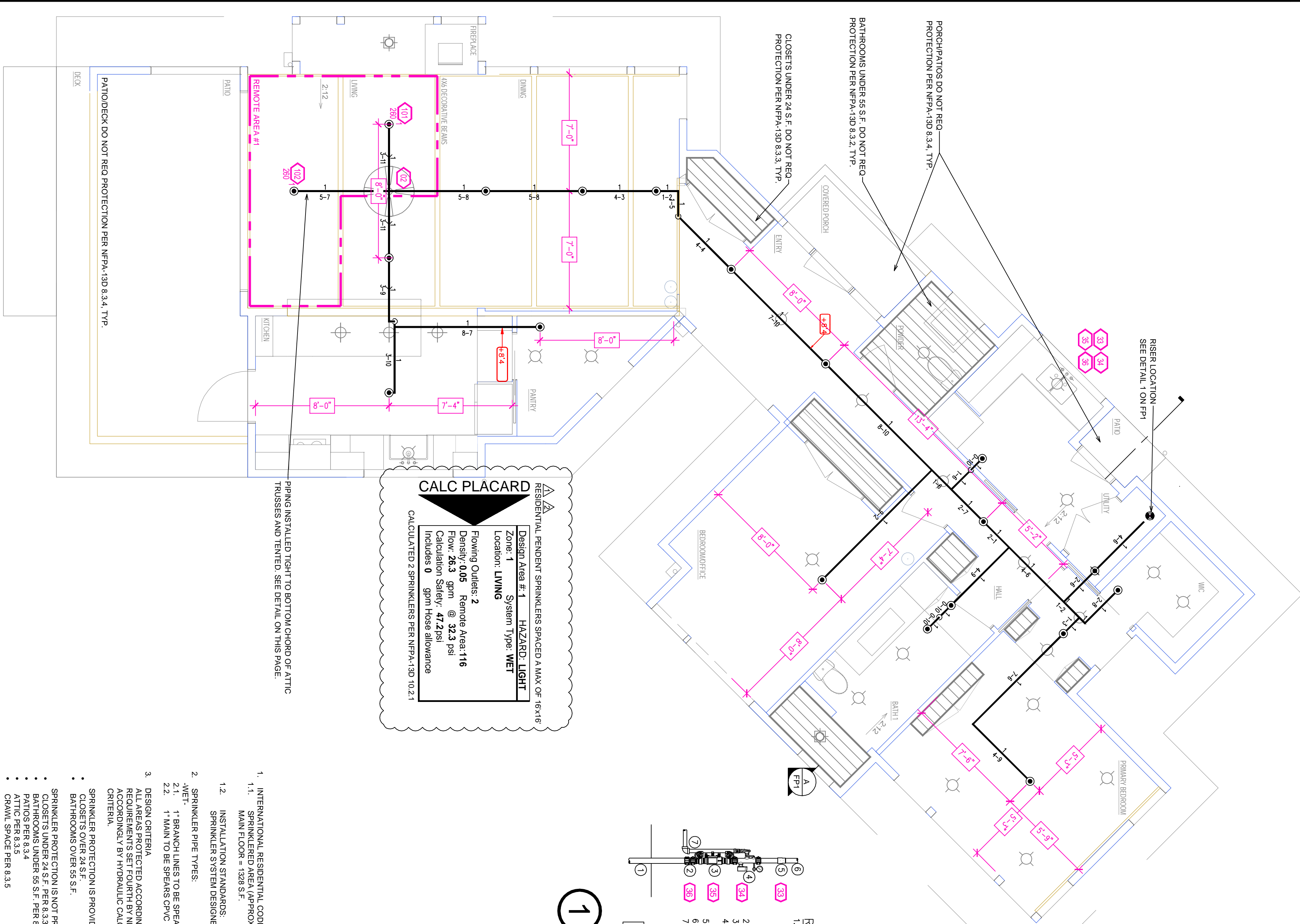
SYMBOLS USED ON DRAWINGS:

**42-8** PIPE ELEVATION A.F.F.

**CH1** ROOM HAZARD CLASSIFICATION (ALL ROOMS ARE CONSIDERED LIGHT HAZARD UNLESS NOTED)

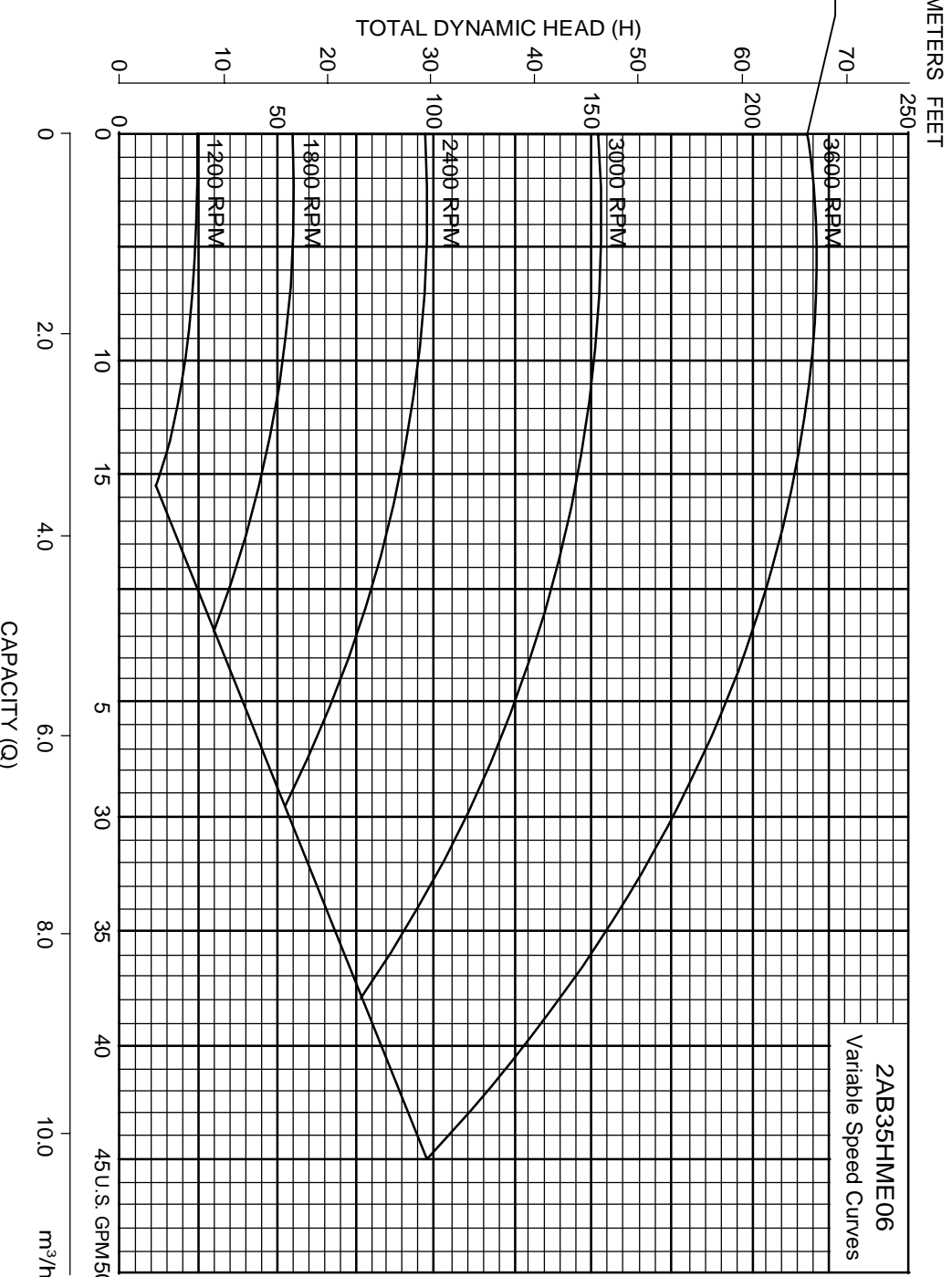
**CH** HYDRAULIC CALCULATION JUNCTION POINT

- SCOPE OF WORK:
  - WET ZONE THAT WILL COVER THE ENTIRE MAIN FLOOR AND COVERED IN ACCORDANCE WITH THE LOCAL AUTHORITY HAVING JURISDICTION AND PER NFPA 13D (2019).



## MAIN FLOOR FIRE PROTECTION PIPING PLAN

SCALE: 1/4" = 1'-0"



NOT IN SCOPE OF PROJECT

170' 2" WATER LINE (BY OTHERS)

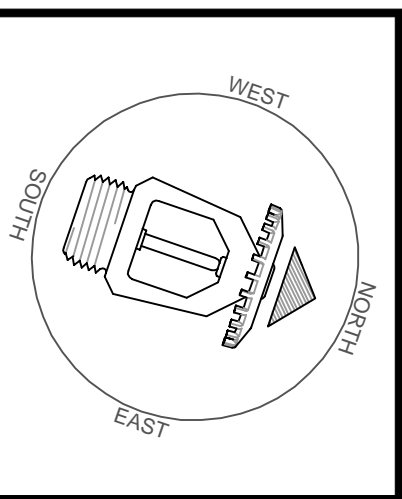
PUMP HOUSE AND WELL HEAD

## SITE PLAN

SCALE: 1" = 25'-0"

## BEEDLE RESIDENCE

12490 SW BANK RD VASHON, WA 98070



REVISIONS
1 9/3/2025 REVISIONS
2 9/15/2025 REVISIONS

Drawing Title	FIRE PROTECTION PLAN
Project No.	4066303
Drawn By	DWG
Scale	3/8" = 1'-0"
Date	8/7/25
DWG Type	SUBMITTAL DWG
Printed No.	25250-009