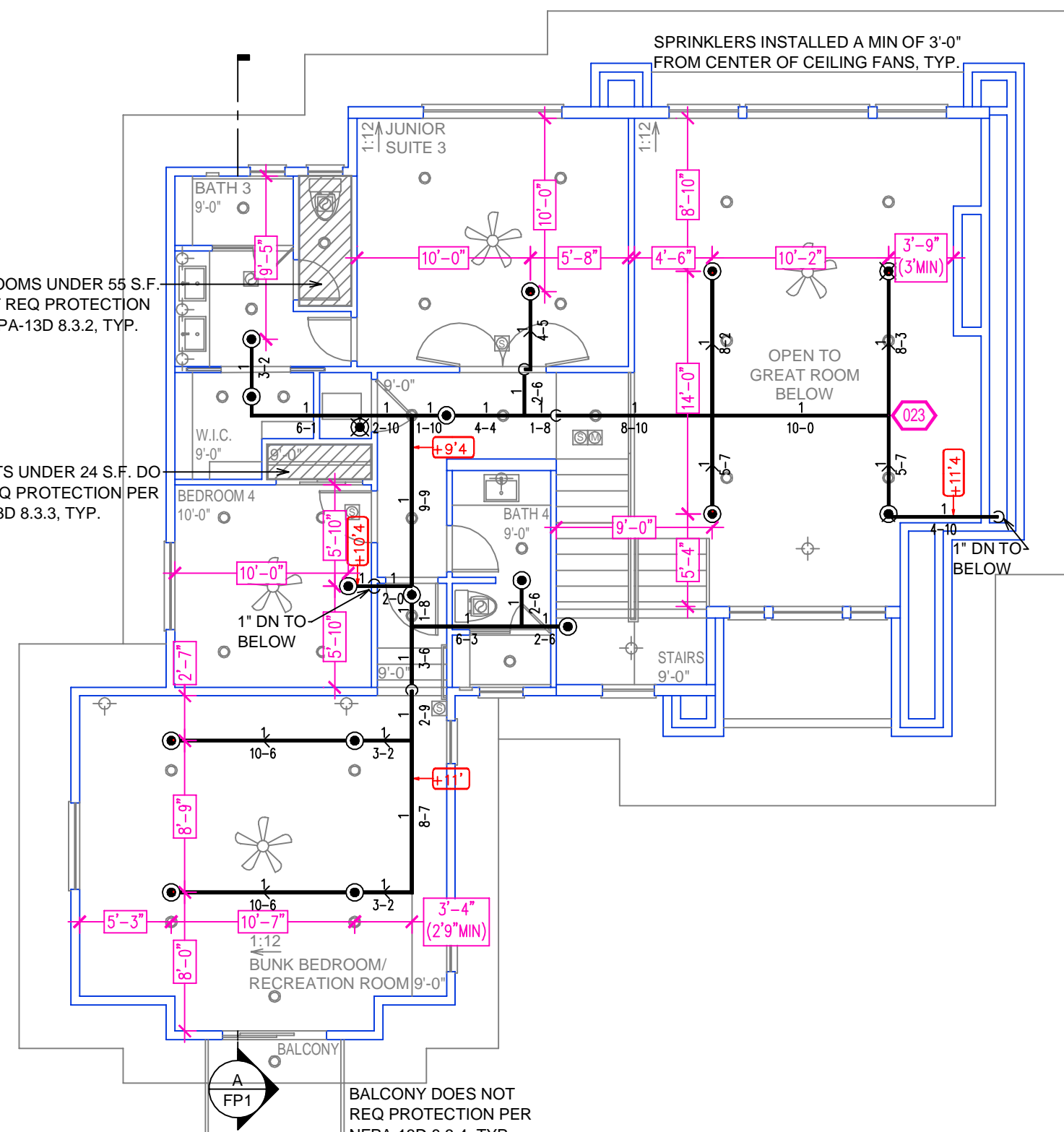


REMOTE AREA 1		REMOTE AREA 2	
Hydraulically Calculated System		Hydraulically Calculated System	
This system as shown on <u>Fire Protection Plan</u>		This system as shown on <u>Fire Protection Plan</u>	
company print no. <u>FP-1</u> dated <u>7/1/2025</u>		company print no. <u>FP-1</u> dated <u>7/1/2025</u>	
for <u>10633 CARSON RANGE ROAD</u>		for <u>10633 CARSON RANGE ROAD</u>	
at <u>MASTER SUITE</u> contract no. <u>000</u>		at <u>MASTER SUITE</u> contract no. <u>000</u>	
is designed to discharge at a rate of <u>0.05</u> gpm		is designed to discharge at a rate of <u>0.05</u> gpm	
(L/min) per sq ft (m) of floor area over a maximum area of		(L/min) per sq ft (m) of floor area over a maximum area of	
<u>NFPA 13D - 2 SPRINKLERS</u> sq ft (m) when supplied		<u>NFPA 13D - 1 SPRINKLER</u> sq ft (m) when supplied	
with water at the rate of <u>40.0</u> gpm (L/min)		with water at the rate of <u>25.0</u> gpm (L/min)	
at <u>35.2</u> psi (bars) at the base of the riser.		at <u>66.9</u> psi (bars) at the base of the riser.	
Hose stream allowance of <u>5</u> gpm (L/min)		Hose stream allowance of <u>5</u> gpm (L/min)	
is included in the above.		is included in the above.	
Occupancy classification <u>N/A</u>		Occupancy classification <u>N/A</u>	
Commodity classification <u>N/A</u>		Commodity classification <u>N/A</u>	
Maximum storage height <u>N/A</u>		Maximum storage height <u>N/A</u>	
Safety factor <u>9.8</u>		Safety factor <u>38.1</u>	



SPRINKLER HEAT ZONES:		
HEAT SOURCE:	ORDINARY TEMP SPRINKLER	INTERMEDIATE TEMP SPRINKLER
SIDE OF OPEN OR RECESSED FIRE PLACE	36"	12"
FRONT OF RECESSED FIRE PLACE	60"	36"
COAL OR WOOD BURNING STOVE	42"	12"
RANGE/OVEN, HOT AIR FLUES & UNINSULATED HEAT DUCT	18"	9"
UNINSULATED HOT WATER PIPES & 250-499 WATT LIGHTS	12"	6"
SIDE OF CEILING OR WALL MOUNTED HOT AIR DIFFUSERS	24"	12"
FRONT OF WALL MOUNTED HOT AIR DIFFUSERS	36"	18"
HOT WATER HEATER, FURNACE, LIGHT FIXTURE 0-250 WATT	6"	3"

NFPA 13 - Table 9.2.2.1(a) Maximum Distance Between Hangers (ft-in.)		Nominal Pipe Size (in.)									
		1/2	1	1 1/4	1 1/2	2	2 1/2	3	4	6	8
Steel pipe except threaded lightwall	N/A	12-0	12-0	12-0	15-0	15-0	15-0	15-0	15-0	15-0	15-0
Threaded lightwall steel pipe	N/A	12-0	12-0	12-0	15-0	15-0	15-0	15-0	15-0	15-0	15-0
Copper tube	8-0	8-0	10-0	10-0	12-0	12-0	12-0	15-0	15-0	15-0	15-0
CPVC	5-6	6-0	6-6	7-0	8-0	9-0	10-0	N/A	N/A	N/A	N/A

**PROJECT SUMMARY:**

PROJECT NAME: 10633 CARSON RANGE ROAD

PROJECT ADDRESS: 10633 CARSON RANGE RD, TRUCKEE, CA

APN: 107-140-005

PROJECT TYPE: ☒ NEW ☐ T.I.

TYPE OF CONSTRUCTION: V

OCCUPANCY GROUP(S): R3

OCCUPIED LEVELS: 2

TOTAL SPRINKLERED AREA: 5455 SQ. FT.

NFPA CODE REQUIREMENT: ☐ NFPA 13 ☐ NFPA 13R ☒ NFPA 13D

NUMBER OF SYSTEMS: 1

SYSTEM TYPE(S): ☐ WET ☒ ANTI-FREEZE ☐ DRY ☐ PREACTION

TOTAL SPRINKLERS: 46

SPECIAL NOTES: SEE FIRE SPRINKLER NOTES THIS SHEET

NO.	DATE	REVISIONS	DRAWN	CHECKED

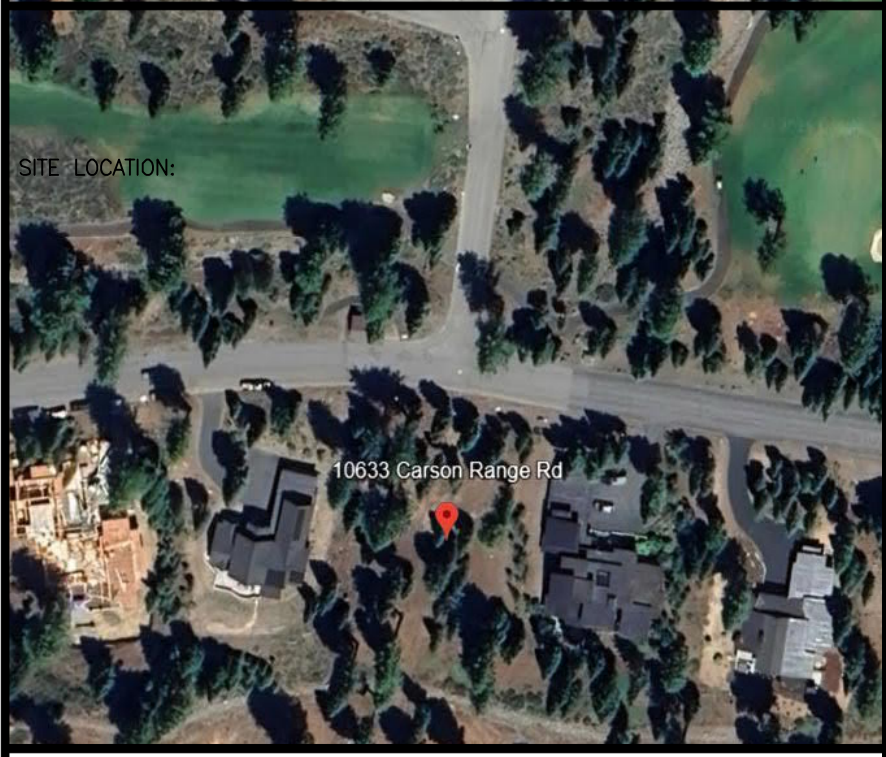
**FIRE SPRINKLER NOTES:**

- THE PROPOSED FIRE SPRINKLER SYSTEM IS AN ANTI-FREEZE SYSTEM AND SHALL BE DESIGNED AND INSTALLED IN ACCORDANCE WITH NFPA 13D.
- THIS SPRINKLER SYSTEM IS HYDRAULICALLY CALCULATED IN ACCORDANCE WITH NFPA 13D TO PROVIDE 0.05 GPM PER SQ. FT. OVER THE MOST REMOTE AREA.
- THE NUMBER OF DESIGN SPRINKLERS SHALL INCLUDE ALL SPRINKLERS WITHIN A COMPARTMENT UP TO A MAXIMUM OF 2 SPRINKLERS.
- ALL SPRINKLER PIPING CONCEALED ABOVE CEILINGS SHALL BE CPVC PIPING UNLESS OTHERWISE NOTED.
- ALL DIMENSIONS SHOWN ARE CENTER TO CENTER U.O.N.
- ALL HANGERS SHALL BE INSTALLED IN ACCORDANCE WITH NFPA 13D AND/OR NFPA 13 REQUIREMENTS.
- HOLES THROUGH SOLID STRUCTURAL MEMBERS SHALL BE PERMITTED TO SERVE AS HANGERS FOR THE SUPPORT OF SYSTEM PIPING.
- ALL SYSTEM PIPING SHALL BE TESTED FOR LEAKAGE AT NORMAL SYSTEM OPERATING PRESSURE.
- THE OWNER SHALL BE RESPONSIBLE FOR MAINTAINING A MINIMUM TEMPERATURE OF 40° FAHRENHEIT TO PROTECT FROM FREEZING, THE SECTIONS OF THE SPRINKLER SYSTEM WHERE THERE IS NO ANTI-FREEZE IN THE PIPING (UPSTREAM OF THE RISER).

SYM	QTY	TYPE	MFG.	MODEL#	NPT	K	TEMP	FINISH	S.I.N.
⊗	32	CONCEALED	SENJ	RC-RES	1/2"	4.9	162	WHITE	SS8464
⊗	3	CONCEALED	SENJ	RC-RES	1/2"	4.9	205	WHITE	SS8464
⊗	11	SEMI-RECESS	SENJ	FR-RES	1/2"	4.9	205	WHITE	SS4451

46 TOTAL SPRINKLERS ON THIS SHEET

FIRE SPRINKLER SYMBOLS		
⊗	AUTOMATIC SPRINKLER RISER	+13" ELEV. BELOW DECK OR TOS
⊕	EARTHQUAKE BRACING	+12'-9" ELEV. ABOVE FINISHED FLOOR
⊕	2-WAY & 4-WAY	— CHANGE ELEVATION UP
⊕	PIPE HANGER & TYPE DESIGNATION	— CHANGE ELEVATION DN
⊕	HYDRAULIC REF PT	— INSPECTORS TEST
⊕	GRID OR THRD CAP	— AUX DRAIN
⊕	GRID COUPLING	△ REVISION NOTATION
⊕	TYPICAL POINT OF CONNECTION (POC)	△ LOCAL ALARM



PROJECT NAME: FIRE SPRINKLER PLANS FOR

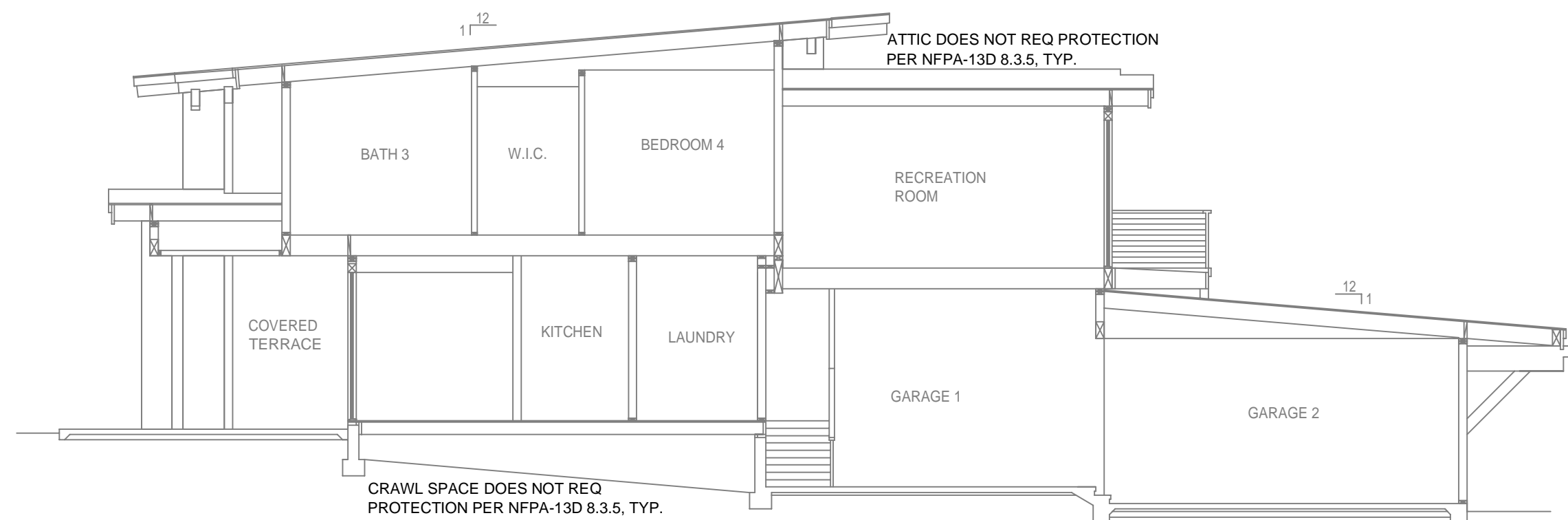
**10633 CARSON RANGE ROAD**

10633 CARSON RANGE ROAD  
TRUCKEE, CA 96161

STAMP:

DRAWING TITLE: **FIRE SPRINKLER PLAN**

SCALE: <u>1/8"=1'-0"</u>	JOB NO.: <u> </u>
DRAWN BY: <u> </u>	DWG NO.: <u> </u>
BORN ON DATE: <u>7/1/2025</u>	FP-2
FILE: <u> </u>	SHEET <u>1</u> OF <u>2</u>



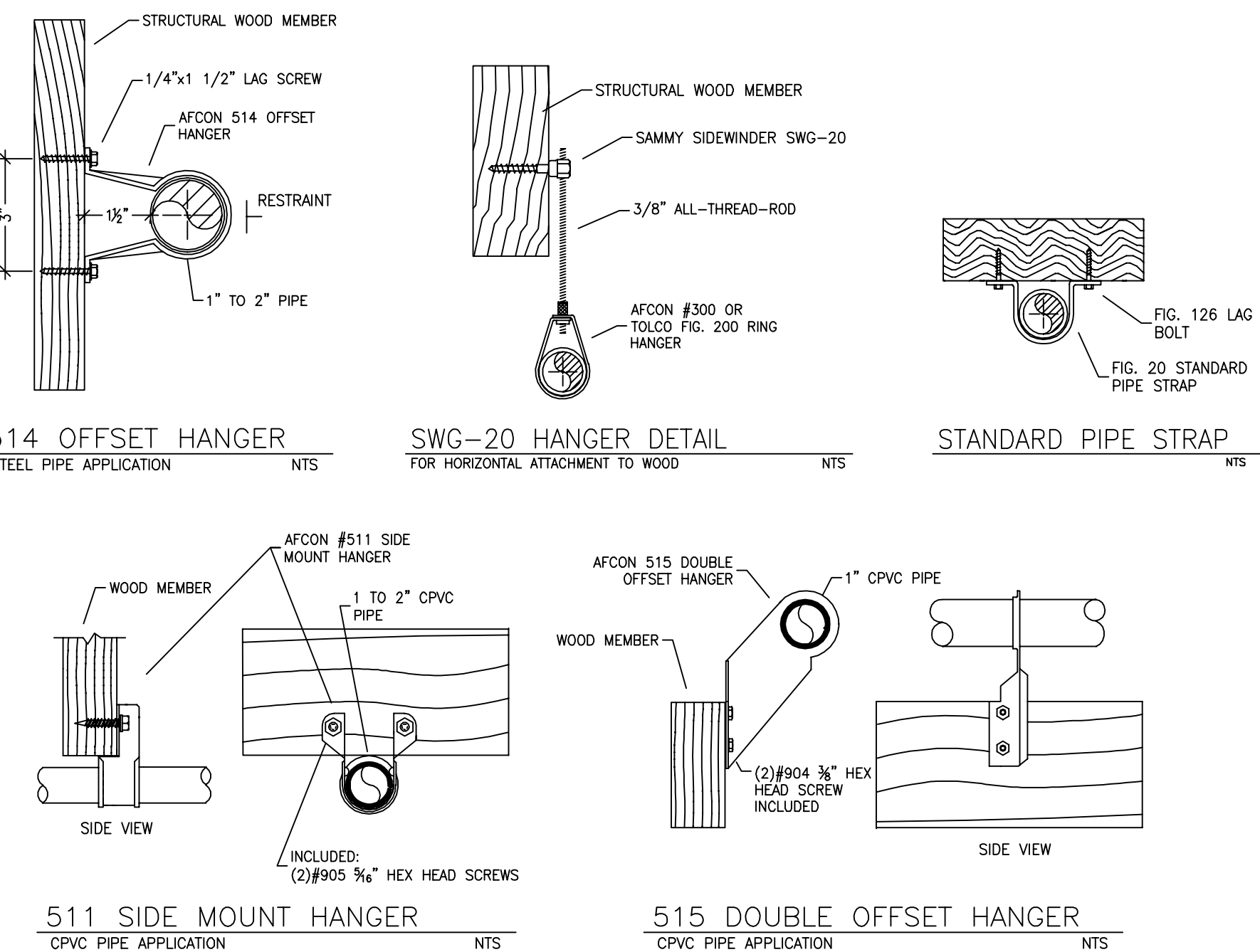
**SPRINKLER SPACING**

- A SINGLE PENDENT SPRINKLER MAY BE SPACED AT A MAXIMUM OF 20'x20' (400SQ. FT.) OR UP TO 10' OFF A WALL (MINIMUM 8'-0" BETWEEN SPRINKLERS).
- TWO OR MORE HEADS IN A COMPARTMENT SHALL BE SPACED AT A MAXIMUM OF 18'x18' (324SQ. FT.) OR UP TO 9' OFF A WALL UNO. (MINIMUM 8'-0" BETWEEN SPRINKLERS).
- SPRINKLERS SHALL BE MEASURED AT PERPENDICULAR ANGLES TO WALLS AND ALONG THE SLOPES OF CEILINGS.

THIS FIRE SPRINKLER SYSTEM UTILIZES THE NOBLE COMPANY FIREFIGHTER ELIMINATOR ANTI-FREEZE SOLUTION

PROJECT SQUARE FOOTAGES

LOWER LEVEL = 3663 S.F.  
UPPER LEVEL = 1792 S.F.



**1 RISER DETAIL**  
SCALE: 1/2" = 1'-0"

**PIPE VOLUMES:**  
(CPVC)

TOTAL PIPE FOOTAGE AND CAPACITY:  
1" = 483' (23.89 GAL)

ADD 10% FOR DROPS AND PIPE SIZE DISCREPANCIES  
TOTAL VOLUME: ±27.56 GALLONS

NFPA 13 - Table A.7.2.3 Capacity of 1 ft of pipe (Based on Actual Internal Pipe Diameter)		
Nominal Pipe Diameter (in.)	Schedule 40 Schedule 10 (gall)	CPVC
1	0.045	0.049
1 1/4	0.078	0.085
1 1/2	0.106	0.115
2	0.174	0.190
2 1/2	0.248	0.283

