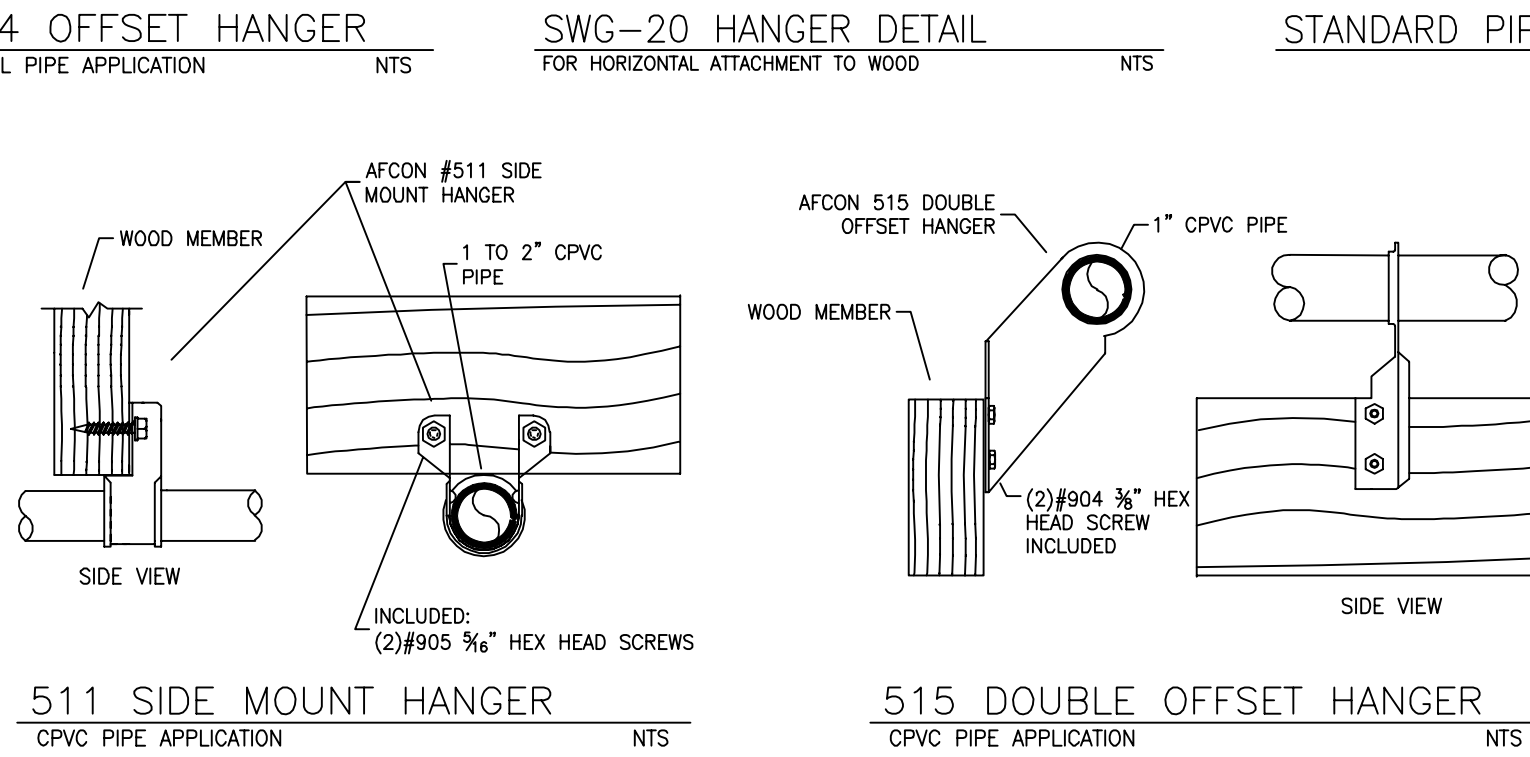
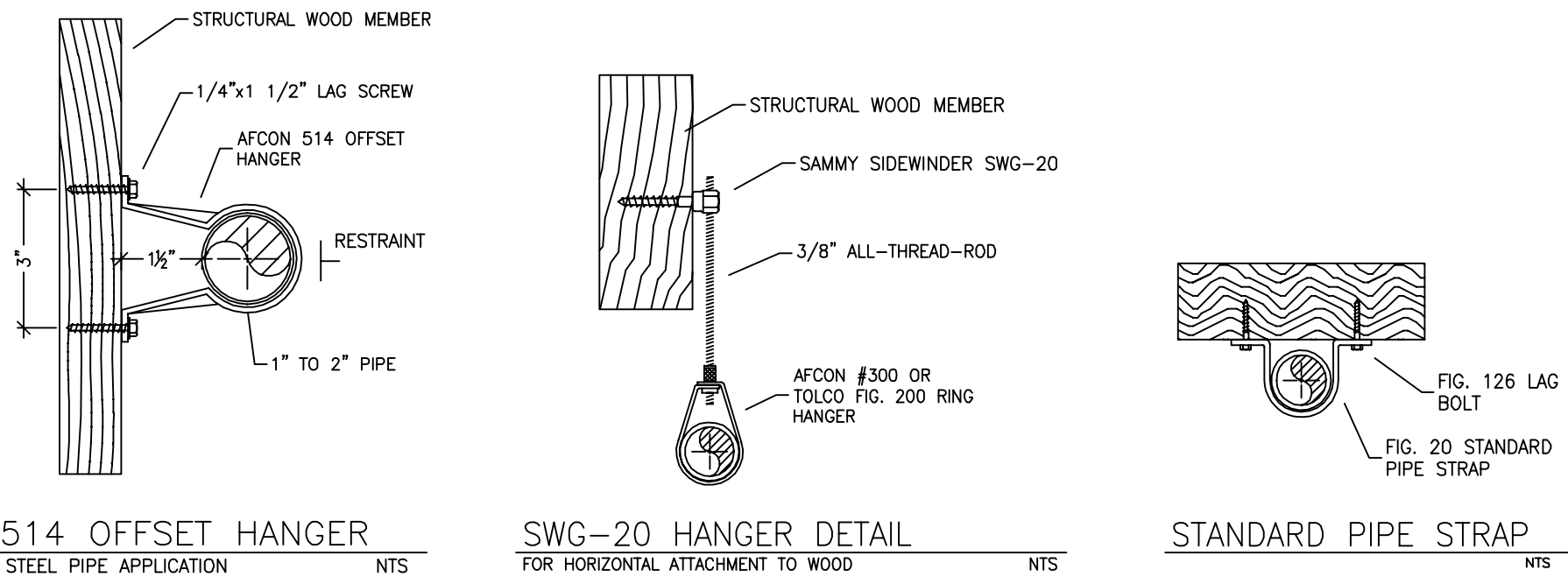
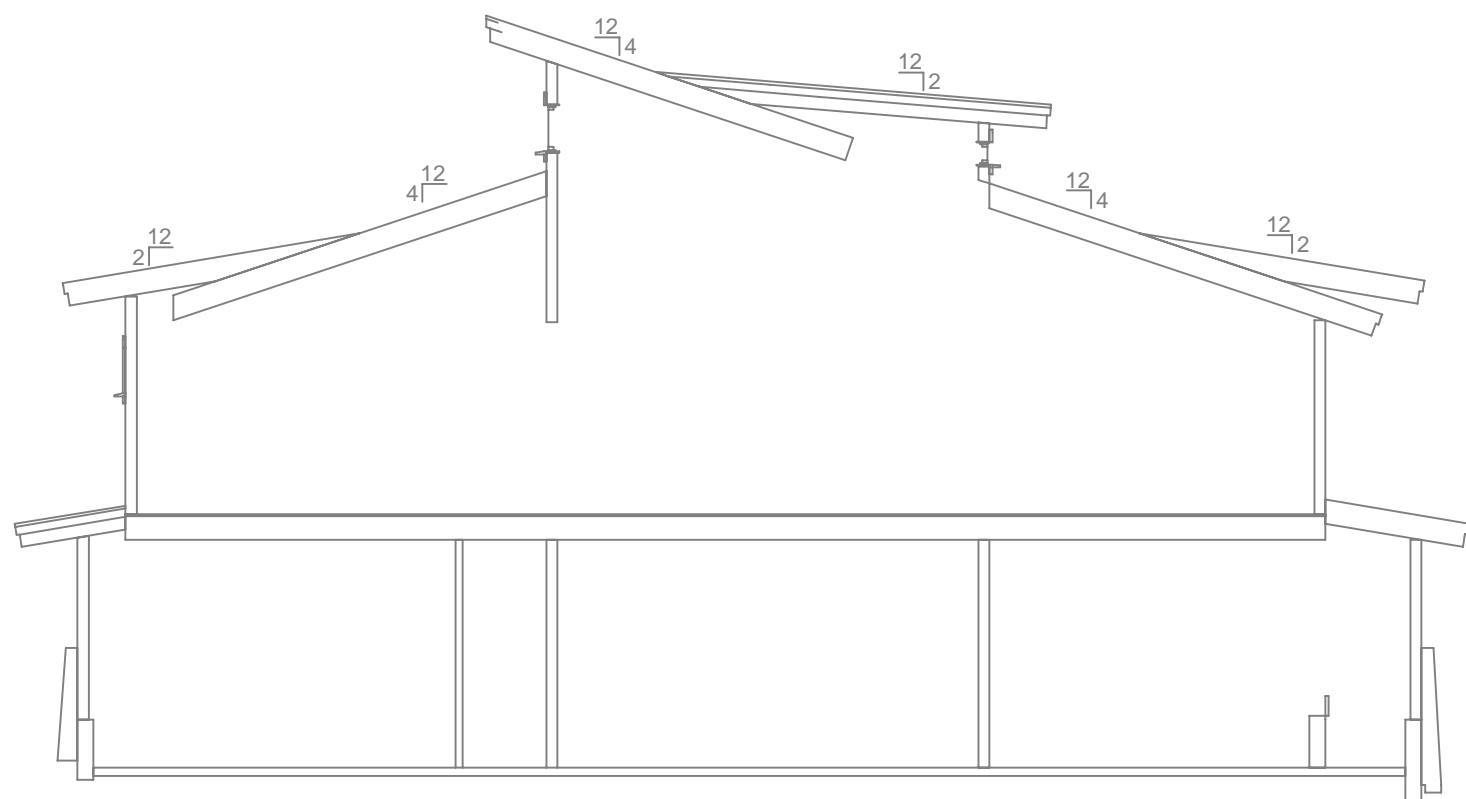


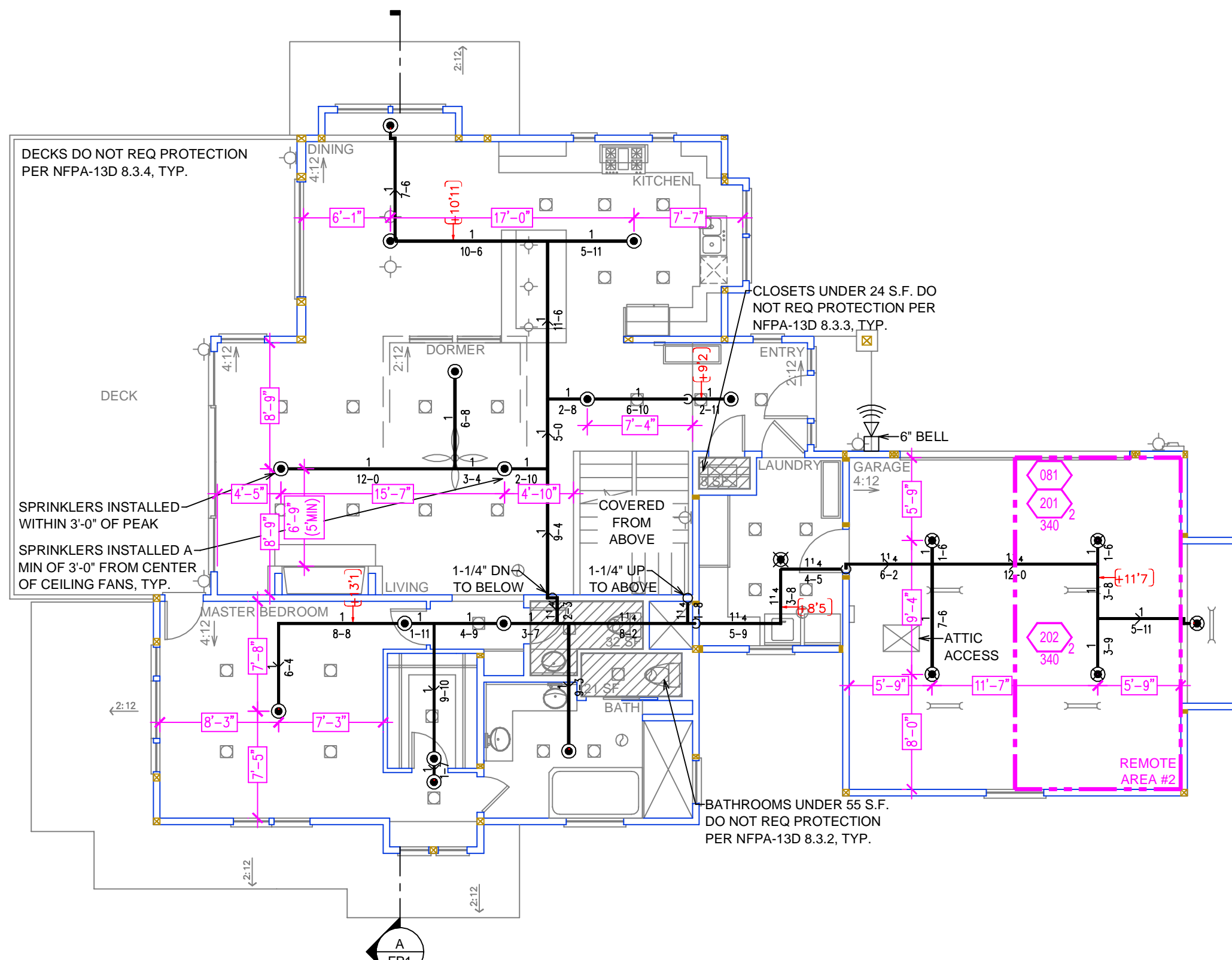
LOWER LEVEL FIRE SPRINKLER PLAN
SCALE: 1/8" = 1'-0"



HANGER DETAILS



BUILDING SECTION
SCALE: 1/8" = 1'-0"



MAIN LEVEL FIRE SPRINKLER PLAN
SCALE: 1/8" = 1'-0"

- SPRINKLER SPACING**
- A SINGLE PENDENT SPRINKLER MAY BE SPACED AT A MAXIMUM OF 18'X18' (324 SQ. FT.) OR UP TO 9' OFF A WALL (MINIMUM 8'-0" BETWEEN SPRINKLERS)
 - TWO OR MORE HEADS IN A COMPARTMENT SHALL BE SPACED AT A MAXIMUM OF 18'X18' (324 SQ. FT.) OR UP TO 9' OFF A WALL UNO. (MINIMUM 8'-0" BETWEEN SPRINKLERS)
 - SPRINKLERS SHALL BE MEASURED AT PERPENDICULAR ANGLES TO WALLS AND ALONG THE SLOPES OF CEILINGS.

THIS FIRE SPRINKLER SYSTEM UTILIZES THE NOBLE COMPANY FIREFIGHTER ELIMINATOR ANTI-FREEZE SOLUTION

NFPA 13 - Table 9.2.2.1(a) Maximum Distance Between Hangers (ft-in.)	Nominal Pipe Size (in.)															
	3/4"	1"	1 1/4"	1 1/2"	2"	2 1/2"	3"	4"	6"	8"	10"	12"	14"	16"	18"	20"
Steel Pipe except threaded	N/A	12-0	12-0	15-0	15-0	15-0	15-0	15-0	15-0	15-0	15-0	15-0	15-0	15-0	15-0	15-0
Threaded lightwall steel	N/A	12-0	12-0	15-0	15-0	15-0	15-0	15-0	N/A	N/A	N/A	N/A	N/A	N/A	N/A	N/A
Copper tube	8-0	8-0	10-0	10-0	10-0	12-0	12-0	12-0	15-0	15-0	15-0	15-0	15-0	15-0	15-0	15-0
CPVC	5-6	6-0	6-6	7-0	8-0	8-0	10-0	10-0	N/A	N/A	N/A	N/A	N/A	N/A	N/A	N/A

HEAT SOURCE:	ORDINARY TEMP. SPRINKLER		INTERMEDIATE TEMP. SPRINKLER	
	TEMP.	SPRINKLER	TEMP.	SPRINKLER
SIDE OF OPEN OR RECESSED FIRE PLACE	36"	12"	36"	12"
FRONT OF RECESSED FIRE PLACE	60"	36"	36"	12"
COAL OR WOOD BURNING STOVE	42"	12"	36"	12"
RANGE/OVEN, HOT AIR FLUES & UNINSULATED HEAT DUCT	18"	9"	36"	12"
UNINSULATED HOT WATER PIPES & 250-400 WATT LIGHTS	12"	6"	36"	12"
SIDE OF CEILING OR WALL MOUNTED HOT AIR DIFFUSERS	24"	12"	36"	12"
FRONT OF WALL MOUNTED HOT AIR DIFFUSERS	36"	18"	36"	12"
HOT WATER HEATER, FURNACE, LIGHT FIXTURE 0-250 WATT	6"	3"	36"	12"

PROJECT SUMMARY:

PROJECT NAME: **VAIDYA RESIDENCE**
 PROJECT ADDRESS: **11101 CHINA CAMP ROAD, TRUCKEE, CA 019-770-017**
 APN: **✓NEW** ☐ T.I.
 PROJECT TYPE: **✓**
 TYPE OF CONSTRUCTION: **✓**
 OCCUPANCY GROUP(S): **R3**
 OCCUPIED LEVELS: **3**
 TOTAL SPRINKLERED AREA: **4121** SQ. FT.
 NFPA CODE REQUIREMENT: ☐ NFPA 13 ☐ NFPA 13R ☒ NFPA 13D
 NUMBER OF SYSTEMS: **1**
 SYSTEM TYPE(S): ☐ WET ☒ ANTI-FREEZE ☐ DRY ☐ PREACTION
 TOTAL SPRINKLERS: **33**
 SPECIAL NOTES: SEE FIRE SPRINKLER NOTES THIS SHEET

SUBMITTAL

NO SPRINKLERS REQUIRED IN:
 BATHROOMS 55 SQ.FT. OR LESS IN AREA PER NFPA 13D SECTION 8.6.2
 CLOSETS 24 SQ.FT. OR LESS IN AREA PER NFPA 13D SECTION 8.6.3

PROJECT SQUARE FOOTAGES

LOWER LEVEL = 1481 S.F.
 MAIN LEVEL = 2510 S.F.
 ATTIC LEVEL = 130 S.F.
 TOTAL = 4121 S.F.

PIPE VOLUMES:
 (CPVC)

TOTAL PIPE FOOTAGE AND CAPACITY:
 1" = 265' (13.11 GAL)
 1-1/4" = 117' (9.28 GAL)

ADD 10% FOR DROPS AND PIPE SIZE DISCREPANCIES
 TOTAL VOLUME: ±24.62 GALLONS

NFPA 13 - Table A.7.2.3 Capacity of 1 ft of pipe (Based on Actual Internal Pipe Diameter)			
Nominal Pipe Diameter (in.)	Pipe Schedule 40	Schedule 10	CPVC (gal)
1	0.045	0.048	0.048
1 1/4	0.078	0.085	0.079
1 1/2	0.106	0.115	0.104
2	0.174	0.190	0.190
2 1/2	0.248	0.283	0.283

REMOTE AREA 1

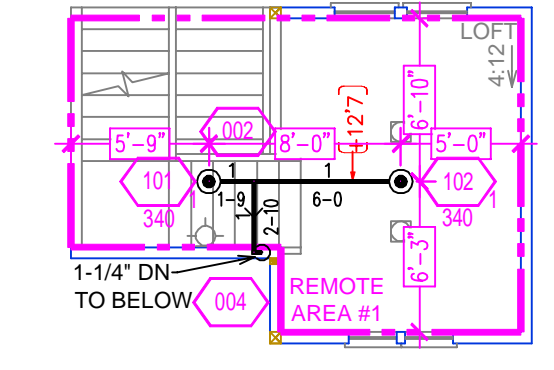
Hydraulically Calculated System

This system as shown on ☐ Fire Protection Plan
 company print no. ☐ FPI dated **4/22/2025**
 for **VAIDYA RESIDENCE**
 at **LOFT** contract no. ☐
 is designed to discharge at a rate of ☐ 0.05 gpm (L/min) per sq ft (m²) of floor area over a maximum area of ☐ sq ft (m²) when supplied with water at the rate of ☐ 30.1 gpm (L/min) at ☐ 47.7 psi (bars) at the base of the riser.
 Hose stream allowance of ☐ 5 gpm (L/min) is included in the above.
 Occupancy classification **130 LIGHT HAZARD**
 Commodity classification **N/A**
 Maximum storage height **N/A**
 Safety factor **8.7**

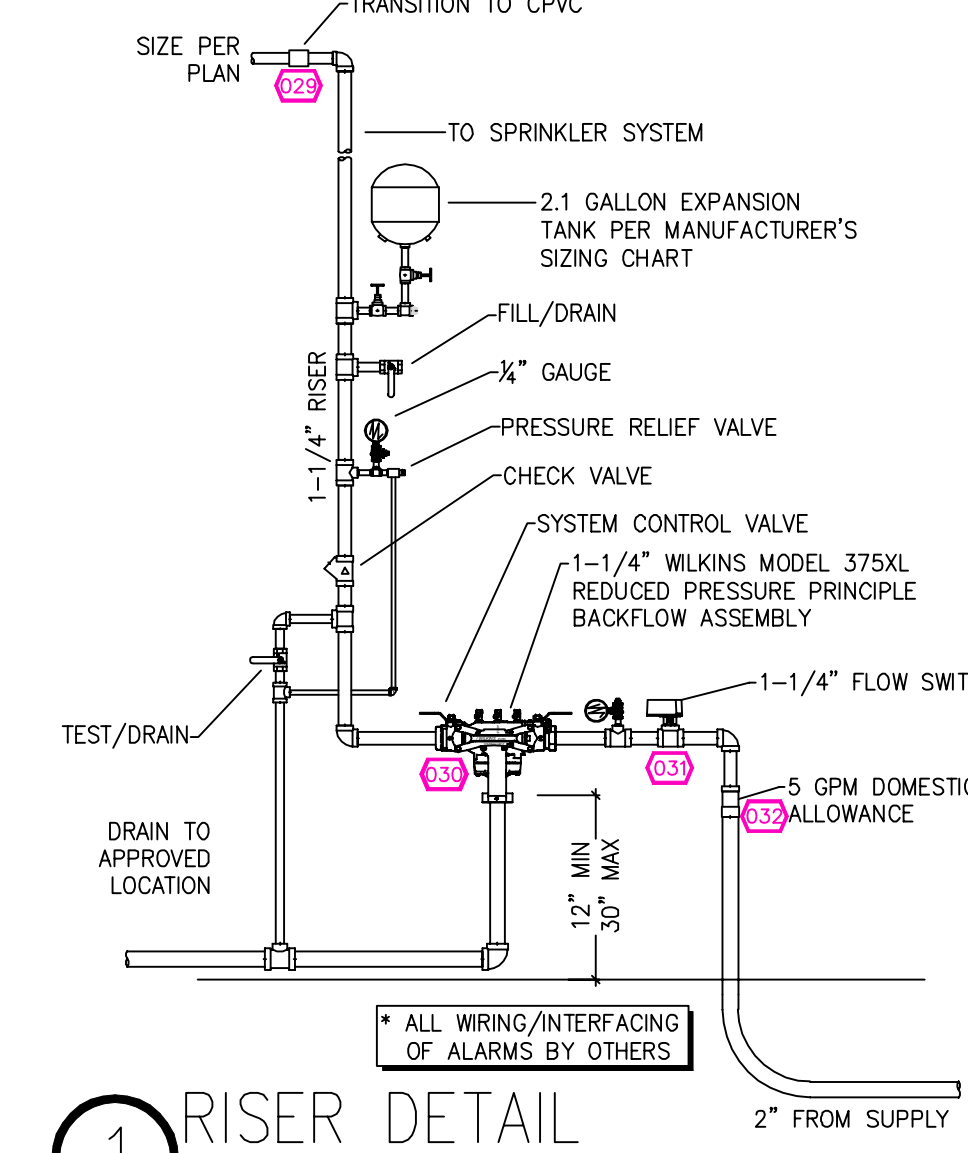
REMOTE AREA 2

Hydraulically Calculated System

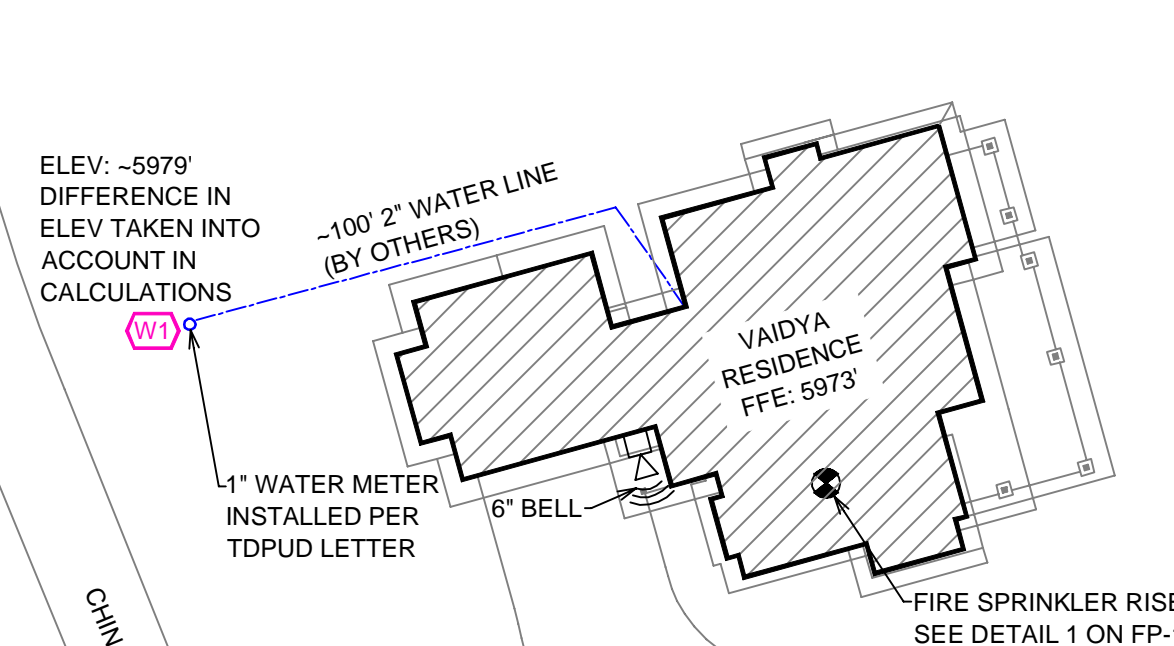
This system as shown on ☐ Fire Protection Plan
 company print no. ☐ FPI dated **4/22/2025**
 for **VAIDYA RESIDENCE**
 at **GARAGE** contract no. ☐
 is designed to discharge at a rate of ☐ 0.05 gpm (L/min) per sq ft (m²) of floor area over a maximum area of ☐ sq ft (m²) when supplied with water at the rate of ☐ 30.2 gpm (L/min) at ☐ 45.5 psi (bars) at the base of the riser.
 Hose stream allowance of ☐ 5 gpm (L/min) is included in the above.
 Occupancy classification **130 LIGHT HAZARD**
 Commodity classification **N/A**
 Maximum storage height **N/A**
 Safety factor **10.9**



LOFT FIRE SPRINKLER PLAN
SCALE: 1/8" = 1'-0"



1 RISER DETAIL
SCALE: 1/2" = 1'-0"



SITE PLAN
SCALE: 1" = 25'-0"

NO.	DATE	REVISIONS	DRAWN	CHECKED
-----	------	-----------	-------	---------

GENERAL CONTRACTOR: LARRY ORLANDO
ADDRESS: 10183 TRUCKEE AIRPORT RD
CITY: TRUCKEE, CA 96161
PHONE: 530-546-5567
CONTACT:

AUTHORITY HAVING JURISDICTION: TOWN OF TRUCKEE BUILDING DIVISION
ADDRESS: 10183 TRUCKEE AIRPORT RD
CITY: TRUCKEE, CA 96161
PHONE: 530-582-7820
CONTACT:

ARCHITECT: FIELD INSPECTIONS:
 1.
 2.
 3.
 4.

FIRE SPRINKLER NOTES:

- THE PROPOSED FIRE SPRINKLER SYSTEM IS AN ANTI-FREEZE SYSTEM AND SHALL BE DESIGNED AND INSTALLED IN ACCORDANCE WITH NFPA 13D 2019.
- THIS SPRINKLER SYSTEM IS HYDRAULICALLY CALCULATED IN ACCORDANCE WITH NFPA 13D TO PROVIDE 0.05 GPM PER SQ. FT. OVER THE MOST REMOTE AREA.
- THE NUMBER OF DESIGN SPRINKLERS SHALL INCLUDE ALL SPRINKLERS WITHIN A COMPARTMENT UP TO A MAXIMUM OF 2 SPRINKLERS.
- ALL SPRINKLER PIPING CONCEALED ABOVE CEILINGS SHALL BE CPVC PIPING UNLESS OTHERWISE NOTED.
- ALL DIMENSIONS SHOWN ARE CENTER TO CENTER U.O.N.
- ALL HANGERS SHALL BE INSTALLED IN ACCORDANCE WITH NFPA 13D AND/OR NFPA 13 REQUIREMENTS.
- HOLES THROUGH SOLID STRUCTURAL MEMBERS SHALL BE PERMITTED TO SERVE AS HANGERS FOR THE SUPPORT OF SYSTEM PIPING.
- ALL SYSTEM PIPING SHALL BE TESTED FOR LEAKAGE AT NORMAL SYSTEM OPERATING PRESSURE.
- THE OWNER SHALL BE RESPONSIBLE FOR MAINTAINING A MINIMUM TEMPERATURE OF 40° FAHRENHEIT TO PROTECT FROM FREEZING, THE SECTIONS OF THE SPRINKLER SYSTEM WHERE THERE IS NO ANTI-FREEZE IN THE PIPING (UPSTREAM OF THE RISER).

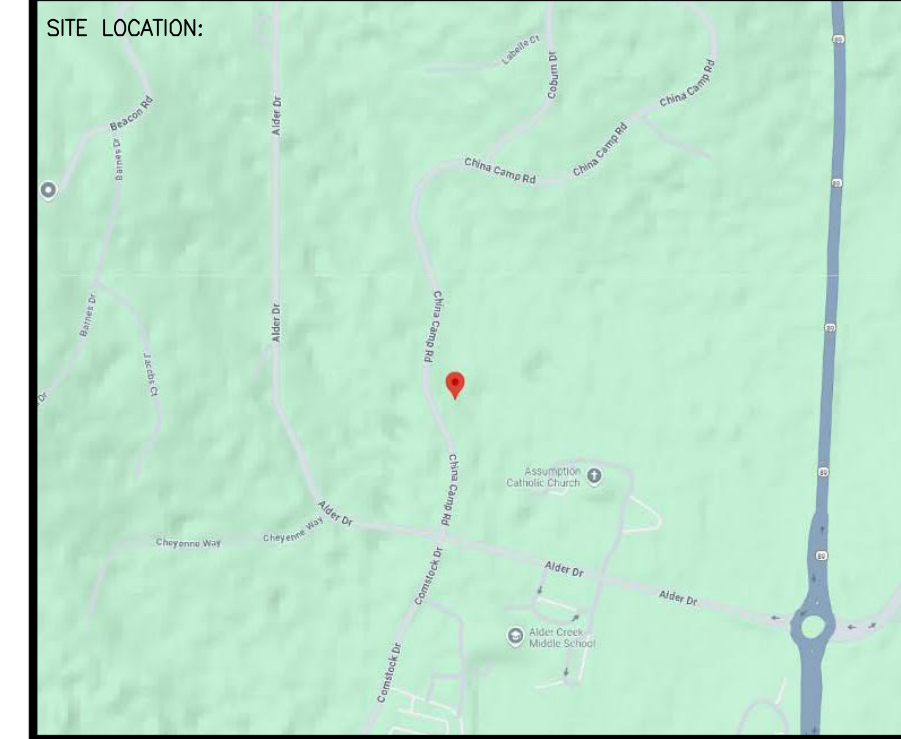
SYM	QTY	PIPE	MFG.	MODEL#	NPT	K	TEMP	FINISH	S.I.N.
28	CONCEALED	SEN/J	RC-RES	1/2"	4.9	162	WHITE	SS4464	
2	CONCEALED	SEN/J	RC-RES	1/2"	4.9	205	WHITE	SS4464	
5	SEMI-RECESS	SEN/J	FR-RES	1/2"	4.9	205	WHITE	SS4451	

33 TOTAL SPRINKLERS

FIRE SPRINKLER SYMBOLS

⊗ AUTOMATIC SPRINKLER RISER +13" ELEV. BELOW DECK OR TOS
 ⊕ EARTHQUAKE BRACING +12'-9" ELEV. ABOVE FINISHED FLOOR
 2-WAY & 4-WAY
 PIPE HANGER & TYPE DESIGNATION
 HYDRAULIC REF PT
 GRVD OR THRD CAP
 GRVD COUPLING
 ⊕ TYPICAL POINT OF CONNECTION (POC)

— CHANGE ELEVATION UP
 — CHANGE ELEVATION DN
 — INSPECTORS TEST
 — AUX DRAIN
 △ REVISION NOTATION
 △ LOCAL ALARM



PROJECT NAME: FIRE SPRINKLER PLANS FOR

VAIDYA RESIDENCE

11101 CHINA CAMP ROAD
 TRUCKEE, CA 96161

STAMP:

DRAWING TITLE: **FIRE SPRINKLER PLAN**

SCALE: 1/8" = 1'-0"
 DRAWN BY:
 BORN ON DATE: 4/23/2025
 FILE:

JOB NO.:
 DWG NO.:
 SHEET 1 OF 1