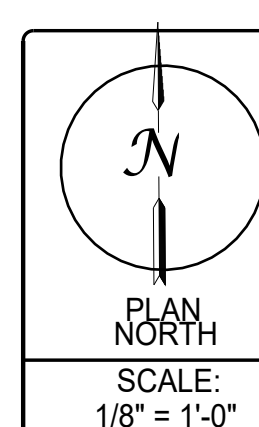
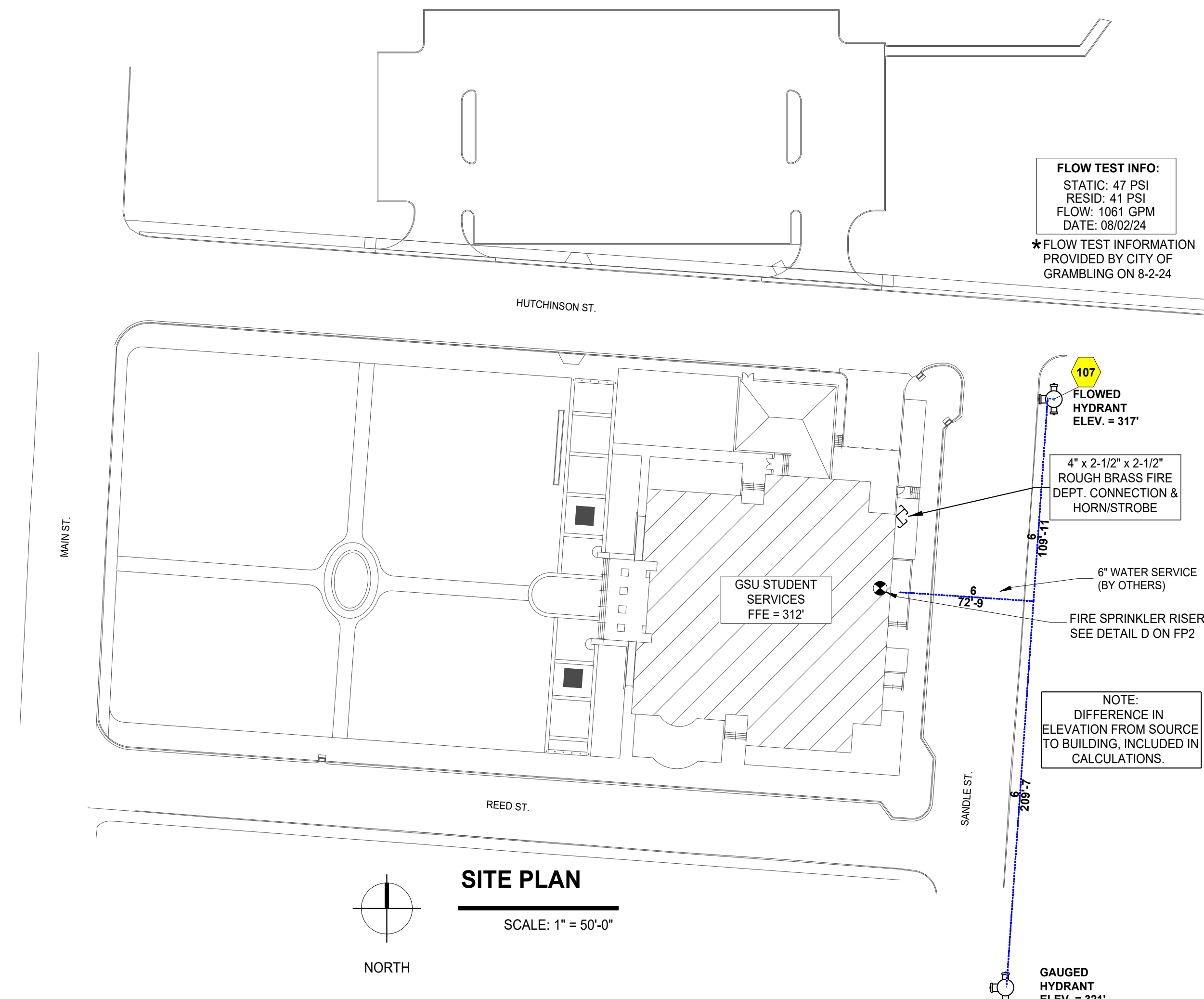
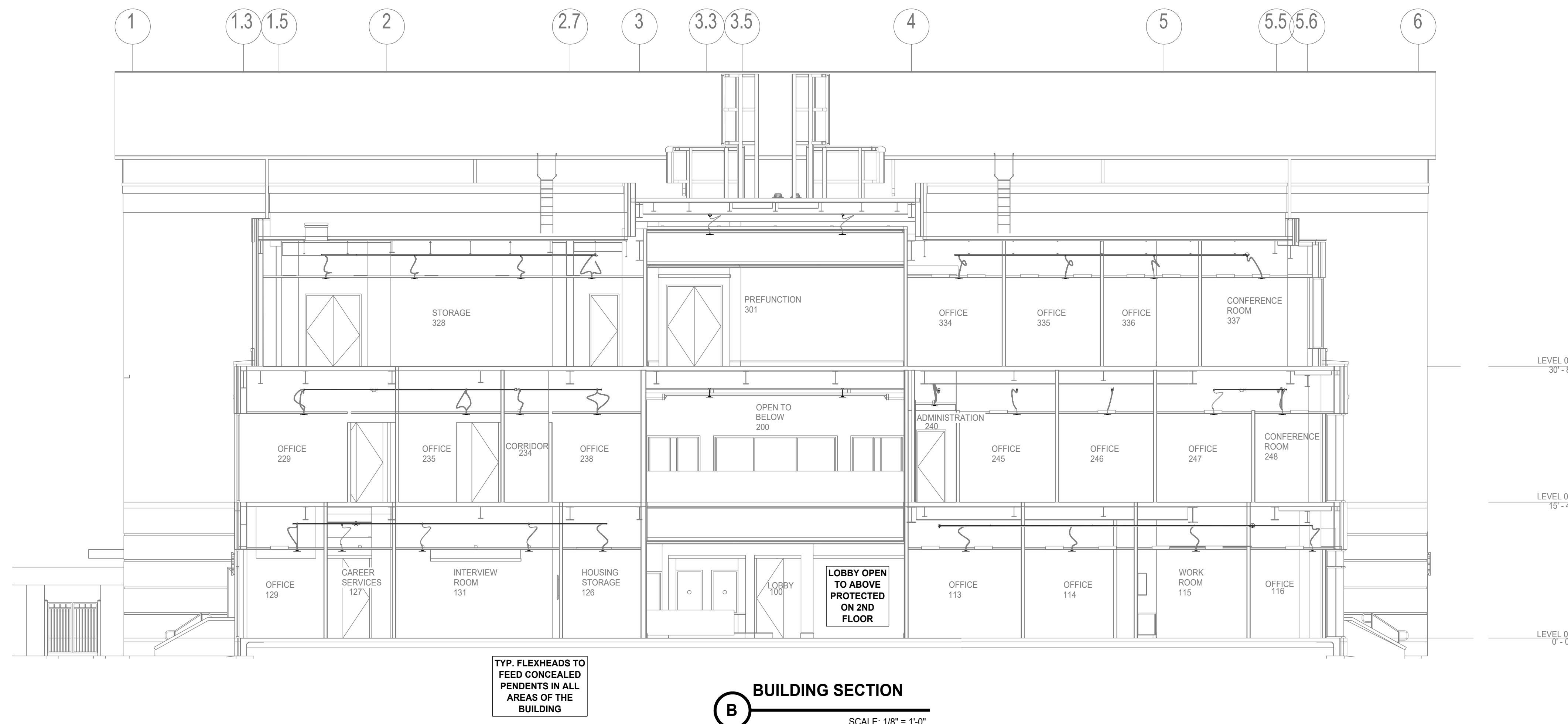
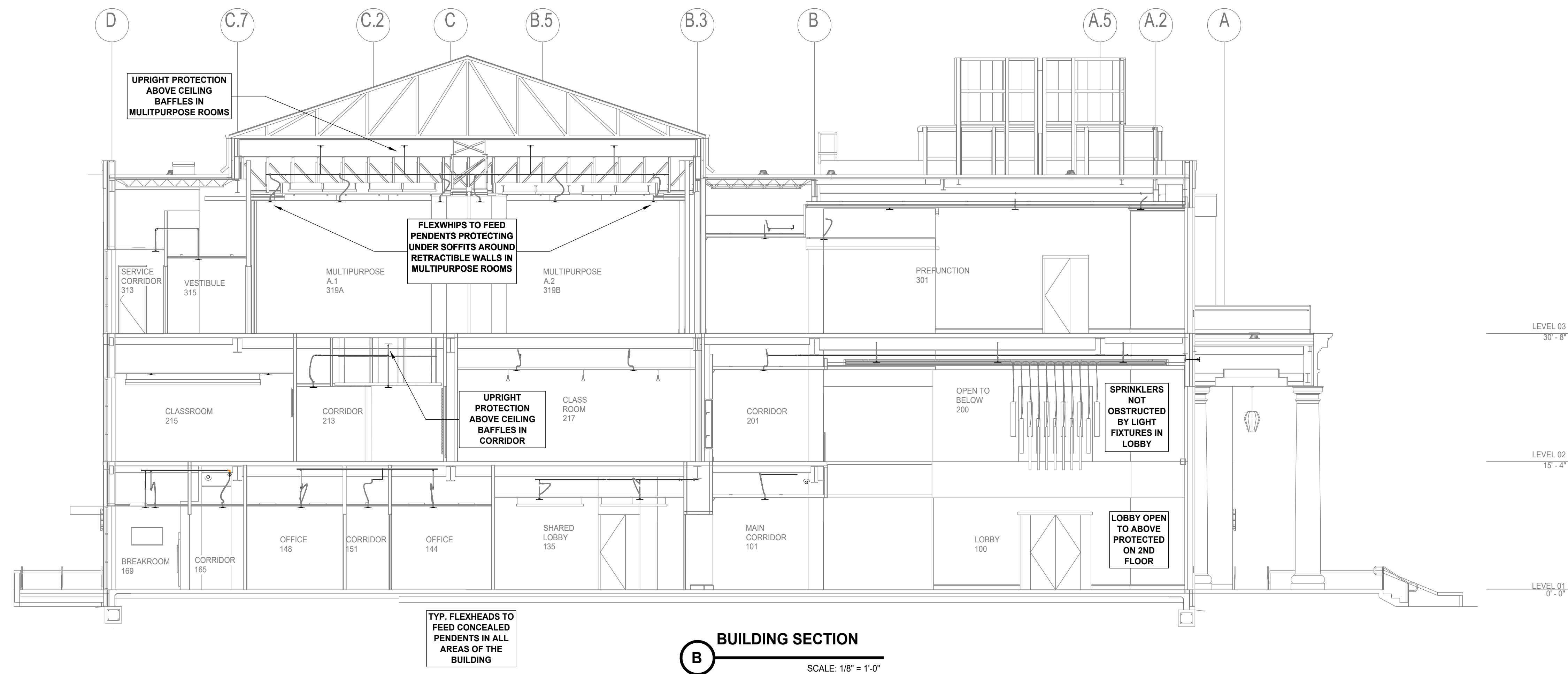
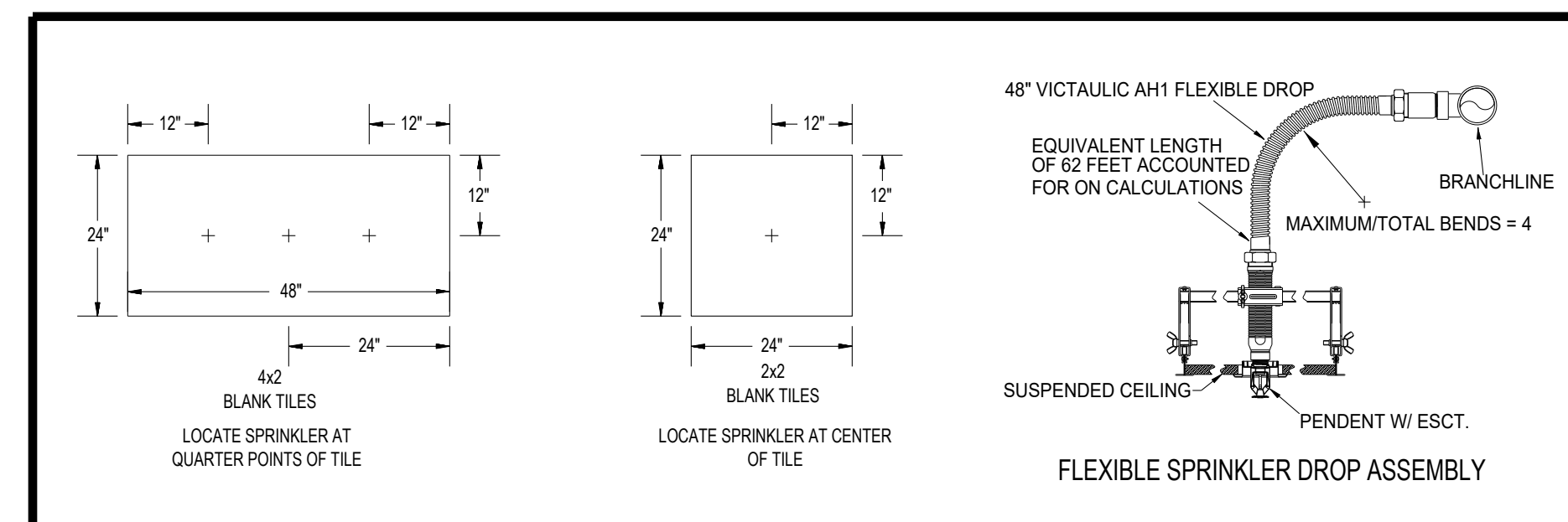
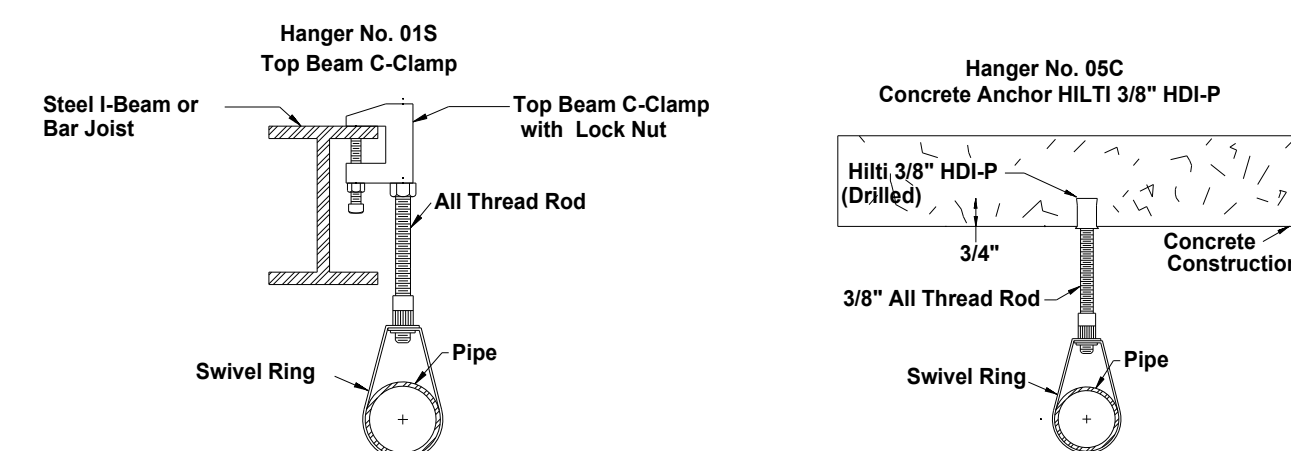


| |
|---|
| CONSTRUCTION |
| CONCRETE AND METAL DECK ON STEEL I-BEAM CONSTRUCTION TOP OF STEEL ELEVATIONS NOTED ON DRAWING |

1. INTERNATIONAL BUILDING CODE (2021)
 - 1.1 OCCUPANCY: TYPE B
 - 1.2 TYPE OF CONSTRUCTION: I-B
 - 1.3 SPRINKLERED AREAS (APPROXIMATE) - SEE ARCHITECTURAL PLANS FOR ACTUAL
MAIN FLOOR = 49,000 S.F.
 - 1.4 DESIGN & INSTALLATION STANDARDS: NFPA-13 (2019), NFPA-14 (2019)
2. SPRINKLER PIPE TYPES:
 - WET:
 - 2.1 1" PIPE TO BE SCHEDULE 40 BLACK STEEL w/ THREADED FITTINGS
 - 2.2 1-1/4" THROUGH 4" MAINS & BRANCH LINES TO BE BLK SCHEDULE 10 w/ GROOVED FITTINGS
 - 2.3 MAINS & BRANCH LINES TO BE ROLL-GROOVED BLK SCHEDULE 10
 - 2.4 2" AND LARGER TO USE GROOVED SHORT RADIUS FITTINGS
3. DESIGN CRITERIA:
 - 3.1 LIGHT HAZARD AREAS INCLUDE OFFICE/ADMINISTRATIVE, RESTROOMS, AND CORRIDORS
 - 3.2 ORDINARY HAZARD GROUP 1 AREAS INCLUDE MECHANICAL AND ELECTRICAL ROOMS
 - 3.3 REMOTE AREA REDUCTIONS HAVE BEEN TAKEN WHERE APPLICABLE PER NFPA 13 SEC. 19.3.3.2.3
4. NOTES:
 - 4.1 ALL MATERIAL TO BE NEW AND MEET U.L. STANDARDS
 - 4.2 HANGERS TO BE INSTALLED IN ACCORDANCE WITH NFPA 13 - SEE PLAN FOR HANGING REQUIREMENTS
5. SCOPE OF WORK:
 - 5.1 INSTALL A COMPLETE SINGLE ZONE WET FIRE SPRINKLER SYSTEM TO COVER ALL AREAS OF BUILDING
 - 5.2 ALL AREAS OF THE BUILDING TO BE INSTALLED AND COVERED IN ACCORDANCE WITH THE LOCAL AUTHORITY HAVING JURISDICTION AND PER NFPA 13

| MAXIMUM DISTANCE BETWEEN HANGERS | | | | | | | | | | | |
|---|------|--------|--------|------|--------|------|--------|------|------|------|------|
| NOMINAL PIPE SIZE (in.) | 1" | 1-1/4" | 1-1/2" | 2" | 2-1/2" | 3" | 3-1/2" | 4" | 5" | 6" | 8" |
| STEEL PIPE EXCEPT THREADED LIGHTWALL | 12-0 | 12-0 | 15-0 | 15-0 | 15-0 | 15-0 | 15-0 | 15-0 | 15-0 | 15-0 | 15-0 |
| THREADED LIGHTWALL STEEL PIPE | 12-0 | 12-0 | 12-0 | 12-0 | 12-0 | 12-0 | N/A | N/A | N/A | N/A | N/A |



GENERAL SYSTEM INFORMATION

- * ALL THREADED PIPING - SCHEDULE 40
- * ALL GROOVED PIPING - SCHEDULE 10
- * TOTAL AREA PROTECTED BY SYSTEM = SEE PLAN
- * DRY SYSTEM CAPACITY (IF APPLIC.) = N/A
- * OCCUPANCY CLASSIFICATION (U.N.O.) - LIGHT HAZARD
- * ALL PIPING SHALL BE READILY AVAILABLE FOR FLUSHING

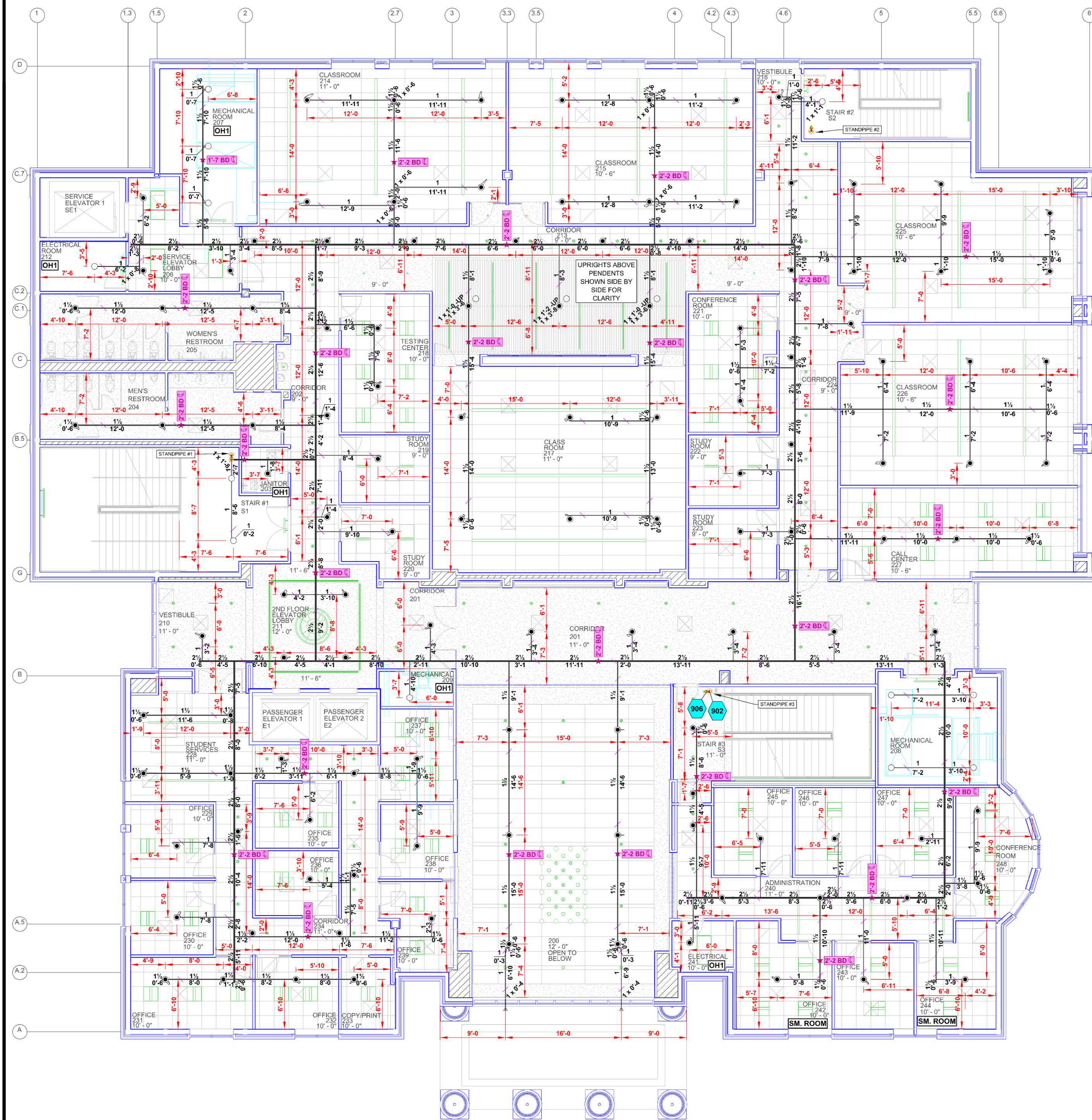
| WATER SUPPLY DATA | |
|----------------------|------------------------------|
| STATIC PRESSURE: | 47 psi |
| RESIDUAL PRESSURE: | 41 psi |
| FLOW: | 1061 gpm |
| ORIFICE SIZE: | |
| SIZE & TYPE OF MAIN: | 6" PVC |
| DATE OF FLOW TEST: | 08-02-24 |
| TIME OF FLOW TEST: | 11:00 a.m. |
| LOCATION OF TEST: | Sandlee St. Grambling, LA |

| DESIGN CRITERIA |
|--|
| SEE REMOTE AREA REPORTS ON PLAN FP-3 |

[illegible]

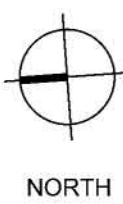
| NOTE : ALL SPRINKLERS SHALL BE QUICK RESPONSE UNLESS NOTED OTHERWISE | | | | | | | | | | | |
|--|------|---------------------|--------|-------|-----|--------|----------|--------|--------|------------|-------------|
| SPRINKLERS | | | | | | | | | | | |
| Sprinkler Legend | | | | | | | | | | | |
| SYM | QTY. | POSITION | FIN | TEMP | K | NPT | SIN | MFG. | MODEL# | ESCUTCHEON | MAX SPACING |
| 86 | 389 | Ceiling Recessed | Braze | 160°F | 5.6 | K-160 | Viking | GP-RF | | CONCEALED | 15' x 15' |
| 48 | 1 | Upright | Braze | 157°F | 5.6 | RAT14S | Reliable | PFRFB | | NA | 15' x 15' |
| 5 | 5 | Horizontal Sidewall | Chrome | 155°F | 5.6 | RAT14S | Reliable | FIFRFB | | RECESSED | 14' x 14' |
| 2 | 2 | Horizontal Sidewall | Chrome | 150°F | 5.6 | 1 | Viking | QRFC | | RECESSED | 18" x 18" |
| Total = 495 | | | | | | | | | | | |

2ND FLOOR (TOS 30'-2 AFF)

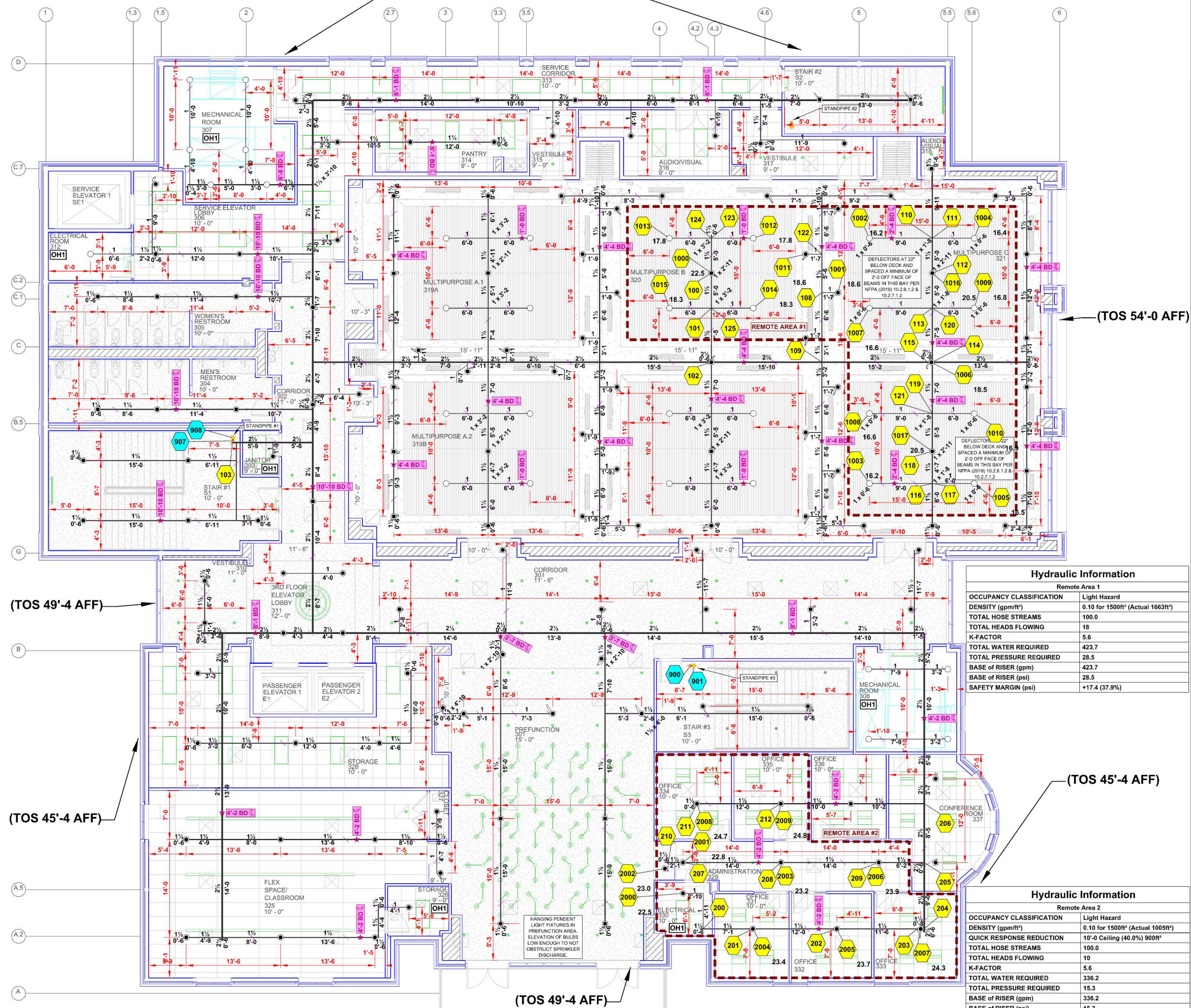


2ND FLOOR FIRE SPRINKLER PLAN

SCALE: 1/8" = 1'-0"

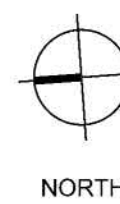


(TOS 49'-4 AFF)



3RD FLOOR FIRE SPRINKLER PLAN

SCALE: 1/8" = 1'-0"



| Hydraulic Information | |
|--------------------------------|--|
| Remote Area 1 | |
| OCCUPANCY CLASSIFICATION | Light Hazard |
| DENSITY (gpm/ft ²) | 0.10 for 1500ft ² (Actual 1663ft ²) |
| TOTAL HOSE STREAMS | 100.0 |
| TOTAL HEADS FLOWING | 19 |
| K-FACTOR | 5.6 |
| TOTAL WATER REQUIRED | 423.7 |
| TOTAL PRESSURE REQUIRED | 28.5 |
| BASE OF RISER (gpm) | 423.7 |
| BASE OF RISER (psi) | 28.5 |
| SAFETY MARGIN (psi) | +17.4 (37.9%) |

| Hydraulic Information | |
|--------------------------------|--|
| Remote Area 2 | |
| OCCUPANCY CLASSIFICATION | Light Hazard |
| DENSITY (gpm/ft ²) | 0.10 for 1500ft ² (Actual 1005ft ²) |
| QUICK RESPONSE REDUCTION | 10'-0" Ceiling (40.0%) 900ft ² |
| TOTAL HOSE STREAMS | 100.0 |
| TOTAL HEADS FLOWING | 19 |
| K-FACTOR | 5.6 |
| TOTAL WATER REQUIRED | 336.2 |
| TOTAL PRESSURE REQUIRED | 15.3 |
| BASE OF RISER (gpm) | 336.2 |
| BASE OF RISER (psi) | 15.3 |
| SAFETY MARGIN (psi) | +30.9 (66.9%) |

NOTE: ALL SPRINKLERS SHALL BE QUICK RESPONSE UNLESS NOTED OTHERWISE

SPRINKLERS ON THIS PAGE

| Sprinkler Legend | | | | | | | | | |
|------------------|-----|---------------------|--------|-------|-----|------|--------|----------|------------------|
| SYM | QTY | POSITION | FIN | TEMP | K | NPT | SN | INFO | MODEL/ESCUTOHEON |
| 262 | 1 | Connected Pendant | Brass | 160°F | 5.6 | 1/2" | RA3413 | Reliable | Q5-50 CONCEALED |
| 50 | 1 | Upright | Brass | 150°F | 5.6 | 1/2" | RA1425 | Reliable | F1FR508 N/A |
| 2 | 1 | Horizontal Sidewall | Chrome | 150°F | 5.6 | 1" | VK186 | Viking | QREC RECESSED |
| Total = 314 | | | | | | | | | |

GENERAL SYSTEM INFORMATION

- * ALL THREADED PIPING - SCHEDULE 40
- * ALL GROOVED PIPING - SCHEDULE 10
- * TOTAL AREA PROTECTED BY SYSTEM - SEE PLAN
- * DRY SYSTEM CAPACITY (IF APPLIC.) = N/A
- * OCCUPANCY CLASSIFICATION (U.N.O.) - LIGHT HAZARD
- * ALL PIPING SHALL BE READILY AVAILABLE FOR FLUSHING

WATER SUPPLY DATA

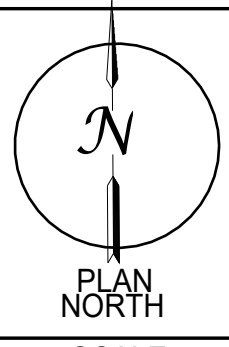
STATIC PRESSURE: 47 psi
RESIDUAL PRESSURE: 41 psi
FLOW: 1061 gpm
ORIFICE SIZE:
SIZE & TYPE OF MAIN: 6" PVC
DATE OF FLOW TEST: 08-02-24
TIME OF FLOW TEST: 11:00 a.m.
LOCATION OF TEST: Sandle St
Grambling, LA

DESIGN CRITERIA

SEE REMOTE AREA
REPORTS ON PLAN
FP-3

REVISIONS

| DATE | REVISIONS |
|------|-----------|
| | |
| | |
| | |

SCALE:
1/8" = 1'-0"