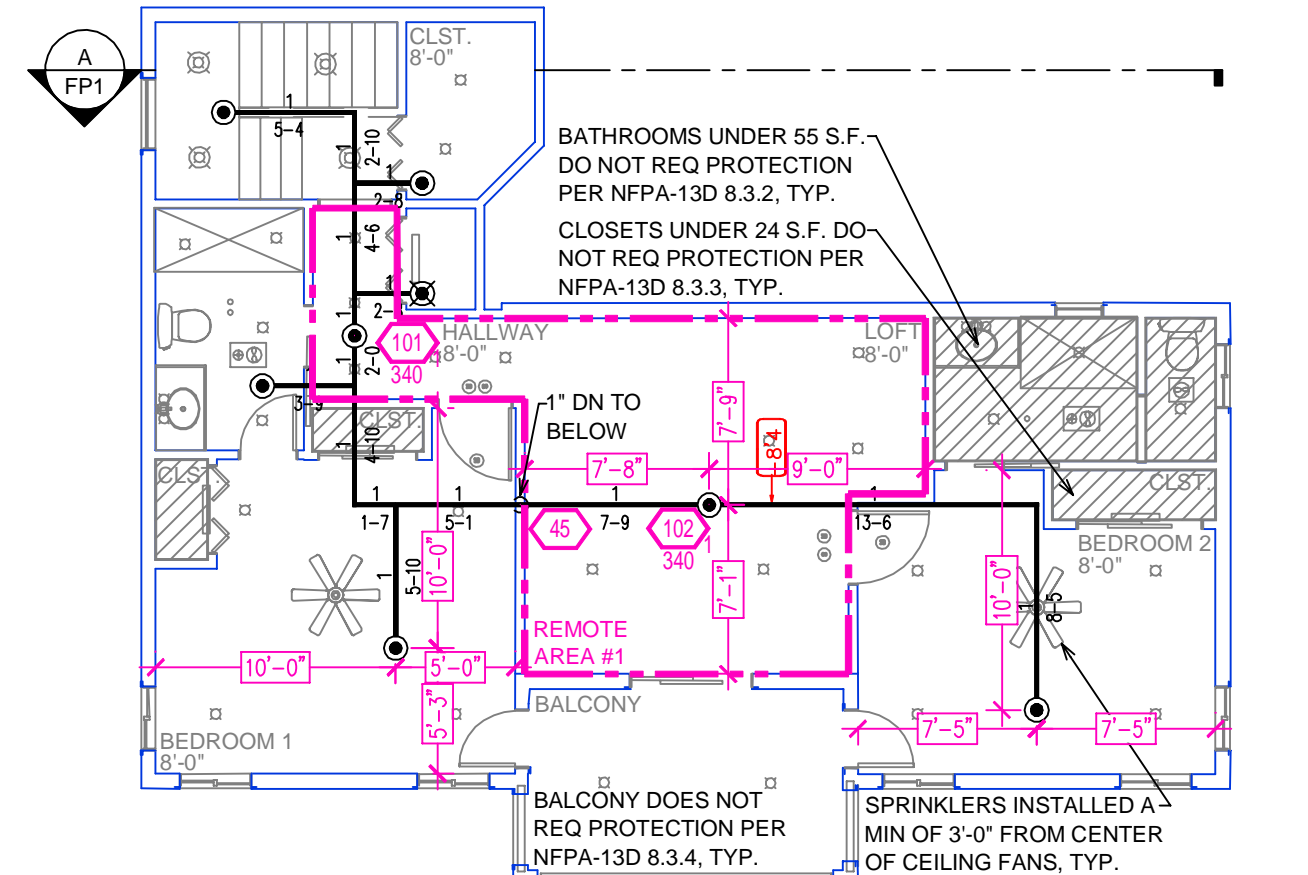


FIRST FLOOR FIRE SPRINKLER PLAN
SCALE: 1/8" = 1'-0"

REMOTE AREA 1	REMOTE AREA 2	REMOTE AREA 3
Hydraulically Calculated System This system as shown on Fire Protection Plan company print no. FP1 dated 4/16/2025 for BAUER RESIDENCE contract no. 049-320-020-000 at LOFT is designed to discharge at a rate of 0.05 gpm (L/min) per sq ft (m²) of floor area over a maximum area of NFPA 13D - 2 SPRINKLERS sq ft (m²) when supplied with water at the rate of 39.3 gpm (L/min) at 53.8 psi (bars) at the base of the riser. Hose stream allowance of 5 gpm (L/min) is included in the above. Occupancy classification 130 LIGHT HAZARD Commodity classification N/A Maximum storage height N/A Safety factor 11.3	Hydraulically Calculated System This system as shown on Fire Protection Plan company print no. FP1 dated 4/16/2025 for BAUER RESIDENCE contract no. 049-320-020-000 at MASTER BEDROOM is designed to discharge at a rate of 0.05 gpm (L/min) per sq ft (m²) of floor area over a maximum area of NFPA 13D - 2 SPRINKLERS sq ft (m²) when supplied with water at the rate of 39.3 gpm (L/min) at 56.5 psi (bars) at the base of the riser. Hose stream allowance of 5 gpm (L/min) is included in the above. Occupancy classification 130 LIGHT HAZARD Commodity classification N/A Maximum storage height N/A Safety factor 8.7	Hydraulically Calculated System This system as shown on Fire Protection Plan company print no. FP1 dated 4/16/2025 for BAUER RESIDENCE contract no. 049-320-020-000 at MASTER BATHROOM is designed to discharge at a rate of 0.05 gpm (L/min) per sq ft (m²) of floor area over a maximum area of NFPA 13D - 1 SPRINKLER sq ft (m²) when supplied with water at the rate of 26.0 gpm (L/min) at 51.4 psi (bars) at the base of the riser. Hose stream allowance of 5 gpm (L/min) is included in the above. Occupancy classification 130 LIGHT HAZARD Commodity classification N/A Maximum storage height N/A Safety factor 21.7



BUILDING SECTION
SCALE: 1/8" = 1'-0"



SECOND FLOOR FIRE SPRINKLER PLAN
SCALE: 1/8" = 1'-0"

NFPA 13 - Table 9.2.2.1(a) Maximum Distance Between Hangers (ft-in.)	1/4"	1/2"	3/4"	1"	1 1/2"	2"	3"	4"	6"	8"
Steel Pipe except threaded lightwall	N/A	12-0	12-0	15-0	15-0	15-0	15-0	15-0	15-0	15-0
Threaded lightwall steel	N/A	12-0	12-0	15-0	15-0	15-0	N/A	N/A	N/A	N/A
PPR	8-0	8-0	10-0	10-0	12-0	12-0	12-0	15-0	15-0	15-0
Copper tube	8-0	8-0	6-6	7-0	8-0	9-0	10-0	N/A	N/A	N/A
CPVC	5-6	6-0	6-6	7-0	8-0	9-0	10-0	N/A	N/A	N/A

HEAT SOURCE:	SPRINKLER HEAT ZONES:	
	ORDINARY TEMP. SPRINKLER	INTERMEDIATE TEMP. SPRINKLER
SIDE OF OPEN OR RECESSED FIRE PLACE	36"	12"
FRONT OF RECESSED FIRE PLACE	60"	36"
COAL OR WOOD BURNING STOVE	42"	12"
RANGE/OVEN, HOT AIR FLUES & UNINSULATED HEAT DUCT	18"	9"
UNINSULATED HOT WATER PIPES & 250-499 WATT LIGHTS	12"	6"
SIDE OF CEILING OR WALL MOUNTED HOT AIR DIFFUSERS	24"	12"
FRONT OF WALL MOUNTED HOT AIR DIFFUSERS	36"	18"
HOT WATER HEATER, FURNACE, LIGHT FIXTURE 0-250 WATT	6"	3"

PROJECT SUMMARY:
PROJECT NAME: BAUER RESIDENCE
PROJECT ADDRESS: 16355 HAVERN HILL CT, TRUCKEE, CA
APN: 049-320-020-000
PROJECT TYPE: ☒ NEW ☐ T.I.
TYPE OF CONSTRUCTION: V
OCCUPANCY GROUP(S): R3
OCCUPIED LEVELS: 2
TOTAL SPRINKLERED AREA: 4628 SQ. FT.
NFPA CODE REQUIREMENT: ☐ NFPA 13 ☐ NFPA 13R ☒ NFPA 13D
NUMBER OF SYSTEMS: 1
SYSTEM TYPE(S): ☐ WET ☒ ANTI-FREEZE ☐ DRY ☐ PREACTION
TOTAL SPRINKLERS: 28
SPECIAL NOTES: SEE FIRE SPRINKLER NOTES THIS SHEET

SUBMITTAL

NO SPRINKLERS REQUIRED IN:
BATHROOMS 55 SQ.FT. OR LESS IN AREA PER NFPA 13D SECTION 8.6.2
CLOSETS 24 SQ.FT. OR LESS IN AREA PER NFPA 13D SECTION 8.6.3

PROJECT SQUARE FOOTAGES

FIRST FLOOR = 3557 S.F.
SECOND FLOOR = 1071 S.F.

SPRINKLER SPACING

- A SINGLE PENDENT SPRINKLER MAY BE SPACED AT A MAXIMUM OF 20'X20'(400SQ. FT.) OR UP TO 10' OFF A WALL.(MINIMUM 8'-0" BETWEEN SPRINKLERS)
- TWO OR MORE HEADS IN A COMPARTMENT SHALL BE SPACED AT A MAXIMUM OF 18'X18'(324SQ. FT.) OR UP TO 9' OFF A WALL UNO. (MINIMUM 8'-0" BETWEEN SPRINKLERS)
- SPRINKLERS SHALL BE MEASURED AT PERPENDICULAR ANGLES TO WALLS AND ALONG THE SLOPES OF CEILINGS.

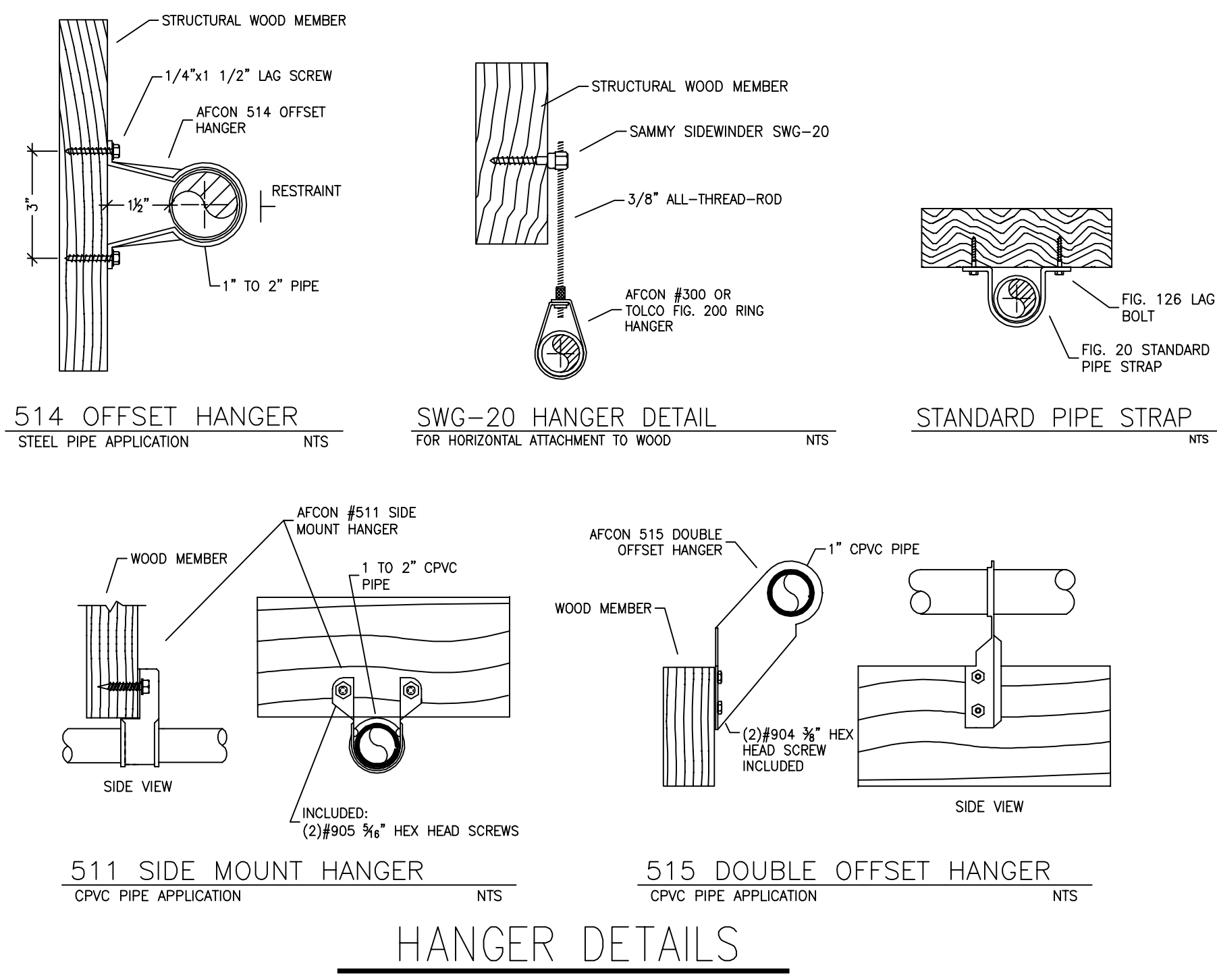
THIS FIRE SPRINKLER SYSTEM UTILIZES THE NOBLE COMPANY FIREFIGHTER ELIMINATOR ANTI-FREEZE SOLUTION

PIPE VOLUMES:

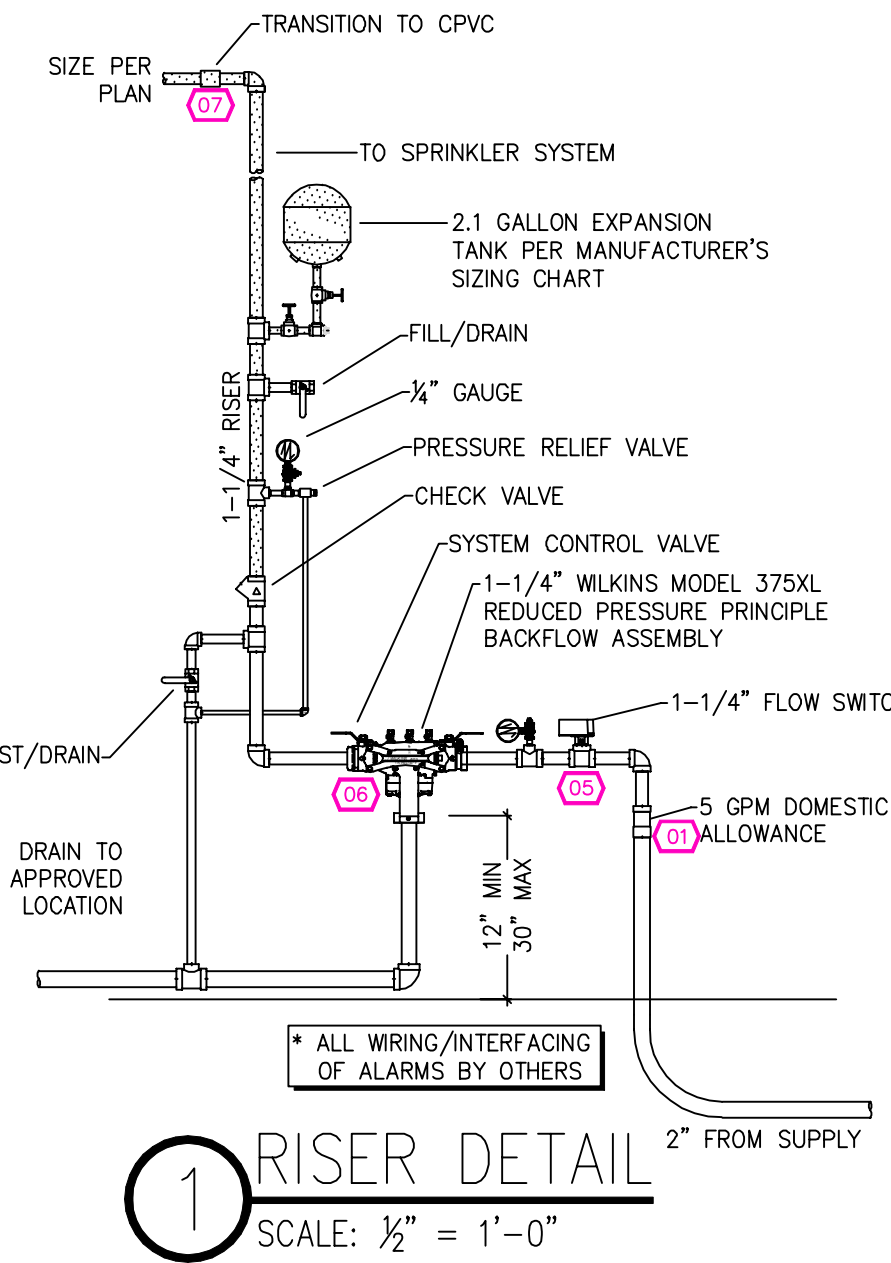
(CPVC)
TOTAL PIPE FOOTAGE AND CAPACITY:
1" = 238' (11.77 GAL)
1-1/4" = 119' (9.43 GAL)

ADD 10% FOR DROPS AND PIPE SIZE DISCREPANCIES
TOTAL VOLUME: ±23.32GALLONS

NFPA 13 - Table A.7.2.3 Capacity of 1 ft of pipe (Based on Actual Internal Pipe Diameter)	Pipe Schedule 40	Schedule 10	CPVC
Nominal Pipe Diameter (in.)	(gal)	(gal)	(gal)
1	0.045	0.049	0.049
1 1/4	0.078	0.085	0.079
1 1/2	0.106	0.115	0.104
2	0.174	0.190	0.174
2 1/2	0.248	0.283	0.248



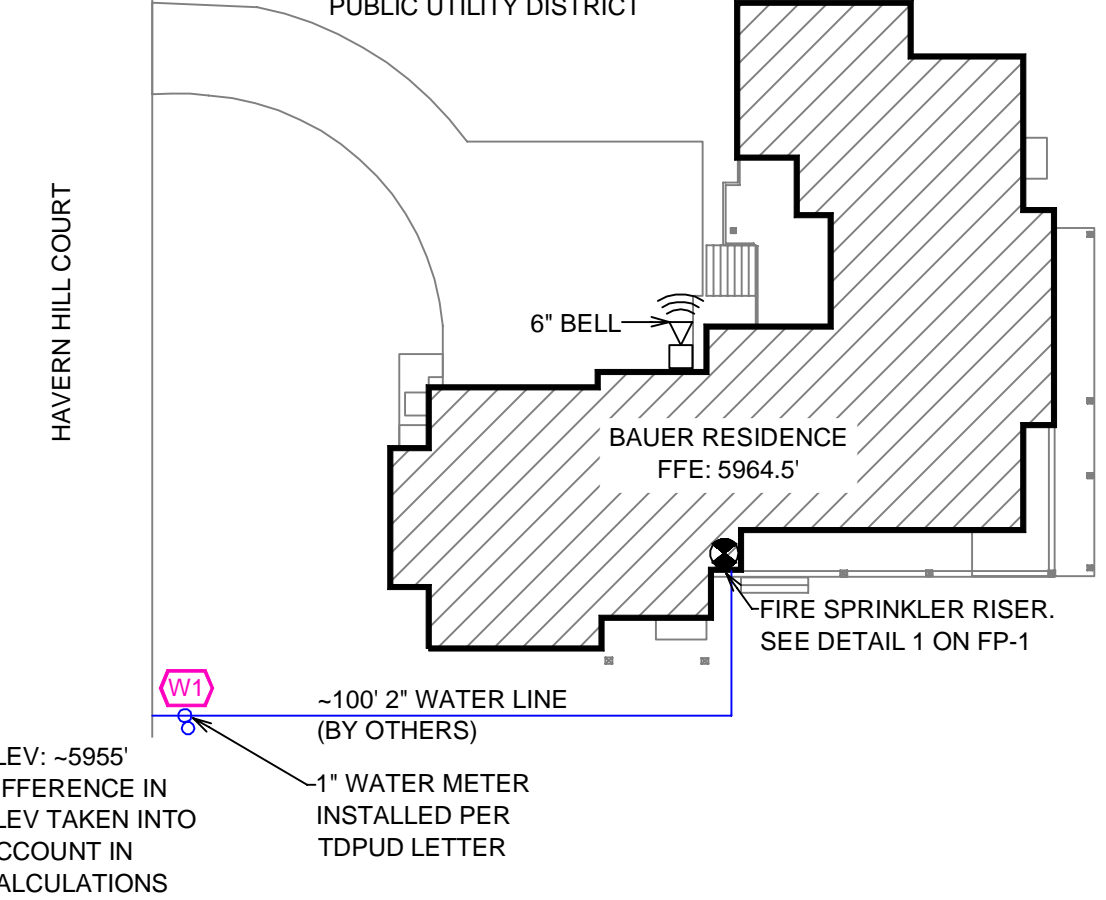
HANGER DETAILS



1 RISER DETAIL
SCALE: 1/2" = 1'-0"

FLOW TEST INFO:
STATIC: 80 PSI
RESID: 610 PSI
FLOW: 45 GPM
DATE: 12/1/2024

*FLOW TEST INFORMATION PROVIDED BY TRUCKEE DONNER PUBLIC UTILITY DISTRICT



SITE PLAN
SCALE: 1" = 25'-0"

GENERAL CONTRACTOR: AUTHORITY HAVING JURISDICTION:
TOWN OF TRUCKEE BUILDING DIVISION
ADDRESS: 10183 TRUCKEE AIRPORT RD
CITY: TRUCKEE, CA 96161
PHONE: 530-582-7820
CONTACT: CONTACT:
ARCHITECT: FIELD INSPECTIONS:
1.
2.
3.
4.
ADDRESS:
CITY:
PHONE:

FIRE SPRINKLER NOTES:
1. THE PROPOSED FIRE SPRINKLER SYSTEM IS AN ANTI-FREEZE SYSTEM AND SHALL BE DESIGNED AND INSTALLED IN ACCORDANCE WITH NFPA 13D 2019
2. THIS SPRINKLER SYSTEM IS HYDRAULICALLY CALCULATED IN ACCORDANCE WITH NFPA 13D TO PROVIDE 0.05 GPM PER SQ. FT. OVER THE MOST REMOTE AREA.
3. THE NUMBER OF DESIGN SPRINKLERS SHALL INCLUDE ALL SPRINKLERS WITHIN A COMPARTMENT UP TO A MAXIMUM OF 2 SPRINKLERS.
4. ALL SPRINKLER PIPING CONCEALED ABOVE CEILINGS SHALL BE CPVC PIPING UNLESS OTHERWISE NOTED.
5. ALL DIMENSIONS SHOWN ARE CENTER TO CENTER U.O.N.
6. ALL HANGERS SHALL BE INSTALLED IN ACCORDANCE WITH NFPA 13D AND/OR NFPA 13 REQUIREMENTS.
7. HOLES THROUGH SOLID STRUCTURAL MEMBERS SHALL BE PERMITTED TO SERVE AS HANGERS FOR THE SUPPORT OF SYSTEM PIPING.
8. ALL SYSTEM PIPING SHALL BE TESTED FOR LEAKAGE AT NORMAL SYSTEM OPERATING PRESSURE.
9. THE OWNER SHALL BE RESPONSIBLE FOR MAINTAINING A MINIMUM TEMPERATURE OF 40° FAHRENHEIT TO PROTECT FROM FREEZING, THE SECTIONS OF THE SPRINKLER SYSTEM WHERE THERE IS NO ANTI-FREEZE IN THE PIPING (UPSTREAM OF THE RISER).

SPRINKLER HEAD LEGEND

SYM	QTY	PIPE	MFG.	MODEL#	NPT	K	TEMP	FINISH	S.I.N.
⊗	20	CONCEALED	SENJU	RC-RES	1/2"	4.9	162	WHITE	SS4464
⊗	2	CONCEALED	SENJU	RC-RES	1/2"	4.9	205	WHITE	SS4464
⊗	6	SEMI-RECESS	SENJU	FR-RES	1/2"	4.9	205	WHITE	SS4461

28 TOTAL SPRINKLERS ON THIS SHEET

FIRE SPRINKLER SYMBOLS

- ⊗ AUTOMATIC SPRINKLER RISER +13" ELEV. BELOW DECK OR TOS
- ⊕ EARTHQUAKE BRACING +12'-9" ELEV. ABOVE FINISHED FLOOR
- 2-WAY & 4-WAY
- PIPE HANGER & TYPE DESIGNATION
- HYDRAULIC REF PT
- GRV OR THRD CAP
- GRV COUPLING
- TYPICAL POINT OF CONNECTION (POC)
- CHANGE ELEVATION UP
- CHANGE ELEVATION DN
- INSPECTORS TEST
- AUX DRAIN
- REVISION NOTATION
- LOCAL ALARM



PROJECT NAME: FIRE SPRINKLER PLANS FOR
BAUER RESIDENCE
16355 HAVERN HILL CT
TRUCKEE, CA 96161

STAMP:

DRAWING TITLE:

FIRE SPRINKLER PLAN

SCALE: 1/8" = 1'-0"
JOB NO.:
DRAWN BY: DWG NO.:
BORN ON DATE: 4/16/2025
FILE: **FP-1**
SHEET 1 OF 1