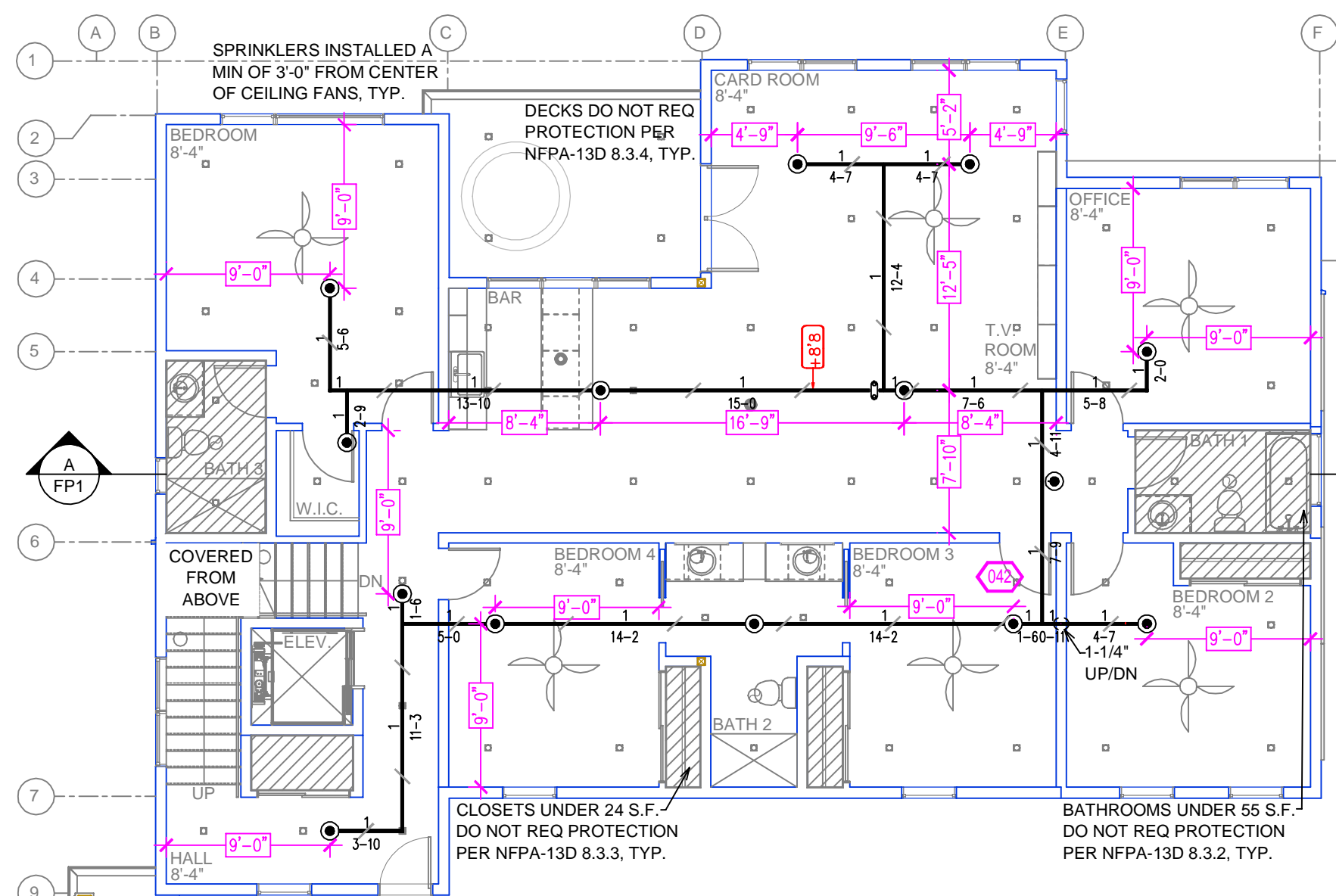
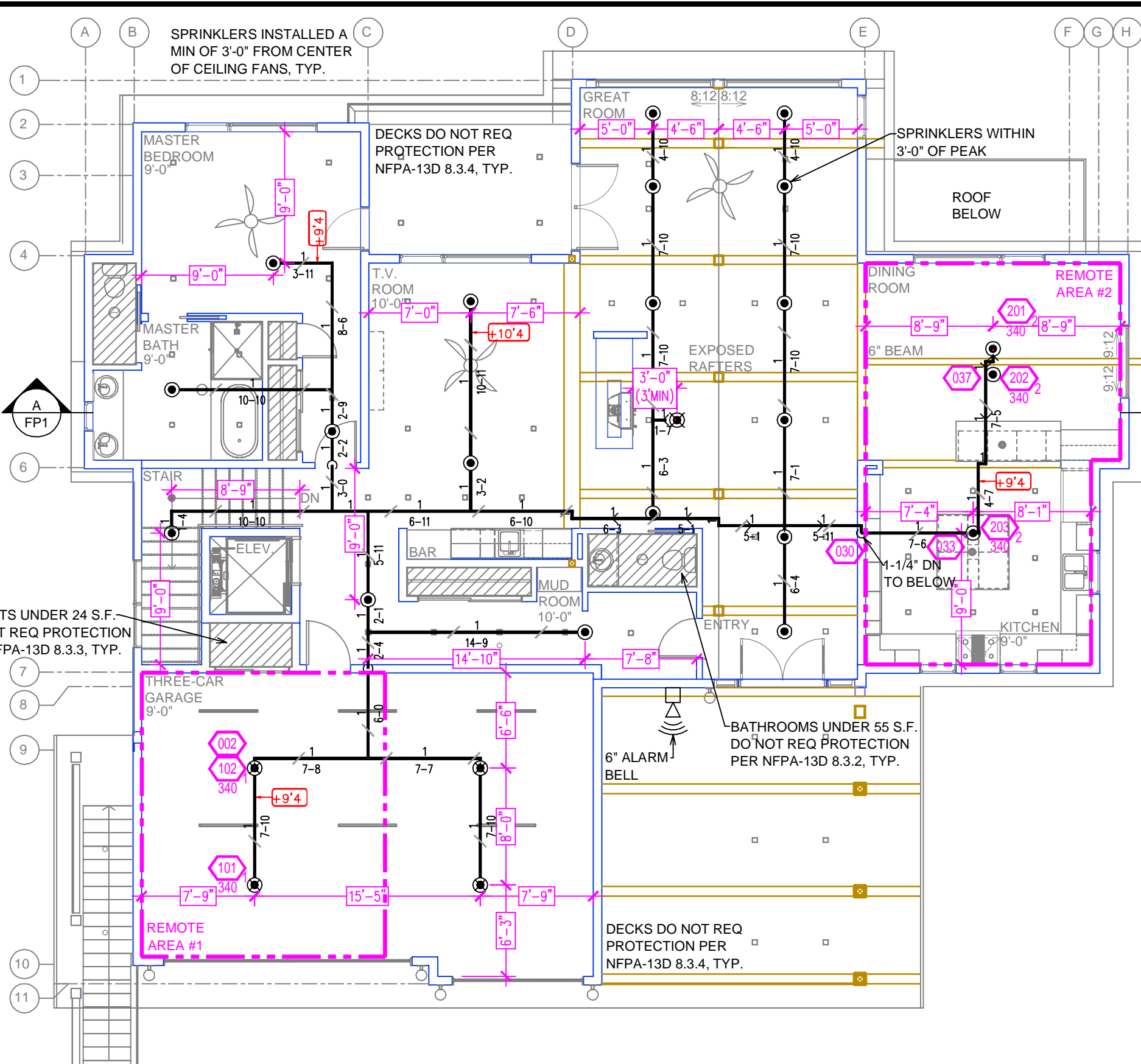
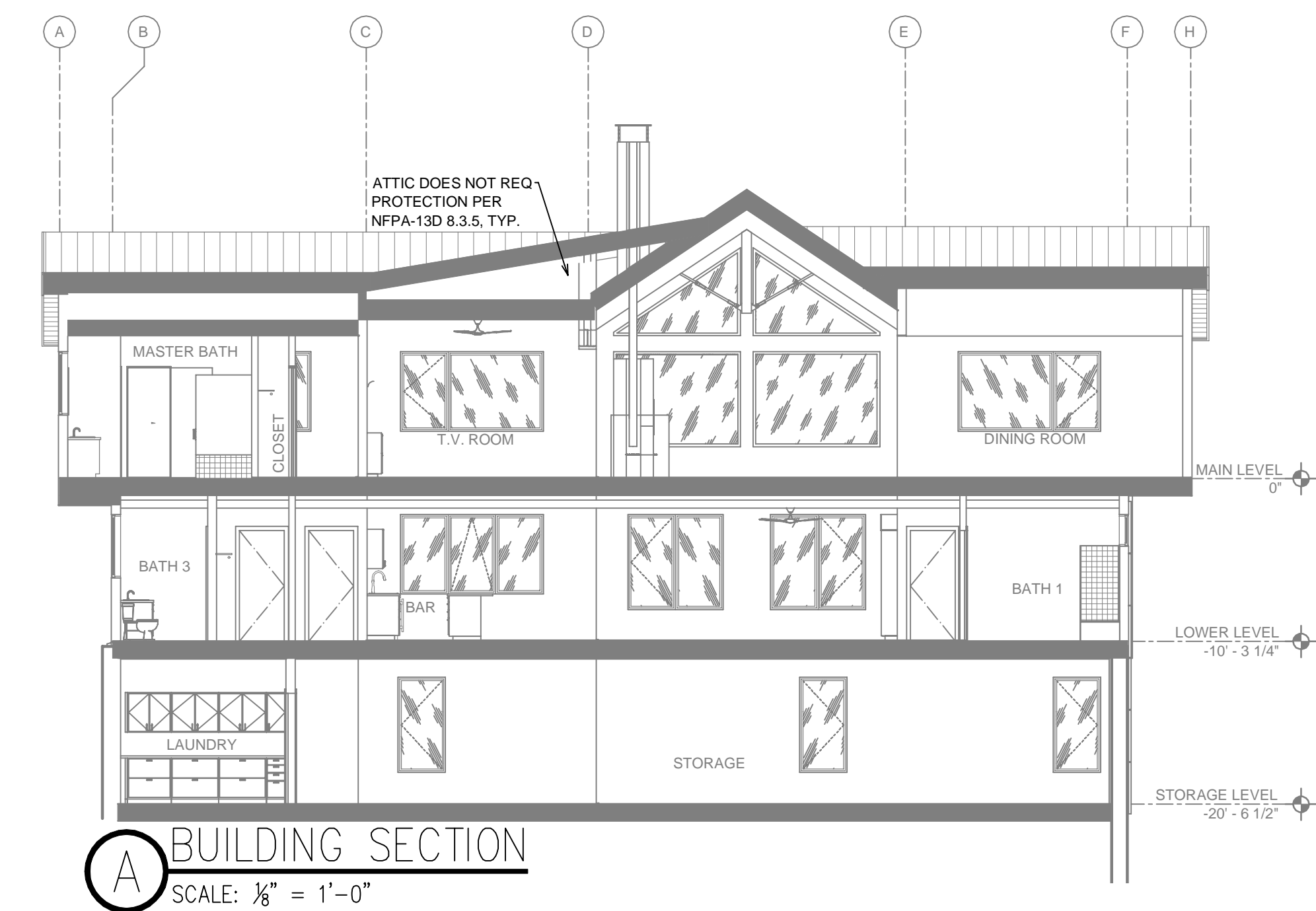


STORAGE LEVEL FIRE SPRINKLER PLAN
SCALE: 1/8" = 1'-0"



LOWER LEVEL FIRE SPRINKLER PLAN
SCALE: 1/8" = 1'-0"



MAIN LEVEL FIRE SPRINKLER PLAN
SCALE: 1/8" = 1'-0"

REMOTE AREA 1		REMOTE AREA 2	
Hydraulically Calculated System		Hydraulically Calculated System	
This system as shown on Fire Protection Plan		This system as shown on Fire Protection Plan	
company print no. 2/24/2025		company print no. 2/24/2025	
for MAMMOTH LAKES RESIDENCE		for MAMMOTH LAKES RESIDENCE	
at GARAGE		at DINING ROOM/KITCHEN	
contract no. 2/24/2025		contract no. 2/24/2025	
is designed to discharge at a rate of 0.05 gpm		is designed to discharge at a rate of 0.05 gpm	
(L/min) per sq ft (m²) of floor area over a maximum area of		(L/min) per sq ft (m²) of floor area over a maximum area of	
NFPA 13D - 2 SPRINKLERS sq ft (m²) when supplied		NFPA 13D - 3 SPRINKLERS sq ft (m²) when supplied	
with water at the rate of 39.3 gpm (L/min)		with water at the rate of 60.9 gpm (L/min)	
at 68.4 psi (bars) at the base of the riser.		at 64.5 psi (bars) at the base of the riser.	
Hose stream allowance of 5 gpm (L/min)		Hose stream allowance of 5 gpm (L/min)	
is included in the above.		is included in the above.	
Occupancy classification		Occupancy classification	
Commodity classification		Commodity classification	
Maximum storage height		Maximum storage height	
Safety factor		Safety factor	
130 LIGHT HAZARD		130 LIGHT HAZARD	
N/A		N/A	
N/A		N/A	
6.6		10.5	

SUBMITTAL

SPRINKLER HEAT ZONES:		
HEAT SOURCE:	ORDINARY TEMP SPRINKLER	INTERMEDIATE TEMP SPRINKLER
SIDE OF OPEN OR RECESSED FIRE PLACE	36"	12"
FRONT OF RECESSED FIRE PLACE	60"	36"
COAL OR WOOD BURNING STOVE	42"	12"
RANGE/OVEN, HOT AIR FLUES & UNINSULATED HEAT DUCT	18"	9"
UNINSULATED HOT WATER PIPES & 250-400 WATT LIGHTS	12"	6"
SIDE OF CEILING OR WALL MOUNTED HOT AIR DIFFUSERS	24"	12"
FRONT OF WALL MOUNTED HOT AIR DIFFUSERS	36"	18"
HOT WATER HEATER, FURNACE, LIGHT FIXTURE 0-250 WATT	6"	3"

PROJECT SUMMARY:	
PROJECT NAME:	MAMMOTH LAKES RESIDENCE
PROJECT ADDRESS:	205 JUNIPER RD, MAMMOTH LAKES, CA
APN:	032-150-012-000
PROJECT TYPE:	<input checked="" type="checkbox"/> NEW <input type="checkbox"/> T.I.
TYPE OF CONSTRUCTION:	V
OCCUPANCY GROUP(S):	R3
OCCUPIED LEVELS:	3
TOTAL SPRINKLERED AREA:	6465 SQ. FT.
NFPA CODE REQUIREMENT:	<input type="checkbox"/> NFPA 13 <input type="checkbox"/> NFPA 13R <input checked="" type="checkbox"/> NFPA 13D
NUMBER OF SYSTEMS:	1
SYSTEM TYPE(S):	<input type="checkbox"/> WET <input checked="" type="checkbox"/> ANTI-FREEZE <input type="checkbox"/> DRY <input type="checkbox"/> PREACTION
TOTAL SPRINKLERS:	54
SPECIAL NOTES:	SEE FIRE SPRINKLER NOTES THIS SHEET

SPRINKLER SPACING

- A SINGLE PENDENT SPRINKLER MAY BE SPACED AT A MAXIMUM OF 18'X18' (324SQ. FT.) OR UP TO 9' OFF A WALL (MINIMUM 8'-0" BETWEEN SPRINKLERS)
- TWO OR MORE HEADS IN A COMPARTMENT SHALL BE SPACED AT A MAXIMUM OF 18'X18' (324SQ. FT.) OR UP TO 9' OFF A WALL (MINIMUM 8'-0" BETWEEN SPRINKLERS)
- SPRINKLERS SHALL BE MEASURED AT PERPENDICULAR ANGLES TO WALLS AND ALONG THE SLOPES OF CEILINGS.

THIS FIRE SPRINKLER SYSTEM UTILIZES THE NOBLE COMPANY FIREFIGHTER ELIMINATOR ANTI-FREEZE SOLUTION

NFPA 13 - Table 9.2.2.1(a) Maximum Distance Between Hangers (ft.-in.)												
Nominal Pipe Size (in.)												
	3/8	1/2	3/4	1	1 1/2	2	2 1/2	3	4	6	8	
Steel Pipe except threaded	N/A	12-0	12-0	15-0	15-0	15-0	15-0	15-0	15-0	15-0	15-0	
Threaded lightweight steel pipe	N/A	12-0	12-0	15-0	15-0	15-0	15-0	15-0	N/A	N/A	N/A	
Copper tube	8-0	8-0	10-0	10-0	12-0	12-0	12-0	15-0	15-0	15-0	15-0	
CPVC	5-6	6-0	6-6	7-0	8-0	8-0	10-0	10-0	N/A	N/A	N/A	

PIPE VOLUMES:
(CPVC)

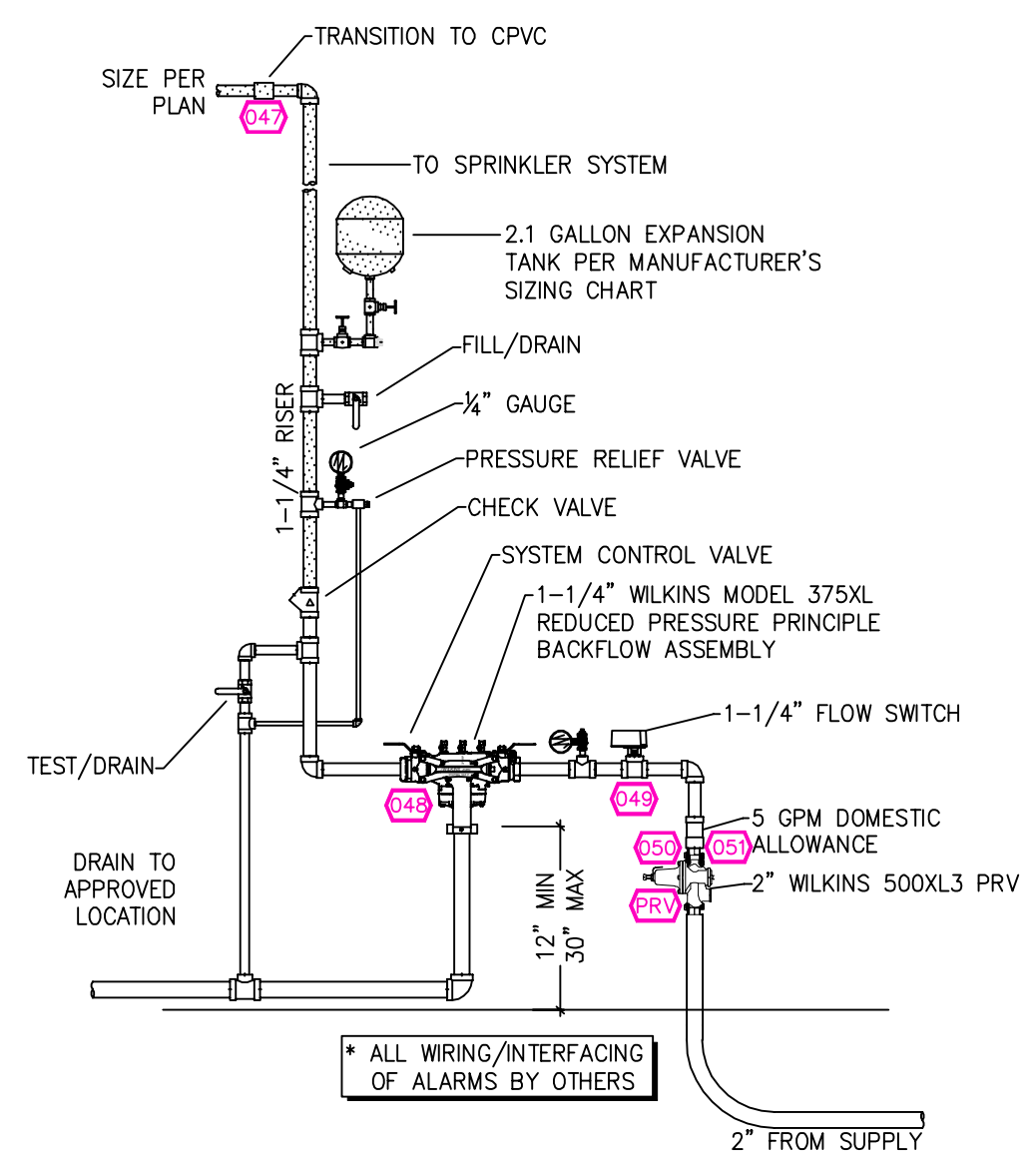
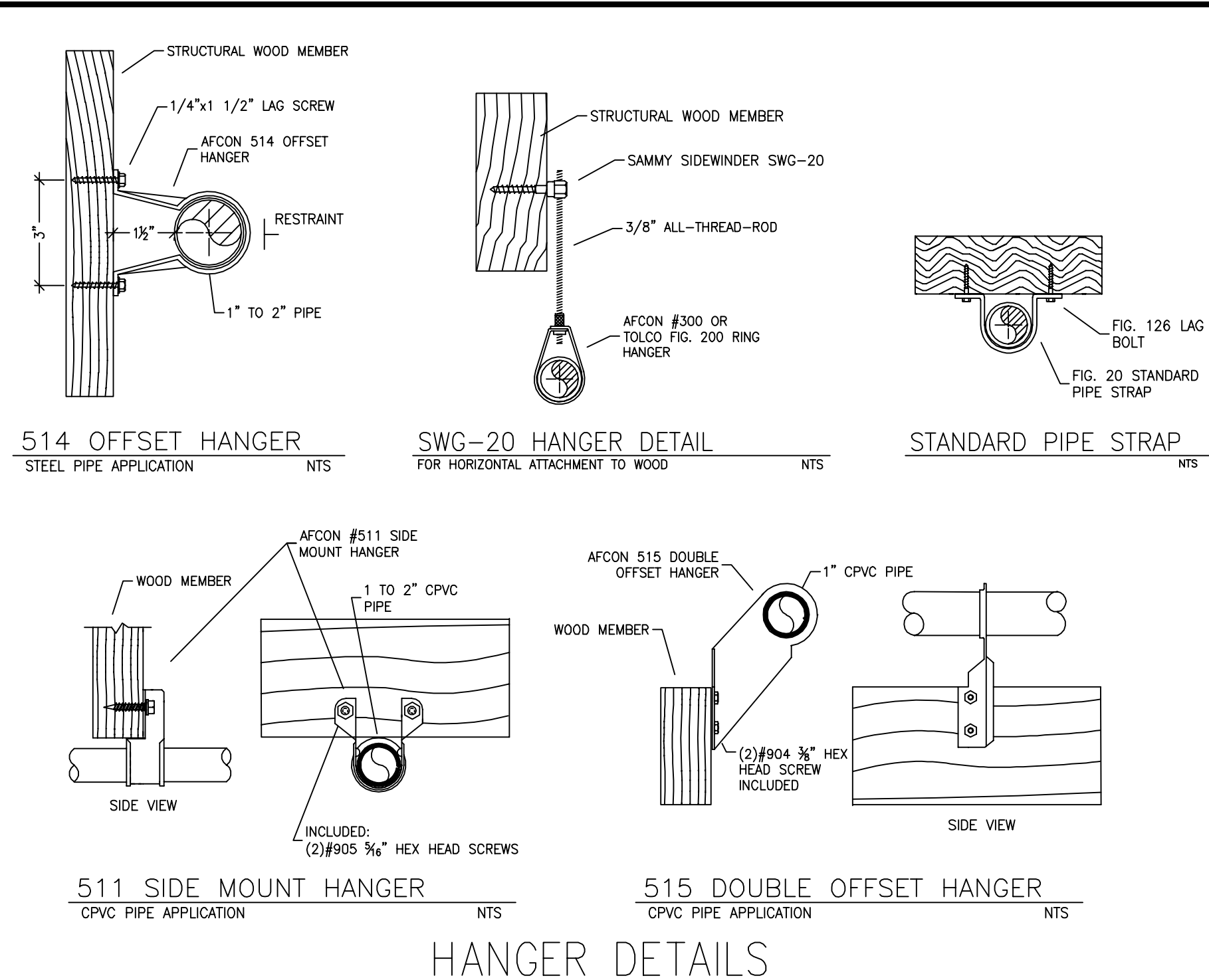
TOTAL PIPE FOOTAGE AND CAPACITY:
1" = 580' (28.68 GAL)
1-1/4" = 29' (2.30 GAL)

ADD 10% FOR DROPS AND PIPE SIZE DISCREPANCIES
TOTAL VOLUME: ± 34.08 GALLONS

NFPA 13 - Table A.7.2.3 Capacity of 1 ft. of pipe (Based on Actual Internal Pipe Diameter)			
Nominal Pipe Diameter (in.)	Pipe Schedule 40 Schedule 10 (gal)	CPVC	
1	0.045	0.049	0.049
1 1/4	0.078	0.085	0.079
1 1/2	0.106	0.115	0.104
2	0.174	0.190	
2 1/2	0.248	0.283	

NO SPRINKLERS REQUIRED IN:
BATHROOMS 55 SQ.FT. OR LESS IN AREA PER NFPA 13D SECTION 8.6.2
CLOSETS 24 SQ.FT. OR LESS IN AREA PER NFPA 13D SECTION 8.6.3

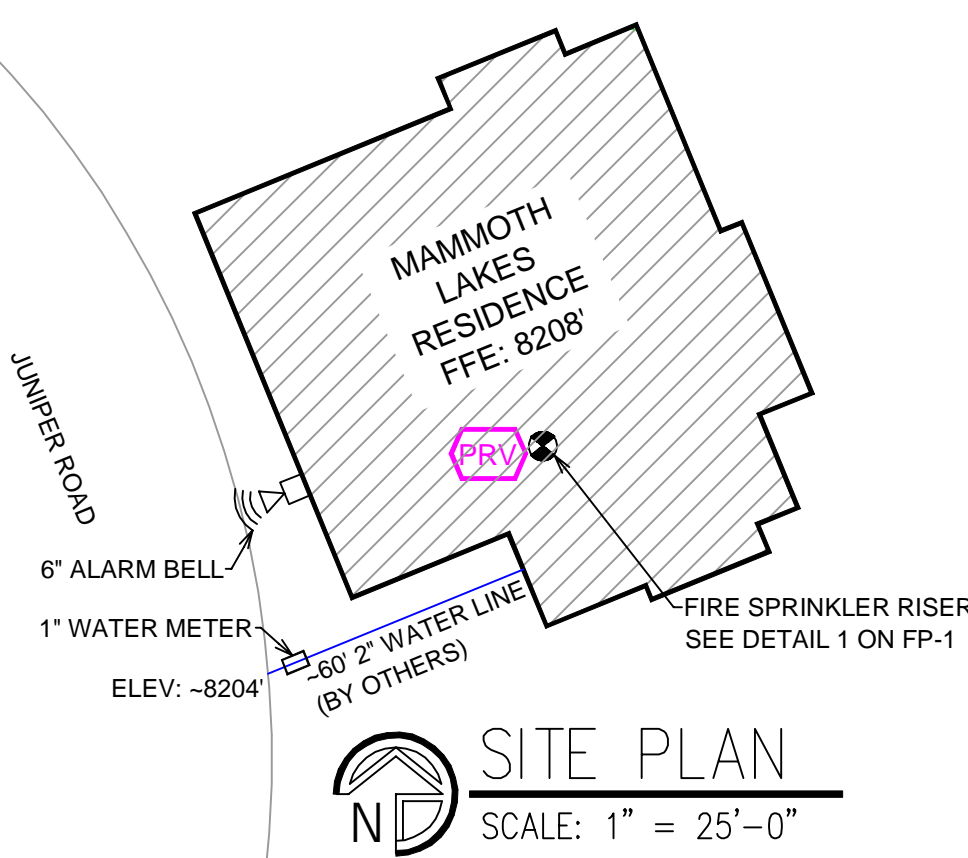
PROJECT SQUARE FOOTAGES
STORAGE LEVEL = 2076 SF
LOWER LEVEL = 2196 SF
MAIN LEVEL = 2194 SF



1 RISER DETAIL
SCALE: 1/2" = 1'-0"

FLOW TEST INFO:
STATIC: 149 PSI
RESID: 124 PSI
FLOW: 975 GPM
DATE: 2/22/2025

*FLOW TEST INFORMATION PROVIDED BY MAMMOTH LAKES FIRE PROTECTION DISTRICT. PRV INSTALLED TO REDUCE STATIC PRESSURE TO 75 PSI.



NO. DATE REVISIONS DRAWN CHECKED			
GENERAL CONTRACTOR: AUTHORITY HAVING JURISDICTION: MAMMOTH LAKES FIRE PROTECTION DIVISION			
ADDRESS: 3150 MAIN STREET			
CITY: MAMMOTH LAKES, CA 93546			
PHONE: 760-934-2300			
CONTACT:			
ARCHITECT: FIELD INSPECTIONS:			
ADDRESS: 1.			
CITY: 2.			
PHONE: 3.			
FIRE SPRINKLER NOTES:			
1. THE PROPOSED FIRE SPRINKLER SYSTEM IS AN ANTI-FREEZE SYSTEM AND SHALL BE DESIGNED AND INSTALLED IN ACCORDANCE WITH NFPA 13D 2022 PIPING UNLESS OTHERWISE NOTED.			
2. THIS SPRINKLER SYSTEM IS HYDRAULICALLY CALCULATED IN ACCORDANCE WITH NFPA 13D TO PROVIDE 0.05 GPM PER SQ. FT. OVER THE MOST REMOTE AREA.			
3. THE NUMBER OF DESIGN SPRINKLERS SHALL INCLUDE ALL SPRINKLERS WITHIN A COMPARTMENT UP TO A MAXIMUM OF 2 SPRINKLERS.			
4. ALL SPRINKLER PIPING CONCEALED ABOVE CEILINGS SHALL BE CPVC PIPING UNLESS OTHERWISE NOTED.			
5. ALL DIMENSIONS SHOWN ARE CENTER TO CENTER U.O.N.			
6. ALL HANGERS SHALL BE INSTALLED IN ACCORDANCE WITH NFPA 13D AND/OR NFPA 13 REQUIREMENTS.			
7. HOLES THROUGH SOLID STRUCTURAL MEMBERS SHALL BE PERMITTED TO SERVE AS HANGERS FOR THE SUPPORT OF SYSTEM PIPING.			
8. ALL SYSTEM PIPING SHALL BE TESTED FOR LEAKAGE AT NORMAL SYSTEM OPERATING PRESSURE.			
9. THE OWNER SHALL BE RESPONSIBLE FOR MAINTAINING A MINIMUM TEMPERATURE OF 40° FAHRENHEIT TO PROTECT FROM FREEZING, THE SECTIONS OF THE SPRINKLER SYSTEM WHERE THERE IS NO ANTI-FREEZE IN THE PIPING (UPSTREAM OF THE RISER).			
SPRINKLER HEAD LEGEND			
SYM	QTY	TYPE	WFS. MODEL# NPT K TEMP FINISH S.I.N.
45	CONCEALED	SEN/J	RC-RES 1/2" 4.9 162 WHITE SS8464
5	CONCEALED	SEN/J	RC-RES 1/2" 4.9 205 WHITE SS8464
4	SEM-RECESSED	SEN/J	FR-RES 1/2" 4.9 205 WHITE SS4451
54 TOTAL SPRINKLERS ON THIS SHEET			
FIRE SPRINKLER SYMBOLS			
⊗	AUTOMATIC SPRINKLER RISER	+13" ELEV. BELOW DECK OR TOS	
⊕	EARTHQUAKE BRACING	+12"-9" ELEV. ABOVE FINISHED FLOOR	
2-WAY & 4-WAY	PIPE HANGER	CHANGE ELEVATION UP	
○	HYDRAULIC REF PT	CHANGE ELEVATION DN	
—	GRVD OR THRD CAP	INSPECTORS TEST	
+	GRVD COUPLING	AUX DRAIN	
⊕	TYPICAL POINT OF CONNECTION (POC)	REVISION NOTATION	
		LOCAL ALARM	
SITE LOCATION:			
PROJECT NAME: FIRE SPRINKLER PLANS FOR			
MAMMOTH LAKES RESIDENCE			
205 JUNIPER ROAD			
MAMMOTH LAKES, CA 93546			
STAMP:			
DRAWING TITLE: FIRE SPRINKLER PLAN			
SCALE: 1/8" = 1'-0"		JOB NO.:	
DRAWN BY:		DWG NO.:	
BORN ON DATE: 2/21/2025		FP-1	
FILE:		SHEET 1 OF 1	