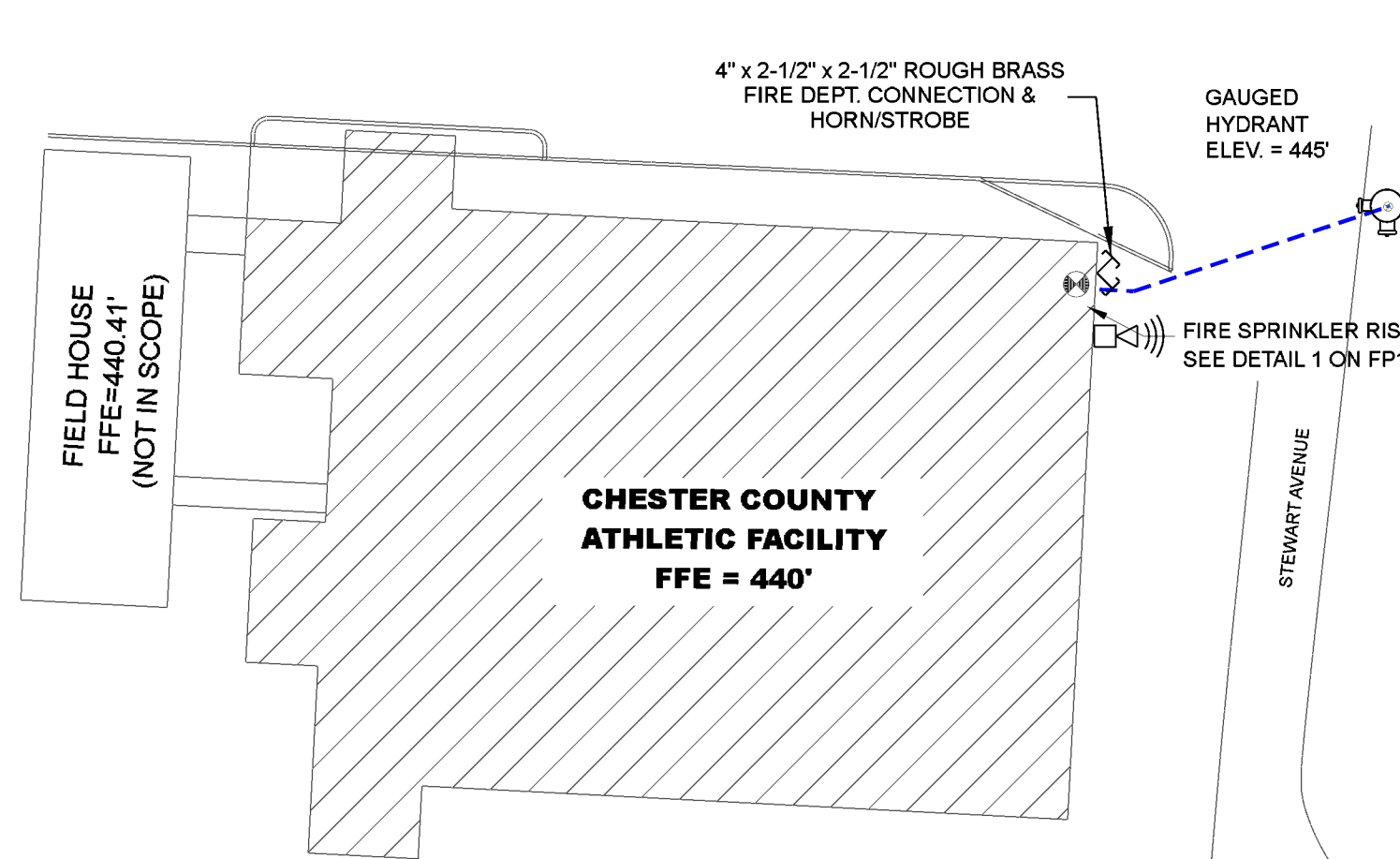


GENERAL INFORMATION

1. INTERNATIONAL BUILDING CODE (2018)
1.1 OCCUPANCY: TYPE A-4
1.2 TYPE OF CONSTRUCTION: II-B
1.3 SPRINKLERED AREAS (APPROXIMATE - SEE ARCHITECTURAL PLANS FOR ACTUAL)
MAIN FLOOR = 35,600 S.F.
1.4 DESIGN & INSTALLATION STANDARDS: NFPA-13 (2016)
2. DESIGN CRITERIA:
2.1 LIGHT HAZARD AREAS INCLUDE GYMNASIUM, RESTROOMS, AND LOBBY
2.2 ORDINARY HAZARD GROUP I AREAS INCLUDE STORAGE ROOMS
3. NOTES:
3.1 ALL MATERIAL TO BE NEW AND MEET U.L. STANDARDS
3.2 HANGERS TO BE INSTALLED IN ACCORDANCE WITH NFPA 13 - SEE PLAN FOR HANGING
4. SCOPE OF WORK:
4.1 INSTALL A COMPLETE SINGLE ZONE WET FIRE SPRINKLER SYSTEM TO COVER ALL AREAS OF BUILDING
4.2 ALL AREAS OF THE BUILDING TO BE INSTALLED AND COVERED IN ACCORDANCE WITH THE LOCAL AUTHORITY HAVING JURISDICTION AND PER NFPA 13, 2016 ED.

| # | DESCRIPTION |
|----|--|
| 1 | 6" FLANGE |
| 2 | 6" x 4" GRV. CONCENTRIC REDUCER |
| 3 | 4" GRVD. FLANGE |
| 4 | 4" GRVD. DERRINGER 20 DCVA |
| 5 | 4" FLG. GATE VALVE W/ WALL POST & TAMPER |
| 6 | 4" VICTAULIC 751 ALARM CHECK VALVE |
| 7 | FLOW SWITCH |
| 8 | 4" x 3" GRV. REDUCER |
| 9 | 4" GRV. CHECK VALVE |
| 10 | SPARE HEAD CABINET |
| 11 | HORN AND STROBE |
| 12 | DRAIN 90 |

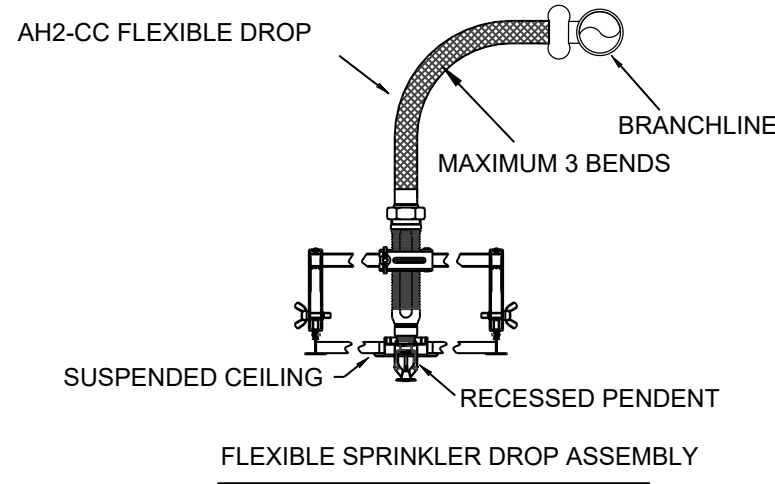
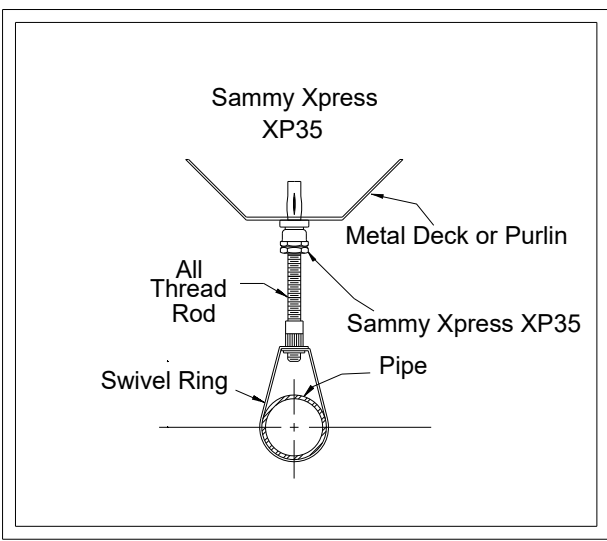


FLOW TEST INFO:
STATIC = 82 PSI
RESID = 60 PSI
FLOW = 1094 GPM



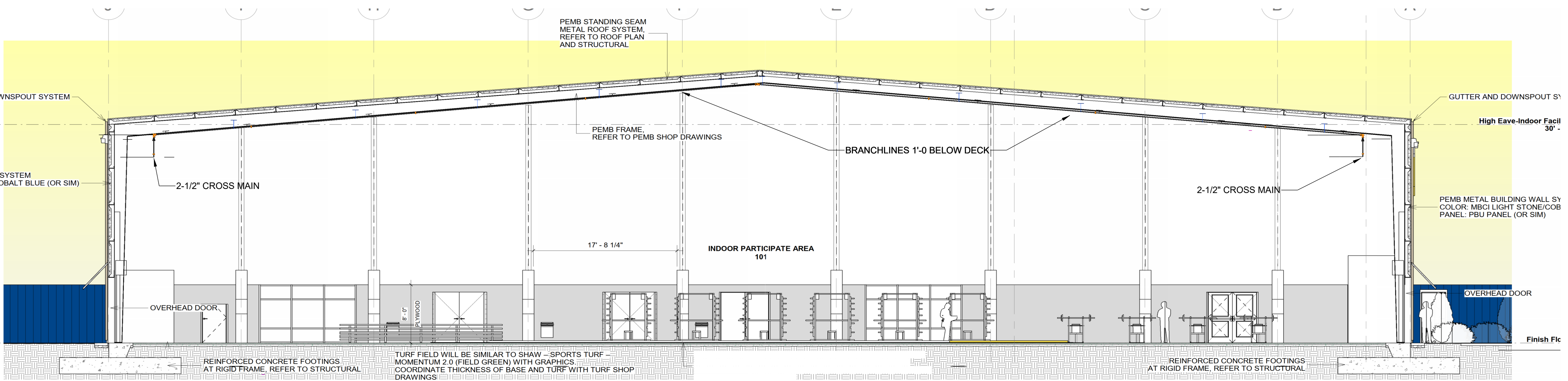
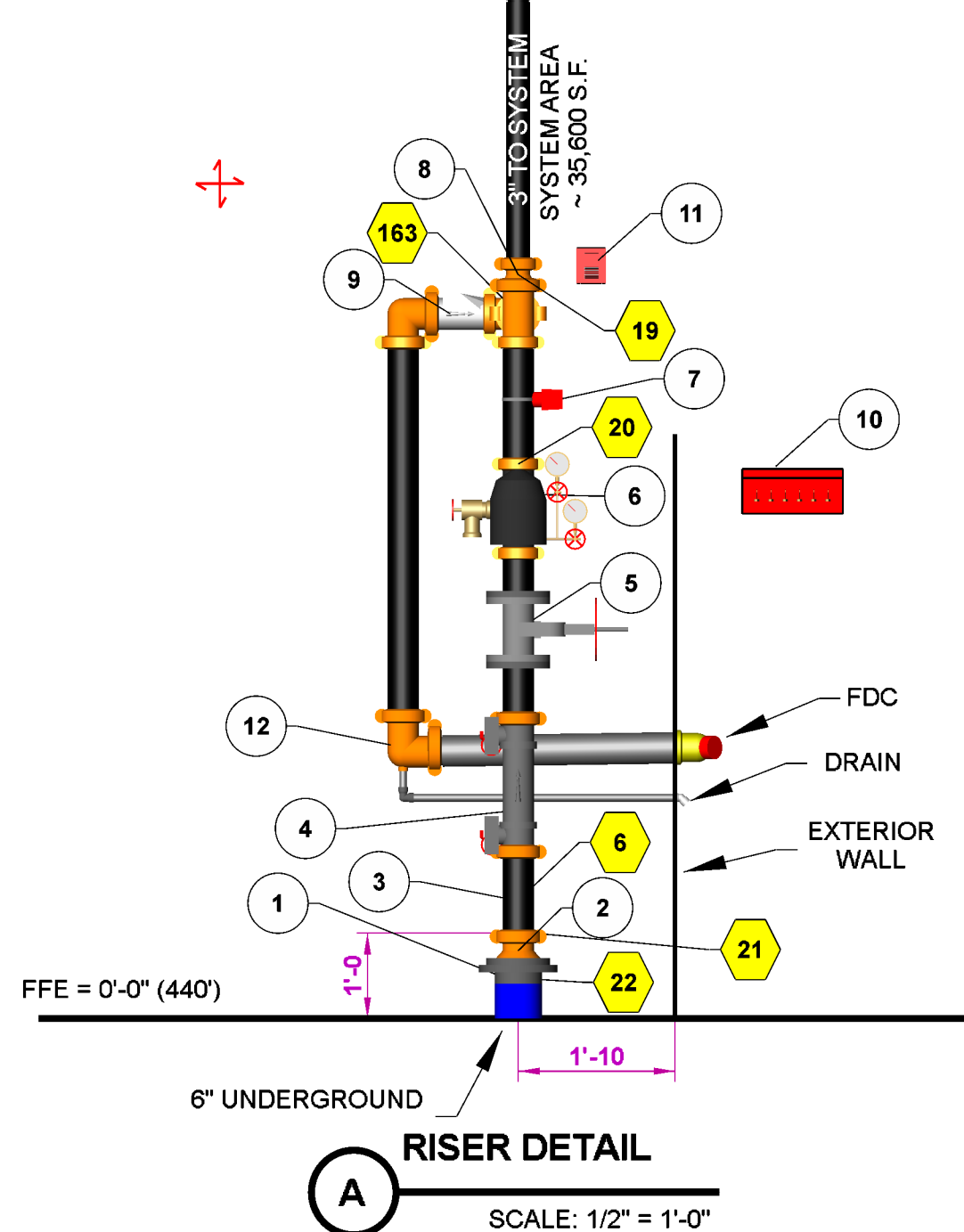
D VICINITY MAP
NOT TO SCALE

HANGER DETAILS



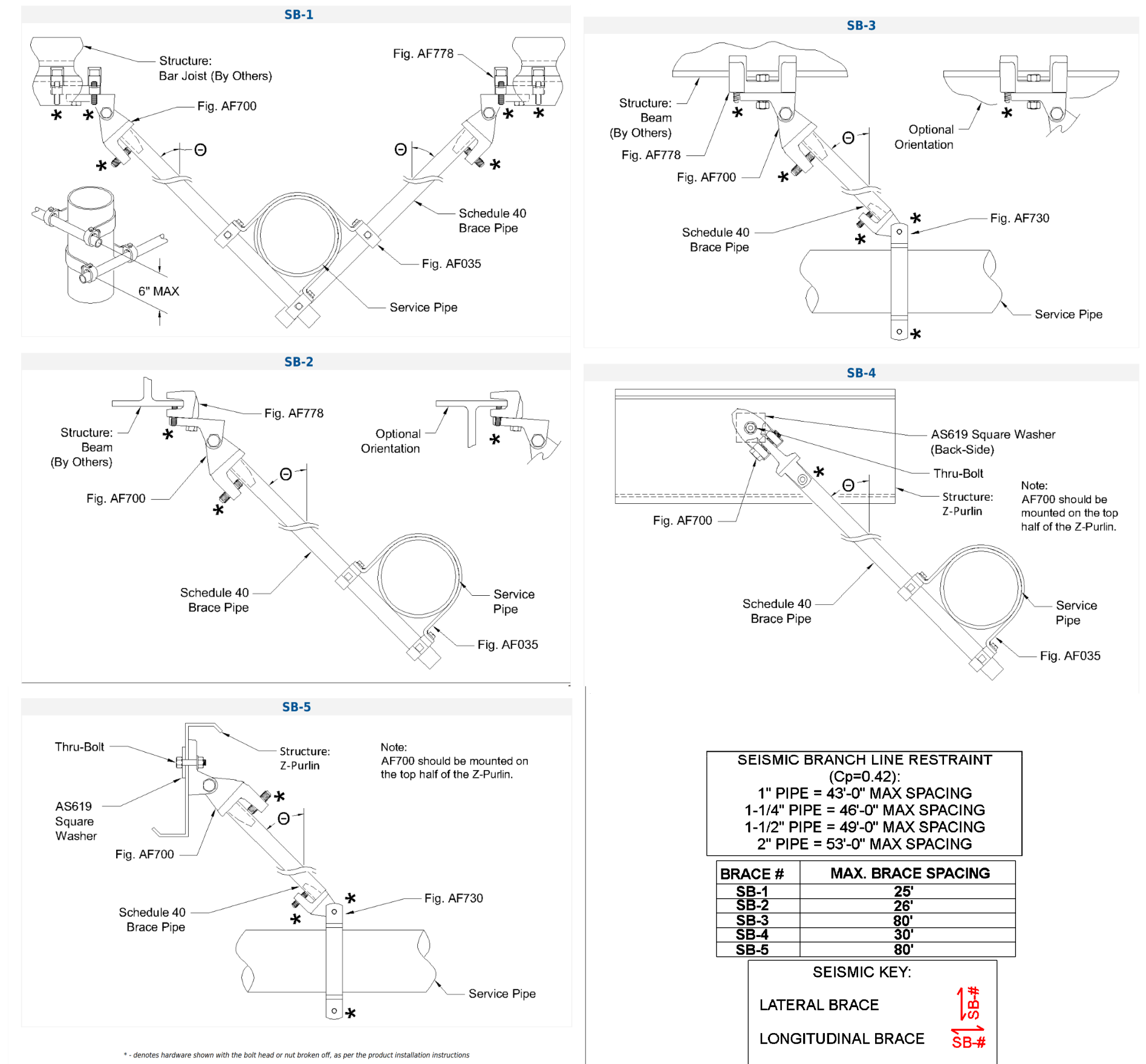
MAXIMUM DISTANCE BETWEEN HANGERS (FT.-IN.)

| | 3/4" | 1" | 1 1/4" | 1 1/2" | 2" | 2 1/2" | 3" | 4" | 6" | 8" |
|--------------------------------------|------|------|--------|--------|------|--------|------|------|------|------|
| STEEL PIPE EXCEPT THREADED LIGHTWALL | NA | 12-0 | 12-0 | 15-0 | 15-0 | 15-0 | 15-0 | 15-0 | 15-0 | 15-0 |
| THREADED LIGHTWALL STEEL PIPE | NA | 12-0 | 12-0 | 12-0 | 12-0 | NA | NA | NA | NA | NA |



B BUILDING SECTION
NTS

SEISMIC DETAILS



| Brace Name | Drawing Reference | Seismic Design Load | Structure | Brace Description | Fastener | Attachments |
|------------|-------------------|---------------------|------------------------|---|---|--|
| SB-1 | 1 | 97 lbf | Vertical Joint Flange | Lateral Orientation 30° - 44° 1 NPS Sch 40 | AF778 AF700 - 1/2" AF035 - 3 NPS x 1 NPS | AF778 AF700 - 1/2" AF035 - 3 NPS x 1 NPS |
| SB-2 | 1 | 418 lbf | Horizontal Beam Flange | Lateral Orientation 30° - 44° 1 NPS Sch 40 | AF778 AF700 - 1/2" AF035 - 3 NPS x 1 NPS | AF778 AF700 - 1/2" AF035 - 3 NPS x 1 NPS |
| SB-3 | 1 | 228 lbf | Horizontal Beam Flange | Longitudinal Orientation 30° - 44° 1 NPS Sch 40 | AF778 AF700 - 1/2" AF035 - 3 NPS x 1 NPS | AF778 AF700 - 1/2" AF035 - 3 NPS x 1 NPS |
| SB-4 | 1 | 285 lbf | Z-Purlin | Lateral Orientation G 30° - 44° 1 NPS Sch 40 | 1/2" Thru-Bolt with AS619 Square Washer AF700 - 1/2" AF035 - 2 L2 NPS x 1 NPS | AF700 - 1/2" AF035 - 2 L2 NPS x 1 NPS |
| SB-5 | 1 | 228 lbf | Z-Purlin | Longitudinal Orientation D 30° - 44° 1 NPS Sch 40 | 1/2" Thru-Bolt with AS619 Square Washer AF700 - 1/2" AF035 - 2 L2 NPS | AF700 - 1/2" AF035 - 2 L2 NPS |

1. ALL GROOVED COUPLINGS TO BE RIGID STYLE U.N.O.
2. ALL SEISMIC BRACING TO BE AS PER NFPA 13 AND FM GLOBAL.
3. TWO FLEX. COUPLINGS ON RISERS 7'-0" OVER
4. ONE FLEX. COUPLING ON RISERS OVER 3'-0" AND UNDER 7'-0"
5. FLEXIBLE COUPLINGS CAN BE OMITTED FROM RISERS UNDER 3'-0"
6. ONE FLEX COUPLING WITHIN 1'-0" OF ALL CONCRETE / MASONRY WALLS, ON BOTH SIDES OF WALL
7. FOUR WAY BRACE TO BE INSTALLED WITHIN 2'-0" OF THE TOP OF ALL SYSTEM RISERS
DISTANCE BETWEEN SUPPORT FOR RISERS SHALL NOT EXCEED 25'-0"
A RISER BRACE MAY BE UTILIZED FOR RISERS EXCEEDING 25'-0"
8. BRACE LOCATIONS ARE APPROXIMATE

SEISMIC KEY:
LATERAL BRACE
LONGITUDINAL BRACE
BRANCH LINE RESTRAINT

PIPE & FITTINGS

1. ALL SYSTEM PIPING TO BE SCH 10 BLACK STEEL PIPE FOR MAINS AND BRANCH LINES AND SCH 40 FOR DROPS AND ASM OVERS.
2. ALL GROOVED FITTINGS ARE REDUCED TAKEOUT OR SHORT RADII.
3. ALL GROOVED COUPLINGS ARE TO BE RIGID, U.N.O.
4. ALL PIPE MEASUREMENTS ARE CUT LENGTH, U.N.O.

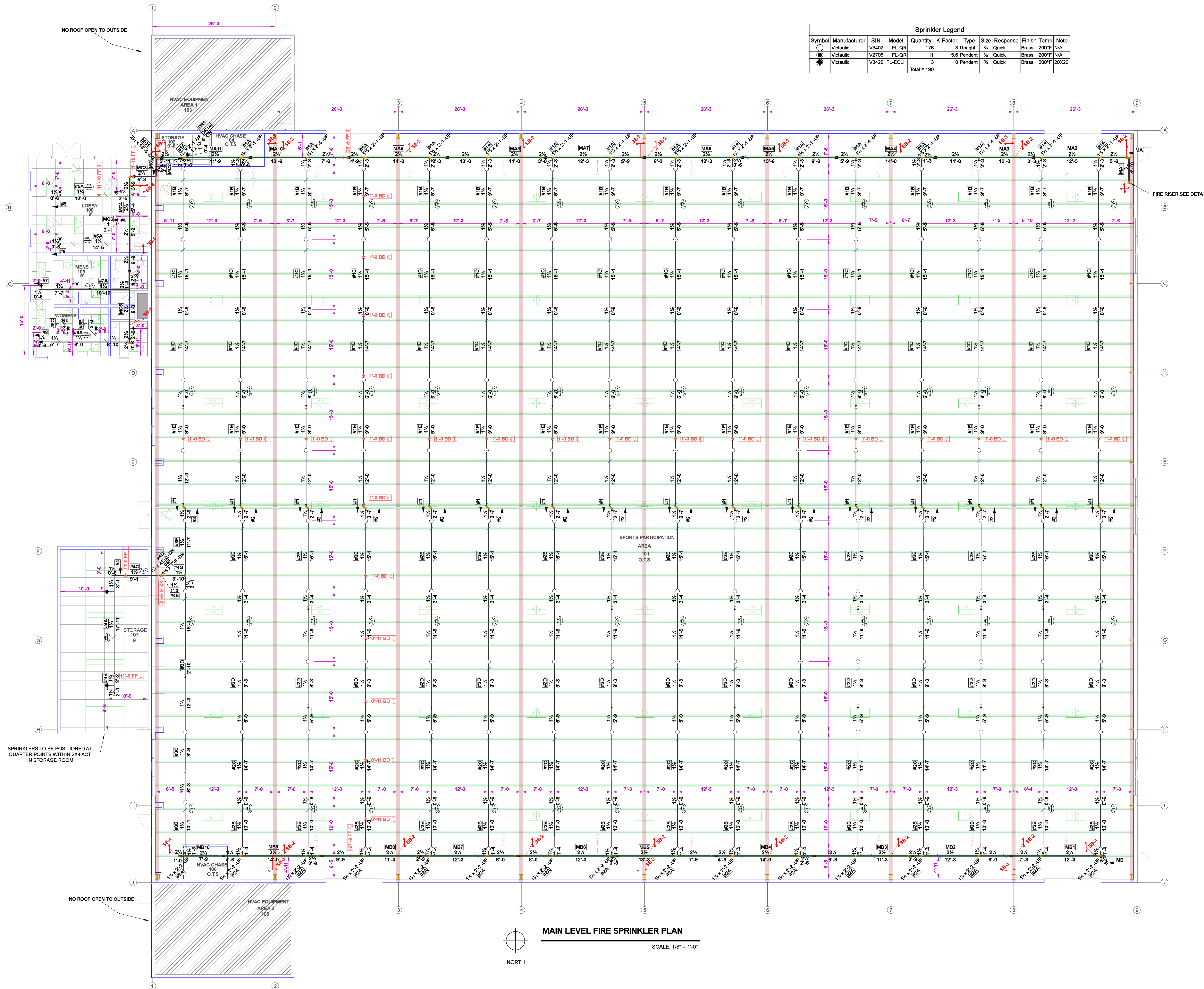
SYMBOLS

- APPROXIMATE HANGER LOCATION
PIPE ELEVATION ABOVE FINISHED FLOOR
PIPE ELEVATION BELOW TOP OF STEEL
GROOVED COUPLING LOCATION
SPRINKLER HEAD ON RETURN BEND ASSEMBLY
SPRINKLER HEAD ON RETURN BEND DOWN ASSEMBLY
SPRINKLER PIPING ROUTED UP
SPRINKLER PIPING ROUTED DOWN
HYDRAULIC CALCULATION REFERENCE NODE
Z PURLIN
PEMB I BEAM

Project Name:

CHESTER COUNTY ATHLETIC CENTER

552 EAST MAIN STREET
HENDERSON, TN.



| Sprinkler Legend | | | | | | | | | | |
|------------------|--------------|-------|---------|-------------|----------|---------|------|----------|--------|-------|
| Symbol | Manufacturer | SIN | Model | Quantity | K-Factor | Type | Size | Response | Finish | Temp |
| ○ | Victaulic | V3402 | FL-QR | 176 | 8 | Upright | 1/2" | Quick | Brass | 200°F |
| ● | Victaulic | V2708 | FL-QR | 11 | 5.6 | Pendent | 1/2" | Quick | Brass | 200°F |
| ◆ | Victaulic | V3428 | FL-ECLH | 3 | 8 | Pendent | 1/2" | Quick | Brass | 200°F |
| | | | | Total = 190 | | | | | | |

1. ALL SYSTEM PIPING TO BE SCH 10 BLACK STEEL PIPE FOR MAINS AND BRANCH LINES AND SCH 40 FOR DROPS AND ARM OVERS.
2. ALL GROOVED FITTINGS ARE REDUCED TAKEOUT OR SHORT RADIUS.
3. ALL GROOVED COUPLINGS ARE TO BE RIGID, U.N.O.
4. ALL PIPE MEASUREMENTS ARE CUT LENGTH, U.N.O.

SYMBOLS

- APPROXIMATE HANGER LOCATION
- PIPE ELEVATION ABOVE FINISHED FLOOR
- PIPE ELEVATION BELOW TOP OF STEEL
- GROOVED COUPLING LOCATION
- SPRINKLER HEAD ON RETURN BEND ASSEMBLY
- SPRINKLER HEAD ON RETURN BEND DOWN ASSEMBLY
- SPRINKLER PIPING ROUTED UP
- SPRINKLER PIPING ROUTED DOWN
- HYDRAULIC CALCULATION REFERENCE NODE
- Z PURLIN
- PEMS I BEAM

Project Name:

CHESTER COUNTY ATHLETIC CENTER

552 EAST MAIN STREET
HENDERSON, TN.