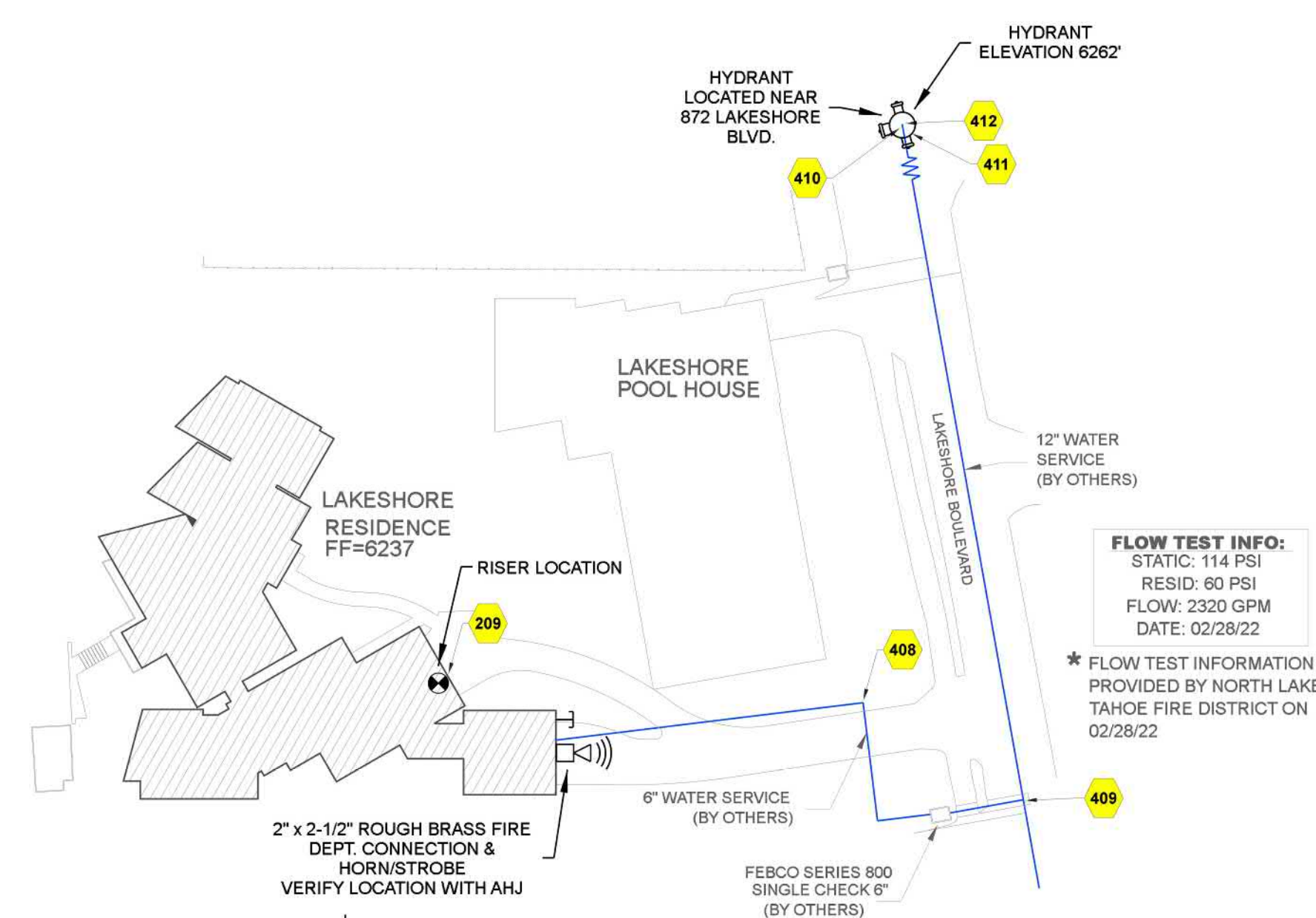


**HANGER DETAILS**

MAXIMUM DISTANCE BETWEEN HANGERS (FT.-IN.)

	3/4"	1"	1 1/4"	1 1/2"	2"	2 1/2"	3"	4"	5"	6"	8"
STEEL PIPE EXCEPT THREADED LIGHTWALL	NA	12-0	12-0	15-0	15-0	15-0	15-0	15-0	15-0	15-0	15-0
THREADED LIGHTWALL STEEL PIPE	NA	12-0	12-0	12-0	12-0	NA	NA	NA	NA	NA	NA
BLAZEMASTER CPVC	5-6	6-0	6-0	6-6	7-0	8-0	10-0	NA	NA	NA	NA



**SITE PLAN**

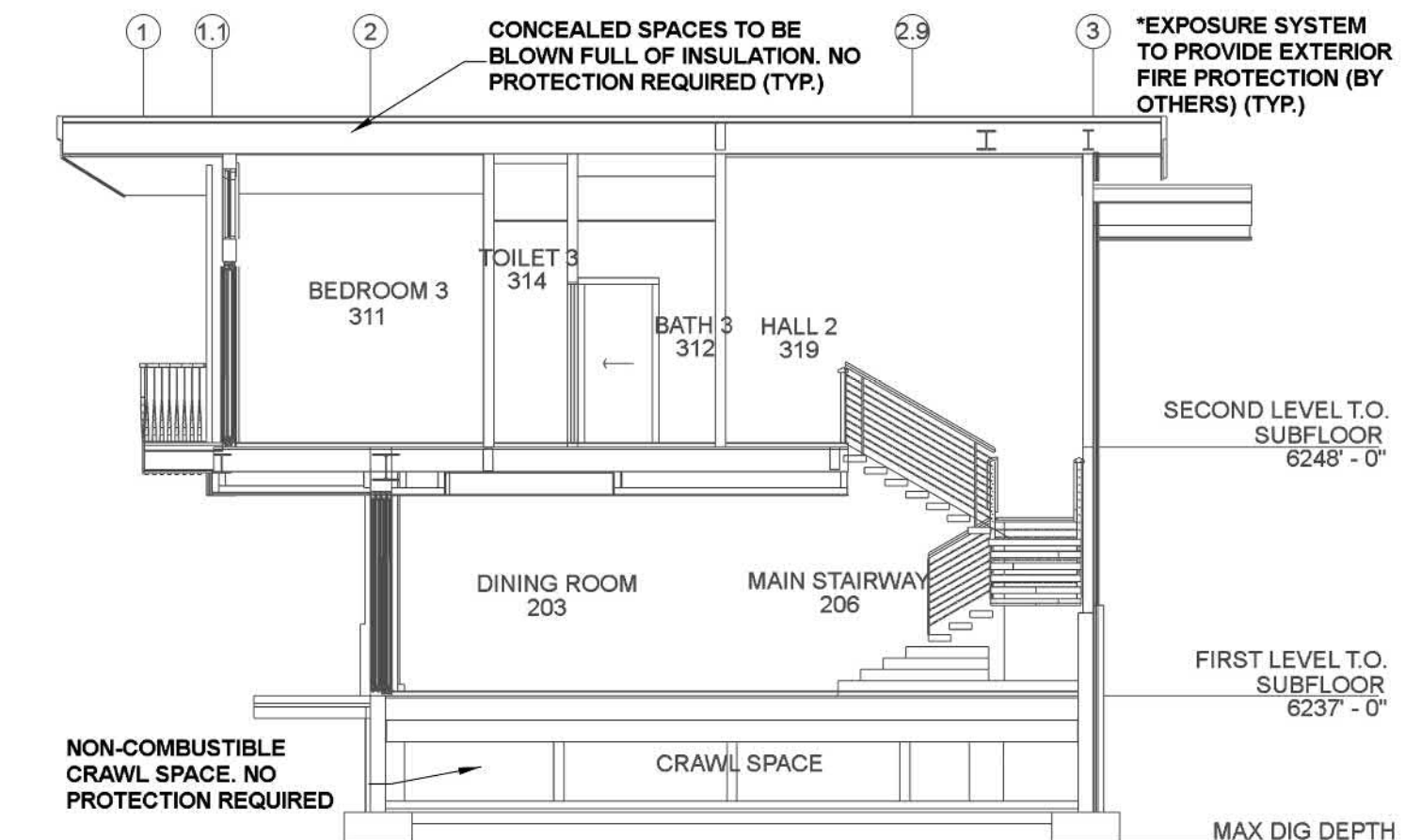
SCALE: 1" = 50'-0"

**SPRINKLER HEAT ZONES:**

HEAT SOURCE:	ORDINARY TEMP. SPRINKLER	INTERMEDIATE TEMP. SPRINKLER
SIDE OF OPEN OR RECESSED FIRE PLACE	36"	12"
FRONT OF RECESSED FIRE PLACE	60"	36"
COAL OR WOOD BURNING STOVE	42"	12"
RANGE/OVEN, HOT AIR FLUES & UNINSULATED HEAT DUCT	18"	9"
UNINSULATED HOT WATER PIPES & 250-499 WATT LIGHTS	12"	6"
SIDE OF CEILING OR WALL MOUNTED HOT AIR DIFFUSERS	24"	12"
FRONT OF WALL MOUNTED HOT AIR DIFFUSERS	36"	18"
HOT WATER HEATER, FURNACE, LIGHT FIXTURE 0-250 WATT	6"	3"

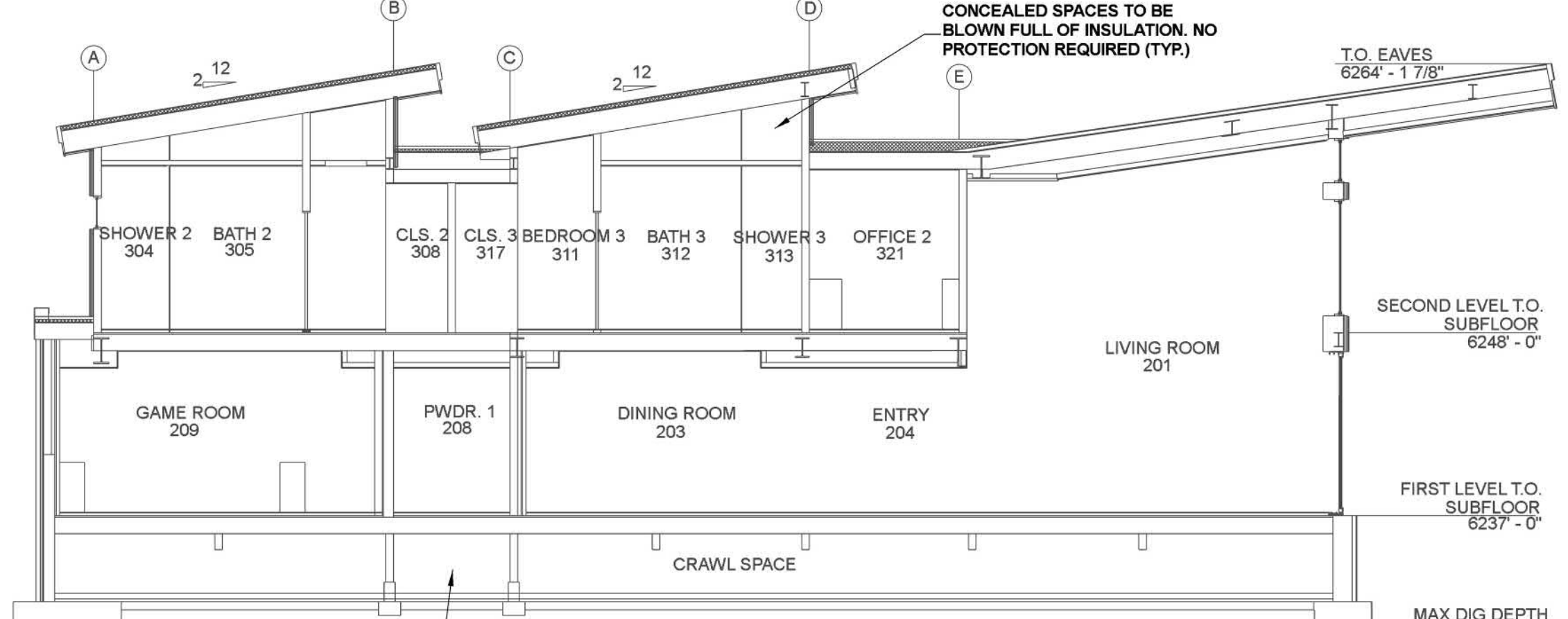
**Overall Building Sprinkler Legend**

Symbol	Manufacturer	SIN	Model	Quantity	K-Factor	Type	Size	Response	Finish	Temp	Max Spacing
○	Tyco	TY1311	TY-FRB	14	5.6	Upright	1/2"	Quick	Brass	200° F	15' x 15'
●	Tyco	TY3231	TY-FRB	26	5.6	Pendent	1/2"	Quick	White	200° F	15' x 15'
○	Tyco	TY3596	LFII	89	4.9	Pendent	1/2"	Fast	White	155° F	15' x 15'
○	Tyco	TY3531	RFII	2	5.6	Pendent	1/2"	Quick	White	200° F	15' x 15'
○	Tyco	TY8282	TY-FRB	3	5.6	Pendant	1/2"	Quick	Steel	286° F	15' x 15'
○	Tyco	TY3331	TY-FRB	3	5.6	Sidewall	1/2"	Quick	Chrome	200° F	15' x 15'
Total = 137											



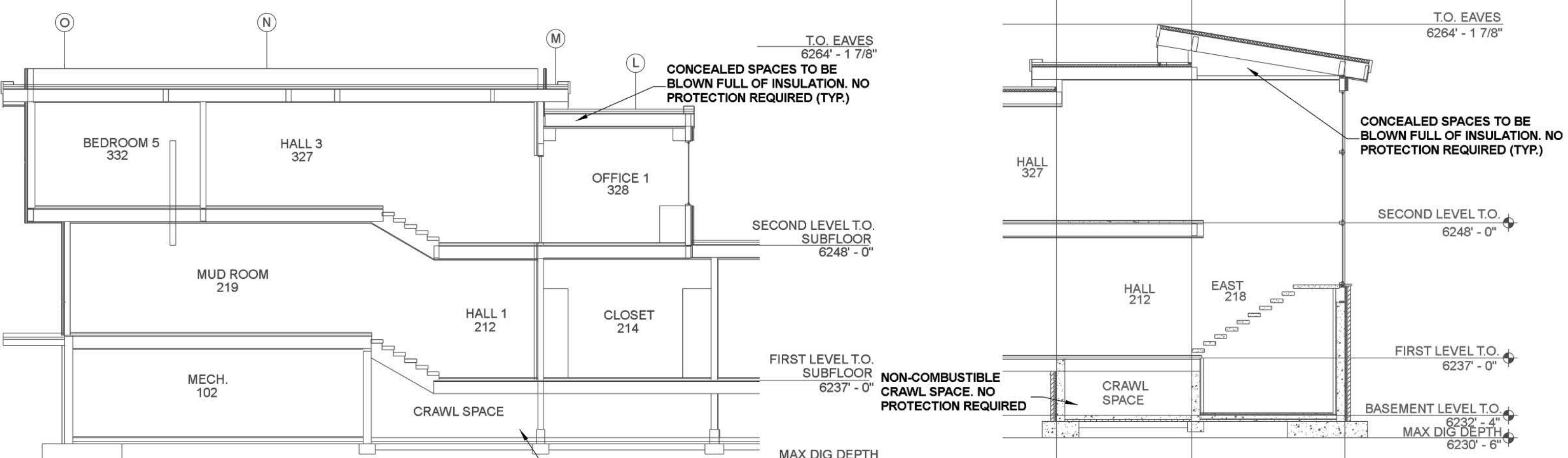
**BUILDING SECTION A**

SCALE: 1/8" = 1'-0"



**BUILDING SECTION B**

SCALE: 1/8" = 1'-0"



**BUILDING SECTION C**

SCALE: 1/8" = 1'-0"

**BUILDING SECTION D**

SCALE: 1/8" = 1'-0"

**PROJECT SUMMARY**

PROJECT NAME: WHISPER HOMES RESIDENCE  
 PROJECT ADDRESS: 887 LAKESHORE BLVD.  
 PARCEL NUMBER: 122-181-79  
 PROJECT TYPE: NEW T1  
 TYPE OF CONSTRUCTION: V-8  
 OCCUPANCY GROUP (S): R-3  
 OCCUPIED LEVELS: 3  
 TOTAL SPRINKLER AREA: 12,859 SQ FT  
 NFPA CODE REQUIREMENT: NFPA 13 NFPA 13R NFPA 13D  
 NUMBER OF SYSTEMS: 2  
 SYSTEM TYPE (S): WET ANTIFREEZE DRY PREACTION  
 SPECIAL NOTES: SEE FIRE SPRINKLER NOTES THIS SHEET

NO.	DATE	REVISION	DRAWN	CHECKED

**GENERAL CONTRACTOR** AUTHORITY HAVING JURISDICTION  
 ADDRESS: FIRE PROTECTION DISTRICT  
 CITY: ADDRESS: 868 ORIOLE WAY  
 PHONE: CITY: INCLINE VILLAGE, NV 89451  
 CONTACT: PHONE: 775-831-0351  
 CONTACT: JENNIFER DONOHUE

**ARCHITECT** FIELD INSPECTIONS:  
 J.K. ARCHITECTURE ENGINEERING 1  
 ADDRESS: 1131 N MCCARRAN BLVD. 2  
 CITY: SPARKS, NV 89222 3  
 PHONE: 530-563-9322 4  
 CONTACT: KELLY HEBSTER

- THE PROPOSED FIRE SPRINKLER SYSTEM CONSISTS OF AN ANTIFREEZE SYSTEM AND A WET SYSTEM. BOTH SHALL BE DESIGNED AND INSTALLED PER CFC & CBC 2016 NFPA 13 (2016 ED) AND THE AHJ.
- THIS SPRINKLER SYSTEM IS HYDRAULICALLY CALCULATED IN ACCORDANCE WITH NFPA 13.
- DESIGN CRITERIA  
 - LIGHT HAZARD AREAS DESIGN TO 0.10 GPM/S.F. OVER THE MOST DEMANDING 1500 SQ. FT.  
 - ORDINARY HAZARD GROUP I AREAS DESIGN TO 0.15 GPM/S.F. OVER THE MOST DEMANDING 1500 SQ. FT.  
 - REMOTE AREA REDUCTIONS TAKEN WHERE ALLOWED IN O.H. AND LIGHT HAZARD ONLY.
- ALL EXPOSED PIPING TO BE BLACK STEEL. ALL CONCEALED PIPING TO BE CPVC.
- 1" STEEL PIPE TO BE THREADED SCHEDULE 40 PIPE WITH DUCTILE IRON THREADED FITTINGS.
- 1-1/4" THROUGH 6" STEEL PIPE TO BE SCHEDULE 10 PIPE WITH ROLL GROOVED SHORT RADIUS FITTINGS AND WELDED OUTLETS.
- ALL HANGERS SHALL BE INSTALLED IN ACCORDANCE WITH NFPA 13 REQUIREMENTS.
- HOLES THROUGH SOLID STRUCTURAL MEMBERS SHALL BE PERMITTED TO SERVE AS HANGERS FOR THE SUPPORT OF SYSTEM PIPING.
- ALL SYSTEM PIPING SHALL BE TESTED FOR LEAKAGE PER NFPA 25 REQUIREMENTS.
- THE OWNER SHALL BE RESPONSIBLE FOR MAINTAINING A MINIMUM TEMPERATURE OF 40° F AMBIENT TO PROTECT FROM FREEZING.
- ALL DIMENSIONS ARE SHOWN CENTER TO CENTER UNLESS NOTED.

**SPRINKLER HEAD LEGEND**

SYM	QTY	TYPE	MFG	MODEL #	NPT	K	TEMP	FINISH	S.I.N.
○	14	UPRIGHT	TYCO	TY-FRB	1/2"	5.6	200	BRASS	TY1311
●	1	SIDEWALL	TYCO	TY-FRB	1/2"	5.6	200	CHROME	TY3331
○	8	PENDENT	TYCO	TY-FRB	1/2"	5.6	200	WHITE	TY3231

**21 TOTAL SPRINKLERS ON THIS SHEET**

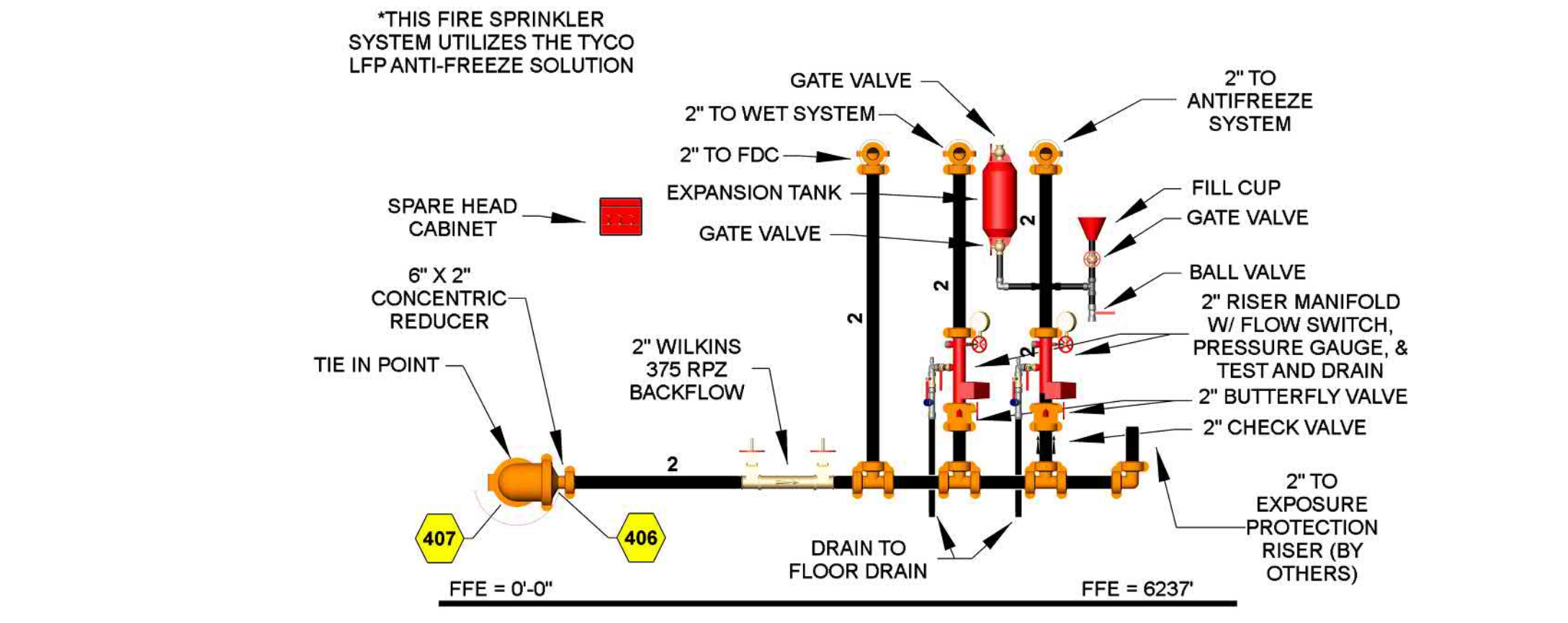
- FIRE SPRINKLER SYMBOLS**
- FF: PIPE ELEVATION ABOVE FINISH FLOOR
  - TS: PIPE ELEVATION BELOW TOP OF STEEL
  - OH: ROOM HAZARD CLASSIFICATION (ALL ROOMS ARE CONSIDERED LIGHT HAZARD UNLESS NOTED)
  - HJ: HYDRAULIC CALCULATION JUNCTION POINT
- CEILING HEIGHT**
- 9'-0": WET CPVC PIPE
  - 10'-0": WET BLACK STEEL PIPE
  - 11'-0": ANTIFREEZE CPVC PIPE
  - 12'-0": ANTIFREEZE BLACK STEEL PIPE



PROJECT NAME: FIRE SPRINKLER PLANS FOR  
**WHISPER HOMES RESIDENCE**  
 887 LAKESHORE BLVD.  
 INCLINE VILLAGE, NV 89451

**DRAWING TITLE: FIRE SPRINKLER PLAN**

SCALE: 1/8" = 1'-0" JOB NO: 22-1098  
 DRAWN BY: DWG NO:  
 BORN ON DATE: 2-29-2024 FILE: FP-1  
 FILE: 2-29-2024 SHEET 1 OF 3



**RISER DETAIL**

SCALE: 1/2" = 1'-0"

**Antifreeze System Pipe Footage**

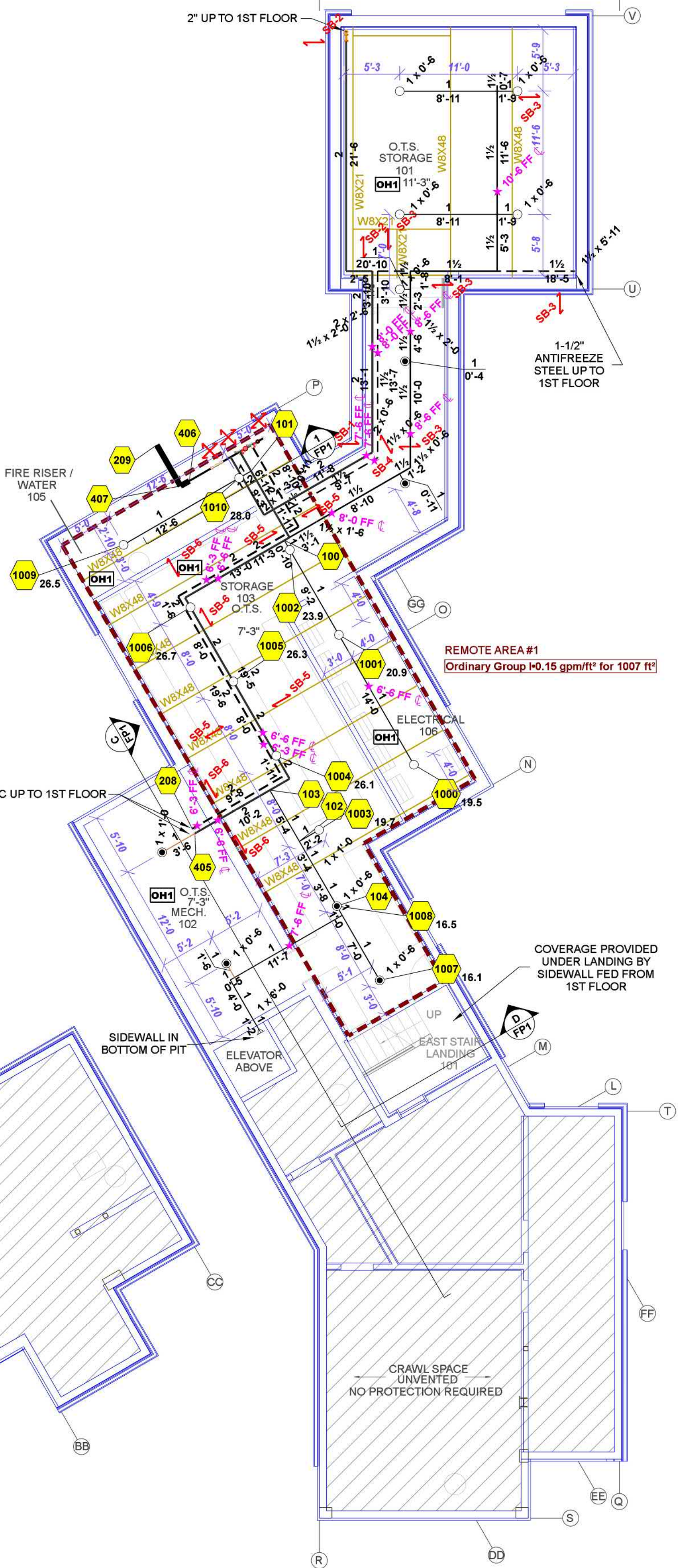
Quantity	Size	Description	Gallons
67'-0"	1"	Pipe, CPVC	4.25
84'-1"	1 1/4"	Pipe, CPVC	8.75
10'-1"	2"	Pipe, CPVC	2.30
62'-0"	1 1/2"	Pipe, Schedule 10	7.13
63'-7"	2"	Pipe, Schedule 10	10.21
Additional 10%			3.27
Total Gallons:			35.89

GALLONS WERE CALCULATED USING THE INFORMATION FROM NFPA 13 TABLE A.7.2.3 AND MANUFACTURER SPECIFICATIONS

**Hydraulic Information**

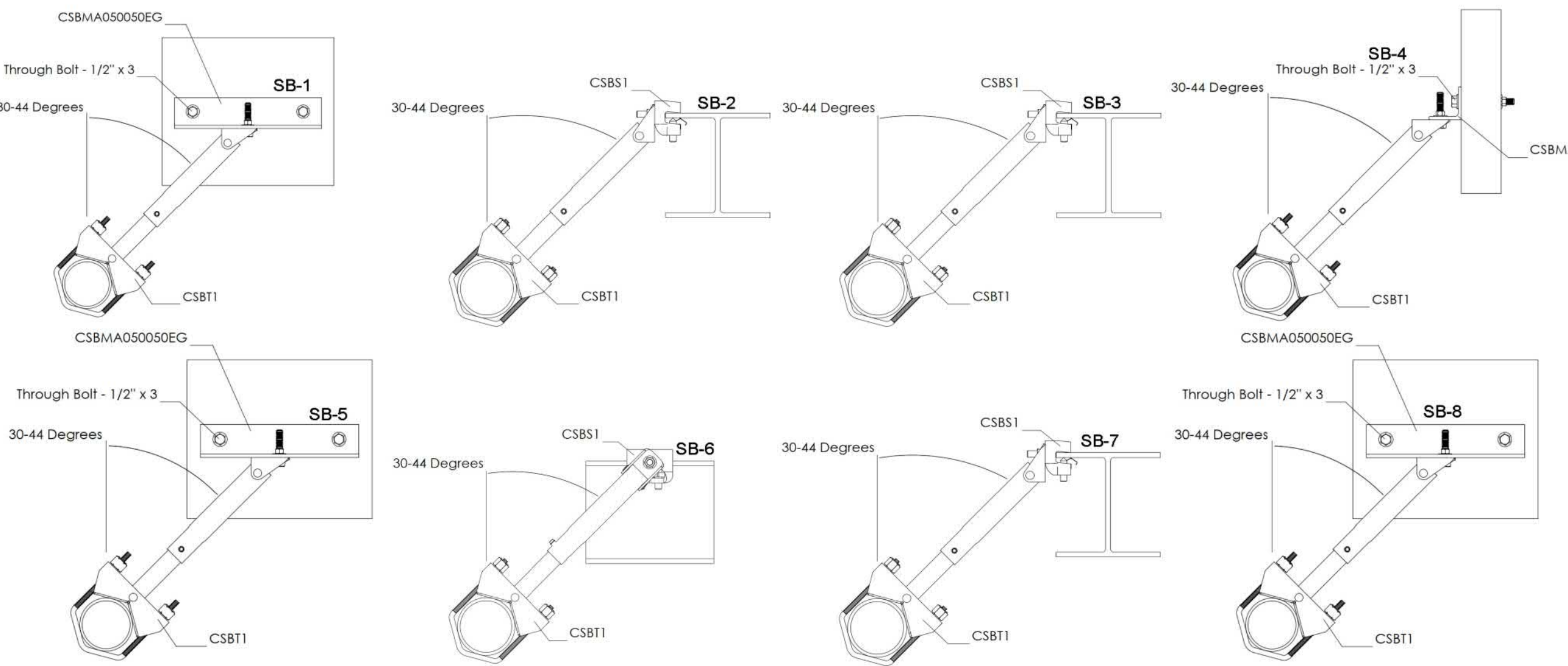
Remote Area 1	
OCCUPANCY CLASSIFICATION	Ordinary Group I
DENSITY (gpm/ft²)	0.15 for 1500ft² (Actual 1007ft²)
TOTAL HOSE STREAMS	250.0
TOTAL HEADS FLOWING	11
K-FACTOR	5.6
TOTAL WATER REQUIRED	500.4
TOTAL PRESSURE REQUIRED	71.8
BASE OF RISER (gpm)	500.4
BASE OF RISER (psi)	71.8
SAFETY MARGIN (psi)	+38.9 (38.1%)

HYDRAULIC ZONE 1 WAS CALCULATED USING THE DENSITY / AREA METHOD. OR REDUCTION WAS USED ACCORDING TO NFPA 13, SECTION 11.2.3.2.3



**BASEMENT LEVEL FIRE SPRINKLER PLAN**

SCALE: 1/8" = 1'-0"



**SEISMIC BRACE DESCRIPTIONS**

NAME	MAX SPACING	BRACE TYPE	PIPE	BRACED STRUCTURE	ORIENTATION
SB-1	40'-0"	LATERAL	2" SCH 10	TJI	PARALLEL
SB-2	40'-0"	LATERAL	2" SCH 10	I-BEAM	PERPENDICULAR
SB-3	20'-0"	LATERAL	1-1/2" SCH 10	I-BEAM	PERPENDICULAR
SB-4	20'-0"	LATERAL	1-1/2" SCH 10	TJI	PARALLEL
SB-5	20'-0"	LATERAL	2" SCH 10	I-BEAM	PARALLEL
SB-6	20'-0"	LATERAL	2" SCH 10	I-BEAM	PERPENDICULAR
SB-7	10'-0"	LATERAL	1-1/2" CPVC	TJI	PARALLEL
SB-8	10'-0"	LATERAL	1-1/2" CPVC	TJI	PERPENDICULAR

**SEISMIC KEY:**

LATERAL BRACE  
 LONGITUDINAL BRACE  
 BRANCH LINE RESTRAINT

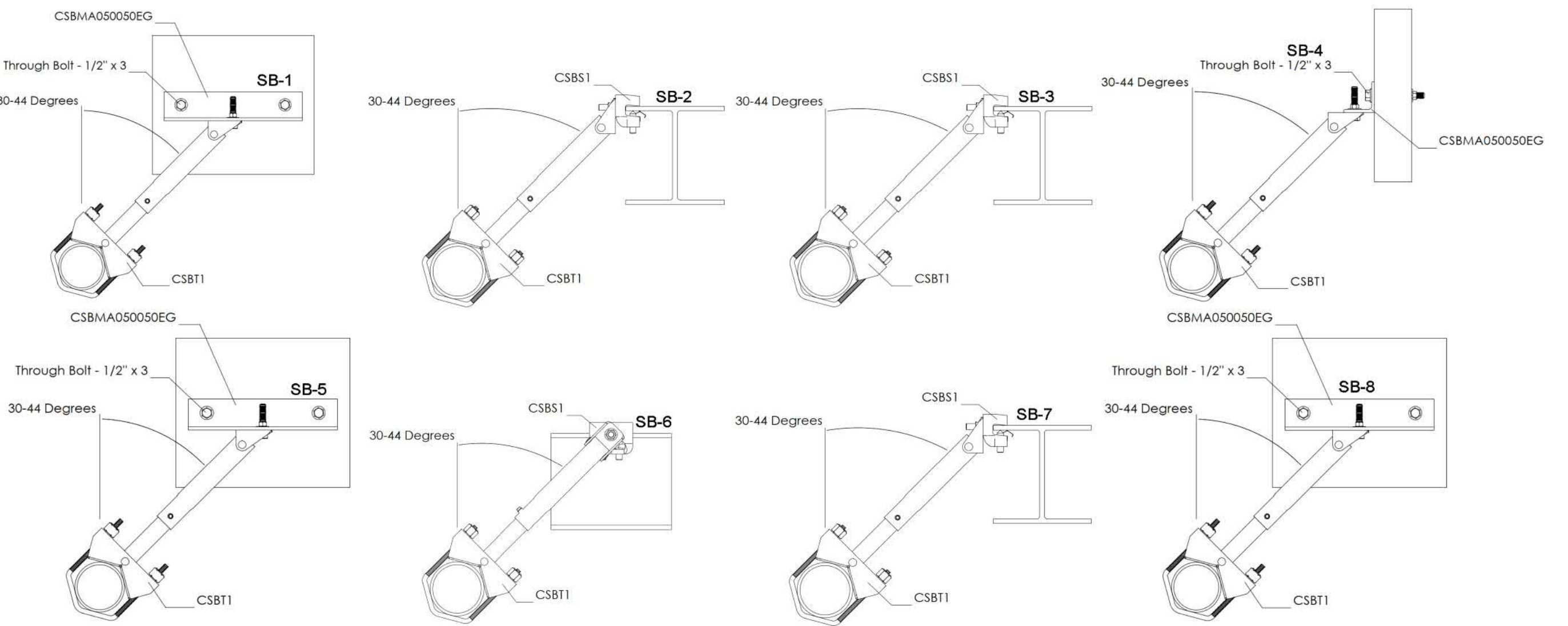
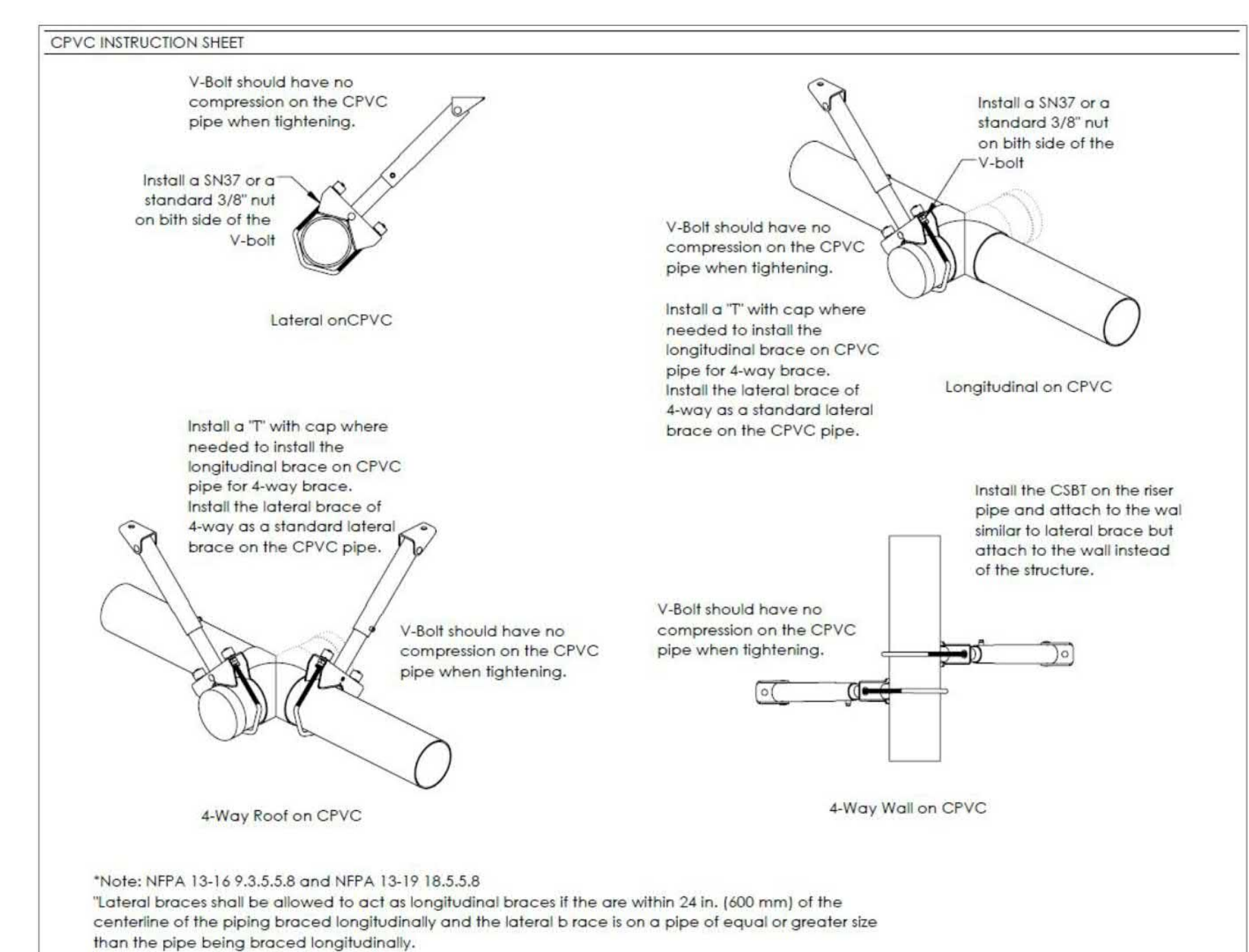
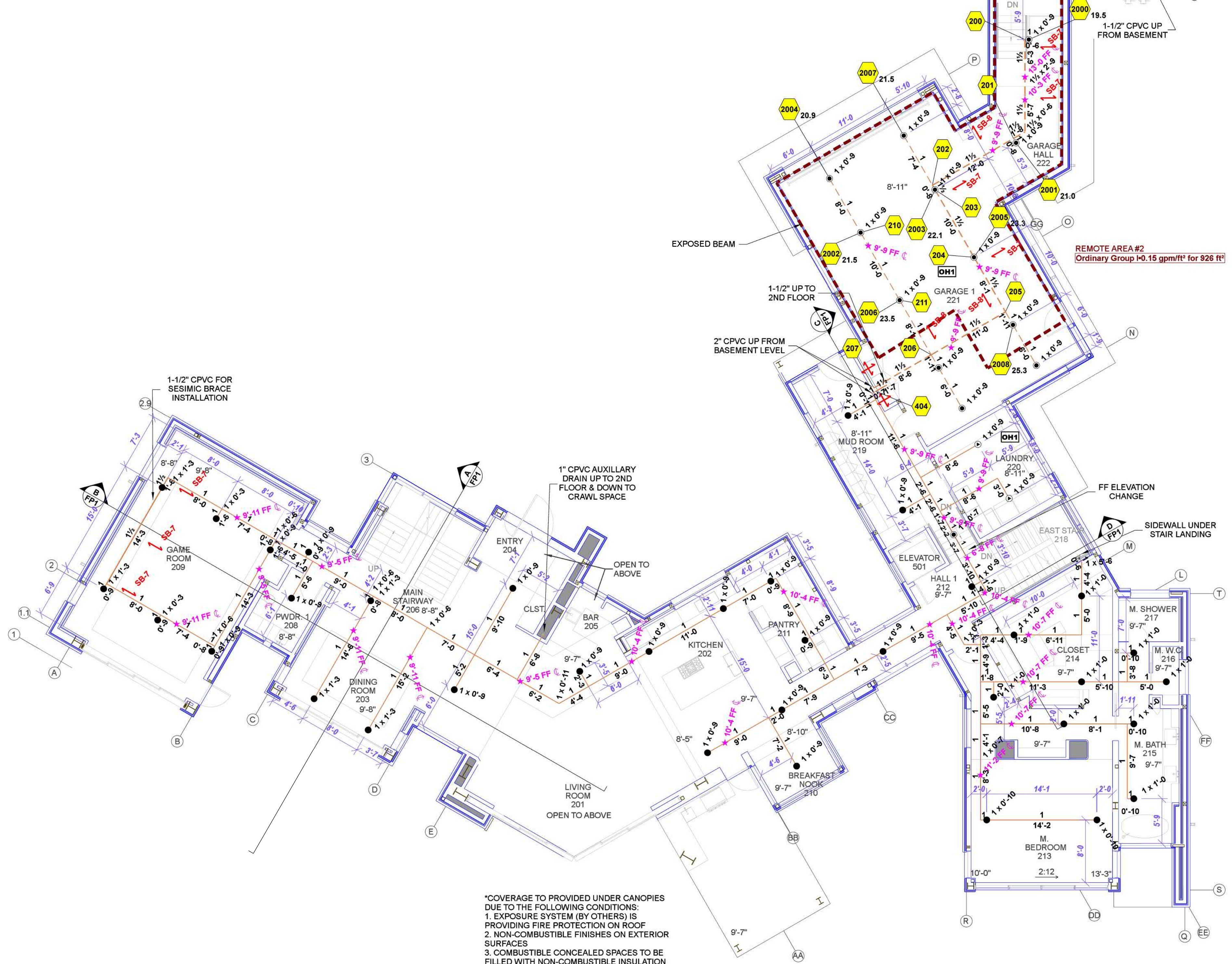
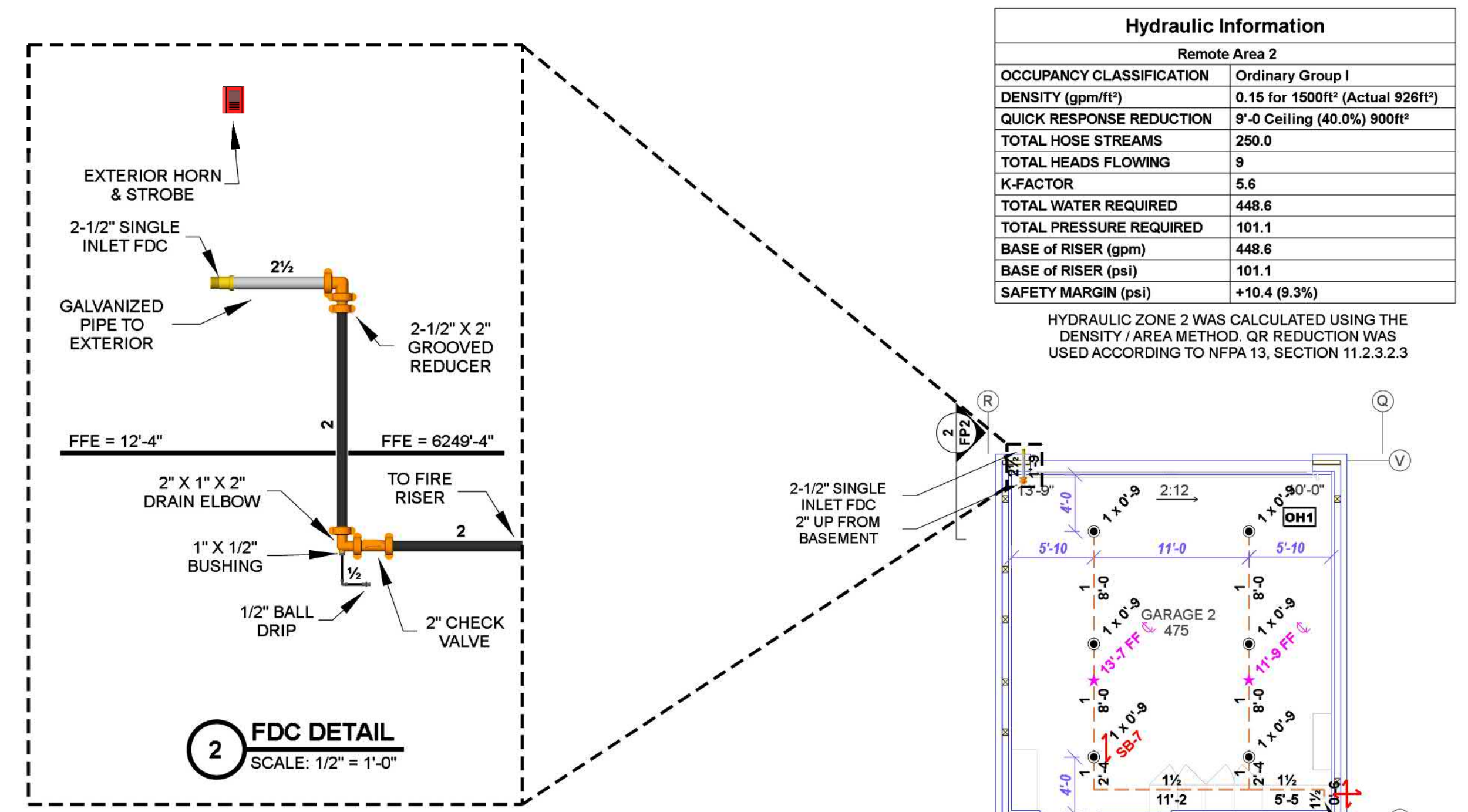
**SEISMIC DETAILS**

\*BRANCH LINE RESTRAINT MAY BE OMITTED WITH CPVC HANGERS LISTED TO PROVIDE RESTRAINT PER NFPA 13 SEC. 9.3.6.1(4)



SPRINKLER HEAT ZONES:			
HEAT SOURCE:	ORDINARY TEMP. SPRINKLER	INTERMEDIATE TEMP. SPRINKLER	
SIDE OF OPEN OR RECESSED FIRE PLACE	36"	12"	
FRONT OF RECESSED FIRE PLACE	60"	36"	
COAL OR WOOD BURNING STOVE	42"	18"	
RANGE/OVEN, HOT AIR FLUES & UNINSULATED HEAT DUCT	12"	6"	
UNINSULATED HOT WATER PIPES & 250-499 WATT LIGHTS	24"	12"	
SIDE OF CEILING OR WALL MOUNTED	36"	18"	
HOT AIR DIFFUSERS	36"	18"	
FRONT OF WALL MOUNTED HOT AIR DIFFUSERS	6"	3"	
HOT WATER HEATER, FURNACE, LIGHT FIXTURE	6"	3"	
0-250 WATT			

Overall Building Sprinkler Legend											
Symbol	Manufacturer	SIN	Model	Quantity	K-Factor	Type	Size	Response	Finish	Temp	Max Spacing
○	Tyco	TY1311	TY-FRB	14	5.6	Upright	1/2"	Quick	Brass	200° F	15' x 15'
●	Tyco	TY3231	TY-FRB	26	5.6	Pendent	1/2"	Quick	White	200° F	15' x 15'
○	Tyco	TY3596	LFII	89	4.9	Pendent	1/2"	Fast	White	155° F	16' x 16'
○	Tyco	TY3531	RFII	2	5.6	Pendent	1/2"	Quick	White	200° F	15' x 15'
○	Tyco	TY2382	TY-FRB	3	5.6	Pendent	1/2"	Quick	Steel	286° F	15' x 15'
○	Tyco	TY3331	TY-FRB	3	5.6	Sidewall	1/2"	Quick	Chrome	200° F	15' x 15'
				<b>Total = 137</b>							



SEISMIC BRACE DESCRIPTIONS					
NAME	MAX SPACING	BRACE TYPE	PIPE BRACED	STRUCTURE / ORIENTATION	
SB-1	40'-0"	LATERAL	2" SCH 10	T-J	PARALLEL
SB-2	40'-0"	LATERAL	2" SCH 10	I-BEAM	PERPENDICULAR
SB-3	20'-0"	LATERAL	1-1/2" SCH 10	I-BEAM	PERPENDICULAR
SB-4	20'-0"	LATERAL	1-1/2" SCH 10	T-J	PARALLEL
SB-5	20'-0"	LATERAL	2" SCH 10	I-BEAM	PARALLEL
SB-6	20'-0"	LATERAL	2" SCH 10	I-BEAM	PERPENDICULAR
SB-7	10'-0"	LATERAL	1-1/2" CPVC	T-J	PARALLEL
SB-8	10'-0"	LATERAL	1-1/2" CPVC	T-J	PERPENDICULAR

SEISMIC KEY:	
LATERAL BRACE	SB-1
LONGITUDINAL BRACE	CS81
BRANCH LINE RESTRAINT	SB-4

\*BRANCH LINE RESTRAINT MAY BE OMITTED WITH CPVC HANGERS LISTED TO PROVIDE RESTRAINT PER NFPA 13 SEC. 9.3.6.1(4)

**PROJECT SUMMARY**

PROJECT NAME: WHISPER HOMES RESIDENCE  
 PROJECT ADDRESS: 887 LAKE SHORE BLVD.  
 PARCEL NUMBER: 122-181-79  
 PROJECT TYPE: NEW T1  
 TYPE OF CONSTRUCTION: V-8  
 OCCUPANCY GROUP(S): R-3  
 OCCUPIED LEVELS: 3  
 TOTAL SPRINKLERED AREA: 12,859 SQ. FT.  
 NFPA CODE REQUIREMENT: NFPA 13 NFPA 13R NFPA 13D  
 NUMBER OF SYSTEMS: 2  
 SYSTEM TYPE(S): WET ANTI-FREEZE DRY PREACTION  
 TOTAL SPRINKLERS: 137  
 SPECIAL NOTES: SEE FIRE SPRINKLER NOTES THIS SHEET

NO.	DATE	REVISION	DRAWN	CHECKED

**GENERAL CONTRACTOR** AUTHORITY HAVING JURISDICTION  
**ADDRESS:** FIRE PROTECTION DISTRICT  
**CITY:** ADDRESS:  
**PHONE:** CITY:  
**CONTACT:** PHONE:  
**CONTACT:** CONTACT

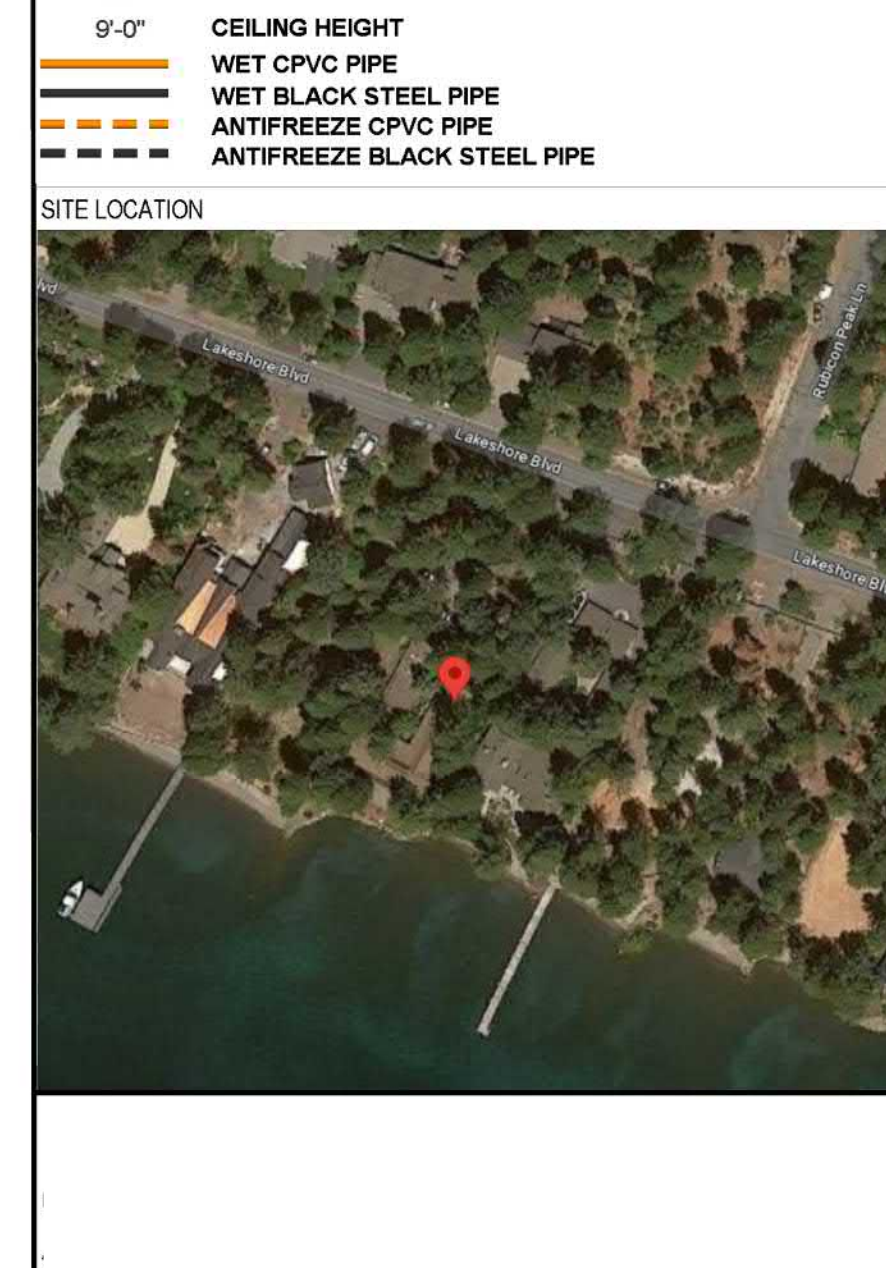
**ARCHITECT:** FIELD INSPECTIONS  
 JK ARCHITECTURE ENGINEERING 1  
 ADDRESS: 1131 N MCCARRAN BLVD. 2  
 CITY: SPARKS, NV 89222 3  
 PHONE: 530-563-6922 4  
 CONTACT: KELLY HOBBS-TEITLER

1. THE PROPOSED FIRE SPRINKLER SYSTEM CONSISTS OF AN ANTI-FREEZE SYSTEM AND A WET SYSTEM. BOTH SHALL BE DESIGNED AND INSTALLED PER CFC & CBC (2016 NFPA 13 (2016 ED) AND THE AHJ.  
 2. THIS SPRINKLER SYSTEM IS HYDRAULICALLY CALCULATED IN ACCORDANCE WITH NFPA 13  
 3. DESIGN CRITERIA  
 - LIGHT HAZARD AREAS DESIGN TO 0.10 GPM/S.F. OVER THE MOST DEMANDING 1500 SQ. FT.  
 - ORDINARY HAZARD GROUP I AREAS DESIGN TO 0.15 GPM/S.F. OVER THE MOST DEMANDING 1500 SQ. FT.  
 - REMOTE AREA REDUCTIONS TAKEN WHERE ALLOWED IN OH1 AND LIGHT HAZARD ONLY  
 4. ALL EXPOSED PIPING TO BE BLACK STEEL. ALL CONCEALED PIPING TO BE 1/2" STEEL PIPE TO BE THREADED SCHEDULE 40 PIPE WITH DUCTILE IRON THREADED FITTINGS  
 5. 1-1/4" THROUGH 6" STEEL PIPE TO BE SCHEDULE 10 PIPE WITH ROLL GROOVED SHORT RADIUS FITTINGS AND WELDED OUTLETS  
 6. HANGERS SHALL BE INSTALLED IN ACCORDANCE WITH NFPA 13 REQUIREMENTS  
 7. HOLES THROUGH SOLID STRUCTURAL MEMBERS SHALL BE PERMITTED TO SERVE AS HANGERS FOR THE SUPPORT OF SYSTEM PIPING  
 8. ALL SYSTEM PIPING SHALL BE TESTED FOR LEAKAGE PER NFPA 25 REQUIREMENTS  
 9. THE OWNER SHALL BE RESPONSIBLE FOR MAINTAINING A MINIMUM TEMPERATURE OF 40° FAHRENHEIT TO PROTECT FROM FREEZING  
 11. ALL DIMENSIONS ARE SHOWN CENTER TO CENTER U.N.O.

SPRINKLER HEAD LEGEND									
SYM	QTY	TYPE	MFG	MODEL #	NPT	K	TEMP	FINISH	SIN
○	19	PENDENT	TYCO	TY-FRB	1/2"	5.6	200	WHITE	TY3231
●	36	PENDENT	TYCO	LFII	1/2"	4.9	155	WHITE	TY3596
○	2	PENDENT	TYCO	RFII	1/2"	5.6	200	WHITE	TY3531
○	1	SIDEWALL	TYCO	TY-FRB	1/2"	5.6	200	CHROME	TY3331

**58 TOTAL SPRINKLERS ON THIS SHEET**

**FIRE SPRINKLER SYMBOLS**  
 \*x/FF: PIPE ELEVATION ABOVE FINISH FLOOR  
 \*x/BS: PIPE ELEVATION BELOW TOP OF STEEL  
 DMH: ROOM HAZARD CLASSIFICATION (ALL ROOMS ARE CONSIDERED LIGHT HAZARD U.N.O.)  
 ●: HYDRAULIC CALCULATION JUNCTION POINT  
 9'-0": CEILING HEIGHT  
 ---: WET CPVC PIPE  
 ---: WET BLACK STEEL PIPE  
 ---: ANTI-FREEZE CPVC PIPE  
 ---: ANTI-FREEZE BLACK STEEL PIPE



PROJECT NAME: FIRE SPRINKLER PLANS FOR  
**WHISPER HOMES RESIDENCE**  
 887 LAKE SHORE BLVD.  
 INCLINE VILLAGE, NV 89451

DRAWING TITLE:  
**FIRE SPRINKLER PLAN**

SCALE: 1/8" = 1'-0" JOB NO: 22-1098  
 DRAWN BY: DWG NO:  
 BORN ON DATE: 2-29-2024  
 FILE: 2-29-2024  
**FP-2**  
 SHEET 2 OF 3

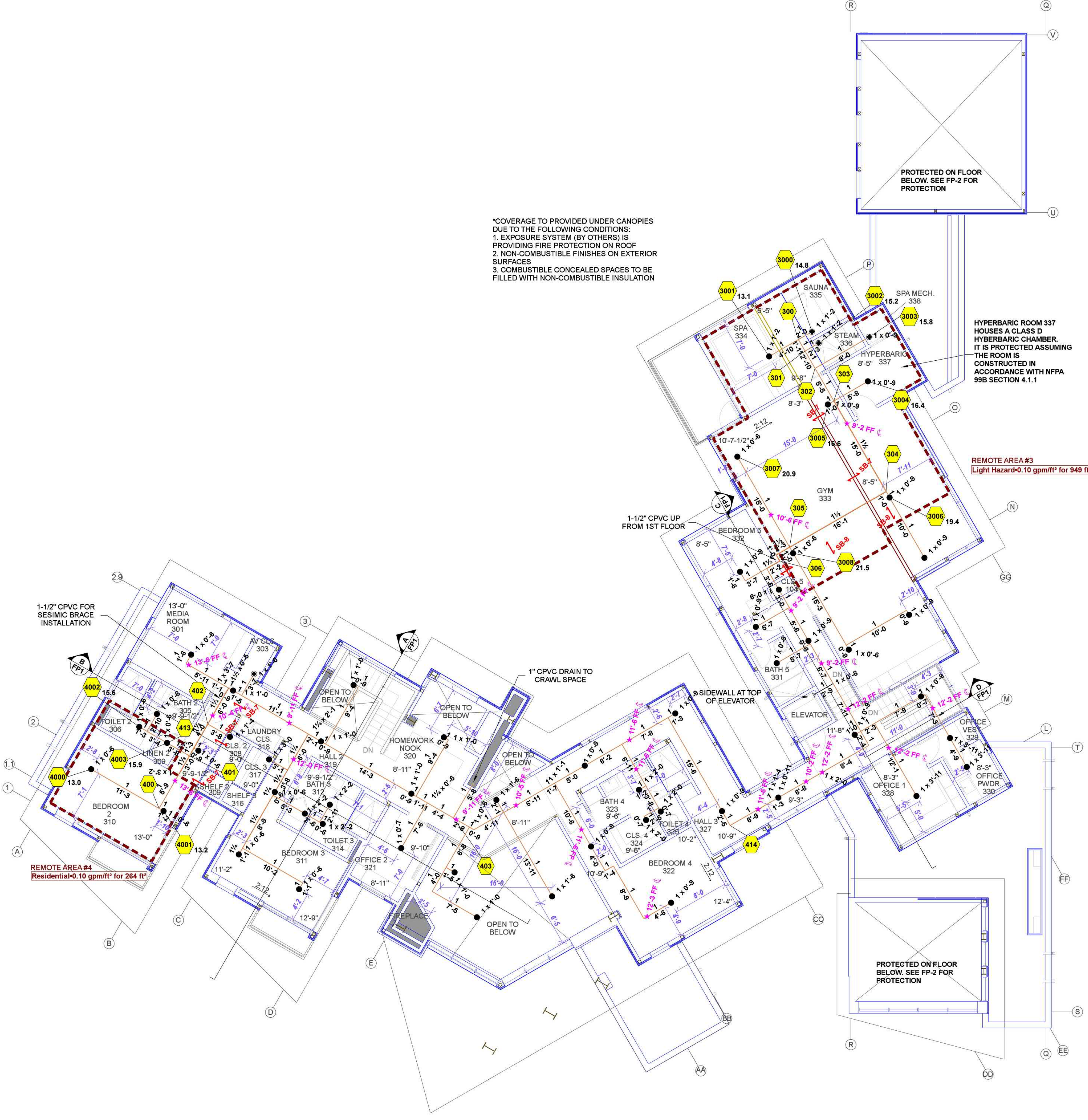


SPRINKLER HEAT ZONES:			
HEAT SOURCE:	ORDINARY TEMP. SPRINKLER	INTERMEDIATE TEMP. SPRINKLER	
SIDE OF OPEN OR RECESSED FIRE PLACE	36"	12"	
FRONT OF RECESSED FIRE PLACE	60"	36"	
COAL OR WOOD BURNING STOVE	42"	12"	
RANGE/OVEN, HOT AIR FLUES & UNINSULATED HEAT DUCT	18"	9"	
UNINSULATED HOT WATER PIPES & 250-499 WATT LIGHTS	12"	6"	
SIDE OF CEILING OR WALL MOUNTED HOT AIR DIFFUSERS	24"	12"	
FRONT OF WALL MOUNTED HOT AIR DIFFUSERS	36"	18"	
HOT WATER HEATER, FURNACE, LIGHT FIXTURE 0-250 WATT	6"	3"	

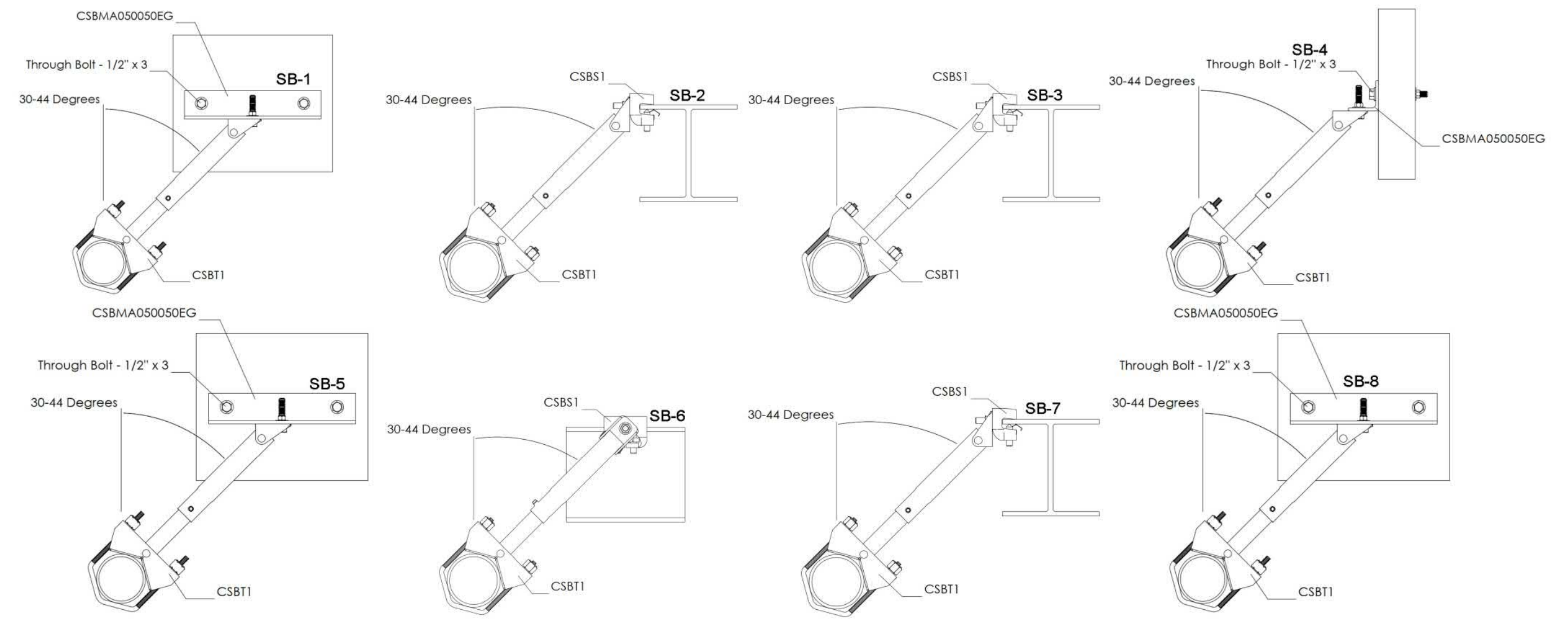
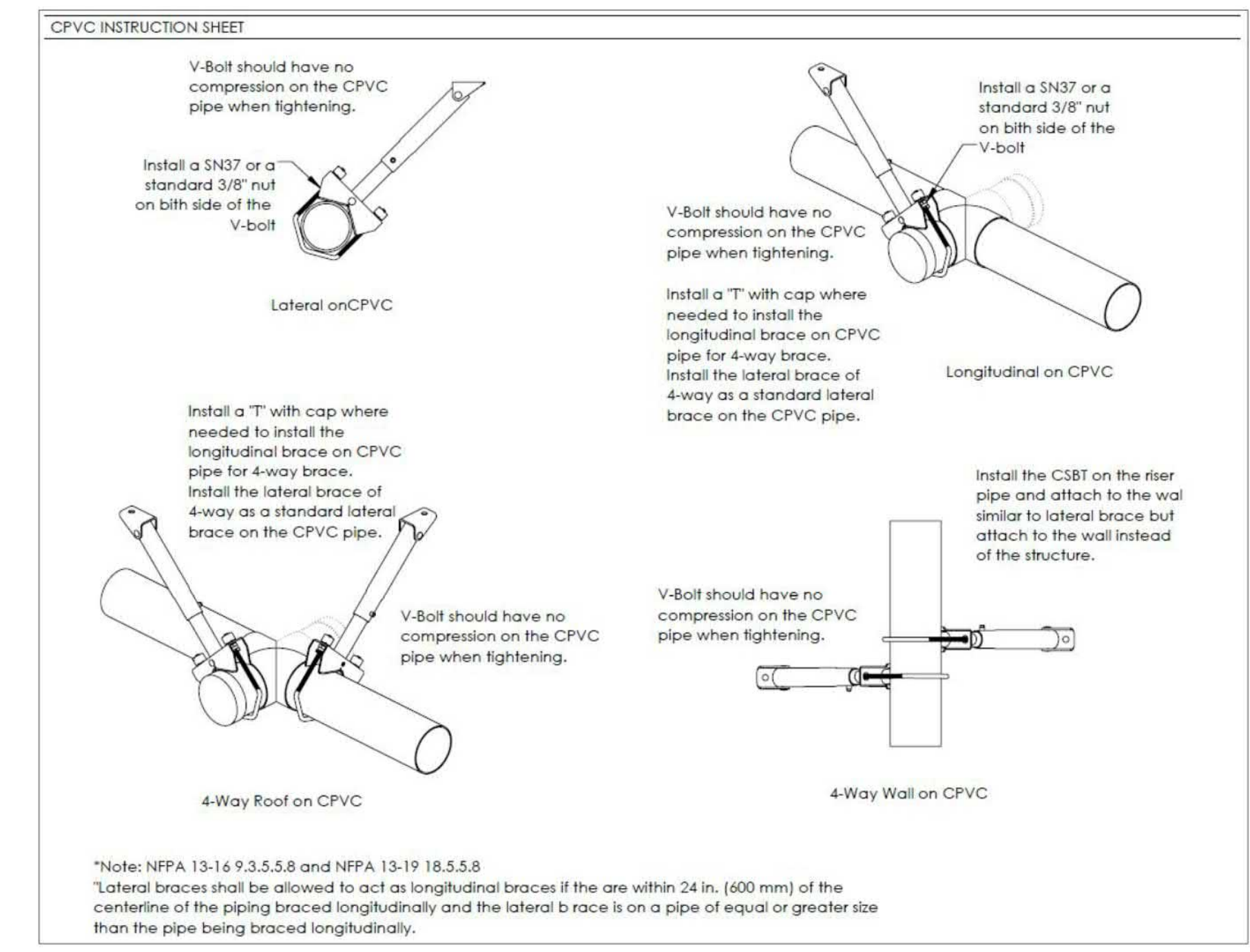
Overall Building Sprinkler Legend											
Symbol	Manufacturer	SIN	Model	Quantity	K-Factor	Type	Size	Response	Finish	Temp	Max Spacing
○	Tyco	TY1311	TY-FRB	14	5.6	Upright	1/2"	Quick	Brass	200° F	15' x 15'
●	Tyco	TY3231	TY-FRB	26	5.6	Pendent	1/2"	Quick	White	200° F	15' x 15'
○	Tyco	TY3596	LFII	89	4.9	Pendent	1/2"	Fast	White	155° F	15' x 15'
○	Tyco	TY3531	RFII	2	5.6	Pendent	1/2"	Quick	White	200° F	15' x 15'
○	Tyco	TY3282	TY-FRB	3	5.6	Pendent	1/2"	Quick	Steel	286° F	15' x 15'
○	Tyco	TY3331	TY-FRB	3	5.6	Sidewall	1/2"	Quick	Chrome	200° F	15' x 15'
				<b>Total = 137</b>							

Hydraulic Information		Hydraulic Information	
Remote Area 3		Remote Area 4	
OCCUPANCY CLASSIFICATION	Light Hazard	OCCUPANCY CLASSIFICATION	Residential
DENSITY (gpm/ft²)	0.10 for 1500ft² (Actual 948ft²)	DENSITY (gpm/ft²)	0.10 for 900ft² (Actual 264ft²)
QUICK RESPONSE REDUCTION	10'-8" Ceiling (39.0%) 915ft²	TOTAL HOSE STREAMS	100.0
TOTAL HOSE STREAMS	100.0	TOTAL HEADS FLOWING	4
TOTAL HEADS FLOWING	9	K-FACTOR	4.9
K-FACTOR	5.6	TOTAL WATER REQUIRED	157.2
TOTAL WATER REQUIRED	253.4	TOTAL PRESSURE REQUIRED	79.0
TOTAL PRESSURE REQUIRED	83.0	BASE OF RISER (gpm)	157.2
BASE OF RISER (gpm)	253.4	BASE OF RISER (psi)	79.0
BASE OF RISER (psi)	83.0	SAFETY MARGIN (psi)	+34.6 (30.5%)
SAFETY MARGIN (psi)	+30.1 (26.6%)	HYDRAULIC ZONE 4 WAS CALCULATED USING THE 4 MOST DEMANDING RESIDENTIAL SPRINKLERS IN ACCORDANCE WITH SECTION 11.3.1.1	

HYDRAULIC ZONE 3 WAS CALCULATED USING THE DENSITY / AREA METHOD. OR REDUCTION WAS USED ACCORDING TO NFPA 13, SECTION 11.2.3.2.3



\*COVERAGE TO PROVIDED UNDER CANOPIES DUE TO THE FOLLOWING CONDITIONS:  
 1. EXPOSURE SYSTEM (BY OTHERS) IS PROVIDING FIRE PROTECTION ON ROOF  
 2. NON-COMBUSTIBLE FINISHES ON EXTERIOR SURFACES  
 3. COMBUSTIBLE CONCEALED SPACES TO BE FILLED WITH NON-COMBUSTIBLE INSULATION



SEISMIC BRACE DESCRIPTIONS				
NAME	MAX SPACING	BRACE TYPE	PIPE BRACED	STRUCTURE / ORIENTATION
SB-1	40'-0"	LATERAL	2" SCH 10	T-JI PARALLEL
SB-2	40'-0"	LATERAL	2" SCH 10	I-BEAM PERPENDICULAR
SB-3	20'-0"	LATERAL	1-1/2" SCH 10	I-BEAM PERPENDICULAR
SB-4	20'-0"	LATERAL	1-1/2" SCH 10	T-JI PARALLEL
SB-5	20'-0"	LATERAL	2" SCH 10	I-BEAM PARALLEL
SB-6	20'-0"	LATERAL	2" SCH 10	I-BEAM PERPENDICULAR
SB-7	10'-0"	LATERAL	1-1/2" CPVC	T-JI PARALLEL
SB-8	10'-0"	LATERAL	1-1/2" CPVC	T-JI PERPENDICULAR

SEISMIC KEY:  
 LATERAL BRACE  
 LONGITUDINAL BRACE  
 BRANCH LINE RESTRAINT

\*BRANCH LINE RESTRAINT MAY BE OMITTED WITH CPVC HANGERS LISTED TO PROVIDE RESTRAINT PER NFPA 13 SEC. 9.3.6.1(4)

PROJECT SUMMARY	
PROJECT NAME	WHISPER HOMES RESIDENCE
PROJECT ADDRESS	887 LAKESHORE BLVD.
PARCEL NUMBER	122-181-79
PROJECT TYPE	NEW T1
TYPE OF CONSTRUCTION	V-8
OCCUPANCY GROUP(S)	R-3
OCCUPIED LEVELS	3
TOTAL SPRINKLERED AREA	12,859 SQ FT
NFPA CODE REQUIREMENT	NFPA 13 NFPA 13R NFPA 13D
NUMBER OF SYSTEMS	2
SYSTEM TYPE(S)	WET ANTIFREEZE DRY PREACTION
TOTAL SPRINKLERS	137
SPECIAL NOTES	SEE FIRE SPRINKLER NOTES THIS SHEET

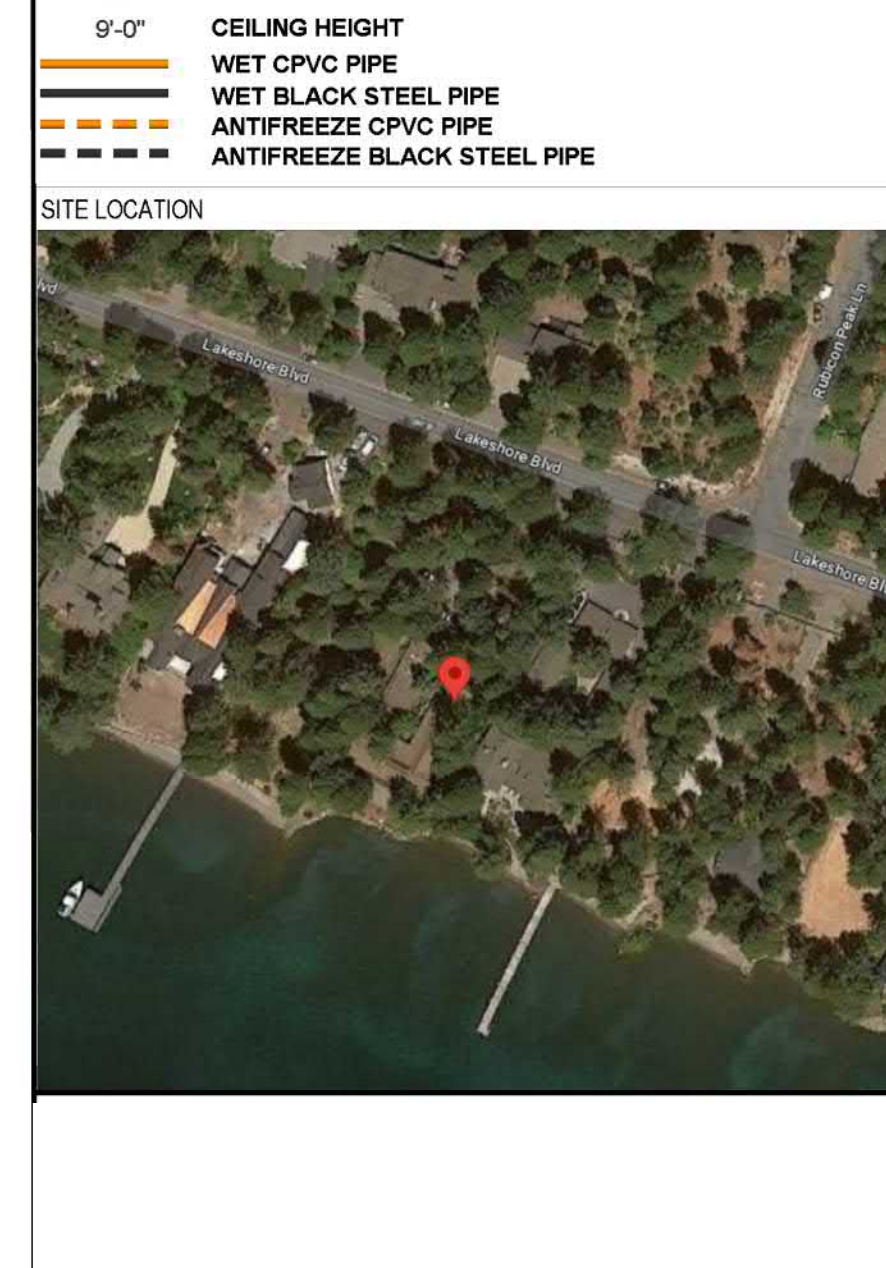
NO.	DATE	REVISION	DRAWN / CHECKED

GENERAL CONTRACTOR		AUTHORITY HAVING JURISDICTION	
ADDRESS:		FIRE PROTECTION DISTRICT	
CITY:		ADDRESS:	
PHONE:		CITY:	
CONTACT:		PHONE:	
		CONTACT:	

1. THE PROPOSED FIRE SPRINKLER SYSTEM CONSISTS OF AN ANTIFREEZE SYSTEM AND A WET SYSTEM. BOTH SHALL BE DESIGNED AND INSTALLED PER CFC & CBC (2016 NFPA 13 (2016 ED) AND THE AHJ
2. THIS SPRINKLER SYSTEM IS HYDRAULICALLY CALCULATED IN ACCORDANCE WITH NFPA 13
3. DESIGN CRITERIA
  - LIGHT HAZARD AREAS DESIGN TO 0.10 GPM/S.F. OVER THE MOST DEMANDING 1500 SQ. FT.
  - REMOTE AREA REDUCTIONS TAKEN WHERE ALLOWED IN OHJ AND LIGHT HAZARD ONLY
  - ORDINARY HAZARD GROUP I AREAS DESIGN TO 0.15 GPM/S.F. OVER THE MOST DEMANDING 1500 SQ. FT.
4. ALL EXPOSED PIPING TO BE BLACK STEEL. ALL CONCEALED PIPING TO BE 1" STEEL PIPE TO BE THREADED SCHEDULE 40 PIPE WITH DUCTILE IRON THREADED FITTINGS
5. 1" STEEL PIPE TO BE THREADED SCHEDULE 40 PIPE WITH DUCTILE IRON THREADED FITTINGS
6. 1-1/4" THROUGH 6" STEEL PIPE TO BE ACCORDUE 10 PIPE WITH ROLL GROOVED SHORT RADIUS FITTINGS AND WELDED OUTLETS
7. ALL HANGERS SHALL BE INSTALLED IN ACCORDANCE WITH NFPA 13 REQUIREMENTS
8. HOLES THROUGH SOLID STRUCTURAL MEMBERS SHALL BE PERMITTED TO SERVE AS HANGERS FOR THE SUPPORT OF SYSTEM PIPING
9. ALL SYSTEM PIPING SHALL BE TESTED FOR LEAKAGE PER NFPA 25 REQUIREMENTS
10. THE OWNER SHALL BE RESPONSIBLE FOR MAINTAINING A MINIMUM TEMPERATURE OF 40° FAHRENHEIT TO PROTECT FROM FREEZING
11. ALL DIMENSIONS ARE SHOWN CENTER TO CENTER U.O.

SYM	QTY	TYPE	MFG	MODEL #	NPT	K	TEMP	FINISH	S.I.N.
●	3	PENDENT TYCO	TY-FRB	1/2"	5.6	286	STEEL	TY3282	
○	83	PENDENT TYCO	LFII	1/2"	4.9	155	WHITE	TY3596	
○	1	PENDENT TYCO	TY-FRB	1/2"	5.6	286	WHITE	TY3231	
>	1	SIDEWALL TYCO	TY-FRB	1/2"	5.6	286	CHROME	TY3331	

- 58 TOTAL SPRINKLERS ON THIS SHEET
- FIRE SPRINKLER SYMBOLS
- ★ x FF ○ PIPE ELEVATION ABOVE FINISH FLOOR
  - ★ x TS ○ PIPE ELEVATION BELOW TOP OF STEEL
  - ROOM HAZARD CLASSIFICATION (ALL ROOMS ARE CONSIDERED LIGHT HAZARD U.O.)
  - HYDRAULIC CALCULATION JUNCTION POINT
  - 9'-0" CEILING HEIGHT
  - WET CPVC PIPE
  - WET BLACK STEEL PIPE
  - ANTIFREEZE CPVC PIPE
  - ANTIFREEZE BLACK STEEL PIPE



PROJECT NAME	FIRE SPRINKLER PLANS FOR WHISPER HOMES RESIDENCE	
	887 LAKESHORE BLVD. INCLINE VILLAGE, NV 89451	

DRAWING TITLE	FIRE SPRINKLER PLAN	
SCALE:	1/8" = 1'-0"	JOB NO: 22-1098
DRAWN BY:		DWG NO:
BORN ON DATE:	2-29-2024	FP-3
FILE:	2-29-2024	SHEET 3 OF 3

SECOND LEVEL FIRE SPRINKLER PLAN  
 SCALE: 1/8" = 1'-0"