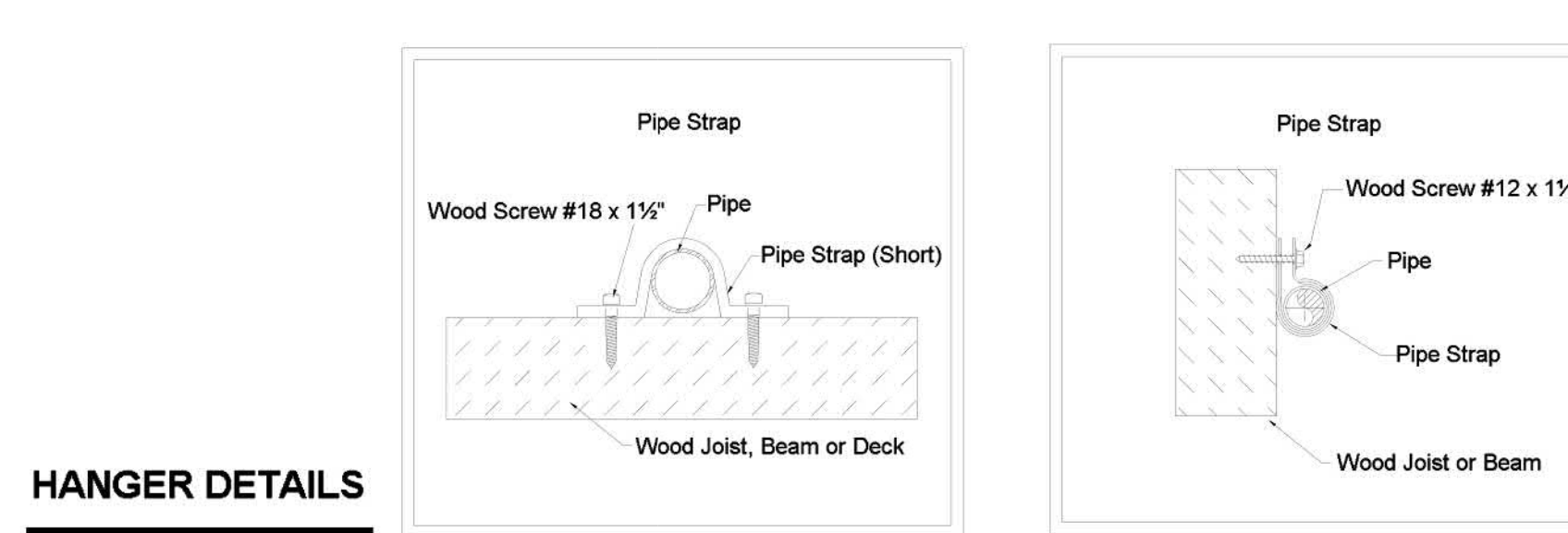


Symbol	Manufacturer	SIN	Model	Quantity	K-Factor	Type	Size	Response	Finish	Temperature	Note
●	Victaulic	V2740	FL-RES	807	4.9	Pendent	1/2"	Fast	White Polyester	155°F	RECESSED
○	Victaulic	V5606	FL-QR/C	305	5.6	Concealed Pendent	1/2"	Quick	Brass	155°F	RECESSED
●	Victaulic	V3610	FL-QR/DRY/SW	57	5.6	Horizontal Sidewall	1"	Quick	Brass	200°F	N/A
○	Victaulic	V2740	FL-RES	144	4.9	Pendent	1/2"	Fast	White Polyester	175°F	RECESSED
○	Victaulic	V2704	FL-QR	55	5.6	Upright	1/2"	Quick	Brass	200°F	N/A
○	Tyco	TY2190	AP	61	4.2	Upright	1/2"	Quick	Brass	200°F	N/A
○	Victaulic	V2710	FL-QR/SW	17	5.6	Horizontal Sidewall	1/2"	Quick	Brass	155°F	N/A
○	Victaulic	V3416	FL-ECHL/SW	2	8	Horizontal Sidewall	1/2"	Quick	White	200°F	N/A
○	Victaulic	V2704	FL-QR	2	5.6	Upright	1/2"	Quick	Brass	200°F	N/A
				Total = 1450							

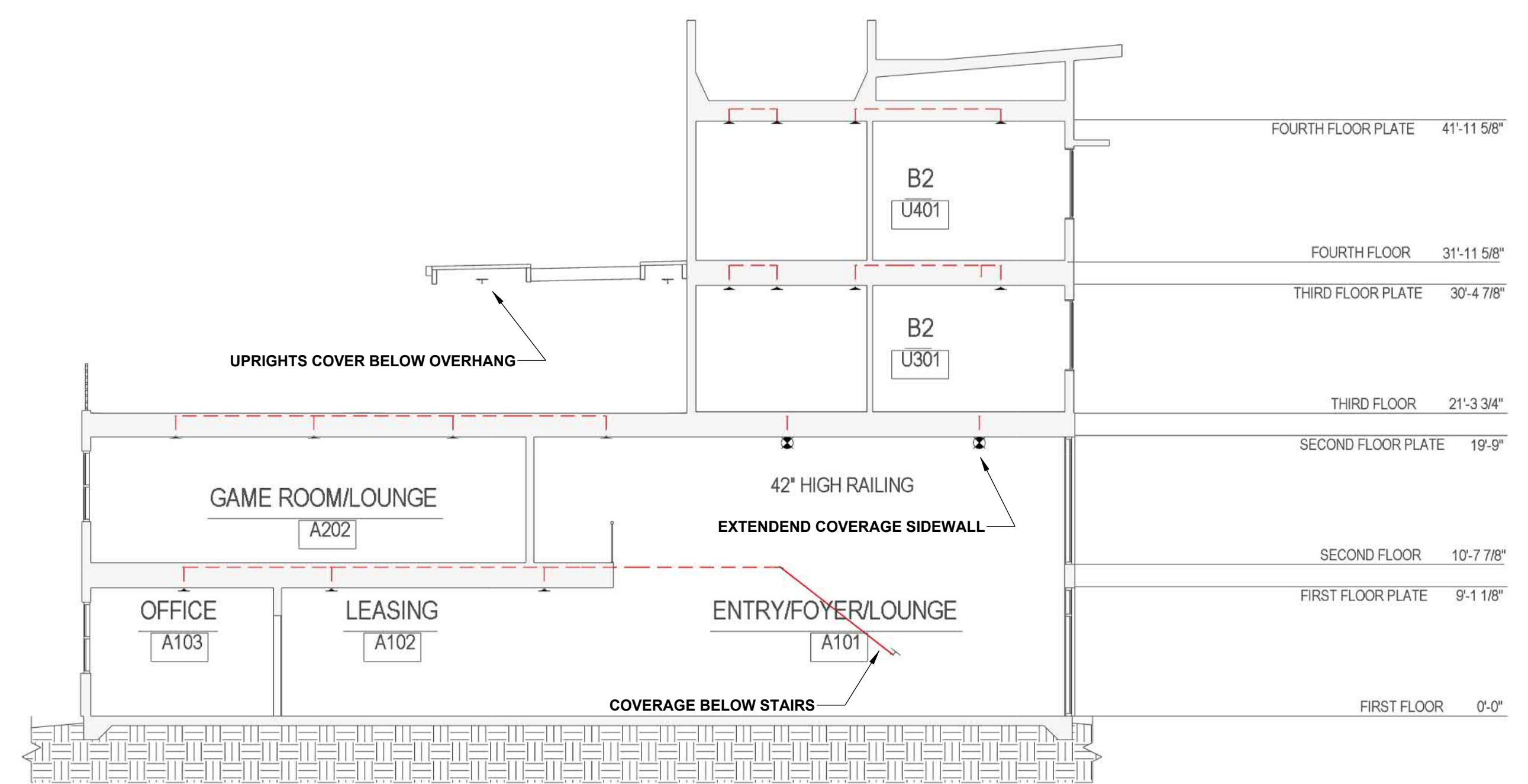


	3/4"	1"	1 1/4"	1 1/2"	2"	2 1/2"	3"	4"	6"	8"
STEEL PIPE EXCEPT THREADED LIGHTWALL	NA	12-0	12-0	15-0	15-0	15-0	15-0	15-0	15-0	15-0
THREADED LIGHTWALL STEEL PIPE	NA	12-0	12-0	12-0	12-0	NA	NA	NA	NA	NA
BLAZEMASTER CPVC	5-6	6-0	6-6	7-0	8-0	9-0	10-0	NA	NA	NA

- ### GENERAL INFORMATION
- CALIFORNIA BUILDING CODE (2019)
 - OCCUPANCY TYPE R-2, A-2, A-3, U
 - TYPE OF CONSTRUCTION: NA
 - SPRINKLERED AREAS (APPROXIMATE - SEE ARCHITECTURAL PLANS FOR ACTUAL)
 - FIRST FLOOR = 39,852 S.F.
 - SECOND FLOOR = 37,936 S.F.
 - THIRD FLOOR = 36,980 S.F.
 - FOURTH FLOOR = 36,714 S.F.
 - TOTAL = 151,542 S.F.
 - DESIGN & INSTALLATION STANDARDS: NFPA-13 (2016), NFPA-14 (2016), NFPA-20 (2016)
 - SPRINKLER PIPE TYPES:
 - WET-
 - 2.1 ALL WELDED PIPING 4" AND SMALLER TO BE SCH 7 TYP. U.N.O.
 - 2.2 ALL THREADED PIPING TO BE SCH 90 TYP. U.N.O.
 - 2.3 ALL CPVC PIPING TO BE "TYCO" BLAZEMASTER
 - 2.4 MAINS & BRANCH LINES TO BE ROLL-GROOVED BLK SCHEDULE 10
 - 2.5 2" AND LARGER TO USE GROOVED SHORT RADIUS FITTINGS
 - DRY-
 - 2.5 1" PIPE TO BE SCHEDULE 40 BLACK STEEL w/ THREADED FITTINGS
 - 2.6 1-1/4" THROUGH 2-1/2" MAINS & BRANCH LINES TO BE BLK SCHEDULE 10 w/ GROOVED FITTINGS
 - 2.7 MAINS & BRANCH LINES TO BE ROLL-GROOVED BLK SCHEDULE 10
 - 2.8 2" AND LARGER TO USE GROOVED SHORT RADIUS FITTINGS
 - DESIGN CRITERIA:
 - LIGHT HAZARD AREAS INCLUDE OFFICE/ADMINISTRATIVE, RESTROOMS, AND CORRIDORS
 - RESIDENTIAL AREAS INCLUDE APARTMENT UNITS
 - ORDINARY HAZARD GROUP I AREAS INCLUDE MECHANICAL AND ELECTRICAL ROOMS
 - ORDINARY HAZARD GROUP II AREAS INCLUDE STORAGE ROOMS
 - REMOTE AREA REDUCTIONS HAVE BEEN TAKEN WHERE APPLICABLE PER NFPA 13 SEC. 11.2.3.2.3
 - NOTES:
 - ALL MATERIAL TO BE NEW AND MEET U.L. STANDARDS
 - HANGERS TO BE INSTALLED IN ACCORDANCE WITH NFPA 13 - SEE PLAN FOR HANGING
 - DRY SYSTEM PIPE SLOPE INSTALLATION:
 - SPRINKLER MAINS TO BE 1/4" PER 10'-0"
 - SPRINKLER BRANCH LINES TO BE 1/2" PER 10'-0"
 - DRY SYSTEM CAPACITY: 151 GALLONS
 - SYMBOLS USED ON DRAWINGS:
 - *x/FF: PIPE ELEVATION ABOVE FINISH FLOOR
 - *x/TS: PIPE ELEVATION BELOW TOP OF STEEL
 - [OH]: ROOM HAZARD CLASSIFICATION (ALL ROOMS ARE CONSIDERED LIGHT HAZARD U.N.O.)
 - : HYDRAULIC CALCULATION JUNCTION POINT
 - 9'-0": CEILING HEIGHT
 - : WET BLACK STEEL PIPE
 - : WET CPVC PIPE
 - : DRY BLACK STEEL PIPE
 - SCOPE OF WORK:
 - INSTALL A COMPLETE SINGLE ZONE WET FIRE SPRINKLER SYSTEM TO COVER ALL AREAS OF BUILDING ZONED PER FLOOR WITH MANUAL STANDPIPES.
 - ALL AREAS OF THE BUILDING TO BE INSTALLED AND COVERED IN ACCORDANCE WITH THE LOCAL AUTHORITY HAVING JURISDICTION AND PER NFPA 13



B BUILDING SECTION
SCALE: 1/8" = 1'-0"



C BUILDING SECTION
SCALE: 1/8" = 1'-0"

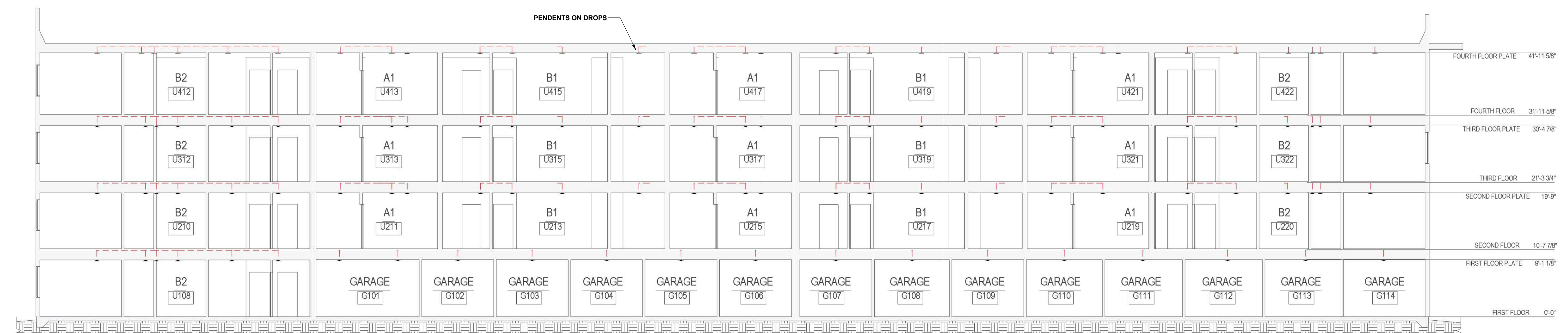
NAME	MAX SPACING	BRACE TYPE	PIPE BRACED	STRUCTURE	ORIENTATION
SB-1	40'-0"	LATERAL	6" SCH 7	WOOD TRUSS	PARALLEL
SB-2	40'-0"	LATERAL	6" SCH 7	WOOD TRUSS	PERPENDICULAR
SB-3	80'-0"	LONGITUDINAL	6" SCH 7	WOOD TRUSS	PARALLEL
SB-4	80'-0"	LONGITUDINAL	6" SCH 7	WOOD TRUSS	PERPENDICULAR
SB-5	40'-0"	LONGITUDINAL	4" SCH 7	WOOD TRUSS	PARALLEL

SEISMIC BRANCH LINE RESTRAINT (Cp=0.41):
 1" PIPE = 36'-0" MAX SPACING
 1-1/4" PIPE = 36'-0" MAX SPACING
 1-1/2" PIPE = 41'-0" MAX SPACING
 2" PIPE = 45'-0" MAX SPACING

SEISMIC KEY:
 LATERAL BRACE
 LONGITUDINAL BRACE
 4-WAY BRACE

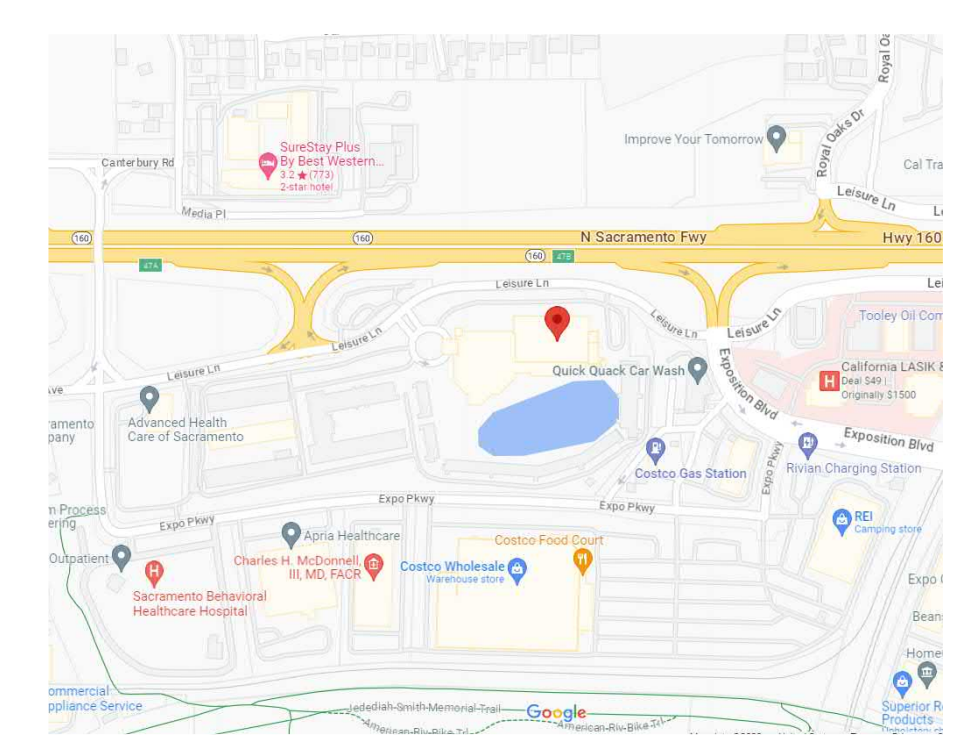
*BRANCH LINE RESTRAINT MAY BE OMITTED WITH CPVC HANGERS LISTED TO PROVIDE RESTRAINT PER NFPA 13 SEC. 9.3.6.1(4)

SEISMIC DETAILS



A BUILDING SECTION
SCALE: 1/8" = 1'-0"

AIR VENT NOTE:
 AS STATED IN A.8.16.6: AT THE DISCRETION OF THE INSTALLER, AUTOMATIC AIR VENTS ARE TO BE INSTALLED BY ONE OF THE FOLLOWING METHODS:
 (1) MANUAL VALVE, MIN 1/2"
 (2) AUTOMATIC AIR VENT
 (3) OTHER APPROVED MEANS



VICINITY MAP
SCALE: N.T.S.

SYMBOL LEGEND

- *x/FF: PIPE ELEVATION ABOVE FINISH FLOOR
- *x/TS: PIPE ELEVATION BELOW TOP OF STEEL
- [OH]: ROOM HAZARD CLASSIFICATION (ALL ROOMS ARE CONSIDERED LIGHT HAZARD OR RESIDENTIAL U.N.O.)
- : HYDRAULIC CALCULATION JUNCTION POINT
- 9'-0": CEILING HEIGHT
- : WET BLACK STEEL PIPE
- : WET CPVC PIPE
- : DRY BLACK STEEL PIPE

SITE & UNDERGROUND PLAN

REVISIONS

NORTH

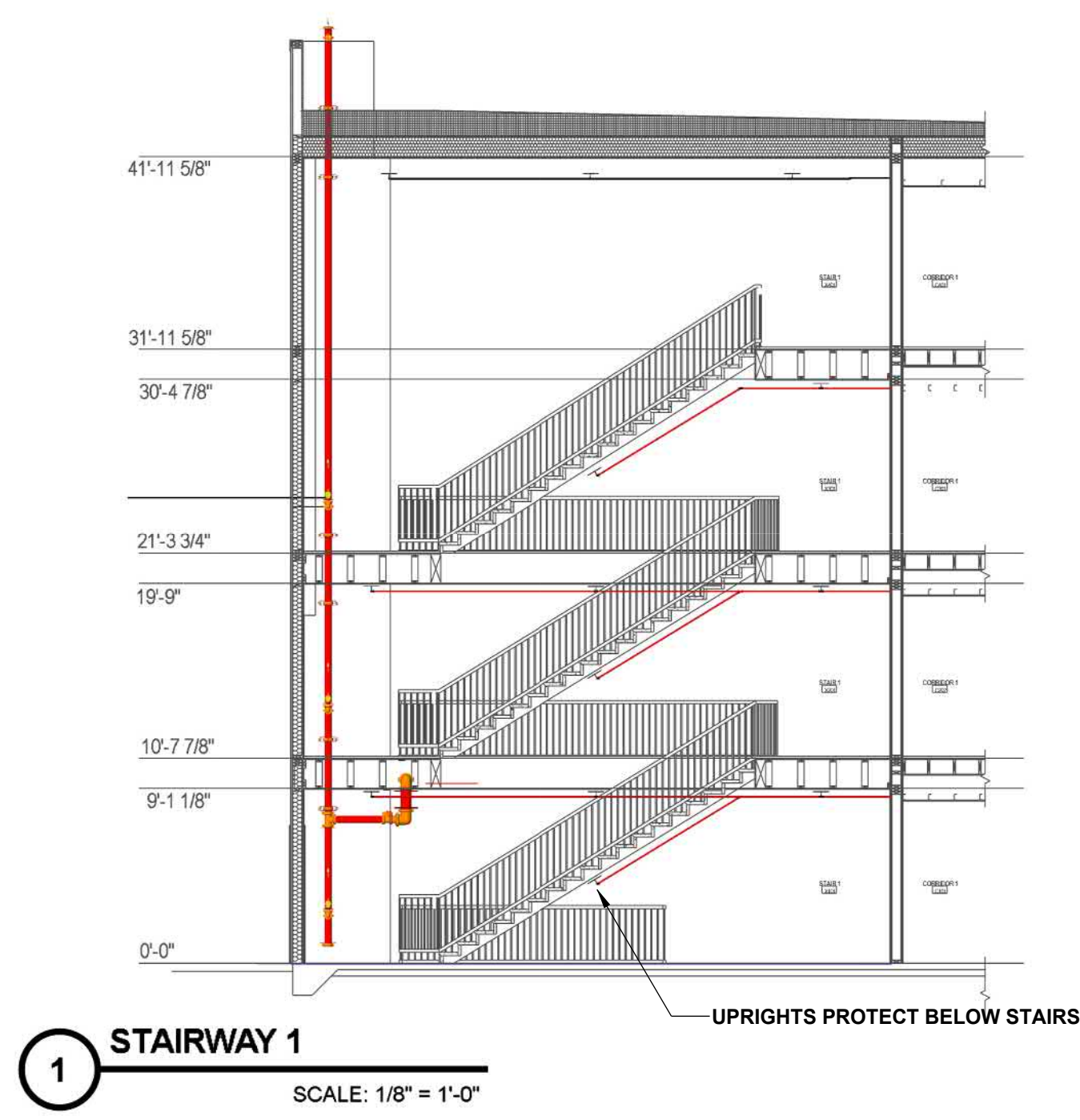
WATER SUPPLY & SYSTEM DESIGN DATA
 WATER SUPPLY PRESSURE: 43 PSI
 RESIDUAL PRESSURE: 39 PSI
 GPM FLOWING: 2400 GPM
 ABOVE INFORMATION OBTAINED FROM:
 RESIDENTIAL LIGHT & ORDINARY HAZARD AREA OF APPLICATION SEE CALCS. SO FT. TOTAL SYSTEM REQUIREMENTS. * (SEE CALCS) GPM HOSE (SEE CALCS) GPM AT (SEE CALCS) PSI AT BASE OF RISER

PROJECT: LEISURE LANE APARTMENTS
500 LEISURE LANE
SACRAMENTO, CA 95815

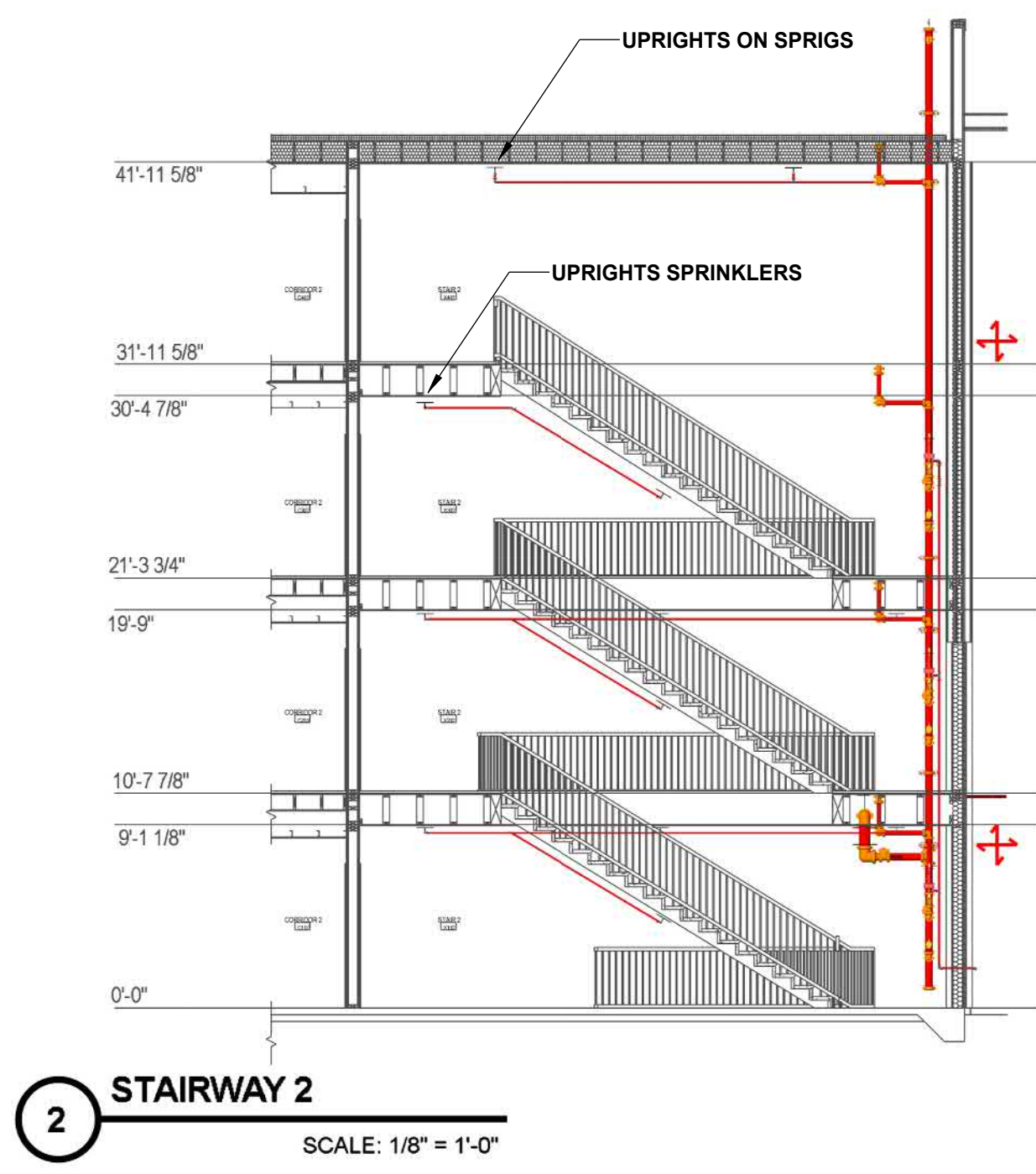
CONTRACTOR:

DATE: 09/06/23
 JOB NO: 23-0139-02
 SCALE: AS SHOWN
 DRAWN BY: M.S.
 CHECK BY: S.H.

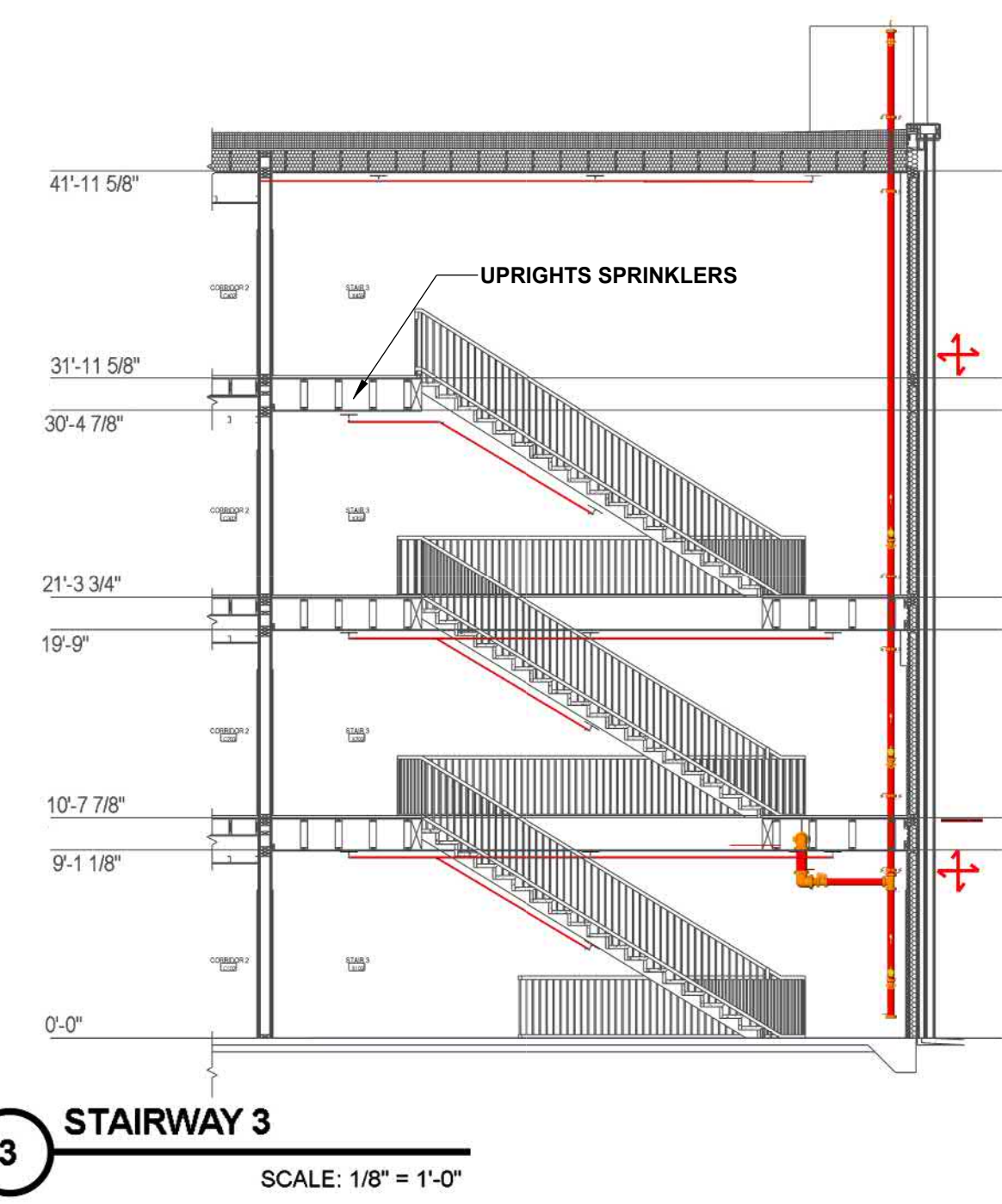
SHEET: FP-01
 PLOT DATE: 09-06-23 OF 24



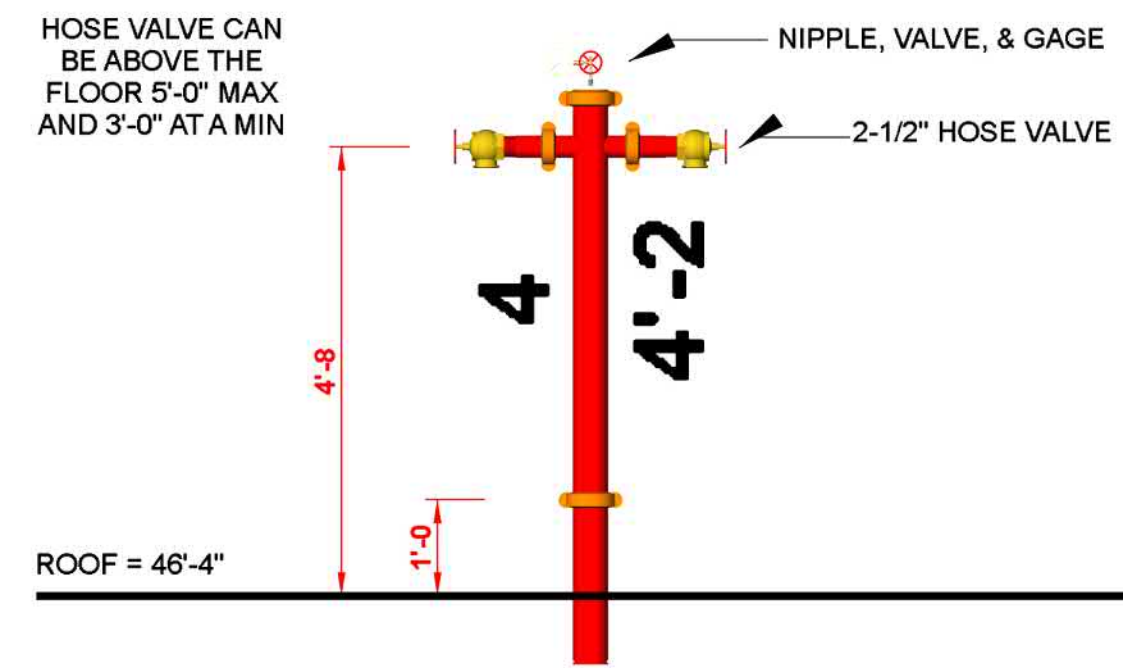
1 STAIRWAY 1
SCALE: 1/8" = 1'-0"



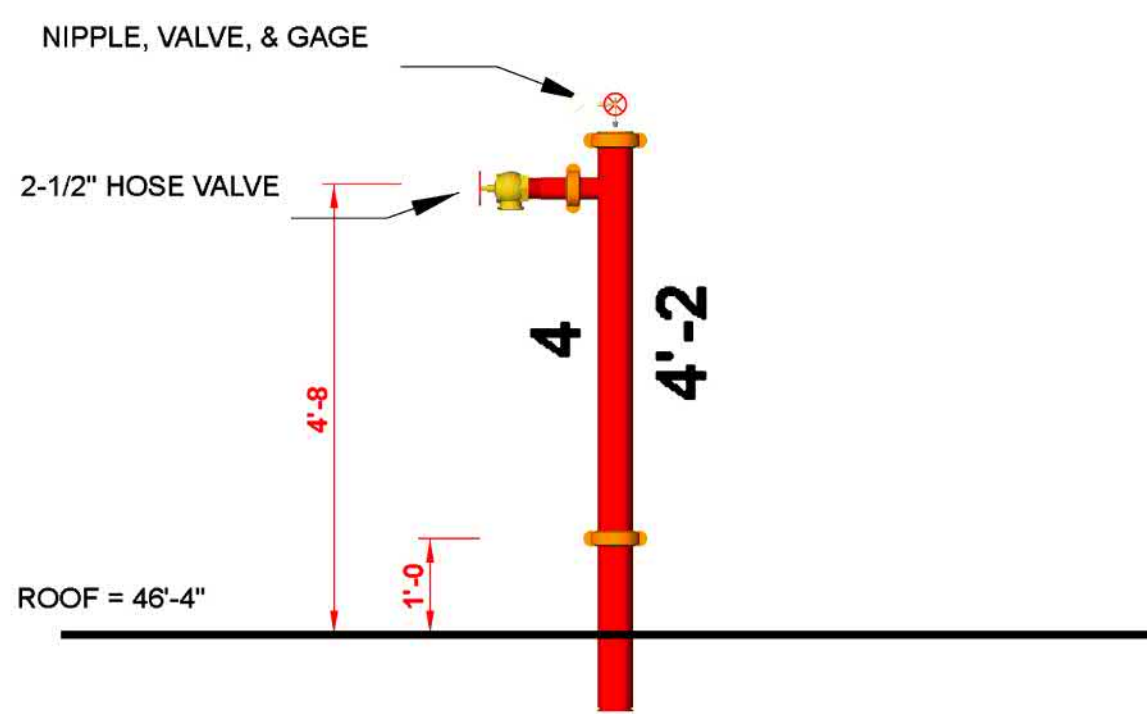
2 STAIRWAY 2
SCALE: 1/8" = 1'-0"



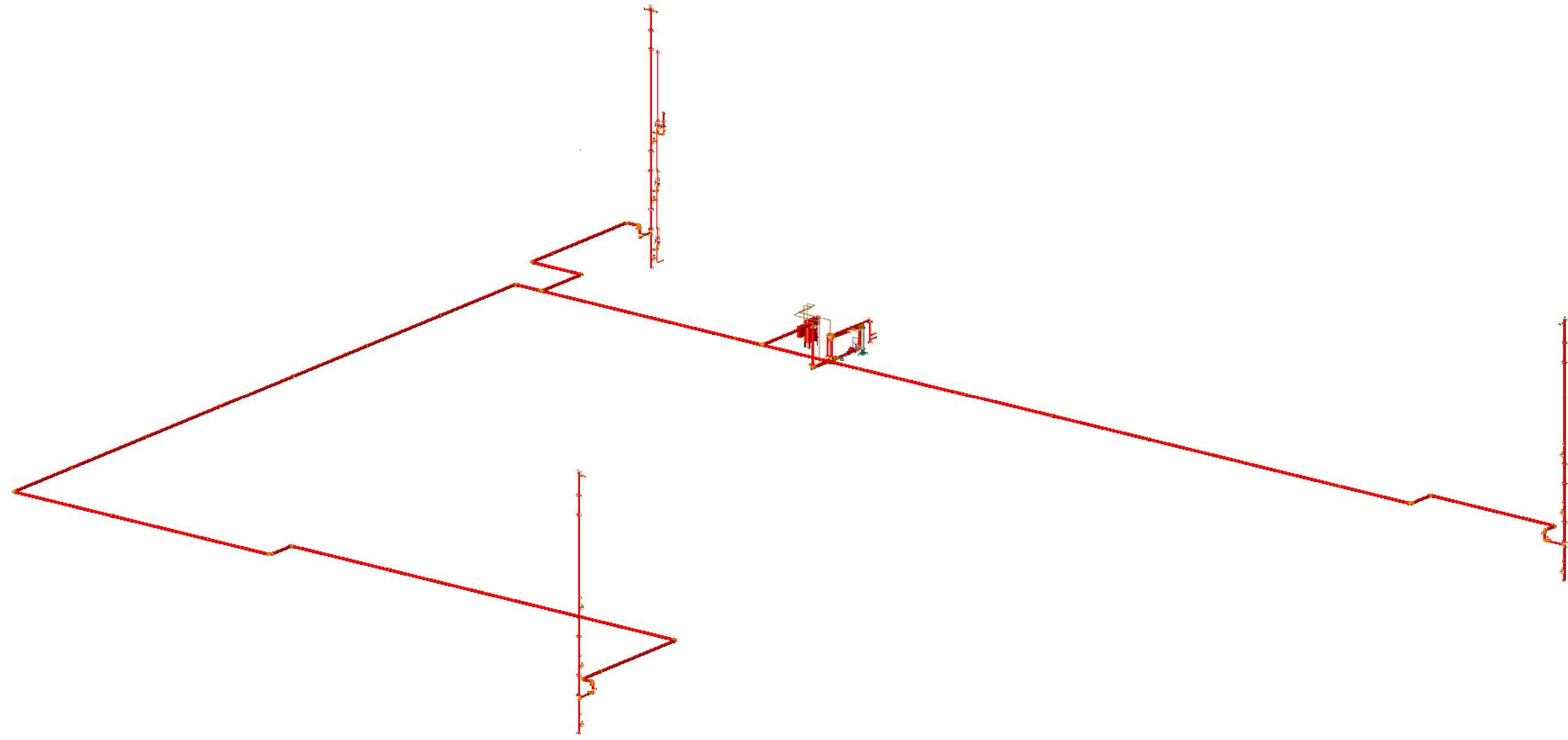
3 STAIRWAY 3
SCALE: 1/8" = 1'-0"



7 TOP OF TEST STANDPIPE DETAIL
SCALE: 1/2" = 1'-0"

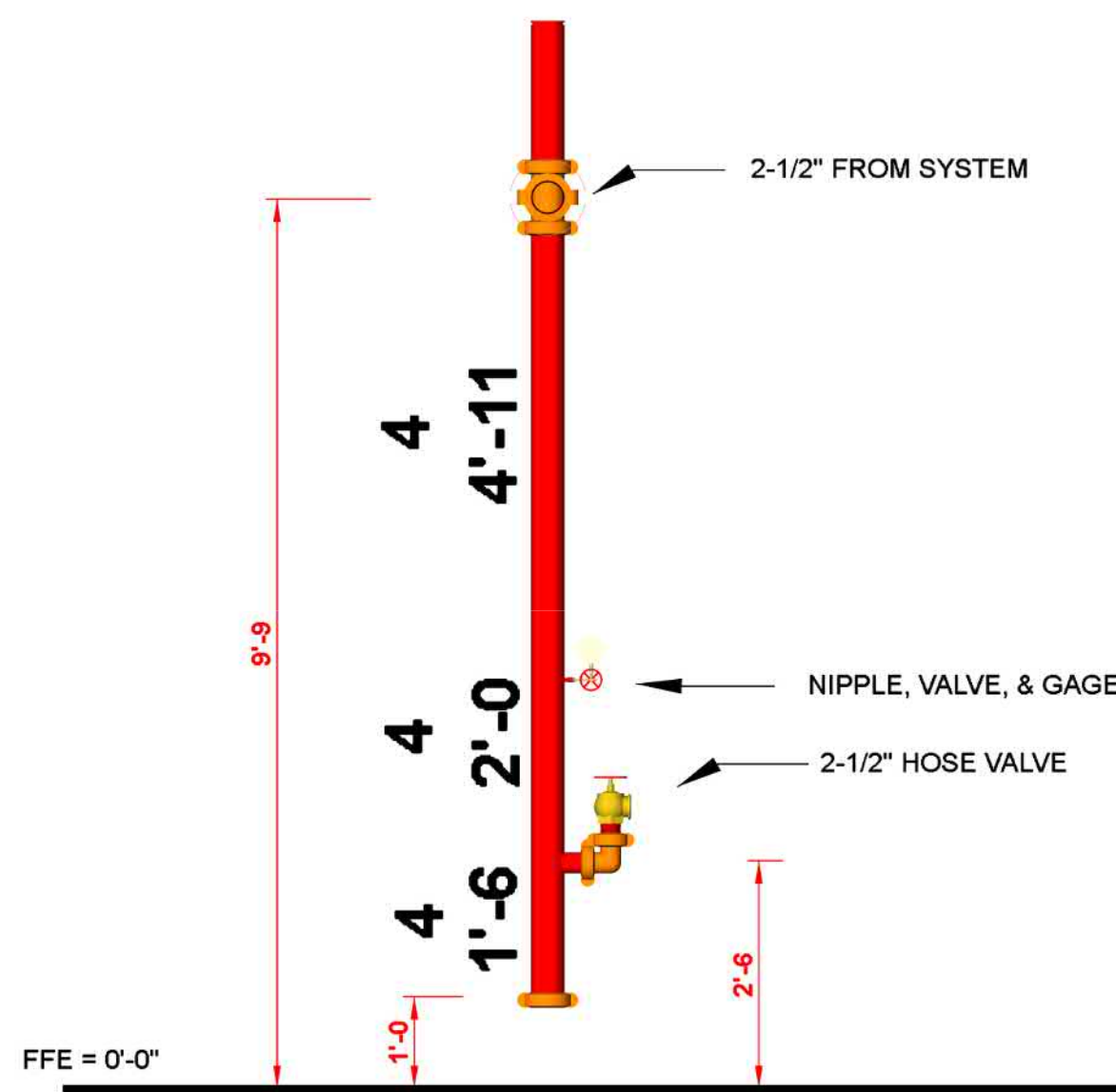


6 TOP OF TYP. STANDPIPE DETAIL
SCALE: 1/2" = 1'-0"

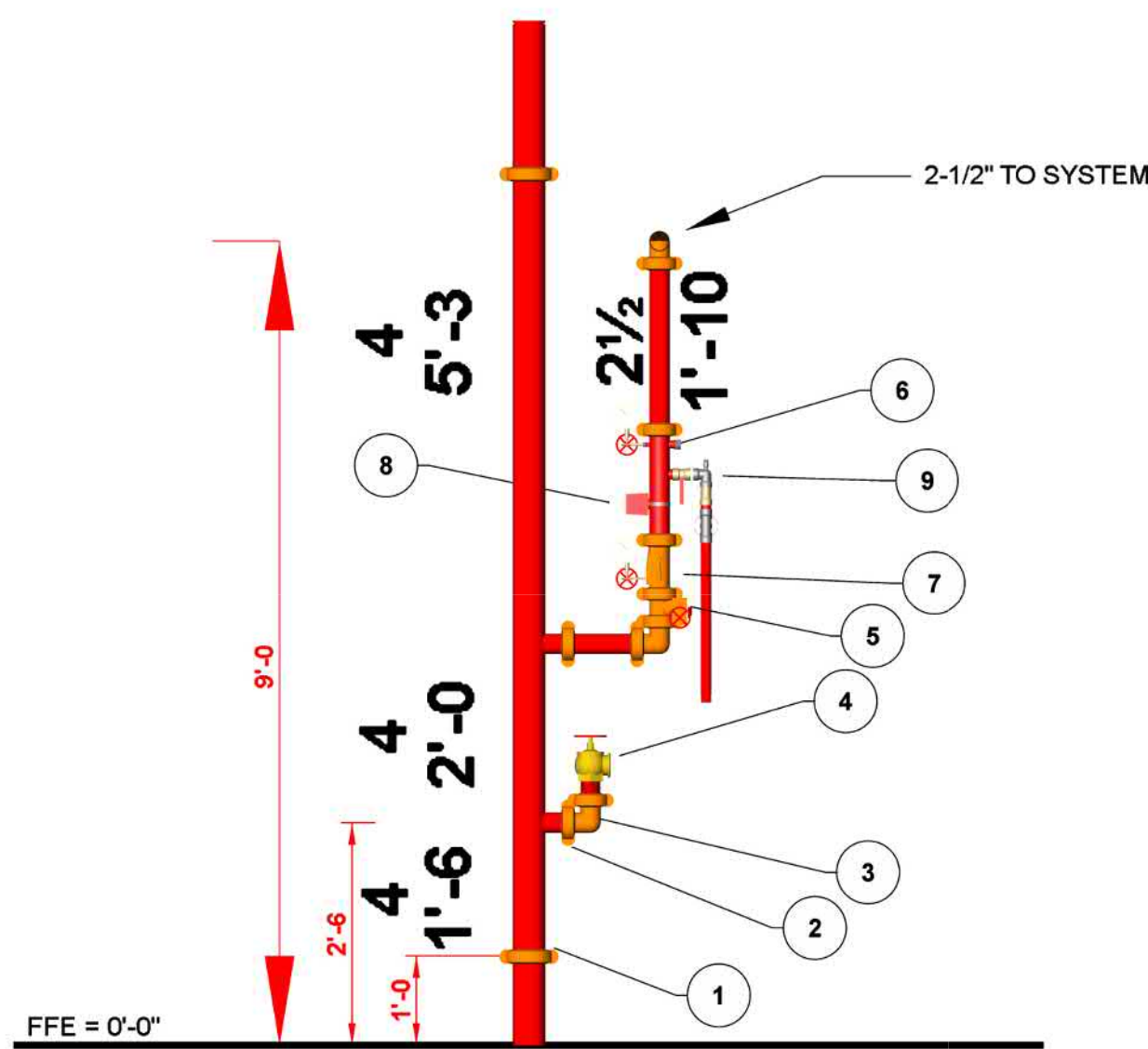


ISOMETRIC STANDPIPE PLAN

SCALE: N.T.S.

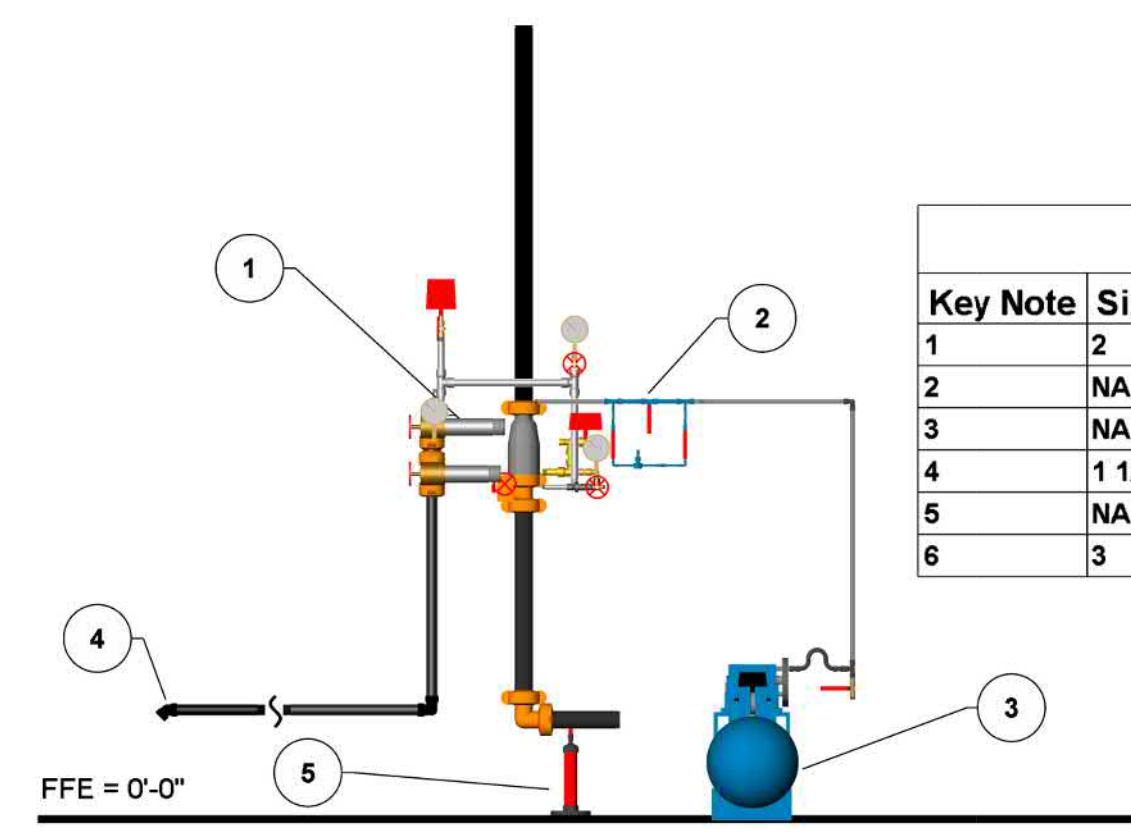


5 TYP. STANDPIPE DETAIL
SCALE: 1/2" = 1'-0"



4 TYP. STANDPIPE & RISER DETAIL
SCALE: 1/2" = 1'-0"

Parts Legend			
Key Note	Size	Description	Quantity
1	2-1/2"	Grooved Rigid Coupling Org	2
2	4"	Grooved Rigid Coupling Org	9
3	2-1/2"	Grooved 90 Org	3
4	2-1/2"	Hose Valve	1
5	2-1/2"	Butterfly Valve G-G	1
6	1/4"	Valve & Gage	1
7	2 1/2"	Check Valve G-G	1
8	2 1/2"	Waterflow Detector	1
9	1 1/4"	Inspector Test & Drain	1



8 DRY VALVE DETAIL
SCALE: 1/2" = 1'-0"

Parts Legend			
Key Note	Size	Description	Quantity
1	2	VICTAULIC 768N DRY VALVE AND TRIM	1
2	NA	AIR MAINTENANCE DEVICE	4
3	NA	AIR COMPRESSOR	1
4	1 1/4"	MAIN DRAIN	1
5	NA	PIPE STAND	1
6	3	GROOVED ELBOW	1

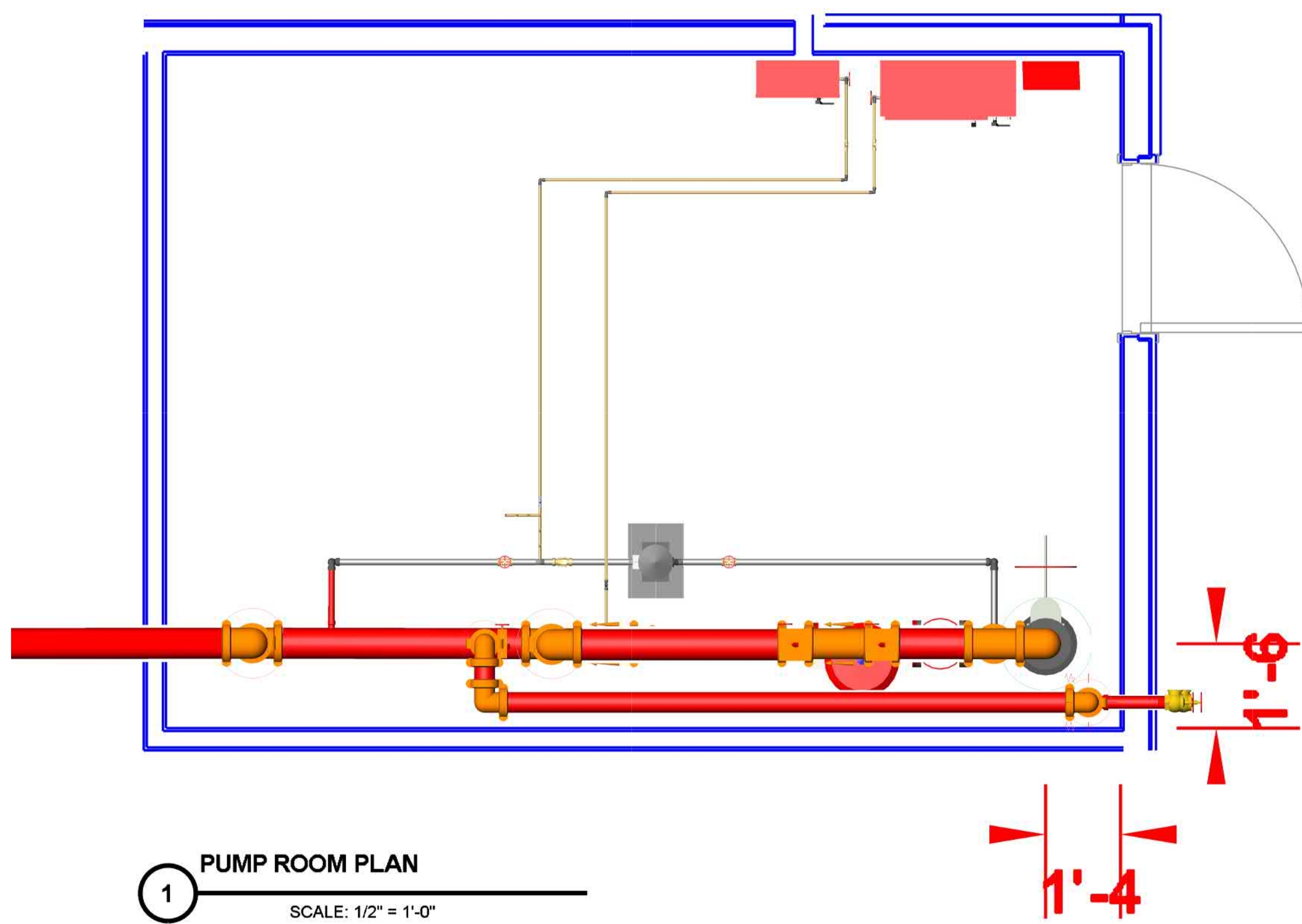
★ x-x FF ⚡ PIPE ELEVATION ABOVE FINISH FLOOR
★ x-x TS ⚡ PIPE ELEVATION BELOW TOP OF STEEL

OH1 ROOM HAZARD CLASSIFICATION (ALL ROOMS ARE CONSIDERED LIGHT HAZARD OR RESIDENTIAL U.N.O.)
XX HYDRAULIC CALCULATION JUNCTION POINT

9'-0" CEILING HEIGHT
WET BLACK STEEL PIPE

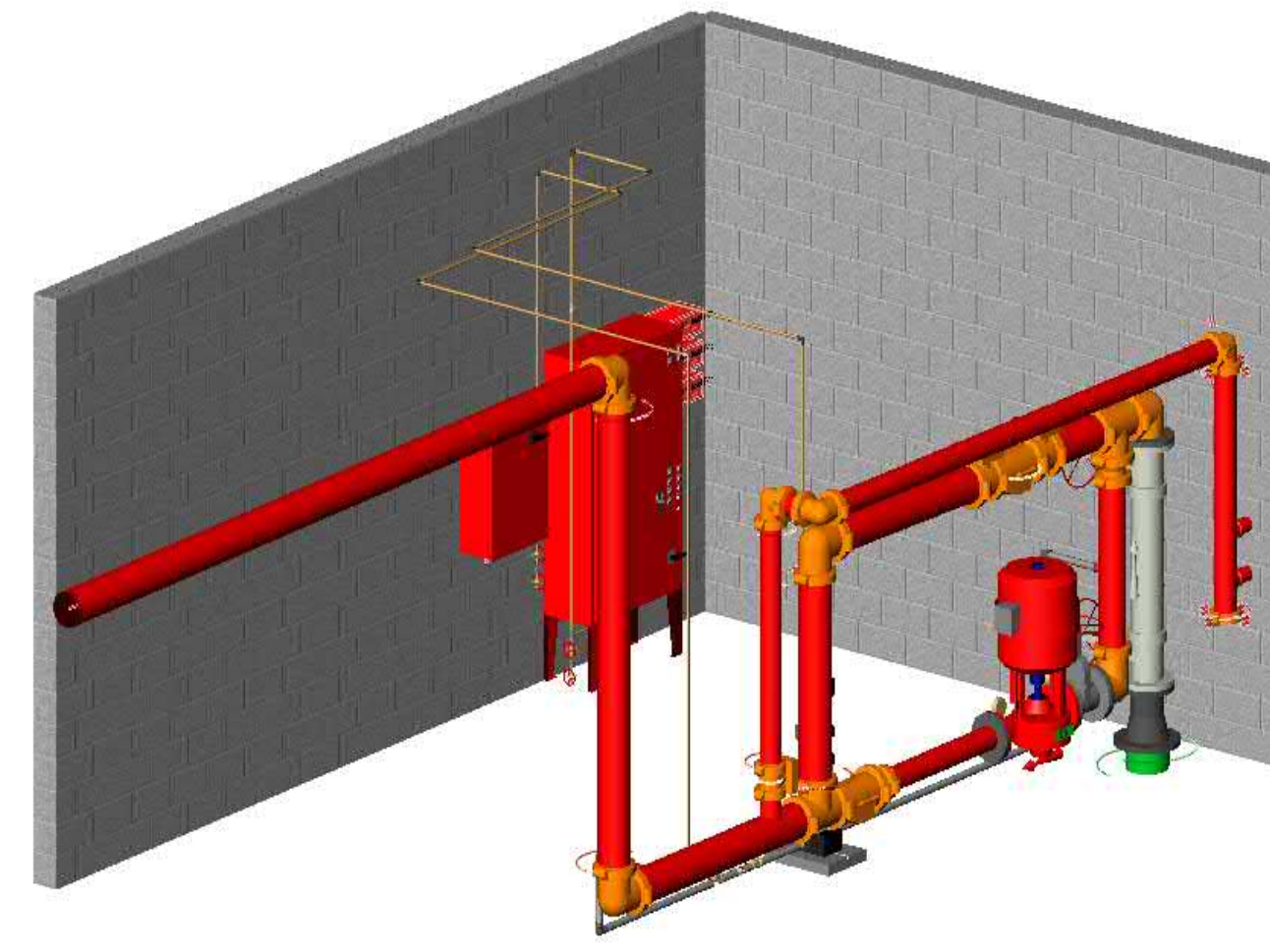
STANDPIPE PLAN & DETAILS

REVISIONS	
NORTH	
WATER SUPPLY & SYSTEM DESIGN DATA WATER SUPPLY INFORMATION: PSI RESIDUAL PRESSURE: 38 PSI GPM FLOWING: 2400 GPM ABOVE INFORMATION OBTAINED FROM: RESIDENTIAL LIGHT & ORDINARY HAZARD HAZARD CLASSIFICATION AREA OF APPLICATION: SEE CALCS. 50 FT. TOTAL SYSTEM REQUIREMENTS. * (SEE CALCS) GPM HOSE (SEE CALCS) GPM AT (SEE CALCS) PSI AT BASE OF RISER	
PROJECT	LEISURE LANE APARTMENTS 500 LEISURE LANE SACRAMENTO, CA 95815
CONTRACTOR	
DATE	09/06/23
JOB NO.	23-0139-02
SCALE	AS SHOWN
DRAWN BY	M.S.
CHECK BY	S.H.
SHEET	FP-03
PLOT DATE: 09-06-23 OF 24	

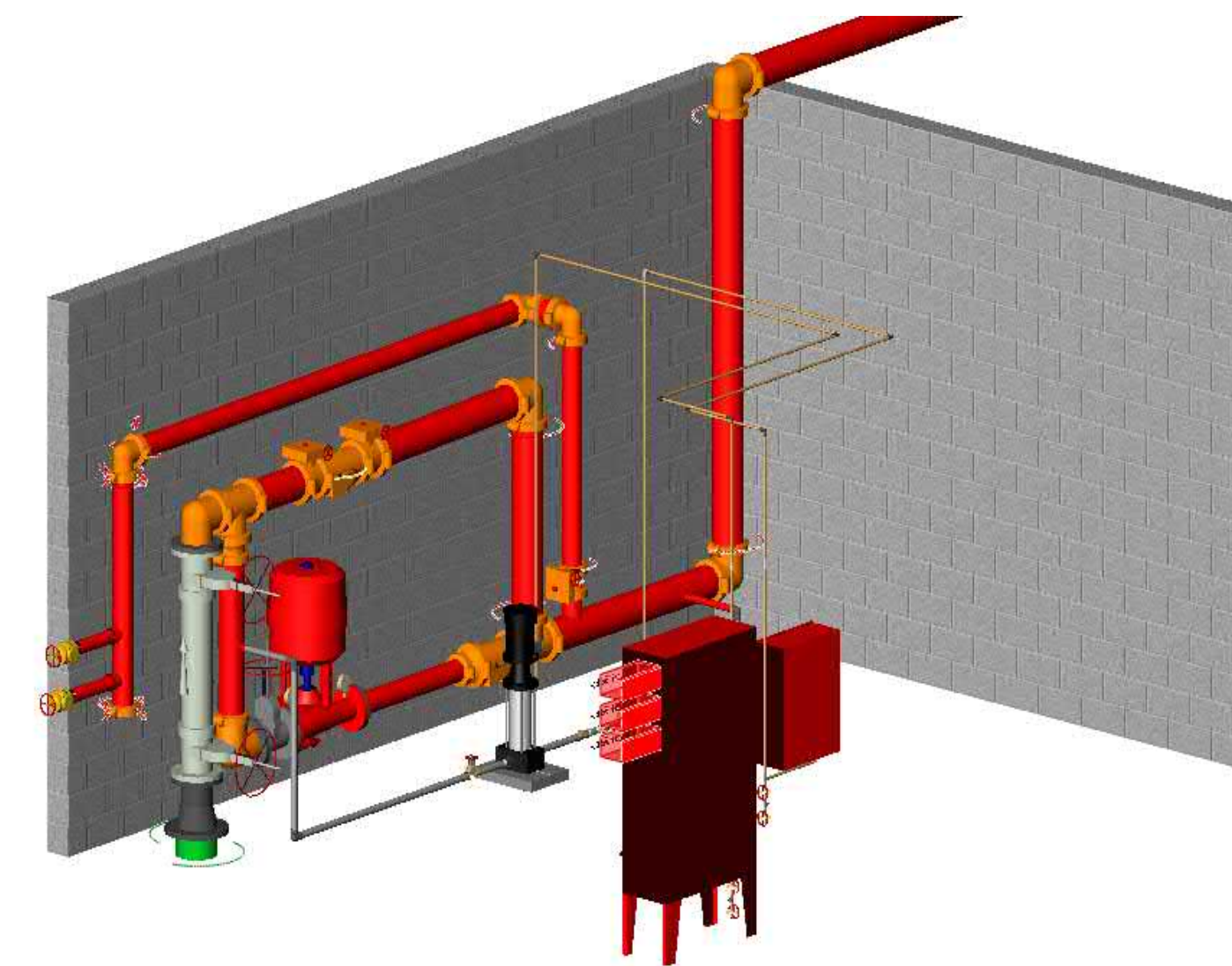


1 PUMP ROOM PLAN
SCALE: 1/2" = 1'-0"

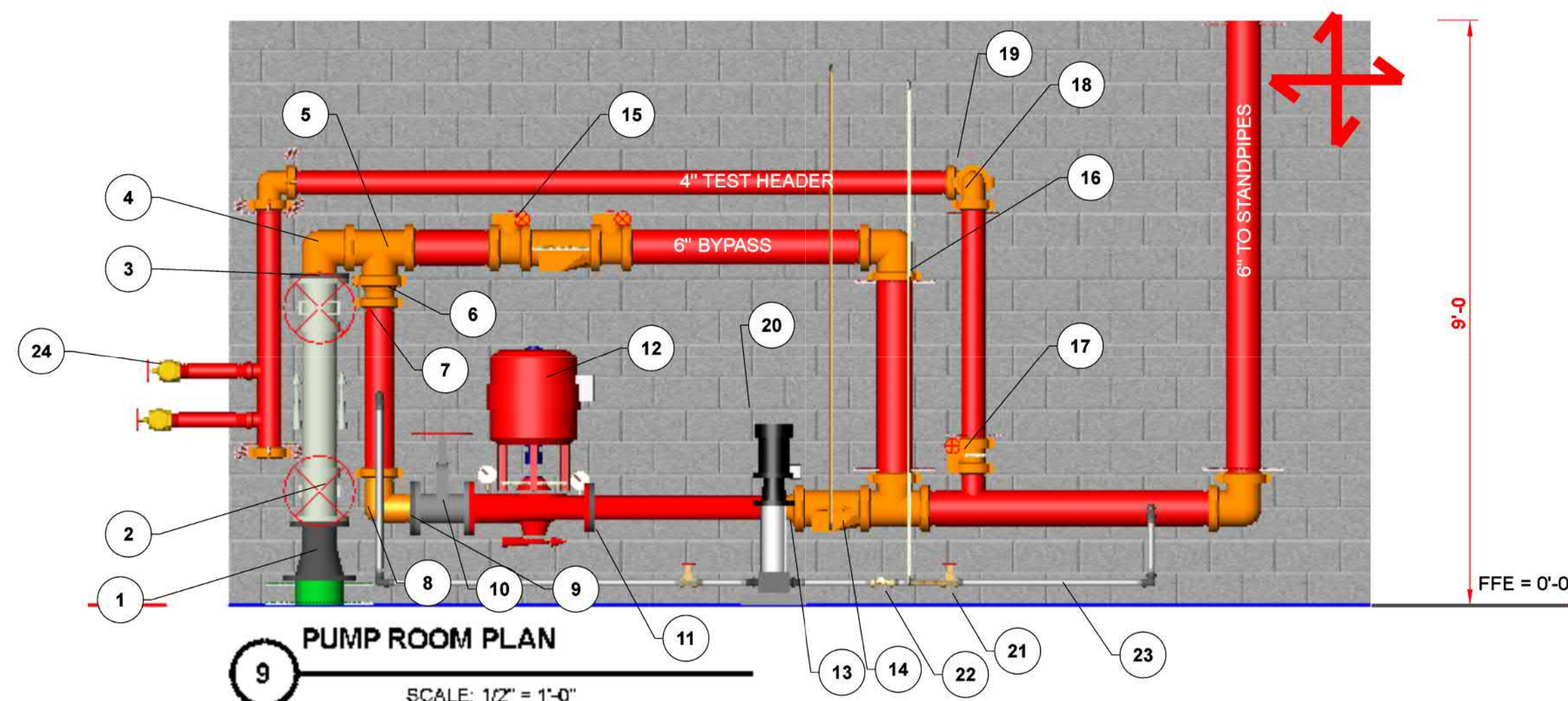
Parts Legend			
Key Note	Size	Description	Quantity
1	8" x 6"	Concentric Reducer F-F	1
2	6"	Wilkins 350 OS&Y F-F	1
3	6"	Grooved Flange	1
4	6"	Grooved 90	4
5	6"	Grooved Tee	2
6	6" x 5"	Concentric Reducer G-G	1
7	5"	Grooved Coupling	2
8	5"	Grooved 90	1
9	5"	Grooved Flange	1
10	5"	OS&Y Valve F-F	1
11	4"	Grooved Flange	1
12	5" x 4"	Fire Pump & Driver	1
13	6" x 4"	Eccentric Reducer G-G	1
14	6"	Check Valve G-G	1
15	6"	Butterfly Valve G-G	2
16	6"	Coupling G-G	15
17	4"	Butterfly Valve G-G	1
18	4"	Grooved 90	3
19	4"	Coupling G-G	9
20	N/A	Jockey Pump	1
21	1-1/4"	OS&Y Control Valve W/ Tamper	2
22	1-1/4"	Check Valve T-T	3
23	1-1/4"	Jockey Pump Piping	N/A
24	2-1/2"	Hose Valve	2
25	1/2"	Di-Electric Union	2
26	1/2"	Pump Sensing Line	N/A
27	N/A	Test Assembly Per NFPA 20	N/A
28	N/A	Test Assembly Per NFPA 20	N/A
29	N/A	Jockey Pump Control Panel	N/A
30	N/A	Fire Pump Control Panel	N/A
31	N/A	Spare Head Cabinet	N/A



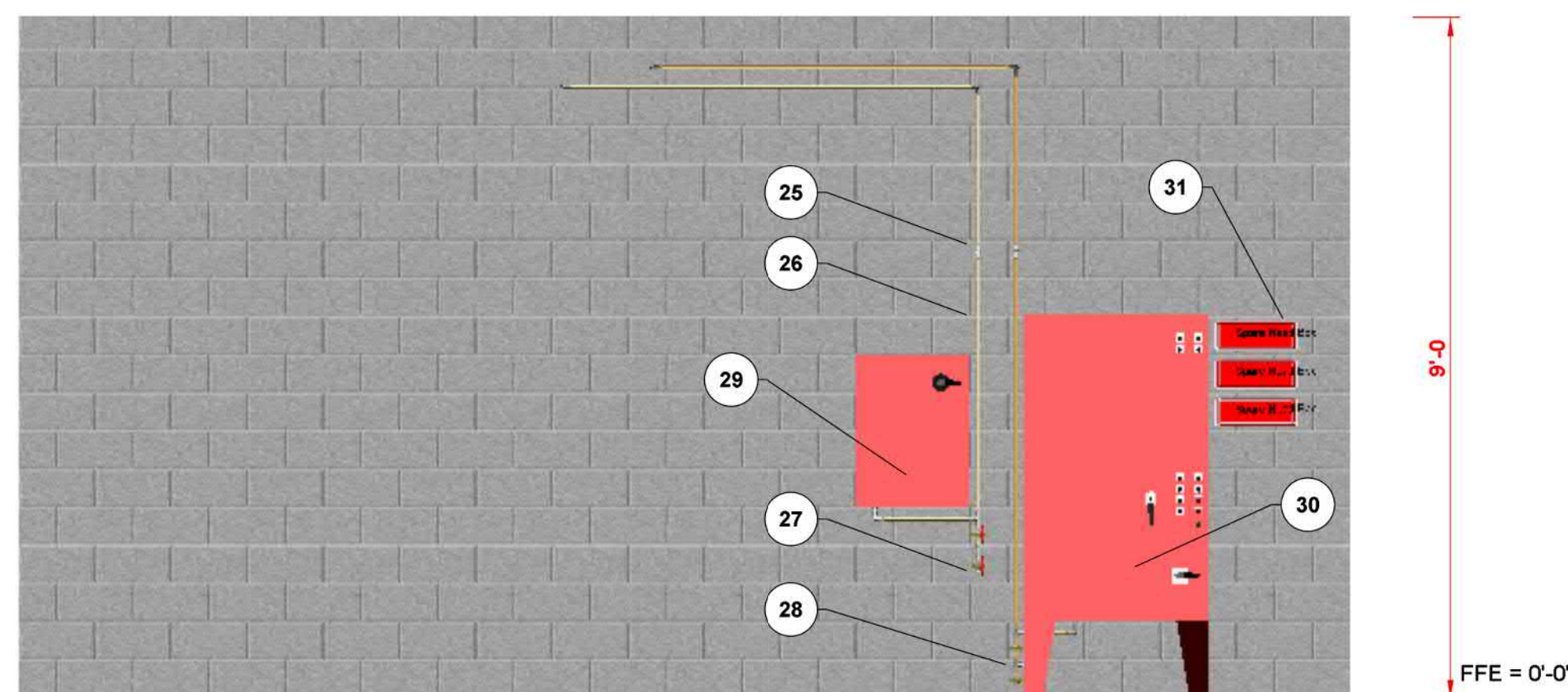
ISOMETRIC PUMP PLAN
SCALE: 1/8"=1'-0"



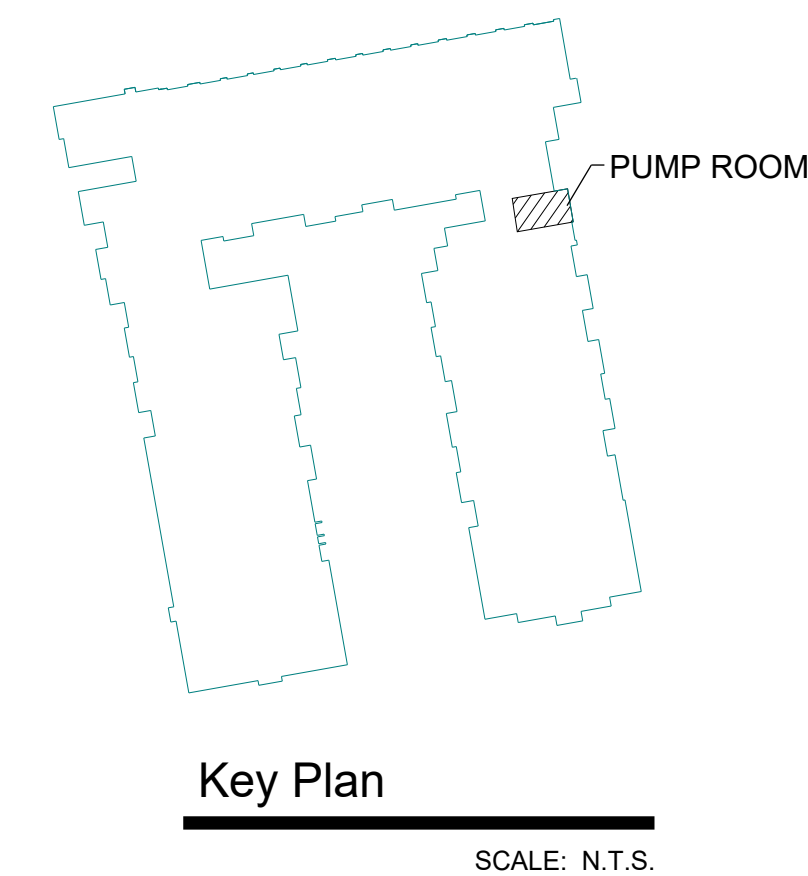
ISOMETRIC PUMP PLAN
SCALE: 1/8"=1'-0"



9 PUMP ROOM PLAN
SCALE: 1/2" = 1'-0"



10 PUMP ROOM PLAN
SCALE: 1/2" = 1'-0"



Key Plan
SCALE: N.T.S.

SYMBOL LEGEND

- ★ x'-x FF ⊏ PIPE ELEVATION ABOVE FINISH FLOOR
- ★ x'-x TS ⊏ PIPE ELEVATION BELOW TOP OF STEEL



ROOM HAZARD CLASSIFICATION (ALL ROOMS ARE CONSIDERED LIGHT HAZARD OR RESIDENTIAL U.N.O.)



HYDRAULIC CALCULATION JUNCTION POINT

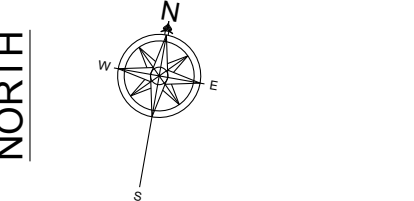
9'-0" CEILING HEIGHT

WET BLACK STEEL PIPE

WET CPVC PIPE

DRY BLACK STEEL PIPE

REVISIONS	

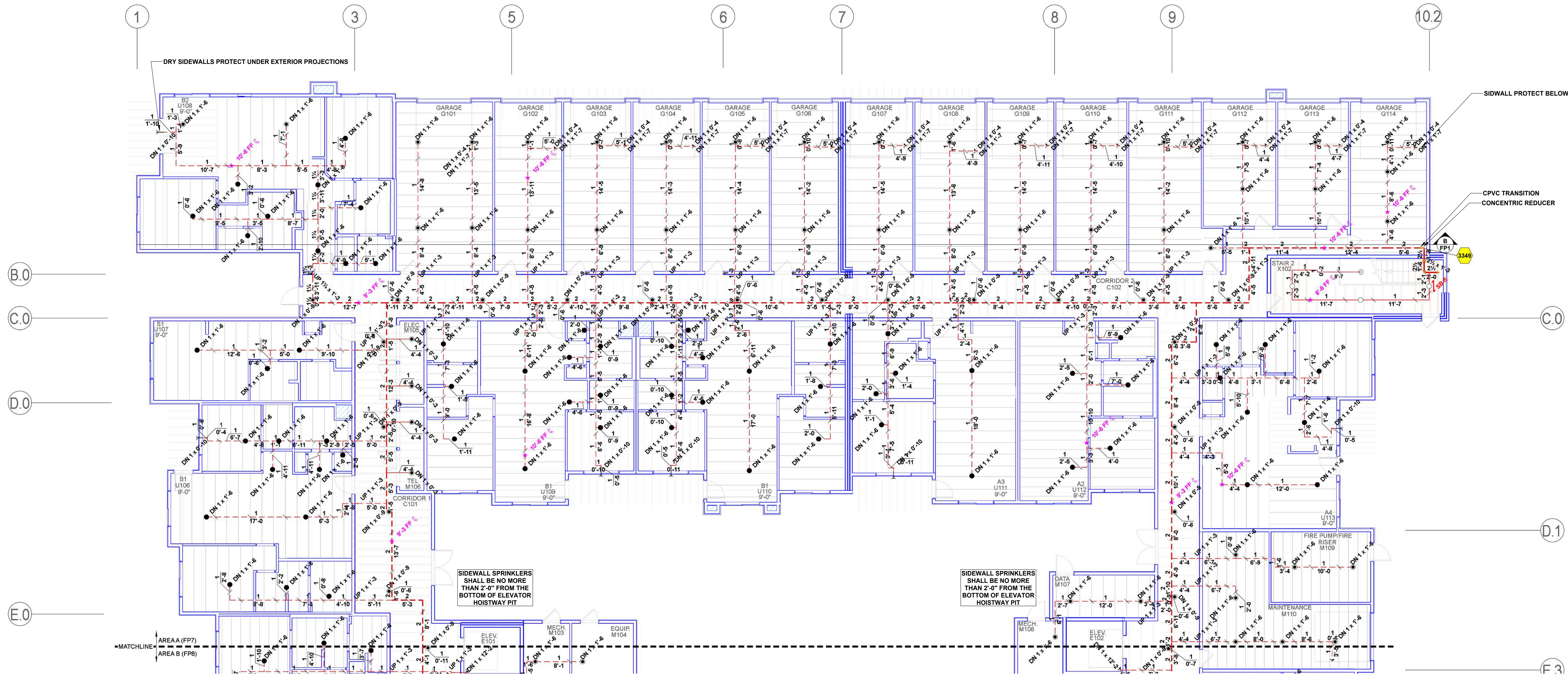


WATER SUPPLY & SYSTEM DESIGN DATA
 WATER SUPPLY PRESSURE: 80 PSI
 RESIDUAL PRESSURE: 38 PSI
 GPM FLOWING: 2400 GPM
 ABOVE INFORMATION OBTAINED FROM:
 RESIDENTIAL LIGHT & ORDINARY HAZARD
 AREA OF APPLICATION SEE CALC. 80 FT.
 TOTAL SYSTEM REQUIREMENTS: * (SEE CALC) GPM HOSE
 (SEE CALC) GPM AT (SEE CALC) PSI AT BASE OF RISER

PROJECT
LEISURE LANE APARTMENTS
500 LEISURE LANE
SACRAMENTO, CA 95815

CONTRACTOR

DATE	09/06/23
JOB NO.	23-0139-02
SCALE	AS SHOWN
DRAWN BY	M.S.
CHECK BY	S.H.



FIRST FLOOR PIPING PLAN (AREA A)

SCALE: 1/8"=1'-0"

- 1) ALL WELDED PIPING 6" AND LARGER TO BE SCH 10 PIPE TYP. U.N.O.
- 2) ALL WELDED PIPING 4" AND SMALLER TO BE SCH 7 PIPE TYPE U.N.O.
- 3) ALL THREADED PIPING TO BE SCH 30 PIPE TYP. U.N.O.
- 4) ALL CPVC PIPING TO BE TYCO BLAZEMASTER

SYMBOL LEGEND

- ★x'x FF ↕ PIPE ELEVATION ABOVE FINISH FLOOR
- ★x'x TS ↕ PIPE ELEVATION BELOW TOP OF STEEL



ROOM HAZARD CLASSIFICATION (ALL ROOMS ARE CONSIDERED LIGHT HAZARD OR RESIDENTIAL U.N.O.)



HYDRAULIC CALCULATION JUNCTION POINT

9'-0"

CEILING HEIGHT



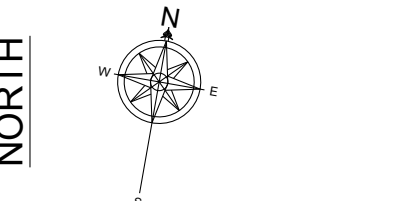
WET BLACK STEEL PIPE

WET CPVC PIPE



DRY BLACK STEEL PIPE

NO.	DATE	REVISIONS



WATER SUPPLY & SYSTEM DESIGN DATA
 WATER SUPPLY PRESSURE: 80 PSI
 RESIDENTIAL PRESSURE: 38 PSI
 GPM FLOWING: 2400 GPM
 ABOVE INFORMATION OBTAINED FROM:
 RESIDENTIAL LIGHT & ORDINARY HAZARD
 HAZARD CLASSIFICATION
 AREA OF APPLICATION: SEE CALC. 50 FT.
 TOTAL SYSTEM REQUIREMENTS: * (SEE CALC.) GPM HOSE
 (SEE CALC.) GPM AT (SEE CALC.) PSI AT BASE OF RISER

PROJECT
LEISURE LANE APARTMENTS
500 LEISURE LANE
SACRAMENTO, CA 95815

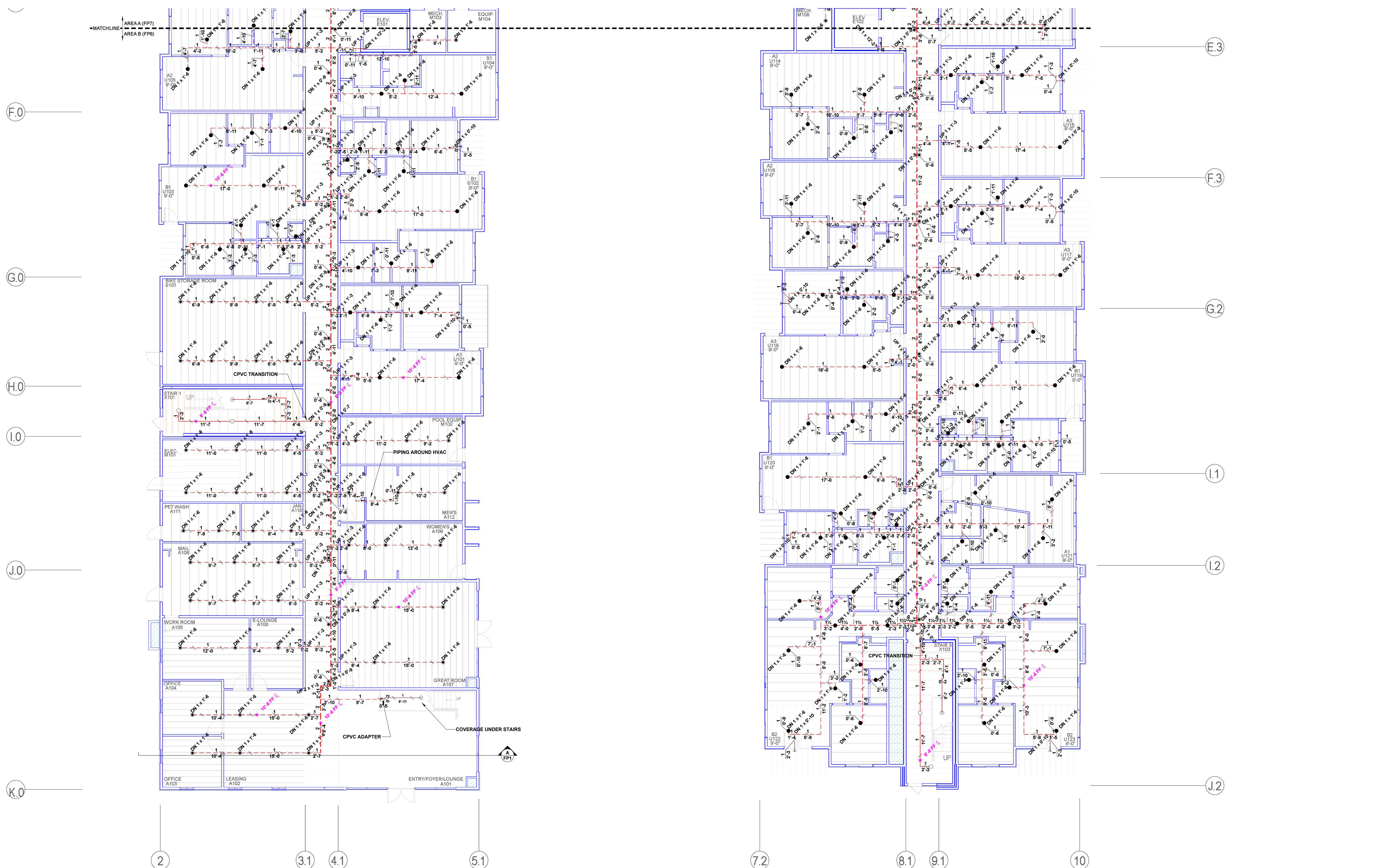
CONTRACTOR

DATE: 09/06/23
 JOB NO.: 23-0139-02
 SCALE: AS SHOWN
 DRAWN BY: M.S.
 CHECK BY: S.H.

SHEET

FP-07

PLOT DATE: 09-06-23 OF 24



FIRST FLOOR PIPING PLAN (AREA B)

SCALE: 1/8"=1'-0"

- 1.) ALL WELDED PIPING 6" AND LARGER TO BE SCH 10 PIPE TYP. U.N.O.
- 2.) ALL WELDED PIPING 4" AND SMALLER TO BE SCH 7 PIPE TYPE U.N.O.
- 3.) ALL THREADED PIPING TO BE SCH 30 PIPE TYP. U.N.O.
- 4.) ALL CPVC PIPING TO BE TYCO BLAZEMASTER

SYMBOL LEGEND

- ★x'-x' FF PIPE ELEVATION ABOVE FINISH FLOOR
- ★x'-x' TS PIPE ELEVATION BELOW TOP OF STEEL
- ROOM HAZARD CLASSIFICATION (ALL ROOMS ARE CONSIDERED LIGHT HAZARD OR RESIDENTIAL U.N.O.)
- HYDRAULIC CALCULATION JUNCTION POINT

- 9'-0" CEILING HEIGHT
- WET BLACK STEEL PIPE
- WET CPVC PIPE
- DRY BLACK STEEL PIPE

<p>REVISIONS</p> <table border="1" style="width: 100%; height: 50px;"> <tr><td> </td><td> </td></tr> <tr><td> </td><td> </td></tr> <tr><td> </td><td> </td></tr> <tr><td> </td><td> </td></tr> </table>									<p>NORTH</p>	<p>WATER SUPPLY & SYSTEM DESIGN DATA</p> <p>WATER SUPPLY INFORMATION: PSI, GPM</p> <p>RESIDUAL PRESSURE: 30 PSI</p> <p>GPM FLOWING: 2400 GPM</p> <p>HAZARD CLASSIFICATION: RESIDENTIAL LIGHT & ORDINARY HAZARD</p> <p>AREA OF APPLICATION: SEE CALCS. 50 FT.</p> <p>TOTAL SYSTEM REQUIREMENTS: * (SEE CALCS.) GPM HOSE (SEE CALCS.) GPM AT (SEE CALCS.) PSI AT BASE OF RISER</p>
<p>PROJECT: LEISURE LANE APARTMENTS 500 LEISURE LANE SACRAMENTO, CA 95815</p>										
<p>DATE: 09/06/23</p> <p>JOB NO: 23-0139-02</p> <p>SCALE: AS SHOWN</p> <p>DRAWN BY: M.S.</p> <p>CHECK BY: S.H.</p>		<p>SHEET: FP-08</p> <p>PLOT DATE: 09-06-23 OF 24</p>								