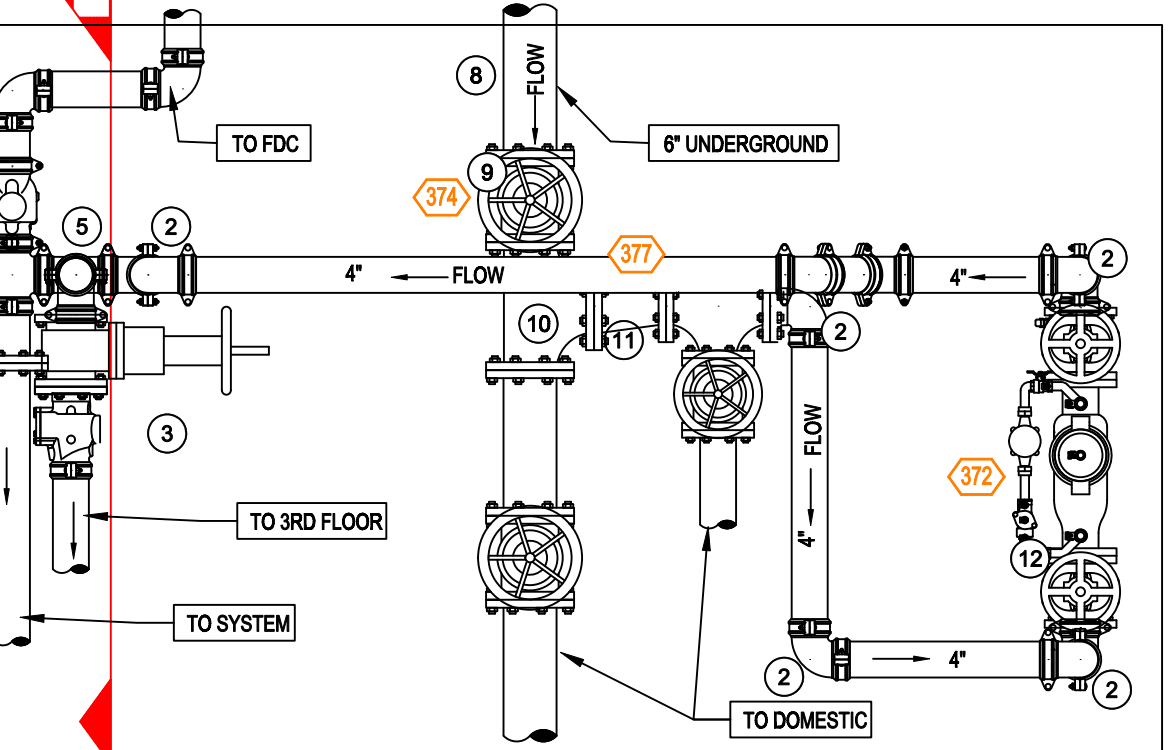
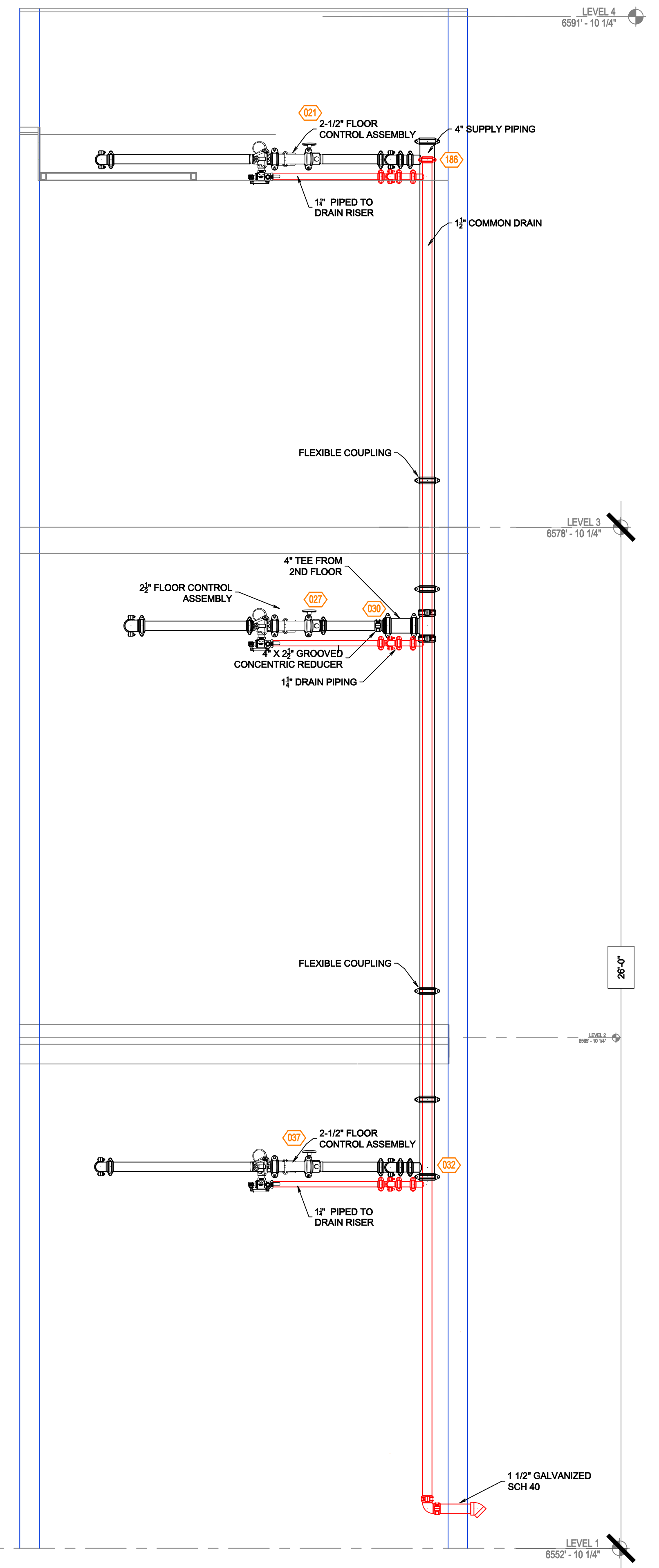


- EXISTING RISER LEGEND (NO WORK)**
- 4" UNDERGROUND TO YARD FDC
 - 4" GROOVED 90
 - 4" GROOVED CHECK VALVE
 - 4" FLANGED OS&Y W/ TAMPER
 - 4" GROOVED TEE
 - MAIN DRAIN PIPED TO OUTSIDE
 - FLOW SWITCH
 - 6" UNDERGROUND WATER SERVICE
 - 6" FLANGED OS&Y VALVE
 - 6" FLANGED TEE
 - 6"x4" FLANGED REDUCER
 - 4" ZURN WILKINS 375DA BACKFLOW

EXISTING RISER DETAIL SECTION

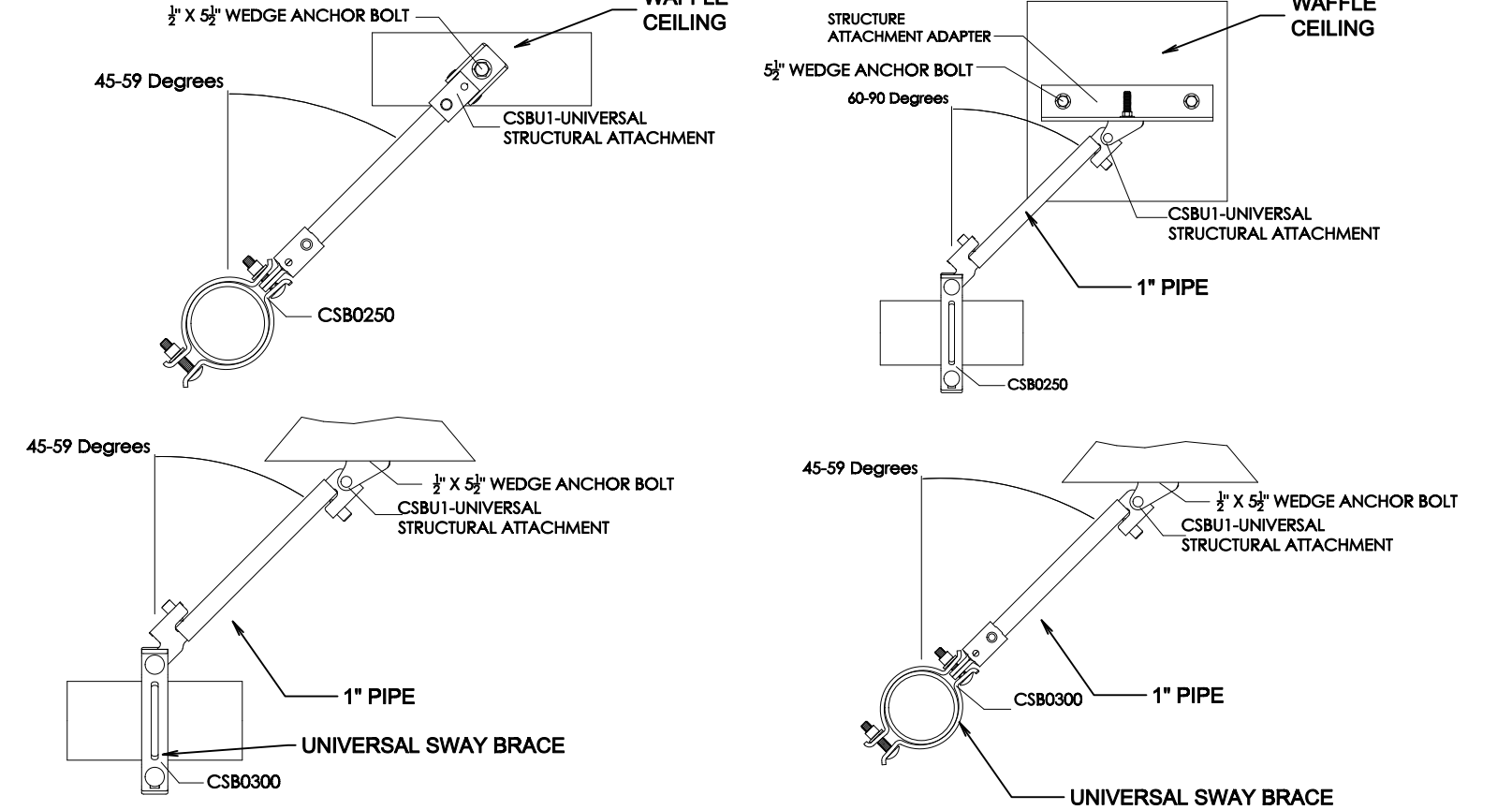


EXISTING RISER DETAIL PLAN VIEW (FOR HYDRAULIC REFERENCE)
SCALE= 1/2" : 1'-0"

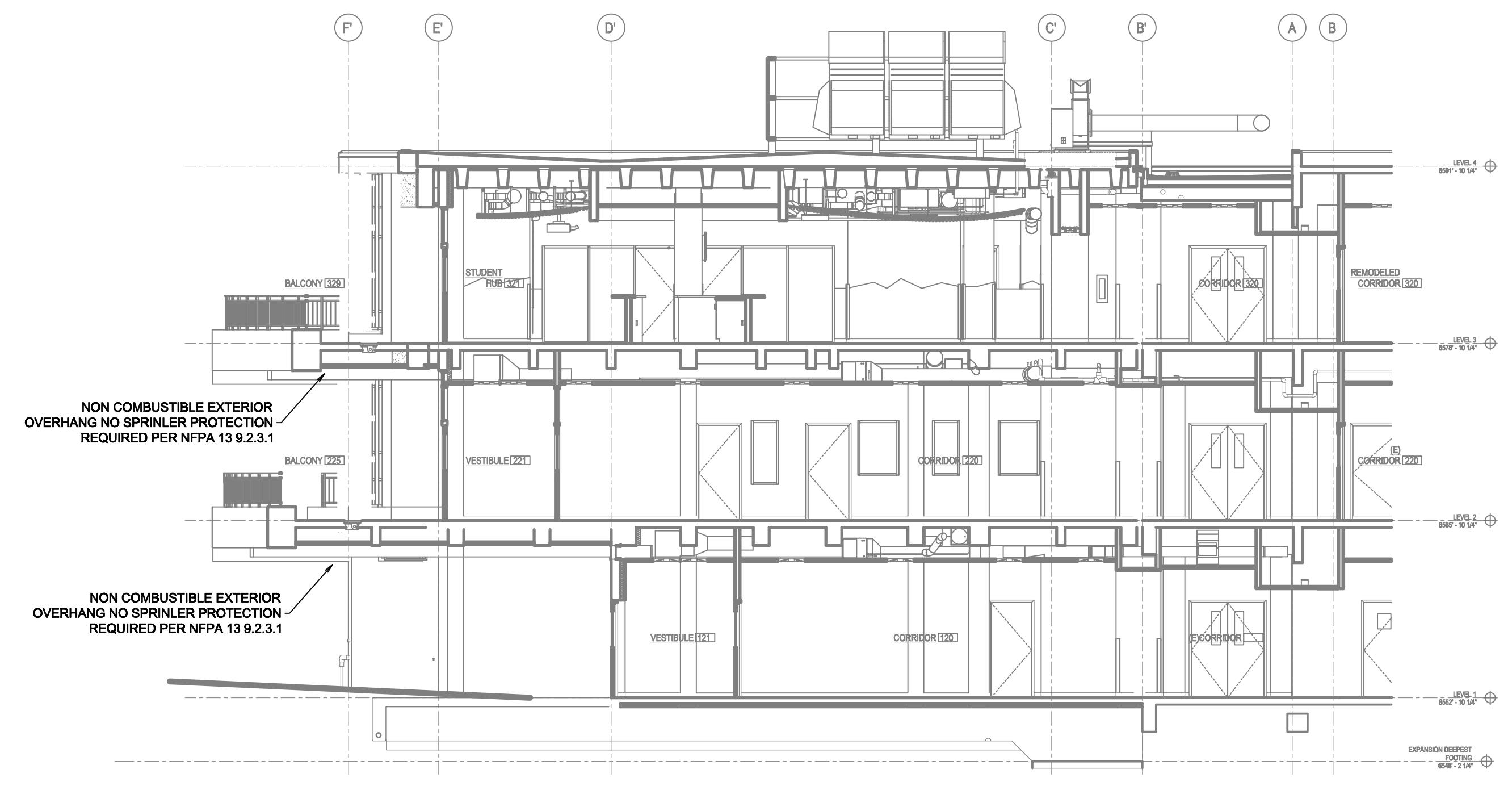


1 ZONE CONTROL DETAIL
SCALE= 1/2" : 1'-0"

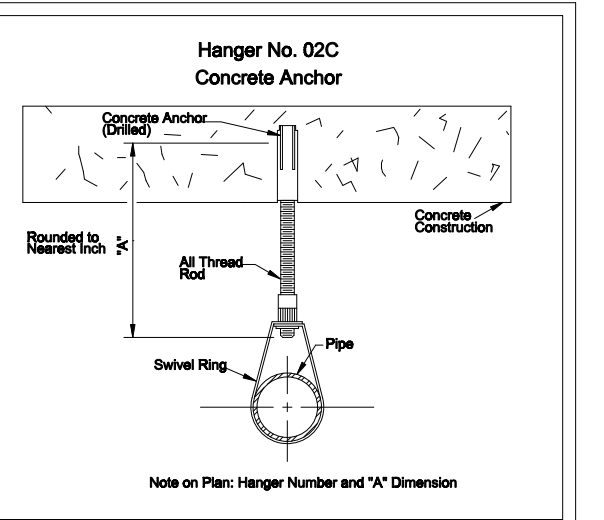
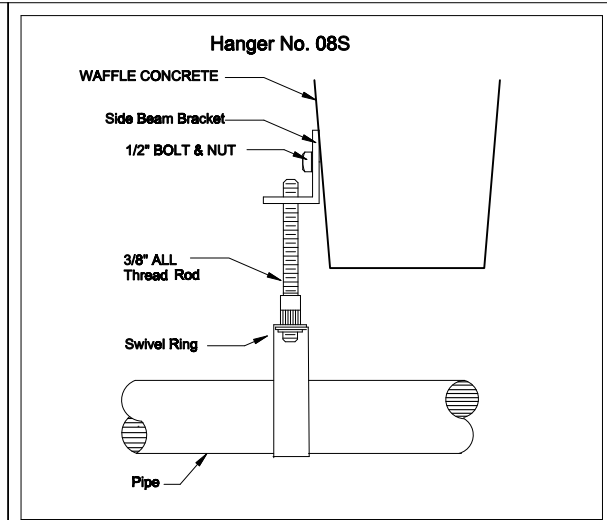
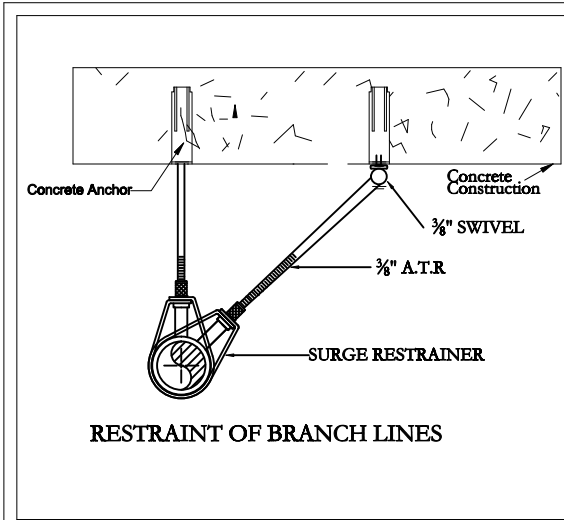
2 WINDOW SPRINKLER DETAIL
SCALE= NTS



3 SEISMIC BRACE DETAIL
SCALE= NTS

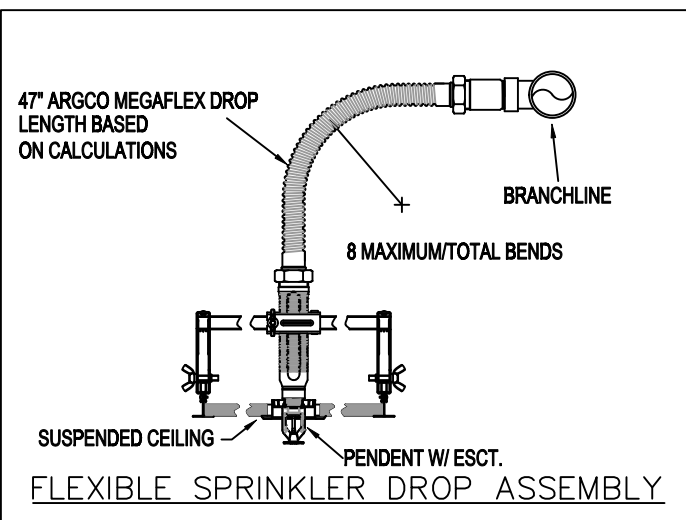


A BUILDING SECTION
SCALE= 1/8" : 1'-0"



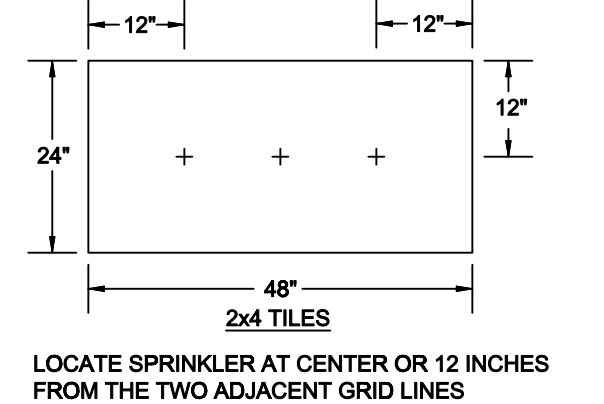
NFPA 13 STEEL PIPE BRANCHLINE RESTRAINT

NOMINAL SIZE (inches)	MAX SPACING (feet)
1"	36"
1-1/4"	36"
1-1/2"	41"
2"	45"

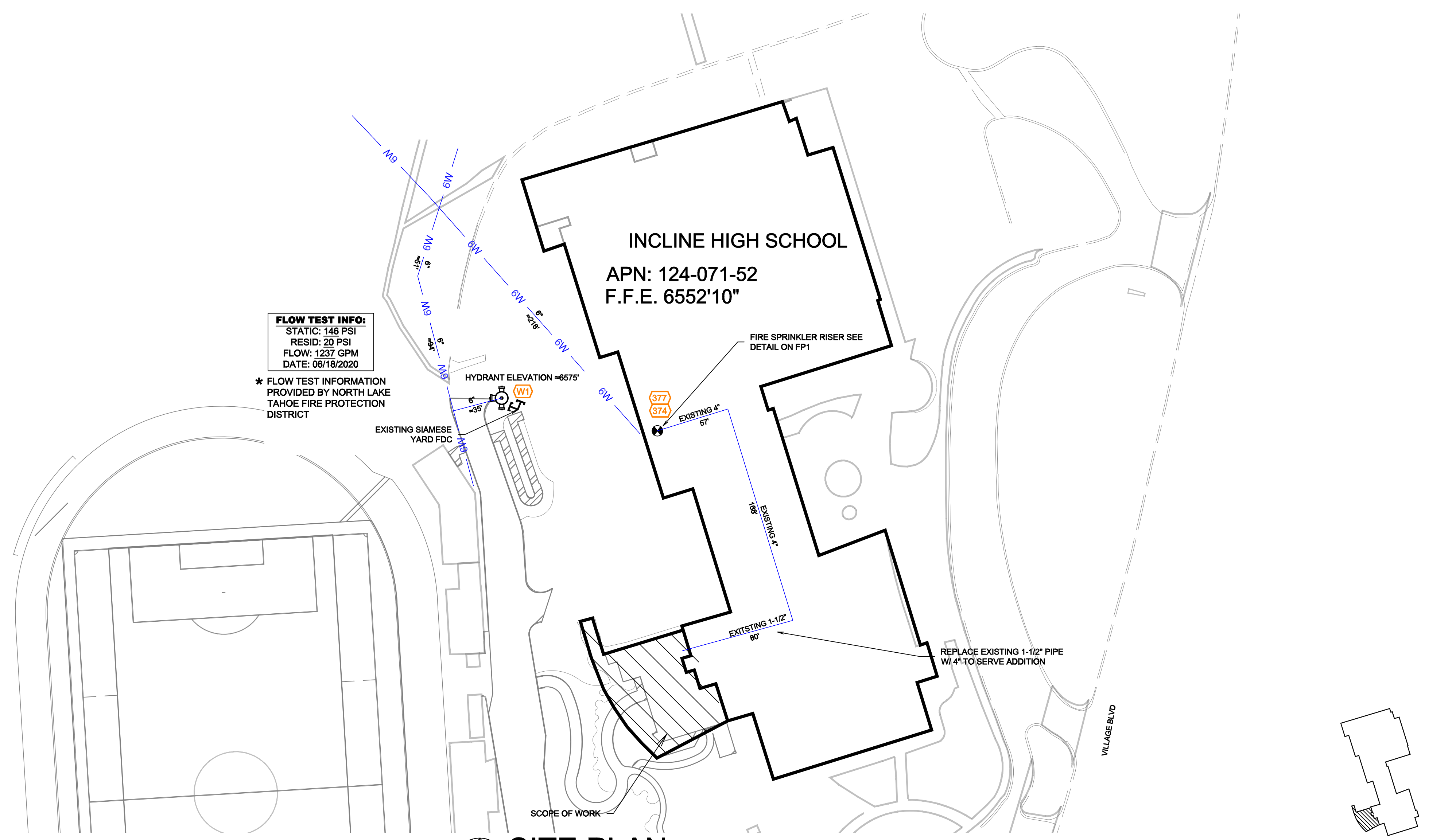


NFPA 13 STEEL PIPE HANGER SPACING
(EXCEPT LIGHT WALL THRU PIPING)

NOMINAL SIZE (inches)	MAX SPACING (feet)
1"	12'-0"
1-1/4"	12'-0"
1-1/2"	15'-0"
2"	15'-0"
2-1/2"	15'-0"
3"	15'-0"
4" & LARGER	15'-0"



- GENERAL NOTES**
- INTERNATIONAL BUILDING CODE (2018)
 - OCCUPANCY/EDUCATION I-E
 - TYPE OF CONSTRUCTION I-B
 - SPRINKLERED AREAS (APPROXIMATE - SEE ARCHITECTURAL PLANS FOR ACTUAL)
 - LEVEL 1 = 3,328 S.F.
 - LEVEL 2 = 3,921 S.F.
 - LEVEL 3 = 3,921 S.F.
 - TOTAL = 11,170 S.F.
 - INSTALLATION STANDARDS:
 - SPRINKLER SYSTEM DESIGNED AND INSTALLED PER NFPA-13 (2022)
 - SPRINKLER PIPE TYPES:
 - 1" BRANCH LINES TO BE BLK LIGHTWALL PIPING WITH THREADED FITTINGS
 - 1 1/2" THROUGH 6" MAIN & BRANCH LINES TO BE BLK LIGHTWALL PIPING WITH GROOVED FITTINGS
 - MAINS & BRANCH LINES TO BE ROLL-GROOVED BLK LIGHTWALL PIPING
 - DESIGN CRITERIA
 - CLASSROOMS, COMMON AREAS, CORRIDORS RESTROOMS AND SIMILAR TO BE LIGHT HAZARD
 - RESTAURANT, CULINARY ARTS ROOM AND MECHANICAL/ELECTRICAL ROOMS TO BE ORDINARY HAZARD GROUP 1
 - REMOTE AREA REDUCTIONS HAVE BEEN TAKEN WHERE APPLICABLE PER NFPA 13 SEC. 19.2.3.2.3
 - NOTES:
 - ALL MATERIAL TO BE NEW AND MEET U.L. STANDARDS
 - HANGERS TO BE INSTALLED IN ACCORDANCE WITH NFPA 13 (2022) - SEE PLAN FOR HANGING REQ.
 - SCOPE OF WORK:
 - NEW ADDITION, 3 NEW WET ZONES TO BE ADDED ON EACH FLOOR OF ADDITION. SPRINKLERS TO BE RELOCATED IN ADMINISTRATION AREA AND CLASSROOMS 213A, 213B.
 - ALL AREAS OF THE BUILDING ADDITION TO BE INSTALLED AND COVERED IN ACCORDANCE WITH THE LOCAL AUTHORITY HAVING JURISDICTION AND PER NFPA 13 (2022)



SITE PLAN
SCALE= 1" : 50'-0"

KEY PLAN

WATER SUPPLY INFORMATION - FLOW TEST DATA

STATIC PRESS	RESIDUAL PRESS	FLOW GPM	DATE OF FLOW TEST
146	20	1237	6/18/2020

SYMBOLS AND ABBREVIATIONS

- HAZARD CLASSIFICATION
- BRANCHLINE RESTRAINT
- HYDRAULIC NODE
- PIPE ELEVATION A.F.F.
- HEAD GUARD
- 2 WAY SEISMIC BRACE
- 4 WAY SEISMIC BRACE

SPRINKLER HEADS

QTY	SYMB.	HEAD TYPE	TEMP.	FINISH	ORIFICE	MODEL	CANOPY	SIN
42	○	UPRIGHT	200	BRASS	5.60	TY-FRB	N/A	TY313
99	●	CONCEALED PENDENT	200	WHITE	5.60	RFLI	CONCEALED	TY3531
20	●	CONCEALED PENDENT	200	WHITE	5.60	TY-CWS	CONCEALED	TY3498
19	●	CONCEALED PENDENT	212	WHITE	11.2	ELOC	CONCEALED	TY5522
1	◁	SIDEWALL	200	BRASS	5.60	TY-FRB	N/A	TY3331
7	●	EXPOSED PENDENT	200	BRASS	5.60	TY-FRB	N/A	TY323

CONTRACT RESPONSIBILITIES

ITEM	QFP	OTHERS
STREET WATER CONNECTION		
UNDERGROUND WATER MAINS		
EXCAVATION		
BACKFILL		
WIRING		
PAINTING		

INCLINE HIGH SCHOOL
499 VILLAGE BLVD
INCLINE VILLAGE, NV 89451

Design Area # 2 HAZARD: OH1
 Zone: 1 System Type: WET
 Location: 2ND FLOOR KITCHEN
 Flowing Outlets: 16
 Density: 0.15 Remote Area: 1009
 Flow: 626 gpm @ 85 psi
 Calculation Safety: 25 psi
 Includes 250 gpm Hose allowance

NOTE: 1500cf REDUCED BY 38% TO 962cf DUE TO CEILING HEIGHT PER NFPA 13 FIG. 19.3.3.2.3.1
 NOTE: CALCULATION INCLUDES ONE SIDE OF WINDOW SPRINKLERS PER THE MANUFACTURER'S CUTSHEET

SPRINKLERS TO PROTECT UNDERSTAIR RING LIGHTS WITH ACOUSTIC PANEL

ACOUSTIC PANELING TIGHT TO DECK

SPRINKLER TO PROTECT UNDER DUCTWORK

NON COMBUSTIBLE STAIR SHAFT NO SPRINKLER REQUIRED PER NFPA 13 9.3.4.2

4" UP AND DOWN SEE DETAIL ON FS-1

NON COMBUSTIBLE EXTERIOR OVERHANG NO SPRINKLER PROTECTION REQUIRED PER NFPA 13 9.2.3.1

1/2" NIPPLE AND BALL VALVE FOR AIR VENT HERE

WINDOW SPRINKLERS TO PROVIDE 45 MINUTE SEPARATION SEE DETAIL 2 ON FPI TYP.

EXTENDED COVERAGE HEADS 15'X15' MAX SPACING THIS FLOOR
 STANDARD COVERAGE HEADS 15'X15' MAX SPACING 130 S.F. ORDINARY HAZARD

Design Area # 1 HAZARD: LH
 Zone: 1 System Type: WET
 Location: 2ND FLOOR CLASSROOM
 Flowing Outlets: 10
 Density: 0.10 Remote Area: 994
 Flow: 413 gpm @ 105 psi
 Calculation Safety: 24.5 psi
 Includes 100 gpm Hose allowance

NOTE: 1500cf REDUCED BY 40% TO 900cf DUE TO CEILING HEIGHT PER NFPA 13 FIG. 19.3.3.2.3.1
 NOTE: CALCULATION INCLUDES ONE SIDE OF WINDOW SPRINKLERS PER THE MANUFACTURER'S CUTSHEET

CALC PLACARD

NON COMBUSTIBLE EXTERIOR OVERHANG NO SPRINKLER PROTECTION REQUIRED PER NFPA 13 9.2.3.1

EXPOSED PENDENT THROUGH WOOD SLAT CEILING SEE DETAIL 2 ON THIS PAGE

UPRIGHT SPRINKLER TO PROTECT ABOVE CLOUDS TYP. 1/2" NIPPLE AND BALL VALVE FOR AIR VENT HERE

Design Area # 5 HAZARD: LH
 Zone: 3 System Type: WET
 Location: 3RD FLOOR

Flowing Outlets: 9
 Density: 0.10 Remote Area: 972
 Flow: 342 gpm @ 113 psi
 Calculation Safety: 21.5 psi
 Includes 100 gpm Hose allowance

NOTE: 1500cf REDUCED BY 38% TO 962cf DUE TO CEILING HEIGHT PER NFPA 13 FIG. 19.3.3.2.3.1

CALC PLACARD

STANDARD COVERAGE HEADS 15'X15' MAX SPACING
 BRANCHLINE RESTRAINTS NOT REQUIRED FOR ROD LENGTHS 6" OR LESS PER NFPA 13 SEC 18.6.1

LEVEL 3 SPRINKLER PLAN
 SCALE = 1/8" = 1'-0"

LEVEL 2 SPRINKLER PLAN
 SCALE = 1/8" = 1'-0"

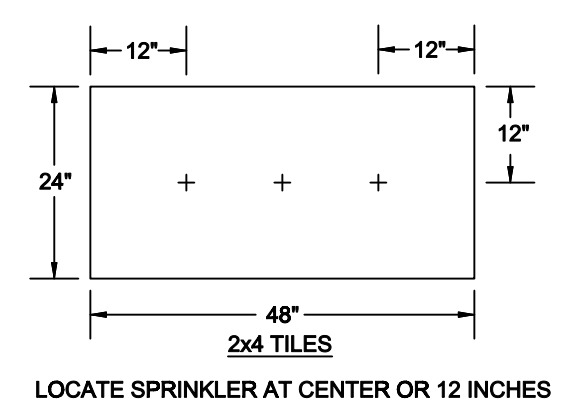
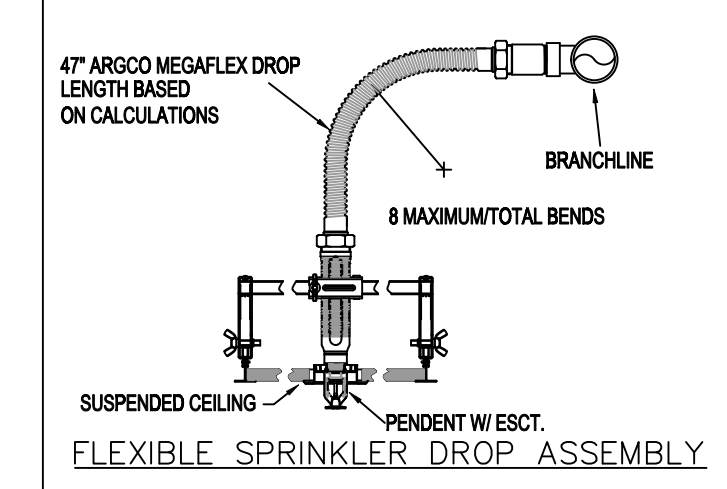
2 SPRINKLER DETAIL
 SCALE = NTS

NFPA 13 STEEL PIPE HANGER SPACING
 (EXCEPT LIGHT WALL THRU PIPING)

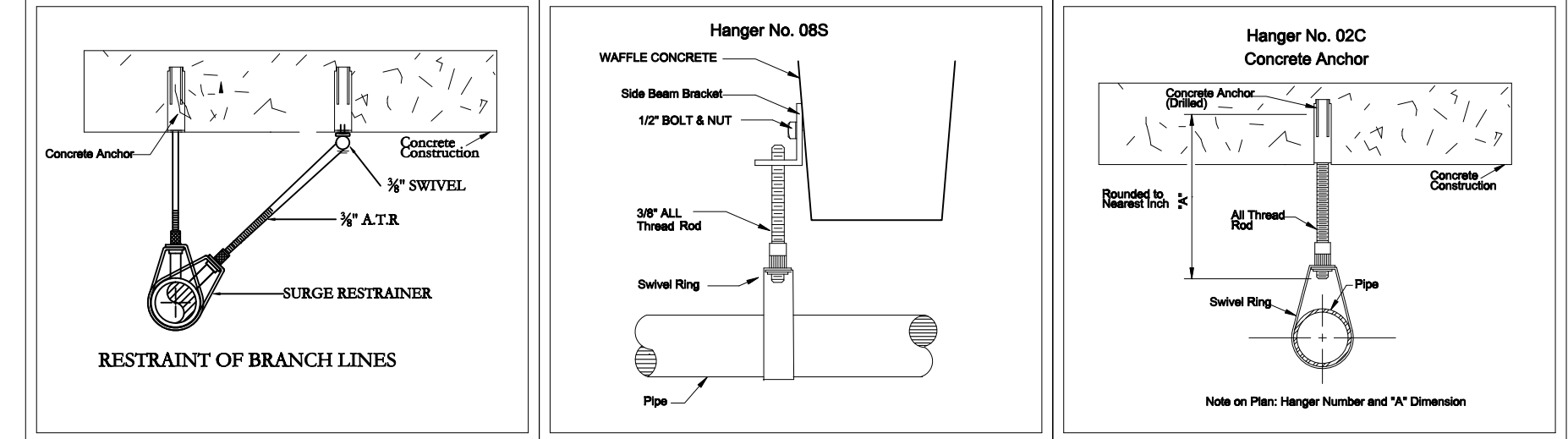
NOMINAL SIZE inches	MAX SPACING feet
1"	12'-0"
1-1/4"	12'-0"
1-1/2"	15'-0"
2"	15'-0"
2-1/2"	15'-0"
3"	15'-0"
4" LARGER	15'-0"

NFPA 13 STEEL PIPE BRANCHLINE RESTRAINT
 0.5-CIP-1.40

NOMINAL SIZE inches	MAX SPACING feet
1"	36"
1-1/4"	39"
1-1/2"	41"
2"	45"



KEY PLAN



WATER SUPPLY INFORMATION - FLOW TEST DATA

DATE: 146	DESIGN: 20	FLOW: 1237	DATE OF TEST: 6/18/2020
FLOW TEST			
LOCATION: BACK OF SCHOOL BY BUS PARKING FH-859P			
SOURCE OF INFORMATION: NORTH LAKE TAHOE FIRE DISTRICT			

SYMBOLS AND ABBREVIATIONS

OH1	HAZARD CLASSIFICATION
—	BRANCHLINE RESTRAINT
○	HYDRAULIC NODE
—10'	PIPE ELEVATION A.F.F
⊕	HEAD GUARD
↔	2 WAY SEISMIC BRACE
+	4 WAY SEISMIC BRACE

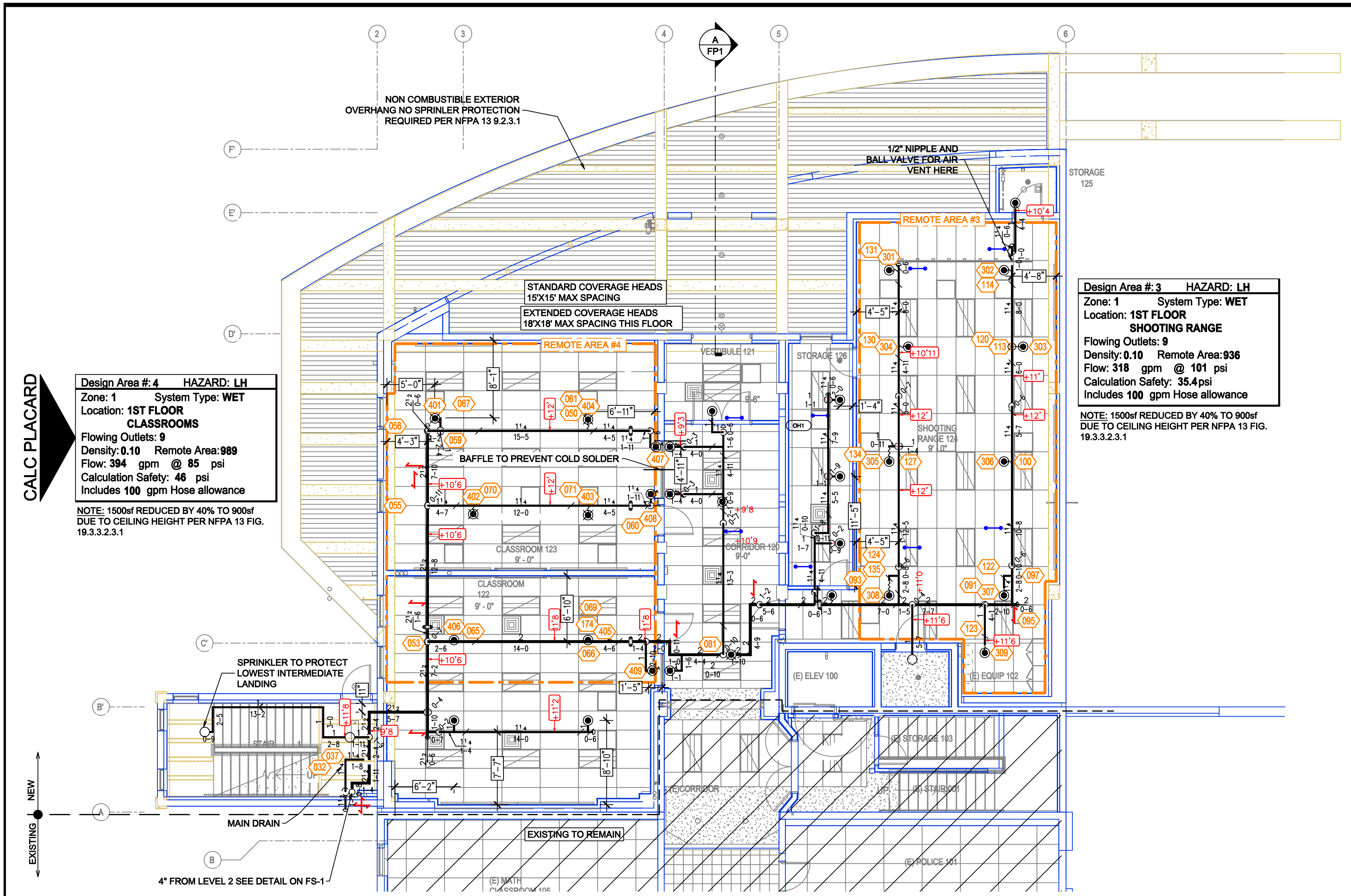
SPRINKLER HEADS

QTY	SYMB.	HEAD TYPE	TEMP.	FINISH	ORIFICE	MODEL	CANOPY	SIN	ITEM	CONTRACT RESPONSIBILITIES	OTHERS
42	○	UPRIGHT	200	BRASS	5.60	TY-FRB	N/A	TY313	STREET WATER CONNECTION	○FP	
99	●	CONCEALED PENDENT	200	WHITE	5.60	RFLI	CONCEALED	TY3531	UNDERGROUND WATER MAINS		
20	●	CONCEALED PENDENT	200	WHITE	5.60	TY-CWS	CONCEALED	TY3498	EXCAVATION		
19	●	CONCEALED PENDENT	212	WHITE	11.2	ELOC	CONCEALED	TY5522	BACKFILL		
1	◁	SIDEWALL	200	BRASS	5.60	TY-FRB	N/A	TY3331	WRING		
7	●	EXPOSED PENDENT	200	BRASS	5.60	TY-FRB	N/A	TY323	PAINTING		

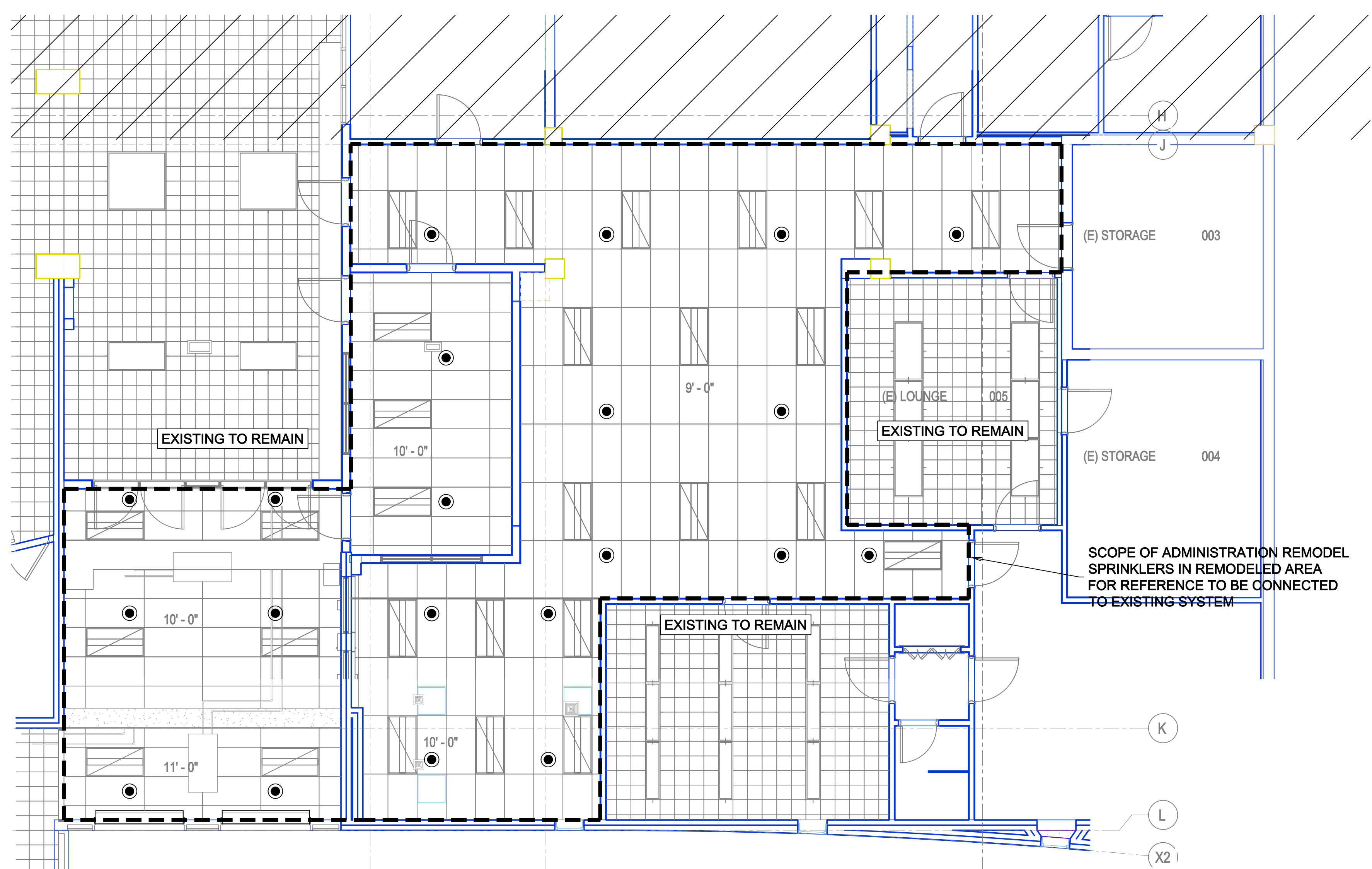
CONTRACT RESPONSIBILITIES

NO.	DATE	BY

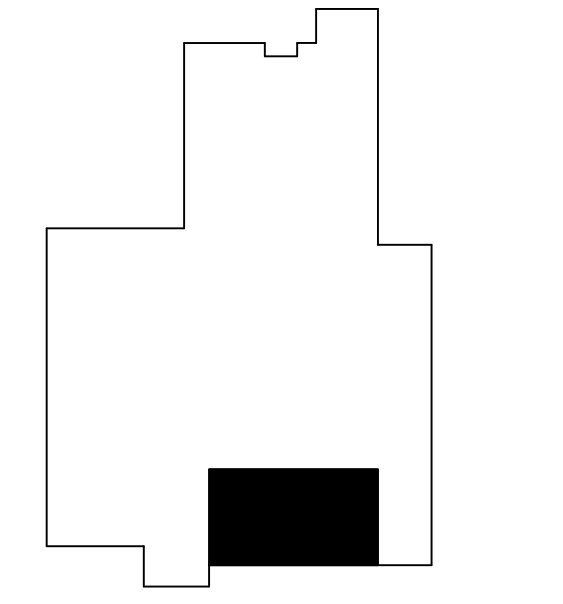
INCLINE HIGH SCHOOL
 499 VILLAGE BLVD
 INCLINE VILLAGE, NV 89451



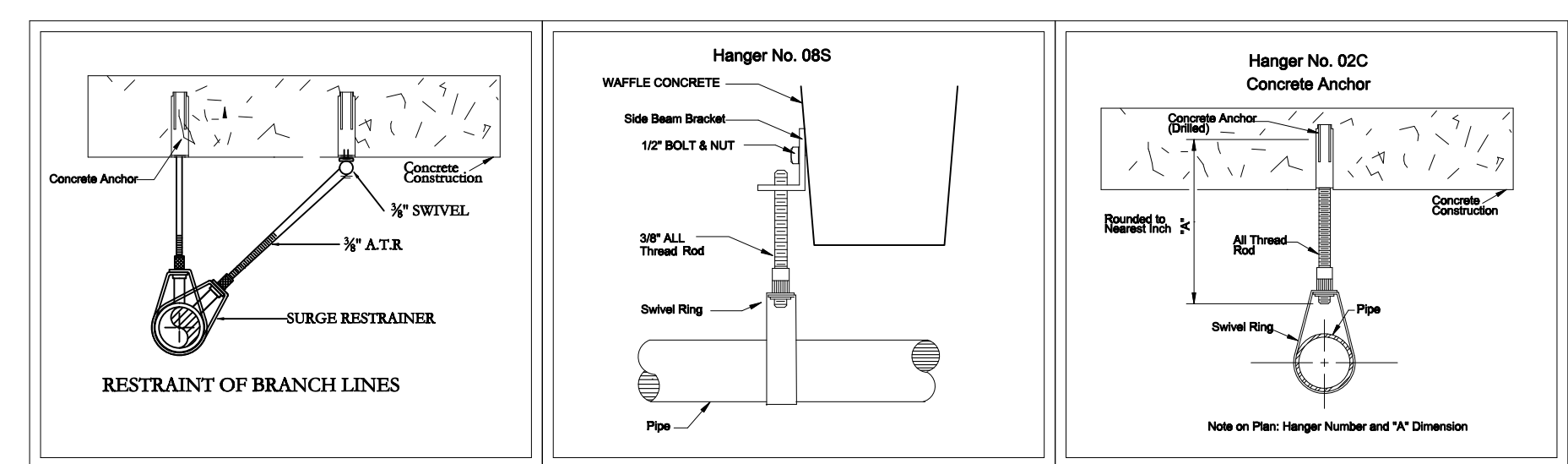
LEVEL 1 SPRINKLER PLAN
 SCALE= 1/8" : 1'-0"



ADMINISTRATION SPRINKLER PLAN
 SCALE= 1/8" : 1'-0"

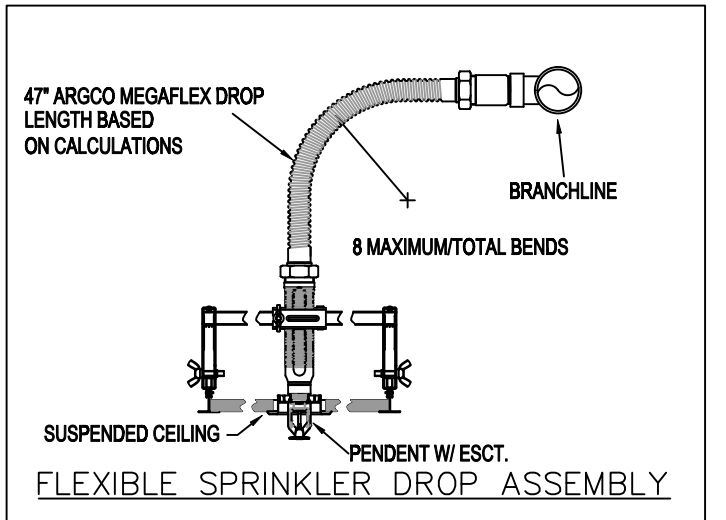


KEY PLAN



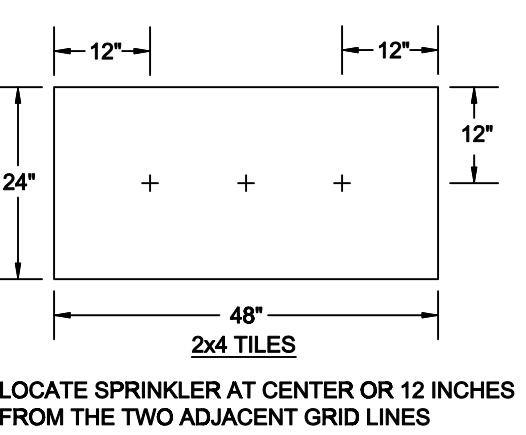
NFPA 13 STEEL PIPE BRANCHLINE RESTRAINT
 0.5-Cp-1.40

NOMINAL SIZE INCHES	MAX SPACING INCHES
1"	36"
1-1/4"	36"
1-1/2"	41"
2"	45"



NFPA 13 STEEL PIPE HANGER SPACING
 (EXCEPT LIGHT WALL THRO PIPING)

NOMINAL SIZE INCHES	MAX SPACING FEET
1"	12'-0"
1-1/4"	12'-0"
1-1/2"	15'-0"
2"	15'-0"
2-1/2"	15'-0"
3"	15'-0"
4" & LARGER	15'-0"



KEY PLAN

WATER SUPPLY INFORMATION - FLOW TEST DATA

STATION	PIPING	FLOW	DATE OF TEST
146	20	1237	6/18/2020

SYMBOLS AND ABBREVIATIONS

- HAZARD CLASSIFICATION
- BRANCHLINE RESTRAINT
- HYDRAULIC NODE
- PIPE ELEVATION A.F.F.
- HEAD GUARD
- 2 WAY SEISMIC BRACE
- 4 WAY SEISMIC BRACE

SPRINKLER HEADS

QTY	SYMB.	HEAD TYPE	TEMP.	FINISH	ORIFICE	MODEL	CANOPY	SIN
42	○	UPRIGHT	200	BRASS	5.60	TY-FRB	N/A	TY313
99	●	CONCEALED PENDENT	200	WHITE	5.60	RFII	CONCEALED	TY3531
20	●	CONCEALED PENDENT	200	WHITE	5.60	TY-CWS	CONCEALED	TY3498
19	●	CONCEALED PENDENT	212	WHITE	11.2	ELOC	CONCEALED	TY5522
1	◁	SIDEWALL	200	BRASS	5.60	TY-FRB	N/A	TY3331
7	●	EXPOSED PENDENT	200	BRASS	5.60	TY-FRB	N/A	TY323

CONTRACT RESPONSIBILITIES

ITEM	OFF	OTHERS
STREET WATER CONNECTION		
UNDERGROUND WATER MAINS		
EXCAVATION		
BACKFILL		
WIRING		
PAINTING		

INCLINE HIGH SCHOOL
 499 VILLAGE BLVD
 INCLINE VILLAGE, NV 89451