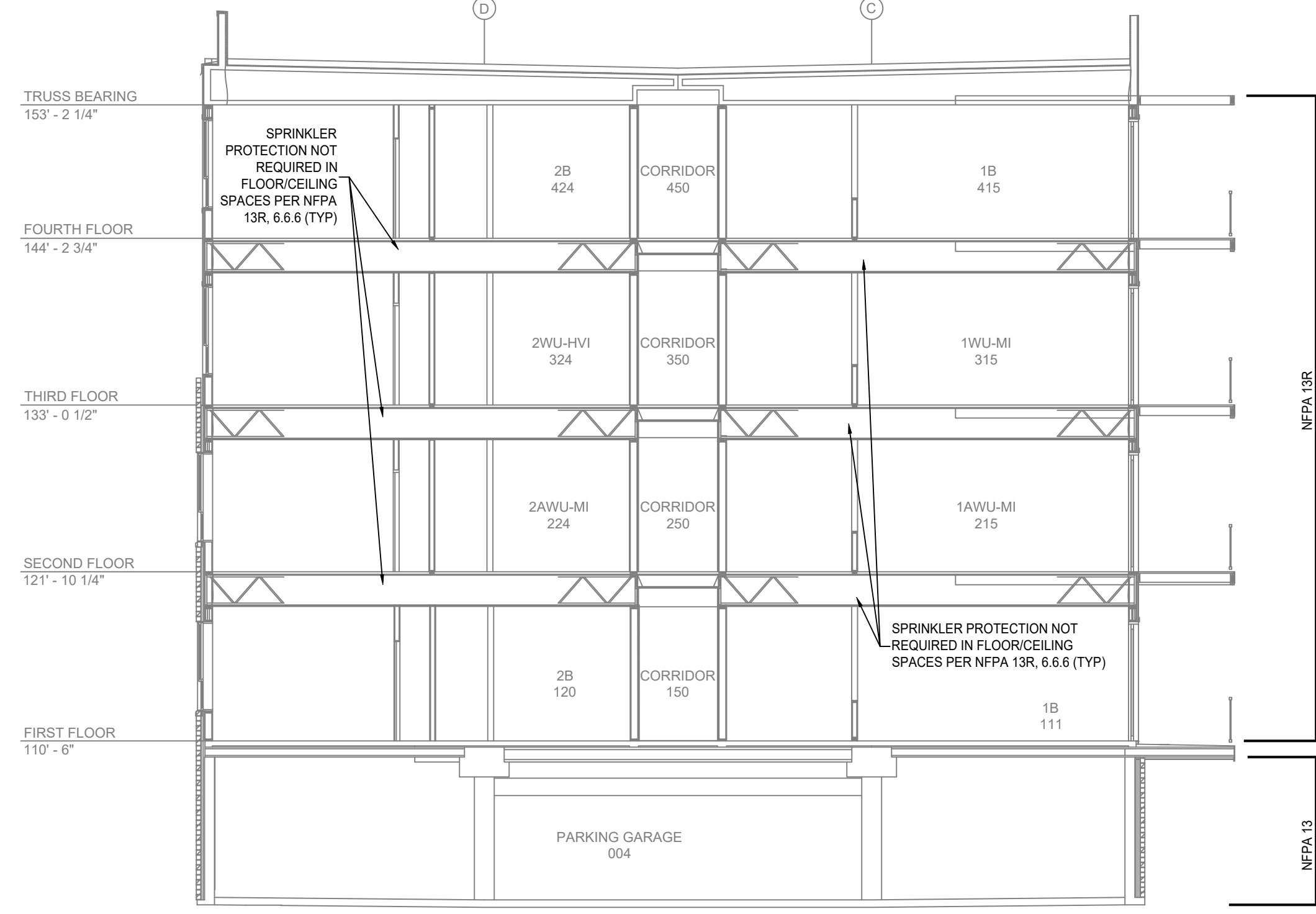
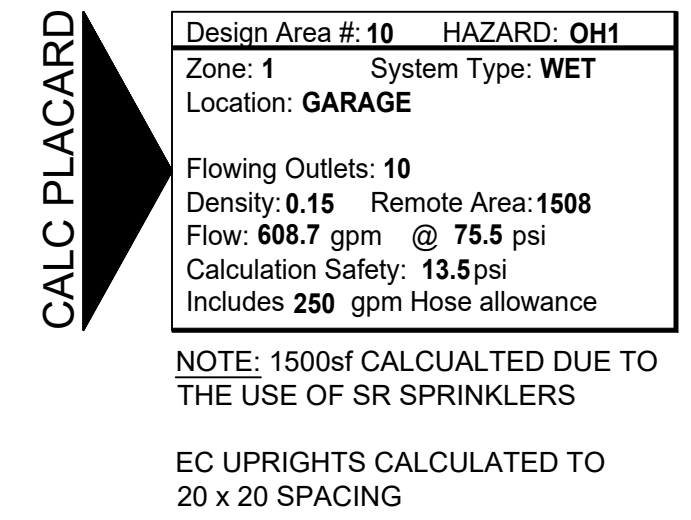
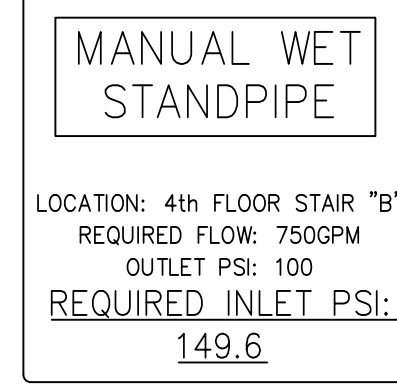


GENERAL NOTES

- INTERNATIONAL BUILDING CODE (2015)
 - OCCUPANCY S-2 (GROUND FLOOR), R-2 (1ST - 4TH FLOOR)
 - TYPE OF CONSTRUCTION: A - GROUND FLOOR, V-A (1ST - 4TH FLOOR)
 - SPRINKLERED AREAS (APPROXIMATE - SEE ARCHITECTURAL PLANS FOR ACTUAL)
 - GROUND LEVEL = 24,837 S.F. - ZONE #1
 - 1ST FLOOR = 24,312 S.F. - ZONE #2
 - 2ND FLOOR = 24,312 S.F. - ZONE #3
 - 3RD FLOOR = 24,312 S.F. - ZONE #4
 - 4TH FLOOR = 24,312 S.F. - ZONE #4
 - TOTAL = 122,065 S.F.
 - INSTALLATION STANDARDS: SPRINKLER SYSTEM DESIGNED AND INSTALLED PER NFPA-13 (2013) (GROUND FLOOR, NFPA-13R (2013) (1ST - 4TH FLOOR), NFPA-14 (2013))
- SPRINKLER PIPE TYPES:
 - 1" BRANCH LINES TO BE BLAZEMASTER CPVC PIPING WITH CEMENTED FITTINGS
 - 1/2" THROUGH 2" MAIN & BRANCH LINES TO BE BLAZEMASTER CPVC PIPING WITH CEMENTED FITTINGS
 - 1" BRANCH LINES TO BE BK SCHEDULE 40 PIPING WITH THREADED FITTINGS
 - 1/2" THROUGH 4" MAIN & BRANCH LINES TO BE BK SCHEDULE 16 PIPING WITH GROOVED FITTINGS
 - MAIN & BRANCH LINES TO BE ROLL-GROOVED BK SCHEDULE 16 PIPING
- DESIGN CRITERIA
 - LIGHT HAZARD AREAS DESIGNED TO DELIVER 0.15 GPM/S.F. OVER THE MOST DEMANDING 1500 S.F.
 - PRIMARY HAZARD GROUP 1 AREAS DESIGNED TO DELIVER 0.15 GPM/S.F. OVER THE MOST DEMANDING 1500 S.F.
 - BATHROOMS UNDER 55 S.F. NO COVERAGE REQUIRED PER NFPA-13R 6.6.12, TYP.
 - CLOSETS UNDER 24 S.F. NO COVERAGE REQUIRED PER NFPA-13R 6.6.3, TYP.
- NOTES:
 - ALL MATERIAL TO BE NEW AND MEET U.L. STANDARDS
 - HANGERS TO BE INSTALLED IN ACCORDANCE WITH NFPA 13 (YEAR) - SEE PLAN FOR HANGING REQ.
 - FITTER TO FIELD LOCATE ANY AUXILIARY DRAINS NEEDED
- SYMBOLS USED ON DRAWINGS:
 - 6.10" PIPE ELEVATION A.F.F.
 - 6.12" PIPE ELEVATION BELOW B.O.D.
 - ROOM HAZARD CLASSIFICATION (ALL ROOMS ARE CONSIDERED LIGHT HAZARD UNLESS NOTED)
 - HYDRAULIC CALCULATION JUNCTION POINT
 - 6'-0" CEILING HEIGHT
- SCOPE OF WORK:
 - TO INSTALL A NEW FIRE SPRINKLER AND STANDPIPE SYSTEM IN THE DRIFTLASS APARTMENT BUILDING. THE NEW SYSTEM WILL BE ZONED PER FLOOR FED WITH CPVC ON ALL RESIDENTIAL FLOORS DESIGNED TO NFPA 13R. THE TOP 2 FLOORS WILL BE ZONED TOGETHER. PENDENT SPRINKLERS WILL BE INSTALLED AT THE FIRST, THIRD FLOORS. THE 4TH FLOOR WILL BE "BRIDGED" UP THROUGH INTERIOR WALLS WITH SIDEWALLS ON THE TOP FLOOR.
 - ALL AREAS OF THE BUILDING TO BE INSTALLED AND COVERED IN ACCORDANCE WITH THE LOCAL AUTHORITY HAVING JURISDICTION AND PER NFPA 13A-13R (2013)

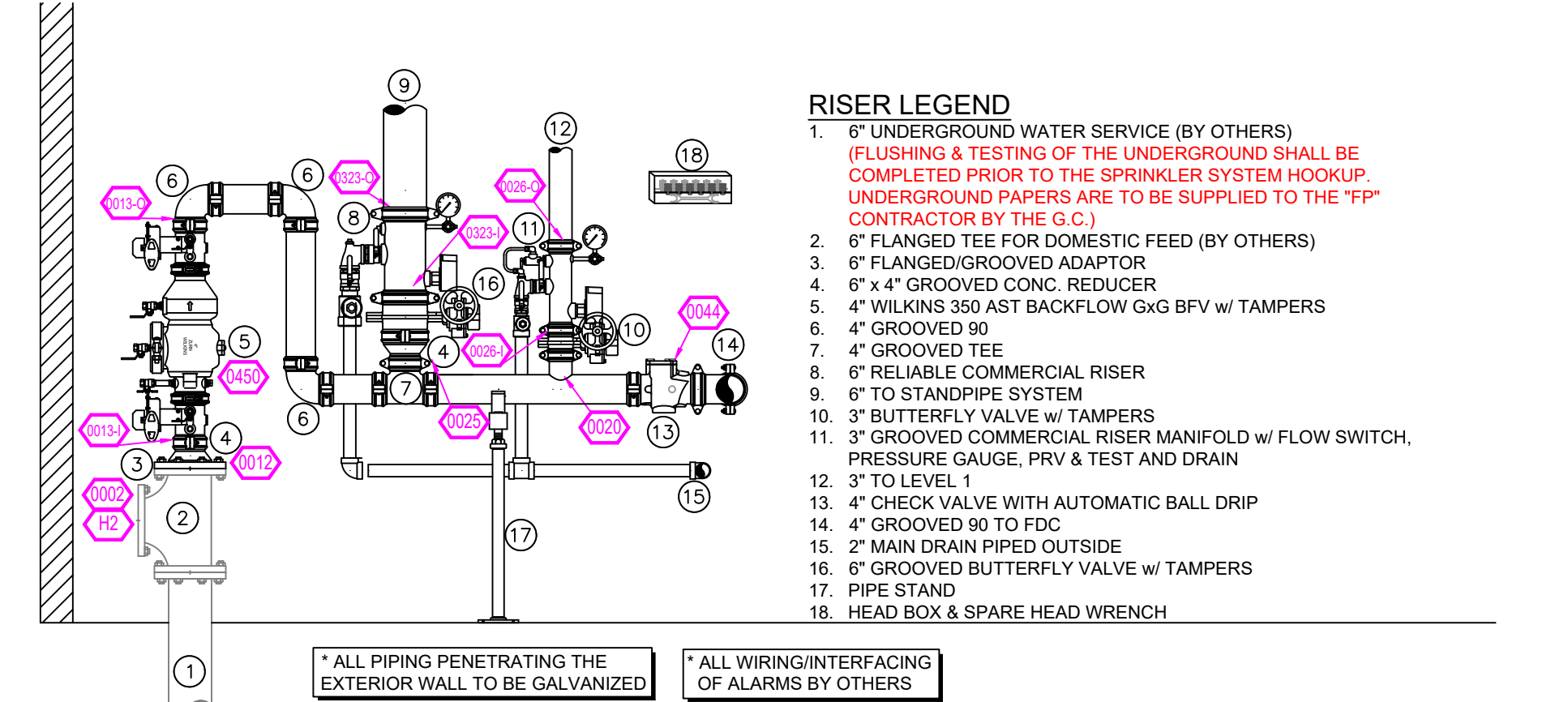
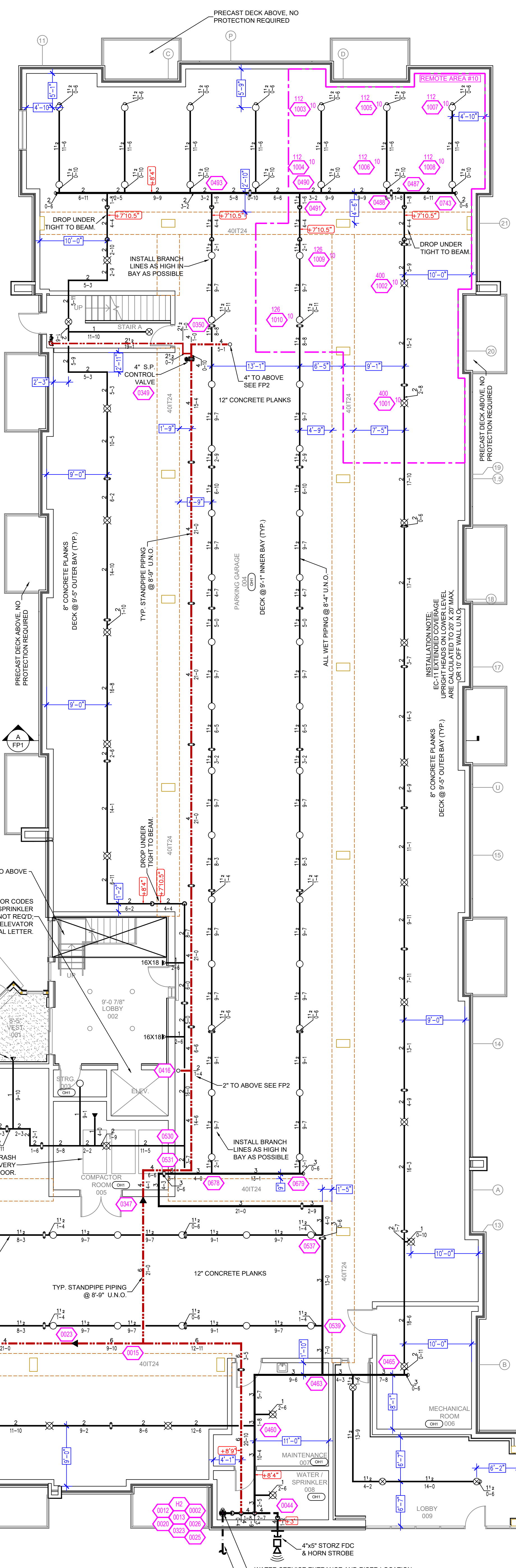
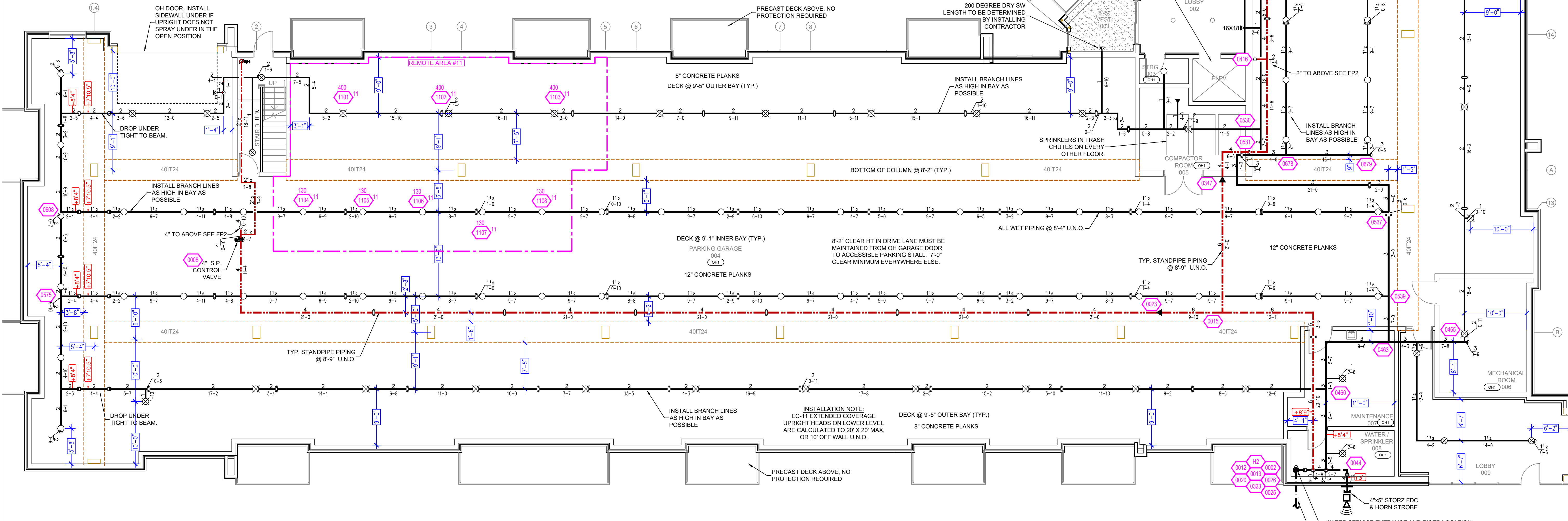
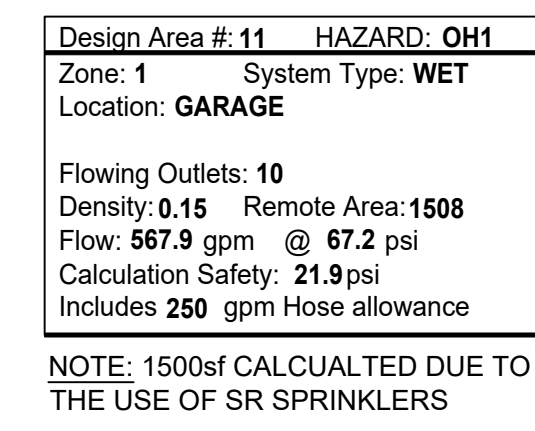


A BUILDING SECTION
SCALE: 1/8" = 1'-0"

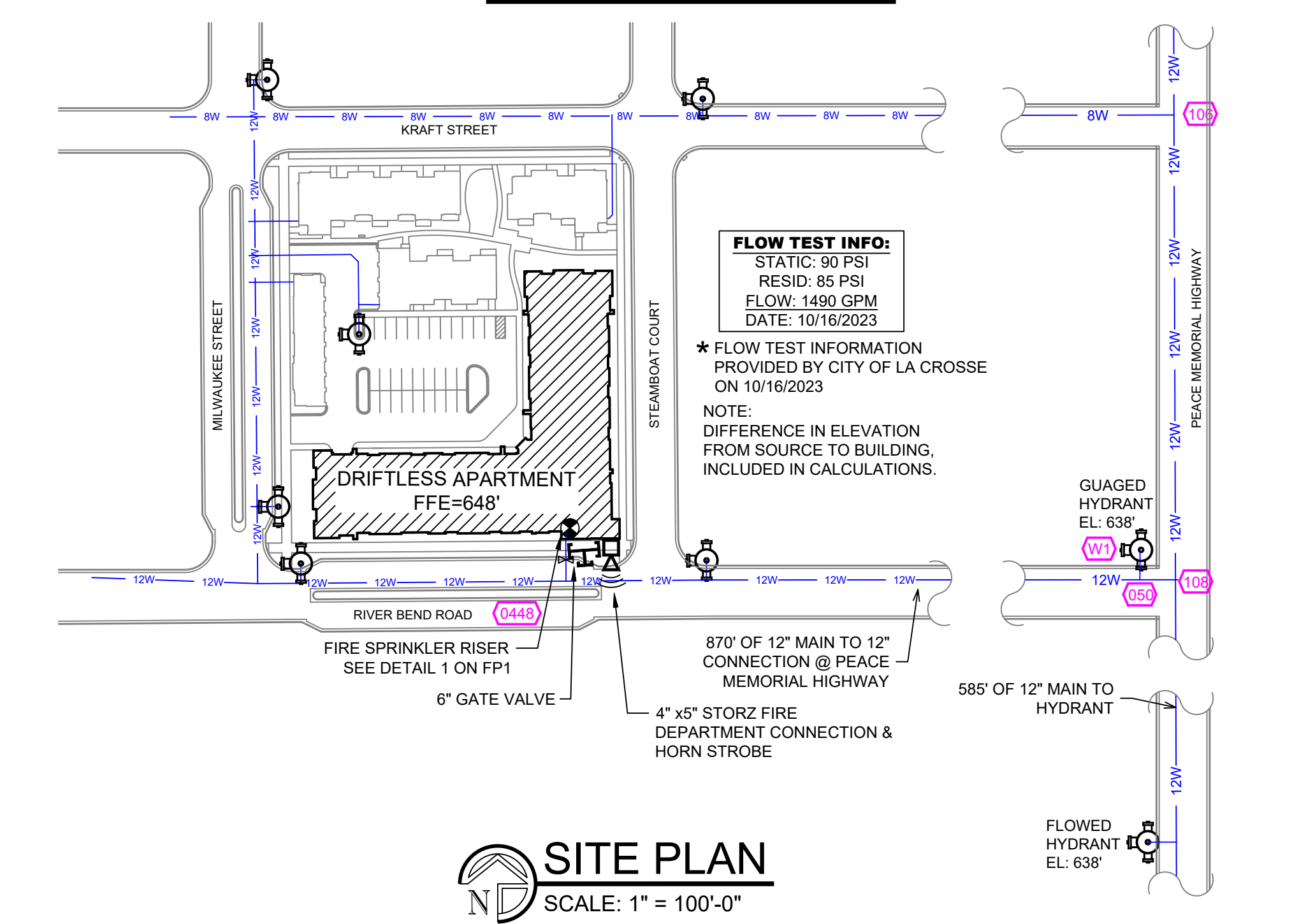
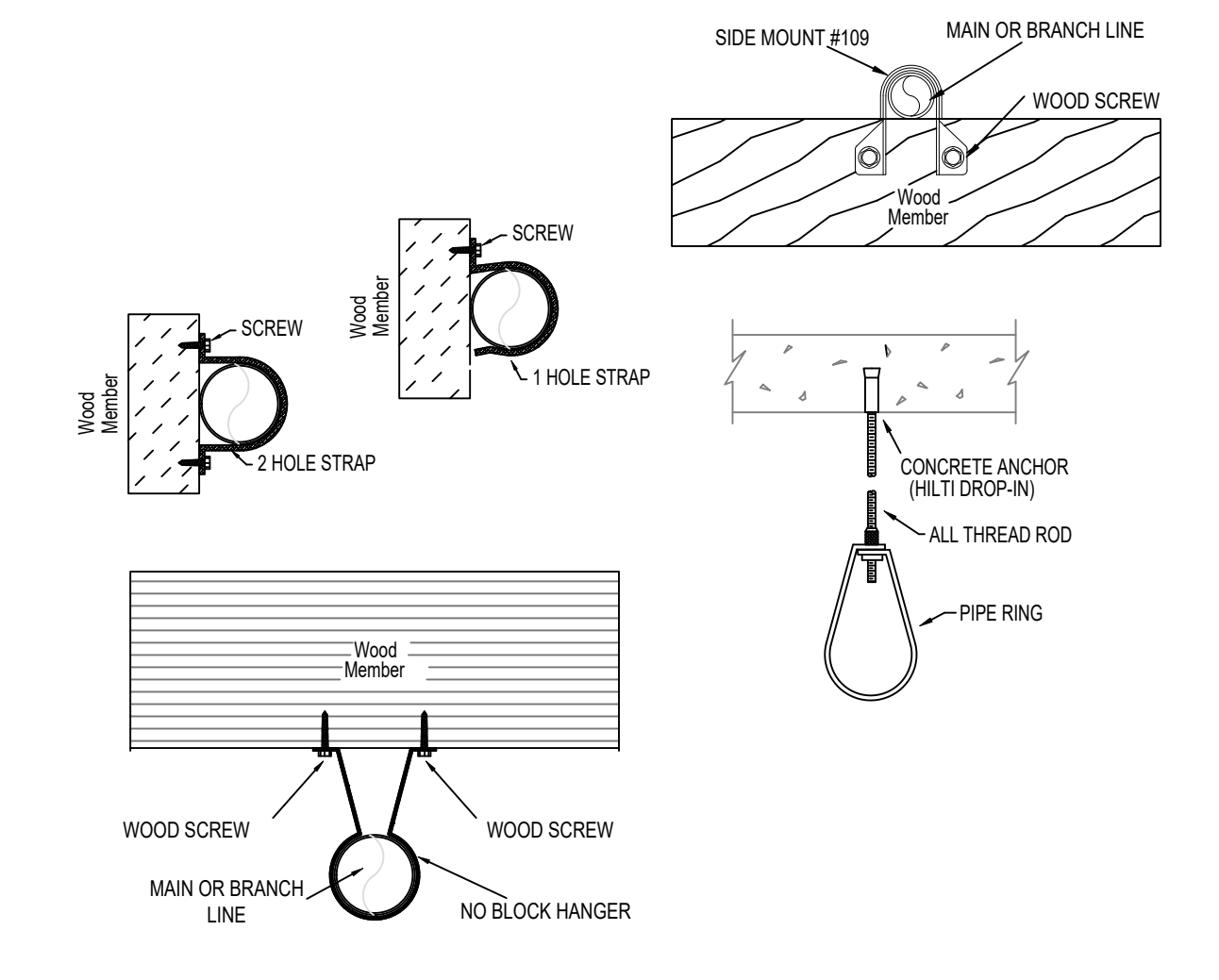


IDENT	POSITION	FINISH	TEMP	K	WPT	SN	MFG.	MODEL#	DESCRIPTION	SPACING
17	UPRIGHT	BRASS	200	5.40	1/2"	RA145	RELIABLE	F1R66	NONE	20x20 FT.
86	UPRIGHT	BRASS	200	5.80	1/2"	RA1375	RELIABLE	F1R66	NONE	130 SQ.FT.
49	UPRIGHT	BRASS	200	11.20	3/4"	RA1726	RELIABLE	J112	NONE	400 SQ.FT.
18	SIDEWALL	WHITE	200	5.40	1/2"	RA124	RELIABLE	RA124	HB	14'x14'
28	SIDEWALL	WHITE	175	4.40	1/2"	RA1531	RELIABLE	F1 RES	HB	16'x16' UNO.
11	SIDEWALL	WHITE	155	5.80	1/2"	RA1533	RELIABLE	F1 RES	HB	16'x24' UNO.
480	PENDENT	WHITE	155	4.40	1/2"	RA1516	RELIABLE	F1 RES	SEM-RECESSED	20'x20'
74	PENDENT	WHITE	175	4.90	1/2"	RA1516	RELIABLE	F1 RES	SEM-RECESSED	20'x20'
200	SIDEWALL	WHITE	155	4.40	1/2"	RA1531	RELIABLE	F1 RES	HB	16'x16' UNO.
20	SIDEWALL	WHITE	200	5.80	1/2"	RA145	RELIABLE	F1R66	HB	10'x10'
14	PENDENT	WHITE	200	5.80	1/2"	RA144	RELIABLE	F1R66	SEM-RECESSED	20x20 FT. (OH)
1122	TOTAL									130 SQ.FT. (OH)

SPRINKLER LEGEND



NFPA 13 STEEL PIPE HANGER SPACING		NFPA 13 CPVC PIPE HANGER SPACING	
NOMINAL SIZE (INCHES)	MAX SPACING (FEET)	NOMINAL SIZE (INCHES)	MAX SPACING (FEET)
1"	12'-0"	3/4"	5'-0"
1-1/4"	12'-0"	1"	6'-0"
1-1/2"	15'-0"	1-1/4"	6'-6"
2"	15'-0"	1-1/2"	7'-0"
2-1/2"	15'-0"	2"	8'-0"
3"	15'-0"		
4"	15'-0"		



NO.	REVISIONS	BY	DATE	GENERAL NOTES
1				SYSTEM REVIEW PER NFPA 13 & 13R (2013)
2				ALL SYSTEM MATERIALS AND INSTALLATION PER NFPA-13 (2013)
3				PIPE SPECIFICATIONS: 1/2" - 2" BK SCHEDULE 40 CPVC PIPE
4				1/2" - 2" BK SCHEDULE 16 CPVC PIPE
5				FITTING SPECIFICATIONS: SCHEDULE 40 DUCTILE IRON, GROOVED - DUCTILE IRON
6				SPRINKLER HEADS: 1/2" - 2" BK SCHEDULE 40 DUCTILE IRON
7				COULDS: ALL (C) UNLESS NOTED WITH SYMBOL

AREA:	TITLE/DETAILS	PROPERTY:	SHEET/DRAWING NO.
DR: J. V. G. CHKD: J.B.		PROJECT:	FP1 OF 5
SCALE: 1/8" = 1'-0"		ADDRESS:	323 RIVER BEND ROAD, LA CROSSE, WI 54603
DATE: 12/11/23		AREA:	TITLE PAGE AND DETAILS
CAD FILE: 8011-23.FP			PROJECT REV: 8011-23

ITEM	QTY	POSITION	FINISH	TEMP	R	MPY	SR	SPC	MODEL#	ESCORT/NOON	SPACING
7	1	UPRIGHT	BRASS	200	5.80	1/2"	RA1475	RELIABLE	F1196	NONE	225 SQ.FT.
15	1	UPRIGHT	BRASS	200	5.80	1/2"	RA1375	RELIABLE	F1196	NONE	120 SQ.FT.
41	1	UPRIGHT	BRASS	200	11.20	3/4"	RA7306	RELIABLE	J112	NONE	400 SQ.FT.
39	1	SIDEWALL	WHITE	200	5.80	1"	RS734	RELIABLE	RS734	HB	143.14
28	1	SIDEWALL	WHITE	175	4.40	1/2"	RA3331	RELIABLE	F1195	HB	163.16 U.N.O.
11	1	SIDEWALL	WHITE	155	5.80	1/2"	RA3333	RELIABLE	F1195	HB	163.24 U.N.O.
149	1	PENDENT	WHITE	155	4.90	1/2"	RA3316	RELIABLE	F1195	SEM-RECESSED	20.027
74	1	PENDENT	WHITE	175	4.90	1/2"	RA3316	RELIABLE	F1195	SEM-RECESSED	20.027
205	1	SIDEWALL	WHITE	155	4.40	1/2"	RA3331	RELIABLE	F1195	HB	163.16 U.N.O.
20	1	SIDEWALL	WHITE	200	5.80	1/2"	RA3333	RELIABLE	F1196	HB	163.24
58	1	PENDENT	WHITE	200	5.80	1/2"	RA1414	RELIABLE	F1195	SEM-RECESSED	225 SQ.FT. (LH)
1122		TOTAL									130 SQ.FT. (OH)

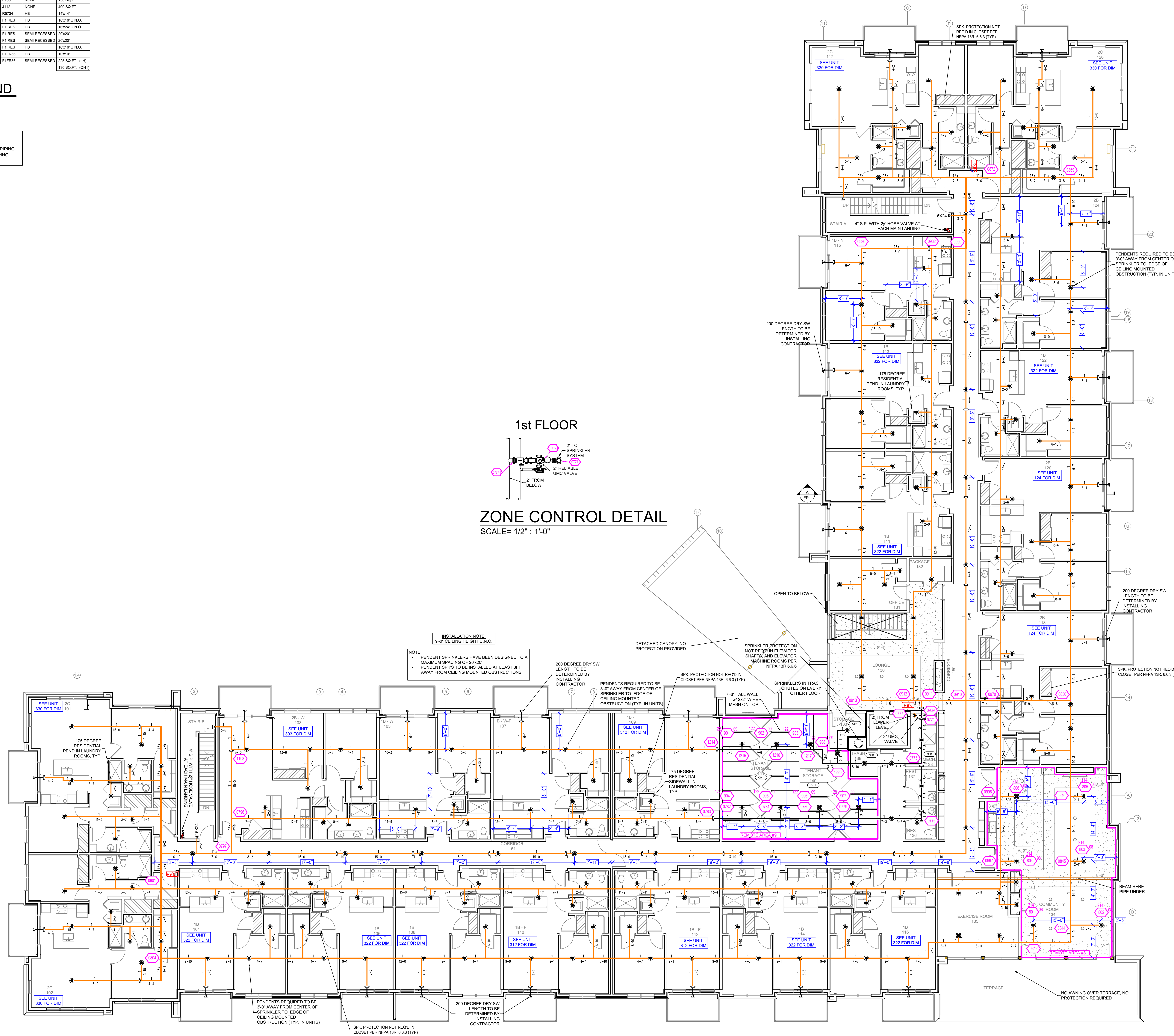
SPRINKLER LEGEND

PIPE LEGEND	
	BLACK STEEL WET FIRE SPRINKLER PIPING
	CPVC BLAZEMASTER SPRINKLER PIPING
	STANDPIPE PIPING

1st FLOOR

ZONE CONTROL DETAIL

SCALE = 1/2" = 1'-0"



FIRST FLOOR FIRE SPRINKLER PLAN
SCALE: 1/8" = 1'-0"

Design Area # 8 HAZARD, OH
Zone 2 System Type: WET
Location: TENANT STORAGE
Flowing Outlets: 8
Density: 0.15 Remote Area: 976
Flow: 431.6 gpm @ 66.4 psi
Calculation Safety: 24.1 psi
Includes 275 gpm hose allowance

NOTE: CALCULATED PER ROOM DESIGN METHOD 11.2.3.3(5)
THE WALLS FOR THE STORAGE ROOM ARE RATED AT 1-HOUR WHILE THE DOOR IS RATED AT 20 MINUTES & IS SELF-CLOSING PER NFPA 13 SEC. 11.2.3.3(5) THE DOOR IS TO BE AUTOMATIC OR SELF-CLOSING WITH THE APPROPRIATE FIRE RESISTANCE RATING FOR THE ENCLOSURE
DOMESTIC DEMAND OF 275 GPM INCLUDED AT THE POINT OF CONNECTION TO THE DOMESTIC WATER DUE TO THE USE OF A COMBINED WATER SERVICE

Design Area # 8 HAZARD, LIGHT
Zone 2 System Type: WET
Location: COMMUNITY ROOM
Flowing Outlets: 6
Density: 0.10 Remote Area: 976
Flow: 423.2 gpm @ 67.9 psi
Calculation Safety: 21.7 psi
Includes 275 gpm hose allowance

NOTE: 1500M REDUCED BY 40% TO 900M DUE TO CEILING HEIGHT PER NFPA 13 FIG. 11.2.3.2.3.1
DOMESTIC DEMAND OF 275 GPM INCLUDED AT THE POINT OF CONNECTION TO THE DOMESTIC WATER DUE TO THE USE OF A COMBINED WATER SERVICE

NO.	REVISIONS	BY	DATE	GENERAL NOTES
1				SYSTEM REVIEW PER NFPA 13 & 2020 IFC
2				ALL WET PIPE MATERIAL AND SIZE SHALL BE AS PER NFPA-13 (2015)
3				PIPE SPECIFICATIONS = 1/2" - 2" 805/810/CPVC PIPE
4				2" - 4" 150 LB. STEEL PIPE
5				FITTING SPECIFICATIONS = CASTLE IRON, GROOVED - DUCTILE IRON
6				FLOWN @ INDICATES HPC CALC POINT
7				COULDS ALL @-C@ UNLESS NOTED WITH SYMBOL

AREA:	TITLE/DETAILS	PROPERTY	SHEET/DRAWING No.
DR: J. V. G. CHKD: J.B.	PROJECT:	323 RIVER BEND ROAD, LA CROSSE, WI 54603	FP2 OF 5
SCALE: 1/8" = 1'-0"	ADDRESS:	323 RIVER BEND ROAD, LA CROSSE, WI 54603	PROJECT REV
DATE: 12/11/23	AREA:	FIRST FLOOR FIRE PROTECTION PLAN	8011-23
CAD FILE: 8011-23.FP			

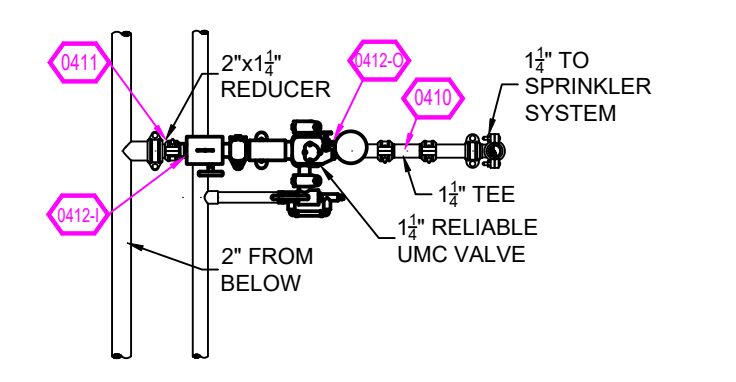
SYM	QTY	POSITION	FINISH	TEMP	R	NPT	SN	MFG	MODEL#	DESCRIPTION	SPACING
17	1	UPRIGHT	BRASS	200	5.00	1/2"	RA1415	RELIABLE	F1FR66	NONE	235 SQ.FT.
18	1	UPRIGHT	BRASS	200	5.00	1/2"	RA1275	RELIABLE	F196	NONE	130 SQ.FT.
40	1	UPRIGHT	BRASS	200	11.25	3/4"	RA7206	RELIABLE	J112	NONE	400 SQ.FT.
99	1	SIDEWALL	WHITE	200	5.00	1"	RA7204	RELIABLE	RD7M	HB	184.4"
120	1	SIDEWALL	WHITE	175	4.40	1/2"	RA3331	RELIABLE	F1RES	HB	18.95" U.N.O.
141	1	SIDEWALL	WHITE	155	5.80	1/2"	RA3333	RELIABLE	F1RES	HB	18.95" U.N.O.
149	1	PENDENT	WHITE	155	4.90	1/2"	RA3316	RELIABLE	F1RES	SEM-RECESSED	27.20"
174	1	PENDENT	WHITE	175	4.00	1/2"	RA3316	RELIABLE	F1RES	SEM-RECESSED	27.20"
200	1	SIDEWALL	WHITE	155	4.40	1/2"	RA3331	RELIABLE	F1RES	HB	18.95" U.N.O.
201	1	SIDEWALL	WHITE	200	5.00	1/2"	RA1435	RELIABLE	F1FR66	HB	17.91"
59	1	PENDENT	WHITE	200	5.00	1/2"	RA1414	RELIABLE	F1FR66	SEM-RECESSED	23.50 SQ.FT. L.H.
1122		TOTAL									130 SQ.FT. (O.H.)

SPRINKLER LEGEND

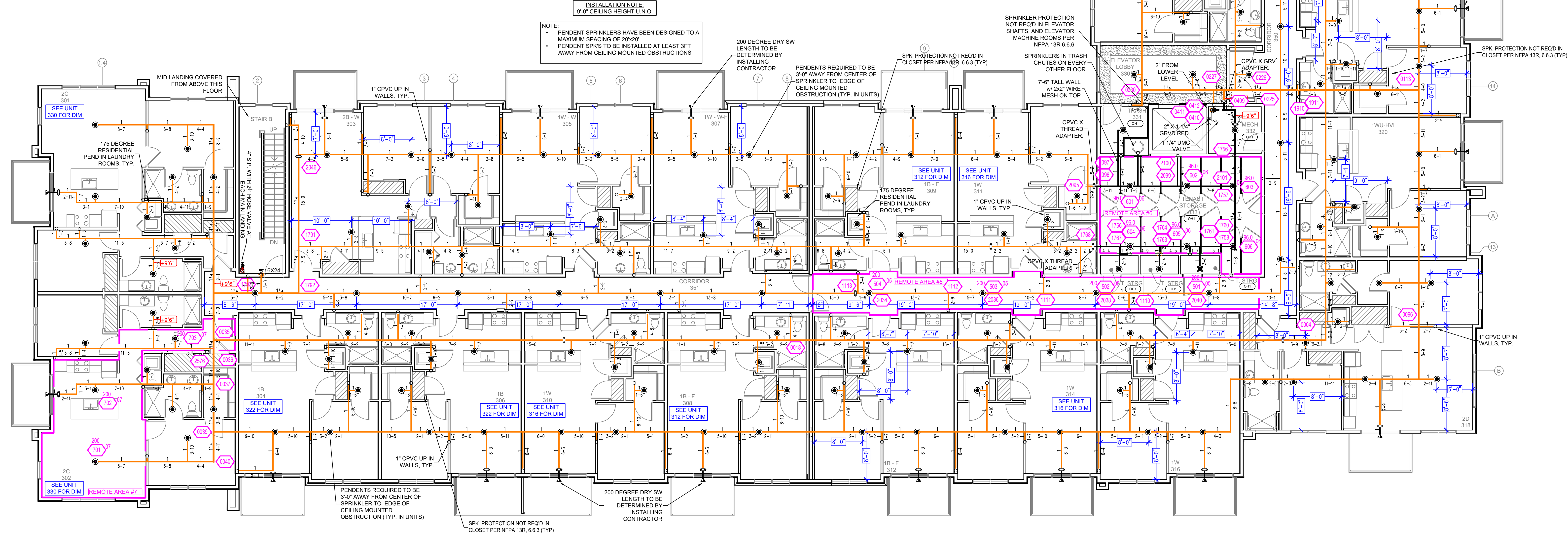
PIPE LEGEND

- BLACK STEEL WET FIRE SPRINKLER PIPING
- CPVC BLAZEMASTER SPRINKLER PIPING
- STANDPIPE PIPING

3rd FLOOR



ZONE CONTROL DETAIL
SCALE= 1/2" : 1'-0"



Design Area # 6 HAZARD: LIGHT
Zone: 4 System Type: WET
Location: CORRIDOR 350
Flowing Outlets: 4
Density: 0.10 Remote Area: 433
Flow: 385.9 gpm @ 74.8 psi
Calculation Safety: 14.8 psi
Includes 275 gpm Hose allowance
NOTE: CORRIDOR CALC PER NFPA 13R 7.2.4.
DOMESTIC DEMAND OF 275 GPM INCLUDED AT THE POINT OF CONNECTION TO THE DOMESTIC WATER DUE TO THE USE OF A COMBINED WATER SERVICE.

Design Area # 8 HAZARD: O.H.
Zone: 4 System Type: WET
Location: TENANT STORAGE 333
Flowing Outlets: 6
Density: 0.15 Remote Area: 462
Flow: 366.6 gpm @ 51.3 psi
Calculation Safety: 38.2 psi
Includes 275 gpm Hose allowance
NOTE: CALCULATED PER ROOM DESIGN METHOD 11.2.3.3(5).
THE WALLS FOR THE STORAGE ROOM ARE RATED AT 1-HOUR WHILE THE DOOR IS RATED AT 20 MINUTES & IS SELF-CLOSING. PER NFPA 13 SEC. 11.2.3.3(5) THE DOOR IS TO BE AUTOMATIC OR SELF-CLOSING WITH THE APPROPRIATE FIRE RESISTANCE RATING FOR THE ENCLOSURE.
DOMESTIC DEMAND OF 275 GPM INCLUDED AT THE POINT OF CONNECTION TO THE DOMESTIC WATER DUE TO THE USE OF A COMBINED WATER SERVICE.

Design Area # 7 HAZARD: RES
Zone: 4 System Type: WET
Location: UNIT 302
Flowing Outlets: 3
Density: 0.10 Remote Area: 455
Flow: 335.8 gpm @ 59.5 psi
Calculation Safety: 38.2 psi
Includes 275 gpm Hose allowance
NOTE: CALCULATED THE 3 MOST DEMANDING RESIDENTIAL SPRINKLERS IN A COMPARTMENT PER NFPA 13R 7.1.1.3.1.
DOMESTIC DEMAND OF 275 GPM INCLUDED AT THE POINT OF CONNECTION TO THE DOMESTIC WATER DUE TO THE USE OF A COMBINED WATER SERVICE.

THIRD FLOOR FIRE SPRINKLER PLAN
SCALE: 1/8" = 1'-0"

NO.	REVISIONS	BY	DATE

- GENERAL NOTES**
1. SYSTEM REQUIREMENTS PER NFPA 13 & 13R (2019)
 2. ALL WET PIPE MATERIALS AND FITTINGS SHALL BE LISTED PER NFPA-13 (2019)
 3. PIPE SPECIFICATIONS: 1/2" - 2" - 304/316 CPVC PIPE
 4. FITTING SPECIFICATIONS: 304/316 DUCTILE IRON
 5. SYMBOLS: (S) INDICATES WET CALC POINT
 6. COULDS ALL (C) UNLESS NOTED WITH SYMBOL.

AREA: TITLE/DETAILS	PROPERTY	SHEET/DRAWING No.
DR: J. V. G. CHKD: J.B.	PROJECT:	FP4 OF 5
SCALE: 1/8" = 1'-0"	ADDRESS:	PROJECT REV
DATE: 12/11/23	AREA:	8011-23
CAD FILE: 8011-23.FP		

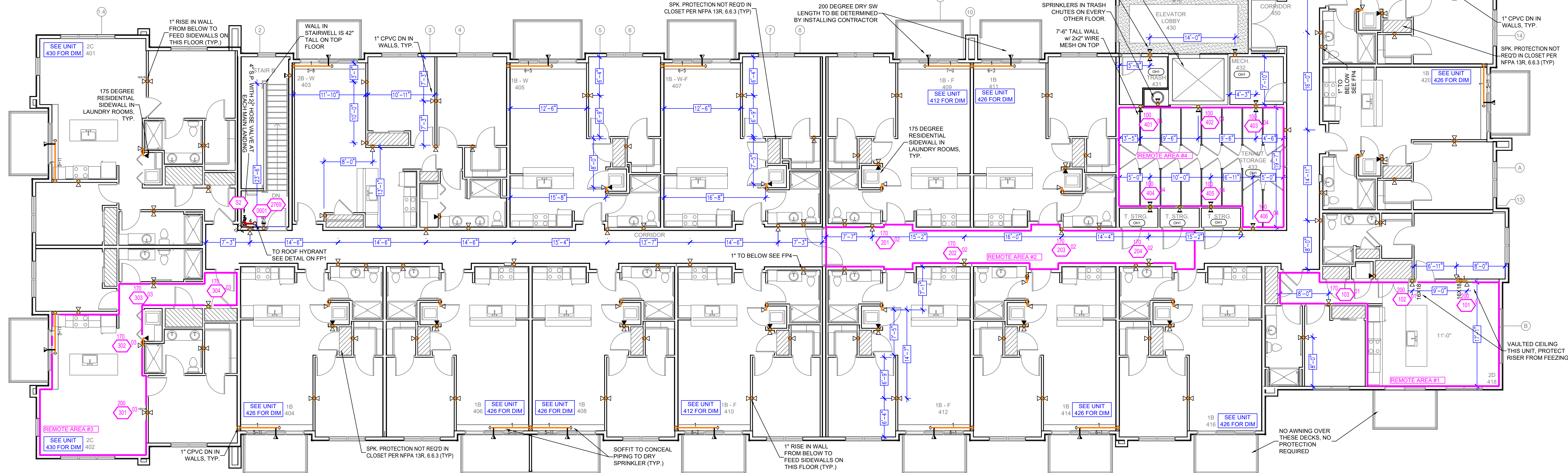
DRIFTLESS APARTMENT
323 RIVER BEND ROAD, LA CROSSE, WI 54603
THIRD FLOOR FIRE PROTECTION PLAN

SPK	QTY	POSITION	MATERIAL	TEMP	K	NPT	SN	MFG	MODEL#	ESD/CHEON	SPACING
1	1	UPRIGHT	BRASS	200	1.60	1/2"	RA1470	RELIABLE	F1PFS6	NONE	200 SQ.FT.
15	15	UPRIGHT	BRASS	200	5.60	1/2"	RA1375	RELIABLE	F150	NONE	130 SQ.FT.
40	40	UPRIGHT	BRASS	200	11.20	3/4"	RA1726	RELIABLE	J112	NONE	400 SQ.FT.
10	10	SIDEWALL	WHITE	200	5.60	1"	RA1074	RELIABLE	RD304	HB	15'x16'
10	10	SIDEWALL	WHITE	175	4.40	1/2"	RA1031	RELIABLE	F1 RES	HB	15'x16' U.N.O.
11	11	SIDEWALL	WHITE	155	5.80	1/2"	RA1033	RELIABLE	F1 RES	HB	15'x24' U.N.O.
100	100	PENDENT	WHITE	155	4.90	1/2"	RA1018	RELIABLE	F1 RES	SEMI-RECESSED	20'x20'
74	74	PENDENT	WHITE	175	4.90	1/2"	RA1018	RELIABLE	F1 RES	SEMI-RECESSED	20'x20'
200	200	SIDEWALL	WHITE	155	4.40	1/2"	RA1031	RELIABLE	F1 RES	HB	15'x16' U.N.O.
20	20	SIDEWALL	WHITE	200	5.60	1/2"	RA1435	RELIABLE	F1PFS6	HB	15'x12'
20	20	PENDENT	WHITE	200	5.60	1/2"	RA1434	RELIABLE	F1PFS6	SEMI-RECESSED	200 SQ.FT. (LH)
1122	TOTAL										130 SQ.FT. (CH)

SPRINKLER LEGEND

PIPE LEGEND

- BLACK STEEL WET FIRE SPRINKLER PIPING
- CPVC BLAZEMASTER SPRINKLER PIPING
- STANDPIPE PIPING



INSTALLATION NOTE
 9/8" CEILING HEIGHT U.N.O.

NOTE:

- PENDENT SPRINKLERS HAVE BEEN DESIGNED TO A MAXIMUM SPACING OF 20'x20'
- SIDEWALL SPRINKLERS PLACED 6'-12" BELOW CEILING & HAVE BEEN DESIGNED TO A MAXIMUM SPACING OF 16'x16' U.N.O.

Design Area # 1 HAZARD: RES
 Zone: 4 System Type: WET
 Location: UNIT 418

Flowing Outlets: 3
 Density: 0.10 Remote Area: 430
 Flow: 337 gpm @ 67.8 psi
 Calculation Safety: 21.9 psi
 Includes 275 gpm Hose allowance

NOTE: CALCULATED THE 3 MOST DEMANDING RESIDENTIAL SPRINKLERS IN A COMPARTMENT PER NFPA 13R 7.1.1.3.1

DOMESTIC DEMAND OF 275 GPM INCLUDED AT THE POINT OF CONNECTION TO THE DOMESTIC WATER DUE TO THE USE OF A COMBINED WATER SERVICE

Design Area # 2 HAZARD: LIGHT
 Zone: 4 System Type: WET
 Location: CORRIDOR 450

Flowing Outlets: 4
 Density: 0.10 Remote Area: 432
 Flow: 344 gpm @ 71.3 psi
 Calculation Safety: 18.3 psi
 Includes 275 gpm Hose allowance

NOTE: CORRIDOR CALC PER NFPA 13R 7.2.4

DOMESTIC DEMAND OF 275 GPM INCLUDED AT THE POINT OF CONNECTION TO THE DOMESTIC WATER DUE TO THE USE OF A COMBINED WATER SERVICE

Design Area # 3 HAZARD: RES
 Zone: 4 System Type: WET
 Location: UNIT 402

Flowing Outlets: 4
 Density: 0.10 Remote Area: 456
 Flow: 354.6 gpm @ 76.4 psi
 Calculation Safety: 13.2 psi
 Includes 275 gpm Hose allowance

NOTE: CALCULATED THE 4 MOST DEMANDING RESIDENTIAL SPRINKLERS IN A COMPARTMENT PER NFPA 13R 7.1.1.3.1

DOMESTIC DEMAND OF 275 GPM INCLUDED AT THE POINT OF CONNECTION TO THE DOMESTIC WATER DUE TO THE USE OF A COMBINED WATER SERVICE

Design Area # 4 HAZARD: OH1
 Zone: 4 System Type: WET
 Location: TENANT STORAGE 433

Flowing Outlets: 6
 Density: 0.15 Remote Area: 462
 Flow: 372.4 gpm @ 59.1 psi
 Calculation Safety: 39.5 psi
 Includes 275 gpm Hose allowance

NOTE: CALCULATED PER ROOM DESIGN METHOD 11.2.3.5(3)

THE WALLS FOR THE STORAGE ROOM ARE RATED AT 1 HOUR WHILE THE DOOR IS RATED AT 20 MINUTES & IS SELF-CLOSING PER NFPA 13 SEC. 11.2.3.5(3) THE DOOR IS TO BE AUTOMATIC OR SELF-CLOSING WITH THE APPROPRIATE FIRE RESISTANCE RATING FOR THE ENCLOSURE

DOMESTIC DEMAND OF 275 GPM INCLUDED AT THE POINT OF CONNECTION TO THE DOMESTIC WATER DUE TO THE USE OF A COMBINED WATER SERVICE

FOURTH FLOOR FIRE SPRINKLER PLAN

SCALE: 1/8" = 1'-0"

NO.	REVISIONS	BY	DATE	GENERAL NOTES
1				SYSTEM REVIEW PER NFPA 13 & 13R (2015)
2				ALL WET PIPING AND ALL STANDPIPE PER NFPA 13 (2015)
3				ALL CPVC PIPING AND ALL CPVC STANDPIPE PER NFPA 13 (2015)
4				PIPE SPECIFICATIONS = 1/2" - 2" SAE 316/316L CPVC PIPE
5				FITTING SPECIFICATIONS = 1/2" - 2" SAE 316/316L CPVC FITTING
6				FITTING SPECIFICATIONS = CASTLE IRON GROOVES - DUCTILE IRON
7				COULDS ALL (C-C) UNLESS NOTED WITH SYMBOL

AREA:	TITLE/DETAILS	PROPERTY:	SHEET/DRAWING NO.
DR: J. V. G. CHKD: J.B.	PROJECT:	DRIFTLESS APARTMENT	FP5 OF 5
SCALE: 1/8" = 1'-0"	ADDRESS:	323 RIVER BEND ROAD, LA CROSSE, WI 54603	PROJECT REV:
DATE: 12/11/23	AREA:	FOURTH FLOOR FIRE PROTECTION PLAN	8011-23
CAD FILE: 8011-23.FP			