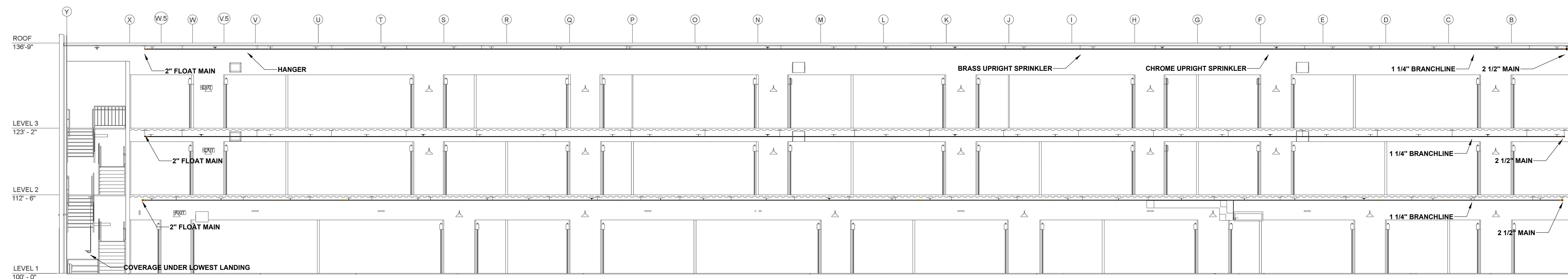
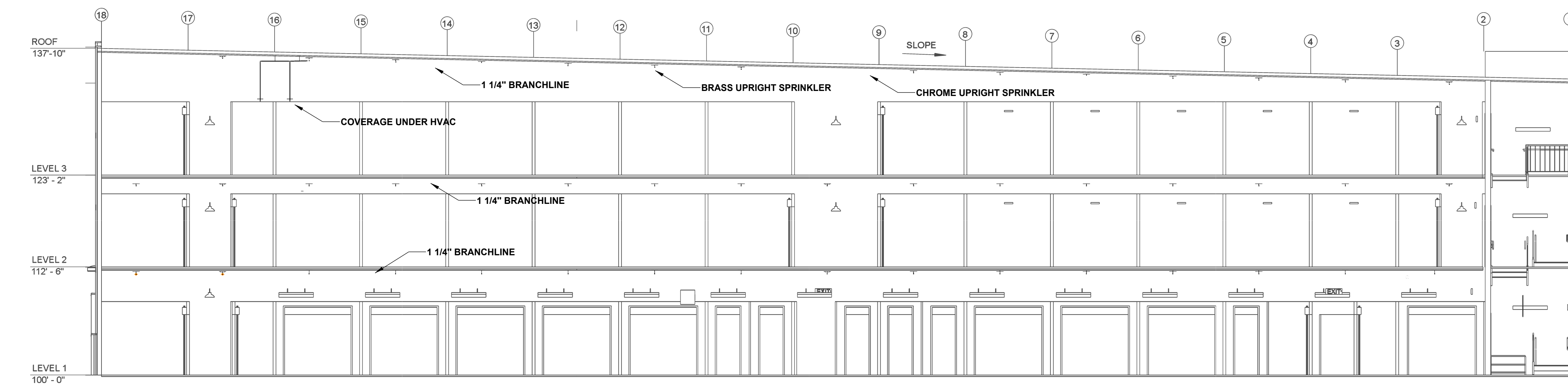


AIR VENT NOTE:

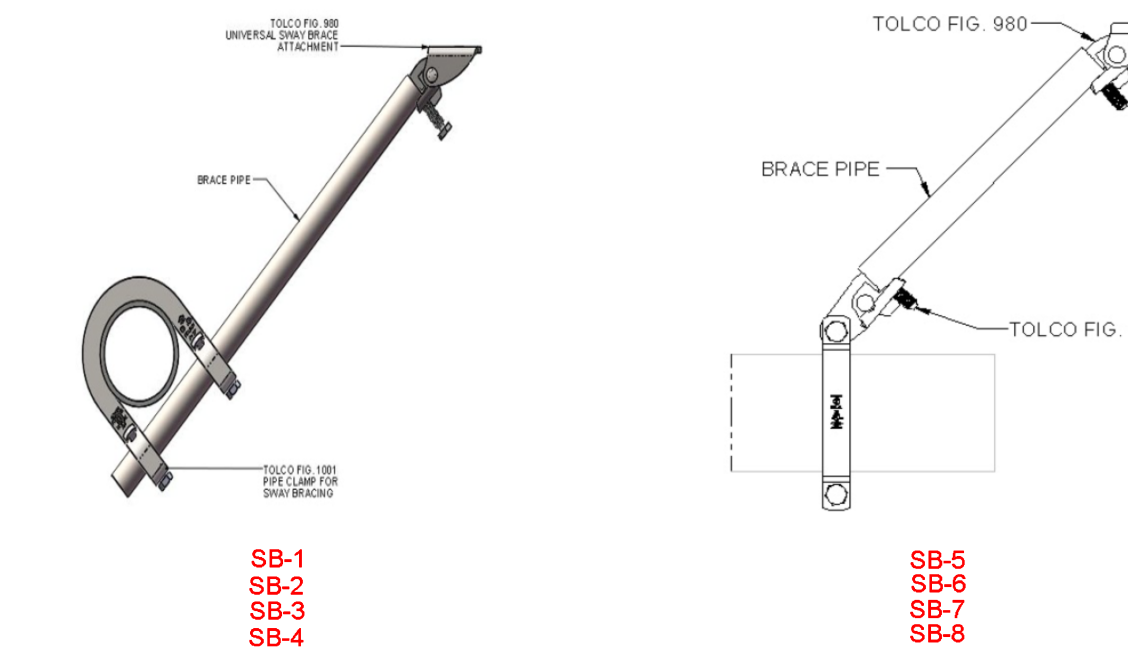
- AS STATED IN 16.7.1:
- AT THE DISCRETION OF THE INSTALLER, AUTOMATIC AIR VENTS ARE TO BE INSTALLED BY ONE OF THE FOLLOWING METHODS
- (1) MANUAL VALVE, MIN 1/2"
- (2) AUTOMATIC AIR VENT
- (3) REMOTE INSPECTOR TEST VALVE
- (4) OTHER APPROVED MEANS



B BUILDING SECTION
SCALE: 1/8" = 1'-0"



C BUILDING SECTION
SCALE: 1/8" = 1'-0"



SEISMIC BRACE DESCRIPTIONS

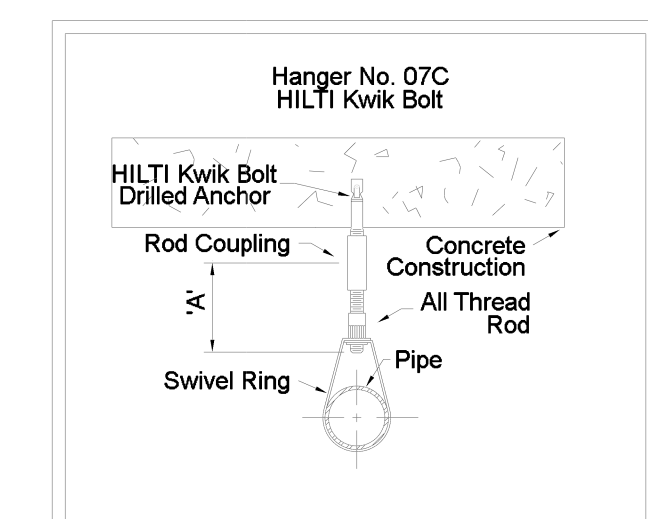
NAME	MAX SPACING	BRACE TYPE	PIPE BRACED	STRUCTURE
SB-1	10'-0"	LATERAL	2 1/2" SCH 10	CONCRETE SLAB
SB-2	10'-0"	LATERAL	2" SCH 10	CONCRETE SLAB
SB-3	40'-0"	LATERAL	4" SCH 10	CONCRETE SLAB
SB-4	10'-0"	LATERAL	3" SCH 10	CONCRETE SLAB
SB-5	80'-0"	LONGITUDINAL	2 1/2" SCH 10	CONCRETE SLAB
SB-6	80'-0"	LONGITUDINAL	2" SCH 10	CONCRETE SLAB
SB-7	60'-0"	LONGITUDINAL	4" SCH 10	CONCRETE SLAB
SB-8	80'-0"	LONGITUDINAL	3" SCH 10	CONCRETE SLAB

- SEISMIC BRANCH LINE RESTRAINT (Cp=0.84):**
 1" PIPE = 28'-0" MAX SPACING
 1-1/4" PIPE = 27'-0" MAX SPACING
 1-1/2" PIPE = 29'-0" MAX SPACING
 2" PIPE = 31'-0" MAX SPACING
- *BRANCH LINE RESTRAINT MAY BE OMITTED WITH CPVC HANGERS LISTED TO PROVIDE RESTRAINT PER NFPA 13 SEC. 18.6.1(4).
- SEISMIC KEY:**
 LATERAL BRACE
 LONGITUDINAL BRACE
 FOUR-WAY BRACE
 BRANCH LINE RESTRAINT

SEISMIC DETAILS

Sprinkler Legend

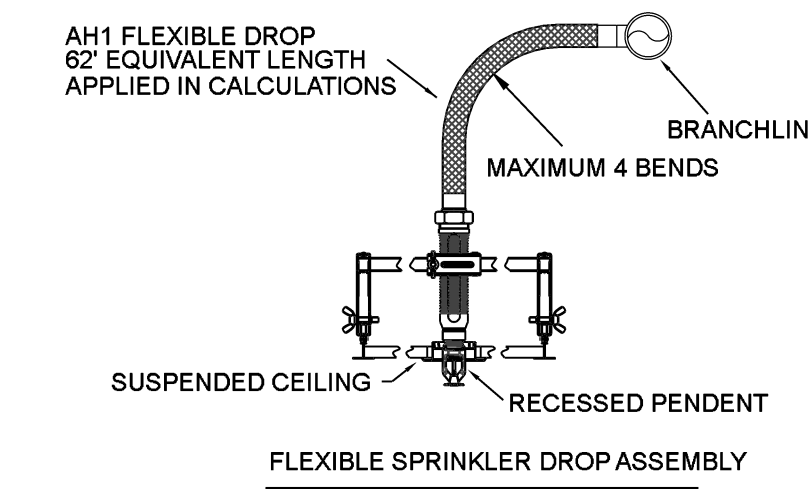
Symbol	Manufacturer	SIN	Model	Quantity	K-Factor	Type	Size	Response	Finish	Temperature	Note	
●	Reliable	RA1414	F1FR56	12	5.6	Pendent	1/2"	Quick	Chrome	200°F	RECESSED	
▶	Reliable	RA1335	F1-56 HSW	2	5.6	Horizontal Sidewall	1/2"	Standard	Brass	200°F	N/A	
○	Reliable	RA6322	F1FR80	903	8	Upright	1/2"	Quick	Brass	200°F	N/A	
○	Reliable	RA1425	F1FR56	21	5.6	Upright	1/2"	Quick	Chrome	200°F	N/A	
○	Reliable	RA6322	F1FR80	401	8	Upright	1/2"	Quick	Chrome	200°F	N/A	
				Total = 1339								



HANGER DETAILS

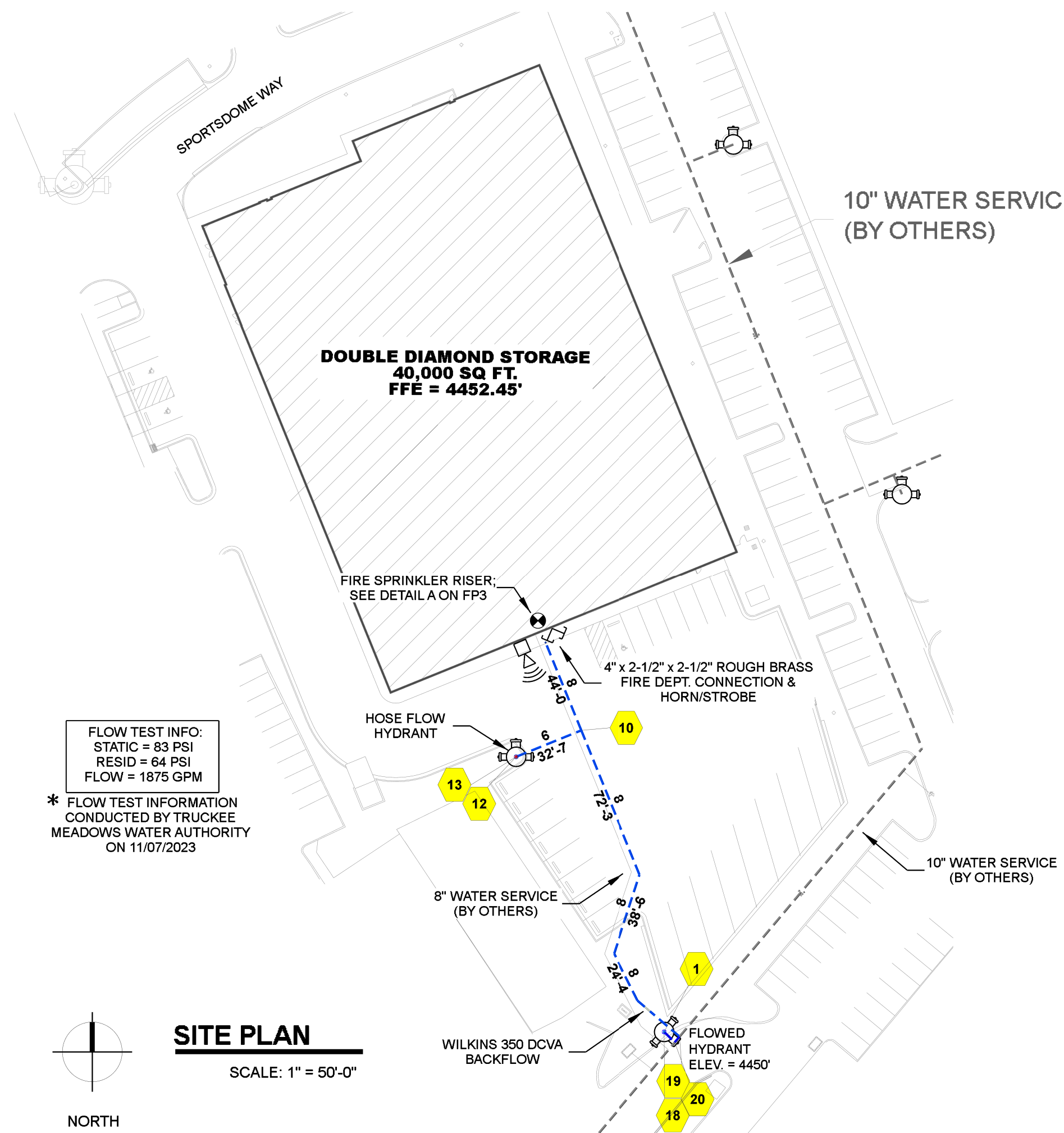
MAXIMUM DISTANCE BETWEEN HANGERS (FT.-IN.)

	3/4"	1"	1 1/4"	1 1/2"	2"	2 1/2"	3"	4"	6"	8"
STEEL PIPE EXCEPT THREADED LIGHTWALL	NA	12-0	12-0	15-0	15-0	15-0	15-0	15-0	15-0	15-0
THREADED LIGHTWALL STEEL PIPE	NA	12-0	12-0	12-0	12-0	12-0	NA	NA	NA	NA
COPPER TUBE	8-0	8-0	10-0	10-0	12-0	12-0	12-0	NA	NA	NA
BLAZEMASTER CPVC	5-6	6-0	6-6	7-0	8-0	9-0	10-0	NA	NA	NA



FLEXIBLE SPRINKLER DROP ASSEMBLY

- GENERAL INFORMATION**
- INTERNATIONAL BUILDING CODE (2018)
 - OCCUPANCY: TYPE S-1 & B
 - TYPE OF CONSTRUCTION: II-B
 - SPRINKLERED AREAS (APPROXIMATE - SEE ARCHITECTURAL PLANS FOR ACTUAL)
 - ZONE A LEVEL 1 DRY = 3,444 S.F.
 - ZONE B LEVEL 1 WET = 36,456 S.F.
 - ZONE C LEVEL 2 WET = 40,210 S.F.
 - ZONE D LEVEL 3 WET = 40,210 S.F.
 - TOTAL = 120,230 S.F.
 - DESIGN & INSTALLATION STANDARDS: NFPA-13 (2022)
 - SPRINKLER PIPE TYPES:
 - WET:
 - 2.1 1" PIPE TO BE SCHEDULE 40 BLACK STEEL W/ THREADED FITTINGS
 - 2.2 1-1/4" THROUGH 2-1/2" MAINS & BRANCH LINES TO BE BLK SCHEDULE 10 W/ GROOVED FITTINGS
 - 2.3 MAINS & BRANCH LINES TO BE ROLL-GROOVED BLK SCHEDULE 10
 - 2.4 2" AND LARGER TO USE GROOVED SHORT RADIUS FITTINGS
 - DRY:
 - 2.5 1" PIPE TO BE SCHEDULE 40 BLACK STEEL W/ THREADED FITTINGS
 - 2.6 1-1/4" THROUGH 2-1/2" MAINS & BRANCH LINES TO BE BLK SCHEDULE 10 W/ GROOVED FITTINGS
 - 2.7 MAINS & BRANCH LINES TO BE ROLL-GROOVED BLK SCHEDULE 10
 - 2.8 2" AND LARGER TO USE GROOVED SHORT RADIUS FITTINGS
 - DESIGN CRITERIA:
 - LIGHT HAZARD AREAS INCLUDE OFFICE/ADMINISTRATIVE, RESTROOMS, AND CORRIDORS
 - ORDINARY HAZARD GROUP I AREAS INCLUDE MECHANICAL AND ELECTRICAL ROOMS
 - ORDINARY HAZARD GROUP II AREAS INCLUDE ALL STORAGE UNITS & THEIR CORRIDORS
 - REMOTE AREA REDUCTIONS HAVE BEEN TAKEN WHERE APPLICABLE PER NFPA 13 SEC. 19.2.3.2.3
 - REMOTE AREA INCREASED BY 30% FOR DRY AND DOUBLE INTERLOCK PREACTION SYSTEMS PER NFPA 13 SEC. 19.2.3.2.5
 - NOTES:
 - ALL MATERIAL TO BE NEW AND MEET U.L. STANDARDS
 - ALL GARAGE DOORS ARE ROLL UP
 - HANGERS TO BE INSTALLED IN ACCORDANCE WITH NFPA 13 - SEE PLAN FOR HANGING
 - DRY SYSTEM REQUIREMENTS:
 - DRY SYSTEM PIPE SLOPE INSTALLATION
 - SPRINKLER MAINS TO BE 1/4" PER 10'-0"
 - SPRINKLER BRANCH LINES TO BE 1/2" PER 10'-0"
 - DRY SYSTEM CAPACITY
 - 162 GALLONS
 - SYMBOLS USED ON DRAWINGS:
 - ★ x x FF | PIPE ELEVATION ABOVE FINISH FLOOR
 - ★ x x TS | PIPE ELEVATION BELOW TOP OF STEEL
 - OH1 | ROOM HAZARD CLASSIFICATION (ALL ROOMS ARE CONSIDERED LIGHT HAZARD U.N.O.)
 - | HYDRAULIC CALCULATION JUNCTION POINT
 - 9'-0" | CEILING HEIGHT
 - | FIRE RATED WALL
 - | WET BLACK STEEL PIPE
 - - - | DRY BLACK STEEL PIPE
 - SCOPE OF WORK:
 - INSTALL A COMPLETE A SINGLE DRY ZONE AND 3 WET ZONES SPRINKLER SYSTEM TO COVER ALL AREAS OF BUILDING
 - ALL AREAS OF THE BUILDING TO BE INSTALLED AND COVERED IN ACCORDANCE WITH THE LOCAL AUTHORITY HAVING JURISDICTION AND PER NFPA 13



FLOW TEST INFO:
 STATIC = 83 PSI
 RESID = 64 PSI
 FLOW = 1875 GPM

* FLOW TEST INFORMATION CONDUCTED BY TRUCKEE MEADOWS WATER AUTHORITY ON 11/07/2023

HYDRAULIC SUPPLY INFORMATION

SYSTEM NOT INSTALLED	SYSTEM FULLY DESIGNED
SYSTEM NOT FULLY DESIGNED	SYSTEM FULLY DESIGNED
STATIC (PSI)	RESIDUAL (PSI)
83	64
TEST DATE:	GPM FLOWING
11/07/2023	1875
TEST LOCATION:	TEST LOCATION:
12" MAIN ON SW CORNER OF PARCEL	12" MAIN ON SW CORNER OF PARCEL
BY: TRUCKEE MEADOWS WATER AUTHORITY	BY: TRUCKEE MEADOWS WATER AUTHORITY

ISSUE / REVISION

DATE	DESCRIPTION
12/07/2023 <td>FOR APPROVAL</td>	FOR APPROVAL

NOTICE

MAINTAIN FIRE SPRINKLER SYSTEMS CONTAINING WATER ABOVE 40 DEG. F ABOVE THE OWNERS RESPONSIBILITY TO MAINTAIN AND OPERATE THE SYSTEMS. THE WET PIPE SPRINKLER SYSTEM AND IN ROOMS SUPPLY TO THE AUTOMATIC SPRINKLER SYSTEM.

PROJECT NAME:
9300 DOUBLE DIAMOND

PROJECT ADDRESS:
9300 DOUBLE DIAMOND PARKWAY, RENO NV

SHEET TITLE:
FIRE PROTECTION PLAN

AIR VENT NOTE:

AS STATED IN 16.3:
 AT THE DISCRETION OF THE
 INSTALLER, AUTOMATIC AIR VENTS
 ARE TO BE INSTALLED BY ONE OF
 THE FOLLOWING METHODS
 (1) MANUAL VALVE, MIN 1/2"
 (2) AUTOMATIC AIR VENT
 (3) REMOTE INSPECTOR TEST VALVE
 (4) OTHER APPROVED MEANS

UNOBSTRUCTED CONCRETE SLAB
 CONSTRUCTION; INSTALL
 DEFLECTOR 12" MAX BELOW DECK
 MAX SPRINKLER SPACING 130 S.F.

ALL STORAGE UNITS AND THEIR
 CORRIDORS ARE CONSIDERED
 ORDINARY HAZARD GROUP II

REMOTE AREA 1

OCCUPANCY CLASSIFICATION	Light Hazard
DENSITY (gpm/ft ²)	0.10 for 1500ft ² (Actual 952ft ²)
QUICK RESPONSE REDUCTION	12'-2 Ceiling (36.8%) 949ft ²
TOTAL HOSE STREAMS	100.0
TOTAL HEADS FLOWING	11
K-FACTOR	5.6
TOTAL WATER REQUIRED	310.9
TOTAL PRESSURE REQUIRED	40.8
BASE OF RISER (gpm)	210.9
BASE OF RISER (psi)	36.1
SAFETY MARGIN (psi)	+41.5 (50.4%)

NOTE: AREA REDUCED BY 36.8% DUE TO 12-2 CEILING

REMOTE AREA 2

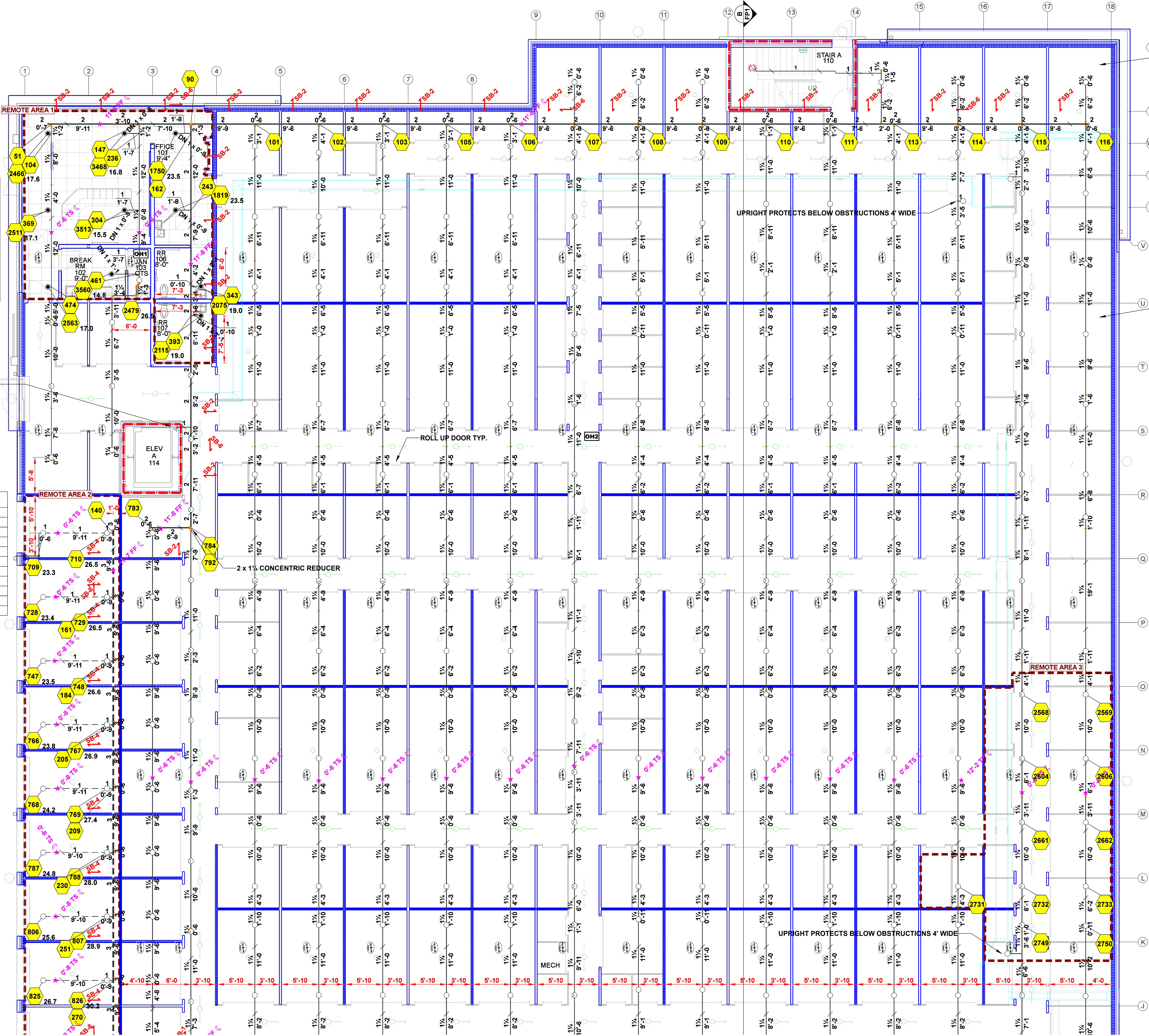
OCCUPANCY CLASSIFICATION	Ordinary Group II
DENSITY (gpm/ft ²)	0.20 for 1950ft ² (Actual 1923ft ²)
TOTAL HOSE STREAMS	250.0
DRY CAPACITY	162gal
TOTAL HEADS FLOWING	24
K-FACTOR	8
TOTAL WATER REQUIRED	969.9
TOTAL PRESSURE REQUIRED	66.5
BASE OF RISER (gpm)	658.9
BASE OF RISER (psi)	60.8
SAFETY MARGIN (psi)	+11.5 (14.7%)

NOTE: ENTIRE AREA CALCULATED

Hydraulic Information

OCCUPANCY CLASSIFICATION	Ordinary Group II
DENSITY (gpm/ft ²)	0.20 for 1500ft ² (Actual 967ft ²)
QUICK RESPONSE REDUCTION	12'-2 Ceiling (36.8%) 949ft ²
TOTAL HOSE STREAMS	250.0
DRY CAPACITY	10gal
TOTAL HEADS FLOWING	11
K-FACTOR	8
TOTAL WATER REQUIRED	562.6
TOTAL PRESSURE REQUIRED	66.6
BASE OF RISER (gpm)	312.6
BASE OF RISER (psi)	61.6
SAFETY MARGIN (psi)	+14.3 (17.7%)

NOTE: AREA REDUCED BY 36.8% DUE TO 12-2 CEILING



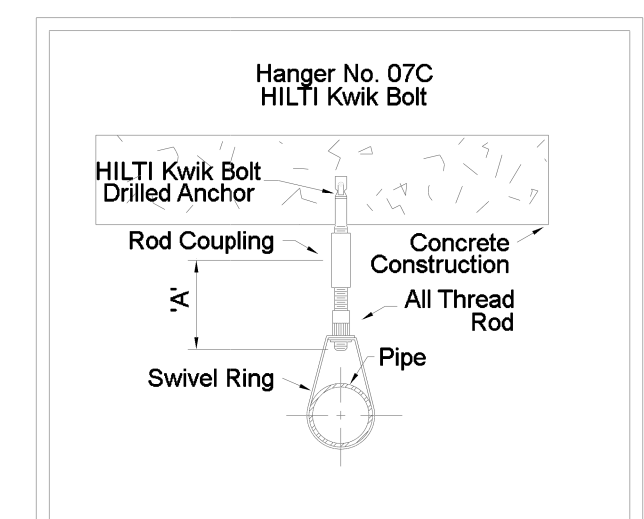
SIDEWALL SPRINKLERS
 SHALL BE NO MORE THAN
 2'-0" FROM THE BOTTOM
 OF HYDRAULIC ELEVATOR
 HOISTWAY PIT PER 9.3.6.1*

UPRIGHT PROTECTS BELOW OBSTRUCTIONS 4' WIDE

UPRIGHT PROTECTS BELOW OBSTRUCTIONS 4' WIDE

Sprinkler Legend

Symbol	Manufacturer	SIN	Model	Quantity	K-Factor	Type	Size	Response	Finish	Temperature	Note
⊙	Reliable	RA1414	F1FR56	12	5.6	Pendent	1/2"	Quick	Chrome	200°F	RECESSED
⊙	Reliable	RA1335	F1-66 HSW	2	5.6	Horizontal Sidewall	1/2"	Standard	Brass	200°F	N/A
⊙	Reliable	RA6322	F1FR60	907	8	Upright	1/2"	Quick	Brass	200°F	N/A
⊙	Reliable	RA1425	F1FR56	21	5.6	Upright	1/2"	Quick	Chrome	200°F	N/A
⊙	Reliable	RA6322	F1FR60	397	8	Upright	1/2"	Quick	Chrome	200°F	N/A
				Total = 1339							



MAXIMUM DISTANCE BETWEEN HANGERS (FT.-IN.)

	3/4"	1"	1 1/4"	1 1/2"	2"	2 1/2"	3"	4"	6"	8"
STEEL PIPE EXCEPT THREADED LIGHTWALL	NA	12-0	12-0	15-0	15-0	15-0	15-0	15-0	15-0	15-0
THREADED LIGHTWALL STEEL PIPE	NA	12-0	12-0	12-0	NA	NA	NA	NA	NA	NA
COPPER TUBE	8-0	8-0	10-0	10-0	12-0	12-0	12-0	NA	NA	NA
BLAZEMASTER CPVC	5-6	6-0	6-6	7-0	8-0	9-0	10-0	NA	NA	NA

LEVEL 1 FIRE SPRINKLER:

SCALE: 1/8" = 1'-0"
 N.A.S. = NO AUTOMATIC SPRINKLERS

KEY PLAN



PROJECT NORTH

HYDRAULIC SUPPLY INFORMATION

SYSTEM NOT INSTALLED	SYSTEM INSTALLED	STATIC (PSI)	RESIDUAL (PSI)	GPM FLOWING
<input type="checkbox"/>	<input checked="" type="checkbox"/>	83	64	1875

TEST DATE: 11/09/2023
 TEST LOCATION: 12' MAIN ON SW CORNER OF PARCEL
 BY: TRUCKEE/ADAMS WATER AUTHORITY

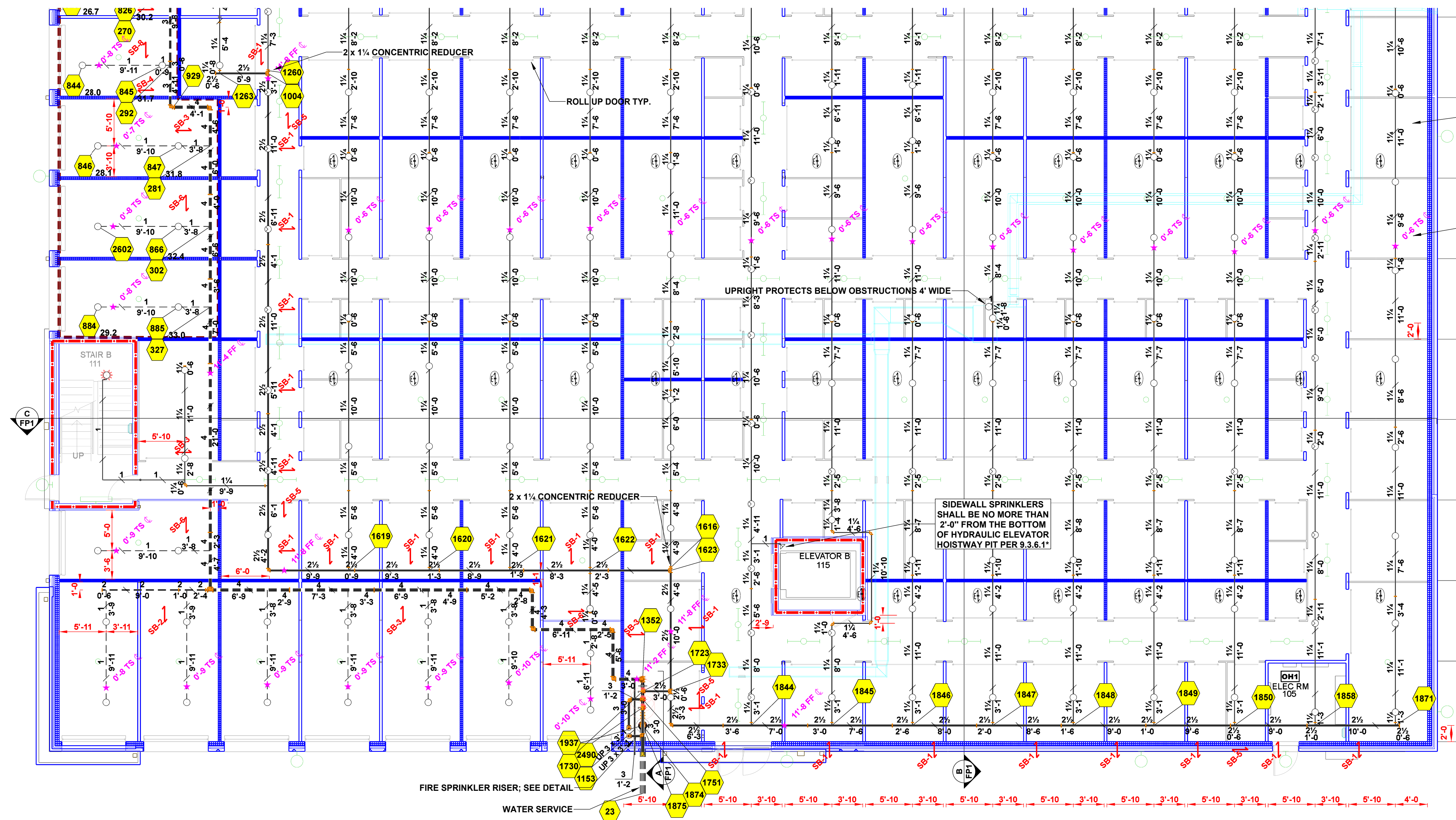
ISSUE / REVISION

DATE	FOR APPROVAL	DESCRIPTION
12/07/2023	A	

NOTICE
 MAINTAIN FIRE SPRINKLER
 SYSTEMS CONTAINING
 WATER ABOVE 40 DEG. F
 RESPONSIBILITY TO
 THE OWNERS
 IS THE OBLIGATION
 OF THE WET PIPE SPRINKLER
 SYSTEM AND IN ROOMS
 SUPPLY TO THE AUTOMATIC
 SPRINKLER SYSTEM.

FOR NAME:
9300 DOUBLE DIAMOND
 FOR ADDRESS:
**9300 DOUBLE DIAMOND
 PARKWAY, RENO NV**

SHEET TITLE:
 FIRE PROTECTION
 PLAN



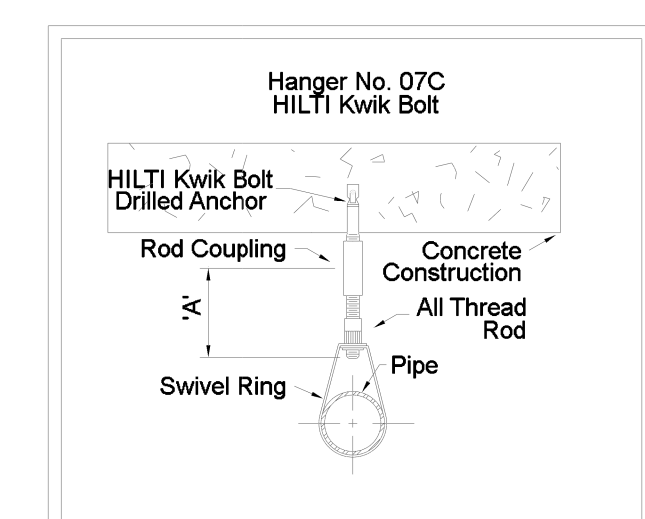
AIR VENT NOTE:
 AS STATED IN 16.7:
 AT THE DISCRETION OF THE
 INSTALLER, AUTOMATIC AIR VENTS
 ARE TO BE INSTALLED BY ONE OF
 THE FOLLOWING METHODS:
 (1) MANUAL VALVE, MIN 1/2"
 (2) AUTOMATIC AIR VENT
 (3) REMOTE INSPECTOR TEST VALVE
 (4) OTHER APPROVED MEANS

UNOBSTRUCTED CONCRETE SLAB
 CONSTRUCTION: INSTALL
 DEFLECTOR 1" MAX BELOW DECK
 MAX SPRINKLER SPACING 130 S.F.

ALL STORAGE UNITS AND THEIR
 CORRIDORS ARE CONSIDERED
 ORDINARY HAZARD GROUP II

SIDEWALL SPRINKLERS
 SHALL BE NO MORE THAN
 2'-0" FROM THE BOTTOM
 OF HYDRAULIC ELEVATOR
 HOISTWAY PIT PER 9.3.6.1

FIRE SPRINKLER RISER: SEE DETAIL
 WATER SERVICE



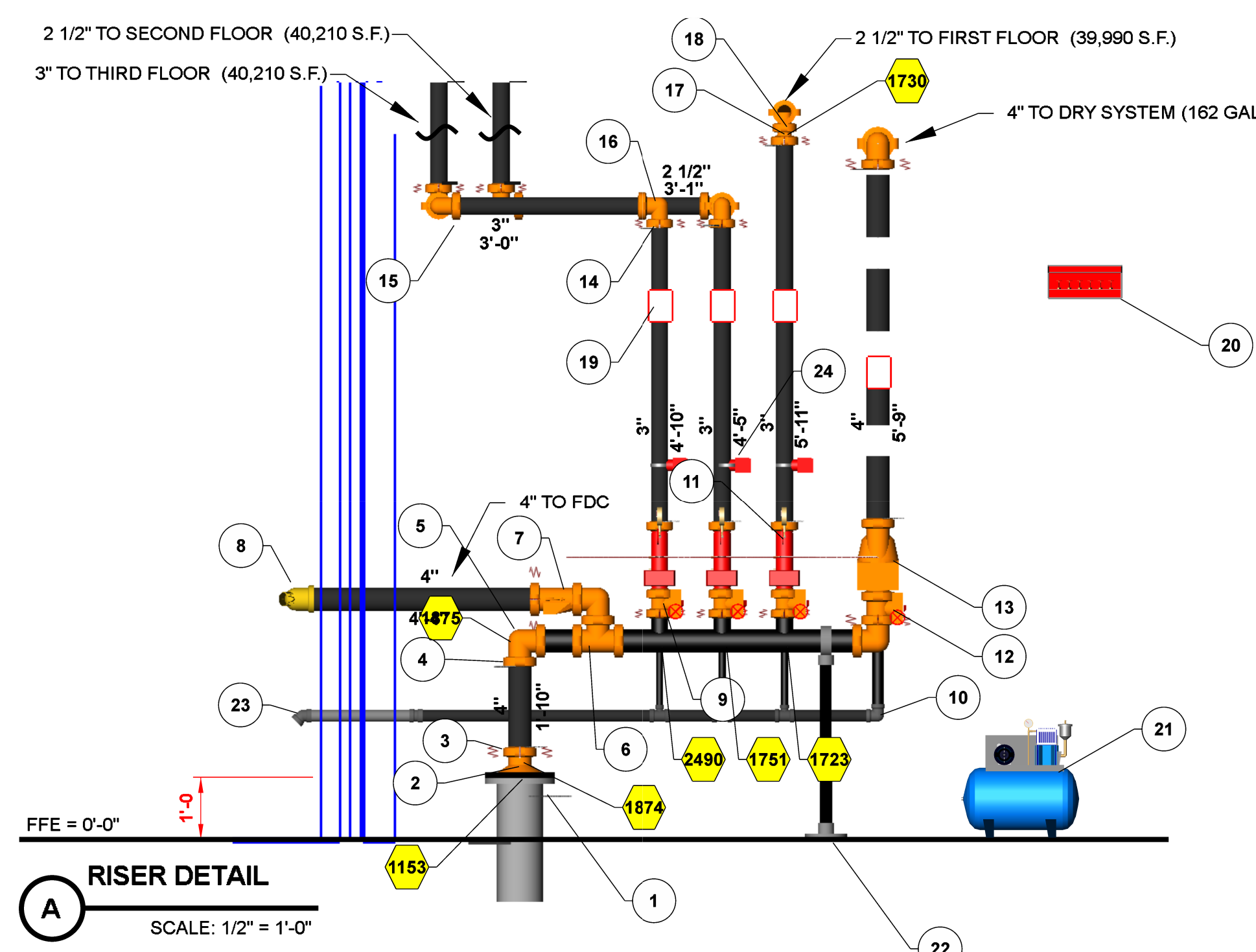
HANGER DETAILS

MAXIMUM DISTANCE BETWEEN HANGERS (FT.-IN.)

	3/4"	1"	1 1/4"	1 1/2"	2"	2 1/2"	3"	4"	6"	8"
STEEL PIPE EXCEPT THREADED LIGHTWALL	NA	12-0	12-0	15-0	15-0	15-0	15-0	15-0	15-0	15-0
THREADED LIGHTWALL STEEL PIPE	NA	12-0	12-0	12-0	12-0	NA	NA	NA	NA	NA
COPPER TUBE	8-0	8-0	10-0	10-0	12-0	12-0	NA	NA	NA	NA
BLAZEMASTER CPVC	5-6	6-0	6-6	7-0	8-0	9-0	10-0	NA	NA	NA

Sprinkler Legend

Symbol	Manufacturer	SIN	Model	Quantity	K-Factor	Type	Size	Response	Finish	Temperature	Note	
●	Reliable	RA1414	F1FR56	12	5.6	Pendent	1/2"	Quick	Chrome	200°F	RECESSED	
○	Reliable	RA1335	F1-86 ISW	2	5.6	Horizontal Sidewall	1/2"	Standard	Brass	200°F	N/A	
○	Reliable	RA6322	F1FR80	907	8	Upright	1/2"	Quick	Brass	200°F	N/A	
○	Reliable	RA1425	F1FR56	21	5.6	Upright	1/2"	Quick	Chrome	200°F	N/A	
○	Reliable	RA6322	F1FR80	397	8	Upright	1/2"	Quick	Chrome	200°F	N/A	
				Total = 1339								



Parts Legend

Key Note	Size	Description	Quantity
1	8	F-Grooved, Low Pressure Flange, DI	1
2	8 x 4	Grooved Concentric Reducer, DI, Org	1
3	4	Flexible Coupling, Org, E Gasket	5
4	4	Rigid Coupling, Org, E Gasket	10
5	4	Grooved, Short Radius, 90° Elbow, DI, Org	4
6	4	Grooved Short Radius Tee	1
7	4	Swing Check Valve, G-G	1
8	4 x 2 1/2 x 2 1/2	FDC	1
9	3	Butterfly Valve With Tamper, G-G	3
10	1 1/4	1000 Test-n-Drain	3
11	1/2	Pressure Relief Valve	3
12	4	Butterfly Valve With Tamper, G-G	1
13	4	EX, Dry Pipe Valve, G-G, Low Pressure	1
14	3	Flexible Coupling, Org, E Gasket	8
15	3	Rigid Coupling, Org, E Gasket	13
16	3	Grooved, Short Radius, 90° Elbow, DI, Org	6
17	3 x 2 1/2	Grooved Concentric Reducer, DI, Org	1
18	2 1/2	Rigid Coupling, Org, E Gasket	2
19	N/A	Hydraulic Placard	4
20	N/A	Spare Head Cabinet Per NFPA 13	1
21	N/A	Air Compressor	1
22	N/A	Pipe Stand	1
23	2	Main Drain	1
24	3 x 2	Waterflow Detector	3

HYDRAULIC SUPPLY INFORMATION

SYSTEM NOT DESIGNATED	SYSTEM NOT DESIGNATED
SYSTEM DESIGNATED	SYSTEM DESIGNATED
STATIC (PSI)	RESIDUAL (PSI)
TEST DATE: 11/09/2023	GPM FLOWING: 64
TEST LOCATION: 12' MAIN ON SW CORNER OF PARCEL	
BY: TRUCKEELADDAWATER AUTHORITY	

ISSUE / REVISION

DATE	DESCRIPTION
12/04/2023	FOR APPROVAL

NOTICE

MAINTAIN FIRE SPRINKLER SYSTEMS CONTAINING WATER ABOVE 40 DEG. F AT ALL TIMES. IT IS THE OWNER'S RESPONSIBILITY TO MAINTAIN AND INSURE THE WET PIPE SPRINKLER SYSTEM AND IN ROOMS SUPPLY TO THE AUTOMATIC SPRINKLER SYSTEM.

PROJECT NAME:
9300 DOUBLE DIAMOND PARKWAY, RENO NV

SHEET TITLE:
FIRE PROTECTION PLAN

KEY PLAN

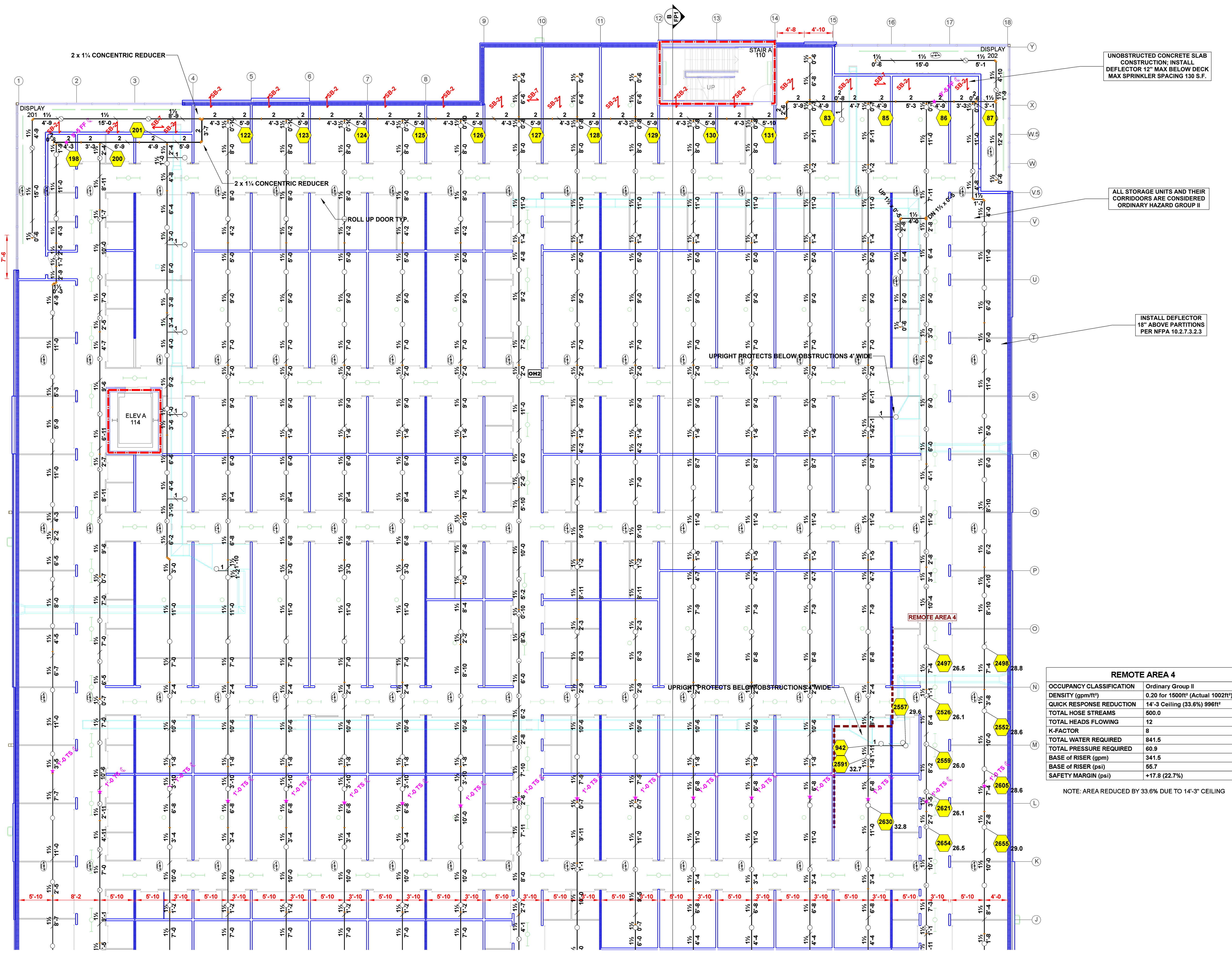
PROJECT NORTH

COUNT: SHEET NO.

LEVEL 1 FIRE SPRINKLER:

SCALE: 1/8" = 1'-0"
 N.A.S. = NO AUTOMATIC SPRINKLERS

AIR VENT NOTE:
 AS STATED IN 16.7:
 AT THE DISCRETION OF THE
 INSTALLER, AUTOMATIC AIR VENTS
 ARE TO BE INSTALLED BY ONE OF
 THE FOLLOWING METHODS
 (1) MANUAL VALVE, MIN 12"
 (2) AUTOMATIC AIR VENT
 (3) REMOTE INSPECTOR TEST VALVE
 (4) OTHER APPROVED MEANS



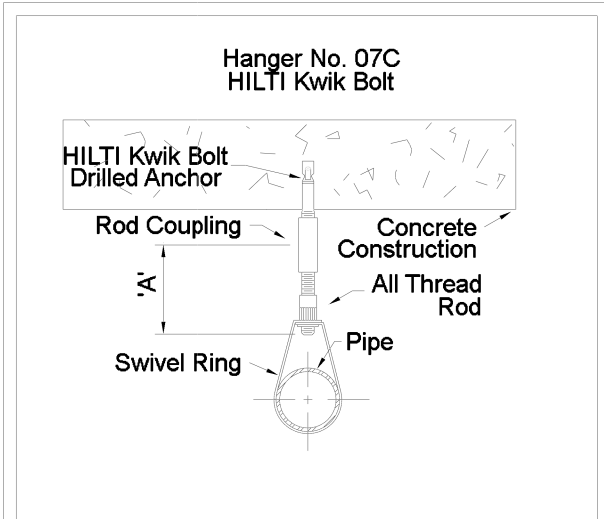
REMOTE AREA 4

OCCUPANCY CLASSIFICATION	Ordinary Group II
DENSITY (gpm/ft ²)	0.20 for 1500ft ² (Actual 1002ft ²)
QUICK RESPONSE REDUCTION	14'-3" Ceiling (33.6%) 996ft ²
TOTAL HOSE STREAMS	500.0
TOTAL HEADS FLOWING	12
K-FACTOR	8
TOTAL WATER REQUIRED	841.5
TOTAL PRESSURE REQUIRED	60.9
BASE OF RISER (gpm)	341.5
BASE OF RISER (psi)	55.7
SAFETY MARGIN (psi)	+17.8 (22.7%)

NOTE: AREA REDUCED BY 33.6% DUE TO 14'-3" CEILING

Sprinkler Legend

Symbol	Manufacturer	SIN	Model	Quantity	K-Factor	Type	Size	Response	Finish	Temperature	Note
●	Reliable	RA1414	F1FR56	12	5.6	Pendent	1/2"	Quick	Chrome	200°F	RECESSED
○	Reliable	RA1335	F1-56 HSW	2	5.6	Horizontal Sidewall	1/2"	Standard	Brass	200°F	N/A
○	Reliable	RA6322	F1FR80	907	8	Upright	1/2"	Quick	Brass	200°F	N/A
○	Reliable	RA1425	F1FR56	21	5.6	Upright	1/2"	Quick	Chrome	200°F	N/A
○	Reliable	RA6322	F1FR80	397	8	Upright	1/2"	Quick	Chrome	200°F	N/A
				Total = 1339							



HANGER DETAILS

MAXIMUM DISTANCE BETWEEN HANGERS (FT.-IN.)

	3/4"	1"	1 1/4"	1 1/2"	2"	2 1/2"	3"	4"	6"	8"
STEEL PIPE EXCEPT THREADED LIGHTWALL	NA	12-0	12-0	15-0	15-0	15-0	15-0	15-0	15-0	15-0
THREADED LIGHTWALL STEEL PIPE	NA	12-0	12-0	12-0	12-0	NA	NA	NA	NA	NA
COPPER TUBE	8-0	8-0	10-0	10-0	12-0	12-0	NA	NA	NA	NA
BLAZEMASTER CPVC	5-6	6-0	6-6	7-0	8-0	9-0	10-0	NA	NA	NA

LEVEL 2 FIRE SPRINKLER:

SCALE: 1/8" = 1'-0"
 N.A.S. = NO AUTOMATIC SPRINKLERS

KEY PLAN

PROJECT NORTH

HYDRAULIC SUPPLY INFORMATION

SYSTEM NOT HYDRAULICALLY DESIGNED	<input type="checkbox"/>
SYSTEM HYDRAULICALLY DESIGNED	<input checked="" type="checkbox"/>
STATIC (PSI)	83
RESIDUAL (PSI)	64
TEST DATE:	11/09/2023
TEST LOCATION:	12' MAIN ON SW CORNER OF PARCEL
BY:	TRUCKEEL/ADAMS WATER AUTHORITY

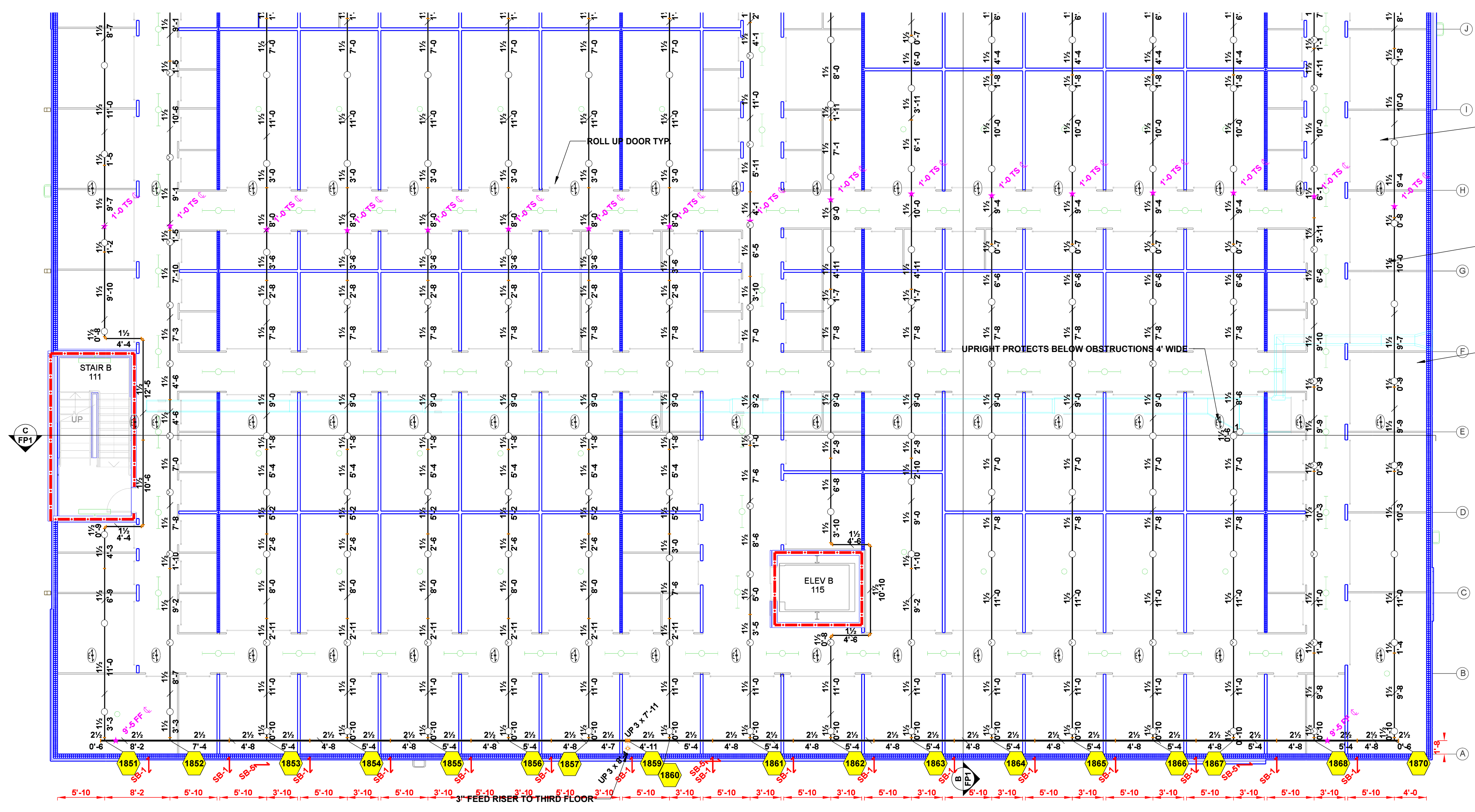
ISSUE / REVISION

DATE	DESCRIPTION
12/07/2023 <td>A</td>	A

NOTICE
 MAINTAIN FIRE SPRINKLER SYSTEMS CONTAINING WATER ABOVE 40 DEG. F IT IS THE OWNERS RESPONSIBILITY TO MAINTAIN AND INSPECTION OF THE WET PIPE SPRINKLER SYSTEM AND IN ROOMS SUPPLY TO THE AUTOMATIC SPRINKLER SYSTEM.

FOR NAME: 9300 DOUBLE DIAMOND
 FOR ADDRESS: 9300 DOUBLE DIAMOND PARKWAY, RENO NV

SHEET TITLE:
 FIRE PROTECTION PLAN



AIR VENT NOTE:
 AS STATED IN 16.7:
 AT THE DISCRETION OF THE
 INSTALLER, AUTOMATIC AIR VENTS
 ARE TO BE INSTALLED BY ONE OF
 THE FOLLOWING METHODS
 (1) MANUAL VALVE, MIN 1/2"
 (2) AUTOMATIC AIR VENT
 (3) REMOTE INSPECTOR TEST VALVE
 (4) OTHER APPROVED MEANS

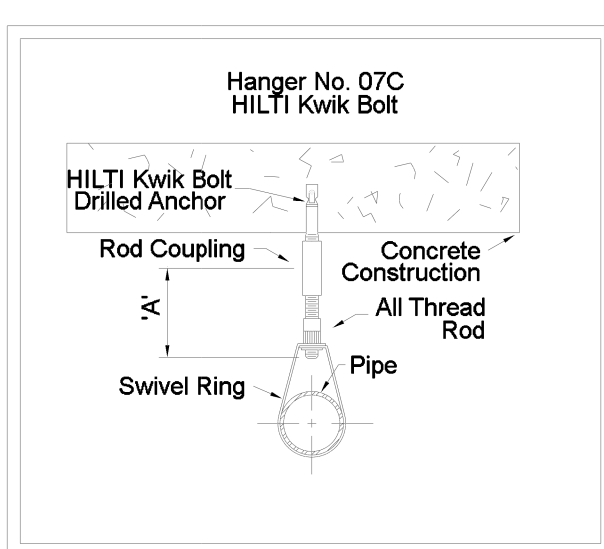
UNOBSTRUCTED CONCRETE SLAB
 CONSTRUCTION; INSTALL
 DEFLECTOR 12" MAX BELOW DECK
 MAX SPRINKLER SPACING 130 S.F.

ALL STORAGE UNITS AND THEIR
 CORRIDORS ARE CONSIDERED
 ORDINARY HAZARD GROUP II

INSTALL DEFLECTOR
 18" ABOVE PARTITIONS
 PER NFPA 10.2.7.3.2.3

UPRIGHT PROTECTS BELOW OBSTRUCTIONS 4' WIDE

Symbol	Manufacturer	SIN	Model	Quantity	K-Factor	Type	Size	Response	Finish	Temperature	Note
●	Reliable	RA1414	F1FR56	12	5.6	Pendant	1/2"	Quick	Chrome	200°F	RECESSED
○	Reliable	RA1335	F1-56 HSW	2	5.6	Horizontal Sidewall	1/2"	Standard	Brass	200°F	N/A
○	Reliable	RA6322	F1FR80	907	8	Upright	1/2"	Quick	Brass	200°F	N/A
○	Reliable	RA1425	F1FR56	21	5.6	Upright	1/2"	Quick	Chrome	200°F	N/A
○	Reliable	RA6322	F1FR80	397	8	Upright	1/2"	Quick	Chrome	200°F	N/A
				Total = 1339							



HANGER DETAILS

	MAXIMUM DISTANCE BETWEEN HANGERS (FT.-IN.)									
	3/4"	1"	1 1/4"	1 1/2"	2"	2 1/2"	3"	4"	6"	8"
STEEL PIPE EXCEPT THREADED LIGHTWALL	NA	12-0	12-0	15-0	15-0	15-0	15-0	15-0	15-0	15-0
THREADED LIGHTWALL STEEL PIPE	NA	12-0	12-0	12-0	12-0	NA	NA	NA	NA	NA
COPPER TUBE	8-0	8-0	10-0	10-0	12-0	12-0	NA	NA	NA	NA
BLAZEMASTER CPVC	5-6	6-0	6-6	7-0	8-0	9-0	10-0	NA	NA	NA

HYDRAULIC SUPPLY INFORMATION

SYSTEM SYSTEM NOT
 DESIGNED DESIGNED

STATIC (PSI) 83 RESIDUAL (PSI) 64
 TEST DATE: 11/09/2023 GPM FLOWING 1875
 TEST LOCATION: 12' MAIN ON SW CORNER OF PARCEL
 BY: TRUCKEE/MAADAWA WATER AUTHORITY

fire pump - see pump plan

ISSUE / REVISION

DATE	DESCRIPTION
12/07/2023 <td>FOR APPROVAL</td>	FOR APPROVAL

NOTICE

MAINTAIN FIRE SPRINKLER SYSTEMS CONTAINING WATER ABOVE 40 DEG. F AT ALL TIMES. IT IS THE OWNERS RESPONSIBILITY TO MAINTAIN AND INSURE THE WET PIPE SPRINKLER SYSTEM AND IN ROOMS SUPPLY TO THE AUTOMATIC SPRINKLER SYSTEM.

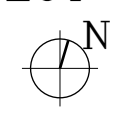
PROJECT NAME:
9300 DOUBLE DIAMOND

PROJECT ADDRESS:
9300 DOUBLE DIAMOND PARKWAY, RENO NV

KEY PLAN



PROJECT NORTH

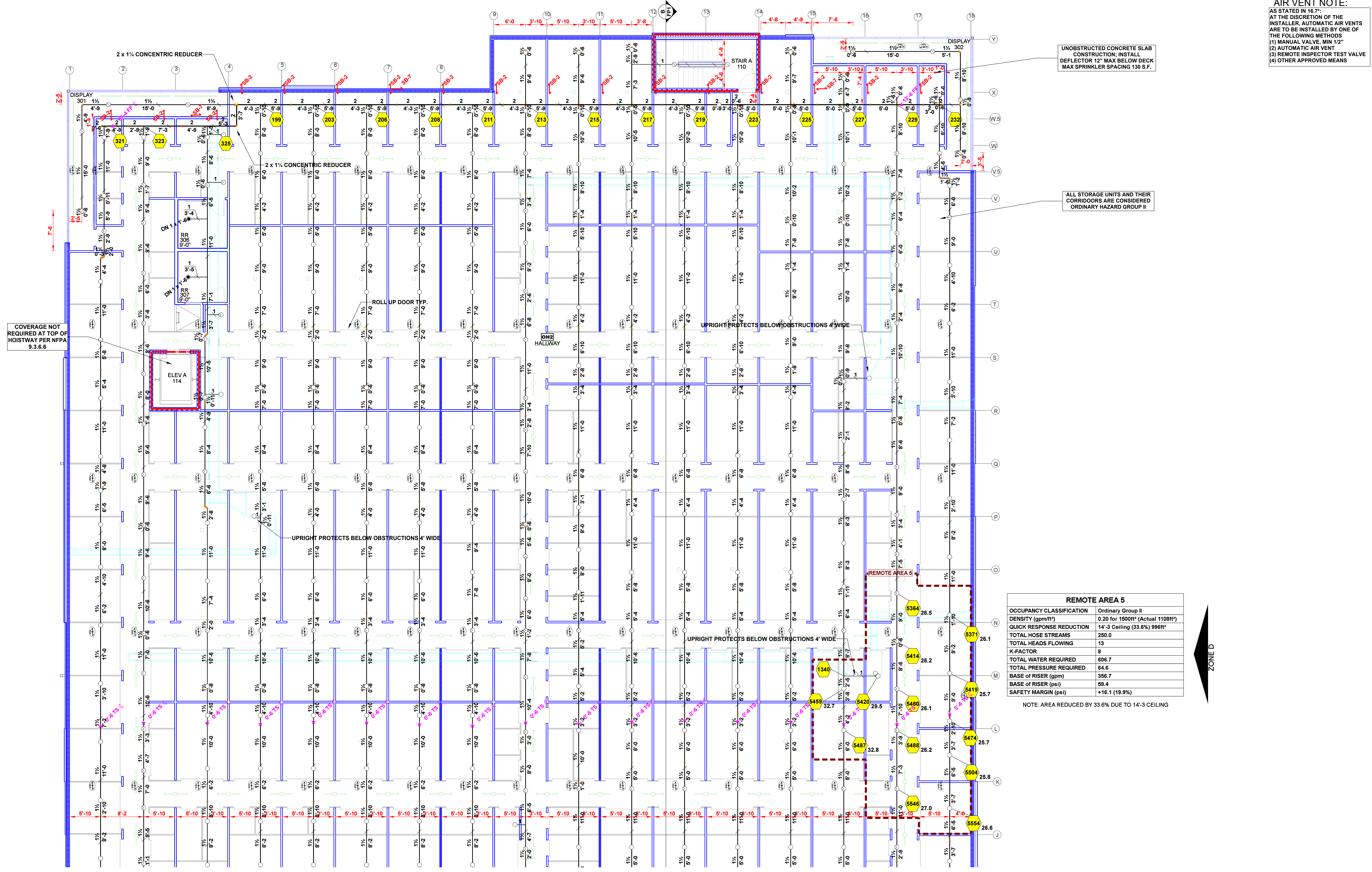


SHEET TITLE:
FIRE PROTECTION PLAN

COUNT: 5 of 7 SHEET NO. FP5

LEVEL 2 FIRE SPRINKLER:

SCALE: 1/8" = 1'-0"
 N.A.S. = NO AUTOMATIC SPRINKLERS



AIR VENT NOTE:
 AS STATED IN 16.7:
 AT THE DISCRETION OF THE
 INSTALLER, AUTOMATIC AIR VENTS
 ARE TO BE INSTALLED BY ONE OF
 THE FOLLOWING METHODS
 (1) MANUAL VALVE, MIN 12"
 (2) AUTOMATIC AIR VENT
 (3) REMOTE INSPECTOR TEST VALVE
 (4) OTHER APPROVED MEANS

UNOBSTRUCTED CONCRETE SLAB
 CONSTRUCTION. INSTALL
 DEFLECTOR 12" MAX BELOW DECK
 MAX SPRINKLER SPACING 130 S.F.

ALL STORAGE UNITS AND THEIR
 CORRIDORS ARE CONSIDERED
 ORDINARY HAZARD GROUP II

COVERAGE NOT
 REQUIRED AT TOP OF
 HOISTWAY PER NFPA
 9.3.6.6

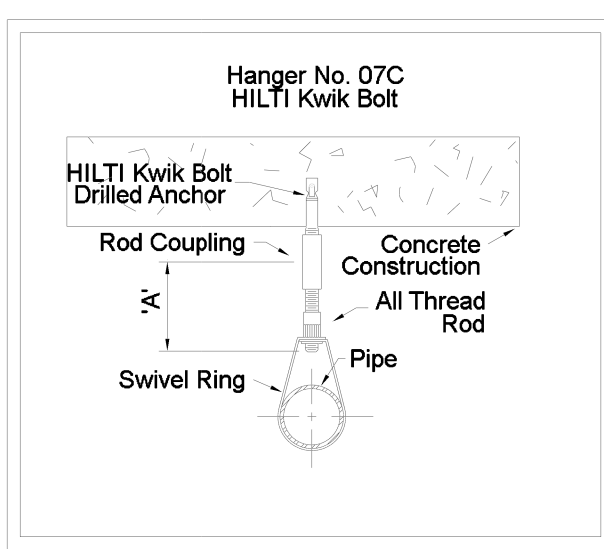
REMOTE AREA 5

OCCUPANCY CLASSIFICATION	Ordinary Group II
DENSITY (gpm/ft ²)	0.20 for 1500ft ² (Actual 1108ft ²)
QUICK RESPONSE REDUCTION	14-3 Ceiling (33.6%) 986ft ²
TOTAL HOSE STREAMS	280.0
TOTAL HEADS FLOWING	13
K-FACTOR	8
TOTAL WATER REQUIRED	606.7
TOTAL PRESSURE REQUIRED	64.6
BASE OF RISER (gpm)	366.7
BASE OF RISER (psi)	59.4
SAFETY MARGIN (psi)	+16.1 (19.8%)

NOTE: AREA REDUCED BY 33.6% DUE TO 14-3 CEILING

Sprinkler Legend

Symbol	Manufacturer	SIN	Model	Quantity	K-Factor	Type	Size	Response	Finish	Temperature	Note
●	Reliable	RA1414	F1FR56	12	5.6	Pendent	1/2	Quick	Chrome	200°F	RECESSED
○	Reliable	RA1335	F1-56 HSW	2	5.6	Horizontal Sidewall	1/2	Standard	Brass	200°F	N/A
○	Reliable	RA6322	F1FR80	907	8	Upright	1/2	Quick	Brass	200°F	N/A
○	Reliable	RA1425	F1FR56	21	5.6	Upright	1/2	Quick	Chrome	200°F	N/A
○	Reliable	RA6322	F1FR80	397	8	Upright	1/2	Quick	Chrome	200°F	N/A
				Total = 1339							

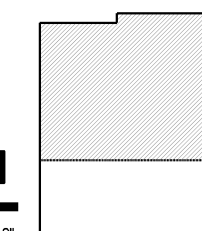


HANGER DETAILS

MAXIMUM DISTANCE BETWEEN HANGERS (FT.-IN.)

	3/4"	1"	1 1/4"	1 1/2"	2"	2 1/2"	3"	4"	6"	8"
STEEL PIPE EXCEPT THREADED LIGHTWALL	NA	12-0	12-0	15-0	15-0	15-0	15-0	15-0	15-0	15-0
THREADED LIGHTWALL STEEL PIPE	NA	12-0	12-0	12-0	12-0	12-0	12-0	NA	NA	NA
COPPER TUBE	8-0	8-0	10-0	10-0	12-0	12-0	12-0	NA	NA	NA
BLAZEMASTER CPVC	5-6	6-0	6-6	7-0	8-0	9-0	10-0	NA	NA	NA

KEY PLAN



LEVEL 3 FIRE SPRINKLER:

SCALE: 1/8" = 1'-0"
 N.A.S. = NO AUTOMATIC SPRINKLERS

HYDRAULIC SUPPLY INFORMATION

SYSTEM NOT INSTALLED	DESIGNED	DESIGNED	
SYSTEM INSTALLED	DESIGNED	DESIGNED	
STATIC (PSI)	83	RESIDUAL (PSI)	64
TEST DATE:	11/02/2023	TEST LOCATION:	12' MAIN ON SW CORNER OF PARCEL
BY: TRUCKEELMADDOX WATER AUTHORITY			

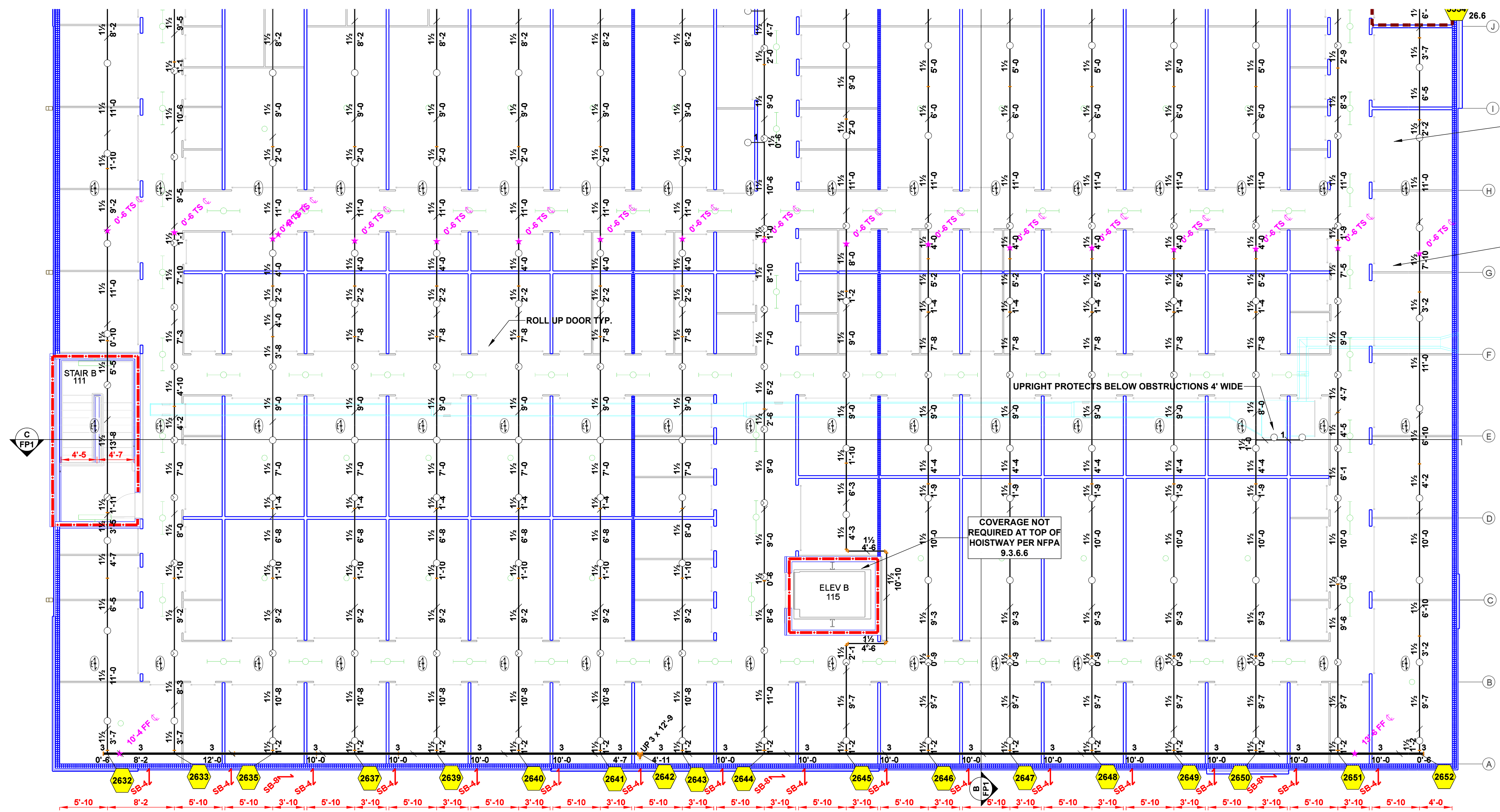
ISSUE / REVISION

DATE	DESCRIPTION
12/07/2023 <td>FOR APPROVAL</td>	FOR APPROVAL

NOTICE
 MAINTAIN FIRE SPRINKLER SYSTEMS CONTAINING WATER ABOVE 40 DEG. F IT IS THE OWNERS RESPONSIBILITY TO MAINTAIN AND INSURE THE WET PIPE SPRINKLER SYSTEM AND IN ROOMS SUPPLY TO THE AUTOMATIC SPRINKLER SYSTEM.

FOR NAME: 9300 DOUBLE DIAMOND
 FOR ADDRESS: 9300 DOUBLE DIAMOND PARKWAY, RENO NV

SHEET TITLE:
 FIRE PROTECTION PLAN



AIR VENT NOTE:
 AS STATED IN 16.77:
 AT THE DISCRETION OF THE
 INSTALLER AUTOMATIC AIR VENTS
 ARE TO BE INSTALLED BY ONE OF
 THE FOLLOWING METHODS
 (1) MANUAL VALVE, MIN 12"
 (2) AUTOMATIC AIR VENT
 (3) REMOTE INSPECTOR TEST VALVE
 (4) OTHER APPROVED MEANS

UNOBSTRUCTED CONCRETE SLAB
 CONSTRUCTION: INSTALL
 DEFLECTOR 12" MAX BELOW DECK
 MAX SPRINKLER SPACING 130 S.F.

ALL STORAGE UNITS AND THEIR
 CORRIDORS ARE CONSIDERED
 ORDINARY HAZARD GROUP II

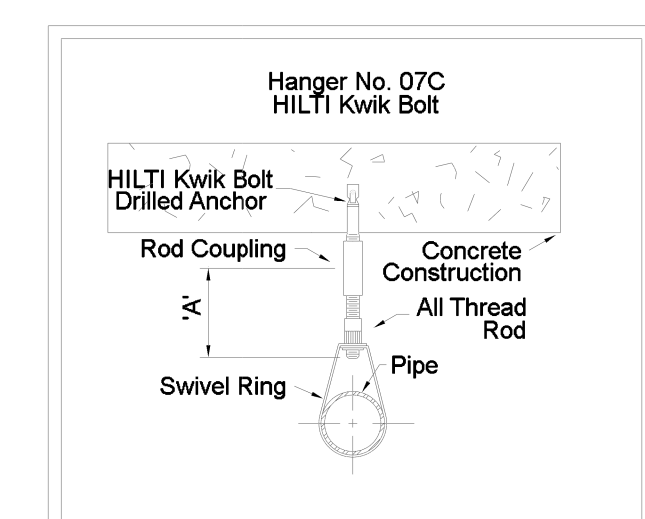
UPRIGHT PROTECTS BELOW OBSTRUCTIONS 4' WIDE

COVERAGE NOT
 REQUIRED AT TOP OF
 HOISTWAY PER NFPA
 9.3.6.6

STAIR B 111

ELEV B 115

Sprinkler Legend											
Symbol	Manufacturer	SIN	Model	Quantity	K-Factor	Type	Size	Response	Finish	Temperature	Note
●	Reliable	RA1414	F1FR56	12	5.6	Pendent	1/2"	Quick	Chrome	200°F	RECESSED
○	Reliable	RA1335	F1-56 HSW	2	5.6	Horizontal Sidewall	1/2"	Standard	Brass	200°F	N/A
○	Reliable	RA6322	F1FR80	907	8	Upright	1/2"	Quick	Brass	200°F	N/A
○	Reliable	RA1425	F1FR56	21	5.6	Upright	1/2"	Quick	Chrome	200°F	N/A
○	Reliable	RA6322	F1FR80	397	8	Upright	1/2"	Quick	Chrome	200°F	N/A
				Total = 1339							



HANGER DETAILS

	MAXIMUM DISTANCE BETWEEN HANGERS (FT.-IN.)									
	3/4"	1"	1 1/4"	1 1/2"	2"	2 1/2"	3"	4"	6"	8"
STEEL PIPE EXCEPT THREADED LIGHTWALL	NA	12-0	12-0	15-0	15-0	15-0	15-0	15-0	15-0	15-0
THREADED LIGHTWALL STEEL PIPE	NA	12-0	12-0	12-0	12-0	NA	NA	NA	NA	NA
COPPER TUBE	8-0	8-0	10-0	10-0	12-0	12-0	NA	NA	NA	NA
BLAZEMASTER CPVC	5-6	6-0	6-6	7-0	8-0	9-0	10-0	NA	NA	NA

HYDRAULIC SUPPLY INFORMATION

SYSTEM NOT INSTALLED
 SYSTEM FULLY DESIGNED

STATIC (PSI) _____ RESIDUAL (PSI) _____ GPM FLOWING _____

TEST DATE: 11/09/2023

TEST LOCATION: 12' MAIN ON SW CORNER OF PARCEL

BY: TRUCKEE/MAADAWA WATER AUTHORITY

fire pump - see pump plan

ISSUE / REVISION

DATE	DESCRIPTION
12/07/2023 <td>FOR APPROVAL</td>	FOR APPROVAL

NOTICE

MAINTAIN FIRE SPRINKLER SYSTEMS CONTAINING WATER ABOVE 40 DEG. F RESPONSIBILITY TO THE OWNERS. IT IS THE OWNERS RESPONSIBILITY TO MAINTAIN AND INSURE THE WET PIPE SPRINKLER SYSTEM AND IN ROOMS SUPPLY TO THE AUTOMATIC SPRINKLER SYSTEM.

PROJECT NAME:
 9300 DOUBLE DIAMOND

PROJECT ADDRESS:
 9300 DOUBLE DIAMOND PARKWAY, RENO NV

KEY PLAN



SHEET TITLE:
 FIRE PROTECTION PLAN

LEVEL 3 FIRE SPRINKLER:

SCALE: 1/8" = 1'-0"
 N.A.S. = NO AUTOMATIC SPRINKLERS

PROJECT NORTH



COUNT: SHEET NO.

7 of 7 FP7