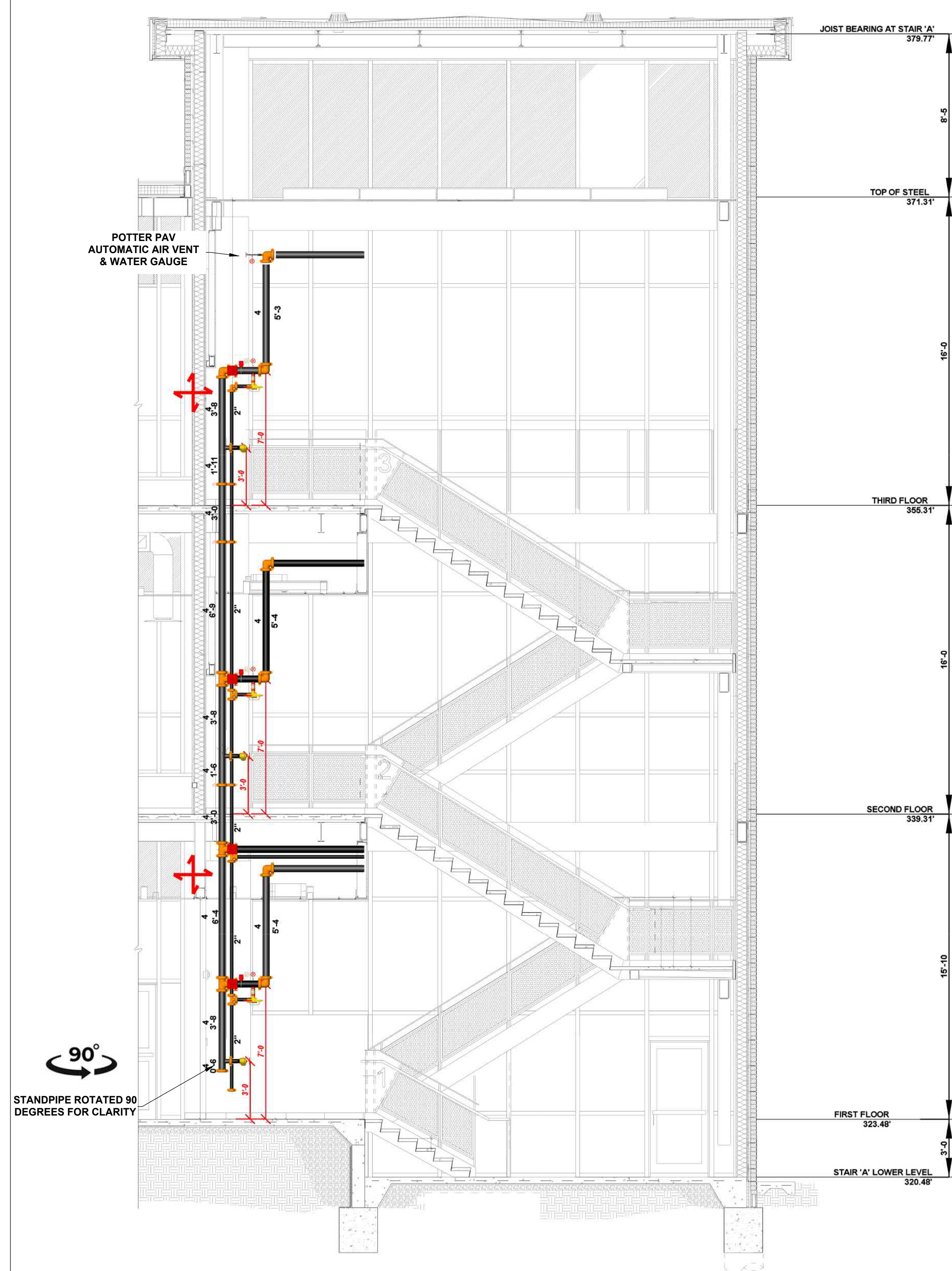
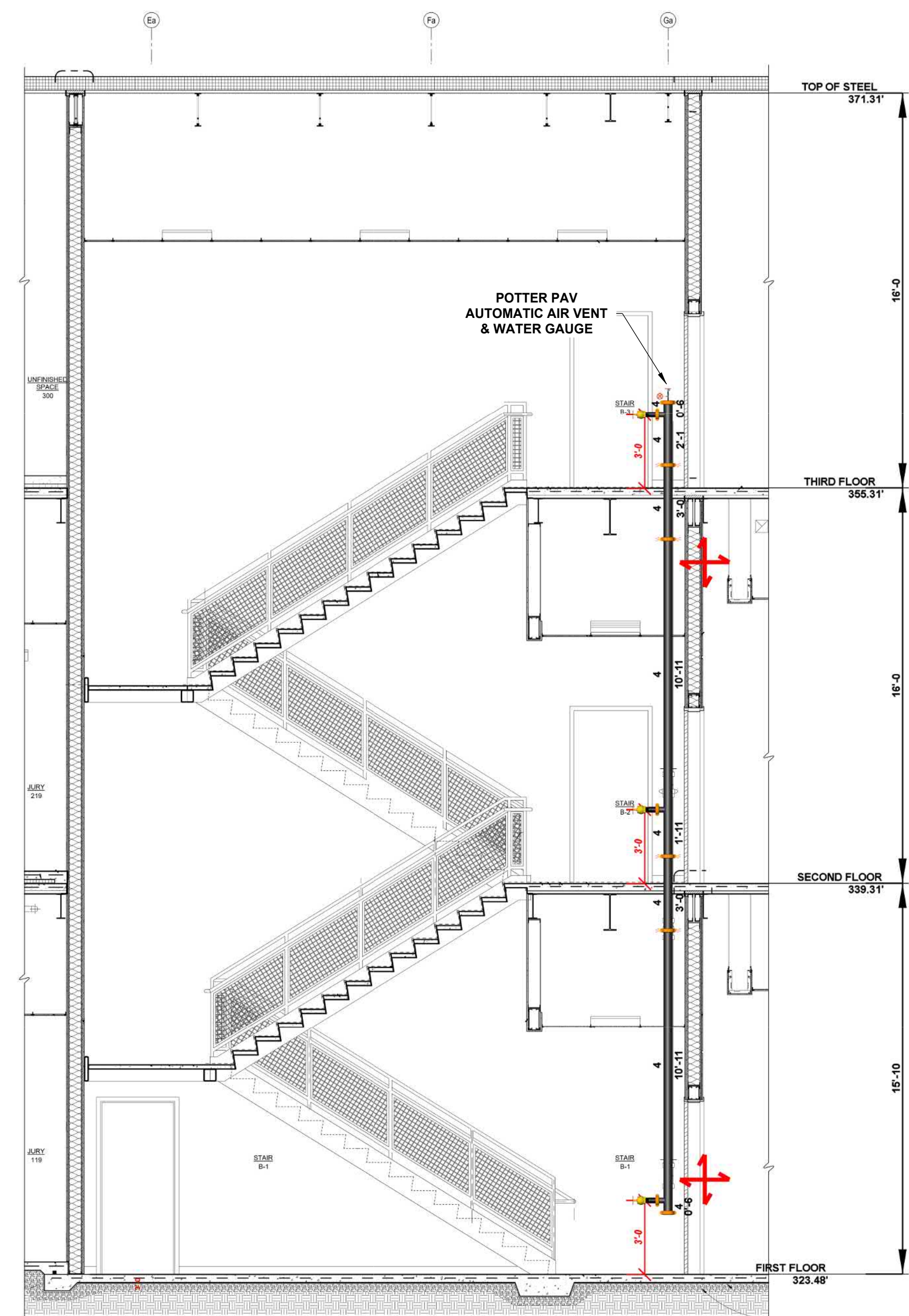


#	DESCRIPTION
1	4" GRV'D SCH. 10 PIPE
2	4" GRV'D TEE
3	4" BUTTERFLY VALVE
4	FLOW SWITCH
5	4" CHECK VALVE
6	DRAIN TO 2" PIPE
7	2"x 2"x 1" GRV'D REDUCING TEE
8	2" GRV'D SCH. 10 PIPE

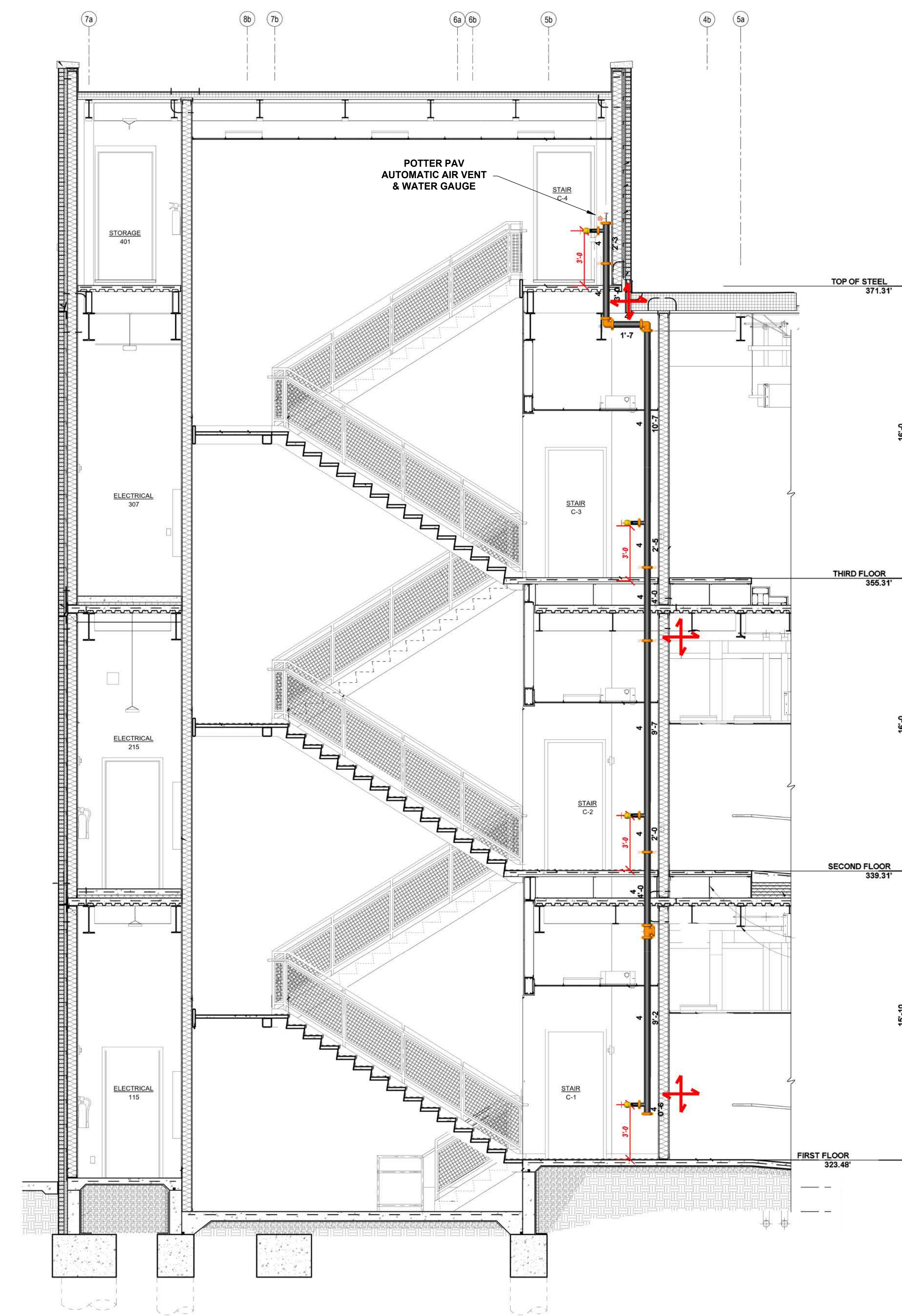
**1 VICTAULIC UMC CONTROL VALVE (TYP.)**  
SCALE: 1/2" = 1'-0"



**STANDPIPE STAIR SECTION A**  
SCALE: 1/4" = 1'-0"



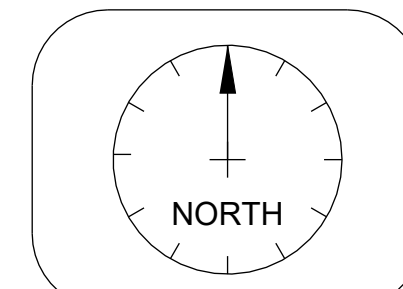
**STANDPIPE STAIR SECTION B**  
SCALE: 1/4" = 1'-0"



**STANDPIPE STAIR SECTION C**  
SCALE: 1/4" = 1'-0"

REVISIONS	
No.	Description

DRAWN BY	ZBS
SCALE	AS NOTED
DATE	02/12/24
JOB NUMBER	00270



CRAIGHEAD COUNTY COURTHOUSE  
511 SOUTH MAIN ST  
JONESBORO, AR 72401

DRAWING TITLE  
FIRE PROTECTION  
STANDPIPE PLAN  
LEVEL 1

SHEET  
2 of 4

AS STATED IN 8.16.6:  
 AT THE DISCRETION OF  
 THE INSTALLER, AUTOMATIC  
 AIR VENTS ARE TO BE  
 INSTALLED BY ONE OF THE  
 FOLLOWING METHODS  
 (1) MANUAL VALVE, MIN 1/2"  
 (2) AUTOMATIC AIR VENT  
 (3) OTHER APPROVED MEANS

1st Floor Sprinkler Legend											
Symbol	Manufacturer	SIN	Model	Quantity	K-Factor	Type	Size	Response	Finish	Temperature	Note
●	Tyco	TY5332	SW-20	1	11.2	Horizontal Sidewall	3/4"	Standard	Brass	155 °F	16"x16" MAX
●	Viking	VK4621		114	5.6	Concealed Pendent	3/4"	Quick	Brass	155 °F	15"x15" MAX
○	Viking	VK3001		36	5.6	Upright	3/4"	Quick	Chrome	155 °F	15"x15" MAX
●	Viking	VK636	EC-ELO	10	11.2	Pendent	3/4"	Quick	Brass	165 °F	20"x20" MAX
●	Viking	VK426		2	5.6	Pendent	3/4"	Quick	Chrome	165 °F	INSTITUTIONAL
●	Viking	VK305	Microfast	2	5.6	Horizontal Sidewall	3/4"	Quick	Brass	200 °F	10"x14" MAX
				<b>Total = 165</b>							



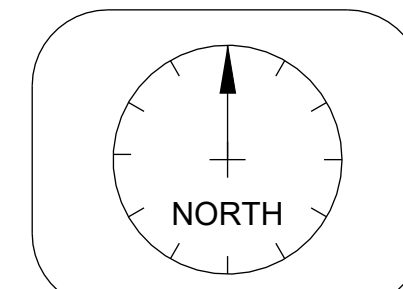
REVISIONS	
No.	Description

DRAWN BY  
**ZBS**

SCALE  
**1/8" = 1'-0"**

DATE  
**02/12/24**

JOB NUMBER  
**00270**

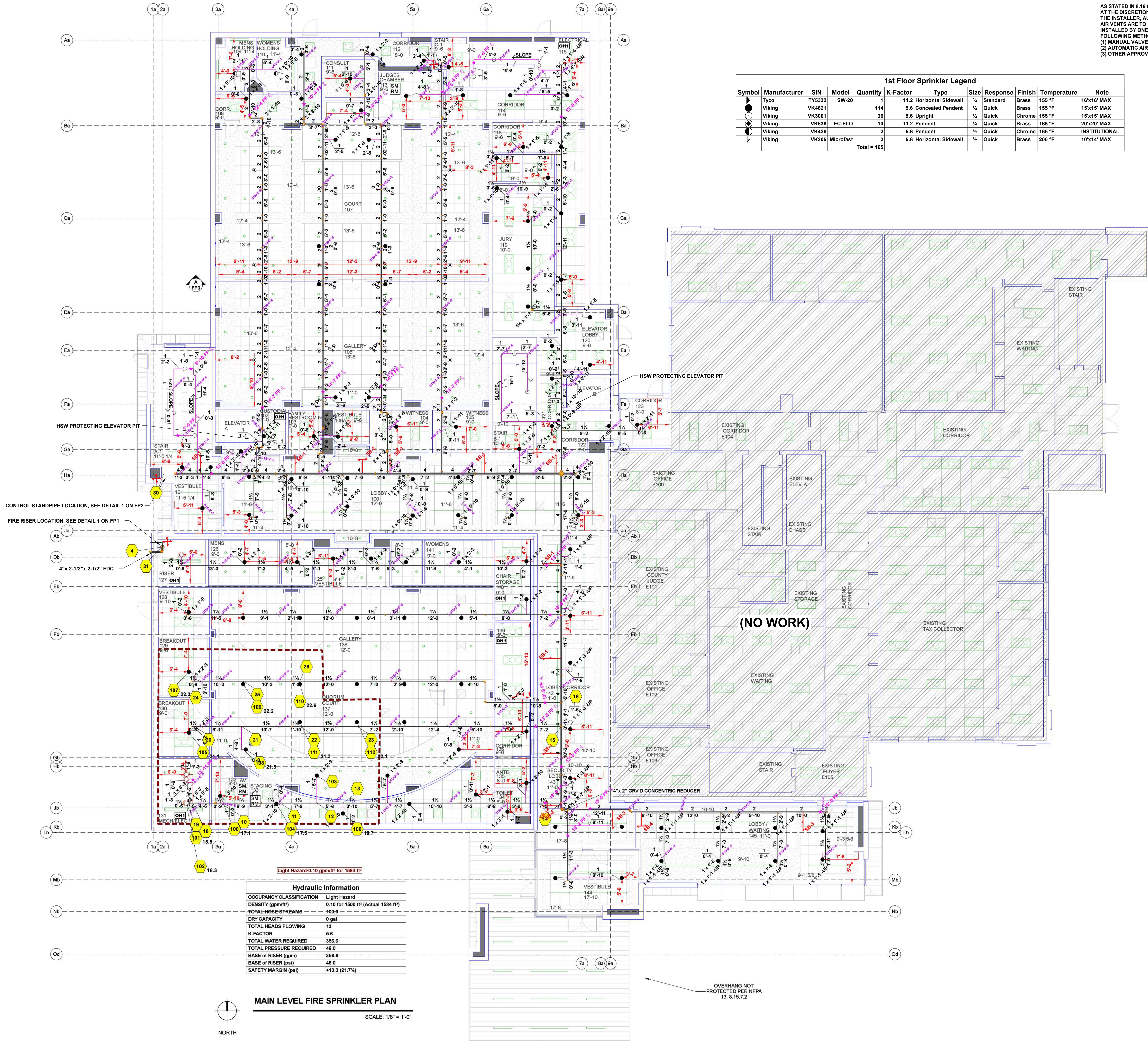


**CRAIGHEAD COUNTY COURTHOUSE**  
 511 SOUTH MAIN ST  
 JONESBORO, AR 72401

DRAWING TITLE  
**FIRE  
 SPRINKLER  
 PLAN**

LEVEL 1

SHEET  
**3 of 4**



Hydraulic Information		
OCCUPANCY CLASSIFICATION	Light Hazard	
DENSITY (gpm/ft)	0.10 for 1600 ft <sup>2</sup> (Actual 1584 ft <sup>2</sup> )	
TOTAL HOSE STREAMS	100.0	
DRY CAPACITY	0 gal	
TOTAL HEADS FLOWING	13	
K-FACTOR	5.6	
TOTAL WATER REQUIRED	356.6	
TOTAL PRESSURE REQUIRED	48.0	
BASE OF RISER (gpm)	356.6	
BASE OF RISER (psi)	48.0	
SAFETY MARGIN (psi)	+13.3 (21.7%)	

**MAIN LEVEL FIRE SPRINKLER PLAN**  
 SCALE: 1/8" = 1'-0"

OVERHANG NOT  
 PROTECTED PER NFPA  
 13, 8.15.7.2



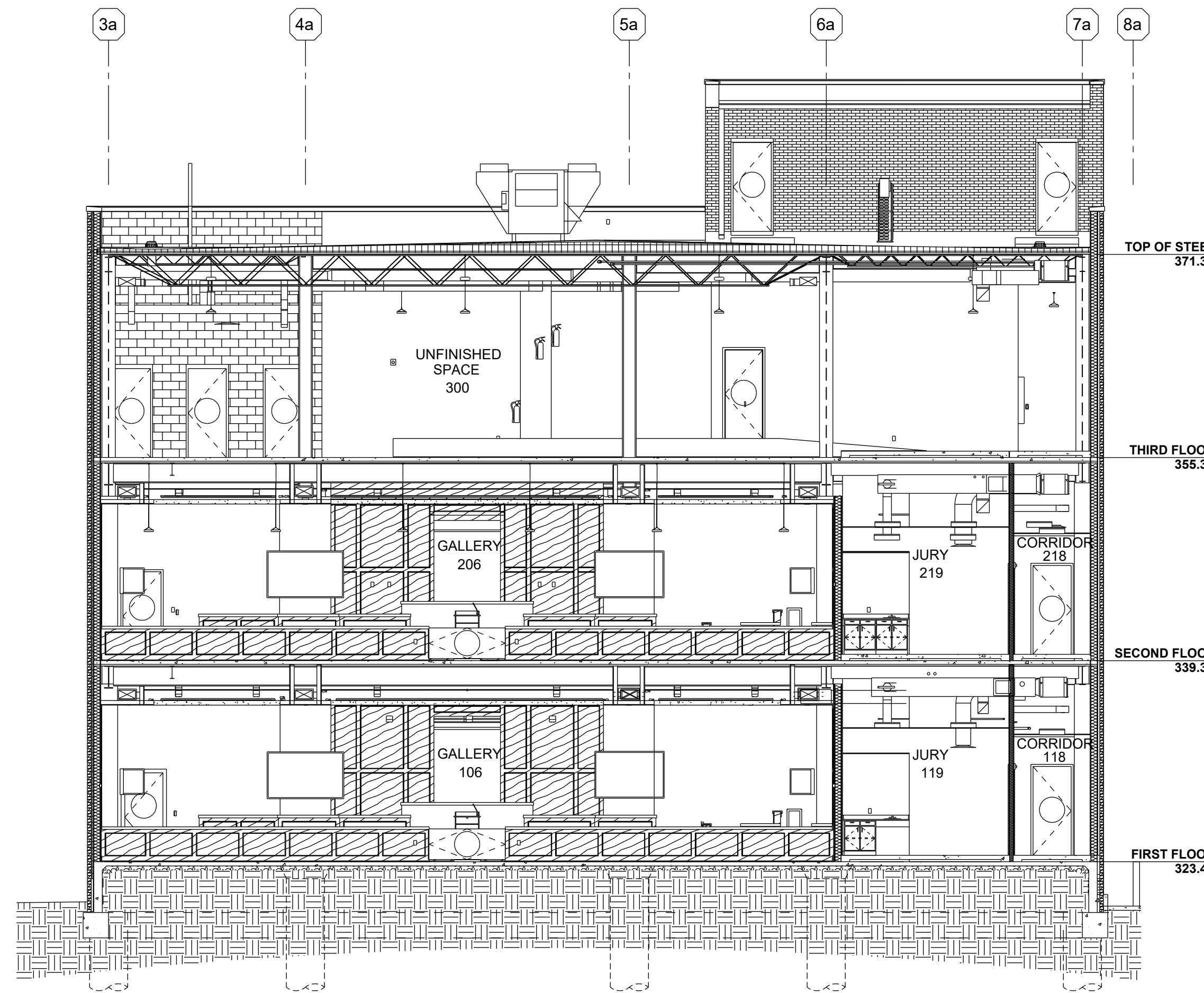
INSTITUTIONAL PENDANT SPRINKLER

2nd Floor Sprinkler Legend

Symbol	Manufacturer	SIN	Model	Quantity	K-Factor	Type	Size	Response	Finish	Temperature	Note
●	Viking	VK4621		53	5.6	Concealed Pendant	1/2"	Quick	Brass	155 °F	15'x15' MAX
○	Viking	VK636	EC-ELO	10	11.2	Pendant	3/4"	Quick	Brass	165 °F	20'x20' MAX
○	Viking	VK426		2	5.6	Pendant	1/2"	Quick	Chrome	165 °F	INSTITUTIONAL
○	Viking	VK3001		11	5.6	Upright	1/2"	Quick	Chrome	155 °F	15'x15' MAX
▶	Viking	VK305	Microfast	1	5.6	Horizontal Sidewall	1/2"	Quick	Brass	200 °F	10'x14' MAX
				Total = 77							

3rd Floor Sprinkler Legend

Symbol	Manufacturer	SIN	Model	Quantity	K-Factor	Type	Size	Response	Finish	Temperature	Note
●	Viking	VK4621		6	5.6	Concealed Pendant	1/2"	Quick	Brass	155 °F	15'x15' MAX
○	Viking	VK3001		58	5.6	Upright	1/2"	Quick	Chrome	155 °F	15'x15' MAX
▶	Viking	VK305	Microfast	1	5.6	Horizontal Sidewall	1/2"	Quick	Brass	200 °F	10'x14' MAX
				Total = 65							



BUILDING SECTION

SCALE: 1/8" = 1'-0"

AS STATED IN 8.16.6, AT THE DISCRETION OF THE INSTALLER, AUTOMATIC AIR VENTS ARE TO BE INSTALLED BY ONE OF THE FOLLOWING METHODS:  
 (1) MANUAL VALVE, MIN 1/2"  
 (2) AUTOMATIC AIR VENT  
 (3) OTHER APPROVED MEANS

3RD FLOOR PIPING SCHEME FOLLOWS THE PREVIOUS TWO FLOORS. PLUGS TEMPORARILY IN UNUSED OUTLETS.

(NO WORK)

(NO WORK)

2ND FLOOR FIRE SPRINKLER PLAN

SCALE: 1/8" = 1'-0"

3RD FLOOR FIRE SPRINKLER PLAN

SCALE: 1/8" = 1'-0"

Hydraulic Information

Remote Area 2	
OCCUPANCY CLASSIFICATION	Light Hazard
DENSITY (gpm/ft <sup>2</sup> )	0.10 for 1500 ft <sup>2</sup> (Actual 1019 ft <sup>2</sup> )
QUICK RESPONSE REDUCTION	13'-6" Ceiling (34.8%) 979 ft <sup>2</sup>
TOTAL HOSE STREAMS	100.0
TOTAL HEADS FLOWING	9
TOTAL WATER REQUIRED	269.3
TOTAL PRESSURE REQUIRED	49.2
SAFETY MARGIN (psi)	+12.3 (20.0%)

REMOTE AREA #2 WAS CALCULATED USING THE DENSITY/AREA METHOD. DESIGN AREA WAS SIZED IN ACCORDANCE WITH NFPA 13, 11.2.3.2 & QR REDUCTION APPLIED VIA SEC. 11.2.3.2.3.1

Hydraulic Information

Remote Area 3	
OCCUPANCY CLASSIFICATION	Light Hazard
DENSITY (gpm/ft <sup>2</sup> )	0.10 for 1500 ft <sup>2</sup> (Actual 1102 ft <sup>2</sup> )
QUICK RESPONSE REDUCTION	15'-0" Ceiling (31.0%) 1035 ft <sup>2</sup>
TOTAL HOSE STREAMS	100.0
TOTAL HEADS FLOWING	9
K-FACTOR	5.6
TOTAL WATER REQUIRED	267.7
TOTAL PRESSURE REQUIRED	49.1
BASE OF RISER (gpm)	267.7
BASE OF RISER (psi)	49.1
SAFETY MARGIN (psi)	+12.5 (20.3%)

REMOTE AREA #3 WAS CALCULATED USING THE DENSITY/AREA METHOD. DESIGN AREA WAS SIZED IN ACCORDANCE WITH NFPA 13, 11.2.3.2 & QR REDUCTION APPLIED VIA SEC. 11.2.3.2.3.1

DRAWN BY

ZBS

SCALE

1/8" = 1'-0"

DATE

02/12/24

JOB NUMBER

00270

NORTH

CRAIGHEAD COUNTY COURTHOUSE

511 SOUTH MAIN ST

JONESBORO, AR 72401

DRAWING TITLE

FIRE SPRINKLER PLAN

LEVEL 2 & 3

SHEET

4 of 4

No.	Date	Description