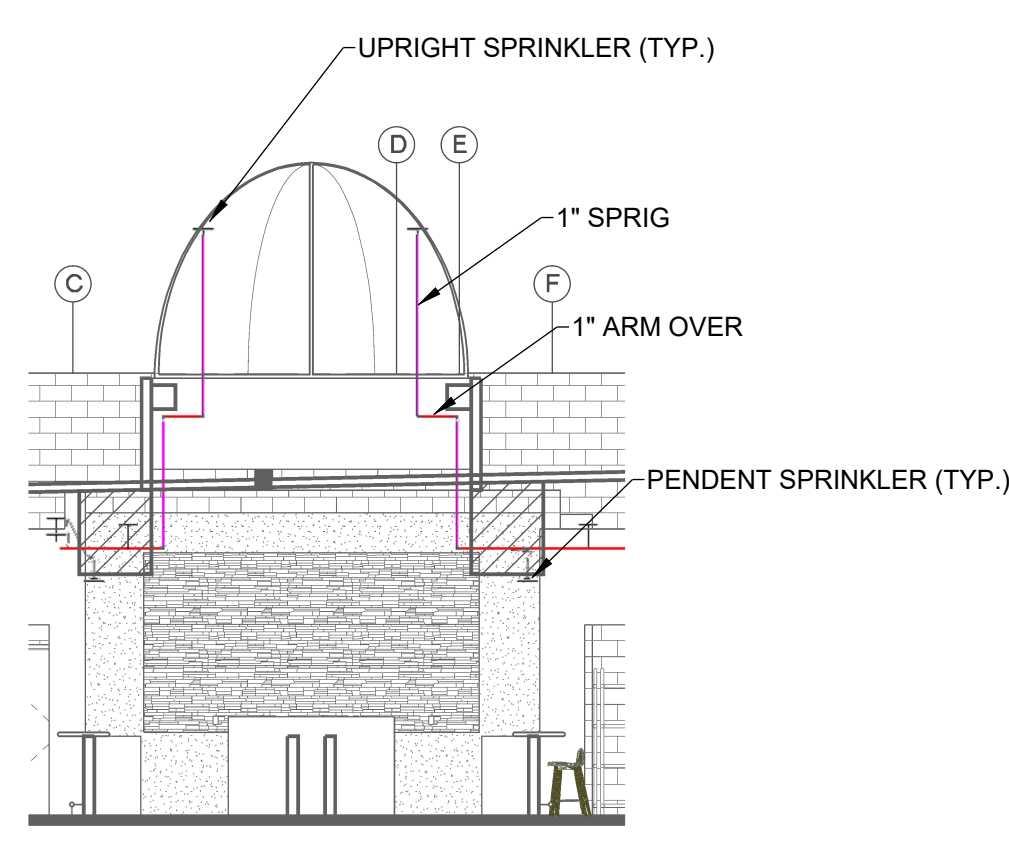
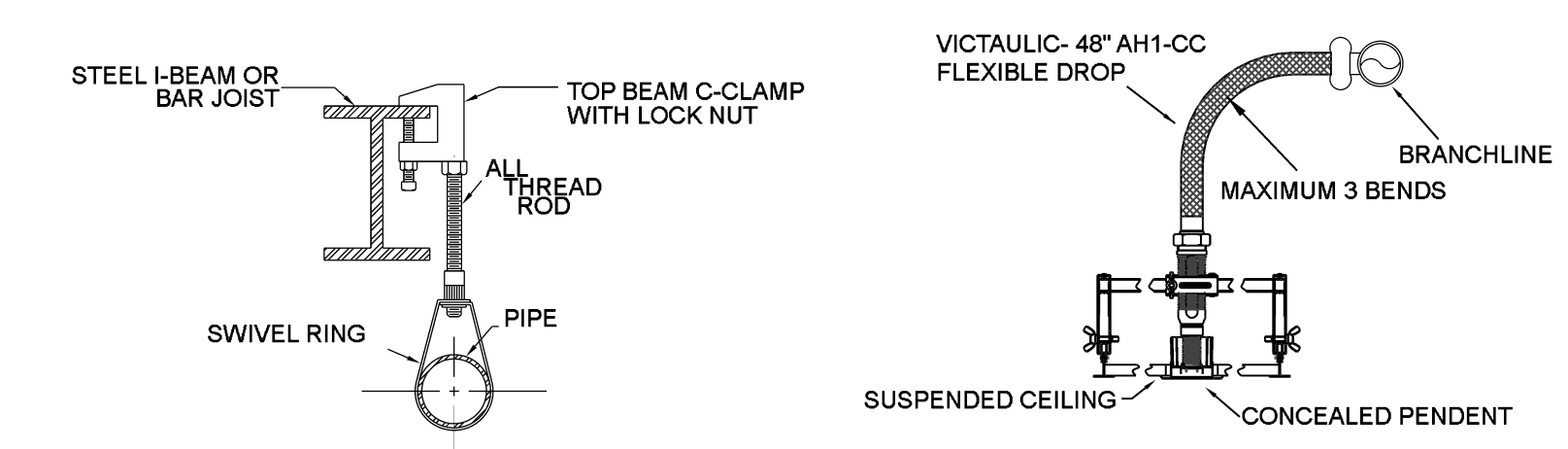


A BUILDING SECTION
SCALE: 1/8" = 1'-0"



B BUILDING SECTION
SCALE: 1/8" = 1'-0"

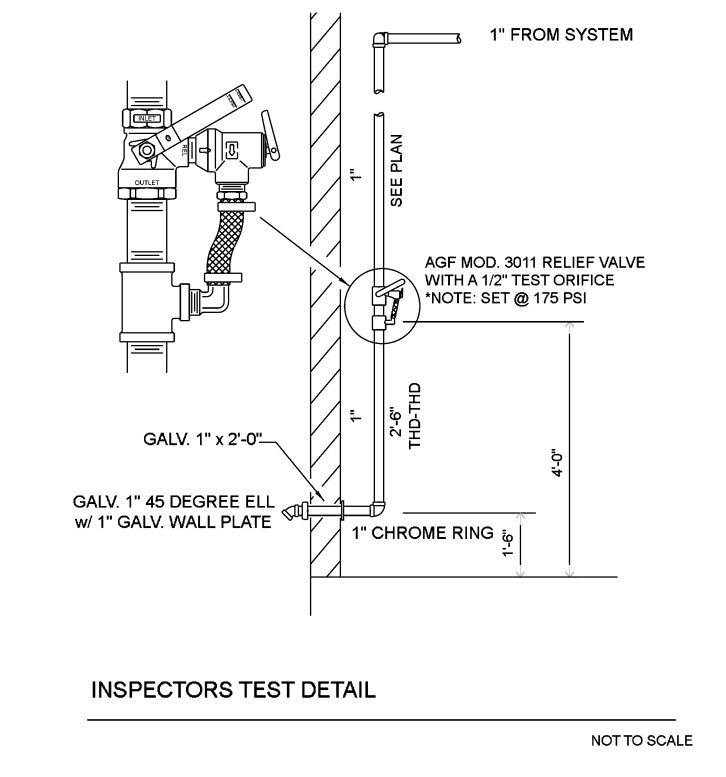
Sprinkler Legend												
Symbol	Manufacturer	SIN	Model	Quantity	K-Factor	Type	Size	Response	Finish	Temp	Note	MAX SPACING
●	Viking	VK4621	Microfast	23	5.6	Concealed Pendent	1/2"	Quick	Brass	155 °F	WHITE PLATE CONCEALED	15' x 15'
○	Viking	VK300	Microfast	25	5.6	Upright	1/2"	Quick	Brass	155 °F	N/A	15' x 15'
●	Viking	VK302	Microfast	27	5.6	Pendent	1/2"	Quick	Brass	200 °F	RECESSED	15' x 15'
▲	Viking	VK172	Microfast	4	5.6	Pendent	1/2"	Quick	Brass	200 °F	HB ESCUTCHEON	15' x 15'
▶	Viking	VK305	Microfast	1	5.6	Horizontal Sidewall	1/2"	Quick	Brass	155 °F	N/A	14' x 14'
				Total = 80								



HANGER DETAILS
NOT TO SCALE

MAXIMUM DISTANCE BETWEEN HANGERS (FT.-IN.)

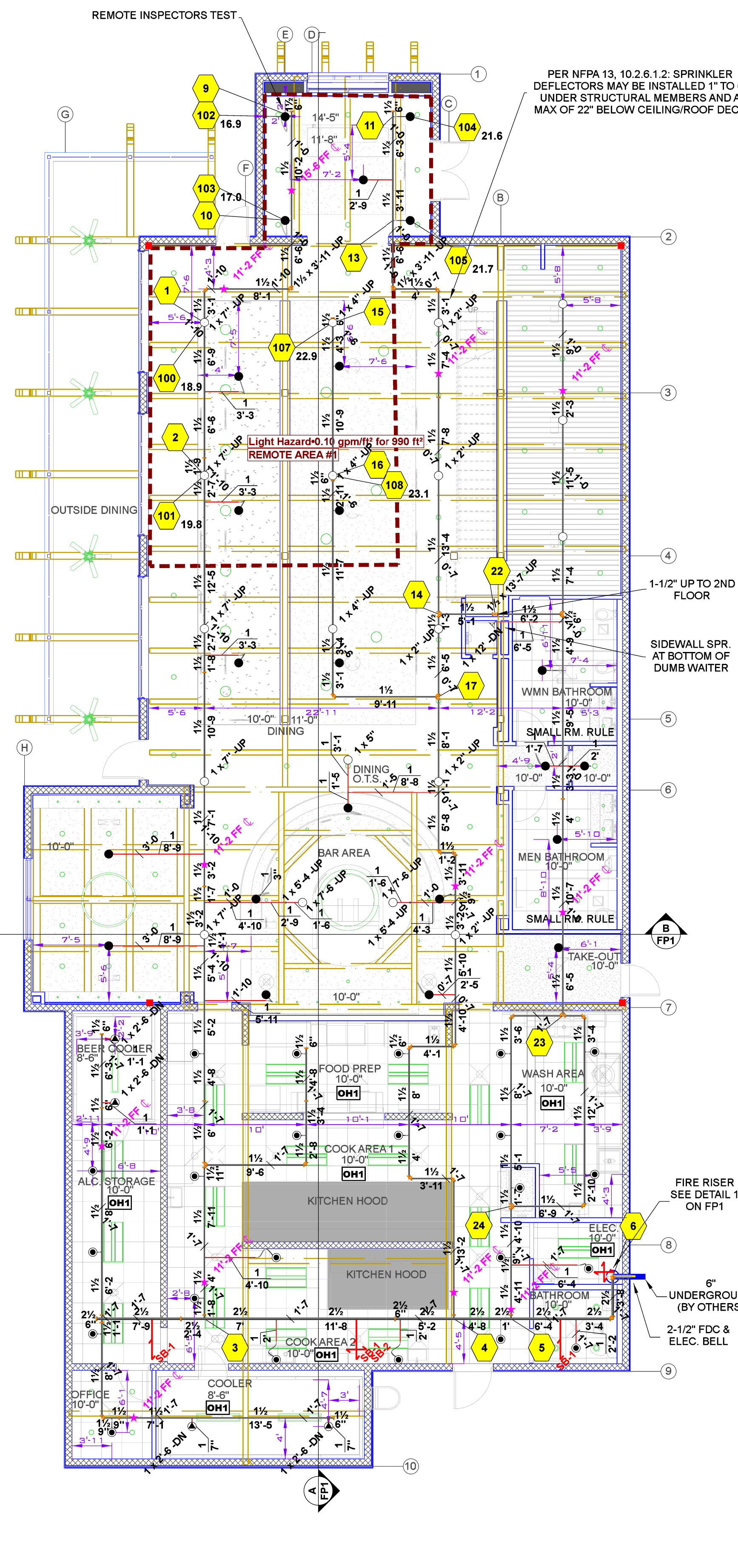
	3/4"	1"	1 1/4"	1 1/2"	2"	2 1/2"	3"	4"	6"	8"
STEEL PIPE EXCEPT THREADED LIGHTWALL	NA	12-0	12-0	15-0	15-0	15-0	15-0	15-0	15-0	15-0
THREADED LIGHTWALL STEEL PIPE	NA	12-0	12-0	12-0	12-0	NA	NA	NA	NA	NA



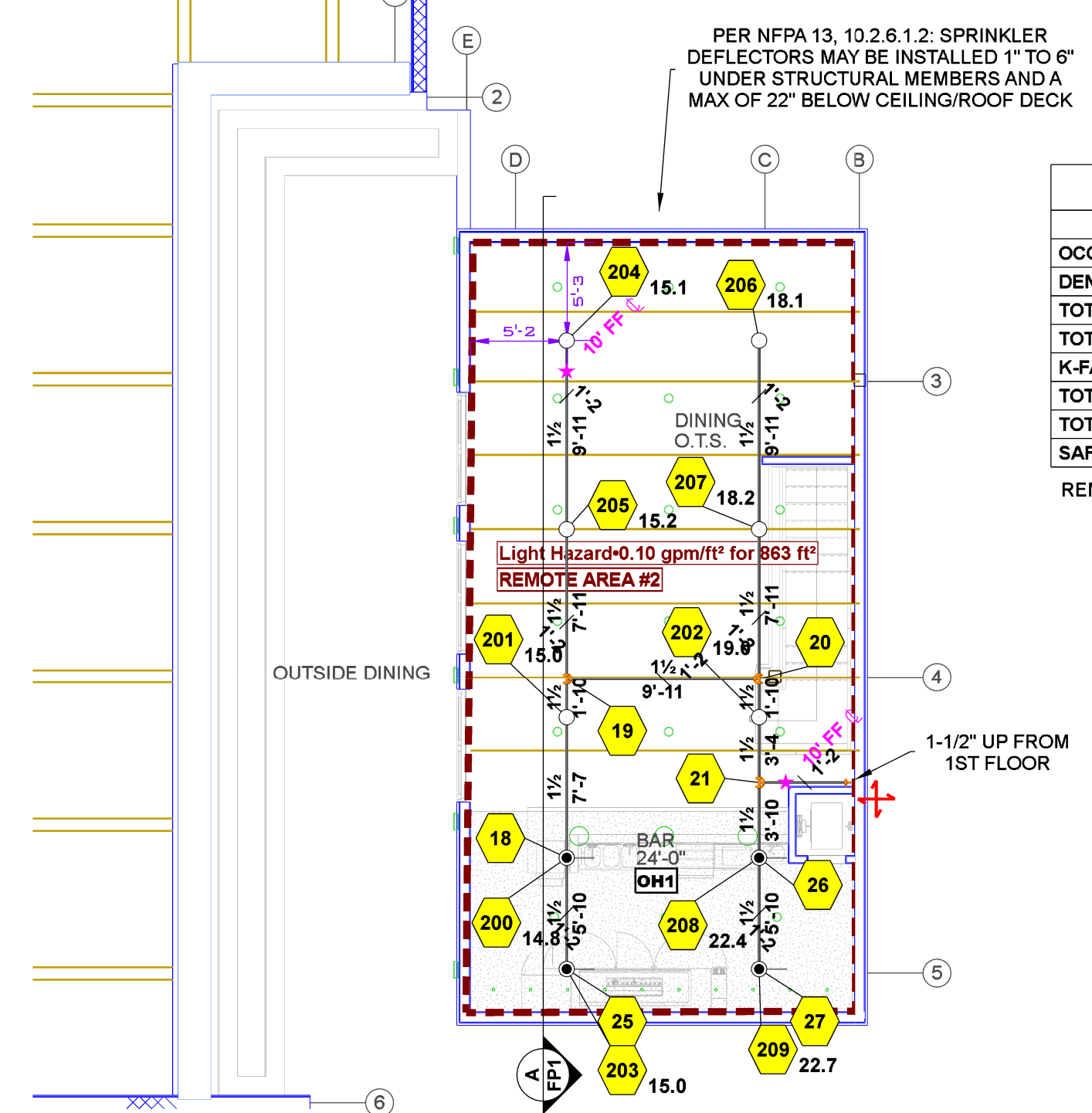
INSPECTORS TEST DETAIL
NOT TO SCALE

Hydraulic Information	
Remote Area 1	
OCCUPANCY CLASSIFICATION	Light Hazard
DENSITY (gpm/ft²)	0.10 for 1500 ft² (Actual 990 ft²)
TOTAL HOSE STREAMS	100.0
TOTAL HEADS FLOWING	8
K-FACTOR	5.6
TOTAL WATER REQUIRED	261.8
TOTAL PRESSURE REQUIRED	38.2
SAFETY MARGIN (psi)	+57.3 (60.0%)

REMOTE AREA 1 WAS CALCULATED USING THE DENSITY AREA METHOD IN ACCORDANCE WITH SECTION 19.2.3.2



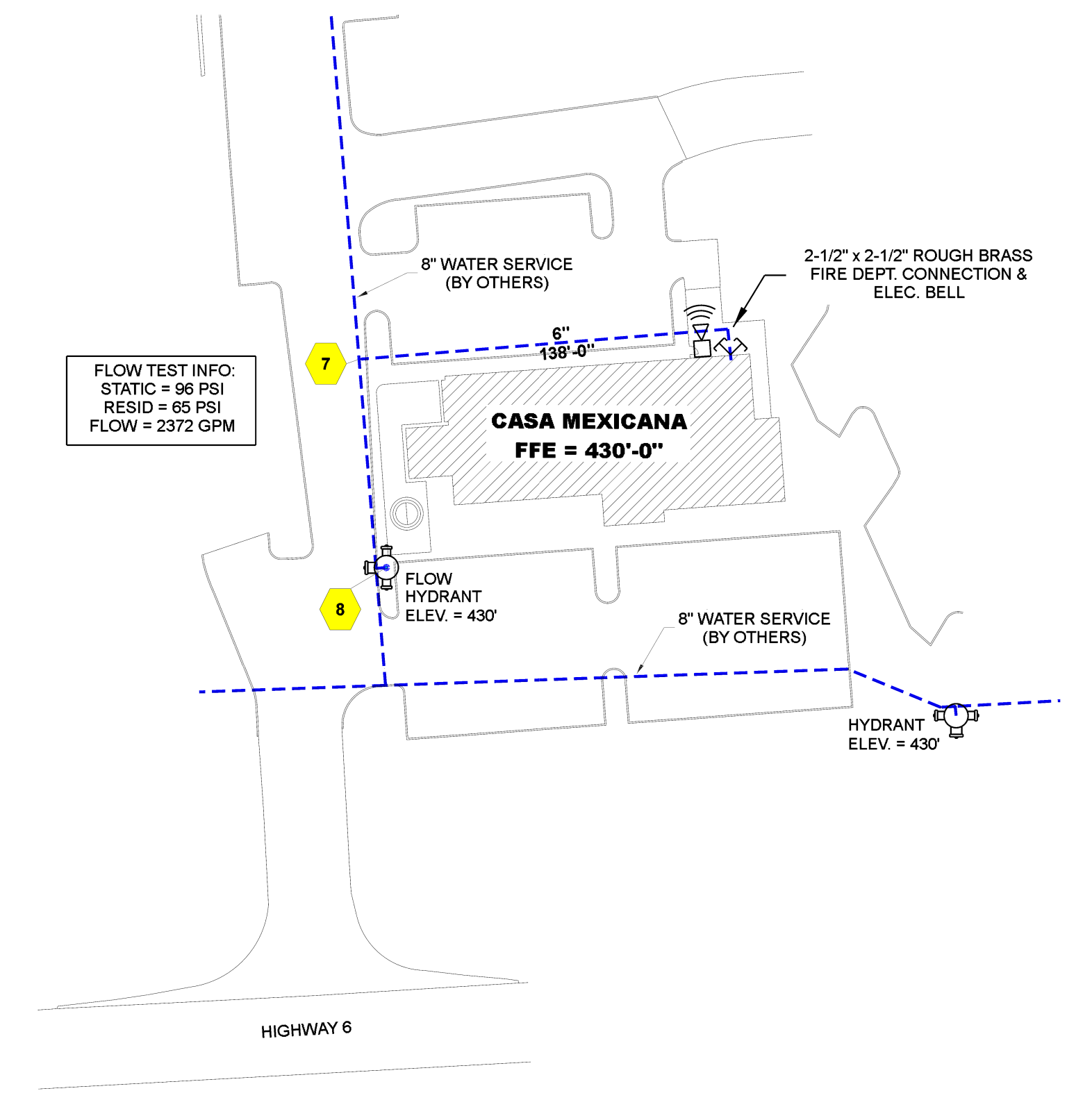
1ST FLOOR FIRE SPRINKLER PLAN
SCALE: 1/8" = 1'-0"



2ND FLOOR FIRE SPRINKLER PLAN
SCALE: 1/8" = 1'-0"

Hydraulic Information	
Remote Area 2	
OCCUPANCY CLASSIFICATION	Light Hazard
DENSITY (gpm/ft²)	0.10 for 1500 ft² (Actual 863 ft²)
TOTAL HOSE STREAMS	100.0
TOTAL HEADS FLOWING	10
K-FACTOR	5.6
TOTAL WATER REQUIRED	275.5
TOTAL PRESSURE REQUIRED	82.0
SAFETY MARGIN (psi)	+13.4 (14.0%)

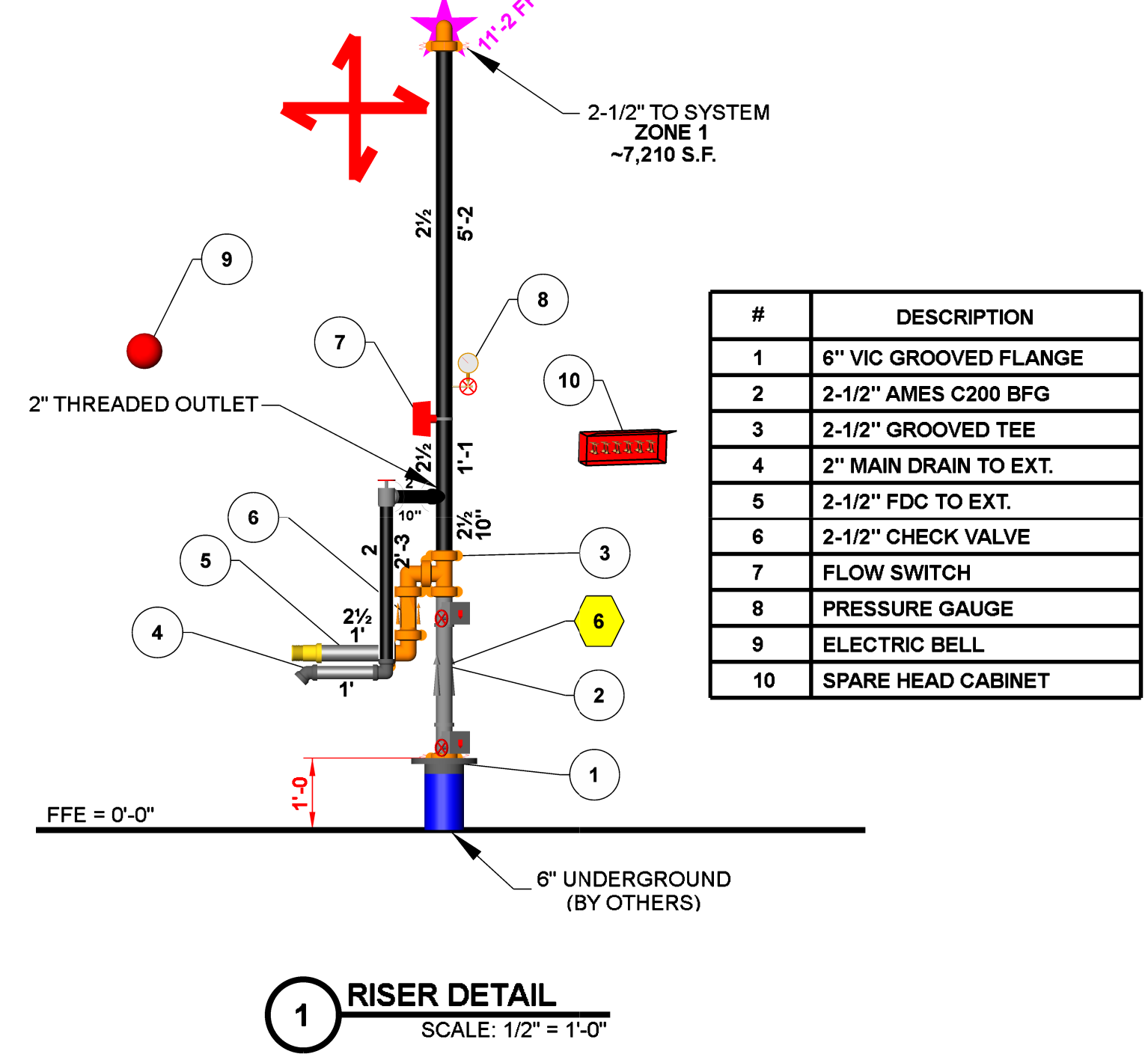
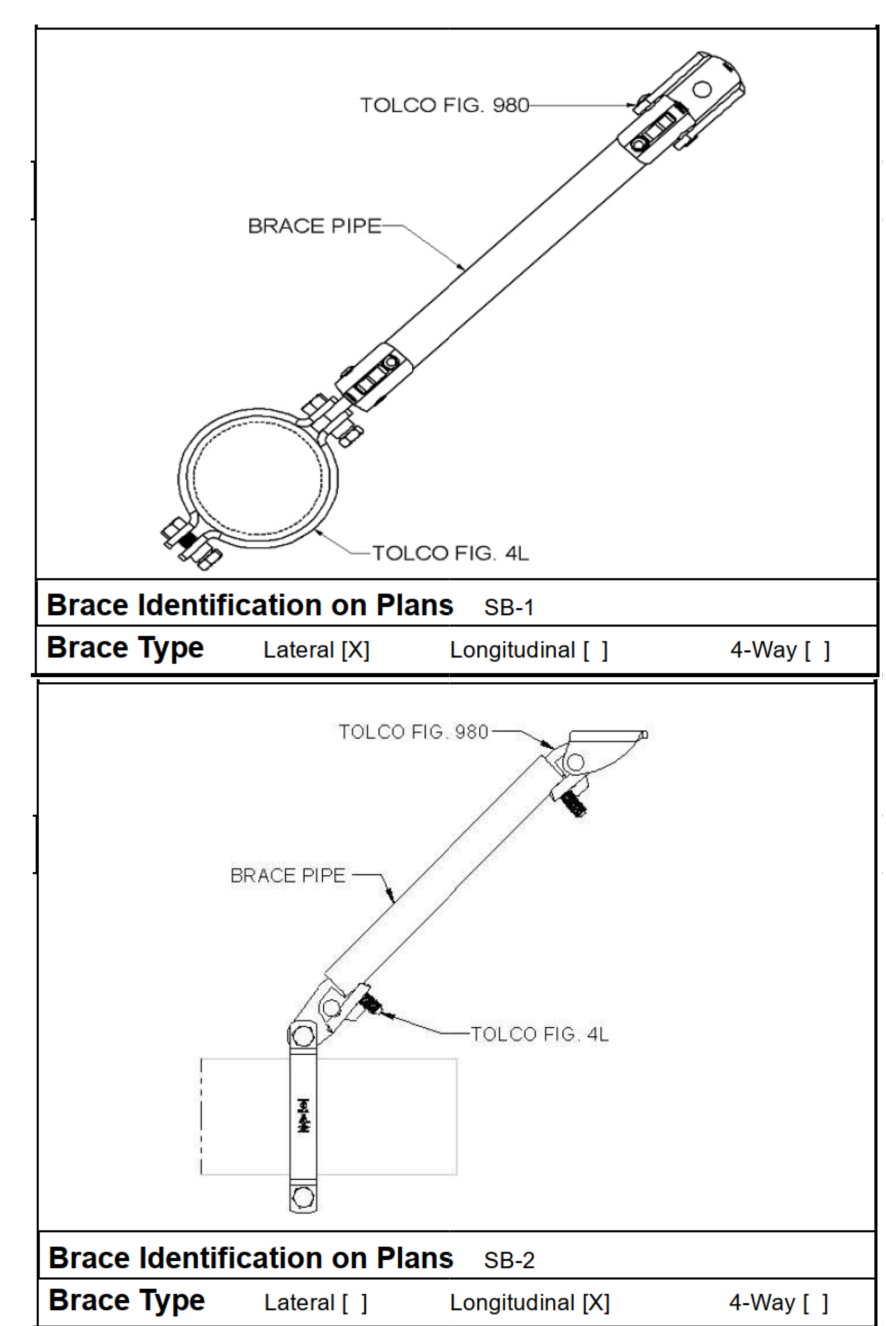
REMOTE AREA 2 WAS CALCULATED USING THE ROOM DESIGN METHOD IN ACCORDANCE WITH SECTION 19.2.3.3



SITE PLAN
SCALE: 1" = 50'-0"

SEISMIC DETAILS

SEISMIC KEY:	
LATERAL BRACE	1/2" x 3/4"
LONGITUDINAL BRACE	1/2" x 3/4"



1 RISER DETAIL
SCALE: 1/2" = 1'-0"

#	DESCRIPTION
1	6" VIC GROOVED FLANGE
2	2-1/2" AMES C200 BFG
3	2-1/2" GROOVED TEE
4	2" MAIN DRAIN TO EXT.
5	2-1/2" FDC TO EXT.
6	2-1/2" CHECK VALVE
7	FLOW SWITCH
8	PRESSURE GAUGE
9	ELECTRIC BELL
10	SPARE HEAD CABINET

- GENERAL INFORMATION**
- INTERNATIONAL BUILDING CODE (2018)
 - OCCUPANCY: TYPE A-2
 - TYPE OF CONSTRUCTION: II-B
 - SPRINKLERED AREAS (APPROXIMATE - SEE ARCHITECTURAL PLANS FOR ACTUAL)
 - TOTAL AREA = 7,210 S.F. 1ST FLOOR = 6,265 S.F. 2ND FLOOR = 945 S.F.
 - DESIGN & INSTALLATION STANDARDS: NFPA-13 (2022)
 - SPRINKLER PIPE TYPES:
 - WET-
 - 2.1 1" PIPE TO BE SCHEDULE 40 BLACK STEEL w/ THREADED FITTINGS
 - 2.2 1-1/4" THROUGH 2-1/2" MAINS & BRANCH LINES TO BE BLK SCHEDULE 10 w/ GROOVED FITTINGS
 - 2.3 MAINS & BRANCH LINES TO BE ROLL-GROOVED BLK SCHEDULE 10
 - 2.4 2" AND LARGER TO USE GROOVED SHORT RADIUS FITTINGS
 - DESIGN CRITERIA:
 - LIGHT HAZARD AREAS INCLUDE RESTROOMS, DINING AREAS, AND OFFICES
 - ORDINARY HAZARD GROUP I AREAS INCLUDE ELECTRICAL ROOMS, COOKING AREAS, STORAGE, AND WALK-IN COOLERS
 - NOTES:
 - ALL MATERIAL TO BE NEW AND MEET U.L. STANDARDS
 - HANGERS TO BE INSTALLED IN ACCORDANCE WITH NFPA 13 - SEE PLAN FOR HANGING
 - SYMBOLS USED ON DRAWINGS:
 - *x+ff Pipe Elevation ABOVE FINISH FLOOR
 - OH1 ROOM HAZARD CLASSIFICATION (ALL ROOMS ARE CONSIDERED LIGHT HAZARD U.N.O.)
 - Hydraulic Calculation Junction Point
 - Ceiling Height
 - Pipe Hangers
 - Wet Black Steel Pipe
 - Wet Black Steel 1" Drop/Sprig
 - Wet Black Steel 1" Arm Over
 - Steel I-Beam
 - SCOPE OF WORK:
 - INSTALL A COMPLETE SINGLE ZONE WET FIRE SPRINKLER SYSTEM TO COVER ALL AREAS OF BUILDING
 - ALL AREAS OF THE BUILDING TO BE INSTALLED AND COVERED IN ACCORDANCE WITH THE LOCAL AUTHORITY HAVING JURISDICTION AND PER NFPA 13

REVISIONS		
NO.	DATE	BY
1		
2		
3		
4		
5		

- THIS DRAWING ISSUED FOR:
- PRE-BID SCHEMATIC
 - BID SCHEMATIC INSTALLATION
 - AS-BUILT

CASA MEXICANA
1069 HWY 6 WEST
OXFORD, MS 38855
FIRE PROTECTION SITE PLAN

PROJECT NO.: 223074
DRAWN BY: ZBS
ISSUE DATE: 12/06/23

SHEET NUMBER
FP1 OF 1