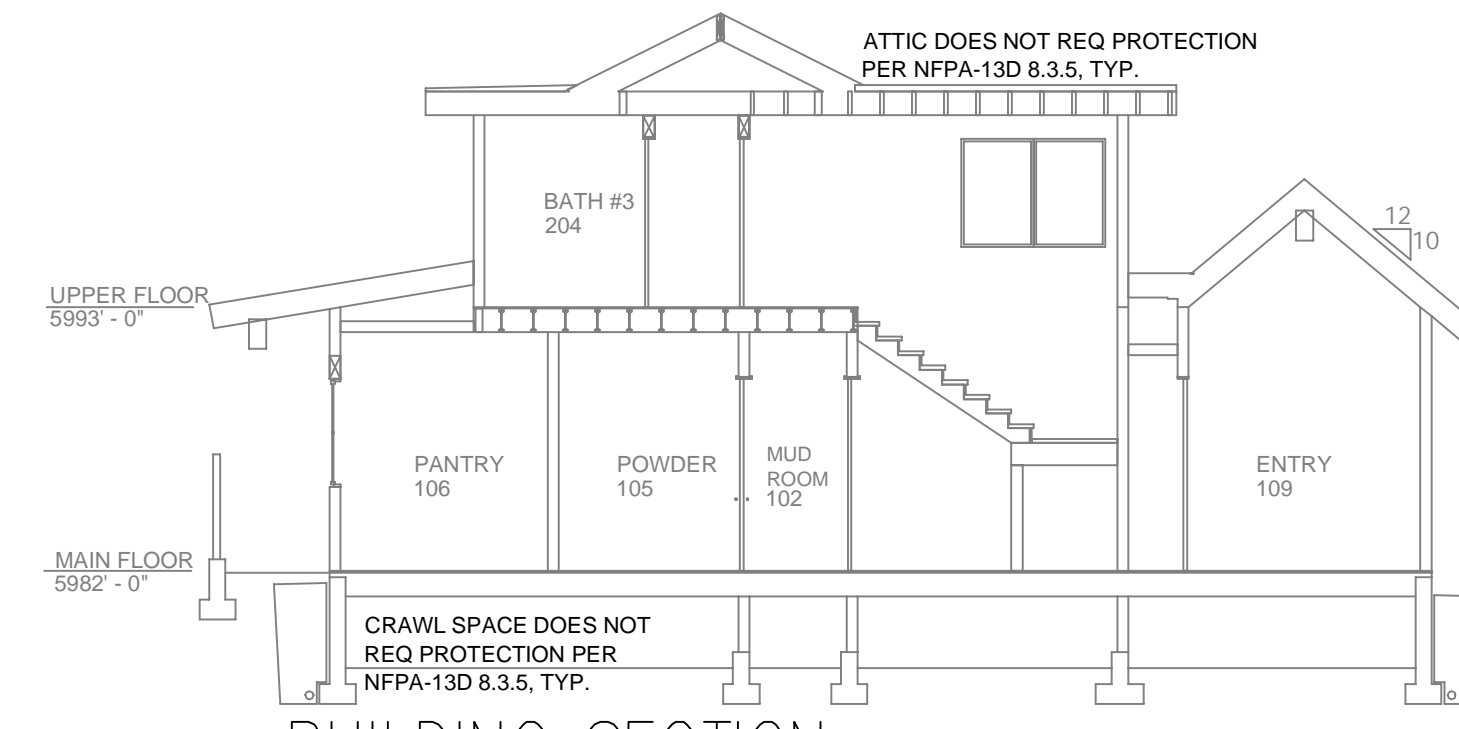


MAIN FLOOR FIRE SPRINKLER PLAN
SCALE: 1/8" = 1'-0"

UPPER FLOOR FIRE SPRINKLER PLAN
SCALE: 1/8" = 1'-0"



BUILDING SECTION

SCALE: 1/8" = 1'-0"

PROJECT SQUARE FOOTAGES

MAIN FLOOR = 2997 S.F.
UPPER FLOOR = 1551 S.F.

NO SPRINKLERS REQUIRED IN:
BATHROOMS 55 SQ. FT. OR LESS IN AREA PER NFPA 13D SECTION 8.5.2.
CLOSETS 24 SQ. FT. OR LESS IN AREA PER NFPA 13D SECTION 8.5.3

HEAT SOURCE:	SPRINKLER HEAT ZONES:	
	ORDINARY TEMP SPRINKLER	INTERMEDIATE TEMP SPRINKLER
SIDE OF OPEN OR RECESSED FIRE PLACE	36"	12"
FRONT OF RECESSED FIRE PLACE	60"	36"
COAL OR WOOD BURNING STOVE	42"	12"
RANGE/OVEN, HOT AIR FLUES & UNINSULATED HEAT DUCT	18"	9"
UNINSULATED HOT WATER PIPES & 250-499 WATT LIGHTS	12"	6"
SIDE OF CEILING OR WALL MOUNTED HOT AIR DIFFUSERS	24"	12"
FRONT OF WALL MOUNTED HOT AIR DIFFUSERS	36"	18"
HOT WATER HEATER, FURNACE, LIGHT FIXTURE 0-250 WATT	6"	3"

PROJECT SUMMARY:

PROJECT NAME: ROSSI RESIDENCE
PROJECT ADDRESS: 11054 CHINA CAMP RD, TRUCKEE, CA 96161
APN: 019-770-003
PROJECT TYPE: NEW T.I.
TYPE OF CONSTRUCTION: V
OCCUPANCY GROUP(S): R3
OCCUPIED LEVELS: 2
TOTAL SPRINKLERED AREA: 4548 SQ. FT.
NFPA CODE REQUIREMENT: NFPA 13 NFPA 13R NFPA 13D
NUMBER OF SYSTEMS: 1
SYSTEM TYPE(S): WET ANTI-FREEZE DRY PREACTION
TOTAL SPRINKLERS: 58
SPECIAL NOTES: SEE FIRE SPRINKLER NOTES THIS SHEET

SPRINKLER SPACING

- 3.7K PENDENT SPRINKLERS MAY BE SPACED AT A MAX OF 14'x14' (196 SF) OR UP TO 7' OFF A WALL. (MIN 8'-0" BETWEEN SPRINKLERS)
- 4.9K PENDENT SPRINKLERS MAY BE SPACED AT A MAX OF 16'x16' (256 SF) OR UP TO 8' OFF A WALL. (MIN 8'-0" BETWEEN SPRINKLERS)
- SPRINKLERS SHALL BE MEASURED AT PERPENDICULAR ANGLES TO WALLS AND ALONG THE SLOPES OF CEILING.

NFPA 13 - Table 9.2.2.1(a) Maximum Distance Between Hangers (ft.-in.)

	Nominal Pipe Size (in.)							
	1/2	3/4	1	1 1/2	2	2 1/2	3	4
Steel Pipe except threaded lightwall	N/A	12-0	12-0	15-0	15-0	15-0	15-0	15-0
Threaded lightwall steel pipe	N/A	12-0	12-0	15-0	15-0	15-0	N/A	N/A
Copper tube	8-0	8-0	10-0	10-0	12-0	12-0	15-0	15-0
CPVC	5-6	6-0	6-6	7-0	8-0	9-0	10-0	N/A

REMOTE AREA 3

Hydraulically Calculated System

This system as shown on Fire Protection Plan company print no. FPI dated 11/13/2023 for ROSSI RESIDENCE at HALLWAY STAIRS contract no. is designed to discharge at a rate of 0.05 gpm (L/min) per sq ft (m²) of floor area over a maximum area of NFPA 13D - 2 SPRINKLERS sq ft (m²) when supplied with water at the rate of 31.1 gpm (L/min) at 37.7 psi (bars) at the base of the riser. Hose stream allowance of 5 gpm (L/min) is included in the above.

Occupancy classification: 130 LIGHT HAZARD
Commodity classification: N/A
Maximum storage height: N/A
Safety factor: 25.2

REMOTE AREA 1

Hydraulically Calculated System

This system as shown on Fire Protection Plan company print no. FPI dated 11/13/2023 for ROSSI RESIDENCE at GREAT ROOM contract no. is designed to discharge at a rate of 0.05 gpm (L/min) per sq ft (m²) of floor area over a maximum area of NFPA 13D - 3 SPRINKLERS sq ft (m²) when supplied with water at the rate of 36.5 gpm (L/min) at 49.1 psi (bars) at the base of the riser. Hose stream allowance of 5 gpm (L/min) is included in the above.

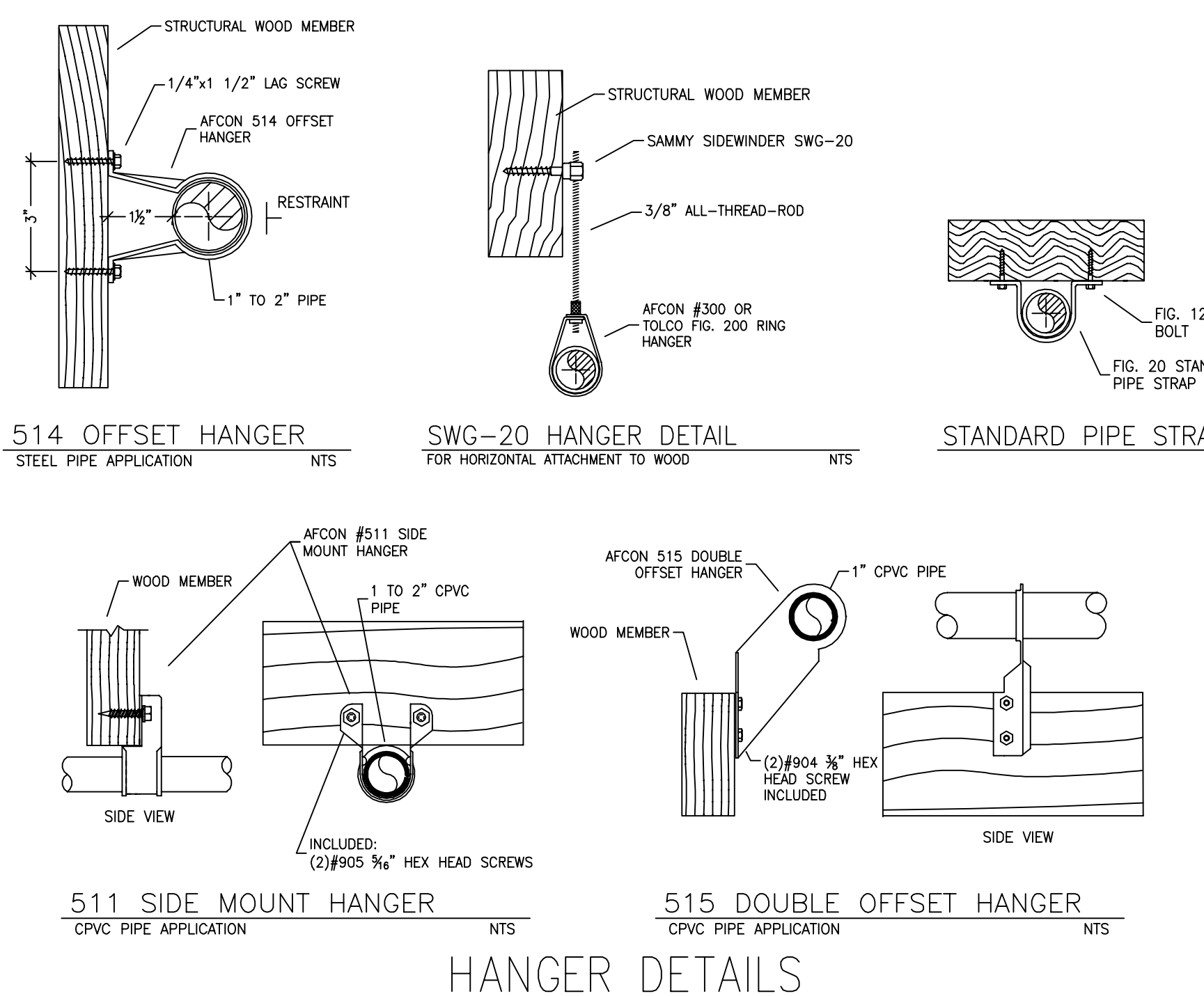
Occupancy classification: 130 LIGHT HAZARD
Commodity classification: N/A
Maximum storage height: N/A
Safety factor: 10.7

REMOTE AREA 2

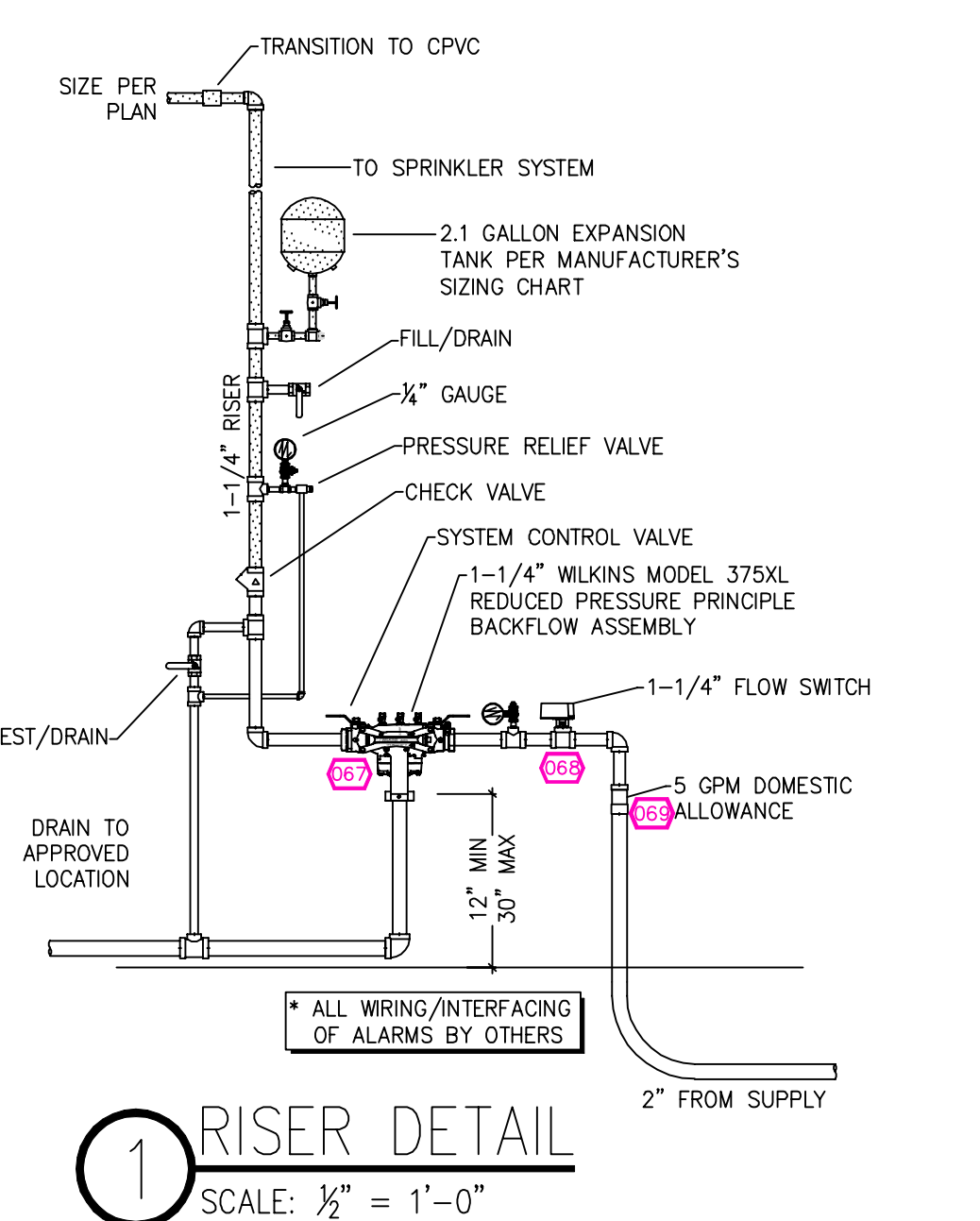
Hydraulically Calculated System

This system as shown on Fire Protection Plan company print no. FPI dated 11/13/2023 for ROSSI RESIDENCE at PRIMARY BEDROOM contract no. is designed to discharge at a rate of 0.05 gpm (L/min) per sq ft (m²) of floor area over a maximum area of NFPA 13D - 3 SPRINKLERS sq ft (m²) when supplied with water at the rate of 36.0 gpm (L/min) at 51.9 psi (bars) at the base of the riser. Hose stream allowance of 5 gpm (L/min) is included in the above.

Occupancy classification: 130 LIGHT HAZARD
Commodity classification: N/A
Maximum storage height: N/A
Safety factor: 8.2



HANGER DETAILS



1 RISER DETAIL
SCALE: 1/2" = 1'-0"

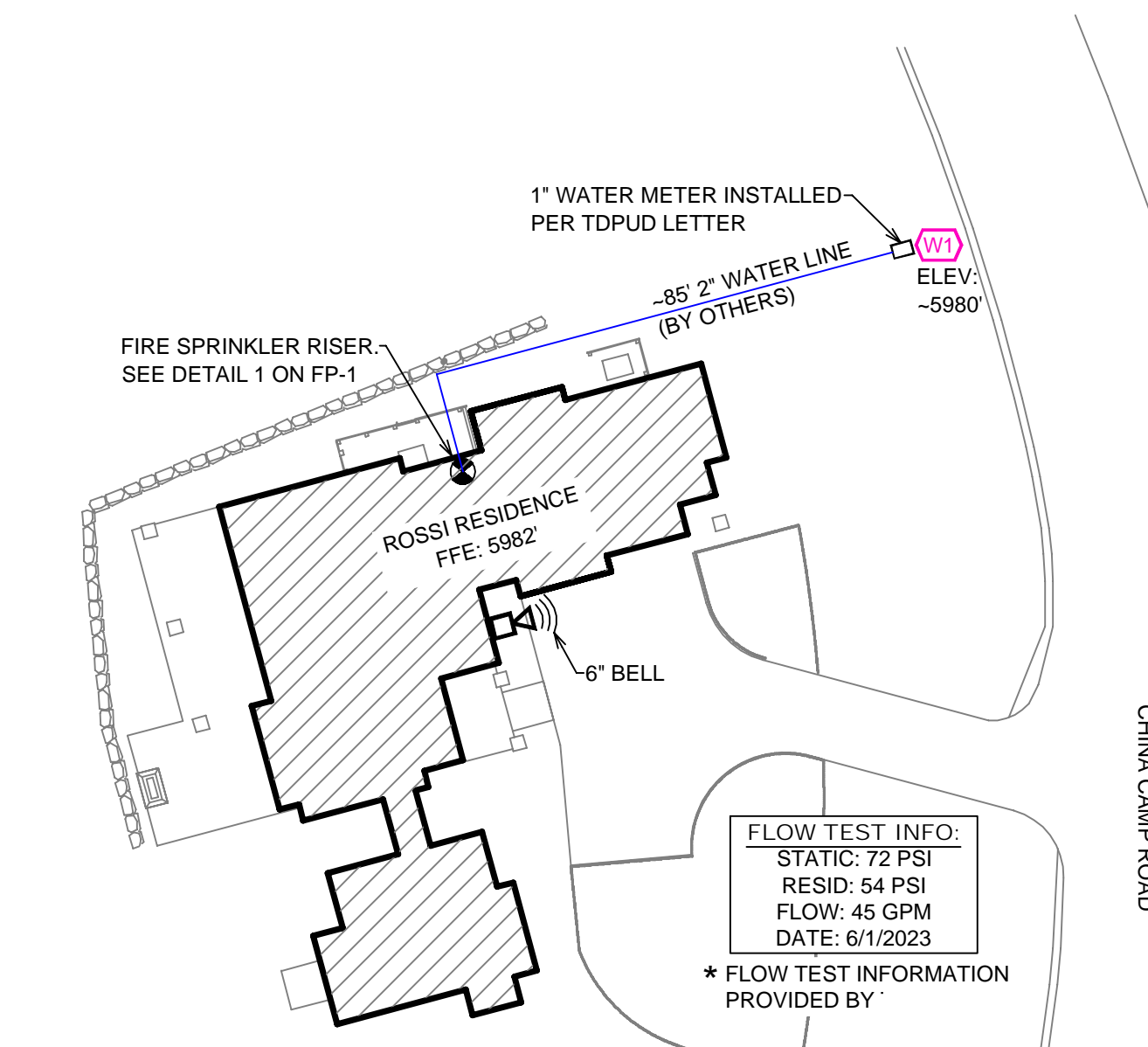
NFPA 13 - Table A.7.2.3 Capacity of 1 ft of pipe (Based on Actual Internal Pipe Diameter)

Nominal Pipe Diameter (in.)	Pipe Capacity (gall)	
	Schedule 40	Schedule 10
1	0.045	0.049
1 1/2	0.078	0.085
2	0.106	0.115
2 1/2	0.174	0.190
3	0.248	0.283

PIPE VOLUMES: (CPVC)

TOTAL PIPE FOOTAGE AND CAPACITY:
1" = 372' (18.40 GAL)
1-1/4" = 111' (8.80 GAL)

ADD 10% FOR DROPS AND PIPE SIZE DISCREPANCIES
TOTAL VOLUME: ±29.92 GALLONS



SITE PLAN
SCALE: 1" = 25'-0"

NO.	DATE	REVISIONS	DRAWN	CHECKED

GENERAL CONTRACTOR: AUTHORITY HAVING JURISDICTION:
ADDRESS: TOWN OF TRUCKEE BUILDING DIVISION
CITY: TRUCKEE, CA 96161
PHONE: 530-582-7820
CONTACT: CONTACT:

ARCHITECT: FIELD INSPECTIONS:
ADDRESS: 2.
CITY: 3.
PHONE: 4.

FIRE SPRINKLER NOTES:

- THE PROPOSED FIRE SPRINKLER SYSTEM IS AN ANTI-FREEZE SYSTEM AND SHALL BE DESIGNED AND INSTALLED IN ACCORDANCE WITH NFPA 13D AND THE AUTHORITY HAVING JURISDICTION.
- THIS SPRINKLER SYSTEM IS HYDRAULICALLY CALCULATED IN ACCORDANCE WITH NFPA 13D TO PROVIDE 0.05 GPM PER SQ. FT. OVER THE MOST REMOTE AREA.
- THE NUMBER OF DESIGN SPRINKLERS SHALL INCLUDE ALL SPRINKLERS WITHIN A COMPARTMENT UP TO A MAXIMUM OF 2 SPRINKLERS.
- FOR SLOPED CEILING EXCEEDING 8:12 THE NUMBER OF DESIGN SPRINKLERS SHALL BE INCREASED TO INCLUDE 3 SPRINKLERS IN A COMPARTMENT.
- ALL SPRINKLER PIPING CONCEALED ABOVE CEILING SHALL BE CPVC PIPING UNLESS OTHERWISE NOTED.
- ALL DIMENSIONS SHOWN ARE CENTER TO CENTER U.O.N.
- ALL HANGERS SHALL BE INSTALLED IN ACCORDANCE WITH NFPA 13D AND/OR NFPA 13 REQUIREMENTS.
- HOLES THROUGH SOLID STRUCTURAL MEMBERS SHALL BE PERMITTED TO SERVE AS HANGERS FOR THE SUPPORT OF SYSTEM PIPING.
- ALL SYSTEM PIPING SHALL BE TESTED FOR LEAKAGE AT NORMAL SYSTEM OPERATING PRESSURE.
- THE OWNER SHALL BE RESPONSIBLE FOR MAINTAINING A MINIMUM TEMPERATURE OF 40° FAHRENHEIT TO PROTECT FROM FREEZING. THE SECTIONS OF THE SPRINKLER SYSTEM WHERE THERE IS NO ANTI-FREEZE IN THE PIPING (UPSTREAM OF THE RISER).

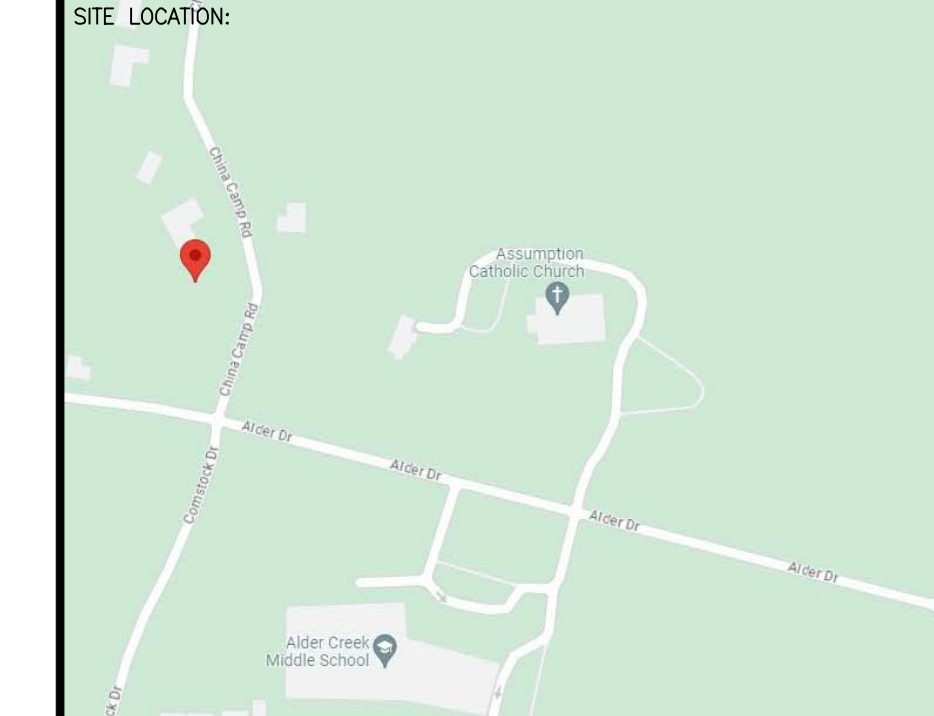
SPRINKLER HEAD LEGEND

SYM	QTY	TYPE	WFG.	MODEL	NPT	K	TEMP	FINISH	S.I.N.
⊙	28	CONCEALED	SEN/J	RC-RES	1/2"	4.9	162	WHITE	SS8464
⊙	1	CONCEALED	SEN/J	RC-RES	1/2"	4.9	205	WHITE	SS8464
⊙	7	SEMI-RECESS	SEN/J	FR-RES	1/2"	4.9	205	WHITE	SS4451
⊙	22	CONCEALED	SEN/J	RC-RES	1/2"	3.7	162	WHITE	SS8261

58 TOTAL SPRINKLERS

FIRE SPRINKLER SYMBOLS

- ⊙ AUTOMATIC SPRINKLER RISER
- ⊕ EARTHQUAKE BRACING
- ⊖ 2-WAY & 4-WAY
- ⊗ PIPE HANGER & TYPE DESIGNATION
- ⊘ HYDRAULIC REF PT
- ⊙ GRVD OR THRD CAP
- ⊕ GRVD COUPLING
- ⊕ TYPICAL POINT OF CONNECTION (POC)
- ⊕ 13" ELEV. BELOW DECK OR TOS
- ⊕ 12"-9" ELEV. ABOVE FINISHED FLOOR
- ⊕ CHANGE ELEVATION UP
- ⊕ CHANGE ELEVATION DN
- ⊕ INSPECTORS TEST
- ⊕ AUX DRAIN
- ⊕ REVISION NOTATION
- ⊕ LOCAL ALARM



PROJECT NAME: FIRE SPRINKLER PLANS FOR ROSSI RESIDENCE
11054 CHINA CAMP ROAD TRUCKEE, CA

DRAWING TITLE: FIRE SPRINKLER PLAN

SCALE: 1/8" = 1'-0" JOB NO.:
DRAWN BY: DWG NO.:
BORN ON DATE: 11/14/2023 FILE: FP-1
SHEET 1 OF 1