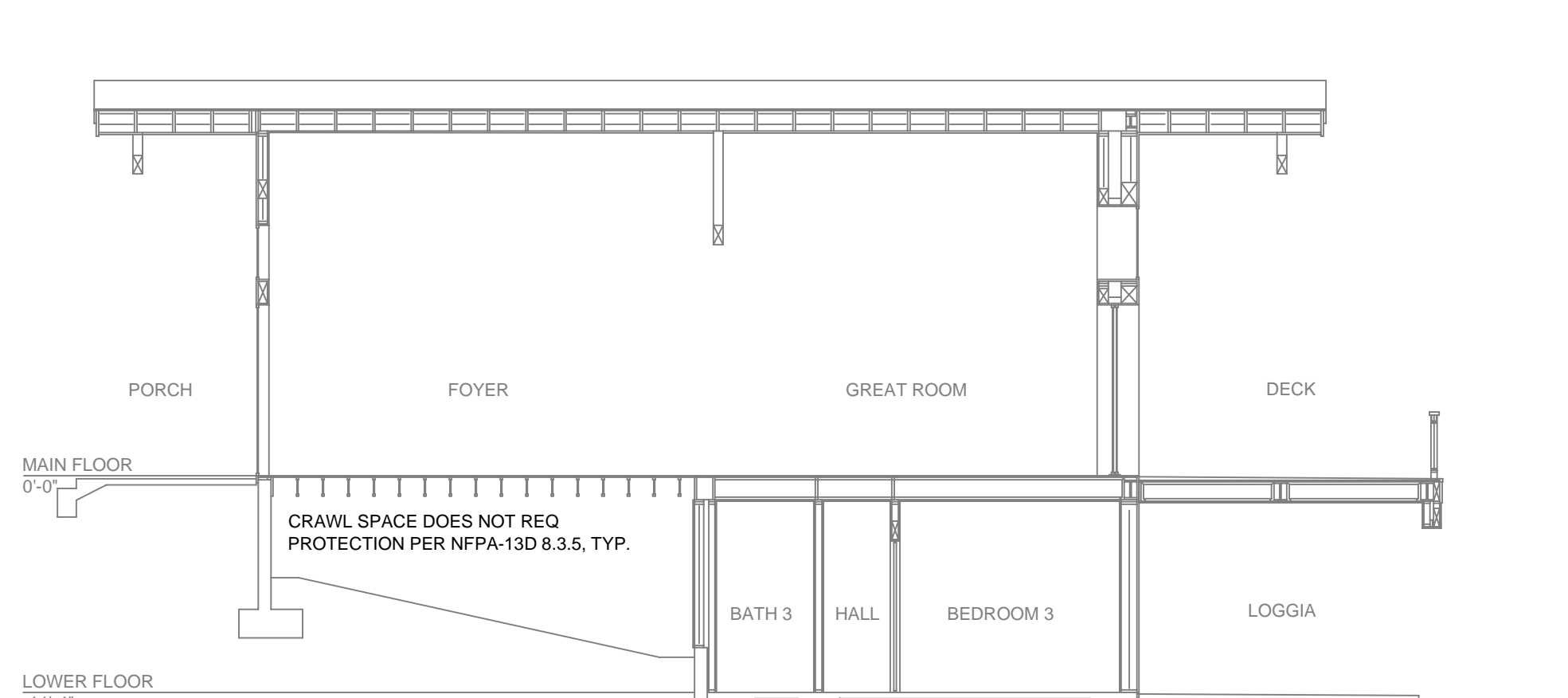


LOWER FLOOR FIRE SPRINKLER PLAN
SCALE: 1/8" = 1'-0"



BUILDING SECTION
SCALE: 1/8" = 1'-0"

SUBMITTAL

NO SPRINKLERS REQUIRED IN:
BATHROOMS 55 SQ. FT. OR LESS IN AREA PER NFPA 13D SECTION 8.5.2
CLOSETS 24 SQ. FT. OR LESS IN AREA PER NFPA 13D SECTION 8.6.3

PROJECT SQUARE FOOTAGES
LOWER FLOOR = 1361 S.F.
MAIN FLOOR = 4274 S.F.

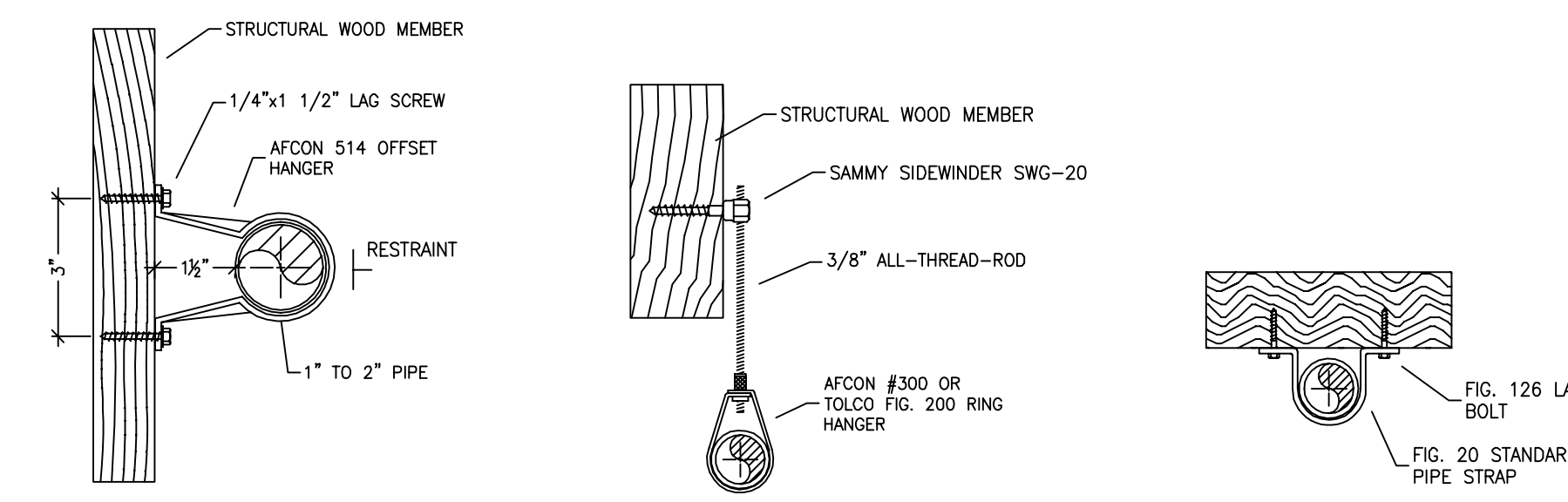
NFPA 13 - Table 9.2.2.1(a) Maximum Distance Between Hangers (ft.-in.)

| Nominal Pipe Size (in.) | Nominal Pipe Size (in.) | | | | | | | | | |
|--------------------------------------|-------------------------|------|-------|-------|------|-------|------|------|------|------|
| | 3/4 | 1 | 1 1/4 | 1 1/2 | 2 | 2 1/2 | 3 | 4 | 6 | 8 |
| Steel Pipe except threaded lightwall | N/A | 12-0 | 12-0 | 15-0 | 15-0 | 15-0 | 15-0 | 15-0 | 15-0 | 15-0 |
| Threaded lightwall steel pipe | N/A | 12-0 | 12-0 | 15-0 | 15-0 | 15-0 | 15-0 | N/A | N/A | N/A |
| Copper tube | 8-0 | 8-0 | 10-0 | 10-0 | 12-0 | 12-0 | 12-0 | 15-0 | 15-0 | 15-0 |
| CPVC | 5-6 | 6-0 | 6-6 | 7-0 | 8-0 | 9-0 | 10-0 | N/A | N/A | N/A |

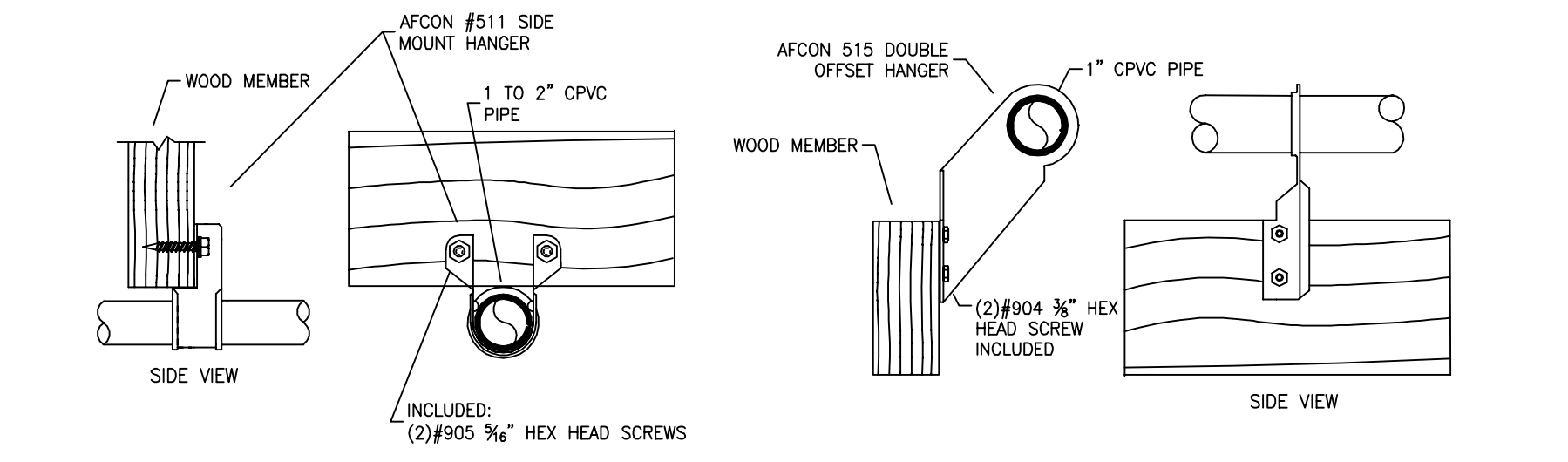
SPRINKLER SPACING

- A SINGLE PENDENT SPRINKLER MAY BE SPACED AT A MAXIMUM OF 16'x16' (256 SQ. FT.) OR UP TO 8' OFF A WALL (MINIMUM 8'-0" BETWEEN SPRINKLERS).
- TWO OR MORE HEADS IN A COMPARTMENT SHALL BE SPACED AT A MAXIMUM OF 16'x16' (256 SQ. FT.) OR UP TO 8' OFF A WALL (MINIMUM 8'-0" BETWEEN SPRINKLERS).
- SPRINKLERS SHALL BE MEASURED AT PERPENDICULAR ANGLES TO WALLS AND ALONG THE SLOPES OF CEILINGS.

THIS FIRE SPRINKLER SYSTEM UTILIZES THE NOBLE COMPANY FIREFIGHTER ELIMINATOR ANTI-FREEZE SOLUTION



514 OFFSET HANGER STEEL PIPE APPLICATION NTS
SWG-20 HANGER DETAIL FOR HORIZONTAL ATTACHMENT TO WOOD NTS
STANDARD PIPE STRAP NTS



511 SIDE MOUNT HANGER CPVC PIPE APPLICATION NTS
515 DOUBLE OFFSET HANGER CPVC PIPE APPLICATION NTS

HANGER DETAILS

SPRINKLER HEAT ZONES:

| HEAT SOURCE: | ORDINARY TEMP SPRINKLER | INTERMEDIATE TEMP SPRINKLER |
|---|-------------------------|-----------------------------|
| SIDE OF OPEN OR RECESSED FIRE PLACE | 36" | 12" |
| FRONT OF RECESSED FIRE PLACE | 60" | 36" |
| COAL OR WOOD BURNING STOVE | 42" | 12" |
| RANGE/OVEN, HOT AIR FLUES & UNINSULATED HEAT DUCT | 18" | 9" |
| UNINSULATED HOT WATER PIPES & 250-499 WATT LIGHTS | 12" | 6" |
| SIDE OF CEILING OR WALL MOUNTED HOT AIR DIFFUSERS | 24" | 12" |
| FRONT OF WALL MOUNTED HOT AIR DIFFUSERS | 36" | 18" |
| HOT WATER HEATER, FURNACE, LIGHT FIXTURE 0-250 WATT | 6" | 3" |

PROJECT SUMMARY:

PROJECT NAME: CLEAR CREEK LOT #98
PROJECT ADDRESS: 3363 GOLF CLUB DR, CARSON CITY, NV

APN: NEW T.I.

TYPE OF CONSTRUCTION: V R3

OCCUPANCY GROUP(S): 2

TOTAL SPRINKLERED AREA: 5635 SQ. FT.

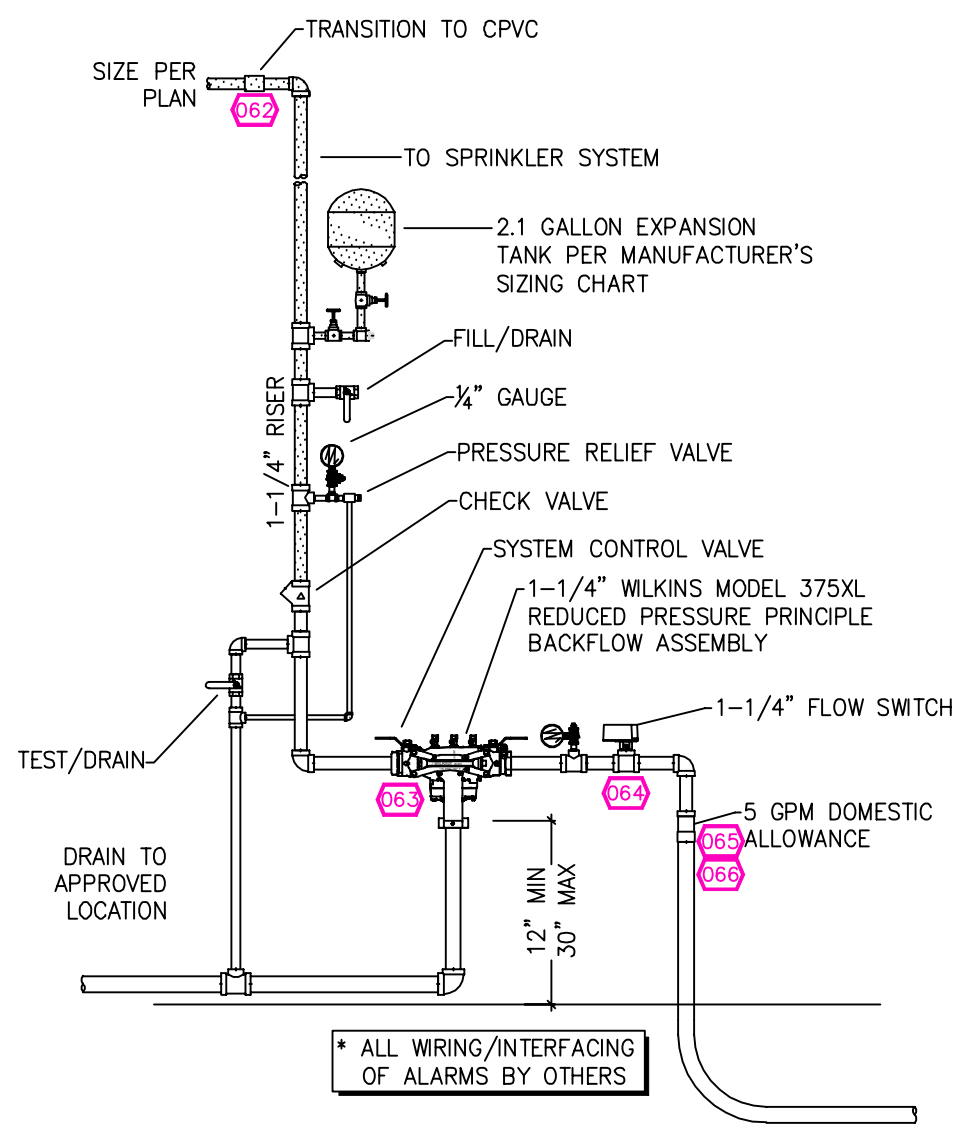
NFPA CODE REQUIREMENT: NFPA 13 NFPA 13R NFPA 13D

NUMBER OF SYSTEMS: 1

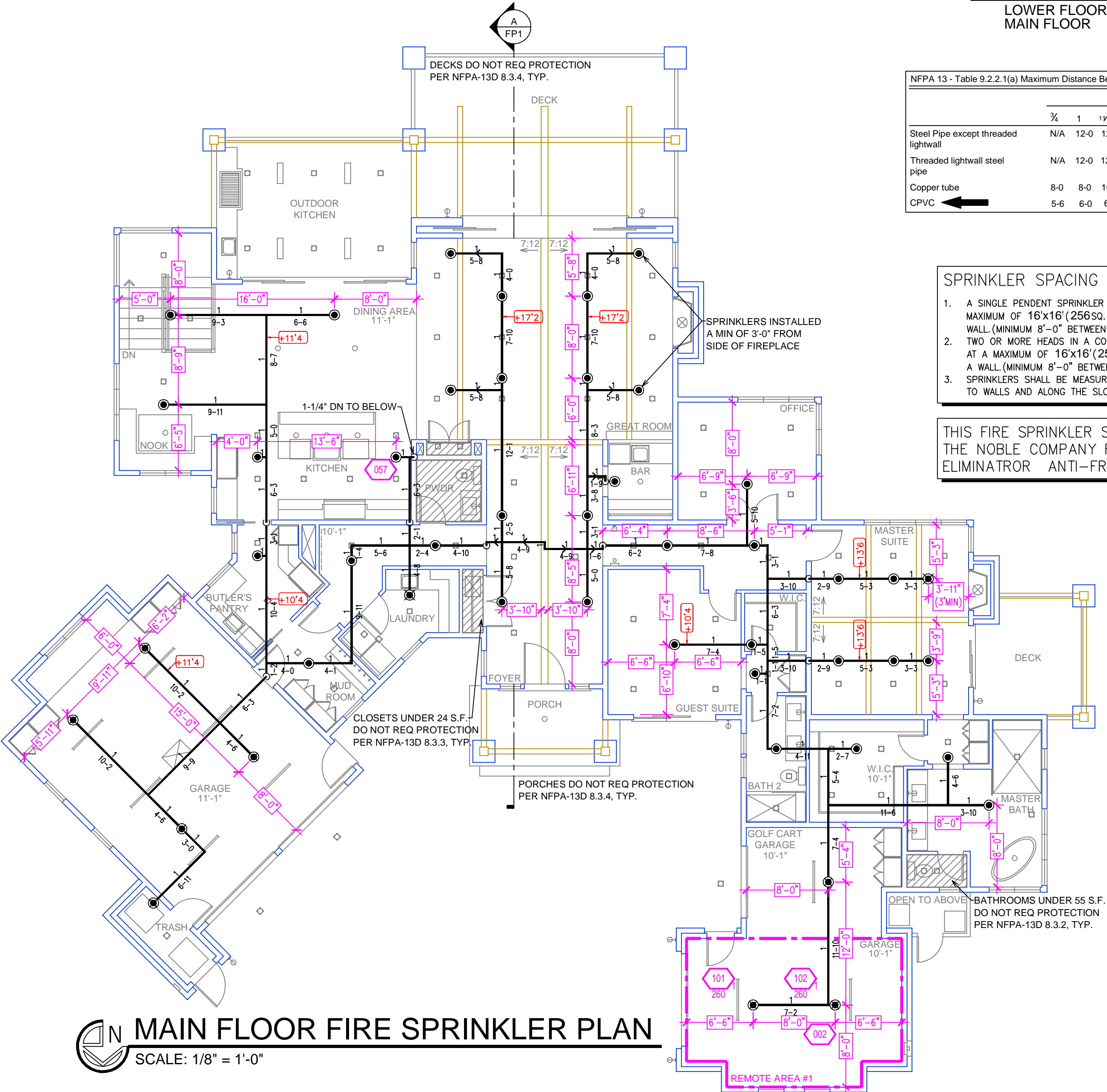
SYSTEM TYPE(S): WET ANTI-FREEZE DRY PREACTION

TOTAL SPRINKLERS: 57

SPECIAL NOTES: SEE FIRE SPRINKLER NOTES THIS SHEET



1 RISER DETAIL
SCALE: 1/2" = 1'-0"



MAIN FLOOR FIRE SPRINKLER PLAN
SCALE: 1/8" = 1'-0"

REMOTE AREA 1
Hydraulically Calculated System

This system as shown on Fire Protection Plan

company print no. FP1 dated 11/28/2023 for CLEAR CREEK LOT #98 at GARAGE contract no. _____

is designed to discharge at a rate of 0.05 gpm (L/min) per sq ft (m²) of floor area over a maximum area of _____ sq ft (m²) when supplied with water at the rate of 31.2 gpm (L/min) at _____ psi (bars) at the base of the riser.

Hose stream allowance of _____ gpm (L/min) is included in the above.

Occupancy classification: 1B LIGHT HAZARD

Commodity classification: N/A

Maximum storage height: N/A

Safety factor: 1.0

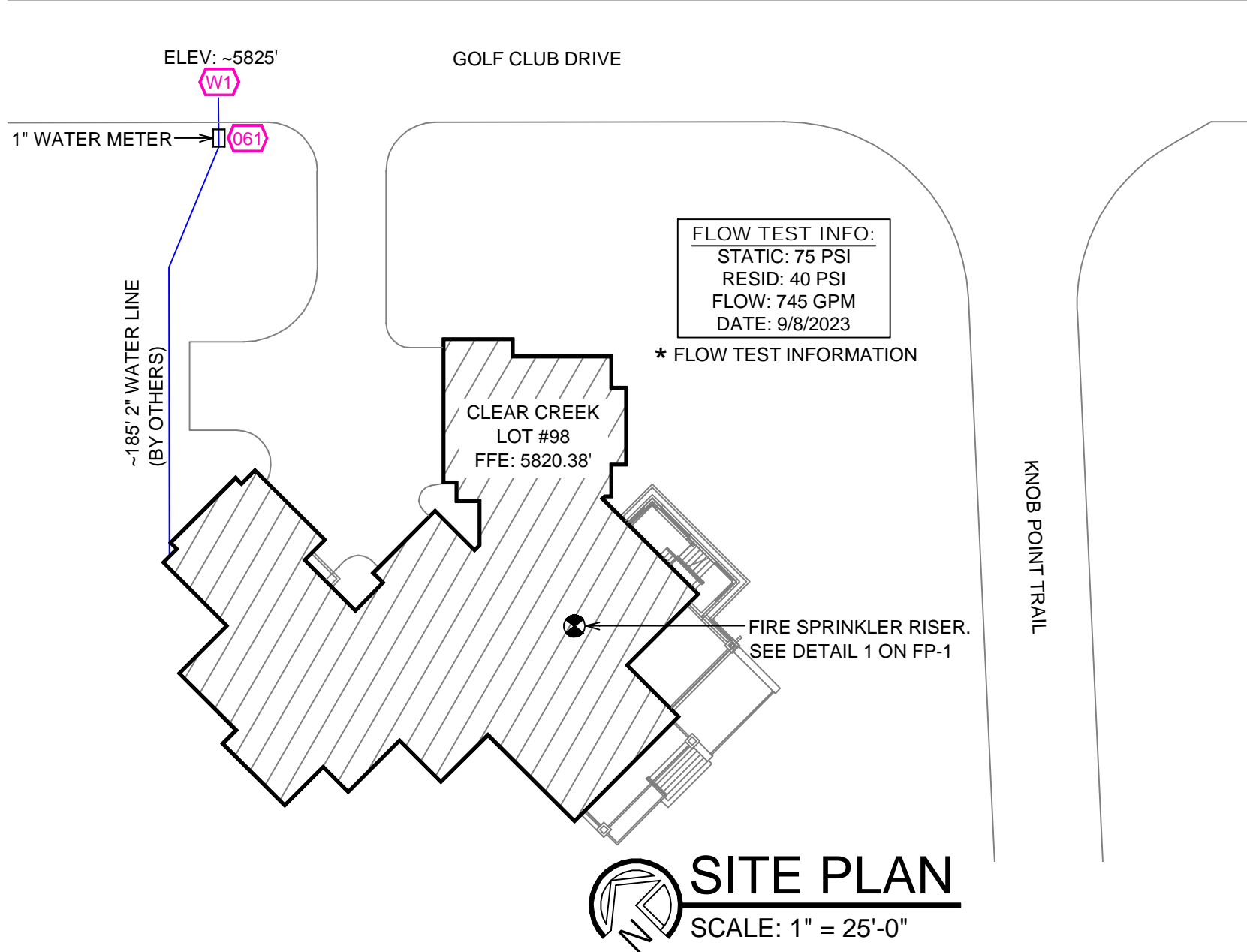
PIPE VOLUMES:
(CPVC)

TOTAL PIPE FOOTAGE AND CAPACITY:
1" = 530' (26.21 GAL)
1 1/2" = 22' (1.74 GAL)

ADD 10% FOR DROPS AND PIPE SIZE DISCREPANCIES
TOTAL VOLUME: ±30.75 GALLONS

NFPA 13 - Table A.7.2.3 Capacity of 1 ft of pipe (Based on Actual Internal Pipe Diameter)

| Nominal Pipe Diameter (in.) | Schedule 40 (gal) | Schedule 10 (gal) | CPVC (gal) |
|-----------------------------|-------------------|-------------------|------------|
| 1 | 0.045 | 0.049 | 0.049 |
| 1 1/4 | 0.078 | 0.085 | 0.079 |
| 1 1/2 | 0.106 | 0.115 | 0.104 |
| 2 | 0.174 | 0.190 | |
| 2 1/2 | 0.248 | 0.283 | |



SITE PLAN
SCALE: 1" = 25'-0"

| NO. | DATE | REVISIONS | DRAWN | CHECKED |
|-----|------|-----------|-------|---------|
| | | | | |

GENERAL CONTRACTOR: CARSON CITY FIRE DEPT
ADDRESS: 777 SOUTH STEWART ST
CITY: CARSON CITY, NV 89701
PHONE: 775-887-2210
CONTACT: CONTACT:

ARCHITECT: FIELD INSPECTIONS:
ADDRESS: 2.
CITY: 3.
PHONE: 4.

FIRE SPRINKLER NOTES:

- THE PROPOSED FIRE SPRINKLER SYSTEM IS AN ANTI-FREEZE SYSTEM AND SHALL BE DESIGNED AND INSTALLED IN ACCORDANCE WITH NFPA 13D.
- THIS SPRINKLER SYSTEM IS HYDRAULICALLY CALCULATED IN ACCORDANCE WITH NFPA 13D TO PROVIDE 0.05 GPM PER SQ. FT. OVER THE MOST REMOTE AREA.
- THE NUMBER OF DESIGN SPRINKLERS SHALL INCLUDE ALL SPRINKLERS WITHIN A COMPARTMENT UP TO A MAXIMUM OF 2 SPRINKLERS.
- ALL SPRINKLER PIPING CONCEALED ABOVE CEILINGS SHALL BE CPVC PIPING UNLESS OTHERWISE NOTED.
- ALL DIMENSIONS SHOWN ARE CENTER TO CENTER U.O.N.
- ALL HANGERS SHALL BE INSTALLED IN ACCORDANCE WITH NFPA 13D AND/OR NFPA 13 REQUIREMENTS.
- HOLES THROUGH SOLID STRUCTURAL MEMBERS SHALL BE PERMITTED TO SERVE AS HANGERS FOR THE SUPPORT OF SYSTEM PIPING.
- ALL SYSTEM PIPING SHALL BE TESTED FOR LEAKAGE AT NORMAL SYSTEM OPERATING PRESSURE.
- THE OWNER SHALL BE RESPONSIBLE FOR MAINTAINING A MINIMUM TEMPERATURE OF 40° FAHRENHEIT TO PROTECT FROM FREEZING. THE SECTIONS OF THE SPRINKLER SYSTEM WHERE THERE IS NO ANTI-FREEZE IN THE PIPING (UPSTREAM OF THE RISER).

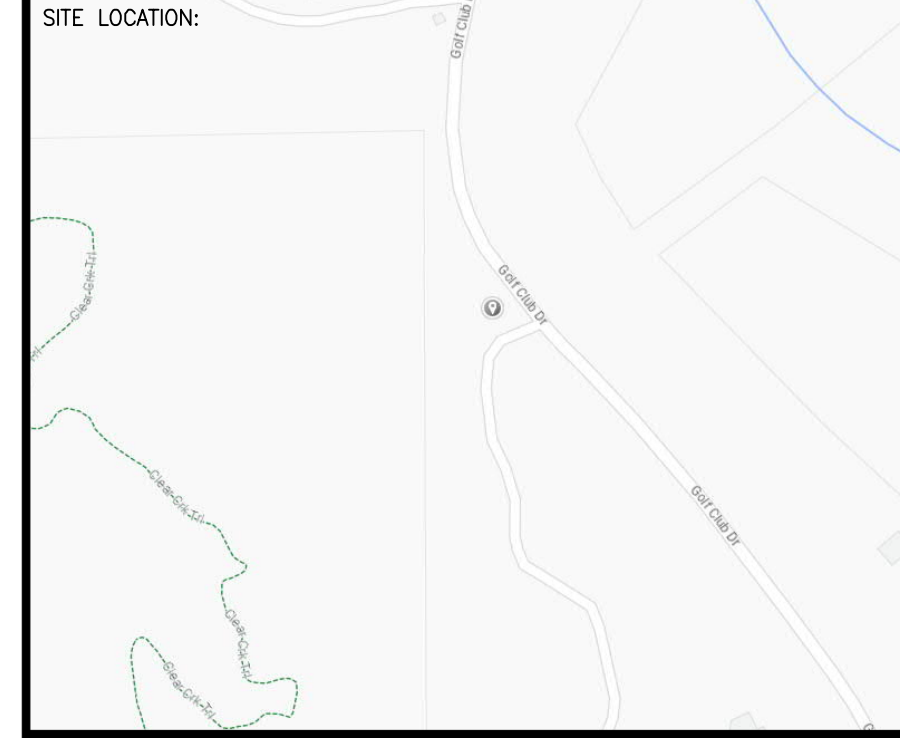
SPRINKLER HEAD LEGEND

| SYM | QTY | PIPE | MFG. | MODEL# | NPT | K | TEMP | FINISH | S.I.N. |
|-----|-----|-------------|-------|--------|------|-----|------|--------|--------|
| ⊗ | 46 | CONCEALED | SEN/J | RC-RES | 1/2" | 4.9 | 162 | WHITE | SS4644 |
| ⊗ | 3 | CONCEALED | SEN/J | RC-RES | 1/2" | 4.9 | 205 | WHITE | SS4644 |
| ⊗ | 9 | SEMI-RECESS | SEN/J | FR-RES | 1/2" | 4.9 | 205 | WHITE | SS4451 |

58 TOTAL SPRINKLERS ON THIS SHEET

FIRE SPRINKLER SYMBOLS

- ⊗ AUTOMATIC SPRINKLER RISER +13" ELEV. BELOW DECK OR TOS
- ⊕ EARTHQUAKE BRACING +12'-9" ELEV. ABOVE FINISHED FLOOR
- 2-WAY & 4-WAY → CHANGE ELEVATION UP
- PIPE HANGER & TYPE DESIGNATION → CHANGE ELEVATION DN
- HYDRAULIC REF PT → INSPECTORS TEST
- GRID OR THRD CAP → AUX DRAIN
- GRID COUPLING → REVISION NOTATION
- ⊕ TYPICAL POINT OF CONNECTION (POC) → LOCAL ALARM



PROJECT NAME: FIRE SPRINKLER PLANS FOR
CLEAR CREEK LOT #98
3363 GOLF CLUB DRIVE
CARSON CITY, NV 89706

STAMP:

DRAWING TITLE: **FIRE SPRINKLER PLAN**

SCALE: 1/8" = 1'-0" JOB NO.:
DRAWN BY: DWG NO.:
BORN ON DATE: 11/29/2023 FILE: **FP-1**
SHEET 1 OF 1