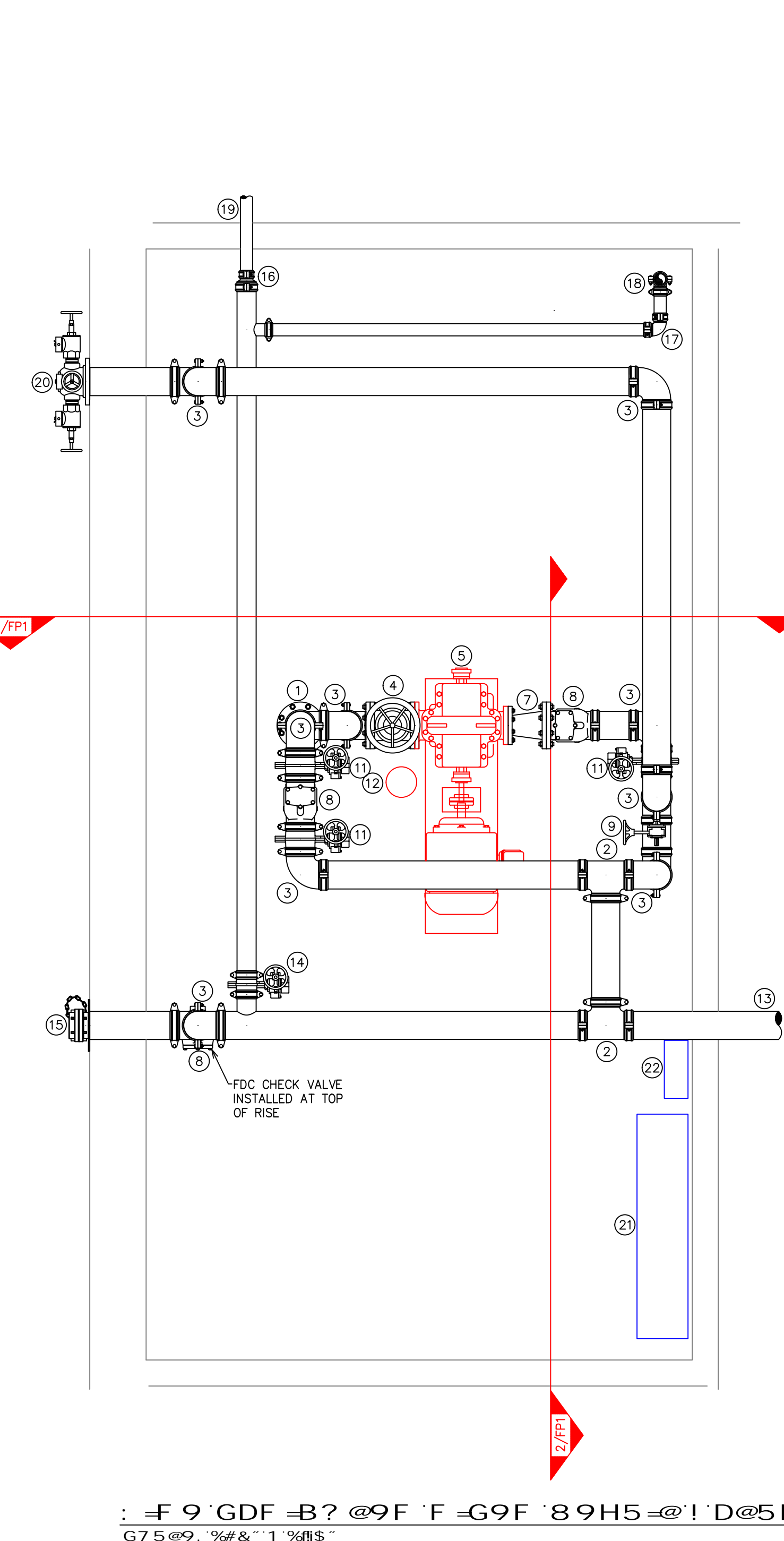
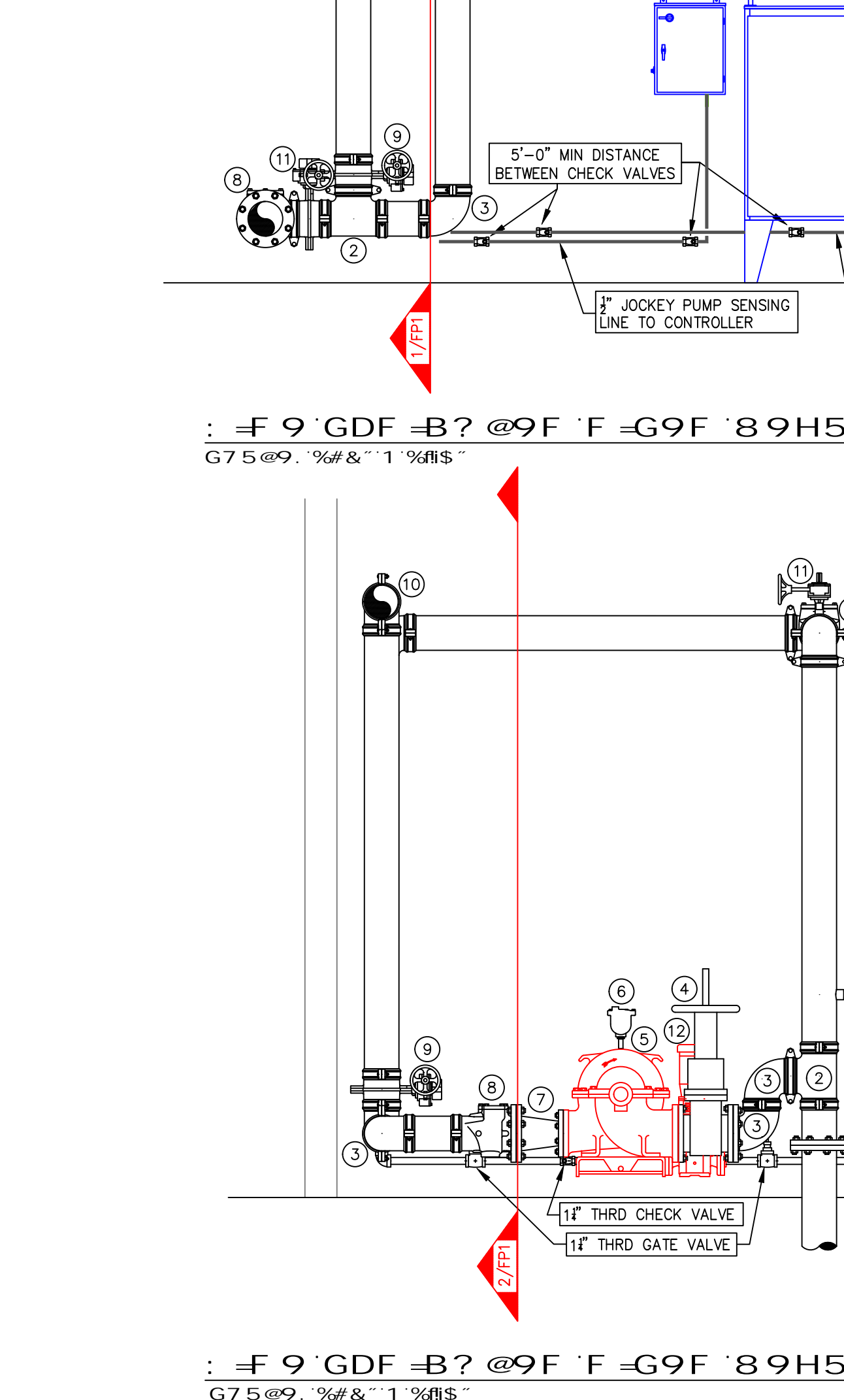
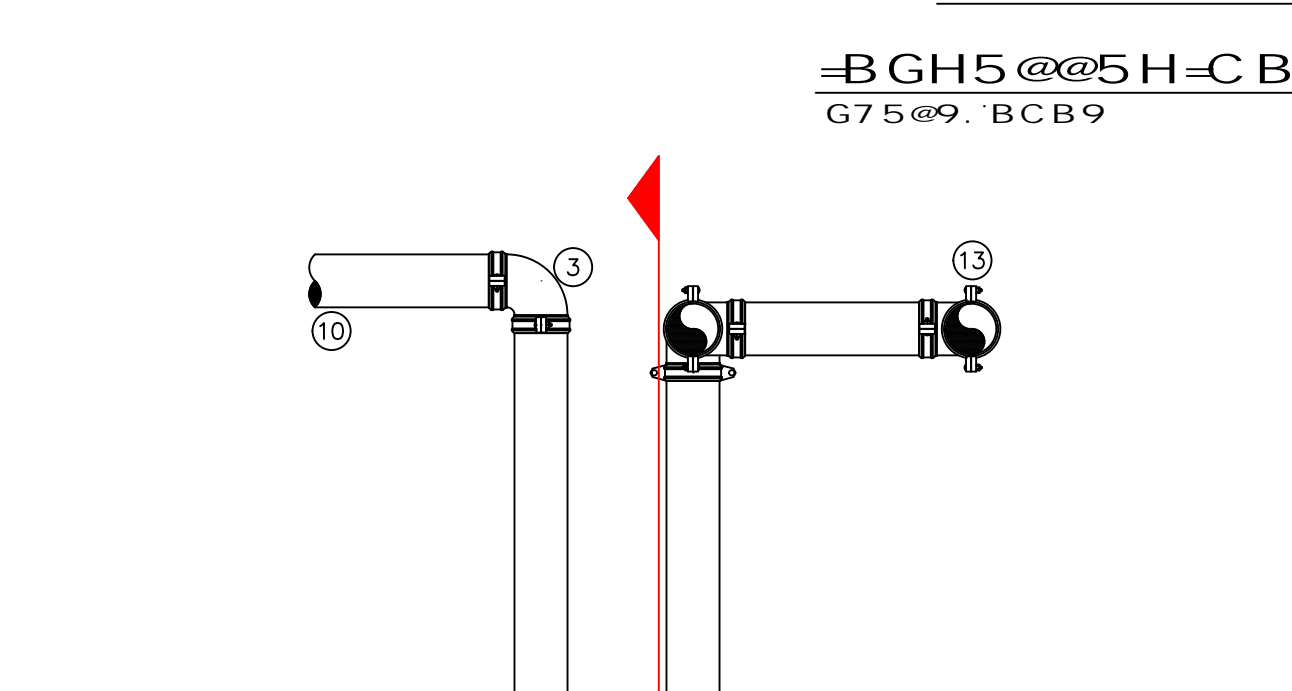
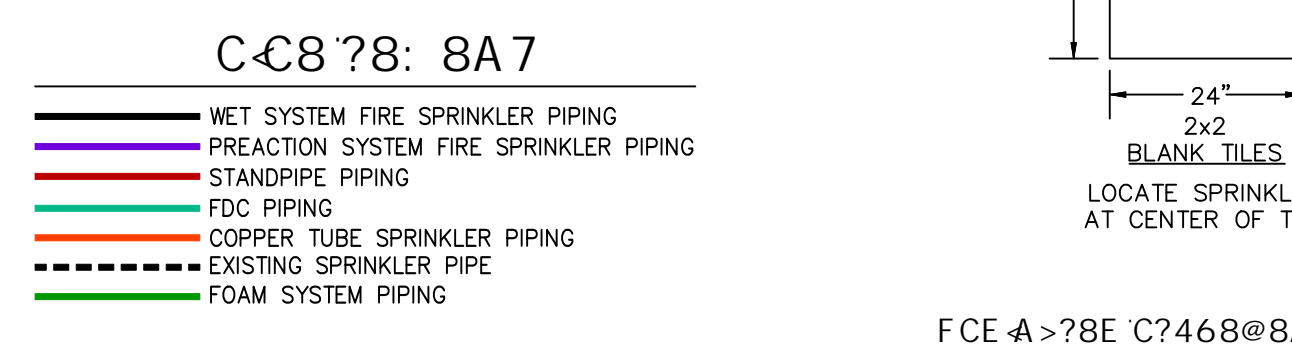


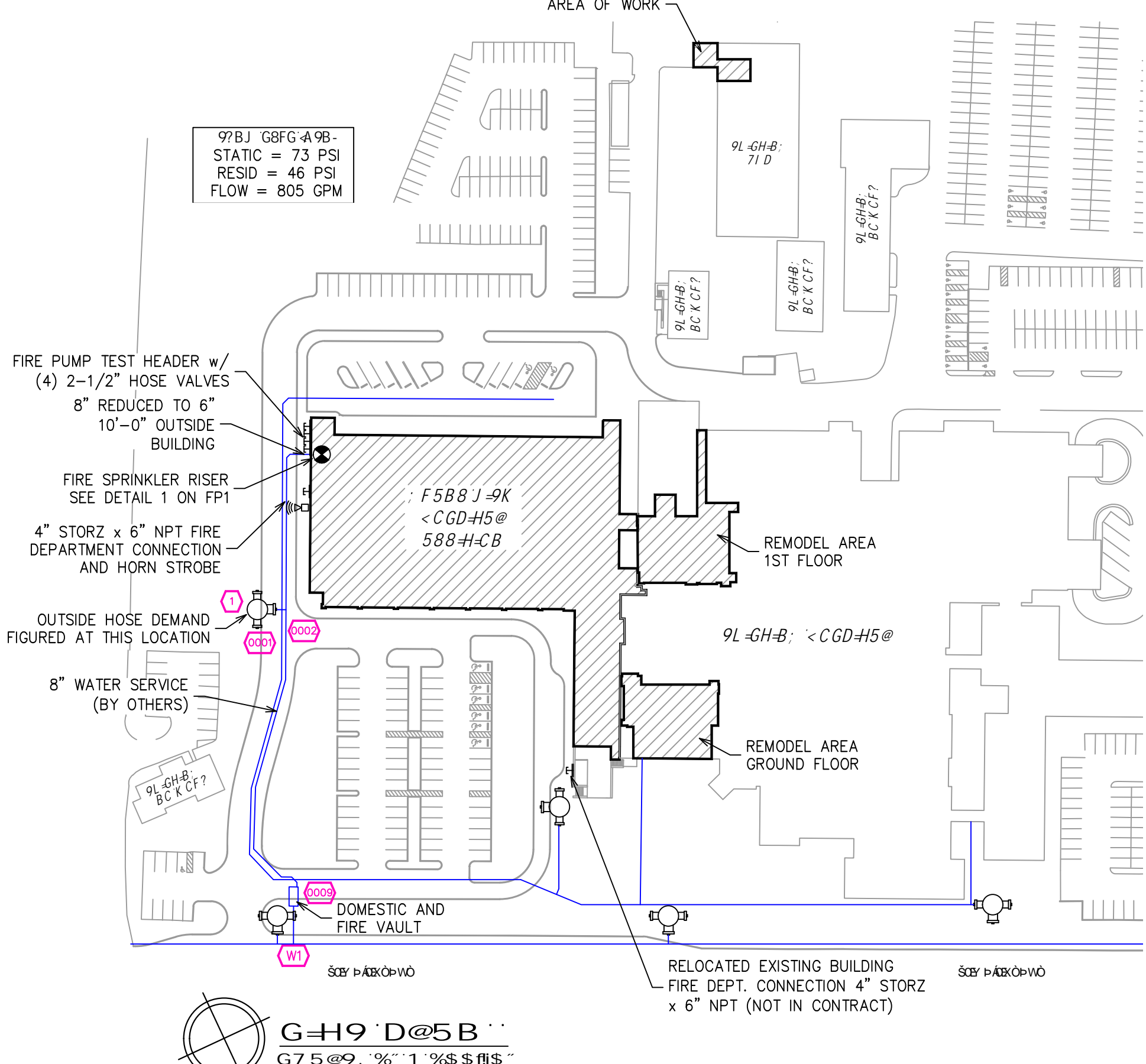
61 @ 8-B: G97H-CB 115"  
G7 5 @ 9: 1/8" & 1/4" SRS

STEEL PIPE EXCEPT THREADED LIGHTWALL	MAXIMUM DISTANCE BETWEEN HANGERS (FT.-IN.)							
	3/4"	1"	1 1/2"	2"	2 1/2"	3"	4"	6"
	12-0	12-0	15-0	15-0	15-0	15-0	15-0	15-0

A9C4 S&: 4A: 8E FC46-A:



- RISER LEGEND**
- 6" UNDERGROUND WATER SERVICE (BY OTHERS)
  - FLUSHING & TESTING OF THE UNDERGROUND SHALL BE COMPLETED PRIOR TO THE SPRINKLER SYSTEM WOODUP. UNDERGROUND PIPING IS TO BE SUPPLIED TO THE "99" CONTRACTOR BY THE G.C.
  - 6" GROOVED TEE
  - 6" GROOVED 90 ELBOW
  - 750gpm @ 80psi FIRE PUMP
  - AIR RELEASE VALVE
  - 5" x 6" CONCENTRIC DISCHARGE INCREASER
  - 6" GROOVED CHECK VALVE
  - 6" GROOVED BUTTERFLY VALVE (NORMALLY CLOSED)
  - 6" TO FIRE PUMP TEST HEADER
  - 6" GROOVED BUTTERFLY VALVE (NORMALLY OPEN)
  - JOCKEY PUMP
  - 6" TO STANDPIPE SYSTEM
  - 4" GROOVED STANDPIPE CONTROL VALVE
  - 4" STORZ x 6" NPT FIRE DEPT CONNECTION
  - 2" UP TO HOSE VALVE
  - 2" TO MAIN FLOOR HOSE VALVE
  - FIRE PUMP TEST HEADER
  - FIRE PUMP CONTROLLER / TRANSFER SWITCH
  - JOCKEY PUMP CONTROLLER



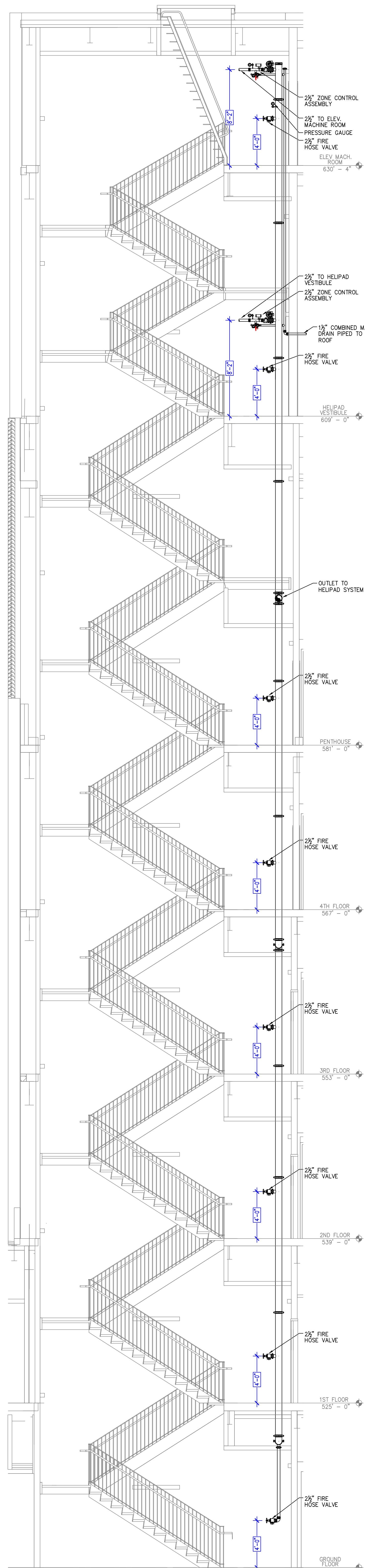
PA Dept. of Health  
ID #071001-08  
Dwg. Index # H-21-0037  
Revision to: H-20-0994

GRAPHIC SCALE - 1/8" = 1'-0"

REV.	DATE	DESCRIPTION
1	21-03/16/22	1
2	21-03/16/22	2

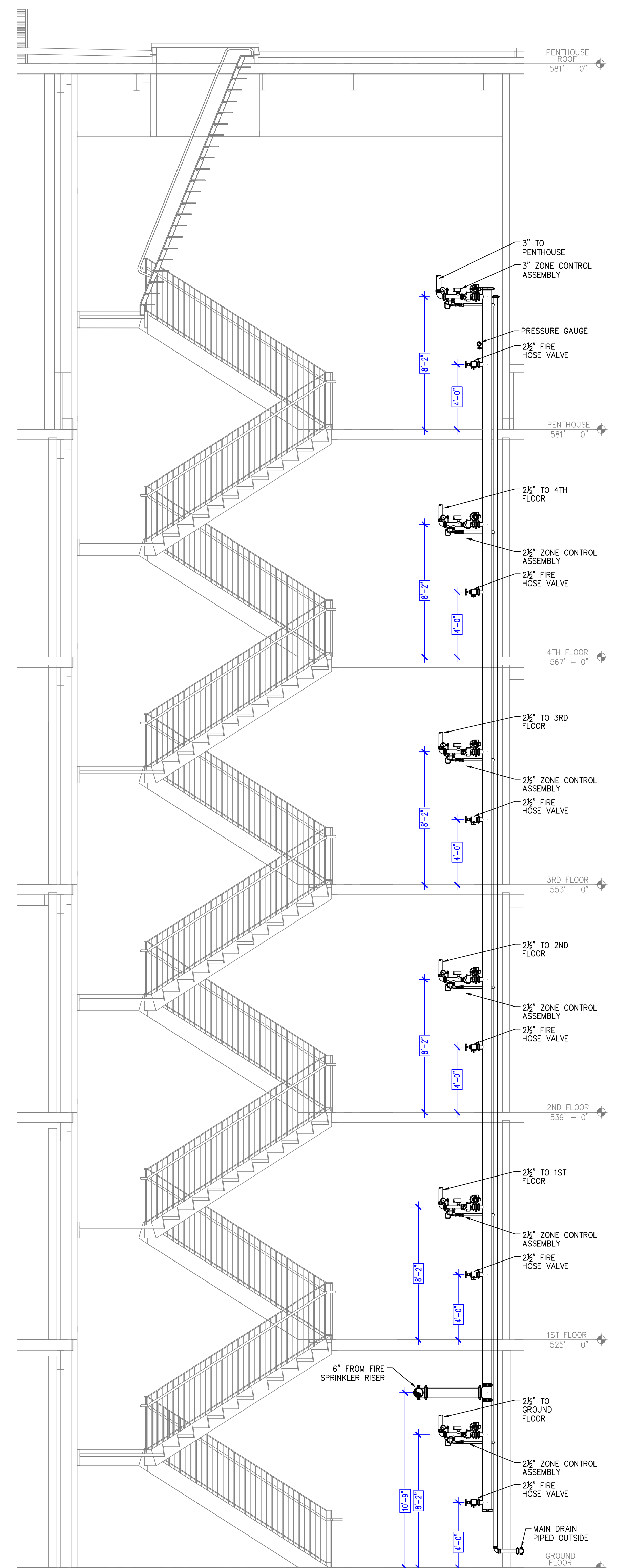
OWNER TO SUPPLY ADEQUATE HEAT IN ALL AREAS WHERE SPRINKLER PIPING MAY FREEZE.

NO.	DATE	DESCRIPTION
1	21-03/16/22	1
2	21-03/16/22	2
3	21-03/16/22	3
4	21-03/16/22	4
5	21-03/16/22	5
6	21-03/16/22	6
7	21-03/16/22	7
8	21-03/16/22	8
9	21-03/16/22	9
10	21-03/16/22	10
11	21-03/16/22	11
12	21-03/16/22	12
13	21-03/16/22	13
14	21-03/16/22	14
15	21-03/16/22	15
16	21-03/16/22	16
17	21-03/16/22	17
18	21-03/16/22	18
19	21-03/16/22	19
20	21-03/16/22	20
21	21-03/16/22	21
22	21-03/16/22	22
23	21-03/16/22	23
24	21-03/16/22	24
25	21-03/16/22	25
26	21-03/16/22	26
27	21-03/16/22	27
28	21-03/16/22	28
29	21-03/16/22	29
30	21-03/16/22	30
31	21-03/16/22	31
32	21-03/16/22	32
33	21-03/16/22	33
34	21-03/16/22	34
35	21-03/16/22	35
36	21-03/16/22	36
37	21-03/16/22	37
38	21-03/16/22	38
39	21-03/16/22	39
40	21-03/16/22	40
41	21-03/16/22	41
42	21-03/16/22	42
43	21-03/16/22	43
44	21-03/16/22	44
45	21-03/16/22	45
46	21-03/16/22	46
47	21-03/16/22	47
48	21-03/16/22	48
49	21-03/16/22	49
50	21-03/16/22	50
51	21-03/16/22	51
52	21-03/16/22	52
53	21-03/16/22	53
54	21-03/16/22	54
55	21-03/16/22	55
56	21-03/16/22	56
57	21-03/16/22	57
58	21-03/16/22	58
59	21-03/16/22	59
60	21-03/16/22	60
61	21-03/16/22	61
62	21-03/16/22	62
63	21-03/16/22	63
64	21-03/16/22	64
65	21-03/16/22	65
66	21-03/16/22	66
67	21-03/16/22	67
68	21-03/16/22	68
69	21-03/16/22	69
70	21-03/16/22	70
71	21-03/16/22	71
72	21-03/16/22	72
73	21-03/16/22	73
74	21-03/16/22	74
75	21-03/16/22	75
76	21-03/16/22	76
77	21-03/16/22	77
78	21-03/16/22	78
79	21-03/16/22	79
80	21-03/16/22	80
81	21-03/16/22	81
82	21-03/16/22	82
83	21-03/16/22	83
84	21-03/16/22	84
85	21-03/16/22	85
86	21-03/16/22	86
87	21-03/16/22	87
88	21-03/16/22	88
89	21-03/16/22	89
90	21-03/16/22	90
91	21-03/16/22	91
92	21-03/16/22	92
93	21-03/16/22	93
94	21-03/16/22	94
95	21-03/16/22	95
96	21-03/16/22	96
97	21-03/16/22	97
98	21-03/16/22	98
99	21-03/16/22	99
100	21-03/16/22	100



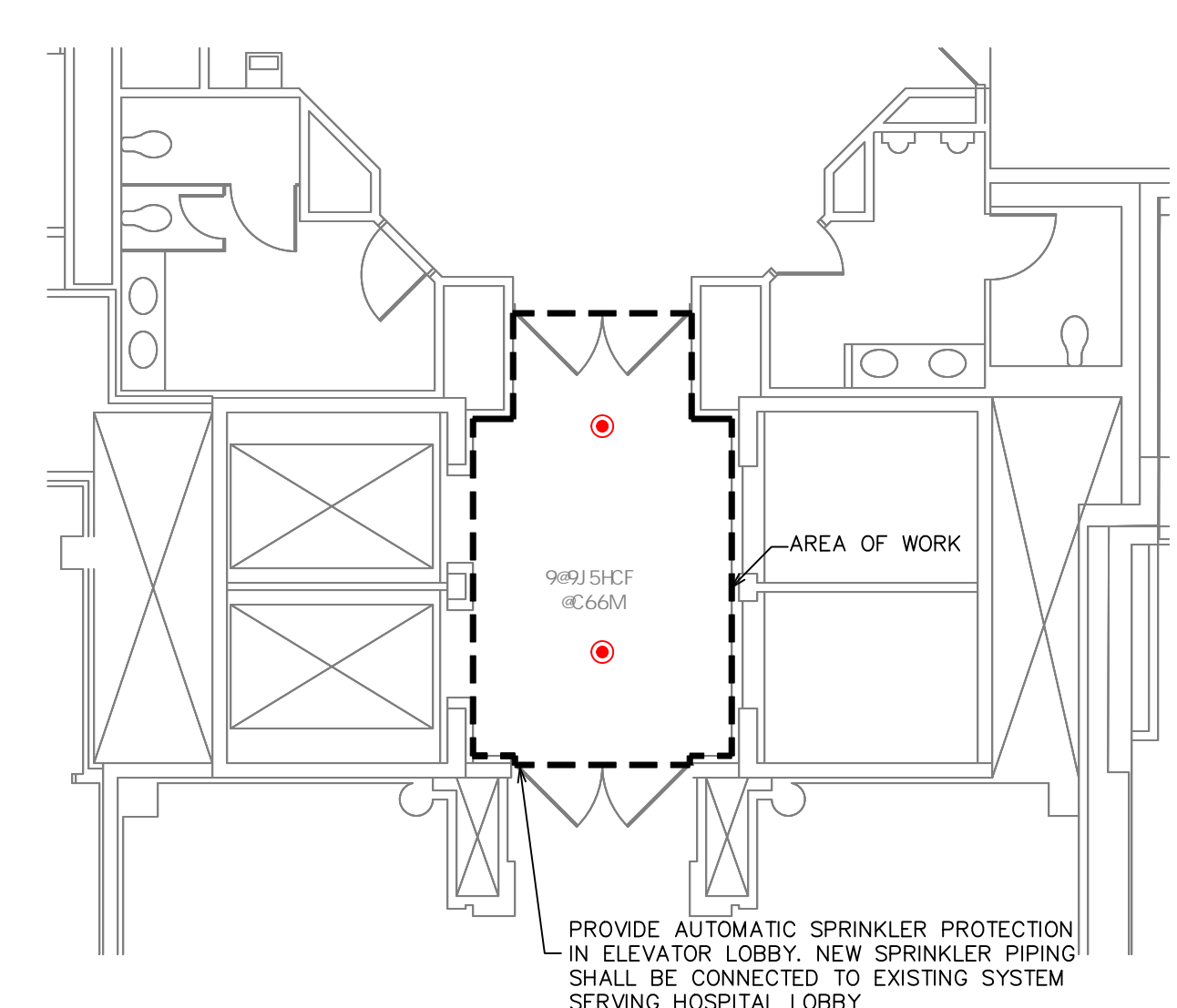
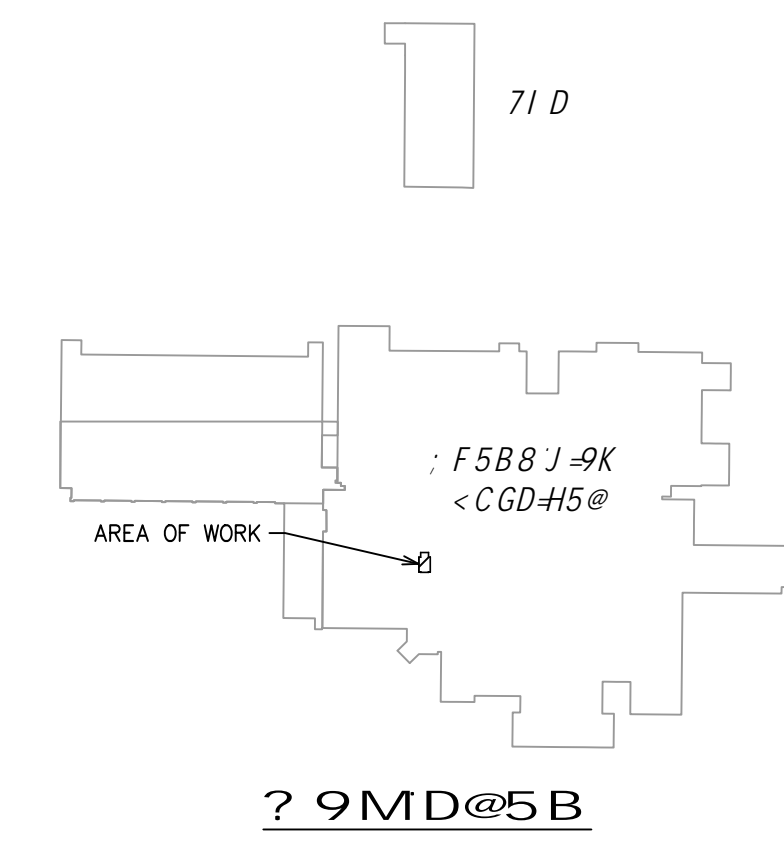
**C-C878: 8A7**

- WET SYSTEM FIRE SPRINKLER PIPING
- PREACTION SYSTEM FIRE SPRINKLER PIPING
- STANDPIPE PIPING
- FDC PIPING
- COPPER TUBE SPRINKLER PIPING
- EXISTING SPRINKLER PIPE
- FOAM SYSTEM PIPING

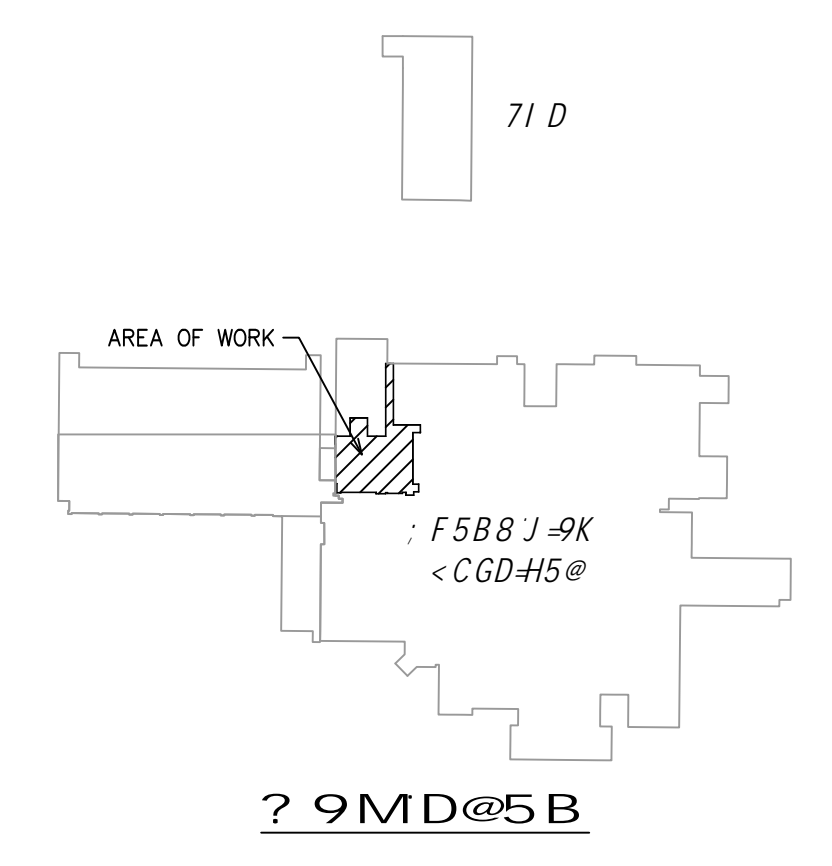
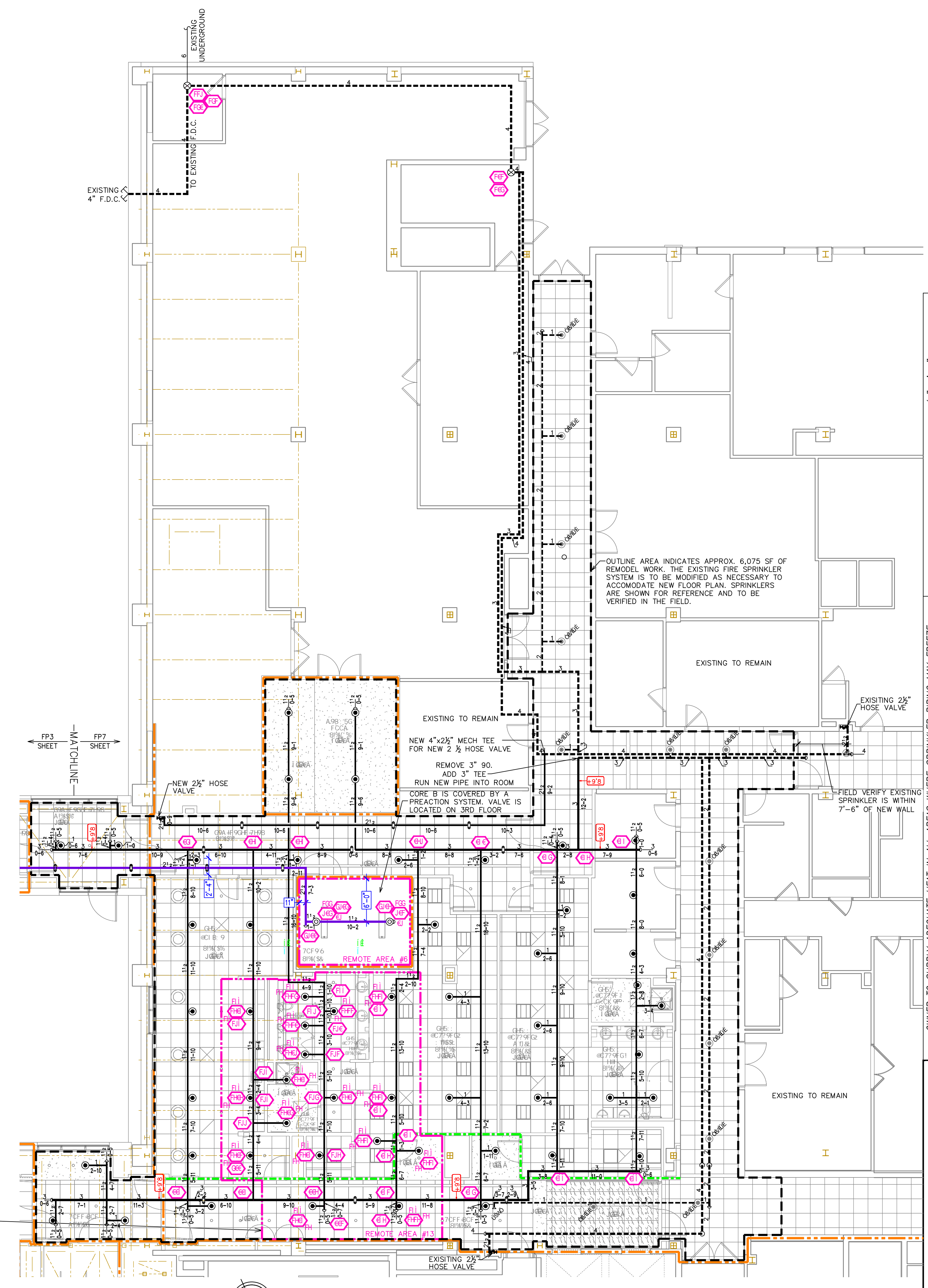


**G5-F-G97H-CB-%**  
G7 5'09" 3/4" (-1) 1/8" BS

**G5-F-G97H-CB &**  
G7 5'09" 3/4" (-1) 1/8" BS



**F 9 GDF-B? @9F D@5B 1' : F GH : @CCF 1'5F 95' 8**  
G7 5'09" 3/4" (-1) 1/8" BS



**? 9MD@5B**

Design Area #13 HAZARDOUS LIQUID  
Zone-1 System Type WET  
Location: EXIST. BLDG. 1ST FLR.

Flowing Outlets: 17  
Density: 0.10 Remote Area: 1005  
Risk @ 80R  
Flow 261.5 gpm @ 45.3 psi  
Calculation Safety: 11.3 psi  
Includes 100 gpm Hose Allowance

NOTE: 1500 S.F. REMOTE AREA REDUCED BY 40% TO 900 S.F. PER NFPA 13, SEC 11.2.3.2.1 DUE TO THE USE OF QUICK RESPONSE SPRINKLERS AND A 9'-0" DECK HEIGHT.

**F 9 GDF-B? @9F D@5B 1' : F GH : @CCF 1'5F 95' 7**  
G7 5'09" 3/4" (-1) 1/8" BS

PA Dept. of Health  
ID #07100-08  
Dwg. Index # H-21-0037  
Revision to: H-20-0994

GRAPHIC SCALE = 1/8" = 1'-0"

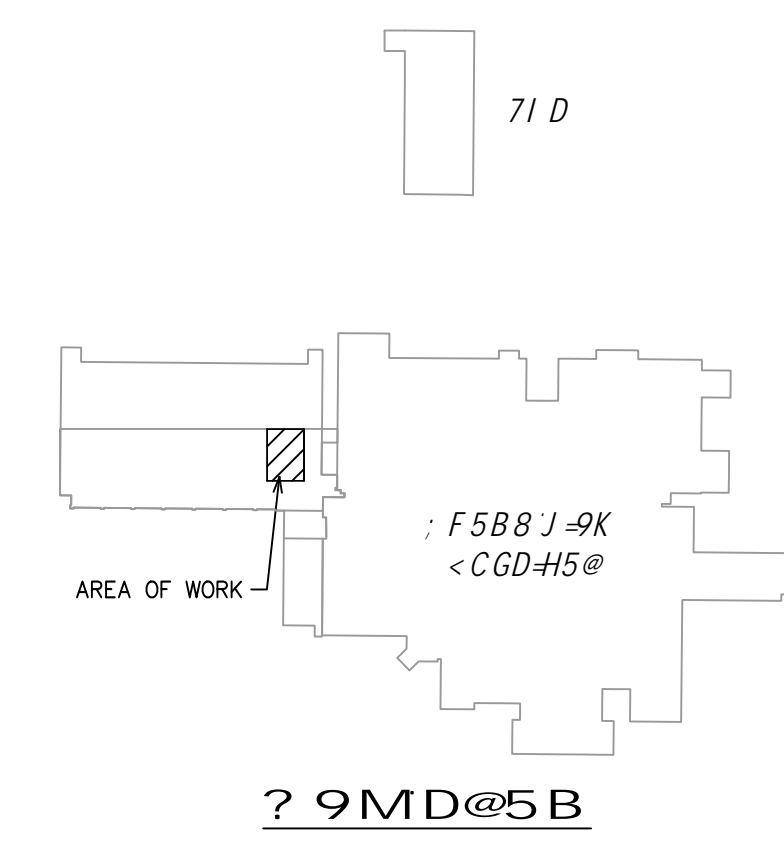
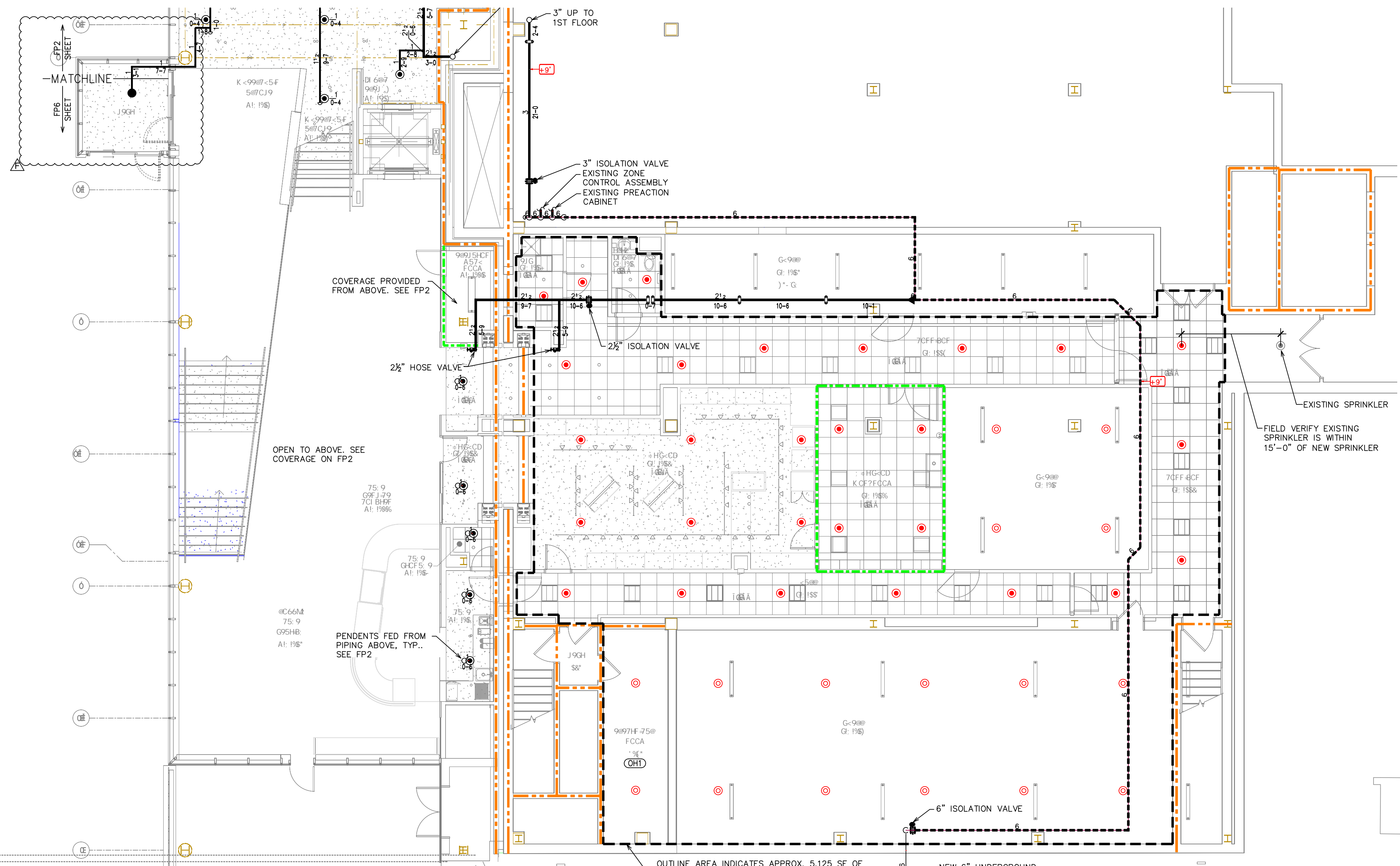
NO.	DATE	DESCRIPTION
1	3/18/21	Added Helped Coverage Per Scope Change
2	3/18/21	Added Vestibule Coverage Per Revisions
3	12/8/21	Removed Elevator Coverage Per Revisions

OWNER TO SUPPLY ADEQUATE HEAT IN ALL AREAS WHERE SPRINKLER PIPING MAY FREEZE.

NO.	DATE	DESCRIPTION	TYPE	STATUS
1	3/18/21	MANUF	MANUF	MANUF
2	3/18/21	MANUF	MANUF	MANUF
3	3/18/21	MANUF	MANUF	MANUF
4	3/18/21	MANUF	MANUF	MANUF
5	3/18/21	MANUF	MANUF	MANUF
6	3/18/21	MANUF	MANUF	MANUF
7	3/18/21	MANUF	MANUF	MANUF
8	3/18/21	MANUF	MANUF	MANUF
9	3/18/21	MANUF	MANUF	MANUF
10	3/18/21	MANUF	MANUF	MANUF
11	3/18/21	MANUF	MANUF	MANUF
12	3/18/21	MANUF	MANUF	MANUF
13	3/18/21	MANUF	MANUF	MANUF
14	3/18/21	MANUF	MANUF	MANUF
15	3/18/21	MANUF	MANUF	MANUF
16	3/18/21	MANUF	MANUF	MANUF
17	3/18/21	MANUF	MANUF	MANUF
18	3/18/21	MANUF	MANUF	MANUF
19	3/18/21	MANUF	MANUF	MANUF
20	3/18/21	MANUF	MANUF	MANUF

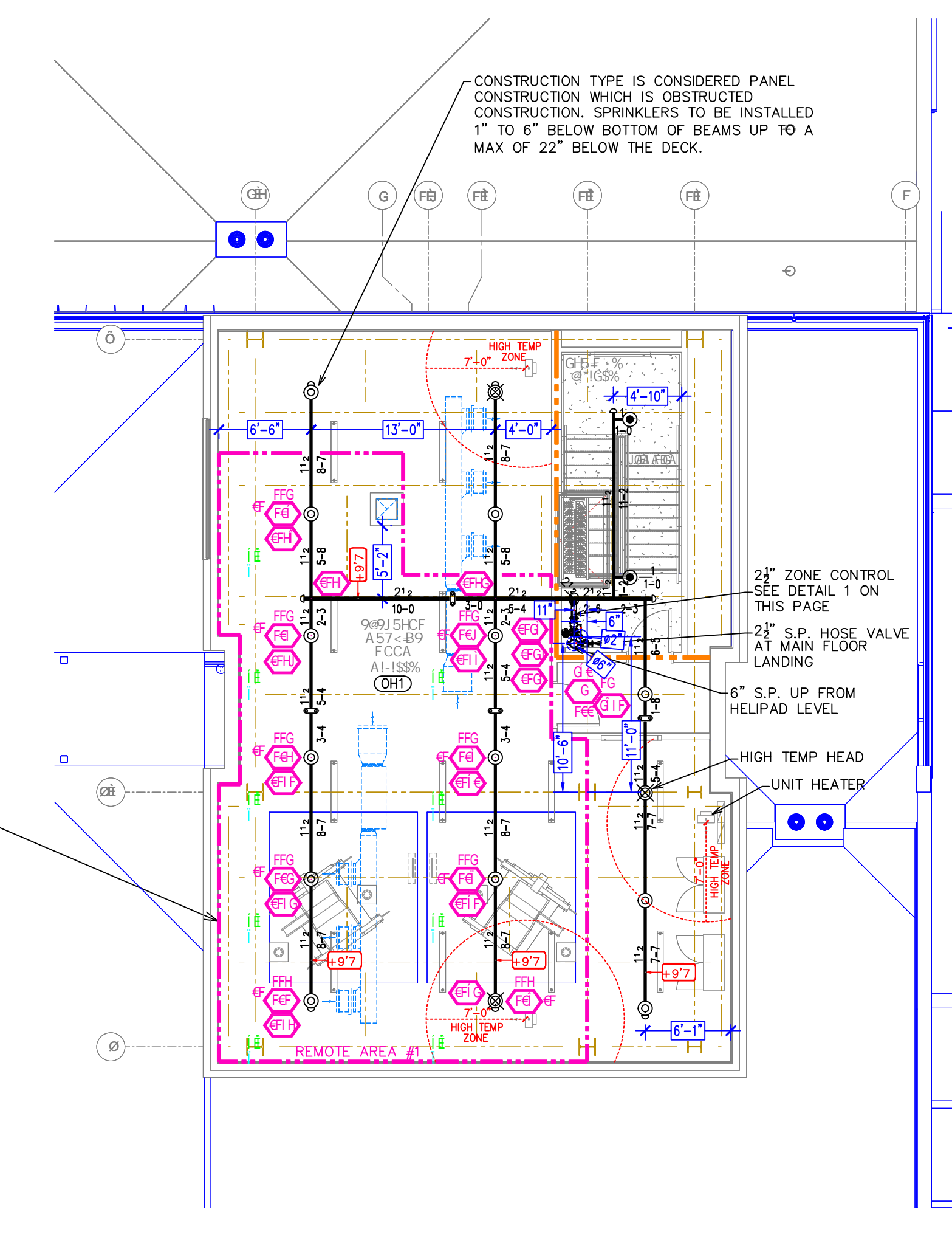
SPRINKLER LEGEND (FAM TOTAL)

NO.	DATE	DESCRIPTION	TYPE	STATUS
1	3/18/21	MANUF	MANUF	MANUF
2	3/18/21	MANUF	MANUF	MANUF
3	3/18/21	MANUF	MANUF	MANUF
4	3/18/21	MANUF	MANUF	MANUF
5	3/18/21	MANUF	MANUF	MANUF
6	3/18/21	MANUF	MANUF	MANUF
7	3/18/21	MANUF	MANUF	MANUF
8	3/18/21	MANUF	MANUF	MANUF
9	3/18/21	MANUF	MANUF	MANUF
10	3/18/21	MANUF	MANUF	MANUF
11	3/18/21	MANUF	MANUF	MANUF
12	3/18/21	MANUF	MANUF	MANUF
13	3/18/21	MANUF	MANUF	MANUF
14	3/18/21	MANUF	MANUF	MANUF
15	3/18/21	MANUF	MANUF	MANUF
16	3/18/21	MANUF	MANUF	MANUF
17	3/18/21	MANUF	MANUF	MANUF
18	3/18/21	MANUF	MANUF	MANUF
19	3/18/21	MANUF	MANUF	MANUF
20	3/18/21	MANUF	MANUF	MANUF



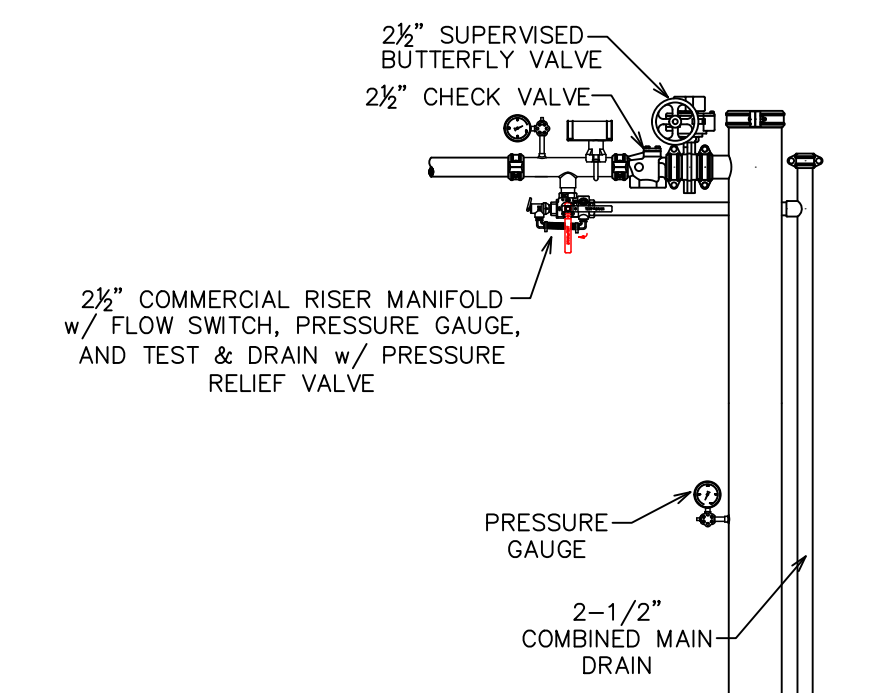
**Design Area #01 HAZARD-041**  
 Zone-B System Type WET  
 Location: ELEVATOR MACHINE ROOM  
 Flowing Outlets: 9 Remote Area: 963  
 Req'd @ BOR  
 Flow: 159.2 gpm @ 17.7 psi  
 Calculation Safety: 77.3 psi  
 Includes 250 gpm hose allowance

NOTE:  
 1500 S.F. REMOTE AREA REDUCED BY 40% TO 900 S.F. PER NFPA 13, SEC. 11.2.3.2.3.1 DUE TO THE USE OF QUICK RESPONSE SPRINKLERS AND A 10'-0" DECK HEIGHT.



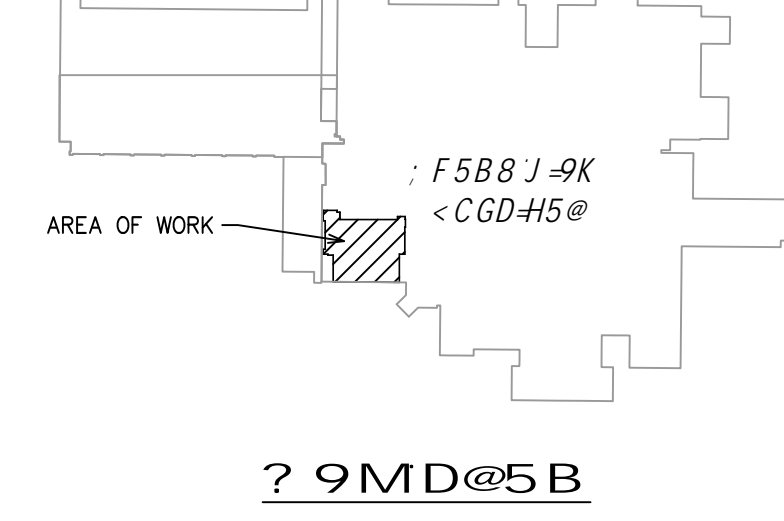
**Design Area #12**  
 Zone: STANDPIPE  
 Location: ELEVATOR MACHINE ROOM  
 Flowing Valves: 4  
 Min Required Pressure: 100 psi  
 Min Required Flow per Valve: 250 gpm  
 Demand: 1000 gpm @ 181.3 psi

NOTE:  
 CLASS 1 MANUAL WET STANDPIPE CALCULATED BY ACCORDANCE WITH NFPA 14, HYDRAULIC CALCULATION BASED ON PROVIDING 100 PSI AT THE TOPMOST HOSE CONNECTION AND THEN 500 GPM THROUGH THE TWO MOST REMOTE CONNECTIONS AND 250 GPM FOR EACH ADDITIONAL STANDPIPE.



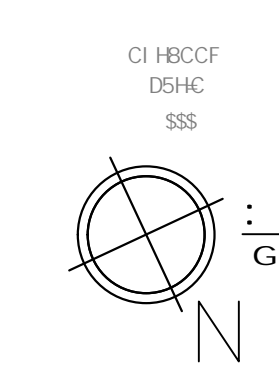
NCB97CBHFC@89H5@&&  
 G75@9' .96# & "1'98#S"

**C-C8 78: 8A7**  
 WET SYSTEM FIRE SPRINKLER PIPING  
 PREACTION SYSTEM FIRE SPRINKLER PIPING  
 STANDPIPE PIPING  
 FDC PIPING  
 COPPER TUBE SPRINKLER PIPING  
 EXISTING SPRINKLER PIPE  
 FOAM SYSTEM PIPING

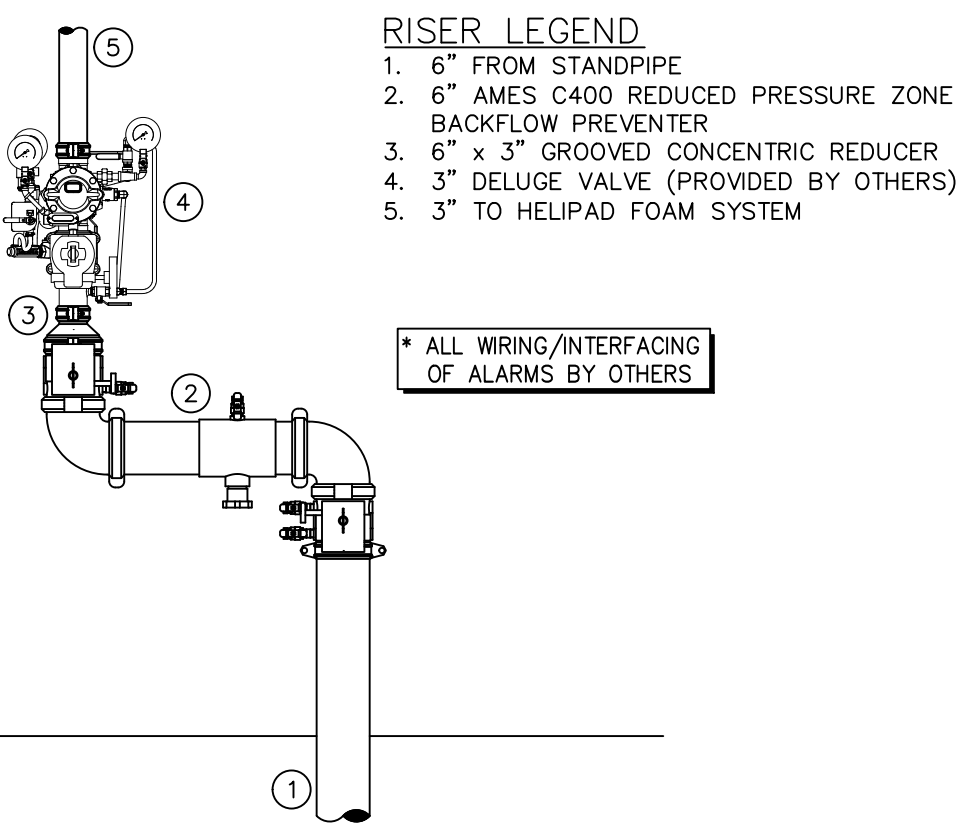
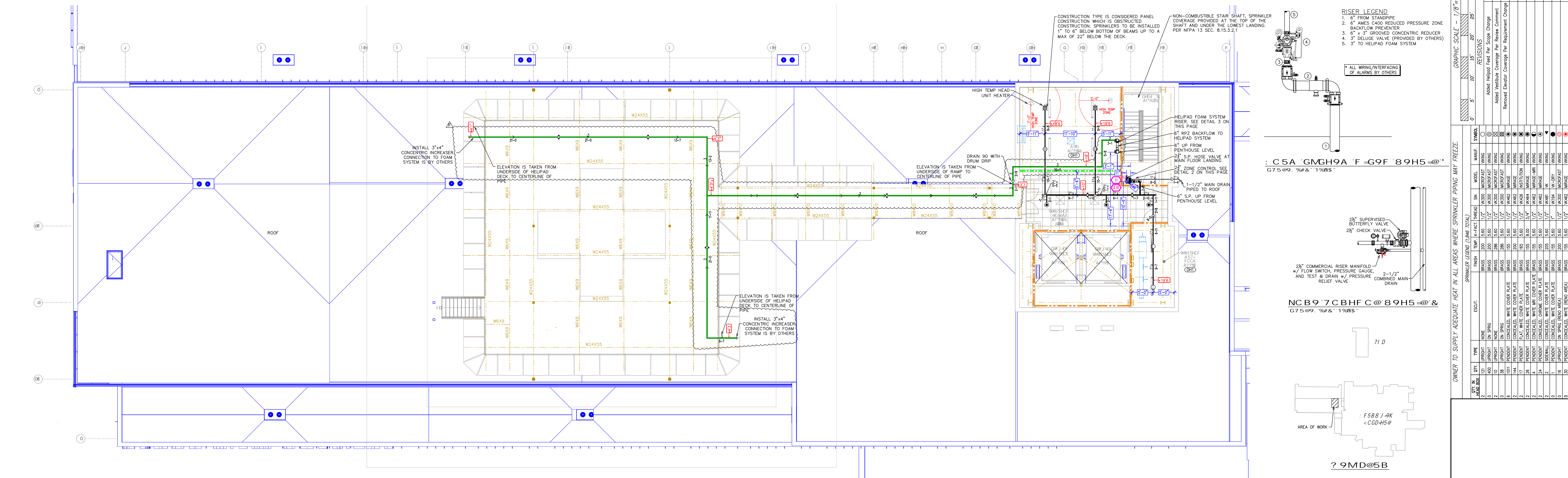
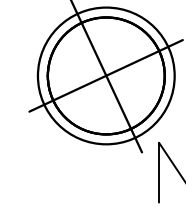


**F 9 GDF =B? @9F D@5B I' FCI B8' : @CCF I'5F 95'6#8**  
 G75@9' .96# & "1'98#S"

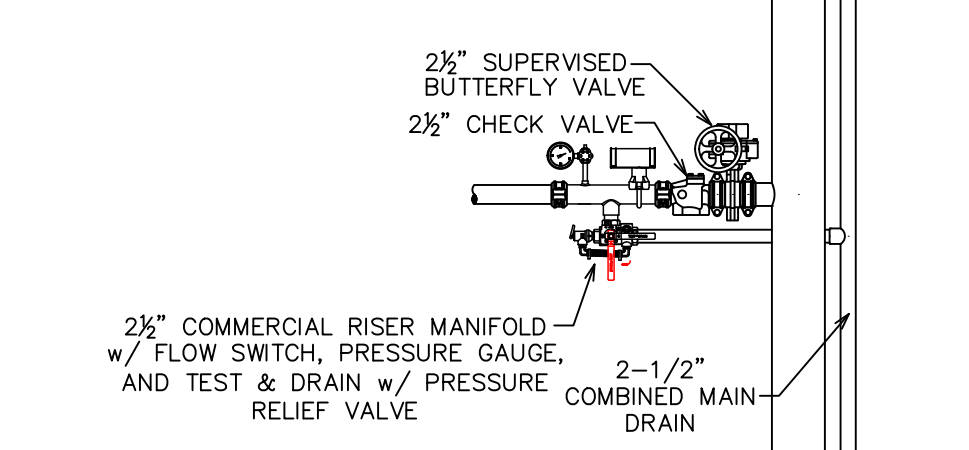
EXPECTED LOCATION OF RELOCATED EXISTING BUILDING FIRE DEPT. CONN. BASED ON ARCH. BULLETIN #14. FDC TO BE FLUSH MOUNTED AT STORZ x 6" NPT, ON SIDE OF RETAINING WALL. ANCHOR FIRE PROTECTION HAS NO WORK RELATED TO THIS FDC IN ITS ORIGINAL CONTRACT. IT IS BEING SHOWN ON THESE PLANS FOR INFORMATIONAL PURPOSES ONLY.



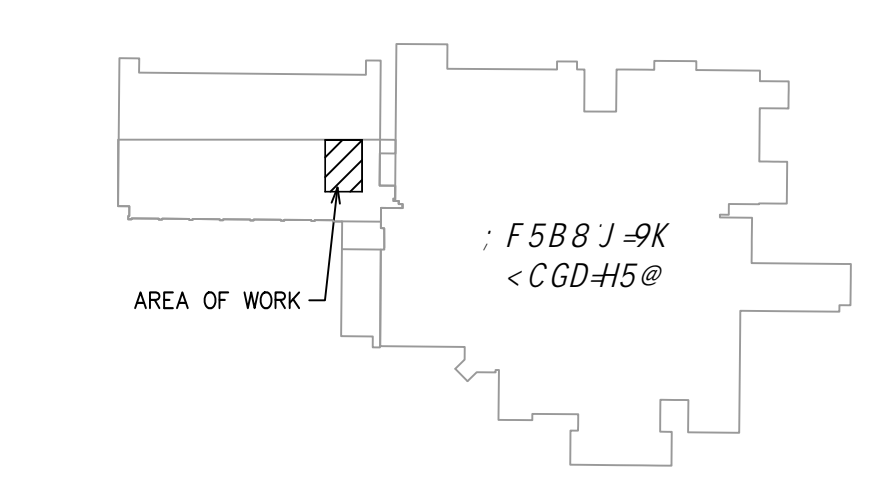
**F 9 GDF =B? @9F D@5B I' 9@9J "A 57< =B9' FCCA I'5F 95'5**  
 G75@9' .96# & "1'98#S"



NCB97CBHFC@89H5@&&  
 G75@9' .96# & "1'98#S"



NCB97CBHFC@89H5@&&  
 G75@9' .96# & "1'98#S"

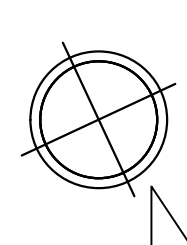


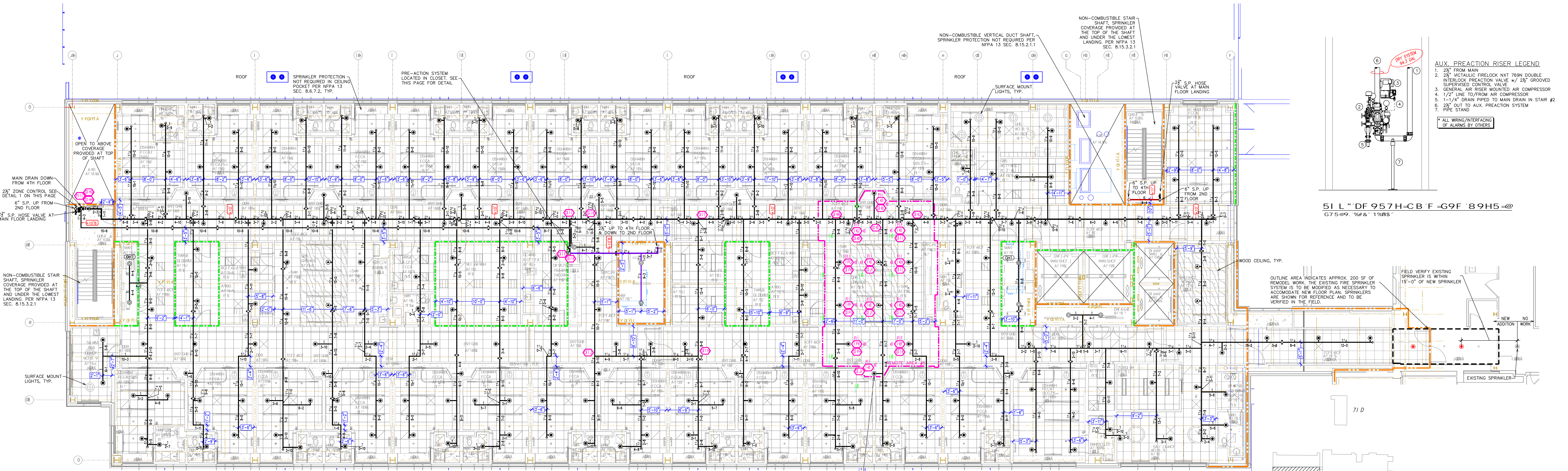
710  
 ? 9MD@5B

PA Dept. of Health  
 ID #0100-08  
 Dwg. Index # H-21-0037  
 Revision to: H-20-0994

SPRINKLER LEGEND (1.5M TOTAL)	TYPE	QTY	REMARKS
1	2 1/2" SUPERVISED BUTTERFLY VALVE	1	
2	2 1/2" CHECK VALVE	1	
3	2 1/2" COMMERCIAL RISER MANIFOLD w/ FLOW SWITCH, PRESSURE GAUGE, AND TEST & DRAIN w/ PRESSURE COMBINED MAIN-RELIEF VALVE	1	
4	2-1/2" COMBINED MAIN DRAIN	1	
5	2 1/2" FDC	1	
6	2 1/2" COPPER TUBE SPRINKLER	1	
7	2 1/2" EXISTING SPRINKLER PIPE	1	
8	2 1/2" FOAM SYSTEM PIPING	1	
9	2 1/2" WET SYSTEM FIRE SPRINKLER PIPING	1	
10	2 1/2" PREACTION SYSTEM FIRE SPRINKLER PIPING	1	
11	2 1/2" STANDPIPE PIPING	1	
12	2 1/2" FDC PIPING	1	
13	2 1/2" COPPER TUBE SPRINKLER PIPING	1	
14	2 1/2" EXISTING SPRINKLER PIPE	1	
15	2 1/2" FOAM SYSTEM PIPING	1	
16	2 1/2" WET SYSTEM FIRE SPRINKLER PIPING	1	
17	2 1/2" PREACTION SYSTEM FIRE SPRINKLER PIPING	1	
18	2 1/2" STANDPIPE PIPING	1	
19	2 1/2" FDC PIPING	1	
20	2 1/2" COPPER TUBE SPRINKLER PIPING	1	
21	2 1/2" EXISTING SPRINKLER PIPE	1	
22	2 1/2" FOAM SYSTEM PIPING	1	
23	2 1/2" WET SYSTEM FIRE SPRINKLER PIPING	1	
24	2 1/2" PREACTION SYSTEM FIRE SPRINKLER PIPING	1	
25	2 1/2" STANDPIPE PIPING	1	
26	2 1/2" FDC PIPING	1	
27	2 1/2" COPPER TUBE SPRINKLER PIPING	1	
28	2 1/2" EXISTING SPRINKLER PIPE	1	
29	2 1/2" FOAM SYSTEM PIPING	1	
30	2 1/2" WET SYSTEM FIRE SPRINKLER PIPING	1	
31	2 1/2" PREACTION SYSTEM FIRE SPRINKLER PIPING	1	
32	2 1/2" STANDPIPE PIPING	1	
33	2 1/2" FDC PIPING	1	
34	2 1/2" COPPER TUBE SPRINKLER PIPING	1	
35	2 1/2" EXISTING SPRINKLER PIPE	1	
36	2 1/2" FOAM SYSTEM PIPING	1	
37	2 1/2" WET SYSTEM FIRE SPRINKLER PIPING	1	
38	2 1/2" PREACTION SYSTEM FIRE SPRINKLER PIPING	1	
39	2 1/2" STANDPIPE PIPING	1	
40	2 1/2" FDC PIPING	1	
41	2 1/2" COPPER TUBE SPRINKLER PIPING	1	
42	2 1/2" EXISTING SPRINKLER PIPE	1	
43	2 1/2" FOAM SYSTEM PIPING	1	
44	2 1/2" WET SYSTEM FIRE SPRINKLER PIPING	1	
45	2 1/2" PREACTION SYSTEM FIRE SPRINKLER PIPING	1	
46	2 1/2" STANDPIPE PIPING	1	
47	2 1/2" FDC PIPING	1	
48	2 1/2" COPPER TUBE SPRINKLER PIPING	1	
49	2 1/2" EXISTING SPRINKLER PIPE	1	
50	2 1/2" FOAM SYSTEM PIPING	1	
51	2 1/2" WET SYSTEM FIRE SPRINKLER PIPING	1	
52	2 1/2" PREACTION SYSTEM FIRE SPRINKLER PIPING	1	
53	2 1/2" STANDPIPE PIPING	1	
54	2 1/2" FDC PIPING	1	
55	2 1/2" COPPER TUBE SPRINKLER PIPING	1	
56	2 1/2" EXISTING SPRINKLER PIPE	1	
57	2 1/2" FOAM SYSTEM PIPING	1	
58	2 1/2" WET SYSTEM FIRE SPRINKLER PIPING	1	
59	2 1/2" PREACTION SYSTEM FIRE SPRINKLER PIPING	1	
60	2 1/2" STANDPIPE PIPING	1	
61	2 1/2" FDC PIPING	1	
62	2 1/2" COPPER TUBE SPRINKLER PIPING	1	
63	2 1/2" EXISTING SPRINKLER PIPE	1	
64	2 1/2" FOAM SYSTEM PIPING	1	
65	2 1/2" WET SYSTEM FIRE SPRINKLER PIPING	1	
66	2 1/2" PREACTION SYSTEM FIRE SPRINKLER PIPING	1	
67	2 1/2" STANDPIPE PIPING	1	
68	2 1/2" FDC PIPING	1	
69	2 1/2" COPPER TUBE SPRINKLER PIPING	1	
70	2 1/2" EXISTING SPRINKLER PIPE	1	
71	2 1/2" FOAM SYSTEM PIPING	1	
72	2 1/2" WET SYSTEM FIRE SPRINKLER PIPING	1	
73	2 1/2" PREACTION SYSTEM FIRE SPRINKLER PIPING	1	
74	2 1/2" STANDPIPE PIPING	1	
75	2 1/2" FDC PIPING	1	
76	2 1/2" COPPER TUBE SPRINKLER PIPING	1	
77	2 1/2" EXISTING SPRINKLER PIPE	1	
78	2 1/2" FOAM SYSTEM PIPING	1	
79	2 1/2" WET SYSTEM FIRE SPRINKLER PIPING	1	
80	2 1/2" PREACTION SYSTEM FIRE SPRINKLER PIPING	1	
81	2 1/2" STANDPIPE PIPING	1	
82	2 1/2" FDC PIPING	1	
83	2 1/2" COPPER TUBE SPRINKLER PIPING	1	
84	2 1/2" EXISTING SPRINKLER PIPE	1	
85	2 1/2" FOAM SYSTEM PIPING	1	
86	2 1/2" WET SYSTEM FIRE SPRINKLER PIPING	1	
87	2 1/2" PREACTION SYSTEM FIRE SPRINKLER PIPING	1	
88	2 1/2" STANDPIPE PIPING	1	
89	2 1/2" FDC PIPING	1	
90	2 1/2" COPPER TUBE SPRINKLER PIPING	1	
91	2 1/2" EXISTING SPRINKLER PIPE	1	
92	2 1/2" FOAM SYSTEM PIPING	1	
93	2 1/2" WET SYSTEM FIRE SPRINKLER PIPING	1	
94	2 1/2" PREACTION SYSTEM FIRE SPRINKLER PIPING	1	
95	2 1/2" STANDPIPE PIPING	1	
96	2 1/2" FDC PIPING	1	
97	2 1/2" COPPER TUBE SPRINKLER PIPING	1	
98	2 1/2" EXISTING SPRINKLER PIPE	1	
99	2 1/2" FOAM SYSTEM PIPING	1	
100	2 1/2" WET SYSTEM FIRE SPRINKLER PIPING	1	

**F 9 GDF =B? @9F D@5B I' 9@-D58 I'5F 95'5**  
 G75@9' .96# & "1'98#S"





- AUX. PREACTION RISER LEGEND**
- 2 1/2" FROM MAIN
  - 2 1/2" VERTICAL FIRELOCK W/ 780N DOUBLE INTERLOCK PREACTION VALVE w/ 2 1/2" GROOVED SUPERVISED CONTROL VALVE
  - GENERAL AIR RISER MOUNTED AIR COMPRESSOR
  - 1/2" LINE TO/ FROM AIR COMPRESSOR
  - 1-1/4" DRAIN PIPED TO MAIN DRAIN IN STAR 21
  - 2 1/2" OUT TO AUX. PREACTION SYSTEM
  - PIPE STAND
- \* ALL BRING/INTERFACING OF ALARMS BY OTHERS

51 L" DF 957H-CB F-G9F 89H5 @  
G75 @ 9" W/ 8" 1 1/2" RIS

**C-C8 7B: 8A7**

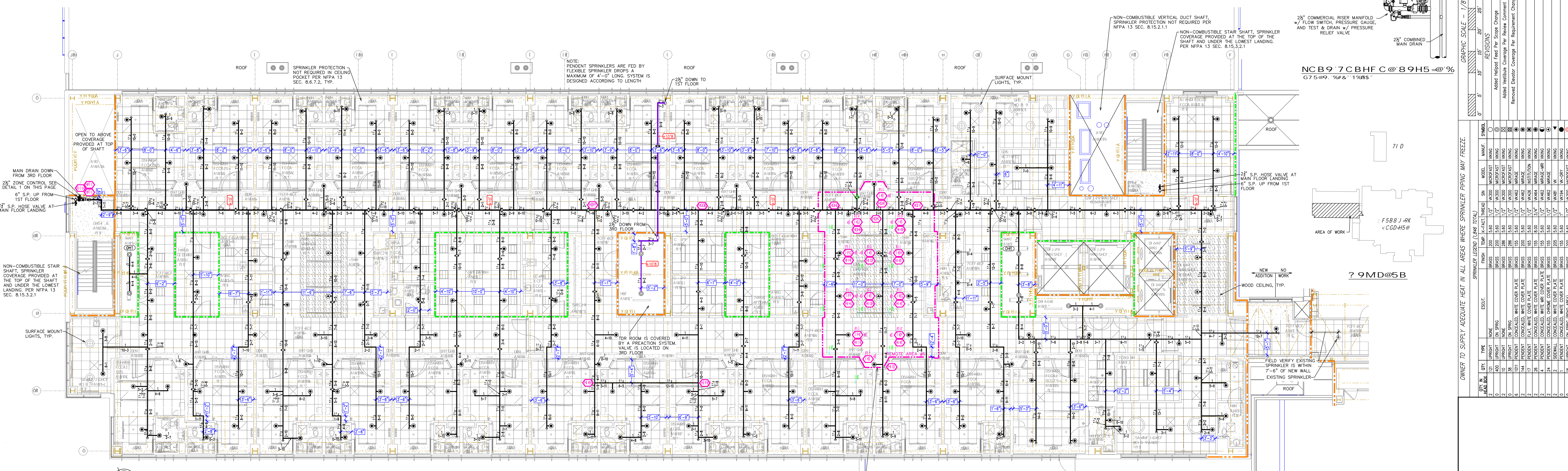
- WET SYSTEM FIRE SPRINKLER PIPING
- PREACTION SYSTEM FIRE SPRINKLER PIPING
- STANDPIPE PIPING
- FOC PIPING
- COPPER TUBE SPRINKLER PIPING
- EXISTING SPRINKLER PIPE
- FOAM SYSTEM PIPING

Design Area # 06 HAZARD/LIGHT  
Zone 4 System Type WET  
Location: 3RD FLR STAFF STATION

Flowing Outlets: 12 Remote Area: 1043  
Density: 0.10  
Req'd @ BOR  
Flow 191.9 gpm @ 40.4 psi  
Calculation Safety: 90.1 psi  
Includes 100 gpm hose allowance

NOTE:  
1500 S.F. REMOTE AREA REDUCED BY 40% TO 900 S.F. PER NFPA 13, SEC. 11.2.3.2.1 DUE TO THE USE OF QUICK RESPONSE SPRINKLERS AND A 9'-0" DECK HEIGHT.

75 @ 7 D @ 5 7 5 E 8  
: F 9 GDF-B? @9F D@5B'1 H<-F 8 : @CCF'1 5F 95 5  
G75 @ 9" W/ 8" 1 1/2" RIS



NCB9 7CBHF C @ 89H5 @ %  
G75 @ 9" W/ 8" 1 1/2" RIS

**C-C8 7B: 8A7**

- WET SYSTEM FIRE SPRINKLER PIPING
- PREACTION SYSTEM FIRE SPRINKLER PIPING
- STANDPIPE PIPING
- FOC PIPING
- COPPER TUBE SPRINKLER PIPING
- EXISTING SPRINKLER PIPE
- FOAM SYSTEM PIPING

Design Area # 06 HAZARD/LIGHT  
Zone 3 System Type WET  
Location: 2ND FLR STAFF STATION

Flowing Outlets: 12 Remote Area: 1043  
Density: 0.10  
Req'd @ BOR  
Flow 191.6 gpm @ 40.3 psi  
Calculation Safety: 86.4 psi  
Includes 100 gpm hose allowance

NOTE:  
1500 S.F. REMOTE AREA REDUCED BY 40% TO 900 S.F. PER NFPA 13, SEC. 11.2.3.2.1 DUE TO THE USE OF QUICK RESPONSE SPRINKLERS AND A 9'-0" DECK HEIGHT.

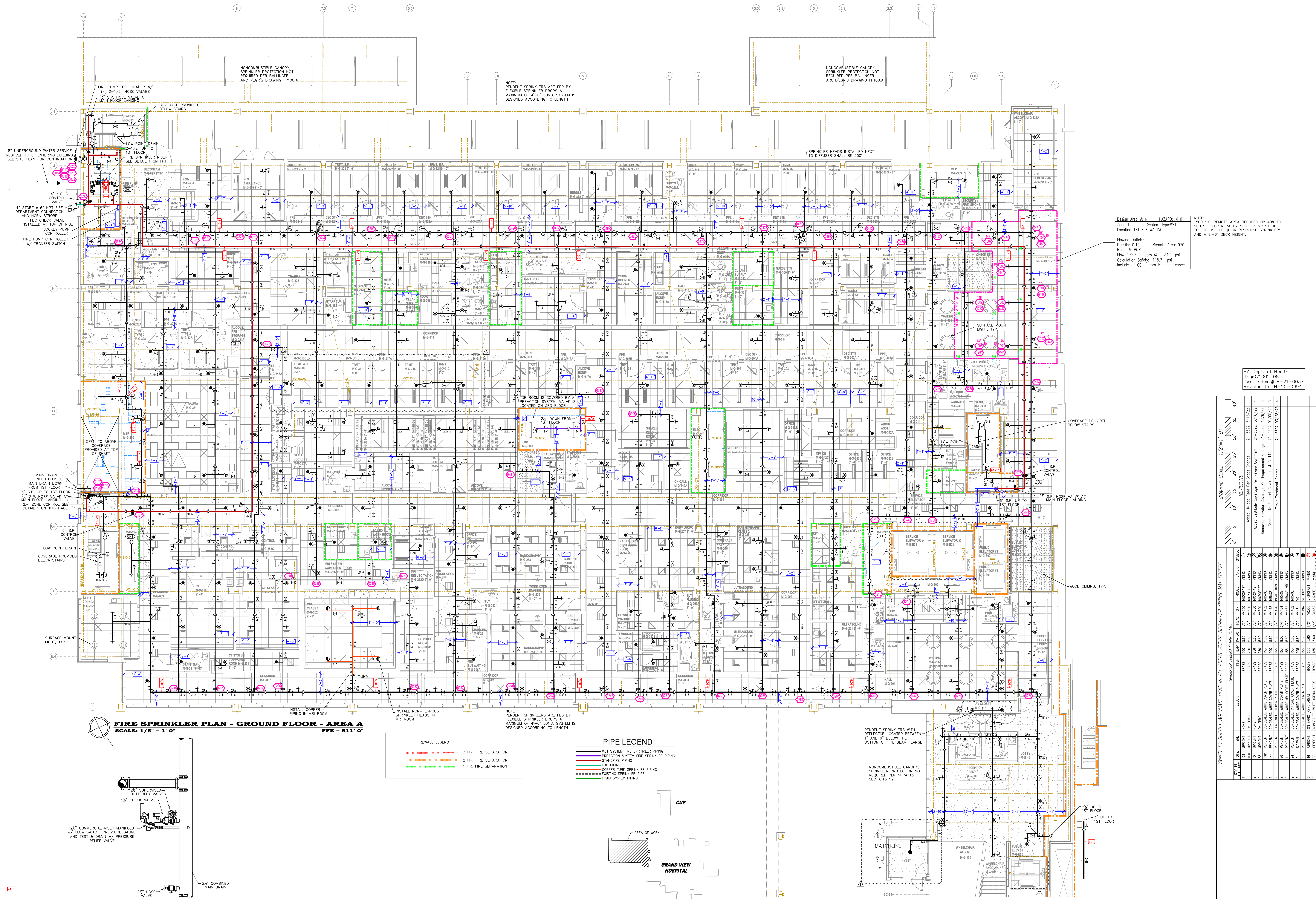
75 @ 7 D @ 5 7 5 E 8  
: F 9 GDF-B? @9F D@5B'1 G97CB8 : @CCF'1 5F 95 5  
G75 @ 9" W/ 8" 1 1/2" RIS

PA Dept. of Health  
ID #071001-08  
Dwg. Index # H-21-0037  
Revision to: H-20-0994

NO.	DATE	DESCRIPTION	BY	CHKD.
1	12/12/21	Added Hired/Feed Per Scope Change	21-332	3/16/21
2	12/12/21	Added Washdown Coverage Per Reuse Comment	21-332	3/16/21
3	12/12/21	Removed Director Coverage Per Requirement Change	21-332	12/6/21

OWNER TO SUPPLY ADEQUATE HEAT IN ALL AREAS WHERE SPRINKLER PIPING MAY FREEZE.	TYPE	QTY	UNIT	SPRINKLER LEGEND (FAM TOTAL)	STATUS
1	WET	1	MANIF	MANIF	MANIF
2	WET	1	VALVE	VALVE	VALVE
3	WET	1	VALVE	VALVE	VALVE
4	WET	1	VALVE	VALVE	VALVE
5	WET	1	VALVE	VALVE	VALVE
6	WET	1	VALVE	VALVE	VALVE
7	WET	1	VALVE	VALVE	VALVE
8	WET	1	VALVE	VALVE	VALVE
9	WET	1	VALVE	VALVE	VALVE
10	WET	1	VALVE	VALVE	VALVE
11	WET	1	VALVE	VALVE	VALVE
12	WET	1	VALVE	VALVE	VALVE
13	WET	1	VALVE	VALVE	VALVE
14	WET	1	VALVE	VALVE	VALVE
15	WET	1	VALVE	VALVE	VALVE
16	WET	1	VALVE	VALVE	VALVE
17	WET	1	VALVE	VALVE	VALVE
18	WET	1	VALVE	VALVE	VALVE
19	WET	1	VALVE	VALVE	VALVE
20	WET	1	VALVE	VALVE	VALVE

NO.	DATE	DESCRIPTION	BY	CHKD.
1	12/12/21	Added Hired/Feed Per Scope Change	21-332	3/16/21
2	12/12/21	Added Washdown Coverage Per Reuse Comment	21-332	3/16/21
3	12/12/21	Removed Director Coverage Per Requirement Change	21-332	12/6/21



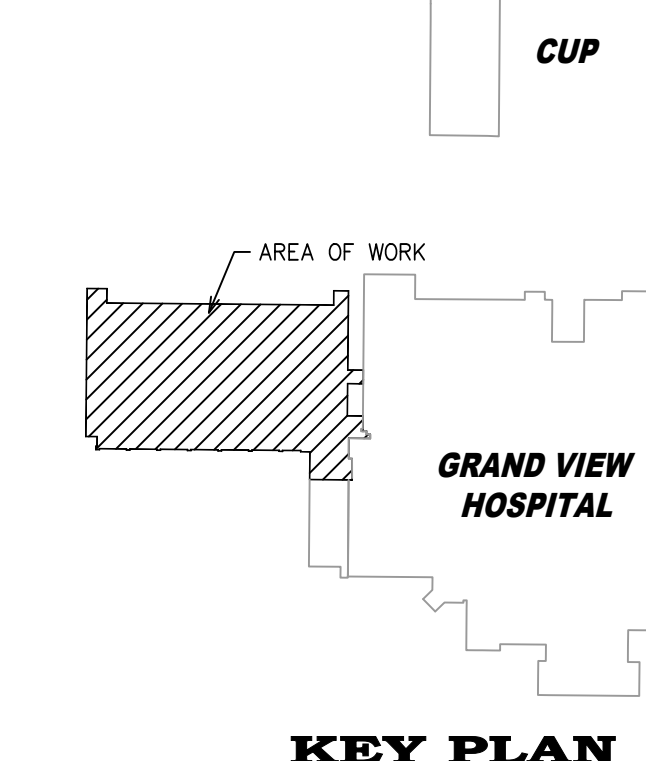
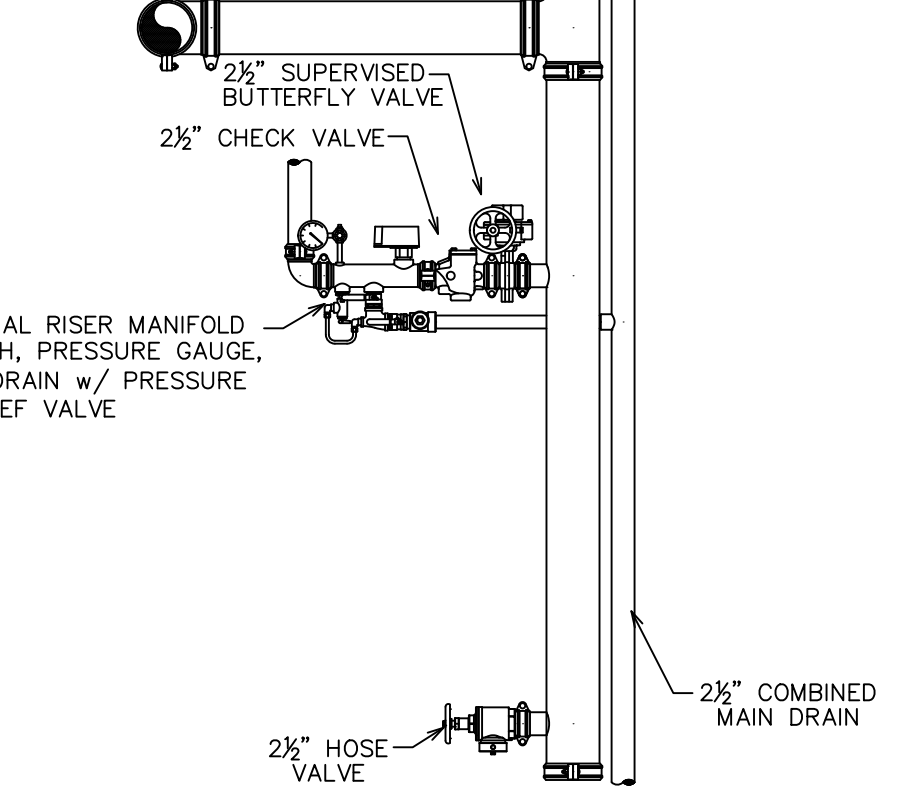
**FIRE SPRINKLER PLAN - GROUND FLOOR - AREA A**  
**SCALE: 1/8" = 1'-0"**

**FIREWALL LEGEND**

---	3 HR. FIRE SEPARATION
---	2 HR. FIRE SEPARATION
---	1 HR. FIRE SEPARATION

**PIPE LEGEND**

---	WET SYSTEM FIRE SPRINKLER PIPING
---	PREACTION SYSTEM FIRE SPRINKLER PIPING
---	STANDPIPE PIPING
---	TFC PIPING
---	COPPER TUBE SPRINKLER PIPING
---	EXISTING SPRINKLER PIPE
---	FOAM SYSTEM PIPING



Design Area #10 HAZARD LIGHT  
 Zone: System Type WET  
 Location: 1ST FLX WAITING  
 Flowing Outlets: 9  
 Density: 0.10 Remote Area: 970  
 Req'd @ BOR  
 Flow: 172.8 gpm @ 34.4 psi  
 Calculation Safety: 115.3 psi  
 Includes 100 gpm hose allowance

NOTE:  
 1500 S.F. REMOTE AREA REDUCED BY 40% TO 900 S.F. PER NFPA 13, SEC. 11.2.2.3.1 DUE TO THE USE OF QUICK RESPONSE SPRINKLERS AND A 9'-6" DECK HEIGHT.

PA Dept. of Health  
 Dwg. Index # H-21-0037  
 Revision to: H-20-0994

**REVISIONS**

NO.	DATE	DESCRIPTION
1	21-03/17/22	Added Hatched Feed Per Scope Change
2	21-03/17/22	Added Visible Coverage Per Revisions Comment
3	21-03/17/22	Removed Elevator Coverage Per Revisions Comment
4	21-03/17/22	Changed to Hatched Coverage in M-G-112
5	21-03/17/22	Final Treatment Rooms

**OWNER TO SUPPLY ADEQUATE HEAT IN ALL AREAS WHERE SPRINKLER PIPING MAY FREEZE.**

NO.	DATE	DESCRIPTION
1	21-03/17/22	WET SYSTEM FIRE SPRINKLER PIPING
2	21-03/17/22	PREACTION SYSTEM FIRE SPRINKLER PIPING
3	21-03/17/22	STANDPIPE PIPING
4	21-03/17/22	TFC PIPING
5	21-03/17/22	COPPER TUBE SPRINKLER PIPING
6	21-03/17/22	EXISTING SPRINKLER PIPE
7	21-03/17/22	FOAM SYSTEM PIPING

**SPRINKLER LEGEND (7,248 TOTAL)**

NO.	DATE	DESCRIPTION
1	21-03/17/22	WET SYSTEM FIRE SPRINKLER PIPING
2	21-03/17/22	PREACTION SYSTEM FIRE SPRINKLER PIPING
3	21-03/17/22	STANDPIPE PIPING
4	21-03/17/22	TFC PIPING
5	21-03/17/22	COPPER TUBE SPRINKLER PIPING
6	21-03/17/22	EXISTING SPRINKLER PIPE
7	21-03/17/22	FOAM SYSTEM PIPING