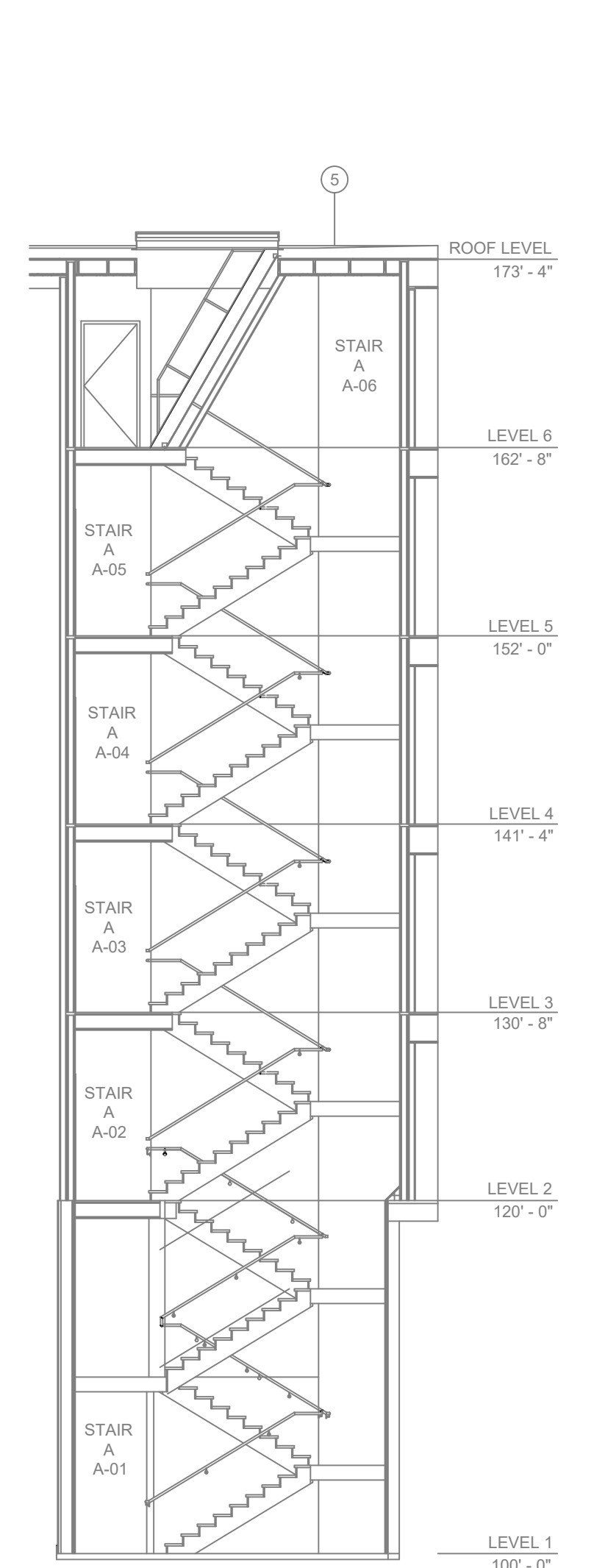
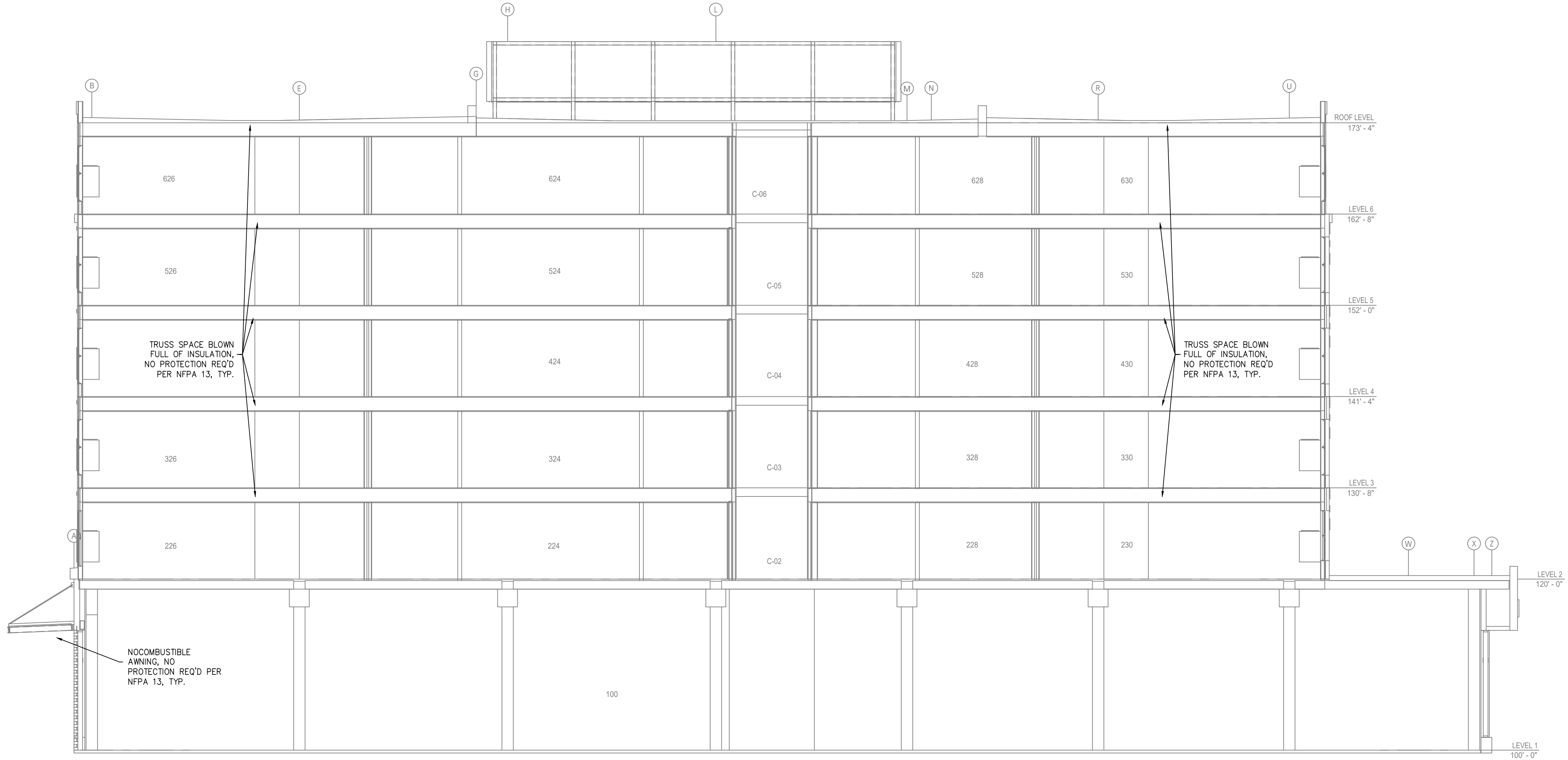


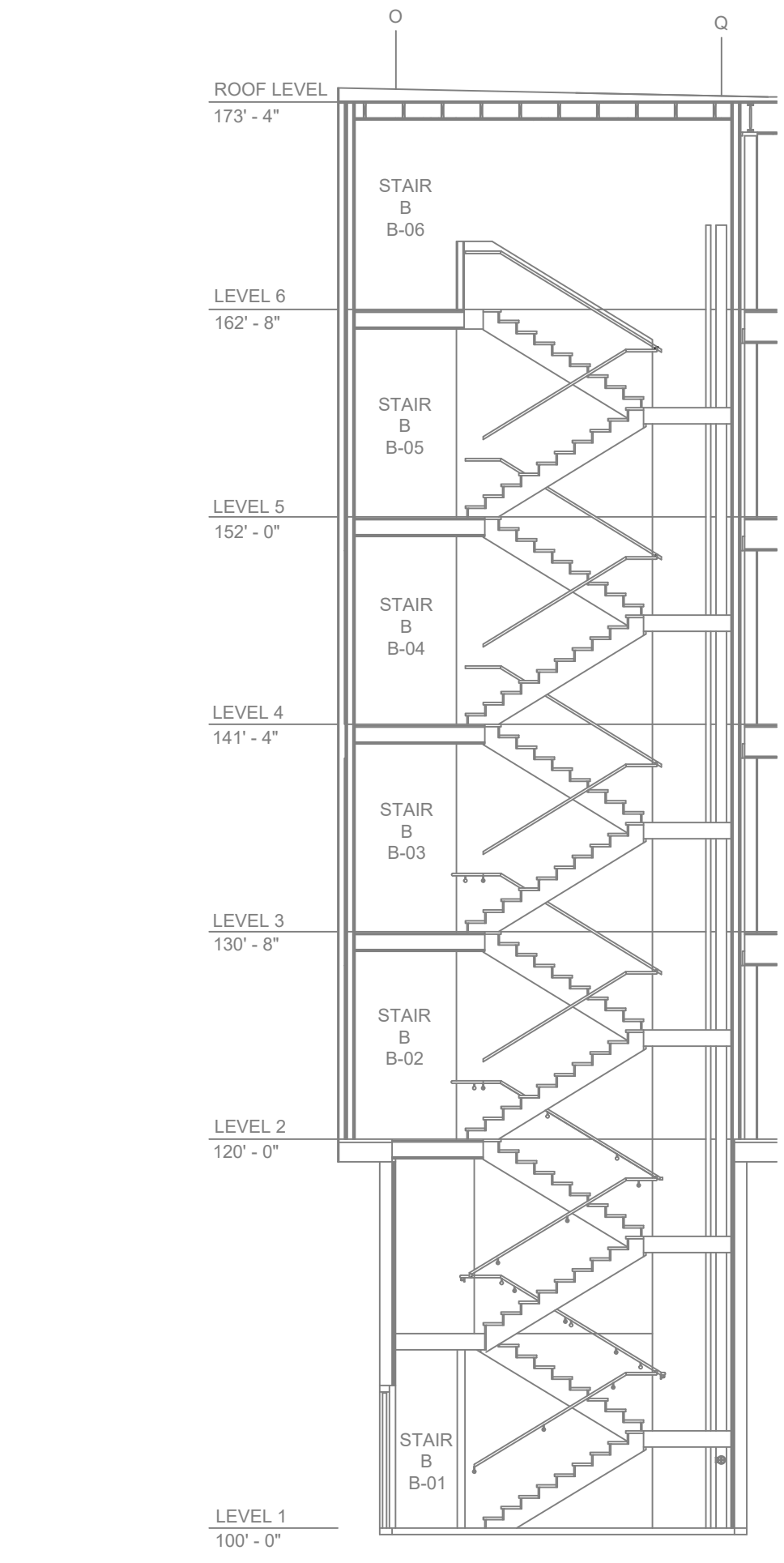
- GENERAL NOTES**
- MINNESOTA STATE BUILDING CODE (2020) - INTERNATIONAL BUILDING CODE (2018)
 - OCCUPANCY: A-3 ASSEMBLY, B BUSINESS, R-3 MULTIFAMILY, S-2 CLOSED PARKING GARAGE, F-1 TENTANT AREAS
 - TYPE OF CONSTRUCTION: I-A FIRST FLOOR, II-A SECOND FLOOR AND ABOVE
 - SPRINKLERED AREAS (APPROXIMATE - SEE ARCHITECTURAL PLANS FOR ACTUAL)
 - AREA "A" = 446,355 S.F. - ZONE 1
 - AREA "B" = 220,117 S.F. - ZONE 2
 - LEVEL 2 = 41,220 S.F. - ZONE 3
 - LEVEL 3 = 41,220 S.F. - ZONE 4
 - LEVEL 4 = 40,633 S.F. - ZONE 5
 - LEVEL 5 = 40,633 S.F. - ZONE 6
 - LEVEL 6 = 40,633 S.F. - ZONE 6
 - TOTAL = 270,811 S.F.
 - INSTALLATION STANDARDS: SPRINKLER SYSTEM DESIGNED AND INSTALLED PER NFPA-13, NFPA-14 (2016)
 - SPRINKLER PIPE TYPES:
 - WET:
 - 1" BRANCH LINES TO BE BLAZEMASTER CPVC PIPING WITH CEMENTED FITTINGS
 - 2" THROUGH 2" MAIN & BRANCH LINES TO BE BLAZEMASTER CPVC PIPING WITH CEMENTED FITTINGS
 - 1" BRANCH LINES TO BE BLK MEGA THREAD PIPING WITH THREADED FITTINGS
 - 1/2" THROUGH 4" MAIN & BRANCH LINES TO BE BLK MEGAFLOW PIPING WITH SHORT RADIUS GROOVED FITTINGS
 - 6" MAIN TO BE BLK SCHEDULE 10 PIPING WITH SHORT RADIUS GROOVED FITTINGS
 - DESIGN CRITERIA
 - RESIDENTIAL ROOMS, CORRIDORS, LOBBYS, AND SIMILAR AREAS DESIGNED TO LIGHT HAZARD GROUP 1
 - PARKING GARAGE, MECH ROOMS, STORAGE ROOMS, AND SIMILAR AREAS DESIGNED TO ORDINARY HAZARD GROUP 1
 - PRODUCTION AREAS DESIGNED TO ORDINARY HAZARD GROUP 2
 - REMOTE AREA REDUCTIONS HAVE BEEN TAKEN WHERE APPLICABLE PER NFPA 13 SEC. 11.2.3.2.3
 - SPRINKLERS OMITTED IN BATHROOMS LESS THAN 55 S.F. WITH WALLS AND CEILINGS OF NONCOMBUSTIBLE AND LIMITED-COMBUSTIBLE MATERIALS WITH A 15-MINUTE THERMAL BARRIER RATING, INCLUDING THE WALLS AND CEILINGS BEHIND ANY SHOWER OR TUB ENCLOSURE PER NFPA 13 SEC. 8.15.8.1.1
 - SPRINKLERS OMITTED IN LINEN PANTRIES LESS THAN 12 SQ. FT. WITH THE LEAST DIMENSION OF 3', WALLS AND CEILINGS OF NONCOMBUSTIBLE AND LIMITED-COMBUSTIBLE MATERIALS WITH A 15-MINUTE THERMAL BARRIER RATING INCLUDING WALLS AND CEILINGS WITH NO MECH. OR ELECTRICAL EQUIPMENT PER MN FIRE CODE 903.3.1.6.4 AND MN RULE 7511.0903
 - NOTES:
 - ALL MATERIAL TO BE NEW AND MEET U.L. STANDARDS
 - HANGERS TO BE INSTALLED IN ACCORDANCE WITH NFPA 13 (2016) - SEE PLAN FOR HANGING REQUIREMENTS
 - SYMBOLS USED ON DRAWINGS:
 - 196" PIPE ELEVATION A.F.F.
 - 112" PIPE ELEVATION BELOW B.O.D.
 - OH ROOM HAZARD CLASSIFICATION (ALL ROOMS ARE CONSIDERED LIGHT HAZARD UNLESS NOTED)
 - F HYDRAULIC CALCULATION JUNCTION POINT
 - 0'-0" CEILING HEIGHT
 - SCOPE OF WORK:
 - NEW APARTMENT BUILDING INSTALLED BY PER THE 2018 IBC, 2020 MN STATE BUILDING CODE AND 2016 NFPA 13
 - BUILDING WILL BE PROVIDED WITH A STANDPIPE SYSTEM WITH HOSE VALVES AT THE MAIN LANDINGS FOR STAIRS A, B & C
 - STANDPIPE SYSTEM HAS BEEN DESIGNED TO MSFC AMENDMENT [905.2.1]
 - SPRINKLER SYSTEM WILL BE ZONED PER FLOOR
 - RESIDENTIAL FLOORS 5 AND 6 ARE COMBINED INTO ONE ZONE.
 - ALL AREAS OF THE BUILDING TO BE INSTALLED AND COVERED IN ACCORDANCE WITH THE LOCAL AUTHORITY HAVING JURISDICTION AND PER NFPA 13 (2016)



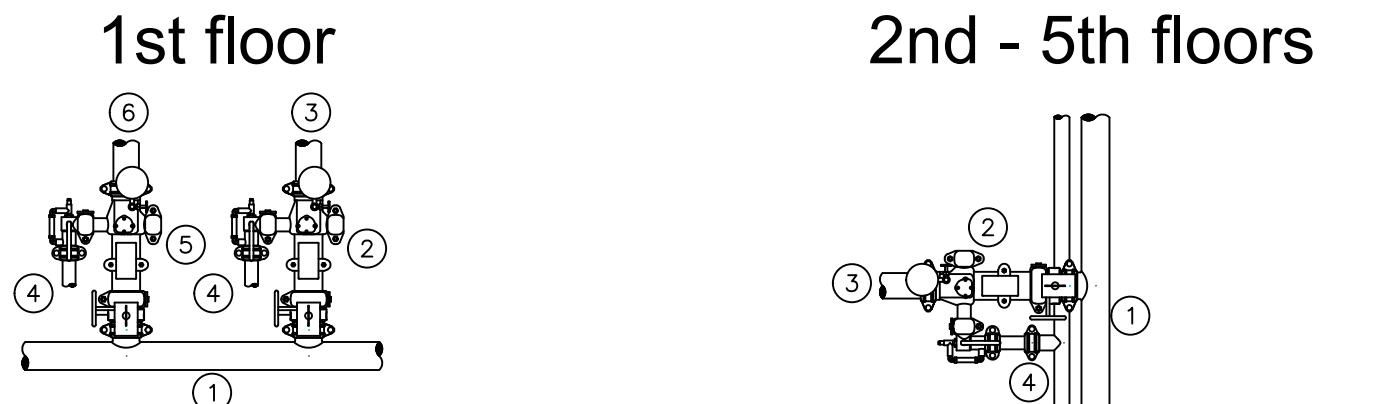
B STAIR SECTION
SCALE= 1/8" : 1'-0"



A BUILDING SECTION
SCALE= 1/8" : 1'-0"



C STAIR SECTION
SCALE= 1/4" : 1'-0"

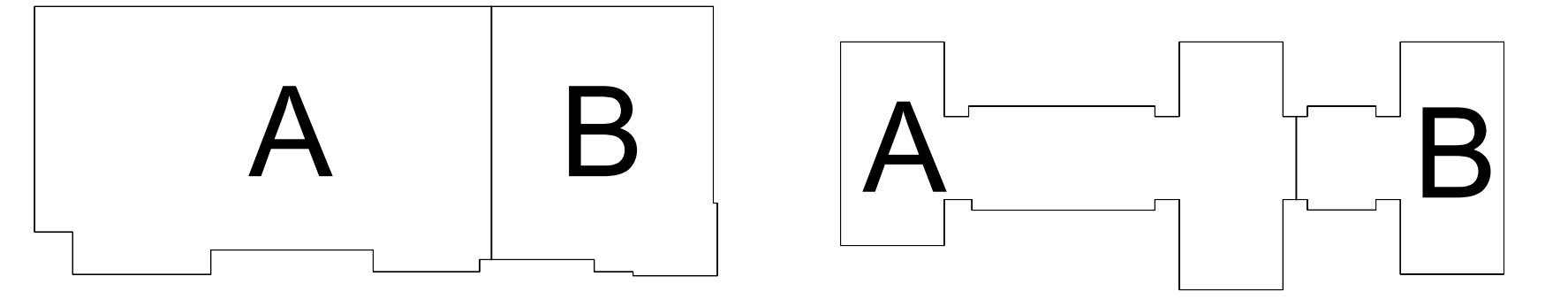


- ZONE CONTROL LEGEND**
- 4" FEED MAIN
 - 3" VICTALIC UNIVERSAL MANIFOLD CHECK ASSEMBLY
 - 2" VICTALIC UNIVERSAL MANIFOLD CHECK ASSEMBLY
 - 2" DRAIN RISER
 - 4" VICTALIC UNIVERSAL MANIFOLD CHECK ASSEMBLY
 - 4" TO ZONE 2 AREA "B" SPRINKLER SYSTEM

3 ZONE CONTROL DETAILS
SCALE= 1/2" : 1'-0"

PIPE LEGEND

- BLACK STEEL FIRE SPRINKLER PIPING
- CPVC FIRE SPRINKLER PIPING
- FIRE SPRINKLER STANDPIPE PIPING



KEYPLAN

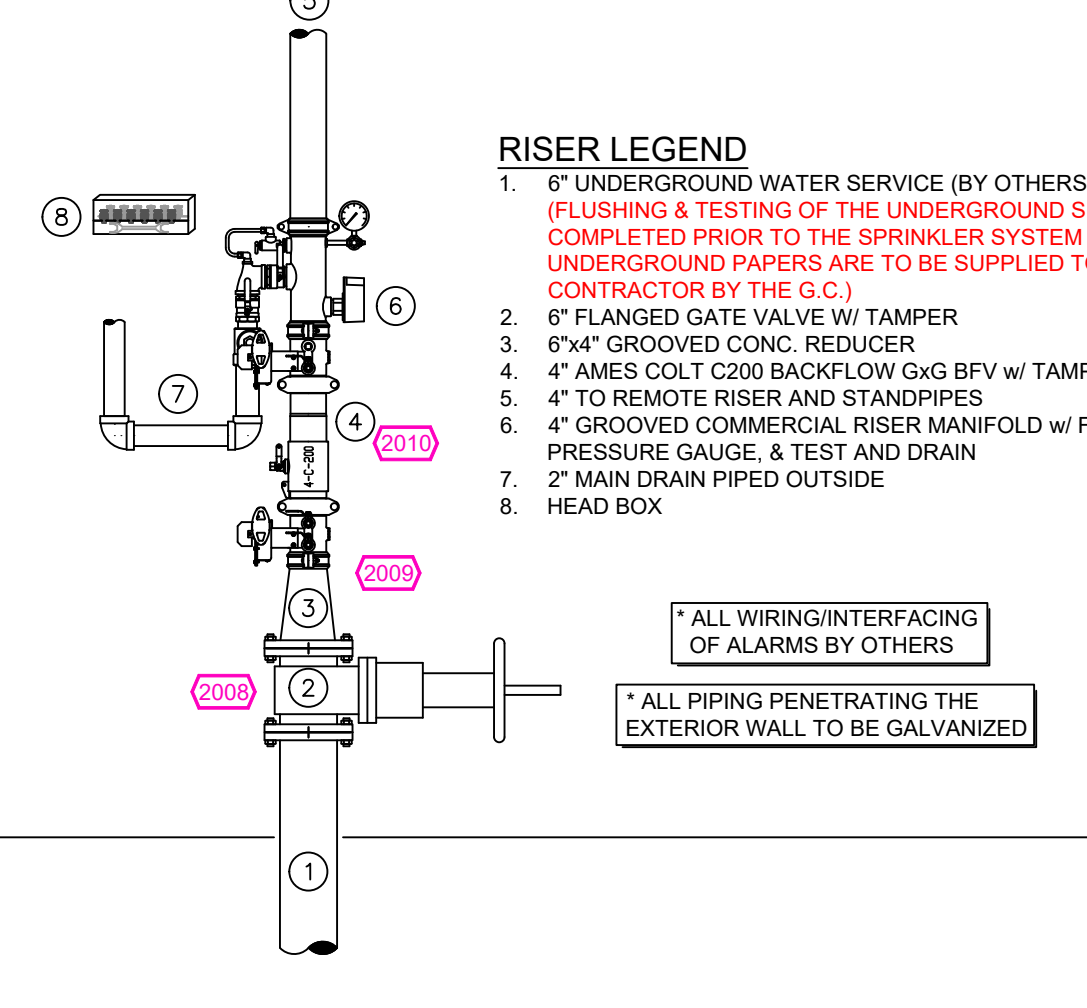
SPRINKLER HEAD LEGEND

SYM	QTY	POSITION	FINISH	TEMP	X	NPT	SN	MFG	MODEL#	MAX SPACING U.N.O.
124	UPR	BRASS	286	14.00	3/4"	TY6137	TYco	EC-14	15 X 14	14 X 14
333	PEND	WHITE	200	5.60	1/2"	TY313	TYco	TY-FRB	15 X 15	130 S.F. OH
65	UPR	BRASS	200	5.60	1/2"	TY313	TYco	TY-FRB	15 X 15	130 S.F. OH
18	PEND	WHITE	200	11.20	3/4"	TY3237	TYco	EC-11	20 X 20	
39	UPR	BRASS	286	14.00	3/4"	TY6137	TYco	EC-14	14 X 14	
1364	PEND	WHITE	155	4.90	1/2"	TY226	TYco	LFS	18 X 18	
93	SIDE	WHITE	155	5.80	1/2"	RA1564	RELABL	DH56	28 X 8	
17	SIDE	WHITE	200	8.00	3/4"	TY432	TYco	TY-FRB	14 X 24	
107	SIDE	BRASS	200	5.60	1/2"	TY331	TYco	TY-FRB	14 X 14 LH	10 X 10 OH
26	PEND	WHITE	155	8.00	3/4"	TY423	TYco	EC-8	28 X 8	
351	SIDE	WHITE	155	4.40	1/2"	TY234	TYco	LFS	16 X 16	
94	SIDE	WHITE	155	5.80	1/2"	VK460	VIRKING	FREEDOM	16 X 20	
194	UPR	BRASS	200	8.00	3/4"	TY4131	TYco	TY-FRB	15 X 15	130 S.F. OH
2739	TOTAL									

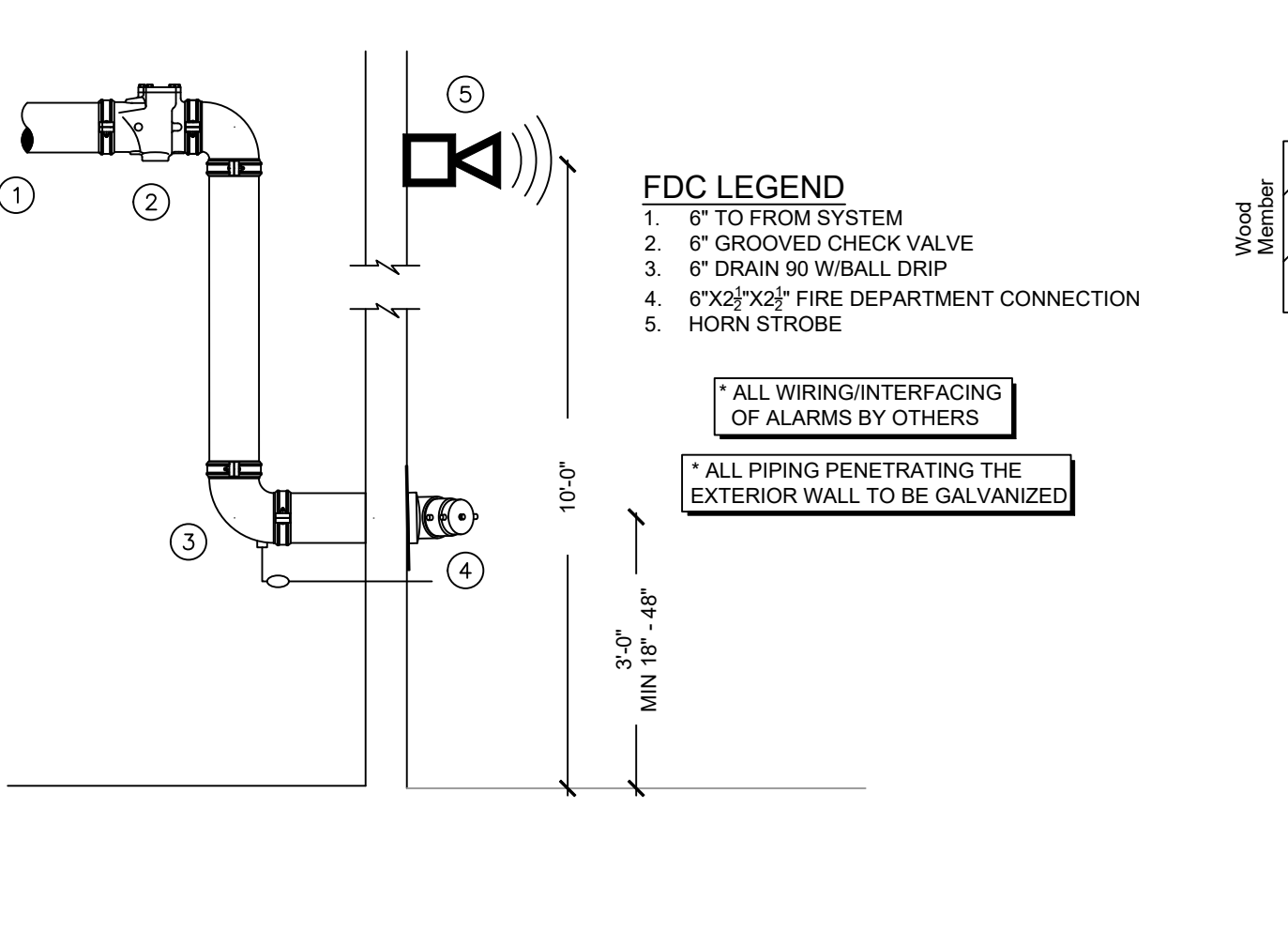
SPRINKLER HEAD LEGEND

MAXIMUM DISTANCE BETWEEN HANGERS (FT.-IN.)

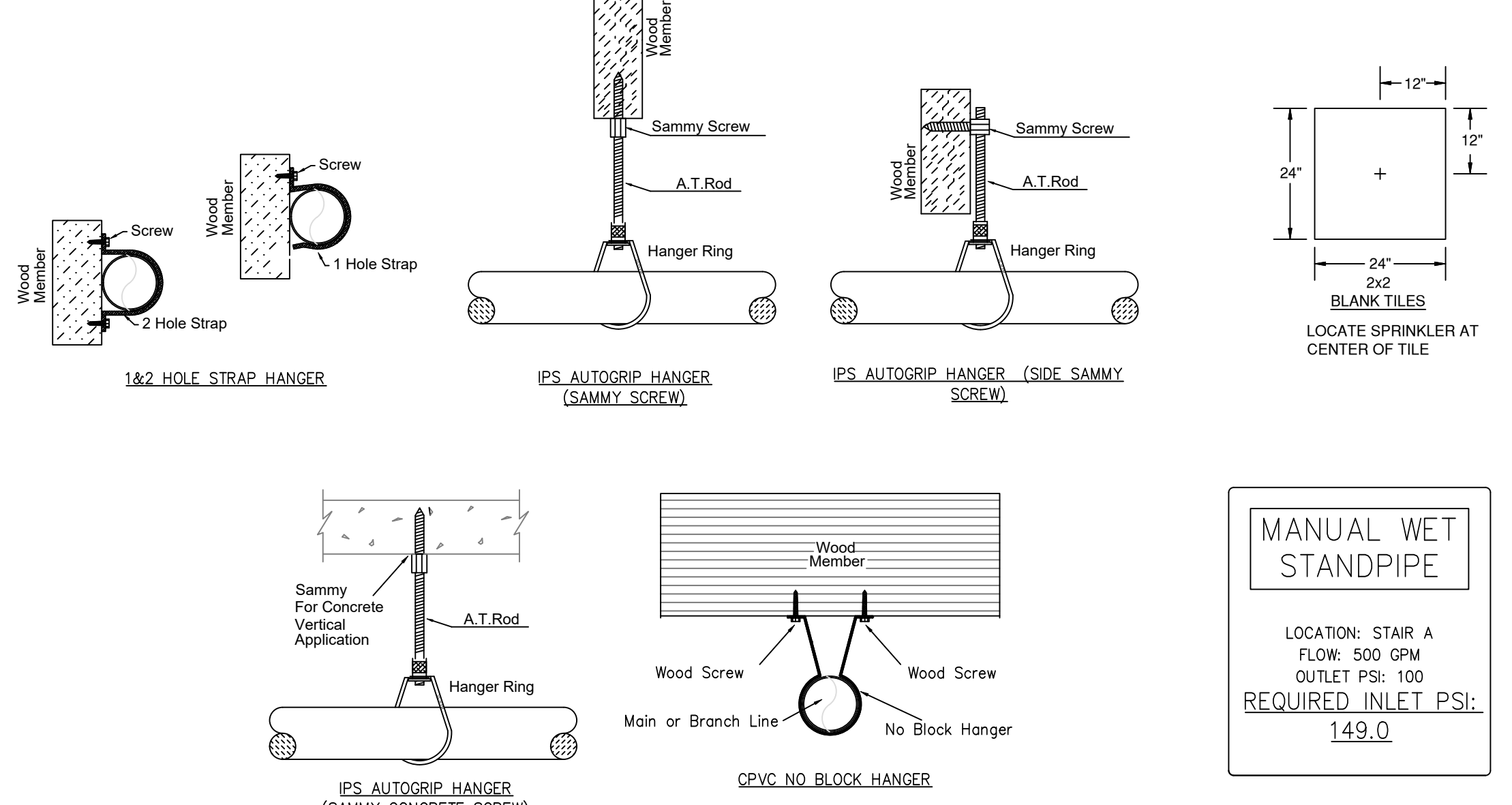
	NOMINAL PIPE SIZE (IN.)									
	3/4"	1"	1 1/4"	1 1/2"	2"	2 1/2"	3"	4"	6"	8"
STEEL PIPE EXCEPT THREADED LIGHTWALL	NA	12-0	12-0	15-0	15-0	15-0	15-0	15-0	15-0	15-0
THREADED LIGHTWALL STEEL PIPE	NA	12-0	12-0	12-0	12-0	NA	NA	NA	NA	NA
BLAZEMASTER CPVC	5-6	6-0	6-6	7-0	8-0	9-0	10-0	NA	NA	NA



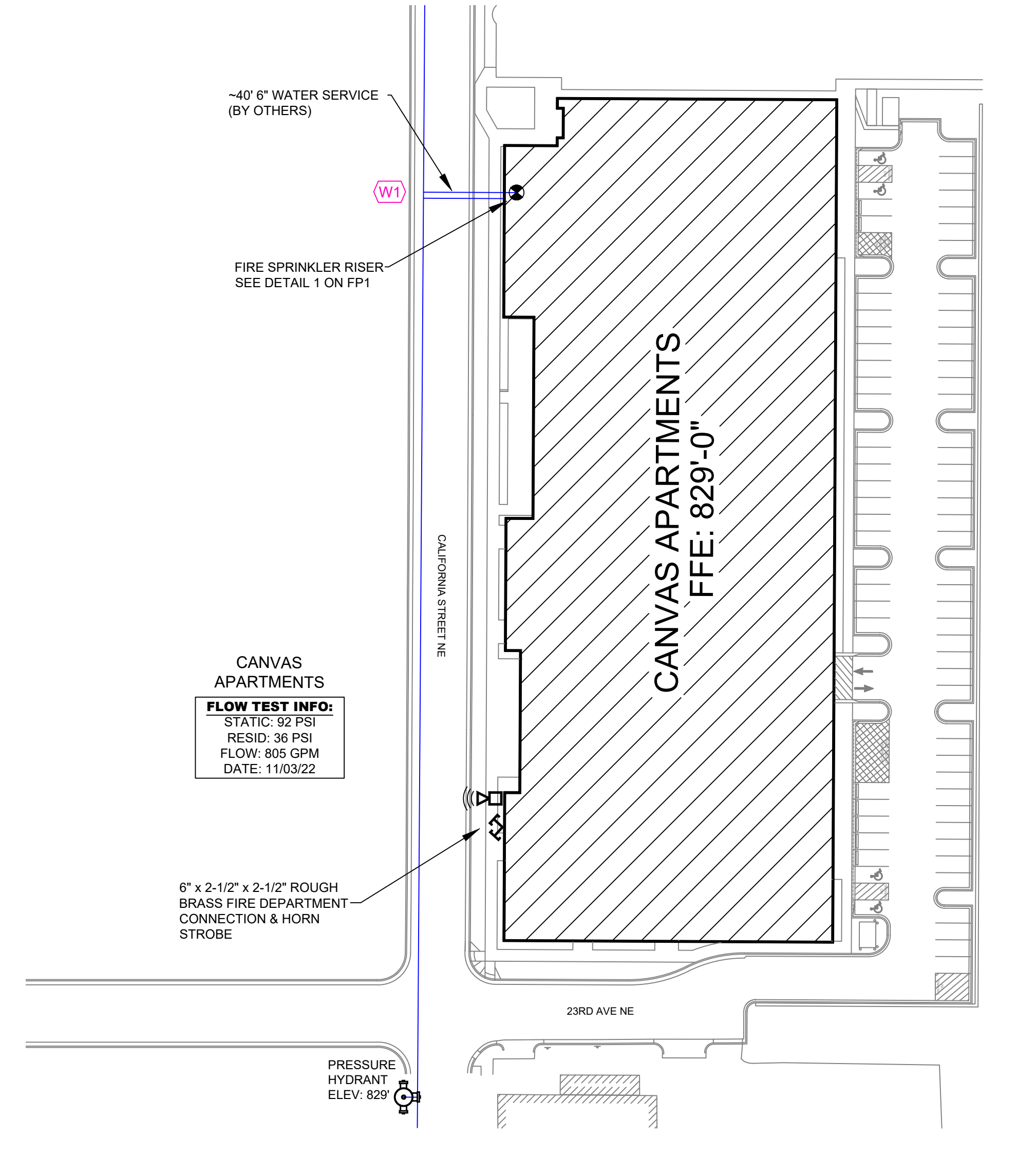
1 RISER DETAIL
SCALE= 1/2" : 1'-0"



2 FDC DETAIL
SCALE= 1/2" : 1'-0"



HANGER DETAILS



SITE PLAN
SCALE= 1" = 50'-0"

GENERAL NOTES

- SYSTEM INSTALLED PER NFPA 13 (2016 EDITION) AND STATE FIRE MARSHAL'S OFFICE APPROVED LISTED PRODUCTS.
- MINIMUM PIPE SIZE SHALL BE 1" NOMINAL PIPE SIZE FOR ALL BRANCH LINES.
- SHORT RADIUS FITTINGS SHALL BE USED THROUGHOUT.
- ALL WELDING PER NFPA 13 SHALL BE DONE WITHOUT APPROVED SHOP DRAWINGS. CONTRACTOR TO BE FIELD REASURED PRIOR TO FABRICATION AND INSTALLED BY SPRINKLER CONTRACTOR.
- ALL WELDING SHALL BE DONE IN ACCORDANCE WITH THE WELDING CODE AND HIGH TEMPERATURE WELDING SHALL BE USED WHERE REQUIRED.
- HANGERS ARE TO BE USED IN ACCORDANCE WITH NFPA 13 (2016).
- ELECTRICAL WIRING, ALARM DETECTION AND SUPERVISORY BY OWNER SHALL BE INSTALLED IN ACCORDANCE WITH NFPA 72 (2013 EDITION) AND NFPA 70 (2017 EDITION).
- WET SYSTEM PIPING FROM FREEZING.

APPROVAL STAMPS

NO.	DATE	REVISIONS

DRIVEN
FIRE CONSULTANTS

910 N. SCANDIA AVENUE, ST. LOUIS, MO 63101 PHONE: (603)-444-9200

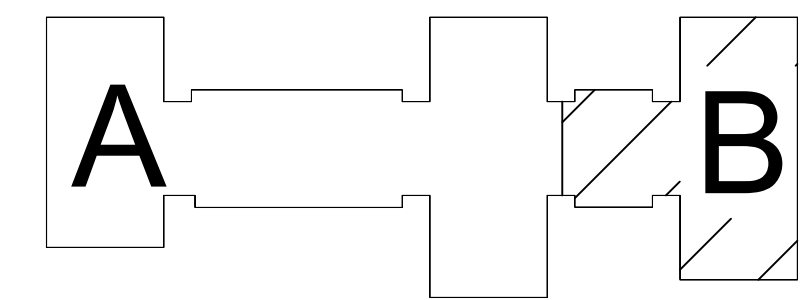
CANVAS APARTMENTS
2301 CALIFORNIA ST NE
MINNEAPOLIS, MN 55418

Contract No: **C22-133**

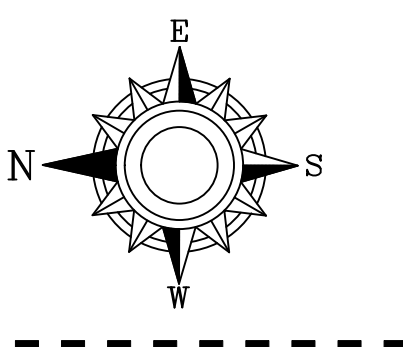
Drawing Date: 3/4/2023
Scale: 1/8" = 1'-0"

Drawn By: JVG
Approval By: STATE FIRE MARSHAL DIV.

SHEET NO: **FP 1 of 13**



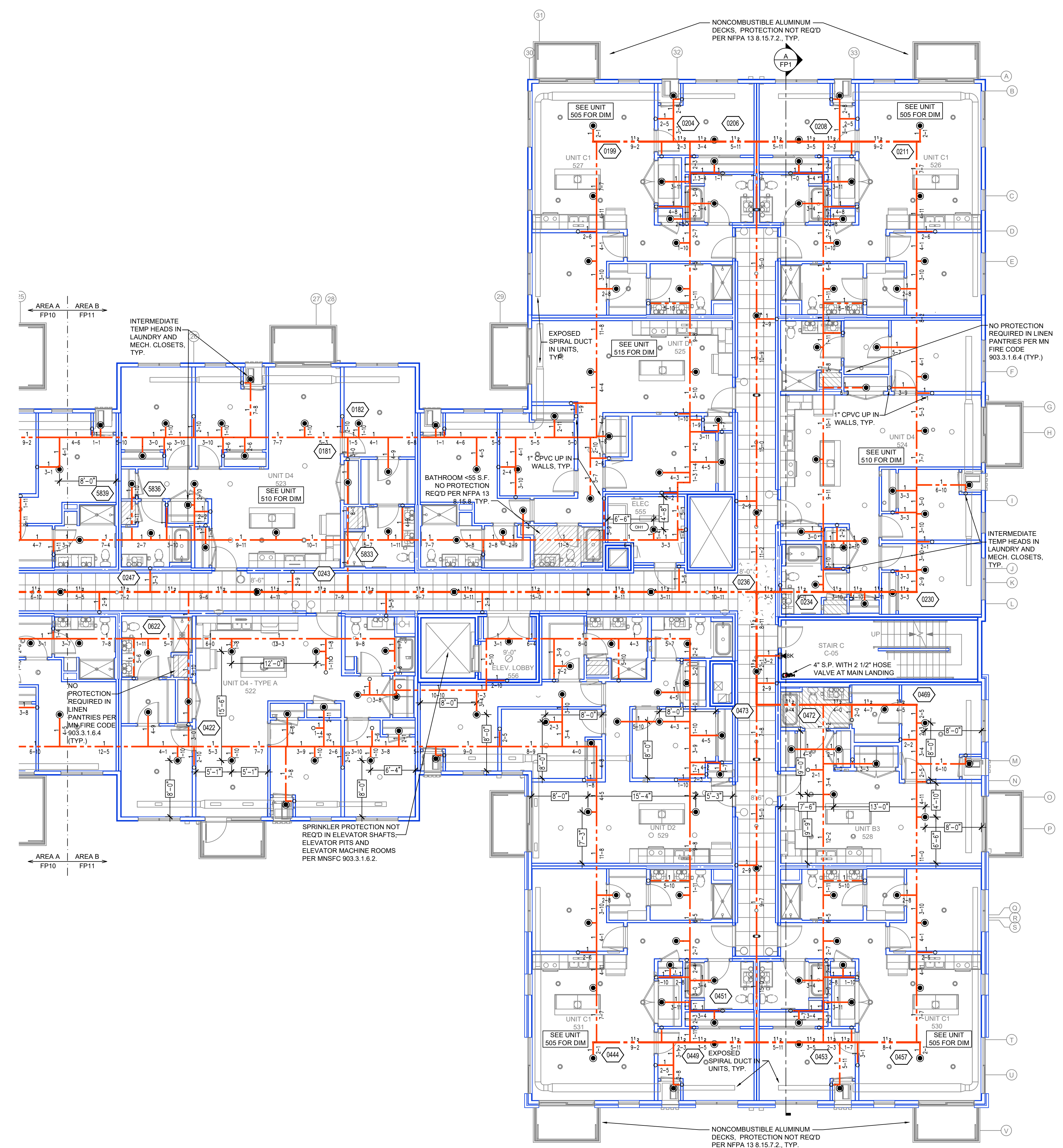
KEYPLAN



- GENERAL NOTES
1. SYSTEM INSTALLED PER NFPA 13 (2016 EDITION) AND STATE FIRE MARSHAL'S APPROVAL.
 2. ALL WELDING SHALL BE PER NFPA 511 (2016 EDITION) AND STATE FIRE MARSHAL'S APPROVAL.
 3. ALL WELDING SHALL BE PER NFPA 511 (2016 EDITION) AND STATE FIRE MARSHAL'S APPROVAL.
 4. ALL WELDING SHALL BE PER NFPA 511 (2016 EDITION) AND STATE FIRE MARSHAL'S APPROVAL.
 5. ALL WELDING SHALL BE PER NFPA 511 (2016 EDITION) AND STATE FIRE MARSHAL'S APPROVAL.
 6. ALL WELDING SHALL BE PER NFPA 511 (2016 EDITION) AND STATE FIRE MARSHAL'S APPROVAL.
 7. ALL WELDING SHALL BE PER NFPA 511 (2016 EDITION) AND STATE FIRE MARSHAL'S APPROVAL.
 8. ALL WELDING SHALL BE PER NFPA 511 (2016 EDITION) AND STATE FIRE MARSHAL'S APPROVAL.
 9. ALL WELDING SHALL BE PER NFPA 511 (2016 EDITION) AND STATE FIRE MARSHAL'S APPROVAL.
 10. ALL WELDING SHALL BE PER NFPA 511 (2016 EDITION) AND STATE FIRE MARSHAL'S APPROVAL.
 11. ALL WELDING SHALL BE PER NFPA 511 (2016 EDITION) AND STATE FIRE MARSHAL'S APPROVAL.
 12. ALL WELDING SHALL BE PER NFPA 511 (2016 EDITION) AND STATE FIRE MARSHAL'S APPROVAL.
 13. ALL WELDING SHALL BE PER NFPA 511 (2016 EDITION) AND STATE FIRE MARSHAL'S APPROVAL.
 14. ALL WELDING SHALL BE PER NFPA 511 (2016 EDITION) AND STATE FIRE MARSHAL'S APPROVAL.
 15. ALL WELDING SHALL BE PER NFPA 511 (2016 EDITION) AND STATE FIRE MARSHAL'S APPROVAL.
 16. ALL WELDING SHALL BE PER NFPA 511 (2016 EDITION) AND STATE FIRE MARSHAL'S APPROVAL.
 17. ALL WELDING SHALL BE PER NFPA 511 (2016 EDITION) AND STATE FIRE MARSHAL'S APPROVAL.

APPROVAL STAMPS

NO.	REVISIONS	DATE



PIPE LEGEND

	BLACK STEEL FIRE SPRINKLER PIPING
	CPVC FIRE SPRINKLER PIPING
	FIRE SPRINKLER STANDPIPE PIPING

RESIDENTIAL PENDENT SPRINKLERS IN UNITS SPACED AT A MAX OF 20'x20' (THIS FLOOR ONLY)

CEILING NOTE:
UNITS @ 8'-0"
CORRIDORS @ 8'-6"

SPRINKLER HEAD LEGEND

SYM	CNT	POSITION	FINISH	TEMP	K	SPY	SIN	MFG.	MODEL#	MAX SPACING UNITS
⊗	124	UPR	BRASS	286	14.00	3/4"	TY8137	TYCO	EC-14	14 X 14
⊙	333	PEND	WHITE	200	5.60	1/2"	TY323	TYCO	TY-FRB	15 X 15 130 S.F. OH
⊙	85	UPR	BRASS	200	5.60	1/2"	TY313	TYCO	TY-FRB	15 X 15 130 S.F. OH
⊙	18	PEND	WHITE	200	11.20	3/4"	TY237	TYCO	EC-11	20 X 20
⊗	38	UPR	BRASS	286	14.00	3/4"	TY8137	TYCO	EC-14	14 X 14
⊙	1364	PEND	WHITE	155	4.90	1/2"	TY226	TYCO	LFII	16 X 16
⊙	83	SIDE	WHITE	155	5.60	1/2"	RA1564	RELIANT	DH56	28 X 8
⊙	17	SIDE	WHITE	200	8.00	3/4"	TY4332	TYCO	TY-FRB	14 X 24
⊙	107	SIDE	BRASS	200	5.60	1/2"	TY231	TYCO	TY-FRB	14 X 14 LH 10 X 10 OH
⊙	28	PEND	WHITE	155	8.00	3/4"	TY4332	TYCO	EC-8	28 X 8
⊙	351	SIDE	WHITE	155	4.40	1/2"	TY2334	TYCO	LFII	16 X 16
⊙	88	SIDE	WHITE	155	5.80	1/2"	VK480	VIKING	FREEDOM	16 X 20
⊙	194	UPR	BRASS	200	8.00	3/4"	TY4131	TYCO	TY-FRB	15 X 15 130 S.F. OH
⊙	2738	TOTAL								

LEVEL 5 AREA B FIRE SPRINKLER PLAN
SCALE= 1/8" = 1'-0"

SPRINKLER HEAD LEGEND



FIRE PROTECTION PLAN

CANVAS APARTMENTS
2301 CALIFORNIA ST NE
MINNEAPOLIS, MN 55418

Contract No. C22-133

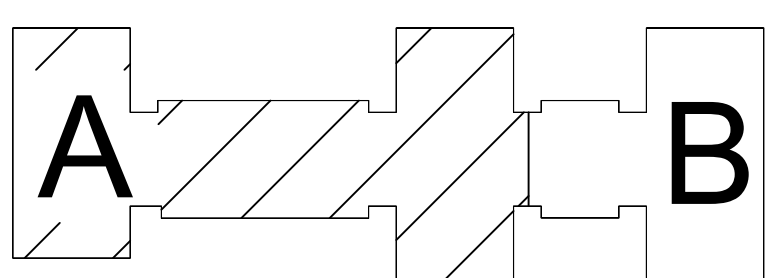
Drawing Date: 3/4/2023

Scale: 1/8" = 1'-0"

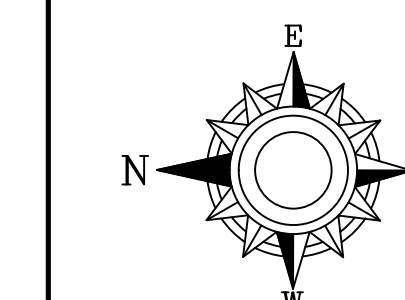
Drawn By: JVG

Approval By: STATE FIRE MARSHAL DIV.

SHEET NO. FP 11 of 13

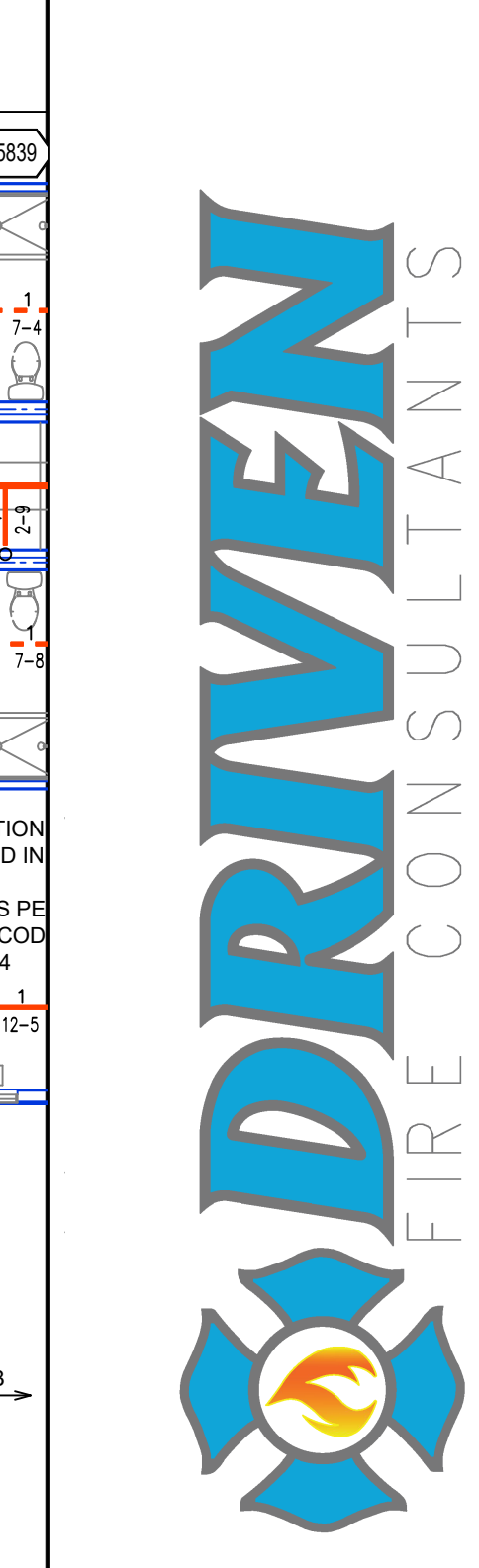


KEYPLAN



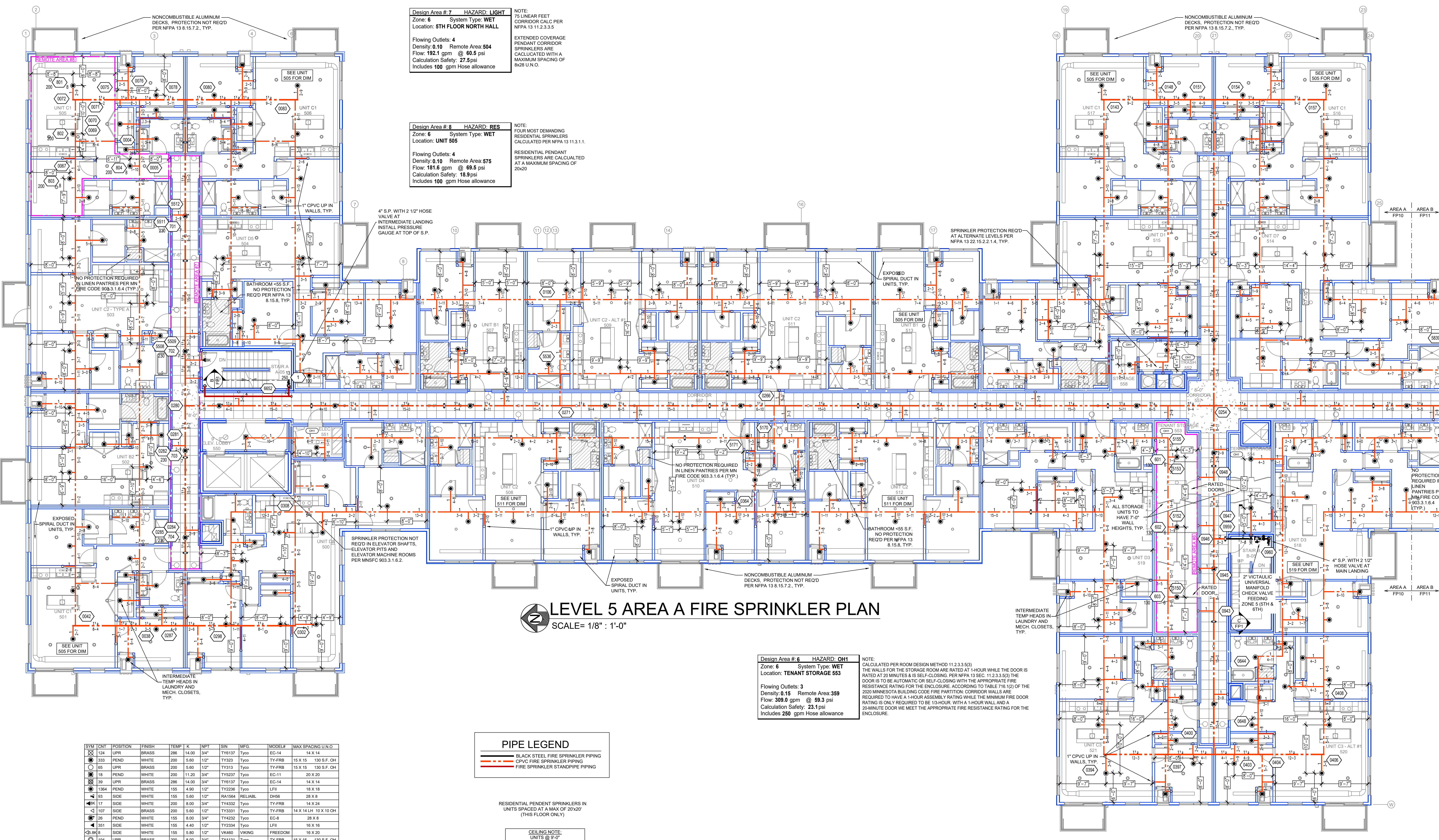
GENERAL NOTES: 1. SYSTEMS INSTALLED PER NFPA 13 (2016 EDITION) AND STATE FIRE MARSHAL. 2. ALL SPRINKLER SYSTEMS SHALL BE 1" UNLESS OTHERWISE NOTED. 3. SHORT RABBIT FITTINGS SHALL BE WELDED. 4. ALL WELDING SHALL BE PER NFPA 108.5. 5. ALL WELDING SHALL BE DONE BY A WELDER WITH APPROVED SHOP DRAWINGS. 6. CUSTOMERS USE TO BE RECALCULATED PRIOR TO FABRICATION AND INSTALLATION BY SPRINKLER CONTRACTOR. 7. HIGH TEMPERATURE HEADS ARE TO BE RECALCULATED WHERE REQUIRED. 8. HANGERS ARE TO BE INSTALLED IN ACCORDANCE WITH NFPA 13. 9. ELECTRICAL WIRING, ALARM DETECTION AND SUPERVISORY BY OWNER. 10. SUSCEPTIBLE TO DAMAGE FROM VIBRATION. 11. WET SYSTEM PIPING FROM FREEZING.

Table with columns: APPROVAL STAMPS, DATE, REVISIONS, NO.



FIRE PROTECTION PLAN
CANVAS APARTMENTS
2301 CALIFORNIA ST NE
MINNEAPOLIS, MN 55418

Contract No: C22-133
Drawing Date: 3/4/2023
Scale: 1/8" = 1'-0"
Drawn By: JVG
Approval By: STATE FIRE MARSHAL DIV.
SHEET NO: FP 10 of 13



LEVEL 5 AREA A FIRE SPRINKLER PLAN
SCALE= 1/8" : 1'-0"

Design Area # 7 HAZARD: LIGHT
Zone: 6 System Type: WET
Location: 5TH FLOOR NORTH HALL
Flowing Outlets: 4
Density: 0.10 Remote Area: 504
Flow: 192.1 gpm @ 60.5 psi
Calculation Safety: 27.5 psi
Includes 100 gpm Hose allowance

Design Area # 8 HAZARD: RES
Zone: 6 System Type: WET
Location: UNIT 505
Flowing Outlets: 4
Density: 0.10 Remote Area: 575
Flow: 181.6 gpm @ 69.5 psi
Calculation Safety: 18.9 psi
Includes 100 gpm Hose allowance

Design Area # 6 HAZARD: OH1
Zone: 6 System Type: WET
Location: TENANT STORAGE 553
Flowing Outlets: 3
Density: 0.15 Remote Area: 359
Flow: 309.0 gpm @ 59.3 psi
Calculation Safety: 23.1 psi
Includes 250 gpm Hose allowance

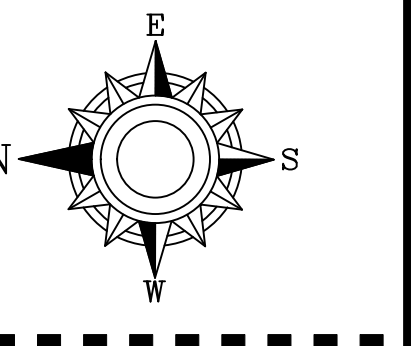
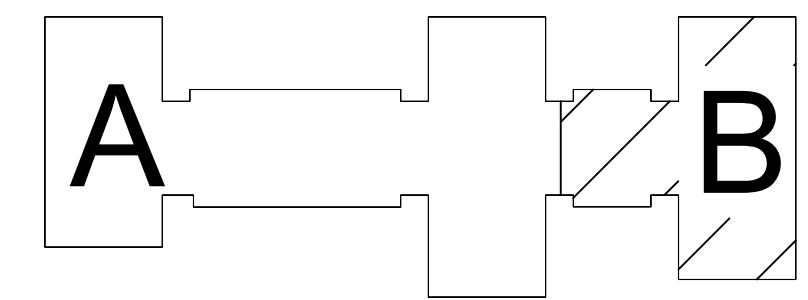


RESIDENTIAL PENDANT SPRINKLERS IN UNITS SPACED AT A MAX OF 20x20" (THIS FLOOR ONLY)

CEILING NOTE:
UNITS @ 8'-0"
CORRIDORS @ 8'-6"

Table with columns: SYM, CNT, POSITION, FINISH, TEMP, K, NPF, SIN, MFG, MODEL#, MAX SPACING U.N.O.

SPRINKLER HEAD LEGEND



KEYPLAN

CALC PLACARD

Design Area #11 HAZARD: OH2
 Zone: 2 System Type: WET
 Location: SE PRODUCTION

Flowing Outlets: 9
 Density: 0.20 Remote Area: 1125
 Flow: 503.8 gpm @ 58.4 psi
 Calculation Safety: 10.1 psi
 Includes 250 gpm Hose allowance

NOTE:
 1102 S.F. REMOTE AREA
 USED DUE TO THE USE OF
 QUICK RESPONSE
 SPRINKLERS WITH AN 18"
 CEILING HEIGHT!

- GENERAL NOTES
1. SYSTEM INSTALLED PER NFPA 13 (2016 EDITION) AND STATE FIRE MARSHAL'S APPROVED LISTING.
 2. ALL PIPING SHALL BE 1" MINIMUM PIPE SIZE UNLESS LISTED OTHERWISE.
 3. SHORT TRAP FITTINGS SHALL BE WELDED OUTLETS & GROOVED.
 4. ALL WELDING PER NFPA 514 SHALL BE PERFORMED WITHOUT APPROVED SHOP DRAWINGS.
 5. CUSTOMER SHALL BE FIELD RELEASED PRIOR TO FABRICATION AND INSTALLATION BY SPRINKLER CONTRACTOR.
 6. HIGH TEMPERATURE HEADS ARE TO BE FIELD WELDED WHERE REQUIRED.
 7. HANDS ON TO BE FIELD WELDED AND APPROVED.
 8. HANDS ON TO BE FIELD WELDED AND APPROVED.
 9. WET SYSTEM PIPING FROM FREEZING.

APPROVAL STAMPS

NO.	REVISIONS	DATE



FIRE PROTECTION PLAN

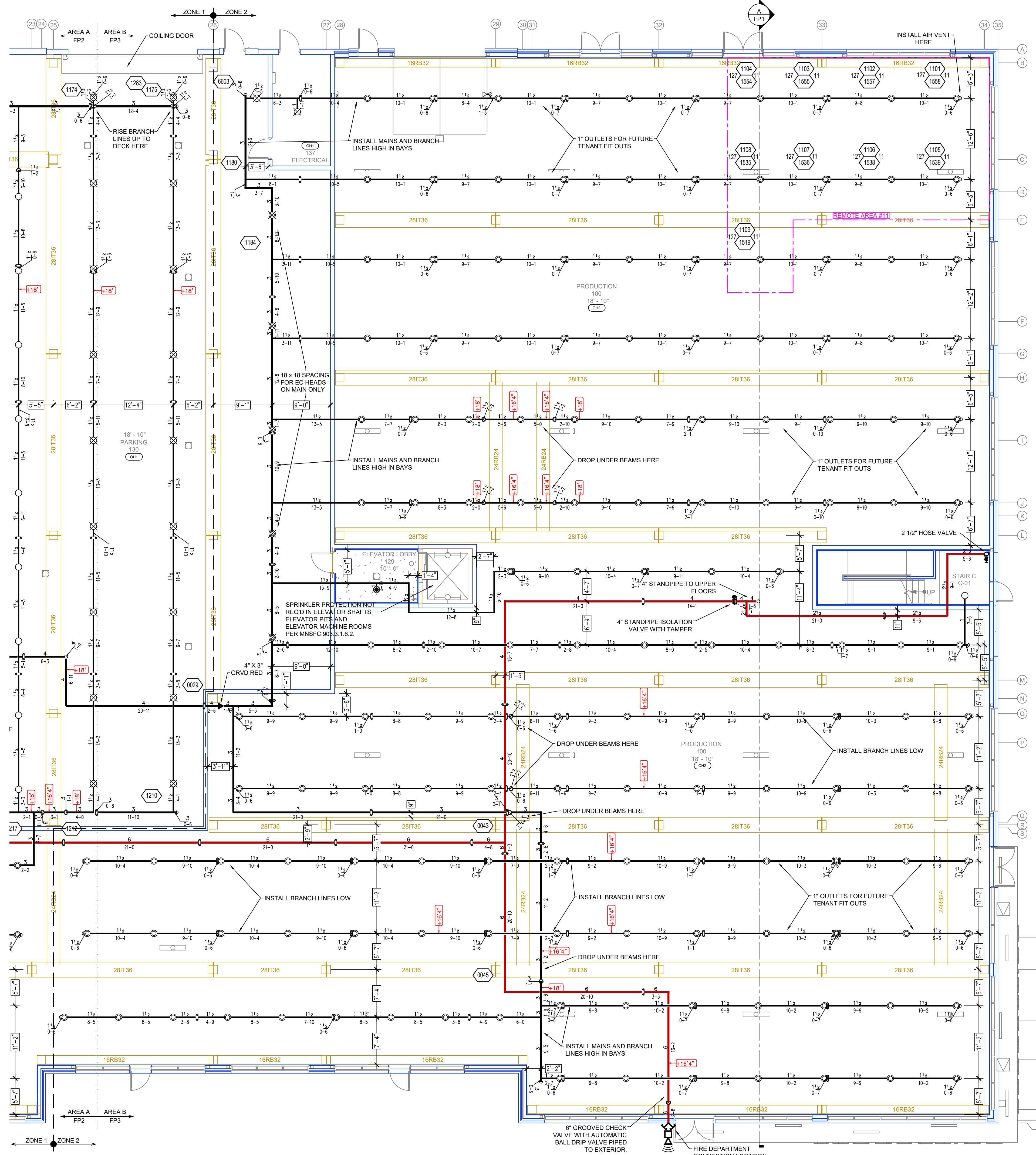
CANVAS APARTMENTS
 2301 CALIFORNIA ST NE
 MINNEAPOLIS, MN 55418

Contract No:
C22-133

Drawing Date: 3/4/2023
 Scale: 1/8" = 1'-0"

Drawn By: JVG
 Approval By: STATE FIRE MARSHAL DIV.

SHEET NO. **FP 3 of 13**



SYM	CNT	POSITION	FINISH	TEMP	K	NPT	SIN	DFGS	MODEL#	MAX SPACING L IN O
124	UPR	BRASS	286	14.00	3/4"	TY6137	Typo	EC-14	14 X 14	14 X 14
333	PEND	WHITE	200	5.60	1/2"	TY323	Typo	TY-FRB	15 X 15	130 S.F. OH
85	UPR	BRASS	200	5.60	1/2"	TY313	Typo	TY-FRB	15 X 15	130 S.F. OH
118	PEND	WHITE	200	11.20	3/4"	TY237	Typo	EC-11	20 X 20	20 X 20
139	UPR	BRASS	286	14.00	3/4"	TY6137	Typo	EC-14	14 X 14	14 X 14
1364	PEND	WHITE	155	4.90	1/2"	TY226	Typo	LFI	18 X 18	18 X 18
83	SIDE	WHITE	155	5.60	1/2"	RA1264	RELIAB	DH56	28 X 8	28 X 8
17	SIDE	WHITE	200	8.00	3/4"	TY432	Typo	TY-FRB	14 X 24	14 X 24
107	SIDE	BRASS	200	5.60	1/2"	TY331	Typo	TY-FRB	14 X 14 LH	10 X 10 OH
26	PEND	WHITE	155	8.00	3/4"	TY432	Typo	EC-8	28 X 8	28 X 8
201	SIDE	WHITE	155	4.40	1/2"	TY234	Typo	LFI	15 X 16	15 X 16
86	SIDE	WHITE	155	5.80	1/2"	VK460	VKING	FREEDOM	16 X 20	16 X 20
194	UPR	BRASS	200	8.00	3/4"	TY4131	Typo	TY-FRB	15 X 15	130 S.F. OH
2739	TOTAL									

SPRINKLER HEAD LEGEND

LEVEL 1 AREA B FIRE SPRINKLER PLAN
SCALE= 1/8" = 1'-0"

PIPE LEGEND

	BLACK STEEL FIRE SPRINKLER PIPING
	CPVC FIRE SPRINKLER PIPING
	FIRE SPRINKLER STANDPIPE PIPING

EXTENDED COVERAGE UPRIGHT SPRINKLERS IN PARKING AREA SPACED AT A MAX OF 14'X14' LIND

CEILING NOTE U.N.O.
 EXPOSED DECK @ 18'-10"
 EXPOSED BEAMS @ 16'-10"

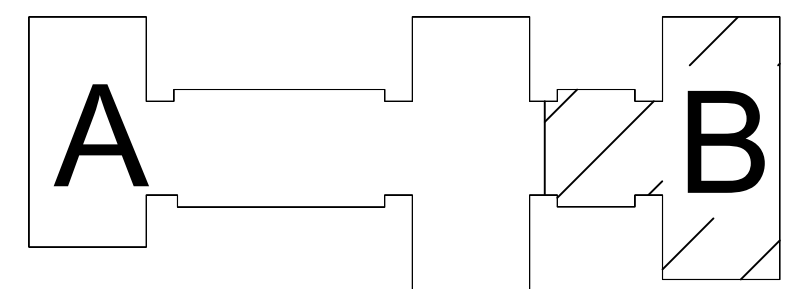
Design Area # 12 HAZARD_OH1
 Zone: 1 System Type: WET
 Location: NORTH PARKING

Flowing Outlets: 8
 Density: 0.15 Remote Area: 1175
 Flow: 566.6 gpm @ 49.7 psi
 Calculation Safety: 13.1 psi
 Includes 250 gpm Hose allowance

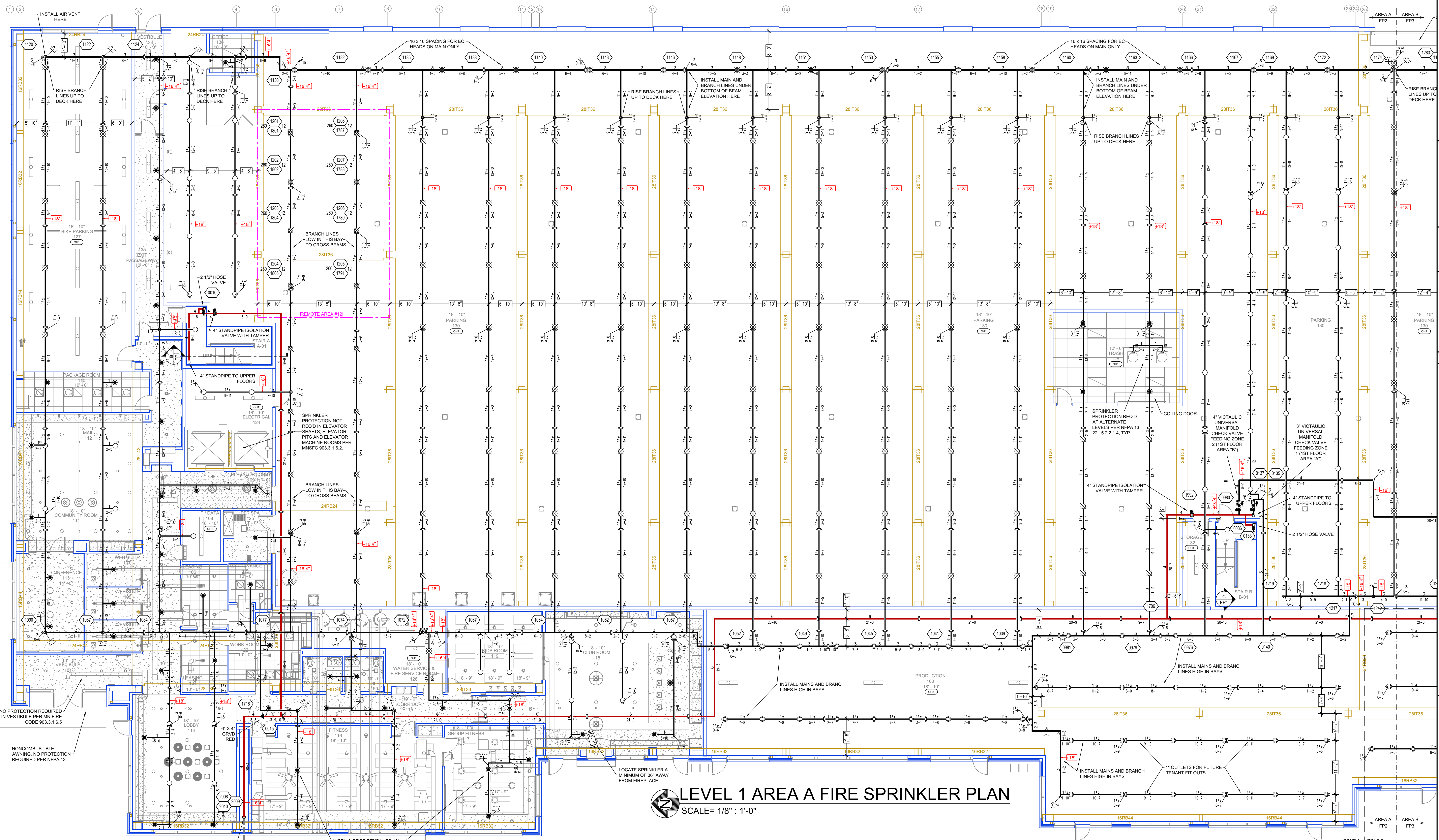
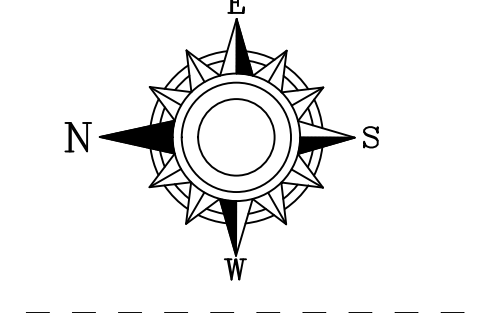
NOTE:
 1102 S.F. REMOTE AREA
 USED DUE TO THE USE OF
 QUICK RESPONSE
 SPRINKLERS WITH AN 18"
 CEILING HEIGHT

EXTENDED COVERAGE
 UPRIGHT SPRINKLERS
 ARE CALCULATED AT A
 MAXIMUM SPACING OF
 14x14

GRID PEAKED



KEYPLAN



LEVEL 1 AREA A FIRE SPRINKLER PLAN
 SCALE = 1/8" = 1'-0"

SYM	QTY	POSITION	FINISH	TEMP	K	NPT	SN	MFG	MODEL#	MAX SPACING U X O
124	UPR	BRASS	286	14.00	34"	TY9157	TY90	EC-14	EC-14	14 X 14
133	PEND	WHITE	200	5.60	1/2"	TY303	TY90	TY-FRB	15 X 15	130 S.F. OH
85	UPR	BRASS	200	5.60	1/2"	TY313	TY90	TY-FRB	15 X 15	130 S.F. OH
18	PEND	WHITE	200	11.20	3/4"	TY3237	TY90	EC-11	EC-11	20 X 20
39	UPR	BRASS	286	14.00	3/4"	TY8137	TY90	EC-14	EC-14	14 X 14
1384	PEND	WHITE	155	4.40	1/2"	TY2236	TY90	LFH	LFH	18 X 18
80	SIDE	WHITE	155	5.60	1/2"	RY1564	RELIANT	SH96	SH96	28 X 8
17	SIDE	WHITE	200	8.00	3/4"	TY4332	TY90	TY-FRB	TY-FRB	14 X 24
107	SIDE	BRASS	200	5.60	1/2"	TY3331	TY90	TY-FRB	14 X 14	10 X 10 OH
26	PEND	WHITE	155	8.00	3/4"	TY4232	TY90	EC-8	EC-8	28 X 8
351	SIDE	WHITE	155	4.40	1/2"	TY2334	TY90	LFH	LFH	16 X 16
88	SIDE	WHITE	155	5.60	1/2"	VK460	Viking	FREEDOM	FREEDOM	16 X 20
184	UPR	BRASS	200	8.00	3/4"	TY4131	TY90	TY-FRB	15 X 15	130 S.F. OH
279	TOTAL									

PIPE LEGEND

- BLACK STEEL FIRE SPRINKLER PIPING
- CPVC FIRE SPRINKLER PIPING
- FIRE SPRINKLER STANDPIPE PIPING

EXTENDED COVERAGE UPRIGHT SPRINKLERS IN PARKING AREA SPACED AT A MAX OF 14'X14' UNO

CEILING NOTE U.N.O. EXPOSED DECK @ 18'-10" EXPOSED BEAMS @ 16'-10"

GENERAL NOTES

- SYSTEM INSTALLED PER NFPA 13 CODE EDITION AND STATE FIRE MARSHAL'S OFFICE APPROVED LISTED U.L. LISTED MINIMUM PIPE SIZE SHALL BE 1" NOMINAL PIPE SIZE UNLESS OTHERWISE NOTED.
- SHORT RISE FITTINGS SHALL BE WELDED OUTLETS & GROOVED END CONNECTIONS.
- ALL WELDING PER NFPA 54 & 58 TO BE PERFORMED WITHOUT APPROVED SHOP DRAWINGS.
- CONDUITS SHALL BE PERMITTED PRIOR TO FABRICATION AND INSTALLATION BY SPRINKLER CONTRACTOR.
- HIGH TEMPERATURE HEADS ARE TO BE FIELD CALIBRATED WHERE REQUIRED.
- HEADS ARE TO BE FIELD CALIBRATED BY APPROVED WRENCH HOUSE OR TO BE FIELD CALIBRATED BY APPROVED WRENCH HOUSE.
- ELECTRICAL WORK, ALARM DETECTION AND SUPERVISORY BY OWNER.
- WET TEST PIPING FROM FREEZING.

APPROVAL STAMPS

NO.	DATE	REVISIONS

FIRE PROTECTION PLAN

DRIVEN
 FIRE CONSULTANTS

910 N. SYCAMORE AVENUE, STROCK FALLS, SD 57110 PHONE: (605) 444-9290

CANVAS APARTMENTS
 2301 CALIFORNIA ST NE
 MINNEAPOLIS, MN 55418

Contract No: **C22-133**
 Drawing Date: 3/4/2023
 Scale: 1/8" = 1'-0"
 Drawn By: JVG
 Approval By: STATE FIRE MARSHAL DIV.
 SHEET NO. **FP 2 of 13**