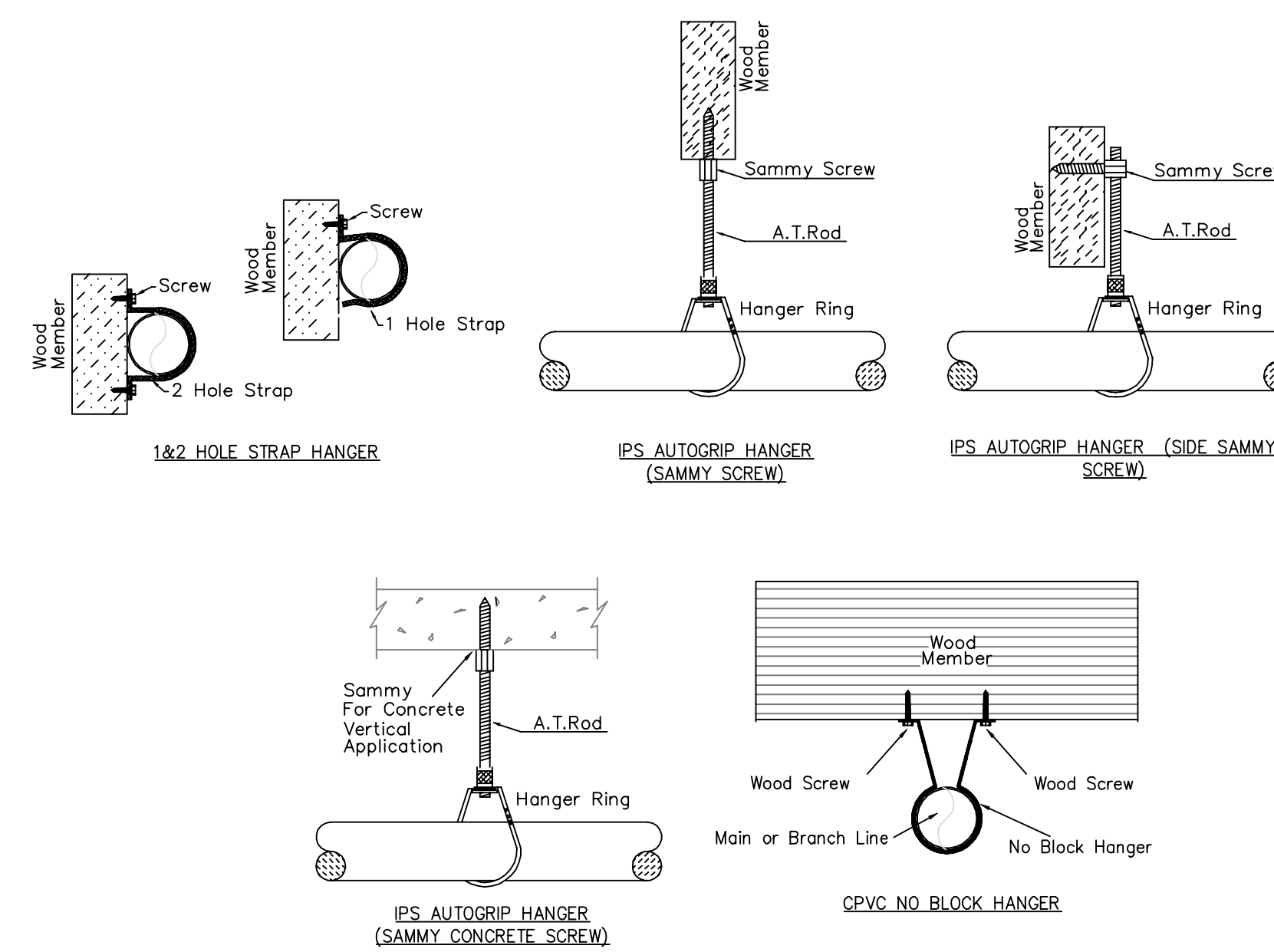


GENERAL NOTES

- INTERNATIONAL BUILDING CODE (2018)
 - OCCUPANCY: S-2, R-2
 - TYPE OF CONSTRUCTION: I-A, V-A
 - SPRINKLERED AREAS (APPROXIMATE - SEE ARCHITECTURAL PLANS FOR ACTUAL)
 - PARKING = 37,746 S.F. (ZONE 1) - NFPA-13
 - FIRST FLOOR = 30,894 S.F. (ZONE 2)
 - SECOND FLOOR = 30,894 S.F. (ZONE 2)
 - THIRD FLOOR = 30,894 S.F. (ZONE 2) - NFPA-13R
 - FOURTH FLOOR = 30,894 S.F. (ZONE 2)
 - TOTAL = 161,362 S.F.
- INSTALLATION STANDARDS:
 - SPRINKLER SYSTEM DESIGNED AND INSTALLED PER NFPA-13, NFPA-13R, NFPA-14, NFPA-20 (2016)
- SPRINKLER PIPE TYPES:
 - 1" TO 2" PIPING TO BE BLAZEMASTER CPVC PIPING WITH CEMENTED FITTINGS
 - 1" BRANCH LINES TO BE BLK THREADED LIGHTWALL PIPING WITH THREADED FITTINGS
 - 1-1/4" THROUGH 4" MAIN & BRANCH LINES TO BE BLK LIGHTWALL PIPING WITH GROOVED FITTINGS
- DESIGN CRITERIA
 - ROOMS, CORRIDORS, LOBBIES, AND SIMILAR AREAS CLASSIFIED LIGHT HAZARD AREAS DESIGNED TO DELIVER 0.10 GPM/S.F. OVER THE MOST DEMANDING 1500 S.F.
 - PARKING GARAGE, STORAGE UNITS AND MECHANICAL ROOMS CLASSIFIED ORDINARY HAZARD GROUP 1 AREAS DESIGNED TO DELIVER 0.15 GPM/S.F. OVER THE MOST DEMANDING 1500 S.F.
 - REMOTE AREA REDUCTIONS HAVE BEEN TAKEN WHERE APPLICABLE PER NFPA 13 SEC. 11.2.3.2.3
- NOTES:
 - ALL MATERIAL TO BE NEW AND MEET U.L. STANDARDS
 - HANGERS TO BE INSTALLED IN ACCORDANCE WITH NFPA 13 (2016) - SEE PLAN FOR HANGING REQUIREMENTS
- SYMBOLS USED ON DRAWINGS:
 - 6.937 PIPE ELEVATION A.F.F.
 - 6.172 PIPE ELEVATION BELOW B.O.D.
 - OH1 ROOM HAZARD CLASSIFICATION (ALL ROOMS ARE CONSIDERED LIGHT HAZARD UNLESS NOTED)
 - HYDRAULIC CALCULATION JUNCTION POINT
 - 8'-0" CEILING HEIGHT
- SCOPE OF WORK:
 - NEW APARTMENT BUILDING INSTALLED BY PER THE 2018 IBC, 2018 ND STATE BUILDING CODE AND 2016 NFPA 13. LEVEL 1 IS PROTECTED TO ORDINARY HAZARD GROUP 1. RESIDENTIAL AREAS ARE PROTECTED TO LIGHT HAZARD AND RESIDENTIAL CRITERIA PER NFPA 13R. ALL AREAS OF THE BUILDING TO BE INSTALLED AND COVERED IN ACCORDANCE WITH THE LOCAL AUTHORITY HAVING JURISDICTION AND PER NFPA 13 OR 13R (2016)

	MAXIMUM DISTANCE BETWEEN HANGERS (FT.-IN.)									
	NOMINAL PIPE SIZE (IN.)									
STEEL PIPE EXCEPT THREADED LIGHTWALL	3/4"	1"	1 1/2"	1 3/4"	2"	2 1/2"	3"	4"	6"	8"
THREADED LIGHTWALL STEEL PIPE	NA	12-0	12-0	15-0	15-0	15-0	15-0	15-0	15-0	15-0
BLAZEMASTER CPVC	5-6	6-0	6-6	7-0	8-0	9-0	10-0	NA	NA	NA

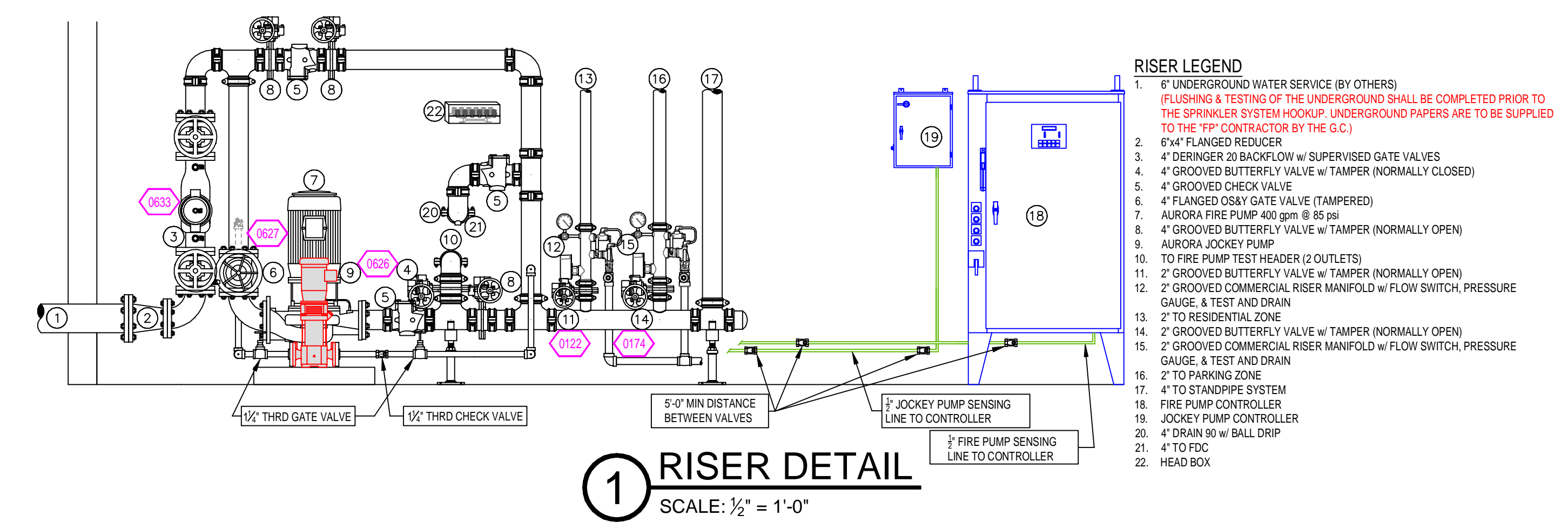
NFPA 13 HANGER SPACING



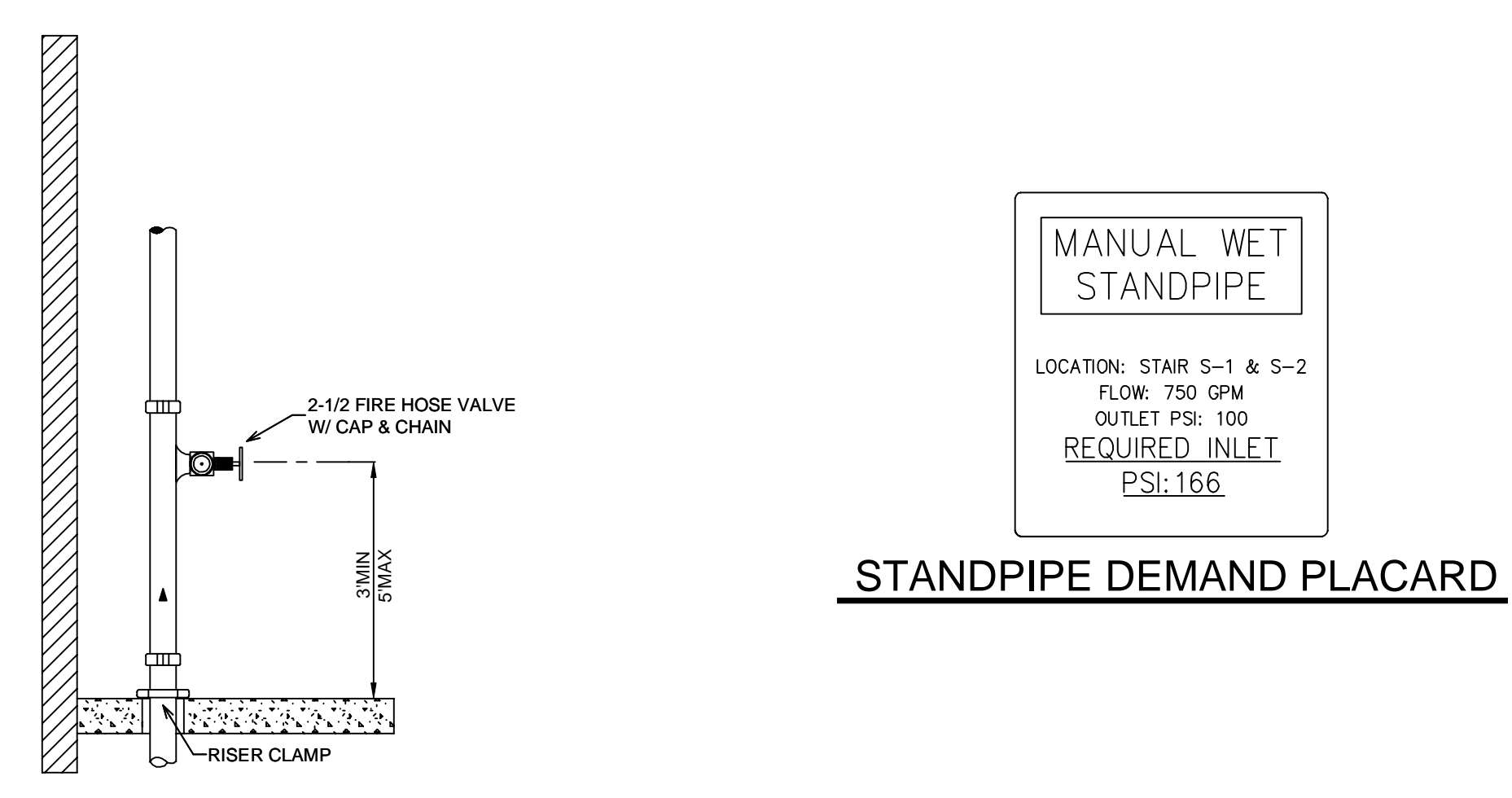
HANGER DETAILS

SYM	QNT	POSITION	FINISH	TEMP	K	WPT	SIN	MFG	MODEL#	ESCUTCHEON
13	13	UPRIGHT	BRASS	200	5.60	1/2"	VK300	VIKING	MICROFAST	N/A
13	13	SIDEWALL	WHITE	200	11.20	3/4"	TY6332	TYCO	ELOBWD20	SEMI-RECESS
13	13	UPRIGHT	BRASS	200	14.00	3/4"	VK570	VIKING	VKEC	N/A
13	13	SIDEWALL	CHROME	200	5.60	1"	VK182	VIKING	VK DRY	STANDARD
13	13	SIDEWALL	WHITE	155	4.00	1/2"	VK488	VIKING	FREEDOM	SEMI-RECESS
13	13	SIDEWALL	WHITE	155	8.00	3/4"	VK360	VIKING	VK	SEMI-RECESS
13	13	SIDEWALL	WHITE	200	5.60	1/2"	VK305	VIKING	MICROFAST	SEMI-RECESS
25	25	PENDENT	WHITE	155	5.60	1/2"	VK302	VIKING	MICROFAST	SEMI-RECESS
158	158	SPRIG	BRASS	200	5.60	1/2"	VK300	VIKING	MICROFAST	N/A
24	24	SPRIG	BRASS	200	14.00	3/4"	VK570	VIKING	VKEC	N/A
2	2	PENDENT	WHITE	155	5.60	1/2"	VK960	VIKING	WINDOW	N/A

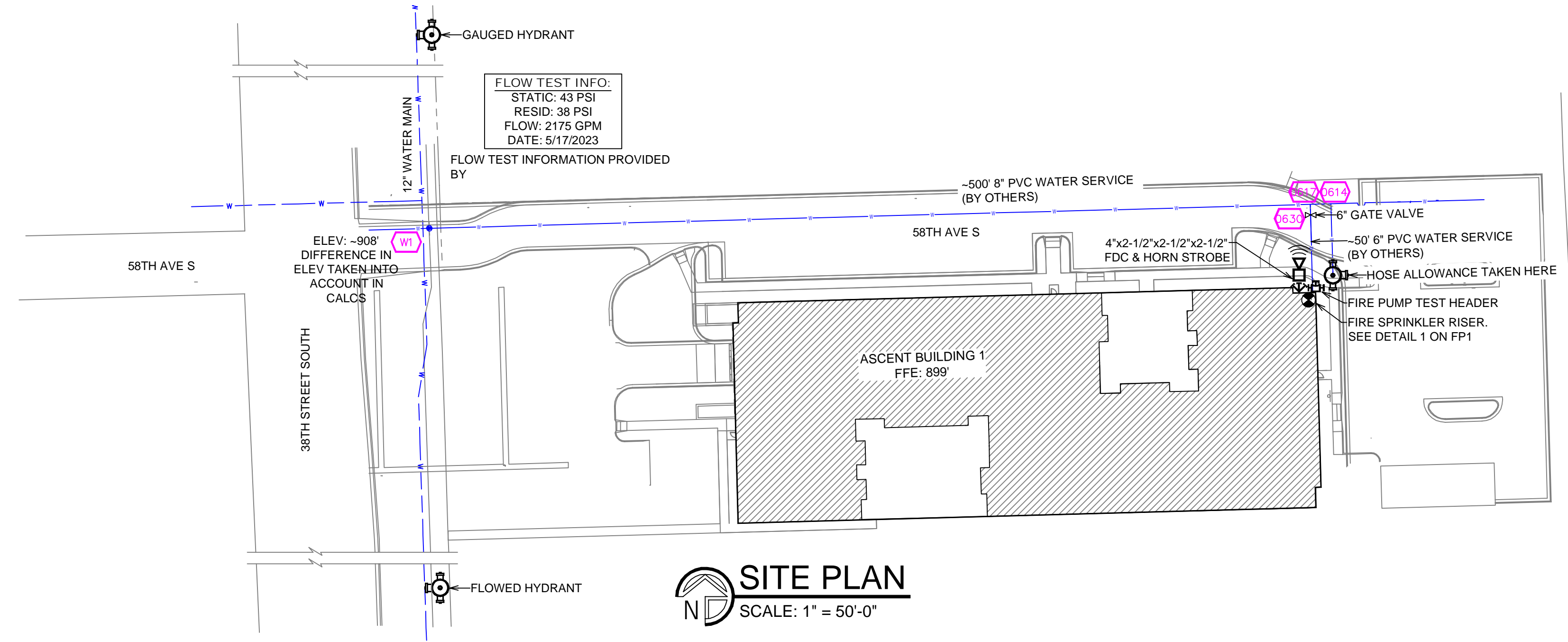
SPRINKLER HEAD LEGEND



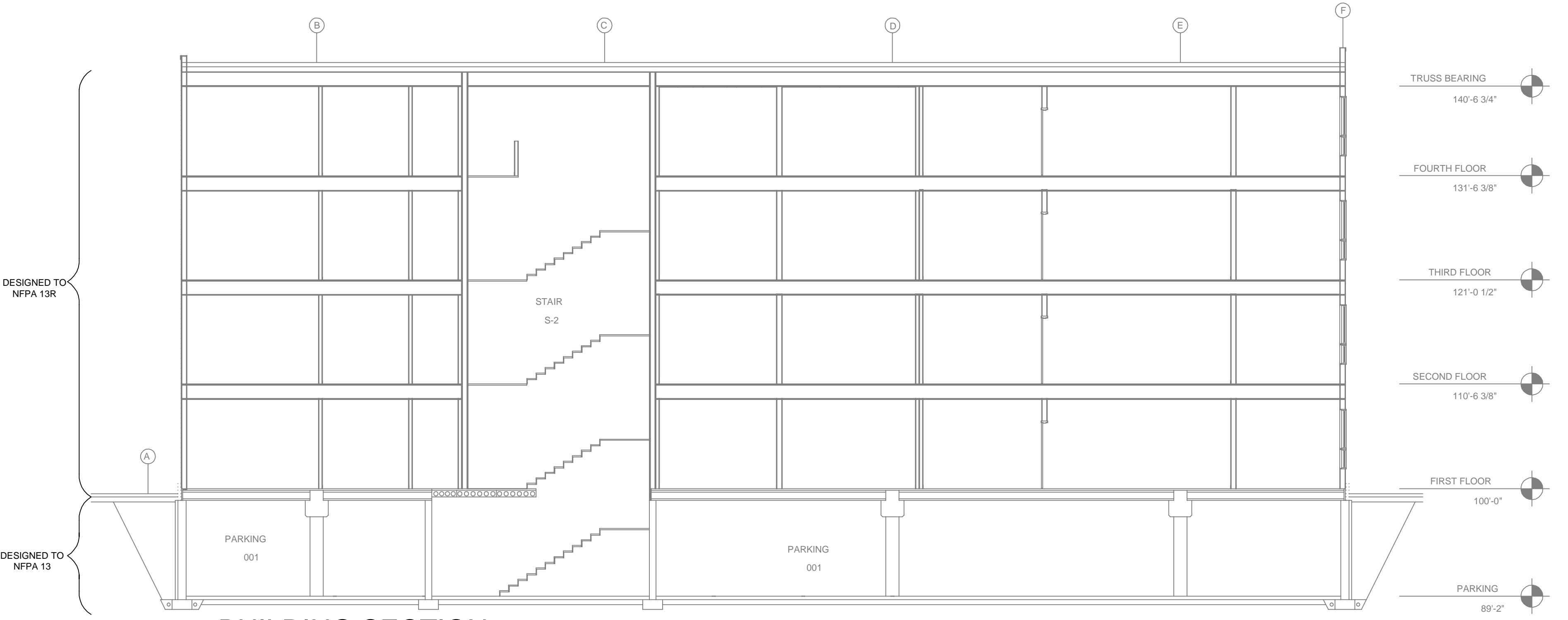
1 RISER DETAIL
SCALE: 1/2" = 1'-0"



STAIR S-1 & S-2 SP DETAILS

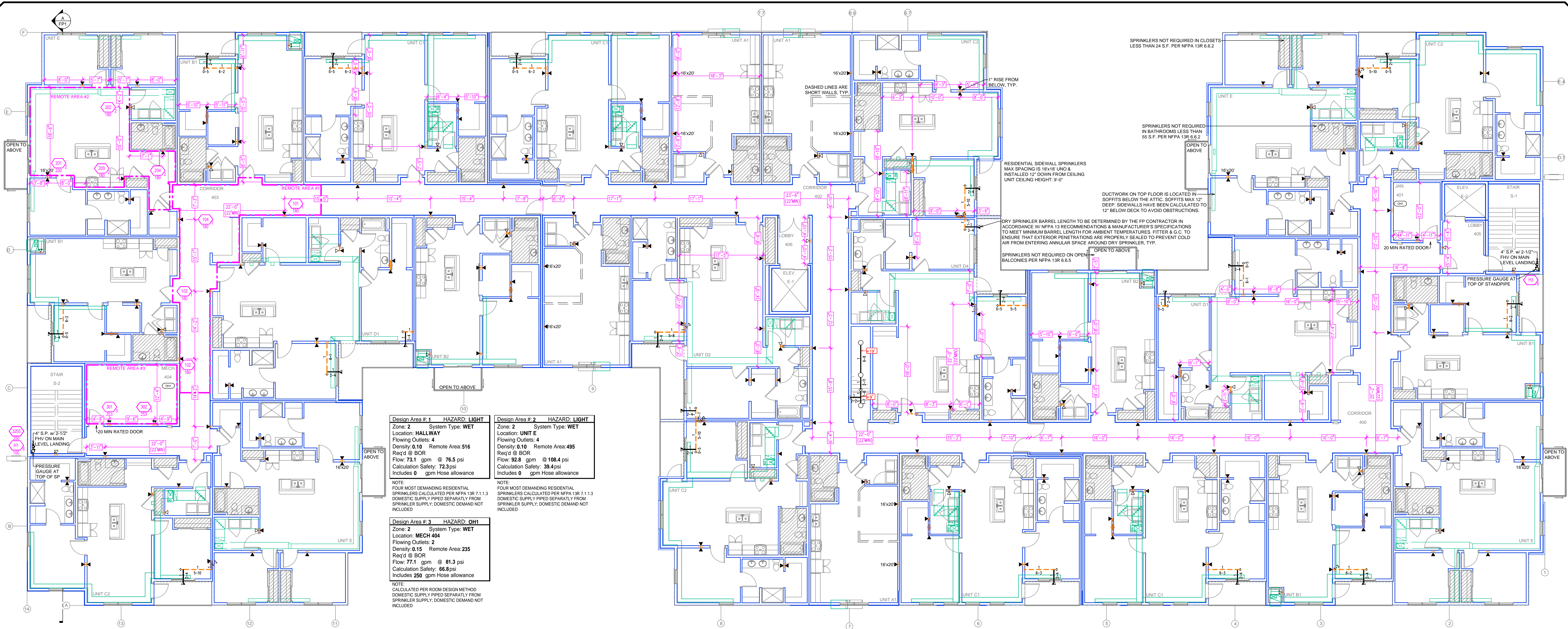


SITE PLAN
SCALE: 1" = 50'-0"



A BUILDING SECTION
SCALE: 1/8" = 1'-0"

<p>ASCENT BUILDING 1 5800 38TH ST S FARGO, ND 58102</p>		<p>Drawing Title FIRE PROTECTION PLAN</p>	<p>REVISIONS</p>	<p>SYMBOLS</p>
<p>Project No.</p>	<p>Drawn By DVG</p>	<p>Scale 1/8" = 1'</p>	<p>Date 9/18/2023</p>	<p>DWG Type SUBMITTAL DWG</p>



Design Area #1 HAZARD: LIGHT
 Zone: 2 System Type: WET
 Location: HALLWAY
 Flowing Outlets: 4
 Density: 0.10 Remote Area: 516
 Req'd @ BOR
 Flow: 73.1 gpm @ 76.5 psi
 Calculation Safety: 72.3 psi
 Includes 0 gpm Hose allowance
 NOTE: FOUR MOST DEMANDING RESIDENTIAL SPRINKLERS CALCULATED PER NFPA 13R 7.1.1.3 DOMESTIC SUPPLY PIPED SEPARATELY FROM SPRINKLER SUPPLY; DOMESTIC DEMAND NOT INCLUDED

Design Area #2 HAZARD: LIGHT
 Zone: 2 System Type: WET
 Location: UNIT E
 Flowing Outlets: 4
 Density: 0.10 Remote Area: 495
 Req'd @ BOR
 Flow: 92.8 gpm @ 108.4 psi
 Calculation Safety: 93.4 psi
 Includes 0 gpm Hose allowance
 NOTE: FOUR MOST DEMANDING RESIDENTIAL SPRINKLERS CALCULATED PER NFPA 13R 7.1.1.3 DOMESTIC SUPPLY PIPED SEPARATELY FROM SPRINKLER SUPPLY; DOMESTIC DEMAND NOT INCLUDED

Design Area #3 HAZARD: OH1
 Zone: 2 System Type: WET
 Location: MECH 404
 Flowing Outlets: 2
 Density: 0.15 Remote Area: 235
 Req'd @ BOR
 Flow: 77.1 gpm @ 81.3 psi
 Calculation Safety: 66.8 psi
 Includes 250 gpm Hose allowance
 NOTE: CALCULATED PER ROOM DESIGN METHOD DOMESTIC SUPPLY PIPED SEPARATELY FROM SPRINKLER SUPPLY; DOMESTIC DEMAND NOT INCLUDED

4TH FLOOR FIRE PROTECTION PLAN
 SCALE: 1/8" = 1'-0"

SYM	CNT	POSITION	FINISH	TEMP	K	RPT	SN	DRG	MODEL#	ESCUTCHECK
160	1	UPRIGHT	BRASS	200	5.60	1/2"	VK300	VIKING	MICROFAST	N/A
13	1	SIDEWALL	WHITE	200	11.20	3/4"	TY5332	TYCO	ELOSW20	SEMI-RECESS
13	1	UPRIGHT	BRASS	200	14.00	3/4"	VK570	VIKING	VKEC	N/A
98	1	SIDEWALL	CHROME	200	5.60	1"	VK182	VIKING	VK-DRY	STANDARD
160	1	SIDEWALL	WHITE	155	4.00	1/2"	VK486	VIKING	FREEDOM	SEMI-RECESS
13	1	SIDEWALL	WHITE	155	8.00	3/4"	VK360	VIKING	VK	SEMI-RECESS
131	1	SIDEWALL	WHITE	200	5.60	1/2"	VK305	VIKING	MICROFAST	SEMI-RECESS
25	1	PENDENT	WHITE	155	5.60	1/2"	VK302	VIKING	MICROFAST	SEMI-RECESS
158	1	SPRIG	BRASS	200	5.60	1/2"	VK300	VIKING	MICROFAST	N/A
24	1	SPRIG	BRASS	200	14.00	3/4"	VK570	VIKING	VKEC	N/A
2	1	PENDENT	WHITE	155	5.60	1/2"	VK360	VIKING	WINDOW	N/A

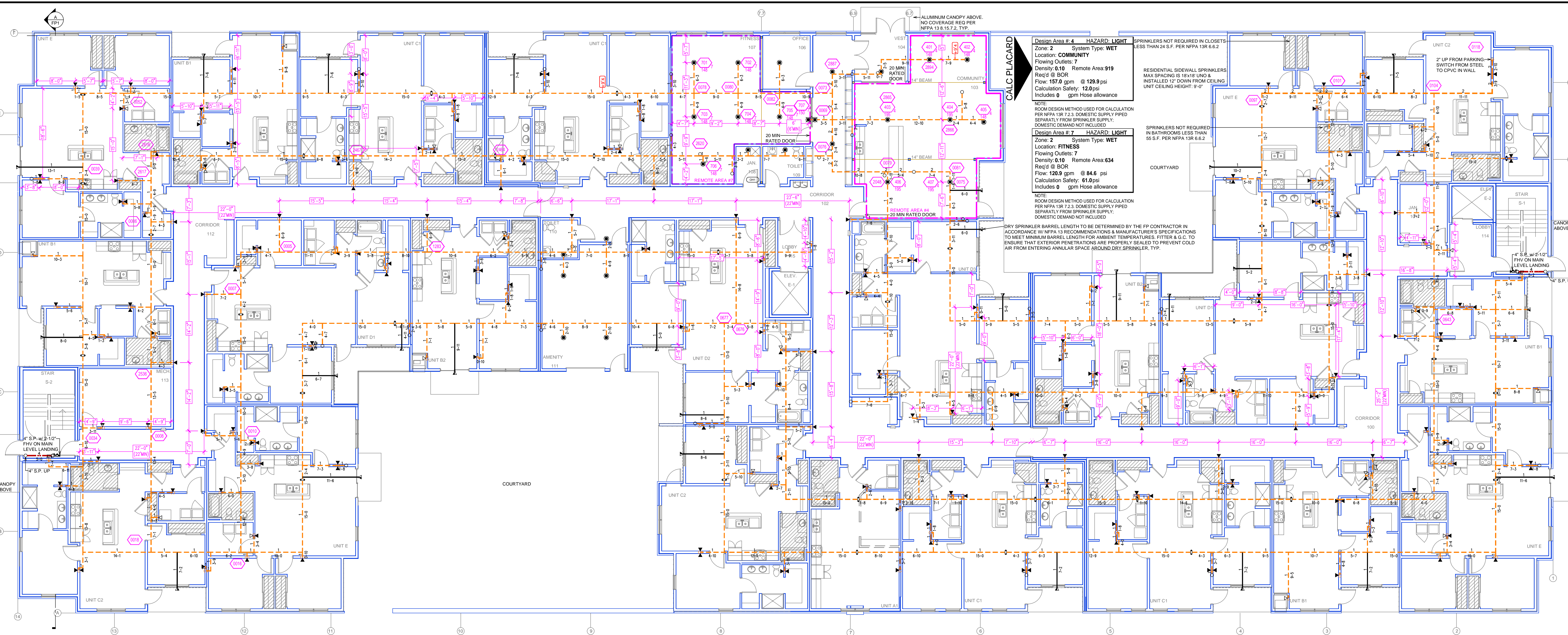
SPRINKLER HEAD LEGEND

PIPE LEGEND

	BLACK STEEL FIRE SPRINKLER PIPING
	CPVC FIRE SPRINKLER PIPING
	FIRE SPRINKLER STANDPIPE PIPING

ASCENT BUILDING 1
 5800 38TH ST S | FARGO, ND 58102

Drawing Title FIRE PROTECTION PLAN	REVISIONS <table border="1"> <tr><th>No.</th><th>Description</th></tr> <tr><td> </td><td> </td></tr> <tr><td> </td><td> </td></tr> <tr><td> </td><td> </td></tr> </table>	No.	Description																		
No.		Description																			
Project No.																					
Drawn By DVG																					
Scale 1/8" = 1'																					
Date 9/18/2023	SYMBOLS <table border="1"> <tr><th>Symbol</th><th>Description</th></tr> <tr><td>15'-4"</td><td>Ceiling Height</td></tr> <tr><td>16'-0"</td><td>Elev. Below Top of Steel</td></tr> <tr><td>16'-0"</td><td>Elev. Above Finished Floor</td></tr> <tr><td>(H)</td><td>Hydraulic Reference Points</td></tr> <tr><td>(C)</td><td>Common Connection Point</td></tr> <tr><td>(H)</td><td>Denotes Hanger Location</td></tr> <tr><td>(U)</td><td>Rise up or down</td></tr> <tr><td>(E)</td><td>Electrical Light</td></tr> <tr><td>(OH1)</td><td>Room Hazard Classification</td></tr> </table>	Symbol	Description	15'-4"	Ceiling Height	16'-0"	Elev. Below Top of Steel	16'-0"	Elev. Above Finished Floor	(H)	Hydraulic Reference Points	(C)	Common Connection Point	(H)	Denotes Hanger Location	(U)	Rise up or down	(E)	Electrical Light	(OH1)	Room Hazard Classification
Symbol		Description																			
15'-4"	Ceiling Height																				
16'-0"	Elev. Below Top of Steel																				
16'-0"	Elev. Above Finished Floor																				
(H)	Hydraulic Reference Points																				
(C)	Common Connection Point																				
(H)	Denotes Hanger Location																				
(U)	Rise up or down																				
(E)	Electrical Light																				
(OH1)	Room Hazard Classification																				
DWG Type SUBMITTAL DWG																					



1ST FLOOR FIRE PROTECTION PLAN
 SCALE: 1/8" = 1'-0"

SYM	QTY	POSITION	FINISH	TEMP	K	RPT	SN	DRG	MODEL#	ESCUTCHEON
160	1	UPRIGHT	BRASS	200	5.60	1/2"	VK300	VIKING	MICROFAST	N/A
13	13	SIDEWALL	WHITE	200	11.20	3/4"	TY5332	TYCO	ELOSW20	SEM-RECESS
13	13	UPRIGHT	BRASS	200	14.00	3/4"	VK570	VIKING	VKEC	N/A
98	98	SIDEWALL	CHROME	200	5.60	1"	VK182	VIKING	VK-DRY	STANDARD
1850	1850	SIDEWALL	WHITE	155	4.00	1/2"	VK486	VIKING	FREEDOM	SEM-RECESS
8	8	SIDEWALL	WHITE	155	8.00	3/4"	VK360	VIKING	VK	SEM-RECESS
131	131	SIDEWALL	WHITE	200	5.60	1/2"	VK306	VIKING	MICROFAST	SEM-RECESS
25	25	PENDENT	WHITE	155	5.60	1/2"	VK302	VIKING	MICROFAST	SEM-RECESS
158	158	SPRIG	BRASS	200	5.60	1/2"	VK300	VIKING	MICROFAST	N/A
24	24	SPRIG	BRASS	200	14.00	3/4"	VK570	VIKING	VKEC	N/A
2	2	PENDENT	WHITE	155	5.60	1/2"	VK360	VIKING	WINDOW	N/A
1387 TOTAL HEADS										

SPRINKLER HEAD LEGEND

PIPE LEGEND	
	BLACK STEEL FIRE SPRINKLER PIPING
	CPVC FIRE SPRINKLER PIPING
	FIRE SPRINKLER STANDPIPE PIPING

ALUMINUM CANOPY ABOVE
 NO COVERAGE REQ PER
 NFPA 13B.15.7.2, TYP.

HAZARD: LIGHT
 Zone: 2 System Type: WET
 Location: COMMUNITY
 Flowing Outlets: 7
 Density: 0.10 Remote Area: 919
 Req'd @ BOR
 Flow: 157.0 gpm @ 129.9 psi
 Calculation Safety: 12.0 psi
 Includes 0 gpm Hose allowance

HAZARD: LIGHT
 Zone: 2 System Type: WET
 Location: FITNESS
 Flowing Outlets: 7
 Density: 0.10 Remote Area: 634
 Req'd @ BOR
 Flow: 120.9 gpm @ 84.6 psi
 Calculation Safety: 61.0 psi
 Includes 0 gpm Hose allowance

NOTE:
 ROOM DESIGN METHOD USED FOR CALCULATION
 PER NFPA 13R 7.2.3 DOMESTIC SUPPLY PIPED
 SEPARATELY FROM SPRINKLER SUPPLY;
 DOMESTIC DEMAND NOT INCLUDED.

NOTE:
 ROOM DESIGN METHOD USED FOR CALCULATION
 PER NFPA 13R 7.2.3 DOMESTIC SUPPLY PIPED
 SEPARATELY FROM SPRINKLER SUPPLY;
 DOMESTIC DEMAND NOT INCLUDED.

NOTE:
 DRY SPRINKLER BARREL LENGTH TO BE DETERMINED BY THE FP CONTRACTOR IN
 ACCORDANCE W/ NFPA 13 RECOMMENDATIONS & MANUFACTURER'S SPECIFICATIONS
 TO MEET MINIMUM BARREL LENGTH FOR AMBIENT TEMPERATURES. FITTER & G. TO
 ENSURE THAT EXTERIOR PENETRATIONS ARE PROPERLY SEALED TO PREVENT COLD
 AIR FROM ENTERING ANNULAR SPACE AROUND DRY SPRINKLER, TYP.

RESIDENTIAL SIDEWALL SPRINKLERS
 MAX SPACING IS 18" UNO &
 INSTALLED 12" DOWN FROM CEILING
 UNIT CEILING HEIGHT: 9'-0"

SPRINKLERS NOT REQUIRED IN CLOSETS
 LESS THAN 24 S.F. PER NFPA 13R 6.6.2

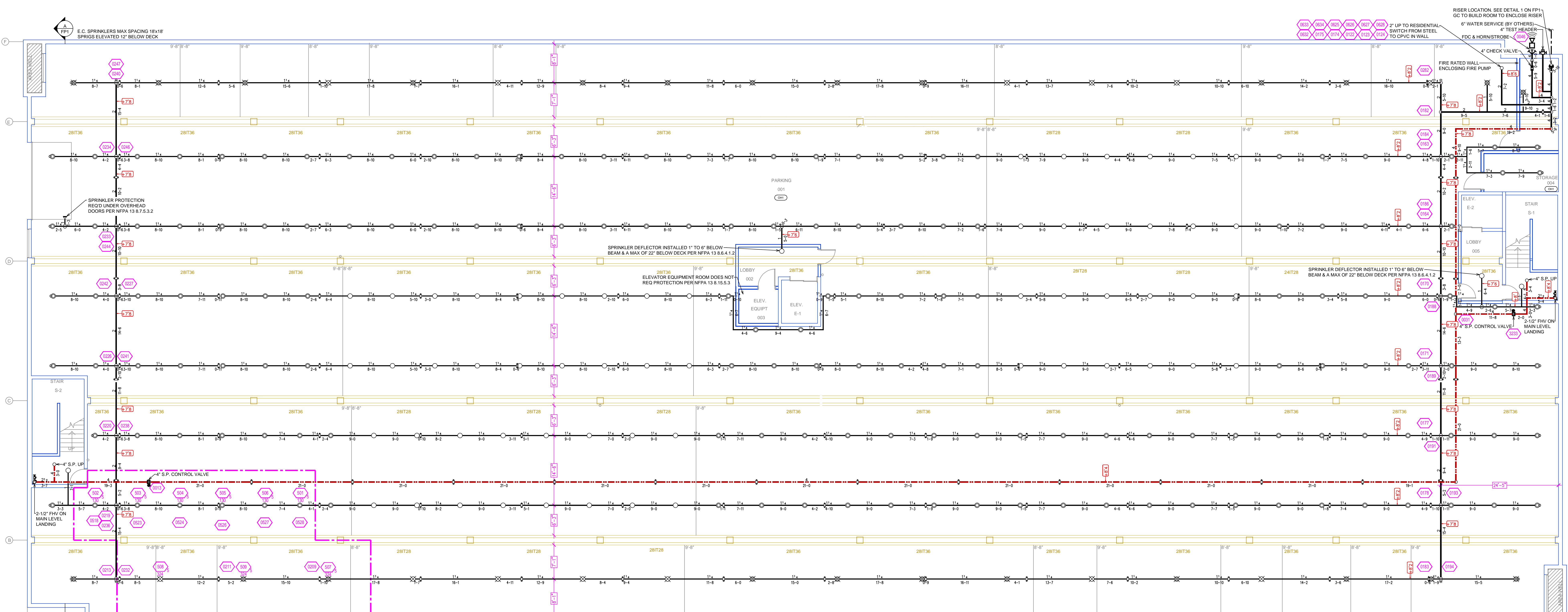
2" UP FROM PARKING
 SWITCH FROM STEEL
 TO CPVC IN WALL

4" S.P. w/ 2 1/2" FHV ON MAIN LEVEL LANDING

4" S.P. UP

ASCENT BUILDING 1
 5800 38TH ST S | FARGO, ND 58102

Drawing Title FIRE PROTECTION PLAN Project No. Drawn By DVG Scale 1/8" = 1' Date 9/18/2023 DWG Type SUBMITTAL DWG	REVISIONS <table border="1"> <tr><th>No.</th><th>Description</th></tr> <tr><td> </td><td> </td></tr> <tr><td> </td><td> </td></tr> <tr><td> </td><td> </td></tr> </table>	No.	Description							SYMBOLS <table border="1"> <tr><th>Symbol</th><th>Description</th></tr> <tr><td></td><td>Elev. Below Top of Steel</td></tr> <tr><td></td><td>Elev. Above Finished Floor</td></tr> <tr><td></td><td>Hydraulic Reference Point</td></tr> <tr><td></td><td>Common Connection Point</td></tr> <tr><td></td><td>Denotes Hanger Location</td></tr> <tr><td></td><td>Rise up or down</td></tr> <tr><td></td><td>Electrical Light</td></tr> <tr><td></td><td>Room Hazard Classification</td></tr> </table>	Symbol	Description		Elev. Below Top of Steel		Elev. Above Finished Floor		Hydraulic Reference Point		Common Connection Point		Denotes Hanger Location		Rise up or down		Electrical Light		Room Hazard Classification
No.	Description																											
Symbol	Description																											
	Elev. Below Top of Steel																											
	Elev. Above Finished Floor																											
	Hydraulic Reference Point																											
	Common Connection Point																											
	Denotes Hanger Location																											
	Rise up or down																											
	Electrical Light																											
	Room Hazard Classification																											



CALC PLACARD

Design Area #: 5 HAZARD: OH1
 Zone: 1 System Type: WET
 Location: PARKING
 Flowing Outlets: 9
 Density: 0.15 Remote Area: 1571
 Req'd @ BOR
 Flow: 300.3 gpm @ 91.0 psi
 Calculation Safety: 33.4 psi
 Includes 250 gpm Hose allowance

NOTE:
 1500 S.F. REMOTE AREA NOT REDUCED DUE TO THE USE OF E.C. SPRINKLERS.
 DOMESTIC SUPPLY PIPED SEPARATELY FROM SPRINKLER SUPPLY; DOMESTIC DEMAND NOT INCLUDED

PARKING FIRE PROTECTION PLAN
 SCALE: 1/8" = 1'-0"

SYM	CNT	POSITION	FINISH	TEMP	K	RPT	SN	DRG	MODEL#	DESC/CHECK
160	UPRIGHT	BRASS	200	5.60	1/2"	VK300	VIKING	MICROFAST	N/A	
13	SIDEWALL	WHITE	200	11.20	3/4"	TY5332	TYCO	ELOSVD20	SEMI-RECESS	
13	UPRIGHT	BRASS	200	14.00	3/4"	VK570	VIKING	VKEC	N/A	
98	SIDEWALL	CHROME	200	5.60	1"	VK182	VIKING	VK-DRY	STANDARD	
180	SIDEWALL	WHITE	155	4.00	1/2"	VK486	VIKING	FREEDOM	SEMI-RECESS	
8	SIDEWALL	WHITE	155	8.00	3/4"	VK360	VIKING	VK	SEMI-RECESS	
131	SIDEWALL	WHITE	200	5.60	1/2"	VK305	VIKING	MICROFAST	SEMI-RECESS	
25	PENDENT	WHITE	155	5.60	1/2"	VK302	VIKING	MICROFAST	SEMI-RECESS	
158	SPRIG	BRASS	200	5.60	1/2"	VK300	VIKING	MICROFAST	N/A	
24	SPRIG	BRASS	200	14.00	3/4"	VK570	VIKING	VKEC	N/A	
2	PENDENT	WHITE	155	5.60	1/2"	VK360	VIKING	WINDOW	N/A	

1387 TOTAL HEADS

SPRINKLER HEAD LEGEND

PIPE LEGEND

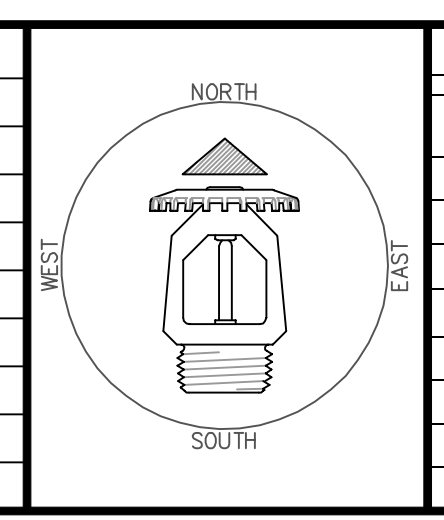
- BLACK STEEL FIRE SPRINKLER PIPING
- CPVC FIRE SPRINKLER PIPING
- FIRE SPRINKLER STANDPIPE PIPING

ASCENT BUILDING 1
 5800 38TH ST S | FARGO, ND 58102

Drawing Title: FIRE PROTECTION PLAN
 Project No.:
 Drawn By: DVG
 Scale: 1/8" = 1'
 Date: 9/8/2023
 DWG Type: SUBMITTAL DWG

REVISIONS

No.	Description



SYMBOLS

Symbol	Description
15'-4"	Ceiling Height
EW	Elev. Below Top of Steel
EF	Elev. Above Finished Floor
HA	Hydraulic Reference Points
CC	Common Connection Point
HL	Denotes Hanger Location
U/D	Rise up or down
EL	Electrical Light
OH1	Room Hazard Classification