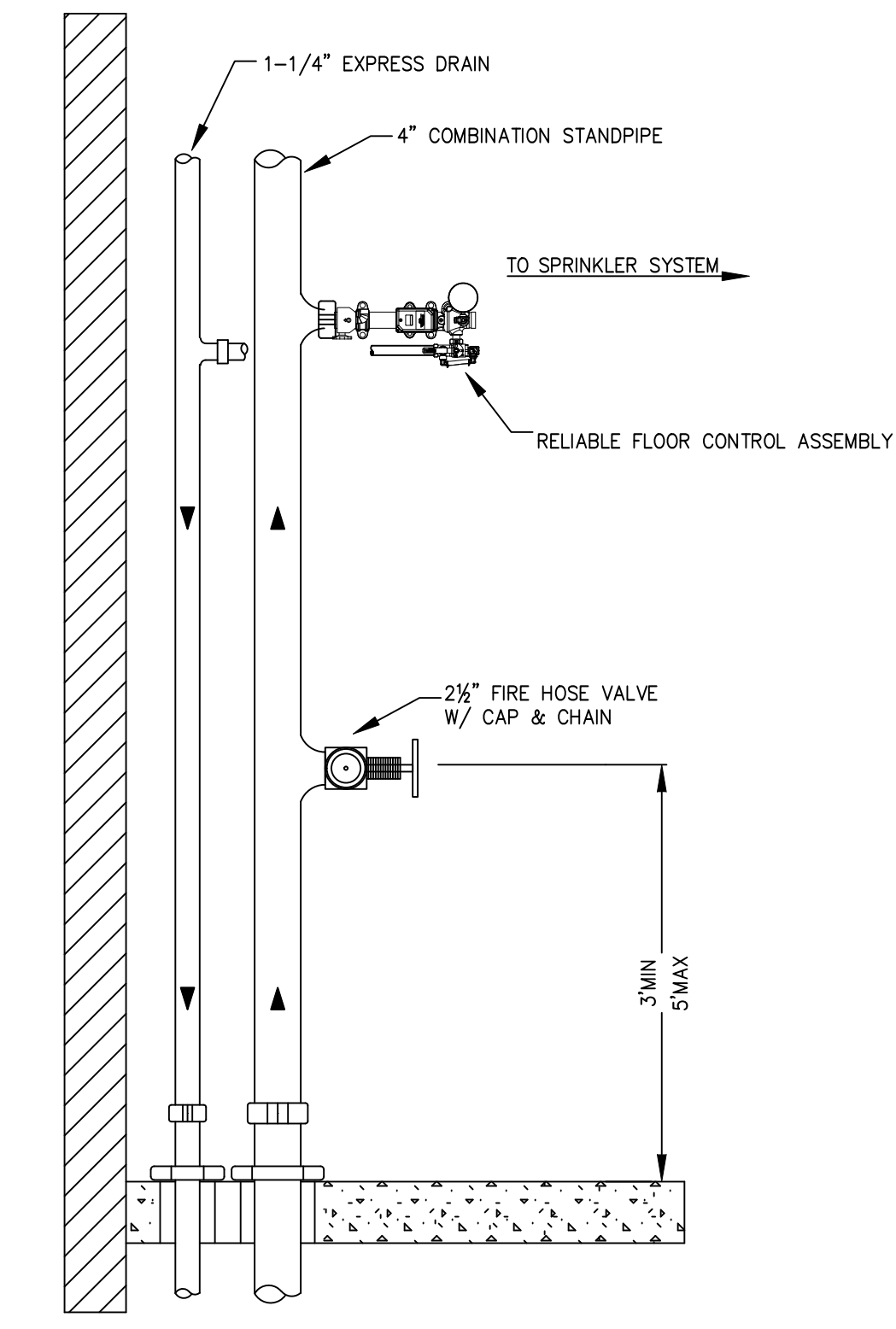
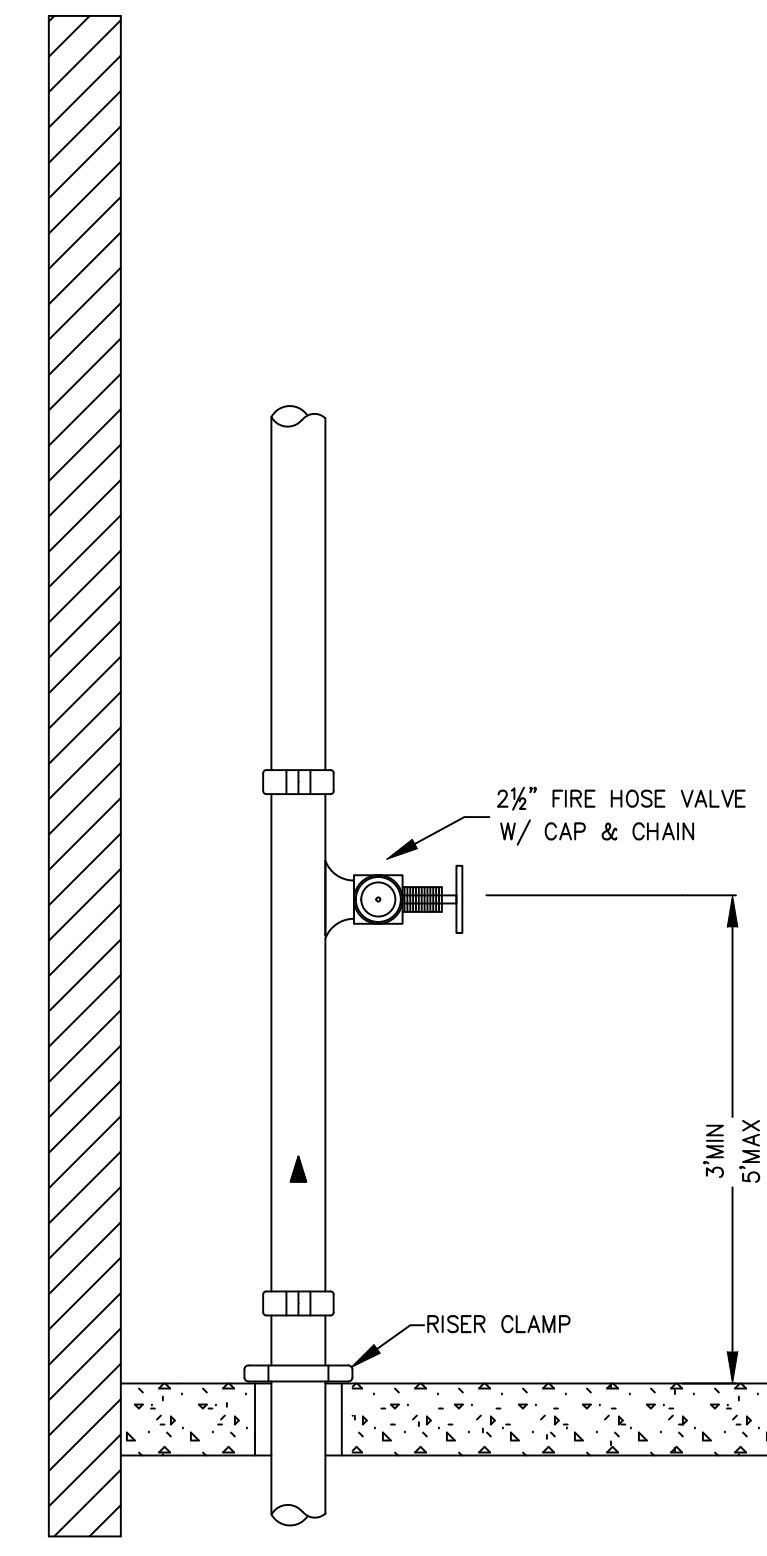


**GENERAL NOTES**

- INTERNATIONAL BUILDING CODE (2015)
  - OCCUPANCY: R-1, R-2, 2 BIA-3, S-2
  - TYPE OF CONSTRUCTION: IIB
  - SPRINKLERED AREAS (APPROXIMATE - SEE ARCHITECTURAL PLANS FOR ACTUAL)
    - P2 (ZONE 1 DRY) = 24,969 S.F.
    - P1 (ZONE 2 DRY) = 24,918 S.F.
    - LVL 1 (ZONE 1 WET) = 15,001 S.F.
    - LVL 1 (ZONE 2 DRY) = 4,373 S.F.
    - LVL 2 (ZONE 2 WET) = 21,795 S.F.
    - LVL 3 (ZONE 3 WET) = 21,795 S.F.
    - LVL 4 (ZONE 4 WET) = 21,795 S.F.
    - LVL 5 (ZONE 5 WET) = 21,795 S.F.
    - LVL 6 (ZONE 6 WET) = 21,795 S.F.
    - LVL 7 (ZONE 7 WET) = 22,000 S.F.
    - LVL 8 (ZONE 8 WET) = 16,000 S.F.
    - LVL 9 (ZONE 9 WET) = 1,278 S.F.
    - TOTAL = 205,101 S.F.
  - INSTALLATION STANDARDS:
    - SPRINKLER SYSTEM DESIGNED AND INSTALLED PER NFPA-13, NFPA-14, (2016)
- SPRINKLER PIPE TYPES:
  - WET:
    - 1" BRANCH LINES TO BE SPEARS CPVC PIPING WITH CEMENTED FITTINGS
    - 1/2" THROUGH 3" MAIN & BRANCH LINES TO BE SPEARS CPVC PIPING WITH CEMENTED FITTINGS
    - 1" BRANCH LINES TO BE BLK SCHEDULE 40 PIPING WITH THREADED FITTINGS
    - 1/2" BRANCH LINES TO BE BLK LIGHTWALL PIPING WITH GROOVED FITTINGS
    - 1/4" THROUGH 6" MAIN & BRANCH LINES TO BE BLK SCHEDULE 10 PIPING WITH GROOVED FITTINGS
  - DRY & PRE-ACTION:
    - 1" BRANCH LINES TO BE BLK SCH 40 PIPING WITH THREADED FITTINGS
    - 1/2" BRANCH LINES TO BE BLK SCH 10 PIPING WITH GROOVED FITTINGS
    - 1/4" THROUGH 6" MAIN & BRANCH LINES TO BE BLK LIGHTWALL PIPING WITH GROOVED FITTINGS
- DESIGN CRITERIA
  - LOBBY, CORRIDOR ASSEMBLY, RESIDENTIAL AND SIMILAR TO BE LIGHT HAZARD
  - PARKING, STORAGE, DELIVERY, COMMERCIAL KITCHEN COMMERCIAL LAUNDRY, LUGGAGE AND LINEN STORAGE, HOUSEKEEPING, MECHANICAL AND SIMILAR TO BE ORDINARY HAZARD GROUP 1
  - REMOTE AREA REDUCTIONS HAVE BEEN TAKEN WHERE APPLICABLE PER NFPA 13 SEC. 11.2.3.2.3
- NOTES:
  - ALL MATERIAL TO BE NEW AND MEET U.L. STANDARDS
  - HANGERS TO BE INSTALLED IN ACCORDANCE WITH NFPA 13 (2016) - SEE PLAN FOR HANGING REQ.
  - DRY SYSTEM PIPE SLOPE INSTALLATION:
    - SPRINKLER MAINS TO BE 1/8" PER 10 FEET
    - SPRINKLER BRANCH LINES TO BE 1/2" PER 10 FEET
  - DRY SYSTEM CAPACITY:
    - 4.4.1. ZONE 1 340 GAL.
    - 4.4.2. ZONE 2 436 GAL.
- SYMBOLS USED ON DRAWINGS:
  - PIPE ELEVATION A.F.F.
  - PIPE ELEVATION BELOW B.O.D.
  - ROOM HAZARD CLASSIFICATION (ALL ROOMS ARE CONSIDERED LIGHT HAZARD UNLESS NOTED)
  - HYDRAULIC CALCULATION JUNCTION POINT
  - CEILING HEIGHT
  - 4 WAY SEISMIC BRACE
  - 2 WAY SEISMIC BRACE
- SCOPE OF WORK:
  - ALL AREAS OF THE BUILDING TO BE INSTALLED AND COVERED IN ACCORDANCE WITH THE LOCAL AUTHORITY HAVING JURISDICTION AND PER NFPA 13 (2016)



**TYPICAL STANDPIPE w/ ZONE CONTROL**  
STAIR #1

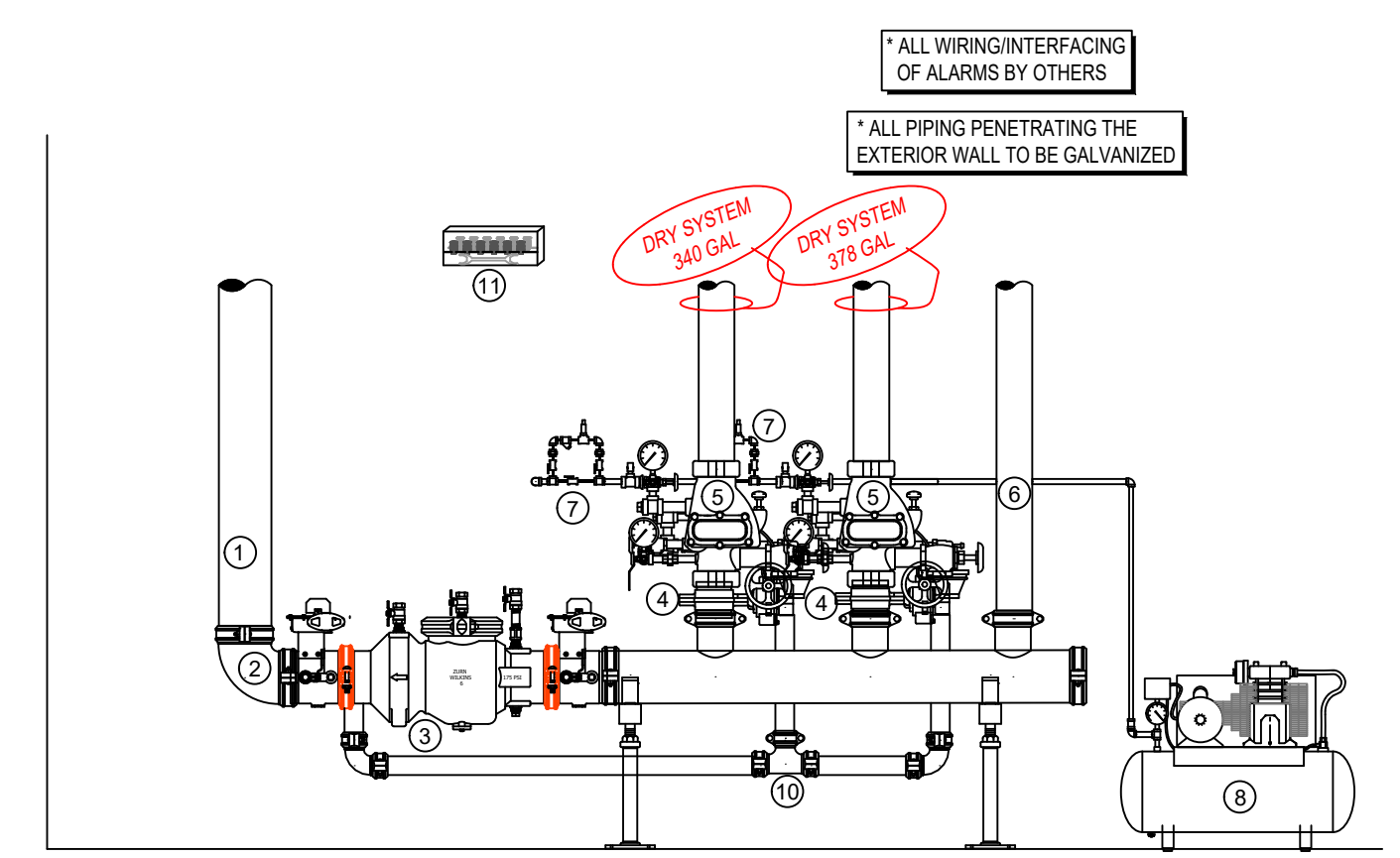


**TYPICAL STANDPIPE**  
STAIR #2



**A BUILDING SECTION**  
SCALE: 1/8" = 1'-0"

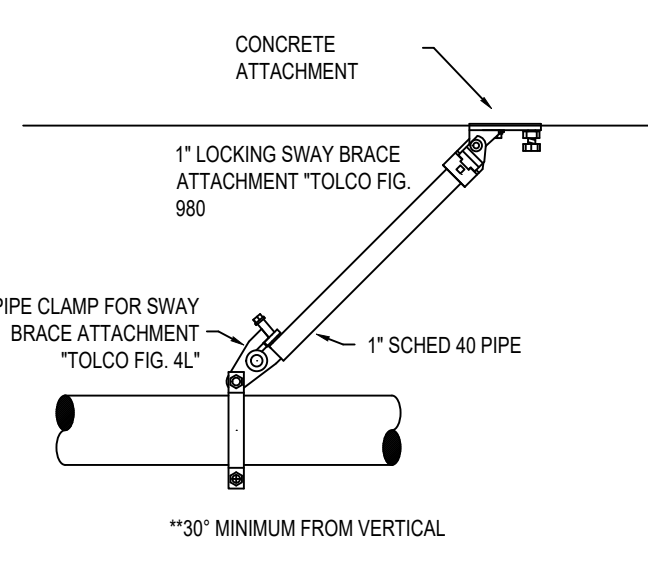
- RISER LEGEND**
- 6" UNDERGROUND WATER SERVICE (BY OTHERS) (FLUSHING & TESTING OF THE UNDERGROUND SHALL BE COMPLETED PRIOR TO THE SPRINKLER SYSTEM HOOKUP. UNDERGROUND PAPERS ARE TO BE SUPPLIED TO THE "FP" CONTRACTOR BY THE U.G.C.)
  - 6" GROOVED 90 (BY OTHERS)
  - 6" GROOVED DCDA
  - 4" GROOVED BUTTERFLY VALVE w/ TAMPER
  - 4" TYCO DPV-1 w/ TRIM
  - 4" GROOVED TO FDC AND STANDPIPES
  - AIR MAINTENANCE DEVICE
  - COMPRESSOR SIZED TO SYSTEM
  - PIPE STAND
  - 2" MAIN DRAIN PIPED TO OUTSIDE
  - HEADBOX w/ HEADWRENCH



**MANUAL WET STANDPIPE**  
LOCATION: 4TH FLOOR STAIR #1&2  
REQUIRED FLOW: 750GPM  
OUTLET PSI: 100  
REQUIRED INLET PSI: 168.1

**STANDPIPE DEMAND**

**1 RISER DETAIL**  
SCALE: 1/2" = 1'-0"



**SEISMIC DETAILS**

NFPA 13 STEEL PIPE HANGER SPACING (EXCEPT LIGHT WALL THRD PIPING)			
NOMINAL SIZE inches	MAX SPACING feet		
1"	12'-0"		
1-1/4"	12'-0"		
1-1/2"	15'-0"		
2"	15'-0"		
2-1/2"	15'-0"		
3"	15'-0"		
4" & LARGER	15'-0"		

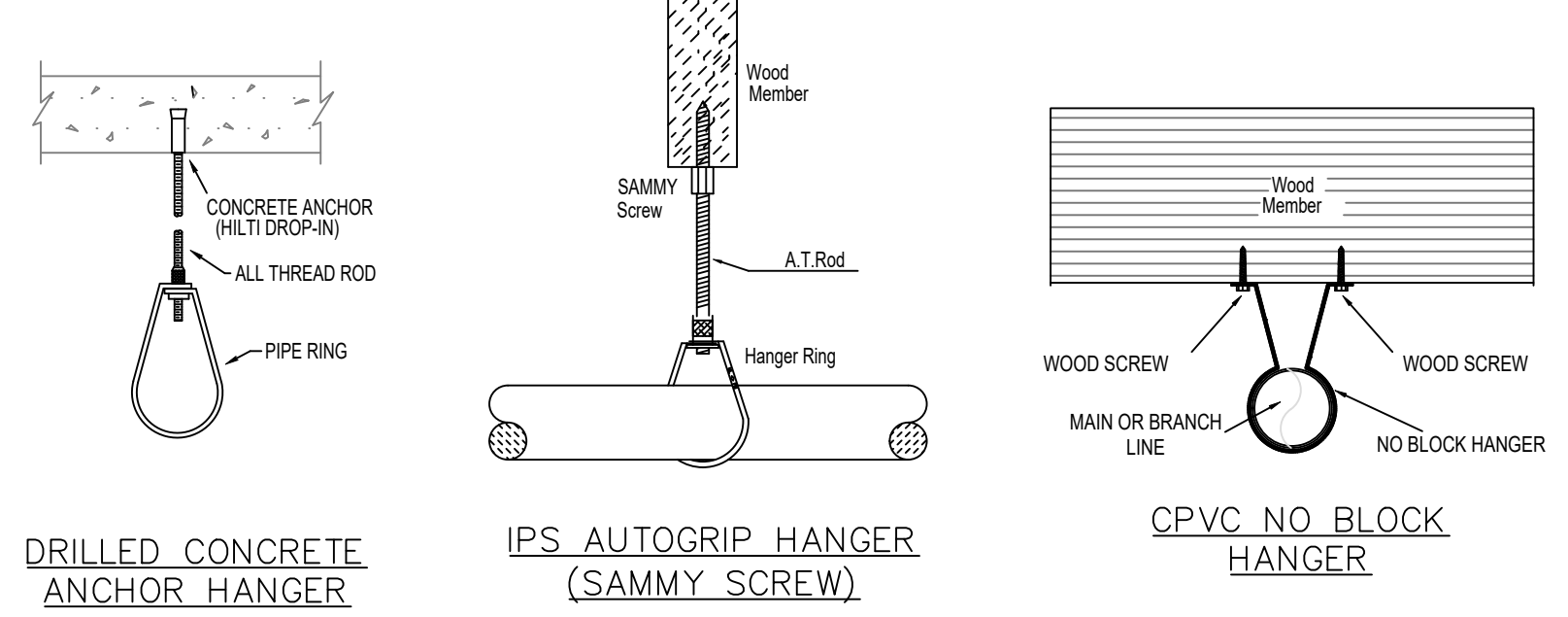
NFPA 13 CPVC PIPE HANGER SPACING			
NOMINAL SIZE inches	MAX SPACING feet		
3/4"	5'-0"		
1"	6'-0"		
1-1/4"	6'-0"		
1-1/2"	7'-0"		
2"	8'-0"		
2-1/2"	9'-0"		
3"	10'-0"		

**TIDYPIPE LEGEND**

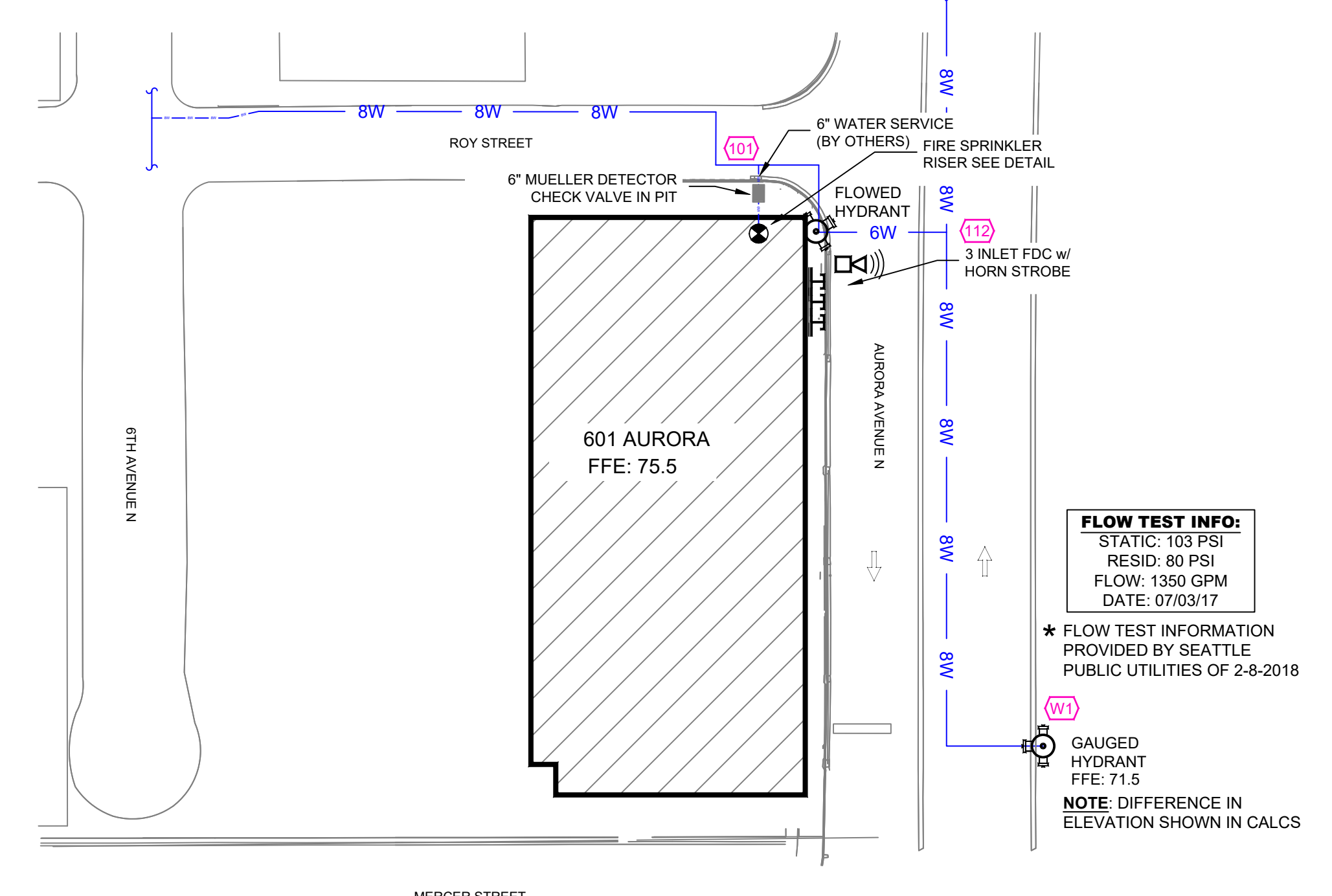
- WET SYSTEM BLACK STEEL PIPING
- DRY SYSTEM GALV. STEEL PIPING
- CPVC BLAZEMASTER PIPING

SYM	CNT	POSITION	FINISH	TEMP	K	NPT	SIN	MPG	MODEL#	ESLUTCHECK
201	PENDENT	WHITE	212	5.60	1/2"	RA3415	RELIABLE	GS	CONCEALED	
174	PENDENT	WHITE	165	4.90	1/2"	RA6616	RELIABLE	RFC	CONCEALED	
356	SIDEWALL	WHITE	165	4.20	1/2"	RA4835	RELIABLE	RFS	CONCEALED	
220	PENDENT	WHITE	212	4.90	1/2"	RA6616	RELIABLE	RFC	CONCEALED	
144	PENDENT	WHITE	212	5.60	1/2"	RA5294	RELIABLE	LTS6C	CONCEALED	
16	PENDENT	WHITE	165	11.20	3/4"	R7146	RELIABLE	G4-XLO	CONCEALED	
32	SIDEWALL	WHITE	200	5.60	1/2"	RA1435	RELIABLE	F1FR56	SEMI-RECESSED	
79	UPRIGHT	BRASS	200	5.60	1/2"	RA1425	RELIABLE	F1FR56	N/A	
19	DRY PENDENT	WHITE	200	5.60	1"	RS714	RELIABLE	F3QR	CONCEALED	
142	UPRIGHT	BRASS	200	5.60	1/2"	RA1375	RELIABLE	F156	N/A	
11	UPRIGHT	BRASS	200	5.60	1/2"	RA1375	RELIABLE	F156	N/A	
2194 TOTAL										

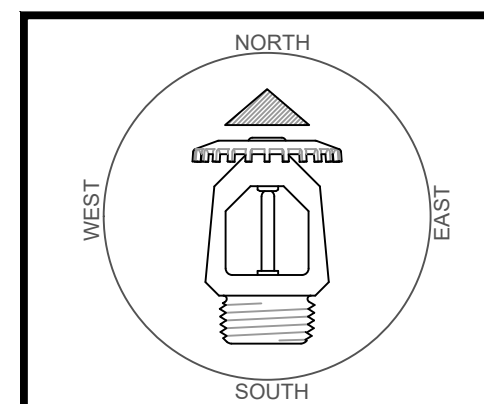
**SPRINKLER HEAD LEGEND**



**HANGER DETAILS**



**SITE PLAN**  
SCALE: 1" = 50'-0"



**REVISIONS**

NO.	DATE	DESCRIPTION

Drawing Title: **FIRE PROTECTION PLAN**  
Project No: 2487437  
Drawn By: AM  
Scale: 1/8" = 1'-0"  
Date: 7-19-22  
DWG Type: SUBMITTAL DWG  
Parcel No: 224800150

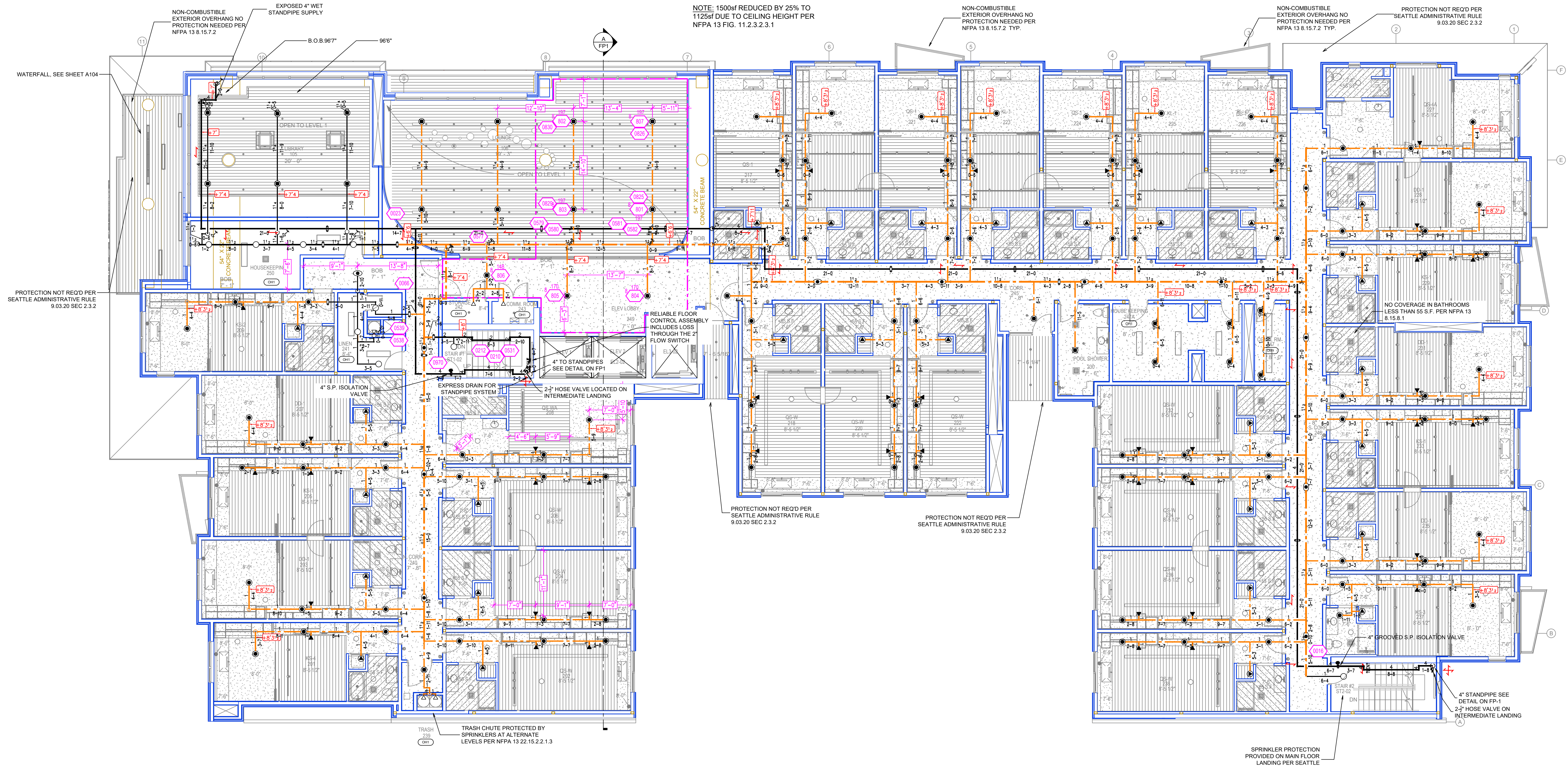
**601 AURORA**  
601 AURORA AVENUE SEATTLE, WA 98109



CALC PLACARD

Design Area #: 8 HAZARD: LH  
 Zone: 4 System Type: WET  
 Location: LOUNGE  
 Flowing Outlets: 7  
 Density: 0.10 Remote Area: 1128  
 Flow: 143.8 gpm @ 89 psi  
 Calculation Safety: 13.7 psi  
 Includes 0 gpm Hose allowance

NOTE: 1500sf REDUCED BY 25% TO 1125sf DUE TO CEILING HEIGHT PER NFPA 13 FIG. 11.2.3.2.1



**LEVEL 2 FIRE PROTECTION PLAN**  
 SCALE: 1/8" = 1'-0"

**TIDYPIPE LEGEND**

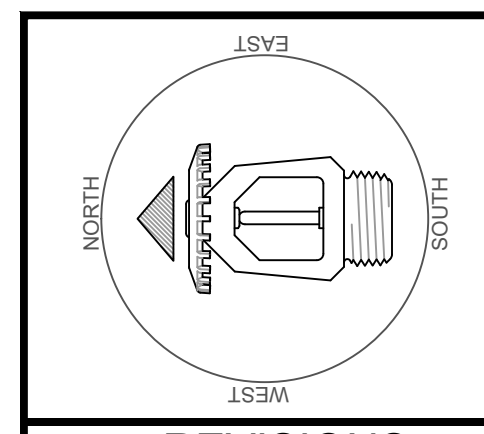
—	WET SYSTEM BLACK STEEL PIPING
—	DRY SYSTEM GALV. STEEL PIPING
—	CPVC BLAZEMASTER PIPING

SYM	CNT	POSITION	FINISH	TEMP	K	RPT	SIN	MP	MODEL#	ES/OUT/CHRN
●	201	PENDENT	WHITE	212	5.60	1/2"	RA3415	RELIABLE	Q5	CONCEALED
●	774	PENDENT	WHITE	165	4.90	1/2"	RA0816	RELIABLE	RFC	CONCEALED
◀	356	SIDEWALL	WHITE	165	4.20	1/2"	RA4835	RELIABLE	RFS	CONCEALED
▲	220	PENDENT	WHITE	212	4.90	1/2"	RA0816	RELIABLE	RFC	CONCEALED
●	84	PENDENT	WHITE	212	5.60	1/2"	RA5984	RELIABLE	LT56C	CONCEALED
■	18	PENDENT	WHITE	165	11.20	3/4"	R7186	RELIABLE	GA-XLD	CONCEALED
◁	12	SIDEWALL	WHITE	200	5.60	1/2"	RA1435	RELIABLE	F1FR66	SEMI-RECESSED
○	79	UPRIGHT	BRASS	200	5.60	1/2"	RA1425	RELIABLE	F1FR66	N/A
◐	19	DRY PENDENT	WHITE	200	5.60	1"	R5714	RELIABLE	F3QR	CONCEALED
◑	402	UPRIGHT	BRASS	200	5.60	1/2"	RA1375	RELIABLE	F156	N/A
◒	11	UPRIGHT	BRASS	200	5.60	1/2"	RA1375	RELIABLE	F156	N/A
2194 TOTAL										

NOTE: RESIDENTIAL PENDENT HEADS CALCULATED AT 16'X16'

NOTE: HALLWAY HEADS CALCULATED AT 28'X8'

NOTE: RESIDENTIAL SIDEWALL HEADS CALCULATED AT 14'X14'



**REVISIONS**

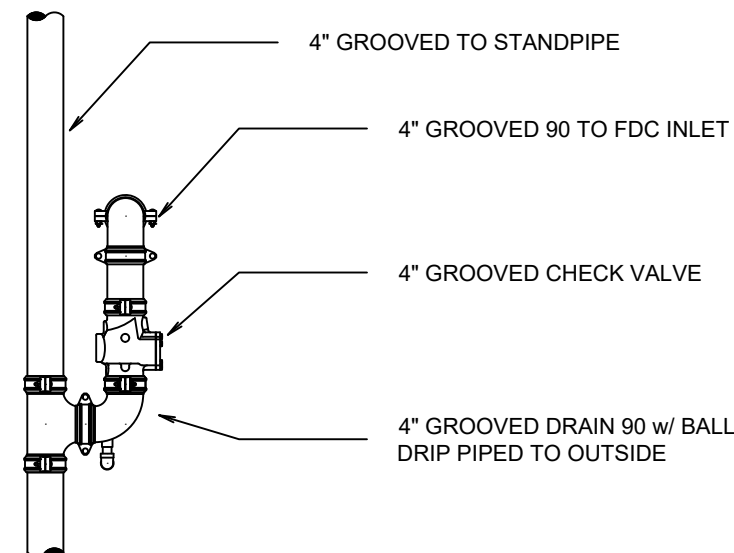
NO.	DATE	DESCRIPTION

**FIRE PROTECTION PLAN**

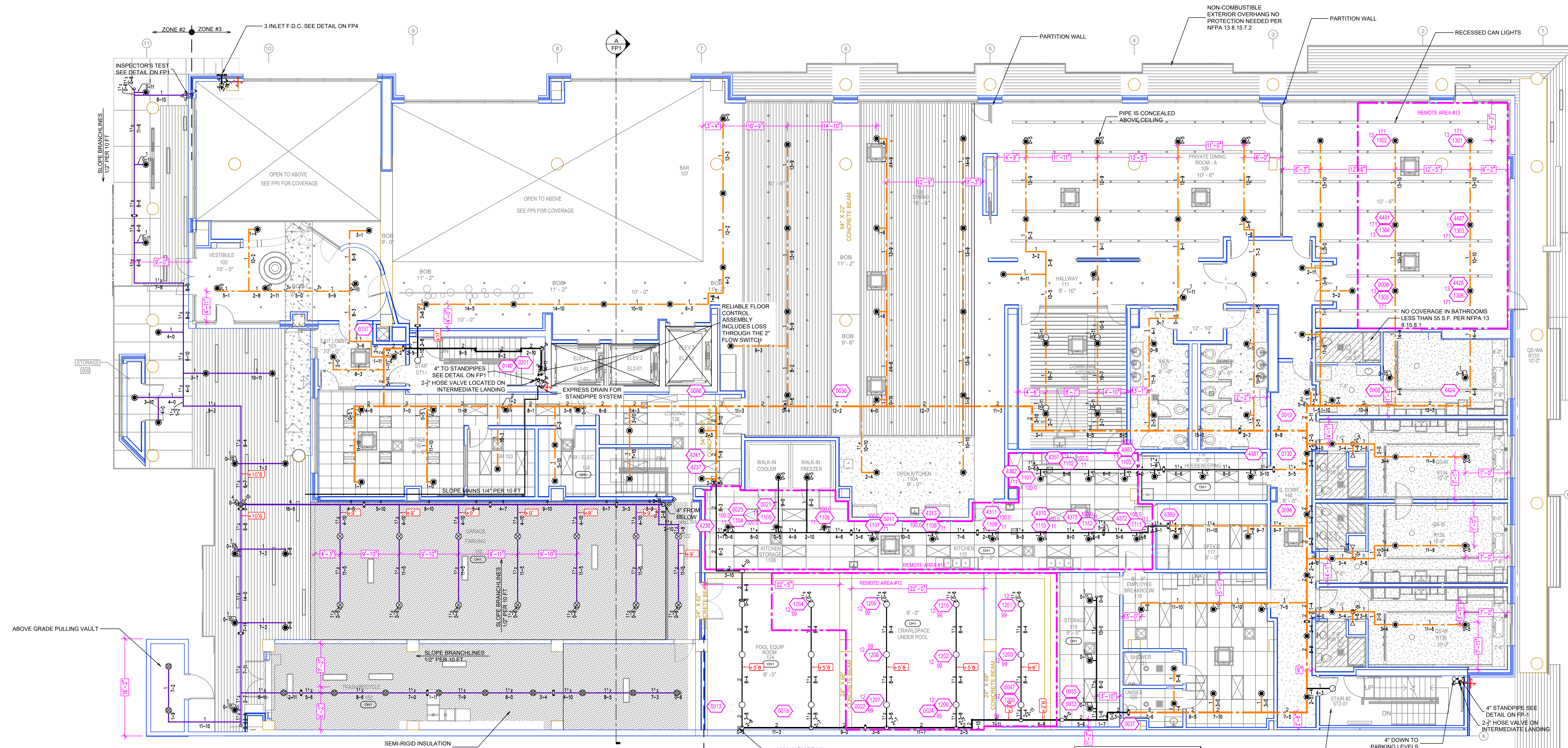
Drawing Title: FIRE PROTECTION PLAN  
 Project No.: 24687437  
 Drawn By: AM  
 Scale: 1/8" = 1'-0"  
 Date: 7-19-22  
 DWG Type: SUBMITTAL DWG  
 Parcel No.: 224800150

**601 AURORA**  
 601 AURORA AVENUE SEATTLE, WA 98109





**FDC DETAIL**  
SCALE: 1/2" = 1'-0"



Design Area # 13 HAZARD: OH1  
Zone: 2 System Type: WET  
Location: PRIVATE DINING

Flowing Outlets: 6  
Density: 0.10 Remote Area: 935  
Flow: 109.1 gpm @ 62.7 psi  
Calculation Safety: 40.1 psi  
Includes: gpm Hose allowance

NOTE: 1500sf REDUCED BY 40% TO 900sf DUE TO CEILING HEIGHT PER NFPA 13 FIG. 19.3.2.3.1  
NOTE: NO HOSE STREAM ALLOWANCE PER SEATTLE ADMINISTRATIVE RULE 9.03.20

Design Area # 12 HAZARD: OH1  
Zone: 2 System Type: WET  
Location: POOL CRAWLSPACE

Flowing Outlets: 10  
Density: 0.15 Remote Area: 975  
Flow: 181.6 gpm @ 60.1 psi  
Calculation Safety: 42.5 psi  
Includes: gpm Hose allowance

NOTE: 1500sf REDUCED BY 40% TO 900sf DUE TO CEILING HEIGHT PER NFPA 13 FIG. 19.3.2.3.1  
NOTE: NO HOSE STREAM ALLOWANCE PER SEATTLE ADMINISTRATIVE RULE 9.03.20

Design Area # 11 HAZARD: OH1  
Zone: 2 System Type: WET  
Location: KITCHEN

Flowing Outlets: 12  
Density: 0.15 Remote Area: 978  
Flow: 193.9 gpm @ 68.2 psi  
Calculation Safety: 16.1 psi  
Includes: gpm Hose allowance

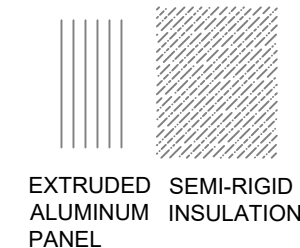
NOTE: 1500sf REDUCED BY 40% TO 900sf DUE TO CEILING HEIGHT PER NFPA 13 FIG. 19.3.2.3.1  
NOTE: NO HOSE STREAM ALLOWANCE PER SEATTLE ADMINISTRATIVE RULE 9.03.20

SPRINKLER PROTECTION PROVIDED ON MAIN FLOOR LANDING PER SEATTLE ADMINISTRATIVE RULE 9.03.20

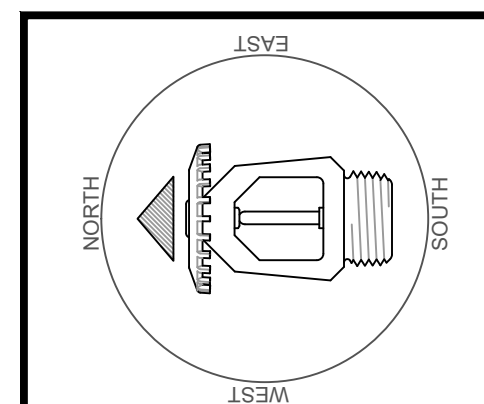
**LEVEL 1 FIRE PROTECTION PLAN**  
SCALE: 1/8" = 1'-0"

**TIDYPIPE LEGEND**

—	WET SYSTEM BLACK STEEL PIPING
—	DRY SYSTEM GALV. STEEL PIPING
—	CPVC BLAZEMASTER PIPING



SYM	CONT	POSITION	FINISH	TEMP	K	NPT	ISN	MPG	MODEL#	ESCUTCHEON	NOTE
●	201	PENDENT	WHITE	212	5.60	1/2"	RA3415	RELIABLE	GS	CONCEALED	NOTE: RESIDENTIAL PENDENT HEADS CALCULATED AT 16'X16'
●	174	PENDENT	WHITE	165	4.90	1/2"	RA0816	RELIABLE	RF	CONCEALED	
■	386	SIDEWALL	WHITE	165	4.20	1/2"	RA4835	RELIABLE	RFS	CONCEALED	NOTE: HALLWAY HEADS CALCULATED AT 28'X8'
■	220	PENDENT	WHITE	212	4.90	1/2"	RA0816	RELIABLE	RF	CONCEALED	
■	84	PENDENT	WHITE	212	5.60	1/2"	RA5994	RELIABLE	LT56C	CONCEALED	NOTE: RESIDENTIAL SIDEWALL HEADS CALCULATED AT 14'X14'
■	16	PENDENT	WHITE	165	11.20	3/4"	R7146	RELIABLE	G4-XLD	CONCEALED	
■	32	SIDEWALL	WHITE	200	5.60	1/2"	RA1435	RELIABLE	F1FR56	SEMI-RECESSED	
○	79	UPRIGHT	BRASS	200	5.60	1/2"	RA1425	RELIABLE	F1FR56	N/A	
○	19	DRY PENDENT	WHITE	200	5.60	1"	RS714	RELIABLE	F2KR	CONCEALED	
○	402	UPRIGHT	BRASS	200	5.60	1/2"	RA1375	RELIABLE	F156	N/A	
○	11	UPRIGHT	BRASS	200	5.60	1/2"	RA1375	RELIABLE	F156	N/A	
2194 TOTAL											



**REVISIONS**

NO.	DATE	DESCRIPTION

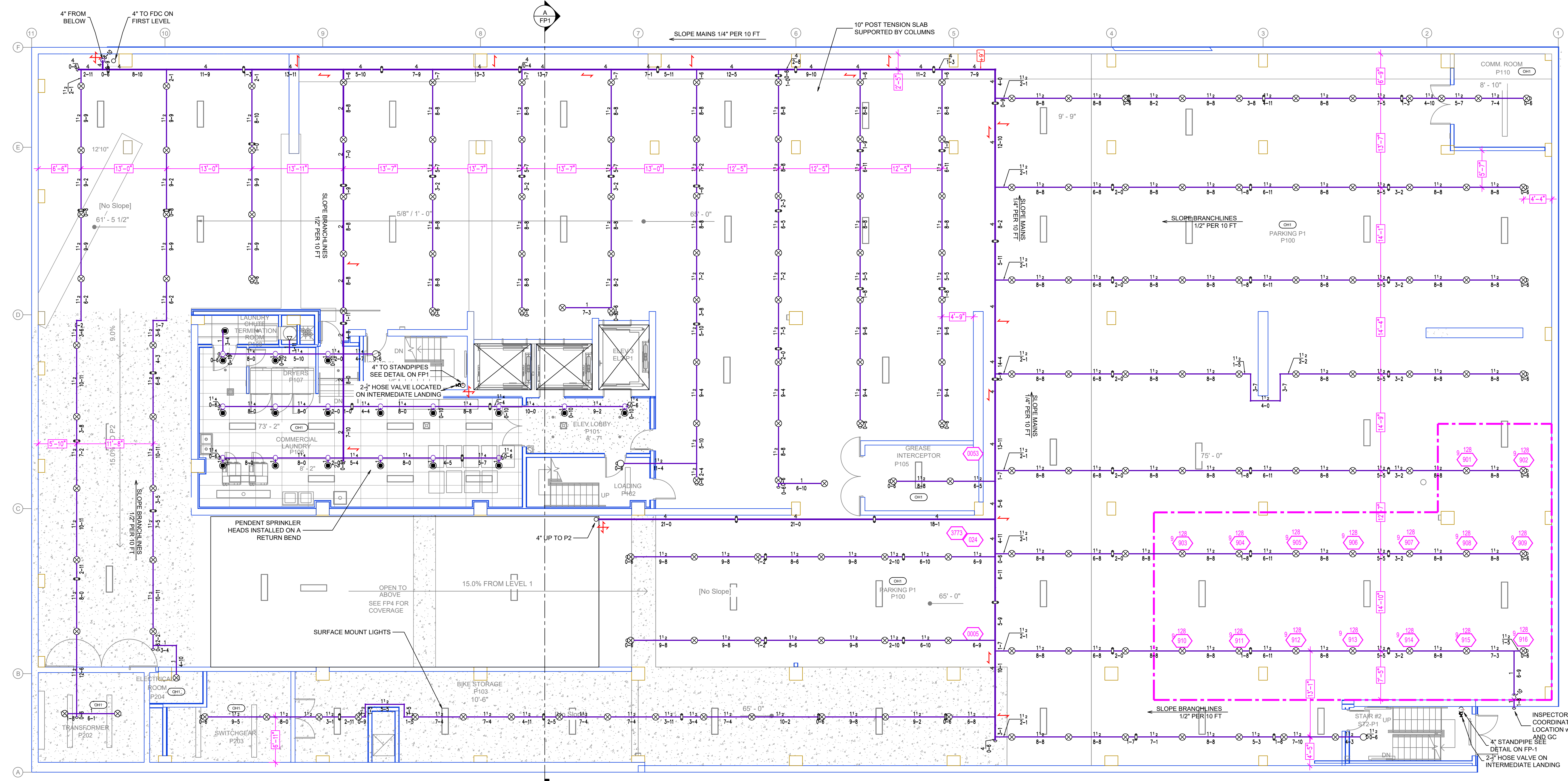
**Drawing Title**

**FIRE PROTECTION PLAN**

Project No. 24687437  
Drawn By AM  
Scale 1/8"=1'-0"  
Date 7-19-22  
DWG Type SEISMIC/TAL DWG  
Parcel No. 224600150

**601 AURORA**  
601 AURORA AVEN SEATTLE, WA 98109





**LEVEL P1 FIRE PROTECTION PLAN**  
SCALE: 3/8" = 1'-0"

**TIDYPIPE LEGEND**

- WET SYSTEM BLACK STEEL PIPING
- DRY SYSTEM GALV. STEEL PIPING
- CPVC BLAZEMASTER PIPING

SYM	CONT	POSITION	FINISH	TEMP	K	NPT	SN	MFC	MODEL#	ESCUTCHEON	NOTE
101	PENDENT	WHITE	212	5.60	1/2"	RA3416	RELIABLE	RFC	CONCEALED		NOTE: RESIDENTIAL PENDENT HEADS CALCULATED AT 16'X16'
174	PENDENT	WHITE	165	4.90	1/2"	RA0616	RELIABLE	RFC	CONCEALED		
356	SIDEWALL	WHITE	165	4.20	1/2"	RA4835	RELIABLE	RFS	CONCEALED		NOTE: HALLWAY HEADS CALCULATED AT 28'X8'
220	PENDENT	WHITE	212	4.90	1/2"	RA0616	RELIABLE	RFC	CONCEALED		
84	PENDENT	WHITE	212	5.60	1/2"	RA0994	RELIABLE	LT50C	CONCEALED		NOTE: RESIDENTIAL SIDEWALL HEADS CALCULATED AT 14'X14'
168	PENDENT	WHITE	165	11.00	3/4"	RT146	RELIABLE	SAHALD	CONCEALED		
132	SIDEWALL	WHITE	200	5.00	1/2"	RA1435	RELIABLE	F1FR56	SEMI-RECESSED		
79	UPRIGHT	BRASS	200	5.60	1/2"	RA1425	RELIABLE	F1FR56	NA		
19	DRY PENDENT	WHITE	200	5.60	1"	RD714	RELIABLE	F3QR	CONCEALED		
402	UPRIGHT	BRASS	200	5.60	1/2"	RA1375	RELIABLE	F156	NA		
11	UPRIGHT	BRASS	200	5.60	1/2"	RA1375	RELIABLE	F156	NA		
2194 TOTAL											

**CALC PLACARD**

Design Area # 9 HAZARD: OH1  
 Zone: 2 System Type: DRY  
 Location: P1

Flowing Outlets: 16  
 Density: 0.15 Remote Area: 1995  
 Flow: 373.8 gpm @ 15.2 psi  
 Calculation Safety: 25.7 psi  
 Includes gpm Hose allowance

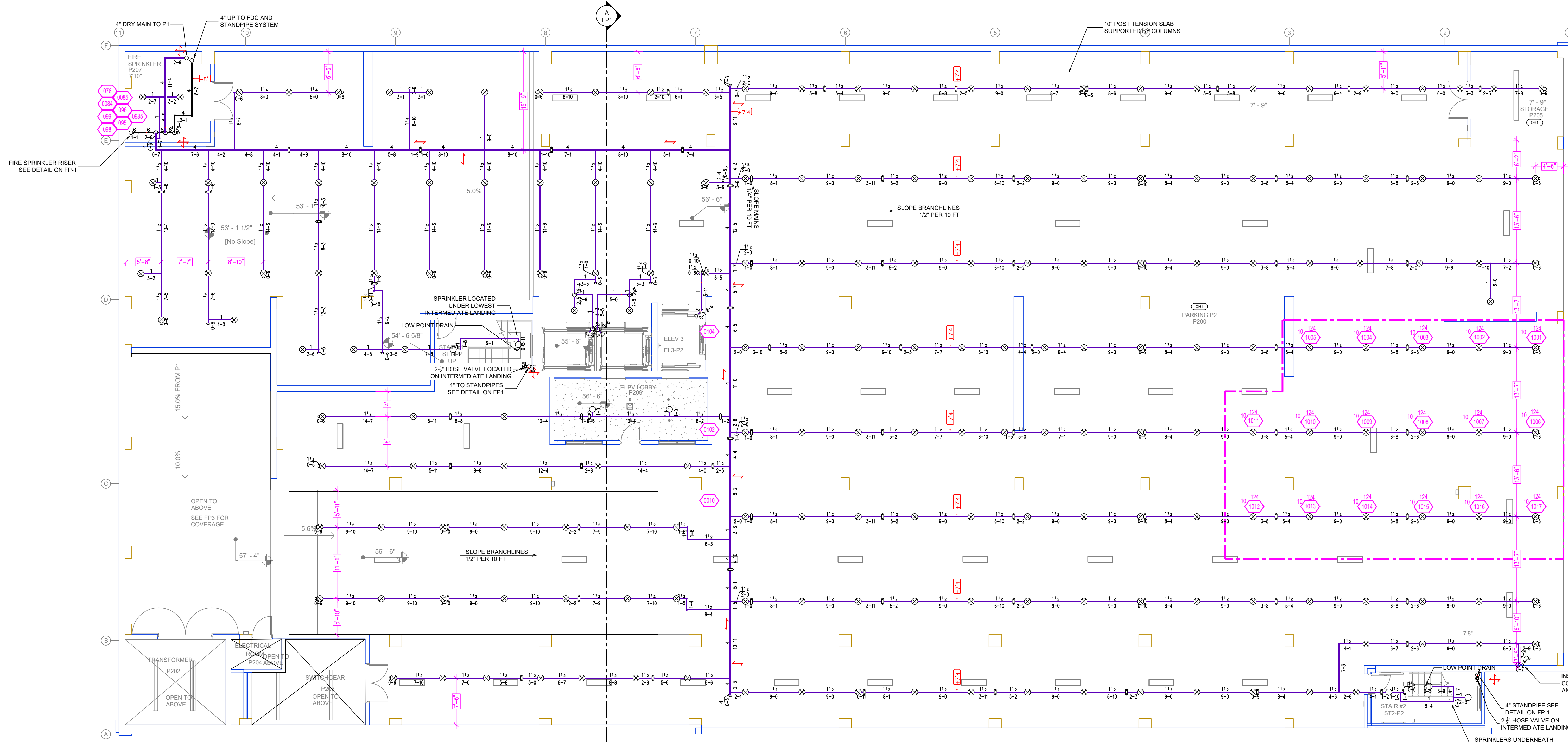
NOTE: 1500sf INCREASED TO 1950SF DUE TO USAGE OF DRY SYSTEM  
 NOTE: NO HOSE STREAM ALLOWANCE PER SEATTLE ADMINISTRATIVE RULE 9.03.20

**REVISIONS**

NO.	DATE	DESCRIPTION

Drawing Title: **FIRE PROTECTION PLAN**  
 Project No: 24687457  
 Drawn By: AM  
 Scale: 1/8"=1'-0"  
 Date: 7-17-22  
 DWG Type: SUBMITTAL DWG  
 Parcel No: 224800150





Design Area # 10 HAZARD: OH1  
 Zone 1 System Type: DRY  
 Location: P2  
 Flowing Outlets: 18  
 Density: 0.15 Remote Area: 1974  
 Flow: 37.5 gpm @ 78.4 psi  
 Calculation Safety: 22.6 psi  
 Includes 0 gpm Hose allowance

NOTE: 1500sf INCREASED TO 1950SF DUE TO USAGE OF DRY SYSTEM  
 NOTE: NO HOSE STREAM ALLOWANCE PER SEATTLE ADMINISTRATIVE RULE 9.03.20

**LEVEL P2 FIRE PROTECTION PLAN**  
 SCALE: 1/8" = 1'-0"

**TIDYPIPE LEGEND**

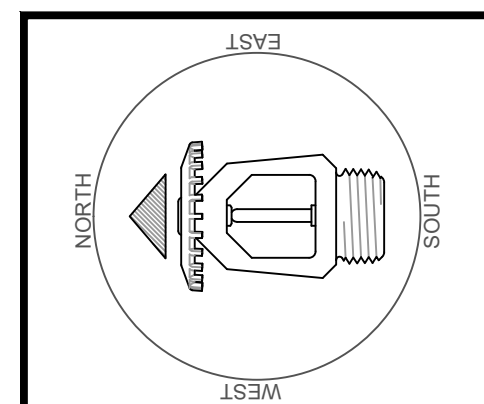
- WET SYSTEM BLACK STEEL PIPING
- DRY SYSTEM GALV. STEEL PIPING
- CPVC BLAZEMASTER PIPING

SYM	CNT	POSITION	FINISH	TEMP	K	NPT	SN	MFG.	MODEL#	ESGUTCHRON
●	001	PENDENT	WHITE	212	5.60	1/2"	RA3415	RELIABLE	GS	CONCEALED
●	074	PENDENT	WHITE	165	4.90	1/2"	RA0616	RELIABLE	RFC	CONCEALED
◀	356	SIDEWALL	WHITE	165	4.20	1/2"	RA4835	RELIABLE	RFS	CONCEALED
⊙	220	PENDENT	WHITE	212	4.90	1/2"	RA0616	RELIABLE	RFC	CONCEALED
⊙	84	PENDENT	WHITE	212	5.60	1/2"	RA0594	RELIABLE	LF56C	CONCEALED
⊙	18	PENDENT	WHITE	165	11.20	3/4"	RT146	RELIABLE	Q14XLD	CONCEALED
◁	32	SIDEWALL	WHITE	200	5.60	1/2"	RA1435	RELIABLE	F1FR56	SEMI-RECESSED
○	79	UPRIGHT	BRASS	200	5.60	1/2"	RA1425	RELIABLE	F1FR56	N/A
○	19	DRY PENDENT	WHITE	200	5.60	1"	RS714	RELIABLE	F3QR	CONCEALED
○	102	UPRIGHT	BRASS	200	5.60	1/2"	RA1375	RELIABLE	F156	N/A
○	11	UPRIGHT	BRASS	200	5.60	1/2"	RA1375	RELIABLE	F156	N/A
2104 TOTAL										

NOTE: RESIDENTIAL PENDENT HEADS CALCULATED AT 16'X16'

NOTE: HALLWAY HEADS CALCULATED AT 28'X8'

NOTE: RESIDENTIAL SIDEWALL HEADS CALCULATED AT 14'X14'



**REVISIONS**

NO.	DATE	DESCRIPTION

**Drawing Title**  
**FIRE PROTECTION PLAN**

Project No. 24687457  
 Drawn By AM  
 Scale 1/8"=1'-0"  
 Date 7-19-22  
 DWG Type SUBMITTAL DWG  
 Parcel No. 224800150

**601 AURORA**  
 601 AURORA AVEN SEATTLE, WA 98109

FP 2 OF 12