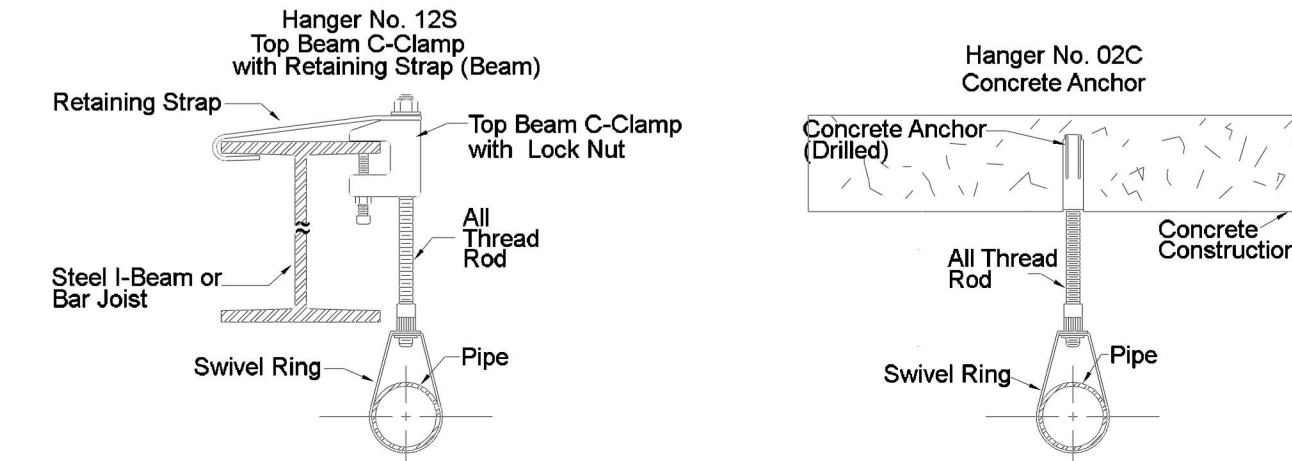
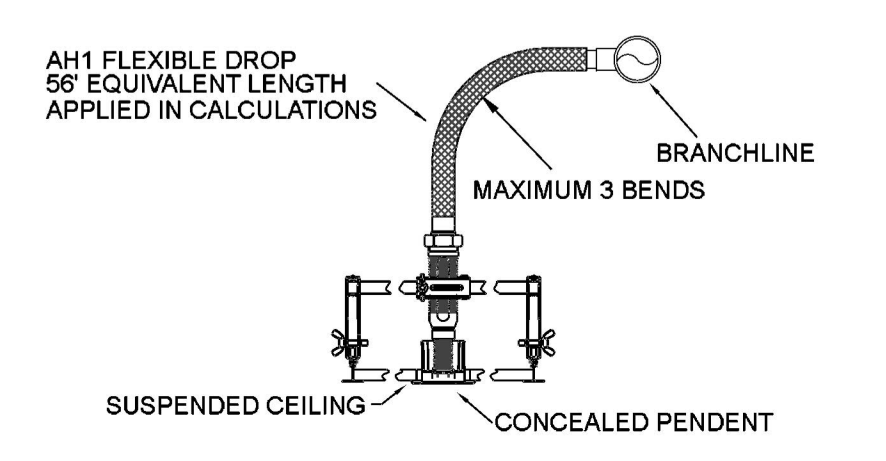


GENERAL INFORMATION

1. INTERNATIONAL BUILDING CODE (2018)
 - 1.1 OCCUPANCY: TYPE E; HIGH SCHOOL
 - 1.2 TYPE OF CONSTRUCTION: I-B (NON-COMBUSTIBLE CONSTRUCTION)
- 1.3 SPRINKLER AREAS (APPROXIMATE - SEE ARCHITECTURAL PLANS FOR ACTUAL)
 - SOUTH FIRE SPRINKLER RISER (AREA ABCD)
 - ZONE 1 (2ND FLOOR AREA AC) = 31,300 S.F.
 - ZONE 2 (2ND FLOOR AREA BD) = 50,000 S.F.
 - ZONE 3 (1ST FLOOR AREA AB) = 35,100 S.F.
 - ZONE 4 (1ST FLOOR AREA CD) = 44,800 S.F.
 - WEST FIRE SPRINKLER RISER (AREA EFG)
 - ZONE 1 (2ND FLOOR AREA EF) = 44,800 S.F.
 - ZONE 2 (2ND FLOOR AREA FG) = 29,500 S.F.
 - ZONE 3 (2ND FLOOR AREA G) = 7,700 S.F.
 - WEST FIRE SPRINKLER RISER (AREA HJKL)
 - ZONE 1 (2ND FLOOR AREA HJ) = 45,800 S.F.
 - ZONE 2 (2ND FLOOR AREA JK) = 42,800 S.F.
 - ZONE 3 (1ST FLOOR AREA KL) = 30,800 S.F.
 - ZONE 4 (1ST FLOOR AREA L) = 31,500 S.F.
- 1.4 DESIGN & INSTALLATION STANDARDS: NFPA-13 (2016)
2. SPRINKLER PIPE TYPES:
 - 2.1 1" PIPE TO BE SCHEDULE 40 BLACK STEEL W/ THREADED FITTINGS
 - 2.2 1" OUTLETS CONNECTED TO AH1-CC FLEXDROPS TO BE VIC IGS; 1" ARMOVERS CONNECTED TO AH1-CC FLEXDROPS TO BE THREADED VIC IGS
 - 2.3 1-1/4" THROUGH 4" PIPE TO BE BLK SCHEDULE 40 W/ GROOVED FITTINGS
 - 2.4 6" AND LARGER PIPE TO BE BLK SCHEDULE 10 W/ GROOVED FITTINGS
 - 2.5 2" AND LARGER PIPE TO USE GROOVED SHORT RADIUS FITTINGS
3. DESIGN CRITERIA:
 - 3.1 LIGHT HAZARD AREAS DESIGNED TO 0.10 GPM/S.F. OVER 1500 S.F.
 - 3.2 ORDINARY HAZARD GROUP I AREAS DESIGNED TO 1.15 GPM/S.F. OVER 1500 S.F.
 - 3.3 ORDINARY HAZARD GROUP II AREAS DESIGNED 0.20 GPM/S.F. OVER 1500 S.F.
 - 3.4 REMOTE AREA REDUCTIONS HAVE BEEN TAKEN WHERE APPLICABLE PER NFPA 13 SEC. 11.2.3.2.3
4. NOTES:
 - 4.1 ALL MATERIAL TO BE NEW AND MEET U.L. STANDARDS
 - 4.2 HANGERS TO BE INSTALLED IN ACCORDANCE WITH NFPA 13 - SEE PLAN FOR HANGING
5. SYMBOLS USED ON DRAWINGS:
 - *x x FF PIPE ELEVATION ABOVE FINISH FLOOR
 - *x x TS PIPE ELEVATION BELOW TOP OF STEEL
 - ROOM HAZARD CLASSIFICATION (ALL ROOMS ARE CONSIDERED LIGHT HAZARD U.N.O.)
 - HYDRAULIC CALCULATION JUNCTION POINT
 - CEILING HEIGHT
 - FIRE RATED WALL
 - WET BLACK STEEL PIPE
 - DRY BLACK STEEL PIPE
6. SCOPE OF WORK:
 - 6.1 INSTALL A COMPLETE WET FIRE SPRINKLER SYSTEM TO COVER ALL AREAS OF BUILDING
 - 6.2 THREE WATER SERVICES WILL SUPPLY THREE FIRE SPRINKLER RISERS IN DIFFERENT AREAS OF THE BUILDING
 - 6.3 SOUTH FIRE SPRINKLER RISER WILL COVER AREAS 'ABCD' WITH A FOUR ZONE WET SYSTEM
 - 6.4 WEST FIRE SPRINKLER RISER WILL COVER AREAS 'EFG' WITH A THREE ZONE WET SYSTEM
 - 6.5 NORTH FIRE SPRINKLER RISER WILL COVER AREAS 'HJKL' WITH A FOUR ZONE WET SYSTEM
 - 6.6 ALL AREAS OF THE BUILDING TO BE INSTALLED AND COVERED IN ACCORDANCE WITH THE LOCAL AUTHORITY HAVING JURISDICTION AND PER NFPA 13



HANGERS
NOT TO SCALE

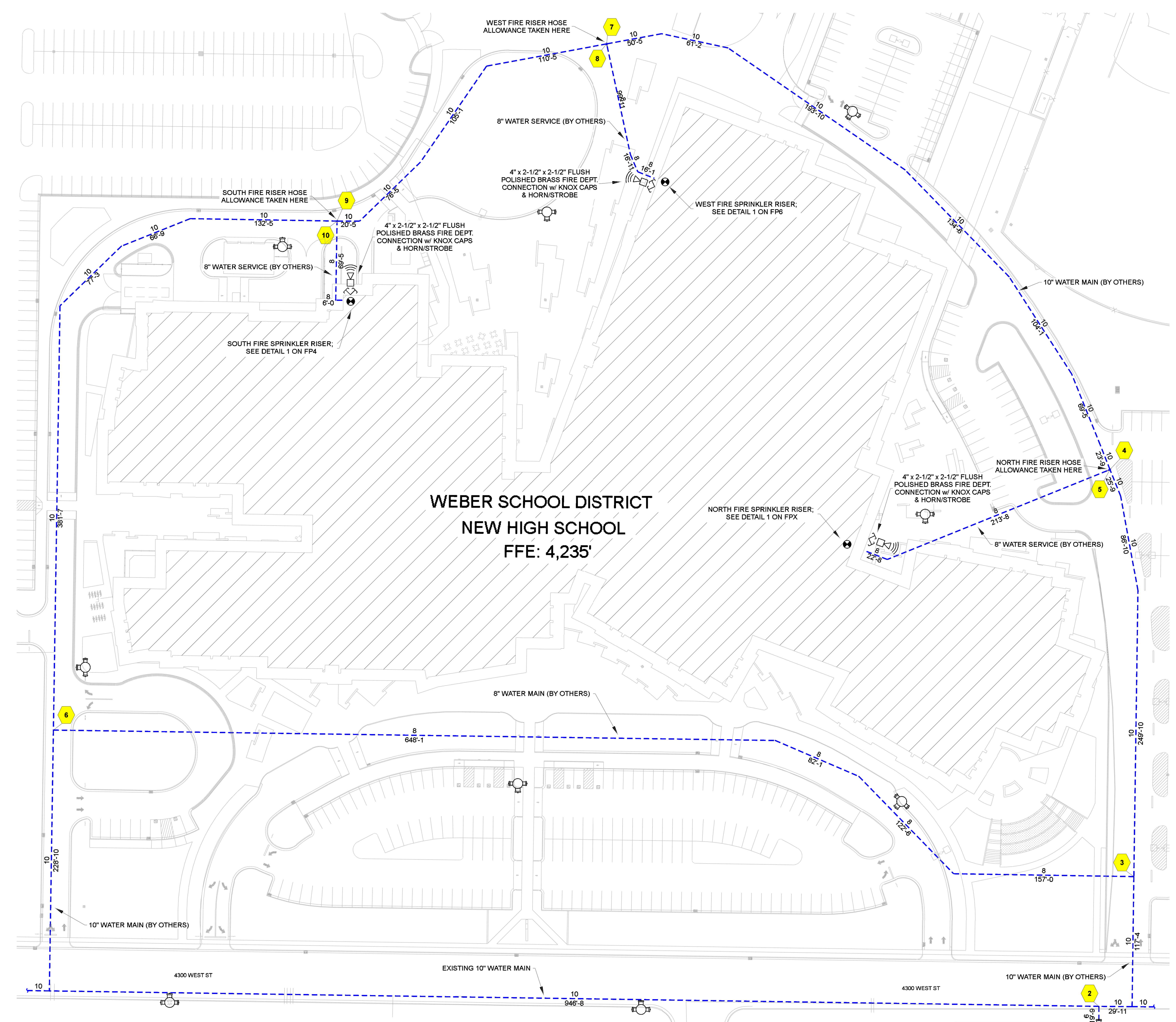
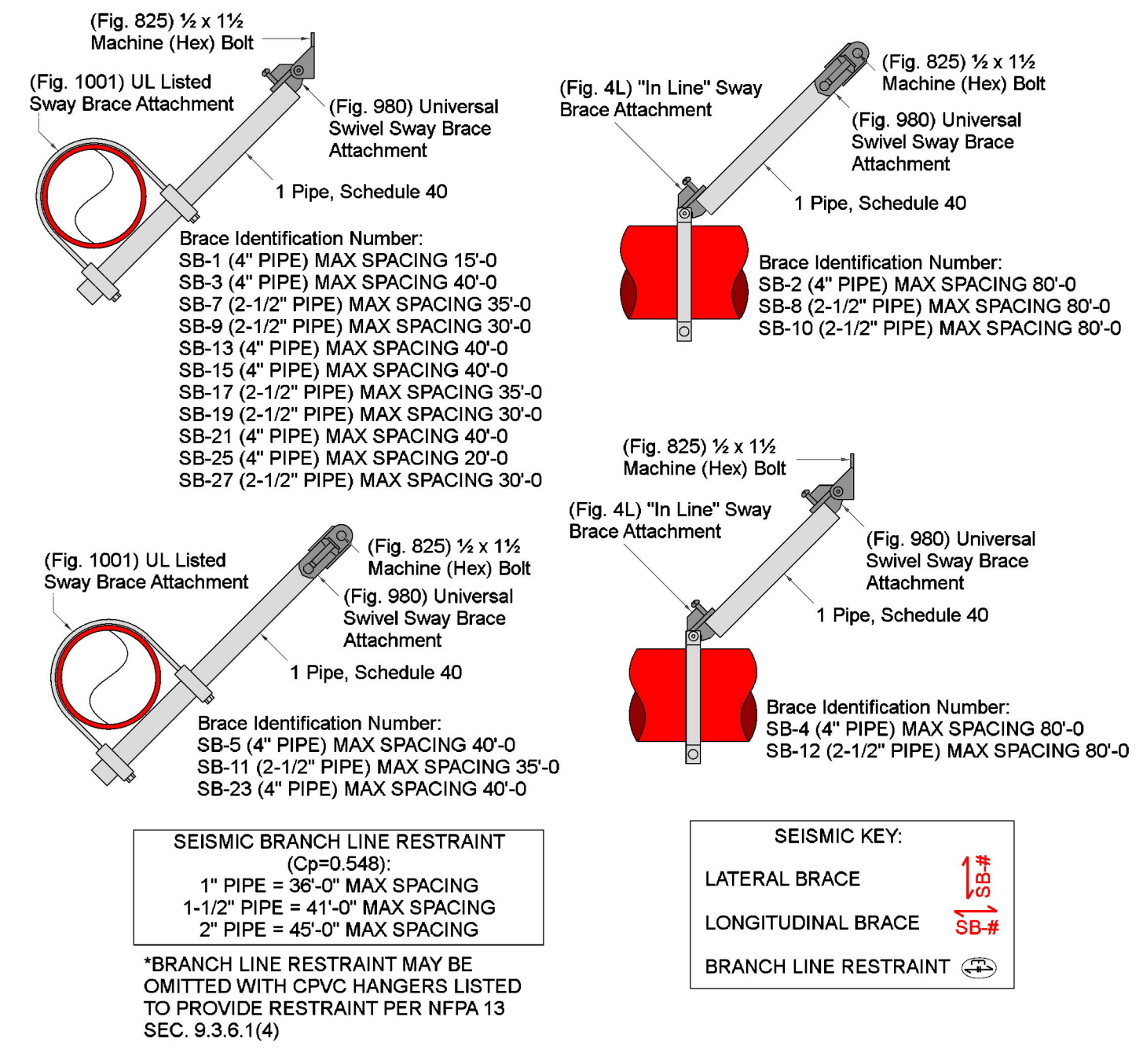
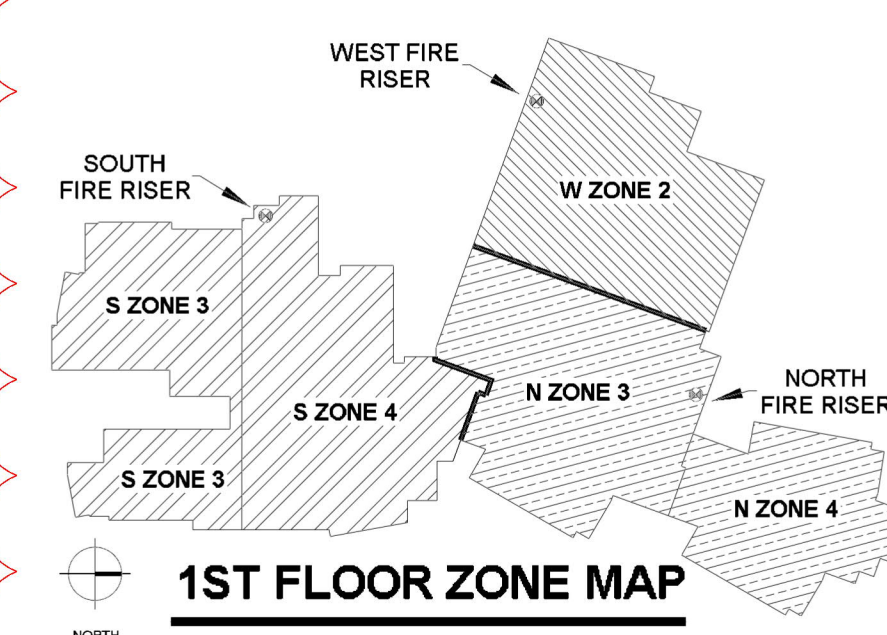
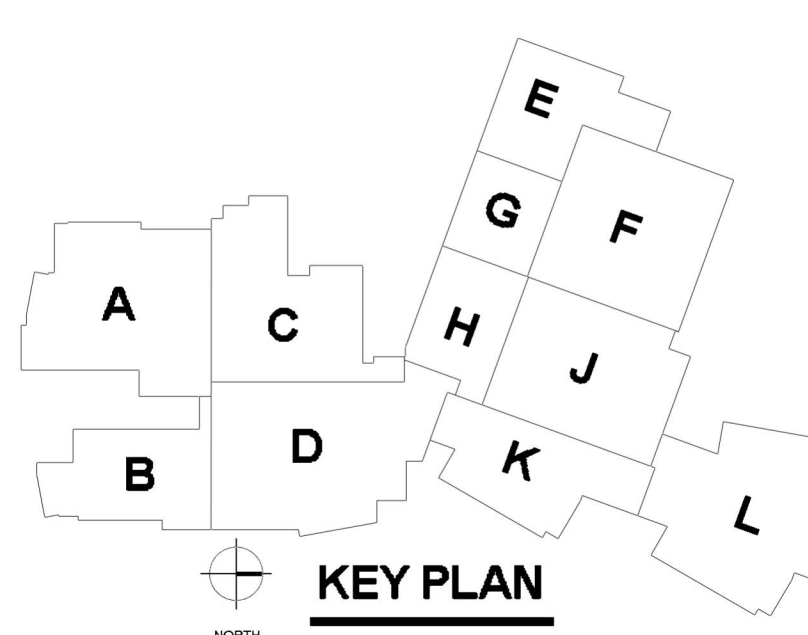
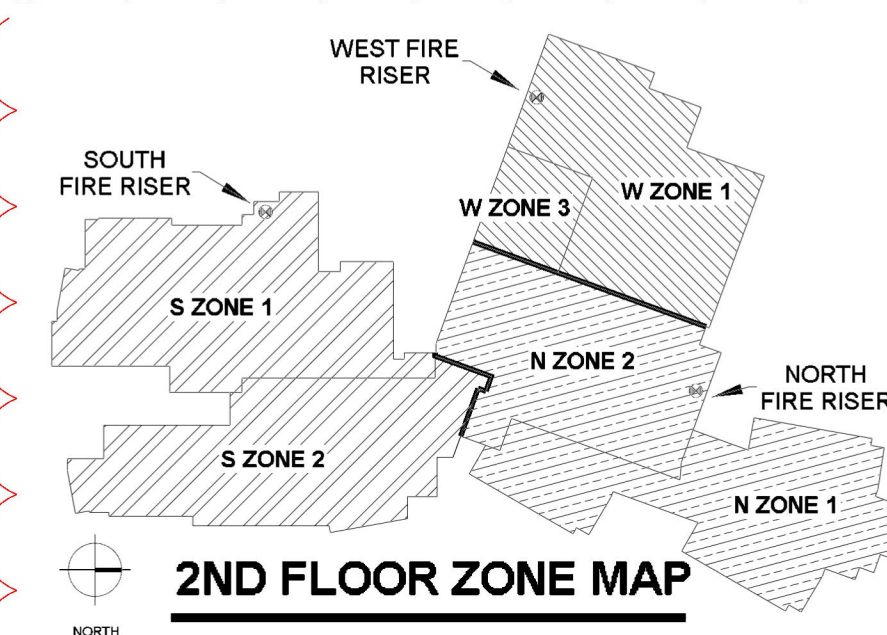
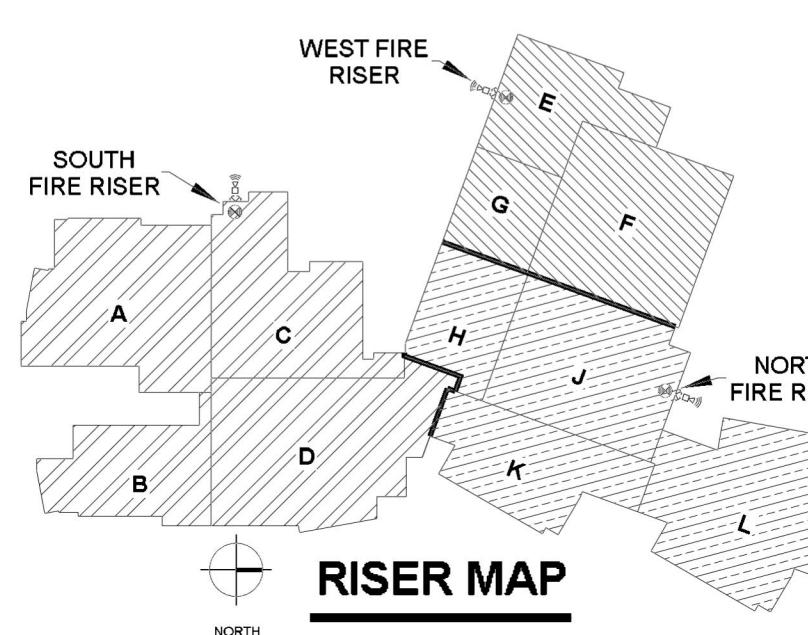


FLEXIBLE SPRINKLER DROP ASSEMBLY
NOT TO SCALE

MAXIMUM DISTANCE BETWEEN HANGERS (FT.-IN.)										
	3/4"	1"	1 1/4"	1 1/2"	2"	2 1/2"	3"	4"	6"	8"
STEEL PIPE EXCEPT THREADED LIGHTWALL	NA	12-0	12-0	15-0	15-0	15-0	15-0	15-0	15-0	15-0

FIRE PROTECTION INDEX

- FP1 FIRE SPRINKLER PLAN SITE PLAN & GENERAL INFORMATION
- FP2 1ST FLOOR AREA A FIRE SPRINKLER PLAN
- FP3 1ST FLOOR AREA B FIRE SPRINKLER PLAN
- FP4 1ST FLOOR AREA C FIRE SPRINKLER PLAN
- FP5 1ST FLOOR AREA D FIRE SPRINKLER PLAN
- FP6 1ST FLOOR AREA E FIRE SPRINKLER PLAN
- FP7 1ST FLOOR AREA F & G FIRE SPRINKLER PLAN
- FP8 1ST FLOOR AREA H FIRE SPRINKLER PLAN
- FP9 1ST FLOOR AREA I FIRE SPRINKLER PLAN
- FP10 1ST FLOOR AREA J FIRE SPRINKLER PLAN
- FP11 1ST FLOOR AREA K FIRE SPRINKLER PLAN
- FP12 2ND FLOOR AREA A FIRE SPRINKLER PLAN
- FP13 2ND FLOOR AREA B & C FIRE SPRINKLER PLAN
- FP14 2ND FLOOR AREA C & D FIRE SPRINKLER PLAN
- FP15 2ND FLOOR AREA E FIRE SPRINKLER PLAN
- FP16 2ND FLOOR AREA F & G FIRE SPRINKLER PLAN
- FP17 2ND FLOOR AREA H FIRE SPRINKLER PLAN
- FP18 2ND FLOOR AREA J FIRE SPRINKLER PLAN
- FP19 2ND FLOOR AREA K FIRE SPRINKLER PLAN
- FP20 2ND FLOOR AREA L FIRE SPRINKLER PLAN



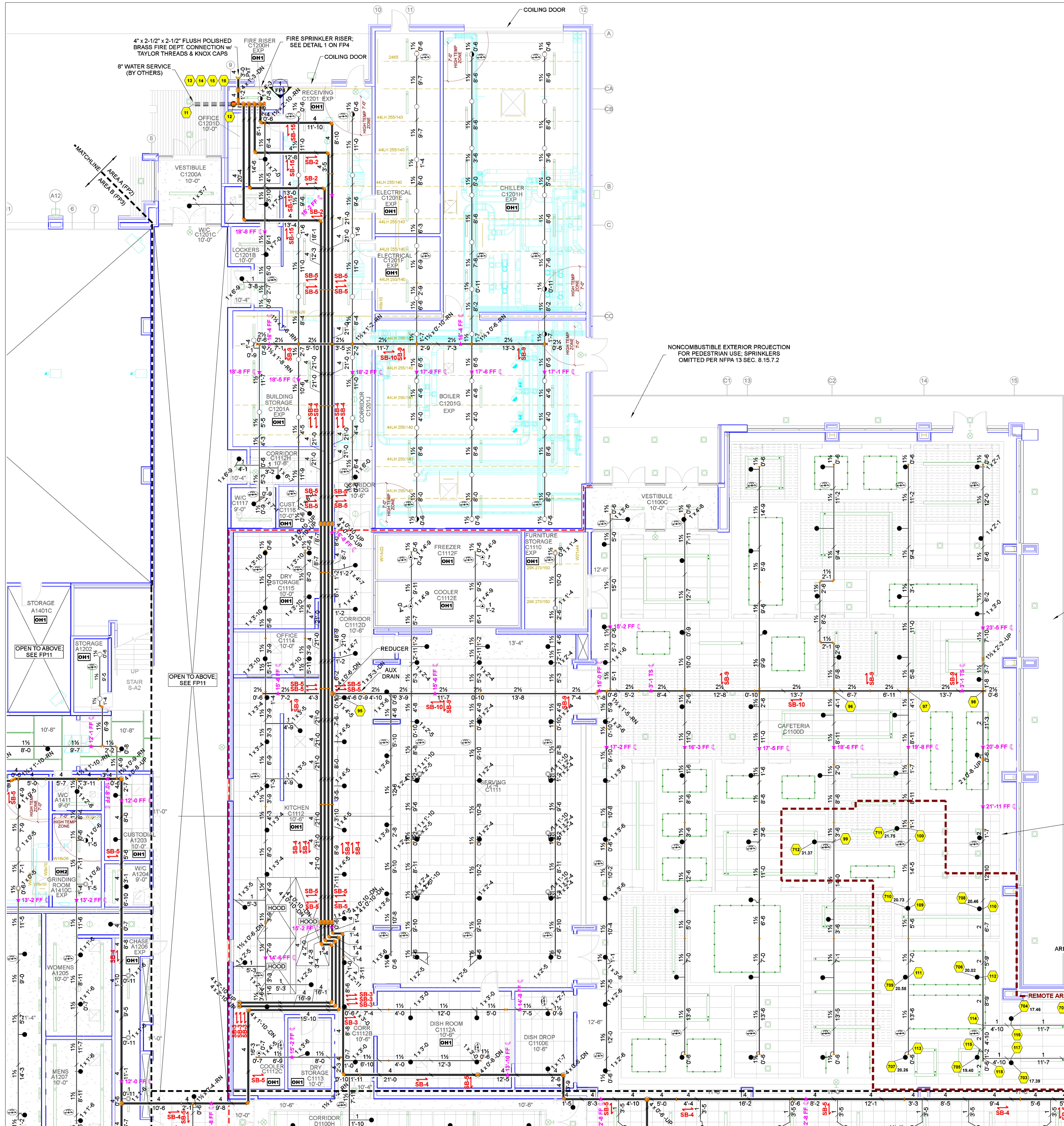
**WEBER SCHOOL DISTRICT
NEW HIGH SCHOOL
FFE: 4,235'**

SITE PLAN
SCALE: 1" = 50'-0"

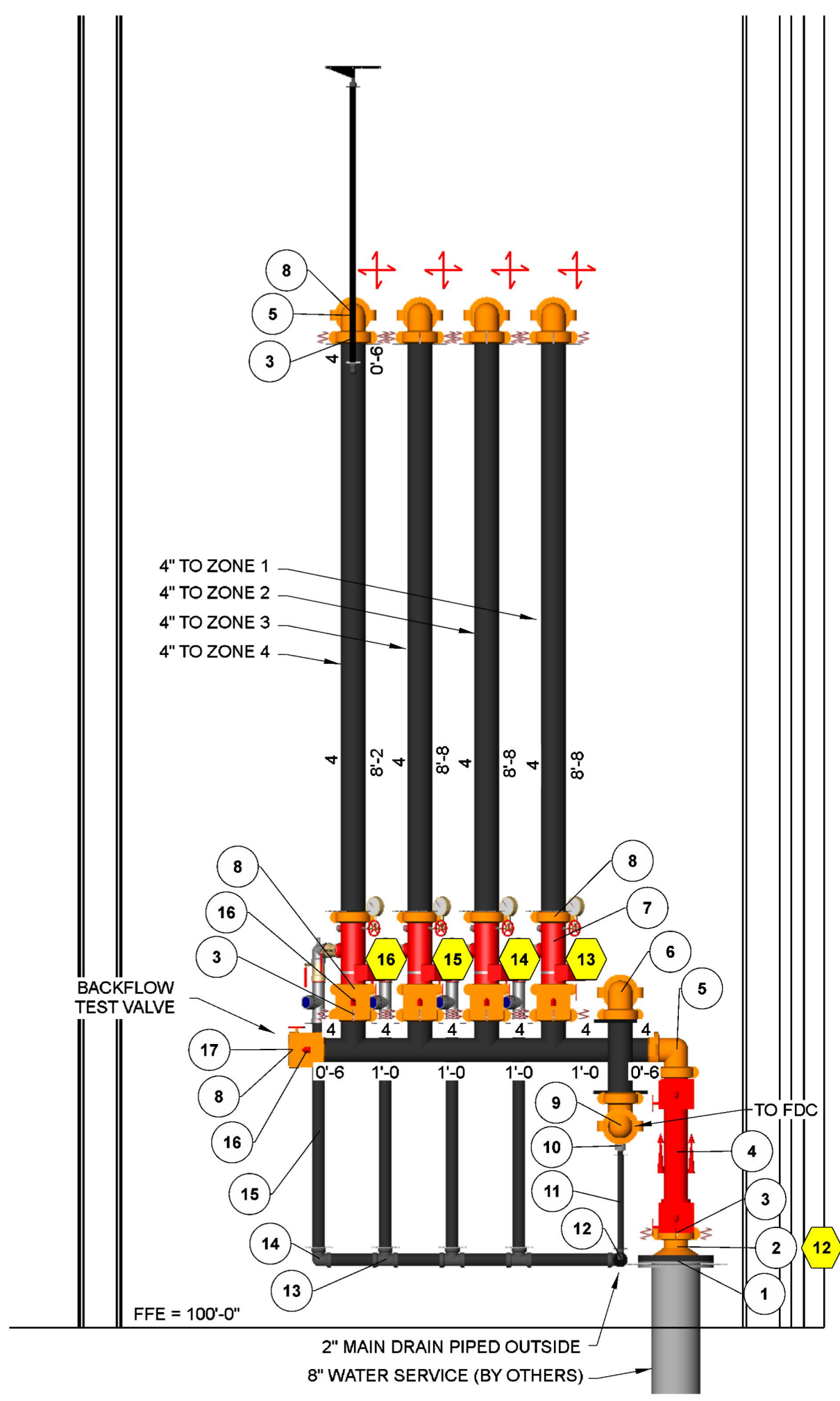
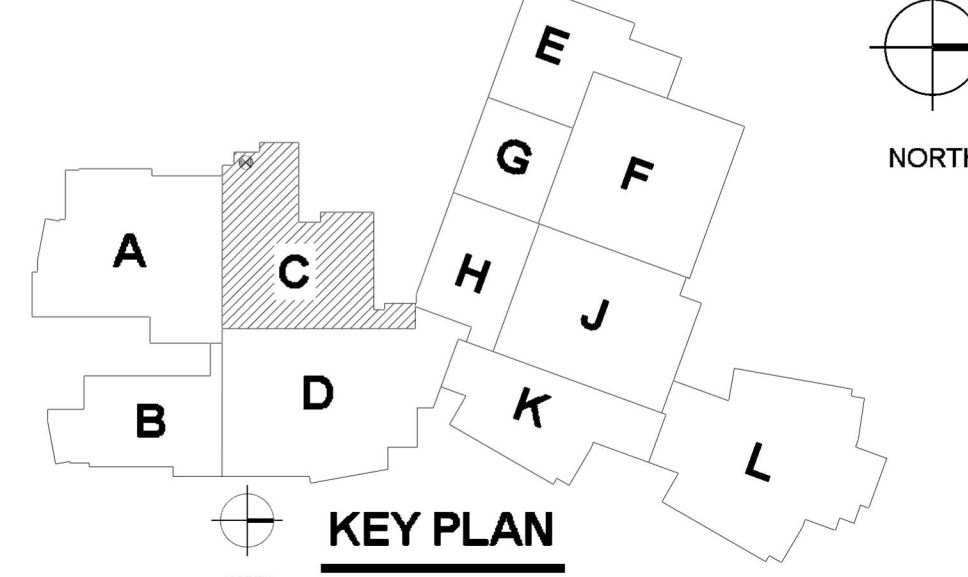
10% REDUCED FLOW DATA:
STATIC = 74 PSI
RESID = 54 PSI
FLOW = 1985 GPM
* FLOW TEST INFORMATION CONDUCTED BY VBFA PERSONNEL ON 3/9/21

WSD HIGH SCHOOL
4400 WEST 2200 SOUTH
TAYLOR, UT

REVISIONS		SHEET CONTENTS	
1	AREA 'ABCD' SUBMITTALS 3/27/23	FIRE SPRINKLER PLAN SITE PLAN & GENERAL INFORMATION	
2	AREA 'HJKL' SUBMITTALS 6/5/23		
PROJECT #: 22006			
DRAWN BY: ADK			
ISSUE DATE: 10/19/22			



1ST FLOOR FIRE SPRINKLER PLAN - AREA C
SCALE: 1/8" = 1'-0"



SOUTH RISER DETAIL
SCALE: 1/2" = 1'-0"

South Riser Parts Legend				
Key Note	Size	Description	Quantity	
1	8	No. 744, F-Grooved, FireLock Hinged Flange, DI, Blk, Vic-Plus Gasket	1	
2	8 x 4	No. 50, Grooved Concentric Reducer, DI, Org	1	
3	4	Style 177N, Push On Flexible Coupling, Org, EHP Gasket	9	
4	4	Colt C200BFG, Backflow, DCVA, Butterfly, G-G	1	
5	4	No. 001, FireLock® Short Radius, 90° Elbow, DI, Org	7	
6	4	Valve, G-G Check	1	
7	4	Grv Riser Manifold	4	
8	4	Style 905N, Push On Rigid Coupling, Install-Ready, Org, Vic-Plus E Gasket	23	
9	4 x 1 x 4	Victaulic® 90° Drain Elbow #10-DR Org	1	
10	1	Ball Drip	1	
11	1	Pipe, Schedule 40	1	
12	2 x 2 x 1	Threaded Reducing Tee, CI	1	
13	2	Threaded Straight Tee, CI	3	
14	2	Threaded, 90° Elbow, CI	2	
15	2	Pipe, Schedule 40	9	
16	4	Valve, G-G Butterfly w/ Tamper	5	
17	4	No. 006, FireLock® Cap, DI, Org	1	
18	2	Threaded 45° Elbow, GMI	1	
19	4 x 2 1/2 x 2 1/2	Two-Way Flush Polished Brass Fire Dept. Connection	1	

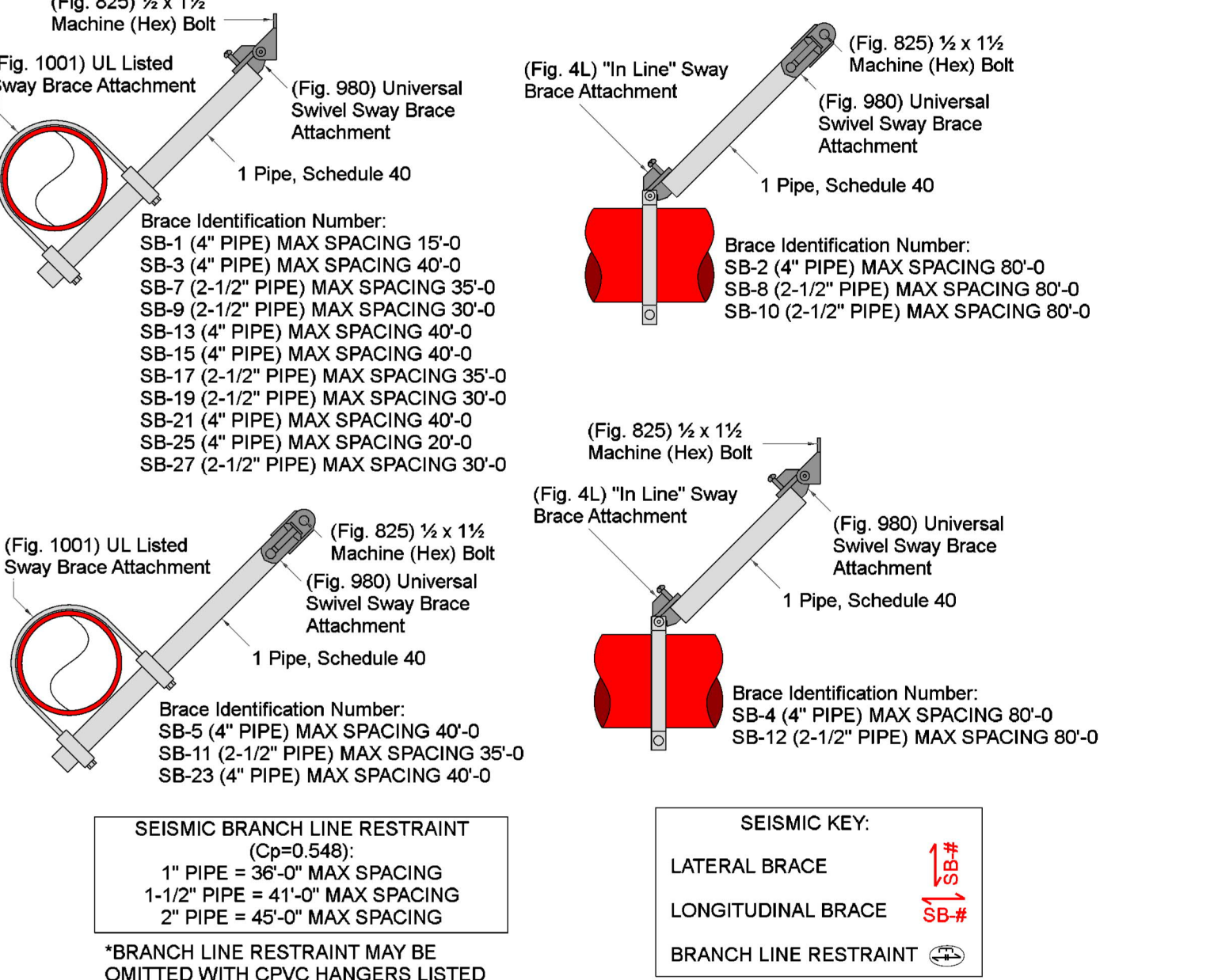
NONCOMBUSTIBLE EXTERIOR PROJECTION FOR PEDESTRIAN USE; SPRINKLERS OMITTED PER NFPA 13 SEC. 8.15.7.2

Hydraulic Information	
Remote Area 7	
OCCUPANCY CLASSIFICATION	Light Hazard
DENSITY (gm/ft ³)	0.10 for 1500 ft ² (Actual 1637 ft ²)
TOTAL HOSE STREAMS	100
TOTAL HEADS FLOWING	12
K-FACTOR	5.6
TOTAL WATER REQUIRED	342.88
TOTAL PRESSURE REQUIRED	70.561
BASE OF RISER (psf)	242.88
BASE OF RISER (psi)	64.768
SAFETY MARGIN (psi)	+2.662 (3.6%)

NOTE: DENSITY/AREA METHOD

SPRINKLERS OMITTED ABOVE CLOUD CEILINGS PER NFPA 13 SEC. 8.15.24.1; PER TABLE 8.15.24.1 MAX SPRINKLER PROTECTION AREA IS 225 S.F. FOR OPENING WIDTH LESS THAN OR EQUAL TO 0.5 IN/FT OF CEILING HEIGHT (10 IN / 20 FT = 0.5 IN/FT)

NONCOMBUSTIBLE EXTERIOR PROJECTION FOR PEDESTRIAN USE; SPRINKLERS OMITTED PER NFPA 13 SEC. 8.15.7.2



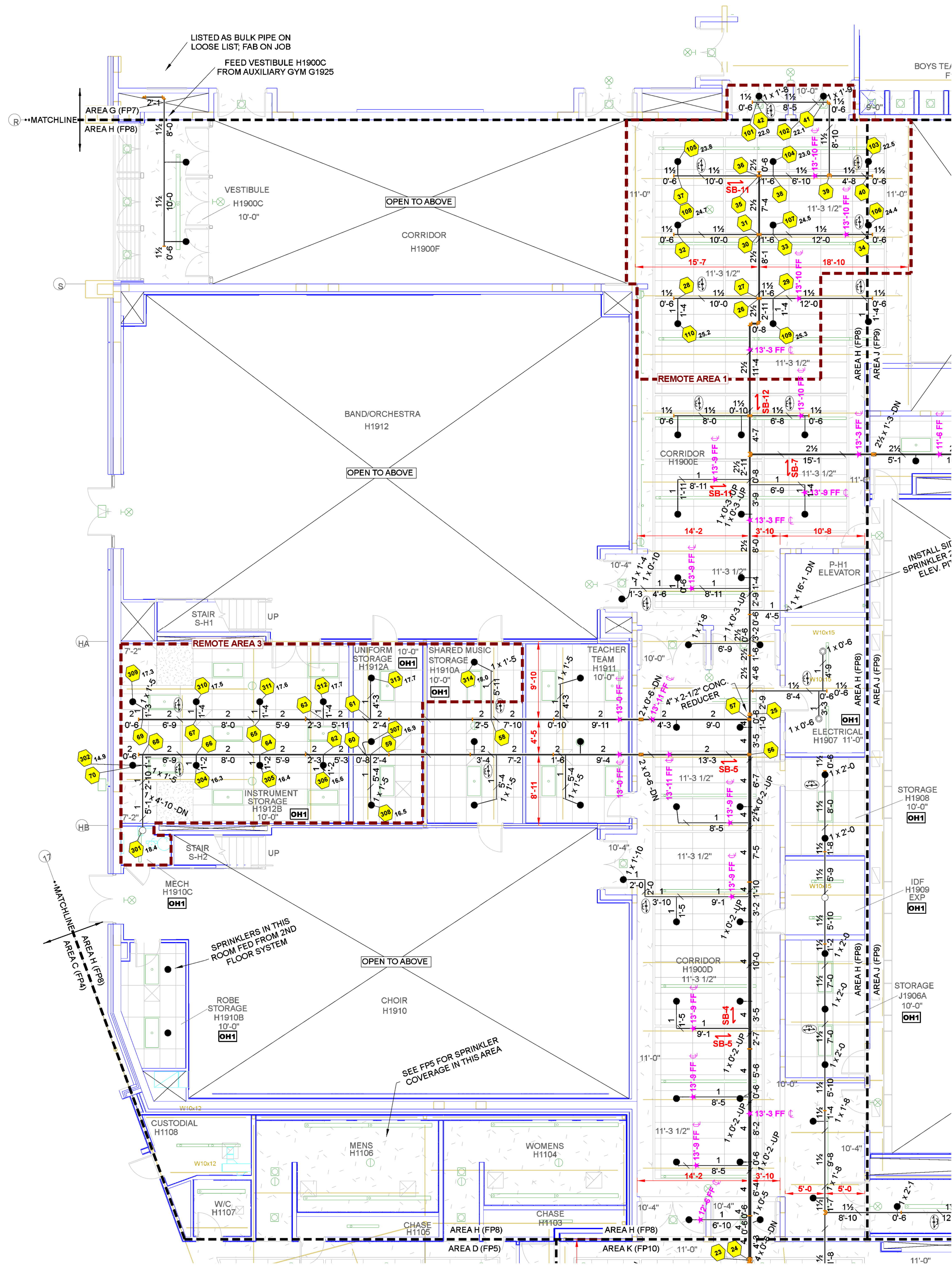
SEISMIC DETAILS

Sprinkler Legend - 1st Floor Area ABCD											
Symbol	Manufacturer	SIN	Model	Quantity	K-Factor	Type	Size	Response	Finish	Temperature	Note
●	Victaulic	V3802	FL-QR/C	540	5.6	Pendent	1/2"	Quick	Brass	200 °F	CONCEALED
○	Victaulic	V2704	FL-QR	93	5.6	Upright	1/2"	Quick	Brass	200 °F	N/A
○	Victaulic	V2704	FL-QR	48	5.6	Upright	1/2"	Quick	Brass	200 °F	SPRIG
○	Victaulic	V2704	FL-QR	17	5.6	Upright	1/2"	Quick	Brass	288 °F	N/A
○	Victaulic	V2710	FL-QR/SW	5	5.6	Sidewall	1/2"	Quick	Brass	200 °F	N/A
△	Victaulic	V3606	FL-QR/DRY	5	5.6	Pendent	1"	Quick	Chrome	200 °F	STANDARD
				Total = 708							

WSD HIGH SCHOOL
4400 WEST 2200 SOUTH
TAYLOR, UT

REVISIONS	

SHEET CONTENTS
1ST FLOOR AREA C



CORRIDOR H1900E		INSTRUMENT STORAGE H1912B	
Remote Area 1	Remote Area 3	Remote Area 1	Remote Area 3
OCCUPANCY CLASSIFICATION	Light Hazard	OCCUPANCY CLASSIFICATION	Ordinary Group I
DENSITY (gpm/ft ²)	0.10 for 1500 ft ² (Actual 1073 ft ²)	DENSITY (gpm/ft ²)	0.10 for 1500 ft ² (Actual 979 ft ²)
QUICK RESPONSE REDUCTION	11'-4" Ceiling (38.0%) 930 ft ²	QUICK RESPONSE REDUCTION	10'-0" Ceiling (40.0%) 900 ft ²
TOTAL HOSE STREAMS	100.0	TOTAL HOSE STREAMS	250.0
TOTAL HEADS FLOWING	10	TOTAL HEADS FLOWING	13
K-FACTOR	5.6	K-FACTOR	5.6
TOTAL WATER REQUIRED	337.5	TOTAL WATER REQUIRED	471.8
TOTAL PRESSURE REQUIRED	63.5	TOTAL PRESSURE REQUIRED	39.4
BASE OF RISER (gpm)	287.5	BASE OF RISER (gpm)	271.8
BASE OF RISER (psi)	57.4	BASE OF RISER (psi)	33.2
SAFETY MARGIN (psi)	+9.8 (13.4%)	SAFETY MARGIN (psi)	+33.2 (45.7%)

NOTE: REMOTE AREA REDUCED BY 38% DUE TO 11'-4" CEILING HEIGHT. 50 GPM INSIDE HOSE ADDED AT STAGE.

NOTE: REMOTE AREA REDUCED BY 40% DUE TO 10'-0" CEILING HEIGHT. 50 GPM INSIDE HOSE ADDED AT STAGE.

North Riser Parts Legend				
Key Note	Size	Description	Quantity	
1	8	No. 744, F-Grooved, FireLock Hinged Flange, DI, Blk, Vic-Plus Gasket	1	
2	8 x 4	No. 50, Grooved Concentric Reducer, DI, Org	1	
3	4	Style 177N, Push On Flexible Coupling, Org, EHP Gasket	10	
4	4	Coil C200BFC, Backflow, DCVA, Butterfly, G-G	1	
5	4	No. 001, FireLock® Short Radius, 90° Elbow, DI, Org	8	
6	4	Valve, G-G Butterfly w/ Tamper	5	
7	4	Qrv Riser Manifold w/ Flow Switch, Gauge, Pressure Relief, Inspector's Test/Drain	4	
8	1 1/2	Style 009N, Push On Rigid Coupling, Install-Ready, Org, Vic-Plus E Gasket	1	
9	4	Style 009N, Push On Rigid Coupling, Install-Ready, Org, Vic-Plus E Gasket	22	
10	4	Valve, G-G Check	1	
11	4 x 1 x 4	Victaulic 90° Drain Elbow #10-DR Org w/ Ball Drip	1	
12	2	Main Drain	1	
13	2	Threaded 45° Elbow, GMI	1	
14	4 x 2 1/2 x 2 1/2	Two-Way Flush Polished Brass Fire Dept. Connection	1	
15	2 x 2 x 1	Threaded Reducing Tee, CI	1	
16	2	Threaded Straight Tee, DI	2	
17	2	Threaded, 90° Elbow, DI	1	
18	4	No. 006, FireLock® Cap, DI, Org	1	

