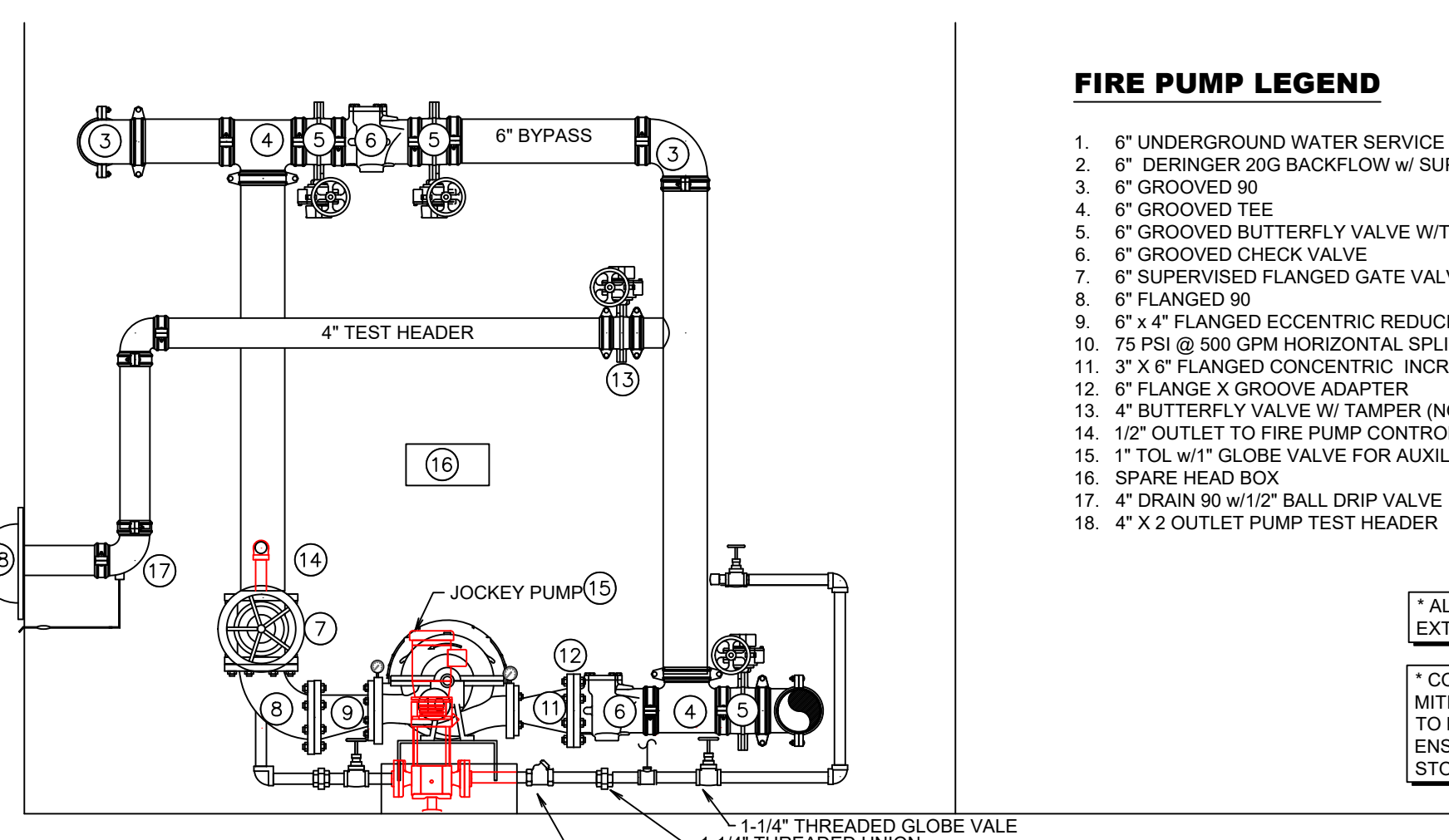


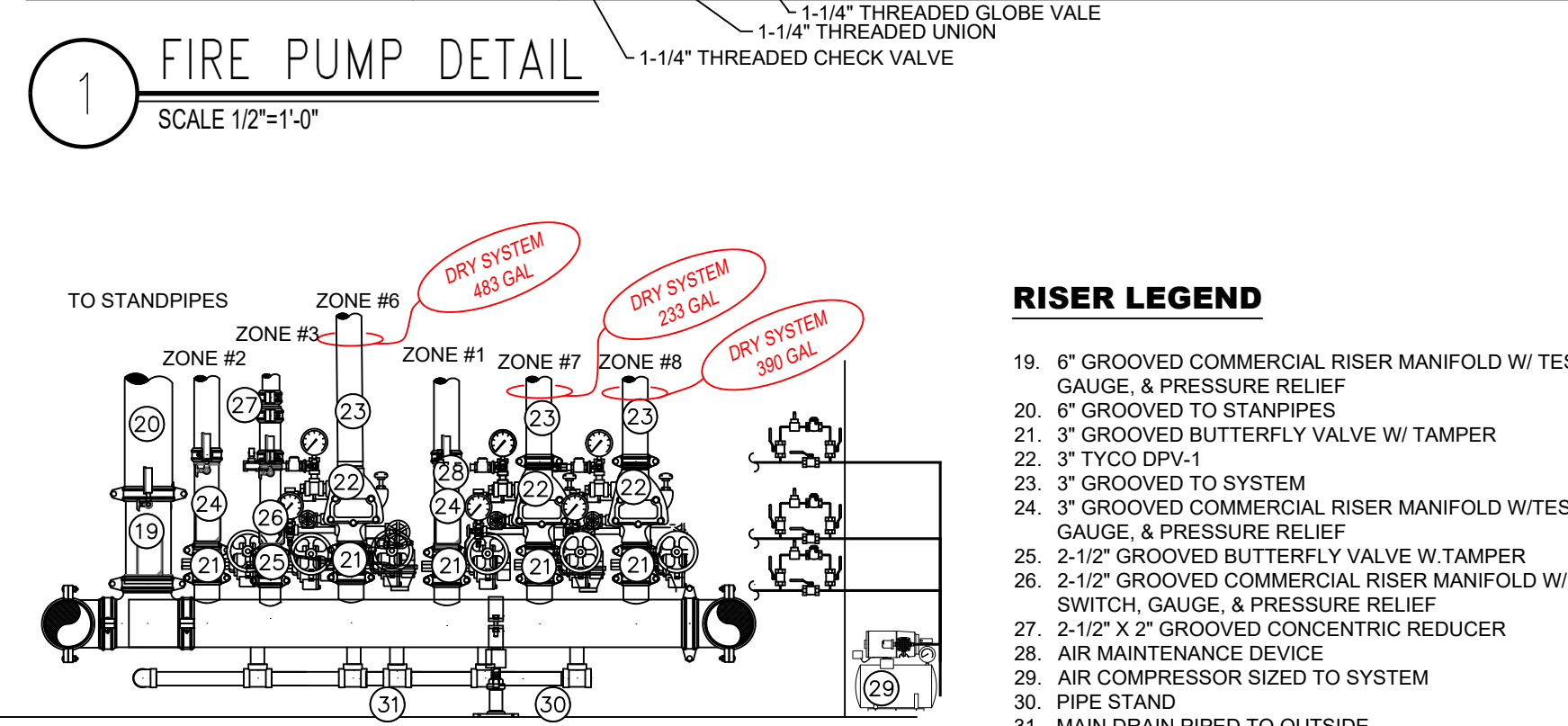
FIRE PUMP ROOM DETAIL
SCALE 1/2"=1'-0"



FIRE PUMP LEGEND

- 1. 6" UNDERGROUND WATER SERVICE (BY OTHERS)
- 2. 6" DIAPHRAGM 200 BACKFLOW W/ SUPERVISED GATE VALVES
- 3. 6" GROOVED 90°
- 4. 6" GROOVED TEE
- 5. 6" GROOVED BUTTERFLY VALVE W/TAMPER
- 6. 6" GROOVED CHECK VALVE
- 7. 6" SUPERVISED FLANGED GATE VALVE W/ TAMPER
- 8. 6" FLANGED 90°
- 9. 8" x 4" FLANGED ECCENTRIC REDUCER
- 10. 75 PSIG @ 300 GPM HORIZONTAL SPLIT CASE PUMP W/AUTOMATIC RELIEF VALVE
- 11. 3" x 6" FLANGED CONCENTRIC INCREASER
- 12. 6" FLANGE X GROOVE ADAPTER
- 13. 4" BUTTERFLY VALVE W/ TAMPER (NORMALLY CLOSED)
- 14. 1/2" OUTLET TO FIRE PUMP CONTROLLER
- 15. 1" TOL W/1" GLOBE VALVE FOR AUXILIARY DRAIN
- 16. SPARE HEAD BOX
- 17. 4" DRAIN 90 W/1/2" BALL DRIP VALVE
- 18. 4" x 2" OUTLET PUMP TEST HEADER

* ALL WIRING/INTERFACING OF ALARMS BY OTHERS
* ALL PIPING PENETRATING THE EXTERIOR WALL TO BE GALVANIZED
* COORDINATE WITH G.C. OWNER TO MITIGATE POSSIBLE INTERRUPTIONS TO FIRE PUMP OPERATION AND TO ENSURE PUMP ROOM IS FREE FROM STORAGE.



RISER DETAIL
SCALE 1/2"=1'-0"

RISER LEGEND

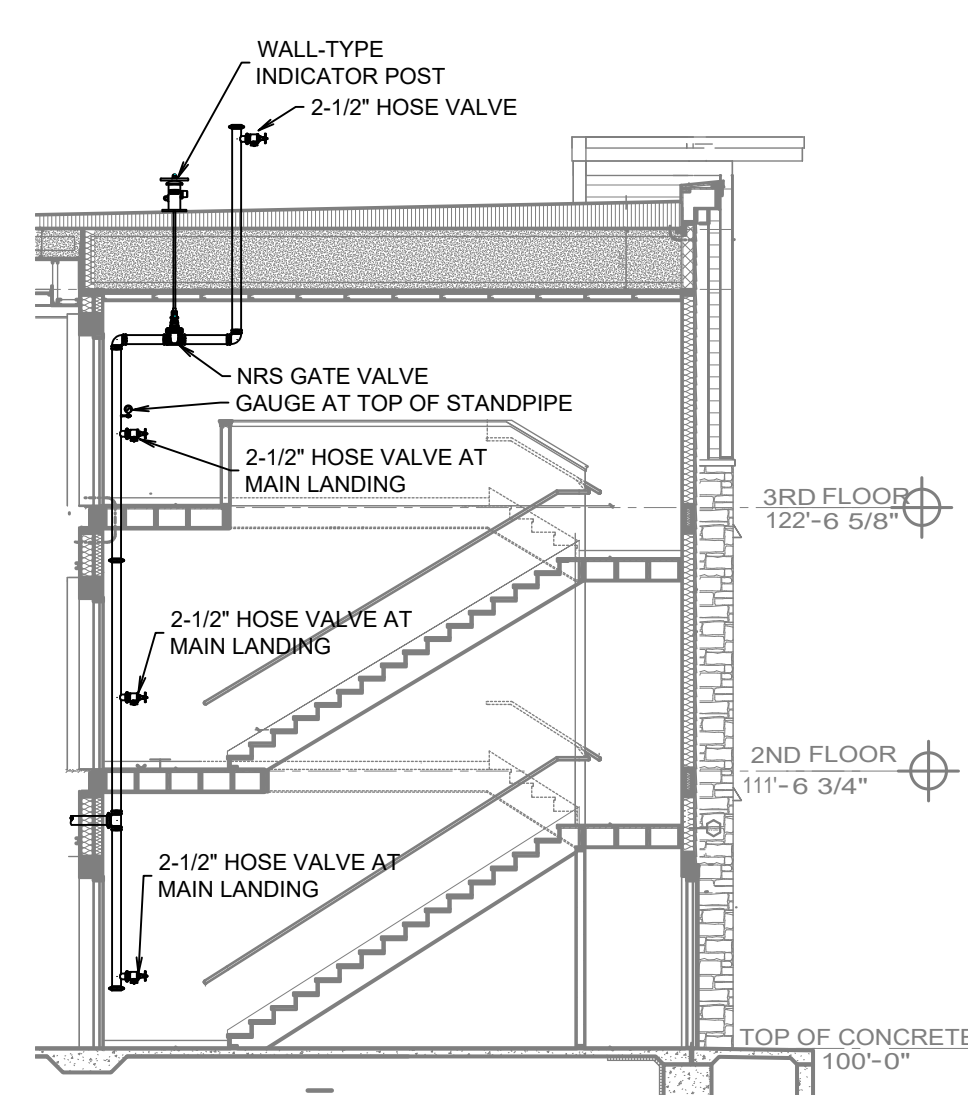
- 19. 6" GROOVED COMMERCIAL RISER MANIFOLD W/ TEST AND DRAIN, FLOW SWITCH, GAUGE, & PRESSURE RELIEF
- 20. 6" GROOVED TO STANPIPES
- 21. 3" GROOVED BUTTERFLY VALVE W/ TAMPER
- 22. 3" TYCO DPV-1
- 23. 3" GROOVED TO SYSTEM
- 24. 3" GROOVED COMMERCIAL RISER MANIFOLD W/TEST AND DRAIN, FLOW SWITCH, GAUGE, & PRESSURE RELIEF
- 25. 2-1/2" GROOVED BUTTERFLY VALVE W/ TAMPER
- 26. 2-1/2" GROOVED COMMERCIAL RISER MANIFOLD W/ TEST AND DRAIN, FLOW SWITCH, GAUGE, & PRESSURE RELIEF
- 27. 2-1/2" x 2" GROOVED CONCENTRIC REDUCER
- 28. AIR MAINTENANCE DEVICE
- 29. AIR COMPRESSOR SIZED TO SYSTEM
- 30. PIPE STAND
- 31. MAIN DRAIN PIPED TO OUTSIDE



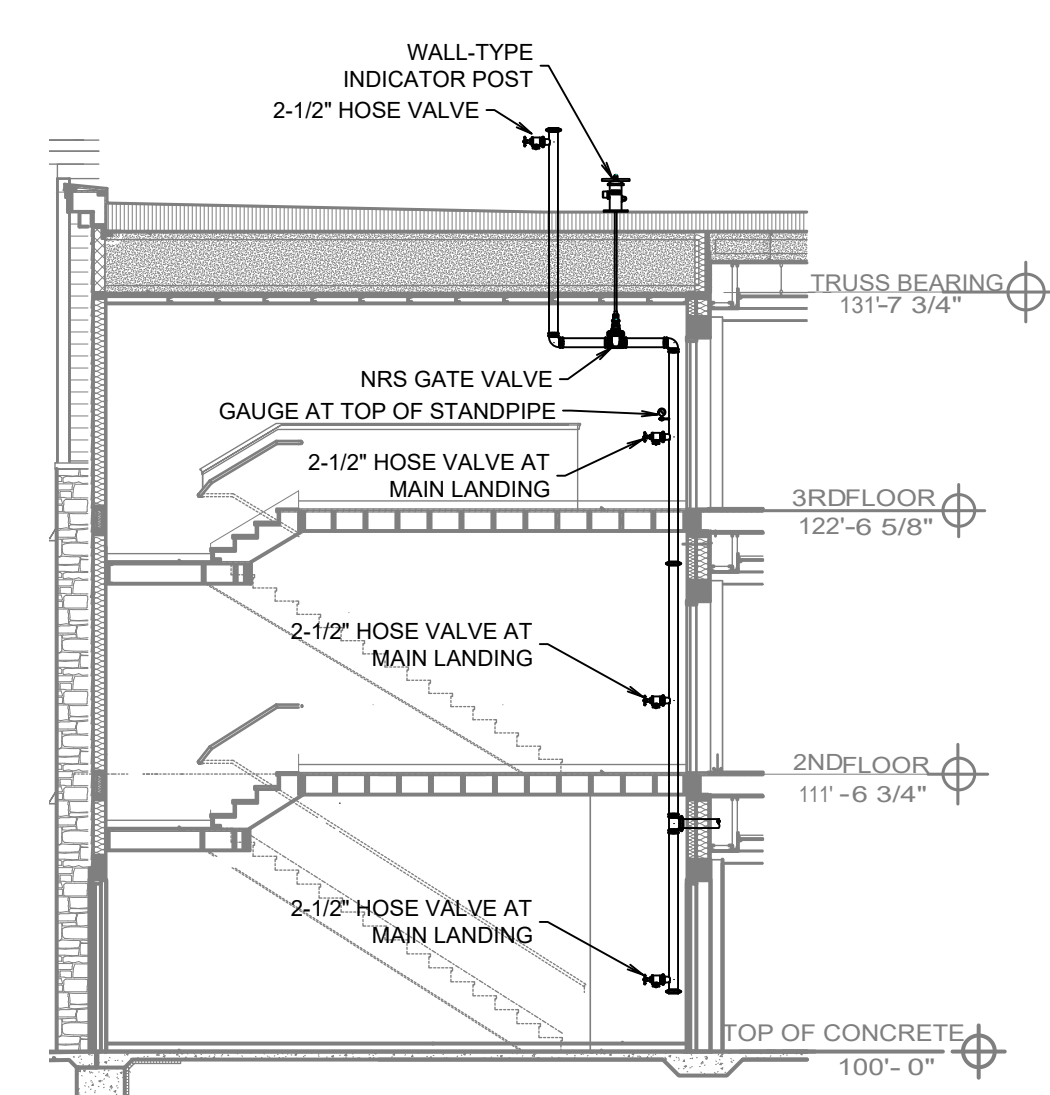
BUILDING SECTION
SCALE 1/8"=1'-0"

GENERAL NOTES

- 1. INTERNATIONAL BUILDING CODE (2015)
- 1.1. OCCUPANCY- INSTITUTIONAL TYPE I-1- ASSISTED LIVING/2 COMMONS
- 1.2. TYPE OF CONSTRUCTION V-A (1HR RATED PROTECTED, COMBUSTIBLE CONSTRUCTION)
- 1.3. SPRINKLERED AREAS (APPROXIMATE - SEE ARCHITECTURAL PLANS FOR ACTUAL)
- MEMORY CARE = 24,671 S.F. (ZONE 1)
- COMMONS = 16,492 S.F. (ZONE 2)
- ASSISTED LIVING 1ST FLOOR = 24,892 S.F. (ZONE 3)
- ASSISTED LIVING 2ND FLOOR = 24,892 S.F. (ZONE 4)
- ASSISTED LIVING 3RD FLOOR = 24,892 S.F. (ZONE 5)
- ASSISTED LIVING ATTIC = 24,125 S.F. (ZONE 6)
- COMMONS ATTIC = 16,492 S.F. (ZONE 7)
- MEMORY CARE ATTIC = 24,671 S.F. (ZONE 8)
- 1.4. INSTALLATION STANDARDS: SPRINKLER SYSTEM DESIGNED AND INSTALLED PER NFPA-13, NFPA-14, NFPA-20 (2016)
- 2. SPRINKLER PIPE TYPES:
2.1. 1" BRANCH LINES TO BE BLAZEMASTER CPVC PIPING WITH CEMENTED FITTINGS
2.2. 1/2" THROUGH 2" MAIN & BRANCH LINES TO BE BLAZEMASTER CPVC PIPING WITH CEMENTED FITTINGS
2.3. 1" BRANCH LINES TO BE BLK SCHEDULE 40 WITH THREADED FITTINGS
2.4. 1/2" THROUGH 6" MAINS & BRANCH LINES TO BE BLK SCHEDULE 10 WITH GROOVED FITTINGS
- 2.5. 1" BRANCH LINES TO BE BLK SCHEDULE 40 WITH THREADED FITTINGS
2.6. 1/2" THROUGH 6" MAINS & BRANCH LINES TO BE BLK SCHEDULE 10 WITH GROOVED FITTINGS
2.7. MAINS & BRANCH LINES TO BE ROLL-GROOVED BLK SCHEDULE 10 PIPING
- 3. DESIGN CRITERIA:
3.1. DWELLING UNITS, CORRIDORS, RESTROOMS, FITNESS ROOM, THEATER, LIVING ROOM AND SIMILAR TO BE LIGHT HAZARD.
3.2. MECHANICAL, ELECTRICAL, STORAGE, LAUNDRY ROOMS TO BE ORDINARY HAZARD GROUP 1.
- 4. NOTES:
4.1. ALL MATERIAL TO BE NEW AND MEET U.L. STANDARDS
4.2. HANGERS TO BE INSTALLED IN ACCORDANCE WITH NFPA 13 (2016) - SEE PLAN FOR HANGING REQ.
4.3. DRY SYSTEM PIPE SLOPE INSTALLATION:
SPRINKLER MAINS TO BE 1/2" PER 10 FEET
SPRINKLER BRANCH LINES TO BE 1/2" PER 10 FEET
4.4. DRY SYSTEM CAPACITY:
4.4.1. 483 GAL DRY ZONE #6
4.4.2. 233 GAL DRY ZONE #7
4.4.3. 390 GAL DRY ZONE #8
- 5. SYMBOLS USED ON DRAWINGS:
+10' PIPE ELEVATION A.F.F.
-12' PIPE ELEVATION BELOW B.O.D.
ORH ROOM HAZARD CLASSIFICATION (ALL ROOMS ARE CONSIDERED LIGHT HAZARD UNLESS NOTED)
HYDRAULIC CALCULATION JUNCTION POINT
9'-0" CEILING HEIGHT
- 6. SCOPE OF WORK:



STANDPIPE DETAIL B
SCALE 1/8"=1'-0"



STANDPIPE DETAIL C
SCALE 1/8"=1'-0"

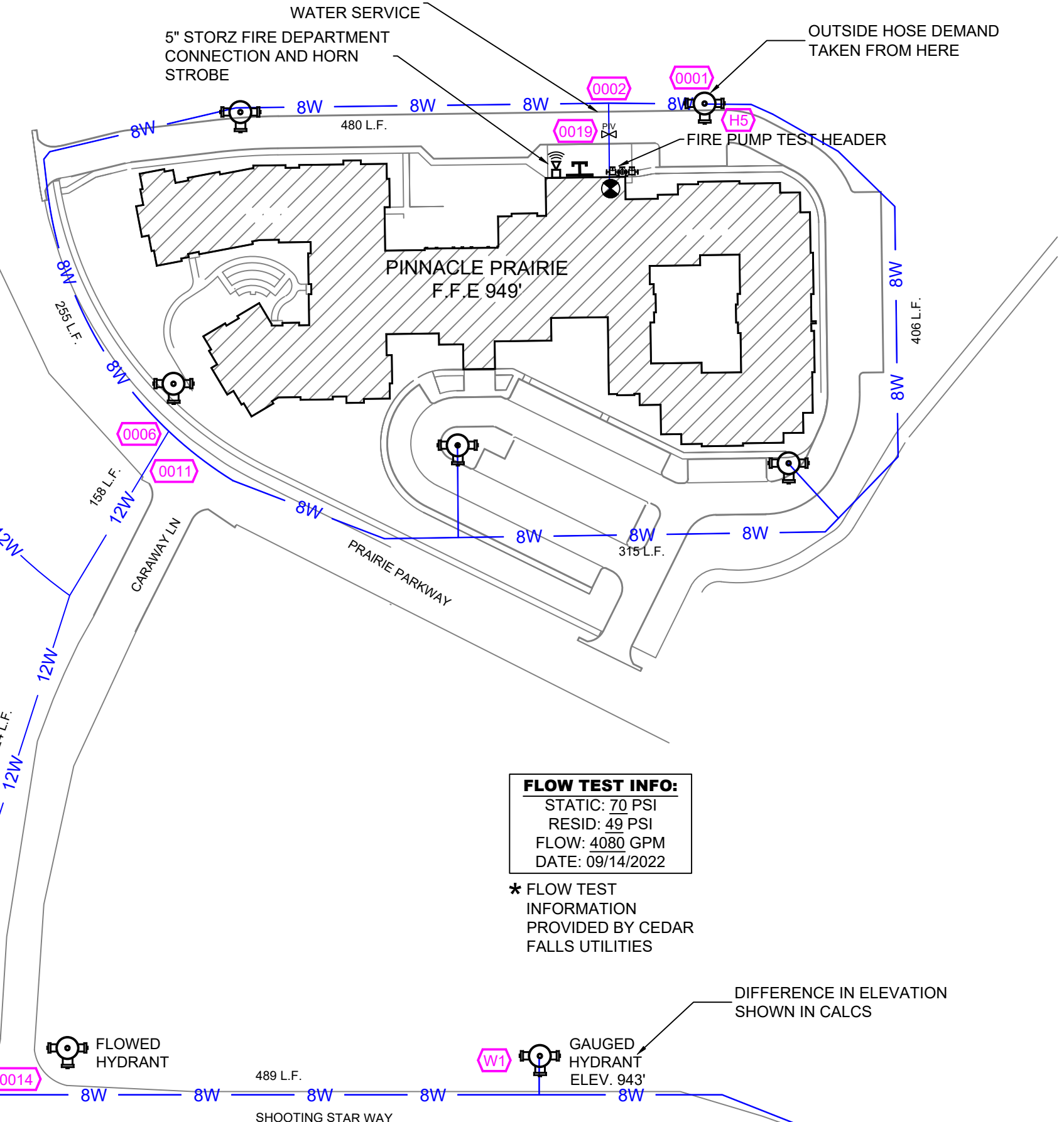
MANUAL WET STANDPIPE
LOCATION: 3RD FLOOR STAIR A&B
REQUIRED FLOW: 750GPM
OUTLET PSI: 100
REQUIRED INLET PSI: 166.4

STANDPIPE DEMAND PLACARD

Table with columns: SYM, CNT, POSITION, FINISH, TEMP, K, NPT, SIN, MFG, MODEL#, ESCUTCHEON. Lists various pipe and fitting items.

SPRINKLER HEAD LEGEND

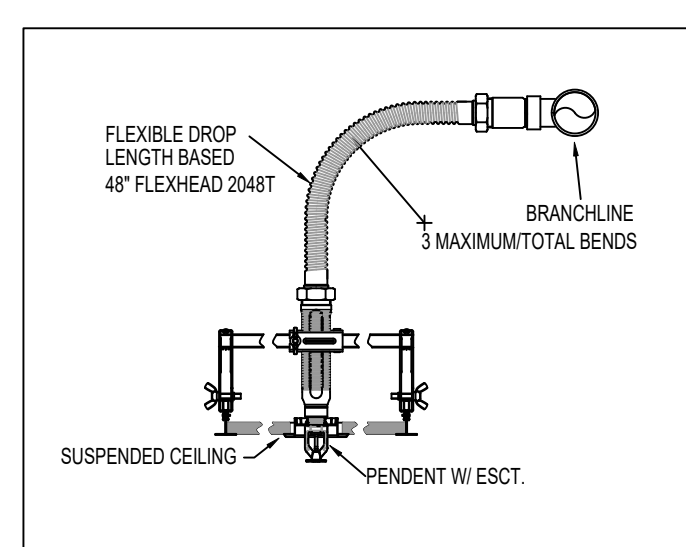
TIDYPIPE LEGEND showing symbols for WET SYSTEM BLACK STEEL PIPING, DRY SYSTEM BLACK STEEL PIPING, CPVC BLAZEMASTER PIPING, WET STANDPIPE BLACK STEEL PIPING. Includes notes on hanger spacing for NFPA 13 steel and CPVC pipe.



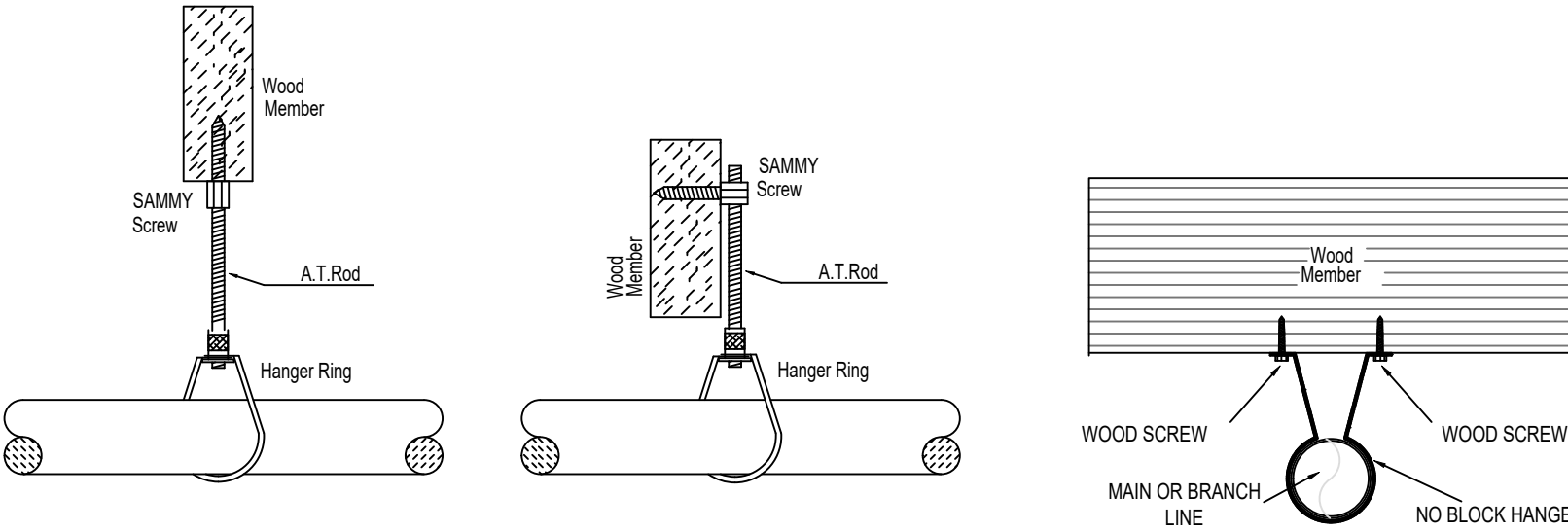
SITE PLAN
1"=100'

SPRINKLER SYSTEM - GENERAL INFORMATION FOR PINNACLE PRAIRIE (CEDAR FALLS, IA). Includes fields for occupancy class, riser storage, and test results.

GENERAL INFORMATION SIGN



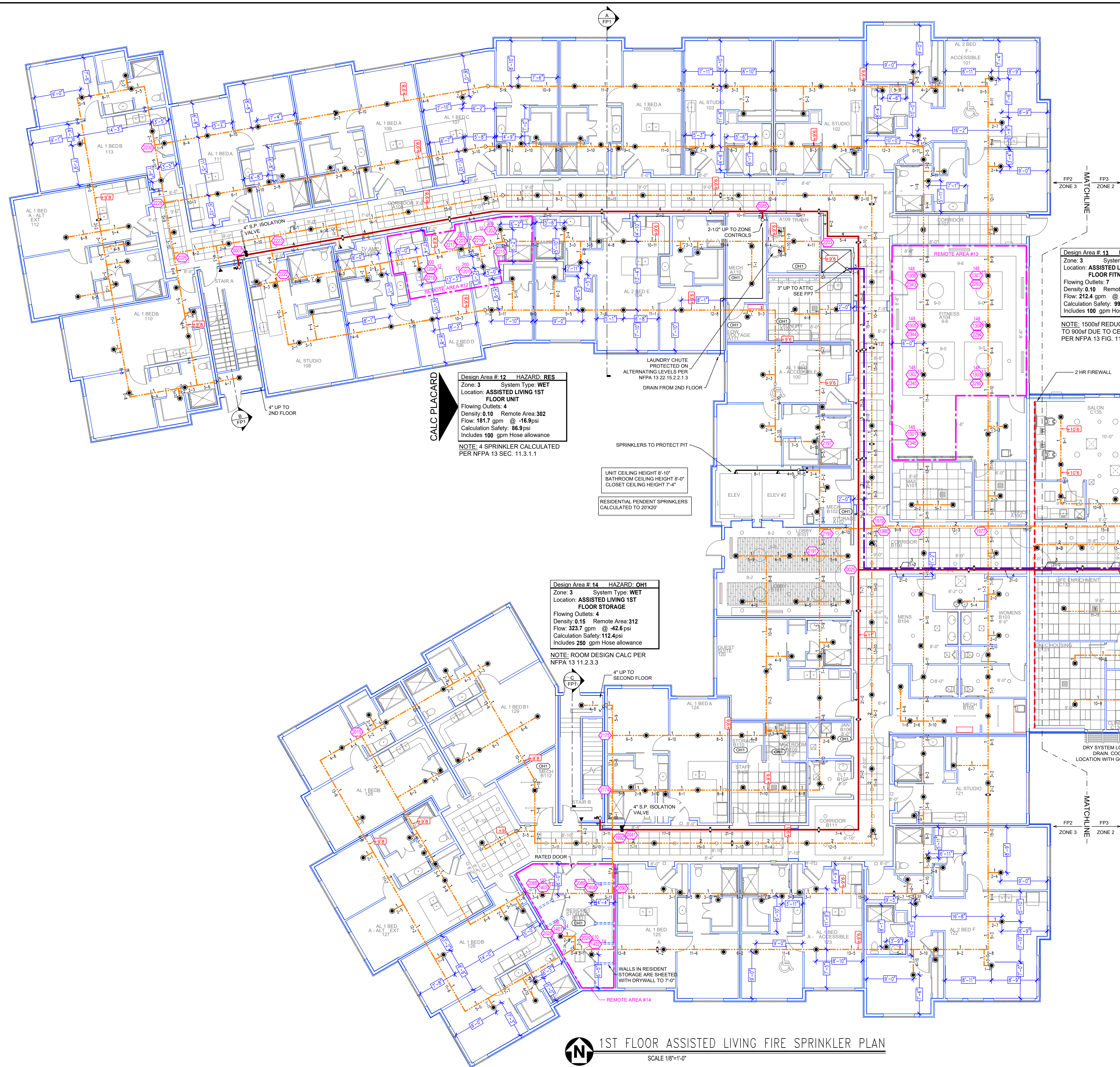
FLEXHEAD DETAIL



HANGER DETAILS

NOTE: SYSTEM PRESSURE EXCEEDS 100 PSI. HANGER SUPPORTING PIPE SUPPLYING AN END SPRINKLER IN THE PENDENT POSITION SHALL BE OF A TYPE THAT PREVENTS UPWARD MOVEMENT AND SHALL BE WITHIN 12" OF THE END SPRINKLER OR DROP NIPPLE

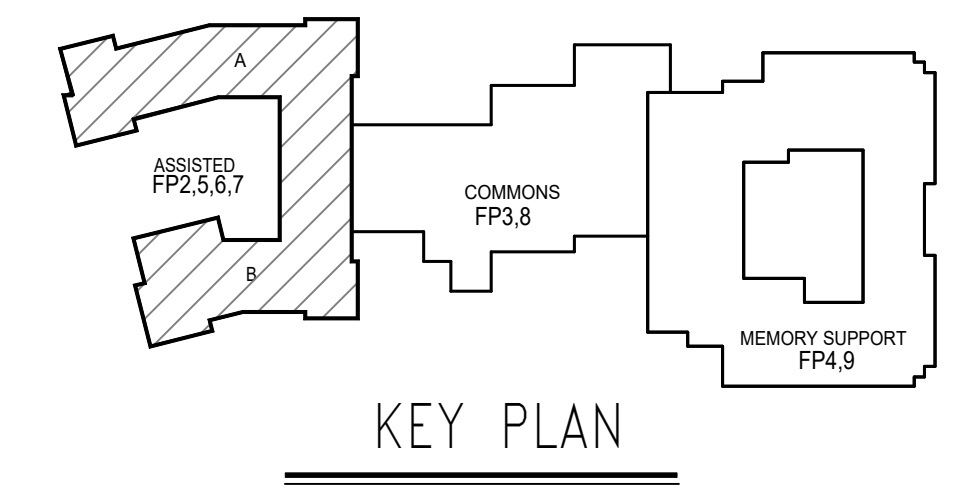
Table with columns: NO., DATE, REVISION, DRY SYSTEM INFO, STOCKLIST INFO, WATER SUPPLY, APPROVALS, SPRINKLER TYPE, FINISH, ESC., SIN, MODEL, NPT, K, TEMP, SYM, QTY, SYSTEM TYPE, SCALE, TOTAL SPRINKLERS THIS DRAWING, PIPE SIZED, CONTRACT NUMBER. Includes project manager information and a graphical scale.



Design Area #12 HAZARD, RES
 Zone: 3 System Type: WET
 Location: ASSISTED LIVING 1ST FLOOR UNIT
 Flowing Outlets: 4
 Density: 0.10 Remote Area: 302
 Flow: 181.7 gpm @ -16.9psi
 Calculation Safety: 86.9psi
 Includes 100 gpm Hose allowance
 NOTE: 4 SPRINKLER CALCULATED PER NFPA 13 SEC. 11.3.1.1

Design Area #13 HAZARD, LH
 Zone: 3 System Type: WET
 Location: ASSISTED LIVING 1ST FLOOR FITNESS
 Flowing Outlets: 7
 Density: 0.10 Remote Area: 907
 Flow: 212.4 gpm @ -29 psi
 Calculation Safety: 99 psi
 Includes 100 gpm Hose allowance
 NOTE: 1500sf REDUCED BY 40% TO 900sf DUE TO CEILING HEIGHT PER NFPA 13 FIG. 11.2.3.2.3.1

Design Area #14 HAZARD, OHI
 Zone: 3 System Type: WET
 Location: ASSISTED LIVING 1ST FLOOR STORAGE
 Flowing Outlets: 4
 Density: 0.15 Remote Area: 312
 Flow: 323.7 gpm @ -42.6psi
 Calculation Safety: 112.4psi
 Includes 250 gpm Hose allowance
 NOTE: ROOM DESIGN CALC PER NFPA 13 11.2.3.3



KEY PLAN

TIDYPIPE LEGEND

- WET SYSTEM BLACK STEEL PIPING
- DRY SYSTEM BLACK STEEL PIPING
- CPVC BLAZEMASTER PIPING
- WET STANDPIPE BLACK STEEL PIPING

SPRINKLER HEAD LEGEND

SYM	CRY	POSITION	FINISH	TEMP	K	NPT	SRN	MFG	MODEL#	ESCUTCHEON
123	1	SIDEWALL	WHITE	165	4.00	1/2"	RA4885	RELIABLE	RFS	CONCEALED
532	1	PENDENT	WHITE	165	4.00	1/2"	RA0916	RELIABLE	RFC	CONCEALED
8	1	SIDEWALL	WHITE	165	8.00	3/4"	RA4882	RELIABLE	F1FR80	SEMI-RECESS
35	1	SIDEWALL	WHITE	165	5.60	1/2"	RA5035	RELIABLE	G6	CONCEALED
39	1	UPRIGHT	BRASS	200	5.60	1/2"	RA1425	RELIABLE	F1FR66	N/A
368	1	PENDENT	WHITE	212	5.60	1/2"	RA3415	RELIABLE	G5	CONCEALED
8	1	PENDENT	WHITE	212	5.60	1"	RA5114	RELIABLE	G5 DRY	CONCEALED
78	1	UPRIGHT	BRASS	212	5.60	1/2"	RA5626	RELIABLE	AH56	N/A
56	1	SPRING	BRASS	212	5.60	1/2"	RA5626	RELIABLE	AH56	N/A
60	1	UPRIGHT	BRASS	212	8.00	3/4"	RA5622	RELIABLE	DD80-6	N/A
11	1	SPRING	BRASS	212	8.00	3/4"	RA5622	RELIABLE	DD80-6	N/A
15	1	UPRIGHT	BRASS	212	3.60	1/2"	RA5625	RELIABLE	DS56	N/A
142	1	UPRIGHT	BRASS	230	5.60	1/2"	TY3190	Typ	CC-3	N/A
8	1	UPRIGHT	BRASS	212	8.00	3/4"	RA5622	RELIABLE	DD80-27	N/A
3	1	UPRIGHT	BRASS	286	5.60	1/2"	RA1425	RELIABLE	F1FR56	N/A
1704	TOTAL									

1ST FLOOR ASSISTED LIVING FIRE SPRINKLER PLAN
 SCALE 1/8"=1'-0"

IT IS THE RESPONSIBILITY OF THE OWNER TO PROVIDE THE HEAT REQUIRED TO MAINTAIN A MINIMUM TEMPERATURE OF 40°F IN THE STRUCTURE TO PREVENT FREEZING OF ANY WATER IN THE SPRINKLER SYSTEM.

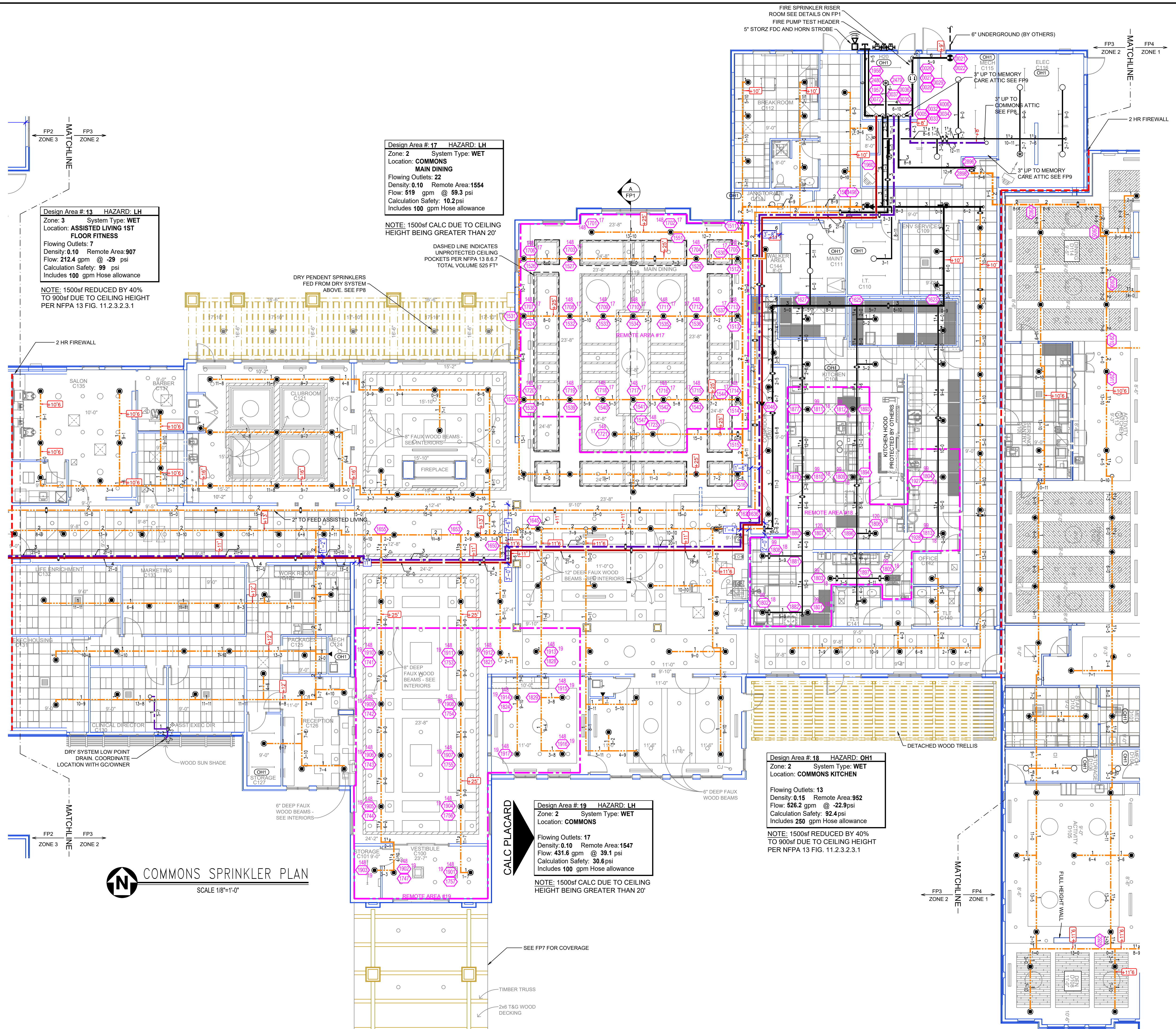
NO.	DATE	REVISION	DRY SYSTEM INFO	STOCKLIST INFO	WATER SUPPLY	APPROVALS	SPRINKLER TYPE	FINISH	ESC.	SRN	MODEL	NPT	K	TEMP	SYM	QTY	SYSTEM TYPE	SCALE	TOTAL SPRINKLERS THIS PROJECT	PIPE SIZED	CONTRACT NUMBER
			CAPACITY: 777 GALLONS	COLOR CODE: 777	STATIC: 70 P.S.I.	OWNER											WET	1/8" = 1'-0"	1704	HYDRAULIC CALC	
			NEED TO MEET AS SEC. 777	LINE NO. 77 10 77	RESIDUAL: 49 P.S.I.	CITY												DATE			
			DOOR RECD: 777	MAN. NO. 77 10 77	FLOW: 4000 GPM	TEST DATE: 09/14/2023												03/31/2023			
			AIR COMP MANF: 777	BUY AMERICAN: 777																	
			AIR COMP MODEL: 777	PIPE WALL SCHEDULE	FIRE PUMP																
			AIR COMP SIZE: 777	LINER: 1040	RATED PRESSURE: 75 P.S.I.																
			AIR COMP VOLT: 777	MAINS: 10	RATED FLOW: 800 GPM																
				SPECIALS																	
TOTAL SPRINKLERS THIS DRAWING 777																					

PROJECT MANAGER:
 N.I.C.E.T. CERTIFIED FIRE SPRINKLER SYSTEM DESIGNERS
 SYSTEM DESIGNED BY:
 INSURANCE AUTHORITY REFERENCE NUMBER:

GRAPHICAL SCALE
 2' 4' 6' 8' 10' 12' 14' 16' 18' 20'

CONTRACT NAME
**Pinnacle Prairie
 Cedar Falls, IA**

SHEET **FP2** OF **9**



Design Area # 13 HAZARD: LH
 Zone: 3 System Type: WET
 Location: ASSISTED LIVING 1ST FLOOR FITNESS
 Flowing Outlets: 7
 Density: 0.10 Remote Area 907
 Calculation Safety: 99 psi
 Includes 100 gpm Hose allowance
 NOTE: 1500sf REDUCED BY 40% TO 900sf DUE TO CEILING HEIGHT PER NFPA 13 FIG. 11.2.3.2.3.1

Design Area # 17 HAZARD: LH
 Zone: 2 System Type: WET
 Location: COMMONS MAIN DINING
 Flowing Outlets: 22
 Density: 0.10 Remote Area 1554
 Flow: 519 gpm @ 59.3 psi
 Calculation Safety: 10.2 psi
 Includes 100 gpm Hose allowance
 NOTE: 1500sf CALC DUE TO CEILING HEIGHT BEING GREATER THAN 20'

DASHED LINE INDICATES UNPROTECTED CEILING POCKETS PER NFPA 13 & 6.7 TOTAL VOLUME 525 FT³

Design Area # 19 HAZARD: LH
 Zone: 2 System Type: WET
 Location: COMMONS
 Flowing Outlets: 17
 Density: 0.10 Remote Area 1547
 Flow: 431.6 gpm @ 39.1 psi
 Calculation Safety: 30.8 psi
 Includes 100 gpm Hose allowance
 NOTE: 1500sf CALC DUE TO CEILING HEIGHT BEING GREATER THAN 20'

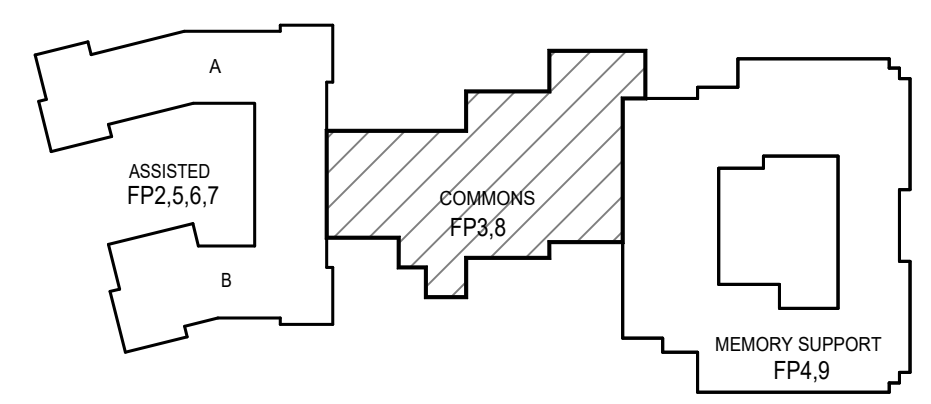
Design Area # 18 HAZARD: OH1
 Zone: 2 System Type: WET
 Location: COMMONS KITCHEN
 Flowing Outlets: 13
 Density: 0.15 Remote Area 952
 Flow: 526.2 gpm @ 22.9 psi
 Calculation Safety: 92.4 psi
 Includes 250 gpm Hose allowance
 NOTE: 1500sf REDUCED BY 40% TO 900sf DUE TO CEILING HEIGHT PER NFPA 13 FIG. 11.2.3.2.3.1

SYM	QTY	POSITION	FINISH	TEMP	K	NPT	SN	MFR.	MODEL#	ESL/OUTCHECK
532	1	SIDEWALL	WHITE	165	4.20	1/2"	RA6835	RELIABLE	RFC	CONCEALED
8	1	SIDEWALL	WHITE	165	4.90	1/2"	RA6816	RELIABLE	RFC	CONCEALED
35	1	SIDEWALL	WHITE	165	5.00	3/4"	RA6822	RELIABLE	F1FR80	SEMI-RECESS
35	1	SIDEWALL	WHITE	165	5.00	1/2"	RA6035	RELIABLE	GG	CONCEALED
39	1	UPRIGHT	BRASS	200	5.00	1/2"	RA1425	RELIABLE	F1FR56	N/A
366	1	PENDENT	WHITE	212	5.00	1/2"	RA3415	RELIABLE	QS	CONCEALED
8	1	PENDENT	WHITE	212	5.00	1"	RA5114	RELIABLE	QS DRY	CONCEALED
78	1	UPRIGHT	BRASS	212	5.00	1/2"	RA5626	RELIABLE	AH56	N/A
56	1	SFRIG	BRASS	212	5.00	1/2"	RA6826	RELIABLE	AH56	N/A
60	1	UPRIGHT	BRASS	212	8.00	3/4"	RA6822	RELIABLE	DD80-4	N/A
11	1	SPRIG	BRASS	212	8.00	3/4"	RA6822	RELIABLE	DD80-4	N/A
15	1	UPRIGHT	BRASS	212	5.00	1/2"	RA5626	RELIABLE	DS56	N/A
242	1	UPRIGHT	BRASS	200	5.00	1/2"	TY3199	Type	CC-3	N/A
8	1	UPRIGHT	BRASS	212	8.00	3/4"	RA5602	RELIABLE	DD80-27	N/A
3	1	UPRIGHT	BRASS	288	5.00	1/2"	RA1425	RELIABLE	F1FR56	N/A
1704 TOTAL										

SPRINKLER HEAD LEGEND

- WET SYSTEM BLACK STEEL PIPING
- DRY SYSTEM BLACK STEEL PIPING
- CPIVC BLACKMASTER PIPING
- WET STANDPIPE BLACK STEEL PIPING

TIDYPIPE LEGEND

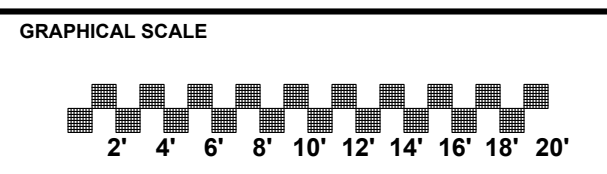


KEY PLAN

IT IS THE RESPONSIBILITY OF THE OWNER TO PROVIDE THE HEAT REQUIRED TO MAINTAIN A MINIMUM TEMPERATURE OF 40°F IN THE STRUCTURE TO PREVENT FREEZING OF ANY WATER IN THE SPRINKLER SYSTEM.

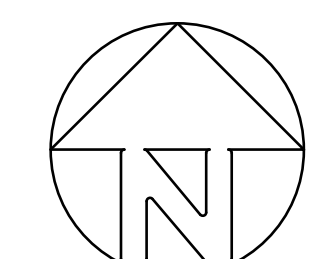
NO.	DATE	REVISION	DRY SYSTEM INFO	STOCKLIST INFO	WATER SUPPLY	APPROVALS	SPRINKLER TYPE	FINISH	ESC.	SN	MODEL	NPT	K	TEMP	SYM	QTY	SYSTEM TYPE	SCALE	TOTAL SPRINKLERS THIS PROJECT	PIPE SIZED	CONTRACT NUMBER
			CAPACITY: 777 GALLONS	COLOR CODE: 777	STATIC: 70 P.S.I.	OWNER:											WET	1/8" = 1'-0"	1704	HYDRAULIC CALC	
			REQ'D TO MEET 49 SEC.	LINE NO. 77 77 77	RESIDUAL: 49 P.S.I.	CITY:												DATE			
			DOCS REQ'D: 777	MAN. NO. 77 77 77	FLOW: 4000 GPM	TEST DATE: 09/14/2023												03/31/2023			
			AIR COMP MANF: 777	BUY AMERICAN: 777																	
			AIR COMP MODEL: 777	PIPE WALL SCHEDULE	FIRE PUMP																
			AIR COMP SIZE: 777	LINER: 1040	RATED PRESSURE: 75 P.S.I.																
			AIR COMP VOLT: 777	MAINS: 10	RATED FLOW: 800 GPM																
				SPECIALS																	
TOTAL SPRINKLERS THIS DRAWING 777																					

PROJECT MANAGER:
 N.I.C.E.T. CERTIFIED FIRE SPRINKLER SYSTEM DESIGNERS



GRAPHICAL SCALE
 2' 4' 6' 8' 10' 12' 14' 16' 18' 20'

PROJECT NAME
Pinnacle Prairie
 Cedar Falls, IA



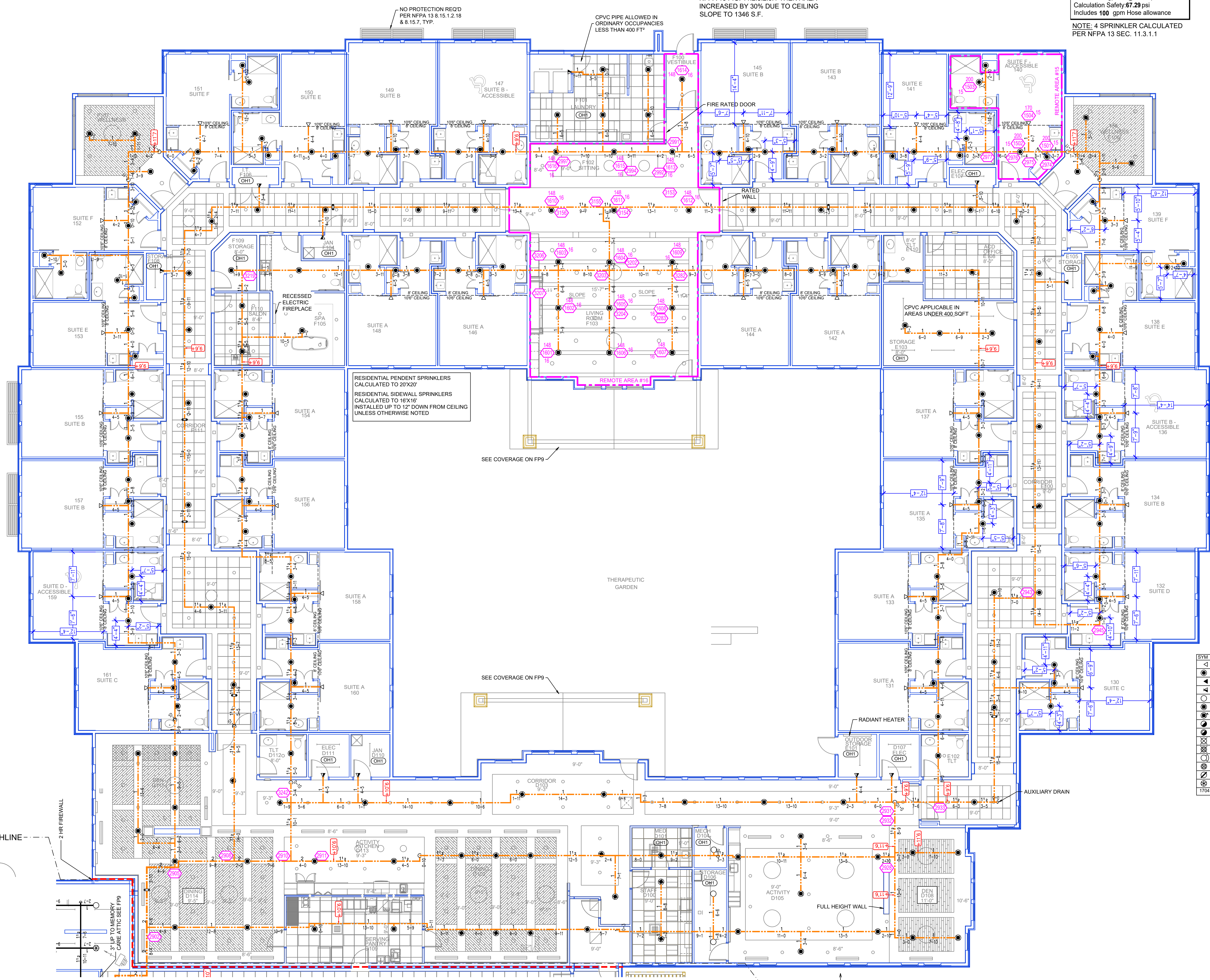
Design Area # 16 HAZARD: LH
 Zone: 1 System Type: WET
 Location: MEMORY CARE LIVING ROOM
 Flowing Outlets: 16
 Density: 0.10 Remote Area: 1390
 Flow: 383.7 gpm @ 42.7 psi
 Calculation Safety: 27 psi
 Includes 100 gpm Hose allowance

NOTE: 1500sf REDUCED BY 31% TO 1035sf DUE TO CEILING HEIGHT PER NFPA 13 FIG. 11.2.3.2.3.1 THEN AREA INCREASED BY 30% DUE TO CEILING SLOPE TO 1346 S.F.

Design Area # 15 HAZARD: LH
 Zone: 1 System Type: WET
 Location: MEMORY CARE UNIT

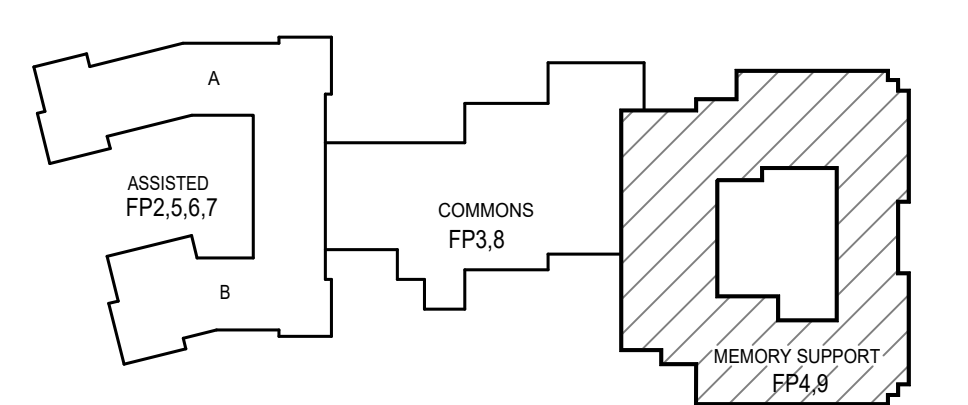
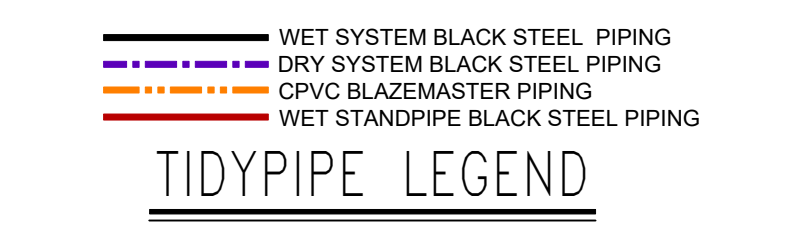
Flowing Outlets: 4
 Density: 0.10 Remote Area: 306
 Flow: 182 gpm @ 2.64 psi
 Calculation Safety: 67.29 psi
 Includes 100 gpm Hose allowance

NOTE: 4 SPRINKLER CALCULATED PER NFPA 13 SEC. 11.3.1.1



SYM	CNT	POSITION	FINISH	TEMP	K	NPT	SIN	MFG	MODEL#	ESCUTCHEON
243	243	SIDEWALL	WHITE	165	4.20	1/2"	RA4835	RELIABLE	RFS	CONCEALED
132	132	PENDENT	WHITE	165	4.80	1/2"	RA5010	RELIABLE	RFC	CONCEALED
8	8	SIDEWALL	WHITE	155	8.00	3/4"	RA4862	RELIABLE	FFR80	SEMI-RECESS
35	35	SIDEWALL	WHITE	165	5.60	1/2"	RA5035	RELIABLE	G6	CONCEALED
39	39	UPRIGHT	BRASS	200	5.60	1/2"	RA1425	RELIABLE	F.FR55	N/A
306	306	PENDENT	WHITE	212	5.60	1/2"	RA3415	RELIABLE	S5	CONCEALED
8	8	PENDENT	WHITE	212	5.60	1"	RA5114	RELIABLE	G5 DRY	CONCEALED
15	15	UPRIGHT	BRASS	212	5.60	1/2"	RA5628	RELIABLE	AH55	N/A
56	56	SPRINK	BRASS	212	5.60	1/2"	RA5628	RELIABLE	AH56	N/A
60	60	UPRIGHT	BRASS	212	8.00	3/4"	RA5622	RELIABLE	DD80-6	N/A
11	11	SPRINK	BRASS	212	8.00	3/4"	RA5622	RELIABLE	DD80-6	N/A
15	15	UPRIGHT	BRASS	212	5.60	1/2"	RA5625	RELIABLE	DS56	N/A
242	242	UPRIGHT	BRASS	200	5.60	1/2"	TY3189	TYPS	CC-3	N/A
8	8	UPRIGHT	BRASS	212	8.00	3/4"	RA5622	RELIABLE	DD80-27	N/A
3	3	UPRIGHT	BRASS	206	5.60	1/2"	RA1425	RELIABLE	F.FR56	N/A
1704 TOTAL										

SPRINKLER HEAD LEGEND



KEY PLAN

MEMORY SUPPORT SPRINKLER PLAN
 SCALE 1/8"=1'-0"

IT IS THE RESPONSIBILITY OF THE OWNER TO PROVIDE THE HEAT REQUIRED TO MAINTAIN A MINIMUM TEMPERATURE OF 40°F IN THE STRUCTURE TO PREVENT FREEZING OF ANY WATER IN THE SPRINKLER SYSTEM.

NO.	DATE	REVISION	DRY SYSTEM INFO	STOCKLIST INFO	WATER SUPPLY	APPROVALS	SPRINKLER TYPE	FINISH	ESC.	SIN	MODEL	NPT	K	TEMP	SYM	QTY	SYSTEM TYPE	SCALE	PIPE SIZED	CONTRACT NUMBER
			CAPACITY: 777 GALLONS	COLOR CODE: 777	STATIC: 70 P.S.I.	OWNER:											WET	1/8" = 1'-0"	HYDRAULIC CALC	
			NEEDS TO MEET AS SEC. 777	LINE NO. 77 40 77	RESIDUAL: 49 P.S.I.	CITY:												DATE		
			LOSS REQ'D: 777	MAN. NO. 77 30 77	FLOW: 4000 GPM	TEST DATE: 09/14/2023												03/31/2023	1704	
			AIR COMP MANF.: 777	BUY AMERICAN: 777	FIRE PUMP															
			AIR COMP MODEL: 777	PIPE WALL SCHEDULE																
			AIR COMP SIZE: 777	LINER: 1040	RATED PRESSURE: 75 P.S.I.															
			AIR COMP VOLT: 777	MAINS: 10	RATED FLOW: 800 GPM															
			SPECIALS																	
TOTAL SPRINKLERS THIS DRAWING 166																				

PROJECT MANAGER:
 N.I.C.E.T. CERTIFIED FIRE SPRINKLER SYSTEM DESIGNERS
 SYSTEM DESIGNED BY:
 INSURANCE AUTHORITY REFERENCE NUMBER:

GRAPHICAL SCALE
 2' 4' 6' 8' 10' 12' 14' 16' 18' 20'

CONTRACT NAME
Pinnacle Prairie
 Cedar Falls, IA

SHEET **FP4** OF **9**

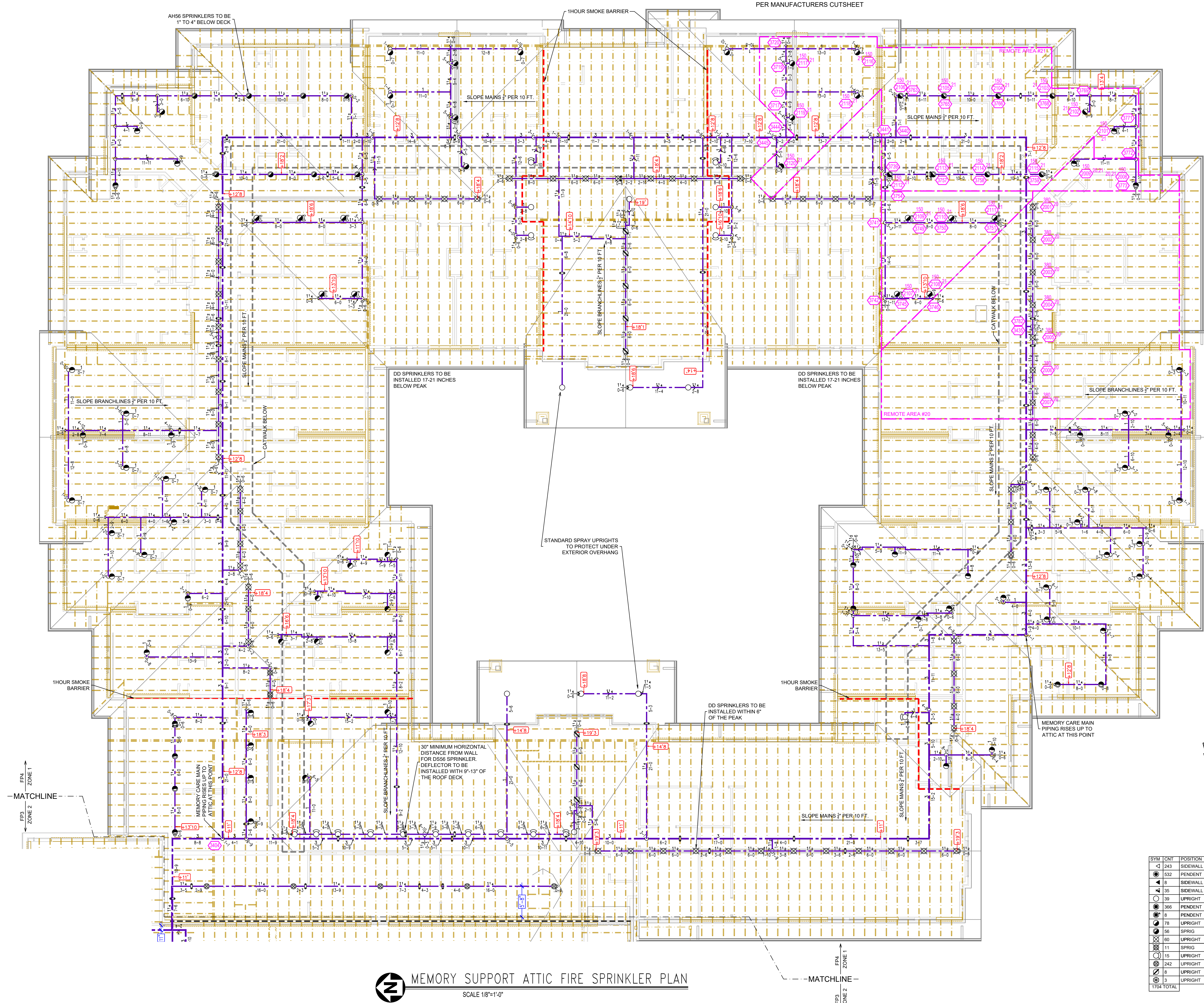
Design Area # 21 HAZARD: LH
 Zone: 8 System Type: DRY
 Location: MEMORY CARE
 ATTIC
 Flowing Outlets: 22
 Density: 0.10 Remote Area: 2007
 Flow: 618.8 gpm @ 50.4 psi
 Calculation Safety: 19 psi
 Includes 100 gpm Hose allowance

NOTE: CALCULATED ALL AH SPRINKLERS IN A 1950 S.F. AREA PER MANUFACTURERS CUTSHEET

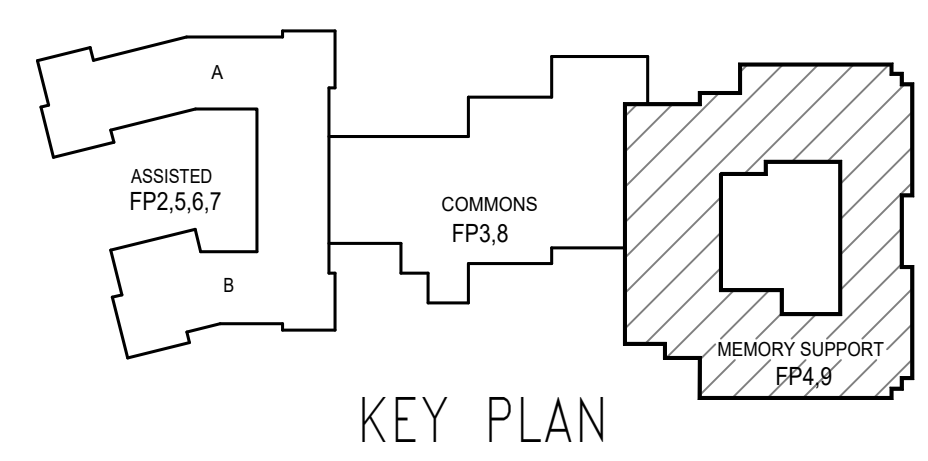
CALC PLACARD

Design Area # 20 HAZARD: LH
 Zone: 8 System Type: DRY
 Location: MEMORY CARE
 ATTIC
 Flowing Outlets: 9
 Density: 0.10 Remote Area: 2452
 Flow: 470.5 gpm @ 49.3 psi
 Calculation Safety: 20.4 psi
 Includes 100 gpm Hose allowance

NOTE: 7 DD SPRINKLERS AT PEAK AND 2 DD SPRINKLERS IN DORMER PER MANUFACTURERS CUT SHEET.



TIDYPIPE LEGEND
 WET SYSTEM BLACK STEEL PIPING
 DRY SYSTEM BLACK STEEL PIPING
 CPVC BLAZEMASTER PIPING
 WET STANDPIPE BLACK STEEL PIPING



MEMORY SUPPORT ATTIC FIRE SPRINKLER PLAN
 SCALE 1/8"=1'-0"

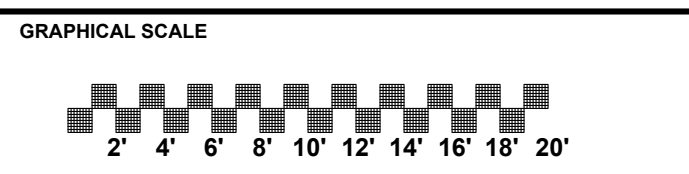
SYM	QTY	POSITION	FINISH	TEMP	K	NPT	SIN	MFG.	MODEL#	ESCUTOCHRON
243	1	SIDEWALL	WHITE	165	4.20	1/2"	RA1835	RELIABLE	RFS	CONCEALED
532	1	PENDENT	WHITE	165	4.20	1/2"	RA0216	RELIABLE	RFC	CONCEALED
8	1	SIDEWALL	WHITE	155	8.00	3/4"	RA1862	RELIABLE	F1FR80	SEMI-RECESS
35	1	SIDEWALL	WHITE	165	5.60	1/2"	RA5035	RELIABLE	G6	CONCEALED
39	1	UPRIGHT	BRASS	200	5.60	1/2"	RA1425	RELIABLE	F1FR56	N/A
366	1	PENDENT	WHITE	212	5.60	1/2"	RA3415	RELIABLE	G5	CONCEALED
8	1	PENDENT	WHITE	212	5.60	1"	RA5114	RELIABLE	GS DRY	CONCEALED
78	1	UPRIGHT	BRASS	212	5.60	1/2"	RA5026	RELIABLE	AH56	N/A
56	1	SPRING	BRASS	212	5.60	1/2"	RA5025	RELIABLE	AH56	N/A
60	1	UPRIGHT	BRASS	212	8.00	3/4"	RA5022	RELIABLE	DD56-6	N/A
11	1	SPRING	BRASS	212	8.00	3/4"	RA5022	RELIABLE	DD56-6	N/A
15	1	UPRIGHT	BRASS	212	5.60	1/2"	RA5025	RELIABLE	DS56	N/A
242	1	UPRIGHT	BRASS	200	5.60	1/2"	TY3199	TYPO	CC-3	N/A
8	1	UPRIGHT	BRASS	212	8.00	3/4"	RA5022	RELIABLE	DD56-27	N/A
3	1	UPRIGHT	BRASS	286	5.60	1/2"	RA1425	RELIABLE	F1FR56	N/A
TOTAL										

SPRINKLER HEAD LEGEND

IT IS THE RESPONSIBILITY OF THE OWNER TO PROVIDE THE HEAT REQUIRED TO MAINTAIN A MINIMUM TEMPERATURE OF 40°F IN THE STRUCTURE TO PREVENT FREEZING OF ANY WATER IN THE SPRINKLER SYSTEM.

NO.	DATE	REVISION	DRY SYSTEM INFO	STOCKLIST INFO	WATER SUPPLY	APPROVALS	SPRINKLER TYPE	FINISH	ESC.	SIN	MODEL	NPT	K	TEMP	SYM	QTY
			CAPACITY: 777 GALLONS	COLOR CODE: 777	STATIC: 70 P.S.I.	OWNER:										
			HEADS TO MEET 49 SEC.	LINE NO. 77 45 77	RESIDUAL: 49 P.S.I.	CITY:										
			LOSS RESID: 777	MAIN NO. 77 10 77	FLOW: 400 GPM											
			AIR COMP MANF: 777	BUY AMERICAN: 777	TEST DATE: 09/14/2022											
			AIR COMP MODEL: 777	PIPE WALL SCHEDULE	FIRE PUMP											
			AIR COMP SIZE: 777	LINER: 1040	RATED PRESSURE: 75 P.S.I.											
			AIR COMP VOLT: 777	MAINS: 10	RATED FLOW: 800 GPM											
				SPECIALS												

SYSTEM TYPE	SCALE	TOTAL SPRINKLERS THIS PROJECT	PIPE SIZED	CONTRACT NUMBER
DRY	1/8" = 1'-0"	1704	HYDRAULIC CALC	
PROJECT MANAGER:				
N.I.C.E.T. CERTIFIED FIRE SPRINKLER SYSTEM DESIGNERS				
SYSTEM DESIGNED BY:				
INSURANCE AUTHORITY REFERENCE NUMBER:				



Pinnacle Prairie
 Cedar Falls, IA

