

KEY PLAN

GARAGE P1 AREA A FIRE SPRINKLER PLAN
SCALE= 1/8" : 1'-0"

KEY PLAN

Design Area # 19 HAZARD OH1
Zone: 2 System Type: WET
Location: GARAGE P1 ENTRY

Flowing Outlets: 8
Density: 0.15 Remote Area: 1432
Flow: 580.4 gpm @ 49.9 psi
Calculation Safety: 16.5 psi
Includes 250 gpm Hose allowance

NOTE:
1500 S.F. REMOTE AREA USED DUE TO THE USE OF STANDARD RESPONSE SPRINKLERS.

Design Area # 12 HAZARD OH1
Zone: 2 System Type: WET
Location: GARAGE P1

Flowing Outlets: 6
Density: 0.15 Remote Area: 1566
Flow: 603.9 gpm @ 58.8 psi
Calculation Safety: 7.5 psi
Includes 250 gpm Hose allowance

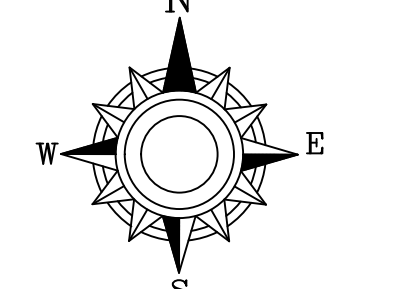
NOTE:
1500 S.F. REMOTE AREA USED DUE TO THE USE OF STANDARD RESPONSE SPRINKLERS. SPACED AT A MAX OF 18x18'

GARAGE P1 AREA B FIRE SPRINKLER PLAN
SCALE= 1/8" : 1'-0"

PIPE LEGEND

SYM	CNT	POSITION	FINISH	TEMP	K	NPT	SIN	MPG	MODEL#	ESCU/SECTION
●	1040	PENDENT	WHITE	150°	4.90	1/2"	TY2236	TYCO	LF8	SEMI-RECESSED
●	13	SIDEWALL	WHITE	150°	8.00	3/4"	TY4332	TYCO	TY-FRB EC	SEMI-RECESSED
●	238	PENDENT	WHITE	200°	5.60	1/2"	TY333	TYCO	TY-FRB	SEMI-RECESSED
●	448	SIDEWALL	WHITE	150°	4.00	1/2"	VK486	VKING	VK486	SEMI-RECESSED
●	92	SIDEWALL	WHITE	200°	5.60	1/2"	TY3331	TYCO	TY-FRB	SEMI-RECESSED
●	287	UPRIGHT	BRASS	286°	14.00	3/4"	TY6137	TYCO	EC-14	N/A
●	6	UPRIGHT/SPRNG	BRASS	286°	14.00	3/4"	TY6137	TYCO	EC-14	N/A
●	193	UPRIGHT	WHITE	200°	5.60	1/2"	TY313	TYCO	TY-FRB	N/A
●	18	UPRIGHT	BRASS	200°	5.60	1/2"	TY313	TYCO	TY-FRB	N/A
●	19	UPRIGHT/SPRNG	BRASS	286°	5.60	1/2"	TY3151	TYCO	TY-8	N/A
●	1	SIDEWALL	BRASS	200°	11.20	3/4"	TY3332	TYCO	ELOS/W20	N/A
●	3	SIDEWALL	WHITE	200°	2.80	1/2"	VK333	VKING	VK333	N/A
2313 TOTAL SPRINKLERS										

SPRINKLER HEAD LEGEND



GENERAL NOTES

- SYSTEM INSTALLED PER NFPA 13 (2015 EDITION) AND STATE FIRE MARSHAL.
- ALL SPRINKLER HEADS SHALL BE UL LISTED.
- MINIMUM PIPE SIZE SHALL BE 1" NOMINAL PIPE SIZE.
- SHORT RISE FITTINGS SHALL BE WELDED OUTLETS & GROOVED.
- ALL WELDING PER NFPA 54 SHALL BE DONE BEFORE APPROVED SHOP DRAWINGS.
- DRAWINGS CONTAINS USE TO BE RELEASED PRIOR TO FABRICATION AND INSTALLATION BY SPRINKLER CONTRACTOR.
- HIGH TEMPERATURE HEADS ARE TO BE ILLUMINATED WHERE REQUIRED.
- HANDS ON TO BE USED TO REMOVE SPRINKLER HEADS.
- ELECTRICAL WIRING, ALARM DETECTION AND SUPERVISORY BY OWNER.
- WET SYSTEM PIPING FROM FREEZING.

NO.	REVISIONS	DATE

APPROVAL STAMPS

DATE

NO.

MALCOLM STATION
485 MALCOLM AVE. SE,
MINNEAPOLIS, MN 55414

Contract No: **C22-9**

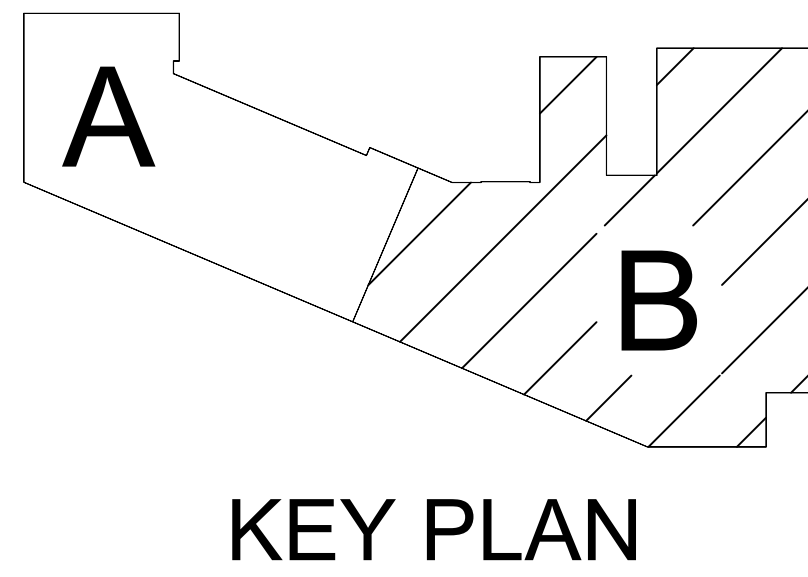
Drawing Date: 11/18/22

Scale: 1/8" = 1'-0"

Drawn By: BCJ

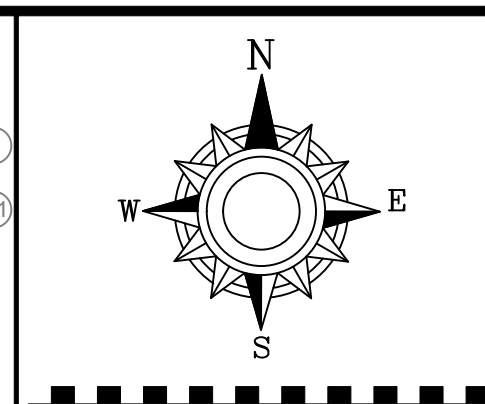
Approval By: STATE FIRE MARSHAL DIV.

SHEET NO. **FP 3 of 10**



Design Area # 14 HAZARD: OH2
 Zone: 3 System Type: WET
 Location: RETAIL
 183
 Flowing Outlets: 9
 Density: 0.20 Remote Area: 975
 Flow: 455.5 gpm @ 61.3 psi
 Calculation Safety: 5.7 psi
 Includes 250 gpm Hose allowance
 NOTE: 1500 S.F. REMOTE AREA USED DUE TO THE USE OF STANDARD RESPONSE SPRINKLERS.

Design Area # 10 HAZARD: OH1
 Zone: 3 System Type: WET
 Location: GARAGE ENTRY
 138
 Flowing Outlets: 8
 Density: 0.15 Remote Area: 1574
 Flow: 508.3 gpm @ 57.8 psi
 Calculation Safety: 9 psi
 Includes 250 gpm Hose allowance
 NOTE: 1500 S.F. REMOTE AREA USED DUE TO THE USE OF STANDARD RESPONSE SPRINKLERS.



- GENERAL NOTES**
1. SYSTEM INSTALLED PER NFPA 13 2016 EDITION, AND STATE FIRE MARSHAL'S APPROVAL.
 2. MINIMUM PIPE SIZE SHALL BE 1" NOMINAL PIPE SIZE UNLESS OTHERWISE NOTED.
 3. SHORT RISE FITTINGS SHALL BE WELDED OUTLETS & GROUNDED.
 4. ALL WELDING PER NFPA 13 SHALL BE DONE WITHOUT APPROVED SHOP DRAWINGS.
 5. SPRINKLER HEADS SHALL BE FIELD REARERD PRIOR TO FABRICATION AND INSTALLATION BY SPRINKLER CONTRACTOR.
 6. HIGH TEMPERATURE HEADS ARE TO BE FIELD LOCATED WHERE REQUIRED.
 7. HANDS ON TO THE FIELD TO BE FIELD LOCATED WHERE REQUIRED.
 8. ELECTRICAL WORK, ALARM DETECTION AND SUPERVISORY BY OWNER.
 9. WET SYSTEM PIPING FROM RECEIVING.

APPROVAL STAMPS

NO.	DATE	REVISIONS



PER STATE IFC AMENDMENTS 903.3.1.6 SPRINKLER COVERAGE IS NOT REQUIRED IN VESTIBULES THAT MEET THE FOLLOWING:

- 250 S.F. OR LESS
- IS OF NONCOMBUSTIBLE OR LIMITED COMBUSTIBLE CONSTRUCTION
- HAS GLAZING ALLOWING VISION INTO VESTIBULE
- ONLY PURPOSE IS INGRESS AND EGRESS
- CONTAIN NO FUELED EQUIPMENT, FLAMMABLE OR COMBUSTIBLE LIQUIDS, OR FURNITURE. INCIDENTAL COMBUSTIBLE STORAGE IN THE VESTIBULE IS LIMITED TO FIVE CUBIC FEET OF MATERIAL.

NO COVERAGE REQUIRED ON NON-COMBUSTIBLE PROJECTION ACCORDING TO NFPA 13 SEC. 8.15.7.2 (TYP.)

4" COMBINATION S.P. DN w/ 2" S.P. HOSE VALVE AT MAIN LANDING

2" ZONE CONTROL SEE DETAIL ON THIS PAGE

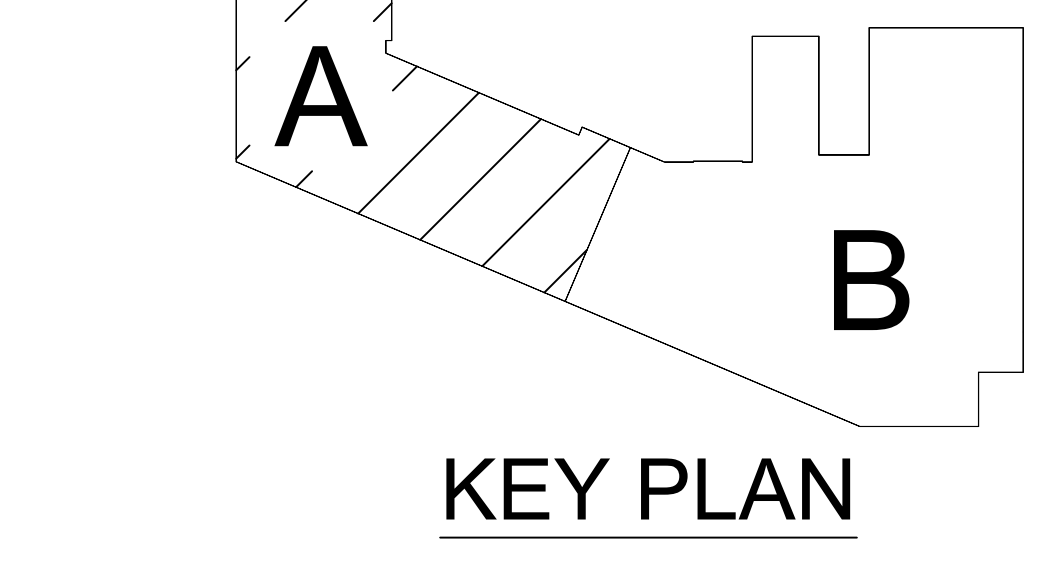
PER STATE IFC AMENDMENTS 903.3.1.6 SPRINKLER COVERAGE IS NOT REQUIRED IN LINEN CLOSETS OR PANTRIES INSIDE OF A DWELLING UNIT THAT ARE 124' OR LESS

SPK PROTECTION NOT REQ'D IN ELEVATOR MACHINE ROOMS OR ELEVATOR SHAFT PER STATE IFC SECTION 903.3.1.6.2 (TYP.)

4" S.P. DN w/ 2" S.P. HOSE VALVE AT MAIN LANDING

NO PROTECTION REQUIRED IN VESTIBULE PER MN FIRE CODE 903.3.1.6.5

EXPOSED DUCTWORK TYP.



1st FLOOR AREA A FIRE SPRINKLER PLAN
 SCALE= 1/8" : 1'-0"

1st FLOOR AREA B FIRE SPRINKLER PLAN
 SCALE= 1/8" : 1'-0"

NOTE:

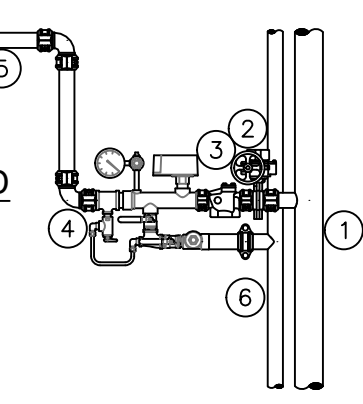
- RESIDENTIAL PENDENT SPRINKLERS IN UNITS SPACED AT A MAX OF 16'16" U.N.O.
- NON-TYPICAL SEE RCP
- RESIDENTIAL SIDEWALL SPRINKLERS IN HALLWAYS & UNITS ARE SPACED AT A MAX OF 16'16" & SET 4" MAX FROM DECK.
- CORRIDOR SCFPTS @ 8'-0"

PIPE LEGEND

—	BLACK STEEL FIRE SPRINKLER PIPING
---	CPVC FIRE SPRINKLER PIPING
---	FIRE SPRINKLER STANDOFF PIPING
---	FIRE DEPARTMENT CONNECTION PIPING

ZONE CONTROL LEGEND

1. FEED MAIN
2. BUTTERFLY VALVE
3. CHECK VALVE
4. RISER MANIFOLD
5. RISER SYSTEM
6. DRAIN RISER



ZONE CONTROL DETAIL
 SCALE= 1/2" : 1'-0"

SPRINKLER HEAD LEGEND

SYM.	CNT.	POSITION	FINISH	TEMP.	K	QPT.	SN.	MFCS	MODEL#	ES/OUT/CH/CON.
●	1040	PENDENT	WHITE	155°	4.50	1/2"	TY228	TYCO	LFI	SEM-RECESSED
●	13	SIDEWALL	WHITE	155°	8.00	3/4"	TY432	TYCO	TY-FRB EC	SEM-RECESSED
●	238	PENDENT	WHITE	200°	5.00	1/2"	TY323	TYCO	TY-FRB	SEM-RECESSED
●	446	SIDEWALL	WHITE	155°	4.00	1/2"	VK486	VIKING	VK486	SEM-RECESSED
●	92	SIDEWALL	WHITE	200°	5.00	1/2"	TY331	TYCO	TY-FRB	SEM-RECESSED
●	287	UPRIGHT	BRASS	288°	14.00	3/4"	TY913	TYCO	EC-14	N/A
●	9	UPRIGHT/SPRIG	BRASS	288°	14.00	3/4"	TY917	TYCO	EC-14	N/A
●	103	UPRIGHT	WHITE	200°	5.00	1/2"	TY313	TYCO	TY-FRB	N/A
●	88	UPRIGHT	BRASS	200°	5.00	1/2"	TY313	TYCO	TY-FRB	N/A
●	18	UPRIGHT/SPRIG	BRASS	288°	5.00	1/2"	TY311	TYCO	TY-FRB	N/A
●	1	SIDEWALL	BRASS	200°	11.20	3/4"	TY532	TYCO	ELOS20	N/A
●	13	SIDEWALL	WHITE	200°	2.80	1/2"	VK333	VIKING	VK333	N/A
●	2313	TOTAL SPRINKLERS								

FIRE PROTECTION PLAN

MALCOLM STATION
 485 MALCOLM AVE. SE,
 MINNEAPOLIS, MN 55414

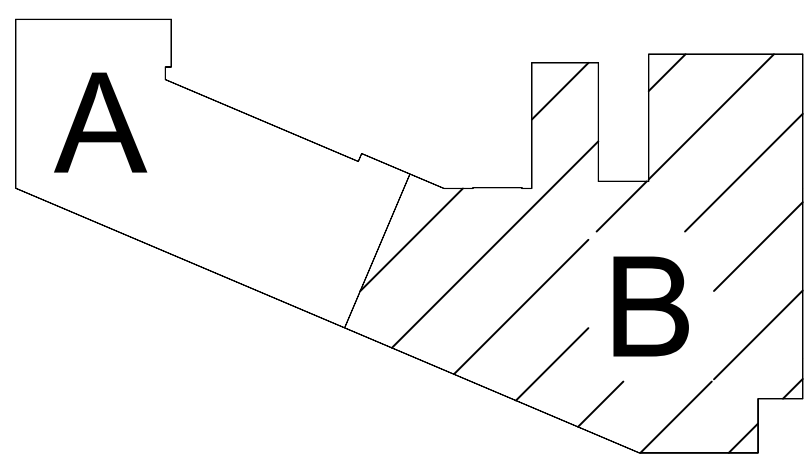
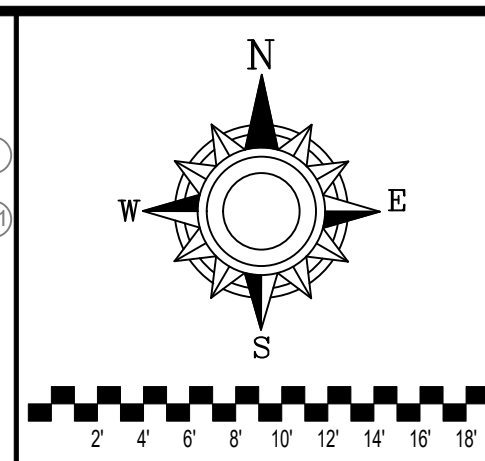
Contract No: **C22-9**

Drawing Date: 11/18/22
 Scale: 1/8" = 1'-0"

Drawn By: BCJ

Approval By: STATE FIRE MARSHAL DIV.

SHEET NO. **FP 4 of 10**



KEY PLAN

Design Area # 11 HAZARD: RES
 Zone: 4 System Type: WET
 Location: 2ND
 Flowing Outlets: 4
 Density: 0.10 Remote Area: 1620
 Flow: 156 gpm @ 28.8 psi
 Calculation Safety: 23.1 psi
 Includes 100 gpm Hose allowance

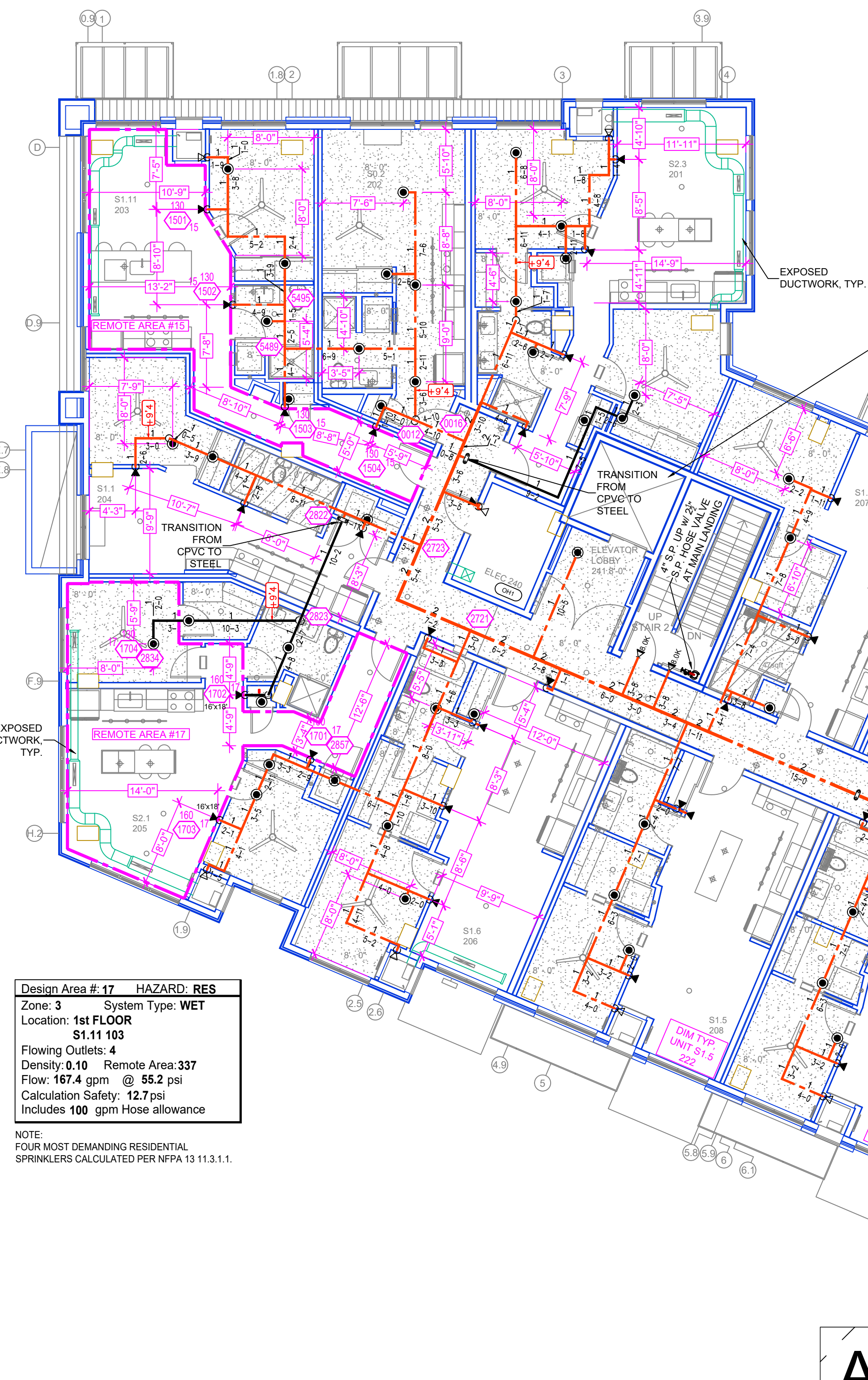
NOTE:
 1500 S.F. REMOTE AREA USED DUE TO THE USE
 OF STANDARD RESPONSE SPRINKLERS.

Design Area # 16 HAZARD: QM1
 Zone: 4 System Type: WET
 Location: APARTMENT CO-WORKING
 270
 Flowing Outlets: 9
 Density: 0.15 Remote Area: 900
 Flow: 398.7 gpm @ 57.1 psi
 Calculation Safety: 10.1 psi
 Includes 250 gpm Hose allowance

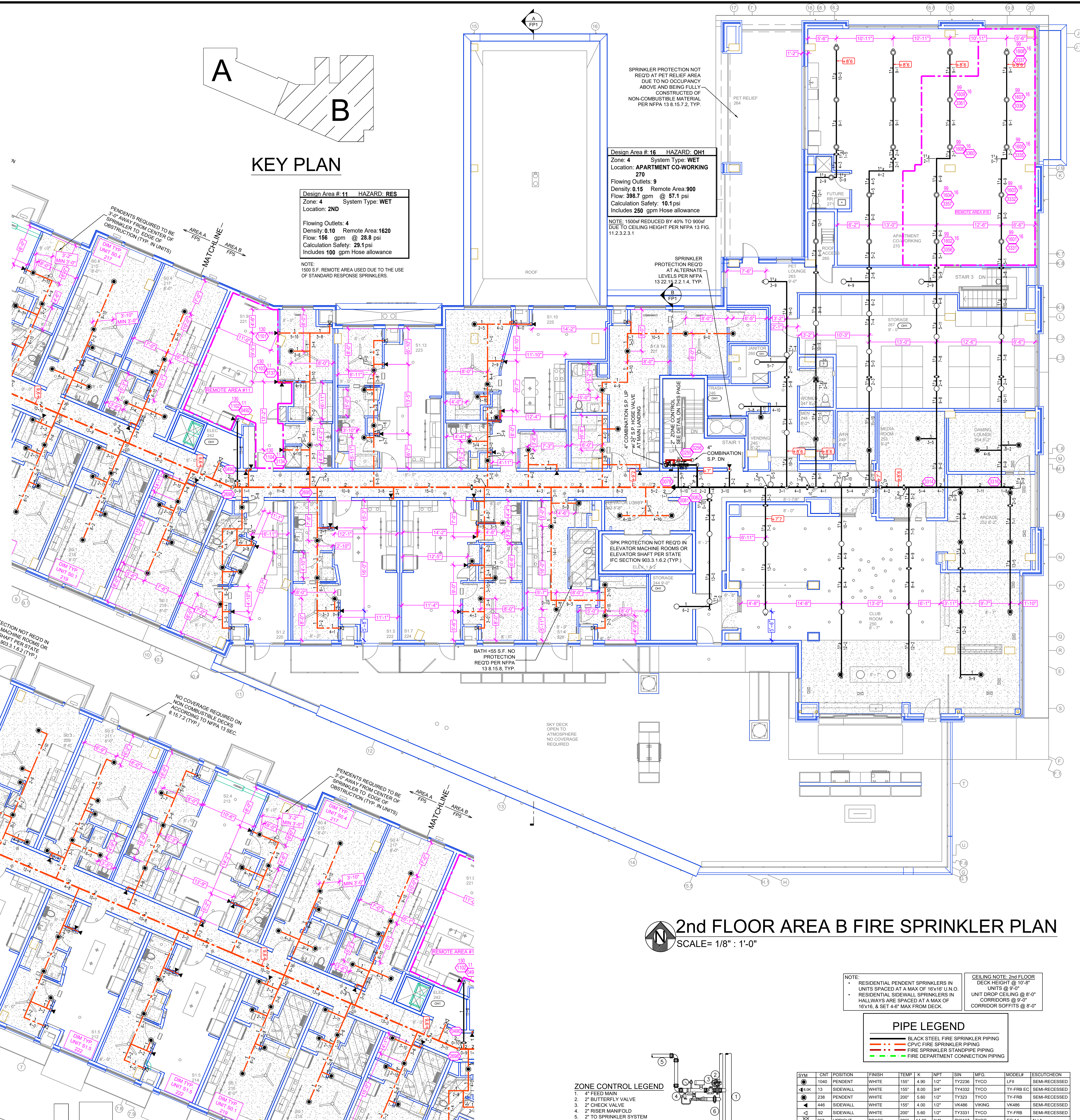
NOTE: 1500sf REDUCED BY 40% TO 900sf
 DUE TO CEILING HEIGHT PER NFPA 13 FIG.
 11.2.3.2.1.1

Design Area # 15 HAZARD: RES
 Zone: 4 System Type: WET
 Location: 2nd FLOOR
 S1.11.203
 Flowing Outlets: 4
 Density: 0.10 Remote Area: 337
 Flow: 158.6 gpm @ 56.7 psi
 Calculation Safety: 12.1 psi
 Includes 100 gpm Hose allowance

NOTE:
 FOUR MOST DEMANDING RESIDENTIAL
 SPRINKLERS CALCULATED PER NFPA 13 11.3.1.1.



2nd FLOOR AREA A FIRE SPRINKLER PLAN
 SCALE= 1/8" : 1'-0"

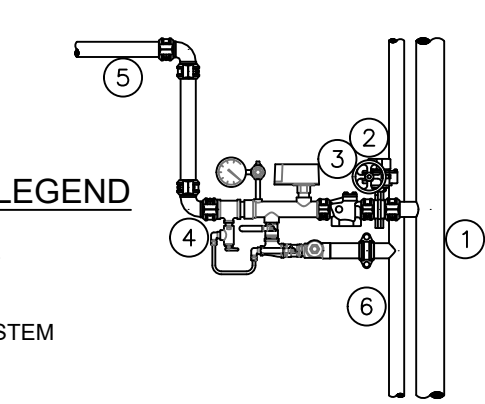


2nd FLOOR AREA B FIRE SPRINKLER PLAN
 SCALE= 1/8" : 1'-0"

ZONE CONTROL LEGEND

1. FEED MAIN
2. BUTTERFLY VALVE
2. CHECK VALVE
2. RISER MANIFOLD
2. TO SPRINKLER SYSTEM
- 1/2" DRAIN RISER

ZONE CONTROL DETAIL
 SCALE= 1/2" : 1'-0"



NOTE:
 RESIDENTIAL PENDENT SPRINKLERS IN
 UNITS SPACED AT A MAX OF 10'-0" IN
 UNITS @ 9'-0"
 RESIDENTIAL SIDEWALL SPRINKLERS IN
 HALLWAYS ARE SPACED AT A MAX OF
 10'-0" & SET 4'-0" MAX FROM DECK.
 CEILING NOTE: 2ND FLOOR
 DECK HEIGHT @ 10'-8"
 UNITS @ 9'-0"
 UNIT DROP CEILING @ 8'-0"
 CORRIDORS @ 9'-0"
 CORRIDOR SOFFITS @ 8'-0"

PIPE LEGEND

- BLACK STEEL FIRE SPRINKLER PIPING
- CPVC FIRE SPRINKLER PIPING
- FIRE SPRINKLER STANDPIPE PIPING
- FIRE DEPARTMENT CONNECTION PIPING

SYM	QTY	POSITION	FINISH	TEMP	SIZE	NPT	SIN	MFG	MODEL#	RESCUT/CHGR
1040	1	FEED MAIN	WHITE	150'	4.00	1/2"	TY2236	TYCO	LFI	SEMI-RECESSED
1041	13	SIDEWALL	WHITE	150'	8.00	3/4"	TY4332	TYCO	TY-FRB EC	SEMI-RECESSED
238	2	PENDENT	WHITE	200'	5.60	1/2"	TY323	TYCO	TY-FRB	SEMI-RECESSED
446	4	SIDEWALL	WHITE	150'	4.00	1/2"	VK486	Viking	VK486	SEMI-RECESSED
92	1	SIDEWALL	WHITE	200'	5.60	1/2"	TY3331	TYCO	TY-FRB	SEMI-RECESSED
267	1	UPRIGHT	BRASS	200'	14.00	3/4"	TY6137	TYCO	EC-14	N/A
6	6	UPRIGHT/SPRNG	BRASS	200'	14.00	3/4"	TY6137	TYCO	EC-14	N/A
103	1	UPRIGHT	WHITE	200'	5.60	1/2"	TY313	TYCO	TY-FRB	N/A
86	1	UPRIGHT	BRASS	200'	5.60	1/2"	TY313	TYCO	TY-FRB	N/A
18	1	UPRIGHT/SPRNG	BRASS	200'	5.60	1/2"	TY313	TYCO	TY-FRB	N/A
1	1	SIDEWALL	BRASS	200'	11.20	3/4"	TY3332	TYCO	ELC0900	N/A
4	3	SIDEWALL	WHITE	200'	2.80	1/2"	VK333	Viking	VK333	N/A
2313		TOTAL SPRINKLERS								

SPRINKLER HEAD LEGEND

- GENERAL NOTES**
1. SYSTEM INSTALLED PER NFPA 13 2016 EDITION AND STATE FIRE MARSHAL'S APPROVED LIST.
 2. ALL WELDING SHALL BE PER NFPA 511 AND SHALL BE 1" MINIMUM PIPE SIZE SHALL BE 1" MINIMUM PIPE SIZE.
 3. SHORT RISE FITTINGS SHALL BE WELDED WITHOUT APPROVED SHOP ALL WELDING PER NFPA 511 SHALL BE PER NFPA 511 APPROVED SHOP.
 4. SPRINKLER HEADS SHALL BE FIELD INSTALLED PRIOR TO FABRICATION AND INSTALLED BY SPRINKLER CONTRACTOR.
 5. SPRINKLER HEADS SHALL BE FIELD INSTALLED WHERE REQUIRED.
 6. HIGH TEMPERATURE HEADS ARE TO BE FIELD INSTALLED WHERE REQUIRED.
 7. HANDS ON TO BE FIELD INSTALLED BY SPRINKLER CONTRACTOR.
 8. ELECTRICAL WORK, ALARM DETECTION AND SUPERVISORY BY OWNER.
 9. WET SYSTEM PIPING FROM FREEZING.

APPROVAL STAMPS

NO	REVISIONS	DATE

FIRE PROTECTION PLAN

MALCOLM STATION
 485 MALCOLM AVE. SE,
 MINNEAPOLIS, MN 55414

Contract No: **C22-9**

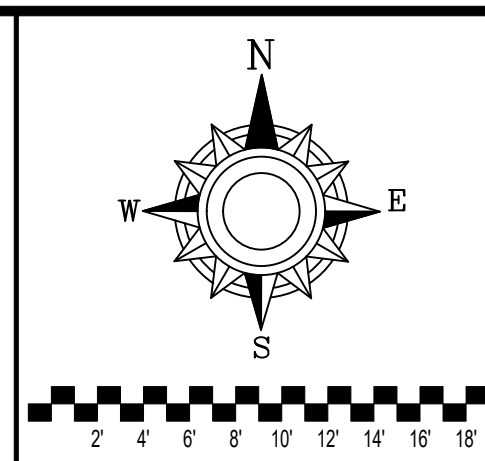
Drawing Date: 11/18/22

Scale: 1/8" = 1'-0"

Drawn By: BCJ

Approval By: STATE FIRE MARSHAL DIV.

SHEET NO. **FP 5 of 10**



GENERAL NOTES:
 1. SYSTEM INSTALLED PER NFPA 13 (2015 EDITION) AND STATE FIRE MARSHAL'S APPROVAL. THE SYSTEM SHALL BE A WET SYSTEM.
 2. ALL PIPING SHALL BE 1" MINIMUM PIPE SIZE UNLESS OTHERWISE NOTED.
 3. SHORT RISES IN WALLS TO FEED SIDEWALL SPRINKLERS SHALL BE WELDED OUTLETS & GROUNDED.
 4. ALL WELDING SHALL BE PER NFPA 54 & SHALL BE PERMITTED TO BE WELDED WITHOUT APPROVED SHOP DRAWINGS.
 5. SPRINKLER STANDPIPE SHALL BE INSTALLED PRIOR TO FABRICATION AND SHALL BE INSTALLED BY SPRINKLER CONTRACTOR.
 6. HIGH TEMPERATURE HEAD ARE TO BE RELOCATED WHERE REQUIRED.
 7. HANDS ARE TO BE USED TO REMOVE SPRINKLER HEADS FROM THE SYSTEM.
 8. ELECTRICAL WORK, JARUP DETECTION AND SUPERVISORY BY OWNER.
 9. WET SYSTEM PIPING FROM RECEIVING.

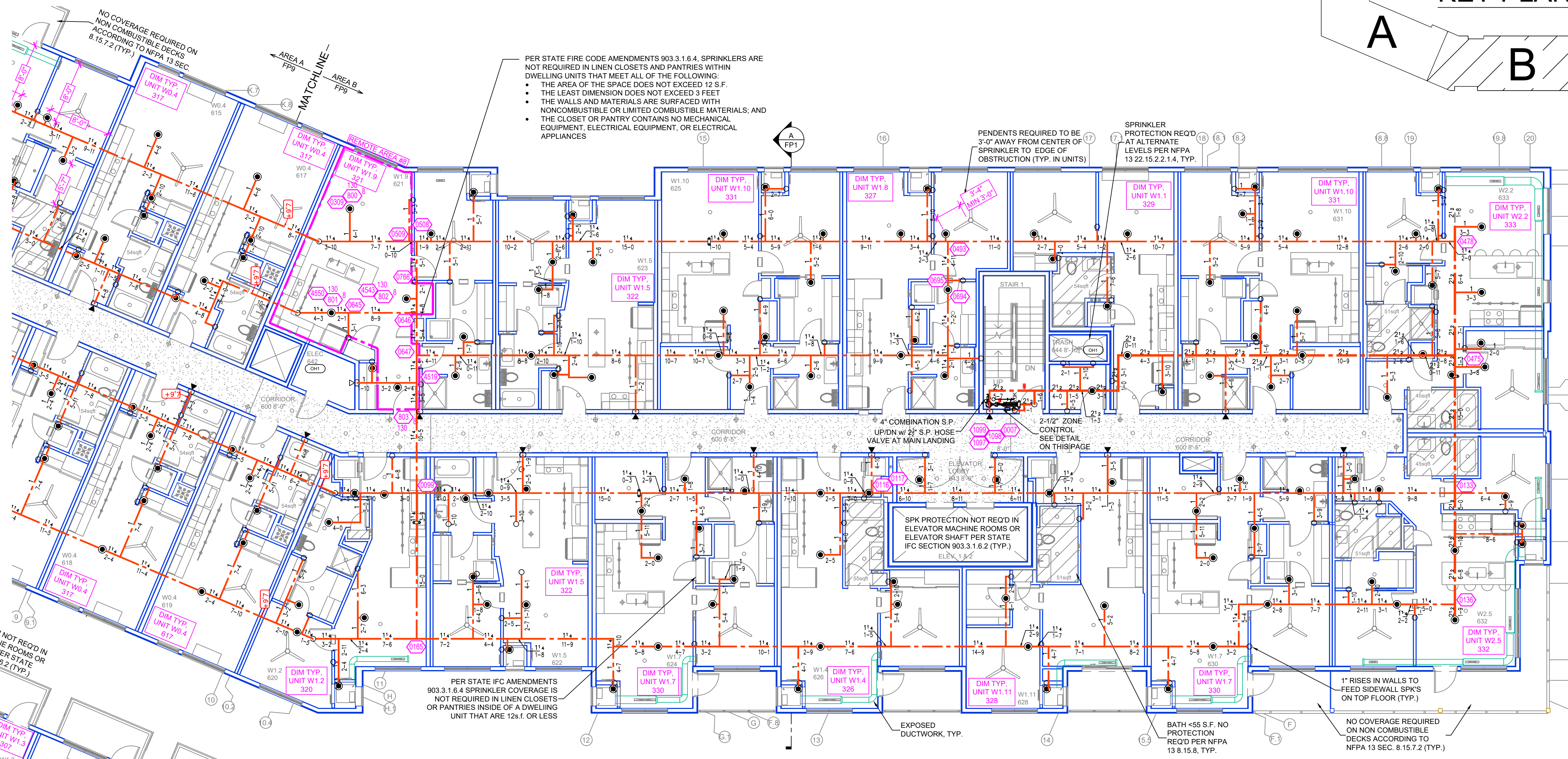
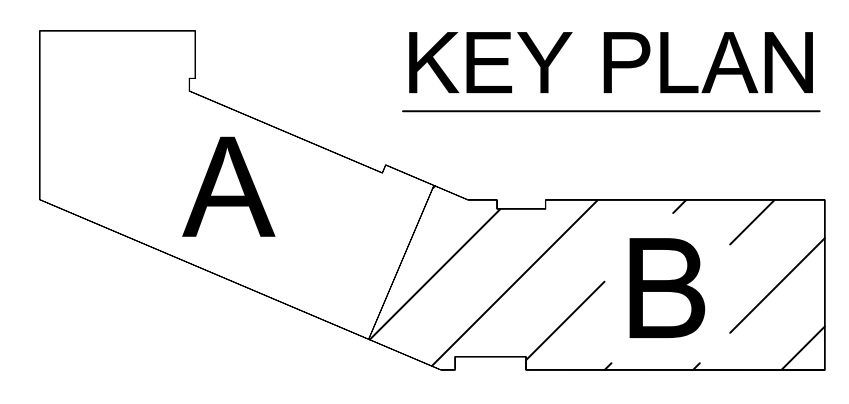
NO.	REVISIONS	DATE	APPROVAL STAMPS

Design Area # 8 HAZARD: RES
 Zone: 8 System Type: WET
 Location: 6th FLOOR
 W1.9 621
 Flowing Outlets: 4
 Density: 0.10 Remote Area: 345
 Flow: 152.4 gpm @ 49.2 psi
 Calculation Safety: 18.7 psi
 Includes 100 gpm Hose allowance

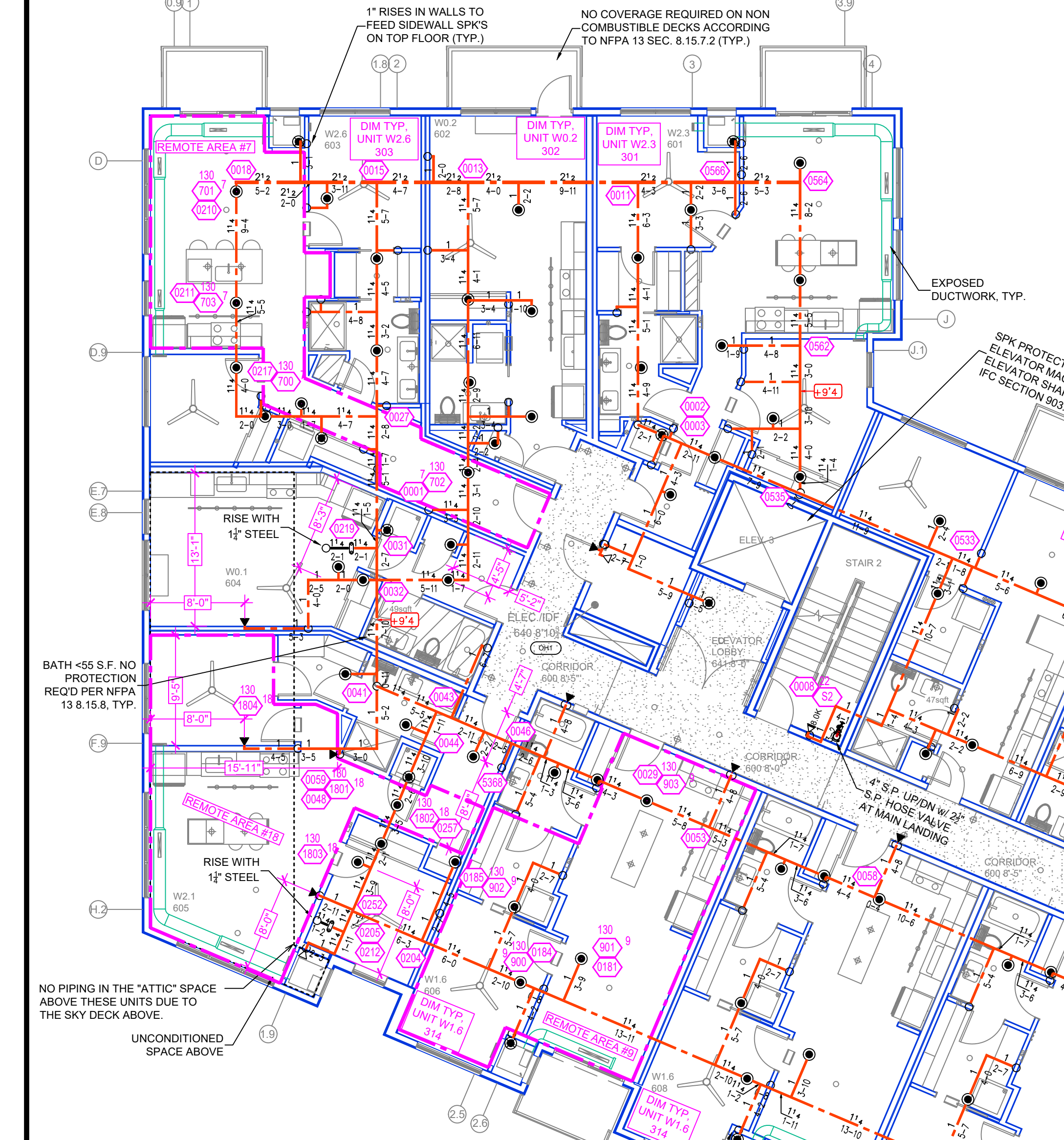
NOTE:
 FOUR MOST DEMANDING RESIDENTIAL SPRINKLERS CALCULATED PER NFPA 13 11.3.1.1.

Design Area # 7 HAZARD: RES
 Zone: 8 System Type: WET
 Location: 6th FLOOR
 W1.3 607
 Flowing Outlets: 4
 Density: 0.10 Remote Area: 345
 Flow: 152.7 gpm @ 51.9 psi
 Calculation Safety: 16 psi
 Includes 100 gpm Hose allowance

NOTE:
 FOUR MOST DEMANDING RESIDENTIAL SPRINKLERS CALCULATED PER NFPA 13 11.3.1.1.



6th FLOOR AREA B FIRE SPRINKLER PLAN
 SCALE = 1/8" : 1'-0"

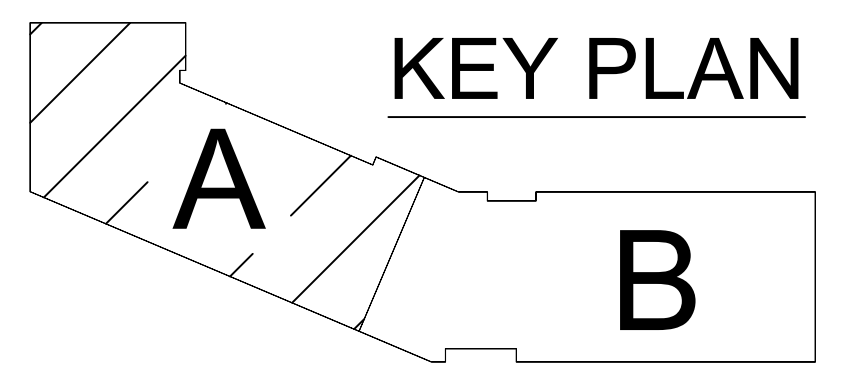


Design Area # 10 HAZARD: LIGHT
 Zone: 8 System Type: WET
 Location: 6th FLOOR
 W2.1 605
 Flowing Outlets: 4
 Density: 0.10 Remote Area: 474
 Flow: 157.4 gpm @ 58.2 psi
 Calculation Safety: 9.9 psi
 Includes 100 gpm Hose allowance

NOTE:
 FOUR MOST DEMANDING RESIDENTIAL SPRINKLERS CALCULATED PER NFPA 13 11.3.1.1.

Design Area # 9 HAZARD: RES
 Zone: 8 System Type: WET
 Location: 6th FLOOR
 W1.6 606
 Flowing Outlets: 4
 Density: 0.10 Remote Area: 492
 Flow: 153.3 gpm @ 52.2 psi
 Calculation Safety: 15.7 psi
 Includes 100 gpm Hose allowance

NOTE:
 FOUR MOST DEMANDING RESIDENTIAL SPRINKLERS CALCULATED PER NFPA 13 11.3.1.1.



6th FLOOR AREA A FIRE SPRINKLER PLAN
 SCALE = 1/8" : 1'-0"

PER STATE FIRE CODE AMENDMENTS 903.3.1.6.4, SPRINKLERS ARE NOT REQUIRED IN LINEN CLOSETS AND PANTRIES WITHIN DWELLING UNITS THAT MEET ALL OF THE FOLLOWING:
 • THE AREA OF THE SPACE DOES NOT EXCEED 12 S.F.
 • THE LEAST DIMENSION DOES NOT EXCEED 3 FEET
 • THE WALLS AND MATERIALS ARE SURFACED WITH NON-COMBUSTIBLE OR LIMITED COMBUSTIBLE MATERIALS; AND
 • THE CLOSET OR PANTRY CONTAINS NO MECHANICAL EQUIPMENT, ELECTRICAL EQUIPMENT, OR ELECTRICAL APPLIANCES

PENDENTS REQUIRED TO BE 3'-0" AWAY FROM CENTER OF SPRINKLER TO EDGE OF OBSTRUCTION (TYP. IN UNITS)

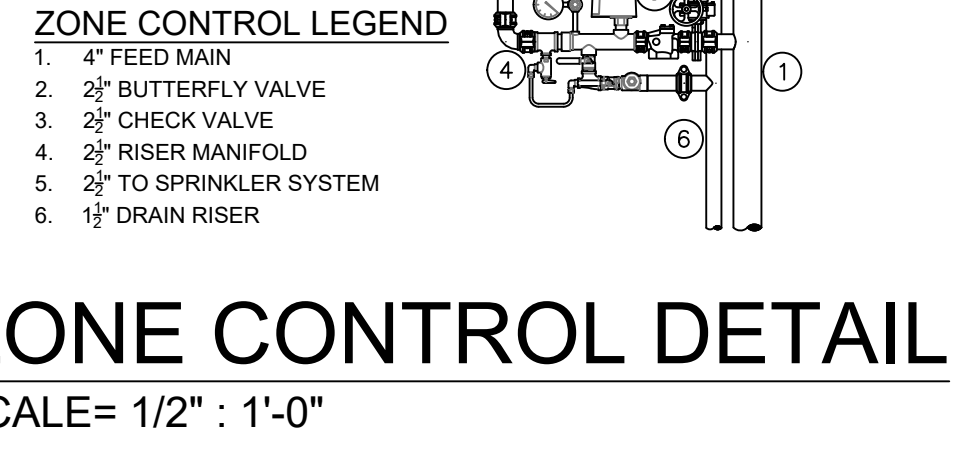
SPRINKLER PROTECTION REQD AT ALTERNATE LEVELS PER NFPA 13.22.15.2.2.1.4, TYP.

PER STATE IFC AMENDMENTS 903.3.1.6.4 SPRINKLER COVERAGE IS NOT REQUIRED IN LINEN CLOSETS OR PANTRIES INSIDE OF A DWELLING UNIT THAT ARE 12 S.F. OR LESS

EXPOSED DUCTWORK, TYP.

BATH - 455 S.F. NO PROTECTION REQD PER NFPA 13.8.15.8, TYP.

NO COVERAGE REQUIRED ON NON-COMBUSTIBLE DECKS ACCORDING TO NFPA 13 SEC. 8.15.7.2 (TYP.)



ZONE CONTROL LEGEND
 1. 4" FEED MAIN
 2. 2" BUTTERFLY VALVE
 3. 2" CHECK VALVE
 4. 2" RISER MANIFOLD
 5. 2" TO SPRINKLER SYSTEM
 6. 1/2" DRAIN RISER

ZONE CONTROL DETAIL
 SCALE = 1/2" : 1'-0"

PIPE LEGEND

—	BLACK STEEL FIRE SPRINKLER PIPING
—	CPVC FIRE SPRINKLER PIPING
—	FIRE SPRINKLER STANDPIPE PIPING
—	FIRE DEPARTMENT CONNECTION PIPING

NOTE:
 * RESIDENTIAL PENDENT SPRINKLERS IN UNITS SPACED AT A MAX OF 16'x16' U.N.O.
 * RESIDENTIAL SIDEWALL SPRINKLERS IN HALLWAYS ARE SPACED AT A MAX OF 16'x16', & SET 4'-0" MAX FROM DECK.
 CEILING NOTE: 6th FLOOR
 UNITS @ 9'-0" CORRIDORS @ 8'-0" CORRIDOR SOFFITS @ 9'-0"

SYM	QTY	POSITION	FINISH	TEMP	K	NPT	SN	MFG	MODEL	RECURSION
1040	1	PENDENT	WHITE	155°	4.80	1/2"	TY226	TYCO	LF1	SEMI-RECESSED
13	1	SIDEWALL	WHITE	155°	6.00	3/4"	TY432	TYCO	TY-FRB EC	SEMI-RECESSED
238	1	PENDENT	WHITE	200°	5.60	1/2"	TY322	TYCO	TY-FRB	SEMI-RECESSED
446	1	SIDEWALL	WHITE	155°	4.80	1/2"	W486	WKMG	W486	SEMI-RECESSED
92	1	SIDEWALL	WHITE	200°	5.60	1/2"	TY331	TYCO	TY-FRB	SEMI-RECESSED
267	1	UPRIGHT	BRASS	286°	14.00	3/4"	TY6137	TYCO	EC-14	N/A
8	1	UPRIGHT/SPRIG	BRASS	286°	14.00	3/4"	TY6137	TYCO	EC-14	N/A
103	1	UPRIGHT	WHITE	200°	5.60	1/2"	TY313	TYCO	TY-FRB	N/A
86	1	UPRIGHT	BRASS	200°	5.60	1/2"	TY313	TYCO	TY-FRB	N/A
18	1	UPRIGHT/SPRIG	BRASS	286°	5.60	1/2"	TY313	TYCO	TY-FRB	N/A
1	1	SIDEWALL	BRASS	200°	11.20	3/4"	TY332	TYCO	ELORW20	N/A
3	1	SIDEWALL	WHITE	200°	2.80	1/2"	WK333	WKMG	WK333	N/A
213	1	TOTAL								

SPRINKLER HEAD LEGEND

FIRE PROTECTION PLAN
MALCOLM STATION
 485 MALCOLM AVE. SE,
 MINNEAPOLIS, MN 55414

Contract No:
C22-9
 Drawing Date: 11/18/22
 Scale: 1/8" = 1'-0"
 Drawn By: BCJ
 Approval By: STATE FIRE MARSHAL DIV.
 SHEET NO. **FP 9 of 10**

