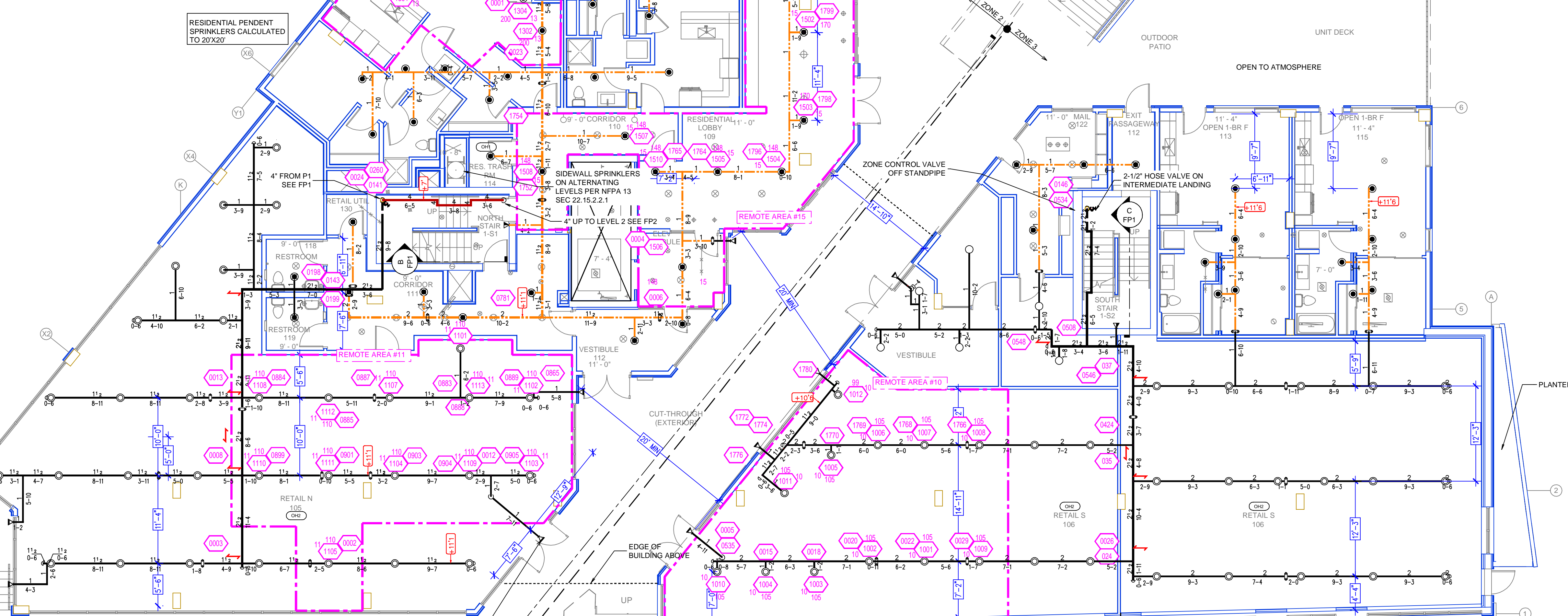


Design Area # 13 HAZARD: RES
 Zone: 2 System Type: WET
 Location: LEVEL 1
 Flowing Outlets: 4
 Density: 0.10 Remote Area: 439
 Flow: 84.5 gpm @ 46.1 psi
 Calculation Safety: 34.6 psi
 Includes 0 gpm Hose allowance
 NOTE: 4 SPRINKLER CALCULATED PER NFPA 13 SEC. 11.3.1.1
 NOTE: NO HOSE ALLOWANCE INCLUDED IN CALCULATIONS PER SEATTLE ADMINISTRATIVE RULE 9.03.20

Design Area # 16 HAZARD: LH
 Zone: 2 System Type: WET
 Location: LEVEL 1
 Flowing Outlets: 9
 Density: 0.10 Remote Area: 975
 Flow: 189.3 gpm @ 65.4 psi
 Calculation Safety: 14.1 psi
 Includes 0 gpm Hose allowance
 NOTE: 1500cf REDUCED BY 38% TO 900cf DUE TO CEILING HEIGHT PER NFPA 13 FIG. 19.3.2.3.1
 NOTE: NO HOSE ALLOWANCE INCLUDED IN CALCULATIONS PER SEATTLE ADMINISTRATIVE RULE 9.03.20



TIDYPIPE LEGEND

- WET SYSTEM BLACK STEEL PIPING
- STANDPIPE SYSTEM PIPING
- CPVC GLAZEMASTER PIPING
- DRY SYSTEM BLACK STEEL PIPING

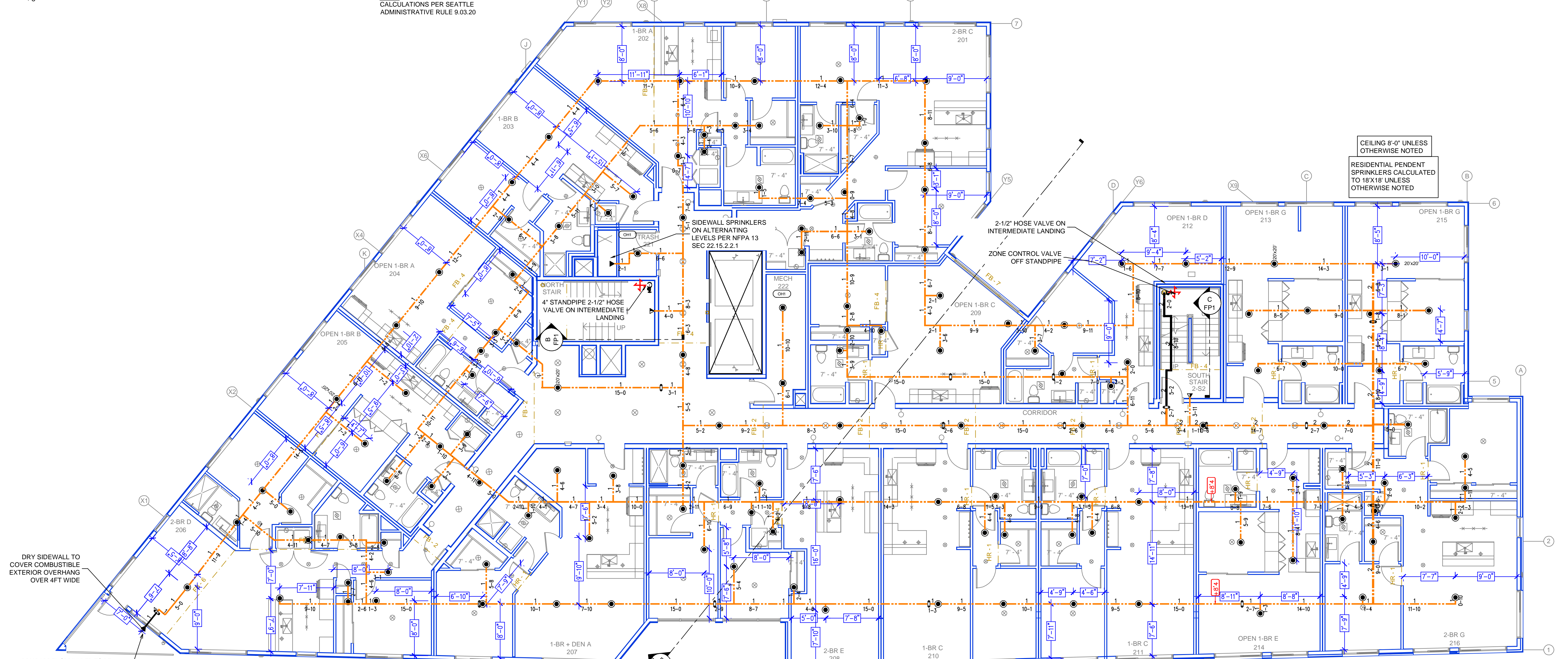
SYM	QTY	POSITION	FINISH	TEMP	K	NPT	BR	MPG	MODEL#	ESCUTCHEON	MAX SPACING
4		SIDEWALL	CHROME	200	5.60	1"	V3810	VICTAULIC	V38	SEM-RECESSED	14"x14"
615		PENDENT	WHITE	155	4.90	1/2"	V4906	VICTAULIC	FL-RES	CONCEALED	16"x16"
32		PENDENT	WHITE	200	5.60	1/2"	V5606	VICTAULIC	FL-GR-C	CONCEALED	15"
40		PENDENT	WHITE	155	5.60	1/2"	V5606	VICTAULIC	FL-GR-C	CONCEALED	15"
16		SIDEWALL	WHITE	155	8.00	3/4"	V3416	VICTAULIC	FL-BCLR	SEM-RECESSED	16"x20"
3		SIDEWALL	BRASS	200	5.60	1/2"	V2710	VICTAULIC	V27	SEM-RECESSED	14"
20		UPRIGHT	BRASS	200	5.60	1/2"	V2704	VICTAULIC	V27	N/A	15"
7		SIDEWALL	CHROME	200	5.60	1"	TY3338	TYCOO	DS-1 EC	SEM-RECESSED	16"x20"
64		UPRIGHT	BRASS	200	5.60	1/2"	V2704	VICTAULIC	V27	N/A	15 OR 130 S.F.
115		UPRIGHT	BRASS	200	5.60	3/4"	V2703	VICTAULIC	V27	N/A	15 OR 130 S.F.
916		TOTAL									

SPRINKLER HEAD LEGEND

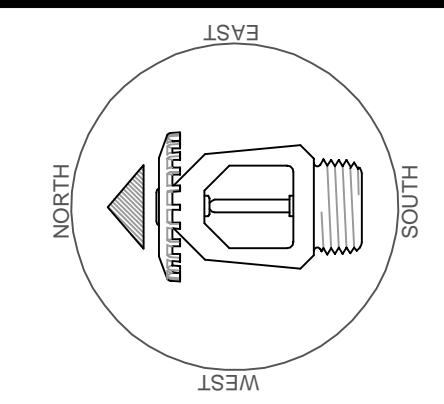
Design Area # 11 HAZARD: OH2
 Zone: 2 System Type: WET
 Location: LEVEL 1
 Flowing Outlets: 18
 Density: 0.20 Remote Area: 1062
 Flow: 298 gpm @ 68.2 psi
 Calculation Safety: 9.2 psi
 Includes 0 gpm Hose allowance
 NOTE: 1500cf REDUCED BY 31% TO 1035cf DUE TO CEILING HEIGHT PER NFPA 13 FIG. 11.2.2.3.1
 NOTE: NO HOSE ALLOWANCE INCLUDED IN CALCULATIONS PER SEATTLE ADMINISTRATIVE RULE 9.03.20

Design Area # 10 HAZARD: OH2
 Zone: 2 System Type: WET
 Location: LEVEL 1
 Flowing Outlets: 12
 Density: 0.20 Remote Area: 1123
 Flow: 263 gpm @ 62.7 psi
 Calculation Safety: 15.4 psi
 Includes 0 gpm Hose allowance
 NOTE: 1500cf REDUCED BY 31% TO 1035cf DUE TO CEILING HEIGHT PER NFPA 13 FIG. 11.2.2.3.1
 NOTE: NO HOSE ALLOWANCE INCLUDED IN CALCULATIONS PER SEATTLE ADMINISTRATIVE RULE 9.03.20

LEVEL 1 FIRE SPRINKLER PLAN
 SCALE: 1/8" = 1'-0"



LEVEL 2 FIRE SPRINKLER PLAN
 SCALE: 1/8" = 1'-0"



REVISIONS

NO.	DATE	DESCRIPTION

Drawing Title: **FIRE PROTECTION PLAN**
 Project No. 30346007
 Drawn By: AM
 Scale: 1/8" = 1'-0"
 Date: 3/29/23
 DWG Type: SUBMITTAL DWG
 Parcel No. 148940-0105, 148940-0100, 148940-0090, 148940-0080

JOSEPHINE SOUTH APT A
 5262 RAINIER AVE S | SEATTLE, WA 98118