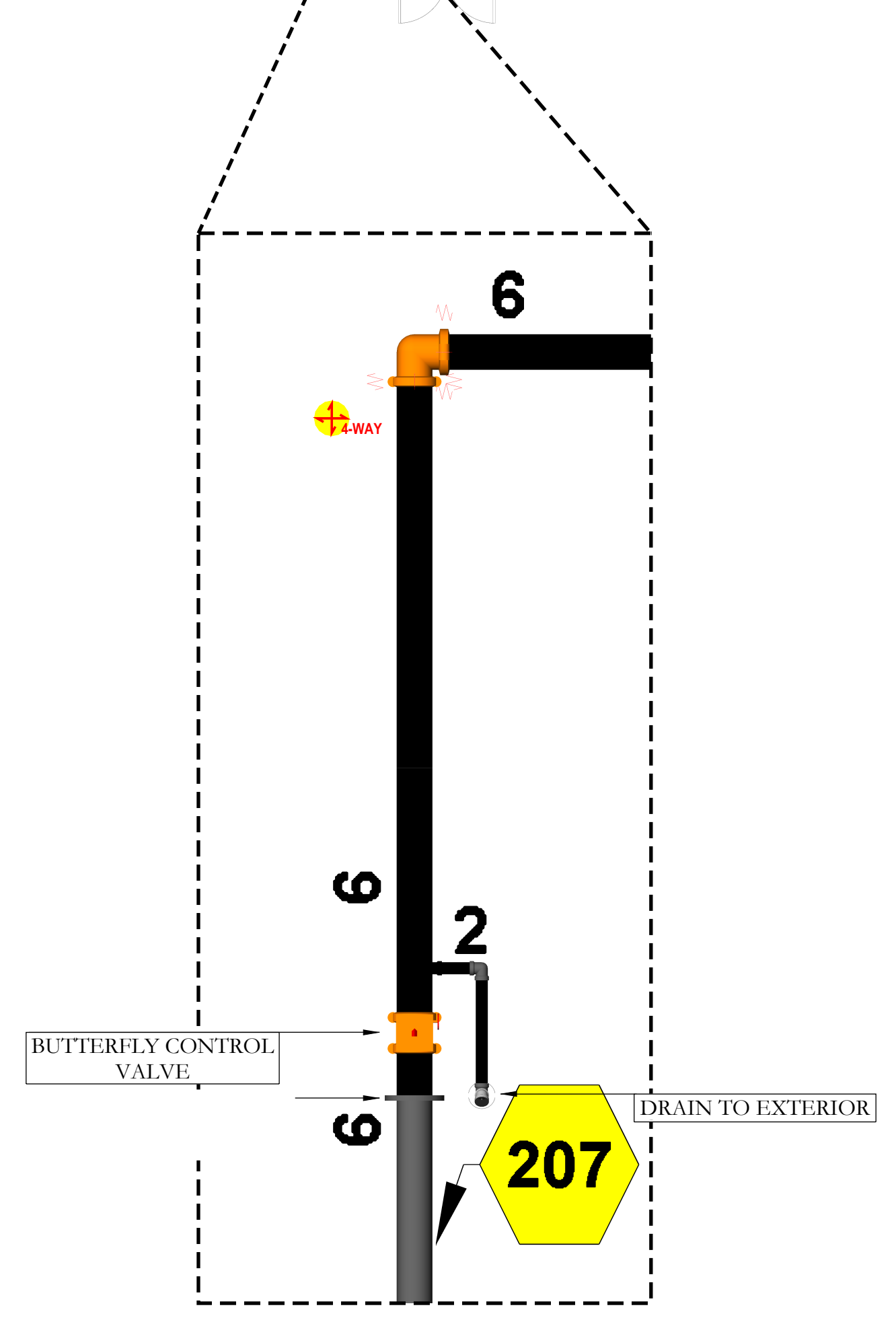


4" STANDPIPE UP TO 2ND FLOOR



KEY NOTES

- 1 TYPICAL SYSTEM RISER
SEE DETAIL ON SHEET FP-D2
- 2 TYPICAL COMBINATION STANDPIPE
SEE DETAIL ON SHEET FP-D2
- 3 TYPICAL STANDPIPE
SEE DETAIL ON SHEET FP-D2
- 4 4" TYPICAL STANDPIPE & HOSE VALVE CABINET
SEE DETAIL ON SHEET FP-D2
- 5 4" DOWN TO FLOOR BELOW
8" CAN FOR ANNULAR CLEARANCE PER NFPA 13
- 6 4" UP TO FLOOR ABOVE
8" CAN FOR ANNULAR CLEARANCE PER NFPA 13
- 7 2" DRAIN UP TO FLOOR ABOVE
4" CAN FOR ANNULAR CLEARANCE PER NFPA 13
- 8 2" DRAIN DOWN TO FLOOR BELOW
4" CAN FOR ANNULAR CLEARANCE PER NFPA 13
- 9 2" DRAIN TO SANITARY CONNECTION
- 10 1" AUXILIARY DRAIN
NIPPLE, VALVE & PLUG
- 11 1" AUXILIARY DRAIN
PIPE TO SANITARY DRAIN
- 12 9'-0" MAX. IN SMALL ROOMS
SEE DESIGN NOTE #1 ON SHEET FP-0.1
- 13 SPRINKLER OMITTED FROM BATHROOM
SEE DESIGN NOTE #2 ON SHEET FP-0.1
- 14 SPRINKLERS OMITTED FROM OVERHANG
SEE DESIGN NOTE #3 ON SHEET FP-0.1
- 15 SPRINKLERS OMITTED FROM VERTICAL SHAFT
SEE DESIGN NOTE #4 ON SHEET FP-0.1
- 16 LAUNDRY OR GARBAGE CHUTE SPRINKLER
PRE-INSTALLED & CONNECTED BY AEGIS
- 17 CPVC TO STEEL PIPE ADAPTER
THREADED OR GROOVED AS APPLICABLE

PIPING NOTES

- 1 BRANCHLINE PIPING TO BE INSTALLED 6" FROM BOTTOM OF SLAB TO CENTER OF PIPE, TYPICAL.
- 2 BULK MAINS TO BE INSTALLED 1'-0" FROM BOTTOM OF DECK TO CENTER OF PIPE, TYPICAL.
- 3 SYSTEM MAINS TO BE INSTALLED 1'-8" FROM BOTTOM OF DECK TO CENTER OF PIPE, TYPICAL.
- 4 ALL EXPOSED PIPING SHALL BE STEEL PIPE PER GENERAL NOTE # 17 ON SHEET FP-0.1.

CONCEALED SPACES

- 1 ALL CONCEALED COMBUSTIBLE SPACES SHALL BE ENTIRELY FILLED WITH NONCOMBUSTIBLE INSULATION.
- 2 SPRINKLERS SHALL BE OMITTED FROM CONCEALED COMBUSTIBLE SPACES ENTIRELY FILLED WITH NONCOMBUSTIBLE INSULATION PER NFPA 13, 8.15.1.2.7

SOFFIT NOTES

- 1 ALL SOFFITS 24" OR LESS IN WIDTH TO BE PROTECTED IN ACCORDANCE WITH NFPA 13, SECTION 8.10.6.1.2 (4).
- 2 ALL SOFFITS MORE THAN 24" IN WIDTH TO BE PROTECTED IN ACCORDANCE WITH NFPA 13, SECTION 8.10.6.1.2 (3).

PIPE LEGEND

- WET BLACK STEEL
- WET CPVC PIPE

STAMP

PROJECT

414 PETALUMA BLVD. APTS.
414 PETALUMA BLVD. N.
PETALUMA, CA 94954

CUSTOMER

INSPECTIONS

PHONE:
WELD INSPECTION:

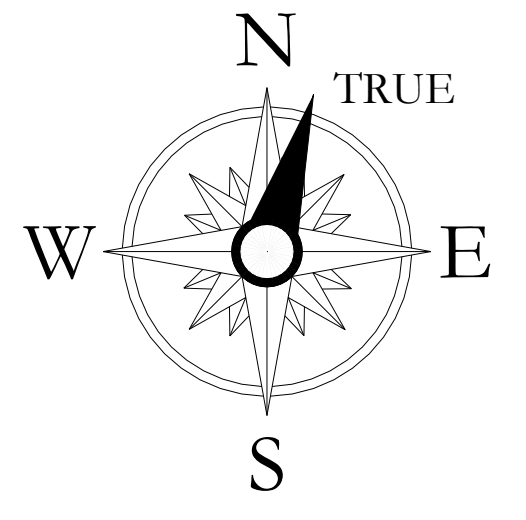
REVISIONS

NO.	DATE	DESCRIPTION

CITY SUPPLY

STATIC PRESSURE: 64 PSI
RESIDUAL PRESSURE: 62 PSI
FLOW @ RESIDUAL: 1186 GPM
TEST LOCATION: 244 PETALUMA BLVD.
TEST DATE: 1/9/2020
HYDRANT #: N/A

ORIENTATION



SCALE

1/8" = 1'-0"
0' 2' 4' 8' 16' 24'

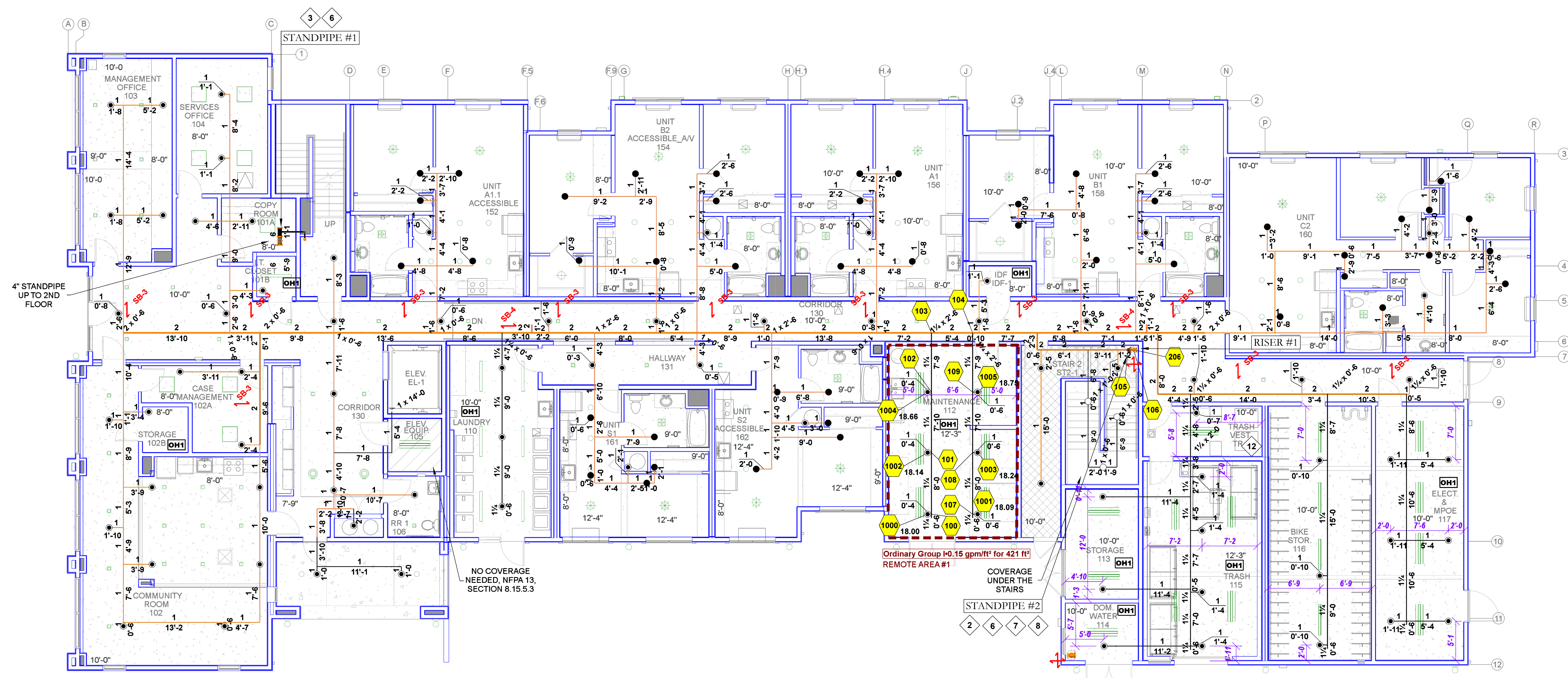
DESCRIPTION

FLOOR 1 BULK PIPING PLAN

SHEET NUMBER

FP-1.1

JOB NUMBER: 5723111



HYDRAULIC INFORMATION #1	
Remote Area 1	
OCCUPANCY CLASSIFICATION	Ordinary Group I
DENSITY (gpm/ft ²)	0.15 for 1500 ft ² (Actual 421 ft ²)
TOTAL HOSE STREAMS	250.00
TOTAL HEADS FLOWING	6
K-FACTOR	5.6
TOTAL WATER REQUIRED	359.88
TOTAL PRESSURE REQUIRED	32.52
BASE OF RISER (gpm)	359.88
BASE OF RISER (psi)	32.52
SAFETY MARGIN (psi)	+31.38 (49.1%)

- ### KEY NOTES
- 1 TYPICAL SYSTEM RISER SEE DETAIL ON SHEET FP-D2
 - 2 TYPICAL COMBINATION STANDPIPE SEE DETAIL ON SHEET FP-D2
 - 3 TYPICAL STANDPIPE SEE DETAIL ON SHEET FP-D2
 - 4 4" TYPICAL STANDPIPE & HOSE VALVE CABINET SEE DETAIL ON SHEET FP-D2
 - 5 4" DOWN TO FLOOR BELOW 8" CAN FOR ANNULAR CLEARANCE PER NFPA 13
 - 6 4" UP TO FLOOR ABOVE 8" CAN FOR ANNULAR CLEARANCE PER NFPA 13
 - 7 2" DRAIN UP TO FLOOR ABOVE 4" CAN FOR ANNULAR CLEARANCE PER NFPA 13
 - 8 2" DRAIN DOWN TO FLOOR BELOW 4" CAN FOR ANNULAR CLEARANCE PER NFPA 13
 - 9 2" DRAIN TO SANITARY CONNECTION
 - 10 1" AUXILIARY DRAIN NIPPLE, VALVE & PLUG
 - 11 1" AUXILIARY DRAIN PIPE TO SANITARY DRAIN
 - 12 9/0 MAX. IN SMALL ROOMS SEE DESIGN NOTE #1 ON SHEET FP-0.1
 - 13 SPRINKLER OMITTED FROM BATHROOM SEE DESIGN NOTE #2 ON SHEET FP-0.1
 - 14 SPRINKLERS OMITTED FROM OVERHANG SEE DESIGN NOTE #3 ON SHEET FP-0.1
 - 15 SPRINKLERS OMITTED FROM VERTICAL SHAFT SEE DESIGN NOTE #4 ON SHEET FP-0.1
 - 16 LAUNDRY OR GARBAGE CHUTE SPRINKLER PRE-INSTALLED & CONNECTED BY AEGIS
 - 17 CPVC TO STEEL PIPE ADAPTER THREADED OR GROOVED AS APPLICABLE

- ### PIPING NOTES
- 1 BRANCHLINE PIPING TO BE INSTALLED 6" FROM BOTTOM OF SLAB TO CENTER OF PIPE, TYPICAL.
 - 2 BULK MAINS TO BE INSTALLED 1-0" FROM BOTTOM OF DECK TO CENTER OF PIPE, TYPICAL.
 - 3 SYSTEM MAINS TO BE INSTALLED 1-8" FROM BOTTOM OF DECK TO CENTER OF PIPE, TYPICAL.
 - 4 ALL EXPOSED PIPING SHALL BE STEEL PIPE PER GENERAL NOTE # 17 ON SHEET FP-0.1.

- ### CONCEALED SPACES
- 1 ALL CONCEALED COMBUSTIBLE SPACES SHALL BE ENTIRELY FILLED WITH NONCOMBUSTIBLE INSULATION.
 - 2 SPRINKLERS SHALL BE OMITTED FROM CONCEALED COMBUSTIBLE SPACES ENTIRELY FILLED WITH NONCOMBUSTIBLE INSULATION PER NFPA 13, 8.15.1.2.7

- ### SOFFIT NOTES
- 1 ALL SOFFITS 24" OR LESS IN WIDTH TO BE PROTECTED IN ACCORDANCE WITH NFPA 13, SECTION 8.10.6.1.2 (4).
 - 2 ALL SOFFITS MORE THAN 24" IN WIDTH TO BE PROTECTED IN ACCORDANCE WITH NFPA 13, SECTION 8.10.6.1.2 (3).

PIPE LEGEND

	WET BLACK STEEL
	WET CPVC PIPE

SPRINKLER LEGEND

Symbol	Manufacturer	SIN	Model	Quantity	K-Factor	Type	Size	Response	Finish	Temperature	Note
	Tyco	TY3551	RFII	82	5.6	Pendent	1/2	Quick	White	200 °F	
	Tyco	TY3331	TY-FRB	1	5.6	Sidewall	1/2	Quick	Brass	200 °F	
	Tyco	TY3131	TY-FRB	3	5.6	Upright	1/2	Quick	Brass	200 °F	
	Tyco	TY2236	LFII	46	4.9	Pendent	1/2	Fast	White	175 °F	MAX SPACING 18'X18'
				Total = 132							

STAMP

PROJECT
414 PETALUMA BLVD. APTS.
414 PETALUMA BLVD. N.
PETALUMA, CA 94954

CUSTOMER

REVISIONS

NO.	DATE	DESCRIPTION

CITY SUPPLY

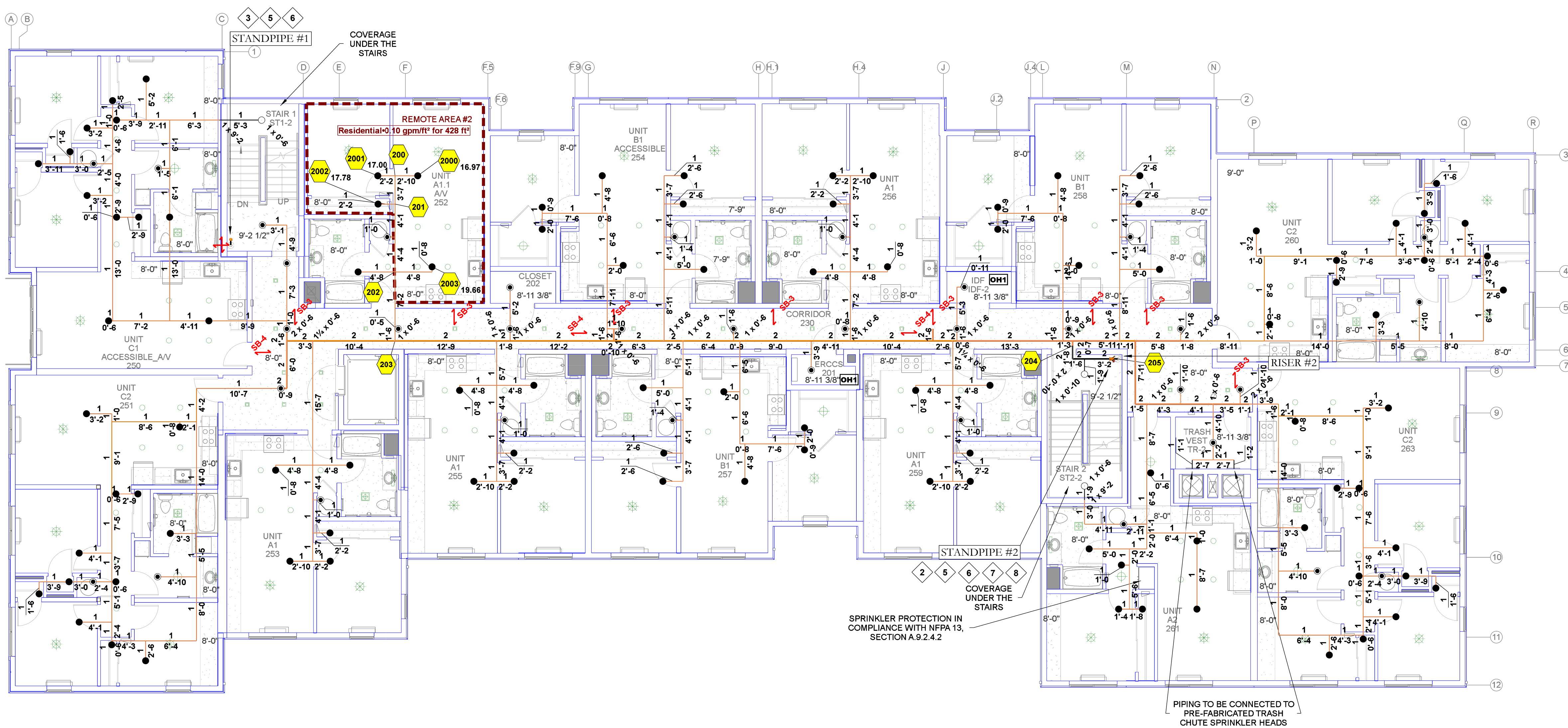
STATIC PRESSURE: 64 PSI
RESIDUAL PRESSURE: 62 PSI
FLOW @ RESIDUAL: 1186 GPM
TEST LOCATION: 244 PETALUMA BLVD.
TEST DATE: 1/9/2020
TESTING AGENCY:
HYDRANT #: N/A

ORIENTATION

SCALE
1/8" = 1'-0"
0' 2' 4' 8' 16' 24'

DESCRIPTION
FLOOR 1 SYSTEM PIPING PLAN

SHEET NUMBER
FP-1.2



HYDRAULIC INFORMATION # 2	
Remote Area 2	
OCCUPANCY CLASSIFICATION	Residential
DENSITY (gpm/ft²)	0.10 for 900 ft² (Actual 428 ft²)
TOTAL HOSE STREAMS	100.00
TOTAL HEADS FLOWING	4
K-FACTOR	4.8
TOTAL WATER REQUIRED	171.41
TOTAL PRESSURE REQUIRED	62.80
BASE OF RISER (gpm)	171.41
BASE OF RISER (psi)	62.80
SAFETY MARGIN (psi)	+11.17 (17.5%)

- ### KEY NOTES
- 1 TYPICAL SYSTEM RISER SEE DETAIL ON SHEET FP-D2
 - 2 TYPICAL COMBINATION STANDPIPE SEE DETAIL ON SHEET FP-D2
 - 3 TYPICAL STANDPIPE SEE DETAIL ON SHEET FP-D2
 - 4 4" TYPICAL STANDPIPE & HOSE VALVE CABINET SEE DETAIL ON SHEET FP-D2
 - 5 4" DOWN TO FLOOR BELOW 8" CAN FOR ANNULAR CLEARANCE PER NFPA 13
 - 6 4" UP TO FLOOR ABOVE 8" CAN FOR ANNULAR CLEARANCE PER NFPA 13
 - 7 2" DRAIN UP TO FLOOR ABOVE 4" CAN FOR ANNULAR CLEARANCE PER NFPA 13
 - 8 2" DRAIN DOWN TO FLOOR BELOW 4" CAN FOR ANNULAR CLEARANCE PER NFPA 13
 - 9 2" DRAIN TO SANITARY CONNECTION
 - 10 1" AUXILIARY DRAIN NIPPLE, VALVE & PLUG
 - 11 1" AUXILIARY DRAIN PIPE TO SANITARY DRAIN
 - 12 9'-0" MAX. IN SMALL ROOMS SEE DESIGN NOTE #1 ON SHEET FP-0.1
 - 13 SPRINKLER OMITTED FROM BATHROOM SEE DESIGN NOTE #2 ON SHEET FP-0.1
 - 14 SPRINKLERS OMITTED FROM OVERHANG SEE DESIGN NOTE #3 ON SHEET FP-0.1
 - 15 SPRINKLERS OMITTED FROM VERTICAL SHAFT SEE DESIGN NOTE #4 ON SHEET FP-0.1
 - 16 LAUNDRY OR GARBAGE CHUTE SPRINKLER PRE-INSTALLED & CONNECTED BY AEGIS
 - 17 CPVC TO STEEL PIPE ADAPTER THREADED OR GROOVED AS APPLICABLE

- ### PIPING NOTES
- 1 BRANCHLINE PIPING TO BE INSTALLED 6" FROM BOTTOM OF SLAB TO CENTER OF PIPE, TYPICAL.
 - 2 BULK MAINS TO BE INSTALLED 1'-0" FROM BOTTOM OF DECK TO CENTER OF PIPE, TYPICAL.
 - 3 SYSTEM MAINS TO BE INSTALLED 1'-8" FROM BOTTOM OF DECK TO CENTER OF PIPE, TYPICAL.
 - 4 ALL EXPOSED PIPING SHALL BE STEEL PIPE PER GENERAL NOTE # 17 ON SHEET FP-0.1.

- ### CONCEALED SPACES
- 1 ALL CONCEALED COMBUSTIBLE SPACES SHALL BE ENTIRELY FILLED WITH NONCOMBUSTIBLE INSULATION.
 - 2 SPRINKLERS SHALL BE OMITTED FROM CONCEALED COMBUSTIBLE SPACES ENTIRELY FILLED WITH NONCOMBUSTIBLE INSULATION PER NFPA 13, 8.15.1.2.7

- ### SOFFIT NOTES
- 1 ALL SOFFITS 24" OR LESS IN WIDTH TO BE PROTECTED IN ACCORDANCE WITH NFPA 13, SECTION 8.10.6.1.2 (4).
 - 2 ALL SOFFITS MORE THAN 24" IN WIDTH TO BE PROTECTED IN ACCORDANCE WITH NFPA 13, SECTION 8.10.6.1.2 (3).

PIPE LEGEND

	WET BLACK STEEL
	WET CPVC PIPE

SPRINKLER LEGEND

Symbol	Manufacturer	SIN	Model	Quantity	K-Factor	Type	Size	Response	Finish	Temperature	Note
	Tyco	TY3551	RPII	35	5.6	Pendent	1/2"	Quick	White	200 °F	
	Tyco	TY3131	TY-FRB	3	5.6	Upright	1/2"	Quick	Brass	200 °F	
	Tyco	TY2236	LFII	101	4.9	Pendent	1/2"	Fast	White	175 °F	MAX SPACING 18"X18"
				Total =	139						

STAMP

PROJECT
414 PETALUMA BLVD. APTS.
414 PETALUMA BLVD. N.
PETALUMA, CA 94954

CUSTOMER

INSPECTIONS

PHONE: _____
WELD INSPECTION: _____

REVISIONS

NO.	DATE	DESCRIPTION

CITY SUPPLY

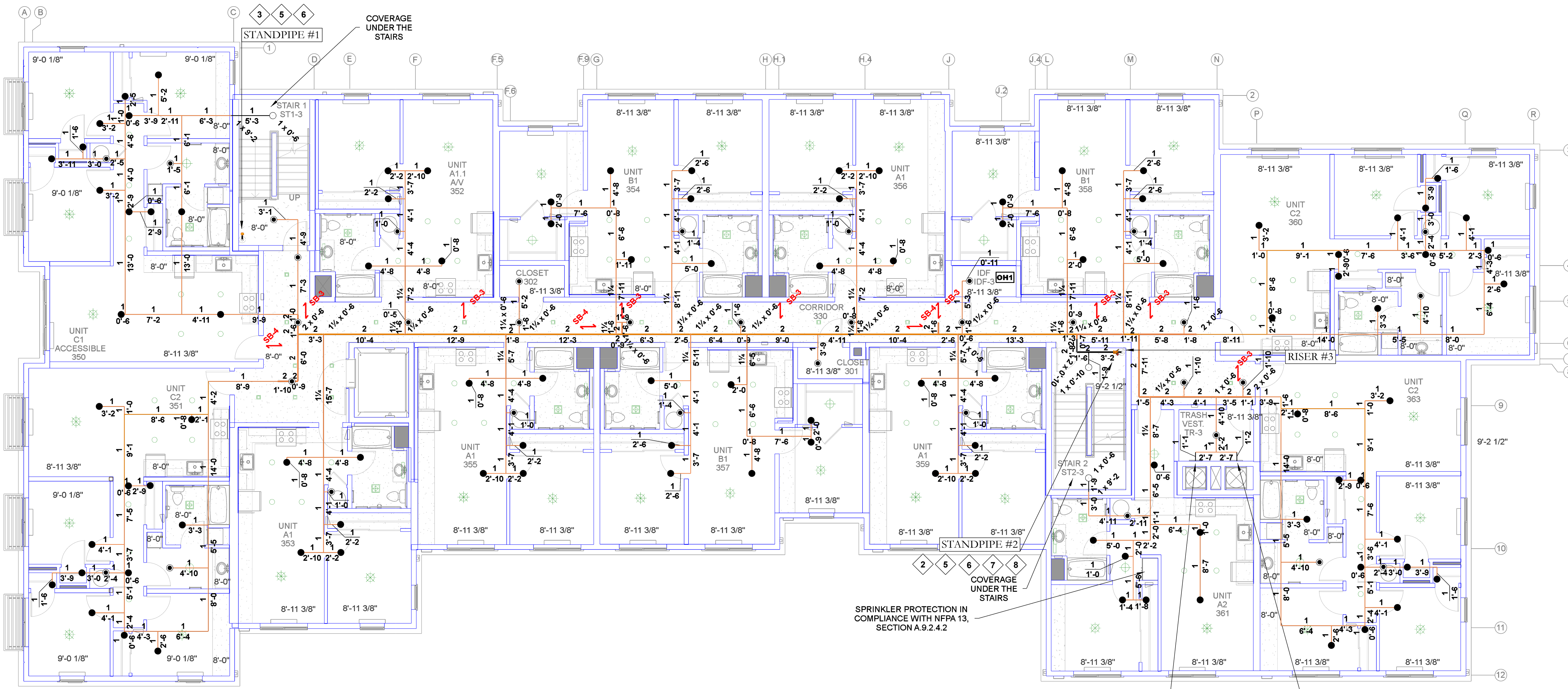
STATIC PRESSURE: 64 PSI
RESIDUAL PRESSURE: 62 PSI
FLOW @ RESIDUAL: 1186 GPM
TEST LOCATION: 244 PETALUMA BLVD.
TEST DATE: 1/9/2020
TESTING AGEN: _____
HYDRANT #: N/A

ORIENTATION

SCALE
1/8" = 1'-0"
0' 2' 4' 8' 16' 24'

DESCRIPTION
FLOOR 2 SYSTEM PIPING PLAN

SHEET NUMBER
FP-1.3



- ### KEY NOTES
- 1 TYPICAL SYSTEM RISER
SEE DETAIL ON SHEET FP-D2
 - 2 TYPICAL COMBINATION STANDPIPE
SEE DETAIL ON SHEET FP-D2
 - 3 TYPICAL STANDPIPE
SEE DETAIL ON SHEET FP-D2
 - 4 4" TYPICAL STANDPIPE & HOSE VALVE CABINET
SEE DETAIL ON SHEET FP-D2
 - 5 4" DOWN TO FLOOR BELOW
8" CAN FOR ANNULAR CLEARANCE PER NFPA 13
 - 6 4" UP TO FLOOR ABOVE
8" CAN FOR ANNULAR CLEARANCE PER NFPA 13
 - 7 2" DRAIN UP TO FLOOR ABOVE
4" CAN FOR ANNULAR CLEARANCE PER NFPA 13
 - 8 2" DRAIN DOWN TO FLOOR BELOW
4" CAN FOR ANNULAR CLEARANCE PER NFPA 13
 - 9 2" DRAIN TO SANITARY CONNECTION
 - 10 1" AUXILIARY DRAIN
NIPPLE, VALVE & PLUG
 - 11 1" AUXILIARY DRAIN
PIPE TO SANITARY DRAIN
 - 12 9'-0" MAX. IN SMALL ROOMS
SEE DESIGN NOTE #1 ON SHEET FP-0.1
 - 13 SPRINKLER OMITTED FROM BATHROOM
SEE DESIGN NOTE #2 ON SHEET FP-0.1
 - 14 SPRINKLERS OMITTED FROM OVERHANG
SEE DESIGN NOTE #3 ON SHEET FP-0.1
 - 15 SPRINKLERS OMITTED FROM VERTICAL SHAFT
SEE DESIGN NOTE #4 ON SHEET FP-0.1
 - 16 LAUNDRY OR GARBAGE CHUTE SPRINKLER
PRE-INSTALLED & CONNECTED BY AEGIS
 - 17 CPVC TO STEEL PIPE ADAPTER
THREADED OR GROOVED AS APPLICABLE

- ### PIPING NOTES
- 1 BRANCHLINE PIPING TO BE INSTALLED 6" FROM
BOTTOM OF SLAB TO CENTER OF PIPE, TYPICAL.
 - 2 BULK MAINS TO BE INSTALLED 1'-0" FROM
BOTTOM OF DECK TO CENTER OF PIPE, TYPICAL.
 - 3 SYSTEM MAINS TO BE INSTALLED 1'-8" FROM
BOTTOM OF DECK TO CENTER OF PIPE, TYPICAL.
 - 4 ALL EXPOSED PIPING SHALL BE STEEL PIPE PER
GENERAL NOTE # 17 ON SHEET FP-0.1.

- ### CONCEALED SPACES
- 1 ALL CONCEALED COMBUSTIBLE SPACES SHALL
BE ENTIRELY FILLED WITH NONCOMBUSTIBLE
INSULATION.
 - 2 SPRINKLERS SHALL BE OMITTED FROM
CONCEALED COMBUSTIBLE SPACES ENTIRELY
FILLED WITH NONCOMBUSTIBLE INSULATION
PER NFPA 13, 8.15.1.2.7

- ### SOFFIT NOTES
- 1 ALL SOFFITS 24" OR LESS IN WIDTH TO BE
PROTECTED IN ACCORDANCE WITH NFPA 13,
SECTION 8.10.6.1.2 (4).
 - 2 ALL SOFFITS MORE THAN 24" IN WIDTH TO BE
PROTECTED IN ACCORDANCE WITH NFPA 13,
SECTION 8.10.6.1.2 (3).



SPRINKLER LEGEND

Symbol	Manufacturer	SIN	Model	Quantity	K-Factor	Type	Size	Response	Finish	Temperature	Note
	Tyco	TY3551	RPH	35	5.6	Pendent	1/2"	Quick	White	200 °F	
	Tyco	TY3131	TY-FRB	3	5.6	Upright	1/2"	Quick	Brass	200 °F	
	Tyco	TY2236	LPH	101	4.9	Pendent	1/2"	Fast	White	175 °F	MAX SPACING 18"X18"
				Total = 139							

STAMP

PROJECT

414 PETALUMA BLVD. APTS.

414 PETALUMA BLVD. N.
PETALUMA, CA 94954

CUSTOMER

PHONE: _____

WELD INSPECTION: _____

REVISIONS

NO.	DATE	DESCRIPTION

CITY SUPPLY

STATIC PRESSURE: _____ 64 PSI

RESIDUAL PRESSURE: _____ 62 PSI

FLOW @ RESIDUAL: _____ 1186 GPM

TEST LOCATION: _____ 244 PETALUMA BLVD.

TEST DATE: _____ 1/9/2020

TESTING AGENCY: _____

HYDRANT #: _____ N/A

ORIENTATION

SCALE

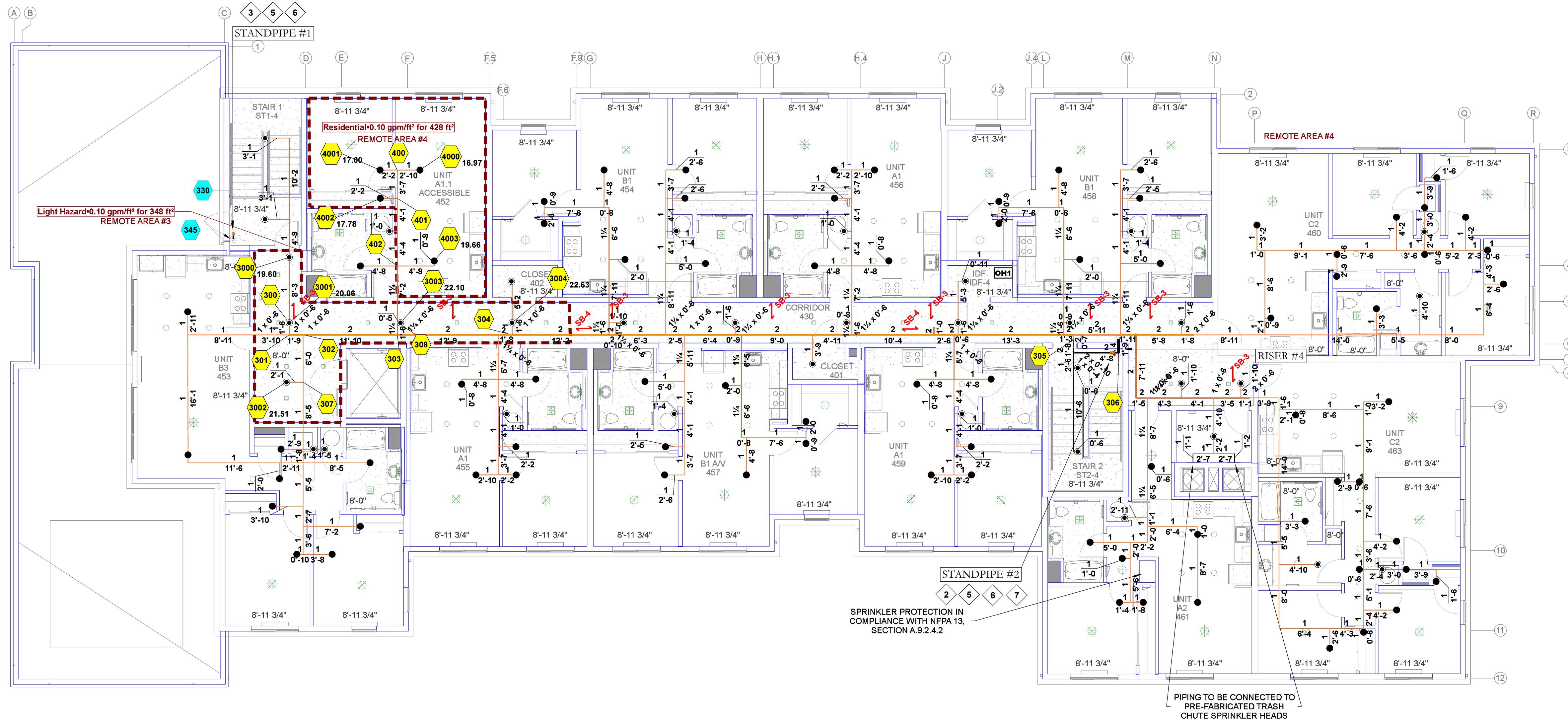
1/8" = 1'-0"

DESCRIPTION

FLOOR 3 SYSTEM PIPING PLAN

SHEET NUMBER

FP-1.4



HYDRAULIC INFORMATION #3	
Remote Area 3	
OCCUPANCY CLASSIFICATION	Light Hazard
DENSITY (gpm/ft ²)	0.10 for 1500 ft ² (Actual 348 ft ²)
TOTAL HOSE STREAMS	100.00
TOTAL HEADS FLOWING	5
K-FACTOR	5.6
TOTAL WATER REQUIRED	205.90
TOTAL PRESSURE REQUIRED	52.82
BASE OF RISER (gpm)	205.90
BASE OF RISER (psi)	52.82
SAFETY MARGIN (psi)	+11.13 (17.4%)

HYDRAULIC INFORMATION #4	
Remote Area 4	
OCCUPANCY CLASSIFICATION	Residential
DENSITY (gpm/ft ²)	0.10 for 900 ft ² (Actual 428 ft ²)
TOTAL HOSE STREAMS	100.00
TOTAL HEADS FLOWING	4
K-FACTOR	4.8
TOTAL WATER REQUIRED	171.41
TOTAL PRESSURE REQUIRED	51.37
BASE OF RISER (gpm)	171.41
BASE OF RISER (psi)	51.37
SAFETY MARGIN (psi)	+12.60 (19.7%)

- ### KEY NOTES
- TYPICAL SYSTEM RISER SEE DETAIL ON SHEET FP-D2
 - TYPICAL COMBINATION STANDPIPE SEE DETAIL ON SHEET FP-D2
 - TYPICAL STANDPIPE SEE DETAIL ON SHEET FP-D2
 - 4" TYPICAL STANDPIPE & HOSE VALVE CABINET SEE DETAIL ON SHEET FP-D2
 - 4" DOWN TO FLOOR BELOW
 - 8" CAN FOR ANNULAR CLEARANCE PER NFPA 13
 - 4" UP TO FLOOR ABOVE
 - 8" CAN FOR ANNULAR CLEARANCE PER NFPA 13
 - 2" DRAIN UP TO FLOOR ABOVE
 - 4" CAN FOR ANNULAR CLEARANCE PER NFPA 13
 - 2" DRAIN DOWN TO FLOOR BELOW
 - 4" CAN FOR ANNULAR CLEARANCE PER NFPA 13
 - 2" DRAIN TO SANITARY CONNECTION
 - 1" AUXILIARY DRAIN NIPPLE, VALVE & PLUG
 - 1" AUXILIARY DRAIN PIPE TO SANITARY DRAIN
 - 7/8" MAX. IN SMALL ROOMS SEE DESIGN NOTE #1 ON SHEET FP-0.1
 - SPRINKLER OMITTED FROM BATHROOM SEE DESIGN NOTE #2 ON SHEET FP-0.1
 - SPRINKLERS OMITTED FROM OVERHANG SEE DESIGN NOTE #3 ON SHEET FP-0.1
 - SPRINKLERS OMITTED FROM VERTICAL SHAFT SEE DESIGN NOTE #4 ON SHEET FP-0.1
 - LAUNDRY OR GARBAGE CHUTE SPRINKLER PRE-INSTALLED & CONNECTED BY AEGIS
 - CPVC TO STEEL PIPE ADAPTER THREADED OR GROOVED AS APPLICABLE

- ### PIPING NOTES
- BRANCHLINE PIPING TO BE INSTALLED 6" FROM BOTTOM OF SLAB TO CENTER OF PIPE, TYPICAL.
 - BULK MAINS TO BE INSTALLED 1-0" FROM BOTTOM OF DECK TO CENTER OF PIPE, TYPICAL.
 - SYSTEM MAINS TO BE INSTALLED 1-8" FROM BOTTOM OF DECK TO CENTER OF PIPE, TYPICAL.
 - ALL EXPOSED PIPING SHALL BE STEEL PIPE PER GENERAL NOTE # 17 ON SHEET FP-0.1.

- ### CONCEALED SPACES
- ALL CONCEALED COMBUSTIBLE SPACES SHALL BE ENTIRELY FILLED WITH NONCOMBUSTIBLE INSULATION.
 - SPRINKLERS SHALL BE OMITTED FROM CONCEALED COMBUSTIBLE SPACES ENTIRELY FILLED WITH NONCOMBUSTIBLE INSULATION PER NFPA 13, 8.15.1.2.7

- ### SOFFIT NOTES
- ALL SOFFITS 24" OR LESS IN WIDTH TO BE PROTECTED IN ACCORDANCE WITH NFPA 13, SECTION 8.10.6.1.2 (4).
 - ALL SOFFITS MORE THAN 24" IN WIDTH TO BE PROTECTED IN ACCORDANCE WITH NFPA 13, SECTION 8.10.6.1.2 (3).

PIPE LEGEND

	WET BLACK STEEL
	WET CPVC PIPE

SPRINKLER LEGEND

Symbol	Manufacturer	SIN	Model	Quantity	K-Factor	Type	Size	Response	Finish	Temperature	Note
	Tyco	TY3551	RFII	35	5.6	Pendent	1/2"	Quick	White	200 °F	
	Tyco	TY2236	LFII	81	4.9	Pendent	1/2"	Fast	White	175 °F	MAX SPACING 18"X18"
				Total = 116							

STAMP

PROJECT
414 PETALUMA BLVD. APTS.
 414 PETALUMA BLVD. N.
 PETALUMA, CA 94954

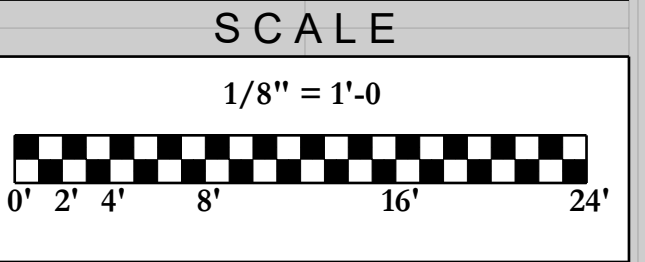
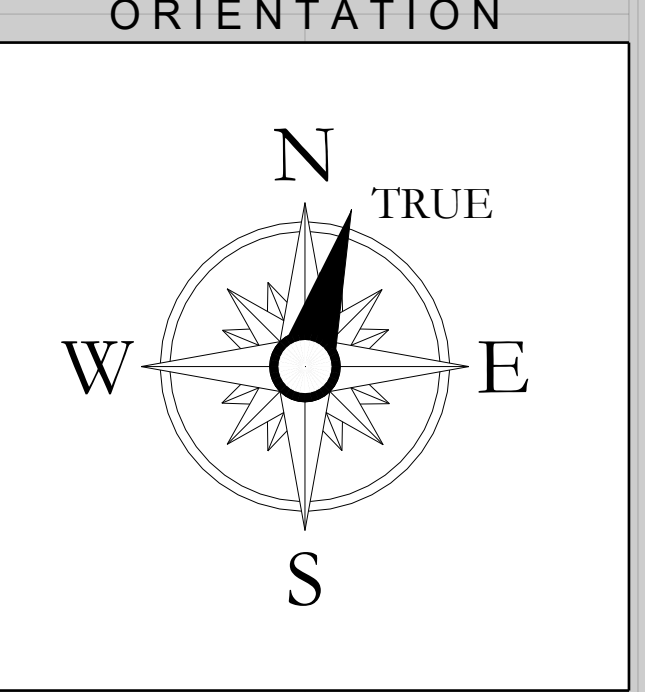
CUSTOMER

PHONE:
 WELD INSPECTION:

REVISIONS

NO.	DATE	DESCRIPTION

CITY SUPPLY
 STATIC PRESSURE: 64 PSI
 RESIDUAL PRESSURE: 62 PSI
 FLOW @ RESIDUAL: 1186 GPM
 TEST LOCATION: 244 PETALUMA BLVD.
 TEST DATE: 1/9/2020
 TESTING AGENCY:
 HYDRANT #: N/A



DESCRIPTION
FLOOR 4 SYSTEM PIPING PLAN

SHEET NUMBER
FP-1.5