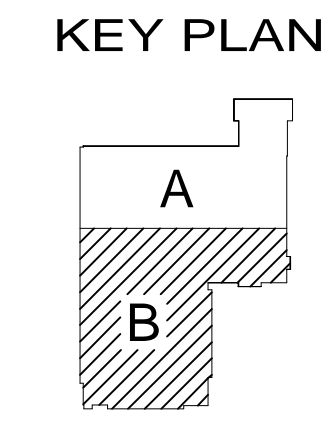


**Design Area # 5 HAZARD: LIGHT**  
 Zone: 2 System Type: WET  
 Location: BREAK ROOM  
 Flowing Outlets: 15 Remote Area: 1582  
 Density: 0.15 @ 81.7 psi  
 Flow: 614.1 gpm  
 Calculation Safety: 21.4 psi  
 Includes: 250 gpm Hose allowance

NOTE: CALCULATED PER PROJECT SPECIFICATION 0.15 GPM PER SQUARE FOOT OVER THE MOST HYDRAULICALLY REMOTE AREA OF 1,500 S.F. SPRINKLERS SPACED TO A MAXIMUM OF 150 S.F. IN LIGHT HAZARD AREAS PER PROJECT SPECIFICATION.

**Design Area # 7 Class: E.H.1**  
 Zone: 1 System Type: Wet  
 Location: SMALL SORT AREA  
 Flowing Outlets: 28 Remote Area: 2,571  
 Density: 0.3 @ 70.3 psi  
 Flow: 1403.3 gpm  
 Calculation Safety: 7.6 psi  
 Includes: 500 gpm Hose allowance

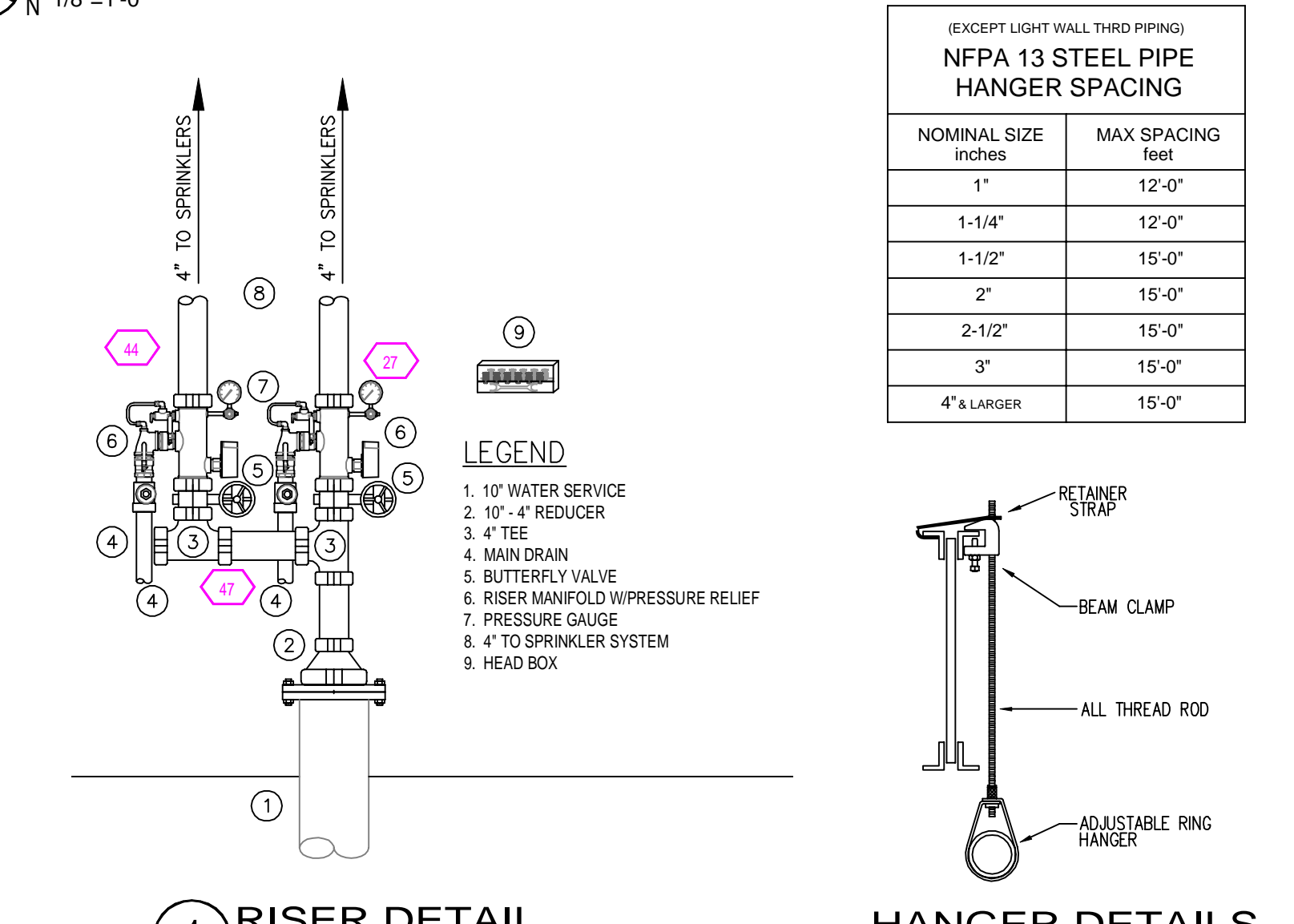
NOTE: CALCULATED PER PROJECT SPECIFICATION 0.30 GPM PER SQUARE FOOT OVER THE MOST HYDRAULICALLY REMOTE AREA OF 2,500 S.F. SPRINKLERS SPACED TO A MAXIMUM OF 100 S.F.



**GENERAL NOTES**

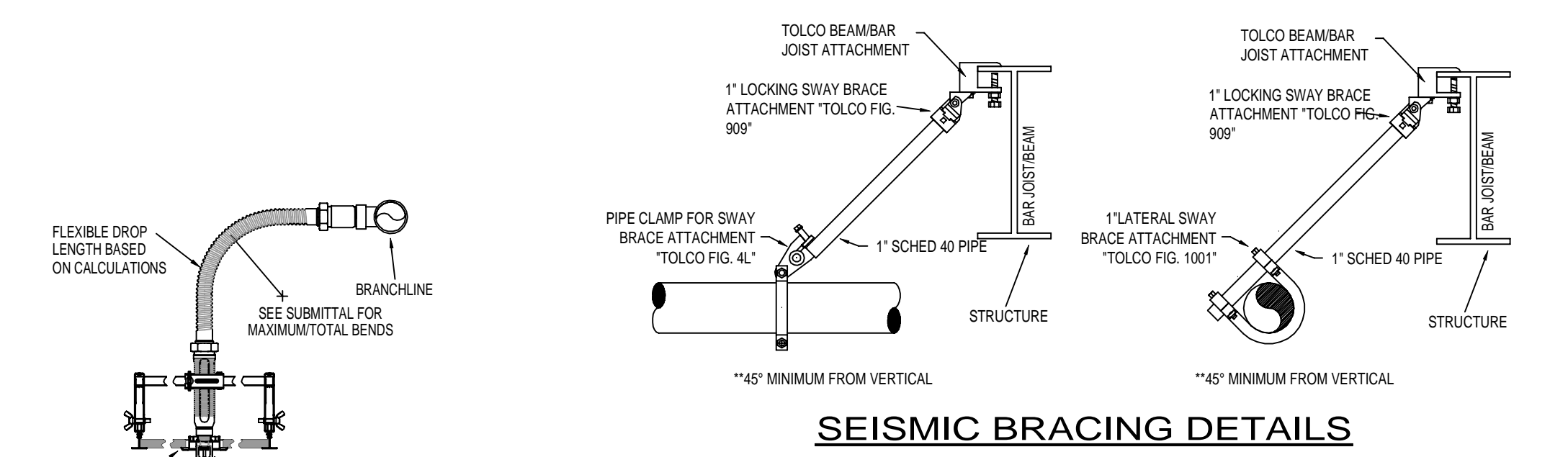
- INTERNATIONAL BUILDING CODE (2015)
  - OCCUPANCY: MIXED USE, NON-SEPARATED S-1
  - TYPE OF CONSTRUCTION: IIB
  - SPRINKLERED AREAS (APPROXIMATE - SEE ARCHITECTURAL PLANS FOR ACTUAL)
    - BUILDING 1 MAIN SORT & ADMIN = 50,747 S.F.
    - BUILDING 1 FLIGHT CONTROL = 2,659 S.F.
    - BUILDING 4 MAINTENANCE = 12,872 S.F.
  - INSTALLATION STANDARDS: SPRINKLER SYSTEM DESIGNED AND INSTALLED PER NFPA-13 (2013)
- SPRINKLER PIPE TYPES:
  - WET:
    - 1" BRANCH LINES TO BE BLK SCH. 40 PIPING WITH THREADED FITTINGS
    - 1 1/2" THROUGH 4" MAIN & BRANCH LINES TO BE SCH. 10 PIPING WITH GROOVED FITTINGS
    - MAINS & BRANCH LINES TO BE ROLL-GROOVED BLK SCHEDULE 10 PIPING
  - DRY & PRE-ACTION:
    - 1" BRANCH LINES TO BE THREADED BLK SCHEDULE 40 WITH THREADED FITTINGS
    - 2 1/2" THROUGH 4" MAIN & BRANCH LINES TO BE GROOVED BLK SCHEDULE 10 WITH GROOVED FITTINGS
    - MAINS & BRANCH LINES TO BE ROLL-GROOVED BLK SCHEDULE 10 PIPING
- DESIGN CRITERIA
  - WET PIPE SPRINKLER SYSTEM TO PROVIDE A DENSITY OF 0.30 GPM PER SQUARE FOOT OVER THE MOST HYDRAULICALLY REMOTE 2,500 SQUARE FEET, EXCEPT AS NOTED BELOW.
  - IN OFFICE COMPLEX ROOMS PROVIDE A DENSITY OF 0.15 GPM PER SQUARE FOOT OVER THE MOST HYDRAULICALLY REMOTE 1,500 SQUARE FEET.
  - DESIGN DRY PIPE SPRINKLER SYSTEM TO PROVIDE A DENSITY OF 0.30 GPM PER SQUARE FOOT OVER THE MOST HYDRAULICALLY REMOTE 3,500 SQUARE FEET.
- NOTES:
  - ALL MATERIAL TO BE NEW AND MEET U.L. STANDARDS
  - HANGERS TO BE INSTALLED IN ACCORDANCE WITH NFPA 13 (2013) - SEE PLAN FOR HANGING REQ.
  - DRY SYSTEM PIPE SLOPE INSTALLATION: SPRINKLER MAINS TO BE 1/4" PER 10 FEET; SPRINKLER BRANCH LINES TO BE 1/2" PER 10 FEET
  - DRY SYSTEM CAPACITY:
    - 327.5 GAL.
- SYMBOLS USED ON DRAWINGS:
  - 10" PIPE ELEVATION A.F.F.
  - 12" PIPE ELEVATION BELOW B.O.D.
  - ROOM HAZARD CLASSIFICATION (ALL ROOMS ARE CONSIDERED LIGHT HAZARD UNLESS NOTED)
  - HYDRAULIC CALCULATION JUNCTION POINT
  - CEILING HEIGHT
- SCOPE OF WORK:
  - MAIN BUILDING LARGE AND SMALL SORT-WET SYSTEM, WITH HOSE STATIONS
  - SORTING ADMINISTRATION AREA - WET SYSTEM
  - FLIGHT CONTROL - WET SYSTEM
  - MAINTENANCE BUILDING - WET & DRY SYSTEM
  - ALL AREAS OF THE BUILDING TO BE INSTALLED AND COVERED IN ACCORDANCE WITH THE LOCAL AUTHORITY HAVING JURISDICTION AND PER NFPA 13 (2013)

**BUILDING 1 FIRE SPRINKLER PLAN AREA B**  
 1/8"=1'-0"

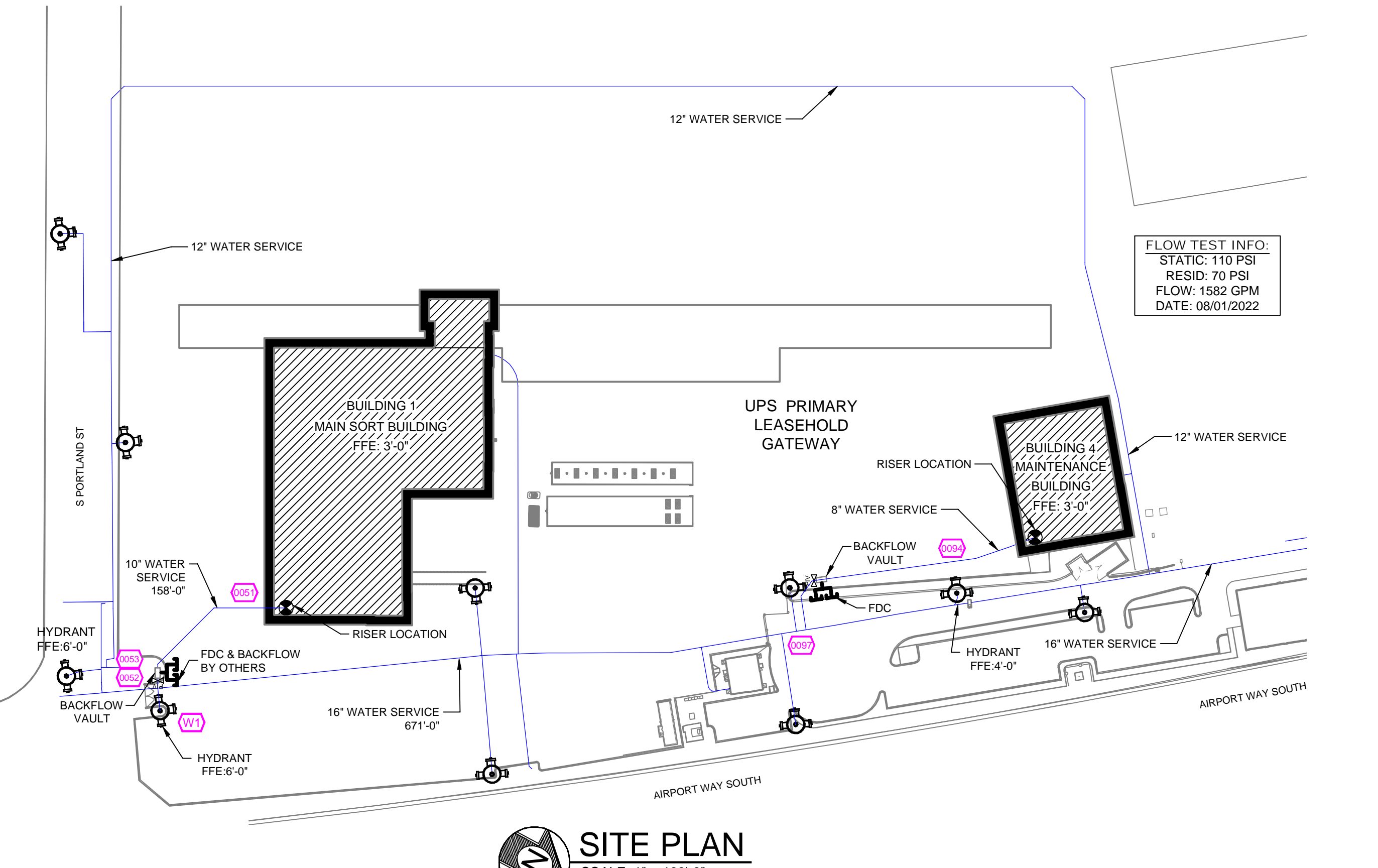


(EXCEPT LIGHT WALL THIRD PIPING)  
**NFPA 13 STEEL PIPE HANGER SPACING**

NOMINAL SIZE inches	MAX SPACING feet
1"	12'-0"
1-1/4"	12'-0"
1-1/2"	15'-0"
2"	15'-0"
2-1/2"	15'-0"
3"	15'-0"
4" & LARGER	15'-0"



SYM	CNT	POSITION	FINISH	TEMP	K	NPT	SN	MPG	MODEL#	DESC/REVISION	HEAD BOX
128	PENDENT	CHROME	150	8.00	1/2"	VK302	VKING	MICROFA	SEMI-RECESSED	2	FLEX-DROP
24	PENDENT	CHROME	280	11.20	1 1/4"	VK546	VKING	VK-DRY	SEMI-RECESSED	2	FLEX-DROP
24	PENDENT	CHROME	280	11.20	3/4"	VK336	VKING	VK-ELD	SEMI-RECESSED	2	FLEX-DROP
576	UPRIGHT	BRASS	280	11.20	3/4"	VK331	VKING	VK-ELD	N/A	2	
1752 TOTAL HEADS											



**ARCHITECT**  
 INTERDISCIPLINARY DESIGN  
 3131 ELLIOTT AVE. SUITE 400,  
 SEATTLE, WA. 98121

**GENERAL**  
 LAYTON/ABBOTT  
 3408 1ST AVE. SOUTH,  
 SEATTLE, WA. 98134  
 JADEN VILLINOW (206) 951-0894

**UPS BFI GATEWAY**  
 7277 PERIMETER RD SOUTH, SEATTLE WA 98108

**KEY PLAN**

**PROJECT MGR.**  
**SUPERINTENDENT**  
**APPROVED BY:**  
 OA / GC

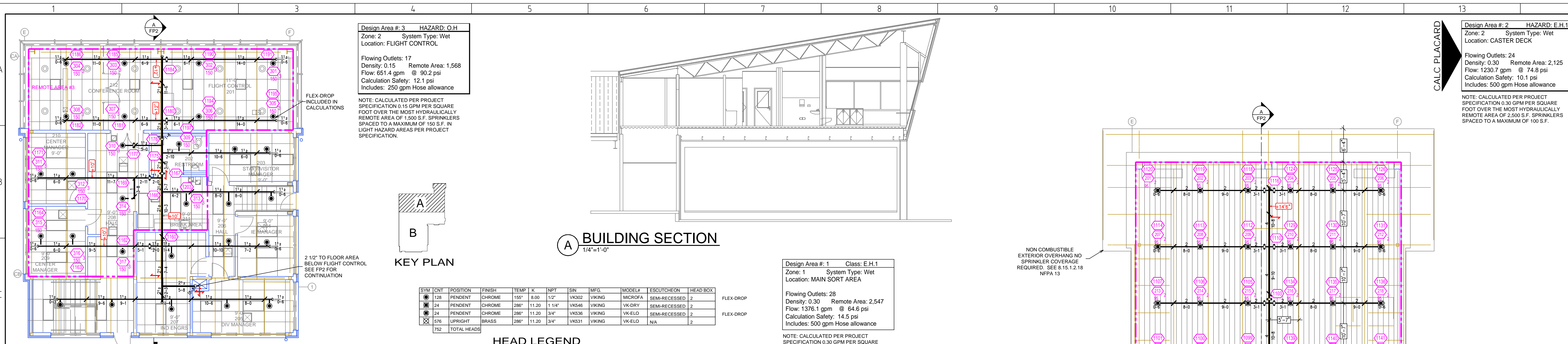
**REVIEW**

**DATE:** 08/01/2022

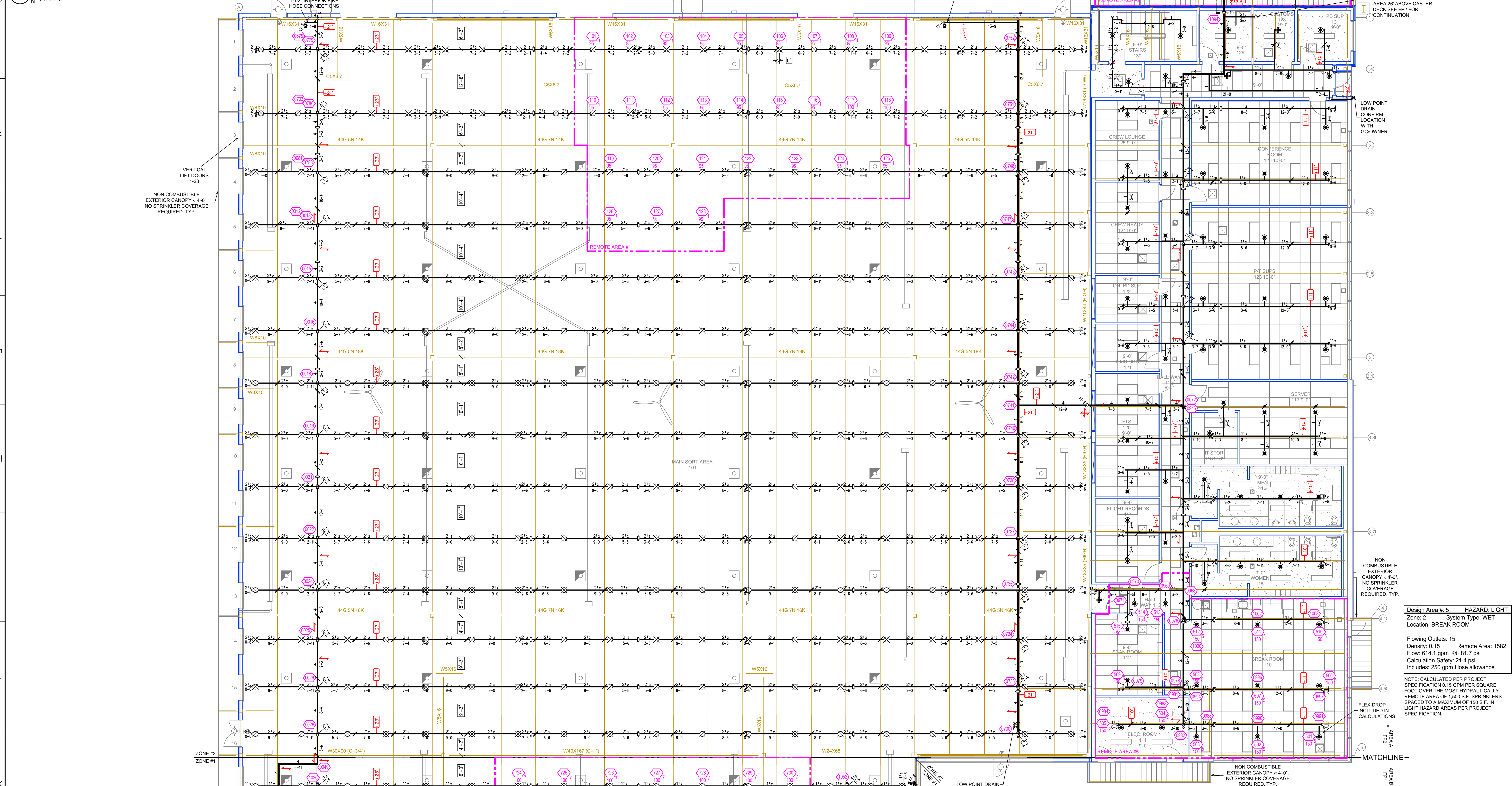
**SCALE:** 1/8" = 1'-0"

**BUILDING 1 AREA B**

**FP 1 OF 3**



**BUILDING 1 FLIGHT CONTROL FIRE SPRINKLER PLAN**  
1/8"=1'-0"



**BUILDING 1 FIRE SPRINKLER PLAN AREA A**  
1/4"=1'-0"

**Design Area # 3 HAZARD: O.H.**  
Zone: 2 System Type: Wet  
Location: FLIGHT CONTROL

Flowing Outlets: 17  
Density: 0.15 Remote Area: 1,568  
Flow: 651.4 gpm @ 90.2 psi  
Calculation Safety: 12.1 psi  
Includes: 250 gpm Hose allowance

NOTE: CALCULATED PER PROJECT SPECIFICATION 0.15 GPM PER SQUARE FOOT OVER THE MOST HYDRAULICALLY REMOTE AREA OF 1,500 S.F. SPRINKLERS SPACED TO A MAXIMUM OF 150 S.F. IN LIGHT HAZARD AREAS PER PROJECT SPECIFICATION.

**(A) BUILDING SECTION**  
1/4"=1'-0"

**Design Area # 1 Class: E.H.1**  
Zone: 1 System Type: Wet  
Location: MAIN SORT AREA

Flowing Outlets: 28  
Density: 0.30 Remote Area: 2,547  
Flow: 1376.1 gpm @ 64.6 psi  
Calculation Safety: 14.5 psi  
Includes: 500 gpm Hose allowance

NOTE: CALCULATED PER PROJECT SPECIFICATION 0.30 GPM PER SQUARE FOOT OVER THE MOST HYDRAULICALLY REMOTE AREA OF 2,500 S.F. SPRINKLERS SPACED TO A MAXIMUM OF 100 S.F.

SYM	CNT	POSITION	FINISH	TEMP	K	RPT	SN	MFG.	MODEL#	ESD/UT/CHRON	HEAD BOX	FLX-DROP
128	PENDENT		CHROME	155°	8.00	1/2"	WV302	VIKING	MICROPA	SEMI-RECESSED	2	FLX-DROP
134	PENDENT		CHROME	286°	11.20	1 1/4"	WV346	VIKING	VK DRY	SEMI-RECESSED	2	FLX-DROP
24	PENDENT		CHROME	286°	11.20	3/4"	VNS36	VIKING	VK-ELD	SEMI-RECESSED	2	FLX-DROP
576	UPRIGHT		BRASS	286°	11.20	3/4"	VNS31	VIKING	VK-ELD	NA	2	FLX-DROP
762	TOTAL HEADS											

**HEAD LEGEND**

**Design Area # 2 HAZARD: E.H.1**  
Zone: 2 System Type: Wet  
Location: CASTER DECK

Flowing Outlets: 24  
Density: 0.30 Remote Area: 2,125  
Flow: 1230.7 gpm @ 74.8 psi  
Calculation Safety: 10.1 psi  
Includes: 500 gpm Hose allowance

NOTE: CALCULATED PER PROJECT SPECIFICATION 0.30 GPM PER SQUARE FOOT OVER THE MOST HYDRAULICALLY REMOTE AREA OF 2,000 S.F. SPRINKLERS SPACED TO A MAXIMUM OF 100 S.F.

**Design Area # 5 HAZARD: LIGHT**  
Zone: 2 System Type: WET  
Location: BREAK ROOM

Flowing Outlets: 15  
Density: 0.15 Remote Area: 1582  
Flow: 614.1 gpm @ 81.7 psi  
Calculation Safety: 21.4 psi  
Includes: 250 gpm Hose allowance

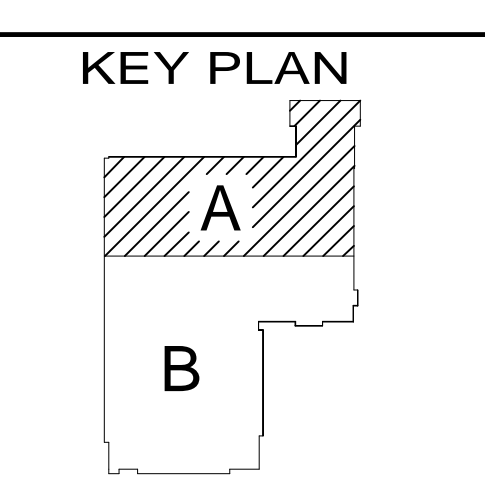
NOTE: CALCULATED PER PROJECT SPECIFICATION 0.15 GPM PER SQUARE FOOT OVER THE MOST HYDRAULICALLY REMOTE AREA OF 1,500 S.F. SPRINKLERS SPACED TO A MAXIMUM OF 150 S.F. IN LIGHT HAZARD AREAS PER PROJECT SPECIFICATION.

**ARCHITECT**  
INTERDISCIPLINARY DESIGN  
3131 ELLIOTT AVE. SUITE 400,  
SEATTLE, WA 98121

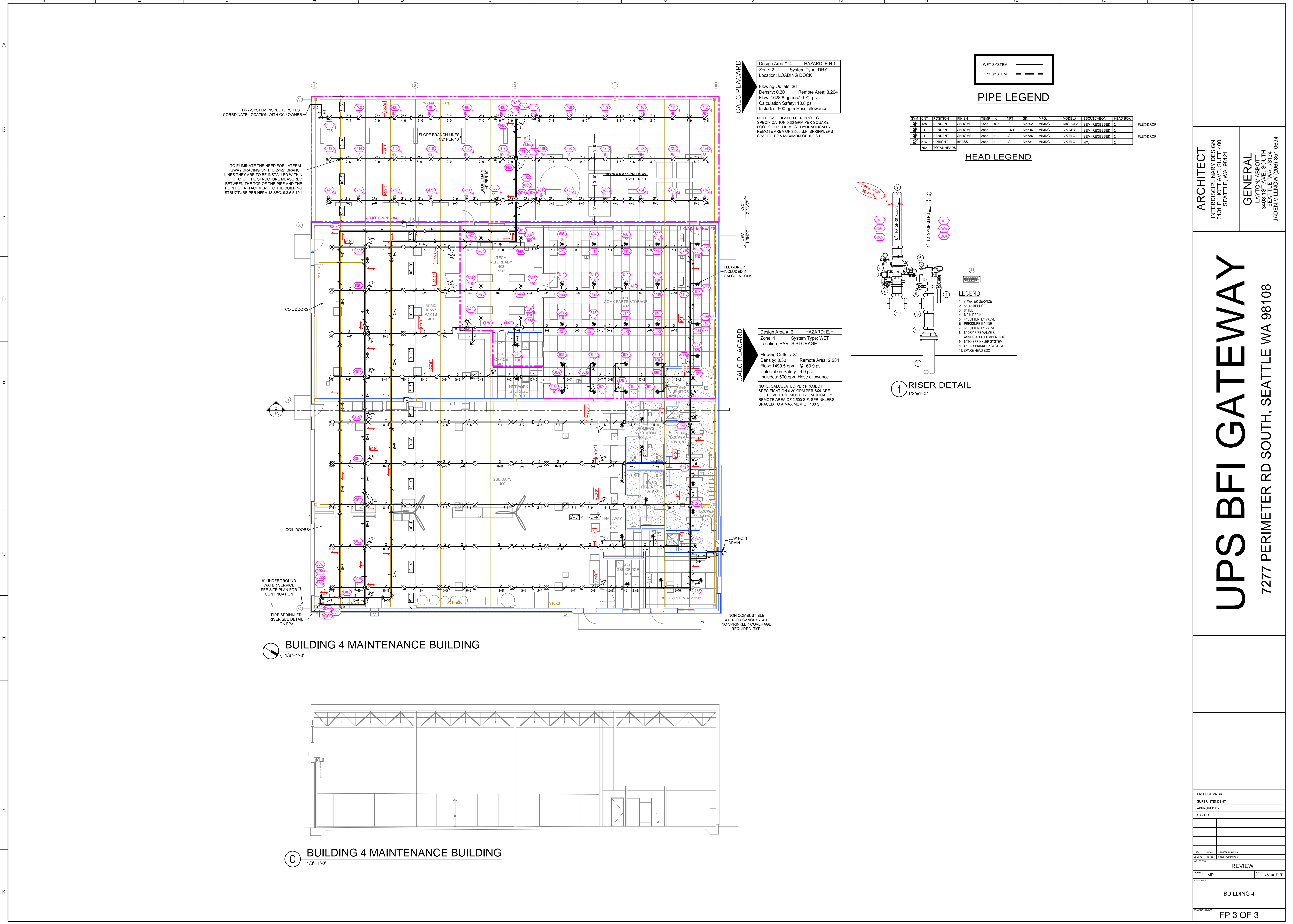
**GENERAL**  
LAYTON ABBOTT  
3408 1ST AVE. SOUTH,  
SEATTLE, WA 98134  
JADEN VILLINOW (206) 951-0894

# UPS BFI GATEWAY

7277 PERIMETER RD SOUTH, SEATTLE WA 98108



PROJECT MGR.	
SUPERINTENDENT	
APPROVED BY:	GA / OC
DATE:	
REVISION:	
BY:	MP
SCALE:	1/8" = 1'
TITLE:	BUILDING 1 AREA A
DATE:	



**Design Area #:** 4 HAZARD: E.H.1  
**Zone:** 2 System Type: DRY  
**Location:** LOADING DOCK

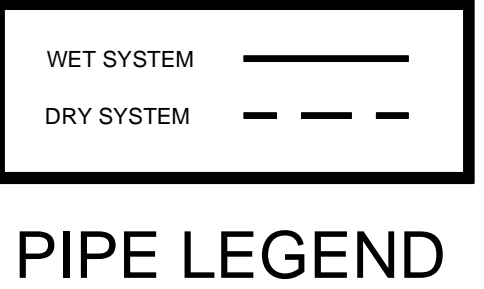
Flowing Outlets: 36  
 Density: 0.30 Remote Area: 3,204  
 Flow: 1628.8 gpm @ 57.0 psi  
 Calculation Safety: 10.8 psi  
 Includes: 500 gpm Hose allowance

NOTE: CALCULATED PER PROJECT SPECIFICATION 0.30 GPM PER SQUARE FOOT OVER THE MOST HYDRAULICALLY REMOTE AREA OF 3,500 S.F. SPRINKLERS SPACED TO A MAXIMUM OF 100 S.F.

**Design Area #:** 6 HAZARD: E.H.1  
**Zone:** 1 System Type: WET  
**Location:** PARTS STORAGE

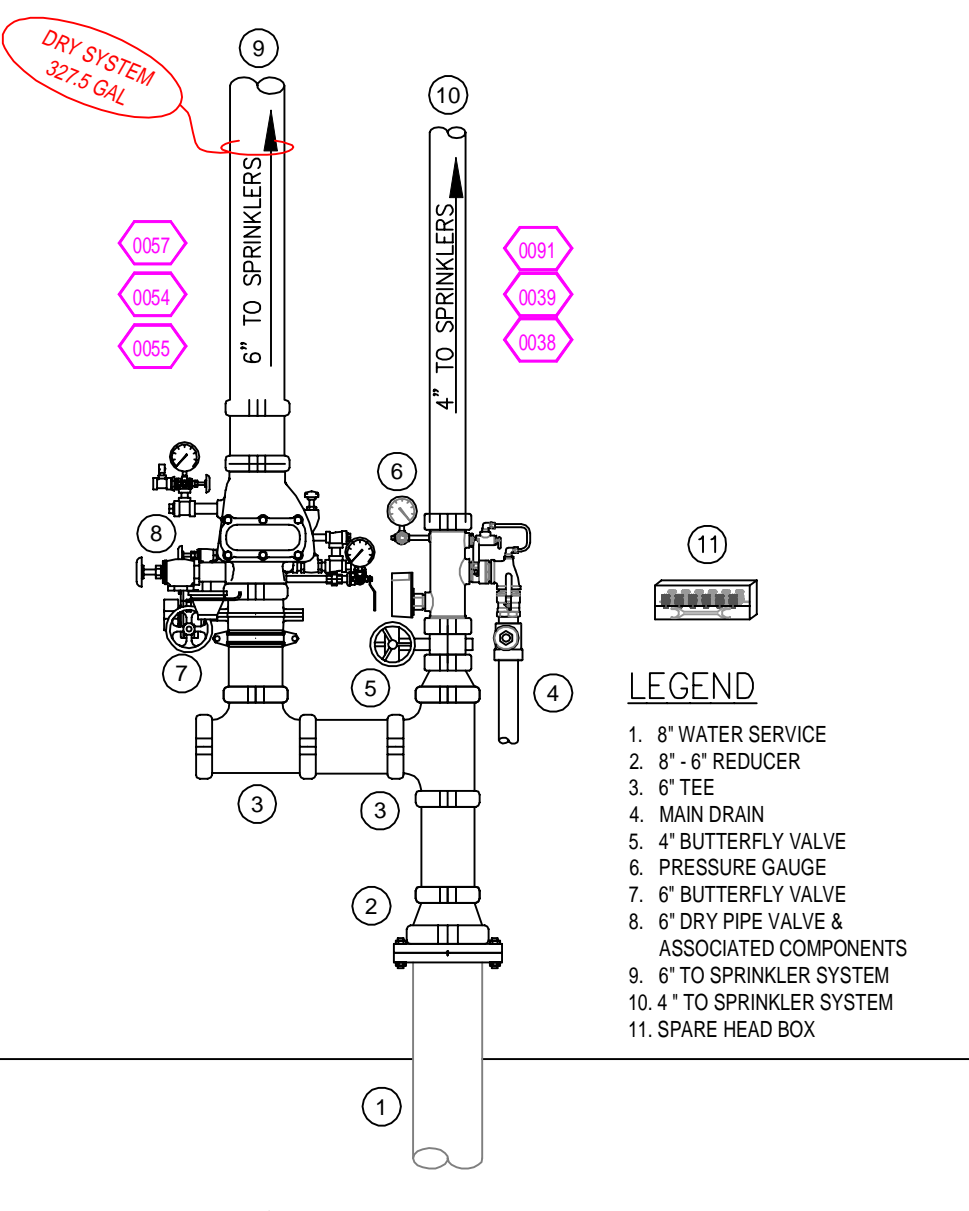
Flowing Outlets: 31  
 Density: 0.30 Remote Area: 2,534  
 Flow: 1499.5 gpm @ 63.9 psi  
 Calculation Safety: 9.9 psi  
 Includes: 500 gpm Hose allowance

NOTE: CALCULATED PER PROJECT SPECIFICATION 0.30 GPM PER SQUARE FOOT OVER THE MOST HYDRAULICALLY REMOTE AREA OF 2,500 S.F. SPRINKLERS SPACED TO A MAXIMUM OF 100 S.F.



SYM	CNT	POSITION	FINISH	TEMP	K	NPT	SN	MFG.	MODEL#	ESCU/CHRON	HEAD BOX	
●	128	PENDENT	CHROME	155°	8.00	1/2"	VK302	VIKING	MICROFA	SEM-RECESSED	2	FLEX-DROP
●	24	PENDENT	CHROME	280°	11.20	1 1/4"	VK546	VIKING	VK-DRY	SEM-RECESSED	2	FLEX-DROP
●	24	PENDENT	CHROME	280°	11.20	3/4"	VK536	VIKING	VK-ELO	SEM-RECESSED	2	FLEX-DROP
●	576	UPRIGHT	BRASS	280°	11.20	3/4"	VK531	VIKING	VK-ELO	NA	2	
⊗	752	TOTAL HEADS										

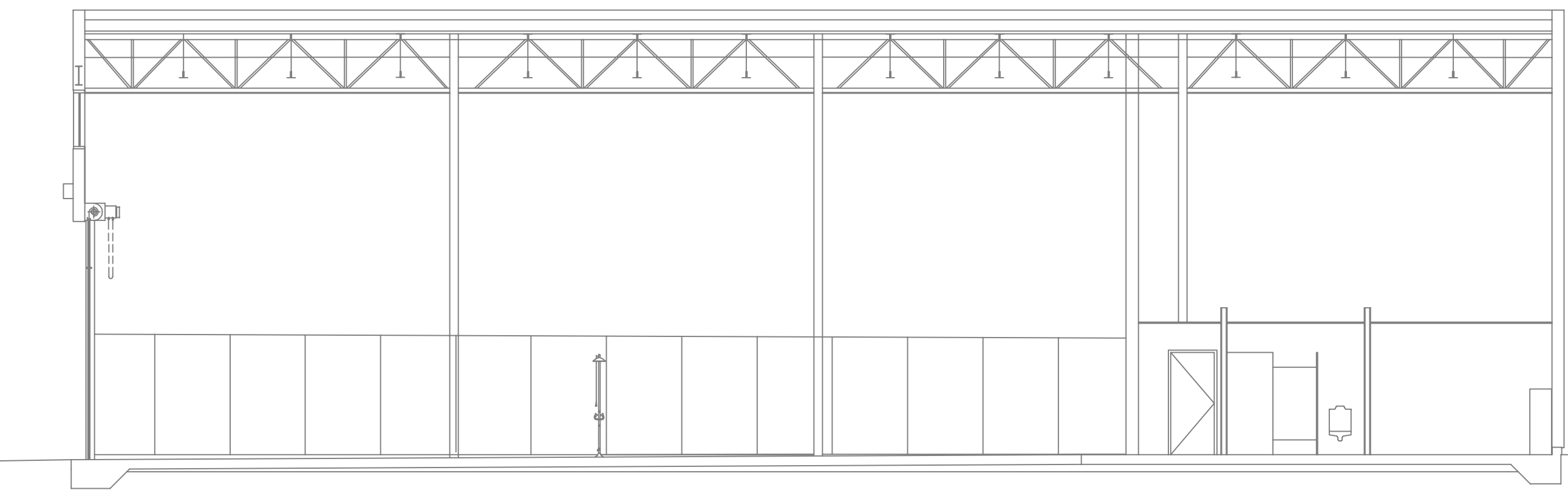
**HEAD LEGEND**



- LEGEND**
1. 8" WATER SERVICE
  2. 6" REDUCER
  3. 6" TEE
  4. MAIN DRAIN
  5. 4" BUTTERFLY VALVE
  6. PRESSURE GAUGE
  7. 6" BUTTERFLY VALVE
  8. 6" DRY PIPE VALVE & ASSOCIATED COMPONENTS
  9. 6" TO SPRINKLER SYSTEM
  10. 4" TO SPRINKLER SYSTEM
  11. SPARE HEAD BOX

**BUILDING 4 MAINTENANCE BUILDING**

1/8"=1'-0"



**BUILDING 4 MAINTENANCE BUILDING**

1/8"=1'-0"

**ARCHITECT**  
 INTERDISCIPLINARY DESIGN  
 3131 ELLIOTT AVE. SUITE 400,  
 SEATTLE, WA. 98121

**GENERAL**  
 LAYTON ABBOTT  
 3408 1ST AVE. SOUTH,  
 SEATTLE, WA. 98134  
 JADEN VILLINOW (206) 951-0894

# UPS BFI GATEWAY

7277 PERIMETER RD SOUTH, SEATTLE WA 98108

PROJECT MGR:		
SUPERINTENDENT:		
APPROVED BY:		
GA / GC:		
DATE:		
REVISION:		
NO.	DATE	DESCRIPTION
1		
2		
3		
4		
5		
6		
7		
8		
9		
10		
11		
12		
13		
14		
15		
16		
17		
18		
19		
20		
21		
22		
23		
24		
25		
26		
27		
28		
29		
30		
31		
32		
33		
34		
35		
36		
37		
38		
39		
40		
41		
42		
43		
44		
45		
46		
47		
48		
49		
50		
51		
52		
53		
54		
55		
56		
57		
58		
59		
60		
61		
62		
63		
64		
65		
66		
67		
68		
69		
70		
71		
72		
73		
74		
75		
76		
77		
78		
79		
80		
81		
82		
83		
84		
85		
86		
87		
88		
89		
90		
91		
92		
93		
94		
95		
96		
97		
98		
99		
100		