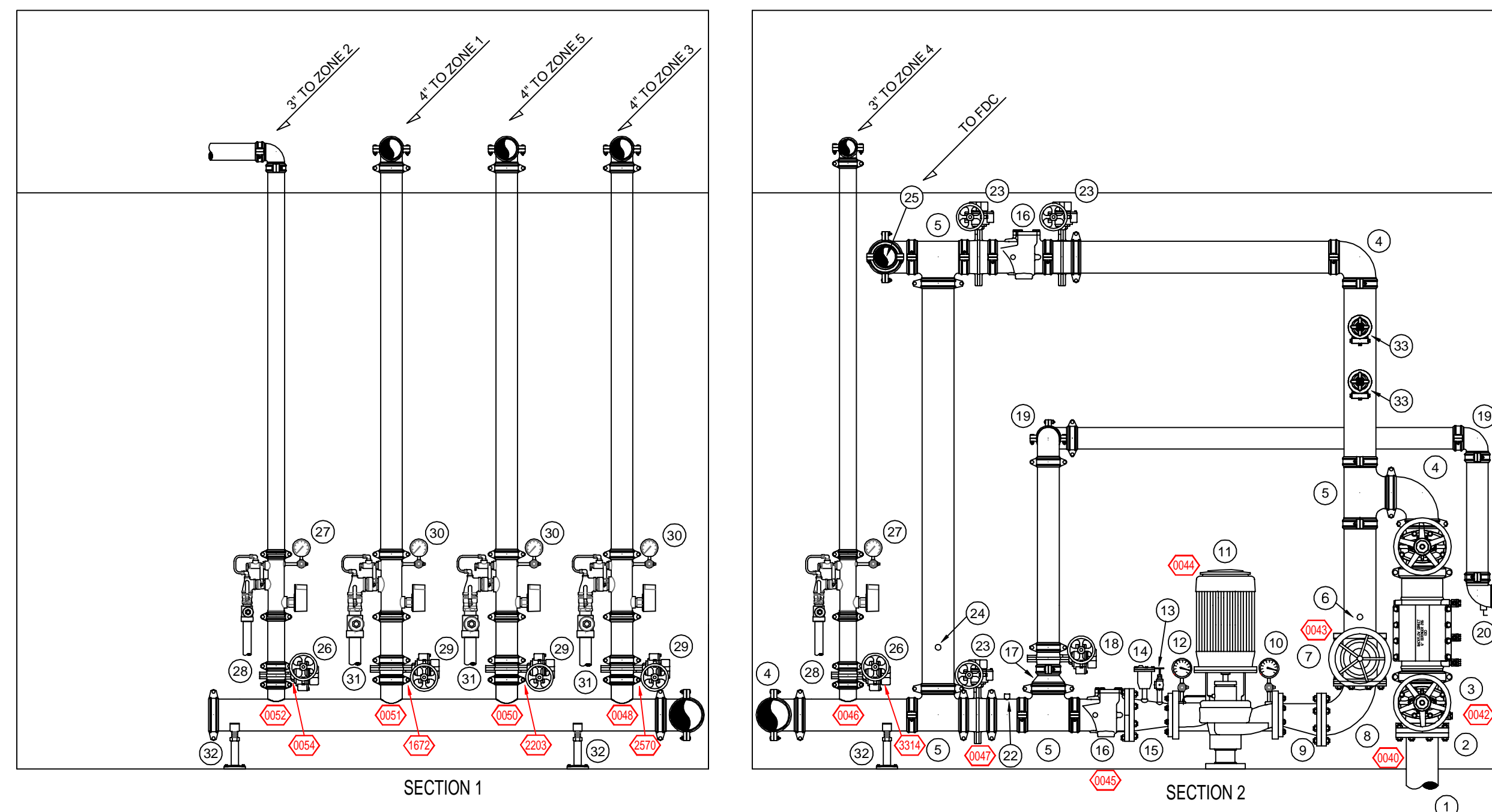


GENERAL NOTES

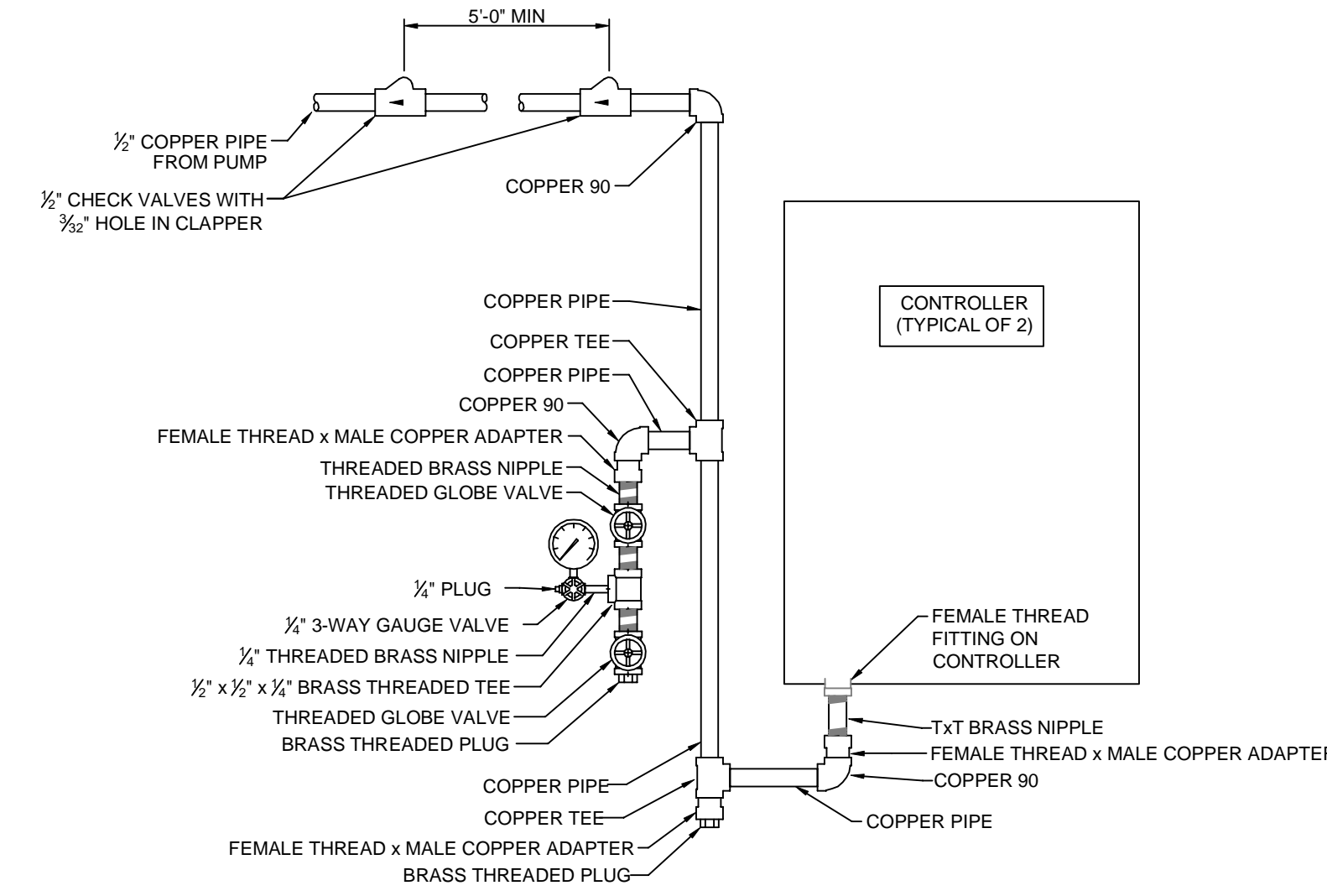
- MINNESOTA STATE BUILDING CODE (2020) AND MINNESOTA STATE FIRE CODE (2020)
  - OCCUPANCY: SCHOOL (GROUP E) AND ASSEMBLY (GROUPS A-1, A-2, AND A-3)
  - TYPE OF CONSTRUCTION: IIB (NON-RATED, NONCOMBUSTIBLE CONSTRUCTION)
  - SPRINKLERED AREAS (APPROXIMATE - SEE ARCHITECTURAL PLANS FOR ACTUAL)
    - ZONE 1 = 22,225 SF
    - ZONE 2 = 41,129 SF
    - UPPER LEVEL = 27,934 SF
    - ZONE 3 = 26,366 SF
    - ZONE 4 = 45,529 SF
    - ZONE 5 = 17,104 SF
    - TOTAL = 180,307 SF
- INSTALLATION STANDARDS: NFPA 13 (2016) AND NFPA 20 (2016)
- SPRINKLER PIPE TYPES:
  - 1" BRANCH LINES TO BE BLK SCHEDULE 40 PIPING WITH THREADED AND/OR IGS GROOVED FITTINGS
  - 1 1/2" THROUGH 2" MAIN & BRANCH LINES TO BE BLK SCHEDULE 40 PIPING WITH SHORT RADIUS GROOVED FITTINGS
  - 2 1/2" THROUGH 6" MAIN & BRANCH LINES TO BE BLK SCHEDULE 10 PIPING WITH SHORT RADIUS GROOVED FITTINGS
- DESIGN CRITERIA:
  - LIGHT HAZARD AREAS (CLASSROOMS, BATHROOMS, CIRCULATIONS, ETC. UNO) DESIGNED TO DELIVER 0.10 GPM/SF OVER THE MOST DEMANDING 1500 SF
  - ORDINARY HAZARD GROUP 1 AREAS (STORAGE, AUTO SHOP, AG LAB, FAC'S, CLOSETS, KITCHEN AREAS, ETC. AS NOTED) DESIGNED TO DELIVER 0.15 GPM/SF OVER THE MOST DEMANDING 1500 SF
  - ORDINARY HAZARD GROUP 2 AREAS (SCIENCE LABS, WOOD AND METAL SHOPS, WRESTLING ROOM, STAGE, RECEIVING ETC. AS NOTED) DESIGNED TO DELIVER 0.20 GPM/SF OVER THE MOST DEMANDING 1500 SF
  - REMOTE AREA REDUCTIONS HAVE BEEN TAKEN WHERE APPLICABLE PER NFPA 13.11.2.3.2.3
- NOTES:
  - ALL MATERIAL TO BE NEW AND MEET U.L. STANDARDS
  - HANGERS TO BE INSTALLED IN ACCORDANCE WITH NFPA 13 - SEE PLAN FOR HANGING REQUIREMENTS
- SYMBOLS USED ON DRAWINGS:
  - PIPE ELEVATION A.F.F.
  - ROOM HAZARD CLASSIFICATION (ALL ROOMS ARE CONSIDERED LIGHT HAZARD UNLESS NOTED)
  - HYDRAULIC CALCULATION JUNCTION POINT
  - CEILING HEIGHT
  - SPRINKLER HEAD CAGE
- SCOPE OF WORK:
  - PROVIDE AND INSTALL NEW 5 ZONE WET FIRE SPRINKLER SYSTEM WITH FIRE PUMP
  - ALL AREAS OF THE BUILDING TO BE INSTALLED AND COVERED IN ACCORDANCE WITH THE LOCAL AUTHORITY HAVING JURISDICTION AND PER NFPA 13



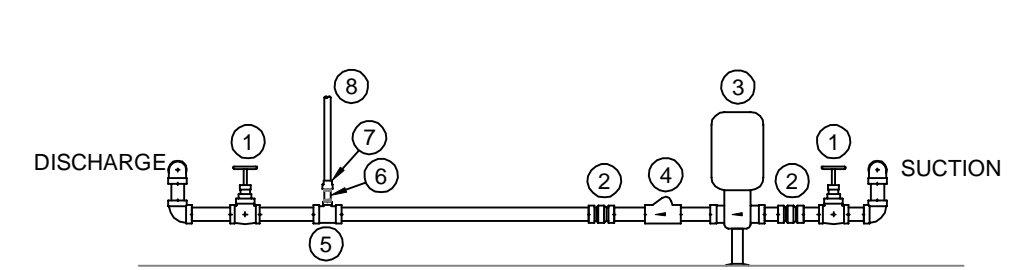
FIRE PUMP/RISER DETAIL  
SCALE: 1/2" = 1'-0"

FIRE PUMP/RISER LEGEND

- 6" UNDERGROUND WATER SERVICE (BY OTHERS) (FLUSHING & TESTING OF THE UNDERGROUND SHALL BE COMPLETED PRIOR TO THE SPRINKLER SYSTEM HOOKUP. UNDERGROUND PAPERS ARE TO BE SUPPLIED TO THE FPI CONTRACTOR BY THE O.C.)
- 6" GROOVE FLANGE ADAPTER
- 6" AMES C200 BACKFLOW W/ SUPERVISED OS&Y VALVES
- 6" GROOVED 90
- 6" GROOVED TEE
- 1/2" TO JOCKEY PUMP SUCTION
- 6" FLANGED SUPERVISED OS&Y VALVE
- 6" FLANGED 90
- 6"x4" FLANGED ECCENTRIC REDUCER
- SUCTION GAUGE
- 500 GPM @ 45 PSI VERTICAL IN-LINE FIRE PUMP
- DISCHARGE GAUGE
- CIRCULATION RELIEF VALVE
- AIR RELEASE VALVE
- 4" GROOVED CONCENTRIC INCREASER
- 6" GROOVED CHECK VALVE
- 6"x4" GROOVED CONCENTRIC REDUCER
- 4" GROOVED SUPERVISED BUTTERFLY VALVE (NORMALLY CLOSED)
- 4" GROOVED 90
- 4" GROOVED DRAIN 90 w/ 1" x 1/2" BUSHING AND BALL DRIP
- FIRE PUMP TEST HEADER
- 1" x 1/2" BUSHING TO FIRE PUMP SENSING LINE
- 6" GROOVED SUPERVISED BUTTERFLY VALVE (NORMALLY OPEN)
- 1/2" FROM JOCKEY PUMP DISCHARGE
- 6" GROOVED 90 w/ 6"x4" GROOVED CONCENTRIC REDUCER TO FDC
- 3" GROOVED SUPERVISED BUTTERFLY VALVE (NORMALLY OPEN)
- 3" RISER MANIFOLD w/ FLOW SWITCH, TEST AND DRAIN W/ PRESSURE RELIEF VALVE
- 1/2" TO MAIN DRAIN
- 4" GROOVED SUPERVISED BUTTERFLY VALVE (NORMALLY OPEN)
- 4" RISER MANIFOLD w/ FLOW SWITCH, TEST AND DRAIN W/ PRESSURE RELIEF VALVE
- 2" TO MAIN DRAIN
- PIPE STAND
- 2 1/2" HOSE VALVES FOR BACKFLOW TEST CONNECTIONS



CONTROLLER DETAIL  
N.T.S.



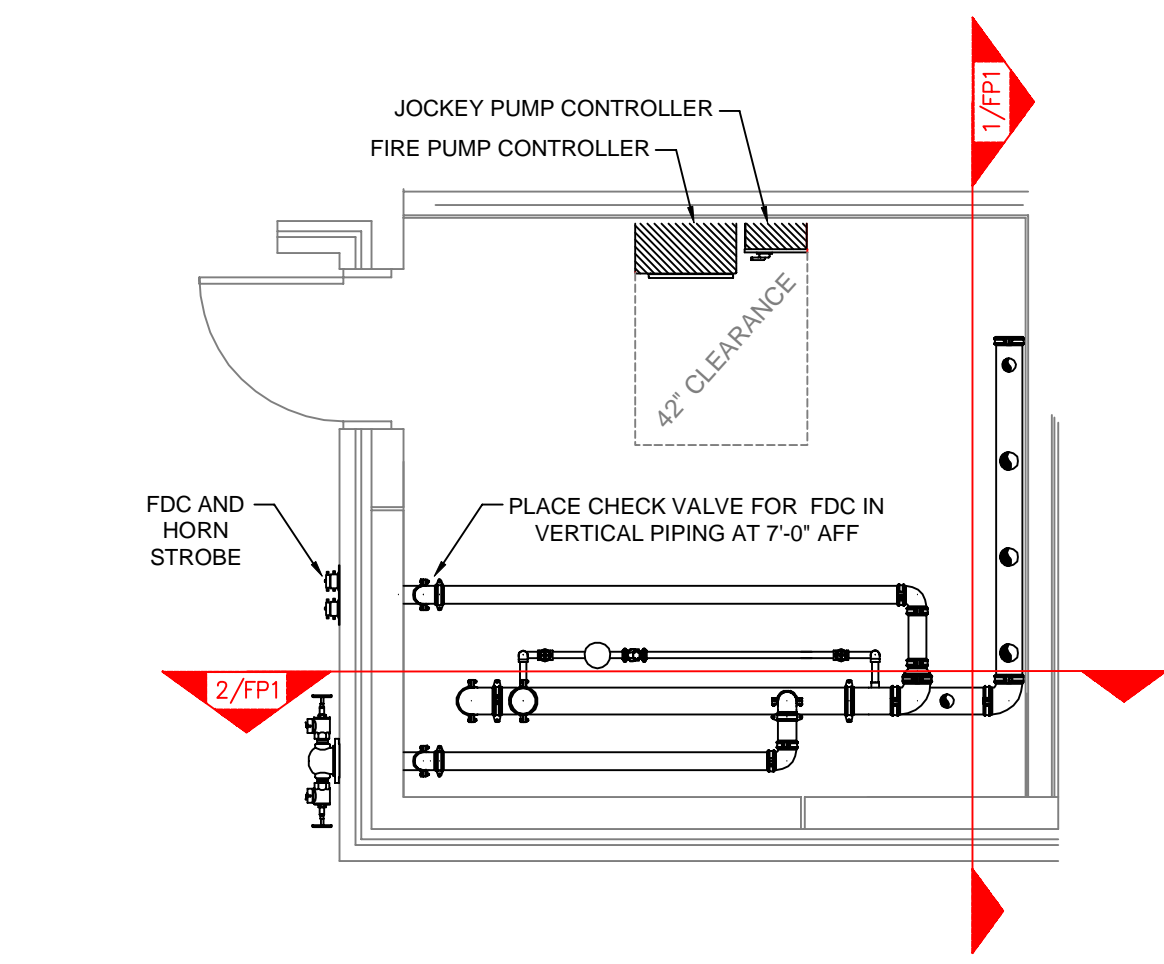
JOCKEY PUMP DETAIL  
SCALE: 1/2" = 1'-0"

JOCKEY PUMP LEGEND

- 1/2" THREADED GLOBE VALVE
- 1/2" THREADED UNION
- JOCKEY PUMP
- 1/2" THREADED CHECK VALVE
- 1/2" x 1/2" THREADED TEE
- 3/4" BRASS THREADED NIPPLE
- 3/4" FEMALE THREAD x FEMALE COPPER ADAPTER
- 3/4" COPPER SENSING LINE TO CONTROLLER

FIRE PUMP ROOM PLAN VIEW

SCALE: 1/4" = 1'-0"

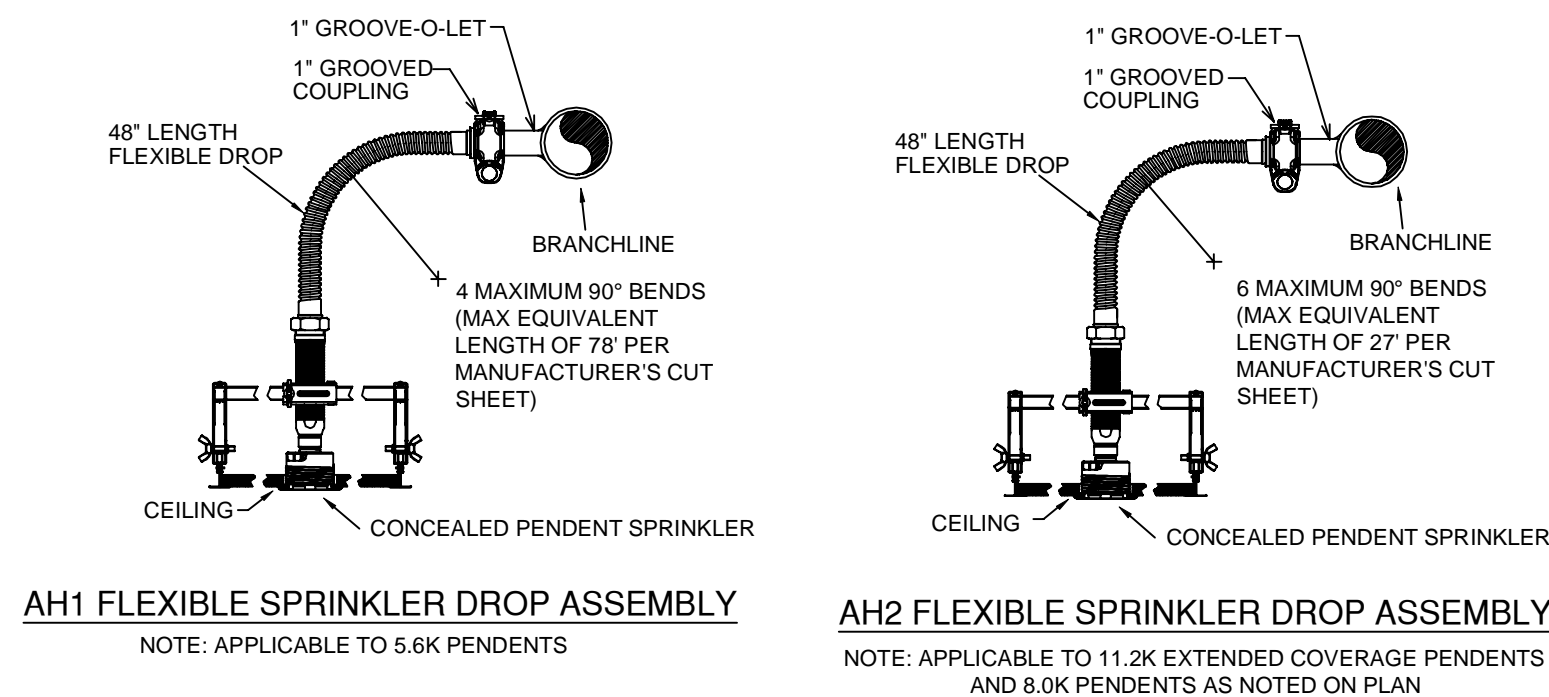


JOCKEY PUMP DETAIL

SCALE: 1/2" = 1'-0"

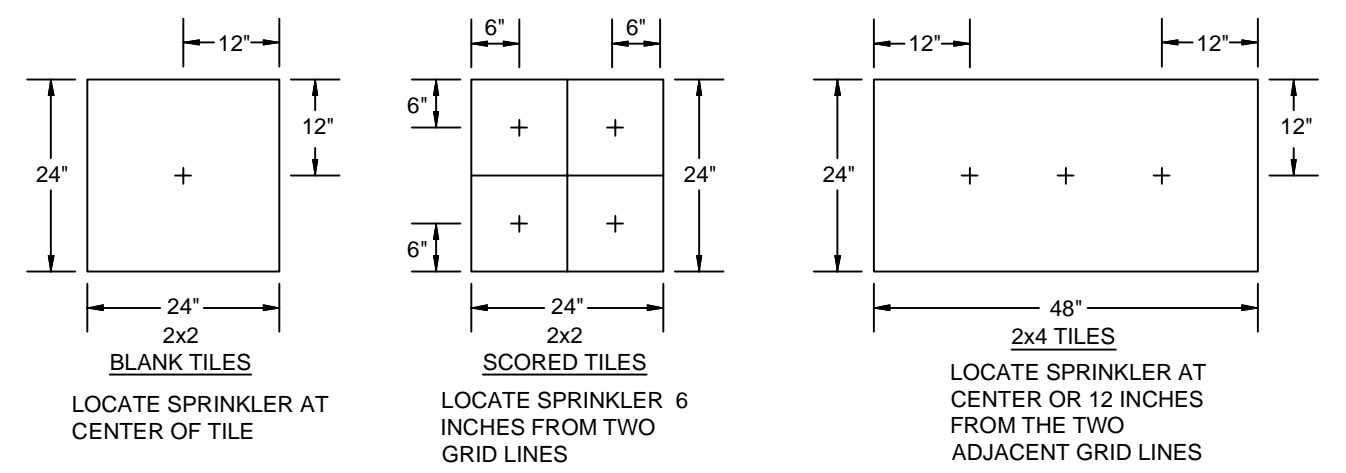
JOCKEY PUMP LEGEND

- 1/2" THREADED GLOBE VALVE
- 1/2" THREADED UNION
- JOCKEY PUMP
- 1/2" THREADED CHECK VALVE
- 1/2" x 1/2" THREADED TEE
- 3/4" BRASS THREADED NIPPLE
- 3/4" FEMALE THREAD x FEMALE COPPER ADAPTER
- 3/4" COPPER SENSING LINE TO CONTROLLER



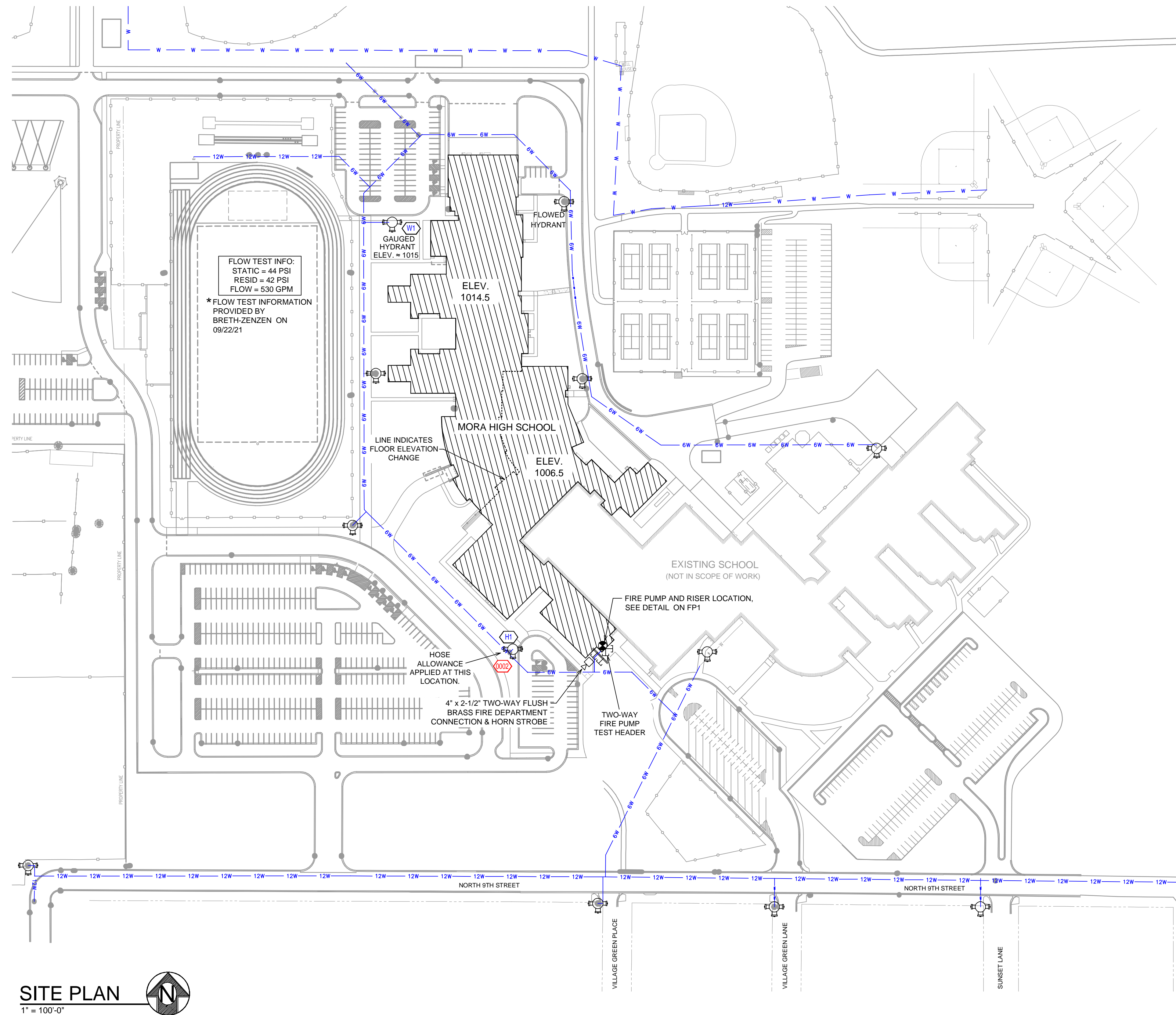
AH1 FLEXIBLE SPRINKLER DROP ASSEMBLY  
NOTE: APPLICABLE TO 5.6K PENDENTS

AH2 FLEXIBLE SPRINKLER DROP ASSEMBLY  
NOTE: APPLICABLE TO 11.2K EXTENDED COVERAGE PENDENTS AND 8.0K PENDENTS AS NOTED ON PLAN



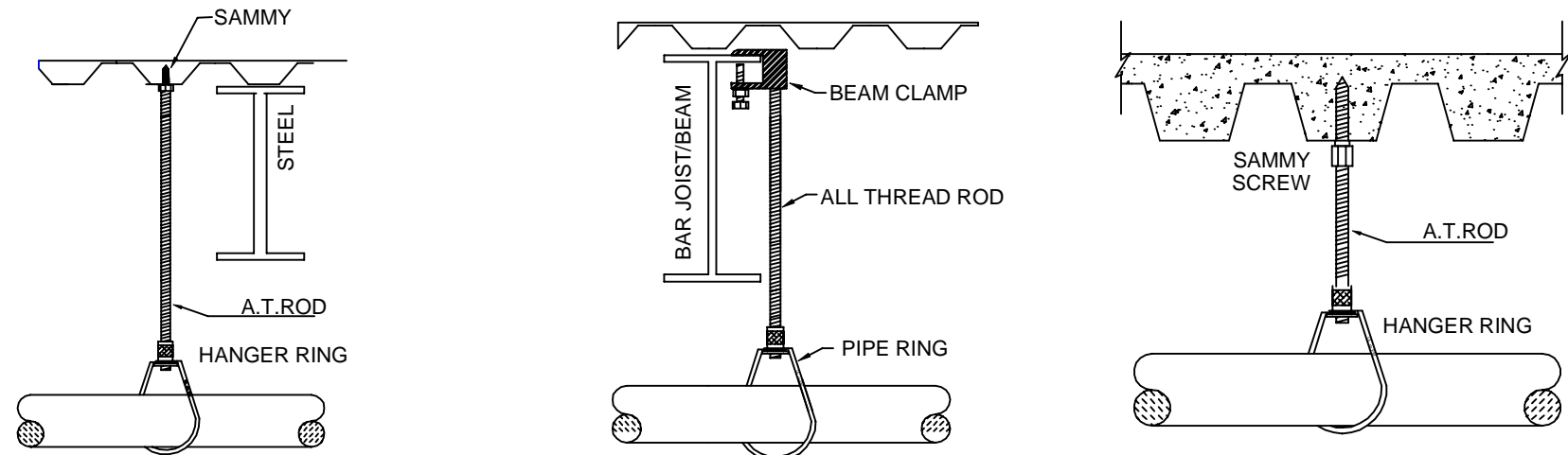
SPRINKLER PLACEMENT DETAIL

INSTALLATION DETAILS



SITE PLAN  
1" = 100'-0"

1" = 100'-0"



NOTE: ALL THREAD ROD TO BE 3/8" FOR PIPE 4" AND SMALLER AND 1/2" FOR PIPE 6" AND LARGER.

MAXIMUM DISTANCE BETWEEN HANGERS (FT.-IN.)

STEEL PIPE EXCEPT THREADED LIGHTWALL	NOMINAL PIPE SIZE (IN.)					
	1/2"	1"	1 1/2"	2"	2 1/2"	3"
	12-0	12-0	15-0	15-0	15-0	15-0

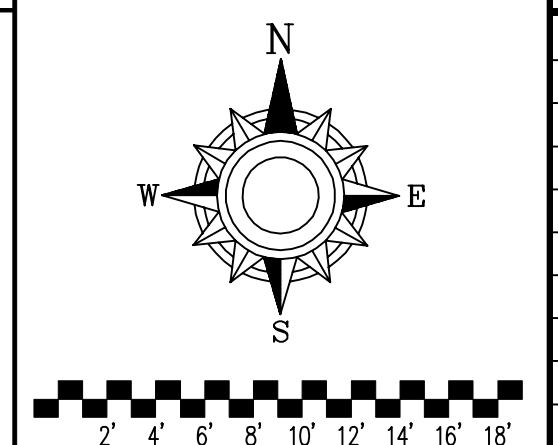
NFPA 13 HANGER SPACING

HANGER DETAILS

SYM	CNT	POSITION	FINISH	TEMP	K	NPT	SIN	MFG.	MODEL#	ESCUY/CHEON	MAX SPACING U.N.O.
U	279	UPRIGHT	BRASS	200	5.60	1/2"	TY313	TYCO	TY-FRB	N/A	121 S.F. (OH) / 190 S.F. (LH)
S	189	SPRIG	BRASS	200	5.60	1/2"	TY313	TYCO	TY-FRB	N/A	121 S.F. (OH) / 190 S.F. (LH)
U	2	UPRIGHT	BRASS	200	5.60	1/2"	TY313	TYCO	TY-FRB	W/SHIELD	225 S.F.
U	101	UPRIGHT	BRASS	200	8.00	3/4"	TY4131	TYCO	TY-FRB	N/A	106 S.F.
S	9	SPRIG	BRASS	200	8.00	3/4"	TY4131	TYCO	TY-FRB	N/A	106 S.F.
U	43	UPRIGHT	BRASS	200	11.20	3/4"	TY3137	TYCO	EC-11	N/A	16 X 16
D	5	DRY PENDENT	CHROME	200	5.60	1"	R6714	RELIABLE	F3GR	STANDARD	130 S.F.
P	322	PENDENT	BRASS	200	5.60	1/2"	TY3511	TYCO	RPI	CONCEALED	99 S.F. (OH) / 148 S.F. (LH)
P	16	PENDENT	BRASS	200	5.60	1/2"	TY3511	TYCO	RPI	CONCEALED	130 S.F.
P	20	PENDENT	BRASS	200	5.60	1/2"	TY323	TYCO	TY-FRB	N/A	225 S.F.
P	93	PENDENT	BRASS	212	8.00	3/4"	RA3412	RELIABLE	G5	CONCEALED	120 S.F.
P	255	PENDENT	BRASS	165	11.20	3/4"	R7146	RELIABLE	G4-XLO	CONCEALED	16 X 16
P	27	PENDENT	BRASS	200	8.00	3/4"	TY4231	TYCO	TY-FRB	N/A	130 S.F.
S	13	SIDEWALL	BRASS	200	5.60	1/2"	TY331	TYCO	TY-FRB	N/A	14 X 14
S	1	SIDEWALL	BRASS	165	5.60	1/2"	RA5035	RELIABLE	G6	CONCEALED	14 X 14
	1413	TOTAL									

NOTE: INTERMEDIATE TEMP HEADS USED THROUGHOUT PER NFPA 13.8.3.2.1

HEAD LEGEND

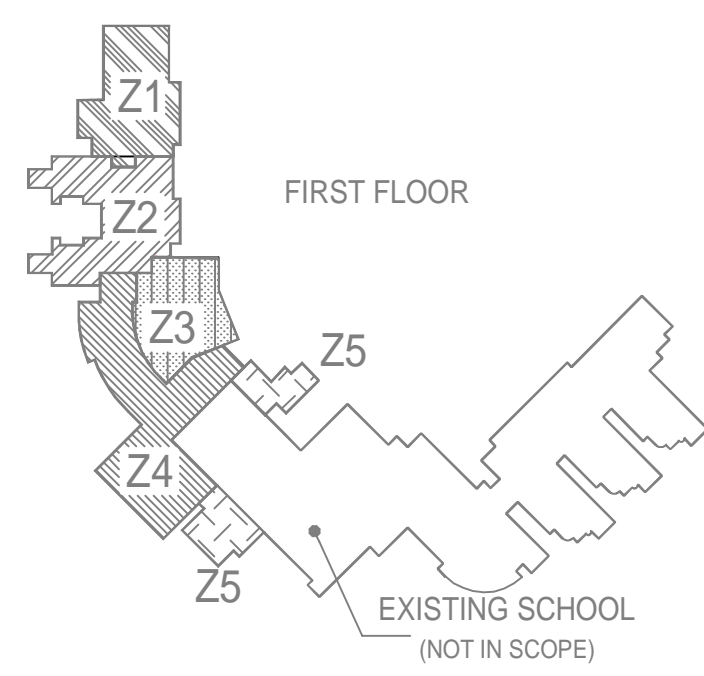


NO.	REVISIONS	DATE	APPROVAL STAMPS

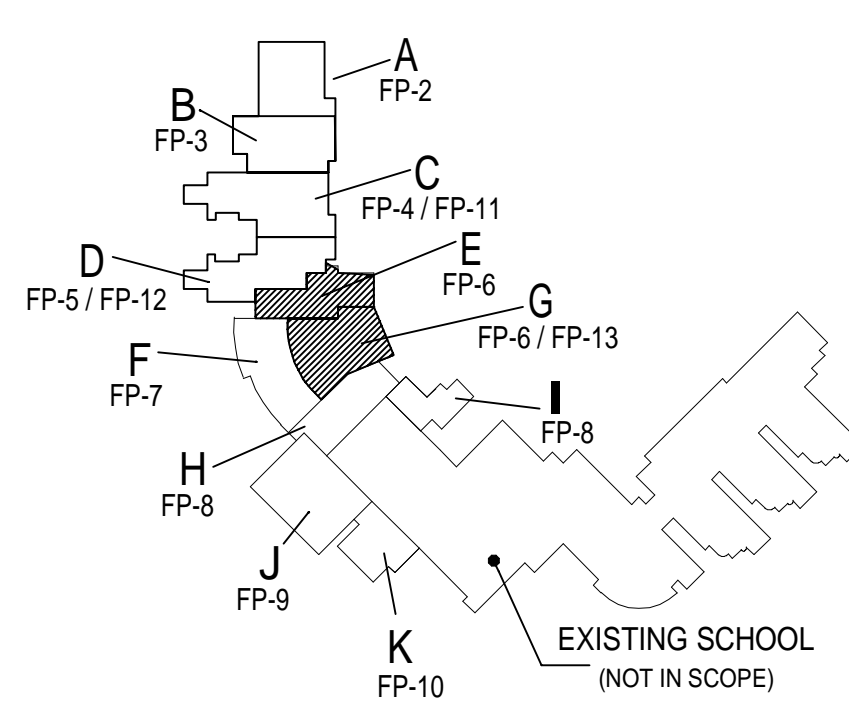
Drawing Title: FIRE PROTECTION PLAN

**MORA HIGH SCHOOL**  
200 N 9TH STREET  
MORA, MN 55051

Contract No. C21-45  
Drawing Date: 01/14/2022  
Scale: 1/8" = 1'-0"  
Drawn By: AMM  
Approval By: STATE FIRE MARSHAL DIV.  
SHEET NO. 1 of 13

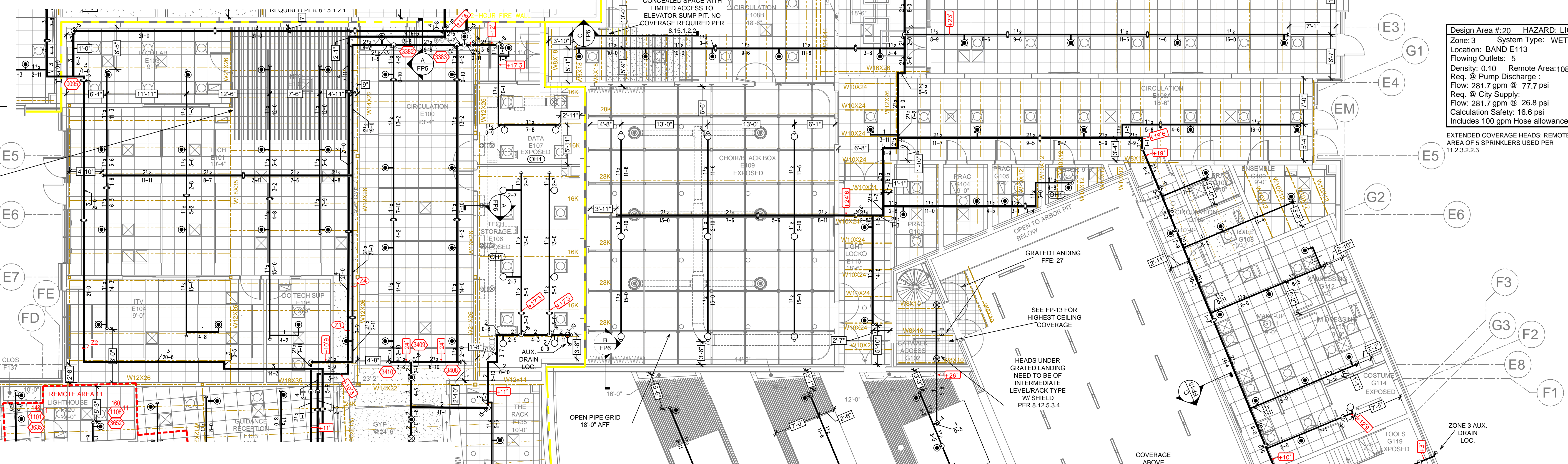


**ZONE MAP**  
SCALE: N.T.S.



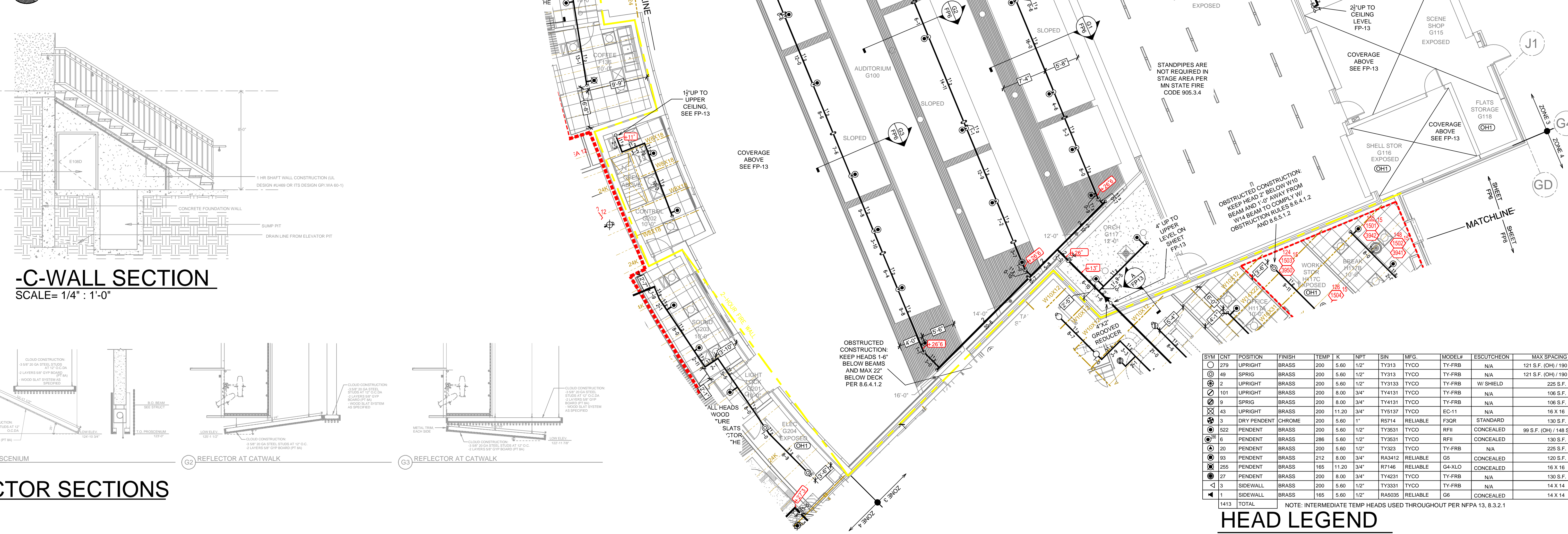
**KEY PLAN**  
SCALE: N.T.S.

**INSTRUMENT STOR. MEZZ.**  
SCALE = 1/8" : 1'-0"

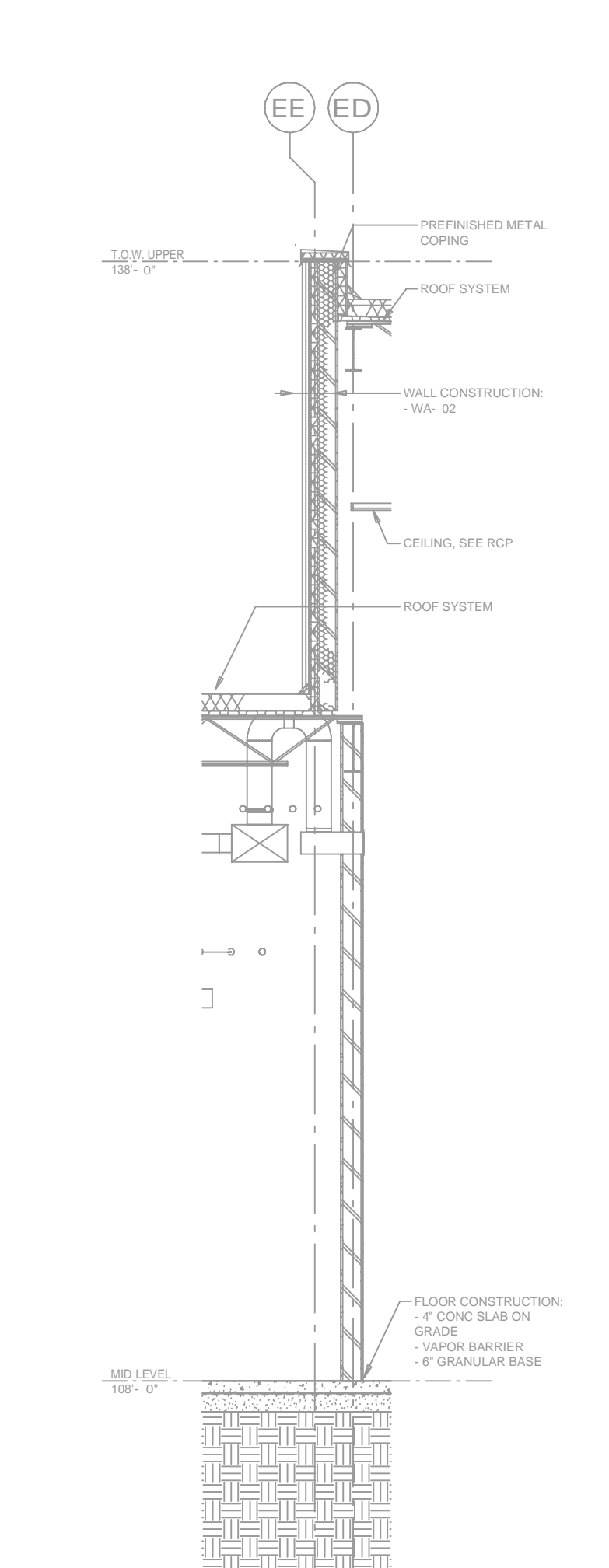


Design Area #20 HAZARD: LIGHT  
Zone 3 System Type: WET  
Location: BAND E113  
Flowing Outlets: 5  
Density: 0.10 Remote Area: 1084  
Req. @ Pump Discharge  
Flow: 281.7 gpm @ 77.7 psi  
Req. @ City Supply  
Flow: 281.7 gpm @ 26.8 psi  
Calculation Safety: 16.6 psi  
Includes 100 gpm Hose allowance  
  
EXTENDED COVERAGE HEADS: REMOTE AREA OF 5 SPRINKLERS USED PER 11.2.3.2.3

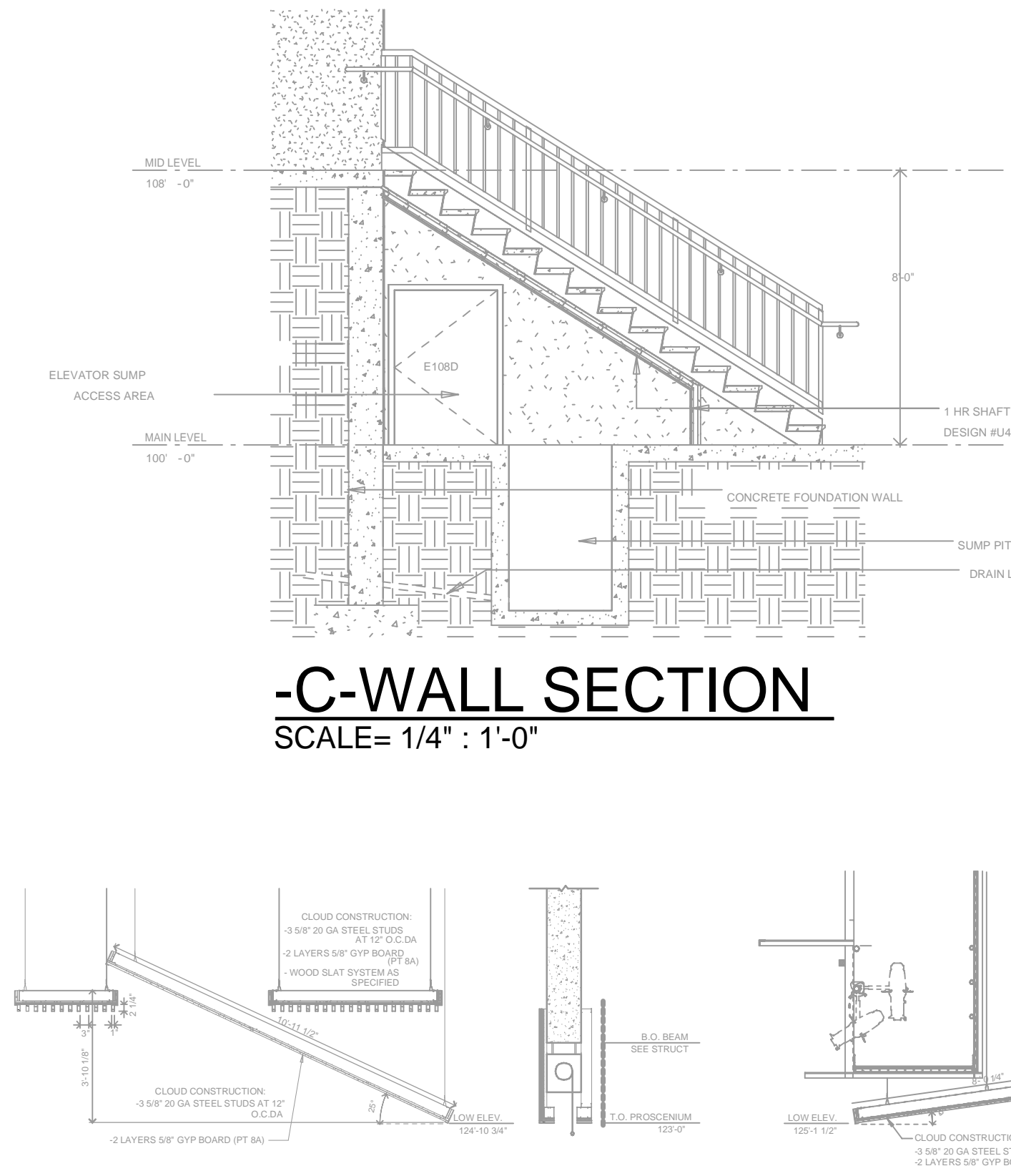
**FIRST FLOOR AREA "E" & "G"**  
SCALE = 1/8" : 1'-0"



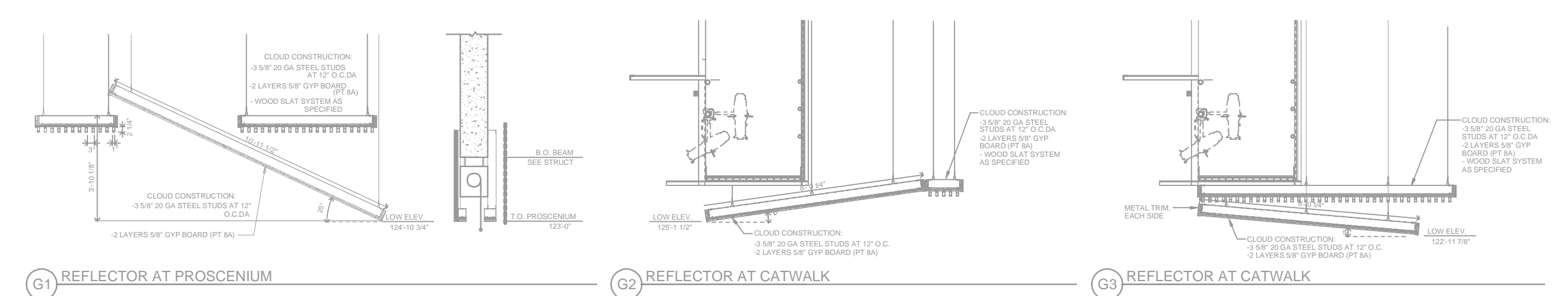
**-A-WALL SECTION**  
SCALE = 1/4" : 1'-0"



**-C-WALL SECTION**  
SCALE = 1/4" : 1'-0"



**REFLECTOR SECTIONS**

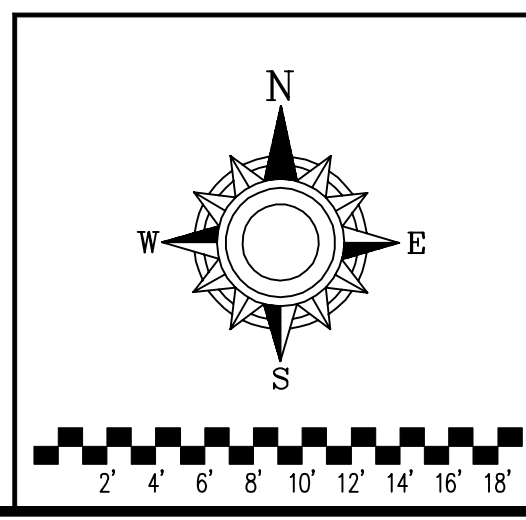
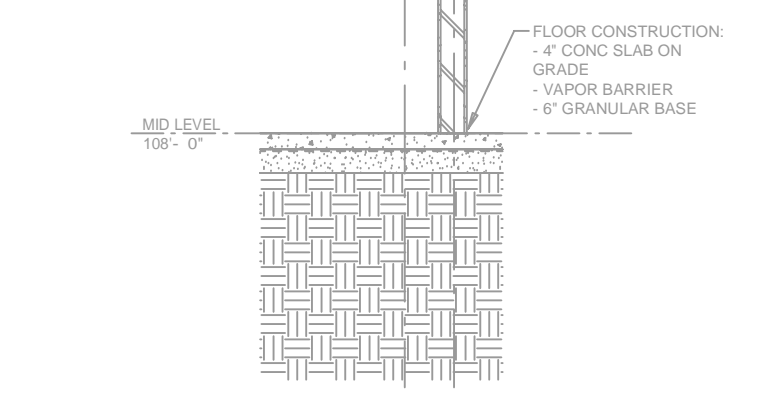


**HEAD LEGEND**

SYM	CNT	POSITION	FINISH	TEMP	R	NPT	SRN	NOF	MODEL	ESCUTCHEON	MAX SPACINGS UN CO.
1	279	UPRIGHT	BRASS	200	5.80	12"	TY313	TYCO	TY-FRB	N/A	121 S.F. (OH) / 180 S.F. (LH)
2	48	SPRIG	BRASS	200	5.80	12"	TY313	TYCO	TY-FRB	N/A	121 S.F. (OH) / 180 S.F. (LH)
3	2	UPRIGHT	BRASS	200	5.80	12"	TY3133	TYCO	TY-FRB	W SHIELD	225 S.F.
4	101	UPRIGHT	BRASS	200	8.00	3/4"	TY4131	TYCO	TY-FRB	N/A	108 S.F.
5	9	SPRIG	BRASS	200	8.00	3/4"	TY4131	TYCO	TY-FRB	N/A	108 S.F.
6	43	UPRIGHT	BRASS	200	11.20	3/4"	TY5137	TYCO	EC-11	N/A	16 X 16
7	3	DRY PENDENT	CHROME	200	5.80	1"	RS74	RELIABLE	F30R	STANDARD	130 S.F.
8	82	PENDENT	BRASS	200	5.80	12"	TY3531	TYCO	RFB	CONCEALED	99 S.F. (OH) / 148 S.F. (LH)
9	6	PENDENT	BRASS	286	5.80	12"	TY3531	TYCO	RFB	CONCEALED	130 S.F.
10	20	PENDENT	BRASS	200	5.80	12"	TY323	TYCO	TY-FRB	N/A	225 S.F.
11	93	PENDENT	BRASS	212	8.00	3/4"	RA3412	RELIABLE	GS	CONCEALED	120 S.F.
12	255	PENDENT	BRASS	185	11.20	3/4"	R7146	RELIABLE	G4-XLD	CONCEALED	16 X 16
13	27	PENDENT	BRASS	200	8.00	3/4"	TY4231	TYCO	TY-FRB	N/A	130 S.F.
14	1	SIDEWALL	BRASS	200	5.80	12"	TY3331	TYCO	TY-FRB	N/A	14 X 14
15	1	SIDEWALL	BRASS	165	5.80	12"	RA5035	RELIABLE	GS	CONCEALED	14 X 14
1413 TOTAL											

NOTE: INTERMEDIATE TEMP HEADS USED THROUGHOUT PER NFPA 13, 8.3.2.1

**-B-WALL SECTION**  
SCALE = 1/4" : 1'-0"

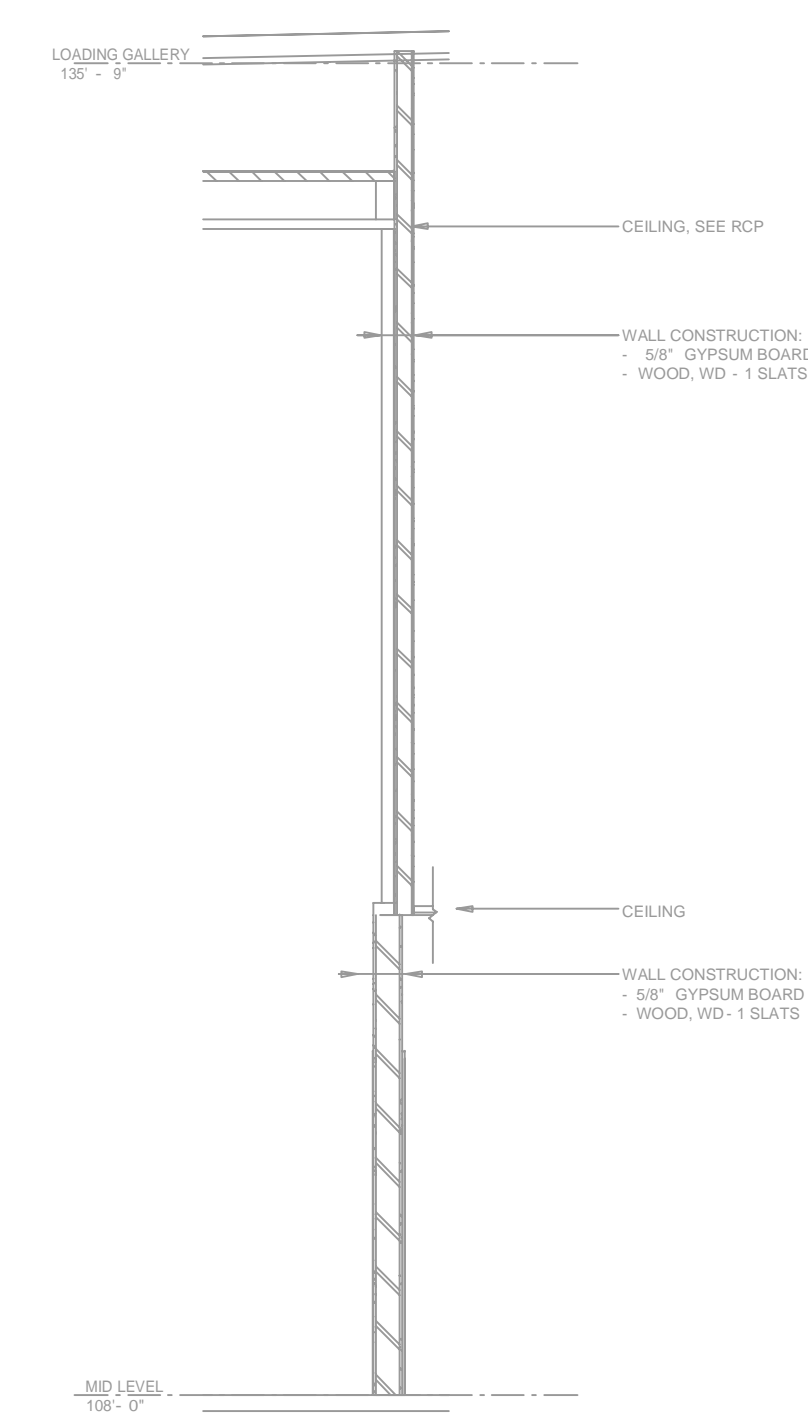


NO	REVISIONS	DATE	APPROVAL STAMPS

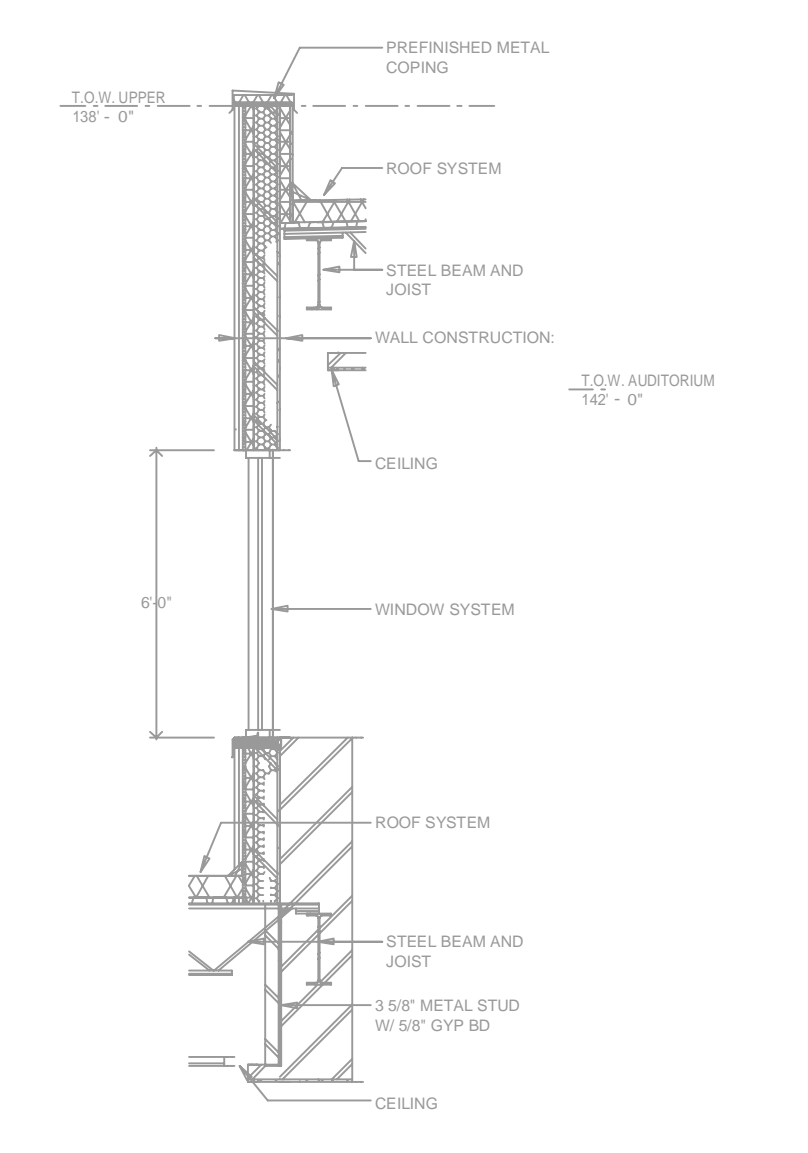
Drawing Title: FIRE PROTECTION PLAN

**MORA HIGH SCHOOL**  
200 N 9TH STREET  
MORA, MN 55051

Contract No: **C21-45**  
Drawing Date: 01/14/2022  
Scale: 1/8" = 1'-0"  
Drawn By: AMM  
Approval By: STATE FIRE MARSHAL DIV.  
SHEET NO: 6 of 13



**-A-WALL SECTION**  
SCALE= 1/4" : 1'-0"



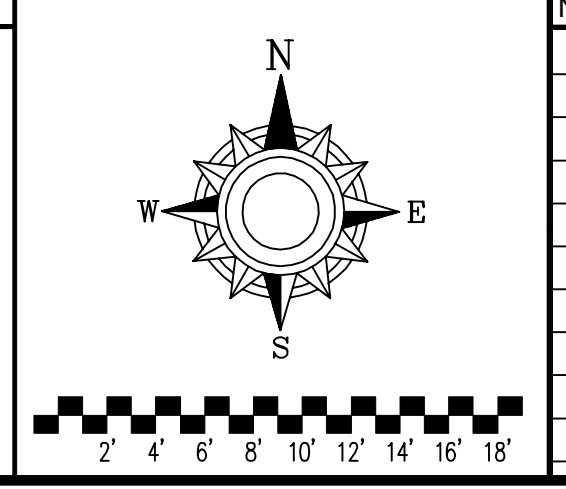
**-B-CLERESTORY SECTION**  
SCALE= 1/4" : 1'-0"

**FIRST FLOOR AREA "F"**  
SCALE= 1/8" : 1'-0"

SYM	CNT	POSITION	FINISH	TEMP	K	INPT	SIN	MFG.	MODEL#	ESCUTCHEON	MAX SPACING U.N.O.
279	UPRIGHT	BRASS	200	5.60	12"	TY313	TYCO	TY-FRB	N/A	121 S.F. (OH) / 180 S.F. (LH)	
49	SPRNG	BRASS	200	5.60	12"	TY313	TYCO	TY-FRB	N/A	121 S.F. (OH) / 180 S.F. (LH)	
2	UPRIGHT	BRASS	200	5.60	12"	TY313	TYCO	TY-FRB	W/SHIELD	225 S.F.	
101	UPRIGHT	BRASS	200	8.00	3/4"	TY4131	TYCO	TY-FRB	N/A	106 S.F.	
9	SPRNG	BRASS	200	8.00	3/4"	TY4131	TYCO	TY-FRB	N/A	106 S.F.	
43	UPRIGHT	BRASS	200	11.20	3/4"	TY5137	TYCO	EC-11	N/A	16 X 16	
3	DRY PENDENT	CHROME	200	5.60	1"	R574	RELIABLE	FSGR	STANDARD	130 S.F.	
122	PENDENT	BRASS	200	5.60	12"	TY3531	TYCO	RFI	CONCEALED	99 S.F. (OH) / 148 S.F. (LH)	
6	PENDENT	BRASS	200	5.60	12"	TY3531	TYCO	RFI	CONCEALED	130 S.F.	
20	PENDENT	BRASS	200	5.60	12"	TY323	TYCO	TY-FRB	N/A	225 S.F.	
93	PENDENT	BRASS	212	8.00	3/4"	RA3412	RELIABLE	GS	CONCEALED	120 S.F.	
255	PENDENT	BRASS	165	11.20	3/4"	R7146	RELIABLE	G4-XLO	CONCEALED	16 X 16	
27	PENDENT	BRASS	200	8.00	3/4"	TY4231	TYCO	TY-FRB	N/A	130 S.F.	
13	SIDEWALL	BRASS	200	5.60	12"	TY3331	TYCO	TY-FRB	N/A	14 X 14	
1	SIDEWALL	BRASS	165	5.60	12"	RA5036	RELIABLE	GS	CONCEALED	14 X 14	
1413	TOTAL										

NOTE: INTERMEDIATE TEMP HEADS USED THROUGHOUT PER NFPA 13, 8.3.2.1

**HEAD LEGEND**

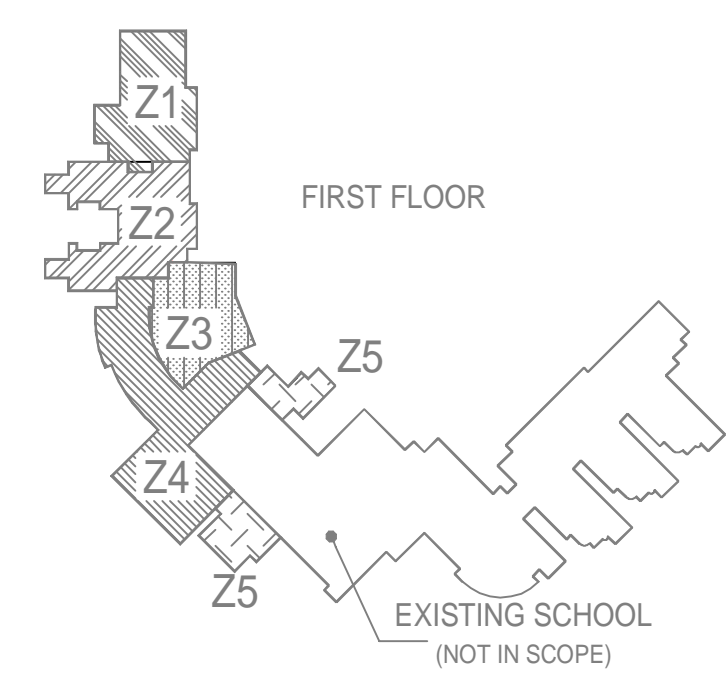
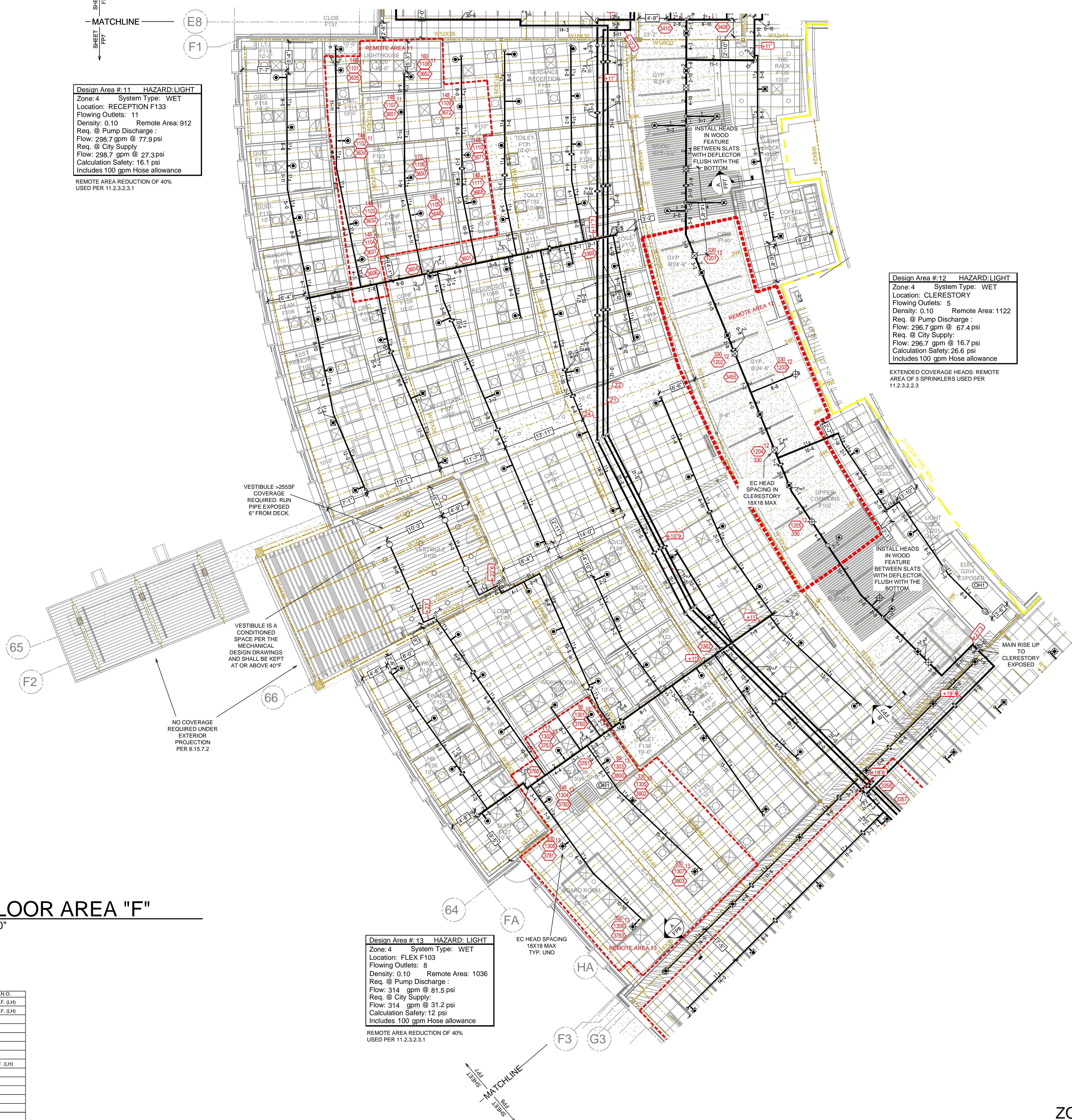


NO.	REVISIONS	DATE	APPROVAL STAMPS

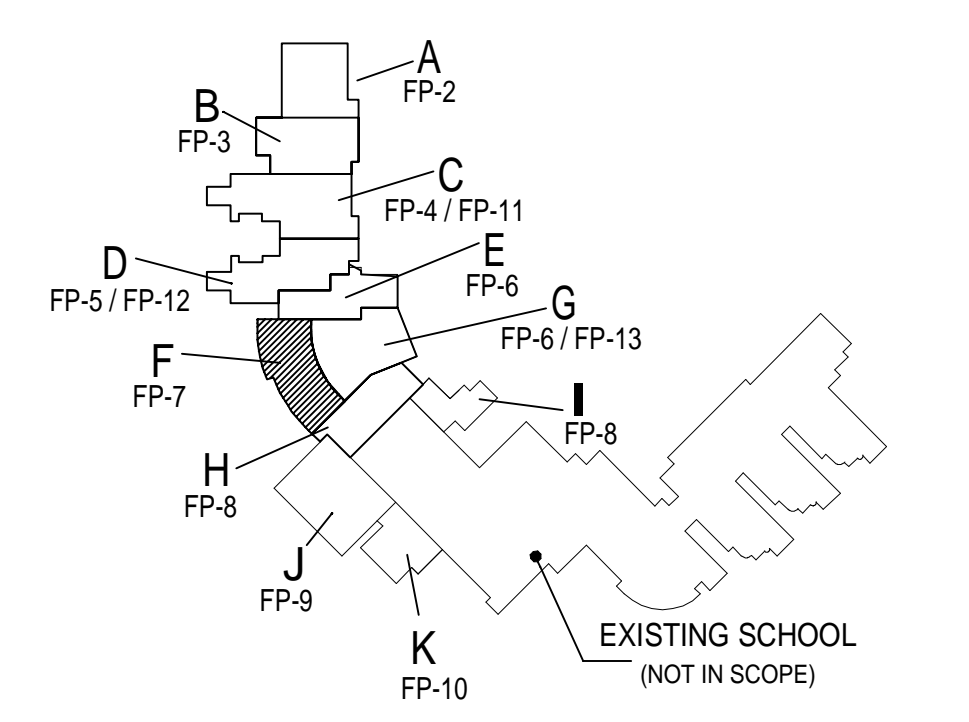
**Design Area # 11 HAZARD LIGHT**  
Zone: 4 System Type: WET  
Location: RECEPTION F133  
Flowing Outlets: 11  
Density: 0.10 Remote Area: 912  
Req. @ Pump Discharge :  
Flow: 298.7 gpm @ 77.9 psi  
Req. @ City Supply  
Flow: 298.7 gpm @ 27.3 psi  
Calculation Safety: 16.1 psi  
Includes 100 gpm Hose allowance  
REMOTE AREA REDUCTION OF 40%  
USED PER 11.2.3.2.3.1

**Design Area # 12 HAZARD LIGHT**  
Zone: 4 System Type: WET  
Location: CLERESTORY  
Flowing Outlets: 5  
Density: 0.10 Remote Area: 1122  
Req. @ Pump Discharge :  
Flow: 296.7 gpm @ 67.4 psi  
Req. @ City Supply  
Flow: 296.7 gpm @ 16.7 psi  
Calculation Safety: 26.6 psi  
Includes 100 gpm Hose allowance  
EXTENDED COVERAGE HEADS: REMOTE  
AREA OF 5 SPRINKLERS USED PER  
11.2.3.2.3

**Design Area # 13 HAZARD LIGHT**  
Zone: 4 System Type: WET  
Location: FLEX F103  
Flowing Outlets: 8  
Density: 0.10 Remote Area: 1036  
Req. @ Pump Discharge :  
Flow: 314 gpm @ 81.5 psi  
Req. @ City Supply  
Flow: 314 gpm @ 31.2 psi  
Calculation Safety: 12 psi  
Includes 100 gpm Hose allowance  
REMOTE AREA REDUCTION OF 40%  
USED PER 11.2.3.2.3.1



**ZONE MAP**  
SCALE: N.T.S.

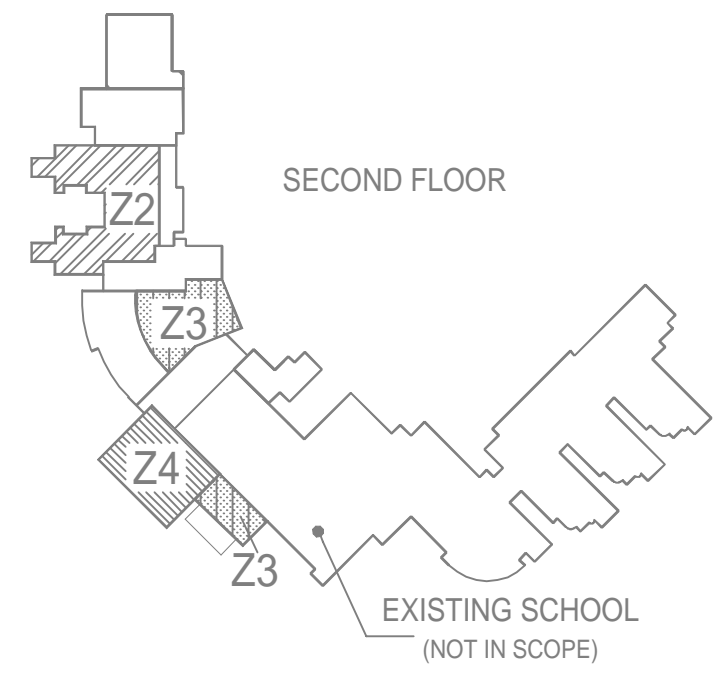


**KEY PLAN**  
SCALE: N.T.S.

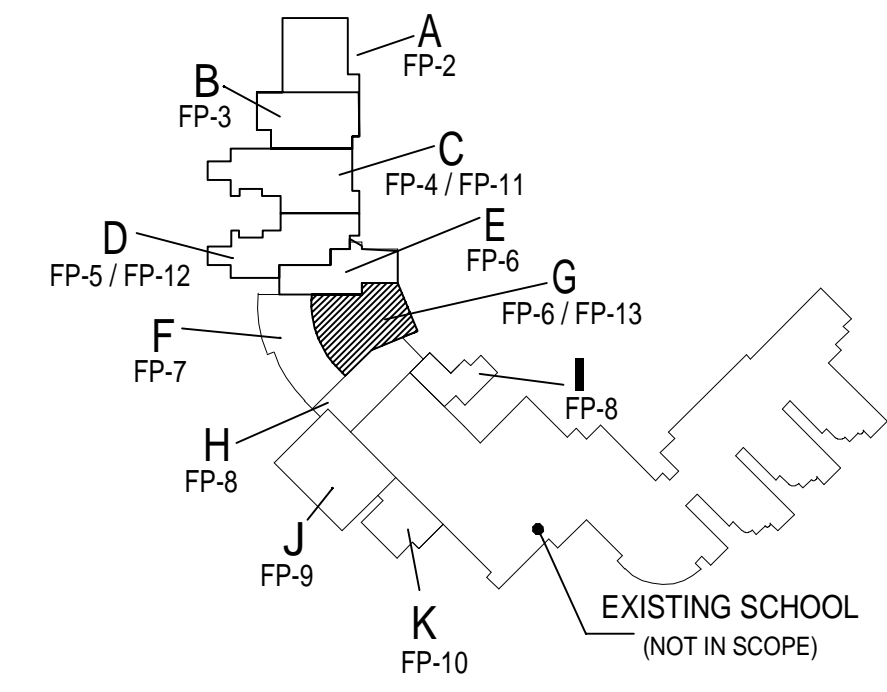
Drawing Title: FIRE PROTECTION PLAN

**MORA HIGH SCHOOL**  
200 N 9TH STREET  
MORA, MN 55051

Contract No: C21-45  
Drawing Date: 01/14/2022  
Scale: 1/8" = 1'-0"  
Drawn By: AMM  
Approval By: STATE FIRE MARSHAL DIV.  
SHEET NO: 7 of 13



**ZONE MAP**  
SCALE: N.T.S.



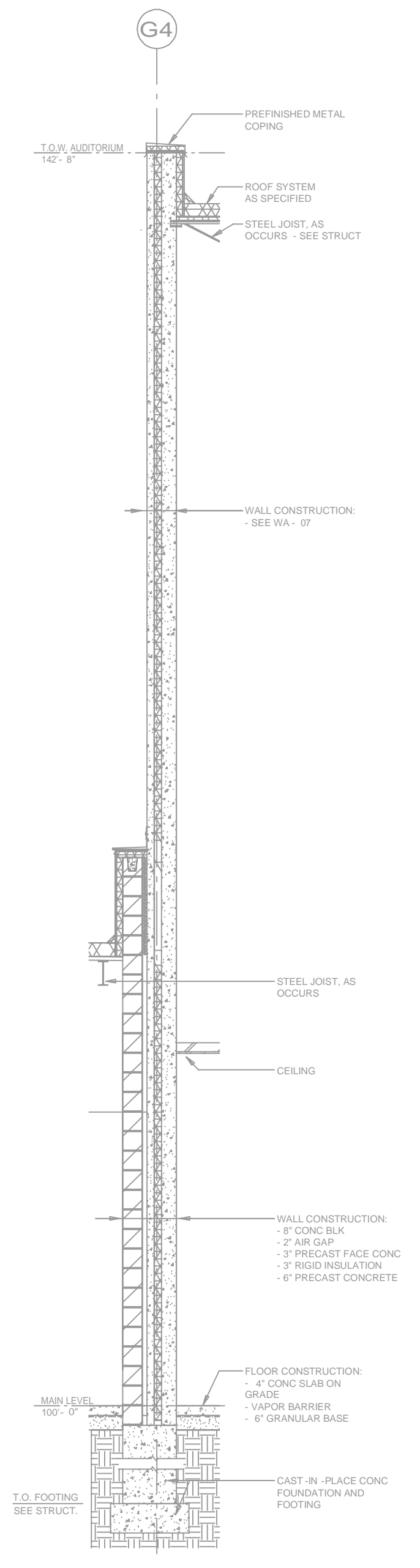
**KEY PLAN**  
SCALE: N.T.S.

**Design Area #18 HAZARD-OH-2**  
 Zone: 3 System Type: WET  
 Location: STAGE G101  
 Flowing Outlets: 15  
 Density: 0.20 Remote Area: 1668  
 Req. @ Pump Discharge:  
 Flow: 645.9 gpm @ 67.1 psi  
 Req. @ City Supply:  
 Flow: 645.9 gpm @ 29 psi  
 Calculation Safety: 12.2 psi  
 Includes 250 gpm Hose allowance  
 1500 SF DESIGN AREA. NO REDUCTION TAKEN.

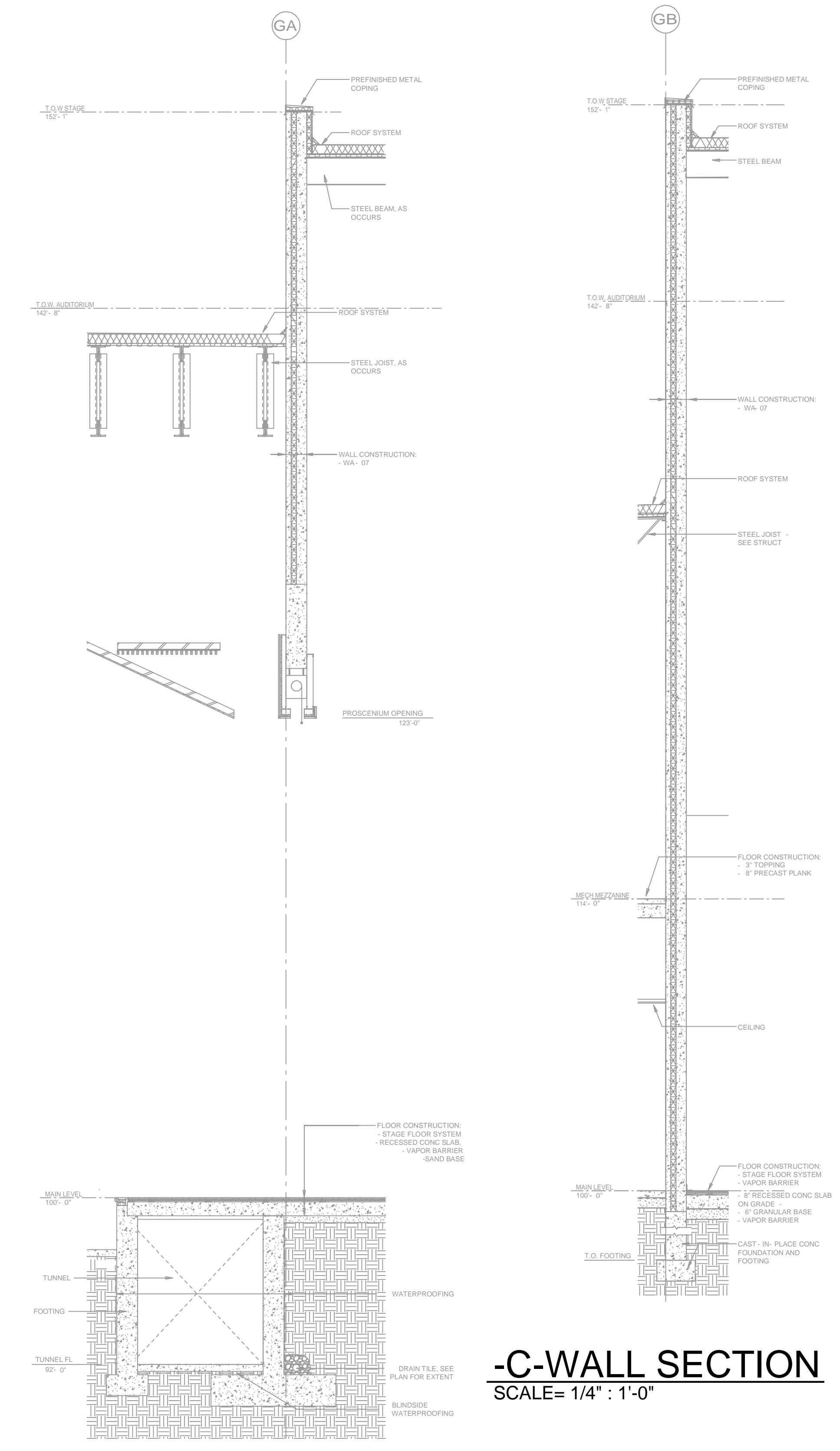
**Design Area #19 HAZARD-LIGHT**  
 Zone: 3 System Type: WET  
 Location: AUDITORIUM G100  
 Flowing Outlets: 10  
 Density: 0.10 Remote Area: 1716  
 Req. @ Pump Discharge:  
 Flow: 493.9 gpm @ 76.9 psi  
 Req. @ City Supply:  
 Flow: 493.9 gpm @ 34.7 psi  
 Calculation Safety: 7.5 psi  
 Includes 100 gpm Hose allowance  
 1500 SF DESIGN AREA. NO REDUCTION TAKEN.



**SECOND FLOOR AREA "G"**  
SCALE= 1/8" : 1'-0"



**-A-WALL SECTION**  
SCALE= 1/4" : 1'-0"



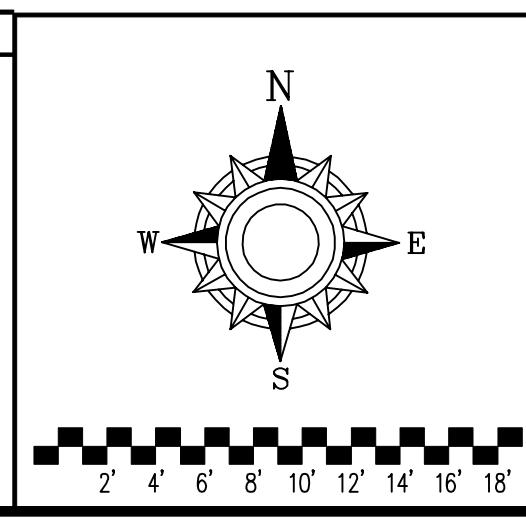
**-C-WALL SECTION**  
SCALE= 1/4" : 1'-0"

**-B-WALL SECTION**  
SCALE= 1/4" : 1'-0"

SYW	QTY	POSITION	FINISH	TEMP	K	NPFT	SN	MFG.	MODEL	ESCO/STHEOM	MAX SPACING UNDO
1	279	UPRIGHT	BRASS	200	5.60	12"	TY313	TYCO	TY-FRB	N/A	121 S.F. (OH) / 190 S.F. (LH)
2	49	SPRIG	BRASS	200	5.60	12"	TY313	TYCO	TY-FRB	N/A	121 S.F. (OH) / 190 S.F. (LH)
3	2	UPRIGHT	BRASS	200	5.60	12"	TY313	TYCO	TY-FRB	W/ SHIELD	225 S.F.
4	101	UPRIGHT	BRASS	200	8.00	34"	TY4131	TYCO	TY-FRB	N/A	106 S.F.
5	3	SPRIG	BRASS	200	8.00	34"	TY4131	TYCO	TY-FRB	N/A	106 S.F.
6	43	UPRIGHT	BRASS	200	11.20	34"	TY5137	TYCO	EC-11	N/A	16 X 16
7	3	DRY PENDENT	CHROME	200	5.60	1"	RS714	RELIABLE	FSGR	STANDARD	130 S.F.
8	522	PENDENT	BRASS	200	5.60	12"	TY3631	TYCO	RFII	CONCEALED	99 S.F. (OH) / 148 S.F. (LH)
9	6	PENDENT	BRASS	288	5.60	12"	TY3631	TYCO	RFII	CONCEALED	130 S.F.
10	20	PENDENT	BRASS	200	5.60	12"	TY323	TYCO	TY-FRB	N/A	225 S.F.
11	19	PENDENT	BRASS	212	8.00	34"	RA3419	RELIABLE	OS	CONCEALED	120 S.F.
12	255	PENDENT	BRASS	165	11.20	34"	R7146	RELIABLE	Q4-XL0	CONCEALED	16 X 16
13	27	PENDENT	BRASS	200	8.00	34"	TY4231	TYCO	TY-FRB	N/A	130 S.F.
14	3	SIDEWALL	BRASS	200	5.60	12"	TY3331	TYCO	TY-FRB	N/A	14 X 14
15	1	SIDEWALL	BRASS	165	5.60	12"	RA5035	RELIABLE	OS	CONCEALED	14 X 14
1413 TOTAL											

NOTE: INTERMEDIATE TEMP HEADS USED THROUGHOUT PER NFPA 13, 8.3.2.1

**HEAD LEGEND**



NO.	REVISIONS	DATE	APPROVAL STAMPS

Drawing Title: FIRE PROTECTION PLAN

**MORA HIGH SCHOOL**  
200 N 9TH STREET  
MORA, MN 55051

Contract No: **C21-45**  
 Drawing Date: 01/14/2022  
 Scale: 1/8" = 1'-0"  
 Drawn By: AMM  
 Approval By: STATE FIRE MARSHAL DIV.  
 SHEET NO: 13 of 13