

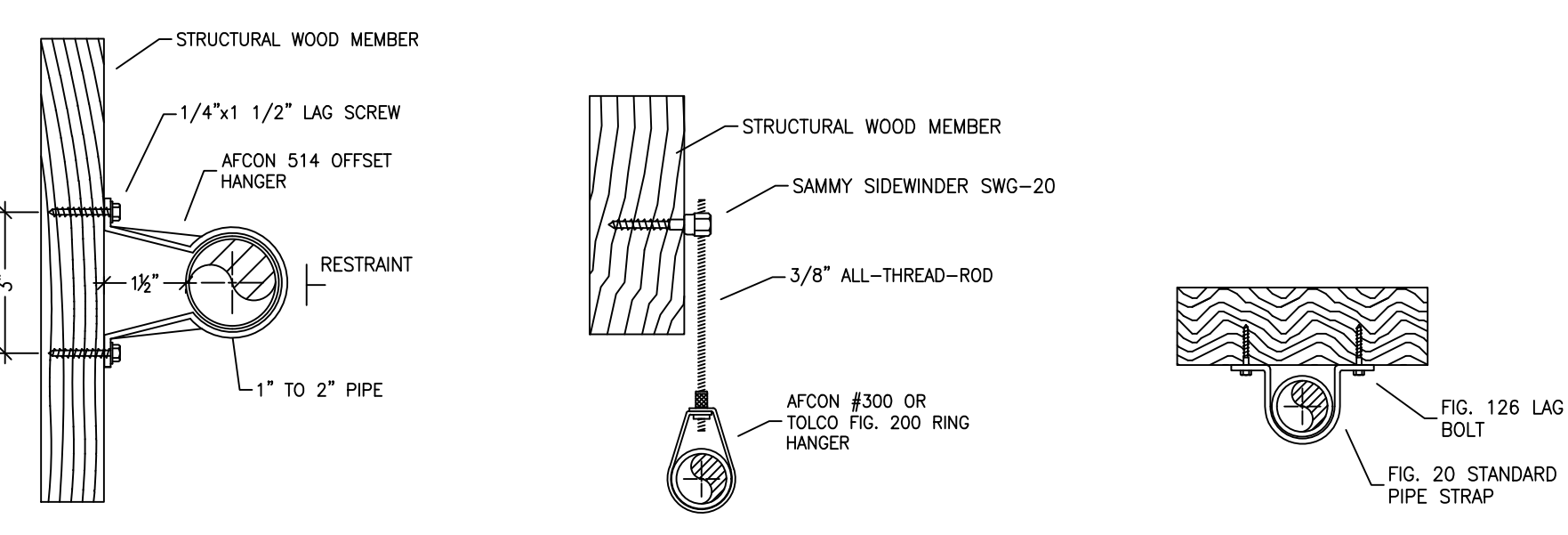
LOWER LEVEL FIRE SPRINKLER PLAN
SCALE: 1/8" = 1'-0"

PIPE VOLUMES: ZONE 1 (UPPER LEVEL)
TOTAL PIPE FOOTAGE AND CAPACITY:

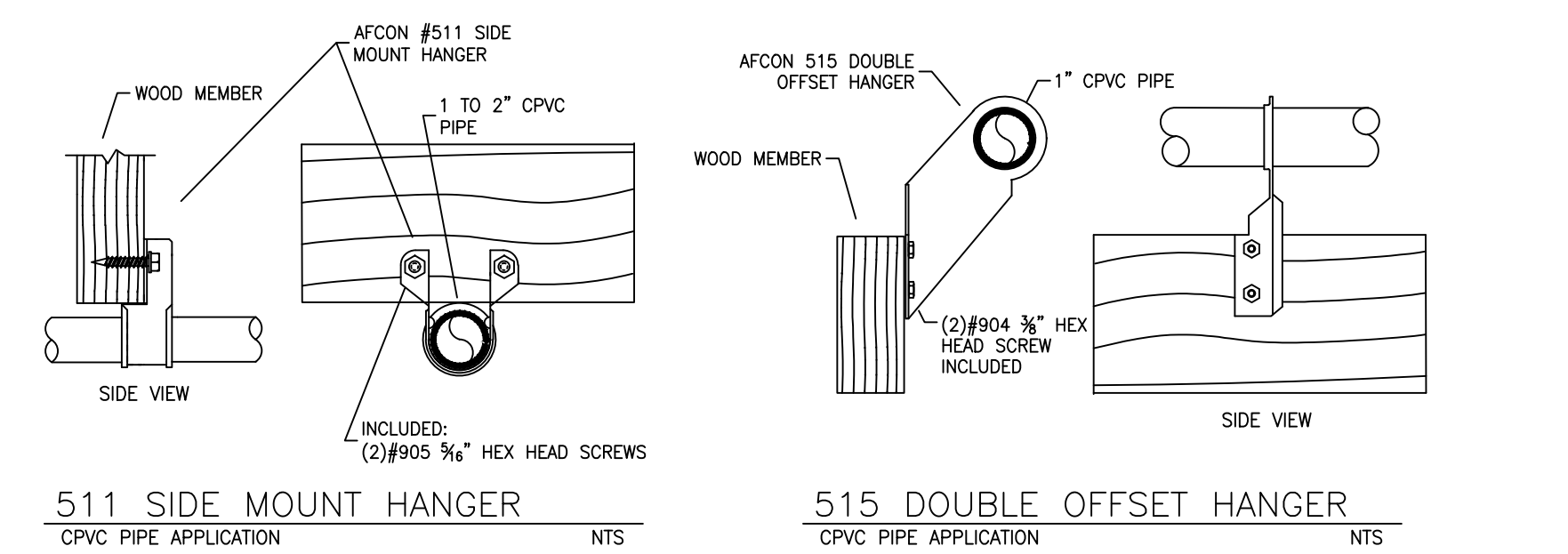
CPVC		
1" = 160'	(7.91 GAL)	
1-1/4" = 3'	(0.24 GAL)	
1-1/2" = 23'	(2.40 GAL)	
STEEL		
1" = 2'	(0.09 GAL)	
1-1/2" = 9'	(0.95 GAL)	
TOTAL VOLUME:	±11.59 GALLONS	

PIPE VOLUMES: ZONE 2 (LOWER & MAIN LEVEL)
TOTAL PIPE FOOTAGE AND CAPACITY:

CPVC		
1" = 373'	(18.45 GAL)	
1-1/4" = 188'	(14.90 GAL)	
1-1/2" = 25'	(2.60 GAL)	
STEEL		
1" = 2'	(0.09 GAL)	
1-1/2" = 9'	(0.95 GAL)	
TOTAL VOLUME:	±37.00 GALLONS	



514 OFFSET HANGER STEEL PIPE APPLICATION NTS
SWG-20 HANGER DETAIL FOR HORIZONTAL ATTACHMENT TO WOOD NTS
STANDARD PIPE STRAP NTS



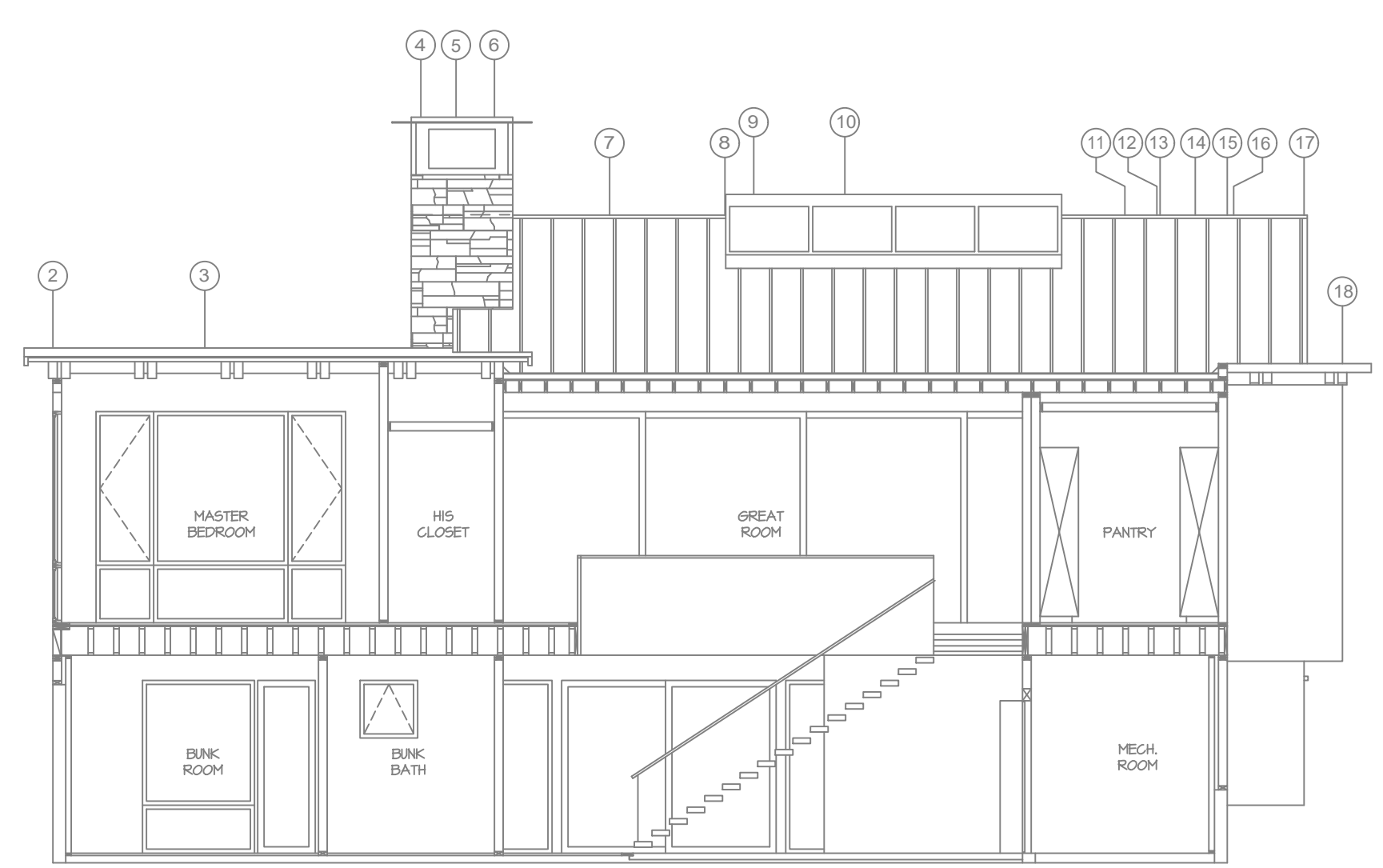
511 SIDE MOUNT HANGER CPVC PIPE APPLICATION NTS
515 DOUBLE OFFSET HANGER CPVC PIPE APPLICATION NTS

HANGER DETAILS

REMOTE AREA 2
Hydraulically Calculated System

This system as shown on Fire Protection Plan company print no. FP1 dated 3/8/2023 for 460 GONOWABIE at MEDIA ROOM contract no. [REDACTED] is designed to discharge at a rate of 0.05 gpm (L/min) per sq ft (m²) of floor area over a maximum area of [REDACTED] sq ft (m²) when supplied with water at the rate of 102.5 gpm (L/min) at 94.2 psi (bars) at the base of the riser. Hose stream allowance of 30 gpm (L/min) is included in the above.

Occupancy classification: 13R LIGHT HAZARD
Commodity classification: NA
Maximum storage height: NA
Safety factor: 15.4



1 BUILDING SECTION A
SCALE: 1/8" = 1'-0"

SUBMITTAL

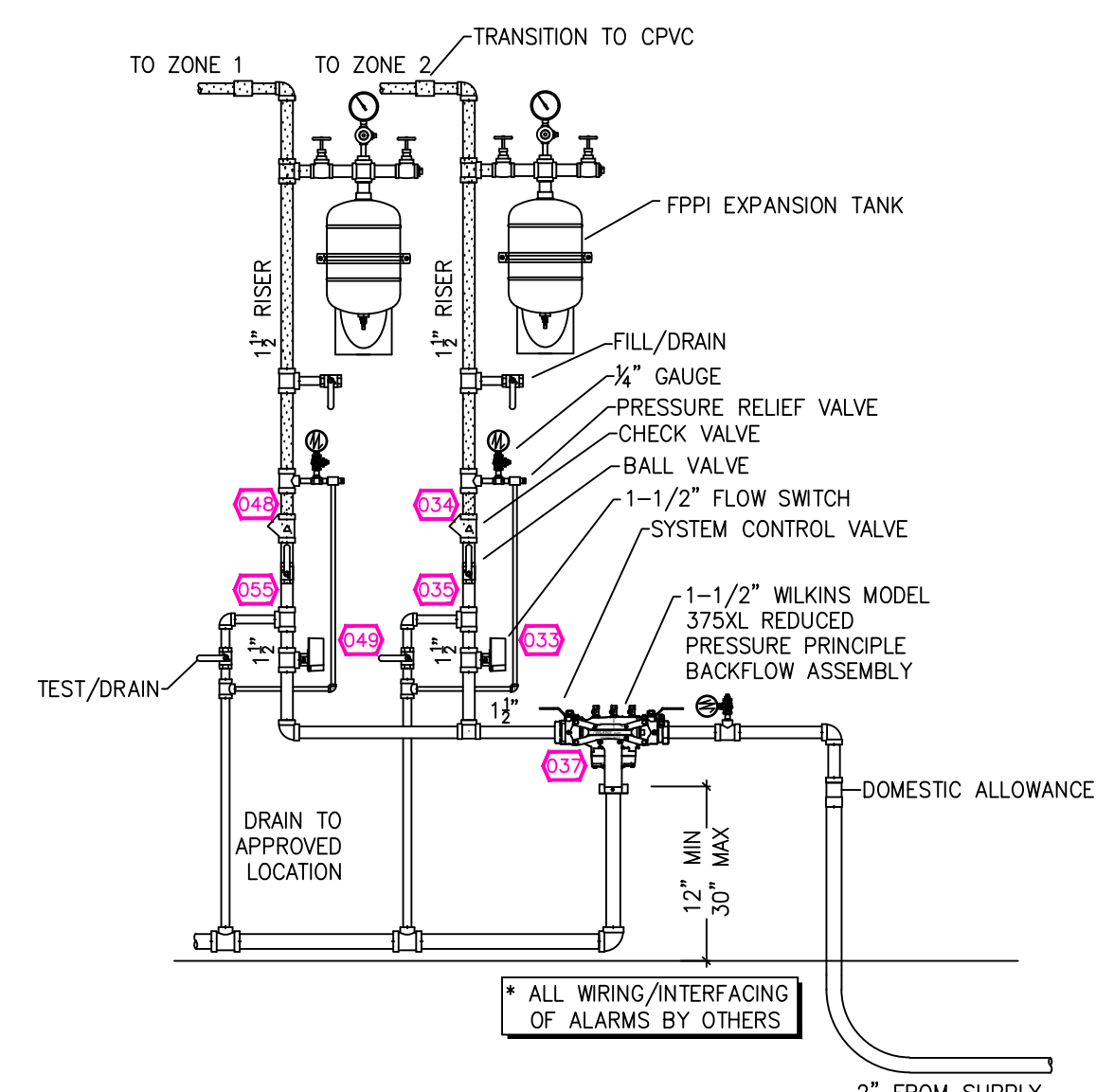
NO SPRINKLERS REQUIRED IN:
BATHROOMS 55 SQ.FT. OR LESS IN AREA PER NFPA 13R SECTION 6.6.2
CLOSETS 24 SQ.FT. OR LESS IN AREA PER NFPA 13R SECTION 6.6.3

PROJECT SQUARE FOOTAGES

LOWER LEVEL ZONE 2	= 2031 S.F.
MAIN LEVEL ZONE 2	= 3242 S.F.
UPPER LEVEL ZONE 1	= 1081 S.F.

SPRINKLER HEAT ZONES:

HEAT SOURCE:	ORDINARY TEMP. SPRINKLER	INTERMEDIATE TEMP. SPRINKLER
SIDE OF OPEN OR RECESSED FIRE PLACE	36"	12"
FRONT OF RECESSED FIRE PLACE	60"	36"
COAL OR WOOD BURNING STOVE	42"	12"
RANGE/OVEN, HOT AIR FLUES & UNINSULATED HEAT DUCT	18"	9"
UNINSULATED HOT WATER PIPES & 250-499 WATT LIGHTS	12"	6"
SIDE OF CEILING OR WALL MOUNTED HOT AIR DIFFUSERS	24"	12"
FRONT OF WALL MOUNTED HOT AIR DIFFUSERS	36"	18"
HOT WATER HEATER, FURNACE, LIGHT FIXTURE 0-250 WATT	6"	3"



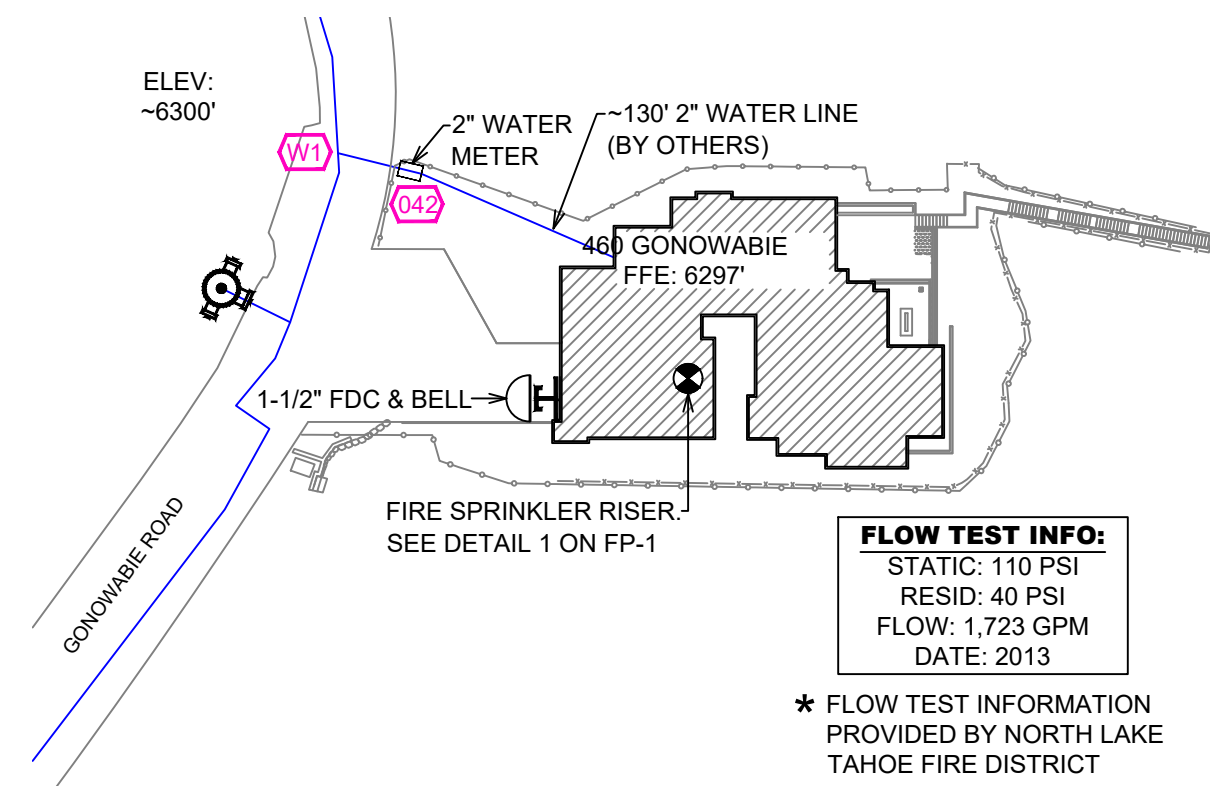
1 RISER DETAIL
SCALE: 1/2" = 1'-0"

NFPA 13 - Table 9.2.2.1(a) Maximum Distance Between Hangers (ft-in.)

Pipe	Nominal Pipe Size (in.)										
	1/2"	3/4"	1"	1 1/4"	1 1/2"	2"	2 1/2"	3"	4"	6"	8"
Steel Pipe except threaded	N/A	12-0	12-0	15-0	15-0	15-0	15-0	15-0	15-0	15-0	15-0
Threaded lightwall steel	N/A	12-0	12-0	15-0	15-0	15-0	N/A	N/A	N/A	N/A	N/A
Copper tube	8-0	8-0	10-0	10-0	12-0	12-0	15-0	15-0	15-0	15-0	15-0
CPVC	5-6	6-0	6-6	7-0	8-0	9-0	10-0	N/A	N/A	N/A	N/A

NFPA 13 - Table A.7.2.3 Capacity of 1 ft of pipe (Based on Actual Internal Pipe Diameter)

Nominal Pipe Diameter (in.)	Pipe Capacity (gallons)		
	Schedule 40	Schedule 10	CPVC
1	0.045	0.049	0.049
1 1/4	0.078	0.085	0.079
1 1/2	0.106	0.115	0.104
2	0.174	0.190	0.174
2 1/2	0.248	0.283	0.248



SITE PLAN
SCALE: 1" = 50'-0"

NO.	DATE	REVISIONS	DRAWN	CHECKED

GENERAL CONTRACTOR: AUTHORITY HAVING JURISDICTION:
ADDRESS: 886 ORIOLE WAY
CITY: INCLINE VILLAGE, NV
PHONE: 775-831-0351
CONTACT: CONTACT:

ARCHITECT: FIELD INSPECTIONS:
ADDRESS: 1.
CITY: 2.
PHONE: 3.
4.

- FIRE SPRINKLER NOTES:**
- THE PROPOSED FIRE SPRINKLER SYSTEM IS AN ANTI-FREEZE SYSTEM AND SHALL BE DESIGNED AND INSTALLED IN ACCORDANCE WITH NFPA 13R AND THE AUTHORITY HAVING JURISDICTION.
 - THIS SPRINKLER SYSTEM IS HYDRAULICALLY CALCULATED IN ACCORDANCE WITH NFPA 13R TO PROVIDE 0.05 GPM PER SQ. FT. OVER THE MOST REMOTE AREA.
 - THE NUMBER OF DESIGN SPRINKLERS SHALL INCLUDE ALL SPRINKLERS WITHIN A COMPARTMENT UP TO A MAXIMUM OF 4 SPRINKLERS.
 - ALL SPRINKLER PIPING CONCEALED ABOVE CEILINGS SHALL BE CPVC PIPING UNLESS OTHERWISE NOTED.
 - ALL DIMENSIONS SHOWN ARE CENTER TO CENTER U.O.N.
 - ALL HANGERS SHALL BE INSTALLED IN ACCORDANCE WITH NFPA 13R AND/OR NFPA 13 REQUIREMENTS.
 - HOLES THROUGH SOLID STRUCTURAL MEMBERS SHALL BE PERMITTED TO SERVE AS HANGERS FOR THE SUPPORT OF SYSTEM PIPING.
 - ALL SYSTEM PIPING SHALL BE TESTED FOR LEAKAGE AT NORMAL SYSTEM OPERATING PRESSURE.
 - THE OWNER SHALL BE RESPONSIBLE FOR MAINTAINING A MINIMUM TEMPERATURE OF 40° FAHRENHEIT TO PROTECT FROM FREEZING, THE SECTIONS OF THE SPRINKLER SYSTEM WHERE THERE IS NO ANTI-FREEZE IN THE PIPING (UPSTREAM OF THE RISER).

SPRINKLER HEAD LEGEND

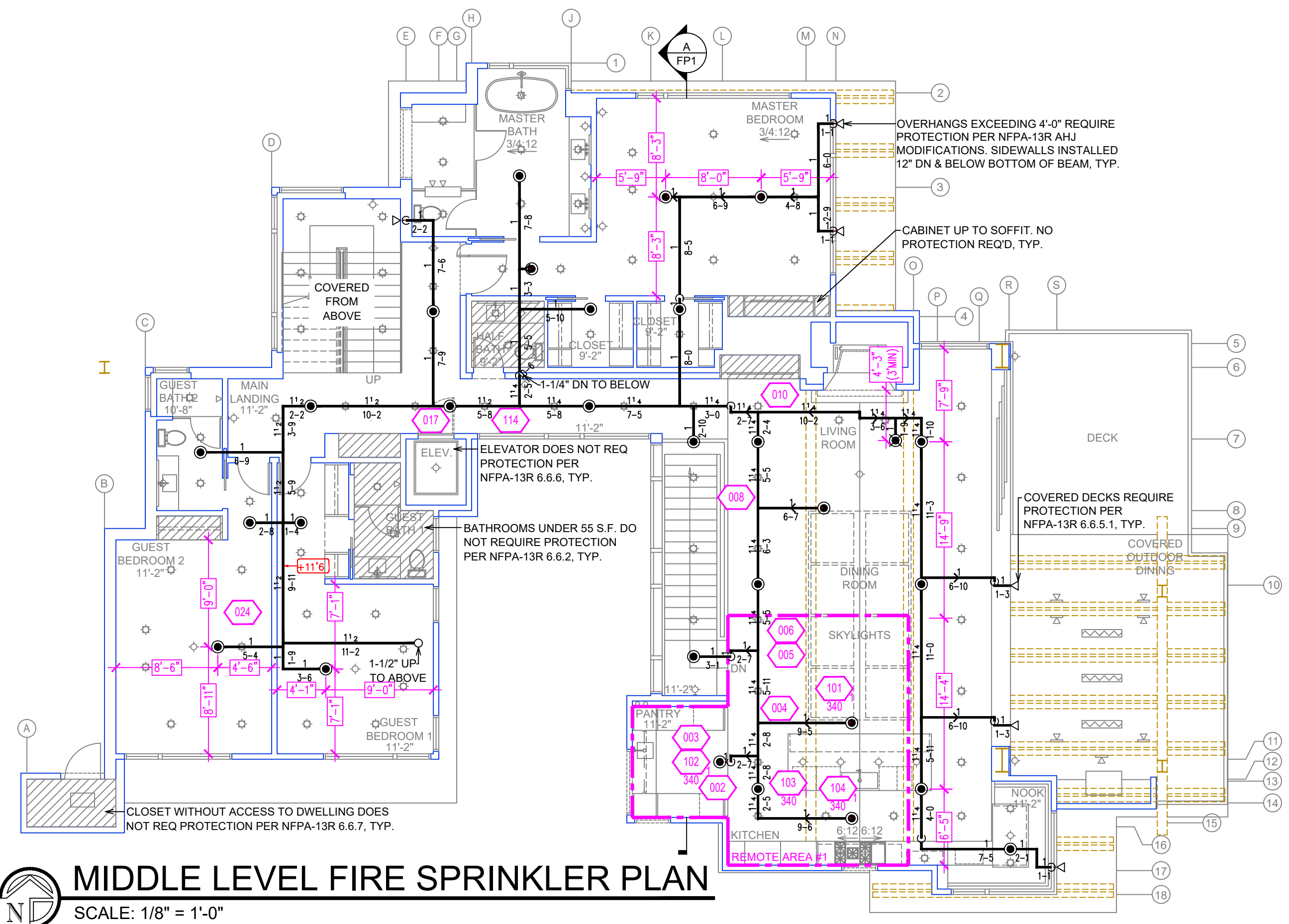
SYM	QTY	TYPE	WFS.	MODEL	NPT	K	TEMP	FINISH	SUN.
⊙	42	CONCEALED	SENJ	RC-RES	1/2"	4.9	152	WHITE	SS8464
⊙	4	SEM-RECESS	SENJ	FR-RES	1/2"	4.9	205	WHITE	SS4451
⊙	4	CONCEALED	SENJ	RC-RES	1/2"	4.9	205	WHITE	SS8464
⊙	23	SEM-RECESS	TYCO	LF-8	1/2"	4.4	175	CHROME	TY2334

- 73 TOTAL SPRINKLERS**
- FIRE SPRINKLER SYMBOLS**
- ⊙ AUTOMATIC SPRINKLER RISER +13" ELEV. BELOW DECK OR TOS.
 - ⊕ EARTHQUAKE BRACING +12'-9" ELEV. ABOVE FINISHED FLOOR
 - 2-WAY & 4-WAY → CHANGE ELEVATION UP
 - PIPE HANGER & TYPE DESIGNATION → CHANGE ELEVATION DN
 - HYDRAULIC REF PT → INSPECTORS TEST
 - GRID OR THRD CAP → AUX DRAIN
 - GRID COUPLING → REVISION NOTATION
 - ⊕ TYPICAL POINT OF CONNECTION (POC) → LOCAL ALARM

PROJECT NAME: FIRE SPRINKLER PLANS FOR
460 GONOWABIE
460 GONOWABIE RD.
CRYSTAL BAY, NEVADA 89402

DRAWING TITLE: FIRE SPRINKLER PLAN

SCALE: 1/8" = 1'-0"	JOB NO.:
DRAWN	DWG NO.:
BORN ON DATE: 3/16/2023	FP-1
FILE:	SHEET 1 OF 2



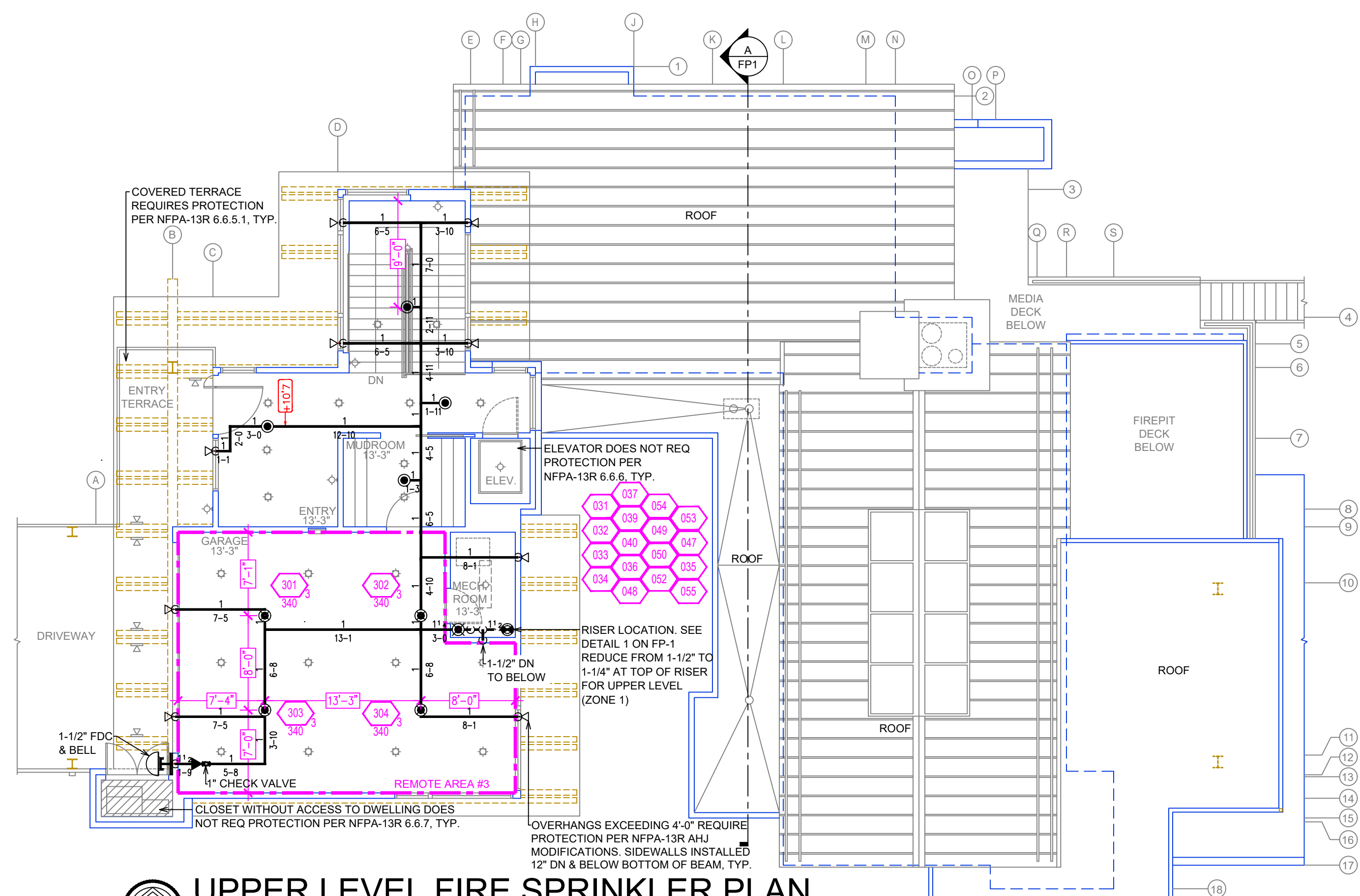
MIDDLE LEVEL FIRE SPRINKLER PLAN
SCALE: 1/8" = 1'-0"

REMOTE AREA 1

Hydraulically Calculated System

This system as shown on Fire Protection Plan
company print no. FFP1 dated 3/8/2023
for 460 GONOWABIE
at KITCHEN/DINING contract no. _____
is designed to discharge at a rate of 0.05 gpm
(L/min) per sq ft (m²) of floor area over a maximum area of
NFPA 13R - 4 SPRINKLERS sq ft (m²) when supplied
with water at the rate of 102.4 gpm (L/min)
at 98.9 psi (bars) at the base of the riser.
Hose stream allowance of 30 gpm (L/min)
is included in the above.

Occupancy classification 13R LIGHT HAZARD
Commodity classification N/A
Maximum storage height N/A
Safety factor 10.7



UPPER LEVEL FIRE SPRINKLER PLAN
SCALE: 1/8" = 1'-0"

REMOTE AREA 3

Hydraulically Calculated System

This system as shown on Fire Protection Plan
company print no. FFP1 dated 3/8/2023
for 460 GONOWABIE
at GARAGE contract no. _____
is designed to discharge at a rate of 0.05 gpm
(L/min) per sq ft (m²) of floor area over a maximum area of
NFPA 13R - 4 SPRINKLERS sq ft (m²) when supplied
with water at the rate of 101.5 gpm (L/min)
at 74.0 psi (bars) at the base of the riser.
Hose stream allowance of 30 gpm (L/min)
is included in the above.

Occupancy classification 13R LIGHT HAZARD
Commodity classification N/A
Maximum storage height N/A
Safety factor 35.6

NO.	DATE	REVISIONS	DRAWN	CHECKED

GENERAL CONTRACTOR: AUTHORITY HAVING JURISDICTION:
NORTH LAKE TAHOE FIRE DISTRICT
ADDRESS: 886 ORIOLE WAY
CITY: INCLINE VILLAGE, NV
PHONE: 775-831-0351
CONTACT: CONTACT:

ARCHITECT: FIELD INSPECTIONS:
1.
2.
3.
4.

- FIRE SPRINKLER NOTES:**
- THE PROPOSED FIRE SPRINKLER SYSTEM IS AN ANTI-FREEZE SYSTEM AND SHALL BE DESIGNED AND INSTALLED IN ACCORDANCE WITH NFPA 13R AND THE AUTHORITY HAVING JURISDICTION.
 - THIS SPRINKLER SYSTEM IS HYDRAULICALLY CALCULATED IN ACCORDANCE WITH NFPA 13R TO PROVIDE 0.05 GPM PER SQ. FT. OVER THE MOST REMOTE AREA.
 - THE NUMBER OF DESIGN SPRINKLERS SHALL INCLUDE ALL SPRINKLERS WITHIN A COMPARTMENT UP TO A MAXIMUM OF 4 SPRINKLERS.
 - ALL SPRINKLER PIPING CONCEALED ABOVE CEILINGS SHALL BE CPVC PIPING UNLESS OTHERWISE NOTED.
 - ALL DIMENSIONS SHOWN ARE CENTER TO CENTER U.O.N.
 - ALL HANGERS SHALL BE INSTALLED IN ACCORDANCE WITH NFPA 13R AND/OR NFPA 13 REQUIREMENTS.
 - HOLES THROUGH SOLID STRUCTURAL MEMBERS SHALL BE PERMITTED TO SERVE AS HANGERS FOR THE SUPPORT OF SYSTEM PIPING.
 - ALL SYSTEM PIPING SHALL BE TESTED FOR LEAKAGE AT NORMAL SYSTEM OPERATING PRESSURE.
 - THE OWNER SHALL BE RESPONSIBLE FOR MAINTAINING A MINIMUM TEMPERATURE OF 40° FAHRENHEIT TO PROTECT FROM FREEZING, THE SECTIONS OF THE SPRINKLER SYSTEM WHERE THERE IS NO ANTI-FREEZE IN THE PIPING (UPSTREAM OF THE RISER).

SPRINKLER HEAD LEGEND

SYM	QTY	TYPE	WFS	MODEL	NPT	K	TEMP	FINISH	SJ/N
⊗	42	CONCEALED	SENJ	RC-RES	1/2"	4.9	152	WHITE	SS8464
⊙	4	SEMI-RECESS	SENJ	FR-RES	1/2"	4.9	205	WHITE	SS4451
⊗	4	CONCEALED	SENJ	RC-RES	1/2"	4.9	205	WHITE	SS8464
⊙	23	SEMI-RECESS	TYCO	LF-II	1/2"	4.4	175	CHROME	TY2334

- 73 TOTAL SPRINKLERS**
- FIRE SPRINKLER SYMBOLS**
- ⊗ AUTOMATIC SPRINKLER RISER +13" ELEV. BELOW DECK OR TOS
 - ⊕ EARTHQUAKE BRACING +12'-9" ELEV. ABOVE FINISHED FLOOR
 - ↕ 2-WAY & 4-WAY → CHANGE ELEVATION UP
 - ↔ PIPE HANGER & TYPE DESIGNATION → CHANGE ELEVATION DN
 - ⊕ HYDRAULIC REF PT → INSPECTORS TEST
 - ⊕ GRID OR THRD CAP → AUX DRAIN
 - ⊕ GRID COUPLING → REVISION NOTATION
 - ⊕ TYPICAL POINT OF CONNECTION (POC) → LOCAL ALARM

PROJECT NAME: FIRE SPRINKLER PLANS FOR
460 GONOWABIE
460 GONOWABIE RD.
CRYSTAL BAY, NEVADA 89402

DRAWING TITLE:
FIRE SPRINKLER PLAN

SCALE: 1/8" = 1'-0" JOB NO.:
DRAWN BY: DWG NO.:
BORN ON DATE: 3/16/2023 FILE: **FP-2**
SHEET 2 OF 2