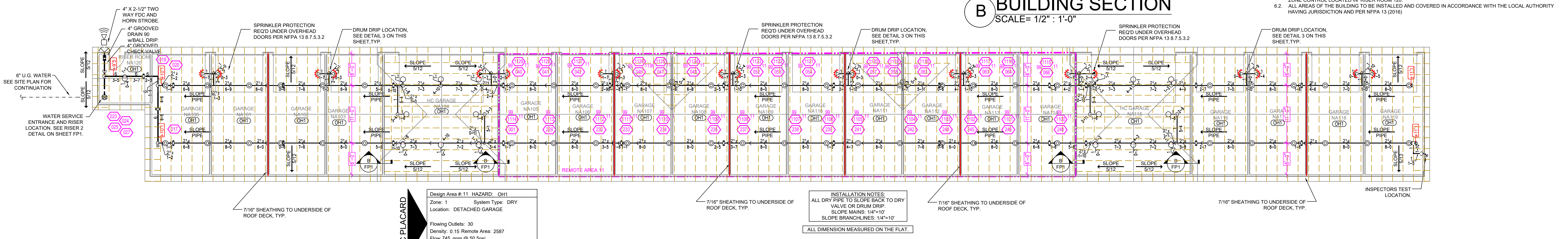


HANGER DETAILS

A BUILDING SECTION
SCALE= 1/8" : 1'-0"

B BUILDING SECTION
SCALE= 1/2" : 1'-0"

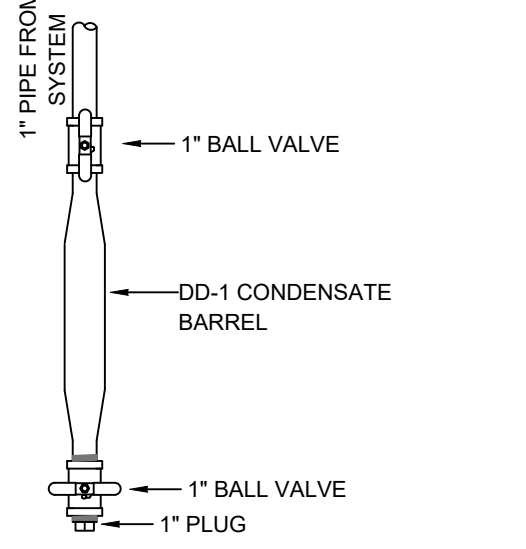


DETACHED GARAGE FIRE SPRINKLER PLAN
SCALE= 1/8" : 1'-0"

SYM/CONT	POSITION	FINISH	TEMP	K	NPT	SIN	MFG	MODEL#	DESCRIPTION	MAX SPACING
888	PENDENT	WHITE	155	4.90	1/2"	TY2326	TYCO	LFI	SEMI-RECESSED	18 X 18 U.N.O.
44	PENDENT	WHITE	155	8.00	3/4"	TY4282	TYCO	EC-8C	SEMI-RECESSED	28 X 10
6	SIDEWALL	WHITE	155	8.00	3/4"	TY4332	TYCO	TY-FRB	SEMI-RECESSED	16 X 20
146	PENDENT	WHITE	200	5.60	1/2"	TY323	TYCO	TY-FRB	SEMI-RECESSED	LH = 15 X 15, OH = 130 S.F.
216	SIDEWALL	WHITE	155	4.40	1/2"	TY2334	TYCO	LFI	SEMI-RECESSED	16 X 16
58	SIDEWALL	WHITE	200	5.60	1/2"	TY331	TYCO	TY-FRB	SEMI-RECESSED	LH = 14X14, OH = 100 S.F.
8	PENDENT	WHITE	155	11.20	3/4"	TY327	TYCO	EC-11	SEMI-RECESSED	18 X 18
52	UPRIGHT	BRASS	286	11.20	3/4"	TY5137	TYCO	EC-11	N/A	18 X 18
17	UPRIGHT	BRASS	200	5.60	1/2"	TY3151	TYCO	TY-B	N/A	130 S.F.
15	SIDEWALL	WHITE	155	4.00	1/2"	VK486	VIKING	VK486	SEMI-RECESSED	16 X 18 U.N.O.
6	UPRIGHT	BRASS	212	5.60	1/2"	RA5626	RELIABLE	AH56	N/A	10X15
19	SPRGD UPR	BRASS	212	8.00	3/4"	RA5622	RELIABLE	DD56-6	N/A	6 X 63
16	SPRGD UPR	BRASS	212	5.60	1/2"	RA5624	RELIABLE	DD56-27	N/A	6 X 40
112	UPRIGHT	BRASS	286	5.60	1/2"	TY3151	TYCO	TY-B	N/A	130 S.F.
3	SPRGD UPR	BRASS	200	8.00	3/4"	TY4182	TYCO	BB3	N/A	6 X 80
58	UPRIGHT	BRASS	200	5.60	1/2"	TY313	TYCO	TY-FRB	N/A	ATTIC = 120 S.F., LH = 15X15
56	SPRGD UPR	BRASS	200	5.60	1/2"	TY3151	TYCO	TY-B	N/A	130 S.F.
20	SIDEWALL	BRASS	200	5.60	1/2"	TY331	TYCO	TY-FRB	N/A	14X14
12	SIDEWALL	BRASS	200	11.20	3/4"	TY332	TYCO	ELOSW20	N/A	16 X 16
1282 TOTAL SPRINKLERS										

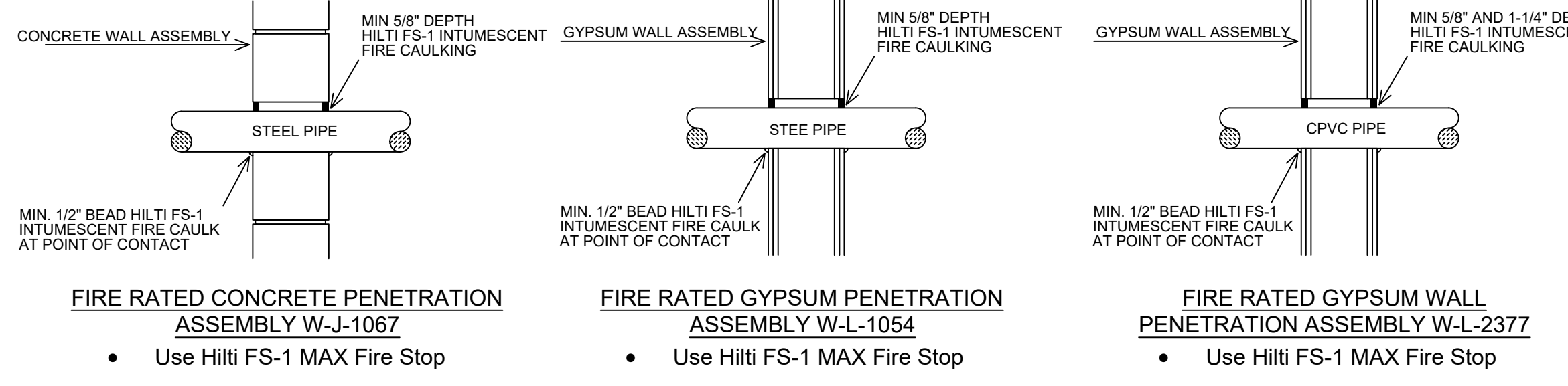
SPRINKLER HEAD LEGEND

3 DRUM DRIP ASSEMBLY
SCALE= 1/8" : 1'-0"



PIPE LEGEND

- BLACK STEEL SPRINKLER PIPING
- CPVC BLAZEMASTER SPRINKLER PIPING

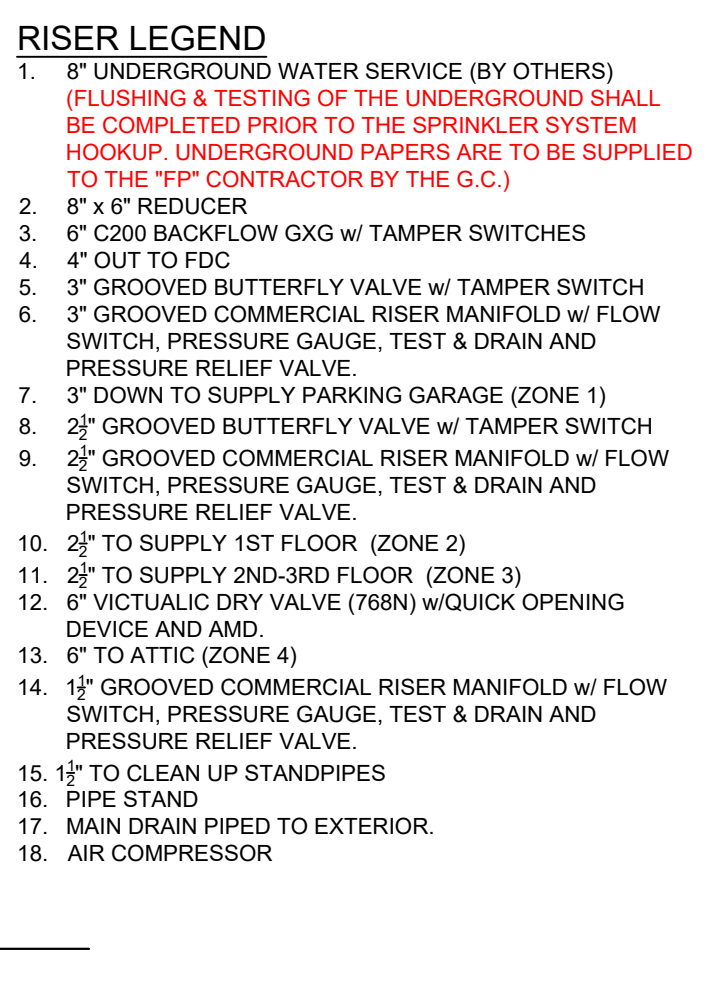


FIRE STOPPING DETAIL

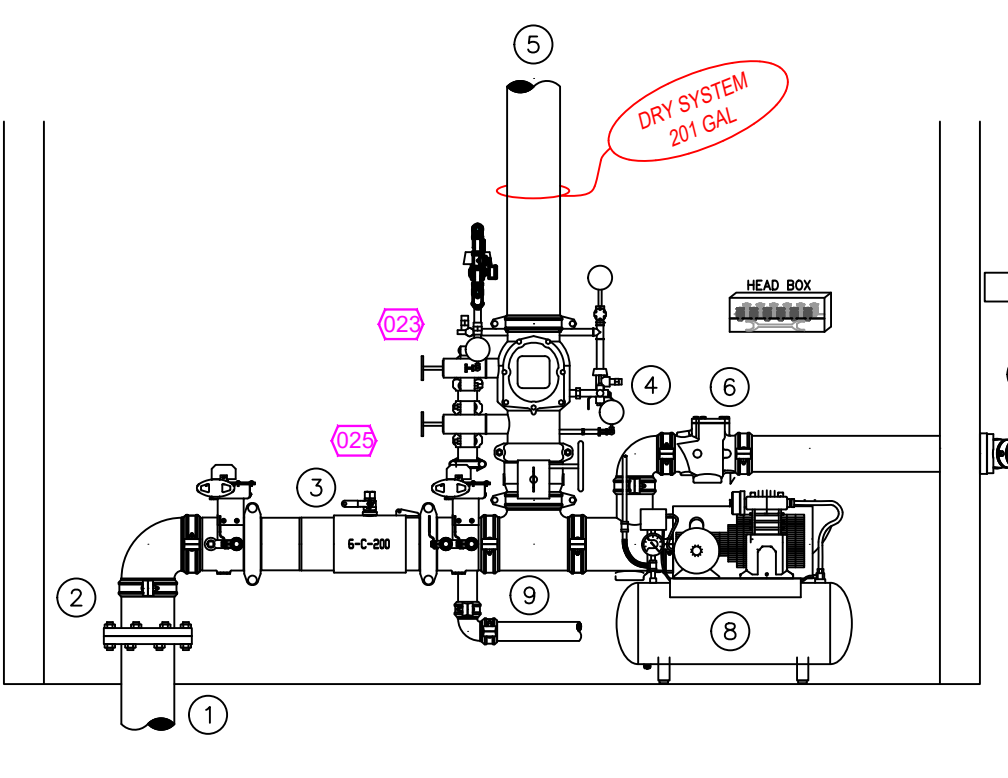
MAXIMUM DISTANCE BETWEEN HANGERS (FT.-IN.)

	NOMINAL PIPE SIZE (IN.)							
	3/4"	1"	1 1/4"	1 1/2"	2"	2 1/2"	3"	4"
STEEL PIPE EXCEPT THREADED LIGHTWALL	NA	12-0	12-0	15-0	15-0	15-0	15-0	15-0
THREADED LIGHTWALL STEEL PIPE	NA	12-0	12-0	12-0	12-0	NA	NA	NA
BLAZEMASTER CPVC	5-6	6-0	6-6	7-0	8-0	9-0	10-0	NA

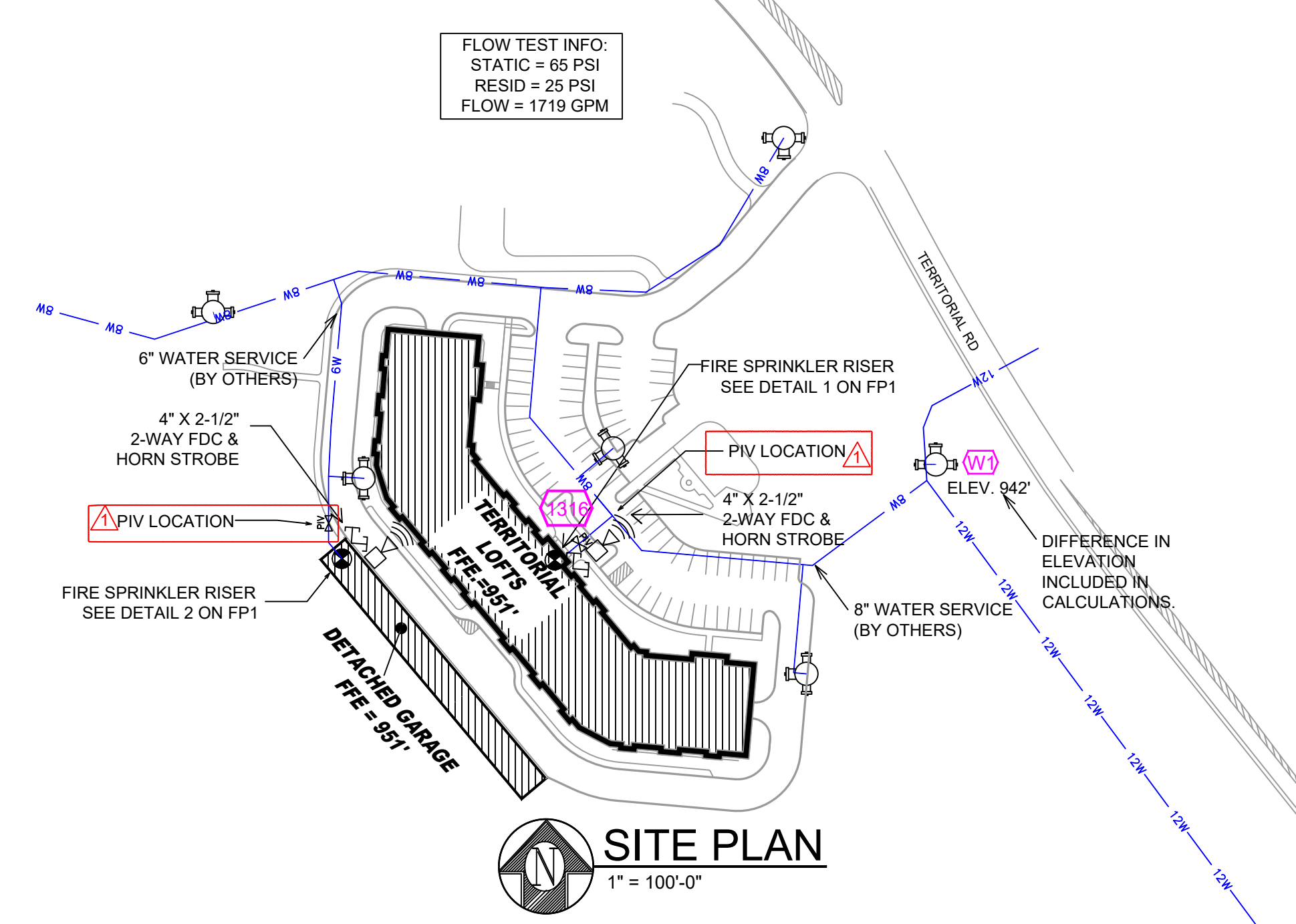
NFPA 13 HANGER SPACING



1 RISER DETAIL
SCALE= 1/2" : 1'-0"



2 RISER DETAIL
SCALE= 1/2" : 1'-0"



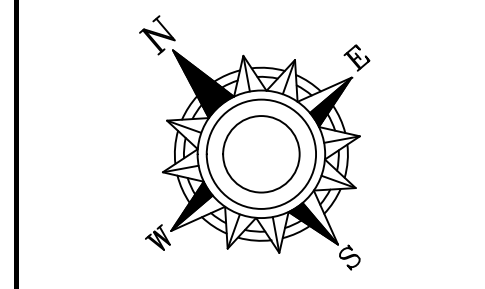
SITE PLAN
1" = 100'-0"

- GENERAL NOTES
- MINNESOTA STATE BUILDING CODE (2020)
 - OCCUPANCY: R-2 & S-2
 - TYPE OF CONSTRUCTION: V.A
 - SPRINKLERED AREAS (APPROXIMATE - SEE ARCHITECTURAL PLANS FOR ACTUAL)
 - PARKING GARAGE = 28,042 S.F. (ZONE 1)
 - 1ST FLOOR = 28,429 S.F. (ZONE 2)
 - 2ND FLOOR = 28,324 S.F. (ZONE 3)
 - 3RD FLOOR = 28,324 S.F. (ZONE 3)
 - ATTIC = 28,324 S.F. (ZONE 4)
 - TOTAL = 141,479 S.F.
 - DETACHED GARAGE = 5,667 S.F. (ZONE 1)
 - INSTALLATION STANDARDS:
 - SPRINKLER SYSTEM DESIGNED AND INSTALLED PER NFPA-13 (2016), NFPA-14 (2016)
 - SPRINKLER PIPE TYPES:
 - 1" BRANCH LINES TO BE BLAZEMASTER CPVC PIPING WITH CEMENTED FITTINGS
 - 1 1/2" THROUGH 2-1/2" MAIN & BRANCH LINES TO BE BLAZEMASTER CPVC PIPING WITH CEMENTED FITTINGS
 - 1" BRANCH LINES TO BE BLK MEGA-THREADED PIPING WITH THREADED FITTINGS
 - 1 1/2" THROUGH 3" MAIN & BRANCH LINES TO BE BLK MEGA-FLOW PIPING WITH GROOVED SHORT RADIUS FITTINGS
 - 1" BRANCH LINES TO BE THREADED BLK SCHEDULE 40 WITH THREADED FITTINGS
 - 1 1/2" THROUGH 6" MAIN & BRANCH LINES TO BE GROOVED BLK SCHEDULE 10 WITH GROOVED SHORT RADIUS FITTINGS
 - 2" MAINS & BRANCH LINES TO BE ROLL-GROOVED BLK SCHEDULE 10
 - DESIGN CRITERIA
 - LOBBY, UNITS, FITNESS ROOM, ATTIC AND SIMILAR AREAS ARE DESIGNED TO LIGHT HAZARD.
 - PARKING GARAGE, DETACHED GARAGE, MECH CLOSETS AND SIMILAR AREAS ARE DESIGNED TO ORDINARY HAZARD GROUP 1 AREAS
 - REMOTE AREA REDUCTIONS HAVE BEEN TAKEN WHERE APPLICABLE PER NFPA 13 SEC. 11.2.3.2.3
 - NOTES:
 - ALL MATERIAL TO BE NEW AND MEET U.L. STANDARDS
 - HANGERS TO BE INSTALLED IN ACCORDANCE WITH NFPA 13 (2016) - SEE PLAN FOR HANGING REQUIREMENTS
 - DRY SYSTEM PIPE SLOPE INSTALLATION: SPRINKLER MAINS TO BE 1/8" PER 10 FEET. SPRINKLER BRANCH LINES TO BE 1/8" PER 10 FEET
 - ATTIC = 645 GAL
 - DETACHED GARAGE = 201 GAL
 - SYMBOLS USED ON DRAWINGS:
 - PIPE ELEVATION A.F.F.
 - PIPE ELEVATION BELOW B.O.D.
 - ROOM HAZARD CLASSIFICATION (ALL ROOMS ARE CONSIDERED LIGHT HAZARD UNLESS NOTED)
 - HYDRAULIC CALCULATION JUNCTION POINT
 - CEILING HEIGHT
 - SCOPE OF WORK:
 - TO INSTALL NEW SPRINKLER SYSTEMS FOR THE APARTMENT BUILDING AND DETACHED GARAGE AS SHOWN ON THESE DRAWINGS. THE APARTMENT BUILDING WILL HAVE 4 ZONES: 1 WET ZONE FOR THE PARKING GARAGE, 1 WET ZONE FOR LEVEL 1, 1 WET ZONE FOR LEVELS 2 & 3 (COMBINED), AND 1 DRY ZONE FOR THE ATTIC. EACH STAIRWELL WILL HAVE 1-1/2" CLEAN UP STANDPIPES. ALL ZONE CONTROLS FOR THE APARTMENT TO BE LOCATED IN MECH ROOM 121. THE DETACHED GARAGE WILL HAVE 1 DRY SYSTEM WITH THE ZONE CONTROL LOCATED IN RISER ROOM 120.
 - ALL AREAS OF THE BUILDING TO BE INSTALLED AND COVERED IN ACCORDANCE WITH THE LOCAL AUTHORITY HAVING JURISDICTION AND PER NFPA 13 (2016)

DRIVEN FIRE CONSULTANTS
510 N. STENOIRE AVENUE, STOUX FALLS, SD 57158 PHONE: (605) 444-2930

TERRITORIAL LOFTS
19615 TERRITORIAL RD.
ROGERS, MN 55311

Contract No: C21-148
Drawing Date: 05/12/22
Scale: 1/8" = 1'-0"
Drawn By: BCJ
Approval By: STATE FIRE MARSHAL DIV.
SHEET NO: FP 1 of 6



1 2 3 4 5 6 7 8 9 10 11 12 13 14 15 16

PIPE LEGEND

- BLACK STEEL SPRINKLER PIPING
- CPVC BLAZEMASTER SPRINKLER PIPING

SYM/NT	POSITION	FINISH	TEMP	K	NPT	SN	MFG.	MODEL#	ESCUTCHION	MAX SPACING
388	PENDENT	WHITE	155	4.90	1/2"	TY2236	TYCO	TY2236	SEM-RECESSED	16 X 18 U.N.O.
44	PENDENT	WHITE	155	8.00	3/4"	TY4282	TYCO	EC-8C	SEM-RECESSED	28 X 10
14	SIDEWALL	WHITE	155	4.00	3/4"	TY4332	TYCO	TY4332	SEM-RECESSED	16 X 20
146	PENDENT	WHITE	200	5.60	1/2"	TY323	TYCO	TY-FRB	SEM-RECESSED	LH = 15 X 15, OH = 130 S.F.
216	SIDEWALL	WHITE	155	4.40	1/2"	TY2334	TYCO	LFI	SEM-RECESSED	16 X 16
56	SIDEWALL	WHITE	200	5.60	1/2"	TY3331	TYCO	TY-FRB	SEM-RECESSED	LH = 14X14, OH = 100 S.F.
8	PENDENT	WHITE	155	11.20	3/4"	TY5237	TYCO	EC-11	SEM-RECESSED	18 X 18
17	UPRIGHT	BRASS	200	5.60	1/2"	TY1517	TYCO	TY-B	N/A	130 S.F.
15	SIDEWALL	WHITE	155	4.00	1/2"	VK486	VIRKING	VK486	SEM-RECESSED	16 X 18 U.N.O.
9	UPRIGHT	BRASS	212	5.60	1/2"	RA5626	RELIABLE	AH99	N/A	10X15
79	SPRGD UPR	BRASS	212	8.00	3/4"	RA5622	RELIABLE	DS90-6	N/A	6 X 63
16	SPRGD UPR	BRASS	212	5.60	1/2"	RA5694	RELIABLE	DS90-27	N/A	6 X 40
112	UPRIGHT	BRASS	286	5.60	1/2"	TY3151	TYCO	TY-B	N/A	130 S.F.
3	SPRGD UPR	BRASS	200	8.00	3/4"	TY182	TYCO	BB3	N/A	6 X 60
58	UPRIGHT	BRASS	200	5.60	1/2"	TY313	TYCO	TY-FRB	N/A	ATTIC = 120 S.F., LH = 15X15
56	SPRGD UPR	BRASS	200	5.60	1/2"	TY151	TYCO	TY-B	N/A	130 S.F.
20	SIDEWALL	BRASS	200	5.60	1/2"	TY3331	TYCO	TY-FRB	N/A	14X14
2	SIDEWALL	BRASS	200	11.20	3/4"	TY3332	TYCO	ELOS20	N/A	16 X 16
1282 TOTAL SPRINKLERS										

SPRINKLER HEAD LEGEND

Design Area #3 HAZARD: RES
 Zone: 3 System Type: WET
 Location: UNIT 343

Flowing Outlets: 4
 Density: 0.10 Remote Area: 4 SPK
 Flow 168.3 gpm @ 57.7 psi
 Calculation Safety: 6.7 psi
 Includes 100 gpm Hose allowance

NOTE:
 4 SPRINKLERS CALCULATED PER NFPA-13 SEC. 11.3.1.1 DWELLING UNIT CALC

Design Area #4 HAZARD: RES
 Zone: 3 System Type: WET
 Location: UNIT 337

Flowing Outlets: 4
 Density: 0.10 Remote Area: 4 SPK
 Flow 166.6 gpm @ 55.1 psi
 Calculation Safety: 9.3 psi
 Includes 100 gpm Hose allowance

NOTE:
 4 SPRINKLERS CALCULATED PER NFPA-13 SEC. 11.3.1.1 DWELLING UNIT CALC

Design Area #5 HAZARD: RES
 Zone: 3 System Type: WET
 Location: CORRIDOR 300

Flowing Outlets: 4
 Density: 0.10 Remote Area: 75 LF
 Flow 226 gpm @ 55.0 psi
 Calculation Safety: 9.1 psi
 Includes 100 gpm Hose allowance

NOTE:
 CALCULATED PER ROOM DESIGN METHOD NFPA 13 SEC. 11.2.3.3.6 ALL EC SPRINKLERS WITHIN 75 LINEAR FEET OF THE CORRIDOR.

Design Area #6 HAZARD: RES
 Zone: 3 System Type: WET
 Location: UNIT 328

Flowing Outlets: 4
 Density: 0.10 Remote Area: 4 SPK
 Flow 173.2 gpm @ 54.5 psi
 Calculation Safety: 10.0 psi
 Includes 100 gpm Hose allowance

NOTE:
 4 SPRINKLERS CALCULATED PER NFPA-13 SEC. 11.3.1.1 DWELLING UNIT CALC

Design Area #1 HAZARD: RES
 Zone: 3 System Type: WET
 Location: UNIT 308

Flowing Outlets: 4
 Density: 0.10 Remote Area: 4 SPK
 Flow 166.7 gpm @ 59.2 psi
 Calculation Safety: 5.3 psi
 Includes 100 gpm Hose allowance

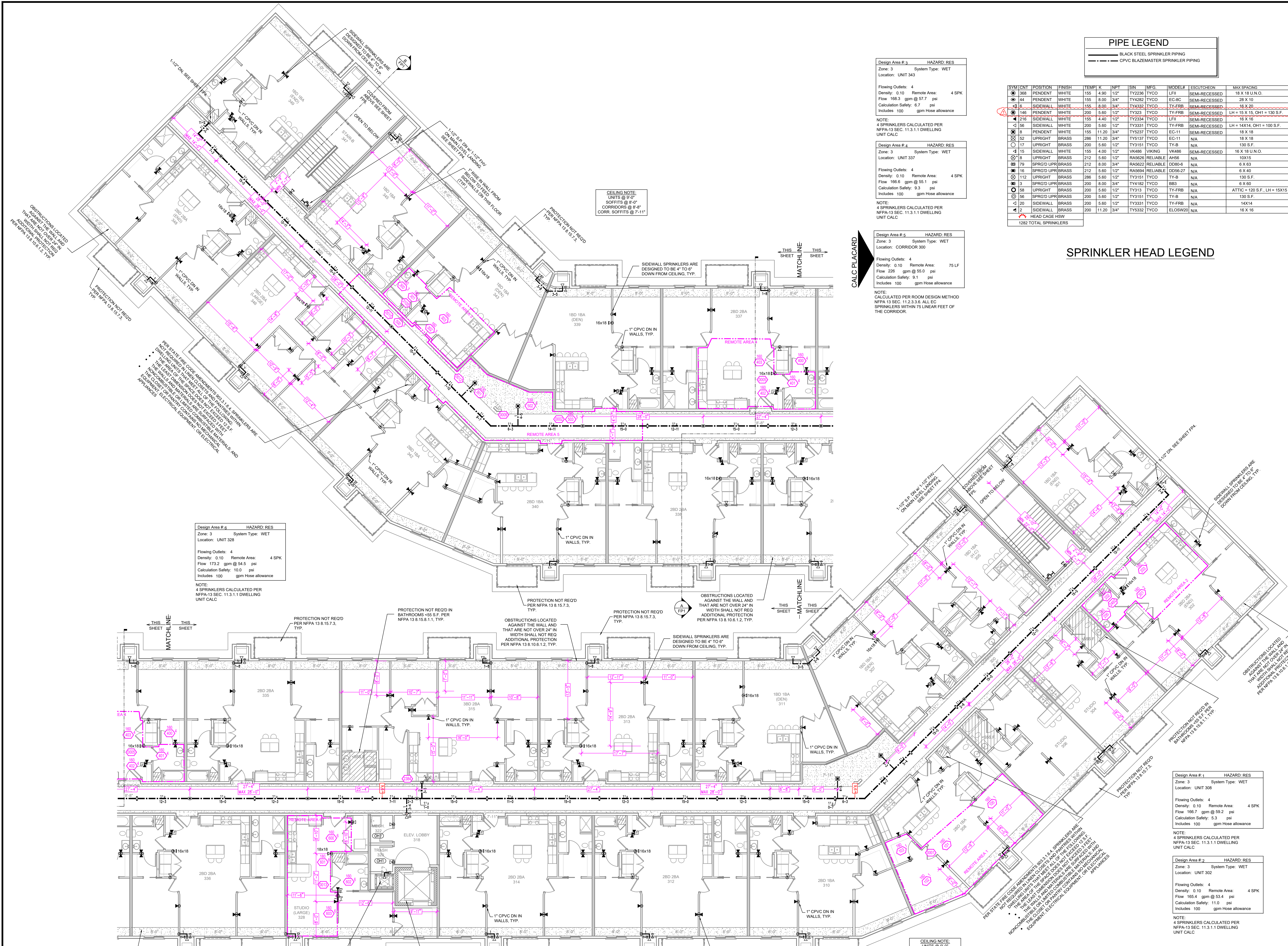
NOTE:
 4 SPRINKLERS CALCULATED PER NFPA-13 SEC. 11.3.1.1 DWELLING UNIT CALC

Design Area #2 HAZARD: RES
 Zone: 3 System Type: WET
 Location: UNIT 302

Flowing Outlets: 4
 Density: 0.10 Remote Area: 4 SPK
 Flow 165.4 gpm @ 53.4 psi
 Calculation Safety: 11.0 psi
 Includes 100 gpm Hose allowance

NOTE:
 4 SPRINKLERS CALCULATED PER NFPA-13 SEC. 11.3.1.1 DWELLING UNIT CALC

CEILING NOTE:
 UNITS @ 9'-0"
 SOFFITS @ 8'-0"
 CORR. SOFFITS @ 8'-4"
 CORR. SOFFITS @ 7'-11"

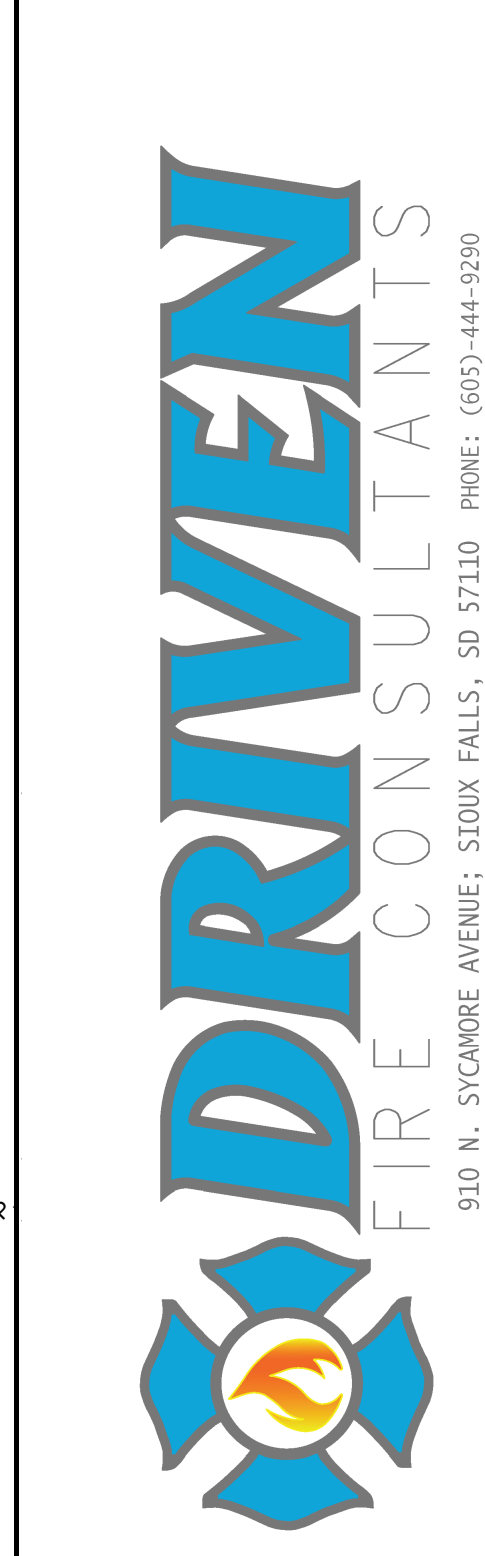


CALC PLACARD

- GENERAL NOTES
- SYSTEM INSTALLED PER NFPA 13 CODE EDITION AND STATE FIRE MARSHAL'S APPROVAL.
 - ALL PIPING SHALL BE 1" MINIMUM PIPE SIZE UNLESS OTHERWISE NOTED.
 - ALL PIPING SHALL BE WELDED OUTLETS & GROUNDED SHORT RADIUS FITTING.
 - ALL WELDING PER NFPA 13 & 13.6.4.1 SHALL BE DONE WITHOUT APPROVED SHOP DRAWINGS.
 - CONDUIT SHALL BE RIGID CONDUIT UNLESS OTHERWISE NOTED.
 - CONDUIT SHALL BE INSTALLED BY SPRINKLER CONTRACTOR AND INSTALLED BY SPRINKLER CONTRACTOR.
 - ALL HIGH TEMPERATURE HEADS ARE TO BE RELOCATED WHERE REQUIRED.
 - HEADS ARE TO BE INSTALLED IN THE MIDDLE OF THE ROOM UNLESS OTHERWISE NOTED.
 - ELECTRICAL WIRING, ALARM DETECTION AND SUPERVISORY BY OWNER.
 - WET SYSTEM PIPING FROM FREEZING.

APPROVAL STAMPS

NO.	REVISIONS	DATE
1	PLAN REVIEW	8-5-2022



TERRITORIAL LOFTS
 19615 TERRITORIAL RD.
 ROGERS, MN 55311

Drawing Title: FIRE PROTECTION PLAN

Contract No: C21-148

Drawing Date: 05/12/22

Scale: 1/8" = 1'-0"

Drawn By: BCJ

Approval By: STATE FIRE MARSHAL DIV.

SHEET NO. FP 5 of 6

LEVEL 3 FIRE SPRINKLER PLAN

SCALE = 1/8" = 1'-0"

