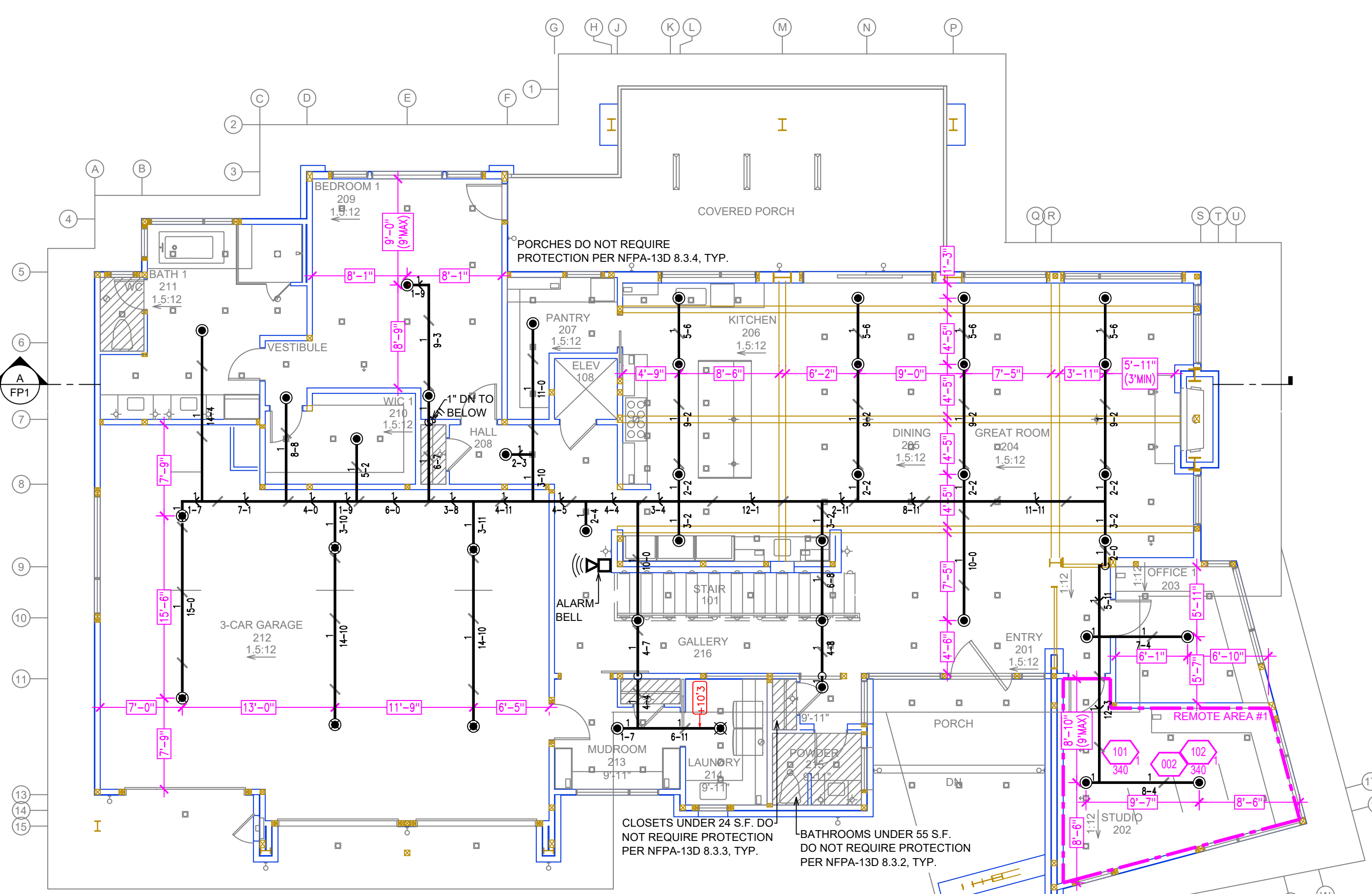
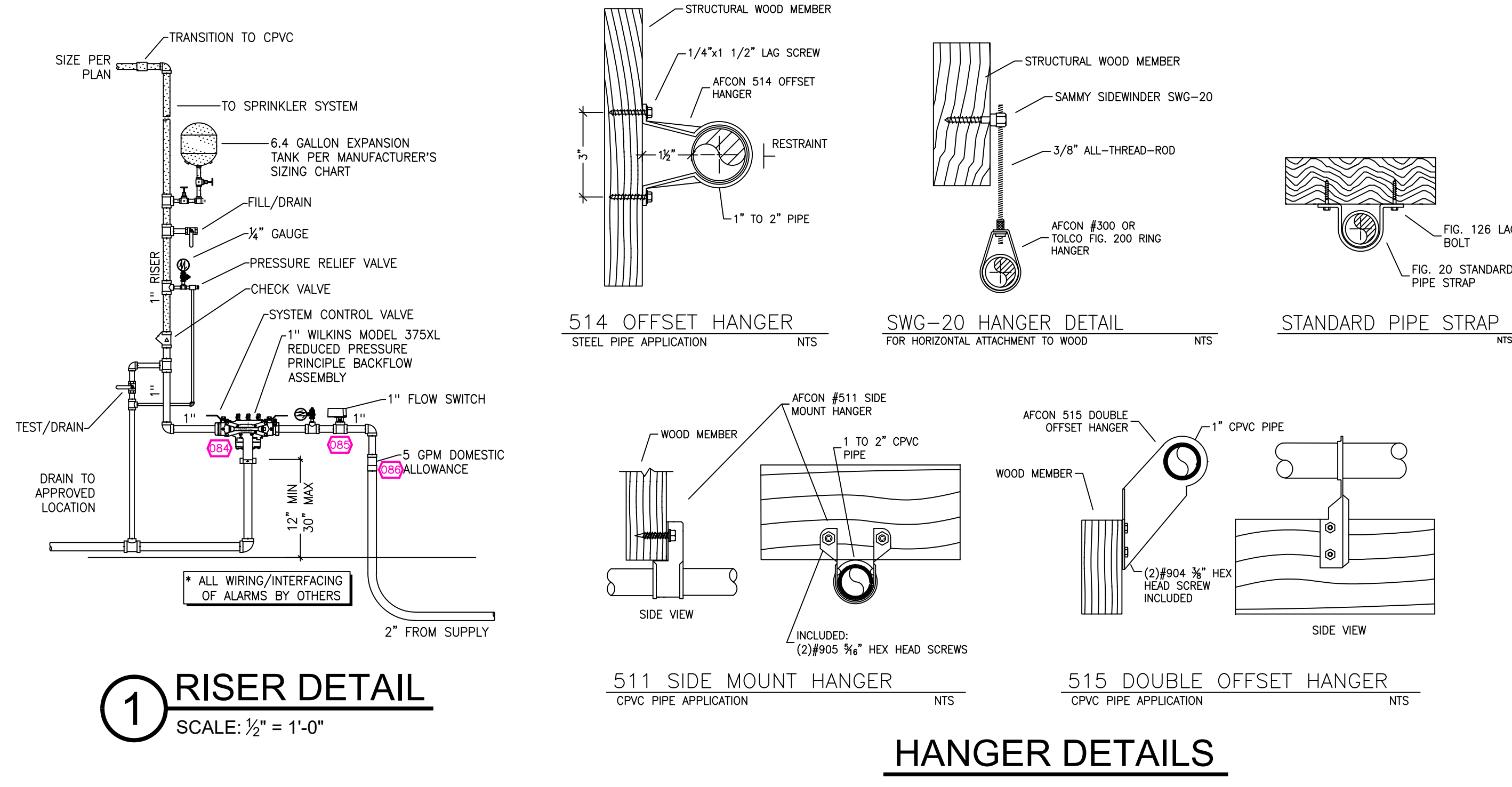


A BUILDING SECTION
SCALE: 1/8" = 1'-0"

LOWER FLOOR FIRE SPRINKLER PLAN
SCALE: 1/8" = 1'-0"



UPPER FLOOR FIRE SPRINKLER PLAN
SCALE: 1/8" = 1'-0"



1 RISER DETAIL
SCALE: 1/2" = 1'-0"

HANGER DETAILS

REMOTE AREA 1
Hydraulically Calculated System

This system as shown on Fire Protection Plan company print no. FP1 dated 12/19/2022 for SAMUELS RESIDENCE at STUDIO contract no. is designed to discharge at a rate of 0.05 gpm (L/min) per sq ft (m²) of floor area over a maximum area of NFPA 13D - 2 SPRINKLERS sq ft (m²) when supplied with water at the rate of 39.2 gpm (L/min) at 88.0 psi (bars) at the base of the riser. Hose stream allowance of 5 gpm (L/min) is included in the above.

Occupancy classification	UB UHF RWB
Commodity classification	N/A
Maximum storage height	N/A
Safety factor	11.8

PIPE VOLUMES:
(CPVC)

TOTAL PIPE FOOTAGE AND CAPACITY:
1" = 654' (32.34 GAL)

ADD 10% FOR DROPS AND PIPE SIZE DISCREPANCIES

TOTAL VOLUME: ±35.58 GALLONS

Nominal Pipe Diameter (in.)	Schedule 40	Schedule 10	CPVC
1	0.045	0.049	0.049
1 1/2	0.106	0.115	0.104
2	0.174	0.190	
2 1/2	0.248	0.283	

NFPA 13 - Table 9.2.2.1(a) Maximum Distance Between Hangers (ft-in.)

Nominal Pipe Size (in.)	Nominal Pipe Size (in.)							
	1	1 1/2	2	2 1/2	3	4	6	8
Steel Pipe except threaded	N/A	12-0	12-0	15-0	15-0	15-0	15-0	15-0
Threaded lightwall steel pipe	N/A	12-0	12-0	15-0	15-0	15-0	N/A	N/A
Copper tube	8-0	8-0	10-0	10-0	12-0	12-0	15-0	15-0
CPVC	5-6	6-0	6-6	7-0	8-0	9-0	N/A	N/A

SPRINKLER HEAT ZONES:

HEAT SOURCE:	ORDINARY TEMP SPRINKLER	INTERMEDIATE TEMP SPRINKLER
SIDE OF OPEN OR RECESSED FIRE PLACE	36"	12"
FRONT OF RECESSED FIRE PLACE	60"	36"
COAL OR WOOD BURNING STOVE	42"	12"
RANGE/OVEN, HOT AIR FLUES & UNINSULATED HEAT DUCT	18"	9"
UNINSULATED HOT WATER PIPES & 250-499 WATT LIGHTS	12"	6"
SIDE OF CEILING OR WALL MOUNTED HOT AIR DIFFUSERS	24"	12"
FRONT OF WALL MOUNTED HOT AIR DIFFUSERS	36"	18"
HOT WATER HEATER, FURNACE, LIGHT FIXTURE 0-250 WATT	6"	3"

- SPRINKLER SPACING**
- A SINGLE PENDENT SPRINKLER MAY BE SPACED AT A MAXIMUM OF 18'x18' (324 SQ. FT.) OR UP TO 9' OFF A WALL.
 - TWO OR MORE HEADS IN A COMPARTMENT SHALL BE SPACED AT A MAXIMUM OF 18'x18' (324 SQ. FT.) OR UP TO 9' OFF A WALL.
 - SPRINKLERS SHALL BE MEASURED AT PERPENDICULAR ANGLES TO WALLS AND ALONG THE SLOPES OF CEILINGS.

SUBMITTAL

NO SPRINKLERS REQUIRED IN:
BATHROOMS 55 SQ.FT. OR LESS IN AREA PER NFPA 13D SECTION 8.6.2
CLOSETS 24 SQ.FT. OR LESS IN AREA PER NFPA 13D SECTION 8.6.3

THIS FIRE SPRINKLER SYSTEM UTILIZES THE TYCO LFP ANTI-FREEZE SOLUTION

PROJECT SQUARE FOOTAGES

LOWER FLOOR = 2891 S.F.
MAIN FLOOR = 4424 S.F.

PROJECT SUMMARY:

PROJECT NAME: SAMUELS RESIDENCE
PROJECT ADDRESS: 520 LE VERNE ST, MAMMOTH LAKES, CA 93546
APN: 022-400-022

PROJECT TYPE: NEW T.I.
VB (5-B)

TYPE OF CONSTRUCTION: R-3

OCCUPANCY GROUP(S): 2

TOTAL SPRINKLERED AREA: 7315 SQ. FT.

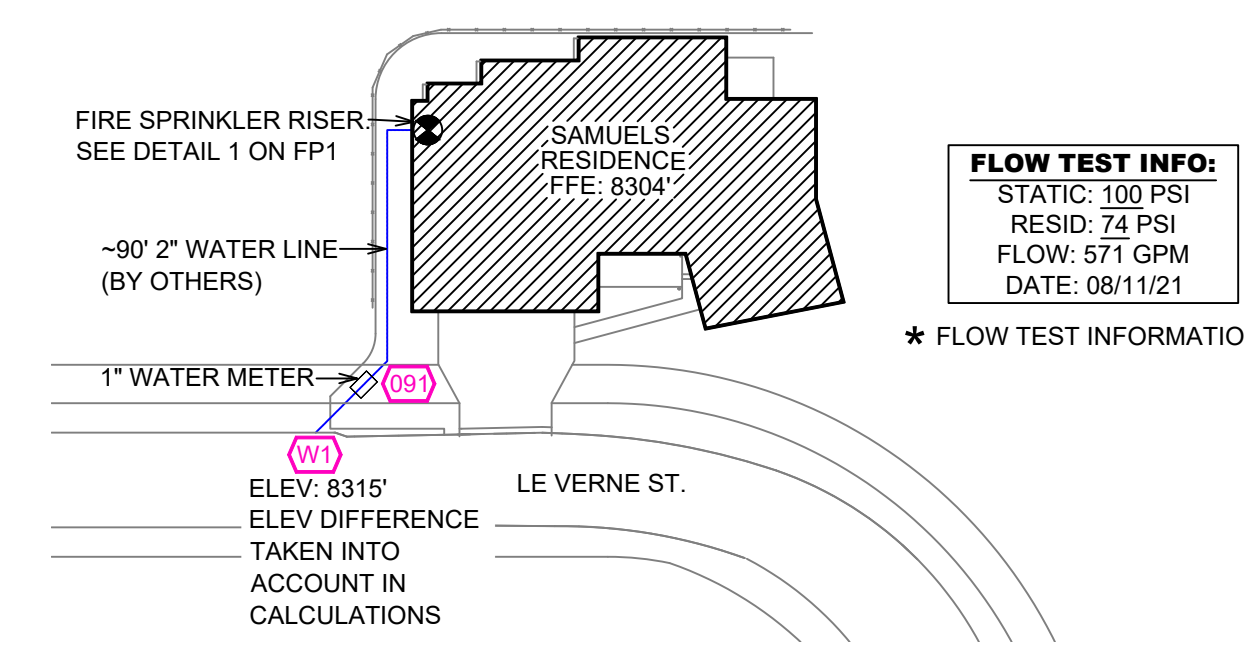
NFPA CODE REQUIREMENT: NFPA 13 NFPA 13R NFPA 13D

NUMBER OF SYSTEMS: 1

SYSTEM TYPE(S): WET ANTI-FREEZE DRY PREACTION

TOTAL SPRINKLERS: 64

SPECIAL NOTES: SEE FIRE SPRINKLER NOTES THIS SHEET



SITE PLAN
SCALE: 1" = 50'-0"

NO.	DATE	REVISIONS	DRAWN	CHECKED

GENERAL CONTRACTOR: AUTHORITY HAVING JURISDICTION:
MAMMOTH LAKES FIRE PROTECTION DIVISION
ADDRESS: 3150 MAIN STREET
CITY: MAMMOTH LAKES, CA 93546
PHONE: 760-934-2300
CONTACT:

ARCHITECT: FIELD INSPECTIONS:
1.
2.
3.
4.

FIRE SPRINKLER NOTES:

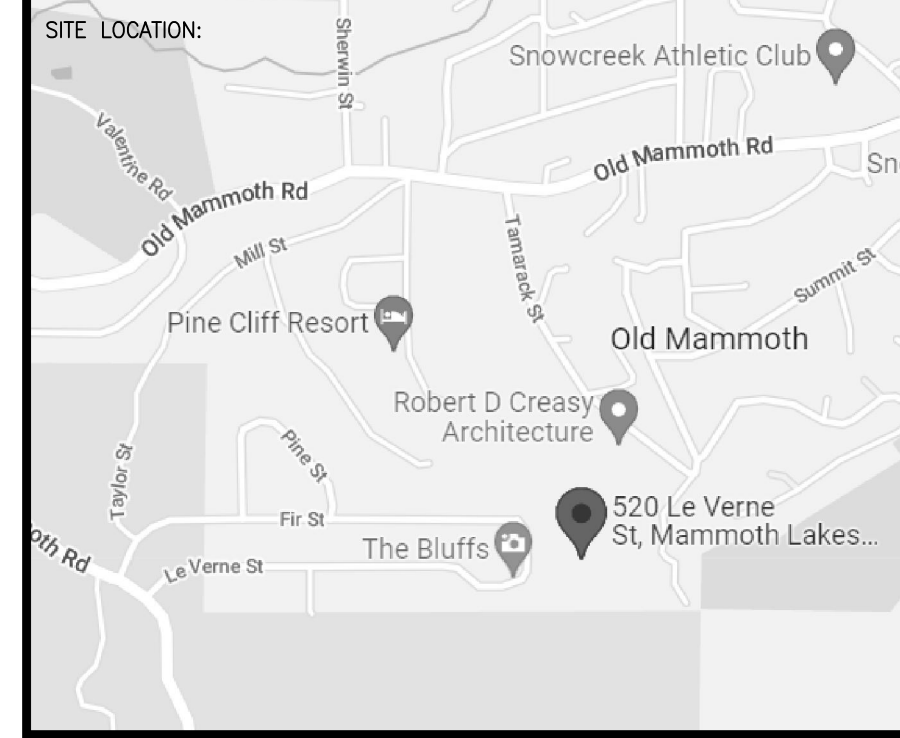
- THE PROPOSED FIRE SPRINKLER SYSTEM IS AN ANTI-FREEZE SYSTEM AND SHALL BE DESIGNED AND INSTALLED IN ACCORDANCE WITH NFPA 13D.
- THIS SPRINKLER SYSTEM IS HYDRAULICALLY CALCULATED IN ACCORDANCE WITH NFPA 13D TO PROVIDE 0.05 GPM PER SQ. FT. OVER THE MOST REMOTE AREA.
- THE NUMBER OF DESIGN SPRINKLERS SHALL INCLUDE ALL SPRINKLERS WITHIN A COMPARTMENT UP TO A MAXIMUM OF 2 SPRINKLERS.
- ALL SPRINKLER PIPING CONCEALED ABOVE CEILINGS SHALL BE CPVC PIPING UNLESS OTHERWISE NOTED.
- ALL DIMENSIONS SHOWN ARE CENTER TO CENTER U.O.N.
- ALL HANGERS SHALL BE INSTALLED IN ACCORDANCE WITH NFPA 13D AND/OR NFPA 13 REQUIREMENTS.
- HOLES THROUGH SOLID STRUCTURAL MEMBERS SHALL BE PERMITTED TO SERVE AS HANGERS FOR THE SUPPORT OF SYSTEM PIPING.
- ALL SYSTEM PIPING SHALL BE TESTED FOR LEAKAGE AT NORMAL SYSTEM OPERATING PRESSURE.
- THE OWNER SHALL BE RESPONSIBLE FOR MAINTAINING A MINIMUM TEMPERATURE OF 40° FAHRENHEIT TO PROTECT FROM FREEZING, THE SECTIONS OF THE SPRINKLER SYSTEM WHERE THERE IS NO ANTI-FREEZE IN THE PIPING (UPSTREAM OF THE RISER).

SPRINKLER HEAD LEGEND

SYM	QTY	TYPE	MFG.	MODEL#	NPT	K	TEMP	FINISH	S.L.N.
⊗	54	CONCEALED	SENJO	RC-RES	1/2"	4.9	162	WHITE	SS8464
⊗	4	CONCEALED	SENJO	RC-RES	1/2"	4.9	205	WHITE	SS8464
⊗	6	SEM-RECESS	SENJO	FR-RES	1/2"	4.9	205	WHITE	SS4451

64 TOTAL SPRINKLERS ON THIS SHEET

- FIRE SPRINKLER SYMBOLS**
- ⊗ AUTOMATIC SPRINKLER RISER
 - ⊕ EARTHQUAKE BRACING
 - ⊕ 2-WAY & 4-WAY
 - ⊕ PIPE HANGER
 - ⊕ HYDRAULIC REF PT
 - ⊕ GRID OR THRD CAP
 - ⊕ TYPICAL POINT OF CONNECTION (POC)
 - +13' ELEV. BELOW DECK OR TOS
 - +12'-9" ELEV. ABOVE FINISHED FLOOR
 - ↔ CHANGE ELEVATION UP
 - ↔ CHANGE ELEVATION DN
 - ⊕ INSPECTORS TEST
 - ⊕ AUX DRAIN
 - ⊕ REVISION NOTATION
 - ⊕ LOCAL ALARM



PROJECT NAME: FIRE SPRINKLER PLANS FOR SAMUELS RESIDENCE
520 LE VERNE ST
MAMMOTH LAKES, CA 93546

STAMP:

DRAWING TITLE: FIRE SPRINKLER PLAN

SCALE: 1/8" = 1'-0" JOB NO.:
BORN ON DATE: 12/19/2022 DWG NO.:
FILE: SHEET 1 OF 1