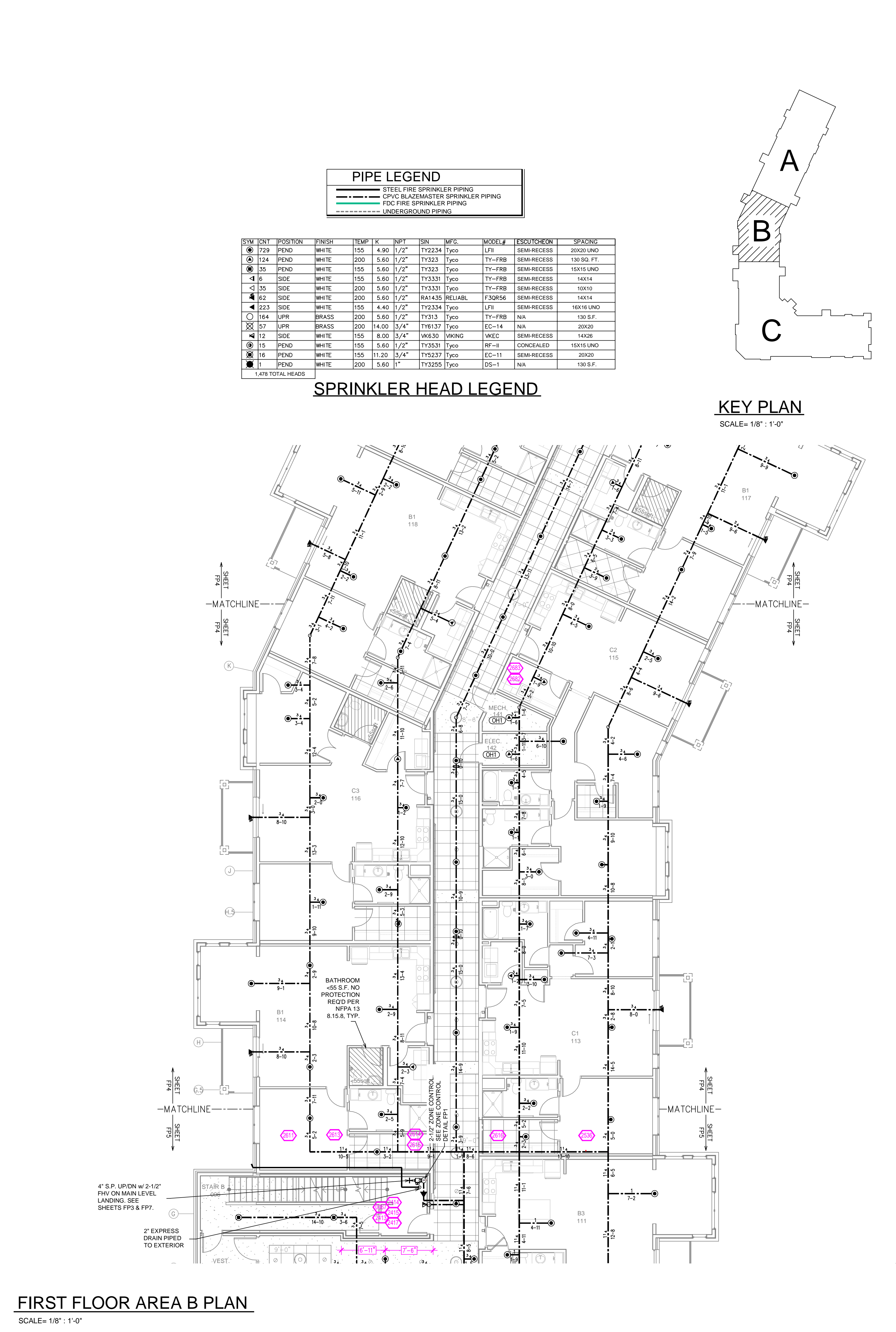




FIRST FLOOR AREA A PLAN
SCALE= 1/8" = 1'-0"



FIRST FLOOR AREA B PLAN
SCALE= 1/8" = 1'-0"

PIPE LEGEND	
	STEEL FIRE SPRINKLER PIPING
	CPVC BLAZEMASTER SPRINKLER PIPING
	FDC FIRE SPRINKLER PIPING
	UNDERGROUND PIPING

SYM	QTY	POSITION	FINISH	TEMP	K	INPT	SIN	MPG.	MODEL#	ESDUTICION	SPACING
729	PEND	WHITE	155	4.90	1/2"	TY2234	Typo	LFI		SEMI-RECESS	20X20 UNO
124	PEND	WHITE	200	5.60	1/2"	TY2323	Typo	TY-FRB		SEMI-RECESS	130 SQ. FT.
15	PEND	WHITE	155	5.60	1/2"	TY2323	Typo	TY-FRB		SEMI-RECESS	15X15 UNO
35	SIDE	WHITE	155	5.60	1/2"	TY2331	Typo	TY-FRB		SEMI-RECESS	14X14
35	SIDE	WHITE	200	5.60	1/2"	TY2331	Typo	TY-FRB		SEMI-RECESS	10X10
62	SIDE	WHITE	200	5.60	1/2"	RA1435 RELIAB	F3QR56			SEMI-RECESS	14X14
223	SIDE	WHITE	155	4.40	1/2"	TY2334	Typo	LFI		SEMI-RECESS	16X16 UNO
164	UPR	BRASS	200	5.60	1/2"	TY313	Typo	TY-FRB		NA	130 S.F.
57	UPR	BRASS	200	14.00	3/4"	TY137	Typo	EC-14		NA	20X20
12	SIDE	WHITE	155	8.00	3/4"	VK630 VKINC	WVEC			SEMI-RECESS	14X26
15	PEND	WHITE	155	5.60	1/2"	TY3531	Typo	RF-II		CONCEALED	15X15 UNO
116	PEND	WHITE	155	11.20	3/4"	TY2327	Typo	EC-11		SEMI-RECESS	20X20
1	PEND	WHITE	200	5.60	1"	TY3255	Typo	DS-1		NA	130 S.F.
1,478 TOTAL HEADS											

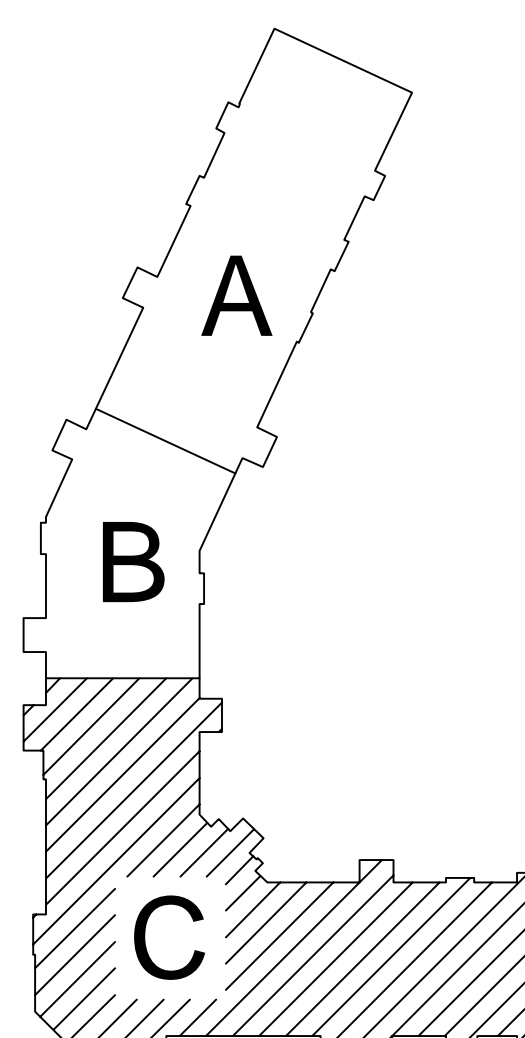
SPRINKLER HEAD LEGEND

KEY PLAN
SCALE= 1/8" = 1'-0"

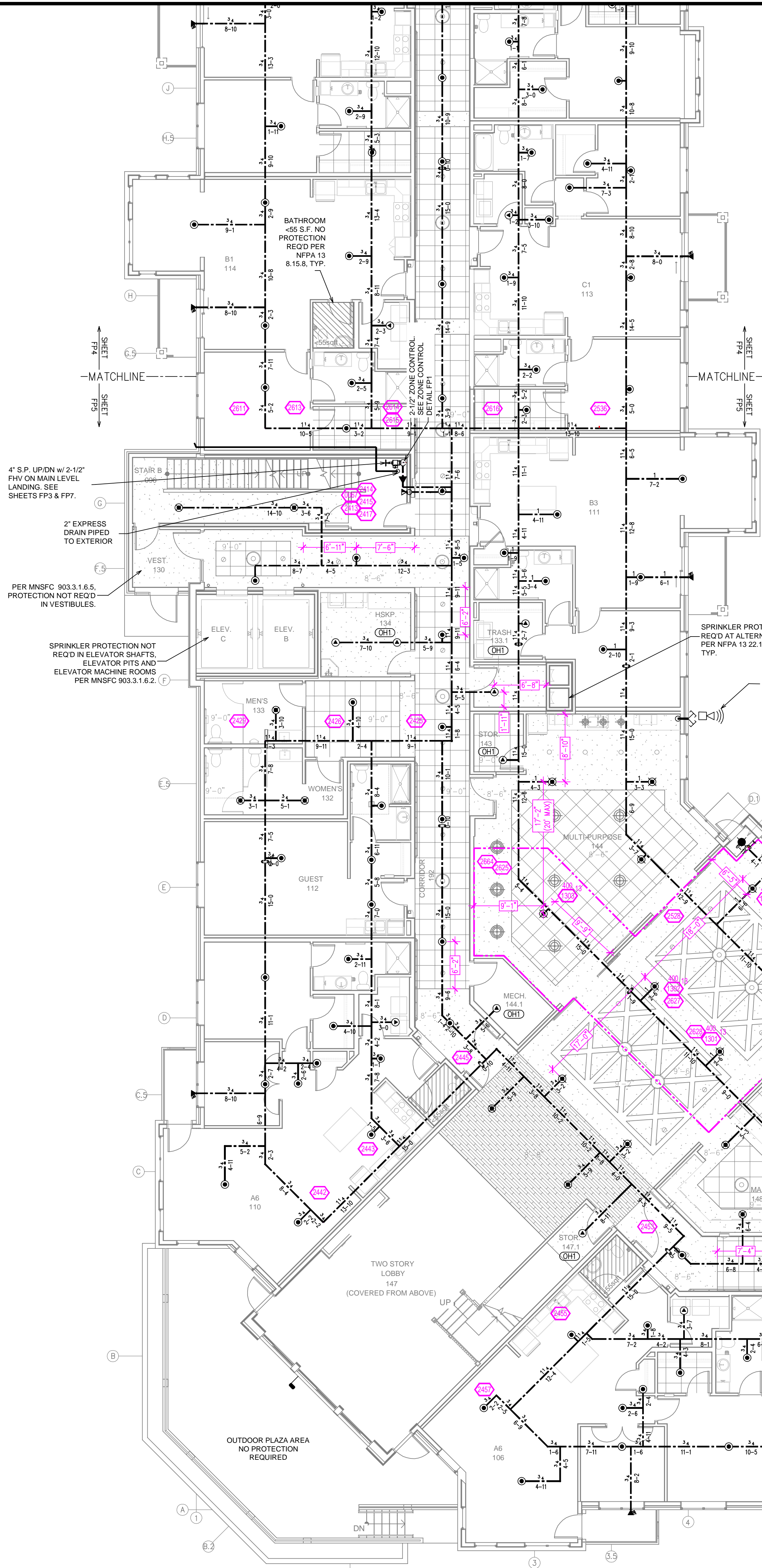
KEY PLAN
SCALE= 1/8" = 1'-0"

- **PENDANT NOTE: RESIDENTIAL PENDANTS DESIGNED TO 20X20 SPACING THROUGHOUT
- CEILING NOTE: UNITS @ 9'-0" CORRIDORS @ 9'-0" SOFFITS @ 8'-6" ACT NOT INDICATED @ 11"
- SPACING NOTE: *HALLWAYS: MAX 16x16 SPACING *UNITS: MAX 20x20 SPACING

	<p>General Notes</p> <ol style="list-style-type: none"> System installed per NFPA-13 (2016 Edition) and State Fire Marshal. All equipment for this system shall be U.L. listed. Minimum pipe size shall be 1" nominal pipe. All Sch. 10 & Eddy Flow piping has welded outlets & grooved fittings all wetting per NFPA-13 (3-4.2). No installation or fabrication to begin without approved shop drawings. All Pipe Locations are to be Field Measured Prior to Fabrication and Installation by Sprinkler Contractor. All Dimensions Shown are Center to Center. High Temperature Heads are to be Field Located Where Required. Provide one spare head cabinet w/ 6 hds. & one hd wrench. Hangers are to be U.L. Listed and F.M. Approved. Electrical wiring, alarm, detection and supervisory by owner. Owner's responsibility to provide adequate heating to prevent wet system piping from freezing. 	<p>REVISIONS</p> <table border="1"> <tr> <th>NO.</th> <th>DESCRIPTION</th> <th>DATE</th> </tr> <tr> <td>1</td> <td>PUMP ROOM LAYOUT REVISION</td> <td>04/26/22</td> </tr> </table>	NO.	DESCRIPTION	DATE	1	PUMP ROOM LAYOUT REVISION	04/26/22	<p>APPROVAL STAMPS</p>	<p>Drawing Title: FIRE PROTECTION PLAN</p> <p>LEXINGTON LANDING 915 ALBION AVE ST. PAUL, MN 55116</p>	<p>Contract No: C21-133</p> <p>Drawing Date: 02/28/2022</p> <p>Scale: 1/8" = 1'-0"</p> <p>Drawn By: JLN</p> <p>Approval By: STATE FIRE MARSHAL DIV.</p> <p>SHEET NO: FP4 OF 11</p>
	NO.	DESCRIPTION	DATE								
1	PUMP ROOM LAYOUT REVISION	04/26/22									

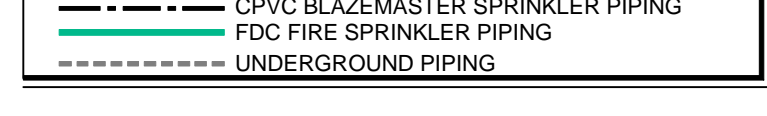


KEY PLAN
SCALE= 1/8" = 1'-0"



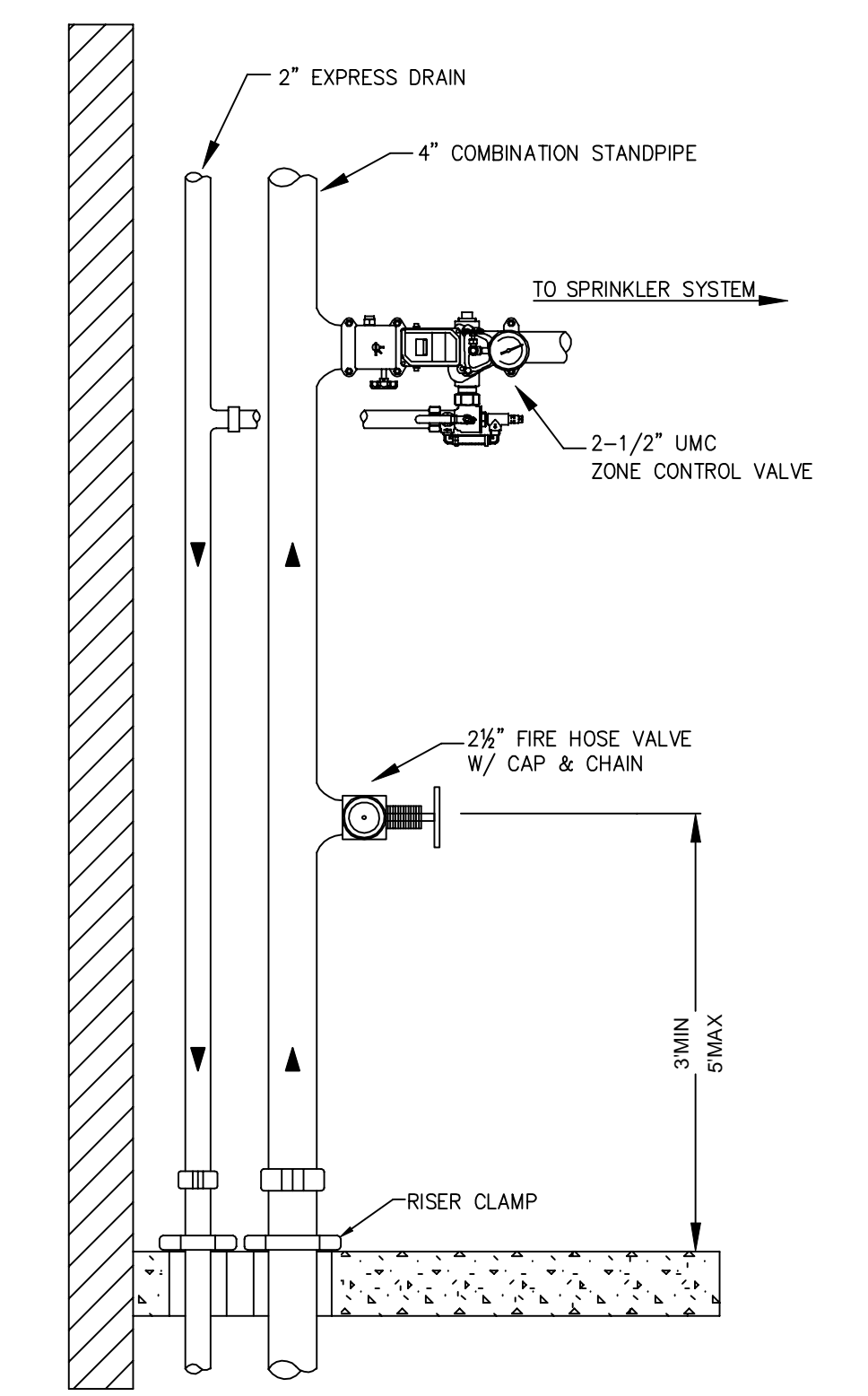
FIRST FLOOR AREA C PLAN
SCALE= 1/8" = 1'-0"

PIPE LEGEND



SYM	CNT	POSITION	FINISH	TEMP	K	INPT	SIN	MFG.	MODEL#	ESOUT/CHON	SPACING
⊙	729	PEND	WHITE	155	4.90	1/2"	TY2234	TYCO	LFI	SEMI-RECESS	20X20 UNO
⊙	124	PEND	WHITE	200	5.60	1/2"	TY323	TYCO	TY-FRB	SEMI-RECESS	130 S.F.
⊙	35	PEND	WHITE	155	5.60	1/2"	TY323	TYCO	TY-FRB	SEMI-RECESS	10X15 UNO
⊙	6	SIDE	WHITE	155	5.60	1/2"	TY3331	TYCO	TY-FRB	SEMI-RECESS	14X14
⊙	35	SIDE	WHITE	200	5.60	1/2"	TY3331	TYCO	TY-FRB	SEMI-RECESS	10X10
⊙	62	SIDE	WHITE	200	5.60	1/2"	RA1435	RELIABL	F3QR56	SEMI-RECESS	14X14
⊙	223	SIDE	WHITE	155	4.40	1/2"	TY2334	TYCO	LFI	SEMI-RECESS	16X16 UNO
⊙	164	UPR	BRASS	200	5.60	1/2"	TY313	TYCO	TY-FRB	N/A	130 S.F.
⊙	57	UPR	BRASS	200	14.00	3/4"	TY6137	TYCO	EC-14	N/A	20X20
⊙	12	SIDE	WHITE	155	8.00	3/4"	WK630	WKING	WKEC	SEMI-RECESS	14X26
⊙	15	PEND	WHITE	155	5.60	1/2"	TY3531	TYCO	RF-II	CONCEALED	15X15 UNO
⊙	16	PEND	WHITE	155	11.20	3/4"	TY5237	TYCO	EC-11	SEMI-RECESS	20X20
⊙	1	PEND	WHITE	200	5.60	1"	TY3255	TYCO	DS-1	N/A	130 S.F.
1,479 TOTAL HEADS											

SPRINKLER HEAD LEGEND



TYPICAL STAIR w/ ZONE CONTROL
SCALE= N.T.S.

Design Area #: 13 HAZARD: LH
Zone: 2 System Type: WET
Location: ONE STORY LOBBY

Flowing Outlets: 5 Remote Area: 900
Density: 0.10
Flow 314.4 gpm @ 31.6 psi
Calculation Safety: 14.3 psi
Includes 49.8 gpm Hose allowance

NOTES:
WITH A CEILING HEIGHT LESS THAN 10' AND THE USE OF QUICK RESPONSE SPRINKLERS A MINIMUM REMOTE AREA OF 900 S.F. USED PER NFPA 13 FIG 11.2.3.2.1

**PENDANT NOTE:
RESIDENTIAL PENDANTS DESIGNED TO 20X20 SPACING THROUGHOUT

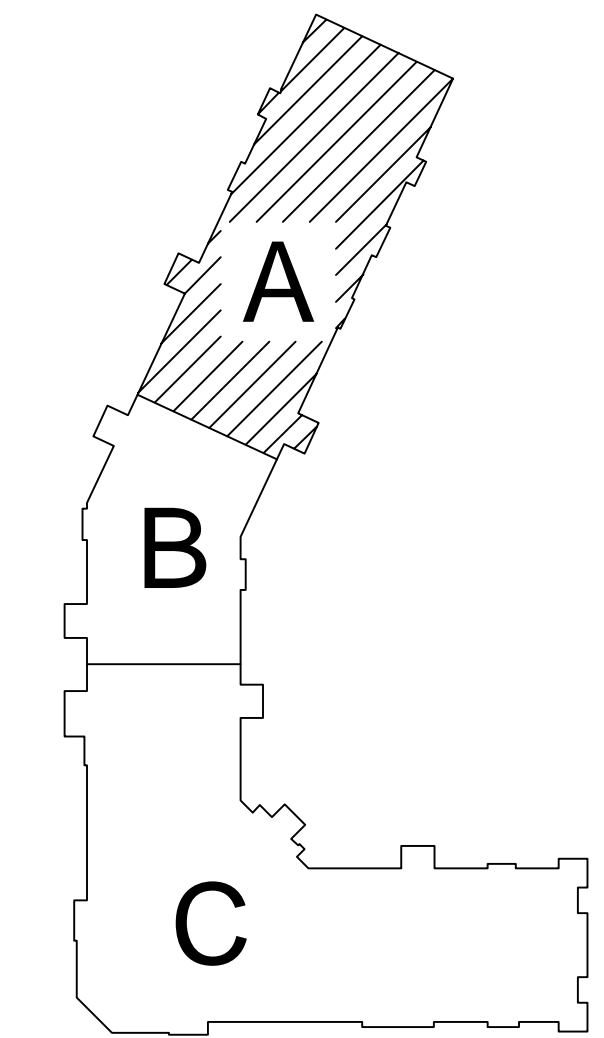
CEILING NOTE:
UNITS @ 9'-0" CORRIDORS @ 9'-0" SOFFITS @ 8'-6" ACT NOT INDICATED 8'-11"

SPACING NOTE:
HALLWAYS' MAX 16" SPACING UNITS MAX 20X20 SPACING

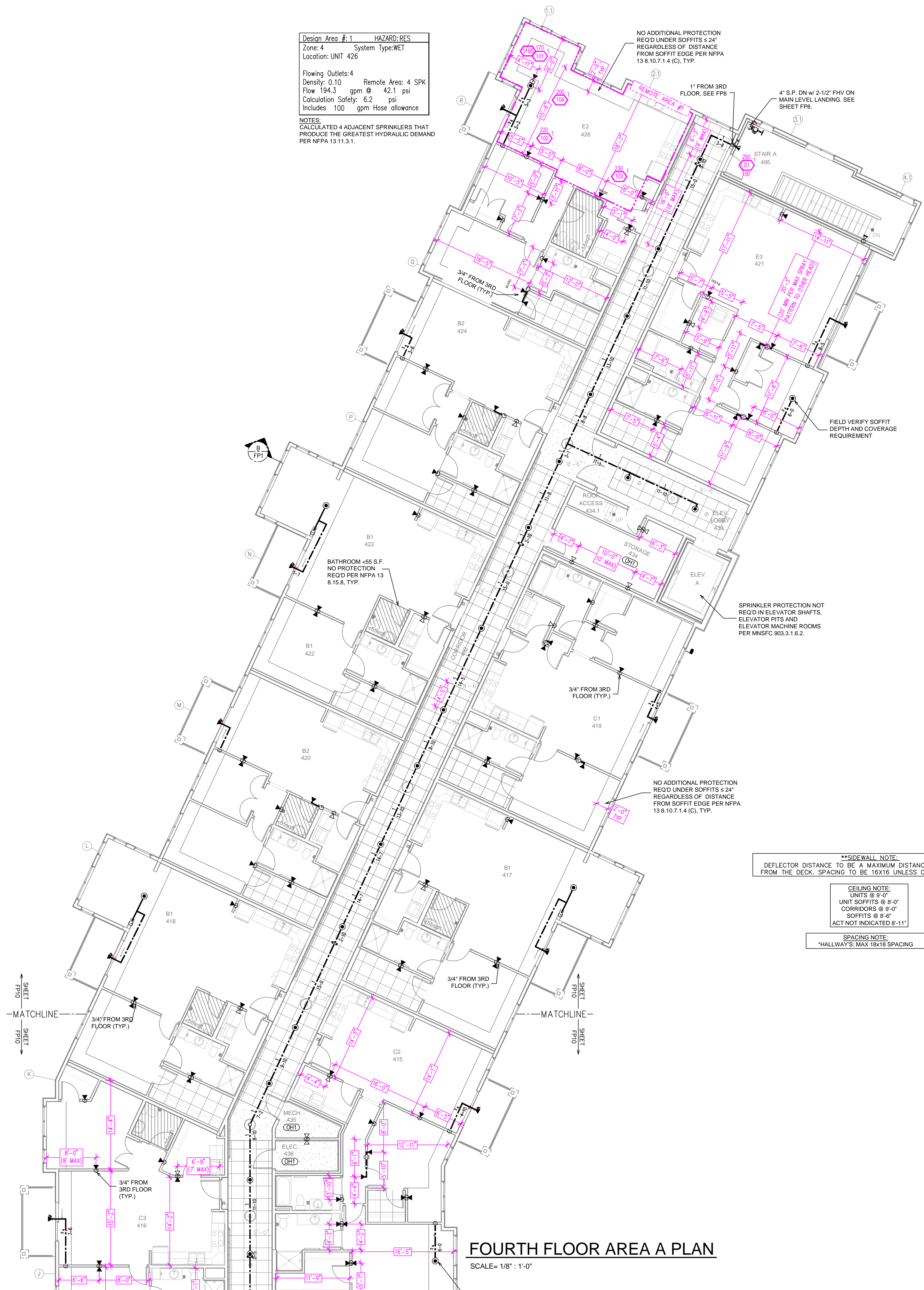
	<p>General Notes</p> <ol style="list-style-type: none"> System installed per NFPA-13 (2016 Edition) and State Fire Marshal. All equipment for this system shall be U.L. listed. Minimum pipe size shall be 1" nominal pipe. All Sch-10 & Eddy Flow piping has welded outlets & grooved fittings all wetting per NFPA-13 (3-6.2). No installation or fabrication to begin without approved shop drawings. All Pipe Locations are to be Field Measured Prior to Fabrication and Installation by Sprinkler Contractor. All Dimensions Shown are Center to Center. High Temperature Heads are to be Field Located Where Required. Provide one spare head cabinet w/ 6 hds. & one hd wrench. Hangers are to be U.L. Listed and F.M. Approved. Electrical wiring, alarm, detection and supervisory by owner. Owner's responsibility to provide adequate heating to prevent wet system piping from freezing. 	<p>REVISIONS</p> <table border="1"> <tr> <th>NO.</th> <th>DESCRIPTION</th> <th>DATE</th> </tr> <tr> <td>1</td> <td>PUMP ROOM LAYOUT REVISION</td> <td>04/26/22</td> </tr> </table>	NO.	DESCRIPTION	DATE	1	PUMP ROOM LAYOUT REVISION	04/26/22	<p>APPROVAL STAMPS</p>	<p>Drawing Title: FIRE PROTECTION PLAN</p> <p>LEXINGTON LANDING 915 ALBION AVE ST. PAUL, MN 55116</p>	<p>Contract No. C21-133</p> <p>Drawing Date: 02/28/2022</p> <p>Scale: 1/8" = 1'-0"</p> <p>Drawn By: JLN</p> <p>Approval By: STATE FIRE MARSHAL DIV.</p> <p>SHEET NO. FP5 OF 11</p>
	NO.	DESCRIPTION	DATE								
1	PUMP ROOM LAYOUT REVISION	04/26/22									

Design Area # 1 HAZARD: RES
 Zone: 4 System Type: WET
 Location: UNIT 426
 Flowing Outlets: 4
 Density: 0.10 Remote Area: 4 SPK
 Flow 194.3 gpm @ 42.1 psi
 Calculation Safety: 6.2 psi
 Includes: 100 gpm Hose allowance
 NOTES:
 CALCULATED 4 ADJACENT SPRINKLERS THAT
 PRODUCE THE GREATEST HYDRAULIC DEMAND
 PER NFPA 13 11.3.1.

NO ADDITIONAL PROTECTION
 REQD UNDER SOFFITS ≤ 24"
 REGARDLESS OF DISTANCE
 FROM SOFFIT EDGE PER NFPA
 13 8.10.7.1.4 (C), TYP.



KEY PLAN
 SCALE= 1/8" : 1'-0"



FOURTH FLOOR AREA A PLAN
 SCALE= 1/8" : 1'-0"

PIPE LEGEND

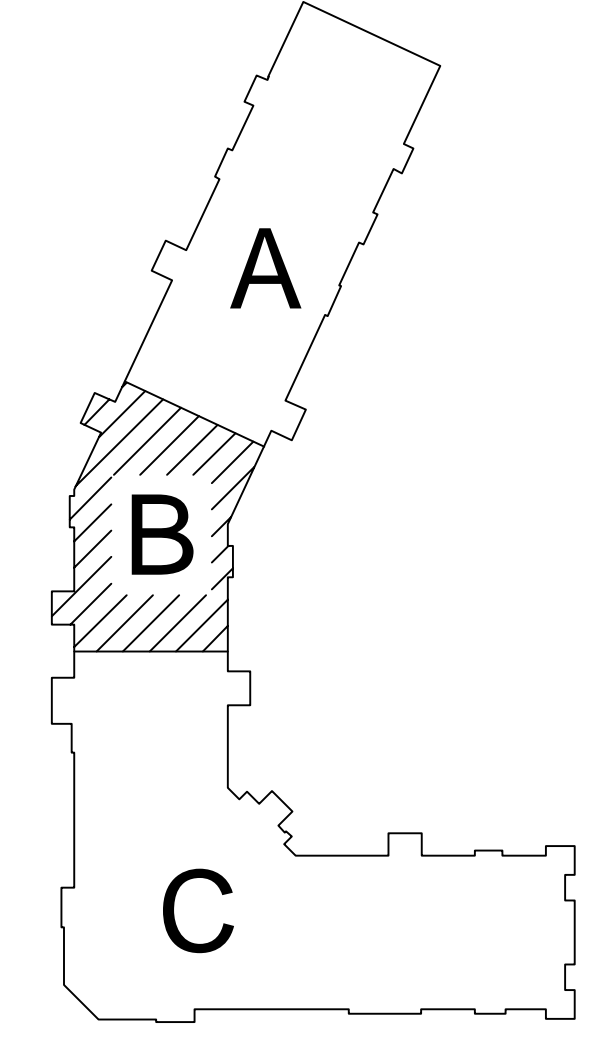
---	STEEL FIRE SPRINKLER PIPING
---	CPVC BLAZEMASTER SPRINKLER PIPING
---	FDC FIRE SPRINKLER PIPING
---	UNDERGROUND PIPING

SPRINKLER HEAD LEGEND

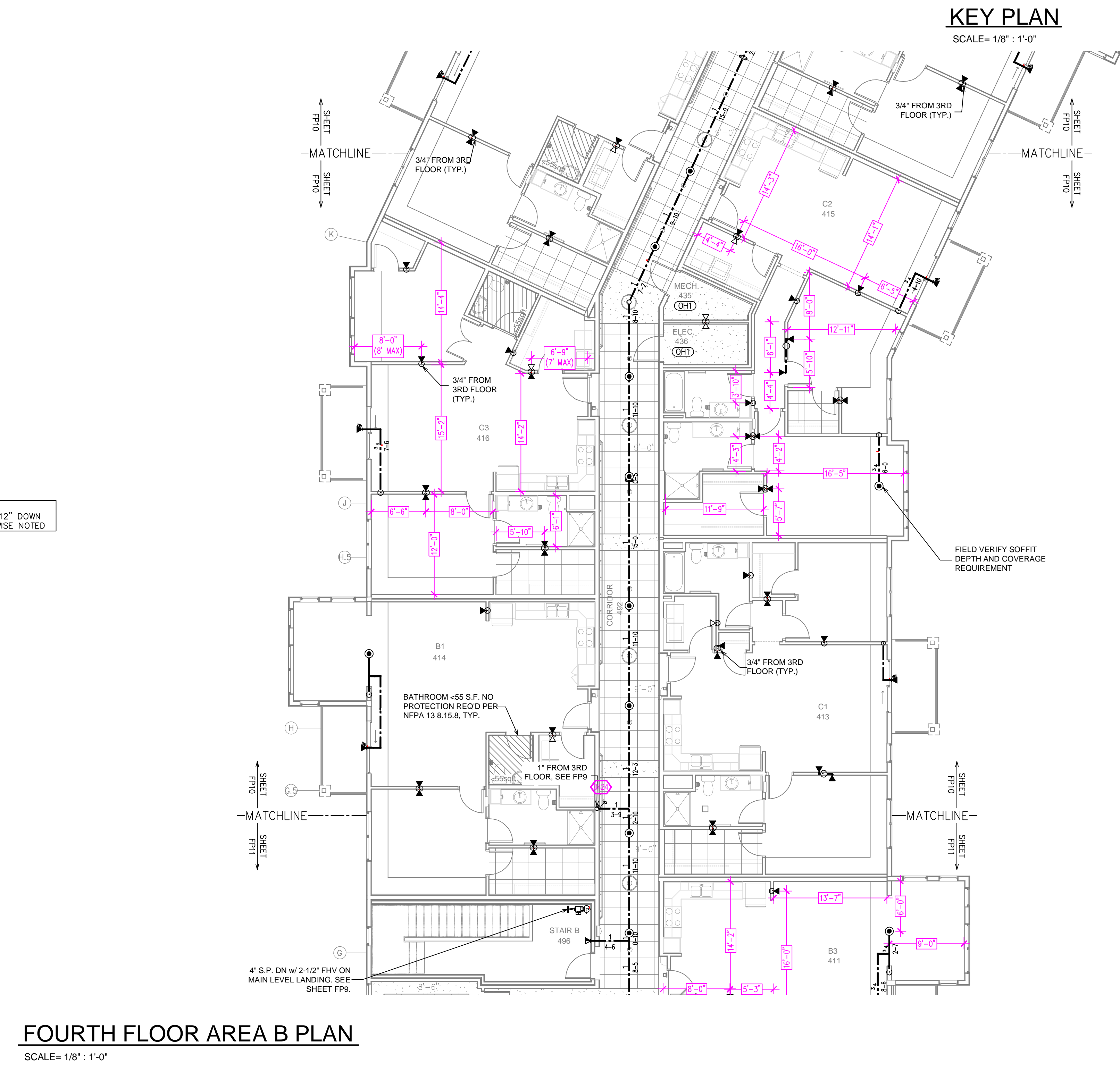
SYM	QTY	POSITION	FINISH	TEMP	K	NPT	SIN	MFG.	MODEL#	ESCU/TYPE/CON	SPACING
⊙	729	PEND	WHITE	155	4.90	1/2"	TY2234	Typco	LFI	SEM-RECESS	20X20 UNO
⊙	124	PEND	WHITE	200	5.60	1/2"	TY323	Typco	TY-FRB	SEM-RECESS	130X50 FT
⊙	35	PEND	WHITE	155	5.60	1/2"	TY3331	Typco	TY-FRB	SEM-RECESS	15X15 UNO
⊙	6	SIDE	WHITE	155	5.60	1/2"	TY3331	Typco	TY-FRB	SEM-RECESS	14X14
⊙	35	SIDE	WHITE	200	5.60	1/2"	TY3331	Typco	TY-FRB	SEM-RECESS	10X10
⊙	82	SIDE	WHITE	200	5.60	1/2"	RA1435	RELIABL	F3QR56	SEM-RECESS	14X14
⊙	223	SIDE	WHITE	155	4.40	1/2"	TY2334	Typco	LFI	SEM-RECESS	16X16 UNO
⊙	164	UPRR	BRASS	200	5.60	1/2"	TY313	Typco	TY-FRB	N/A	135 S.F.
⊙	57	UPRR	BRASS	200	14.00	3/4"	TY6137	Typco	EC-14	N/A	20X20
⊙	12	SIDE	WHITE	155	8.00	3/4"	WK630	WIKING	WKEC	SEM-RECESS	14X26
⊙	15	PEND	WHITE	155	5.60	1/2"	TY3531	Typco	RF-II	CONCEALED	15X15 UNO
⊙	16	PEND	WHITE	155	11.20	3/4"	TY5237	Typco	EC-11	SEM-RECESS	20X20
⊙	1	PEND	WHITE	200	3.60	1"	TY3255	Typco	DS-1	N/A	130 S.F.

1,478 TOTAL HEADS

SPRINKLER HEAD LEGEND

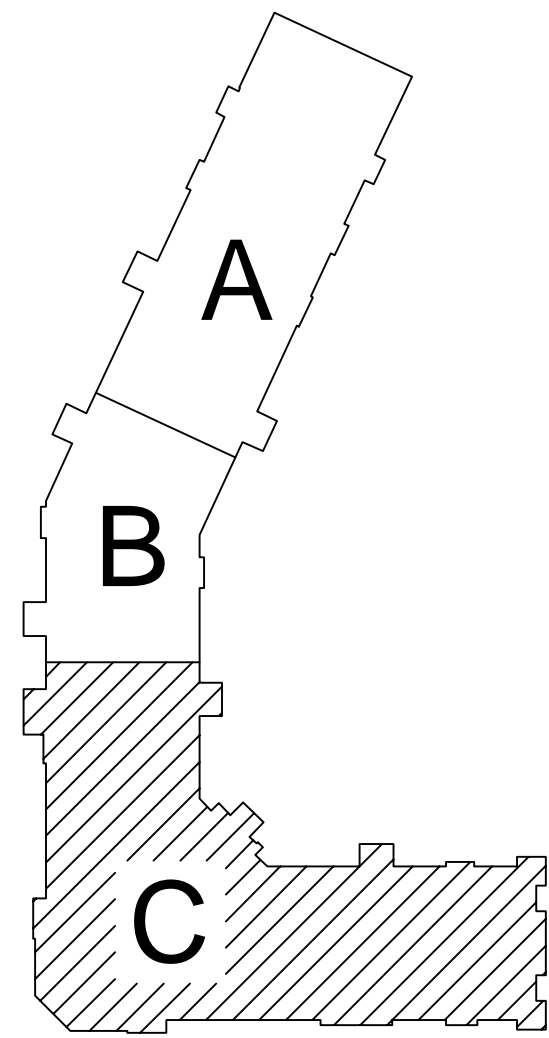


KEY PLAN
 SCALE= 1/8" : 1'-0"

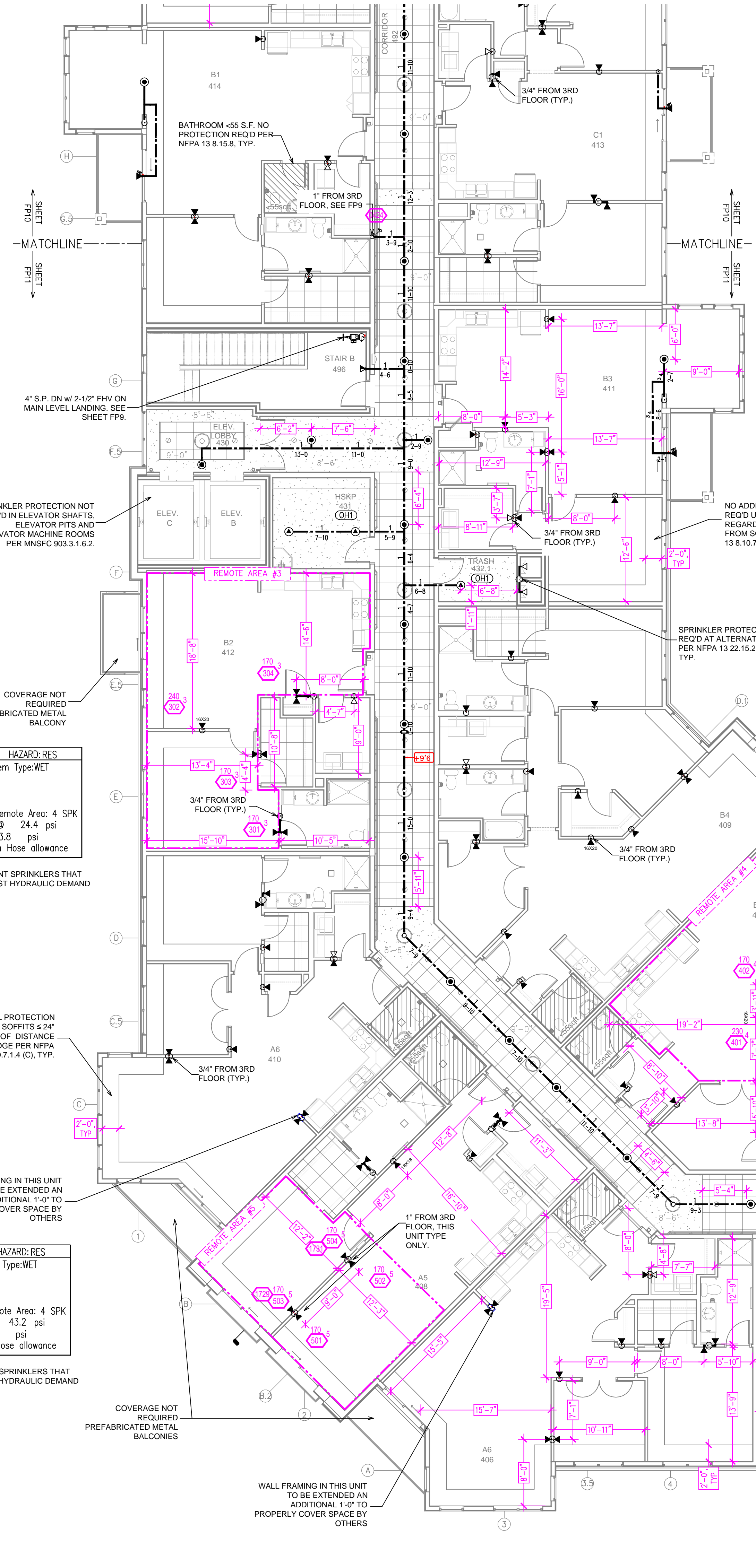


FOURTH FLOOR AREA B PLAN
 SCALE= 1/8" : 1'-0"

	<p>General Notes</p> <ol style="list-style-type: none"> System installed per NFPA-13 (2016 Edition) and State Fire Marshal. All equipment for this system shall be U.L. listed. Minimum pipe size shall be 1" nominal pipe. All Sch. 40 & Eddy Flow piping has welded outlets & grooved fittings all wetting per NFPA-13 (3-4.2). No installation or fabrication to begin without approved shop drawings. All Pipe Locations are to be Field Measured Prior to Fabrication and Installation by Sprinkler Contractor. All Dimensions Shown are Center to Center. High Temperature Heads are to be Field Located Where Required. Provide one spare head cabinet w/ 6 hrs. & one hd wrench. Hangers are to be U.L. Listed and F.M. Approved. Electrical wiring, alarm, detection and supervisory by owner. Owner's responsibility to provide adequate heating to prevent wet system piping from freezing. 	<p>REVISIONS</p> <table border="1"> <tr> <td>1</td> <td>PUMP ROOM LAYOUT REVISION</td> <td>DATE</td> <td>04/26/22</td> </tr> </table>	1	PUMP ROOM LAYOUT REVISION	DATE	04/26/22	<p>APPROVAL STAMPS</p>	<p>Drawing Title: FIRE PROTECTION PLAN</p> <p>LEXINGTON LANDING 915 ALBION AVE ST. PAUL, MN 55116</p>	<p>Contract No. C21-133</p> <p>Drawing Date: 02/28/2022</p> <p>Scale: 1/8" = 1'-0"</p> <p>Drawn By: JLN</p> <p>Approval By: STATE FIRE MARSHAL DIV.</p> <p>SHEET NO. FP10 OF 11</p>
	1	PUMP ROOM LAYOUT REVISION	DATE	04/26/22					
<p>FOOTNOTES:</p> <p>**SIDEWALL NOTE: DEFLECTOR DISTANCE TO BE A MAXIMUM DISTANCE OF 12" DOWN FROM THE DECK. SPACING TO BE 16X16 UNLESS OTHERWISE NOTED</p> <p>CEILING NOTE: UNITS @ 9'-0" CORRIDORS @ 8'-0" SOFFITS @ 8'-0" ACT NOT INDICATED 8'-11"</p> <p>SPACING NOTE: HALLWAYS: MAX 16X18 SPACING</p>									



KEY PLAN
SCALE= 1/8" : 1'-0"



FOURTH FLOOR AREA C PLAN
SCALE= 1/8" : 1'-0"

PIPE LEGEND

- STEEL FIRE SPRINKLER PIPING
- CPVC BLAZEMASTER SPRINKLER PIPING
- FDC FIRE SPRINKLER PIPING
- UNDERGROUND PIPING

SYM	QNT	POSITION	FINISH	TEMP	K	NPT	SN	WFC	MODEL	ESSTY/STYEN	SPACING
729	PEND	WHITE	155	4.90	1/2"	TY2234	TY2234	TY2234	LFI	SEMI-RECESS	20X20 UNO
124	PEND	WHITE	200	5.60	1/2"	TY323	TY323	TY323	TY-FRB	SEMI-RECESS	130 SQ. FT.
35	PEND	WHITE	155	5.60	1/2"	TY323	TY323	TY323	TY-FRB	SEMI-RECESS	18X15 UNO
4	SIDE	WHITE	155	5.60	1/2"	TY3331	TY3331	TY3331	TY-FRB	SEMI-RECESS	14X14
35	SIDE	WHITE	200	5.60	1/2"	TY3331	TY3331	TY3331	TY-FRB	SEMI-RECESS	10X10
42	SIDE	WHITE	200	5.60	1/2"	RA1435	RELIABL	F3QR56	SEMI-RECESS	14X14	
223	SIDE	WHITE	155	4.40	1/2"	TY2334	TY2334	TY2334	LFI	SEMI-RECESS	16X16 UNO
164	UPR	BRASS	200	5.60	1/2"	TY313	TY313	TY313	TY-FRB	N/A	130 S.F.
57	UPR	BRASS	200	14.00	3/4"	TY6137	TY6137	TY6137	EC-14	N/A	20X20
12	SIDE	WHITE	155	6.00	3/4"	WK630	WK630	WK630	WKC	SEMI-RECESS	14X26
15	PEND	WHITE	155	5.60	1/2"	TY3531	TY3531	TY3531	RF-II	CONCEALED	18X14 UNO
16	PEND	WHITE	155	11.20	3/4"	TY5237	TY5237	TY5237	EC-11	SEMI-RECESS	20X20
1	PEND	WHITE	200	5.60	1"	TY3255	TY3255	TY3255	DS-1	N/A	130 S.F.

1,476 TOTAL HEADS

SPRINKLER HEAD LEGEND

Design Area # 4 HAZARD: RES
Zone: 4 System Type: WET
Location: ROOM 407
Flowing Outlets: 4
Density: 0.10 Remote Area: 4 SPK
Flow 186.7 gpm @ 31.7 psi
Calculation Safety: 16.7 psi
Includes 100 gpm Hose allowance

NOTES:
CALCULATED 4 ADJACENT SPRINKLERS THAT PRODUCE THE GREATEST HYDRAULIC DEMAND PER NFPA 13 11.3.1.

**SIDEWALL NOTE:
DEFLECTOR DISTANCE TO BE A MAXIMUM DISTANCE OF 12" DOWN FROM THE DCC. SPACING TO BE 18X18 UNLESS OTHERWISE NOTED

CEILING NOTE:
UNIT SOFFITS @ 8'-0"
CORRIDORS @ 9'-0"
SOFFITS @ 9'-4"
ACT NOT INDICATED 8'-11"

SPACING NOTE:
*HALLWAYS: MAX 18X18 SPACING

• DRY SPRINKLER BARREL LENGTH TO BE DETERMINED BY THE FP CONTRACTOR IN ACCORDANCE WITH NFPA 13 RECOMMENDATIONS AND MANUFACTURER'S SPECIFICATIONS TO MEET MINIMUM BARREL LENGTH FOR AMBIENT TEMPERATURES. FITTER AND G.C. TO ENSURE THAT EXTERIOR PENETRATIONS ARE PROPERLY SEALED TO PREVENT COLD AIR FROM ENTERING ANNULAR SPACE AROUND DRY SPRINKLER, TYP.
• FP CONTRACTOR TO COORDINATE SOFFIT WIDTH WITH G.C. TO PROVIDE ADEQUATE SPACE FOR DRY SPRINKLER OF THE APPROPRIATE LENGTH, TYP.

Design Area # 3 HAZARD: RES
Zone: 4 System Type: WET
Location: ROOM 412
Flowing Outlets: 4
Density: 0.10 Remote Area: 4 SPK
Flow 198.5 gpm @ 24.4 psi
Calculation Safety: 23.8 psi
Includes 100 gpm Hose allowance

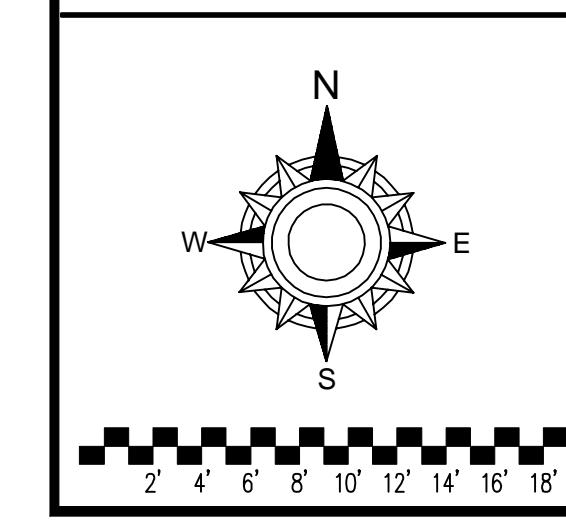
NOTES:
CALCULATED 4 ADJACENT SPRINKLERS THAT PRODUCE THE GREATEST HYDRAULIC DEMAND PER NFPA 13 11.3.1.

Design Area # 5 HAZARD: RES
Zone: 4 System Type: WET
Location: ROOM 408
Flowing Outlets: 4
Density: 0.10 Remote Area: 4 SPK
Flow 168.3 gpm @ 43.2 psi
Calculation Safety: 5.5 psi
Includes 100 gpm Hose allowance

NOTES:
CALCULATED 4 ADJACENT SPRINKLERS THAT PRODUCE THE GREATEST HYDRAULIC DEMAND PER NFPA 13 11.3.1.

Design Area # 2 HAZARD: RES
Zone: 4 System Type: WET
Location: 4TH FLOOR HALLWAY
Flowing Outlets: 5
Density: 0.10 Remote Area: 4 SPK
Flow 169.2 gpm @ -6.6 psi
Calculation Safety: 55.2 psi
Includes 100 gpm Hose allowance

NOTES:
CALCULATED 4 ADJACENT SPRINKLERS THAT PRODUCE THE GREATEST HYDRAULIC DEMAND PER NFPA 13 11.3.1. HALLWAY HEADS CALCULATED AT 18X18 MAX SPACING.



General Notes

- System installed per NFPA-13 (2016 Edition) and State Fire Marshal.
- All equipment for this system shall be U.L. listed.
- Minimum pipe size shall be 1" nominal pipe.
- All Sch-10 & Edge Flow piping has welded outlets & grooved fittings all wetting per NFPA-13 (3-4.2).
- No installation or fabrication to begin without approved shop drawings.
- All Pipe Locations are to be Field Measured Prior to Fabrication and Installation by Sprinkler Contractor.
- All Dimensions Shown are Center to Center.
- High Temperature Heads are to be Field Located Where Required.
- Provide one spare head cabinet w/ 6 hds. & one hd wrench.
- Hangers are to be U.L. Listed and F.M. Approved.
- Electrical wiring, alarm, detection and supervisory by owner.
- Owner's responsibility to provide adequate heating to prevent wet system piping from freezing.

NO.	REVISIONS	DATE	APPROVAL STAMPS
1	PUMP ROOM LAYOUT REVISION	04/26/22	

NO.	REVISIONS	DATE	APPROVAL STAMPS

Drawing Title: FIRE PROTECTION PLAN

LEXINGTON LANDING
915 ALBION AVE
ST. PAUL, MN 55116

Contract No: C21-133
Drawing Date: 02/28/2022
Scale: 1/8" = 1'-0"
Drawn By: JLN
Approval By: STATE FIRE MARSHAL DIV.
SHEET NO: FP11 OF 11