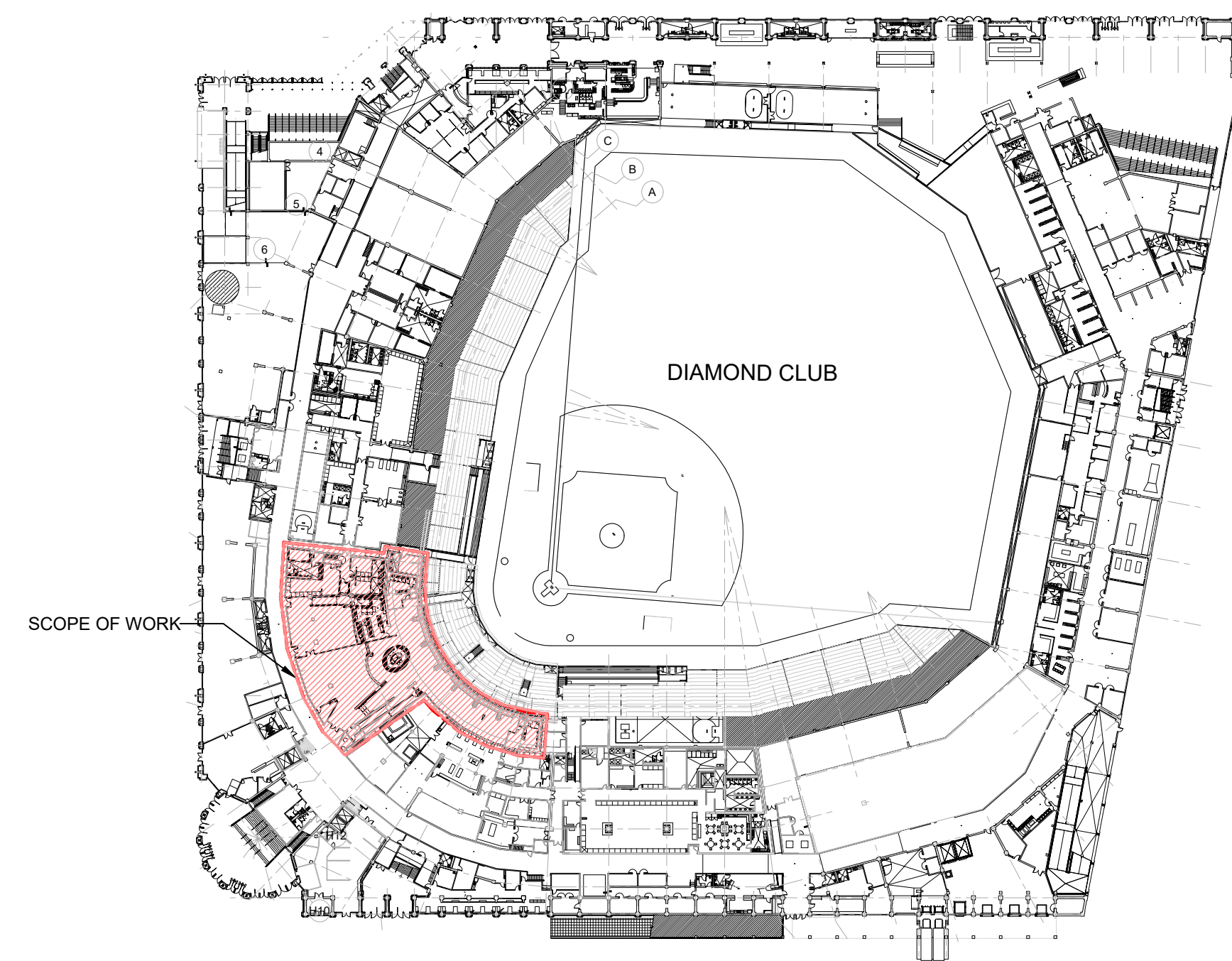
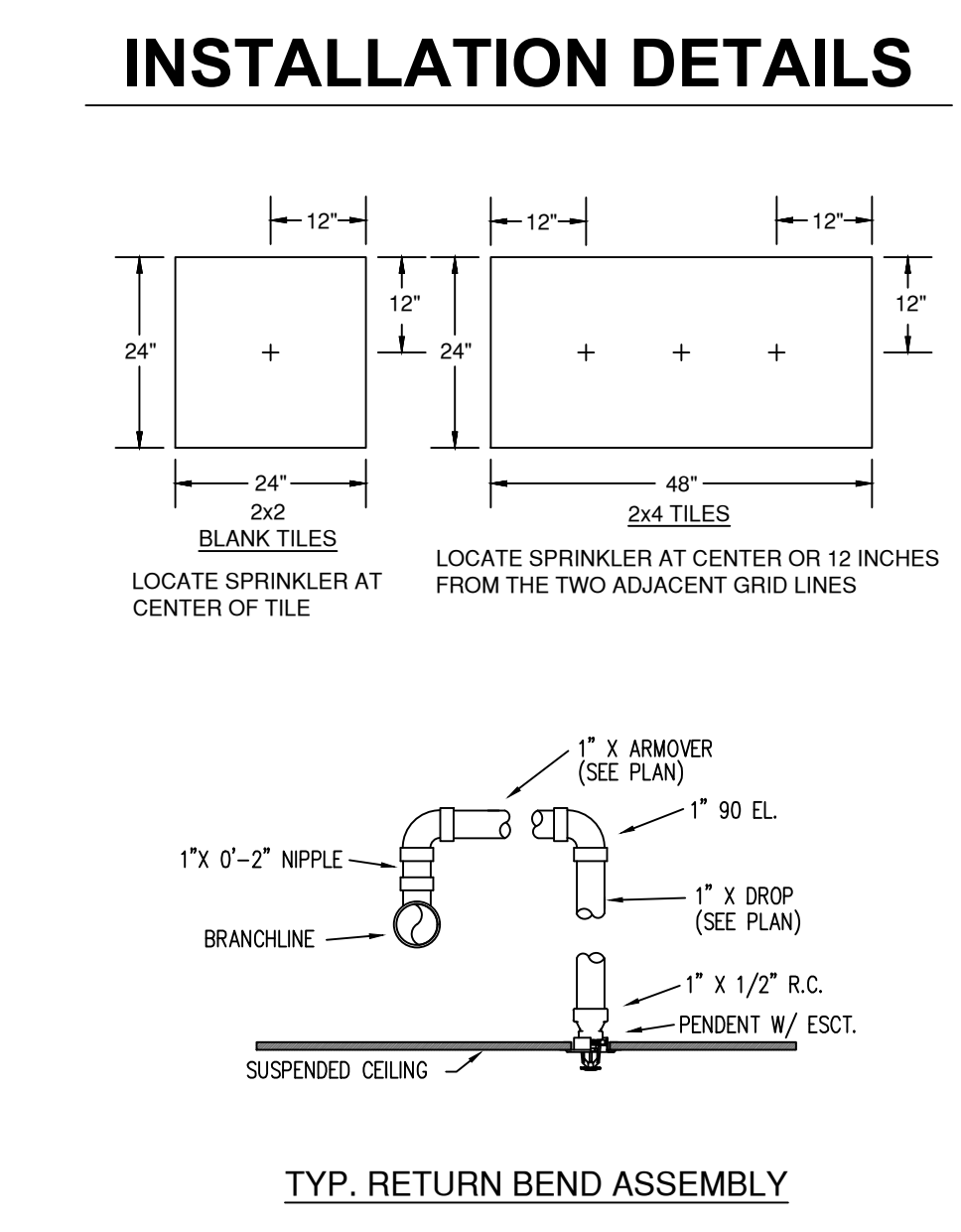
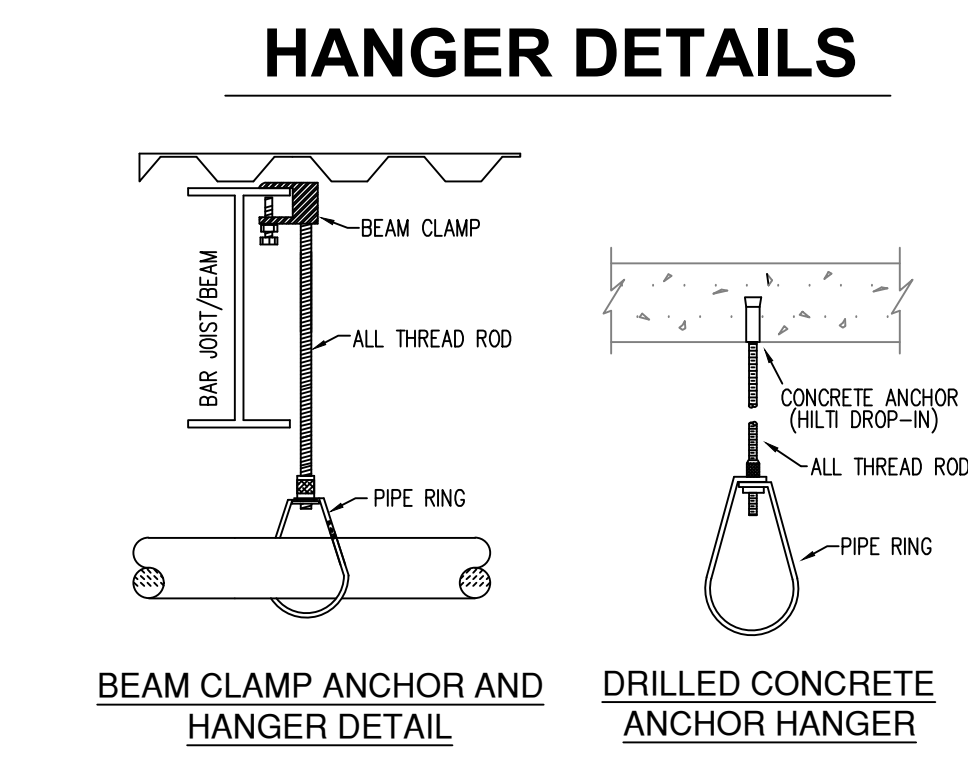


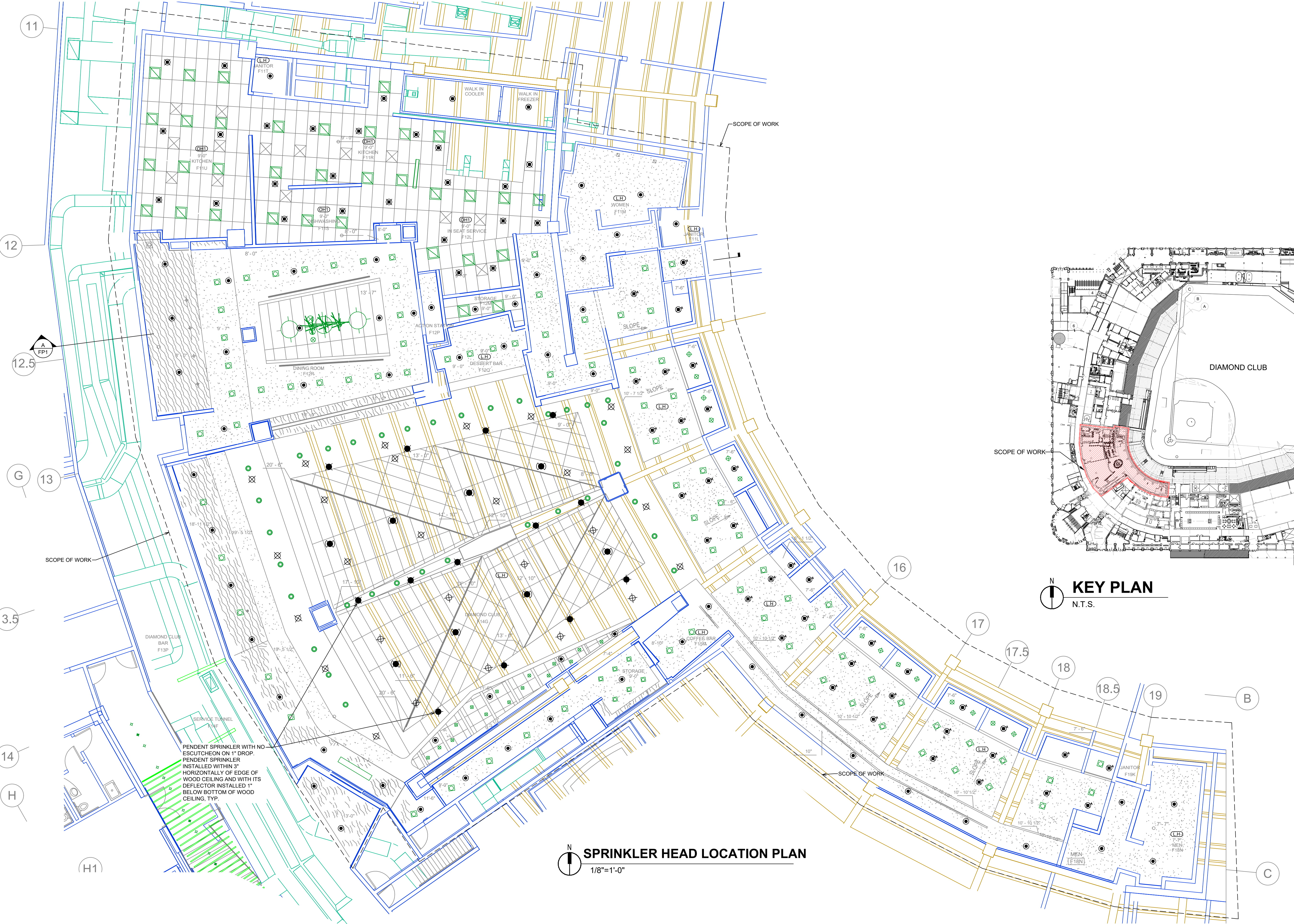
A BUILDING SECTION
1/8"=1'-0"

GENERAL NOTES
SPRINKLER AREAS
 AREA OF REMODEL = 13,500 SQ.FT.
INSTALLATION STANDARDS
 NFPA-13 (2019)
SPRINKLER PIPE TYPES
 NEW ARM-OVER PIPING TO BE BLACK SCHEDULE 40 PIPING WITH THREADED FITTINGS
DESIGN CRITERIA
 EXISTING RESTAURANT AREA IS BEING REMODELED AND OCCUPANCY IS NOT CHANGING. EXISTING OVERHEAD PIPING TO REMAIN WITH NEW ARM-OVERS PIPED TO NEW SPRINKLER HEAD LOCATIONS AS SHOWN ON THIS DRAWING. HYDRAULIC CALCULATIONS NOT PERFORMED FOR THIS TENANT IMPROVEMENT.
NOTES
 ALL MATERIAL TO BE NEW AND MEET U.L. STANDARDS
 HANGERS TO BE INSTALLED IN ACCORDANCE WITH NFPA 13 (2016)
TESTING
 PER NFPA 13 SECTION 25.2.1.4.1, THIS TENANT IMPROVEMENT PROJECT DOES NOT REQUIRE HYDROSTATIC TESTING.
SYMBOLS USED ON DRAWING
 (LH) ROOM HAZARD CLASSIFICATION (ALL ROOMS ARE CONSIDERED LIGHT HAZARD UNLESS NOTED)
 (EJ) HYDRAULIC CALCULATION JUNCTION POINT
 (CH) CEILING HEIGHT
 (R) ROOF ACCESS
 (S) SEISMIC BRACE
SCOPE OF WORK
 INSTALLING NEW SPRINKLER HEADS IN THE REMODEL AREA OF THE TENANT SPACE AS SHOWN ON THIS PLAN. EXISTING MAINS AND BRANCH LINES TO REMAIN WITH NEW 1" ARM-OVERS PIPED TO NEW SPRINKLER HEAD LOCATIONS.

SYMBOLS
 (ELEVATION) PIPE ELEVATION A.F.F.
 (LH) ROOM HAZARD CLASSIFICATION (ALL ROOMS ARE CONSIDERED LIGHT HAZARD UNLESS NOTED)
 (EJ) HYDRAULIC CALCULATION JUNCTION POINT
 (CH) CEILING HEIGHT
 (R) ROOF ACCESS
 (S) SEISMIC BRACE



KEY PLAN
N.T.S.



SPRINKLER HEAD LOCATION PLAN
1/8"=1'-0"

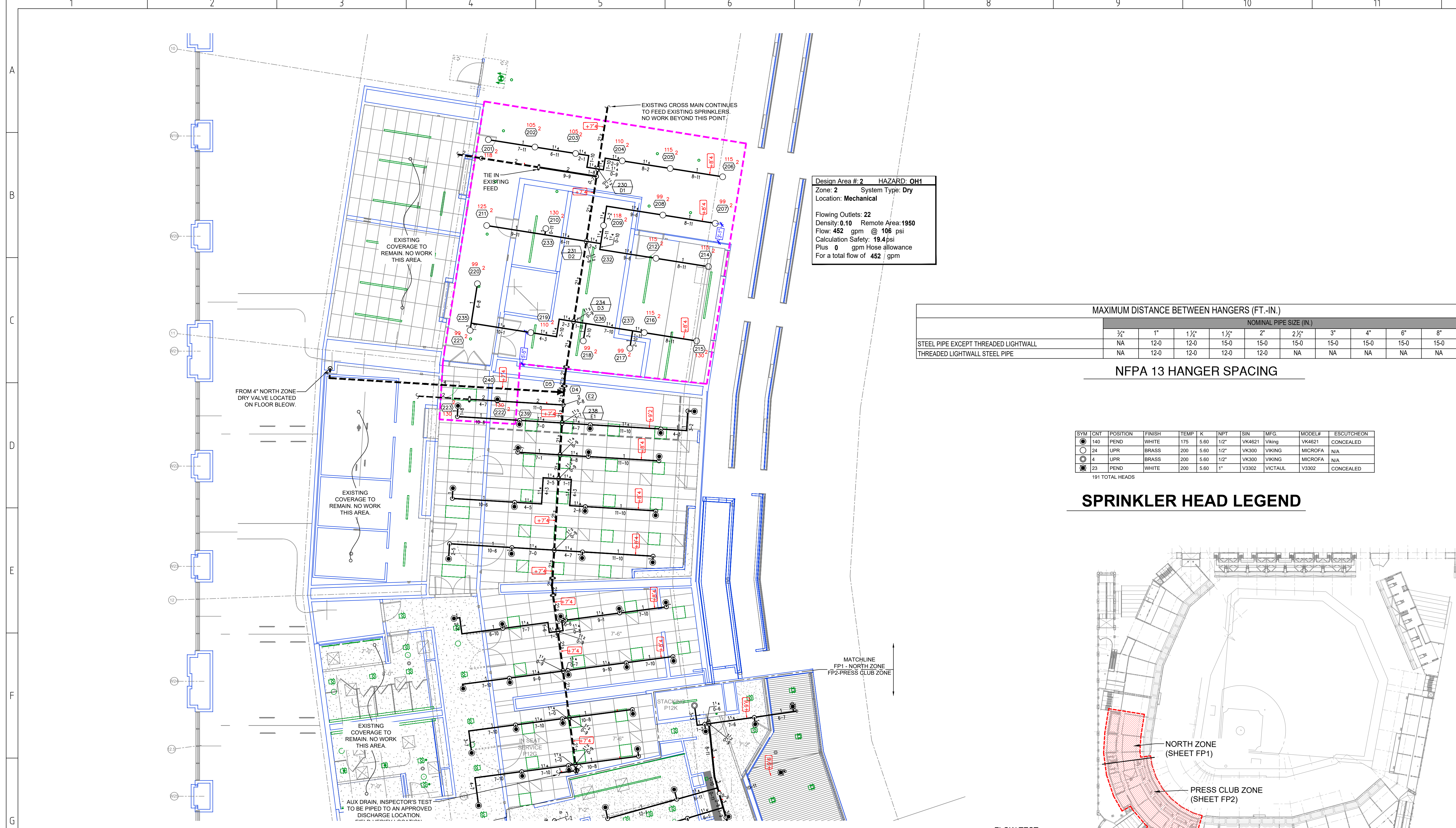
SYM	CNT	POSITION	FINISH	TEMP	K	NPT	SIN	MFG.	MODEL#	ESCUOTCHION
●	68	PEND	WHITE	155	5.60	1/2"	VK4621	VKING	VK4621	CONCEALED
⊗	27	UPR	BRASS	155	5.60	1/2"	VK300	VKING	MICROFA	N/A
⊙	25	PEND	WHITE	200	5.60	1"	VK176	VKING	VK4621	CONCEALED
⊙	36	PEND	BLACK	155	5.60	1"	VK176	VKING	VK4621	CONCEALED
⊙	2	DRY PEND	CHROME	155	5.60	1"	VK176	VKING	VK4621	STANDARD
⊙	13	PEND	BRASS	155	5.60	1"	VK176	VKING	VK4621	N/A
⊙	8	PEND	BLACK	155	5.60	1"	VK176	VKING	VK4621	CONCEALED
179 TOTAL HEADS										

SPRINKLER HEAD LEGEND

DIAMOND CLUB

1250 FIRST AVENUE SOUTH SEATTLE, WA 98134

1	8/13/22	SUBMITTAL	
		REVIEW	
DESIGNER	DS	SCALE	1/8"=1'-0"
FP-1			



Design Area # 2 HAZARD: OH1
 Zone: 2 System Type: Dry
 Location: Mechanical

Flowing Outlets: 22
 Density: 0.10 Remote Area: 1950
 Flow: 452 gpm @ 106 psi
 Calculation Safety: 19.4 psi
 Plus: 0 gpm Hose allowance
 For a total flow of 452 gpm

MAXIMUM DISTANCE BETWEEN HANGERS (FT.-IN.)

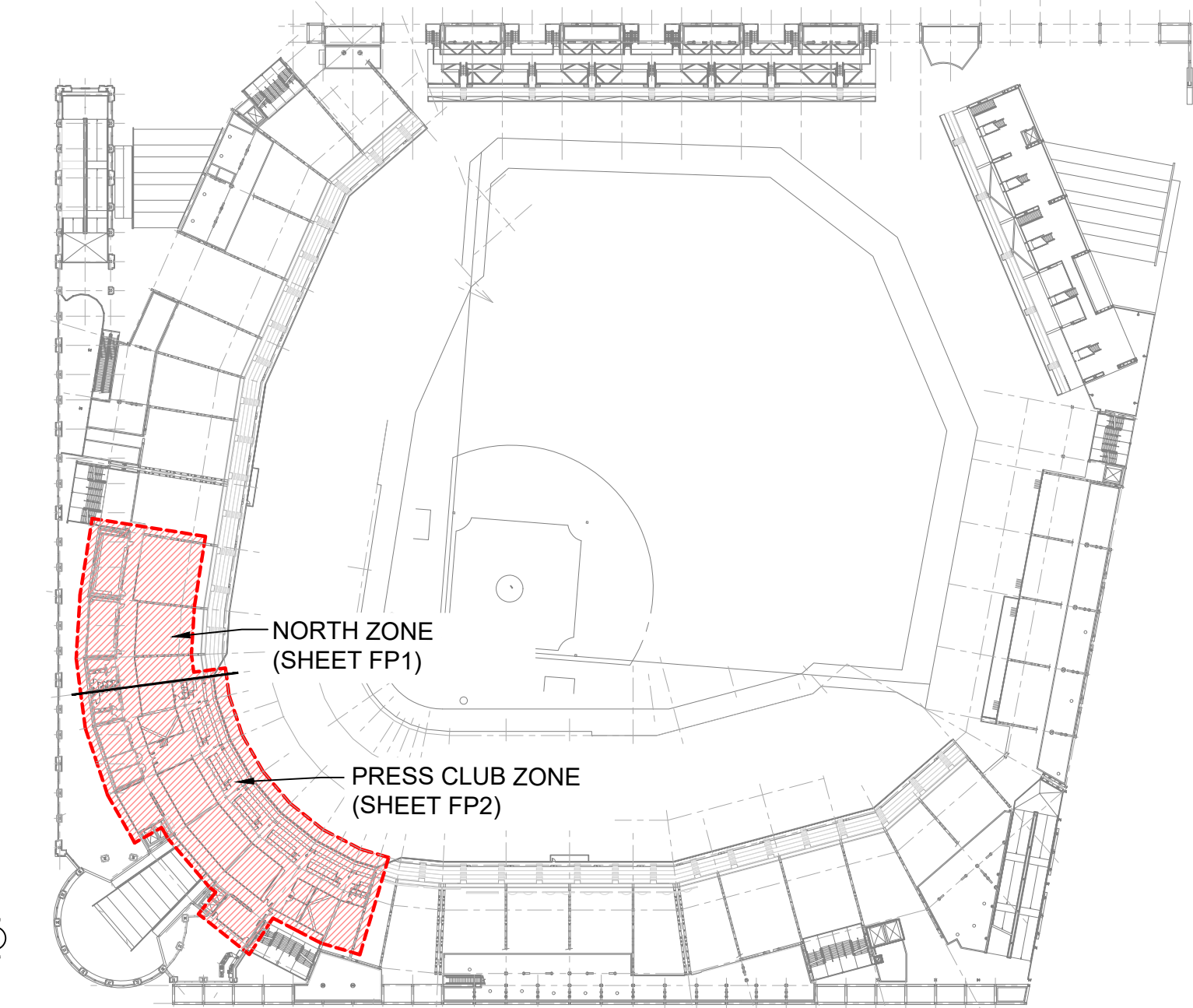
STEEL PIPE EXCEPT THREADED LIGHTWALL THREADED LIGHTWALL STEEL PIPE	NOMINAL PIPE SIZE (IN.)								
	3/4"	1"	1 1/2"	1 3/4"	2"	2 1/2"	3"	4"	
STEEL PIPE EXCEPT THREADED LIGHTWALL	NA	12-0	12-0	15-0	15-0	15-0	15-0	15-0	15-0
THREADED LIGHTWALL STEEL PIPE	NA	12-0	12-0	12-0	12-0	NA	NA	NA	NA

NFPA 13 HANGER SPACING

SPRINKLER HEAD LEGEND

SYM	UNT	POSITION	FINISH	TEMP	K	NP	SIN	MFG.	MODEL#	ESCUTO/CHCKN
140	PEND		WHITE	175	5.80	1/2"	VR4821	Viking	VR4821	CONCEALED
24	LPR		BRASS	200	5.80	1/2"	VR300	Viking	MICROFA	N/A
4	LPR		BRASS	200	5.80	1/2"	VR300	Viking	MICROFA	N/A
23	PEND		WHITE	200	5.80	1"	V3302	VICTAUL	V3302	CONCEALED

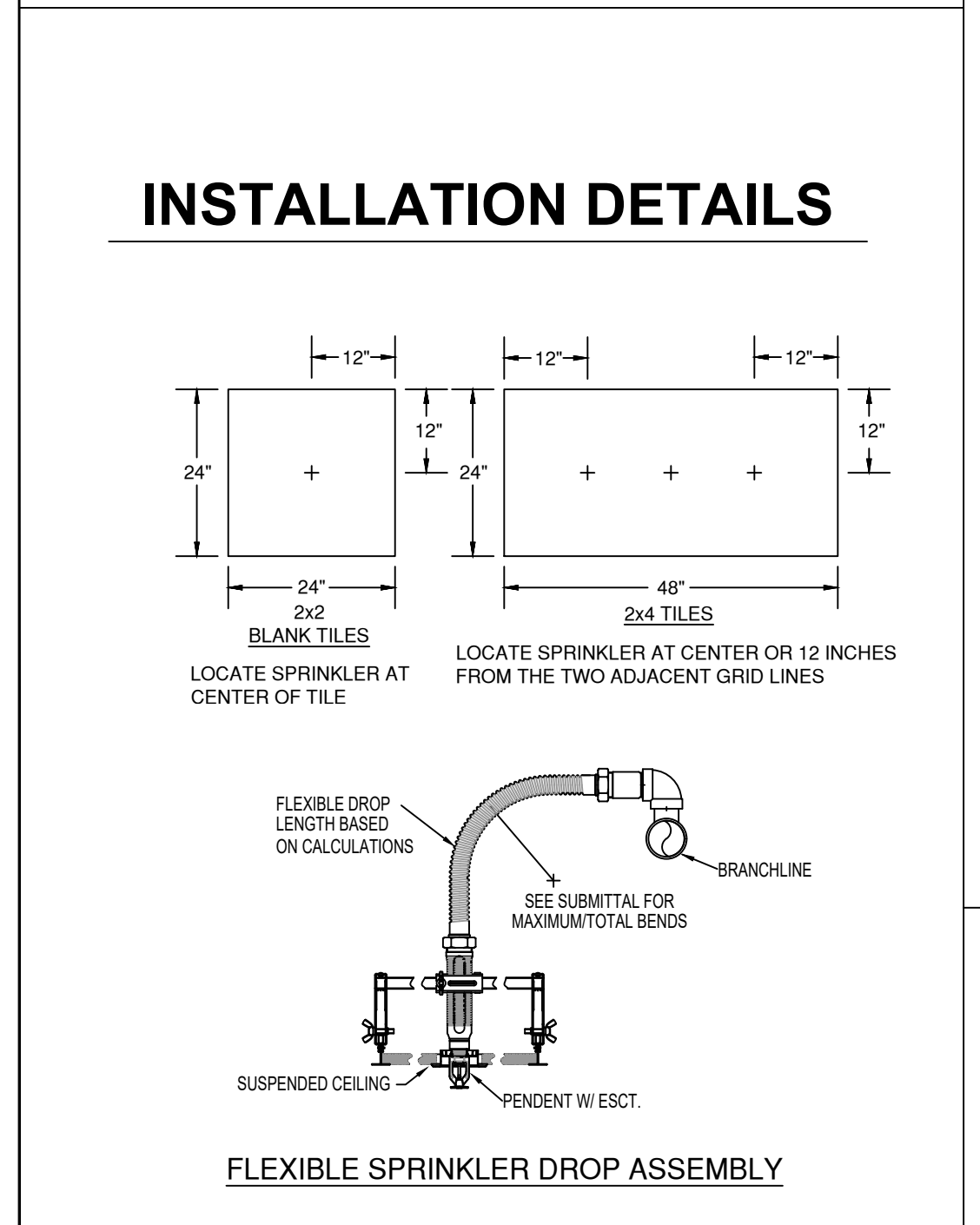
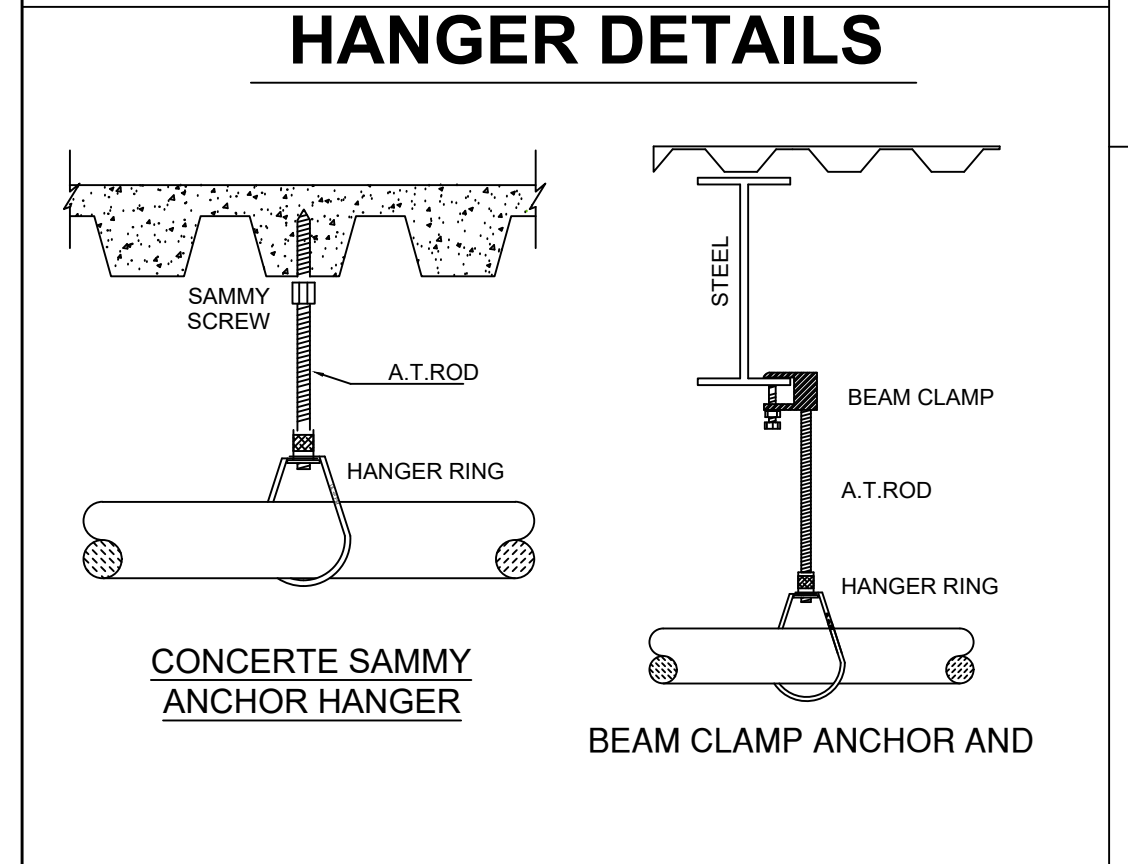
191 TOTAL HEADS



FLOW TEST
 HYDRANT #1296
 STATIC = 127 PSI
 RESID = 20 PSI
 FLOW = 4380 GPM

FIRE SPRINKLER PLAN-AREA A
 1/8"=1'-0"

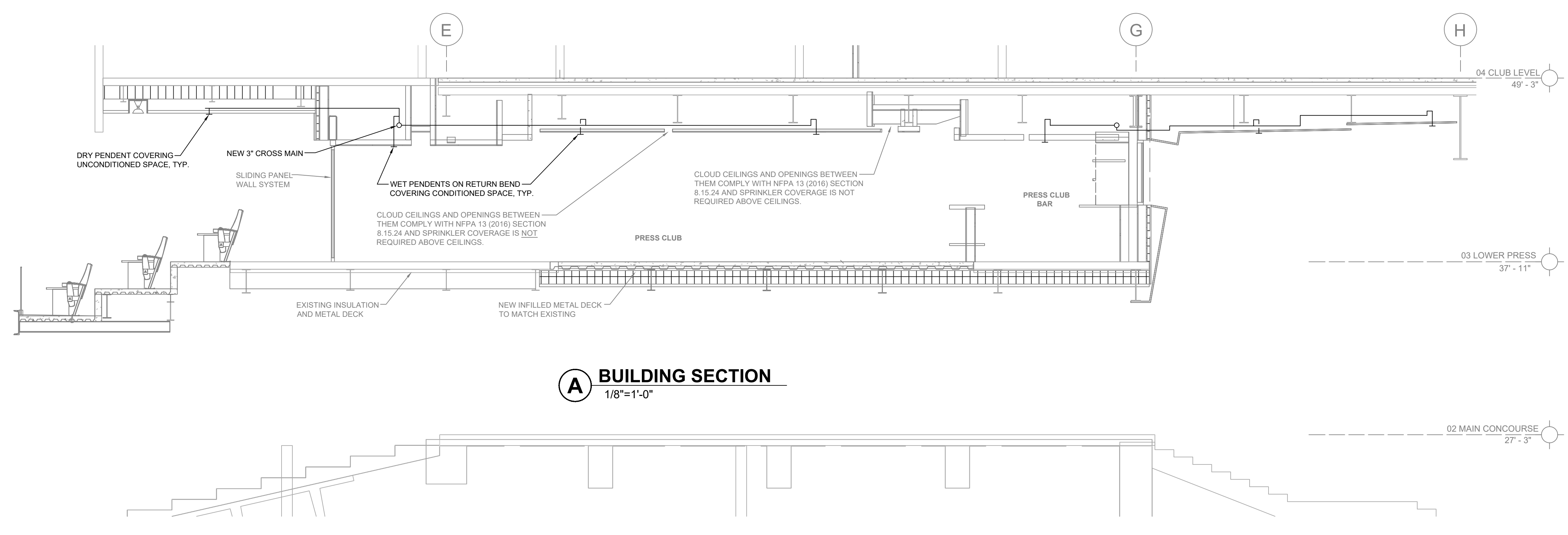
- GENERAL NOTES**
- INTERNATIONAL BUILDING CODE (2015)
 - OCCUPANCY/ASSEMBLY TYPE A-4, A-2, B, M, S
 - TYPE OF CONSTRUCTION: I & II
 - SPRINKLERED AREAS = 20,300 SQ. FT. (APPROXIMATE - SEE ARCHITECTURAL PLANS FOR ACTUAL)
 - INSTALLATION STANDARDS:
 SPRINKLER SYSTEM DESIGNED AND INSTALLED PER NFPA-13 (2016)
 - SPRINKLER PIPE TYPES:
 -DRY-
 2.1. 1" - 1 1/2" BRANCH LINES TO BE BLK SCHEDULE 40 PIPING WITH THREADED FITTINGS
 2.2. 2" = 3" MAINS TO BE BLK SCHEDULE 10 PIPING WITH GROOVED FITTINGS
 - DESIGN CRITERIA
 3.1. REMOTE AREA REDUCTIONS HAVE BEEN TAKEN WHERE APPLICABLE PER NFPA 13 SEC. 11.2.3.2.3
 - NOTES:
 4.1. ALL MATERIAL TO BE NEW AND MEET U.L. STANDARDS
 4.2. HANGERS TO BE INSTALLED IN ACCORDANCE WITH NFPA 13 (2016) - SEE PLAN FOR HANGING REQUIREMENTS
 - SCOPE OF WORK:
 5.1. RE-WORK EXISTING PIPING AS NECESSARY AND INSTALL NEW PIPING AND SPRINKLERS TO PROVIDE SPRINKLER COVERAGE FOR THE REMODELED PRESS CLUB. ALL SPRINKLERS SYSTEMS ARE DRY TYPE.



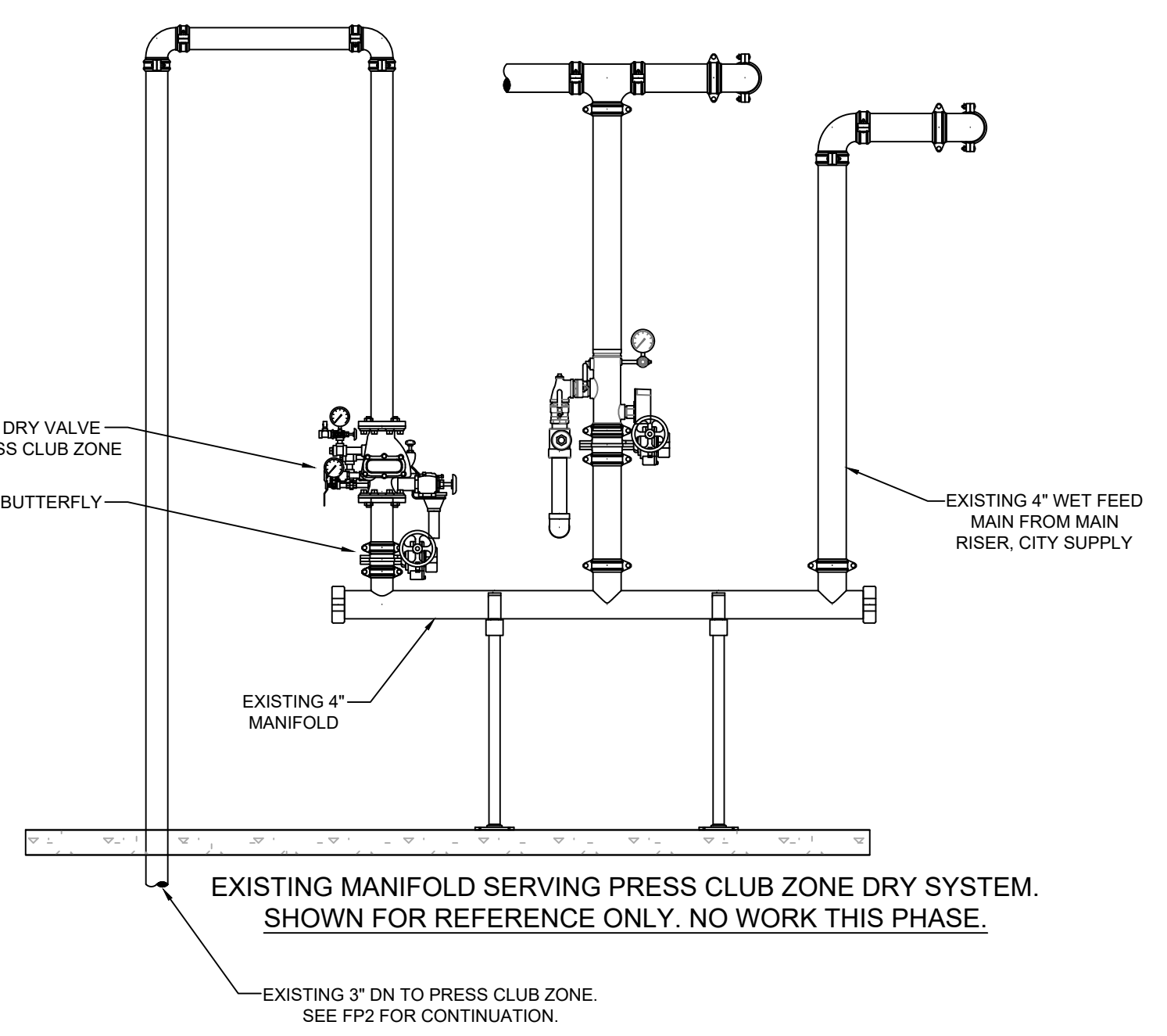
**T-MOBILE PARK
 PRESS CLUB**

1250 FIRST AVENUE SOUTH, SEATTLE, WA 98134

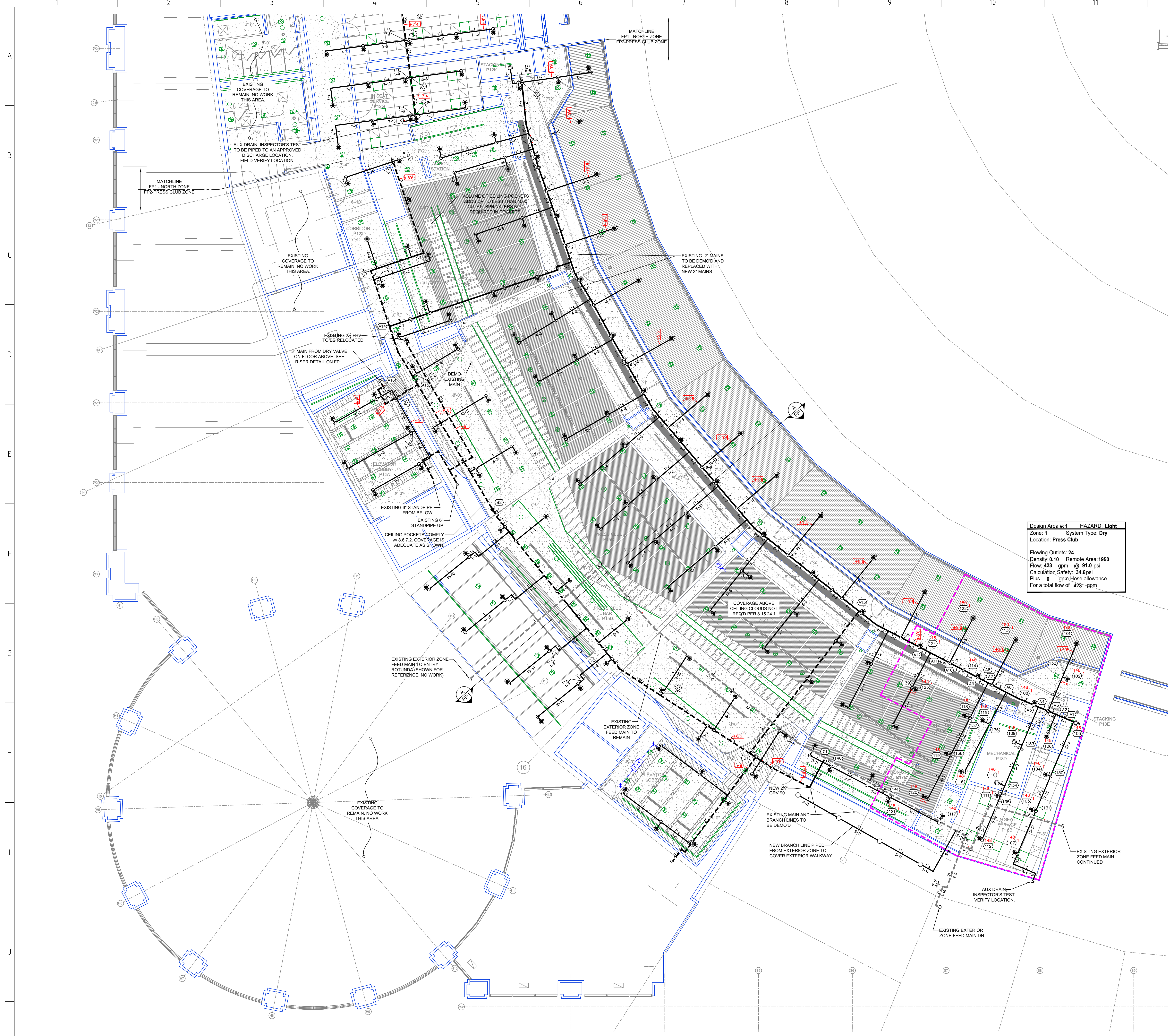
KEY PLAN



A BUILDING SECTION
 1/8"=1'-0"



1 RISER DETAIL
 1/2"=1'-0"



Design Area # 1 HAZARD: Light
 Zone: 1 System Type: Dry
 Location: Press Club
 Flowing Outlets: 24
 Density: 0.10 Remote Area: 1950
 Flow: 423 gpm @ 91.0 psi
 Calculation Safety: 34.6 psi
 Plus 0 gpm Hose allowance
 For a total flow of 423 gpm

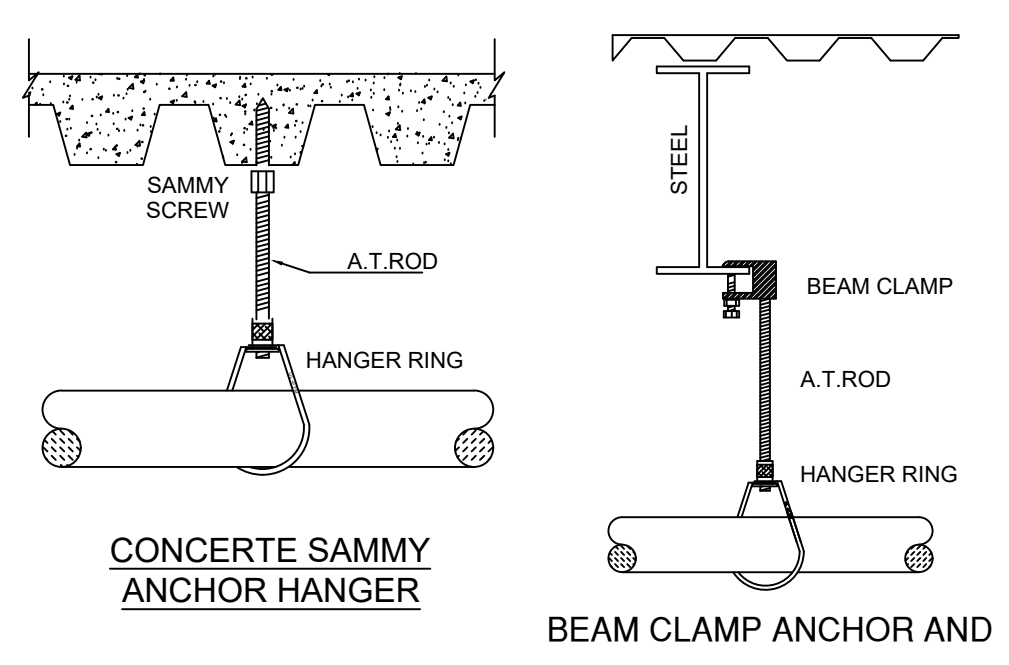
GENERAL NOTES

- INTERNATIONAL BUILDING CODE (2015)
 - OCCUPANCY/ASSEMBLY TYPE A-4, A-2, B, M, S
 - TYPE OF CONSTRUCTION I & II
 - SPRINKLERED AREAS = 20,300 SQ. FT. (APPROXIMATE - SEE ARCHITECTURAL PLANS FOR ACTUAL)
 - INSTALLATION STANDARDS:
 SPRINKLER SYSTEM DESIGNED AND INSTALLED PER NFPA-13 (2016)
- SPRINKLER PIPE TYPES:
 -DRY-
 - 1" - 1 1/2" BRANCH LINES TO BE BLK SCHEDULE 40 PIPING WITH THREADED FITTINGS
 - 2" = 3" MAINS TO BE BLK SCHEDULE 10 PIPING WITH GROOVED FITTINGS
- DESIGN CRITERIA
 - REMOTE AREA REDUCTIONS HAVE BEEN TAKEN WHERE APPLICABLE PER NFPA 13 SEC. 11.2.3.2.3
- NOTES:
 - ALL MATERIAL TO BE NEW AND MEET U.L. STANDARDS
 - HANGERS TO BE INSTALLED IN ACCORDANCE WITH NFPA 13 (2016) - SEE PLAN FOR HANGING REQUIREMENTS
- SCOPE OF WORK:
 - RE-WORK EXISTING PIPING AS NECESSARY AND INSTALL NEW PIPING AND SPRINKLERS TO PROVIDE SPRINKLER COVERAGE FOR THE REMODELED PRESS CLUB. ALL SPRINKLERS SYSTEMS ARE DRY TYPE.

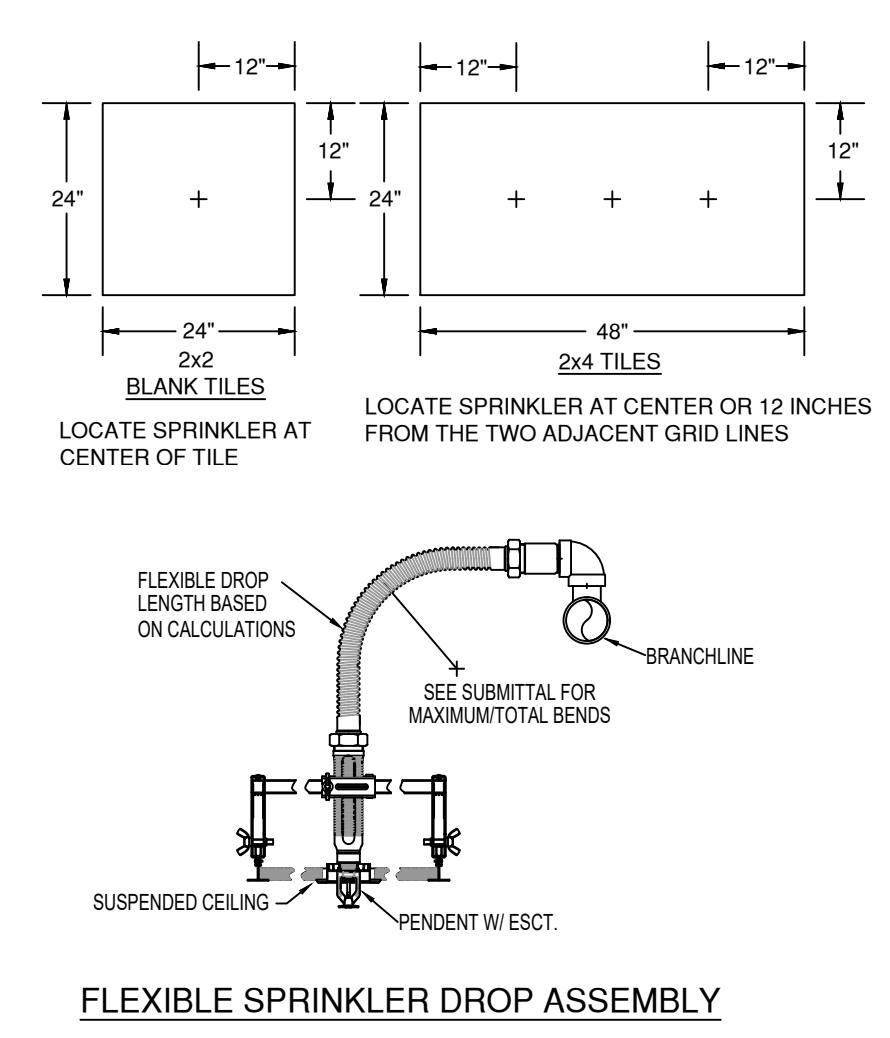
SYMBOLS

- 9.9' PIPE ELEVATION A.F.F.
- (OH) ROOM HAZARD CLASSIFICATION (ALL ROOMS ARE CONSIDERED LIGHT HAZARD UNLESS NOTED)
- (C) HYDRAULIC CALCULATION JUNCTION POINT
- 10'0" CEILING HEIGHT

HANGER DETAILS



INSTALLATION DETAILS



**T-MOBILE PARK
PRESS CLUB**

1250 FIRST AVE SOUTH, SEATTLE, WA 98134

KEY PLAN

FIRE SPRINKLER PLAN-AREA B
 1/8"=1'-0"