

**MANUAL WET STANDPIPE**

LOCATION: STAIR #2 & 3  
REQUIRED FLOW: 750 GPM  
OUTLET PSI: 100  
REQUIRED INLET PSI: 173

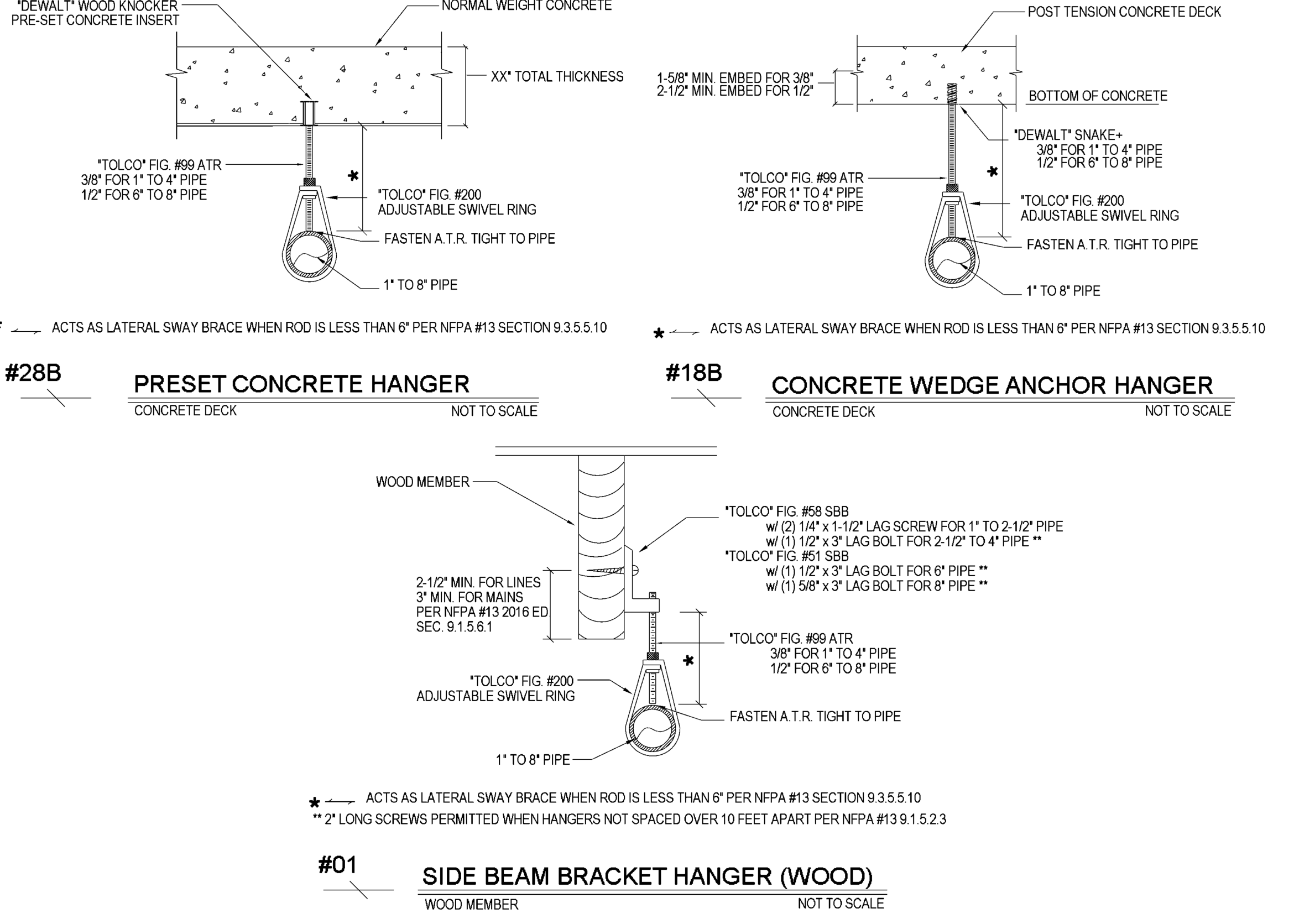
**STANDPIPE CALC**

OCCUPANCY CLASSIFICATION	Standpipe Calculation - Class I
TOTAL WATER REQUIRED	750.00
TOTAL PRESSURE REQUIRED	172.158
SAFETY MARGIN (psi)	+0.842 (0.5%)

NOTE: STANDPIPE CALC INCLUDES THREE 2-1/2" HOSE VALVES EACH W/ A MIN. 100 PSI @ 250 GPM. TWO HOSE VALVES AT ROOF LEVEL IN STAIR #2 AND ONE AT LEVEL 5 IN STAIR #3.

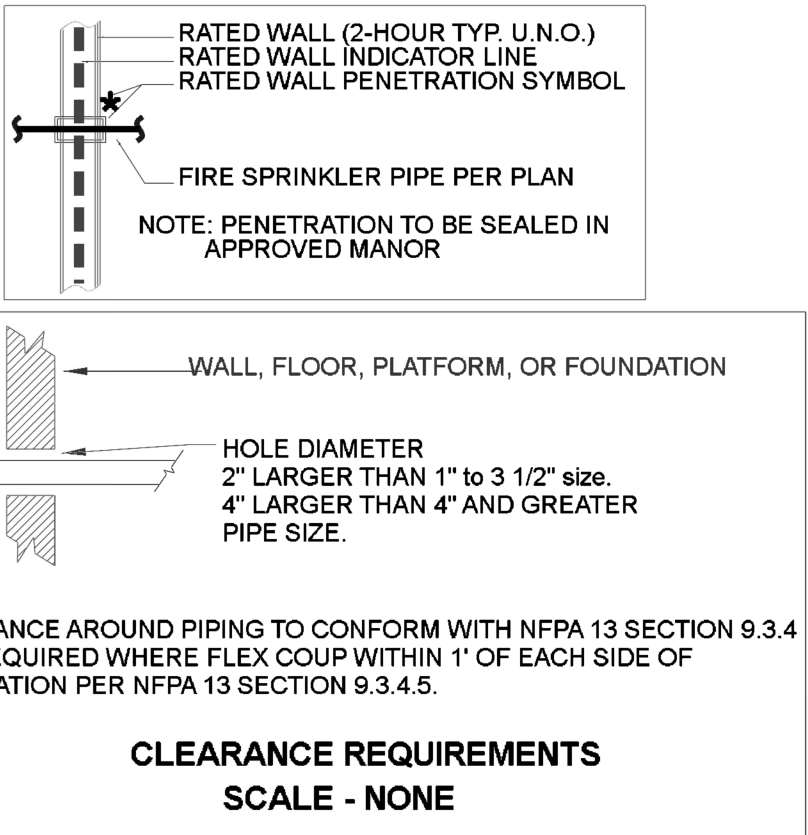
**MAXIMUM DISTANCE BETWEEN HANGERS (FT.-IN.)**

	3/4"	1"	1 1/4"	1 1/2"	2"	2 1/2"	3"	4"	6"	8"
STEEL PIPE EXCEPT THREADED LIGHTWALL	NA	12-0	12-0	15-0	15-0	15-0	15-0	15-0	15-0	15-0
THREADED LIGHTWALL STEEL PIPE	NA	12-0	12-0	12-0	12-0	NA	NA	NA	NA	NA



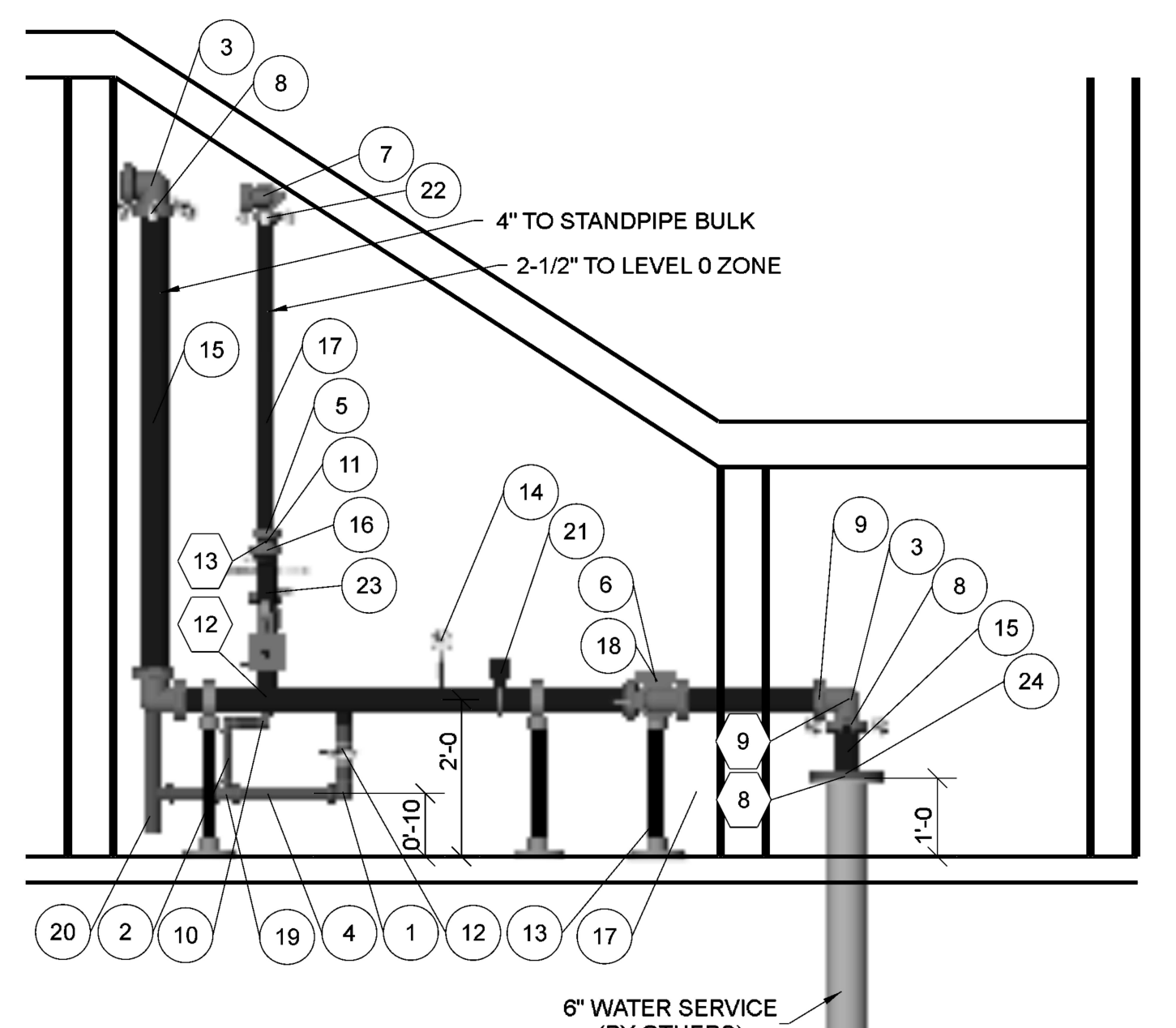
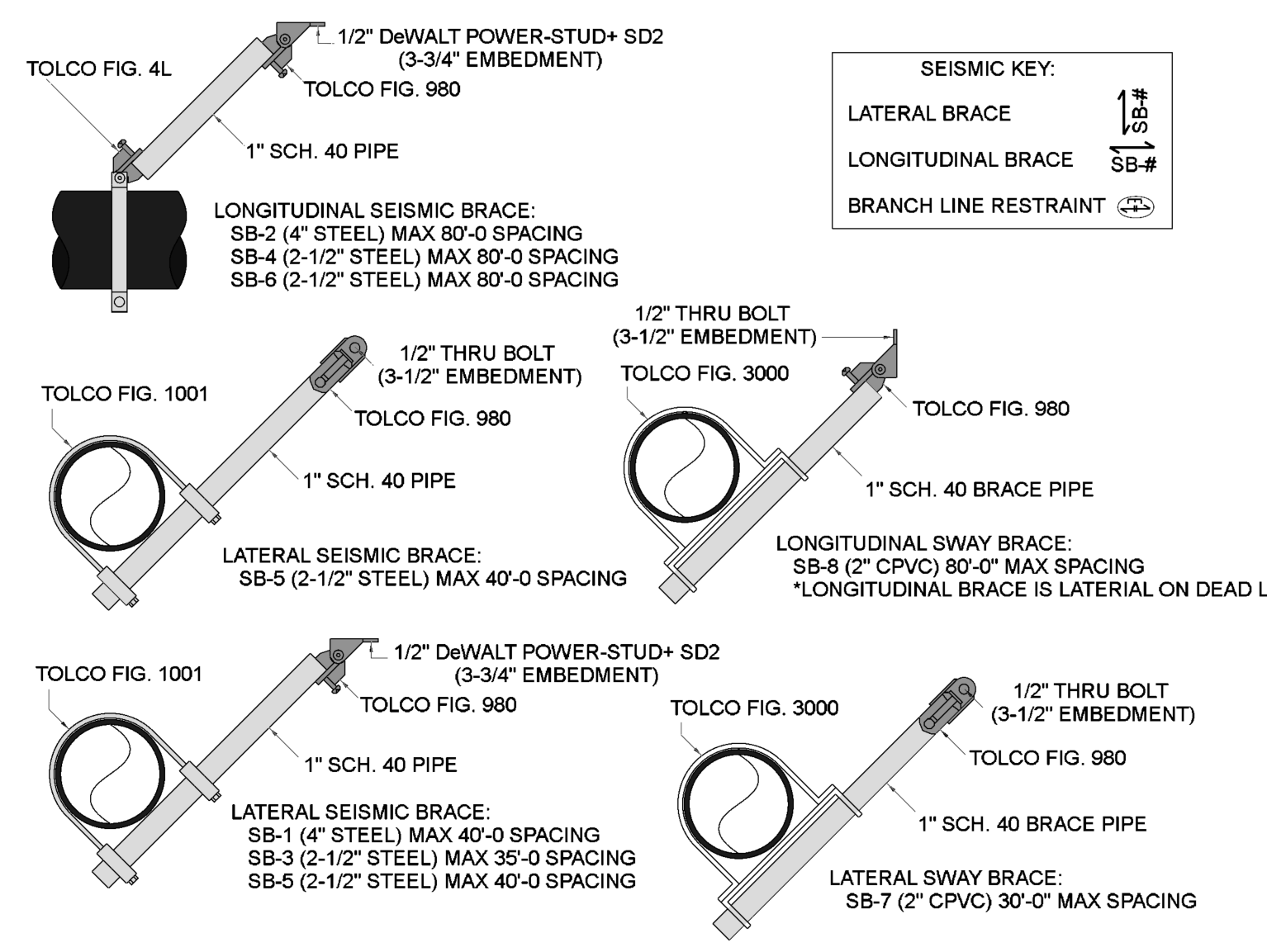
**\*NSF INTERNATIONAL APPROVED FOR USE WITH POTABLE WATER**

CPVC PIPE (SDR 13.5 ASTM F 442)	Table 1 Max. Support Spacing Distance End Line Sprinkler Head Drop Elbow	Table 2 Max. Support Spacing Distance In-Line Sprinkler Head Drop Tee			
Nominal Size (inches)	Max. Spacing (feet)	Pipe Size (inches)	System Pressure (psi)	Pipe Size (inches)	System Pressure (psi)
3/4"	5.0' (1.7')	3/4"	<100	3/4"	4.0' - 3.0'
1"	6.0' (1.8')	1"	120	1"	5.0' - 4.0'
1 1/4"	6.5' (2.0')	1 1/4"	160	1 1/4"	6.0' - 5.0'
1 1/2"	7.0' (2.1')	1 1/2"	240	1 1/2"	7.0' - 7.0'
2"	8.0' (2.4')				
2 1/2"	9.0' (2.7')				
3"	10.0' (3.0')				



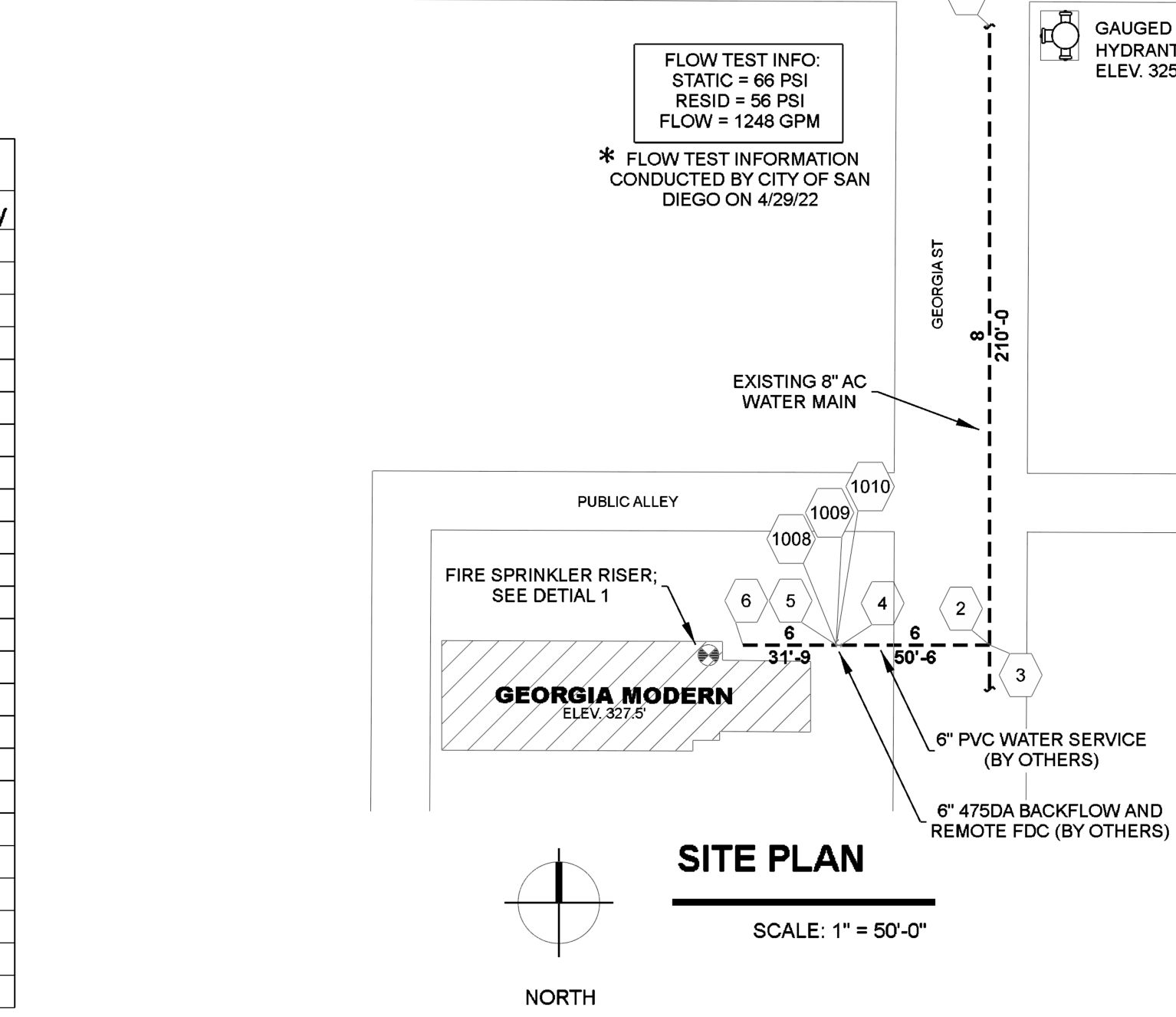
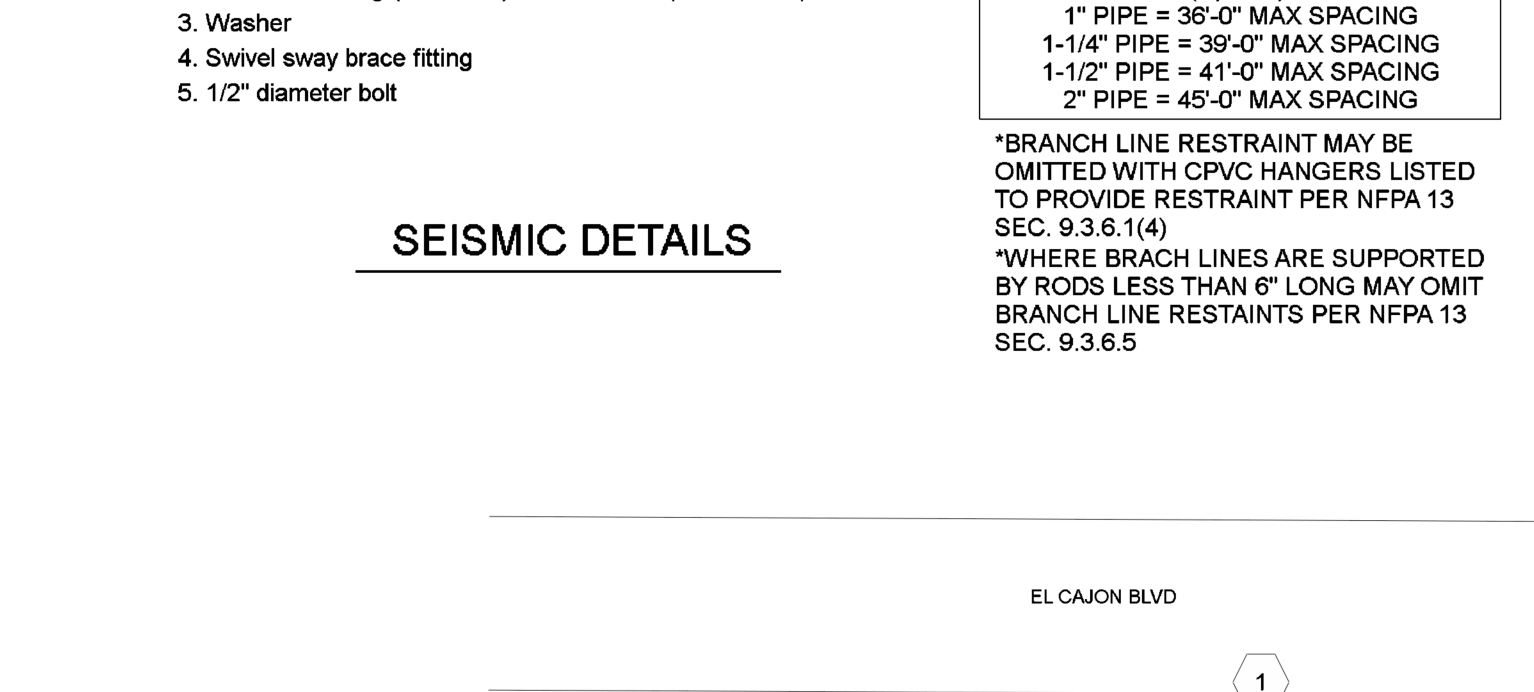
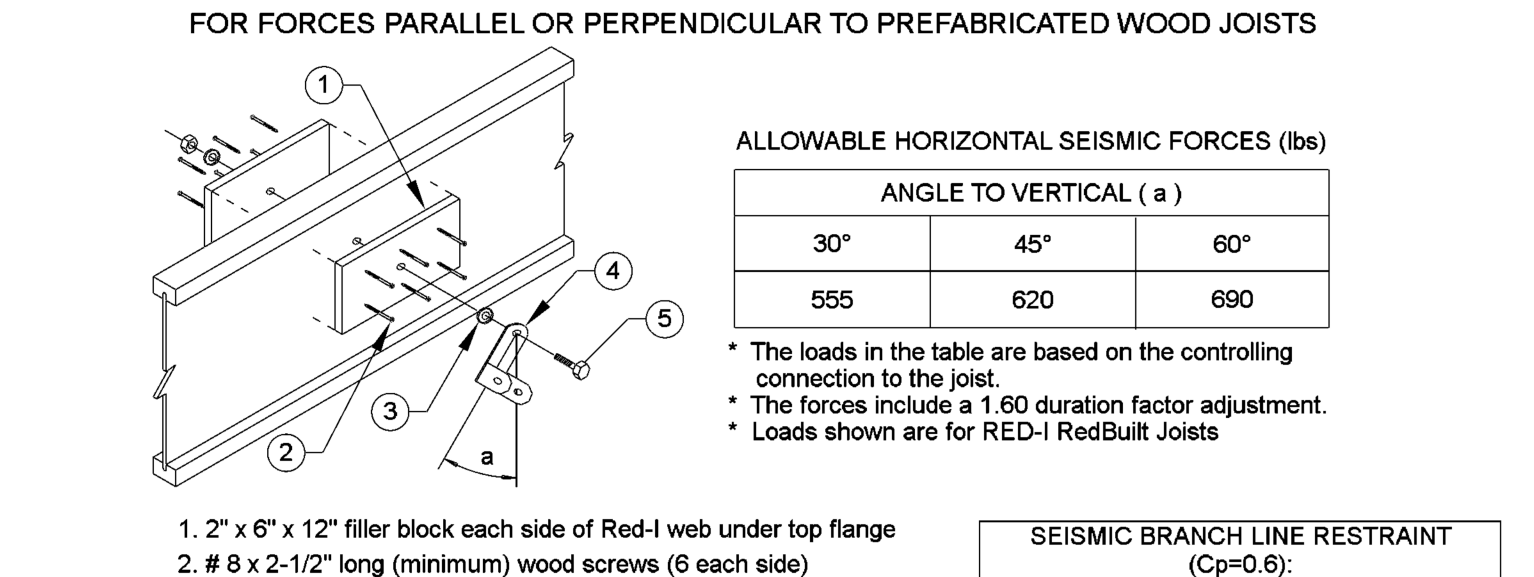
**GENERAL INFORMATION**

- CALIFORNIA BUILDING CODE (2019)
  - OCCUPANCY TYPE B, R-2, S-1, U (PRIVATE PARKING GARAGE)
  - TYPE OF CONSTRUCTION (A LEVEL 0), IIIA (LEVELS 1-5)
  - SPRINKLER AREAS (APPROXIMATE - SEE ARCHITECTURAL PLANS FOR ACTUAL)
- DESIGN & INSTALLATION STANDARDS: NFPA-13 (2016), NFPA-14 (2016)
- SPRINKLER PIPE TYPES:
  - WET
  - 1" PIPE TO BE BLK STEEL MEGA-THREAD W/ THREADED FITTINGS
  - 2" THROUGH 4" MAINS & BRANCH LINES TO BE BLK STEEL MEGA-FLOW W/ GROOVED FITTINGS
  - 2" THROUGH 2" MAINS & BRANCH LINES TO BE CPVC W/ CEMENTED FITTINGS
  - 2" MAINS & BRANCH LINES TO BE RGL-GROOVED BLK STEEL OR CEMENTED CPVC
  - 2" AND LARGER BLK STEEL TO USE GROOVED SHORT RADIUS FITTINGS
- DESIGN CRITERIA:
  - LIGHT HAZARD AREAS DESIGNED TO 0.10 GPM/S.F. OVER 1500 S.F.
  - ORDINARY HAZARD GROUP I AREAS DESIGNED TO 0.15 GPM/S.F. OVER 1500 S.F.
  - RESIDENTIAL AREAS TO INCLUDE 4 MOST DEMANDING HEADS AT MANUFACTURER SPECIFIED FLOW
- NOTES:
  - ALL MATERIAL TO BE NEW AND MEET U.L. STANDARDS
  - HANGERS TO BE INSTALLED IN ACCORDANCE WITH NFPA 13 - SEE PLAN FOR HANGING
- SYMBOLS USED ON DRAWINGS:
  - PIPE ELEVATION ABOVE FINISH FLOOR
  - PIPE ELEVATION BELOW TOP OF STEEL
  - ROOM HAZARD CLASSIFICATION (ALL ROOMS ARE CONSIDERED LIGHT HAZARD U.N.O.)
  - HYDRAULIC CALCULATION JUNCTION POINT
  - CEILING HEIGHT
  - FIRE RATED WALL
  - BLACK STEEL PIPE
  - CPVC PIPE
- SCOPE OF WORK:
  - INSTALL A COMPLETE SIX ZONE WET FIRE SPRINKLER AND MANUAL WET STANDPIPE SYSTEM TO COVER ALL AREAS OF BUILDING
  - BUILDING WILL BE ZONED PER FLOOR; COMBINED STANDPIPE IN STAIR #2 WITH CONTROL VALVES AT MAIN FLOOR LANDINGS
  - ALL AREAS OF THE BUILDING TO BE INSTALLED AND COVERED IN ACCORDANCE WITH THE LOCAL AUTHORITY HAVING JURISDICTION AND PER NFPA 13



**RISER DETAIL LEGEND**

Key Note	Size	Description	Quantity
1	2	Threaded 90° Elbow, DI	2
2	1 1/4"	Pipe, Mega-Thread	3
3	4	Grooved Short Radius 90° Elbow Org	5
4	2	Pipe, Mega-Thread	4
5	2 1/2"	Grooved Rigid Coupling Org	9
6	4	Valve, G-G Check	1
7	2 1/2"	Grooved Short Radius 90° Elbow Org	5
8	4	Grooved Flexible Coupling	2
9	4	Grooved Rigid Coupling Org	10
10	1 1/4"	Threaded 90° Elbow, DI	2
11	3 x 2 1/2"	Grooved Concentric Reducer, DI, Org	1
12	2	Valve, T-T Ball	1
13	4	Adjustable Pipe Stand	3
14	1/2"	Gauge	1
15	4	Pipe, Mega-Flow	4
16	2 1/2"	Grooved Rigid Coupling Org	2
17	2 1/2"	Pipe, Mega-Flow	4
18	4	Valve, G-G Butterfly	1
19	2 x 1	Threaded Reducing Tee	1
20	2 1/2"	Gang Drain To 4" Hub Drain (By Others)	1
21	4 x 2	Waterflow Detector	1
22	2 1/2"	Grooved Flexible Coupling	2
23	3	Victaulic UMC w/ Butterfly Valve, Check Valve, Flow Switch, Pressure Gauge, & Test/Drain	1
24	4 x 11	Flange, Slip Reducing Weld	1



**SPRINKLER SYSTEM - GENERAL INFORMATION FOR**

Georgia Modern  
4222 Georgia St  
San Diego, CA 92103

High piled storage: Yes  No   
Rack storage: Yes  No   
Commodity class:   
Max. storage ht.: ft.   
Aisle width (min.): ft.   
Encapsulation: Yes  No   
Solid shelving: Yes  No   
Flammable: Yes  No   
Combustible liquids: Yes  No   
Other storage: Yes  No   
Hazardous materials: Yes  No   
Idle pallets: Yes  No   
Antifreeze systems: Yes  No   
Dry or aux systems: Yes  No   
Location:   
Date:   
Flow test data:   
Static: 66 psi  
Resid.: 56 psi  
Flow: 1248 gpm  
Pilot: psi  
Date: 4/29/2022  
Location: GEORGIA ST & EL CAJON BLVD  
Original main drain test results:   
Static: psi  
Residual: psi

**HYDRAULIC - SYSTEM**

This Building is Protected By A Hydraulically Designed Automatic Sprinkler System

Date Installed:   
Location:   
Area / System:   
Sprinklers to Discharge:   
Basis of Design:   
Density:   
Area of Discharge:   
System Demand at Base of Riser:   
GPM Discharge:   
Residual Pressure:   
Hose Allowance:   
Occupancy Classification:   
Commodity Classification:   
Maximum Storage Height:   
Print #: FP1  
Date: 7/13/2022

**FIRE SPRINKLER SYSTEM - SPRINKLER INFORMATION**

SIN	ORIFICE	TEMP	ORIENTATION	K	RESPONSE	TOTAL
V2704	-	200°F	Upright	5.6	Quick	22
V2708	-	200°F	Pendent	5.6	Quick	5

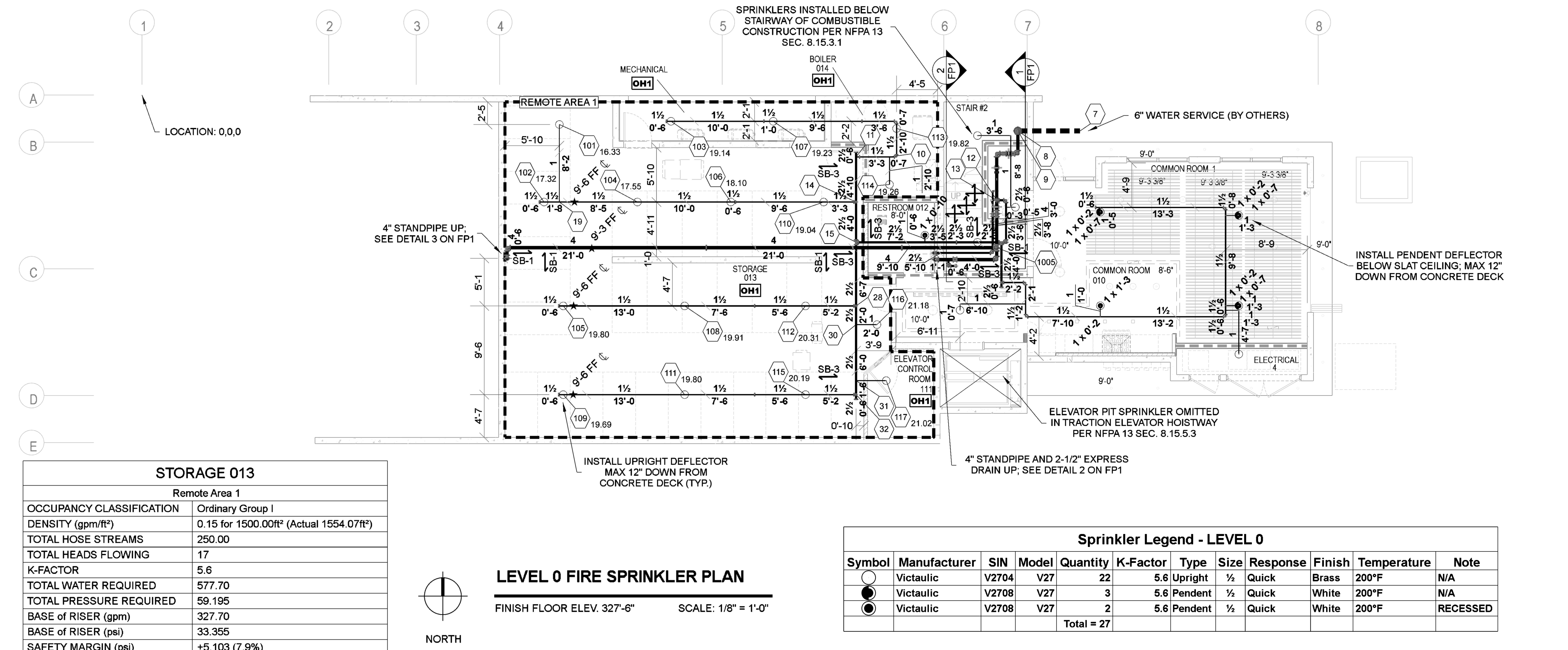
HYDRAULICALLY MOST DEMANDING SPRINKLER

MAX SPACING	117	FT
MINIMUM PRESSURE	9.92	PSI
DISCHARGE FLOW RATE	17.55	GPM

SYSTEM DEMAND AT WATER SUPPLY SOURCE

GPM DISCHARGE	577.70
RESIDUAL PRESSURE	59.19

DESIGN PER NFPA 13 (ed. 2016)



**Sprinkler Legend - ENTIRE PROJECT**

Symbol	Manufacturer	SIN	Model	Quantity	K-Factor	Type	Size	Response	Finish	Temperature	Note
○	Victaulic	V2704	V27	136	4.9	Pendent	1/2"	Quick	White	155°F	RECESSED
●	Victaulic	V2704	V27	45	5.6	Upright	1/2"	Quick	White	200°F	N/A
●	Victaulic	V2708	V27	1	5.6	Pendent	1/2"	Quick	White	200°F	N/A
●	Victaulic	V2708	V27	1	5.6	Pendent	1/2"	Quick	White	200°F	RECESSED
Total = 183											

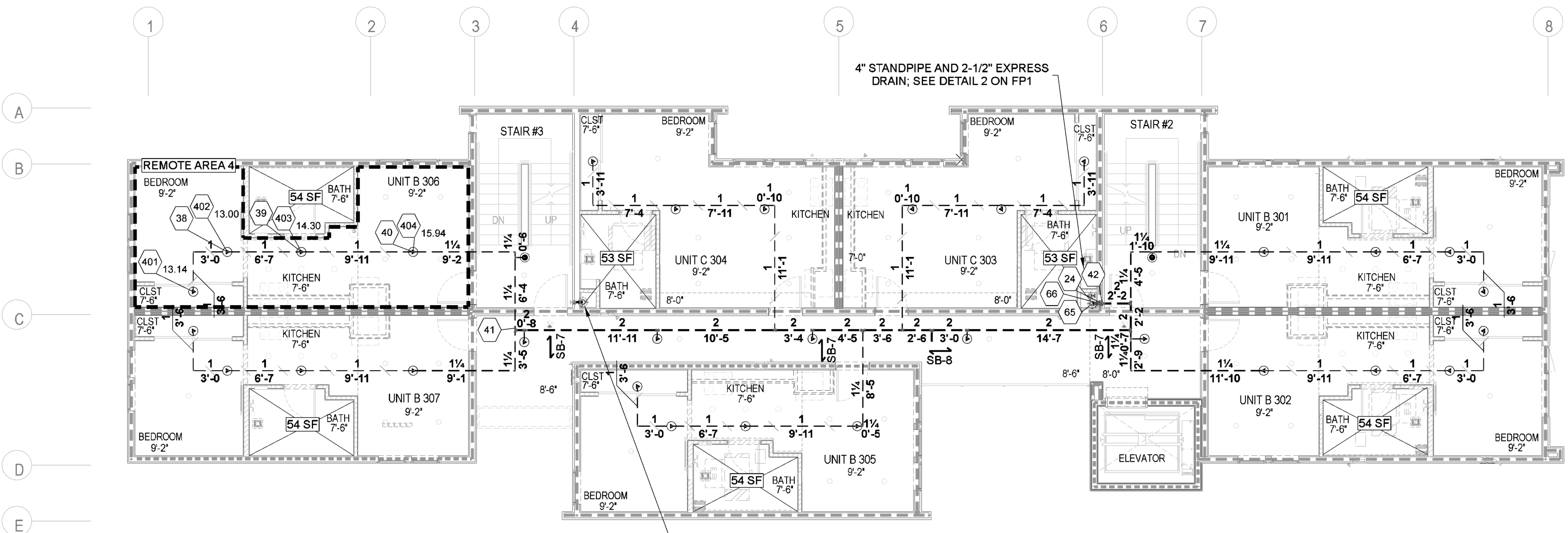
**CONTRACT DATA**

CONTRACTOR: Premium West Construction  
ADDRESS: 4417 30th Street  
CITY: San Diego, CA 92116  
PHONE:   
OWNER:   
ADDRESS:   
CITY:   
APN:   
PROJECT: Georgia Modern  
LOCATION: 4222 Georgia St, San Diego, CA 92103  
JOB NO: 22-3623-03  
SCALE: PER PLAN  
DRAWN BY: ADK  
DATE: 7/21/22  
SHEET: 1 OF 3  
FP1

**DRAWING REVISIONS**

NO.	DATE	BY	REVISIONS MADE
1			
2			
3			
4			

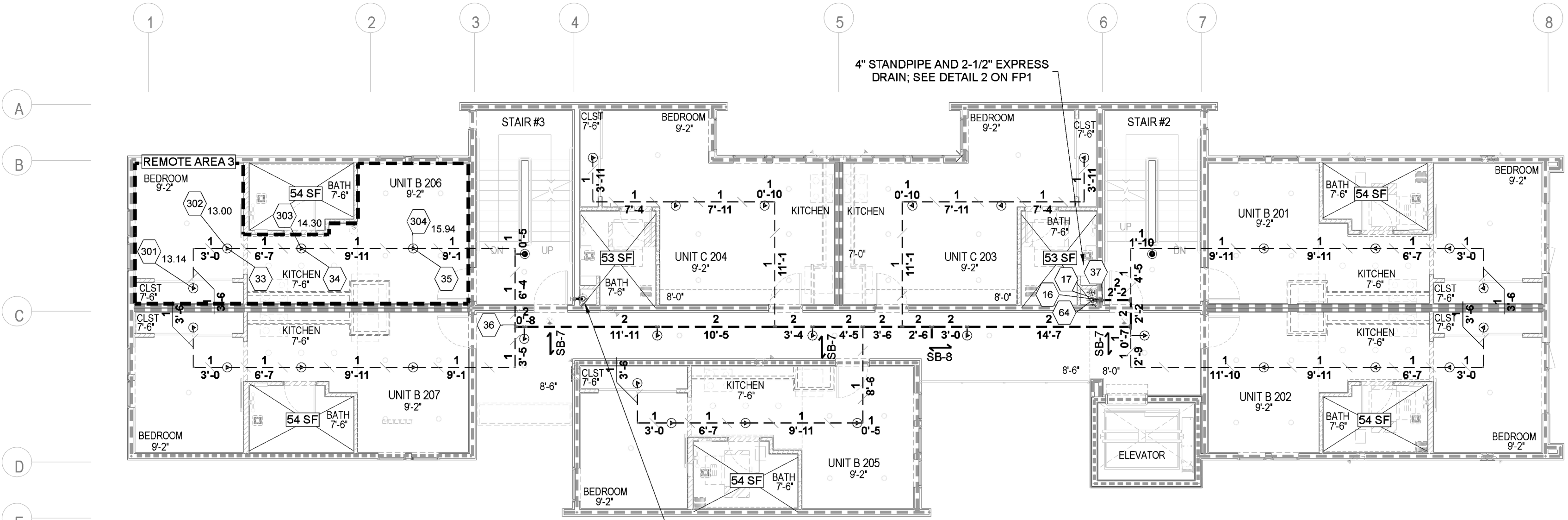
**BRANCH LINES: SCHED 70**  **RISER MAINS: SCHED 10**   
**THREADED STEEL 30**  **CPVC**



UNIT 306	
Remote Area 4	
OCCUPANCY CLASSIFICATION	Residential
TOTAL HOSE STREAMS	100.00
TOTAL HEADS FLOWING	4
K-FACTOR	4.9
TOTAL WATER REQUIRED	156.39
TOTAL PRESSURE REQUIRED	54.602
BASE OF RISER (gpm)	56.39
BASE OF RISER (psi)	19.371
SAFETY MARGIN (psi)	+11.941 (17.9%)

**LEVEL 3 FIRE SPRINKLER PLAN**  
FINISH FLOOR ELEV. 359'-6" SCALE: 1/8" = 1'-0"

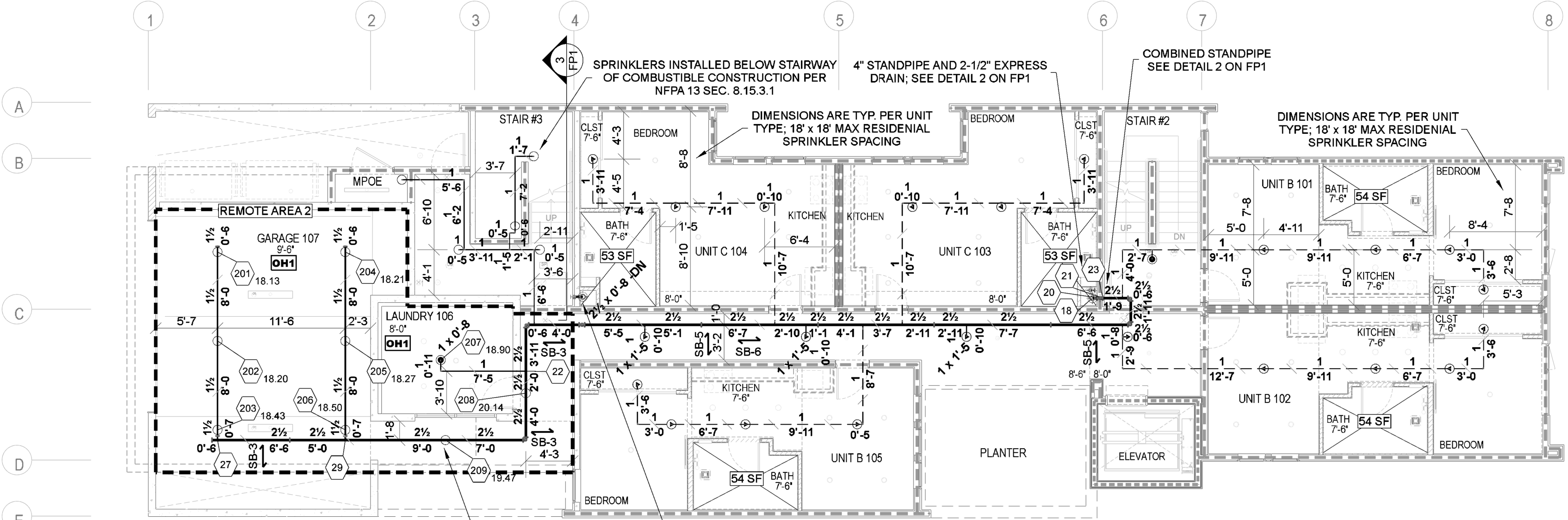
Sprinkler Legend - LEVEL 3											
Symbol	Manufacturer	SIN	Model	Quantity	K-Factor	Type	Size	Response	Finish	Temperature	Note
⊙	Victaulic	V2740	V27	31	4.9	Pendent	1/2"	Quick	White	155°F	RECESSED
⊙	Victaulic	V2708	V27	2	5.6	Pendent	1/2"	Quick	White	200°F	RECESSED
				<b>Total = 33</b>							

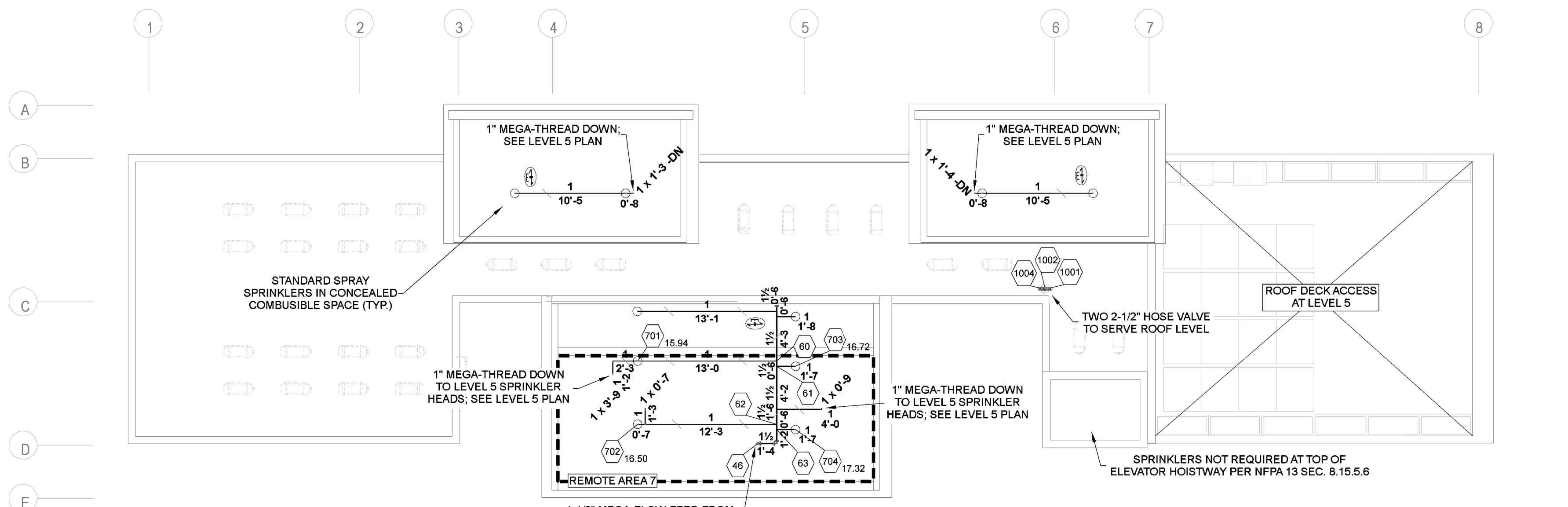


UNIT 206	
Remote Area 3	
OCCUPANCY CLASSIFICATION	Residential
TOTAL HOSE STREAMS	100.00
TOTAL HEADS FLOWING	4
K-FACTOR	4.9
TOTAL WATER REQUIRED	156.39
TOTAL PRESSURE REQUIRED	57.813
BASE OF RISER (gpm)	56.39
BASE OF RISER (psi)	27.144
SAFETY MARGIN (psi)	+8.729 (13.1%)

**LEVEL 2 FIRE SPRINKLER PLAN**  
FINISH FLOOR ELEV. 349'-0" SCALE: 1/8" = 1'-0"

Sprinkler Legend - LEVEL 2											
Symbol	Manufacturer	SIN	Model	Quantity	K-Factor	Type	Size	Response	Finish	Temperature	Note
⊙	Victaulic	V2740	V27	31	4.9	Pendent	1/2"	Quick	White	155°F	RECESSED
⊙	Victaulic	V2708	V27	2	5.6	Pendent	1/2"	Quick	White	200°F	RECESSED
				<b>Total = 33</b>							

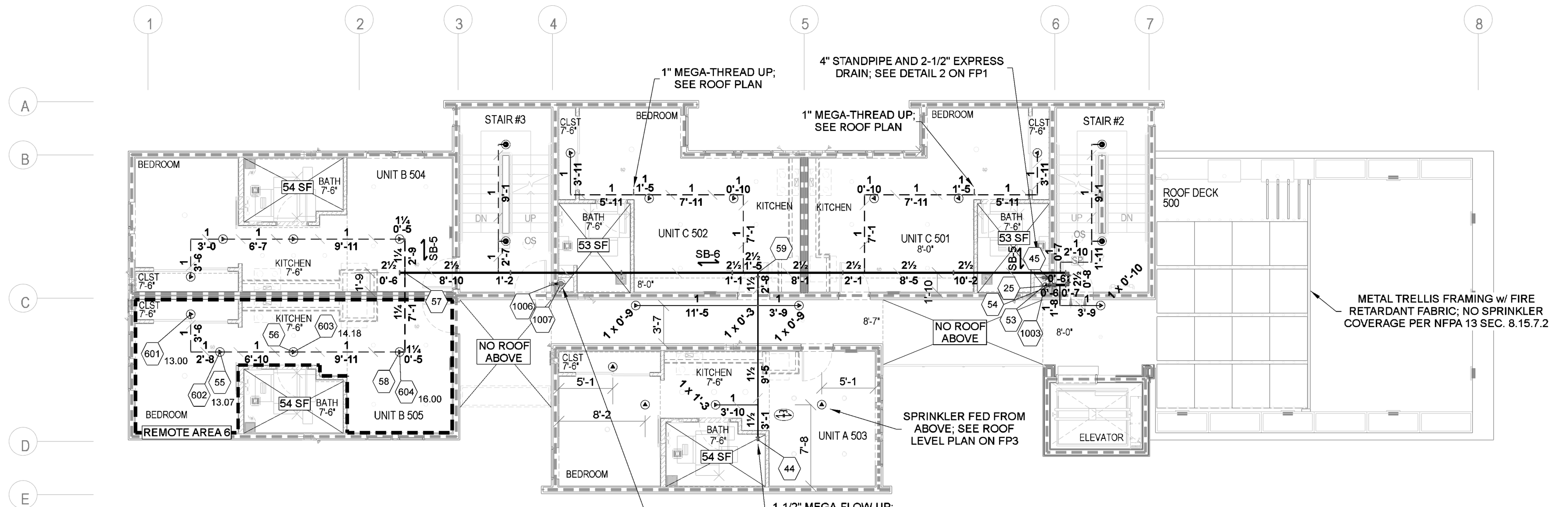




ATTIC	
Remote Area 7	
OCCUPANCY CLASSIFICATION	Light Hazard
TOTAL HOSE STREAMS	100.00
TOTAL HEADS FLOWING	4
K-FACTOR	5.6
TOTAL WATER REQUIRED	166.48
TOTAL PRESSURE REQUIRED	62.136
BASE OF RISER (gpm)	66.48
BASE OF RISER (psi)	17.900
SAFETY MARGIN (psi)	+4.379 (6.6%)

**ROOF LEVEL FIRE SPRINKLER PLAN**  
FINISH FLOOR ELEV. 380'-8" SCALE: 1/8" = 1'-0"

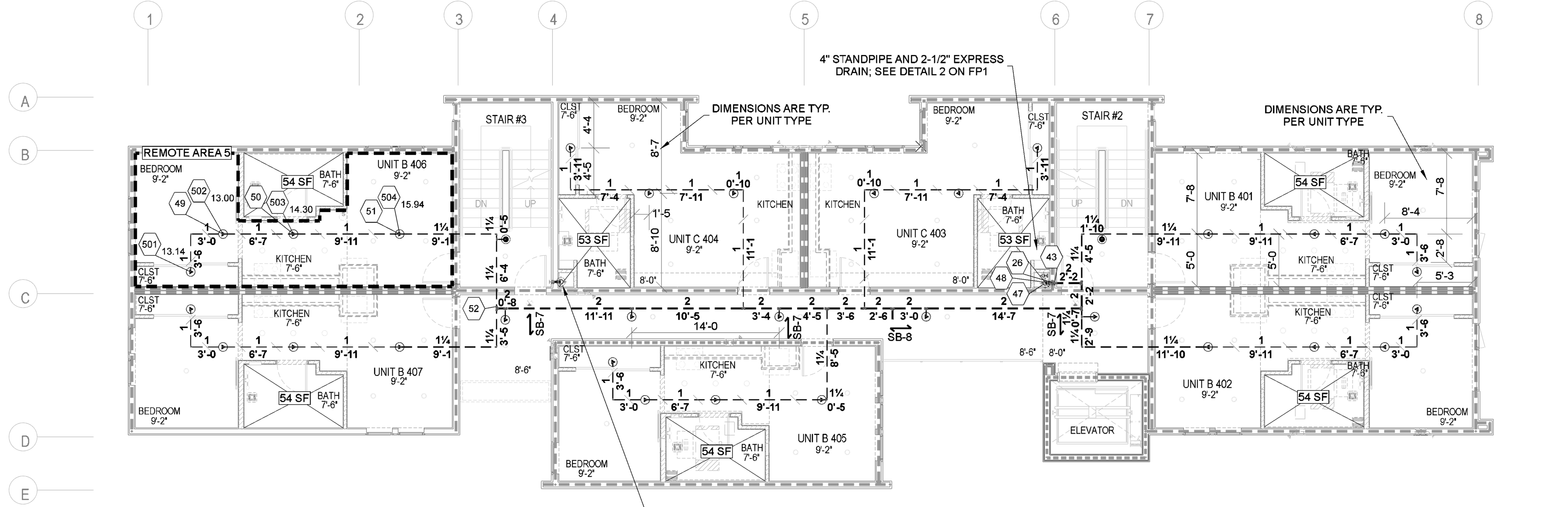
Sprinkler Legend - ROOF LEVEL										
Symbol	Manufacturer	SIN	Model	Quantity	K-Factor	Type	Size	Response	Finish	Temp
○	Victaulic	V2704	V27	10	5.6	Upright	1/2"	Quick	Brass	200°F
				<b>Total = 10</b>						



UNIT 505	
Remote Area 6	
OCCUPANCY CLASSIFICATION	Residential
TOTAL HOSE STREAMS	100.00
TOTAL HEADS FLOWING	4
K-FACTOR	4.9
TOTAL WATER REQUIRED	156.25
TOTAL PRESSURE REQUIRED	60.278
BASE OF RISER (gpm)	56.25
BASE OF RISER (psi)	16.102
SAFETY MARGIN (psi)	+6.284 (9.4%)

**LEVEL 5 FIRE SPRINKLER PLAN**  
FINISH FLOOR ELEV. 380'-6" SCALE: 1/8" = 1'-0"

Sprinkler Legend - LEVEL 5											
Symbol	Manufacturer	SIN	Model	Quantity	K-Factor	Type	Size	Response	Finish	Temperature	Note
○	Victaulic	V2740	V27	21	4.9	Pendent	1/2"	Quick	White	155°F	RECESSED
●	Victaulic	V2708	V27	4	5.6	Pendent	1/2"	Quick	White	200°F	RECESSED
				<b>Total = 25</b>							



UNIT 406	
Remote Area 5	
OCCUPANCY CLASSIFICATION	Residential
TOTAL HOSE STREAMS	100.00
TOTAL HEADS FLOWING	4
K-FACTOR	4.9
TOTAL WATER REQUIRED	156.39
TOTAL PRESSURE REQUIRED	59.163
BASE OF RISER (gpm)	56.39
BASE OF RISER (psi)	19.371
SAFETY MARGIN (psi)	+7.379 (11.1%)

**LEVEL 4 FIRE SPRINKLER PLAN**  
FINISH FLOOR ELEV. 370'-0" SCALE: 1/8" = 1'-0"

Sprinkler Legend - LEVEL 4											
Symbol	Manufacturer	SIN	Model	Quantity	K-Factor	Type	Size	Response	Finish	Temperature	Note
○	Victaulic	V2740	V27	31	4.9	Pendent	1/2"	Quick	White	155°F	RECESSED
●	Victaulic	V2708	V27	2	5.6	Pendent	1/2"	Quick	White	200°F	RECESSED
				<b>Total = 33</b>							

**SPRINKLER SYSTEM - GENERAL INFORMATION FOR**

Georgia Modern  
4222 Georgia St  
San Diego, CA 92103

High-piled storage:  Yes  No  
Rack storage:  Yes  No  
Commodity class: \_\_\_\_\_  
Max. storage ht. \_\_\_\_\_ ft  
Aisle width (min.) \_\_\_\_\_ ft  
Encapsulation:  Yes  No  
Solid Shelving:  Yes  No  
Flammable/Combustible liquids:  Yes  No  
Other storage:  Yes  No  
Hazardous materials:  Yes  No  
Idle pallets:  Yes  No  
Antifreeze systems:  Yes  No  
Dry or aux systems:  Yes  No

Date: \_\_\_\_\_  
Flow test date: \_\_\_\_\_  
Static: **66** psi  
Resid: **56** psi  
Flow: **1248** gpm  
Pilot: \_\_\_\_\_ psi  
Date: **4/29/2022**  
Location: **GEORGIA ST & EL CAJON BLVD**  
Location of aux/low point drains: \_\_\_\_\_  
Original main drain test results: Static: \_\_\_\_\_ psi, Residual: \_\_\_\_\_ psi

**HYDRAULIC - SYSTEM**

This Building is Protected By A Hydraulically Designed Automatic Sprinkler System

Date installed: \_\_\_\_\_  
Location: **Attic Remote Area 7 / Level 5**  
Area / System: **4**  
Sprinklers to Discharge: **Room Design**  
Basis of Design: **0.10 gpm/sqft**  
Density: **357 sqft**  
Area of Discharge: \_\_\_\_\_  
System Demand at Base of Riser: **66.48 gpm**  
GPM Discharge: **17.90 psi**  
Residual Pressure: **100 gpm**  
Hose Allowance: \_\_\_\_\_  
Occupancy Classification: **Light**  
Commodity Classification: \_\_\_\_\_  
Maximum Storage Height: \_\_\_\_\_  
Print #: **FP3** Dated: **7/13/2022**  
Contract #: **22-3623-03**

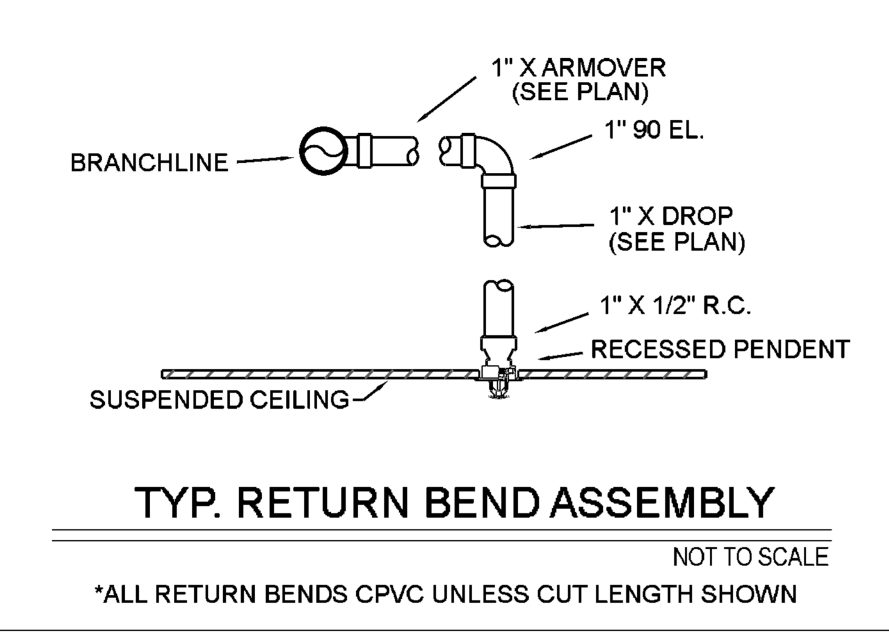
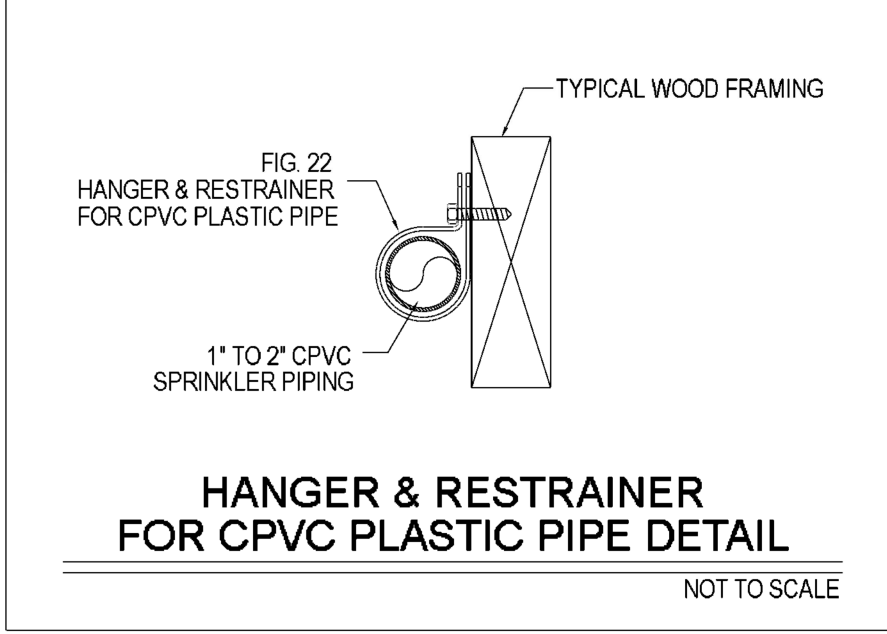
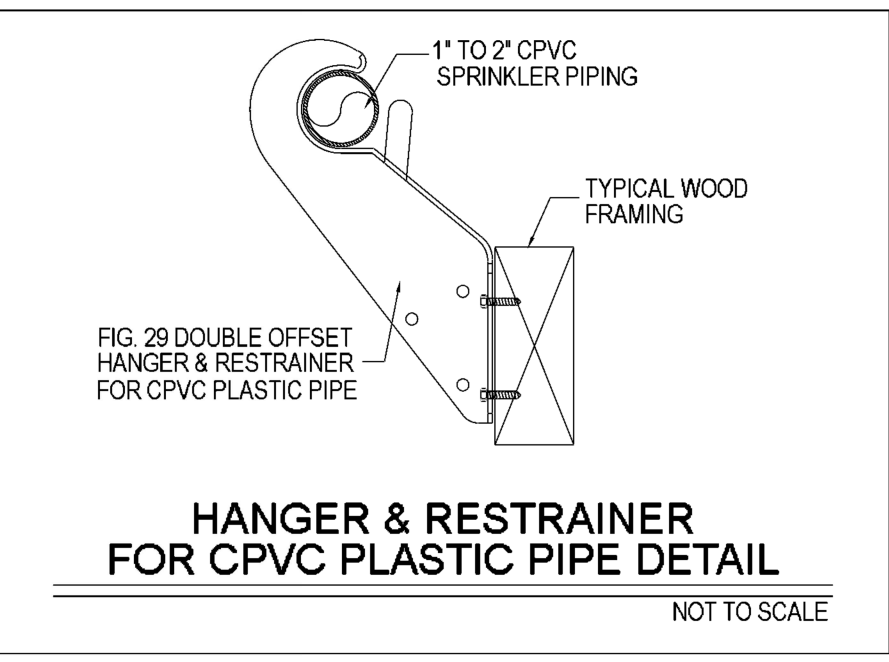
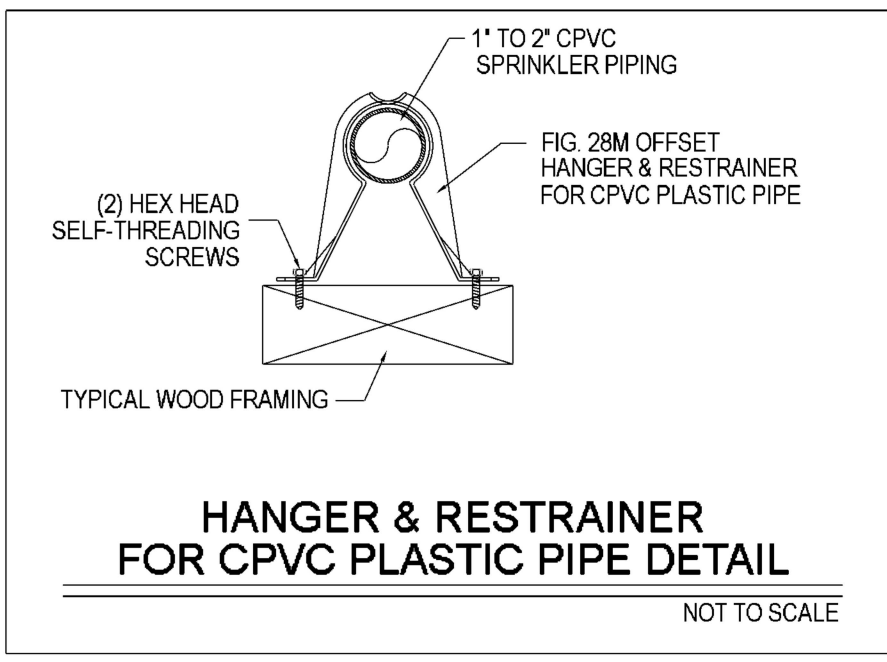
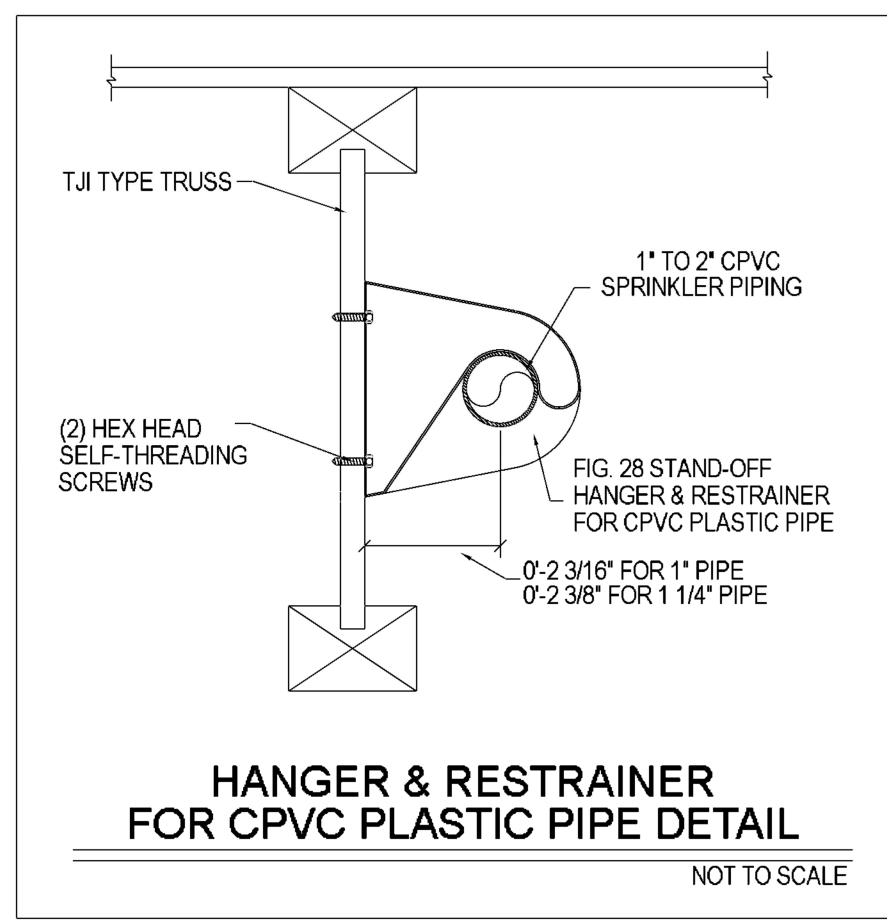
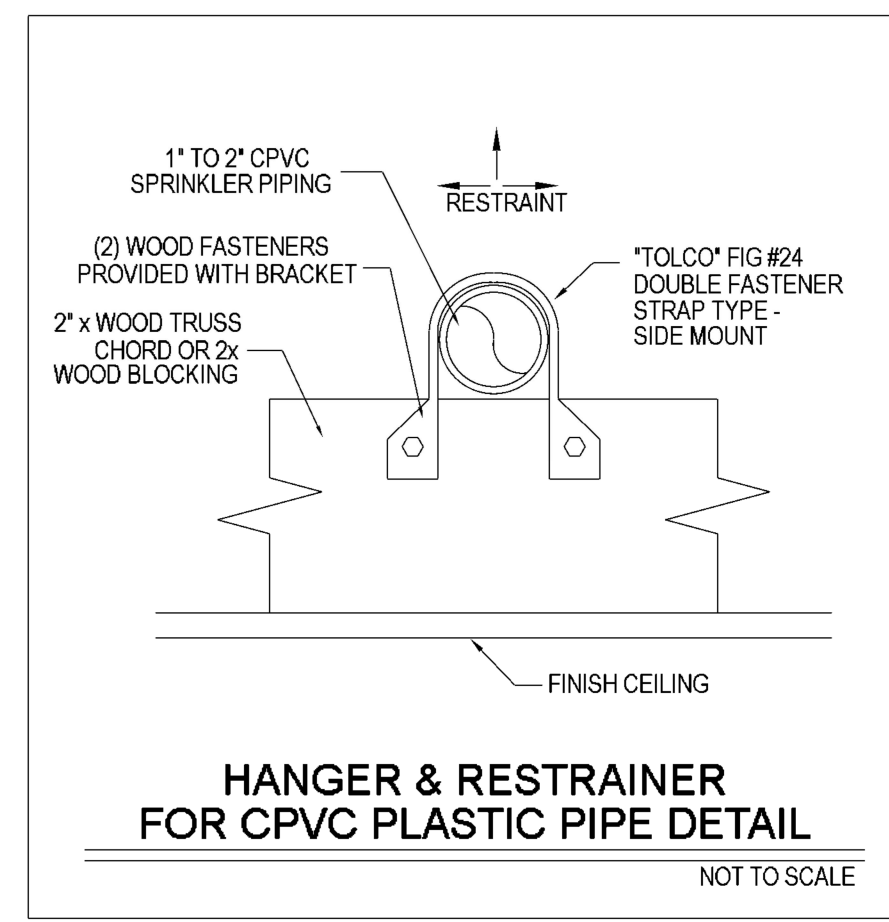
**FIRE SPRINKLER SYSTEM - SPRINKLER INFORMATION**

SIN	DRIFICE	TEMP	ORIENTATION	K	RESPONSE	TOTAL
V2704	-	200°F	Upright	5.6	Quick	10

HYDRAULICALLY MOST DEMANDING SPRINKLER  
MAX SPACING: **256** FT  
MINIMUM PRESSURE: **7.0** PSI  
DISCHARGE FLOW RATE: **13.0** GPM

SYSTEM DEMAND AT WATER SUPPLY SOURCE  
GPM DISCHARGE: **156.39**  
RESIDUAL PRESSURE: **54.60**

DESIGN PER: **NFPA 13 (ed. 2016)**



**SPRINKLER SYSTEM - GENERAL INFORMATION FOR**

Georgia Modern  
4222 Georgia St  
San Diego, CA 92103

High-piled storage:  Yes  No  
Rack storage:  Yes  No  
Commodity class: \_\_\_\_\_  
Max. storage ht. \_\_\_\_\_ ft  
Aisle width (min.) \_\_\_\_\_ ft  
Encapsulation:  Yes  No  
Solid Shelving:  Yes  No  
Flammable/Combustible liquids:  Yes  No  
Other storage:  Yes  No  
Hazardous materials:  Yes  No  
Idle pallets:  Yes  No  
Antifreeze systems:  Yes  No  
Dry or aux systems:  Yes  No

Date: \_\_\_\_\_  
Flow test date: \_\_\_\_\_  
Static: **66** psi  
Resid: **56** psi  
Flow: **1248** gpm  
Pilot: \_\_\_\_\_ psi  
Date: **4/29/2022**  
Location: **GEORGIA ST & EL CAJON BLVD**  
Location of aux/low point drains: \_\_\_\_\_  
Original main drain test results: Static: \_\_\_\_\_ psi, Residual: \_\_\_\_\_ psi

**HYDRAULIC - SYSTEM**

This Building is Protected By A Hydraulically Designed Automatic Sprinkler System

Date installed: \_\_\_\_\_  
Location: **Unit 505 Remote Area 6 / Level 5**  
Area / System: **4**  
Sprinklers to Discharge: **Residential**  
Basis of Design: **0.10 gpm/sqft**  
Density: **315 sqft**  
Area of Discharge: \_\_\_\_\_  
System Demand at Base of Riser: **56.25 gpm**  
GPM Discharge: **16.10 psi**  
Residual Pressure: **100 gpm**  
Hose Allowance: \_\_\_\_\_  
Occupancy Classification: **Residential**  
Commodity Classification: \_\_\_\_\_  
Maximum Storage Height: \_\_\_\_\_  
Print #: **FP3** Dated: **7/13/2022**  
Contract #: **22-3623-03**

**FIRE SPRINKLER SYSTEM - SPRINKLER INFORMATION**

SIN	DRIFICE	TEMP	ORIENTATION	K	RESPONSE	TOTAL
V2740	-	155°F	Pendent	4.9	Quick	21
V2708	-	200°F	Pendent	5.6	Quick	4

HYDRAULICALLY MOST DEMANDING SPRINKLER  
MAX SPACING: **256** FT  
MINIMUM PRESSURE: **7.0** PSI  
DISCHARGE FLOW RATE: **13.0** GPM

SYSTEM DEMAND AT WATER SUPPLY SOURCE  
GPM DISCHARGE: **156.25**  
RESIDUAL PRESSURE: **60.27**

DESIGN PER: **NFPA 13 (ed. 2016)**

**SPRINKLER SYSTEM - GENERAL INFORMATION FOR**

Georgia Modern  
4222 Georgia St  
San Diego, CA 92103

High-piled storage:  Yes  No  
Rack storage:  Yes  No  
Commodity class: \_\_\_\_\_  
Max. storage ht. \_\_\_\_\_ ft  
Aisle width (min.) \_\_\_\_\_ ft  
Encapsulation:  Yes  No  
Solid Shelving:  Yes  No  
Flammable/Combustible liquids:  Yes  No  
Other storage:  Yes  No  
Hazardous materials:  Yes  No  
Idle pallets:  Yes  No  
Antifreeze systems:  Yes  No  
Dry or aux systems:  Yes  No

Date: \_\_\_\_\_  
Flow test date: \_\_\_\_\_  
Static: **66** psi  
Resid: **56** psi  
Flow: **1248** gpm  
Pilot: \_\_\_\_\_ psi  
Date: **4/29/2022**  
Location: **GEORGIA ST & EL CAJON BLVD**  
Location of aux/low point drains: \_\_\_\_\_  
Original main drain test results: Static: \_\_\_\_\_ psi, Residual: \_\_\_\_\_ psi

**HYDRAULIC - SYSTEM**

This Building is Protected By A Hydraulically Designed Automatic Sprinkler System

Date installed: \_\_\_\_\_  
Location: **Unit 406 Remote Area 5 / Level 4**  
Area / System: **4**  
Sprinklers to Discharge: **Residential**  
Basis of Design: **0.10 gpm/sqft**  
Density: **315 sqft**  
Area of Discharge: \_\_\_\_\_  
System Demand at Base of Riser: **56.39 gpm**  
GPM Discharge: **19.37 psi**  
Residual Pressure: **100 gpm**  
Hose Allowance: \_\_\_\_\_  
Occupancy Classification: **Residential**  
Commodity Classification: \_\_\_\_\_  
Maximum Storage Height: \_\_\_\_\_  
Print #: **FP3** Dated: **7/13/2022**  
Contract #: **22-3623-03**

**FIRE SPRINKLER SYSTEM - SPRINKLER INFORMATION**

SIN	DRIFICE	TEMP	ORIENTATION	K	RESPONSE	TOTAL
V2740	-	155°F	Pendent	4.9	Quick	31
V2708	-	200°F	Pendent	5.6	Quick	2

HYDRAULICALLY MOST DEMANDING SPRINKLER  
MAX SPACING: **256** FT  
MINIMUM PRESSURE: **7.0** PSI  
DISCHARGE FLOW RATE: **13.0** GPM

SYSTEM DEMAND AT WATER SUPPLY SOURCE  
GPM DISCHARGE: **156.39**  
RESIDUAL PRESSURE: **59.16**

DESIGN PER: **NFPA 13 (ed. 2016)**

**Sprinkler Legend - ENTIRE PROJECT**

Symbol	Manufacturer	SIN	Model	Quantity	K-Factor	Type	Size	Response	Finish	Temperature	Note
○	Victaulic	V2740	V27	136	4.9	Pendent	1/2"	Quick	White	155°F	RECESSED
●	Victaulic	V2704	V27	451	5.6	Upright	1/2"	Quick	White	200°F	N/A
○	Victaulic	V2708	V27	1	5.6	Pendent	1/2"	Quick	White	200°F	N/A
○	Victaulic	V2708	V27	1	5.6	Pendent	1/2"	Quick	White	200°F	RECESSED
				<b>Total = 189</b>							



**CONTRACT DATA**  
CONTRACTOR: Premium West Construction  
ADDRESS: 4417 30th Street  
CITY: San Diego, CA 92116  
PHONE: \_\_\_\_\_  
OWNER: \_\_\_\_\_  
ADDRESS: \_\_\_\_\_  
CITY: \_\_\_\_\_  
APN: \_\_\_\_\_

**DRAWING REVISIONS**

NO.	DATE	BY	REVISIONS MADE
1			
2			
3			
4			

BRANCHLINES:  SCHD. 7  RISER/MAIN:  SCHD. 10  CPVC  
THREADED:  SCHD. 30  SCHD. 10  CPVC

**PROJECT: Georgia Modern**  
**LOCATION: 4222 Georgia St, San Diego, CA 92103**  
**TITLE: LEVEL 4, 5, & ROOF**

**JOB NO: 22-3623-03**  
**SCALE: PER PLAN**  
**DRAWN BY: ADK**  
**DATE: 7/21/22**  
**SHEET: 3 OF 3**  
**FP3**