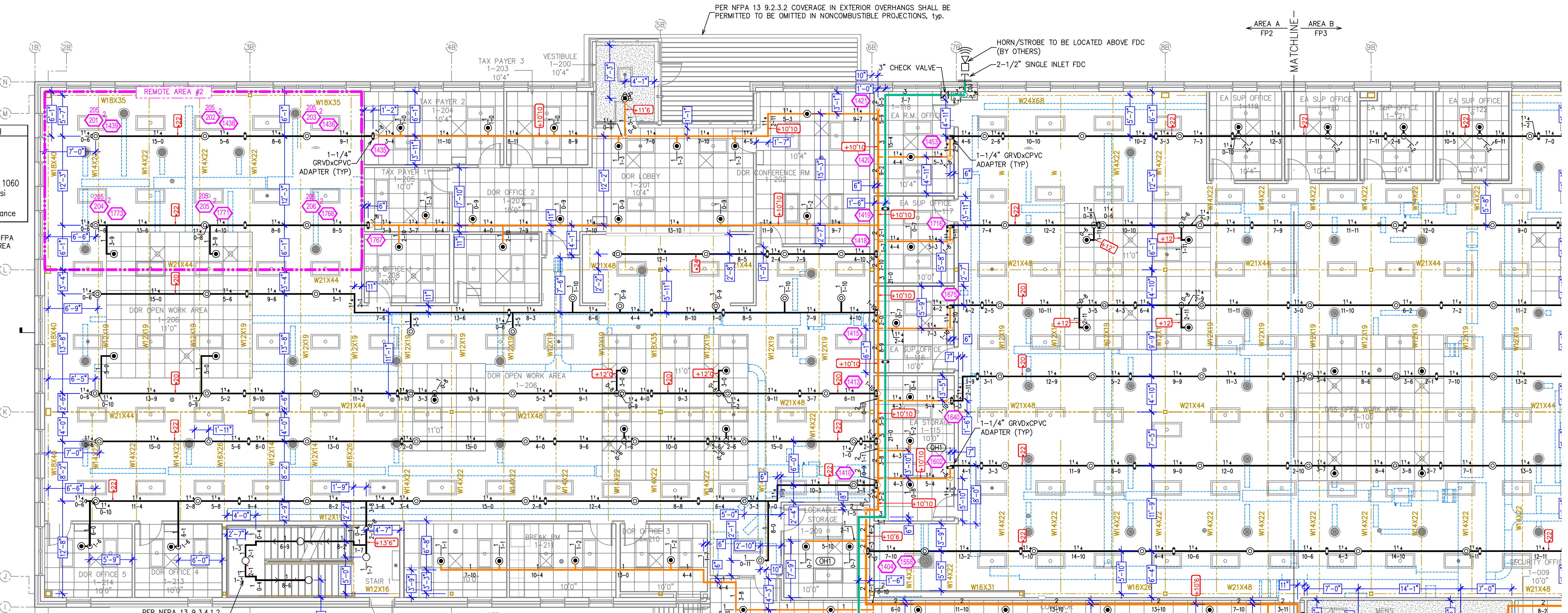


KEY PLAN
NTS

CALC PLACARD

Design Area #2 HAZARD: LH
Zone: 1 System Type: WET
Location: 1ST FLOOR NORTH WEST
Flowing Outlets: 6 Remote Area: 1060
Density: 0.10
Flow: 228.2 gpm @ 64.5 psi
Calculation Safety: 5.4 psi
Includes 100 gpm hose allowance

NOTE:
1500 S.F. DECREASED BY 35% PER NFPA
FIGURE 19.3.3.2.3.1 FOR A DESIGN AREA
OF 1001 S.F. BASED ON A CEILING
HEIGHT OF 14'6"



FIRE SPRINKLER PLAN - 1ST FLOOR AREA A
SCALE: 1/8" = 1'-0"

NOTE:
UNLESS OTHERWISE NOTED, WALL HEIGHT
EXTENDS TO THE DECK
BOTTOM OF LIGHT FIXTURES TO BE AT 10'
AFD
PER MECHANICAL PLANS ALL EXPOSED
PIPING AND DUCTWORK SHALL BE HIGH
AND TIGHT TO STRUCTURE ABOVE

INSTALLATION NOTE:
UPRIGHT SPRINKLERS TO BE INSTALLED WITH THE
DEFLECTOR 1" TO 6" BELOW THE BOTTOM OF BEAMS
BUT NO MORE THAN 22" BELOW THE DECK (TYP)

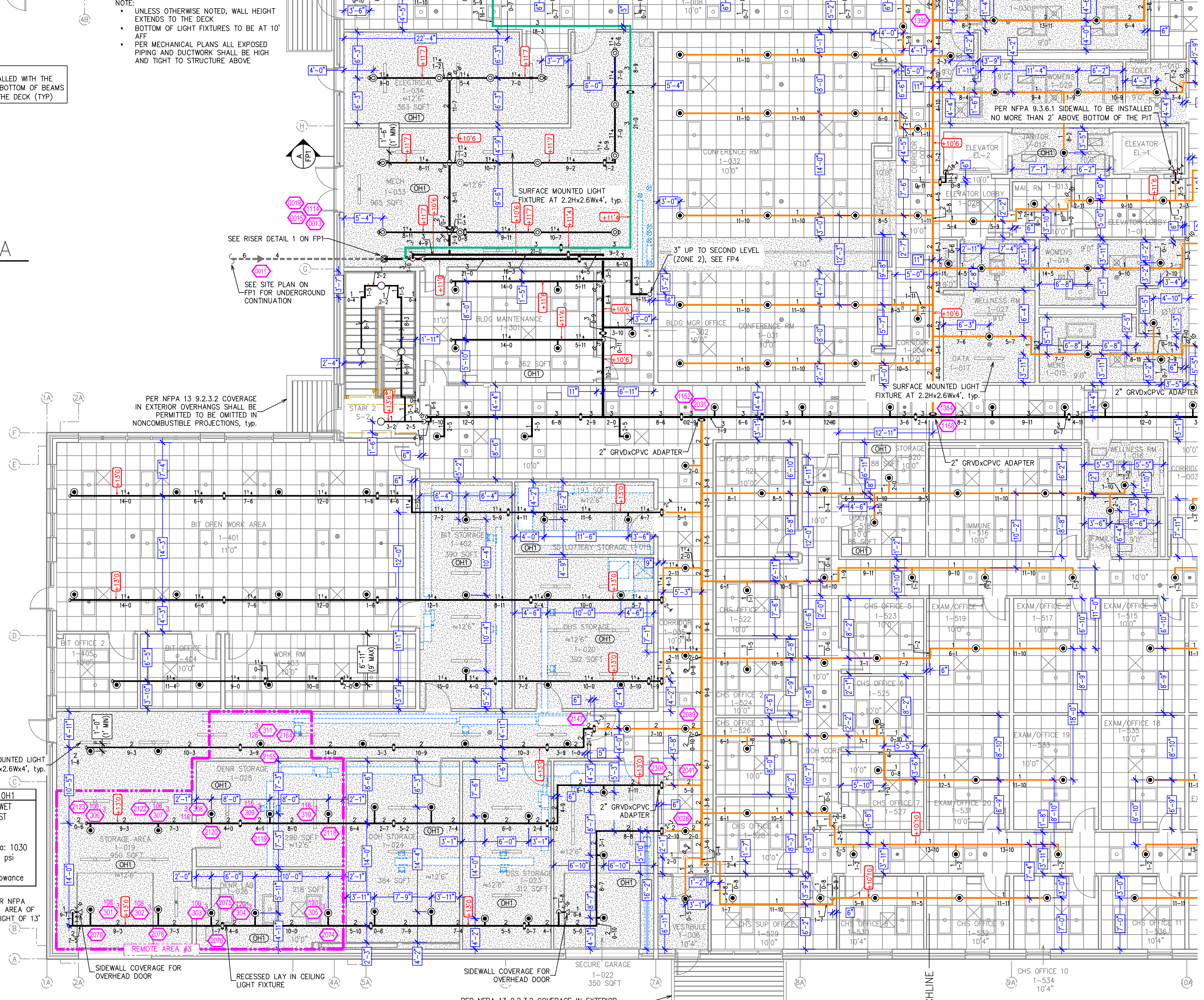
PIPE LEGEND

- STEEL FIRE SPRINKLER PIPING
- FDC (STEEL) FIRE SPRINKLER PIPING
- CPVC SPRINKLER PIPING
- UNDERGROUND PIPING

	MAXIMUM DISTANCE BETWEEN HANGERS (FT.-IN.)					
	NOMINAL PIPE SIZE (IN.)					
STEEL PIPE	12-0	12-0	15-0	15-0	15-0	15-0
CPVC PIPE	6-0	6-6	7-0	8-0	9-0	10-0

Design Area #3 HAZARD: OH1
Zone: 1 System Type: WET
Location: 1ST FLOOR SOUTH WEST
Flowing Outlets: 11 Remote Area: 1030
Density: 0.15
Flow: 449.5 gpm @ 49.9 psi
Calculation Safety: 19.8 psi
Includes 250 gpm hose allowance

NOTE:
1500 S.F. DECREASED BY 35% PER NFPA
FIGURE 19.3.3.2.3.1 FOR A DESIGN AREA
OF 968 S.F. BASED ON A CEILING HEIGHT OF 13'



SPRINKLER LEGEND

PIPE TEST TYPE	PIPE SIZE	FLOW RATE	RELIABILITY	SPRINKLER TYPE	DESIGN AREA	AREA	DATE	DESCRIPTION	BY
1	1/2"	5.60	1/2"	RA1412	RELIABLE	FFR506		SEM-RECEIVED	148 SF/100 SF
2	3/4"	5.60	1/2"	RA1422	RELIABLE	FFR506		NONE	148 SF/100 SF
3	1"	5.60	1/2"	RA1432	RELIABLE	FFR506		NONE	148 SF/100 SF
4	1 1/4"	5.60	1/2"	RA1442	RELIABLE	FFR506		SEM-RECEIVED	148 SF/100 SF
5	TOTAL								895

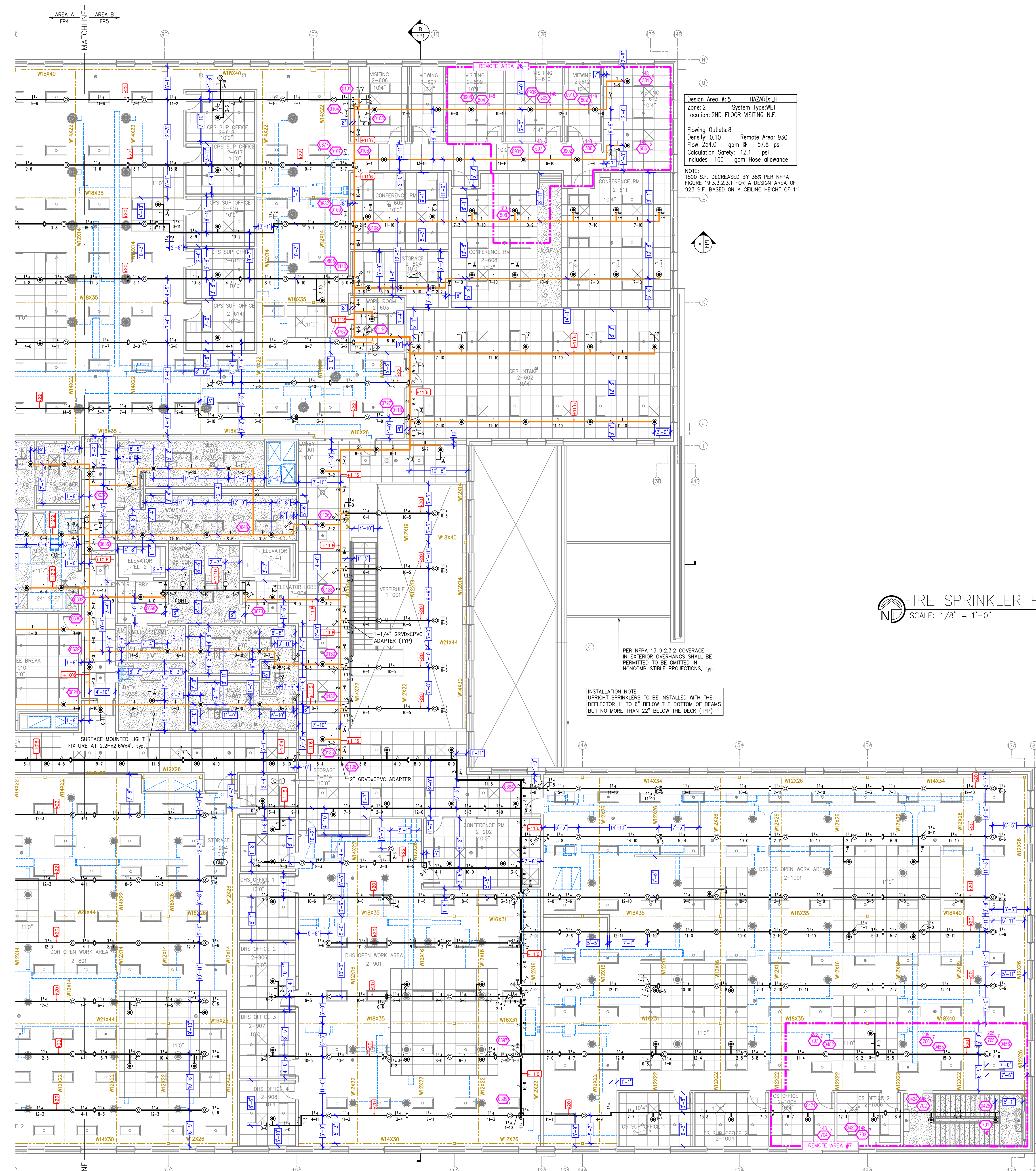
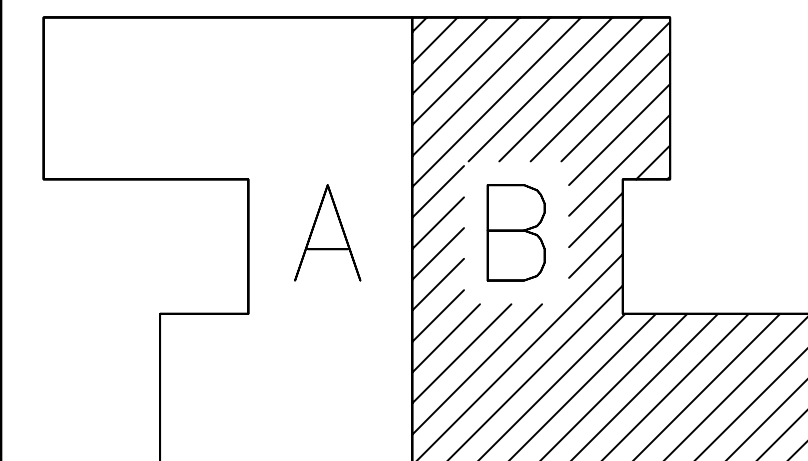
SD MULTI-AGENCY BUILDING

FIRE SPRINKLER PLAN

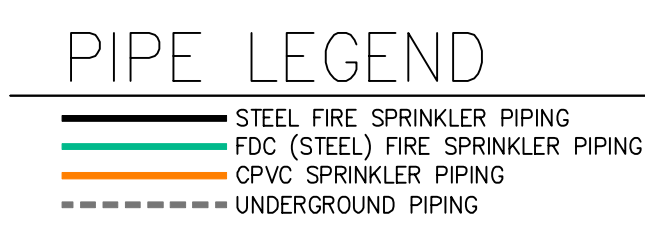
PERMIT NO.
CONTRACT NO.
APPROVAL
DRAWN BY
SUBMITTED
PLOTTED

FP - 2 OF 5

KEY PLAN
NTS



	MAXIMUM DISTANCE BETWEEN HANGERS (FT.-IN.)					
	NOMINAL PIPE SIZE (IN.)					
STEEL PIPE	12-0	12-0	15-0	15-0	15-0	15-0
CPVC PIPE	6-0	6-6	7-0	8-0	9-0	10-0



Design Area #5 HAZARD: LH
Zone: 2 System Type: WET
Location: 2ND FLOOR VISITING N.E.
Flowing Outlets: 8
Density: 0.10 Remote Area: 930
Flow 254.0 gpm @ 57.8 psi
Calculation Safety: 12.1 psi
Includes 100 gpm Hose allowance

NOTE: 1500 S.F. DECREASED BY 38% PER NFPA FIGURE 19.3.3.2.3.1 FOR A DESIGN AREA OF 923 S.F. BASED ON A CEILING HEIGHT OF 11'

PER NFPA 13 9.2.3.2 COVERAGE IN EXTERIOR OVERHANGS SHALL BE PERMITTED TO BE OMITTED IN NONCOMBUSTIBLE PROJECTIONS, TYP.

INSTALLATION NOTE: UPRIGHT SPRINKLERS TO BE INSTALLED WITH THE DEFLECTOR 1" TO 4" BELOW THE BOTTOM OF BEAMS BUT NO MORE THAN 22" BELOW THE DECK (TYP)

FIRE SPRINKLER PLAN - 2ND FLOOR AREA B
SCALE: 1/8" = 1'-0"

Design Area #7 HAZARD: LH
Zone: 2 System Type: WET
Location: 2ND FLOOR SOUTH EAST
Flowing Outlets: 7
Density: 0.10 Remote Area: 1020
Flow 227.6 gpm @ 55.8 psi
Calculation Safety: 10.3 psi
Includes 100 gpm Hose allowance

NOTE: 1500 S.F. DECREASED BY 32% PER NFPA FIGURE 19.3.3.2.3.1 FOR A DESIGN AREA OF 1013 S.F. BASED ON A CEILING HEIGHT OF 15'

CALC PLACARD

REVISIONS		SPRINKLER LEGEND	
DATE	DESCRIPTION	TYPE	AMOUNT
		STEEL	148 SF/100 SF
		FDC (STEEL)	148 SF/100 SF
		CPVC	148 SF/100 SF
		TOTAL	444 SF

SD MULTI-AGENCY BUILDING

FIRE SPRINKLER PLAN	
PERMIT NO.	
CONTRACT NO.	
APPROVAL	
DRAWN BY	
SUBMITTED	
PLOTTED	
FP - 5 OF 5	