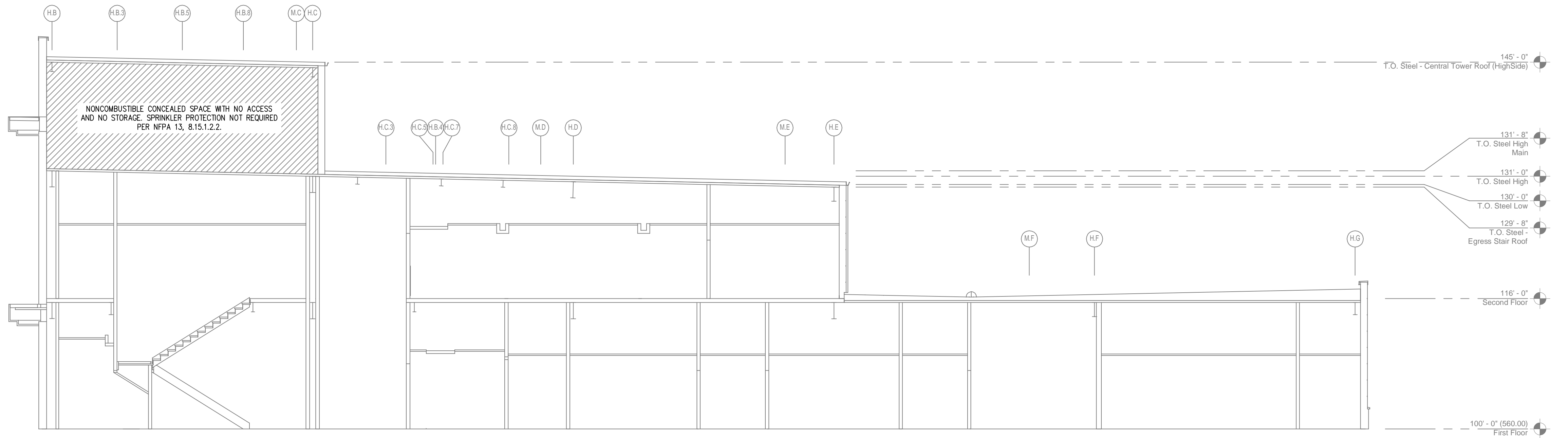
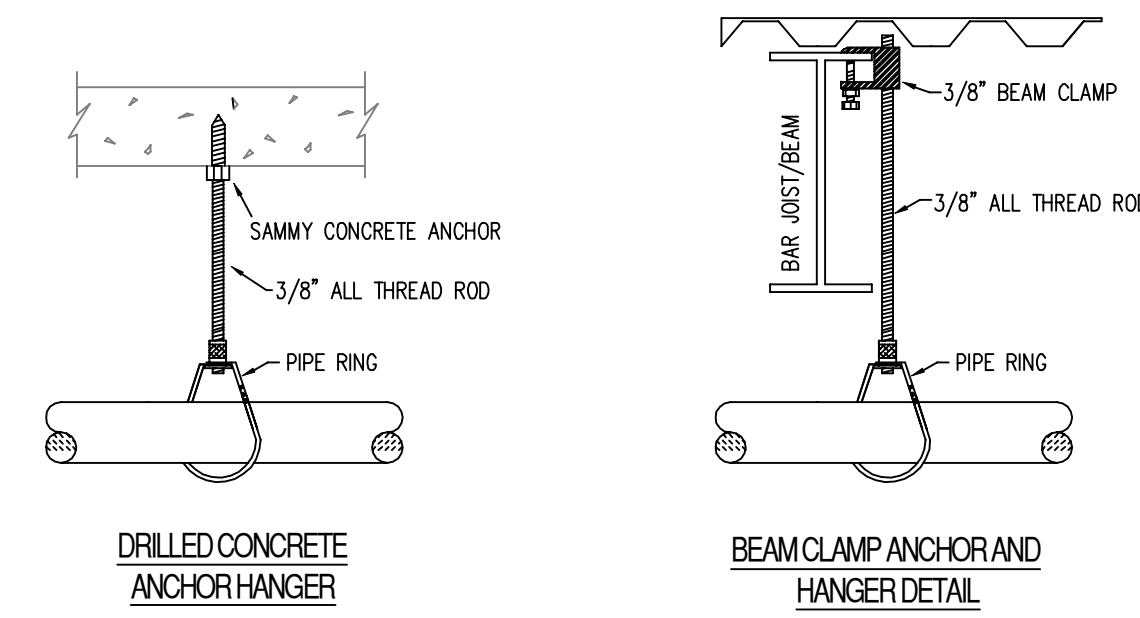


GENERAL NOTES

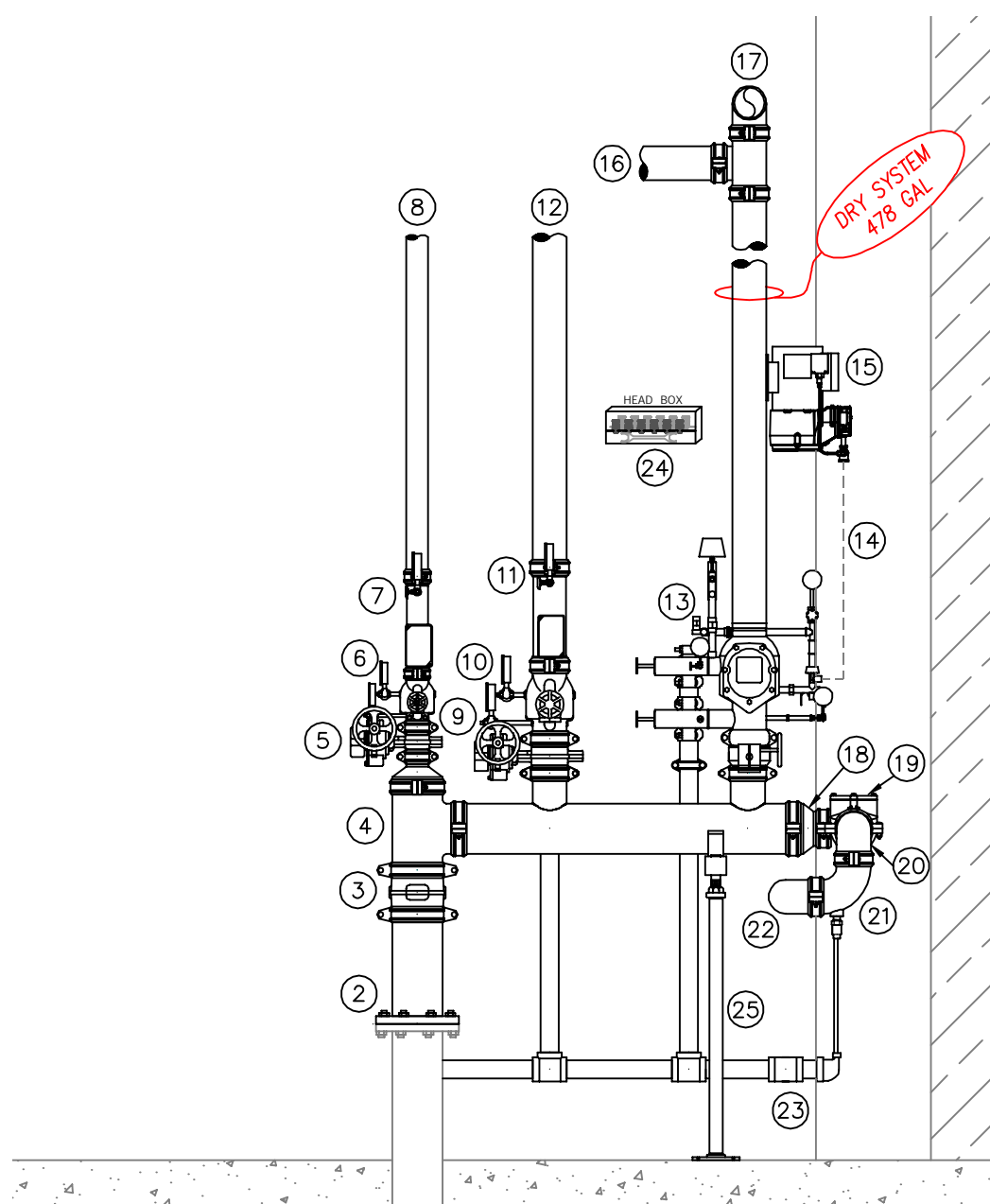
- INTERNATIONAL BUILDING CODE (2015)
 - HOSPITAL (ZONES 1-4)
 - 1.1. OCCUPANCY: HOSPITAL
 - 1.2. TYPE OF CONSTRUCTION: II-B (NONCOMBUSTIBLE PROTECTED)
 - 1.3. SPRINKLERED AREAS - SEE ZONE PLAN
 - 1.4. INSTALLATION STANDARDS: NFPA 13 (2013), NFPA 20 (2013), AND NFPA 22 (2013)
 - MEDICAL OFFICE BUILDING (ZONES 5-6)
 - 1.5. OCCUPANCY: BUSINESS
 - 1.6. TYPE OF CONSTRUCTION: II-B (NONCOMBUSTIBLE UNPROTECTED)
 - 1.7. SPRINKLERED AREAS - SEE ZONE PLAN
 - 1.8. INSTALLATION STANDARDS: NFPA 13 (2013), NFPA 20 (2013), AND NFPA 22 (2013)
- SPRINKLER PIPE TYPES:
 - WET:
 - 2.1. 1" THROUGH 1-1/4" BRANCH LINES TO BE BLK SCHEDULE 40 PIPING WITH THREADED FITTINGS AND/OR GROOVED FITTINGS
 - 2.2. 1-1/2" THROUGH 6" MAIN & BRANCH LINES TO BE BLK SCHEDULE 10 PIPING WITH PAINTED SHORT RADIUS GROOVED FITTINGS
 - DRY:
 - 2.3. 1" BRANCH LINES TO BE THREADED BLK SCHEDULE 40 WITH THREADED FITTINGS AND/OR GROOVED FITTINGS
 - 2.4. 1-1/2" MAIN & BRANCH LINES TO BE GROOVED BLK SCHEDULE 10 WITH PAINTED SHORT RADIUS GROOVED FITTINGS
 - SM:
 - 2.5. PIPING TO BE BLACK WHERE CONCEALED AND GALVANIZED WHERE EXPOSED TO BUILDING EXTERIOR
 - 2.6. THREADED FITTINGS TO BE GALVANIZED WHERE EXPOSED TO BUILDING EXTERIOR
 - 2.7. GROOVED FITTINGS TO BE PAINTED WHERE CONCEALED AND GALVANIZED WHERE EXPOSED TO BUILDING EXTERIOR
 - 2.8. 1" THROUGH 1-1/4" BRANCH LINES TO BE SCHEDULE 40 WITH THREADED FITTINGS
 - 2.9. 1-1/2" THROUGH 4" MAIN & BRANCH LINES TO BE SCHEDULE 10 WITH SHORT RADIUS GROOVED FITTINGS
- DESIGN CRITERIA:
 - 3.1. LIGHT HAZARD AREAS DESIGNED TO DELIVER 0.10 GPM/S.F. OVER THE MOST DEMANDING 1500 S.F.
 - 3.2. ORDINARY HAZARD GROUP 1 AREAS DESIGNED TO DELIVER 0.15 GPM/S.F. OVER THE MOST DEMANDING 1500 S.F.
 - 3.3. ORDINARY HAZARD GROUP 2 AREAS DESIGNED TO DELIVER 0.20 GPM/S.F. OVER THE MOST DEMANDING 1500 S.F.
 - 3.4. REMOTE AREA REDUCTIONS HAVE BEEN APPLIED WHERE PERMITTED BY NFPA 13, 11.2.2.3.2.3
 - 3.5. HOSE ALLOWANCE NOT INCLUDED IN HYDRAULIC CALCULATIONS SINCE FIRE HYDRANTS ARE FED BY THE CITY'S UNDERGROUND WATER DISTRIBUTION SYSTEM
- NOTES:
 - 4.1. ALL MATERIAL TO BE NEW AND MEET U.L. STANDARDS
 - 4.2. HANGERS TO BE INSTALLED IN ACCORDANCE WITH NFPA 13 - SEE PLAN FOR HANGING REQUIREMENTS
 - 4.3. DRY AND PREACTION SYSTEM PIPE SLOPE INSTALLATION
 - SPRINKLER MAINS TO BE 1/4" PER 10 FEET
 - SPRINKLER BRANCH LINES TO BE 1/2" PER 10 FEET
 - 4.4. DRY SYSTEM CAPACITY
 - 4.4.1. 475 GAL
 - 4.5. PREACTION SYSTEM CAPACITY
 - 4.5.1. 3 GAL
- SYMBOLS USED ON DRAWINGS:
 - PIPE ELEVATION A.F.F.
 - PIPE ELEVATION BELOW B.O.D.
 - ROOM HAZARD CLASSIFICATION (ALL ROOMS ARE CONSIDERED LIGHT HAZARD UNLESS NOTED)
 - HYDRAULIC CALCULATION JUNCTION POINT
 - CEILING HEIGHT
- SCOPE OF WORK:
 - HOSPITAL (ZONES 1-4)
 - 6.1. NEW TWO STORY HOSPITAL TO BE PROTECTED THROUGH BY NEW WET FIRE SPRINKLER SYSTEM(S), WITH THE FOLLOWING EXCEPTIONS:
 - LOADING DOCK AND PORTE COCHERE TO BE PROTECTED BY A DRY FIRE SPRINKLER SYSTEM
 - MOF H-1-0188 TO BE PROTECTED BY A DOUBLE INTERLOCK PRE-ACTION FIRE SPRINKLER SYSTEM
 - NORMAL ELECTRICAL H-1-0213 AND MR SCAN H-1-0074 TO BE PROTECTED BY CLEAN AGENT SYSTEMS
 - MEDICAL OFFICE BUILDING (ZONES 5-6)
 - 6.2. NEW TWO STORY BUILDING TO BE PROTECTED THROUGH BY NEW WET FIRE SPRINKLER SYSTEM(S).

STEEL PIPE	MAXIMUM DISTANCE BETWEEN HANGERS (FT.-IN.)					
	1"	1 1/4"	1 1/2"	2"	2 1/2"	3"
	12-0	12-0	15-0	15-0	15-0	15-0

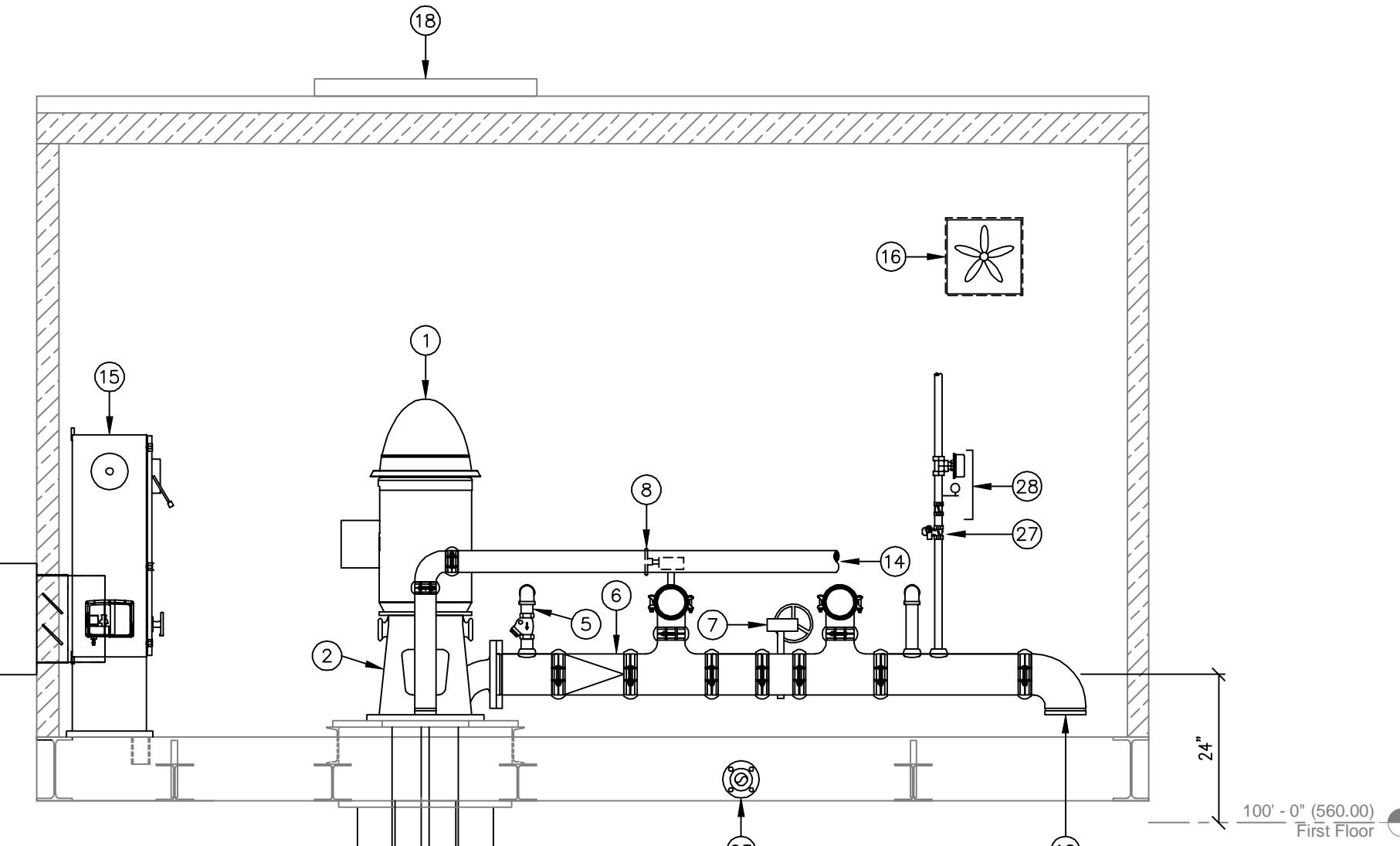


BUILDING SECTION "A"
SCALE: 1/8" = 1'-0"

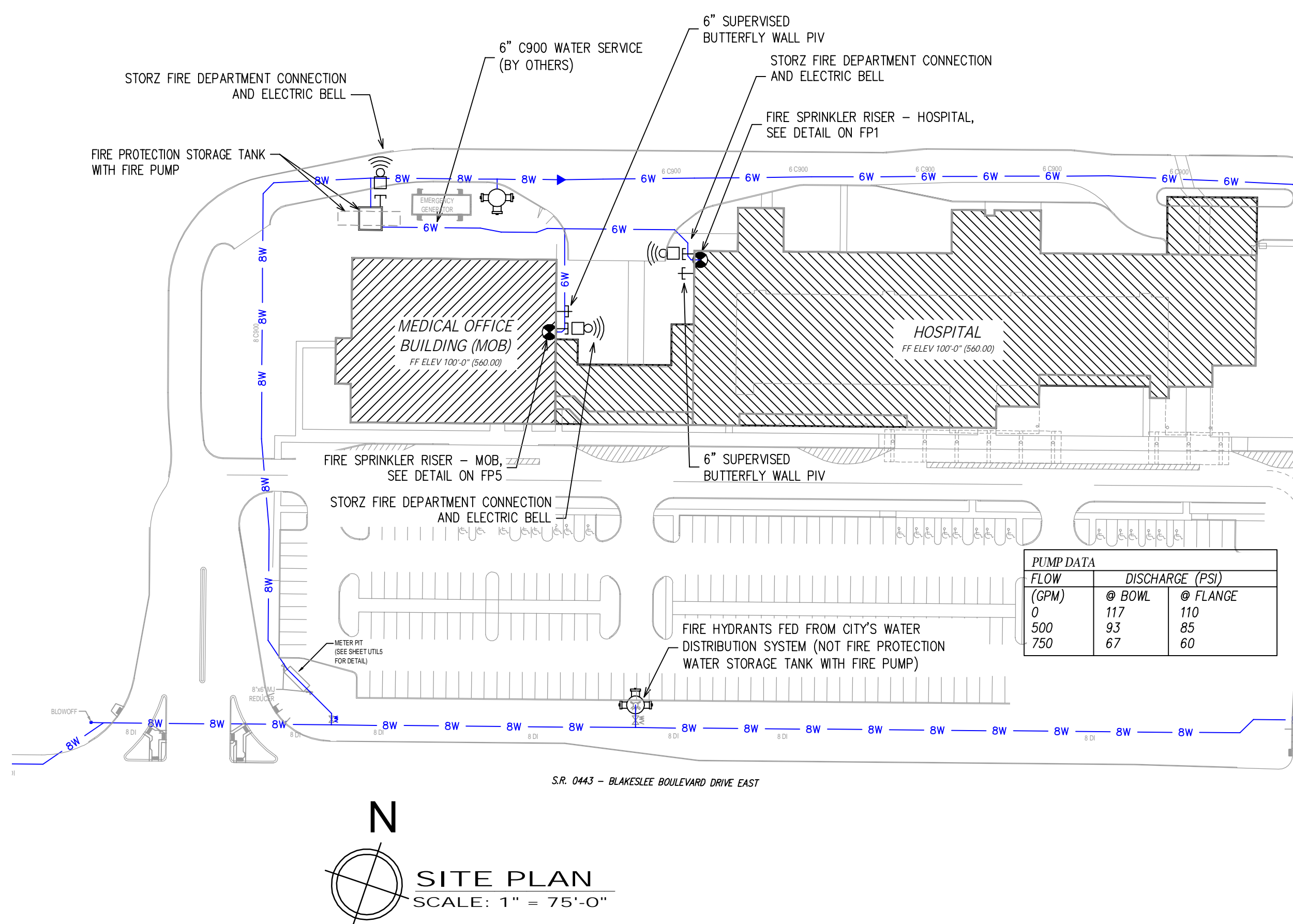
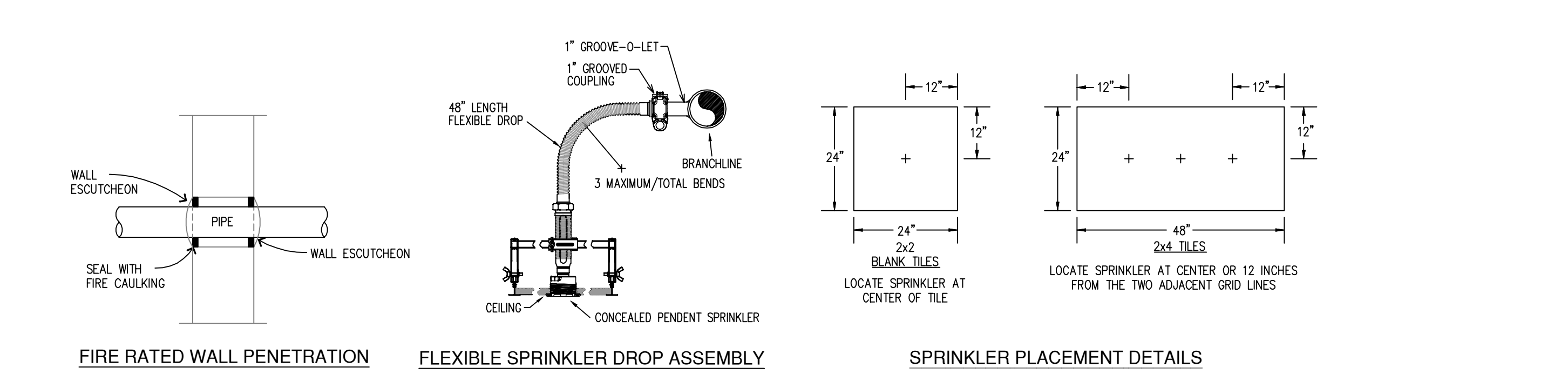
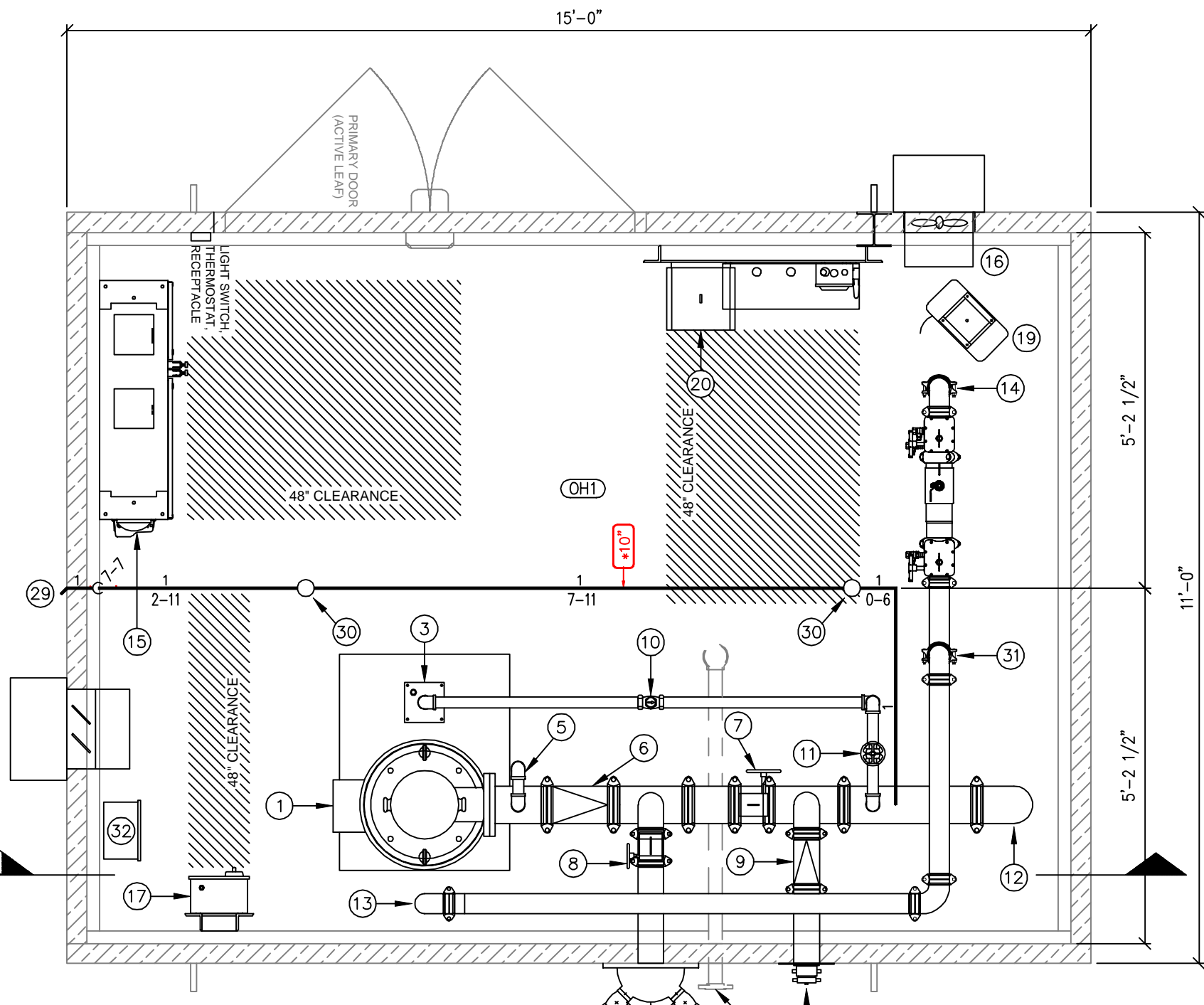
- SCOPE OF WORK:
 - HOSPITAL (ZONES 1-4)
 - 6.1. NEW TWO STORY HOSPITAL TO BE PROTECTED THROUGH BY NEW WET FIRE SPRINKLER SYSTEM(S), WITH THE FOLLOWING EXCEPTIONS:
 - LOADING DOCK AND PORTE COCHERE TO BE PROTECTED BY A DRY FIRE SPRINKLER SYSTEM
 - MOF H-1-0188 TO BE PROTECTED BY A DOUBLE INTERLOCK PRE-ACTION FIRE SPRINKLER SYSTEM
 - NORMAL ELECTRICAL H-1-0213 AND MR SCAN H-1-0074 TO BE PROTECTED BY CLEAN AGENT SYSTEMS
 - MEDICAL OFFICE BUILDING (ZONES 5-6)
 - 6.2. NEW TWO STORY BUILDING TO BE PROTECTED THROUGH BY NEW WET FIRE SPRINKLER SYSTEM(S).



- RISER LEGEND**
- 6" UNDERGROUND WATER SERVICE FROM FIRE BUILDING (BY OTHERS) (FLUSHING & TESTING OF THE UNDERGROUND SHALL BE COMPLETED PRIOR TO THE SPRINKLER SYSTEM HOOKUP. UNDERGROUND PAPERS ARE TO BE SUPPLIED TO THE "FP" CONTRACTOR BY THE G.C.)
 - 6" GROOVED FLANGE
 - 6" SUPERVISED BUTTERFLY POST INDICATOR VALVE (PIV)
 - 6" GROOVED TEE
 - 2-1/2" SUPERVISED BUTTERFLY VALVE
 - 2-1/2" GROOVED CHECK VALVE
 - 2-1/2" COMMERCIAL RISER MANIFOLD w/ FLOW SWITCH, PRESSURE GAUGE, AND TEST & DRAIN w/ PRV
 - 2-1/2" TO ZONE 2
 - 4" SUPERVISED BUTTERFLY VALVE
 - 4" GROOVED CHECK VALVE
 - 4" COMMERCIAL RISER MANIFOLD w/ FLOW SWITCH, PRESSURE GAUGE, AND TEST & DRAIN w/ PRV
 - 4" FEED MAIN TO STAIRWELL w/ ZONE CONTROL ASSEMBLIES (ZONES 1 AND 4)
 - 4" VICTAULIC MODEL 768 DRY VALVE w/ 4" GROOVED SUPERVISED BUTTERFLY VALVE
 - 1/2" LINE TO/FROM DRY VALVE TO AIR COMPRESSOR
 - GENERAL AIR RISER MOUNTED AIR COMPRESSOR
 - 4" TO LOADING DOCK (DRY SYSTEM)
 - 4" TO PORT COCHERE (DRY SYSTEM)
 - 6" x 4" CONCENTRIC GROOVED REDUCER
 - 4" CHECK VALVE
 - 4" GROOVED 90 ELL
 - 4" GROOVED DRAIN 90 ELL w/ AUTOMATIC BALL DRIP VALVE
 - 4" TO FDC
 - 2" COMBINED MAIN DRAIN (DISCHARGE TO BUILDING EXTERIOR)
 - SPARE HEAD BOX
 - PIPE STAND
- * ALL WRING/INTERFACING OF ALARMS BY OTHERS
- * ALL PIPING PENETRATING THE EXTERIOR WALL TO BE GALVANIZED



- FIRE PUMP LEGEND**
- VERTICAL TURBINE FIRE PUMP MOTOR: 40 HP @ 1800 RPM
 - 6" FLANGE DISCHARGE HEAD
 - JOCKEY PUMP
 - VERTICAL TURBINE FIRE PUMP: 500 GPM @ 85 PSI
 - (85 PSI AT FLANGE DISCHARGE AND 93 PSI AT TOP OF BOWL)
 - AIR RELEASE VALVE ASSEMBLY
 - 6" GROOVED CHECK VALVE
 - 6" SUPERVISED GROOVED BUTTERFLY VALVE
 - 4" SUPERVISED GROOVED BUTTERFLY VALVE
 - 4" GROOVED CHECK VALVE
 - 1-1/2" CHECK VALVE
 - 1-1/2" THREADED GATE VALVE
 - 6" TO HOSPITAL AND MOB (BY OTHERS)
 - TANK FILL
 - 3" FROM CITY'S WATER DISTRIBUTION SYSTEM
 - FIRE PUMP CONTROLLER
 - VENTILATION FAN
 - JOCKEY PUMP CONTROLLER
 - ROOF HATCH
 - HEATER WITH THERMOSTAT
 - MINI POWER ZONE
 - 4" TO FIRE PUMP TEST HEADER
 - 4" TO FIRE DEPARTMENT CONNECTION CHECK VALVE
 - FLOOR DRAIN (BY OTHERS)
 - 4"x2-1/2" (TWO-WAY) FIRE PUMP TEST HEADER
 - STORZ FIRE DEPARTMENT CONNECTION
 - 30,000 GALLON FIRE PROTECTION WATER STORAGE TANK
 - 1" SUPERVISED BUTTERFLY VALVE
 - 1" COMMERCIAL RISER MANIFOLD w/ CHECK VALVE, FLOW SWITCH, PRESSURE GAUGE, AND TEST & DRAIN w/ PRV
 - INSPECTOR'S TEST CONNECTION
 - UPRIGHT SPRINKLER (5.6k, 200 DEG F, VICTAULIC V2710)
 - SOLENOID VALVE FOR AUTO-FILL
 - TANK LEVEL MONITORING/AUTO-FILL UNIT



GRAPHIC SCALE - 1/8" = 1'-0"

REVISIONS	DESCRIPTION	JOB NO.	DATE	NO.

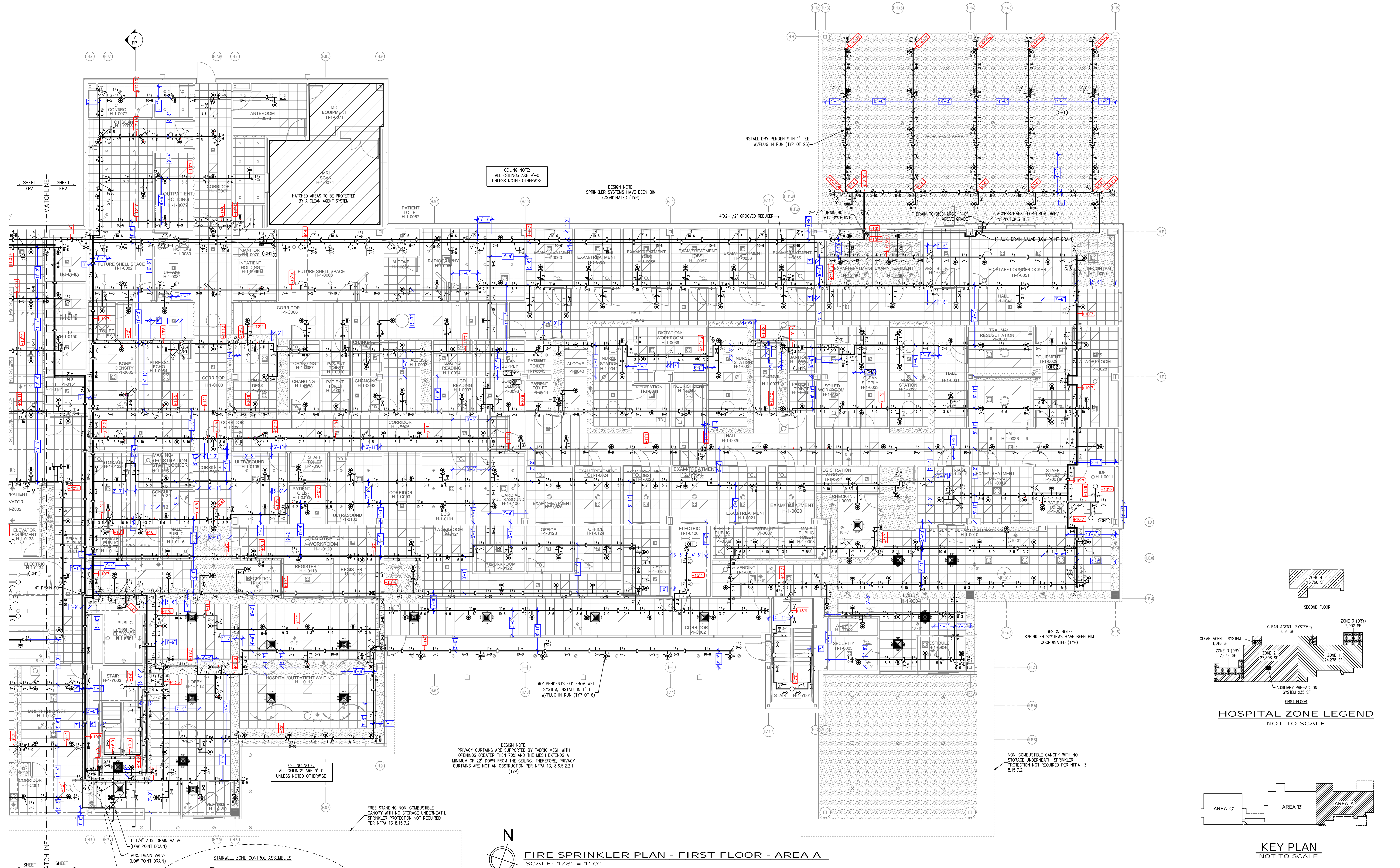
OWNER TO SUPPLY ADEQUATE HEAT IN ALL AREAS WHERE SPRINKLER PIPING MAY FREEZE.

SPRINKLER LEGEND		ESQUIT.	FINISH	TEMP.	K-FACT.	THREAD	SIN	MODEL	MANUF.	SYMBOL
QTY. IN HEAD BOX	QTY.	TYPE								

SCALE:	DRAWN BY:	DATE:	JOB NUMBER:
AS NOTED			
INS. REVIEW:	CHECKED:	AREA SHOWN:	SHEET NO.:
		DETAILS	FP 1 of 6

SEE PLANS

CARBON CAMPUS



CEILING NOTE:
ALL CEILING ARE 9'-0"
UNLESS NOTED OTHERWISE

DESIGN NOTE:
SPRINKLER SYSTEMS HAVE BEEN BIM
COORDINATED (TYP)

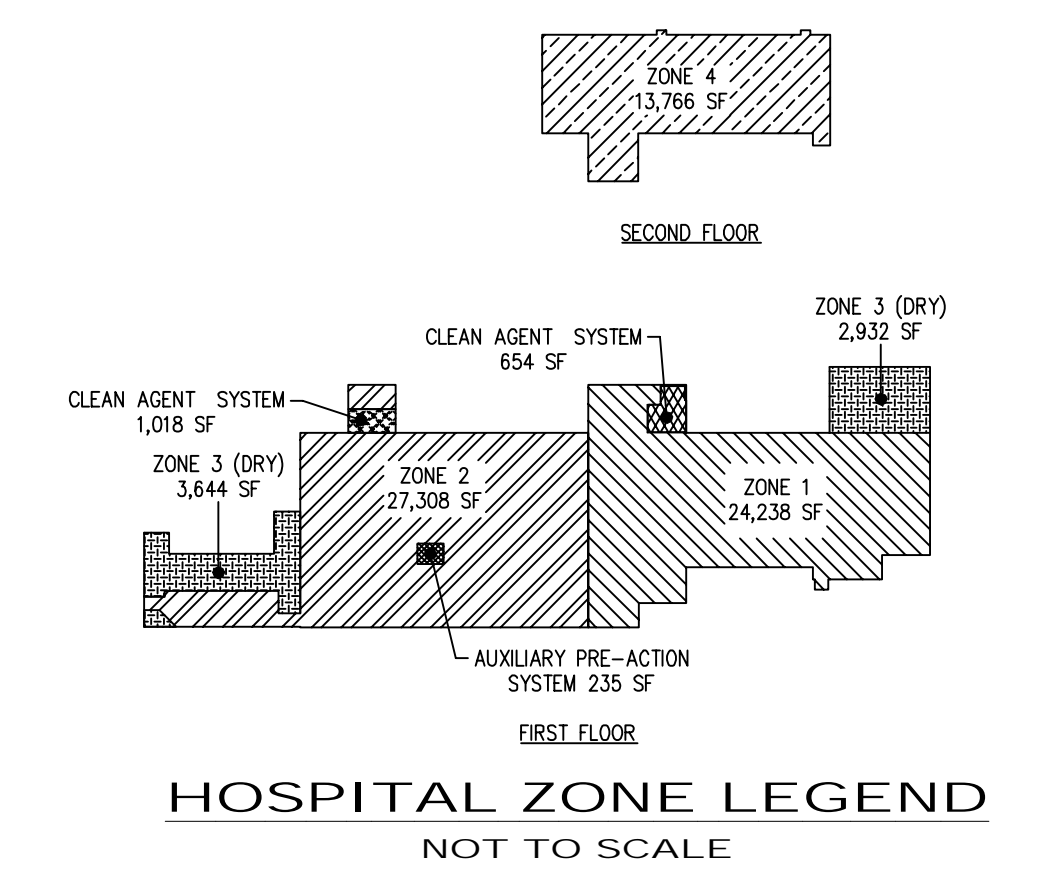
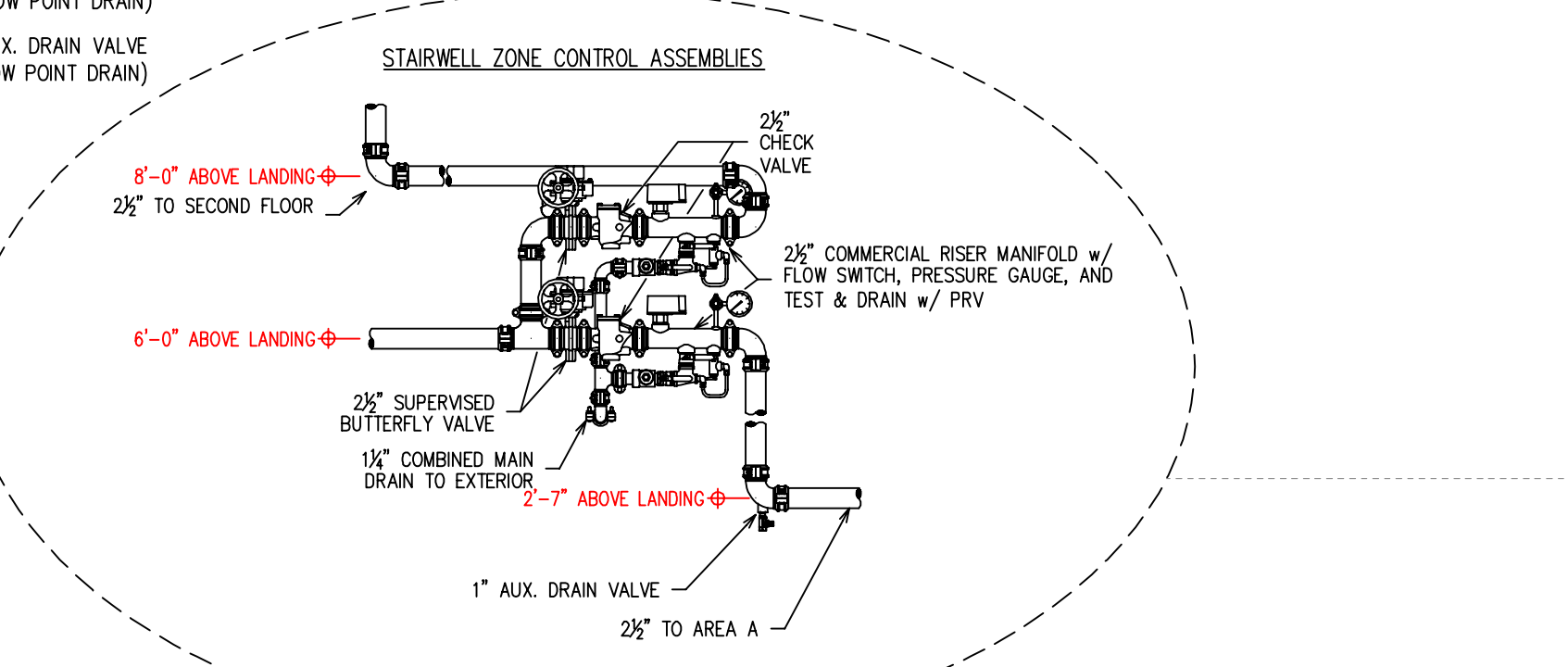
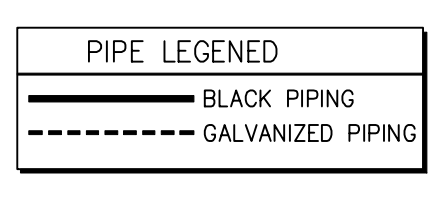
CEILING NOTE:
ALL CEILING ARE 9'-0"
UNLESS NOTED OTHERWISE

DESIGN NOTE:
PRIVACY CURTAINS ARE SUPPORTED BY FABRIC MESH WITH
OPENINGS GREATER THAN 70% AND THE MESH EXTENDS A
MINIMUM OF 27" DOWN FROM THE CEILING; THEREFORE PRIVACY
CURTAINS ARE NOT AN OBSTRUCTION PER NFPA 13, 5.6.5.2.2.1.
(TYP)

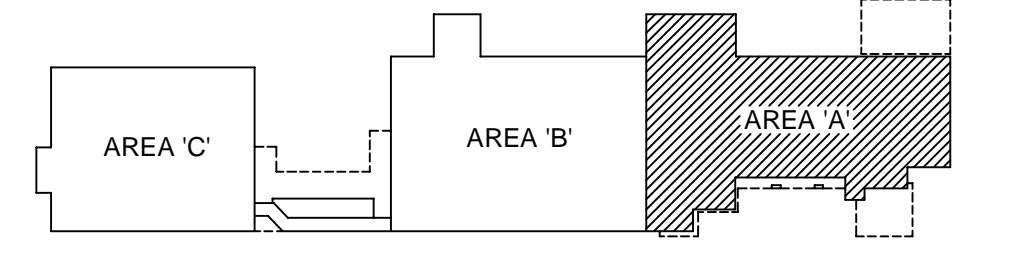
NON-COMBUSTIBLE CANOPY WITH NO
STORAGE UNDERNEATH. SPRINKLER
PROTECTION NOT REQUIRED PER NFPA 13
8.15.7.2.



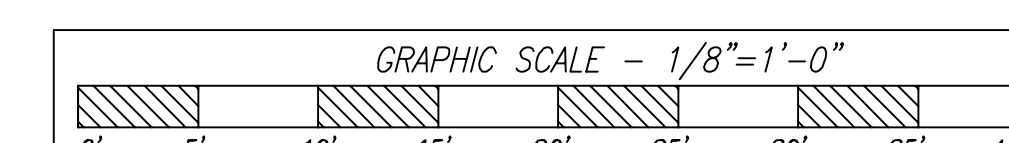
FIRE SPRINKLER PLAN - FIRST FLOOR - AREA A
SCALE: 1/8" = 1'-0"



HOSPITAL ZONE LEGEND
NOT TO SCALE



KEY PLAN
NOT TO SCALE



QTY IN HEAD BOX	QTY	TYPE	ESQUT	FINISH	TEMP	K-FACT	THREAD	SN	MODEL	MANUF.	SYMBOL	
	2	PENDENT	CONCEALED, WHITE COVER PLATE	BRASS	155	5.60	1/2"	V3802	FL-OR/C	WCTAULIC	●	
	2	35	PENDENT	CONCEALED, WHITE COVER PLATE	BRASS	200	5.60	1/2"	V3802	FL-OR/C	WCTAULIC	●
	X	33	DRY PENDANT	CONCEALED, WHITE COVER PLATE	BRASS	200	5.60	1"	V3302	FL-OR/C DRY	WCTAULIC	●
	X	2	DRY PENDANT	EXTENDED ESCHUTCHCON	CHROME	200	5.60	1"	V3605	FL-SR DRY	WCTAULIC	●
	2	6	PENDENT	CONCEALED, WHITE COVER PLATE	BRASS	165	8.00	3/4"	RA3417	GS-BOF	RELIABLE	●
	1	4	PENDENT	FLUSH	BRASS	155	5.60	1/2"	V426	QR	WRINC	●
	1	50	UPRIGHT	NONE	BRASS	200	8.00	3/4"	V3402	FL-OR	WCTAULIC	●
	1	4	UPRIGHT	NONE	BRASS	286	8.00	3/4"	V3402	FL-OR	WCTAULIC	●
	2	37	UPRIGHT	NONE	BRASS	200	5.60	1/2"	V2704	FL-OR	WCTAULIC	●
	2	24	UPRIGHT	NONE, ON SPRIG	BRASS	200	5.60	1/2"	V2704	FL-OR	WCTAULIC	●
	2	2	SIDEWALL	NONE	BRASS	200	5.60	1/2"	V2710	FL-OR/SW	WCTAULIC	●

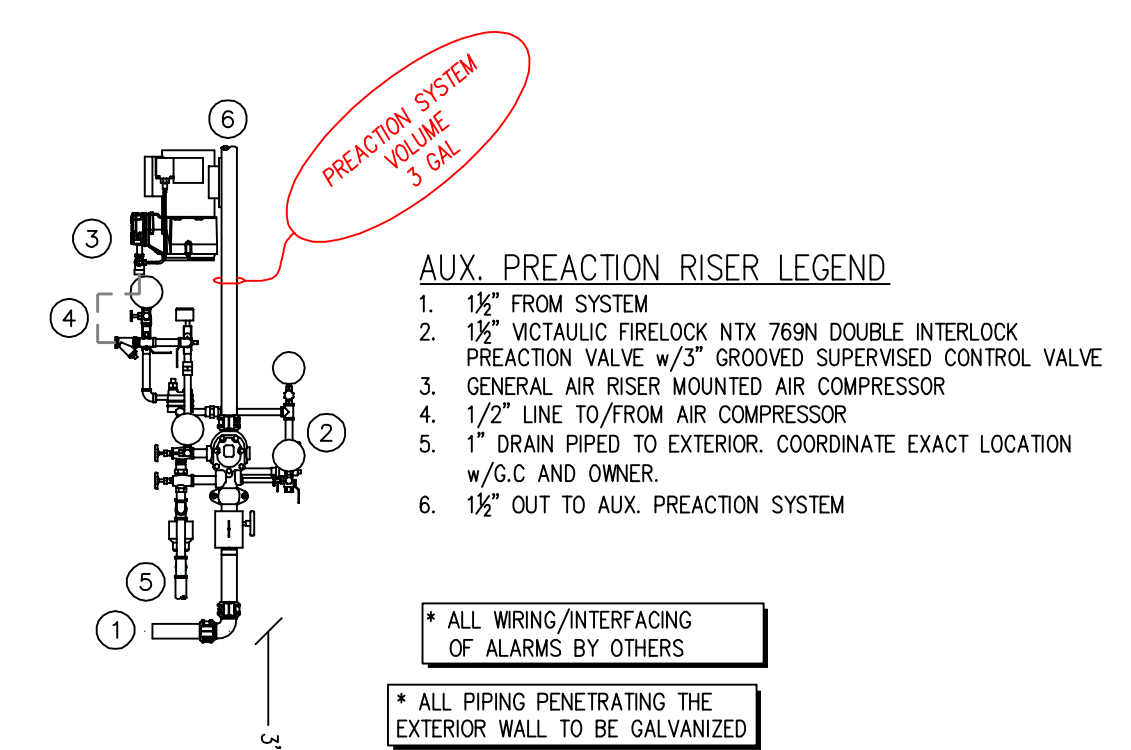
REVISIONS		DESCRIPTION	JOB NO.	DATE	NO.

OWNER TO SUPPLY ADEQUATE HEAT IN ALL AREAS WHERE SPRINKLER PIPING MAY FREEZE.

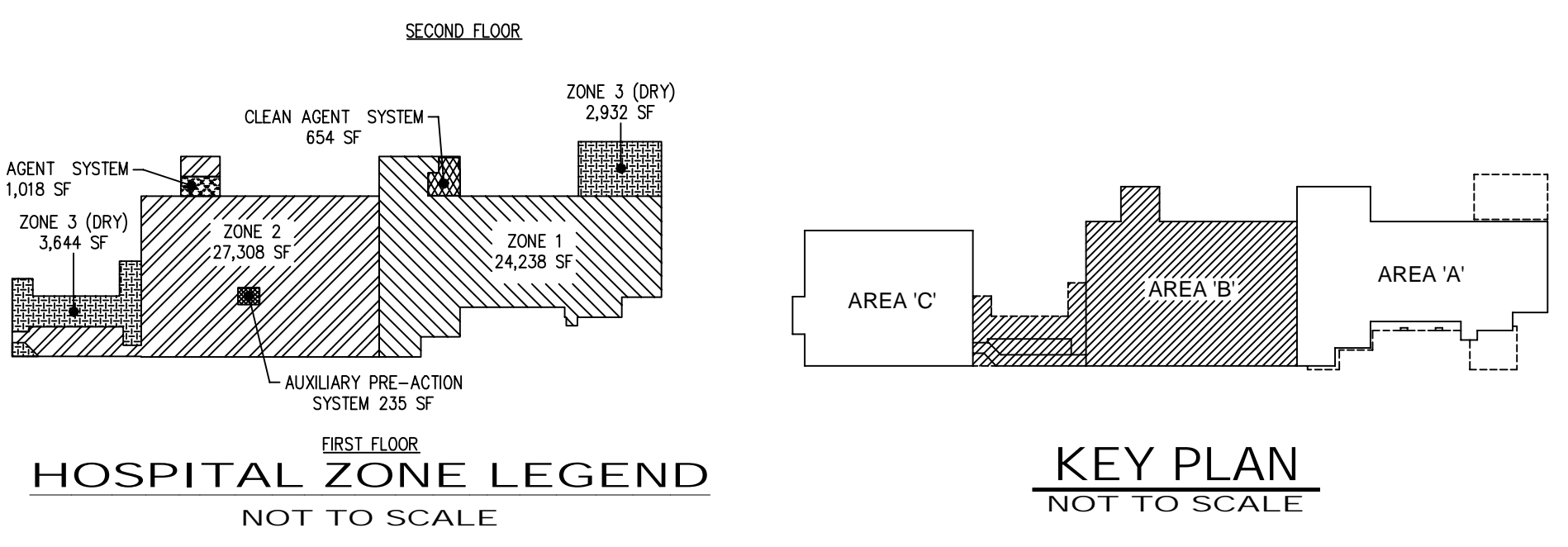
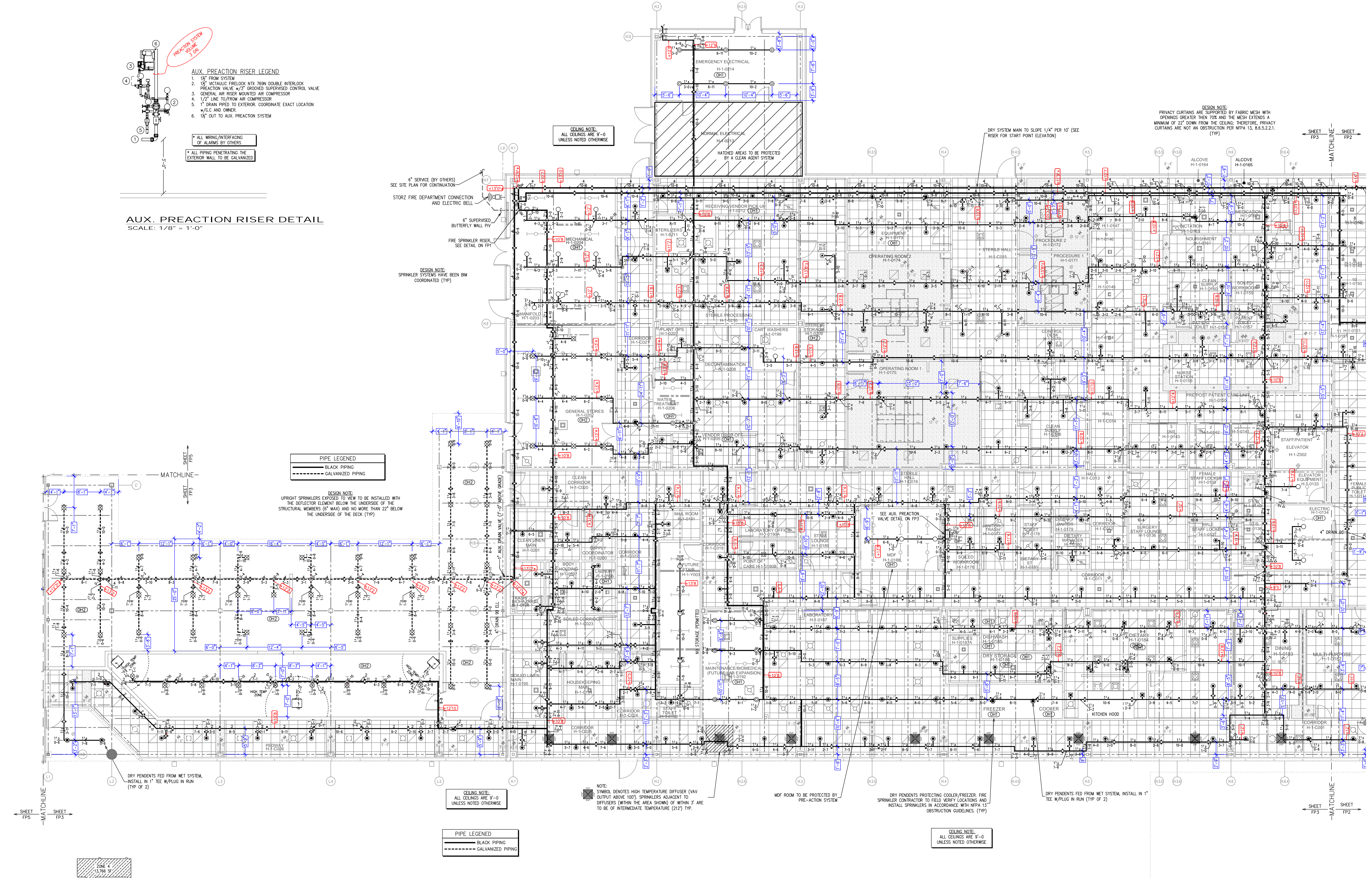
SPRINKLER LEGEND (BIS TOTAL FOR HOSPITAL)

SCALE: AS NOTED
DRAWN BY: []
DATE: []
JOB NUMBER: []
CHECKED: []
AREA SHOWN: FIRST - AREA A
SHEET NO.: FP 2 of 6

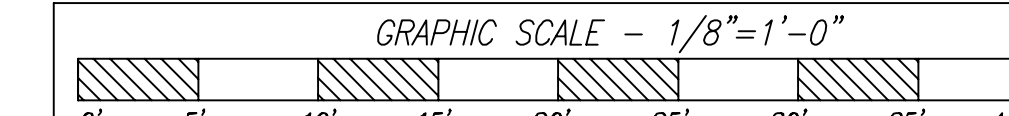
CARBON CAMPUS



AUX. PREACTION RISER DETAIL
SCALE: 1/8" = 1'-0"



FIRE SPRINKLER PLAN - FIRST FLOOR - AREA B
SCALE: 1/8" = 1'-0"



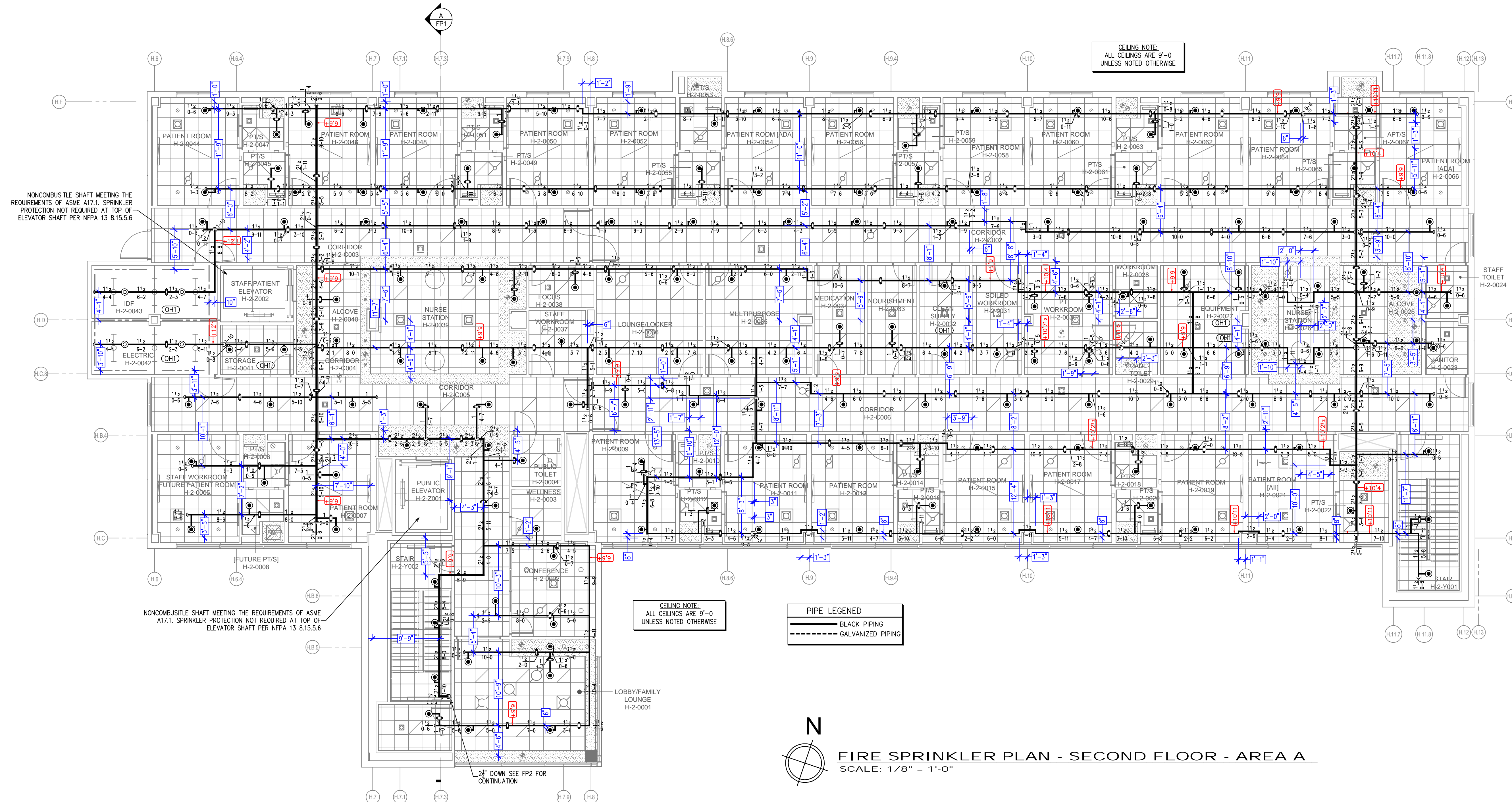
NO.	DESCRIPTION	DATE	NO.
1			
2			

OWNER TO SUPPLY ADEQUATE HEAT IN ALL AREAS WHERE SPRINKLER PIPING MAY FREEZE.

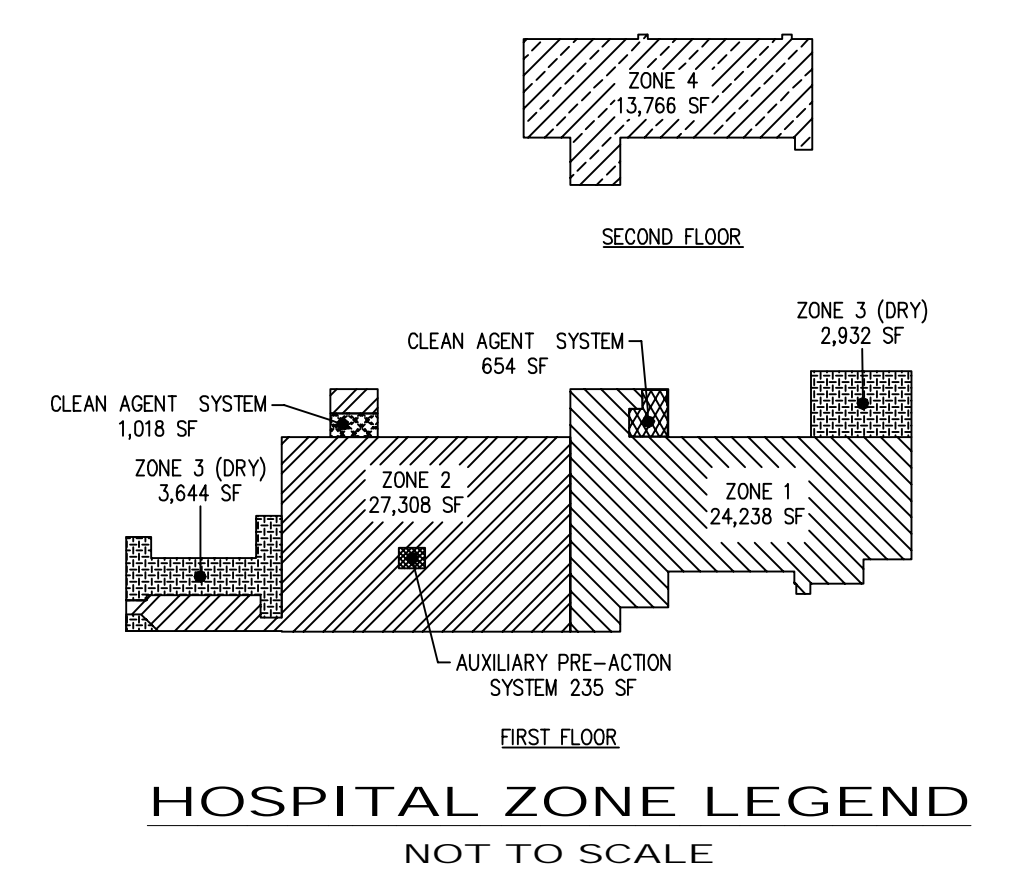
QTY IN HEAD BOX	QTY.	TYPE	ESQIT	FINISH	TEMP	K-FACT	THREAD	SN	MODEL	MANUF.	SYMBOL
2	618	PENDENT	CONCEALED, WHITE COVER PLATE	BRASS	155	5.60	1/2"	V3802	FL-OR/C	WCTAULIC	⊙
2	35	PENDENT	CONCEALED, WHITE COVER PLATE	BRASS	200	5.60	1/2"	V3802	FL-OR/C	WCTAULIC	⊙
X	33	DRY PENDANT	CONCEALED, WHITE COVER PLATE	BRASS	200	5.60	1"	V3302	FL-OR/D DRY	WCTAULIC	⊙
X	2	DRY PENDANT	EXTENDED ESCHUTCHCON	CHROME	200	5.60	1"	V3605	FL-SR DRY	WCTAULIC	⊙
2	6	PENDENT	CONCEALED, WHITE COVER PLATE	BRASS	165	8.00	3/4"	RA3417	GS-60"	RELIABLE	⊙
1	4	PENDENT	FLUSH	BRASS	155	5.60	1/2"	V426	QR	WCTAULIC	⊙
1	50	UPRIGHT	NONE	BRASS	200	8.00	1/2"	V3402	FL-OR	WCTAULIC	⊙
1	4	UPRIGHT	NONE	BRASS	286	8.00	3/4"	V3402	FL-OR	WCTAULIC	⊙
2	37	UPRIGHT	NONE	BRASS	200	5.60	1/2"	V2704	FL-OR	WCTAULIC	⊙
2	24	UPRIGHT	NONE, ON SPRIG	BRASS	200	5.60	1/2"	V2704	FL-OR	WCTAULIC	⊙
2	2	SIDEWALL	NONE	BRASS	200	5.60	1/2"	V2710	FL-OR/SW	WCTAULIC	⊙

CARBON CAMPUS

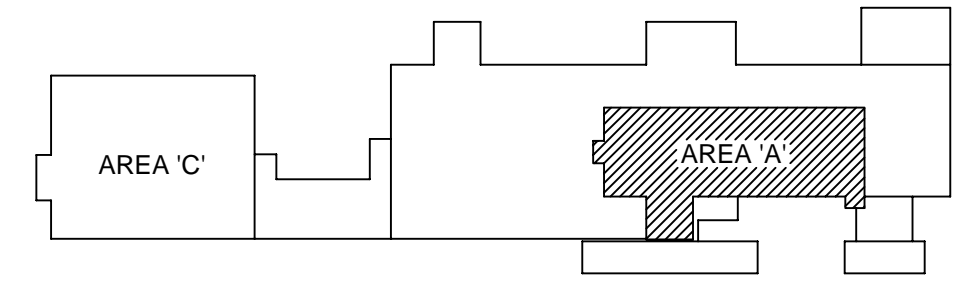
SCALE: AS NOTED
DRAWN BY: JNS
DATE: REVIEW: CTR
JOB NUMBER: AREA SHOWN: FIRST - AREA B
SHEET NO.: FP 3 of 6



FIRE SPRINKLER PLAN - SECOND FLOOR - AREA A
SCALE: 1/8" = 1'-0"



HOSPITAL ZONE LEGEND
NOT TO SCALE



KEY PLAN
NOT TO SCALE

GRAPHIC SCALE - 1/8" = 1'-0"

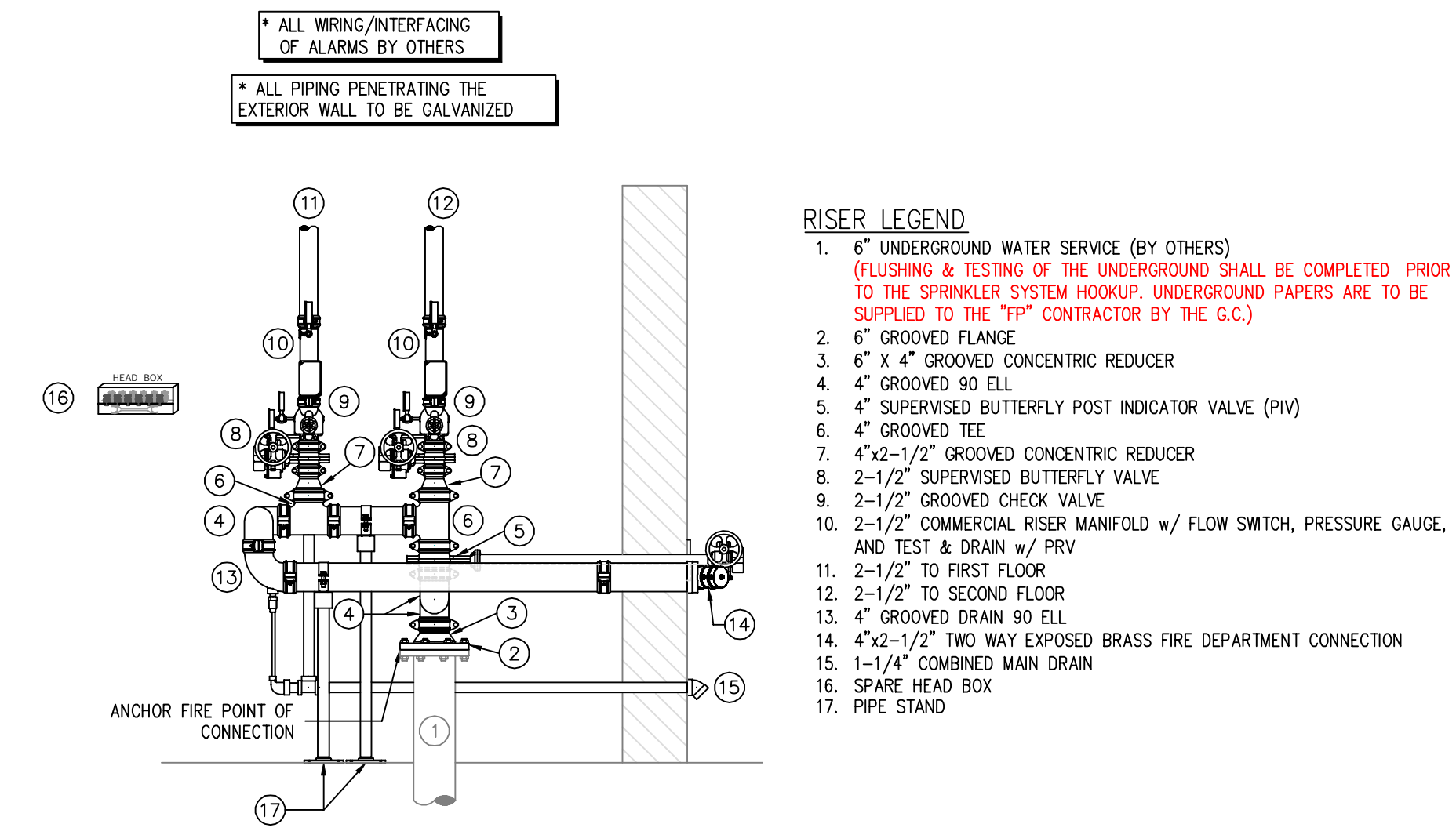
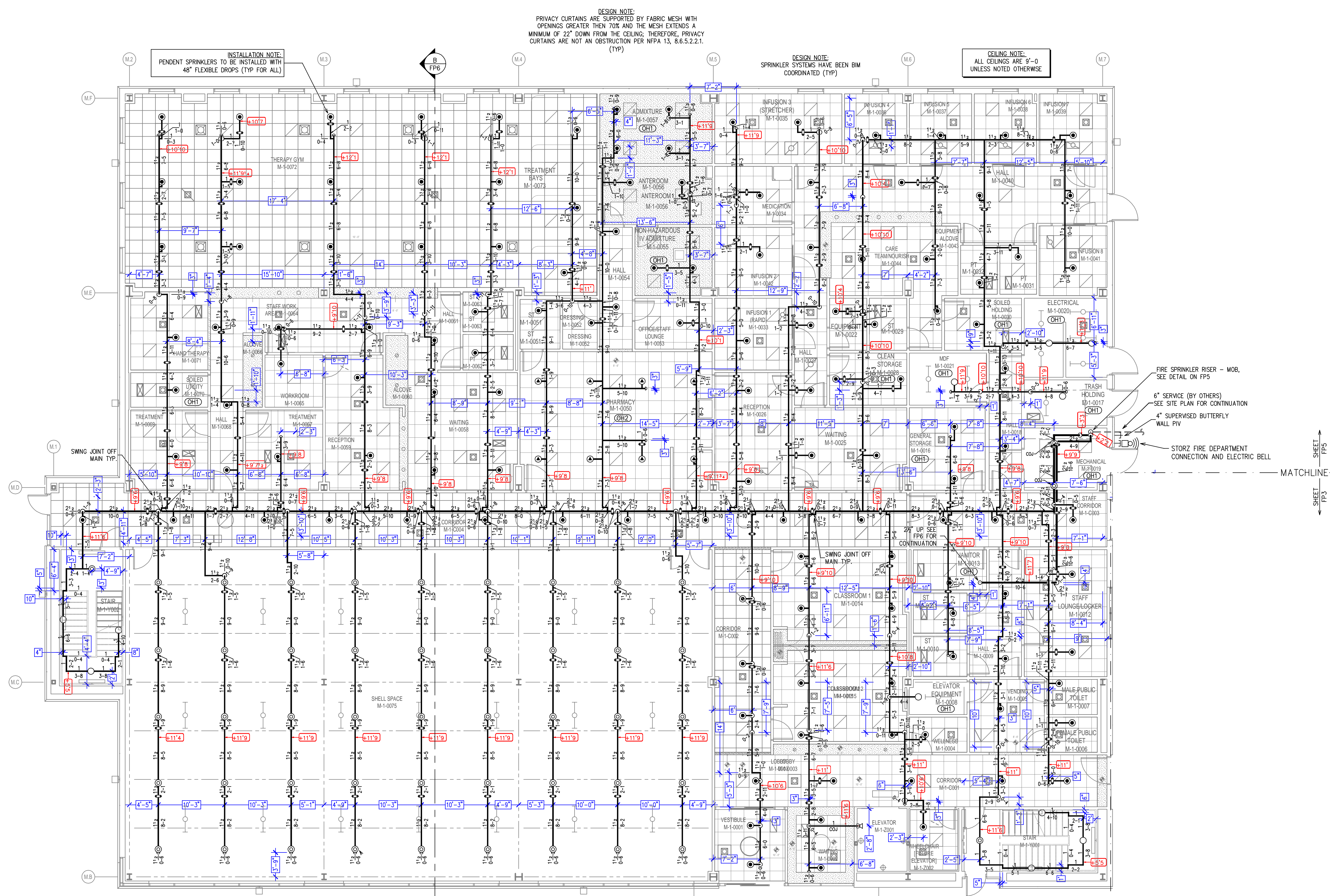
NO.	DATE	DESCRIPTION
1		ISSUED FOR PERMIT
2		REVISED PER COMMENTS

OWNER TO SUPPLY ADEQUATE HEAT IN ALL AREAS WHERE SPRINKLER PIPING MAY FREEZE.

QTY. IN HEAD BOX	QTY.	TYPE	ESQUIT.	FINISH	TEMP.	K-FACT.	THREAD	SN	MODEL	MANUF.	SYMBOL
2	618	PENDENT	CONCEALED, WHITE COVER PLATE	BRASS	155	5.60	1/2"	V3802	FL-OR/C	WCTAULIC	⊙
2	35	PENDENT	CONCEALED, WHITE COVER PLATE	BRASS	200	5.60	1/2"	V3802	FL-OR/C	WCTAULIC	⊙
X	33	DRY PENDENT	CONCEALED, WHITE COVER PLATE	BRASS	200	5.60	1"	V3302	FL-OR/C DRY	WCTAULIC	⊙
X	2	DRY PENDENT	EXTENDED ESCHUTCHCON	CHROME	200	5.60	1"	V3605	FL-SR DRY	WCTAULIC	⊙
2	6	PENDENT	CONCEALED, WHITE COVER PLATE	BRASS	185	8.00	3/4"	RA3417	CS-BOF	RELIABLE	⊙
1	4	PENDENT	FLUSH	BRASS	155	5.60	1/2"	V426	OR	WING	⊙
1	50	UPRIGHT	NONE	BRASS	200	8.00	3/4"	V3402	FL-OR	WCTAULIC	⊙
1	4	UPRIGHT	NONE	BRASS	286	8.00	3/4"	V3402	FL-OR	WCTAULIC	⊙
2	37	UPRIGHT	NONE	BRASS	200	5.60	1/2"	V2704	FL-OR	WCTAULIC	⊙
2	24	UPRIGHT	NONE, ON SPRIG	BRASS	200	5.60	1/2"	V2704	FL-OR	WCTAULIC	⊙
2	2	SIDEWALL	NONE	BRASS	200	5.60	1/2"	V2710	FL-OR/SW	WCTAULIC	⊙

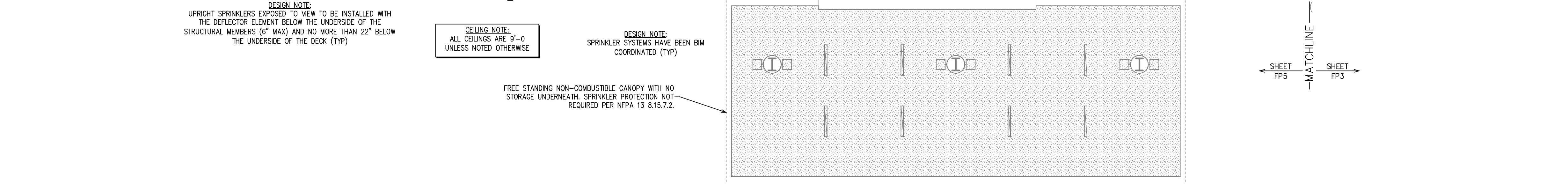
SCALE:	DRAWN BY:	DATE:	JOB NUMBER:
AS NOTED			
INS. REVIEW:	CHECKED:	AREA SHOWN:	SHEET NO.:
		SECOND - AREA A	FP 4 of 6

CARBON CAMPUS

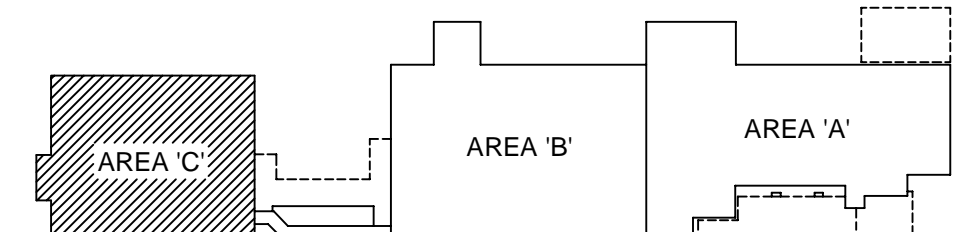


FIRE SPRINKLER RISER DETAIL - MOB
SCALE: 1/2" = 1'-0"

- RISER LEGEND**
- 6" UNDERGROUND WATER SERVICE (BY OTHERS) (FLUSHING & TESTING OF THE UNDERGROUND SHALL BE COMPLETED PRIOR TO THE SPRINKLER SYSTEM HOOKUP; UNDERGROUND PAPERS ARE TO BE SUPPLIED TO THE 7TH CONTRACTOR BY THE G.C.)
 - 6" GROOVED FLANGE
 - 6" x 4" GROOVED CONCENTRIC REDUCER
 - 4" GROOVED 90 ELL
 - 4" SUPERVISED BUTTERFLY POST INDICATOR VALVE (PIV)
 - 4" GROOVED TEE
 - 4" x 2-1/2" GROOVED CONCENTRIC REDUCER
 - 2-1/2" SUPERVISED BUTTERFLY VALVE
 - 2-1/2" GROOVED CHECK VALVE
 - 2-1/2" COMMERCIAL RISER MANIFOLD w/ FLOW SWITCH, PRESSURE GAUGE, AND TEST & DRAIN w/ PRV
 - 2-1/2" TO FIRST FLOOR
 - 2-1/2" TO SECOND FLOOR
 - 4" GROOVED DRAIN 90 ELL
 - 4" x 2-1/2" TWO WAY EXPOSED BRASS FIRE DEPARTMENT CONNECTION
 - 1-1/4" COMBINED MAIN DRAIN
 - SPARE HEAD BOX
 - PIPE STAND



MOB ZONE LEGEND
NOT TO SCALE



KEY PLAN
NOT TO SCALE

FIRE SPRINKLER PLAN - FIRST FLOOR - AREA C
SCALE: 1/8" = 1'-0"



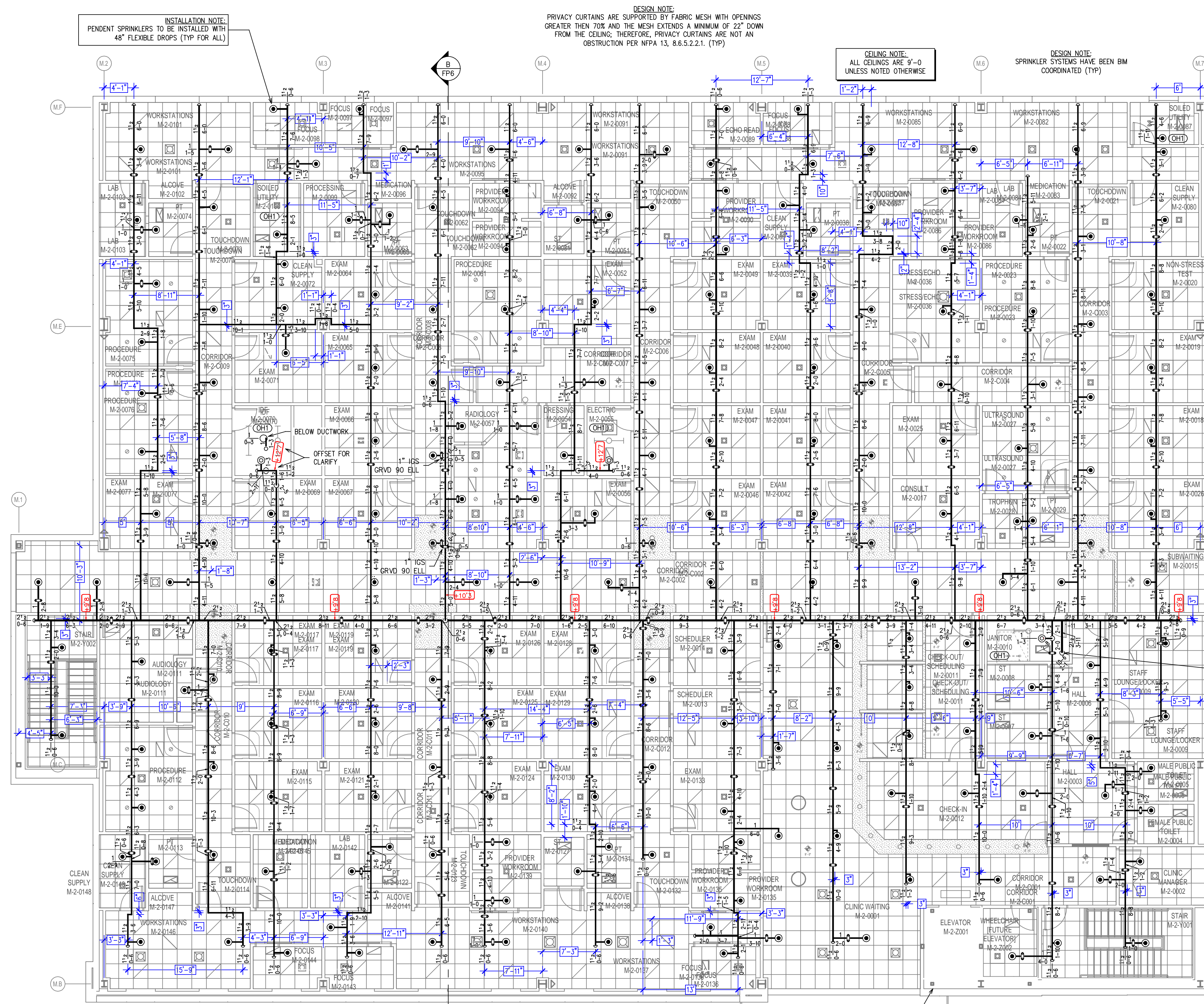
OWNER TO SUPPLY ADEQUATE HEAT IN ALL AREAS WHERE SPRINKLER PIPING MAY FREEZE.

REVISIONS

NO.	DESCRIPTION	JOB NO.	DATE

SPRINKLER LEGEND (406 TOTAL FOR MOB)

QTY. IN HEAD BOX	QTY.	TYPE	ESQUIT.	FINISH	TEMP.	K-FACTOR	THREAD	SN	MODEL	MANUF.	SYMBOL
2	333	PENDENT	CONCEALED, WHITE COVER PLATE	BRASS	155	5.60	1/2"	V3802	FL-OR/C	WCTAULIC	⊙
2	8	PENDENT	CONCEALED, WHITE COVER PLATE	BRASS	165	8.00	3/4"	RA3417	GS-80F	RELIABLE	⊙
2	12	UPRIGHT	NONE	BRASS	200	5.60	1/2"	V2704	FL-OR	WCTAULIC	⊙
2	52	UPRIGHT	NONE, ON SPRIG	BRASS	200	5.60	1/2"	V2704	FL-OR	WCTAULIC	⊙
2	1	SIDEWALL	NONE	BRASS	200	5.60	1/2"	V2710	FL-OR/SW	WCTAULIC	<1



INSTALLATION NOTE:
PENDENT SPRINKLERS TO BE INSTALLED WITH
48" FLEXIBLE DROPS (TYP FOR ALL)

DESIGN NOTE:
PRIVACY CURTAINS ARE SUPPORTED BY FABRIC MESH WITH OPENINGS
GREATER THEN 70% AND THE MESH EXTENDS A MINIMUM OF 22" DOWN
FROM THE CEILING; THEREFORE, PRIVACY CURTAINS ARE NOT AN
OBSTRUCTION PER NFPA 13, 8.6.5.2.2.1. (TYP)

CEILING NOTE:
ALL CEILINGS ARE 9'-0"
UNLESS NOTED OTHERWISE

DESIGN NOTE:
SPRINKLER SYSTEMS HAVE BEEN BIM
COORDINATED (TYP)

DESIGN NOTE:
PRIVACY CURTAINS ARE SUPPORTED BY FABRIC MESH WITH
OPENINGS GREATER THEN 70% AND THE MESH EXTENDS A
MINIMUM OF 22" DOWN FROM THE CEILING; THEREFORE, PRIVACY
CURTAINS ARE NOT AN OBSTRUCTION PER NFPA 13, 8.6.5.2.2.1.
(TYP)

DESIGN NOTE:
SPRINKLER SYSTEMS HAVE BEEN BIM
COORDINATED (TYP)

CEILING NOTE:
ALL CEILINGS ARE 9'-0"
UNLESS NOTED OTHERWISE

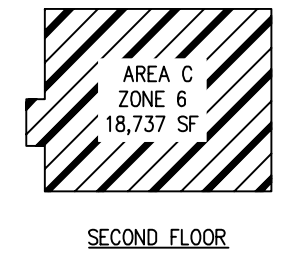
NONCOMBUSTIBLE SHAFT MEETING THE
REQUIREMENTS OF ASME A17.1, SPRINKLER
PROTECTION NOT REQUIRED AT TOP OF
ELEVATOR SHAFT PER NFPA 13 8.15.5.6

25' FROM BELOW
SEE PP-5 FOR CONTINUATION

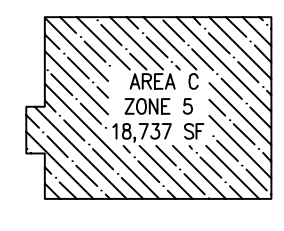


FIRE SPRINKLER PLAN - SECOND FLOOR - AREA C

SCALE: 1/8" = 1'-0"



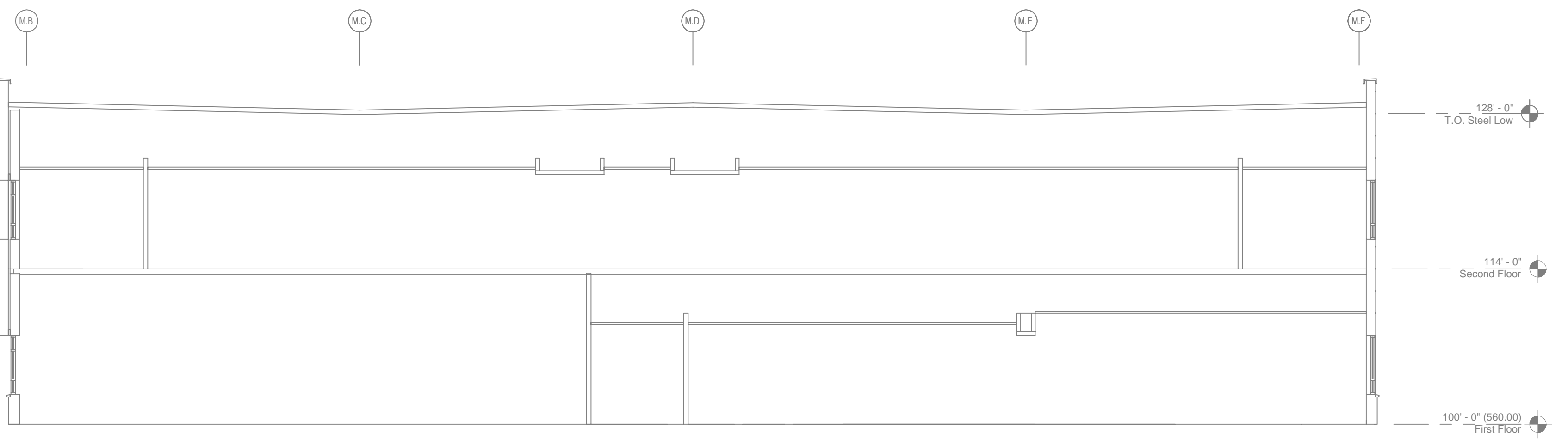
AREA C
ZONE 6
18,737 SF



AREA C
ZONE 5
18,737 SF

MOB ZONE LEGEND

NOT TO SCALE



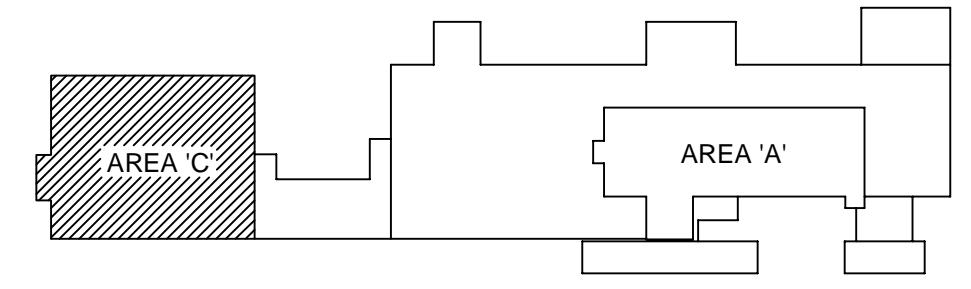
BUILDING SECTION "B"
SCALE: 1/8" = 1'-0"

GRAPHIC SCALE - 1/8" = 1'-0"

REVISIONS		NO.	DATE	DESCRIPTION

OWNER TO SUPPLY ADEQUATE HEAT IN ALL AREAS WHERE SPRINKLER PIPING MAY FREEZE.

SPRINKLER LEGEND (406 TOTAL FOR MOB)											
QTY. IN HEAD BOX	QTY.	TYPE	ESQUIT.	FINISH	TEMP.	K-FACT.	THREAD	SN	MODEL	MANUF.	SYMBOL
2	333	PENDENT	CONCEALED, WHITE COVER PLATE	BRASS	155	5.60	1/2"	V3802	FL-OR/C	WCTAULIC	⊙
2	8	PENDENT	CONCEALED, WHITE COVER PLATE	BRASS	165	8.00	3/4"	RA3417	GS-80F	RELIABLE	⊙
2	12	UPRIGHT	NONE	BRASS	200	5.60	1/2"	V2704	FL-OR	WCTAULIC	⊙
2	52	UPRIGHT	NONE, ON SPRIG	BRASS	200	5.60	1/2"	V2704	FL-OR	WCTAULIC	⊙
2	1	SIDEWALL	NONE	BRASS	200	5.60	1/2"	V2710	FL-OR/SW	WCTAULIC	<1



KEY PLAN
NOT TO SCALE

CARBON CAMPUS

SCALE: AS NOTED	DRAWN BY: 	DATE: 	JOB NUMBER:
INS. REVIEW: 	CHECKED: 	AREA SHOWN: SECOND - AREA C	SHEET NO.: FP 6 of 6