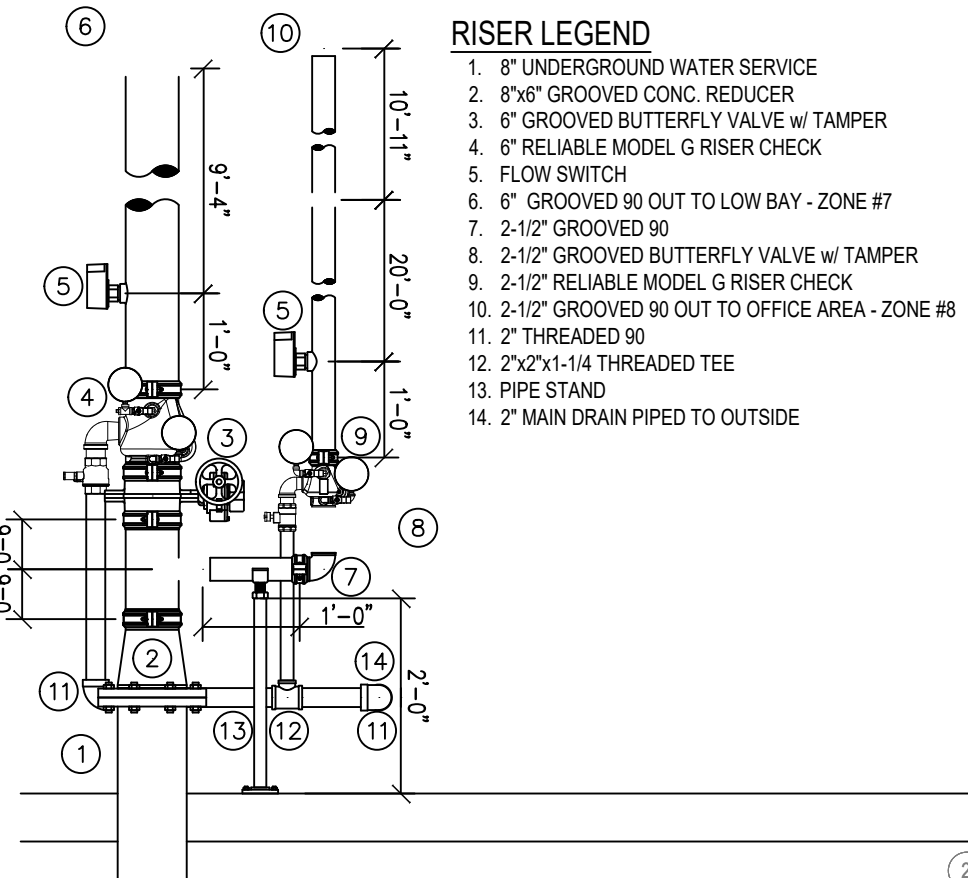


SYM	CNT	POSITION	FINISH	TEMP	K	NPT	SIN	MF/G	MODEL#	ESCUICHEON	HEAD BOX (2 min)
17	1	PENDENT	BRASS	205	28.00	1"	WKS14	VIKING	WV-ESFR	N/A	4
18	1	PENDENT	CHROME	155	5.60	1/2"	WKS021	VIKING	MICROFAST	SEMI-RECESS	2
19	1	PENDENT	CHROME	155	11.20	3/4"	WKS34	VIKING	WKEC	SEMI-RECESS	2

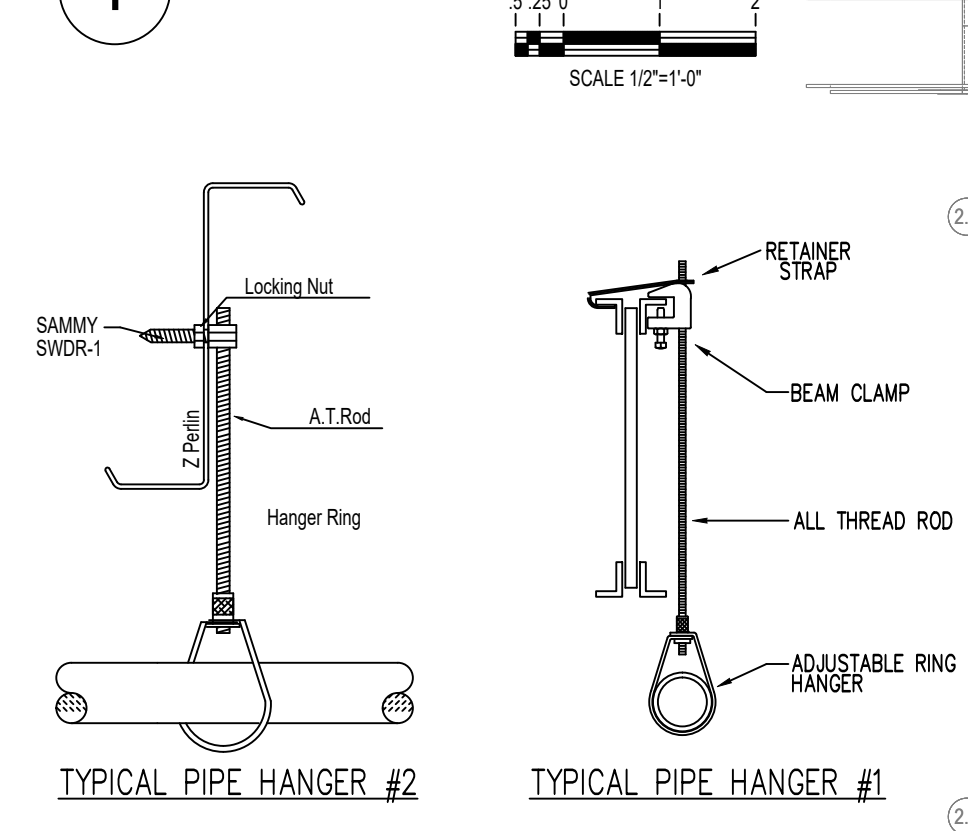
327 TOTAL FOR PAGE
6,443 TOTAL FOR JOB

SPRINKLER HEAD LEGEND

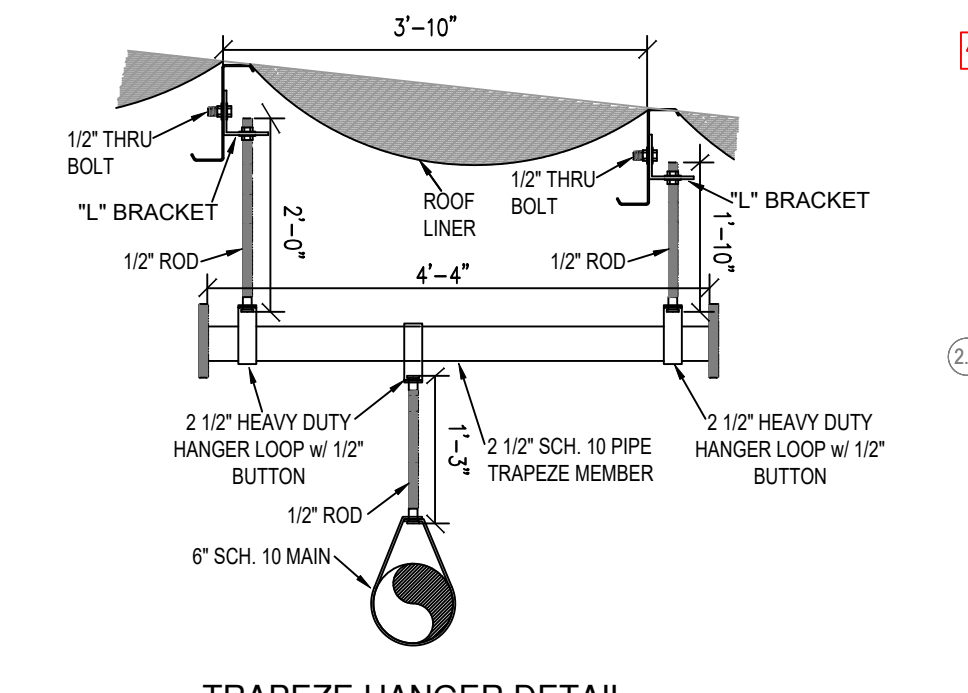


- RISER LEGEND**
- 8" UNDERGROUND WATER SERVICE
 - 6" GROOVED CONC. REDUCER
 - 6" GROOVED BUTTERFLY VALVE w/ TAMPER
 - 6" RELIABLE MODEL G RISER CHECK
 - FLOW SWITCH
 - 6" GROOVED 90 OUT TO LOW BAY - ZONE #7
 - 2-1/2" GROOVED 90
 - 2-1/2" GROOVED BUTTERFLY VALVE w/ TAMPER
 - 2-1/2" RELIABLE MODEL G RISER CHECK
 - 2-1/2" GROOVED 90 OUT TO OFFICE AREA - ZONE #8
 - 2" THREADED 90
 - 2" X 2-1/4" THREADED TEE
 - PIPE STAND
 - 2" MAIN DRAIN PIPED TO OUTSIDE

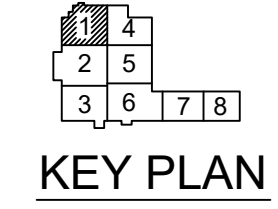
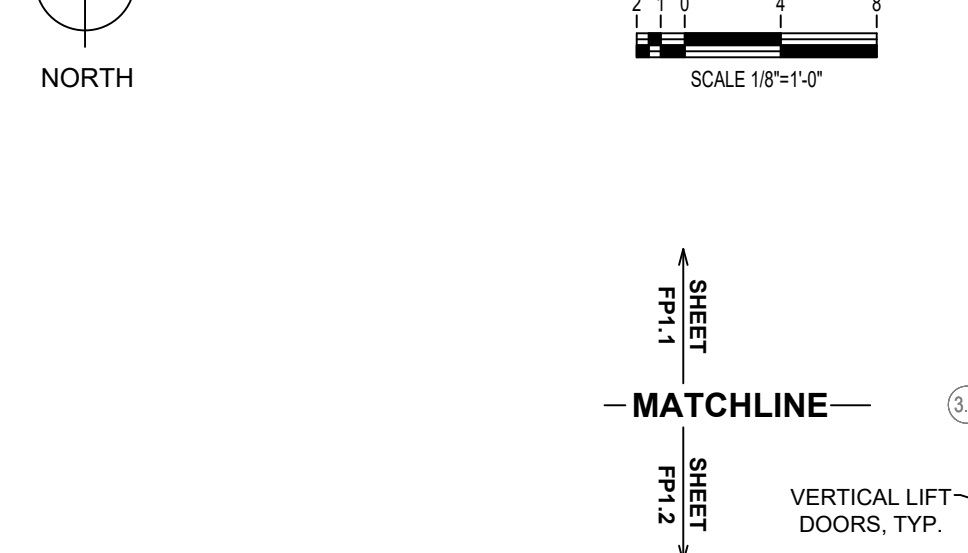
1 RISER DETAIL



NOTE:
LOW-BAY SPRINKLER SYSTEM IS
DESIGNED TO PROTECT GLASS I-IV AND
CARTONED UNEXPANDED PLASTICS PER
SPRINKLER MANUFACTURE'S DATA SHEET.



FIRE SPRINKLER PLAN AREA 1



NO.	DATE	REVISIONS	DESCRIPTION
1	05/04/2021		

DRAWING TITLE
**FIRE SPRINKLER
PLAN -
LOW BAY &
2ND LEVEL OFFICE**

DRAWN BY
**JASON
BOSMA**

SCALE
1/8" = 1'-0"

DATE
05/04/2021

JOB NUMBER
11783

**NEW DISTRIBUTION CENTER
JACKSON TWO
CROCKETT COUNTY, TENNESSEE**

SHEET NUMBER
FP1.1

CALC PLACARD

Design Area # 10 HAZARD: LIGHT
 Zone: 6 System Type: WET
 Location: SHIPPING OFFICE
 Flowing Outlets: 5
 Density: 0.10 Remote Area: 953
 Req'd @ BOR
 Flow: 203.2 gpm @ 75.4 psi
 Calculation Safety: 83 psi
 Includes 100 gpm Hose allowance

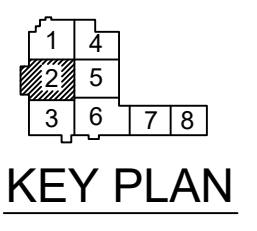
NOTE:
 1500 S.F. REDUCED BY 40% TO 900
 S.F. PER NFPA 13 FIG. 19.3.3.2.3.1 DUE
 TO THE USE OF QUICK RESPONSE
 SPRINKLERS AND A 10'-0" CEILING
 HEIGHT

SYM	CNT	POSITION	FINISH	TEMP	K	NPT	SIN	MFG	MODEL#	ESCUTCHEON	HEAD BOX (2 mm)
●	391	PENDENT	BRASS	205	28.00	1"	VK514	VIKING	VK-ESFR	N/A	4
○	20	PENDENT	CHROME	155	11.20	3/4"	VK534	VIKING	VK-FC	SEMI-RECESS	2
○	2	PENDENT	CHROME	155	5.60	1/2"	VK3021	VIKING	MICROFA	SEMI-RECESS	2
◁	13	SIDEWALL	CHROME	155	5.60	1/2"	VK305	VIKING	MICROFA	SEMI-RECESS	2

426 TOTAL FOR PAGE
 6,435 TOTAL FOR JOB

SPRINKLER HEAD LEGEND

LOW POINT DRAIN /
 INSPECTOR'S TEST



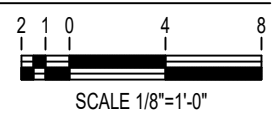
KEY PLAN



NOTE:
 LOW-BAY SPRINKLER SYSTEM IS
 DESIGNED TO PROTECT CLASS I-IV AND
 CARTONED UNEXPANDED PLASTICS PER
 SPRINKLER MANUFACTURER'S DATA SHEET.

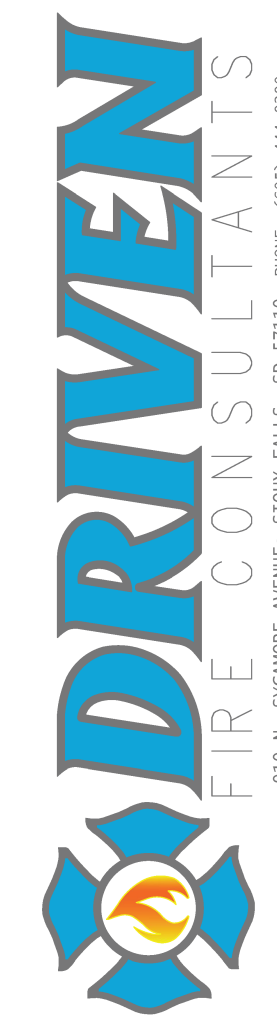


FIRE SPRINKLER PLAN AREA 2



SCALE 1/8"=1'-0"

SHEET
 FP1.2
 MATCHLINE
 SHEET
 FP1.3



NO.	DATE	DESCRIPTION
1	2/2/22	

DRAWING TITLE
**FIRE SPRINKLER
 PLAN -
 LOW BAY**

DRAWN BY
**JASON
 BOSMA**

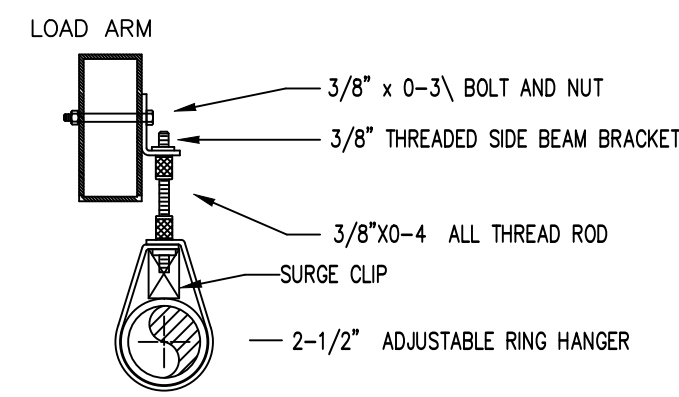
SCALE
 1/8" = 1'-0"

DATE
 05/04/2021

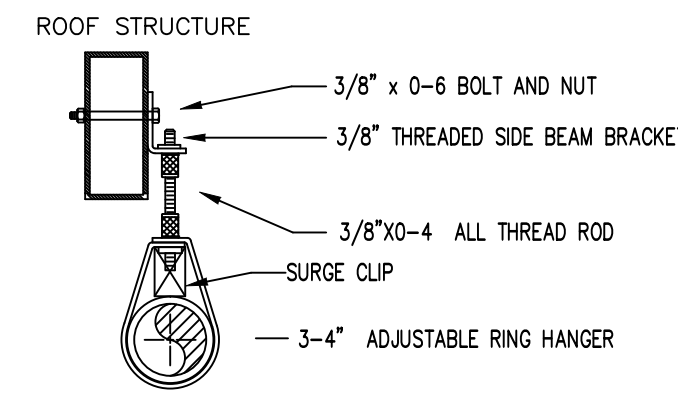
JOB NUMBER
 11783

**NEW DISTRIBUTION CENTER
 JACKSON TWO
 CROCKETT COUNTY, TENNESSEE**

SHEET NUMBER
FP1.2



HANGER #03
THREADED SIDE BEAM BRACKET, ROD & RING
 2-1/2" BRANCHLINE HANGERS
USE THIS HANGER FOR ALL PIPING IN RACKS



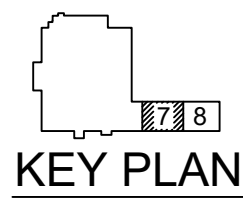
HANGER #03
THREADED SIDE BEAM BRACKET, ROD & RING
 3" & 4" MAIN HANGERS

SYM	CNT	POSITION	FINISH	TEMP	K	NPT	SIN	MFG.	MODEL#	ESCUTCHEON	HEAD BOX (2 min)
●	810	PENDENT	BRASS	165	22.40	1"	RA1011	RELIABLE	HL-22	N/A	4
810 TOTAL FOR PAGE											
6,443 TOTAL FOR JOB											

SPRINKLER HEAD LEGEND

SHEET FP1.11 MATCHLINE SHEET FP1.12

NOTE:
 HIGH BAY SPRINKLER SYSTEM IS DESIGNED TO PROTECT CLASS I-IV AND CARTONED NONEXPANDED GROUP A PLASTICS PER NFPA 13 TABLE 25.8.2.7



FIRE SPRINKLER PLAN AREA 7 - IN-RACK LEVEL 12

NO.	DATE	DESCRIPTION
1	7/27/22	

DRAWING TITLE
FIRE SPRINKLER PLAN - HIGH BAY IN-RACK LEVEL 12

DRAWN BY
JASON BOSMA

SCALE
1/8" = 1'-0"

DATE
05/04/2021

JOB NUMBER
11783

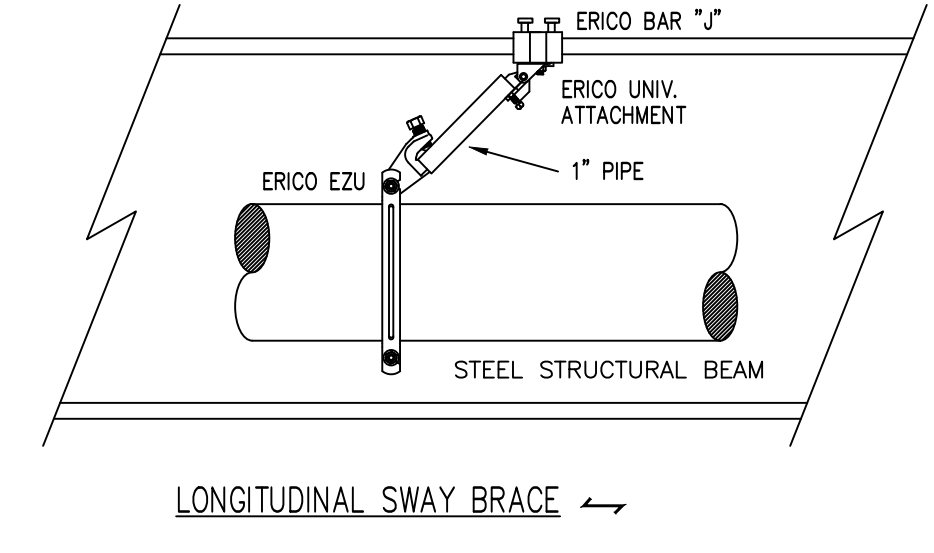
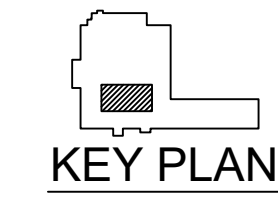
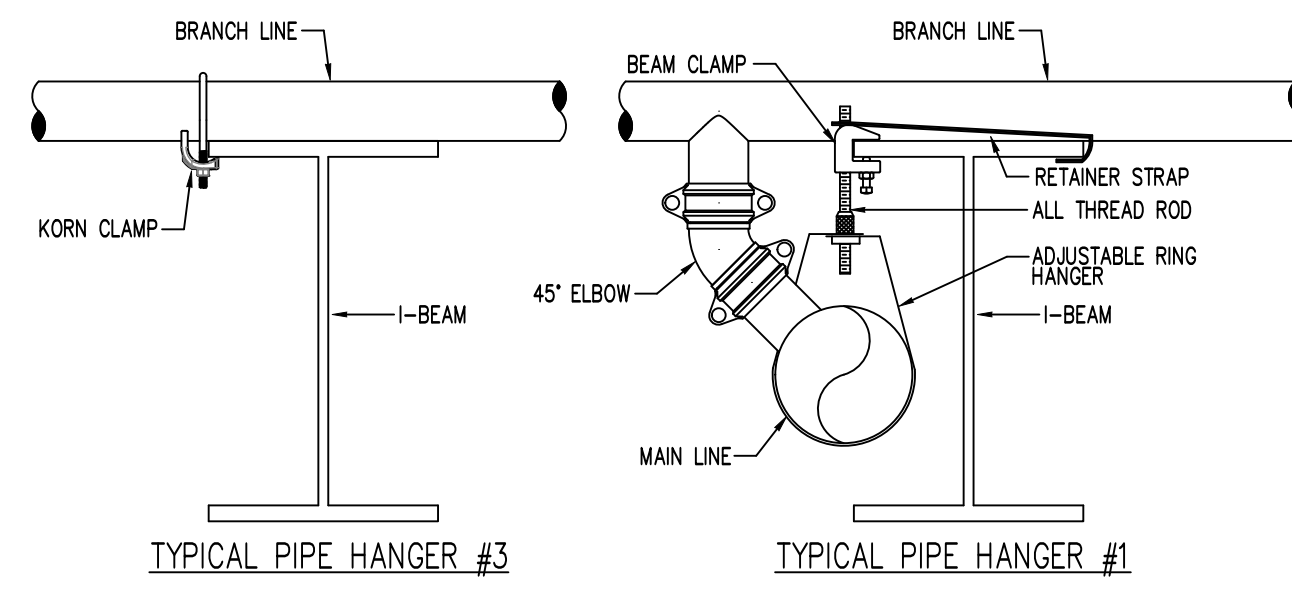
**NEW DISTRIBUTION CENTER
 JACKSON TWO
 CROCKETT COUNTY, TENNESSEE**

SHEET NUMBER
FP1.11

Design Area # 04 HAZARD: STORAGE
 Zone: 5 System Type: WET
 Location: VAULT

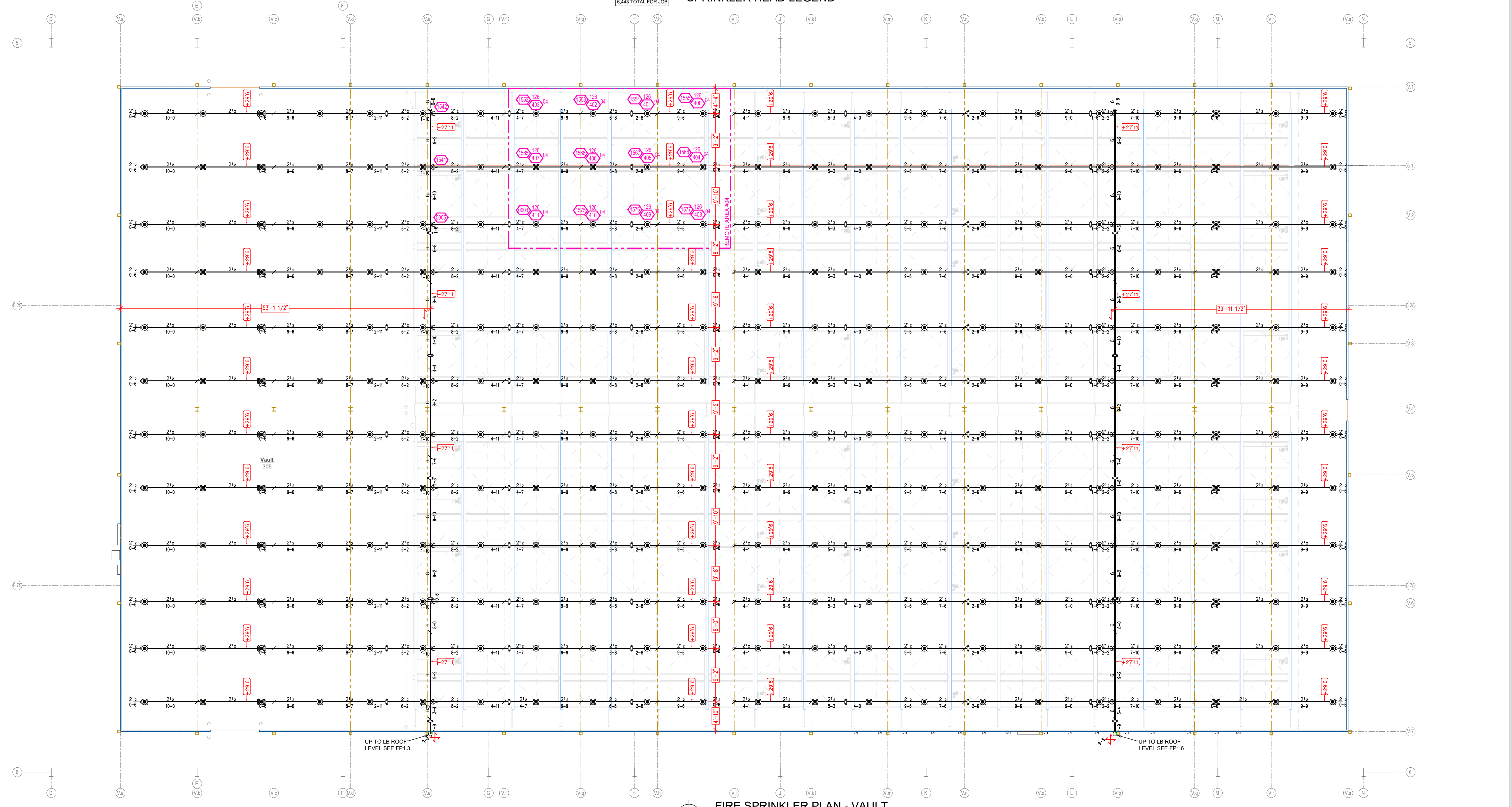
Flowing Outlets: 12
 Density: 1 Remote Area: 1045
 Req'd @ BOR
 Flow: 1537 gpm @ 125.3psi
 Calculation Safety: 10.9psi
 Includes 250 gpm Hose allowance

NOTE:
 12 SPRINKLERS CALCULATED PER
 WITH AN END HEAD PRESSURE OF
 25 PSI PER OWNER ELECTED
 DISCHARGE CRITERIA



SYM	CNT	POSITION	FINISH	TEMP	K	NPT	SIN	MFG.	MODEL#	ESCUTCHEON	HEAD BOX (2 min)
264	PENDENT	BRASS	205	25.20	1"	VK510	VIKING	VK-EFR	EXTENDED		3
264 TOTAL FOR PAGE											
6,443 TOTAL FOR JOB											

SPRINKLER HEAD LEGEND



FIRE SPRINKLER PLAN - VAULT

NORTH

SCALE 1/8"=1'-0"



REVIS	NO.	DATE	DESCR
	1	7/2/22	

DRAWING TITLE
 FIRE SPRINKLER
 PLAN -
 VAULT

DRAWN BY
 JASON
 BOSMA

SCALE
 1/8" = 1'-0"

DATE
 05/04/2021

JOB NUMBER
 11783

NEW DISTRIBUTION CENTER
 JACKSON TWO
 CROCKETT COUNTY, TENNESSEE

SHEET NUMBER
 FP1.14

910 N. SYCAMORE AVENUE, SIOUX FALLS, SD 57110 PHONE: (605) 444-9290

NO.	DATE	REVISIONS	DESCRIPTION
1	05/04/2021		
2	05/04/2021		

DRAWING TITLE
**PUMP HOUSE
SPRINKLER
PLAN**

DRAWN BY
**JASON
BOSMA**

SCALE
1/2" = 1'-0"

DATE
05/04/2021

JOB NUMBER
11783

**NEW DISTRIBUTION CENTER
JACKSON TWO
CROCKETT COUNTY, TENNESSEE**

SHEET NUMBER
FP1.15

