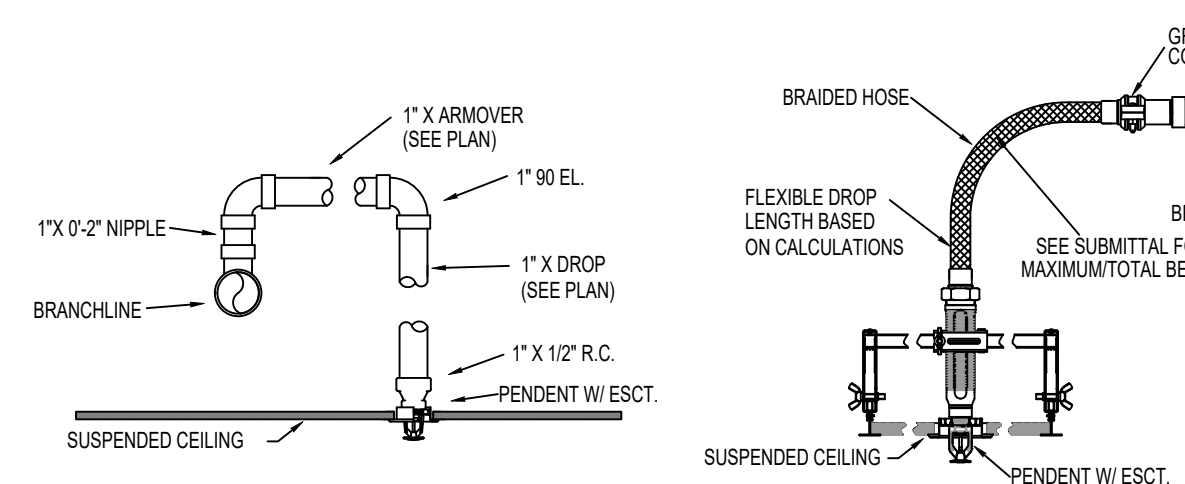


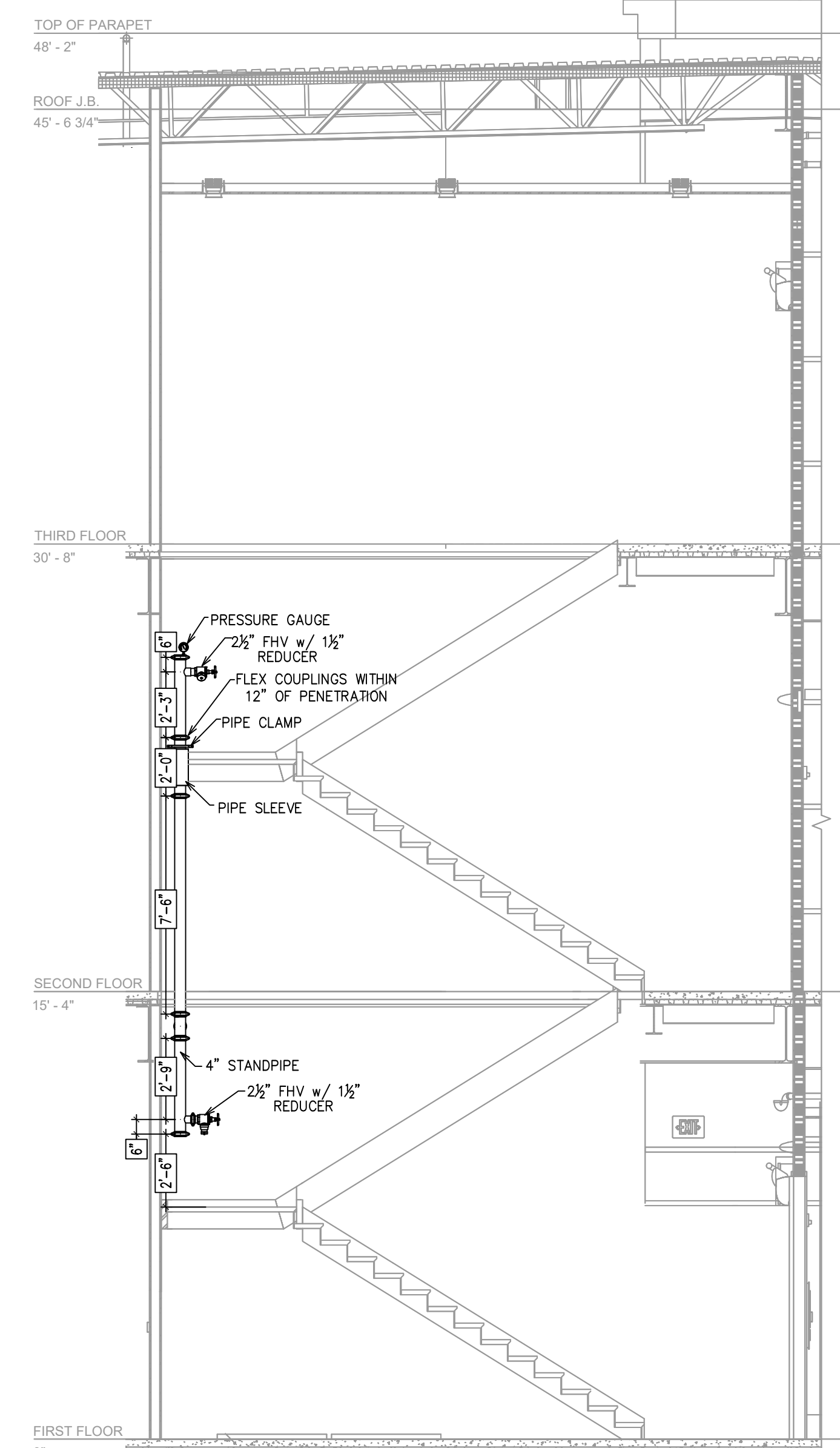
**A BUILDING SECTION**  
SCALE 1/8"=1'-0"

SYM	QNT	POSITION	FINISH	TEMP	TK	INPT	SR#	MFG	MODEL#	ESCU/TECHN	HEAD BOX (2 min)
533	SPRIG	BRASS	156	5.60	12"	VK3001	VIKING	MICROFA	N/A	2	
20	UPRIGHT	BRASS	156	5.60	12"	VK3001	VIKING	MICROFA	N/A	2	
8	PENDENT	WHITE	156	5.60	12"	RA5094	RELIABL	LT56C	CONCEALED	2	
97	PENDENT	WHITE	156	5.60	12"	VK462	VIKING	MRRAGE	CONCEALED	2	
9	UPRIGHT	BRASS	200	5.60	12"	VK3001	VIKING	MICROFA	N/A	2	
12	SIDEWALL	BRASS	200	5.60	12"	VK307	VIKING	MICROFA	N/A	2	
69	PENDENT	BRASS	156	5.60	12"	VK3021	VIKING	MICROFA	N/A	2	
738 TOTAL FOR JOB											

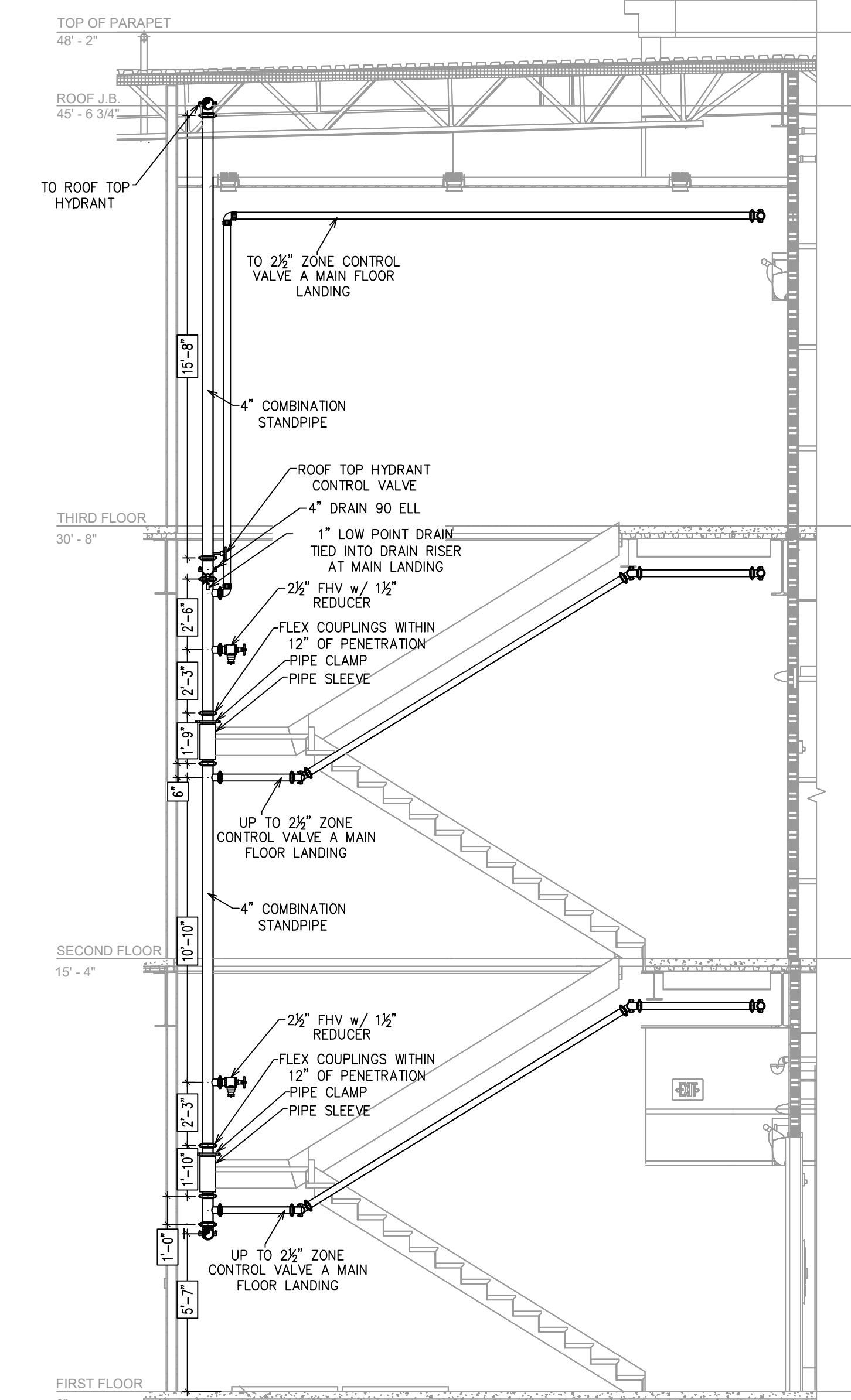
**SPRINKLER HEAD LEGEND**



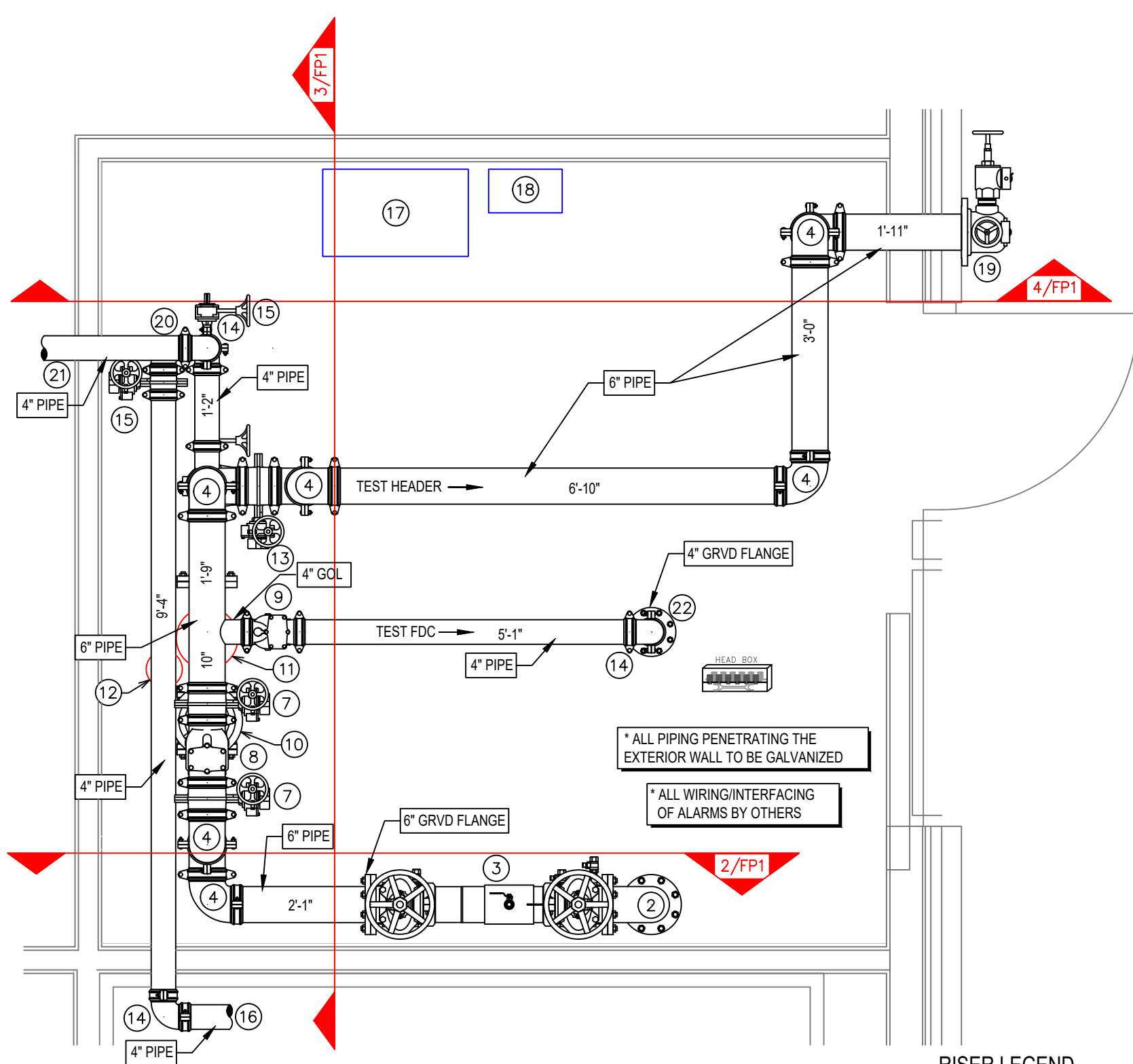
**TYP. RETURN BEND ASSEMBLY**  
**FLEXIBLE SPRINKLER DROP ASSEMBLY**  
\*BRAND - VICTULIC 48" ANG. CO. w/ ABZ BRACKET



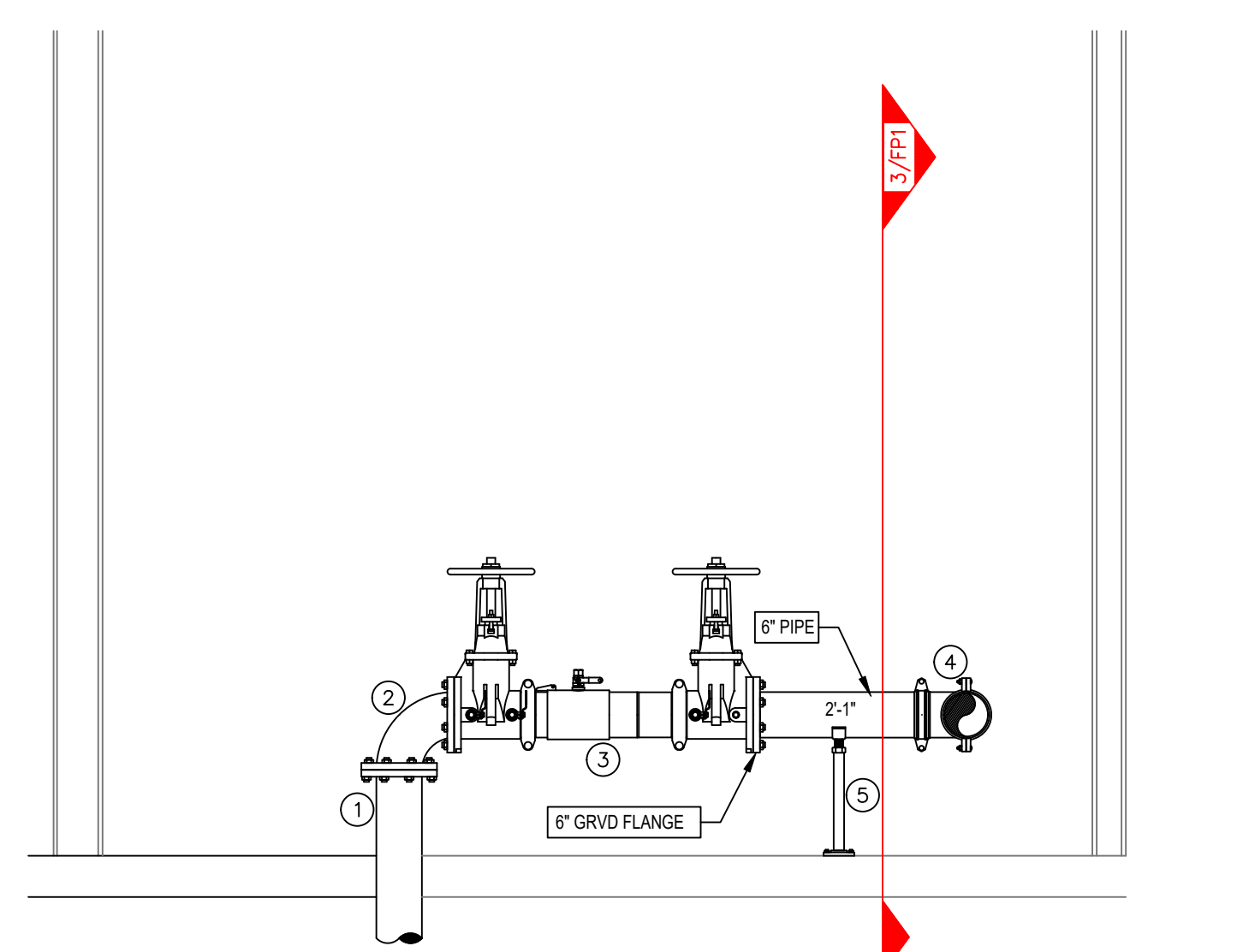
**B STAIR 1 SECTION**  
SCALE 1/4"=1'-0"



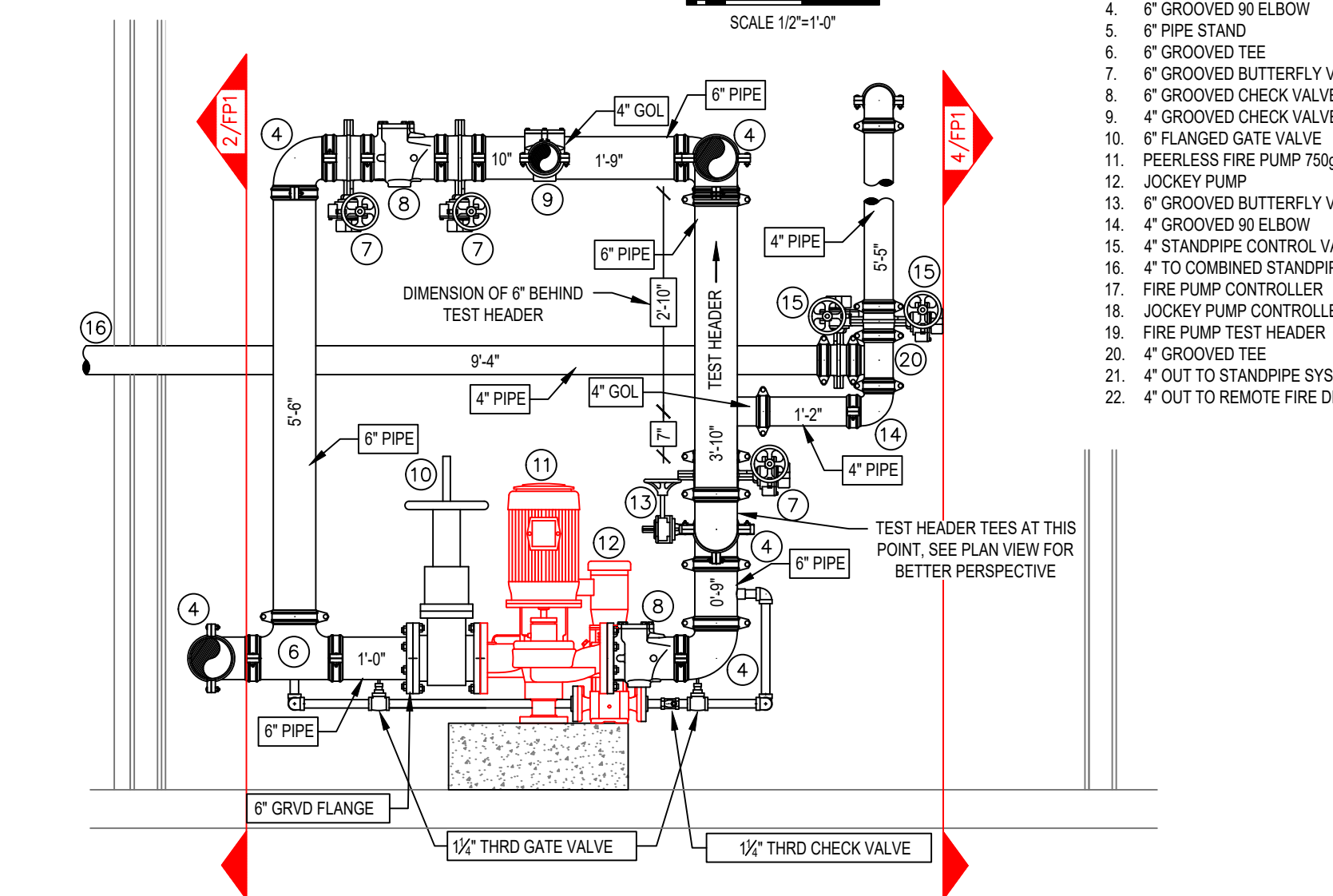
**C STAIR 2 SECTION**  
SCALE 1/4"=1'-0"



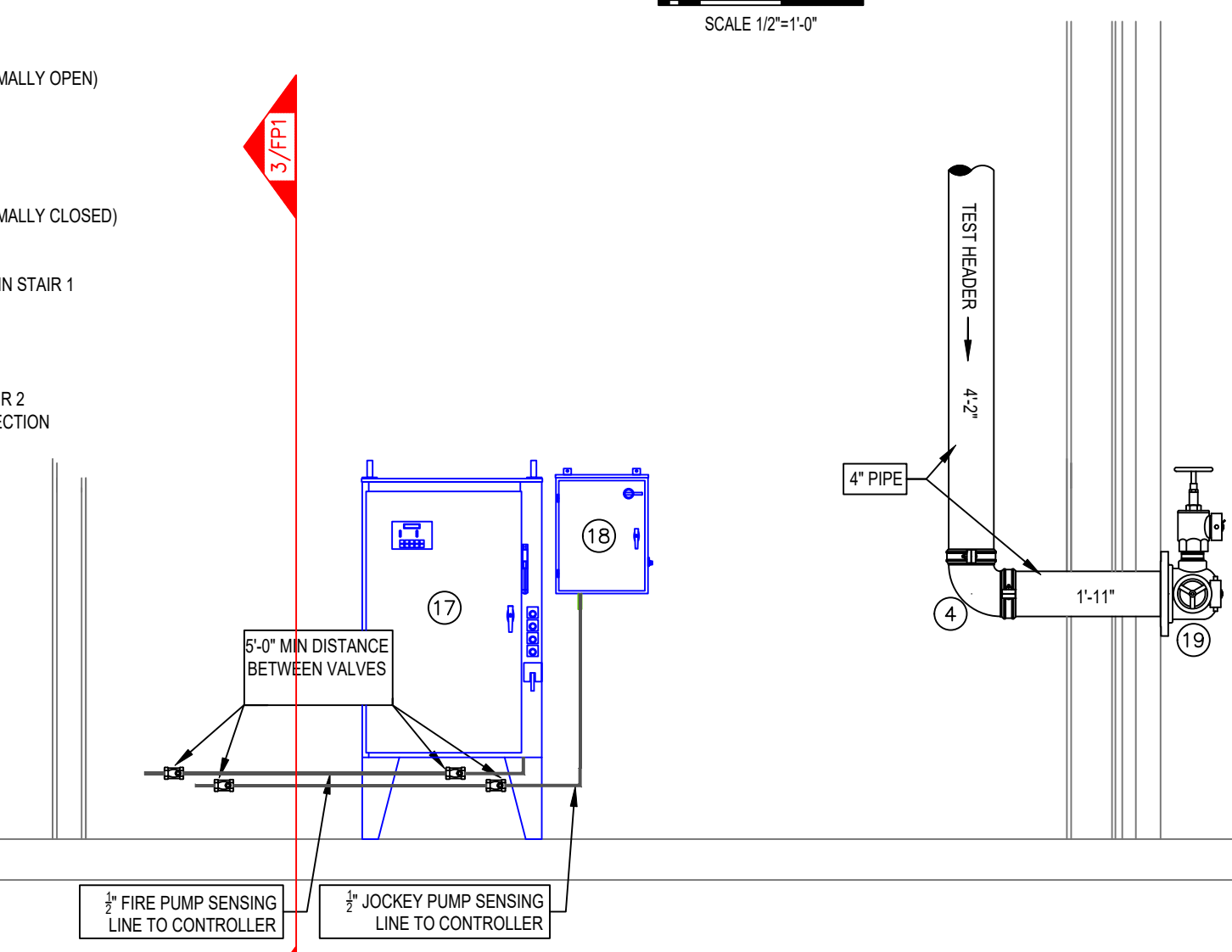
**1 FIRE PUMP PLAN VIEW**  
SCALE 1/2"=1'-0"



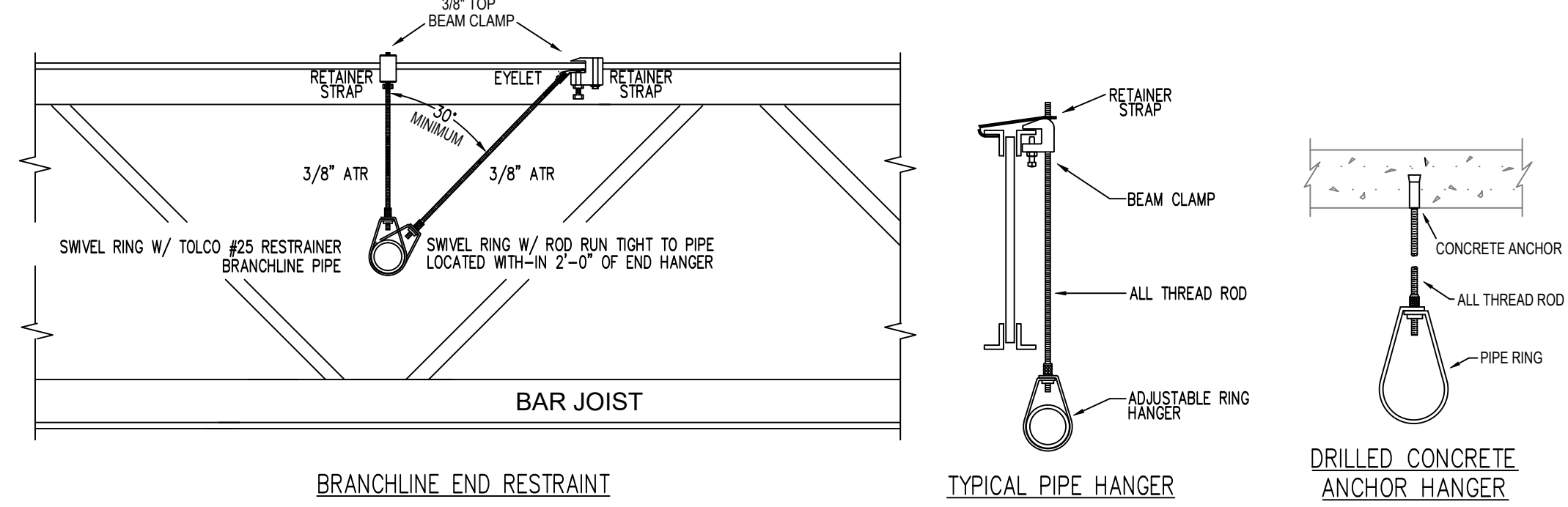
**2 FIRE PUMP DETAIL**  
SCALE 1/2"=1'-0"



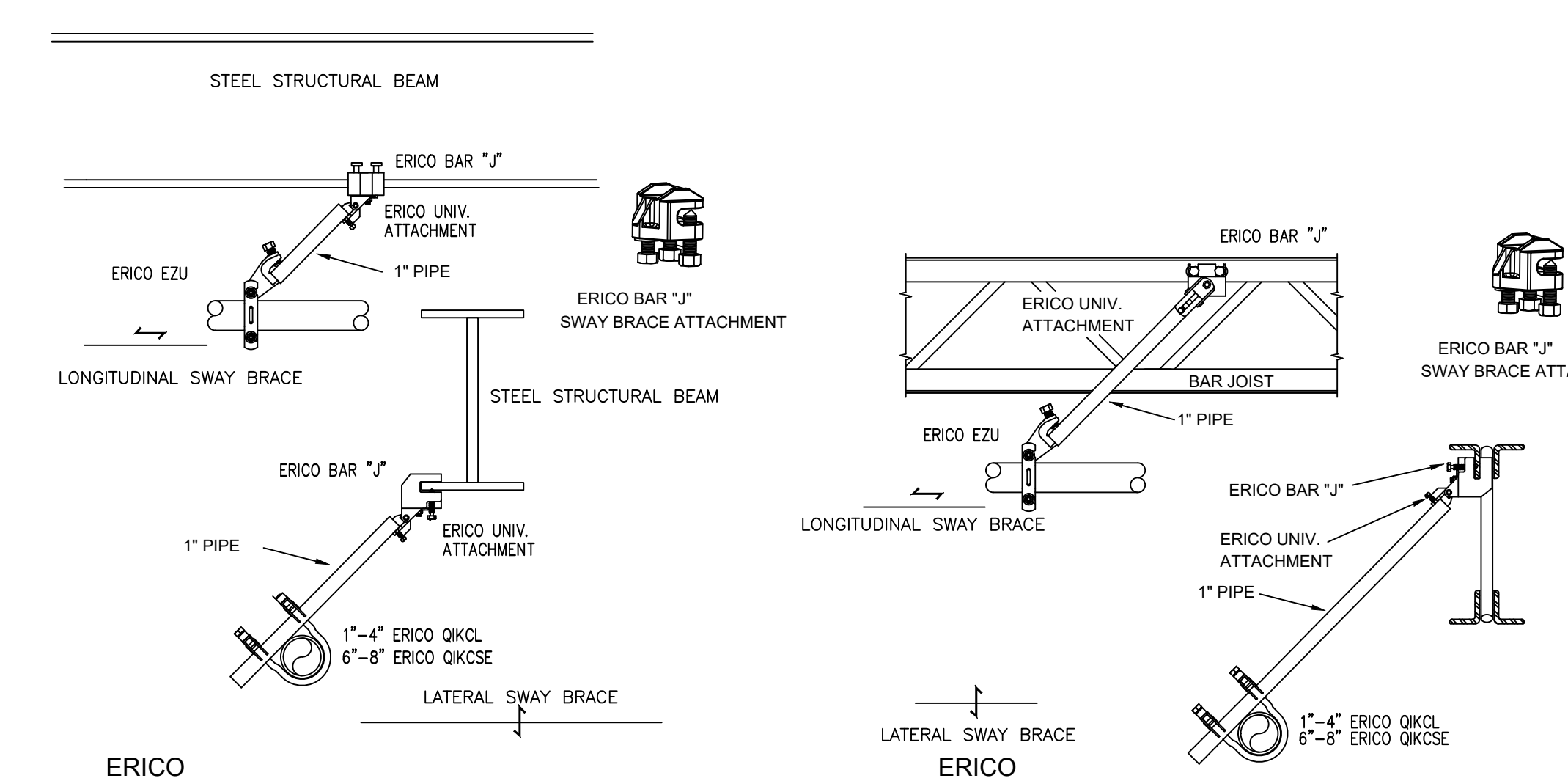
**3 FIRE PUMP DETAIL**  
SCALE 1/2"=1'-0"



**4 FIRE PUMP DETAIL**  
SCALE 1/2"=1'-0"

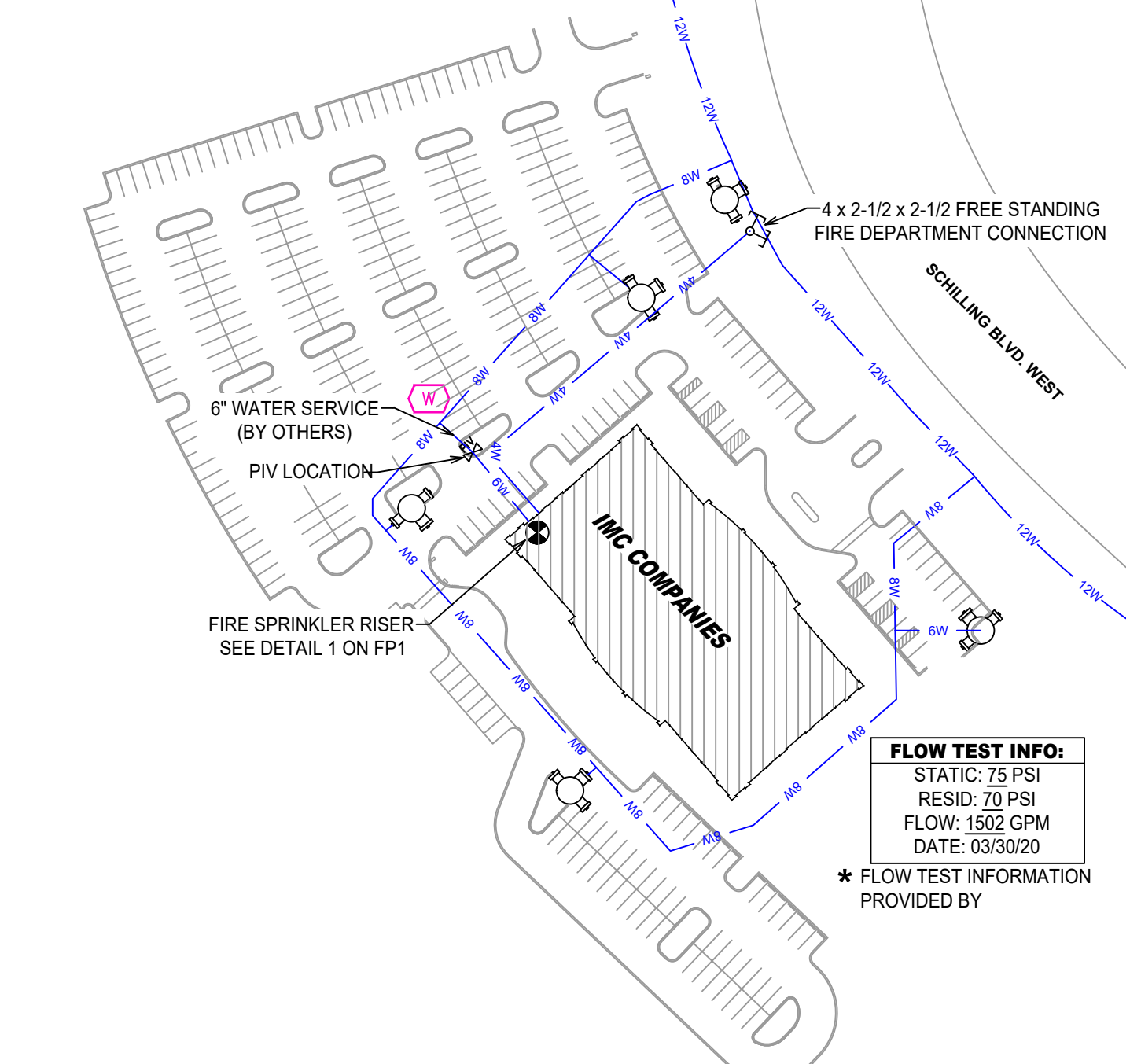


**SEISMIC NOTES:**  
 ↳ LATERAL SWAY BRACE  
 ↳ LONGITUDINAL SWAY BRACE  
 ↳ BRANCH LINE RESTRAINT - SEE DETAIL  
 ↳ SWAY BRACES SHALL BE INSTALLED PER NFPA 13 AND UPC CODES. SEE PLAN FOR LOCATION.  
 ↳ FOR BRACES USE 1" SCH. 40 PIPING ATTACHED TO BUILDING STRUCTURE AT 30 MIN ANGLE FROM VERTICAL.  
 ↳ END OF LINE RESTRAINTS SHALL BE INSTALLED NO MORE THAN 53" O.C. FOR 2" BL, 49" O.C. FOR 1 1/2" BL, 46" O.C. FOR 1 1/4" BL, AND 43" O.C. FOR 1" BL (AS SHOWN).  
 ↳ END OF LINE RESTRAINT SHALL BE INSTALLED AT END OF ALL LINES.  
 ↳ WHERE BL IS SUPPORTED BY RODS LESS THAN 6" LONG MEASURED BETWEEN THE TOP OF THE PIPE AND THE POINT OF ATTACHMENT TO THE BUILDING STRUCTURE, ADDITIONAL RESTRAINT IS NOT REQUIRED.  
 ↳ INSTALL SURGE CLIPS AT ALL RESTRAINT LOCATIONS OR RUN ROD DOWN TO TOUCH PIPE.  
 ↳ REFER TO SEISMIC BRACE CALCULATIONS FOR BRACING DETAILS AND MATERIALS.  
 ↳ INSTALL BEAM CLAMP RETAINING STRAPS AT ALL HANGERS UTILIZING TOP BEAM CLAMPS.  
 ↳ FLEXIBLE COUPLINGS SHALL BE INSTALLED AT TOP OF ALL VALVE RISERS.



**ERICO I-BEAM SWAY BRACE ATTACHMENT**  
**ERICO BAR JOIST SWAY BRACE ATTACHMENT**

- GENERAL NOTES**
- INTERNATIONAL BUILDING CODE (2012)
    - OCCUPANCY BUSINESS (B) TYPE II-B
    - SPRINKLERED AREAS (APPROXIMATE - SEE ARCHITECTURAL PLANS FOR ACTUAL)
      - 1ST FLOOR = 20,040 S.F.
      - 2ND FLOOR = 25,017 S.F.
      - 3RD FLOOR = 26,040 S.F.
  - INSTALLATION STANDARDS: SPRINKLER SYSTEM DESIGNED AND INSTALLED PER NFPA-13, NFPA-14, NFPA-20 (2010)
  - SPRINKLER PIPE TYPES:
    - 1" THROUGH 2" BRANCH LINES TO BE BLK SCHEDULE 40 PIPING WITH THREADED FITTINGS
    - 2" THROUGH 6" MAIN & BRANCH LINES TO BE BLK SCHEDULE 10 PIPING WITH GROOVED FITTINGS
  - DESIGN CRITERIA
    - FUTURE FIRE AREAS, CORRIDORS, AND RESTROOMS DESIGNED TO LIGHT HAZARD
    - MECHANICAL AND ELECTRICAL ROOMS DESIGNED TO ORDINARY HAZARD GROUP 1
    - REMOTE AREA REDUCTIONS HAVE BEEN TAKEN WHERE APPLICABLE PER NFPA 13 SEC. 11.2.3.2.3
  - NOTES:
    - ALL MATERIAL TO BE NEW AND MEET U.L. STANDARDS
    - HANGERS TO BE INSTALLED IN ACCORDANCE WITH NFPA 13 (2010) - SEE PLAN FOR HANGING REQUIREMENTS
  - SYMBOLS USED ON DRAWINGS:
    - 4.75' PIPE ELEVATION A.F.F.
    - 4.12' PIPE ELEVATION BELOW B.O.D
    - ORH ROOM HAZARD CLASSIFICATION (ALL ROOMS ARE CONSIDERED LIGHT HAZARD UNLESS NOTED)
    - HYDRAULIC CALCULATION JUNCTION POINT
    - 11'-0" CEILING HEIGHT
  - SCOPE OF WORK:
    - WE WILL INSTALL A NEW WET PIPE SYSTEM IN THE NEW IMC CORP HEAD QUARTERS. THE SYSTEM WE BE SUPPLIED WITH A FIRE PUMP AND WILL CONSIST OF 3 ZONES FED FROM A COMBINED STANDPIPE IN THE STAIRWELL. THE STANDPIPES WILL BE CLASS 3 AUTOMATIC STANDPIPES. THE CONTROL VALVES WILL BE LOCATED AT THE MAIN FLOOR LANDINGS AS SHOWN ON PLANS.
    - ALL AREAS OF THE BUILDING TO BE INSTALLED AND COVERED IN ACCORDANCE WITH THE LOCAL AUTHORITY HAVING JURISDICTION AND PER NFPA 13 (2010)



**SITE PLAN**  
SCALE 1"=100'

DRAWING TITLE  
**FIRE SPRINKLER DETAILS PLAN**

DRAWN BY  
**JASON BOSMA**

SCALE  
**1/8" = 1'-0"**

DATE  
**03/02/2021**

JOB NUMBER  
**11798**

**IMC CORPORATE HEADQUARTERS**  
**SCHILLING BOULEVARD WEST**  
**COLLIERVILLE, TN 38139**

FLOW TEST INFO:  
STATIC: 75 PSI  
RESID: 70 PSI  
FLOW: 1502 GPM  
DATE: 03/30/20  
\* FLOW TEST INFORMATION PROVIDED BY

SHEET NUMBER  
**1 OF 4**



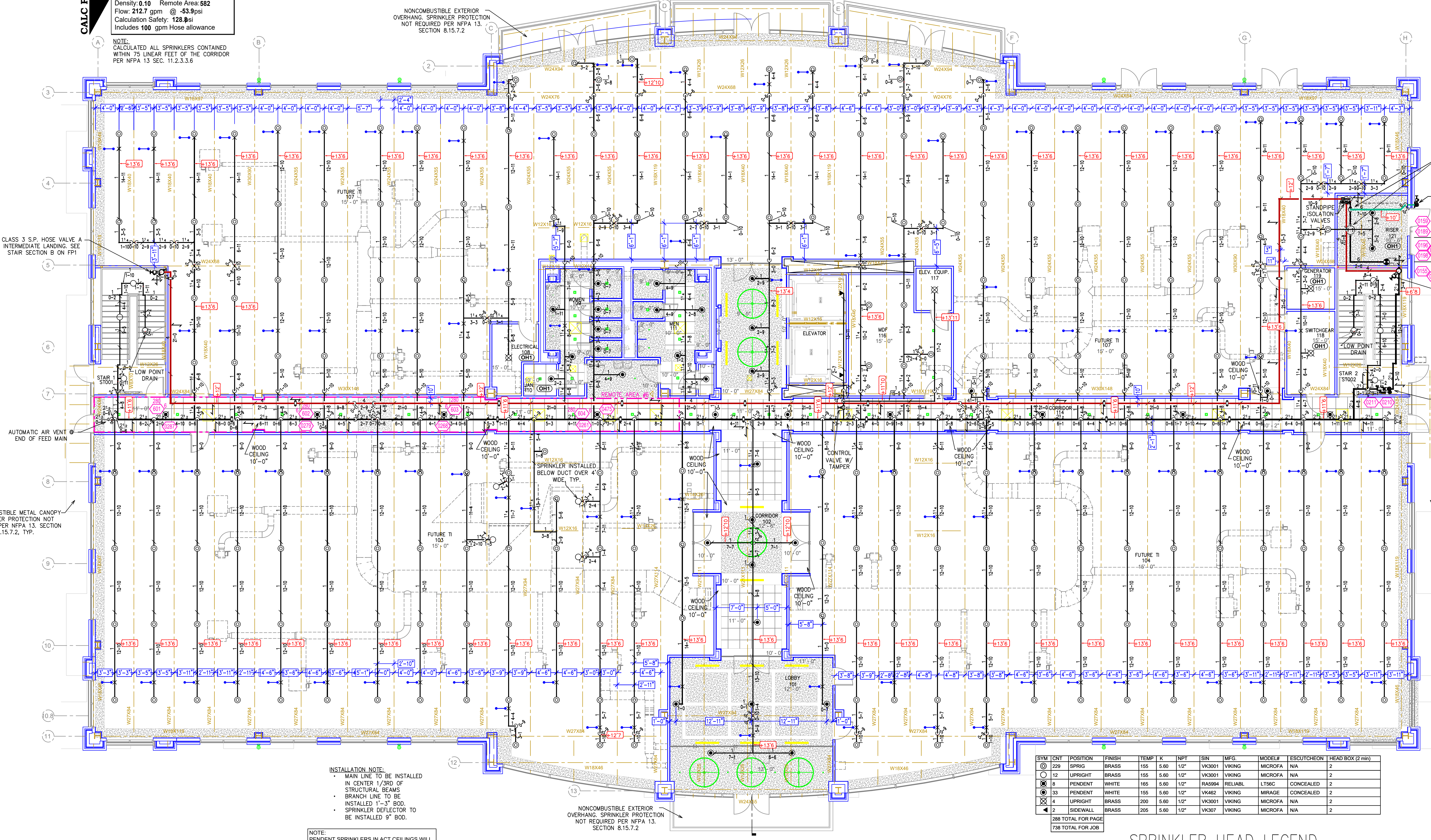


**Design Area # 6 HAZARD: LIGHT**  
 Zone: 1 System Type: WET  
 Location: 1ST FLOOR

Flowing Outlets: 4  
 Density: 0.10 Remote Area: 582  
 Flow: 212.7 gpm @ 53.9 psi  
 Calculation Safety: 128.8 psi  
 Includes 100 gpm Hose allowance

NOTE: CALCULATED ALL SPRINKLERS CONTAINED WITHIN 75 LINEAR FEET OF THE CORRIDOR PER NFPA 13 SEC. 11.2.3.3.6

NONCOMBUSTIBLE EXTERIOR OVERHANG SPRINKLER PROTECTION NOT REQUIRED PER NFPA 13, SECTION 8.15.7.2



FIRE SPRINKLER RISER/PUMP SEE DETAIL 1 ON FPI

3 WAY FIRE PUMP TEST HEADER

4" TO FREESTANDING FDC SEE SITE PLAN FOR CONTINUATION (BY OTHERS)

6" WATER SERVICE SEE SITE PLAN FOR CONTINUATION (BY OTHERS)

CLASS 3 S.P. HOSE VALVE A INTERMEDIATE LANDING SEE STAIR SECTION C ON FPI. ROTATED FOR CLARITY

2-FLOOR ZONE CONTROL ABOVE MAIN FLOOR LANDINGS. SEE DETAIL ON THIS PAGE

CLASS 3 S.P. HOSE VALVE A INTERMEDIATE LANDING SEE STAIR SECTION B ON FPI

NONCOMBUSTIBLE METAL CANOPY SPRINKLER PROTECTION NOT REQUIRED PER NFPA 13, SECTION 8.15.7.2, TYP.

NONCOMBUSTIBLE METAL CANOPY SPRINKLER PROTECTION NOT REQUIRED PER NFPA 13, SECTION 8.15.7.2, TYP.

INSTALLATION NOTE:  
 MAIN LINE TO BE INSTALLED IN CENTER 1/3RD OF STRUCTURAL BEAMS  
 BRANCH LINE TO BE INSTALLED 1"-3" BOO  
 SPRINKLER DEFLECTOR TO BE INSTALLED 9" BOO.

NOTE:  
 PENDENT SPRINKLERS IN ACT CEILINGS WILL BE INSTALLED OFF OF FLEXIBLE SPRINKLER DROPS MAX 48" LONG. SYSTEM HAS BEEN DESIGNED ACCORDING TO LENGTH

SYM	QTY	POSITION	FINISH	TEMP	K	NPY	SIN	MPG	MODEL#	ESCDYCHRON	HEAD BOX (2 min)
12		UPRIGHT	BRASS	155	5.60	1/2"	VK3001	VIKING	MICROFA	N/A	2
8		PENDENT	WHITE	155	5.60	1/2"	RA5994	RELIAB	LT56C	CONCEALED	2
33		PENDENT	WHITE	155	5.60	1/2"	VK462	VIKING	MIRAGE	CONCEALED	2
4		UPRIGHT	BRASS	200	5.60	1/2"	VK3001	VIKING	MICROFA	N/A	2
2		SIDEWALL	BRASS	200	5.60	1/2"	VK307	VIKING	MICROFA	N/A	2

286 TOTAL FOR PAGE  
738 TOTAL FOR JOB

**PIPE LEGEND**

WET SYSTEM FIRE SPRINKLER PIPING

STANDPIPE PIPING

### 1ST FLOOR FIRE PROTECTION PIPING PLAN

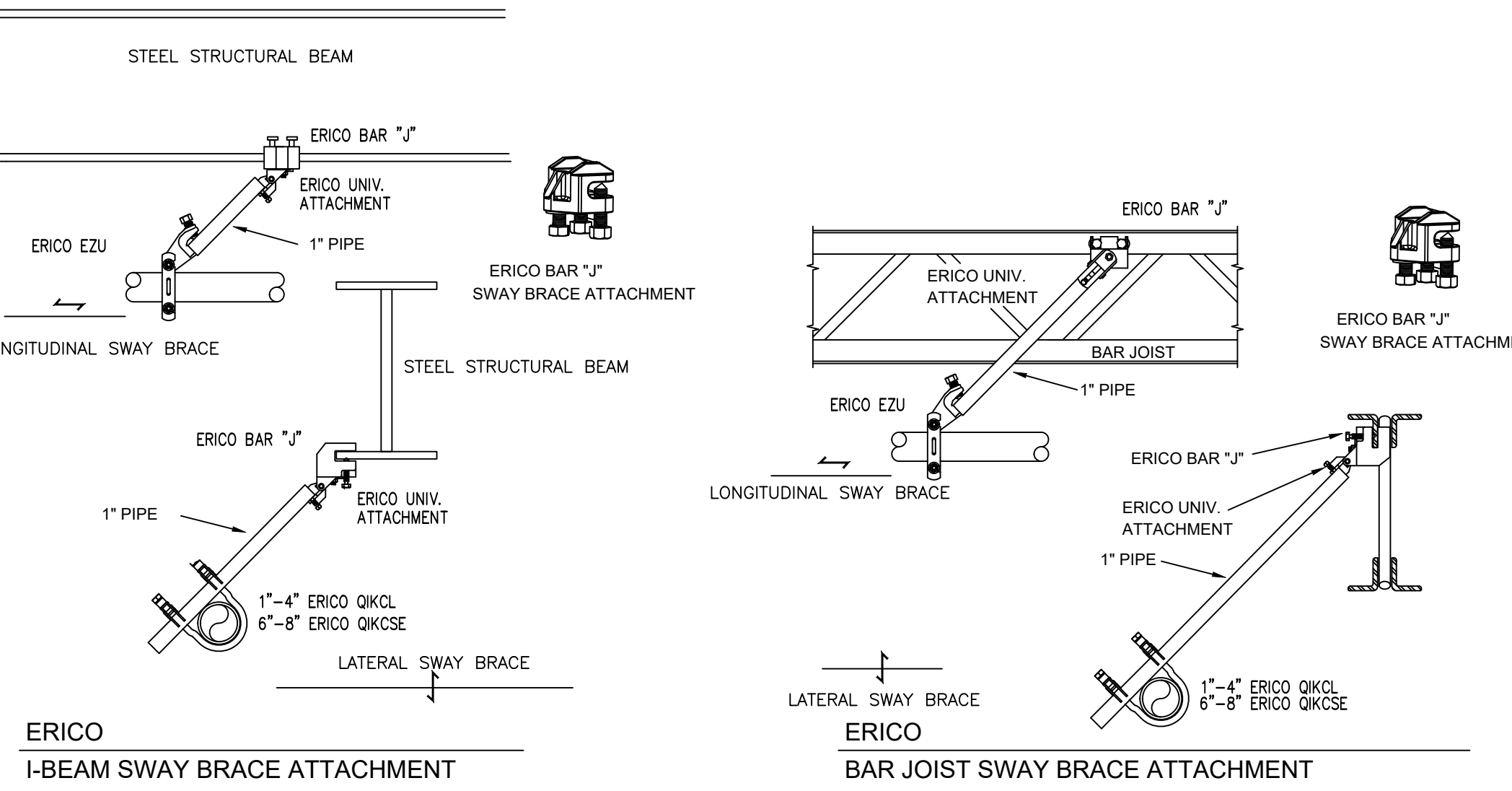
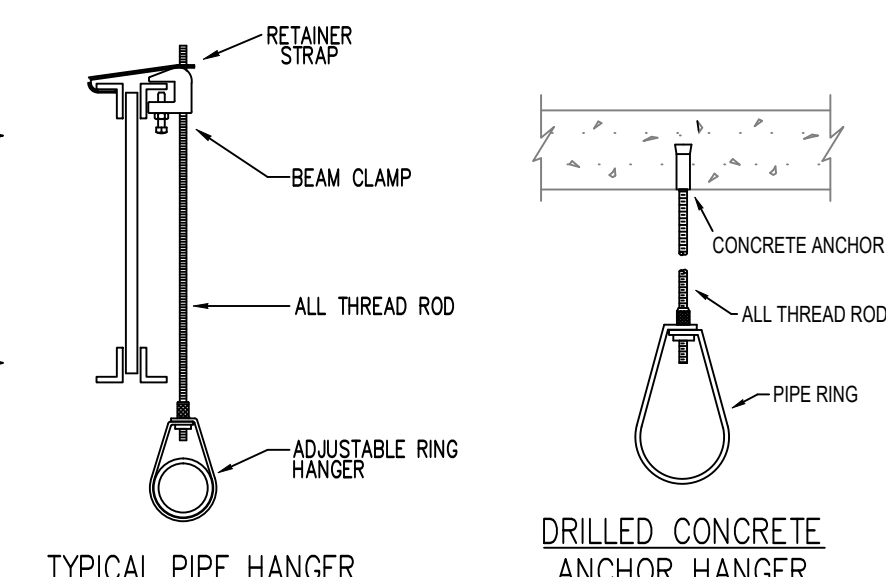
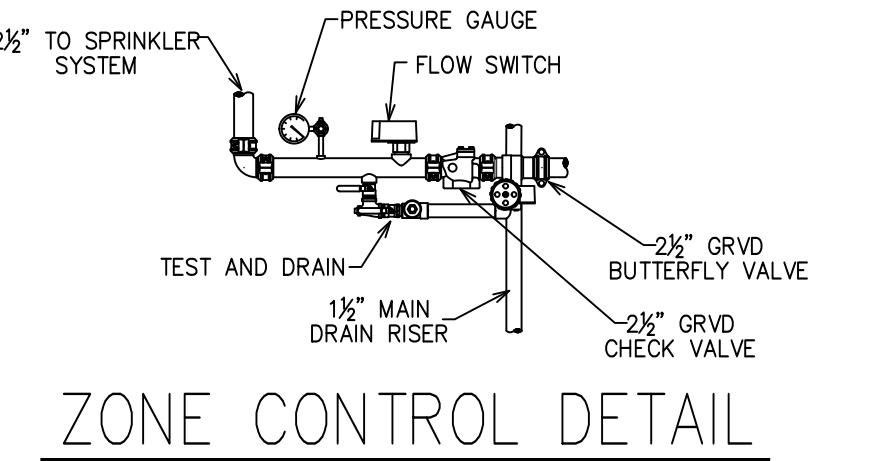
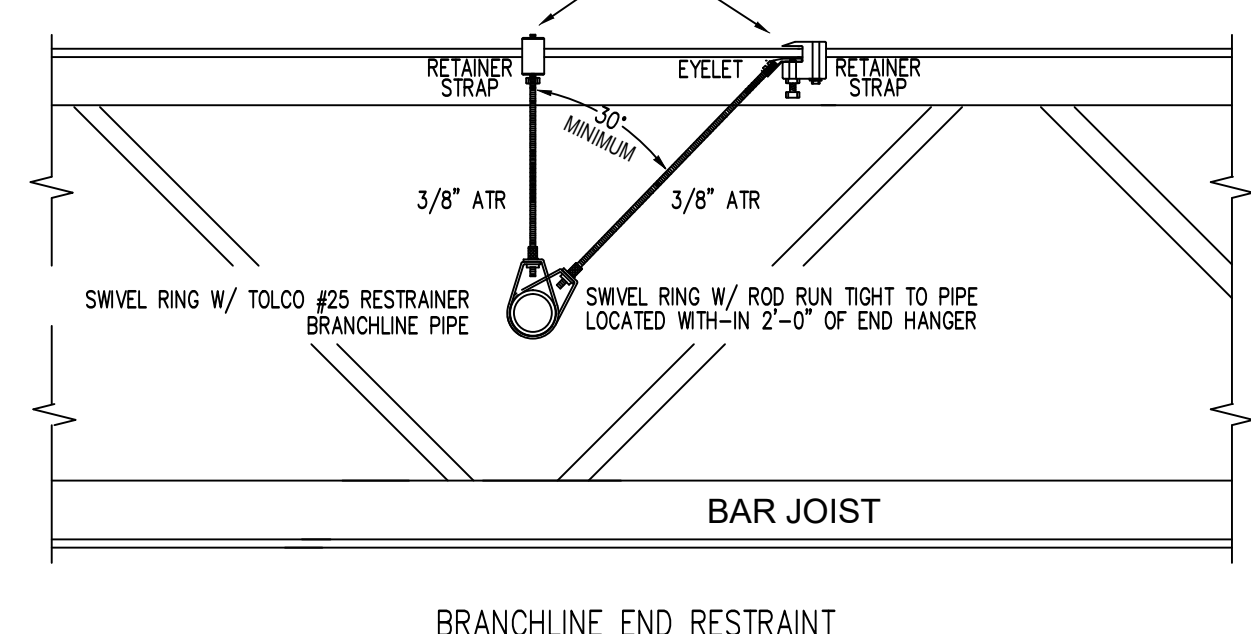
SCALE 1/8"=1'-0"

STEEL PIPE EXCEPT THREADED LIGHTWALL	MAXIMUM DISTANCE BETWEEN HANGERS (FT-IN.)							
	3/4"	1"	1 1/2"	2"	2 1/2"	3"	4"	6"
NA	12-0	12-0	15-0	15-0	15-0	15-0	15-0	15-0
THREADED LIGHTWALL STEEL PIPE	NA	12-0	12-0	12-0	12-0	NA	NA	15-0

### NFPA 13 HANGER SPACING

**SEISMIC NOTES:**

- LATERAL SWAY BRACE SEE LATERAL SWAY BRACE DETAIL
- LONGITUDINAL SWAY BRACE SEE LONGITUDINAL SWAY BRACE DETAIL
- BRANCH LINE RESTRAINT - SEE DETAIL
- SWAY BRACES SHALL BE INSTALLED PER NFPA 13 AND UFC CODES. SEE PLAN FOR LOCATION.
- FOR BRACES USE 1" SCH 40 PIPING ATTACHED TO BUILDING STRUCTURE AT 30 MIN ANGLE FROM VERTICAL. 4 WAY BRACES SHALL BE INSTALLED AT ALL VERTICAL VALVE RISERS. SEE RISER DETAIL.
- END OF LINE RESTRAINTS SHALL BE INSTALLED NOT MORE THAN 53" O.C. FOR 2" BL, 49" O.C. FOR 1 1/2" BL, 46" O.C. FOR 1" BL AND 43" O.C. FOR 3/4" BL (AS SHOWN).
- WHERE BL IS SUPPORTED BY RODS LESS THAN 6" LONG MEASURED BETWEEN THE TOP OF THE PIPE AND THE POINT OF ATTACHMENT TO THE BUILDING STRUCTURE, ADDITIONAL RESTRAINT IS NOT REQUIRED.
- INSTALL SURGE CLIPS AT ALL RESTRAINT LOCATIONS OR RUN ROD DOWN TO TOUCH PIPE.
- REFER TO SEISMIC BRACE CALCULATIONS FOR BRACING DETAILS AND MATERIALS.
- INSTALL BEAM CLAMP RETAINERS STRAPS AT ALL HANGERS UTILIZING TOP BEAM CLAMPS.
- FLEXIBLE COUPLINGS SHALL BE INSTALLED AT TOP OF ALL VALVE RISERS.



DRAWING TITLE  
**1ST FLOOR  
 FIRE  
 SPRINKLER  
 PLAN**

DRAWN BY  
**JASON  
 BOSMA**

SCALE  
**1/8" = 1'-0**

DATE  
**01/08/2021**

JOB NUMBER  
**11798**

**IMC CORPORATE HEADQUARTERS  
 SCHILLING BOULEVARD WEST  
 COLLIERVILLE, TN 38139**

SHEET NUMBER  
**2 OF 4**



100% required. Seismic assessment  
has been made on the original  
drawing, the size of which is 30" x 42"

**DRAWING TITLE**  
2ND FLOOR  
FIRE  
SPRINKLER  
PLAN

**DRAWN BY**  
JASON  
BOSMA

**SCALE**  
1/8" = 1'-0"

**DATE**  
01/08/2021

**JOB NUMBER**  
11798

**IMC CORPORATE HEADQUARTERS  
SCHILLING BOULEVARD WEST  
COLLIERVILLE, TN 38139**

**SHEET NUMBER**  
3 OF 4

**Design Area # 4 HAZARD: LIGHT**  
Zone: 2 System Type: WET  
Location: 2ND FLOOR  
Flowing Outlets: 11  
Density: 0.10 Remote Area: 1076  
Flow: 340.1 gpm @ 37.9 psi  
Calculation Safety: 36.7 psi  
Includes 100 gpm Hose allowance

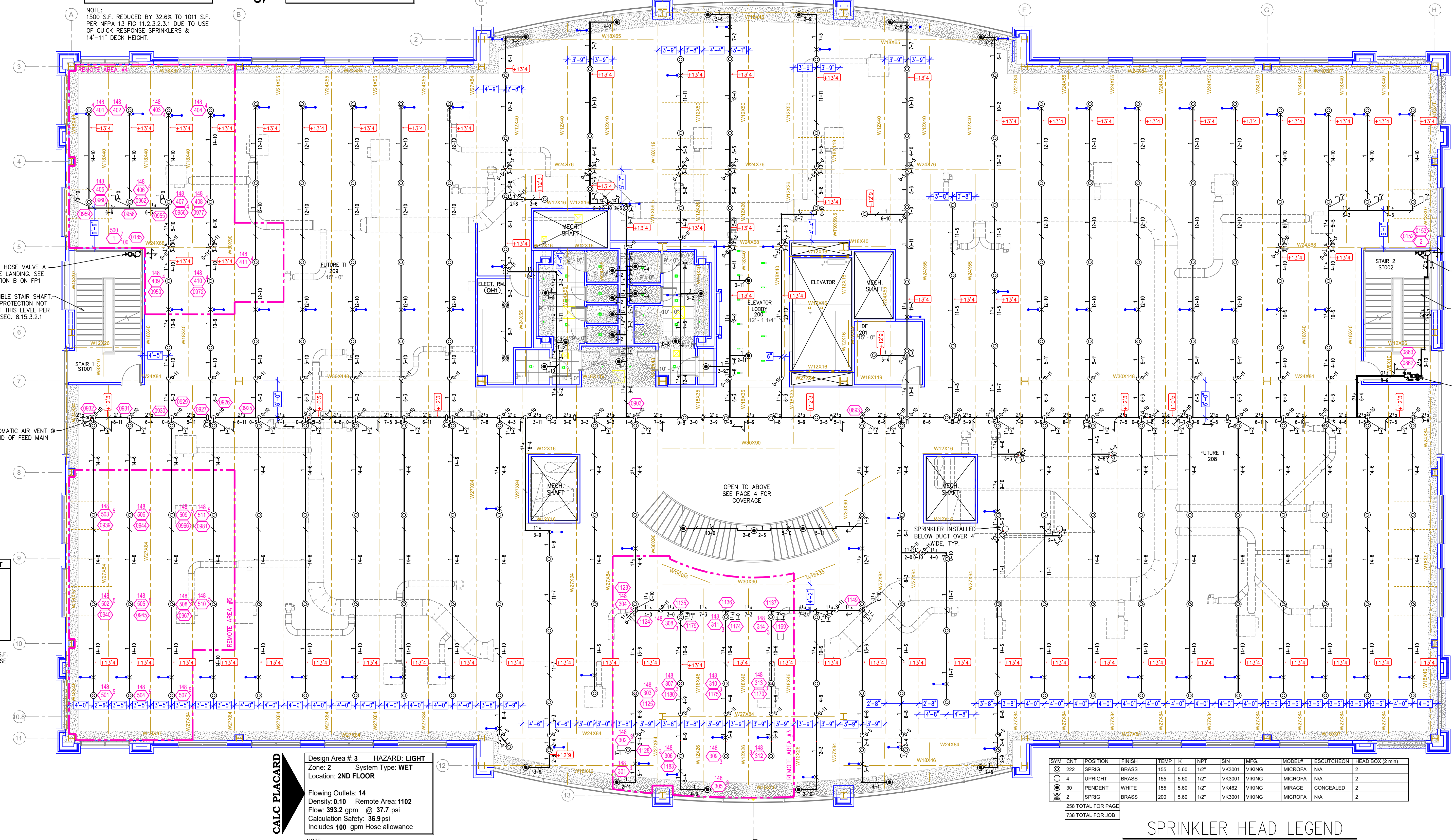
**Design Area # 7 HAZARD:**  
Zone: S.P. System Type: AUTO WET  
Location: STAIR 1&2  
Density: 0 Remote Area:  
Flow: 750 gpm @ 62.9 psi  
Calculation Safety: 10.7 psi  
Includes 0 gpm Hose allowance

**Design Area # 5 HAZARD: LIGHT**  
Zone: 2 System Type: WET  
Location: 2ND FLOOR  
Flowing Outlets: 11  
Density: 0.10 Remote Area: 1093  
Flow: 292.7 gpm @ 20.5 psi  
Calculation Safety: 95.3 psi  
Includes 100 gpm Hose allowance

**Design Area # 3 HAZARD: LIGHT**  
Zone: 2 System Type: WET  
Location: 2ND FLOOR  
Flowing Outlets: 14  
Density: 0.10 Remote Area: 1102  
Flow: 393.2 gpm @ 37.7 psi  
Calculation Safety: 36.9 psi  
Includes 100 gpm Hose allowance

**NOTE:**  
1500 S.F. REDUCED BY 32.6% TO 1011 S.F.  
PER NFPA 13 FIG 11.2.3.2.3.1 DUE TO USE  
OF QUICK RESPONSE SPRINKLERS &  
14"-11" DECK HEIGHT.

**NOTE:**  
1500 S.F. REDUCED BY 32.6% TO 1011 S.F.  
PER NFPA 13 FIG 11.2.3.2.3.1 DUE TO USE  
OF QUICK RESPONSE SPRINKLERS &  
14"-11" DECK HEIGHT.



SYM	QTY	POSITION	FINISH	TEMP	K	NPT	SIN	MPG	MODEL#	ESCU/CHRON	HEAD BOX (2 min)
222	222	SPRIG	BRASS	155	5.60	1/2"	VK3001	VIKING	MICROFA	N/A	2
4	4	UPRIGHT	BRASS	155	5.60	1/2"	VK3001	VIKING	MICROFA	N/A	2
30	30	PENDENT	WHITE	155	5.60	1/2"	VK462	VIKING	MIRAGE	CONCEALED	2
2	2	SPRIG	BRASS	200	5.60	1/2"	VK3001	VIKING	MICROFA	N/A	2

288 TOTAL FOR PAGE  
738 TOTAL FOR JOB

**SPRINKLER HEAD LEGEND**

**PIPE LEGEND**  

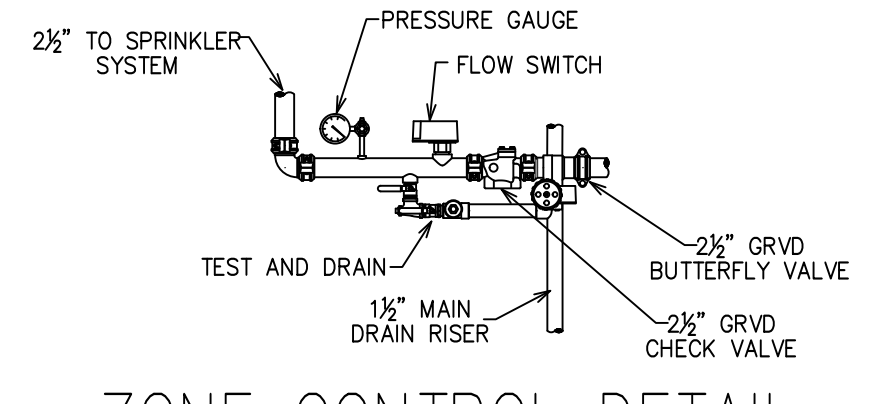
 WET SYSTEM FIRE SPRINKLER PIPING  
 STANDPIPE PIPING

**2ND FLOOR FIRE PROTECTION PIPING PLAN**

SCALE 1/8"=1'-0"

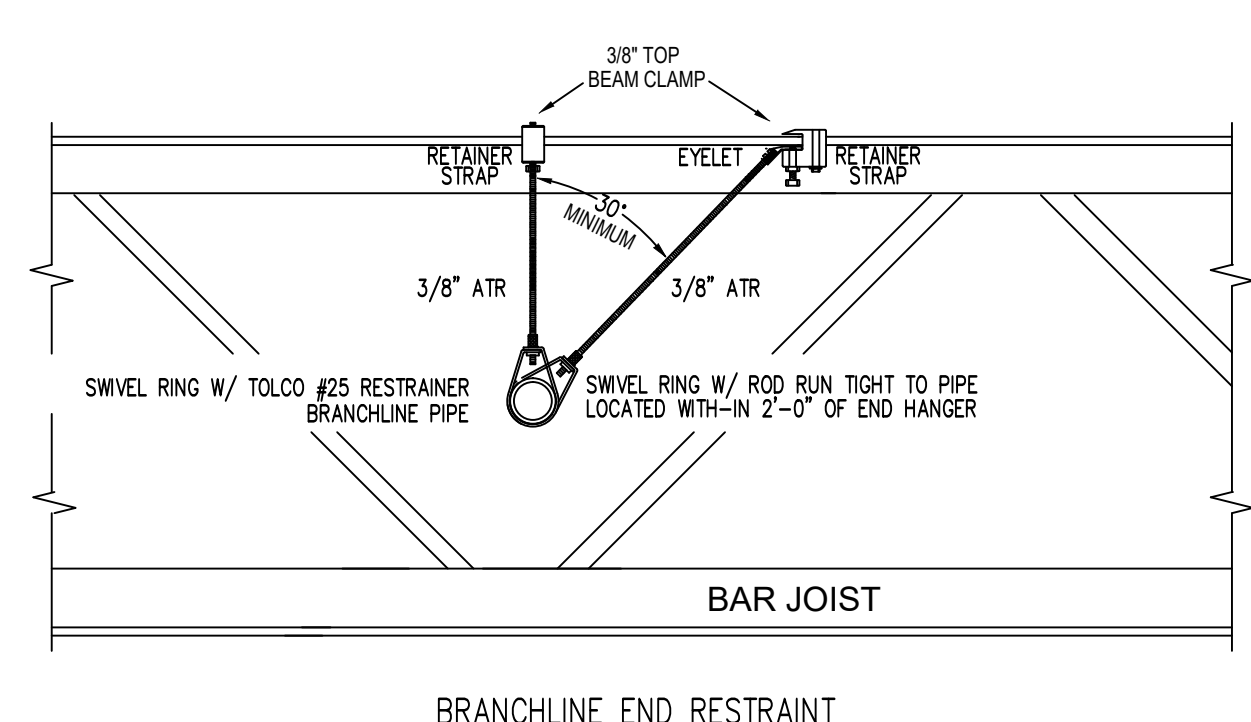
STEEL PIPE EXCEPT THREADED LIGHTWALL	MAXIMUM DISTANCE BETWEEN HANGERS (FT.-IN.)							
	3/4"	1"	1 1/2"	2"	2 1/2"	3"	4"	6"
STEEL PIPE EXCEPT THREADED LIGHTWALL	NA	12-0	12-0	15-0	15-0	15-0	15-0	15-0
THREADED LIGHTWALL STEEL PIPE	NA	12-0	12-0	12-0	12-0	NA	NA	NA

**NFPA 13 HANGER SPACING**

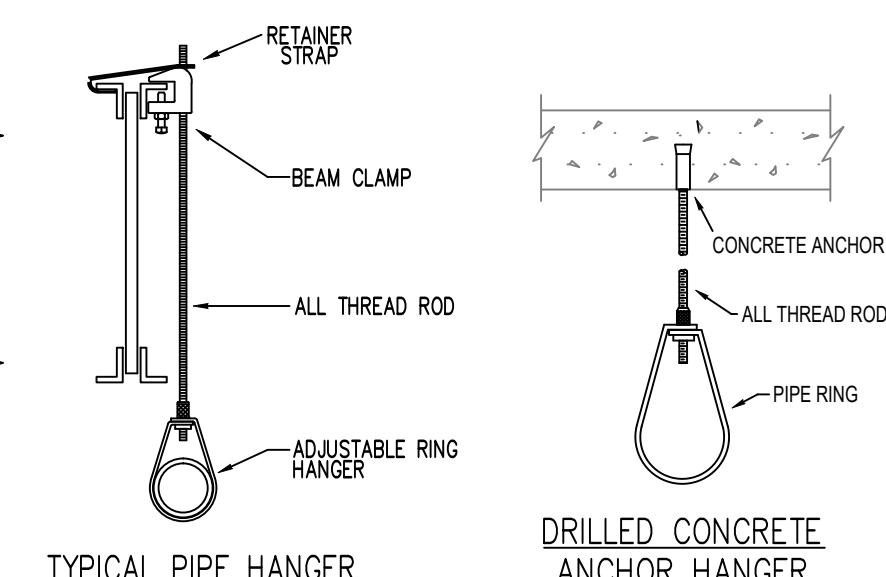


**ZONE CONTROL DETAIL**

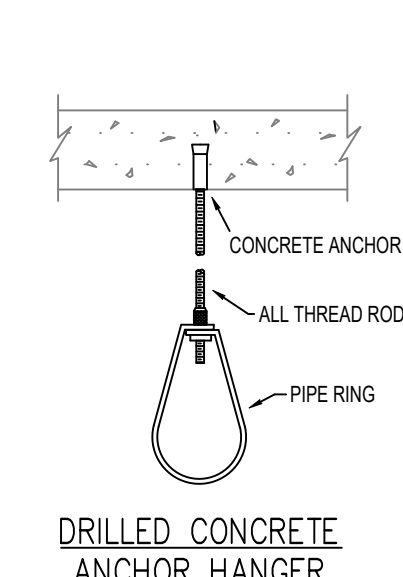
- SEISMIC NOTES:**
- LATERAL SWAY BRACE SEE LATERAL SWAY BRACE DETAIL
  - LONGITUDINAL SWAY BRACE SEE LONGITUDINAL SWAY BRACE DETAIL
  - BRANCH LINE RESTRAINT - SEE DETAIL
  - SWAY BRACES SHALL BE INSTALLED PER NFPA 13 AND UFC CODES. SEE PLAN FOR LOCATION.
  - FOR BRACES USE 1" SCH. 40 PIPING ATTACHED TO BUILDING STRUCTURE AT 30 MIN ANGLE FROM VERTICAL.
  - 4 WAY BRACES SHALL BE INSTALLED AT ALL VERTICAL VALVE RISERS. SEE RISER DETAIL.
  - END OF LINE RESTRAINTS SHALL BE INSTALLED AT END OF ALL LINES
  - WHERE BL IS SUPPORTED BY RODS LESS THAN 6" LONG MEASURED BETWEEN THE TOP OF THE PIPE AND THE POINT OF ATTACHMENT TO THE BUILDING STRUCTURE, ADDITIONAL RESTRAINT IS NOT REQUIRED.
  - INSTALL SURGE CLIPS AT ALL RESTRAINT LOCATIONS OR RUN ROD DOWN TO TOUCH PIPE.
  - REFER TO SEISMIC BRACE CALCULATIONS FOR BRACING DETAILS AND MATERIALS.
  - INSTALL BEAM CLAMP RETAINING STRAPS AT ALL HANGERS UTILIZING TOP BEAM CLAMPS.
  - FLEXIBLE COUPLINGS SHALL BE INSTALLED AT TOP OF ALL VALVE RISERS.



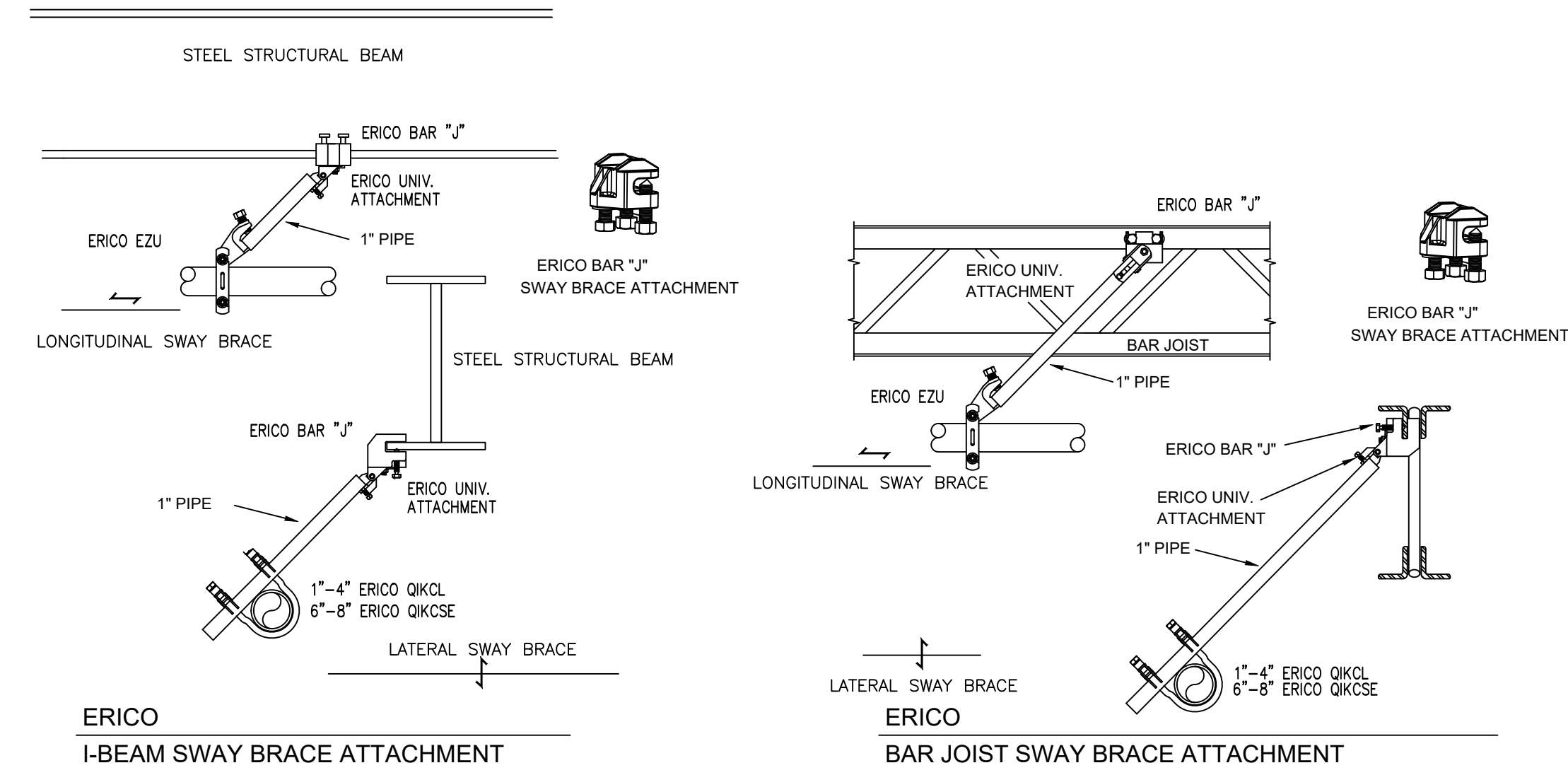
**BRANCHLINE END RESTRAINT**



**TYPICAL PIPE HANGER**



**DRILLED CONCRETE ANCHOR HANGER**



**ERICO I-BEAM SWAY BRACE ATTACHMENT**

**ERICO BAR JOIST SWAY BRACE ATTACHMENT**

**ERICO LATERAL SWAY BRACE ATTACHMENT**



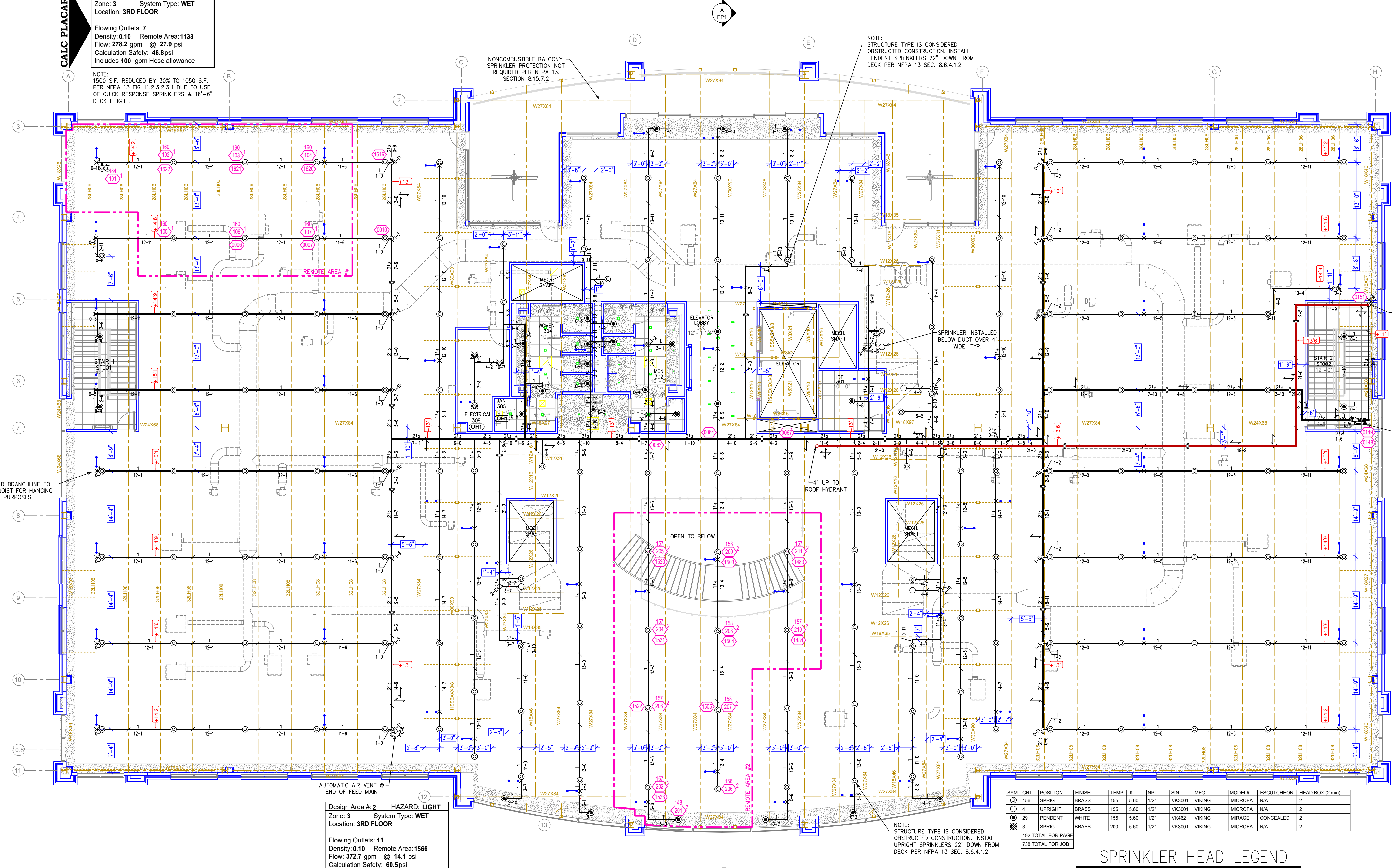
**Design Area # 1 HAZARD: LIGHT**  
 Zone: 3 System Type: WET  
 Location: 3RD FLOOR

Flowing Outlets: 7  
 Density: 0.10 Remote Area: 1133  
 Flow: 278.2 gpm @ 27.9 psi  
 Calculation Safety: 46.8 psi  
 Includes 100 gpm Hose allowance

NOTE:  
 1500 S.F. REDUCED BY 30% TO 1050 S.F.  
 PER NFPA 13 FIG 11.2.3.2.3.1 DUE TO USE  
 OF QUICK RESPONSE SPRINKLERS & 16'-6"  
 DECK HEIGHT.

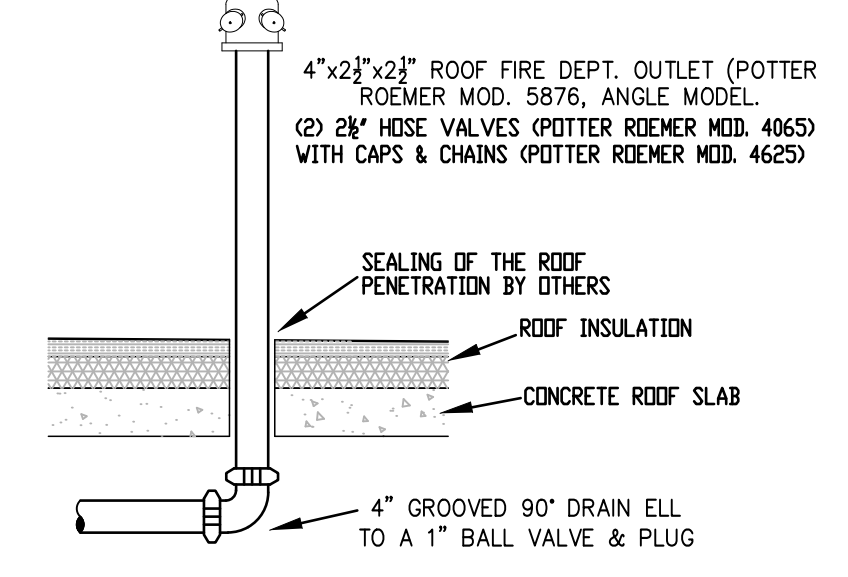
NONCOMBUSTIBLE BALCONY  
 SPRINKLER PROTECTION NOT  
 REQUIRED PER NFPA 13,  
 SECTION 8.15.7.2

NOTE:  
 STRUCTURE TYPE IS CONSIDERED  
 OBSTRUCTED CONSTRUCTION. INSTALL  
 PENDENT SPRINKLERS 22" DOWN FROM  
 DECK PER NFPA 13 SEC. 8.6.4.1.2



4" STANDPIPE UP  
 FROM 2ND FLOOR

2-FLOOR ZONE CONTROL  
 ABOVE MAIN FLOOR LANDINGS.  
 SEE DETAIL ON THIS PAGE



**ROOF MANIFOLD #1**  
 (STANDPIPE TEST CONNECTION)

**Design Area # 2 HAZARD: LIGHT**  
 Zone: 3 System Type: WET  
 Location: 3RD FLOOR

Flowing Outlets: 11  
 Density: 0.10 Remote Area: 1566  
 Flow: 372.7 gpm @ 14.1 psi  
 Calculation Safety: 60.5 psi  
 Includes 100 gpm Hose allowance

NOTE:  
 1500 S.F. NOT REDUCED DUE TO CEILING  
 HEIGHT OVER 20'

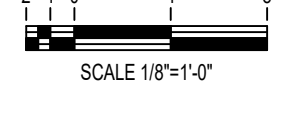
SYMBOL	QTY	POSITION	FINISH	TEMP	K	NPT	SIN	MFG	MODEL#	ESCUTCHION	HEAD BOX (2 min)
156	SPRIG	BRASS	155	5.60	1/2"	VK3001	VIKING	MICROFA	N/A	N/A	2
4	UPRIGHT	BRASS	155	5.60	1/2"	VK3001	VIKING	MICROFA	N/A	N/A	2
20	PENDENT	WHITE	155	5.60	1/2"	VK462	VIKING	MIRAGE	CONCEALED	N/A	2
3	SPRIG	BRASS	200	5.60	1/2"	VK3001	VIKING	MICROFA	N/A	N/A	2

182 TOTAL FOR PAGE  
 738 TOTAL FOR JOB

**SPRINKLER HEAD LEGEND**

**PIPE LEGEND**  
 — WET SYSTEM FIRE SPRINKLER PIPING  
 — STANDPIPE PIPING

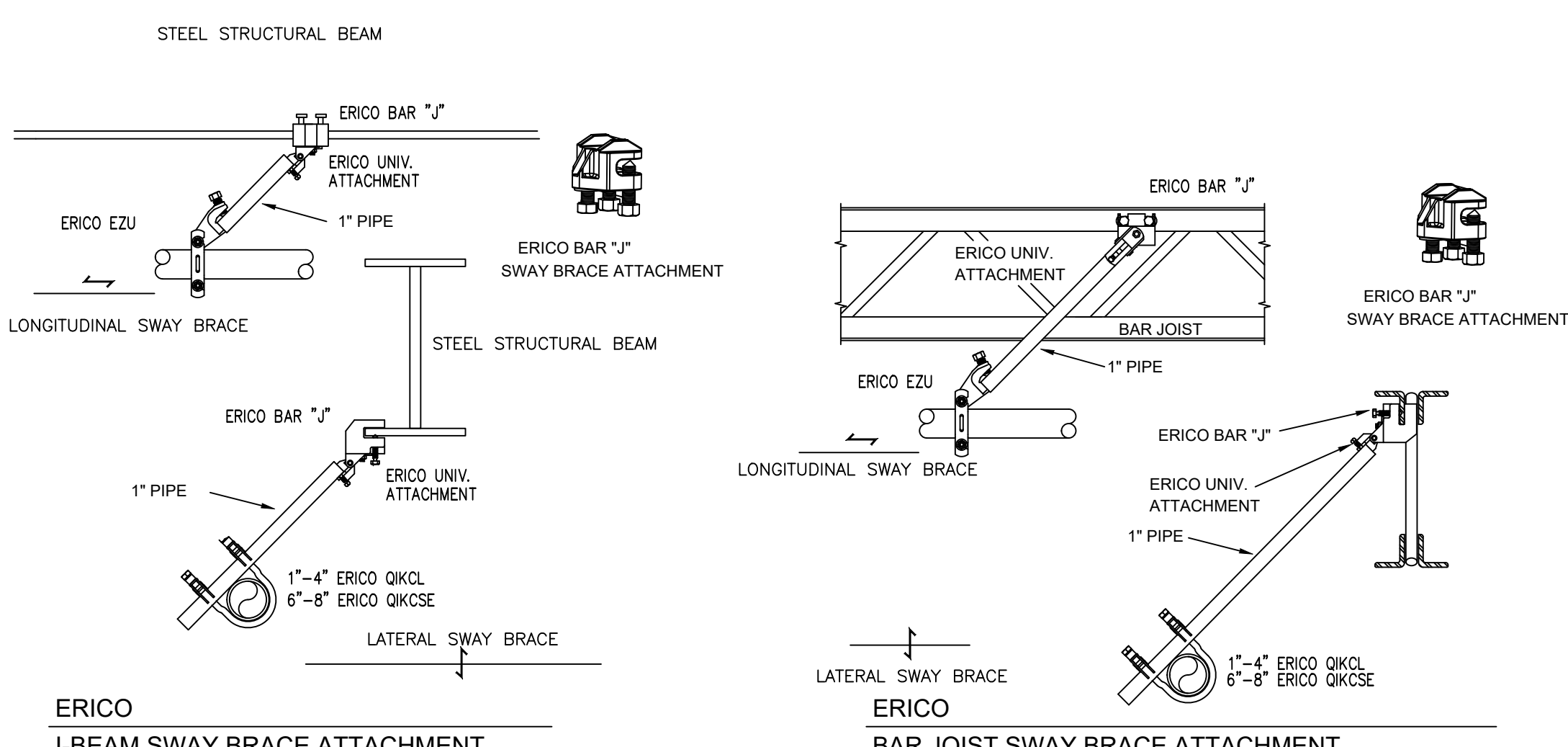
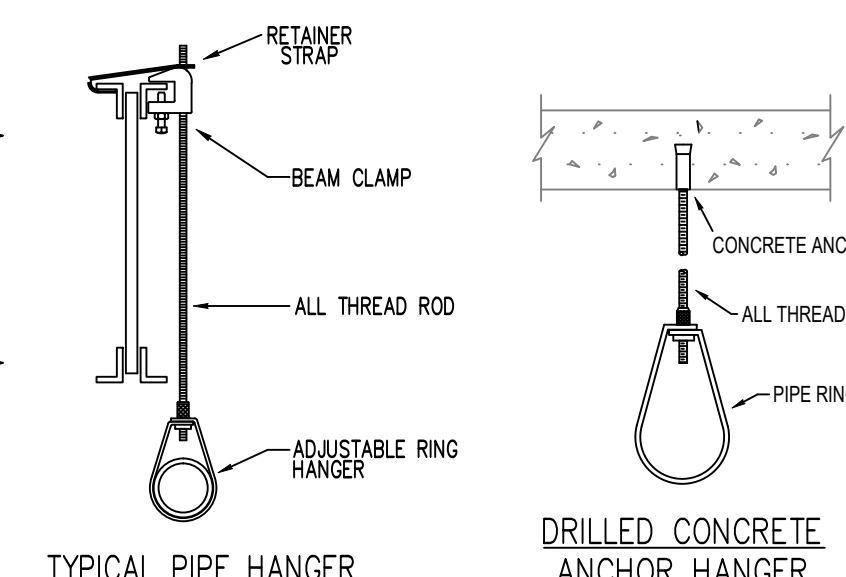
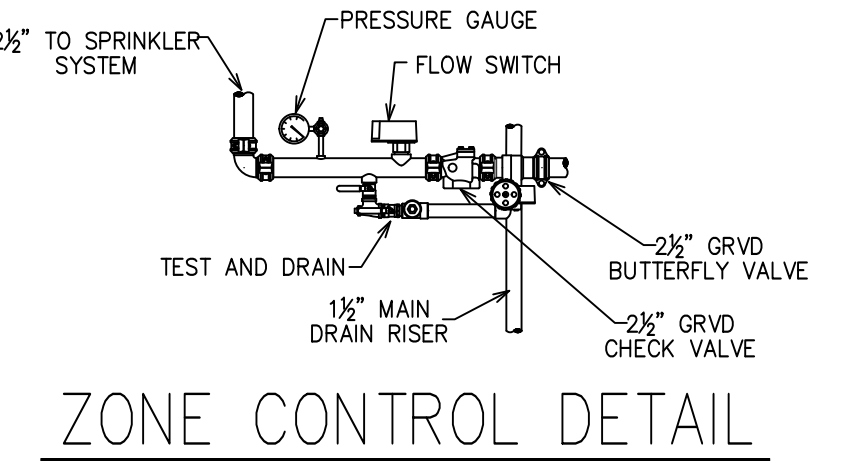
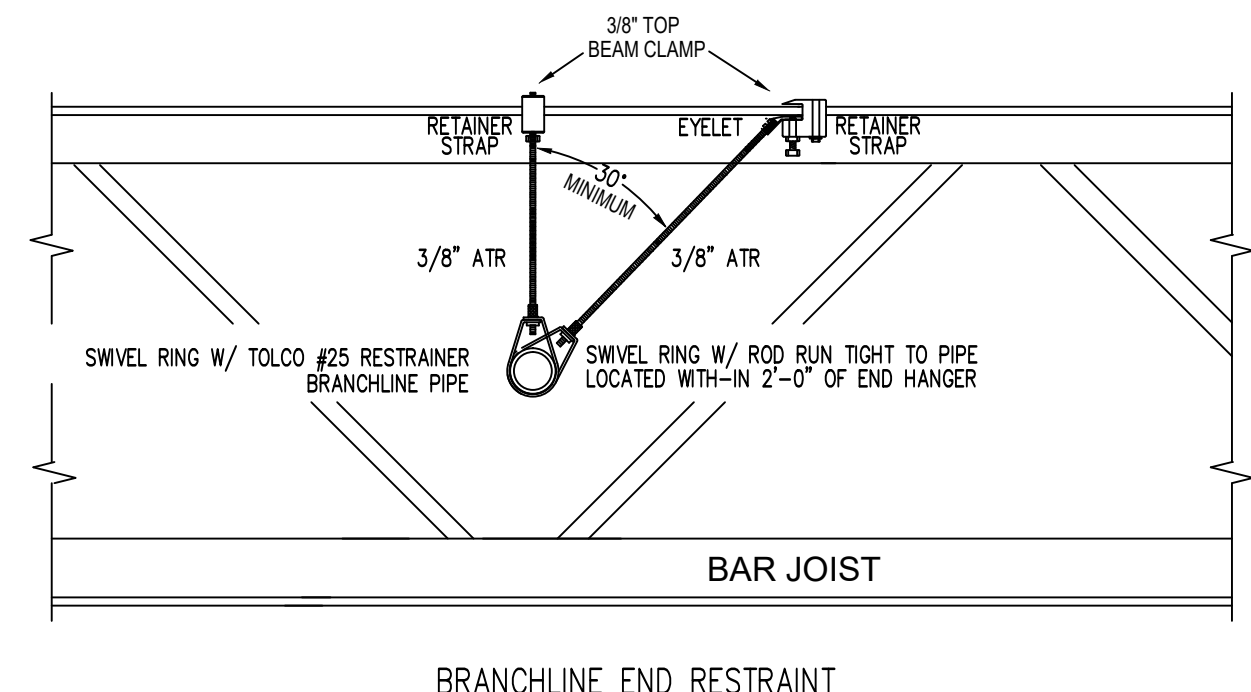
**3RD FLOOR FIRE PROTECTION PIPING PLAN**



STEEL PIPE EXCEPT THREADED LIGHTWALL	MAXIMUM DISTANCE BETWEEN HANGERS (FT.-IN.)								
	3/4"	1"	1 1/2"	2"	2 1/2"	3"	4"	6"	8"
NA	12-0	12-0	15-0	15-0	15-0	15-0	15-0	15-0	15-0
THREADED LIGHTWALL STEEL PIPE	NA	12-0	12-0	12-0	12-0	NA	NA	NA	NA

**NFPA 13 HANGER SPACING**

- SEISMIC NOTES:**
- LATERAL SWAY BRACE SEE LATERAL SWAY BRACE DETAIL
  - LONGITUDINAL SWAY BRACE SEE LONGITUDINAL SWAY BRACE DETAIL
  - BRANCH LINE RESTRAINT - SEE DETAIL
  - SWAY BRACES SHALL BE INSTALLED PER NFPA 13 AND UFC CODES. SEE PLAN FOR LOCATION.
  - FOR BRACES USE 1" SCH. 40 HANGING ATTACHED TO BUILDING STRUCTURE AT 30 MIN ANGLE FROM VERTICAL. 4 WAY BRACES SHALL BE INSTALLED AT ALL VERTICAL VALVE RISERS. SEE RISER DETAIL.
  - END OF LINE RESTRAINTS SHALL BE INSTALLED NO MORE THAN 53" O.C. FOR 2" BL. 49" O.C. FOR 1 1/2" BL. 46" O.C. FOR 1 1/4" BL. AND 43" O.C. FOR 1" BL. (AS SHOWN).
  - END OF LINE RESTRAINTS SHALL BE INSTALLED AT END OF ALL LINES.
  - WHERE BL IS SUPPORTED BY RODS LESS THAN 6" LONG MEASURED BETWEEN THE TOP OF THE PIPE AND THE POINT OF ATTACHMENT TO THE BUILDING STRUCTURE, ADDITIONAL RESTRAINT IS NOT REQUIRED.
  - INSTALL SURGE CLIPS AT ALL RESTRAINT LOCATIONS OR RUN ROD DOWN TO TOUCH PIPE.
  - REFER TO SEISMIC BRACE CALCULATIONS FOR BRACING DETAILS AND MATERIALS.
  - INSTALL BEAM CLAMP RETAINING STRAPS AT ALL HANGERS UTILIZING TOP BEAM CLAMPS.
  - FLEXIBLE COUPLINGS SHALL BE INSTALLED AT TOP OF ALL VALVE RISERS.



DRAWING TITLE  
**3RD FLOOR FIRE SPRINKLER PLAN**

DRAWN BY  
**JASON BOSMA**

SCALE  
**1/8" = 1'-0"**

DATE  
**01/08/2021**

JOB NUMBER  
**11798**

**IMC CORPORATE HEADQUARTERS  
 SCHILLING BOULEVARD WEST  
 COLLIERVILLE, TN 38139**

SHEET NUMBER  
**4 OF 4**