

NOTE: PENDENT SPRINKLERS ARE SPACED AT A MAX OF 16'x16' ON THIS LEVEL

FIRE SPRINKLER PLAN - UPPER LEVEL

SCALE: 1/8" = 1'-0"

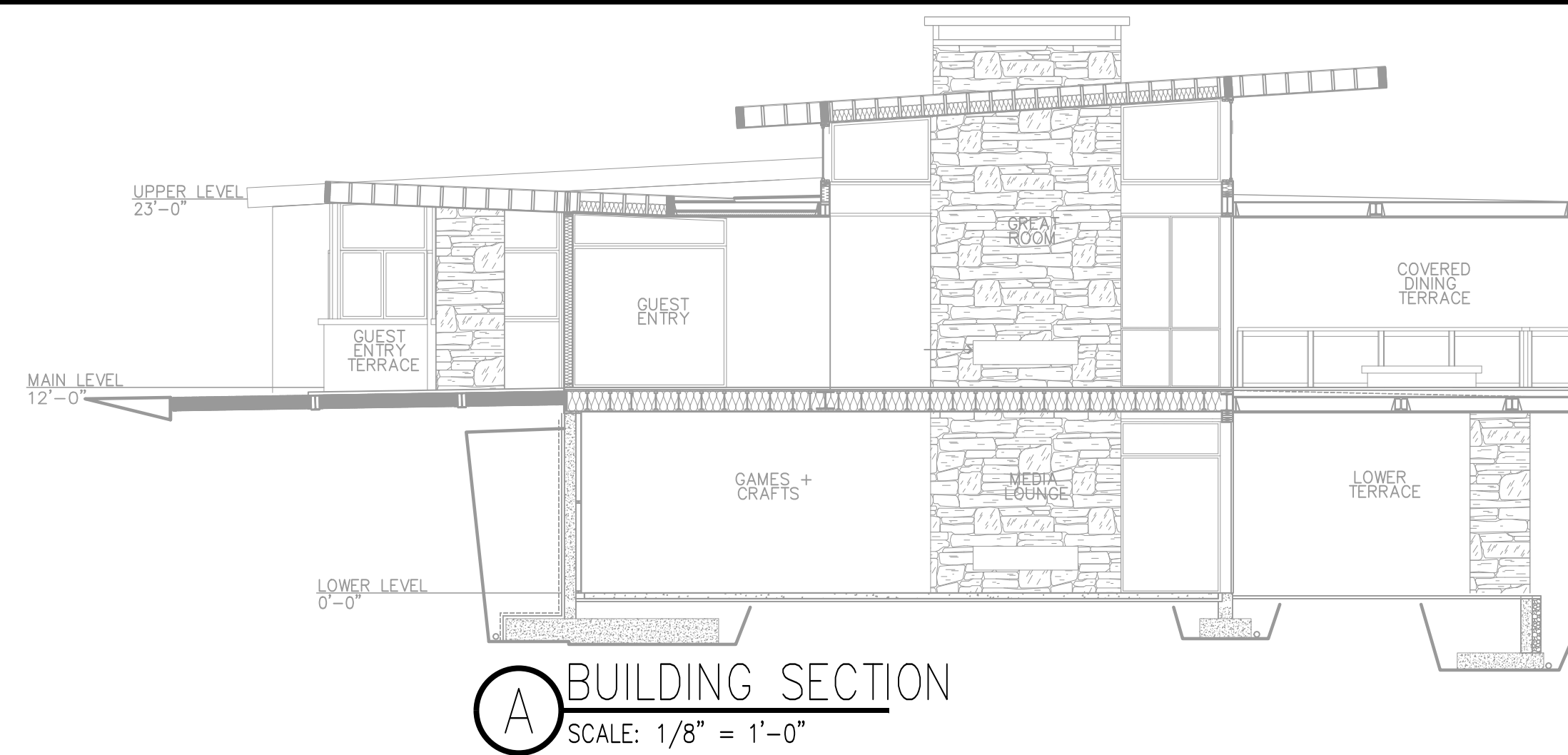
WATER SUPPLY DATA

STATIC PRESSURE	100 PSI
RESIDUAL PRESSURE	90 PSI
FLOW	675 GPM

NOTES:
 1. WATER FLOW INFO PROVIDED BY JASON V. WITH JB FIRE ON 2/5/2021
 2. THE UNDERGROUND FIRE SERVICE SHOWN ON THIS PLAN IS FOR REFERENCE ONLY. THE ACTUAL CONSTRUCTION MAY VARY.

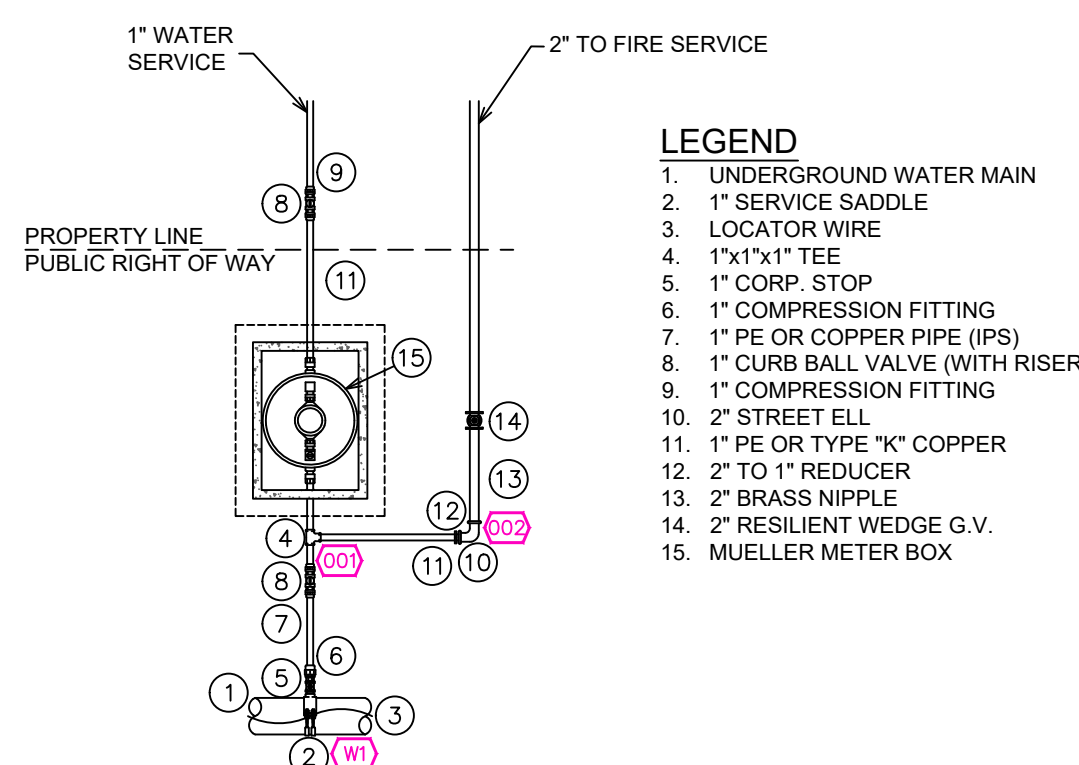
SPRINKLER HEAT ZONES:

HEAT SOURCE:	ORDINARY TEMP SPRINKLER	INTERMEDIATE TEMP SPRINKLER
SIDE OF OPEN OR RECESSED FIRE PLACE	36"	12"
FRONT OF RECESSED FIRE PLACE	60"	36"
COAL OR WOOD BURNING STOVE	42"	12"
RANGE/OVEN, HOT AIR FLUES & UNINSULATED HEAT DUCT	18"	9"
UNINSULATED HOT WATER PIPES & 250-499 WATT LIGHTS	12"	6"
SIDE OF CEILING OR WALL MOUNTED HOT AIR DIFFUSERS	24"	12"
FRONT OF WALL MOUNTED HOT AIR DIFFUSERS	36"	18"
HOT WATER HEATER, FURNACE, LIGHT FIXTURE 0-250 WATT	6"	3"



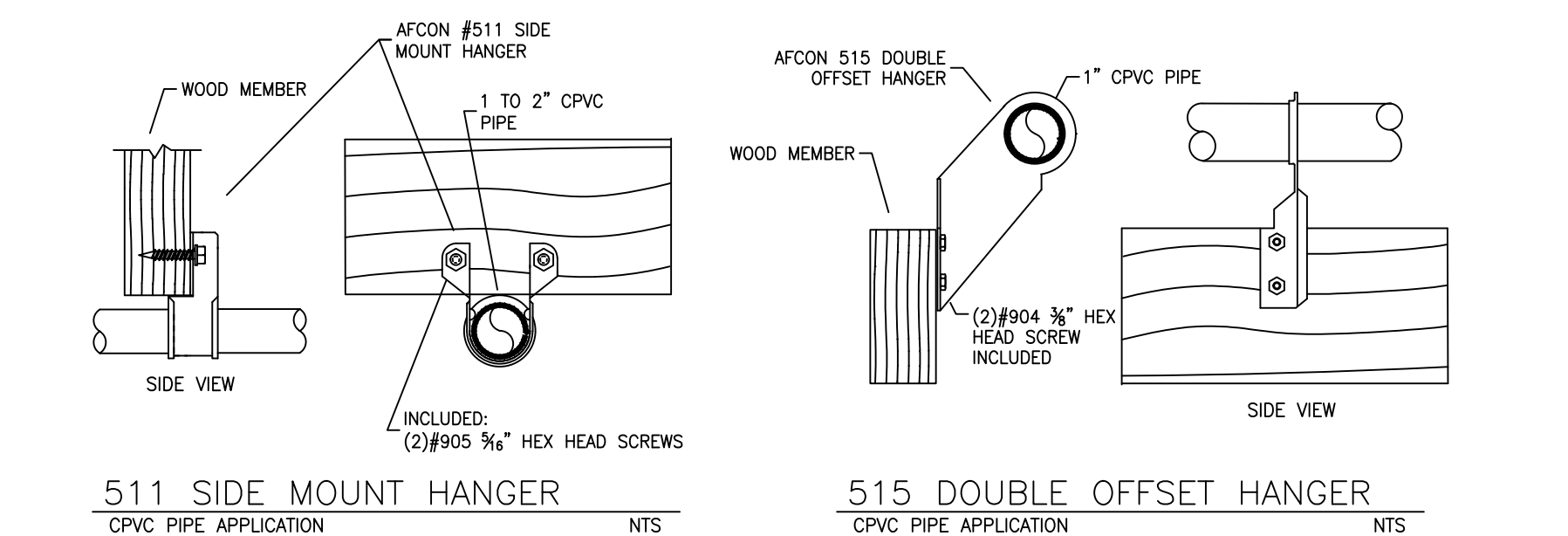
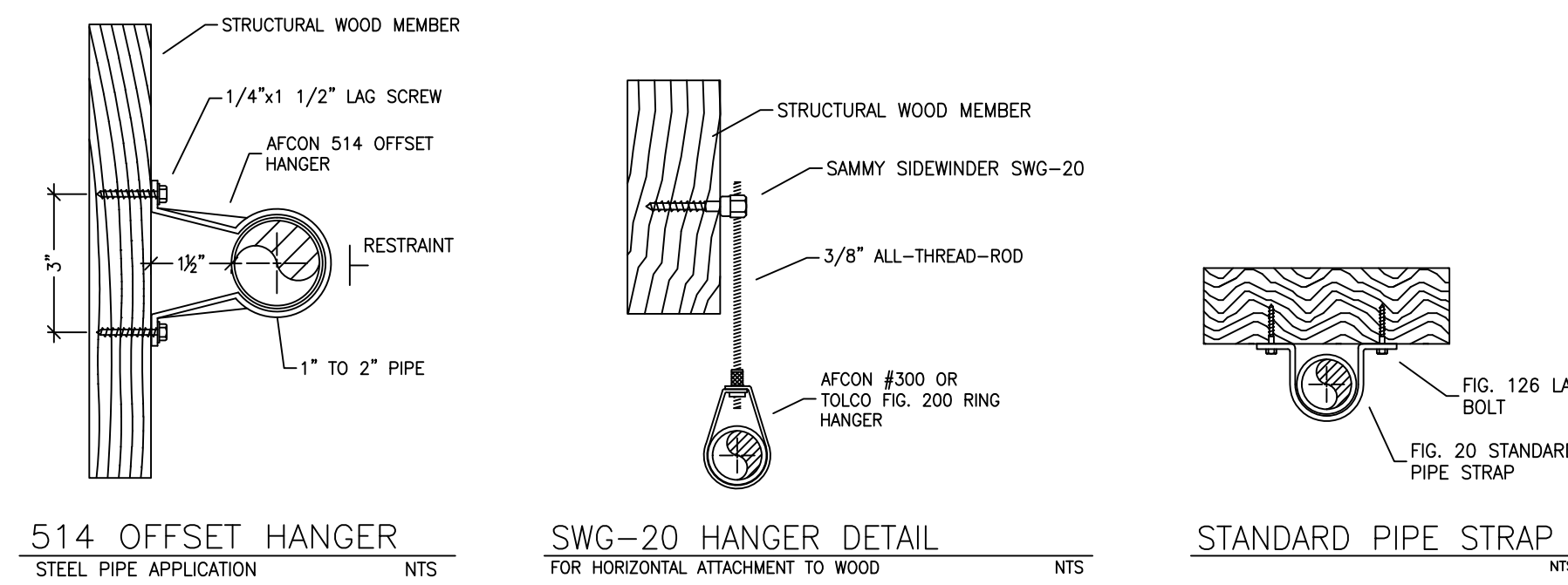
BUILDING SECTION

SCALE: 1/8" = 1'-0"



WATER METER DETAIL

SCALE: NTS



HANGER DETAILS

SPRINKLER SPACING

- A SINGLE PENDENT SPRINKLER MAY BE SPACED AT A MAXIMUM OF 18'x18' (324 SQ. FT.) OR UP TO 10' OFF A WALL
- TWO OR MORE HEADS IN A COMPARTMENT SHALL BE SPACED AT A MAXIMUM OF 16'x16' (256 SQ. FT.) OR UP TO 8' OFF A WALL. HEADS ON LOWER LEVEL MAY BE SPACED 18'x18'
- SPRINKLERS SHALL BE MEASURED AT PERPENDICULAR ANGLES TO WALLS AND ALONG THE SLOPES OF CEILINGS.

NFPA 13 - Table 9.2.2.1(a) Maximum Distance Between Hangers (ft.-in.)

Nominal Pipe Size (in.)	Nominal Pipe Size (in.)									
	1/2	3/4	1	1 1/2	2	2 1/2	3	4	6	8
Steel Pipe except threaded	N/A	12-0	12-0	15-0	15-0	15-0	15-0	15-0	15-0	15-0
Threaded lightweight steel pipe	N/A	12-0	12-0	15-0	15-0	15-0	15-0	N/A	N/A	N/A
Copper tube	8-0	8-0	10-0	10-0	12-0	12-0	12-0	15-0	15-0	15-0
CPVC	5-6	6-0	6-6	7-0	8-0	9-0	10-0	N/A	N/A	N/A

PROJECT SQUARE FOOTAGES

LOWER LEVEL = 3477 S.F.
 MAIN LEVEL = 5076 S.F.
 UPPER LEVEL = 1159 S.F.
 TOTAL = 9712 S.F.

SUBMITTAL

REMOTE AREA 1

Hydraulically Calculated System

This system as shown on Fire Protection Plan company print no. FPT1 dated 4/6/2021 for CasheW 480 at North Suite contract no. [] is designed to discharge at a rate of 0.05 gpm (L/min) per sq ft (m²) of floor area over a maximum area of 130 - 2 Sprinkler Heads sq ft (m²) when supplied with water at the rate of 32.4 gpm (L/min) at 87.6 psi (bars) at the base of the riser. Hose stream allowance of 5 gpm (L/min) is included in the above.

Occupancy classification: 130 LIGHT HAZARD
 Commodity classification: N/A
 Maximum storage height: N/A
 Safety factor: 12.4

REMOTE AREA 2

Hydraulically Calculated System

This system as shown on Fire Protection Plan company print no. FPT1 dated 4/6/2021 for CasheW 480 at North Bunk Bath contract no. [] is designed to discharge at a rate of 0.05 gpm (L/min) per sq ft (m²) of floor area over a maximum area of 130 - Most Demanding Room sq ft (m²) when supplied with water at the rate of 31.2 gpm (L/min) at 69.4 psi (bars) at the base of the riser. Hose stream allowance of 5 gpm (L/min) is included in the above.

Occupancy classification: 130 LIGHT HAZARD
 Commodity classification: N/A
 Maximum storage height: N/A
 Safety factor: 30.6

REMOTE AREA 3

Hydraulically Calculated System

This system as shown on Fire Protection Plan company print no. FPT1 dated 4/6/2021 for CasheW 480 at Guest Bath contract no. [] is designed to discharge at a rate of 0.05 gpm (L/min) per sq ft (m²) of floor area over a maximum area of 130 - 2 Sprinkler Heads sq ft (m²) when supplied with water at the rate of 31.3 gpm (L/min) at 83.4 psi (bars) at the base of the riser. Hose stream allowance of 5 gpm (L/min) is included in the above.

Occupancy classification: 130 LIGHT HAZARD
 Commodity classification: N/A
 Maximum storage height: N/A
 Safety factor: 6.6

REMOTE AREA 5

Hydraulically Calculated System

This system as shown on Fire Protection Plan company print no. FPT1 dated 4/6/2021 for CasheW 480 at Guest Bath contract no. [] is designed to discharge at a rate of 0.05 gpm (L/min) per sq ft (m²) of floor area over a maximum area of 130 - 2 Sprinkler Heads sq ft (m²) when supplied with water at the rate of 31.3 gpm (L/min) at 67.5 psi (bars) at the base of the riser. Hose stream allowance of 5 gpm (L/min) is included in the above.

Occupancy classification: 130 LIGHT HAZARD
 Commodity classification: N/A
 Maximum storage height: N/A
 Safety factor: 32.5

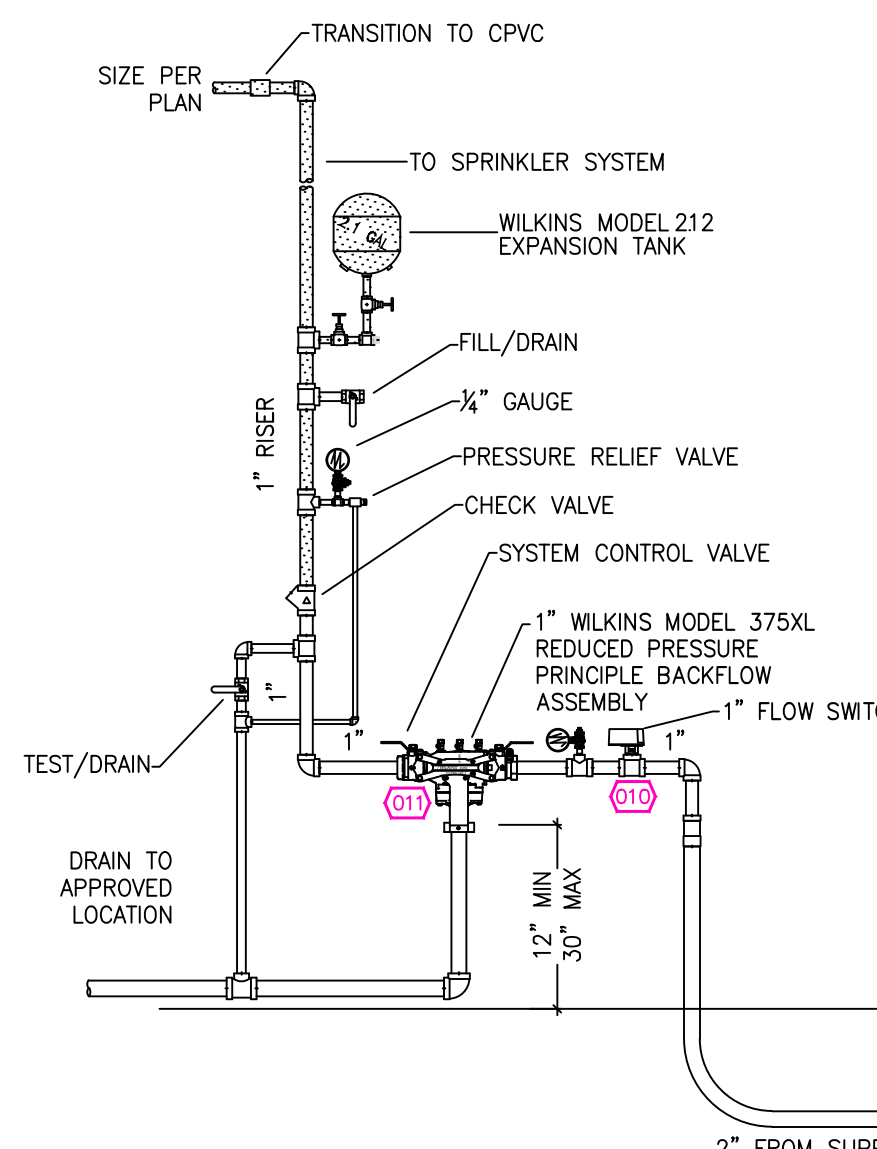
REMOTE AREA 6

Hydraulically Calculated System

This system as shown on Fire Protection Plan company print no. FPT1 dated 4/6/2021 for CasheW 480 at Book/Kitchen contract no. [] is designed to discharge at a rate of 0.05 gpm (L/min) per sq ft (m²) of floor area over a maximum area of 130 - 2 Sprinkler Heads sq ft (m²) when supplied with water at the rate of 31.6 gpm (L/min) at 79.0 psi (bars) at the base of the riser. Hose stream allowance of 5 gpm (L/min) is included in the above.

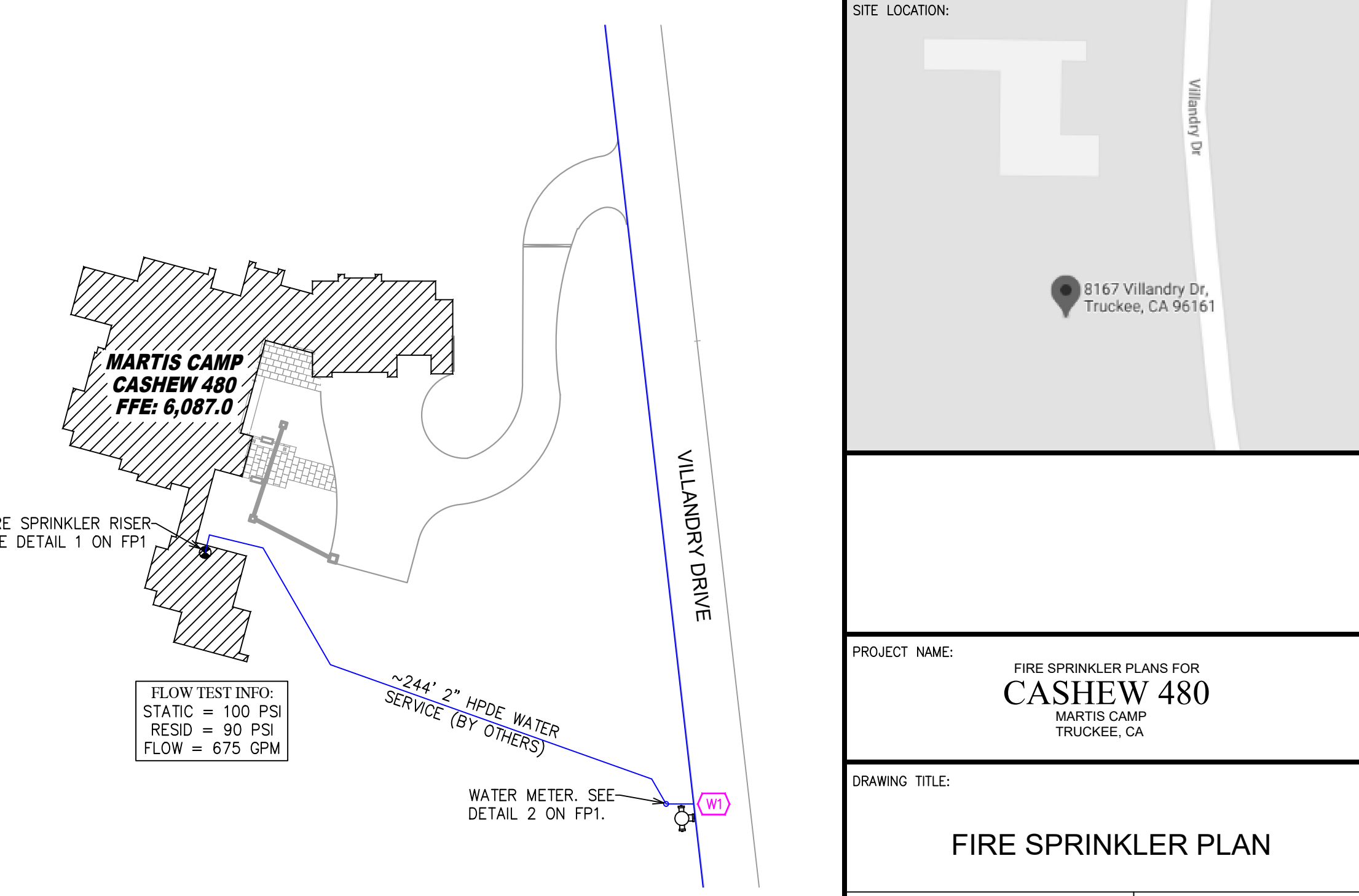
Occupancy classification: 130 LIGHT HAZARD
 Commodity classification: N/A
 Maximum storage height: N/A
 Safety factor: 21.0

THIS FIRE SPRINKLER SYSTEM UTILIZES THE TYCO LFP ANTI-FREEZE SOLUTION



RISER DETAIL

SCALE: NTS



SITE PLAN

SCALE: 1" = 50'-0"

NO.	DATE	REVISIONS	DRAWN	CHECKED

GENERAL CONTRACTOR: AUTHORITY HAVING JURISDICTION: TOWN OF TRUCKEE BUILDING DIVISION
 ADDRESS: 10183 TRUCKEE AIRPORT RD
 CITY: TRUCKEE, CA 96161
 PHONE: 530-582-7820
 CONTACT: CONTACT:

ARCHITECT: FIELD INSPECTIONS:
 1.
 2.
 3.
 4.

FIRE SPRINKLER NOTES:

- THE PROPOSED FIRE SPRINKLER SYSTEM IS AN ANTI-FREEZE SYSTEM AND SHALL BE DESIGNED AND INSTALLED IN ACCORDANCE WITH NFPA 13D AND THE AUTHORITY HAVING JURISDICTION.
- THIS SPRINKLER SYSTEM IS HYDRAULICALLY CALCULATED IN ACCORDANCE WITH NFPA 13D TO PROVIDE 0.05 GPM PER SQ. FT. OVER THE MOST REMOTE AREA.
- THE NUMBER OF DESIGN SPRINKLERS SHALL INCLUDE ALL SPRINKLERS WITHIN A COMPARTMENT UP TO A MAXIMUM OF 2 SPRINKLERS AND SHALL BE ABLE TO PROVIDE A MINIMUM DISCHARGE OF 17 GPM TO ANY SINGLE SPRINKLER.
- ALL SPRINKLER PIPING CONCEALED ABOVE CEILINGS SHALL BE CPVC PIPING UNLESS OTHERWISE NOTED.
- ALL DIMENSIONS SHOWN ARE CENTER TO CENTER U.O.N.
- ALL HANGERS SHALL BE INSTALLED IN ACCORDANCE WITH NFPA 13D AND/OR NFPA 13 REQUIREMENTS.
- Holes through solid structural members shall be permitted to serve as hangers for the support of system piping.
- ALL SYSTEM PIPING SHALL BE TESTED FOR LEAKAGE AT NORMAL SYSTEM OPERATING PRESSURE.
- THE OWNER SHALL BE RESPONSIBLE FOR MAINTAINING A MINIMUM TEMPERATURE OF 40° FAHRENHEIT TO PROTECT FROM FREEZING. THE SECTIONS OF THE SPRINKLER SYSTEM WHERE THERE IS NO ANTI-FREEZE IN THE PIPING (UPSTREAM OF THE RISER).

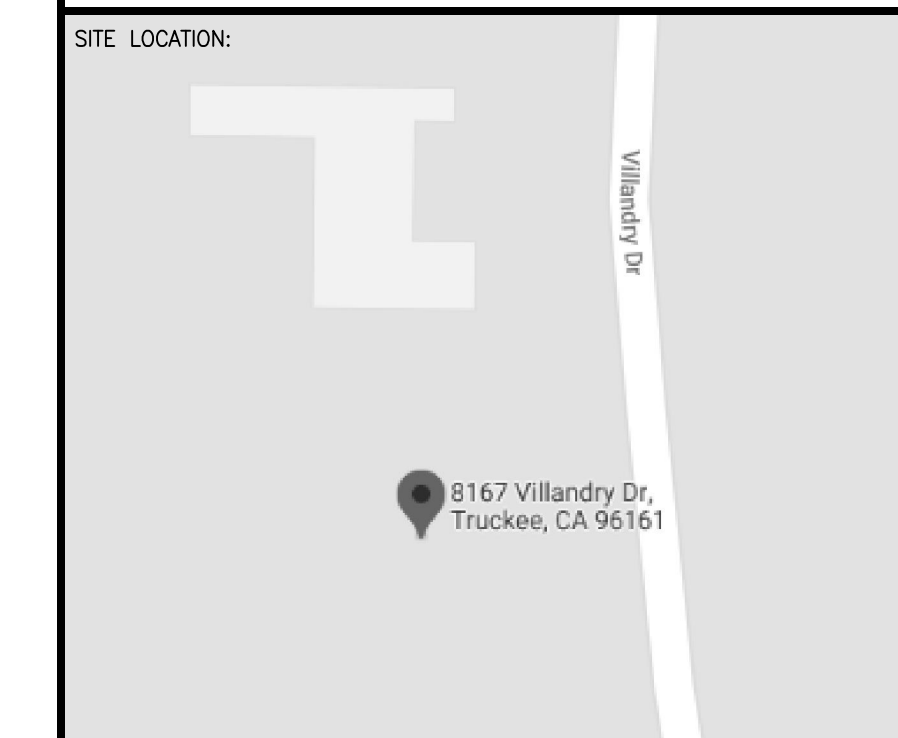
SPRINKLER HEAD LEGEND

SYM	QTY	TYPE	MFG.	MODEL #	NPT	K	TEMP	FINISH	S.I.N.
⊗	9	CONCEALED	SENJA	RC-RES	1/2"	4.9	162	WHITE	SS8464

9 TOTAL SPRINKLERS ON THIS SHEET

FIRE SPRINKLER SYMBOLS

⊗	AUTOMATIC SPRINKLER RISER	+13" ELEV. BELOW DECK OR TOS
⊕	EARTHQUAKE BRACING	+12"-9" ELEV. ABOVE FINISHED FLOOR
+	2-WAY & 4-WAY	— CHANGE ELEVATION UP
+	PIPE HANGER & TYPE DESIGNATION	— CHANGE ELEVATION DN
⊙	HYDRAULIC REF TP	— INSPECTORS TEST
—	GRVD OR THRD CAP	— AUX DRAIN
+	GRVD COUPLING	— REVISION NOTATION
⊕	TYPICAL POINT OF CONNECTION (POC)	— LOCAL ALARM



PROJECT NAME: FIRE SPRINKLER PLANS FOR CASHEW 480
 MARTIS CAMP TRUCKEE, CA

DRAWING TITLE: FIRE SPRINKLER PLAN

SCALE: 1/8" = 1'-0" JOB NO.: 4/6/2021
 DRAWN BY: DWG NO.:
 BORN ON DATE: 4/6/2021 FP-1
 FILE: 4/6/2021 SHEET 1 OF 2

PIPE VOLUMES: (CPVC)

TOTAL PIPE FOOTAGE AND CAPACITY:
 1" = 434' (13.53 GAL)
 1/2" = 444' (21.96 GAL)

ADD 10% FOR DROPS AND PIPE SIZE DISCREPANCIES
 TOTAL VOLUME: ±39.03 GALLONS

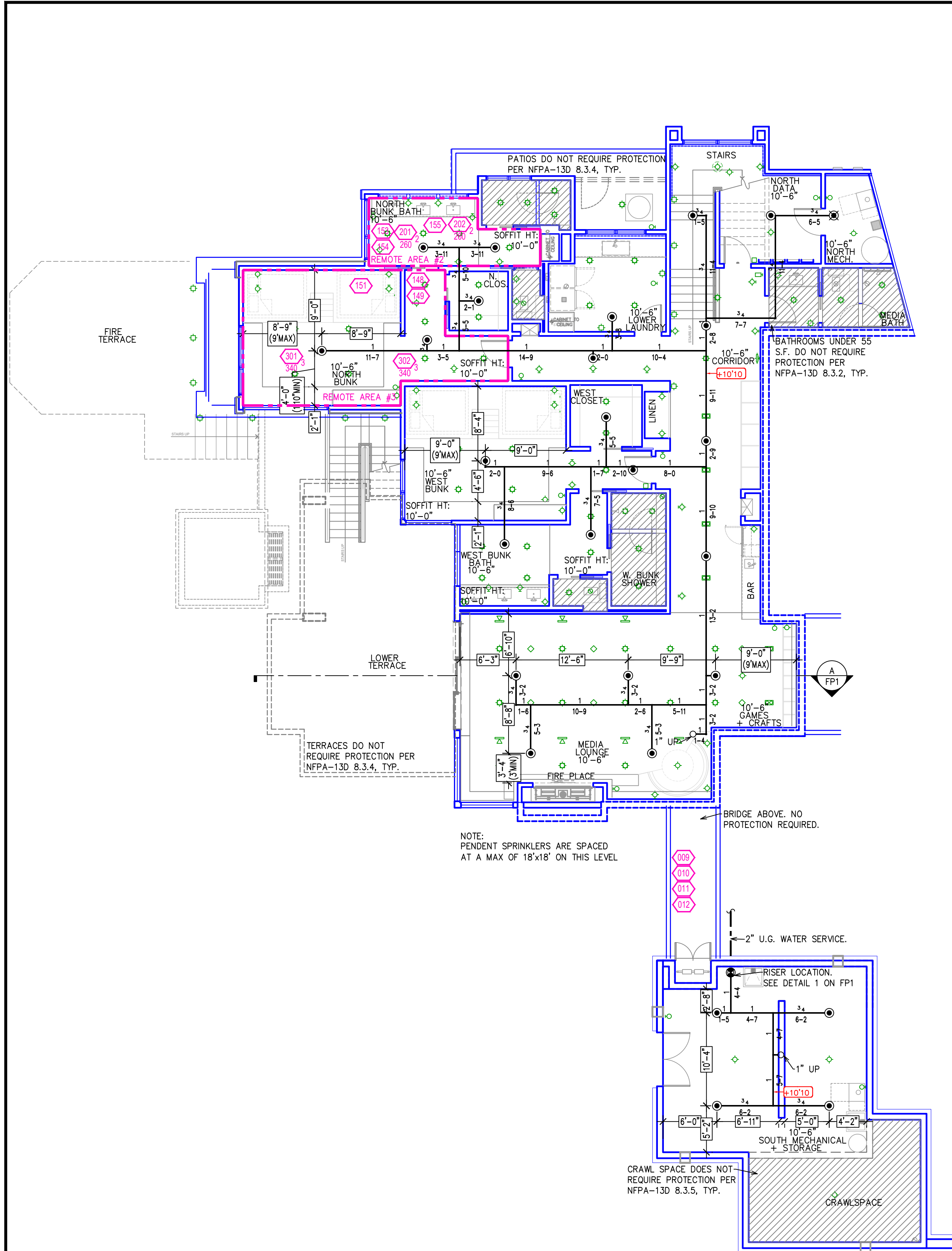
PROJECT SUMMARY:

PROJECT NAME: CASHEW 480
 PROJECT ADDRESS: MARTIS CAMP, TRUCKEE, CA
 APN: []
 PROJECT TYPE: NEW T.I.
 TYPE OF CONSTRUCTION: V
 OCCUPANCY GROUP(S): R3
 OCCUPIED LEVELS: 3
 TOTAL SPRINKLERED AREA: 9712 SQ. FT.
 NFPA CODE REQUIREMENT: NFPA 13 NFPA 13R NFPA 13D
 NUMBER OF SYSTEMS: 1
 SYSTEM TYPE(S): WET ANTI-FREEZE DRY PREACTION
 TOTAL SPRINKLERS: 74
 SPECIAL NOTES: SEE FIRE SPRINKLER NOTES THIS SHEET

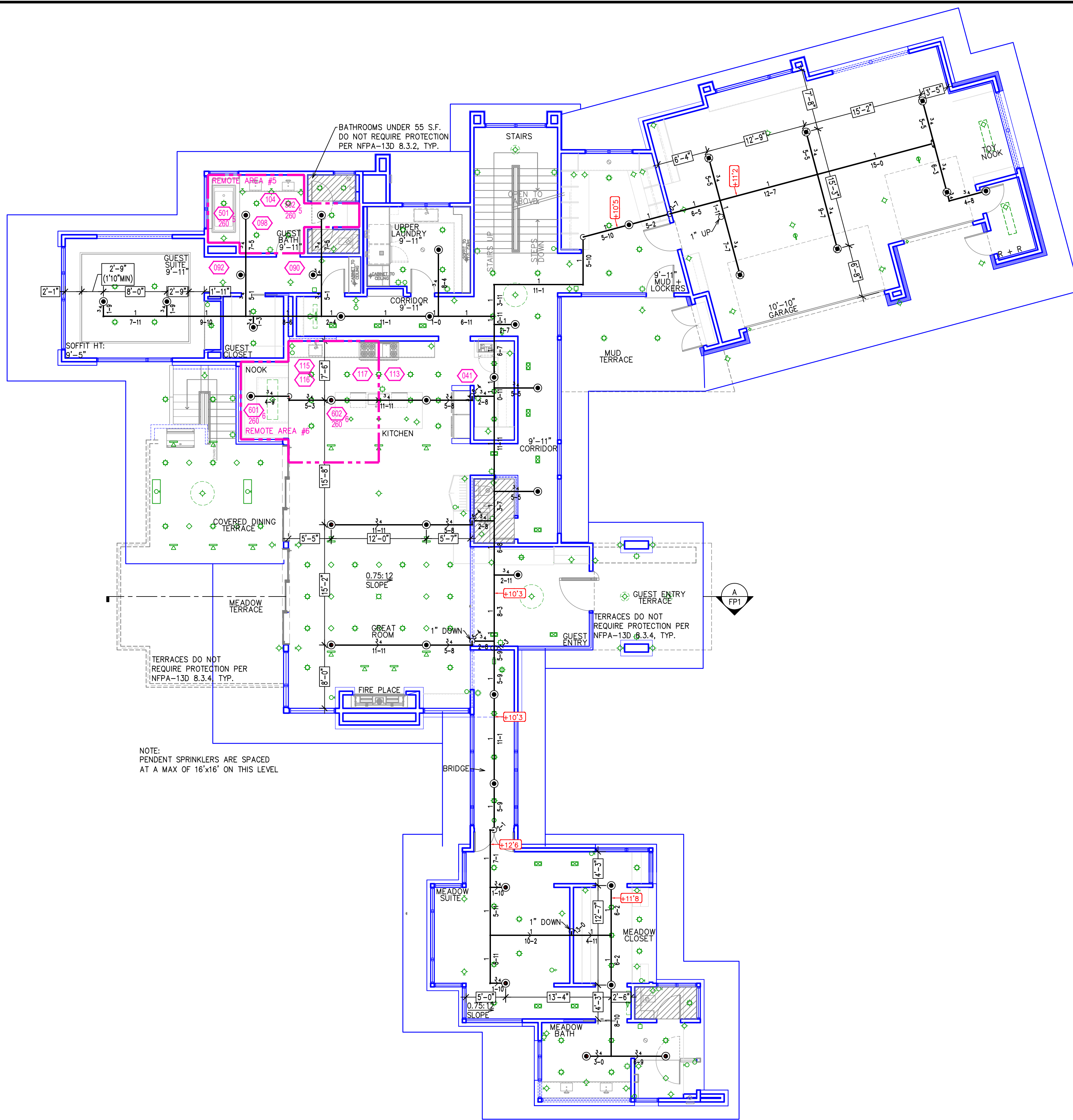
NO SPRINKLERS REQUIRED IN:
 BATHROOMS 55 SQ.FT. OR LESS IN AREA PER NFPA 13D SECTION 8.6.2
 CLOSETS 24 SQ.FT. OR LESS IN AREA PER NFPA 13D SECTION 8.6.3

NFPA 13 - Table A.7.2.3 Capacity of 1 ft of pipe (Based on Actual Internal Pipe Diameter)

Nominal Pipe Diameter (in.)	Schedule 40	Schedule 10	CPVC
1	0.045	0.049	0.049
1/2	0.078	0.085	0.079
1/2	0.106	0.115	0.104
2	0.174	0.190	
2 1/2	0.248	0.283	



FIRE SPRINKLER PLAN – LOWER LEVEL
 SCALE: 1/8" = 1'-0"



FIRE SPRINKLER PLAN – MAIN LEVEL
 SCALE: 1/8" = 1'-0"

NO.	DATE	REVISIONS	DRAWN	CHECKED
GENERAL CONTRACTOR:		AUTHORITY HAVING JURISDICTION:		
ADDRESS:		TOWN OF TRUCKEE BUILDING DIVISION		
CITY:		ADDRESS: 10183 TRUCKEE AIRPORT RD		
PHONE:		CITY: TRUCKEE, CA 96161		
CONTACT:		PHONE: 530-582-7820		
ARCHITECT:		CONTACT:		
ADDRESS:		FIELD INSPECTIONS:		
CITY:		1.		
PHONE:		2.		
		3.		
		4.		

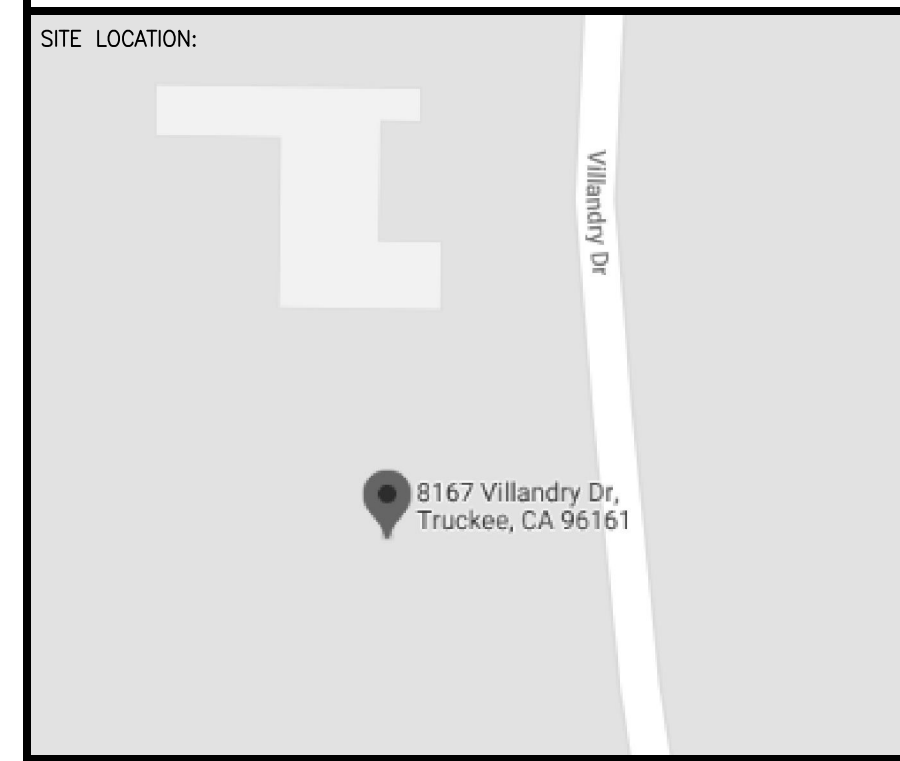
- FIRE SPRINKLER NOTES:**
1. THE PROPOSED FIRE SPRINKLER SYSTEM IS AN ANTI-FREEZE SYSTEM AND SHALL BE DESIGNED AND INSTALLED IN ACCORDANCE WITH NFPA 13D AND THE AUTHORITY HAVING JURISDICTION.
 2. THIS SPRINKLER SYSTEM IS HYDRAULICALLY CALCULATED IN ACCORDANCE WITH NFPA 13D TO PROVIDE 0.05 GPM PER SQ. FT. OVER THE MOST REMOTE AREA.
 3. THE NUMBER OF DESIGN SPRINKLERS SHALL INCLUDE ALL SPRINKLERS WITHIN A COMPARTMENT UP TO A MAXIMUM OF 2 SPRINKLERS AND SHALL BE ABLE TO PROVIDE A MINIMUM DISCHARGE OF 17 GPM TO ANY SINGLE SPRINKLER.
 4. ALL SPRINKLER PIPING CONCEALED ABOVE CEILINGS SHALL BE CPVC PIPING UNLESS OTHERWISE NOTED.
 5. ALL DIMENSIONS SHOWN ARE CENTER TO CENTER U.O.N.
 6. ALL HANGERS SHALL BE INSTALLED IN ACCORDANCE WITH NFPA 13D AND/OR NFPA 13 REQUIREMENTS.
 7. HOLES THROUGH SOLID STRUCTURAL MEMBERS SHALL BE PERMITTED TO SERVE AS HANGERS FOR THE SUPPORT OF SYSTEM PIPING.
 8. ALL SYSTEM PIPING SHALL BE TESTED FOR LEAKAGE AT NORMAL SYSTEM OPERATING PRESSURE.
 9. THE OWNER SHALL BE RESPONSIBLE FOR MAINTAINING A MINIMUM TEMPERATURE OF 40° FAHRENHEIT TO PROTECT FROM FREEZING, THE SECTIONS OF THE SPRINKLER SYSTEM WHERE THERE IS NO ANTI-FREEZE IN THE PIPING (UPSTREAM OF THE RISER).

SPRINKLER HEAD LEGEND

SYM	QTY	TYPE	MFG.	MODEL #	NPT	K	TEMP	FINISH	S.I.N.
⊗	58	CONCEALED	SENJ	RC-RES	1/2"	4.9	162	WHITE	SS8464
⊙	6	SEM-RECESS	SENJ	FR-RES	1/2"	4.9	175	WHITE	SS4451
⊗	1	CONCEALED	SENJ	RC-RES	1/2"	4.9	175	WHITE	SS8464

64 TOTAL SPRINKLERS ON THIS SHEET

- FIRE SPRINKLER SYMBOLS**
- ⊗ AUTOMATIC SPRINKLER RISER +13" ELEV. BELOW DECK OR TOS
 - ⊕ EARTHQUAKE BRACING +12'-9" ELEV. ABOVE FINISHED FLOOR
 - 2-WAY & 4-WAY — CHANGE ELEVATION UP
 - PIPE HANGER & — CHANGE ELEVATION DN
 - TYPE DESIGNATION — INSPECTORS TEST
 - HYDRAULIC REF PT — AUX DRAIN
 - GRVD OR THRD CAP — REVISION NOTATION
 - GRVD COUPLING — LOCAL ALARM
 - ⊕ TYPICAL POINT OF CONNECTION (POC)



PROJECT NAME:
 FIRE SPRINKLER PLANS FOR
CASHEW 480
 MARTIS CAMP
 TRUCKEE, CA

DRAWING TITLE:
FIRE SPRINKLER PLAN

SCALE: 1/8" = 1'-0"	JOB NO.: 4/6/2021
DRAWN BY:	DWG NO.:
BORN ON DATE: 4/6/2021	FP-2
FILE: 4/6/2021	SHEET 2 OF 2