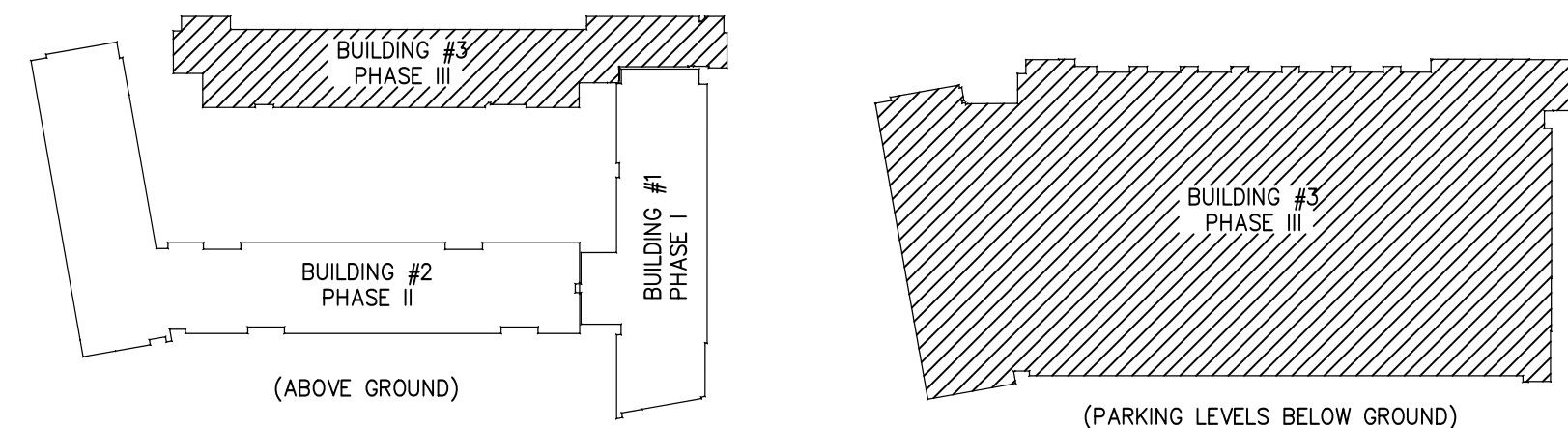
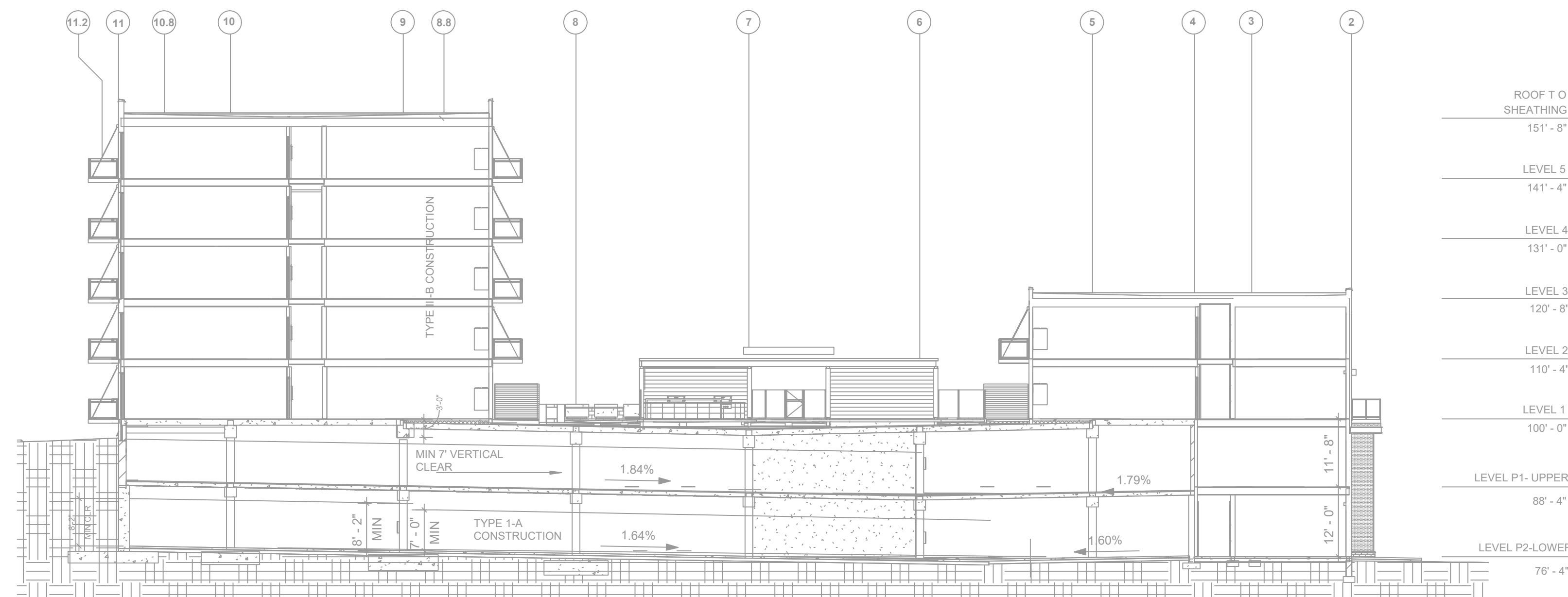


ZONE LEGEND	COVERAGE AREA (FT ²)	ELEVATION FROM GRADE	SHEET #	NOTES	NO. SPRINKLERS
P2 AREA "A" (ZONE #1)	41,472 (FT ²)	-23' - 8"	2	N/A	171
P2 AREA "B" (ZONE #2)	47,330 (FT ²)	-23' - 8"	3	N/A	226
P1 AREA "A" (ZONE #3)	44,278 (FT ²)	-11' - 8"	4	N/A	215
P1 AREA "B" (ZONE #4)	50,941 (FT ²)	-11' - 8"	5	N/A	318
BUILDING #2 LEVEL 1 (ZONE #5)	30,498 (FT ²)	0' - 0"	PREVIOUS SUBMITTAL	N/A	PREVIOUS SUBMITTAL
BUILDING #3 LEVEL 1 (ZONE #6)	18,509 (FT ²)	0' - 0"	6	TWO STORY BUILDING FED FROM SAME ZONE ON LEVEL 1.	175
BUILDING #1 LEVEL #1 (ZONE #7)	14,668 (FT ²)	0' - 0"	PREVIOUS SUBMITTAL	N/A	PREVIOUS SUBMITTAL
BUILDING #1 LEVEL #2 (ZONE #8)	14,668 (FT ²)	12' - 0"	PREVIOUS SUBMITTAL	N/A	PREVIOUS SUBMITTAL
BUILDING #1 & #2 LEVEL 3 (ZONE #9)	30,474 & 15,775 (FT ²)	20' - 8" & 22' - 4"	PREVIOUS SUBMITTAL	N/A	PREVIOUS SUBMITTAL
BUILDING #1 & #2 LEVEL 4 (ZONE #10)	30,474 & 15,775 (FT ²)	31' - 0" & 32' - 8"	PREVIOUS SUBMITTAL	N/A	PREVIOUS SUBMITTAL
BUILDING #1 & #2 LEVEL 5 (ZONE #11)	30,474 & 15,775 (FT ²)	41' - 4" & 43' - 0"	PREVIOUS SUBMITTAL	N/A	PREVIOUS SUBMITTAL

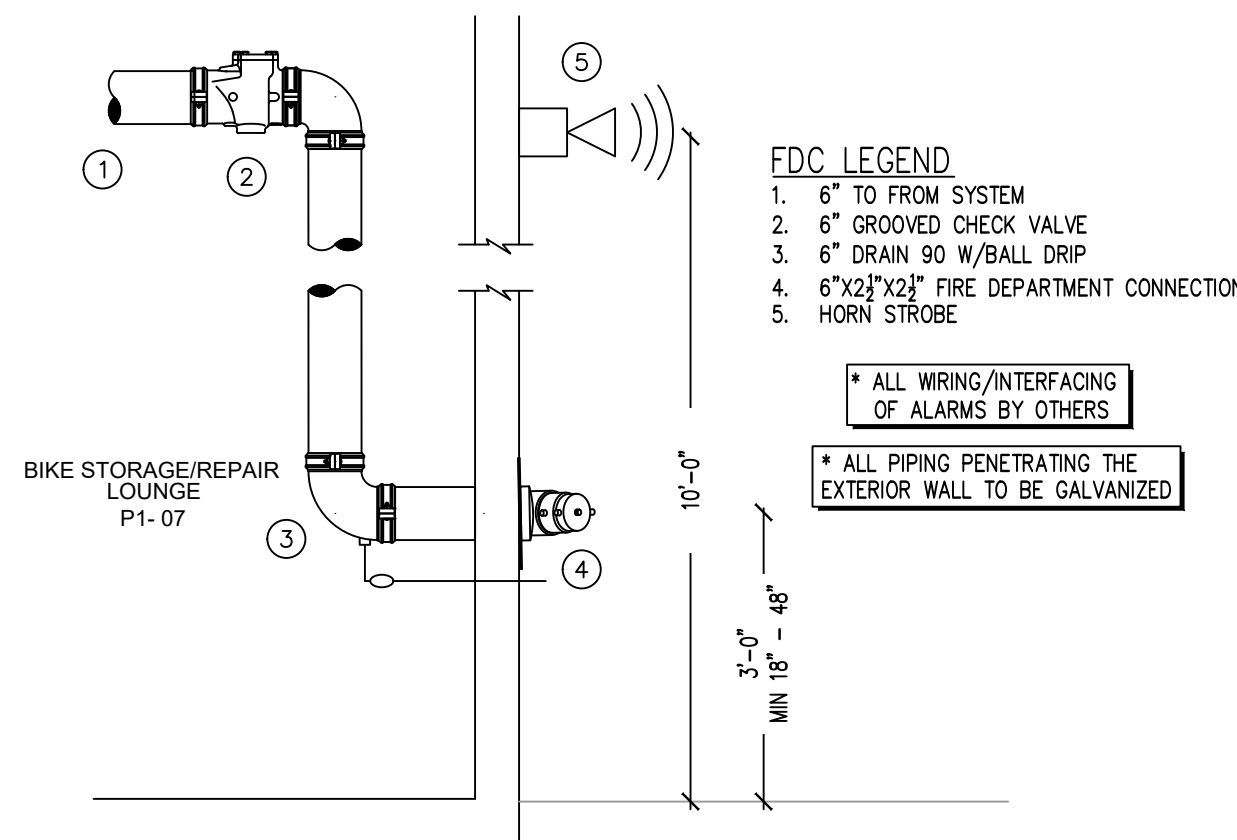
ZONE LEGEND



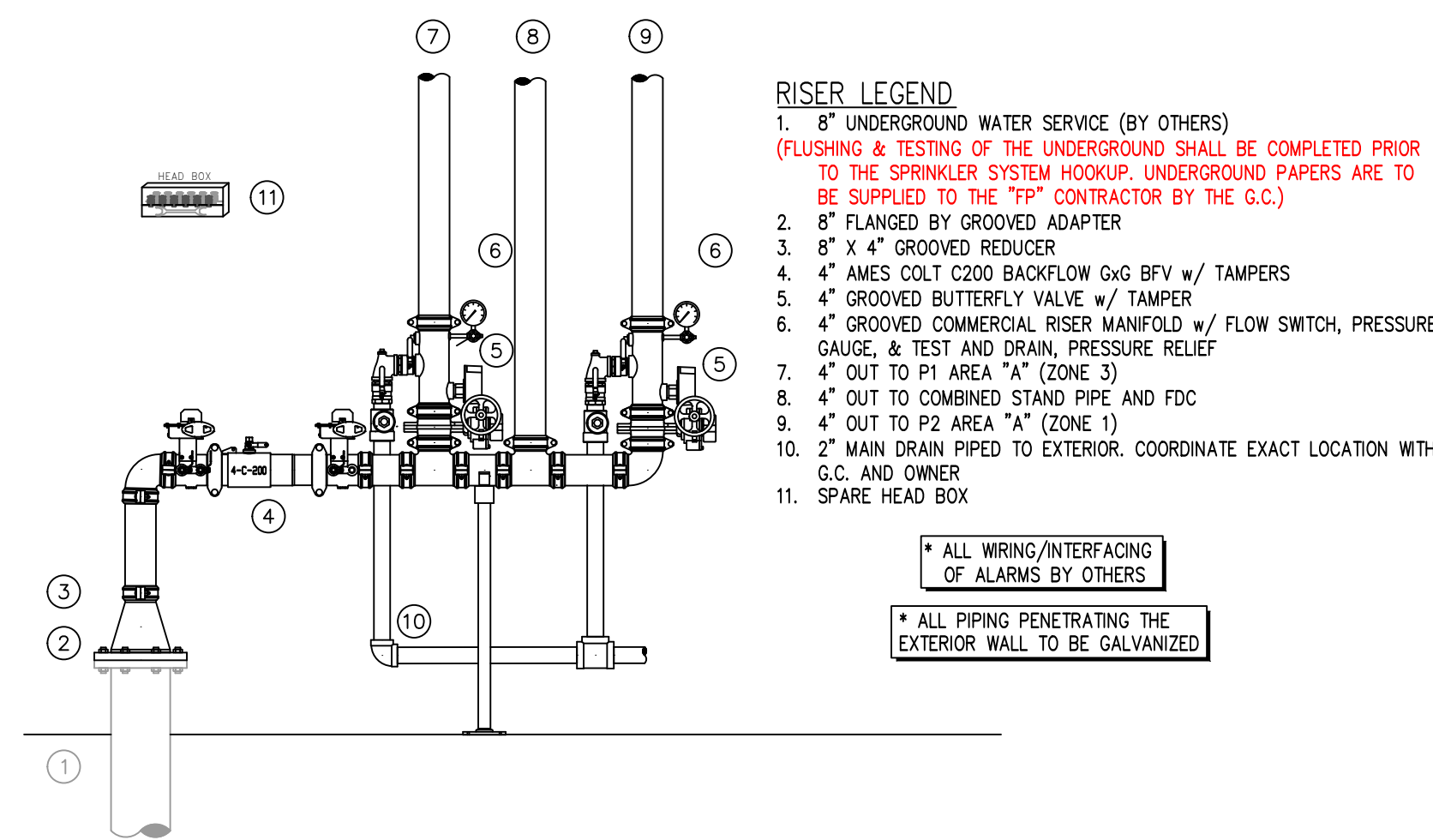
KEY MAP



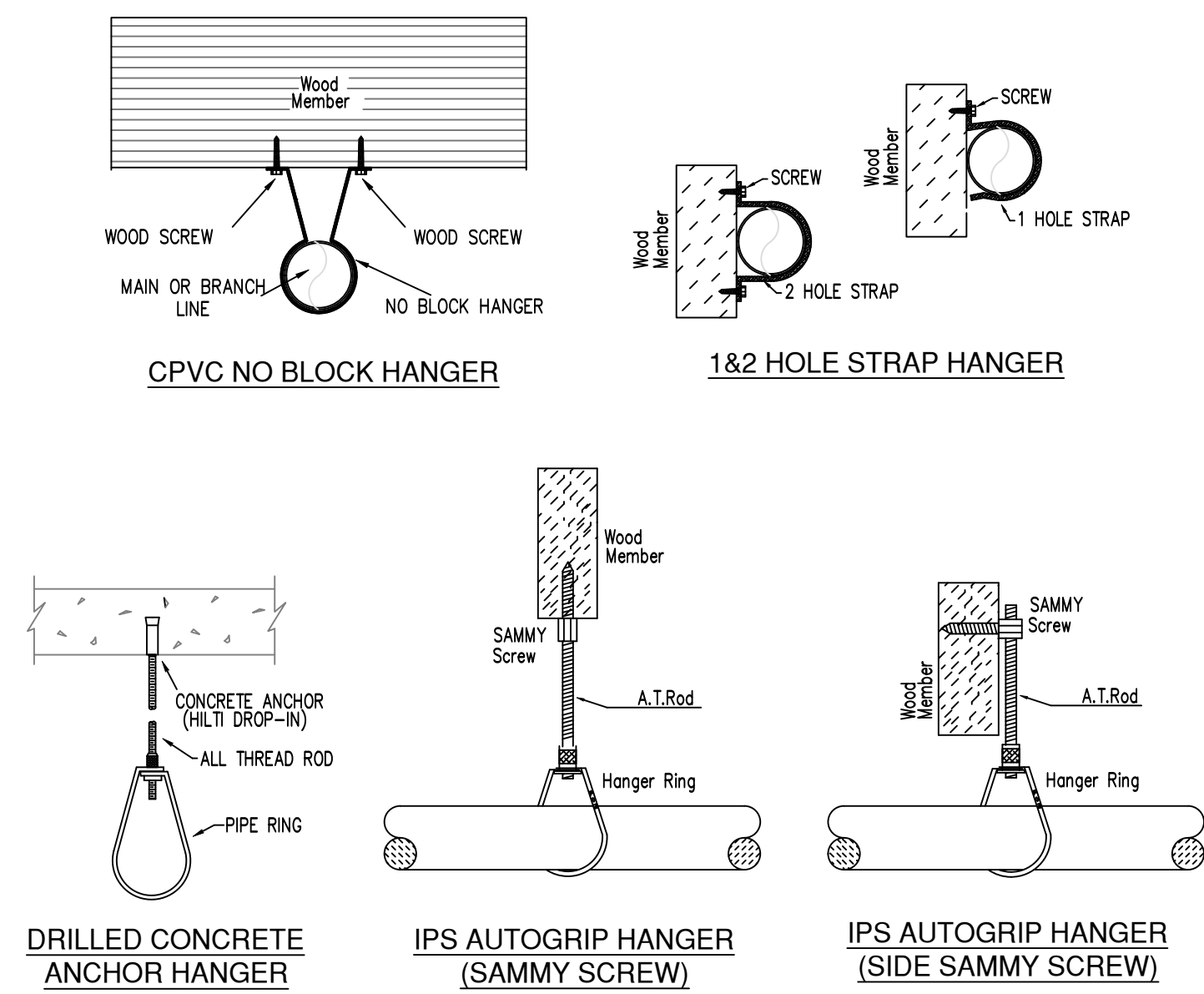
SECTION -A-A
SCALE= 1/16" : 1'-0"



FDC ASSEMBLY DETAIL
SCALE: 1/2" = 1'-0"



VALVE ASSEMBLY DETAIL
SCALE: 1/2" = 1'-0"



HANGER DETAILS

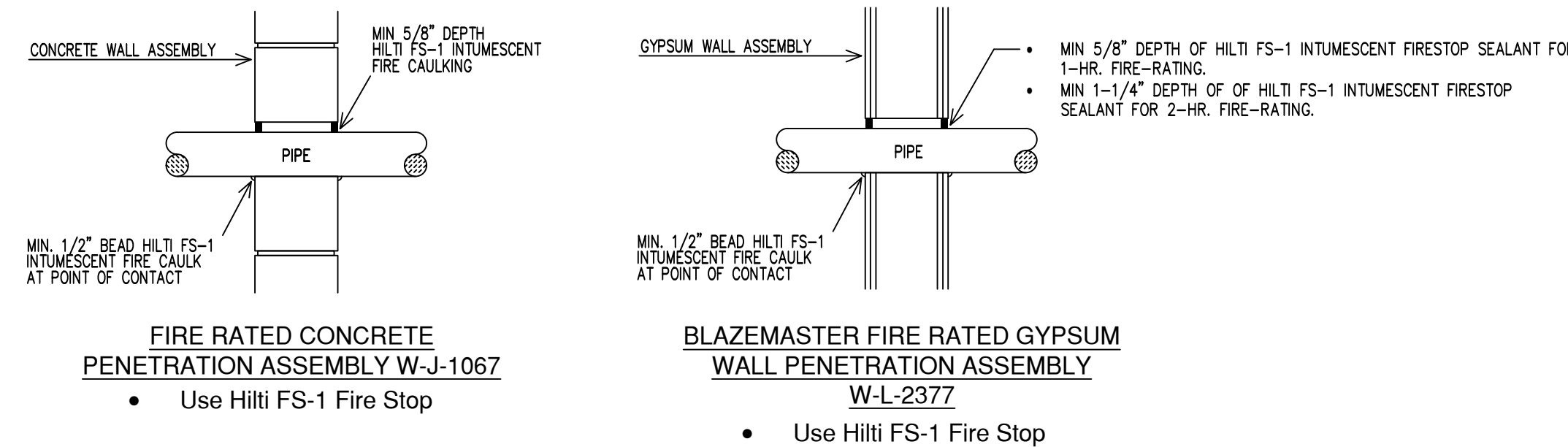
SPRINKLER HEAD LEGEND

SYM	QTY	POSITION	FINISH	TEMP	K	NPT	SN	MFG	MODEL#	ESCU/CHGN	HEAD BOX (2 min)
◀	160	SIDEWALL	WHITE	155	4.40	1/2"	TY2334	TYCO	LFI	TY-FRB	SEMI-RECESSED 2
◀	366	PENDENT	WHITE	155	4.90	1/2"	TY2234	TYCO	LFI	SEMI-RECESSED 2	
◀	12	SIDEWALL	WHITE	155	5.60	1/2"	RA1564	RELIABLE	DH96	SEMI-RECESSED 2	
◀	19	PENDENT	WHITE	155	5.60	1/2"	TY3233	TYCO	TY-FRB	SEMI-RECESSED 2	
◀	1	SIDEWALL	WHITE	155	5.60	1/2"	TY3331	TYCO	TY-FRB	SEMI-RECESSED 2	
◀	3	SIDEWALL	WHITE	155	8.00	3/4"	TY4332	TYCO	TY-FRB	SEMI-RECESSED 2	
◀	65	PENDENT	WHITE	200	5.60	1/2"	TY3233	TYCO	TY-FRB	SEMI-RECESSED 2	
◀	26	PENDENT	WHITE	155	5.60	1/2"	RA5814	RELIABLE	LT56	SEMI-RECESSED 2	
◀	5	SIDEWALL	WHITE	155	4.00	1/2"	W4466	WIKING	FREEDOM	SEMI-RECESSED 2	
◀	3	SIDEWALL	WHITE	155	5.80	1/2"	W4460	WIKING	FREEDOM	SEMI-RECESSED 2	
◀	4	PENDENT	WHITE	155	11.20	3/4"	TY5237	TYCO	EC-11	SEMI-RECESSED 2	
◀	31	UPRIGHT	BRASS	200	5.60	1/2"	TY313	TYCO	TY-FRB	N/A 2	
◀	5	UPRIGHT	BRASS	200	14.00	3/4"	TY6137	TYCO	EC-14	N/A 2	
◀	582	SPRINKL UPRIGHT	BRASS	200	14.00	3/4"	TY6137	TYCO	EC-14	N/A 2	
◀	1	SPRINKL UPRIGHT	BRASS	200	5.60	1/2"	TY313	TYCO	TY-FRB	N/A 2	
◀	1	SPRINKL UPRIGHT	BRASS	200	5.60	1/2"	TY313	TYCO	TY-FRB	N/A 2	
◀	1	UPRIGHT	BRASS	200	5.60	1/2"	TY313	TYCO	TY-FRB	N/A 2	
1320 TOTAL HEADS											

MAXIMUM DISTANCE BETWEEN HANGERS (FT.-IN.)

STEEL PIPE EXCEPT THREADED LIGHTWALL BLAZEMASTER CPVC	NOMINAL PIPE SIZE (IN.)									
	3/4"	1"	1 1/4"	1 1/2"	2"	2 1/2"	3"	4"	6"	8"
STEEL PIPE EXCEPT THREADED LIGHTWALL	NA	12-0	12-0	15-0	15-0	15-0	15-0	15-0	15-0	15-0
BLAZEMASTER CPVC	5-6	6-0	6-6	7-0	8-0	9-0	10-0	NA	NA	NA

NFPA 13 HANGER SPACING



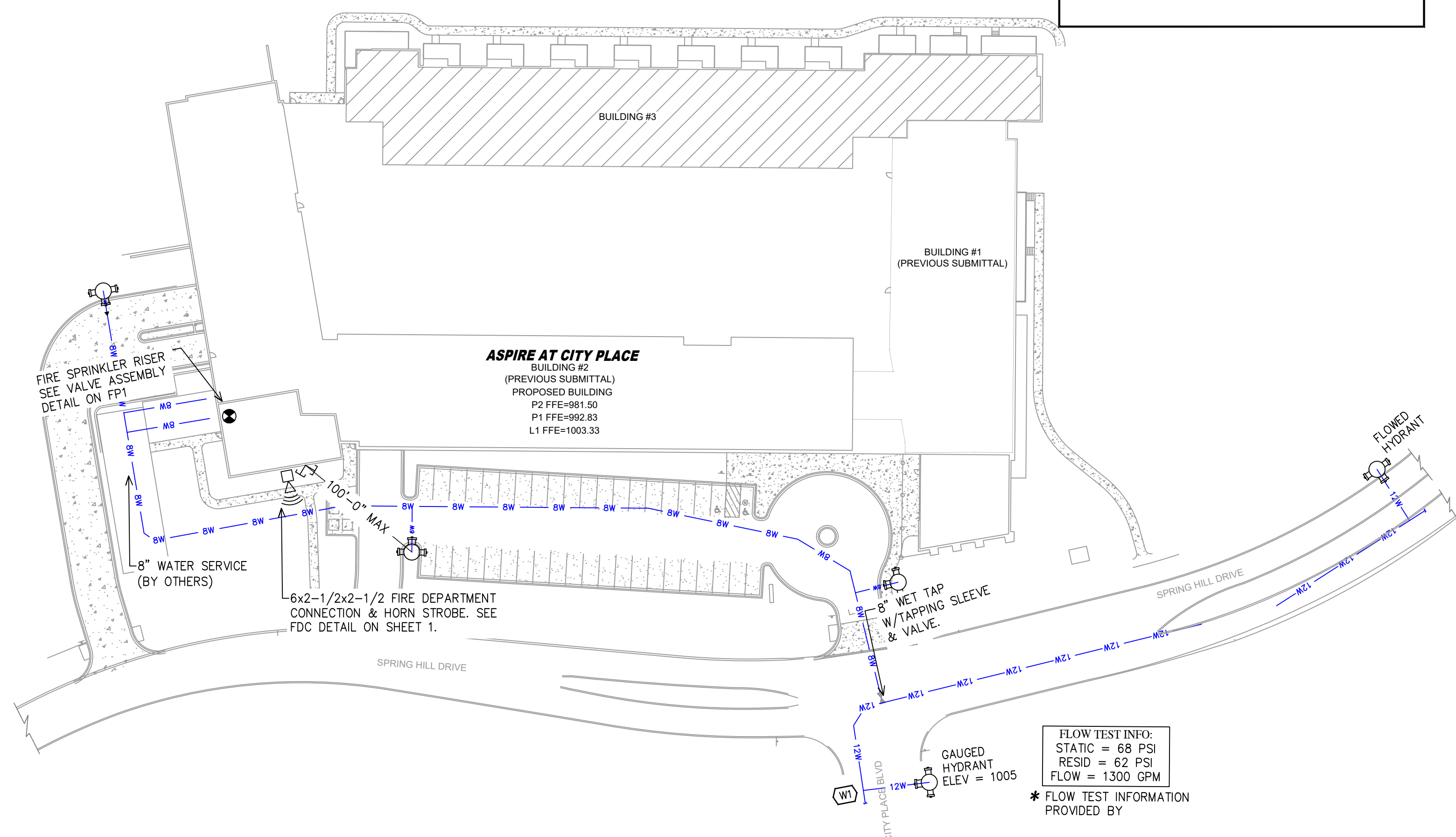
FIRESTOPPING DETAILS

MANUAL WET STANDPIPE
LOCATION: 4TH AND 5TH FLOOR SE STAIRS
REQUIRED FLOW: 500 GPM
OUTLET PSI: 100
REQUIRED INLET PSI: 149.2

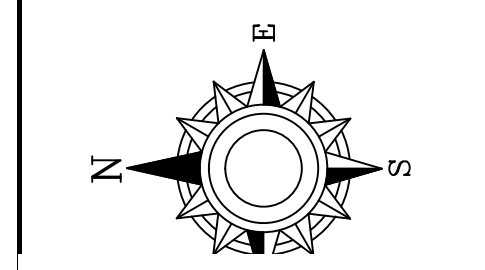
PIPE LEGEND
--- BLACK STEEL SPRINKLER PIPING
--- CPVC BLAZEMASTER SPRINKLER PIPING

SCOPE OF WORK:
TO INSTALL STANDPIPE AND SPRINKLER SYSTEMS IN THE NEW ASPIRE AT CITY PLACE BUILDING AS SHOWN ON THESE SHOP DRAWINGS. ALL PIPING IN PARKING GARAGE TO BE STEEL AND ALL PIPING IN OCCUPIED SPACES TO BE CONCEALED BLAZEMASTER CPVC PIPING WITH SEMI-RECESSED WHITE SPRINKLER HEADS. THE STANDPIPE IS MANUAL WET.

NOTES:
APPLICABLE CODES AND REGULATIONS ~
2015 MN STATE BUILDING CODE (REF. IB 2012)
2015 MN STATE FIRE CODE (REF. NFPA 2016)
BUILDING CLASSIFICATION ~
TYPE II-B FOR FIRST FLOOR AND ABOVE (R-2)
TYPE I-A FOR BELOW FIRST FLOOR (S-2)
TYPE V-A FOR EAST BUILDING
CONSTRUCTION TYPE ~
TYPE II-B FOR FIRST FLOOR AND ABOVE (R-2)
TYPE I-A FOR BELOW FIRST FLOOR (S-2)
TYPE V-A FOR EAST BUILDING
PIPE SCHEDULE ~
1" = SCH. 40
1 1/4" & LARGER = SCH. 10
W/SHORT RADIUS GROOVED FITTINGS
1" THROUGH 3" = BLAZEMASTER CPVC
DESIGN CRITERIA ~
LIGHT HAZARD AREAS - DESIGNED TO DELIVER 0.10 GPM/S.F. OVER THE MOST DEMANDING 1500 S.F.
ORDINARY HAZARD GROUP 1 AREAS - DESIGNED TO DELIVER 0.15 GPM/S.F. OVER THE MOST DEMANDING 1500 S.F.
REMOTE AREA REDUCTIONS HAVE BEEN TAKEN WHERE APPLICABLE PER NFPA 13 SEC. 11.2.3.2.3
FIRE CAULKING ~
ALL FIRE RATED WALLS TO BE CAULKED w/ HILTI FS-ONE FIRE CAULKING AS PER U.L. LISTING FOR WALL TYPE & RATING
AUX. DRAINS ~
SHALL BE PROVIDED WHERE A CHANGE IN PIPING DIRECTION PREVENTS DRAINAGE OF SYSTEM PIPING THROUGH THE MAIN DRAIN VA.
OBSTRUCTIONS ~
ALL SPRINKLER LOCATIONS TO BE SPACED IN ACCORDANCE w/ OBSTRUCTIONS TO MAINTAIN CLEARANCES ~ PER NFPA-13 (EXIT SIGNS & SECURITY EQUIPMENT SHALL NOT BE OBSCURED BY FIRE PROTECTION SYSTEM)
ELEC. EQUIP ~
PROVIDE SHIELDS OR Baffles WHERE WATER DAMAGE MAY RESULT FROM HEADS TO CLOSE TO ELEC. PANELS
SYMBOLS USED ON DRAWING
-500- PIPE ELEVATION A.F.F
-100- PIPE ELEVATION BELOW B.O.D
-100- ROOM HAZARD CLASSIFICATION (ALL ROOMS ARE CONSIDERED LIGHT HAZARD UNLESS NOTED)
-100- HYDRAULIC CALCULATION JUNCTION POINT
9'-0" CEILING HEIGHT



SITE PLAN

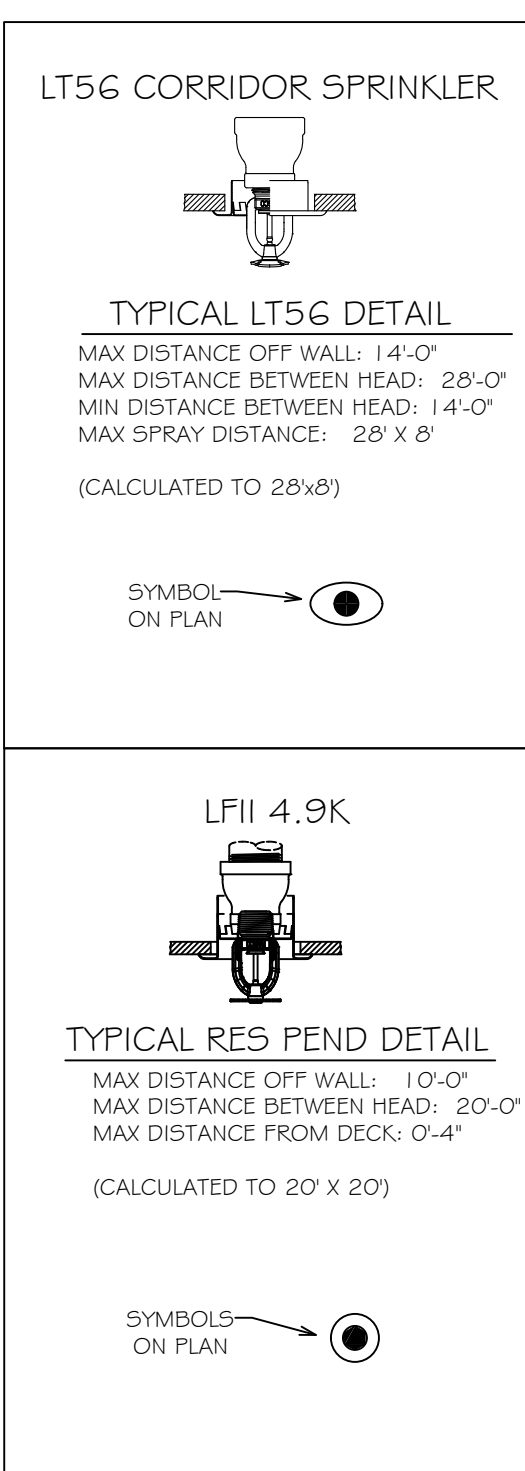
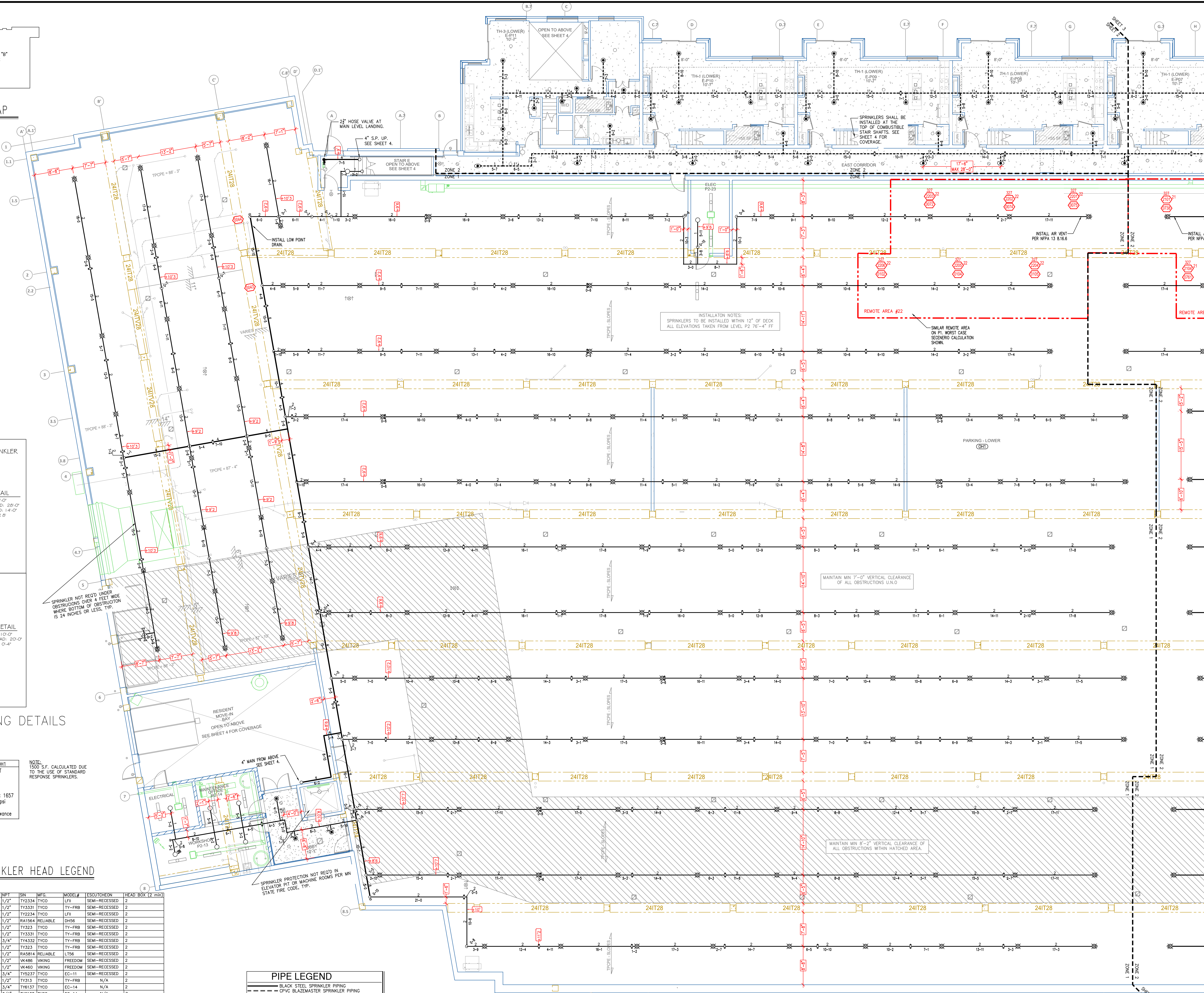
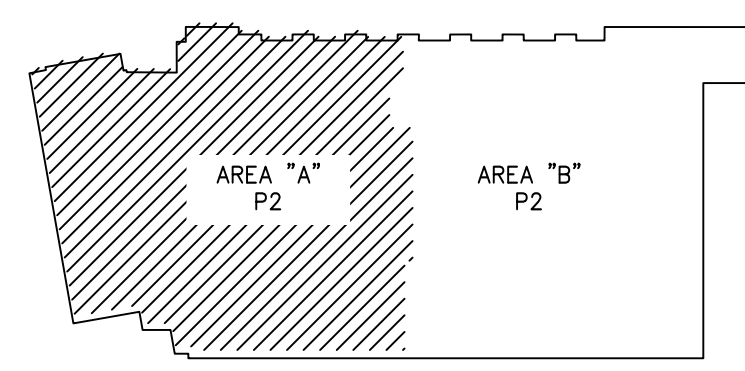


910 N. SYCAMORE AVENUE, STOUX FALLS, SD 57110 PHONE: (605)-444-9290

ASPIRE AT CITY PLACE
BUILDING #3 (EAST & PARKING)
9000 CITY PLACE BLVD
WOODBURY, MN 55125

FIRE PROTECTION PLAN

Contract No. **C20-1**
Drawing Date: 08/26/2020
Scale: 1/8" = 1'-0"
Drawn By:
Approval By: STATE FIRE MARSHAL DIV.
SHEET NO. **1 of 7**



SPRINKLER SPACING DETAILS

CALC PLACARD

Design Area #22 HAZARD:OH1
 Zone: 1 System Type:WET
 Location: P2

Flowing Outlets: 6
 Density: 0.15 Remote Area: 1657
 Flow 572.9 gpm @ 58.7 psi
 Calculation Safety: 8 psi
 Includes 250 gpm hose allowance

SPRINKLER HEAD LEGEND

SY#	QTY	POSITION	FINISH	TEMP	K	NPT	SIN	MFG.	MODEL#	ESCUTCHEON	HEAD BOX (2 min)
160	4	SIDEWALL	WHITE	155	4.40	1/2"	TY2334	TYCO	LFII	SEMI-RECESSED	2
35	4	SIDEWALL	WHITE	200	5.60	1/2"	TY3331	TYCO	TY-FRB	SEMI-RECESSED	2
366	1	PENDENT	WHITE	155	4.90	1/2"	TY2234	TYCO	LFII	SEMI-RECESSED	2
12	1	SIDEWALL	WHITE	155	5.60	1/2"	RA1564	RELIABLE	DH56	SEMI-RECESSED	2
19	1	PENDENT	WHITE	155	5.60	1/2"	TY323	TYCO	TY-FRB	SEMI-RECESSED	2
4	1	SIDEWALL	WHITE	155	5.60	1/2"	TY3331	TYCO	TY-FRB	SEMI-RECESSED	2
3	1	SIDEWALL	WHITE	155	8.00	3/4"	TY4332	TYCO	TY-FRB	SEMI-RECESSED	2
65	1	PENDENT	WHITE	200	5.60	1/2"	TY323	TYCO	TY-FRB	SEMI-RECESSED	2
26	1	PENDENT	WHITE	155	5.60	1/2"	RA5814	RELIABLE	LT56	SEMI-RECESSED	2
5	1	SIDEWALL	WHITE	155	4.00	1/2"	VK486	VKING	FREEDOM	SEMI-RECESSED	2
3	1	SIDEWALL	WHITE	155	5.80	1/2"	VK460	VKING	FREEDOM	SEMI-RECESSED	2
4	1	PENDENT	WHITE	155	11.20	3/4"	TY3237	TYCO	EC-11	SEMI-RECESSED	2
31	1	UPRIGHT	BRASS	200	5.60	1/2"	TY313	TYCO	TY-FRB	N/A	2
5	1	UPRIGHT	BRASS	200	14.00	3/4"	TY6137	TYCO	EC-14	N/A	2
582	1	SPRIG'D UPRIGHT	BRASS	200	14.00	3/4"	TY6137	TYCO	EC-14	N/A	2
11	1	SPRIG'D UPRIGHT	BRASS	200	5.60	1/2"	TY313	TYCO	TY-FRB	N/A	2
1	1	SPRIG'D UPRIGHT	BRASS	200	5.60	1/2"	TY313	TYCO	TY-FRB	N/A	2
1	1	UPRIGHT	BRASS	200	5.60	1/2"	TY313	TYCO	TY-FRB	N/A	2
1320 TOTAL HEADS											

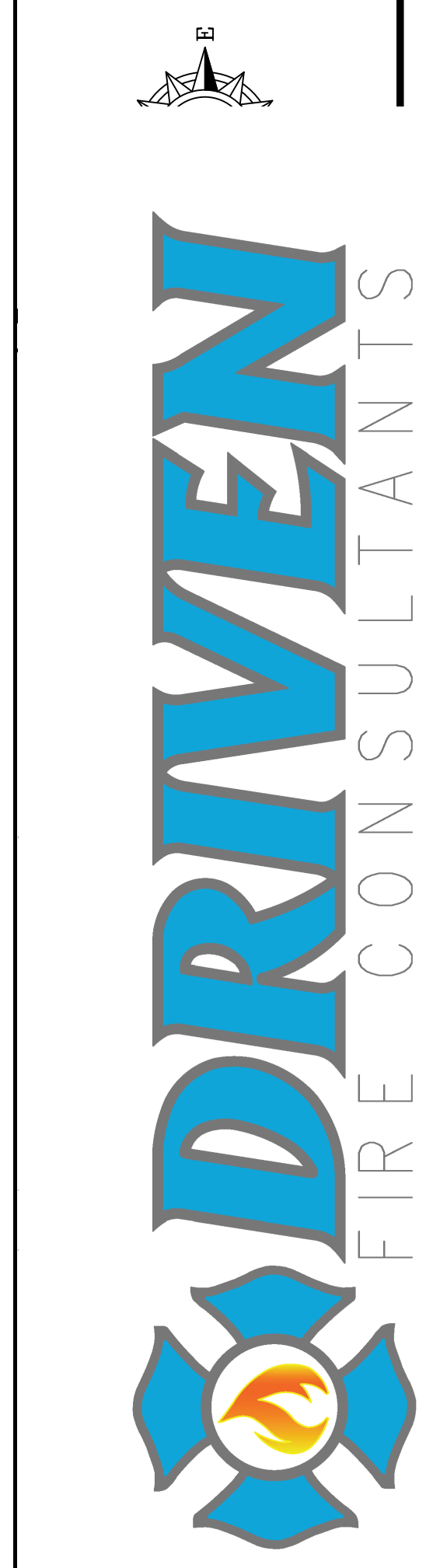
PIPE LEGEND

— BLACK STEEL SPRINKLER PIPING
 - - - CPVC BLAZEMASTER SPRINKLER PIPING

PARKING LEVEL 2 AREA "A"
 SCALE = 1/8" = 1'-0"

APPROVAL STAMPS

General Notes
 1. All work shall be in accordance with the State Fire Marshal.
 2. All piping shall be installed in accordance with the State Fire Marshal.
 3. Minimum pipe size shall be 1" nominal pipe.
 4. All welding shall be done in accordance with the State Fire Marshal.
 5. No installation or fabrication to begin without approved shop drawings.
 6. All piping shall be installed in accordance with the State Fire Marshal.
 7. All dimensions shown are center to center.
 8. Provide one space head cabinet w/ 6 hds. & one hd wrench.
 9. All piping shall be installed in accordance with the State Fire Marshal.
 10. Hangers are to be U.L. Listed and P.M. Approved.
 11. Provide adequate hasting to prevent wet system piping from freezing.
 12. Owner's responsibility to provide adequate hasting to prevent wet system piping from freezing.



ASPIRE AT CITY PLACE
 BUILDING #3 (EAST & PARKING)
 9000 CITY PLACE BLVD
 WOODBURY, MN 55125

910 N. SYCAMORE AVENUE, SIOUX FALLS, SD 57110 PHONE: (605)-444-9290

Drawing Title: **FIRE PROTECTION PLAN**

Contract No: **C20-1**

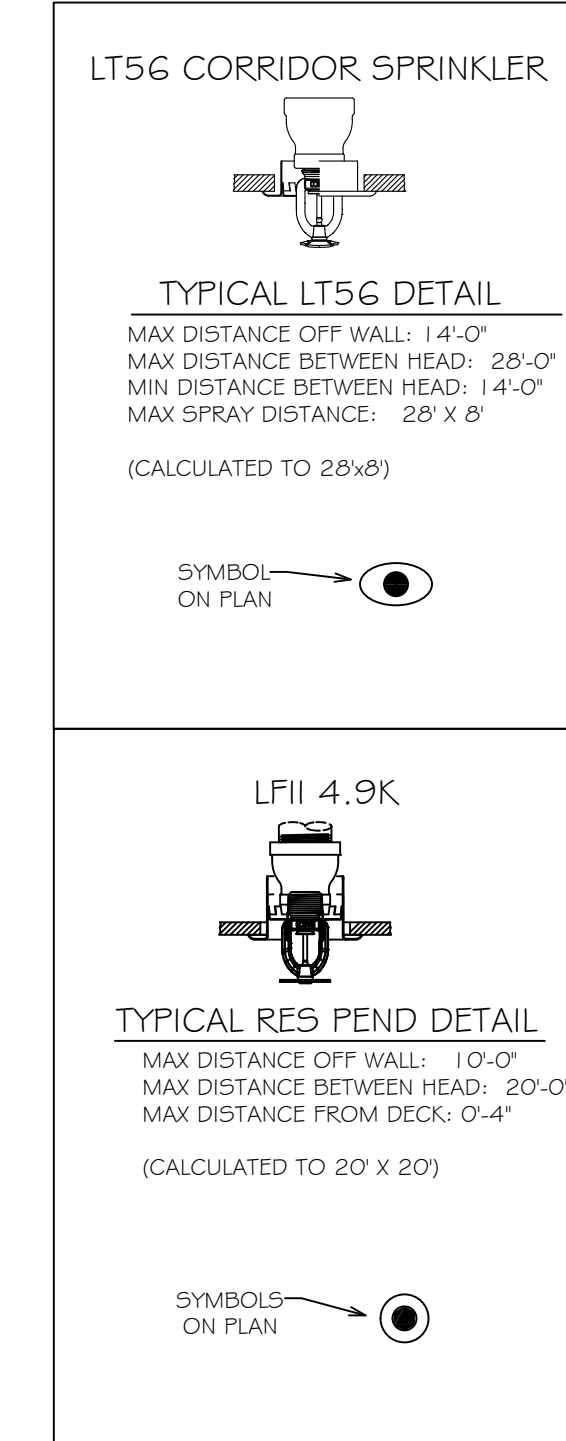
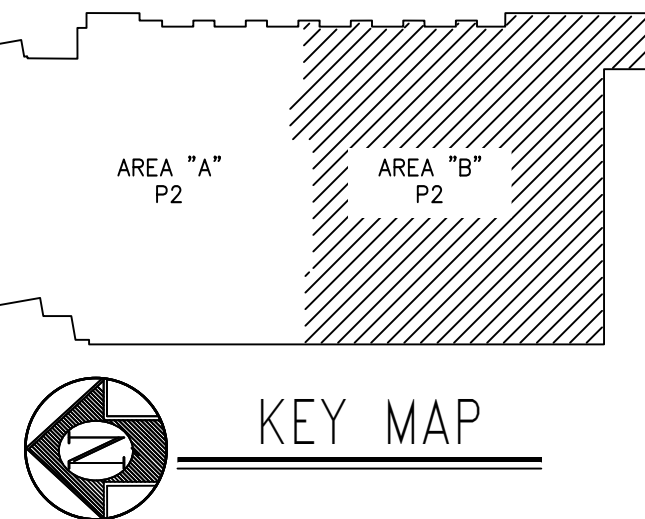
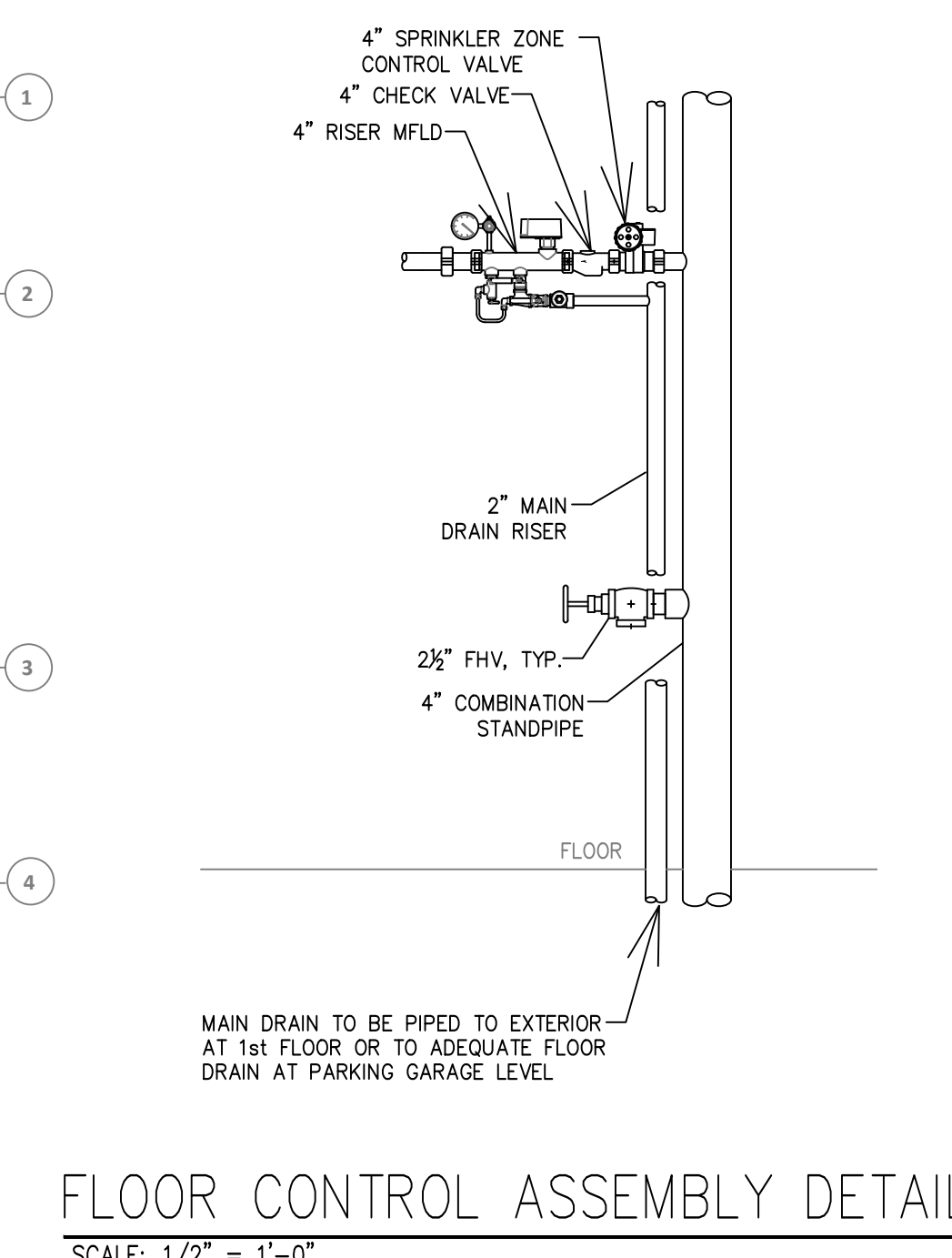
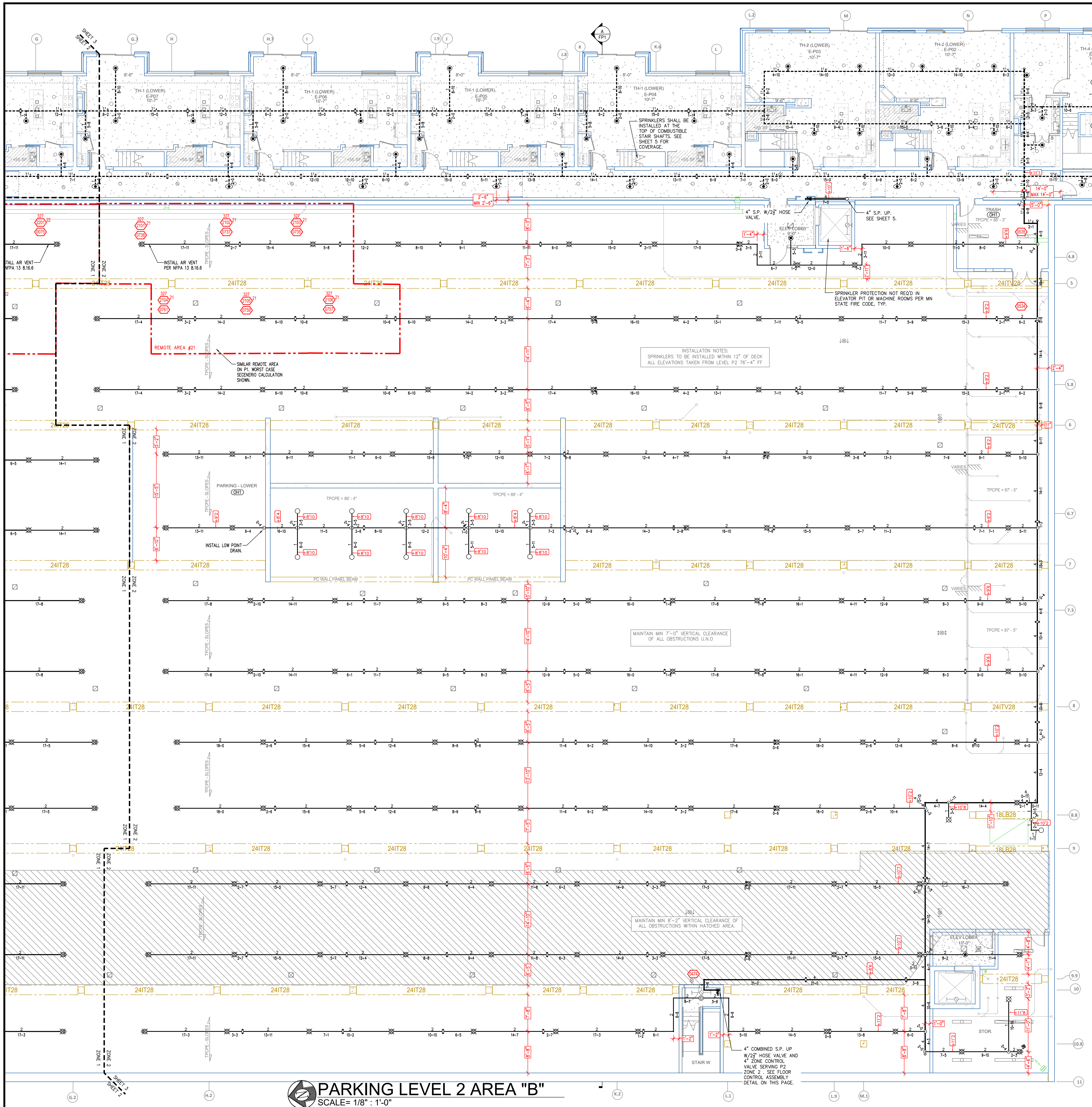
Drawing Date: **08/26/2020**

Scale: **1/8" = 1'-0"**

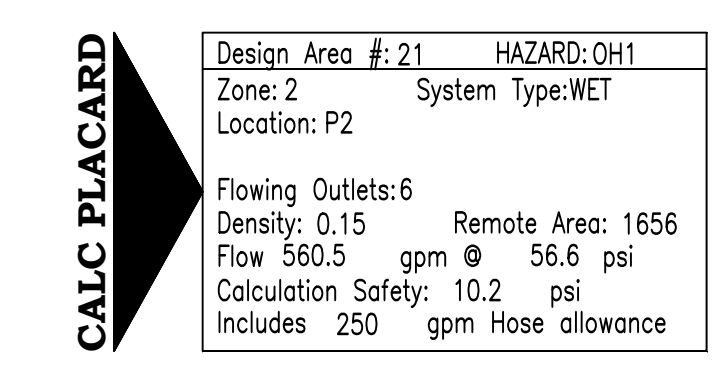
Drawn By:

Approval By: **STATE FIRE MARSHAL DIV.**

SHEET NO: **2 of 7**



SPRINKLER SPACING DETAILS



SPRINKLER HEAD LEGEND

SYM	TEXT	POSITION	FINISH	TEMP	K	NPT	SN	MPIS	MODEL#	ESCUTCHEON	HEAD BOX (2 min)
◀	160	SIDEWALL	WHITE	155	4.40	1/2"	TY2334	TYCO	LPI	SEMI-RECESSED	2
◀	35	SIDEWALL	WHITE	200	5.60	1/2"	TY3331	TYCO	TY-FRB	SEMI-RECESSED	2
●	366	PENDENT	WHITE	155	4.90	1/2"	TY2234	TYCO	LFII	SEMI-RECESSED	2
●	112	SIDEWALL	WHITE	155	5.60	1/2"	RA1564	RELIABLE	DH56	SEMI-RECESSED	2
●	19	PENDENT	WHITE	155	5.60	1/2"	TY323	TYCO	TY-FRB	SEMI-RECESSED	2
◀	11	SIDEWALL	WHITE	155	5.60	1/2"	TY3331	TYCO	TY-FRB	SEMI-RECESSED	2
◀	43	SIDEWALL	WHITE	155	8.00	3/4"	TY4332	TYCO	TY-FRB	SEMI-RECESSED	2
●	65	PENDENT	WHITE	200	5.60	1/2"	TY323	TYCO	TY-FRB	SEMI-RECESSED	2
●	26	PENDENT	WHITE	155	5.60	1/2"	RAS814	RELIABLE	LT56	SEMI-RECESSED	2
◀	15	SIDEWALL	WHITE	155	4.00	1/2"	WK486	WIKING	FREEDOM	SEMI-RECESSED	2
◀	13	SIDEWALL	WHITE	155	5.60	1/2"	WK480	WIKING	FREEDOM	SEMI-RECESSED	2
●	4	PENDENT	WHITE	155	11.20	3/4"	TY3237	TYCO	EC-11	SEMI-RECESSED	2
○	31	UPRIGHT	BRASS	200	5.60	1/2"	TY313	TYCO	TY-FRB	N/A	2
○	5	UPRIGHT	BRASS	200	14.00	3/4"	TY8137	TYCO	EC-14	N/A	2
○	582	SPRIG'D UPRIGHT	BRASS	200	14.00	3/4"	TY8137	TYCO	EC-14	N/A	2
○	11	SPRIG'D UPRIGHT	BRASS	200	5.60	1/2"	TY313	TYCO	TY-FRB	N/A	2
○	11	SPRIG'D UPRIGHT	BRASS	200	5.60	1/2"	TY313	TYCO	TY-FRB	N/A	2
○	1	UPRIGHT	BRASS	200	5.60	1/2"	TY313	TYCO	TY-FRB	N/A	2

1320 TOTAL HEADS



PIPE LEGEND

PARKING LEVEL 2 AREA "B"
SCALE= 1/8" : 1'-0"

APPROVAL STAMPS

General Notes
 1. All equipment shall be installed in accordance with the manufacturer's instructions.
 2. All equipment shall be installed in accordance with the manufacturer's instructions.
 3. Minimum pipe size shall be 1" nominal pipe.
 4. All welding shall be done in accordance with the manufacturer's instructions.
 5. No installation or fabrication to begin without approved shop drawings.
 6. All equipment shall be installed in accordance with the manufacturer's instructions.
 7. All dimensions shown are center to center.
 8. Provide one space head cabinet w/ 6 hds. & one hd wrench.
 9. Provide one space head cabinet w/ 6 hds. & one hd wrench.
 10. Hangers are to be U.L. Listed and F.M. Approved.
 11. Provide adequate hasting to prevent wet system piping from freezing.
 12. Owner's responsibility to provide adequate hasting to prevent wet system piping from freezing.



Drawing Title: **FIRE PROTECTION PLAN**

Contract No: **C20-1**

Drawing Date: **08/26/2020**

Scale: **1/8" = 1'-0"**

Drawn By:

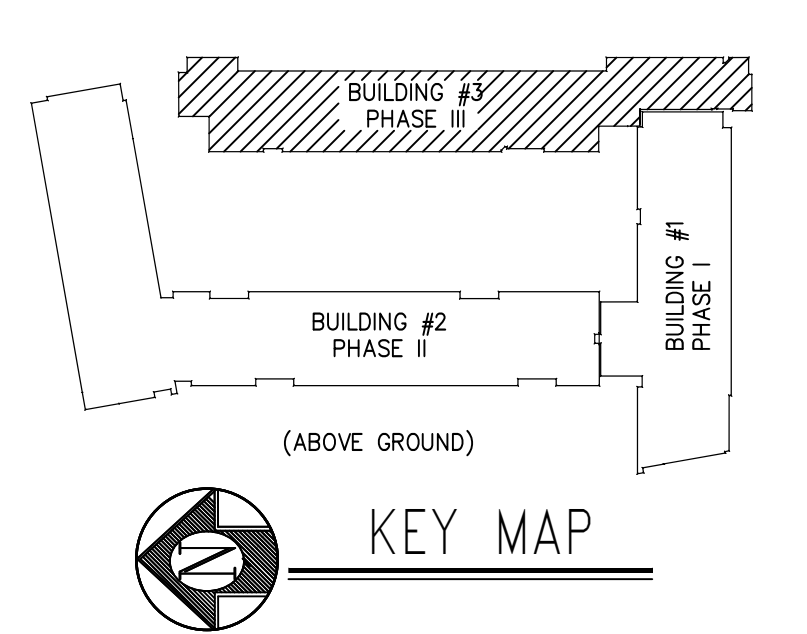
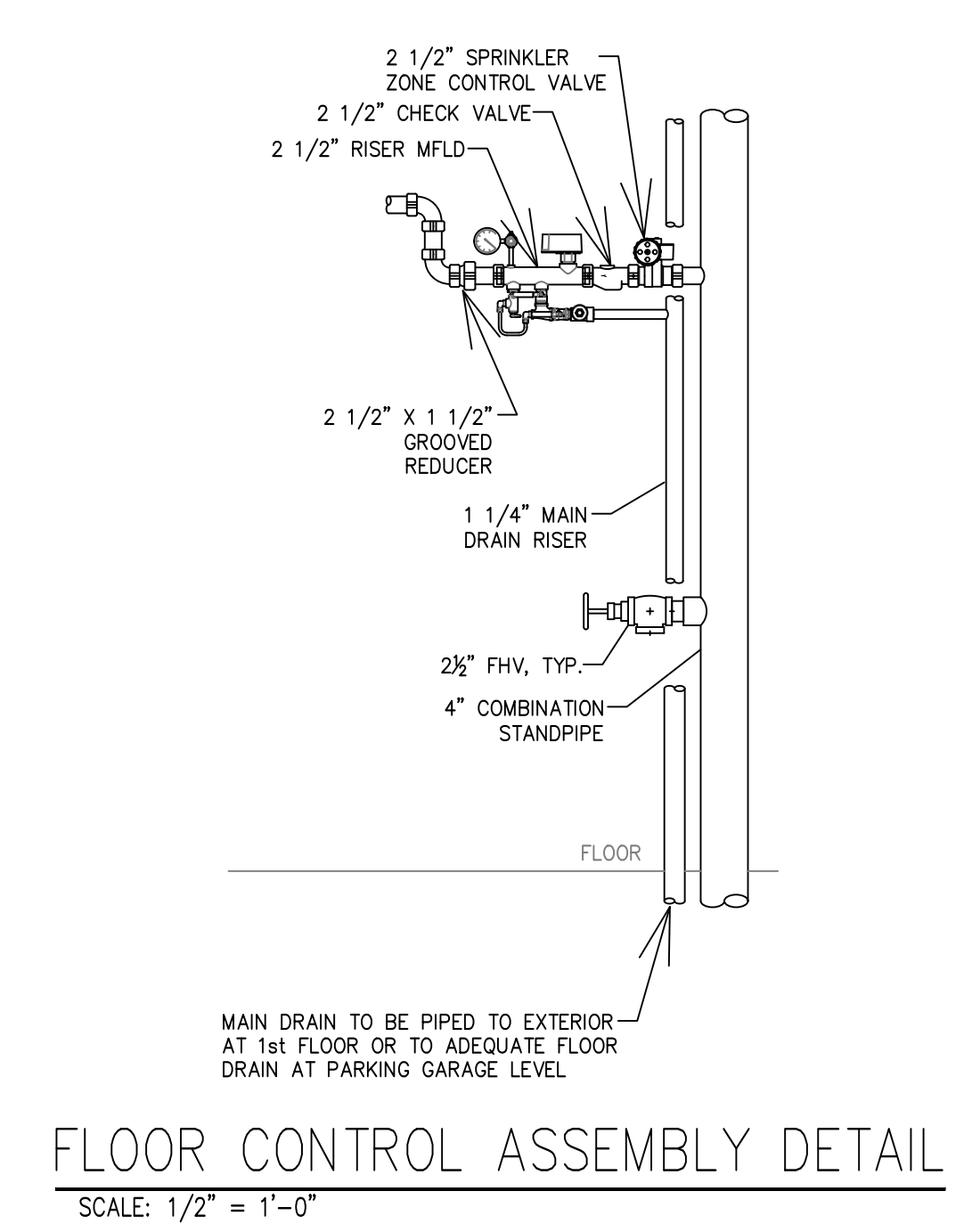
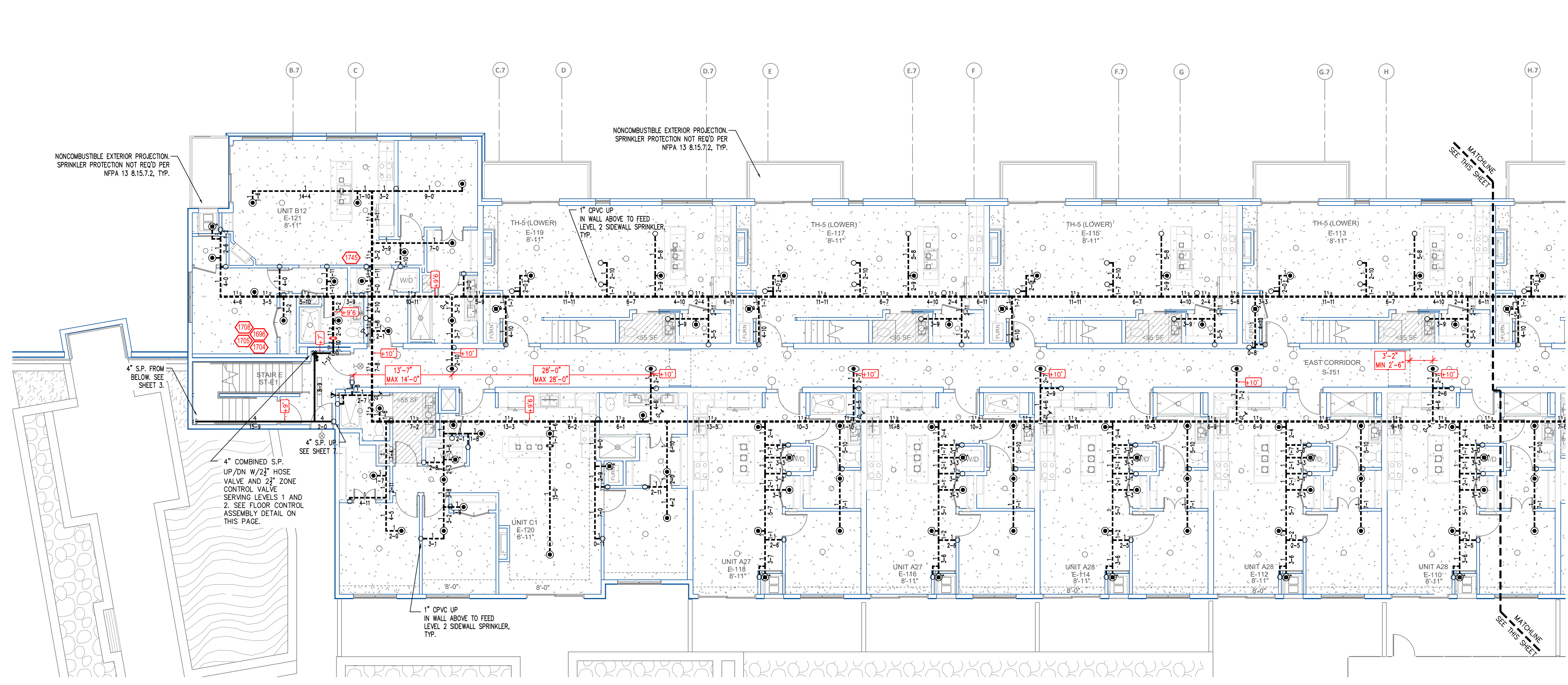
Approval By: **STATE FIRE MARSHAL DIV.**

SHEET NO: **3 of 7**

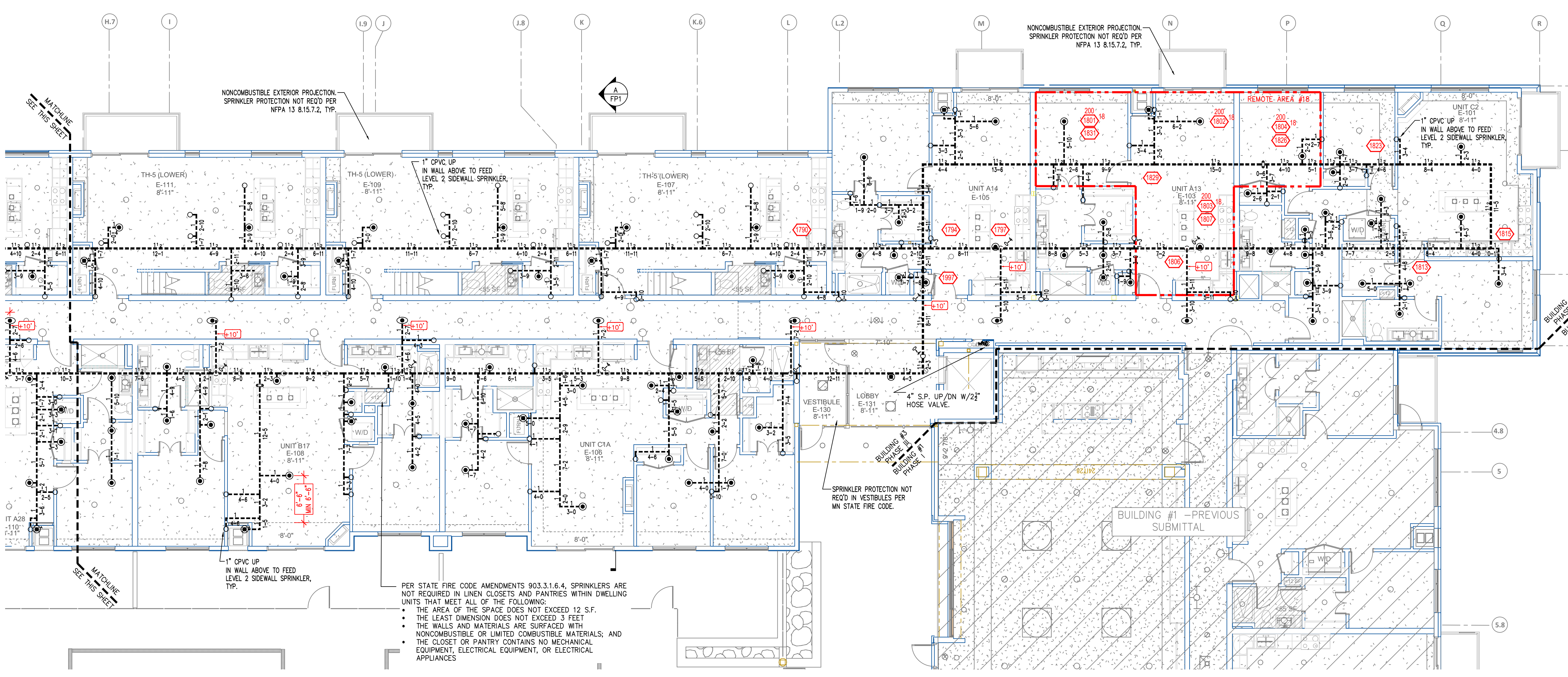
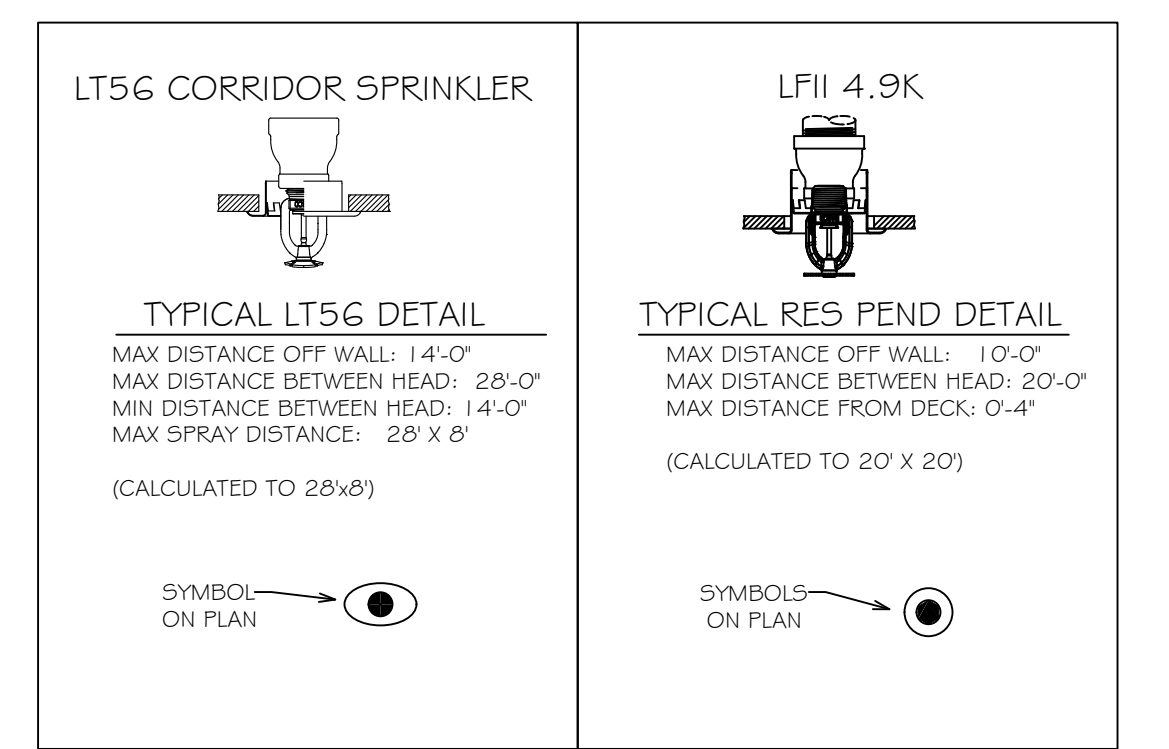
ASPIRE AT CITY PLACE
BUILDING #3 (EAST & PARKING)
9000 CITY PLACE BLVD
WOODBURY, MN 55125

General Notes

1. All piping shall be installed in accordance with NFPA 13 and Minnesota State Fire Marshal.
2. All piping shall be installed in accordance with NFPA 13 and Minnesota State Fire Marshal.
3. Minimum pipe size shall be 1" nominal pipe.
4. All welding shall be performed in accordance with NFPA 13 and Minnesota State Fire Marshal.
5. No installation or fabrication to begin without approved shop drawings.
6. No installation or fabrication to begin without approved shop drawings.
7. All dimensions shown are center to center.
8. All dimensions shown are center to center.
9. Provide one space head cabinet w/ 6 hds. & one hd wrench.
10. Hangers are to be U.L. Listed and P.M. Approved.
11. Provide adequate hangers to prevent wet system piping from freezing.
12. Owner's responsibility to provide adequate heating to prevent wet system piping from freezing.



SPRINKLER SPACING DETAILS



Design Area #18 HAZARD: RES
 Zone: 6 System Type: WET
 Location: E-103

Flowing Outlets: 4
 Density: 0.10 Remote Area: 4 SPK
 Flow 182.2 gpm @ 48.8 psi
 Calculation Safety: 19 psi
 Includes 100 gpm Hose allowance

SPRINKLER HEAD LEGEND

SYM	UNIT	POSITION	FINISH	TEMP	K	NPT	SN	MPG	MODEL#	ES/SCHECHON	HEAD BOX (2 min)
◀	160	SIDEWALL	WHITE	155	4.40	1/2"	TY2334	TYCO	LFII	SEMI-RECESSED	2
◀	35	SIDEWALL	WHITE	200	5.60	1/2"	TY3331	TYCO	TY-FRB	SEMI-RECESSED	2
⊙	366	PENDENT	WHITE	155	4.90	1/2"	TY2234	TYCO	LFII	SEMI-RECESSED	2
◀	12	SIDEWALL	WHITE	155	5.60	1/2"	RA564	RELIABLE	DNSE	SEMI-RECESSED	2
◀	19	PENDENT	WHITE	155	5.60	1/2"	TY323	TYCO	TY-FRB	SEMI-RECESSED	2
◀	1	SIDEWALL	WHITE	155	5.60	1/2"	TY3331	TYCO	TY-FRB	SEMI-RECESSED	2
◀	3	SIDEWALL	WHITE	155	8.00	3/4"	TY4332	TYCO	TY-FRB	SEMI-RECESSED	2
⊙	65	PENDENT	WHITE	200	5.60	1/2"	TY323	TYCO	TY-FRB	SEMI-RECESSED	2
⊙	26	PENDENT	WHITE	155	5.60	1/2"	RA5814	RELIABLE	LT56	SEMI-RECESSED	2
◀	15	SIDEWALL	WHITE	155	4.90	1/2"	WK486	WIKING	FREEDOM	SEMI-RECESSED	2
◀	3	SIDEWALL	WHITE	155	5.80	1/2"	WK460	WIKING	FREEDOM	SEMI-RECESSED	2
⊙	4	PENDENT	WHITE	155	11.20	3/4"	TY5237	TYCO	EC-11	SEMI-RECESSED	2
◊	31	UPRIGHT	BRASS	200	5.60	1/2"	TY313	TYCO	TY-FRB	N/A	2
◊	5	UPRIGHT	BRASS	200	14.00	3/4"	TY6137	TYCO	EC-14	N/A	2
⊙	582	SPRIGD UPRIGHT	BRASS	200	14.00	3/4"	TY6137	TYCO	EC-14	N/A	2
◊	1	SPRIGD UPRIGHT	BRASS	200	5.60	1/2"	TY313	TYCO	TY-FRB	N/A	2
◊	1	UPRIGHT	BRASS	200	5.60	1/2"	TY313	TYCO	TY-FRB	N/A	2
⊙	11	UPRIGHT	BRASS	200	5.60	1/2"	TY313	TYCO	TY-FRB	N/A	2
1320 TOTAL HEADS											

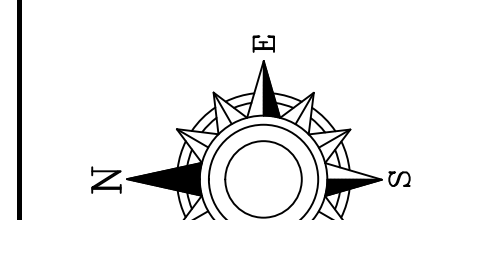
PIPE LEGEND

- BLACK STEEL SPRINKLER PIPING
- - - CPVC BLAZEMASTER SPRINKLER PIPING

LEVEL 1 BUILDING #3
 SCALE = 1/8" = 1'-0"

PER STATE FIRE CODE AMENDMENTS 903.3.1.6.4, SPRINKLERS ARE NOT REQUIRED IN LINEN CLOSETS AND PANTRIES WITHIN DWELLING UNITS THAT MEET ALL OF THE FOLLOWING:

- THE AREA OF THE SPACE DOES NOT EXCEED 12 S.F.
- THE LEAST DIMENSION DOES NOT EXCEED 3 FEET
- THE WALLS AND MATERIALS ARE SURFACED WITH NONCOMBUSTIBLE OR LIMITED COMBUSTIBLE MATERIALS; AND
- THE CLOSET OR PANTRY CONTAINS NO MECHANICAL EQUIPMENT, ELECTRICAL EQUIPMENT, OR ELECTRICAL APPLIANCES



ASPIRE AT CITY PLACE
 BUILDING #3 (EAST & PARKING)
 9000 CITY PLACE BLVD
 WOODBURY, MN 55125

Drawing Title: **FIRE PROTECTION PLAN**

Contract No: **C20-1**

Drawing Date: **08/26/2020**

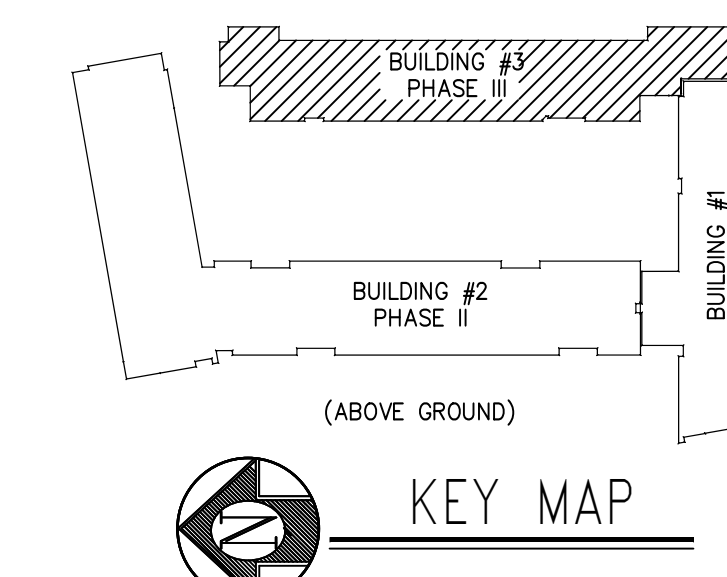
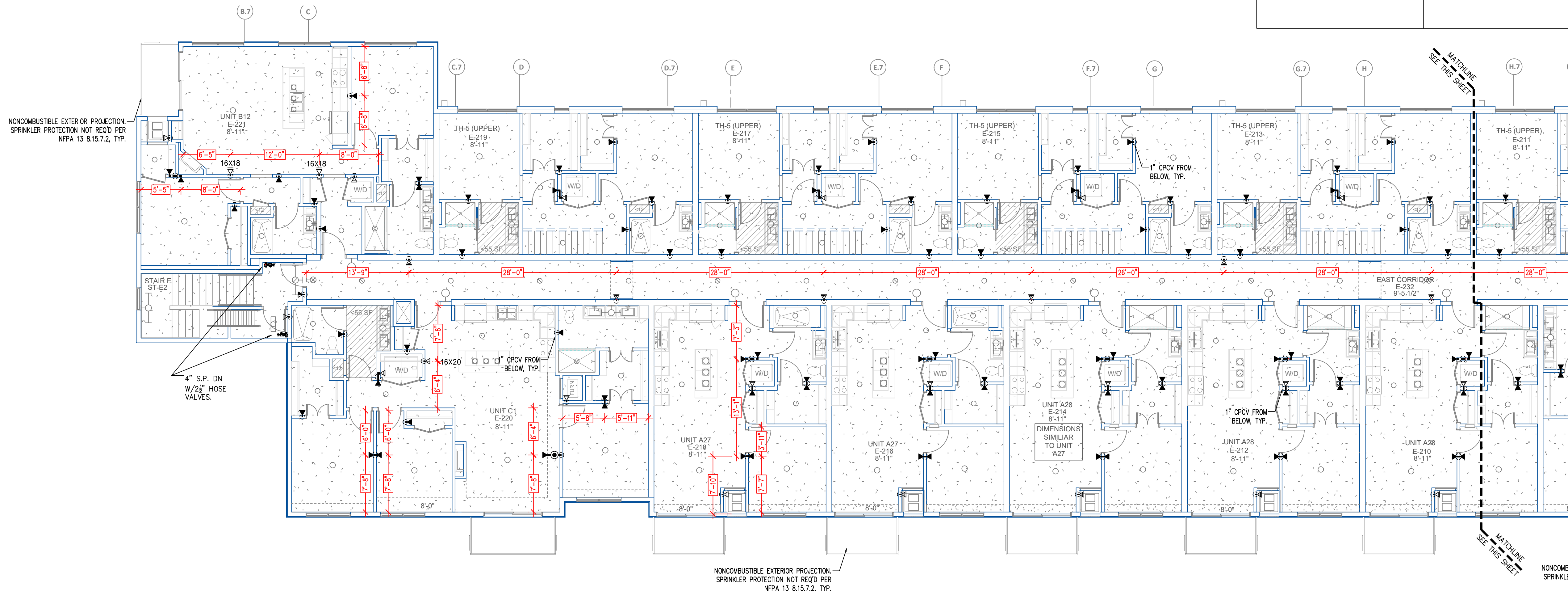
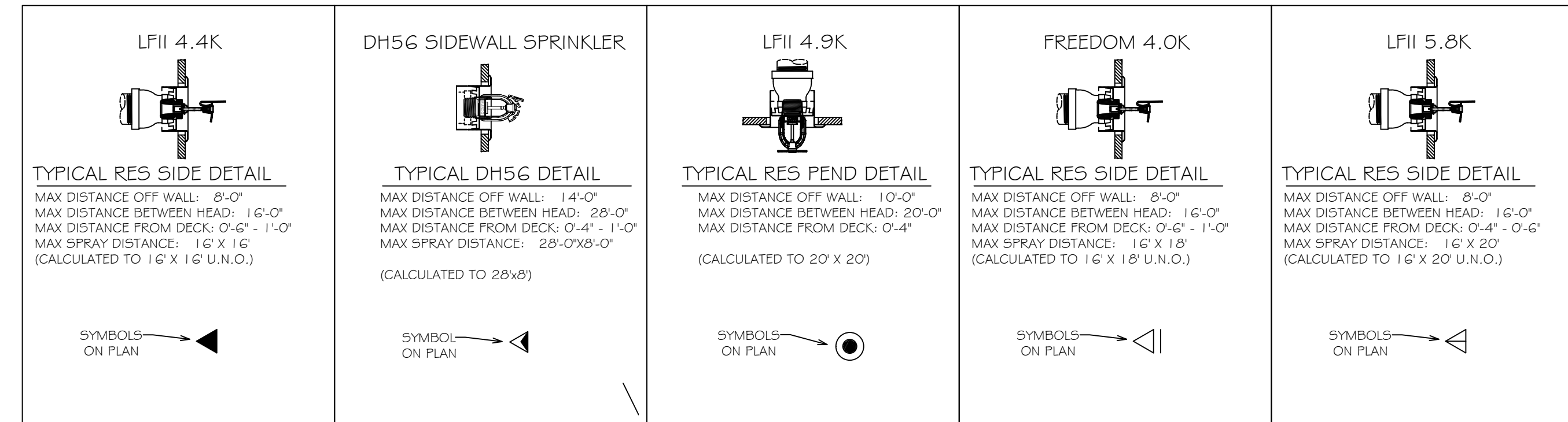
Scale: **1/8" = 1'-0"**

Drawn By: _____

Approval By: **STATE FIRE MARSHAL DIV.**

SHEET NO: **6 of 7**

SPRINKLER SPACING DETAILS



CALC PLACARD

Design Area #16 HAZARD: RES
 Zone: 6 System Type: WET
 Location: E-120

Flowing Outlets: 4
 Density: 0.10 Remote Area: 4 SPK
 Flow 185.1 gpm @ 60.8 psi
 Calculation Safety: 7 psi
 Includes 100 gpm Hose allowance

NOTE:
 4 SPRINKLERS CALCULATED PER NFPA 13 SEC. 11.3.1.1 DWELLING UNIT CALC.

CALC PLACARD

Design Area #17 HAZARD: LIGHT
 Zone: 6 System Type: WET
 Location: CORRIDOR E-232

Flowing Outlets: 4
 Density: 0.10 Remote Area: 75 LF
 Flow 169.7 gpm @ 48.3 psi
 Calculation Safety: 19.6 psi
 Includes 100 gpm Hose allowance

NOTE:
 ALL SPRINKLERS WITHIN 75 LF CALCULATED.

PER STATE FIRE CODE AMENDMENTS 903.3.1.6.4, SPRINKLERS ARE NOT REQUIRED IN LINEN CLOSETS AND PANTRIES WITHIN DWELLING UNITS THAT MEET ALL OF THE FOLLOWING:

- THE AREA OF THE SPACE DOES NOT EXCEED 12 S.F.
- THE LEAST DIMENSION DOES NOT EXCEED 3 FEET
- THE WALLS AND MATERIALS ARE SURFACED WITH NONCOMBUSTIBLE OR LIMITED COMBUSTIBLE MATERIALS; AND
- THE CLOSET OR PANTRY CONTAINS NO MECHANICAL EQUIPMENT, ELECTRICAL EQUIPMENT, OR ELECTRICAL APPLIANCES

SPRINKLER HEAD LEGEND

SYM	CNT	POSITION	FINISH	TEMP	K	NPT	ISN	MFG.	MODEL#	ESCU/CHRON	HEAD BOX (2 min)
◀	160	SIDEWALL	WHITE	155	4.40	1/2"	TY2334	TYCO	LFII	SEMI-RECESSED	2
◀	125	SIDEWALL	WHITE	200	5.60	1/2"	TY3331	TYCO	TY-FRB	SEMI-RECESSED	2
◀	366	PENDENT	WHITE	155	4.90	1/2"	TY2234	TYCO	LFII	SEMI-RECESSED	2
◀	12	SIDEWALL	WHITE	155	5.60	1/2"	RA1564	RELIABLE	DHS6	SEMI-RECESSED	2
◀	19	PENDENT	WHITE	155	5.60	1/2"	TY323	TYCO	TY-FRB	SEMI-RECESSED	2
◀	1	SIDEWALL	WHITE	155	5.60	1/2"	TY3331	TYCO	TY-FRB	SEMI-RECESSED	2
◀	1	SIDEWALL	WHITE	155	8.00	3/4"	TY4332	TYCO	TY-FRB	SEMI-RECESSED	2
◀	15	PENDENT	WHITE	200	5.60	1/2"	TY323	TYCO	TY-FRB	SEMI-RECESSED	2
◀	26	PENDENT	WHITE	155	5.60	1/2"	RA5814	RELIABLE	LT56	SEMI-RECESSED	2
◀	3	SIDEWALL	WHITE	155	4.00	1/2"	VK486	WIKING	FREEDOM	SEMI-RECESSED	2
◀	3	SIDEWALL	WHITE	155	5.80	1/2"	VK460	WIKING	FREEDOM	SEMI-RECESSED	2
◀	4	PENDENT	WHITE	155	11.20	3/4"	TY2337	TYCO	EC-11	SEMI-RECESSED	2
◌	11	UPRIGHT	BRASS	200	3.60	1/2"	TY313	TYCO	TY-FRB	N/A	2
◌	5	UPRIGHT	BRASS	200	14.00	3/4"	TY6137	TYCO	EC-14	N/A	2
◌	582	SPRIG'D UPRIGHT	BRASS	200	14.00	3/4"	TY6137	TYCO	EC-14	N/A	2
◌	1	SPRIG'D UPRIGHT	BRASS	200	5.60	1/2"	TY313	TYCO	TY-FRB	N/A	2
◌	1	UPRIGHT	BRASS	200	5.60	1/2"	TY313	TYCO	TY-FRB	N/A	2

1320 TOTAL HEADS

PIPE LEGEND

—	BLACK STEEL SPRINKLER PIPING
- - -	CPVC BLAZEMASTER SPRINKLER PIPING

LEVEL 2 BUILDING #3
 SCALE= 1/8" = 1'-0"

APPROVAL STAMPS

General Notes
 1. All work shall be in accordance with the State Fire Marshal.
 2. All piping shall be installed in accordance with the State Fire Marshal.
 3. Minimum pipe size shall be 1" nominal pipe.
 4. All piping shall be installed in accordance with the State Fire Marshal.
 5. No installation or fabrication to begin without approved shop drawings.
 6. All piping shall be installed in accordance with the State Fire Marshal.
 7. All Dimensions Shown are Center to Center.
 8. Provide one spare head cabinet w/ 6 bids & one bid wrench.
 9. Hangers are to be U.L. Listed and P.M. Approved.
 10. Provide adequate hasting to prevent wet system piping from freezing.
 11. Provide adequate hasting to prevent wet system piping from freezing.
 12. Owner's responsibility to provide adequate hasting to prevent wet system piping from freezing.

DRIVEN
 FIRE CONSULTANTS
 910 N. SYCAMORE AVENUE, STOUX FALLS, SD 57110 PHONE: (605)-444-9290

ASPIRE AT CITY PLACE
 BUILDING #3 (EAST & PARKING)
 9000 CITY PLACE BLVD
 WOODBURY, MN 55125

Contract No: **C20-1**
 Drawing Date: 08/26/2020
 Scale: 1/8" = 1'-0"
 Drawn By: _____
 Approval By: STATE FIRE MARSHAL DIV.
 SHEET NO: **7 of 7**