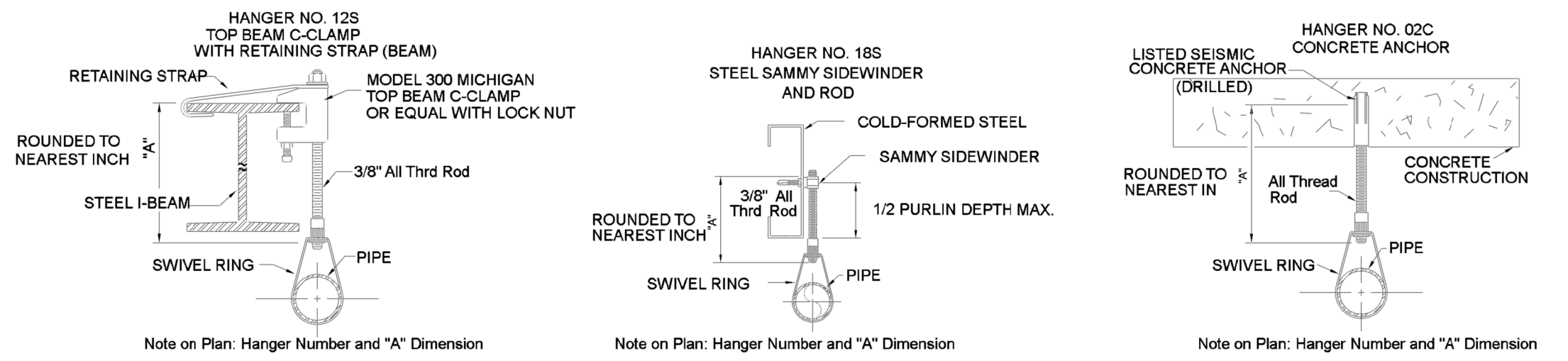


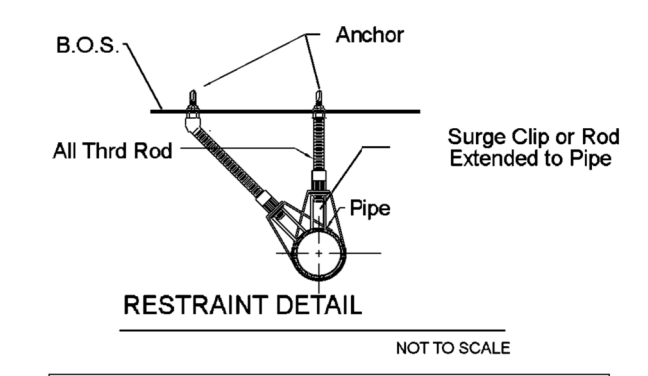
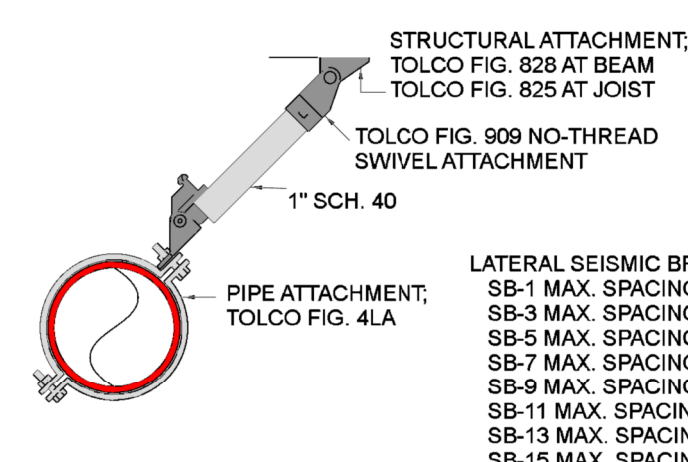
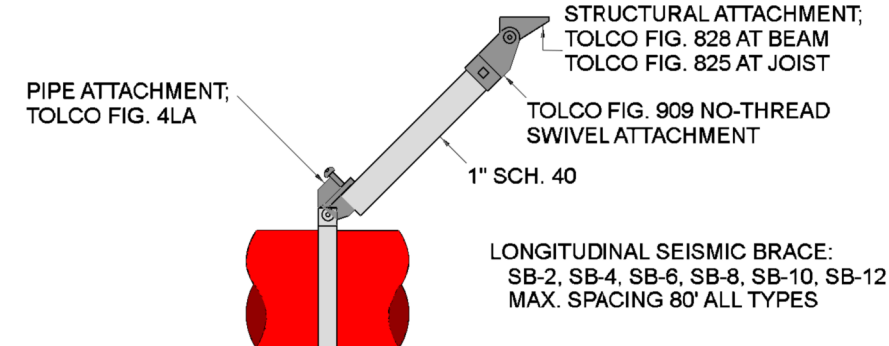
	MAXIMUM DISTANCE BETWEEN HANGERS (FT.-IN.)									
	3/4"	1"	1 1/4"	1 1/2"	2"	2 1/2"	3"	4"	6"	8"
STEEL PIPE EXCEPT THREADED LIGHTWALL	NA	12-0	12-0	15-0	15-0	15-0	15-0	15-0	15-0	15-0
THREADED LIGHTWALL STEEL PIPE	NA	12-0	12-0	12-0	12-0	NA	NA	NA	NA	NA
COPPER TUBE	8-0	8-0	10-0	10-0	12-0	12-0	12-0	NA	NA	NA
BLAZEMASTER CPVC	5-6	6-0	6-6	7-0	8-0	9-0	10-0	NA	NA	NA



HANGER DETAILS



SEE BRACING REPORTS FOR
SPECIFIC INFORMATION FOR
EACH BRACE TYPE.



SEISMIC DETAILS

NOT TO SCALE

GENERAL INFORMATION

- INTERNATIONAL BUILDING CODE (2018) & INTERNATIONAL FIRE CODE (2018)
- OCCUPANCY GROUPS A1 - ASSEMBLY AND B - BUSINESS
- TYPE OF CONSTRUCTION: IA (NON-COMBUSTIBLE CONSTRUCTION)
- SPRINKLERED AREAS (APPROXIMATE - SEE ARCHITECTURAL PLANS FOR ACTUAL)
 - FIRST FLOOR = 53,236 S.F.
 - ORCHESTRA LEVEL = 1102 S.F.
 - CONTROL LEVEL = 3002 S.F.
 - MEZZANINE = 3488 S.F.
 - 2ND FLOOR = 4350 S.F.
- INSTALLATION STANDARDS:
 - SPRINKLER SYSTEM DESIGNED AND INSTALLED PER NFPA-13 (2016). FIRE PUMP ASSEMBLY DESIGNED AND INSTALLED PER NFPA-20 (2016).
- SPRINKLER PIPE TYPES:
 - WET:
 - 2.1) DRAIN PIPING AND ITC PIPE TO BE 1" VIC IGS GROOVED FITTINGS
 - 2.2) 1" ARM-OVERS AND OUTLETS TO BE VIC IGS GROOVED FITTINGS
 - 2.3) 1-1/2" THROUGH 2" BRANCH LINES TO BE BLK SCHEDULE 40 PIPING WITH SHORT RADIUS GROOVED FITTINGS
 - 2.4) 2 1/2" THROUGH 6" MAINS AND RISER TO BE BLK SCHEDULE 10 PIPING WITH SHORT RADIUS GROOVED FITTINGS
- DESIGN CRITERIA:
 - 3.1) LIGHT HAZARD AREAS DESIGNED TO DELIVER 0.10 GPM/S.F. OVER THE MOST DEMANDING 1500 S.F.
 - 3.2) ORDINARY HAZARD GROUP 1 AREAS DESIGNED TO DELIVER 0.15 GPM/S.F. OVER THE MOST DEMANDING 1500 S.F.
 - 3.3) ORDINARY HAZARD GROUP 2 AREAS DESIGNED TO DELIVER 0.20 GPM/S.F. OVER THE MOST DEMANDING 1500 S.F.
 - 3.4) REMOTE AREA REDUCTIONS HAVE BEEN TAKEN WHERE APPLICABLE PER NFPA 13 SEC. 11.2.3.2.3
- NOTES:
 - 4.1) ALL MATERIAL TO BE NEW AND MEET U.L. STANDARDS
 - 4.2) HANGERS TO BE INSTALLED IN ACCORDANCE WITH NFPA 13 (2016) - SEE PLAN FOR HANGING REQUIREMENTS
- SYMBOLS USED ON DRAWINGS:
 - PIPE ELEVATION A.F.F.
 - PIPE ELEVATION BELOW DECK
 - ROOM HAZARD CLASSIFICATION (ALL ROOMS ARE CONSIDERED LIGHT HAZARD UNLESS NOTED)
 - HYDRAULIC CALCULATION JUNCTION POINT
 - CEILING HEIGHT
- SCOPE OF WORK:
 - 6.1) INSTALL A NEW FIRE PUMP ASSEMBLY PER NFPA 20 (2016) INCLUDING A JOCKEY PUMP AND ASSOCIATED CONTROLLERS. ALL WIRING BY OTHERS.
 - 6.2) INSTALL 2 WET FIRE SPRINKLER SYSTEM ZONES TO COVER ALL AREAS OF THE BUILDING PER NFPA 13 (2016). ZONE "A" COVERS APPROXIMATELY 25,550 SF. ZONE "B" COVERS APPROXIMATELY 23,680 SF.
 - 6.3) INSTALL SMALL HOSE CONNECTIONS AT THE STAGE PER IFG (2019) 905.3.4. HOSE CONNECTIONS DESIGNED PER NFPA 13 (2016) 8.11.5.1 AND 11.1.5.4.

SEISMIC NOTES

- LAT 1 SEE LATERAL SWAY BRACE DETAIL
- LONG 1 SEE LONGITUDINAL SWAY BRACE DETAIL
- BRANCHLINE RESTRAINT - SEE DETAIL
- INDICATES BRACE NUMBER. SEE CORRESPONDING BRACE NUMBER IN SEISMIC CALCULATIONS
- INDICATES 4-WAY BRACE

SWAY BRACES SHALL BE INSTALLED PER NFPA 13. SEE PLAN FOR LOCATION.

FOR BRACES USE 1" SCH 40 PIPING ATTACHED TO BUILDING STRUCTURE AT SPECIFIED ANGLE

4-WAY BRACES SHALL BE INSTALLED AT ALL VERTICAL VALVE RISERS. SEE RISER DETAIL.

END OF LINE RESTRAINTS SHALL BE INSTALLED NO MORE THAN 49' O.C. ON LONG LINES (AS SHOWN)

END OF LINE RESTRAINTS SHALL BE INSTALLED AT END OF ALL LINES

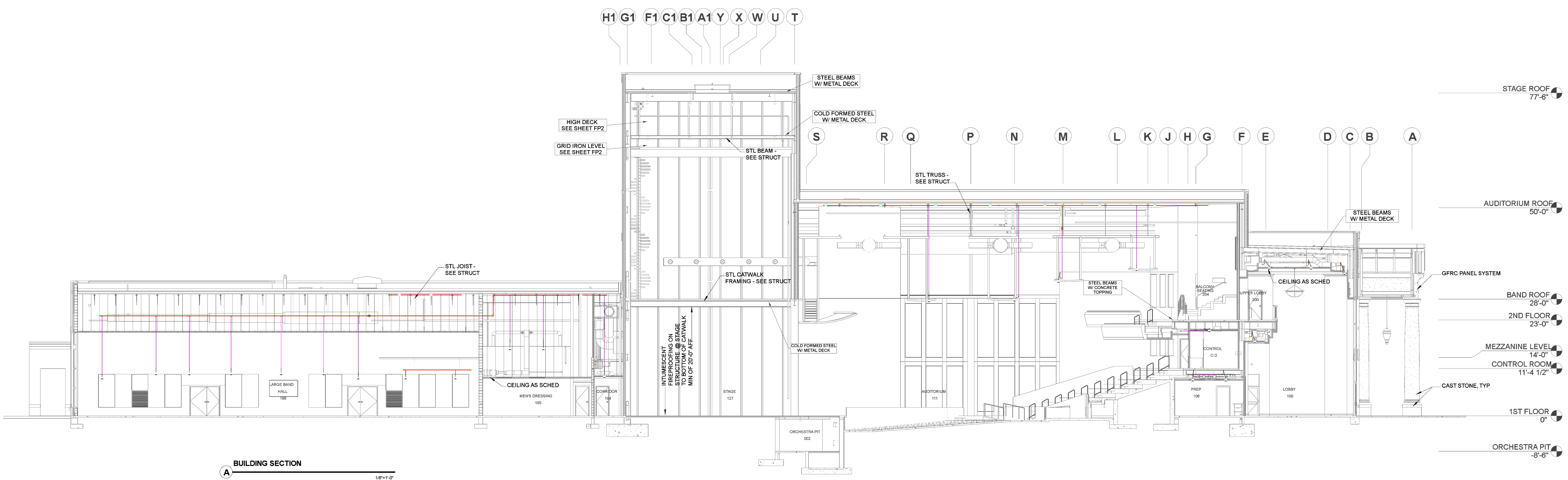
INSTALL SURGE CLIPS AT ALL RESTRAINT LOCATIONS OR RUN ROD DOWN TO TOUCH PIPE

REFER TO SEISMIC BRACE CALCULATIONS FOR BRACING DETAILS AND MATERIALS.

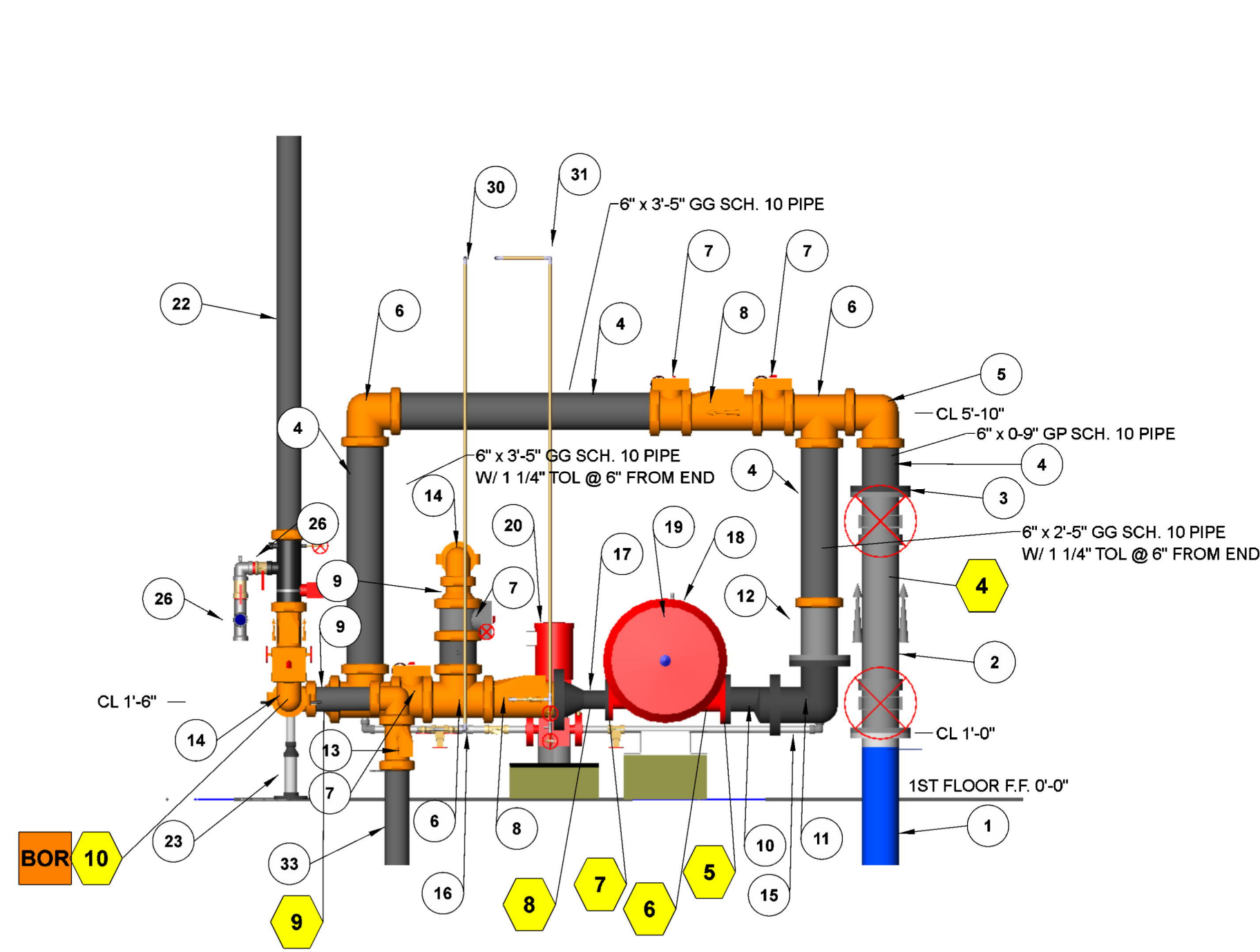
INSTALL BEAM CLAMP RETAINING STRAPS AT ALL HANGERS UTILIZING TOP BEAM CLAMPS.

FLEXIBLE COUPLINGS SHALL BE INSTALLED AT TOP OF ALL VALVE RISERS AND ALL RISERS >36" AND <84".

FLEXIBLE COUPLINGS SHALL BE INSTALLED AT TOP AND BOTTOM OF ALL RISERS >84".

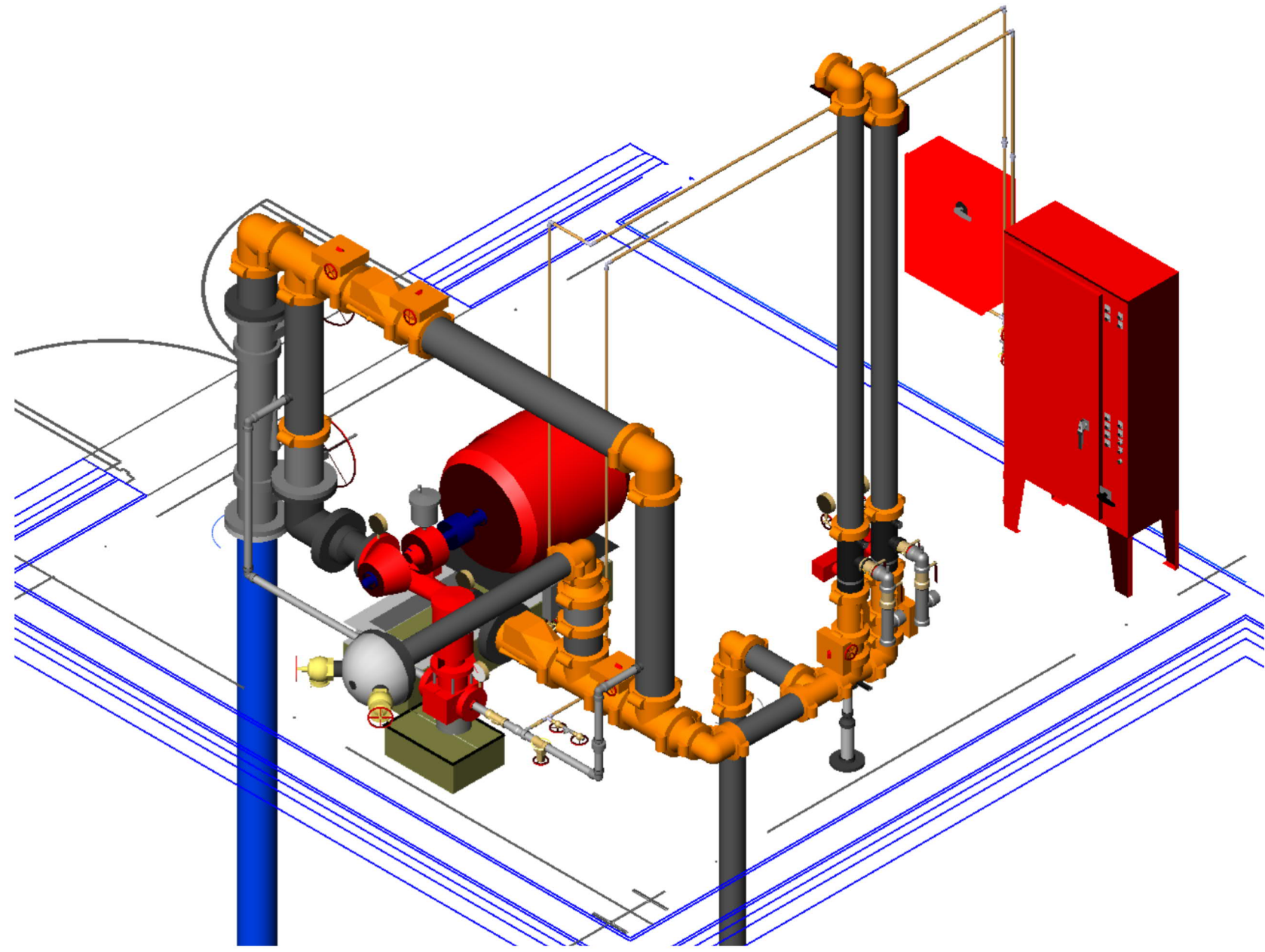


- PUMP ROOM NOTES:**
1. THE BUTTERFLY VALVE FOR THE TEST CONNECTION TO BE MONITORED "NORMALLY CLOSED".
 2. PROVIDE AND INSTALL JOCKEY PUMP AND FIRE PUMP SENSING LINES PER NFPA 20.
 3. SEE PUMP SUBMITTAL FOR ADDITIONAL INFORMATION ON THE FIRE PUMP AND JOCKEY PUMP.
 4. INSTALL AND MOUNT FIRE AND JOCKEY PUMPS. HOUSEKEEPING PADS BY OTHERS.
 5. PROVIDE AND INSTALL HANGERS AND RISER CLAMPS AS REQUIRED.
 6. PROVIDE TAMPER SWITCHES ON JOCKEY PUMP LINE CONTROL VALVES.
 7. ALL WIRING BY OTHERS.
 8. FIRE PUMP ROOM DRAINS PROVIDED BY OTHERS.
 9. TIE ALL MAIN DRAINS TOGETHER AND ROUTE BEST WAY TO EXTERIOR WALL.



FIRE PUMP DETAILS

SCALE: 1/2"=1'-0"



FIRE PUMP ROOM ISOMETRIC VIEW

SCALE: N.T.S.

Fire Pump Assembly			
KEY NOTE	SIZE	DESCRIPTION	QUANTITY
1	6"	NEW C300 UND-BY OTHERS	-
2	6"	AMES 2000SS FF OS&Y BACKFLOW PREVENTOR	1
3	6"	WELDED SLIP ON FLANGE	1
4	6"	GG SCH. 10 BLACK PIPE	-
5	6"	GG 90 ELL	2
6	6"	GG TEE	2
7	6"	GG BUTTERFLY VALVE W/ TAMPER	4
8	6"	GG CHECK VALVE	2
9	6"	6 X 4 GG BELL REDUCER	2
10	6"	6 X 4 FF ECCENTRIC REDUCER	1
11	6"	FF OS&Y VALVE W/ TAMPER SWITCH	1
12	6"	FF OS&Y VALVE W/ TAMPER SWITCH	1
13	4"	GG CHECK VALVE	1
14	4"	GG 90 ELL	2
15	1.25"	JOCKEY PUMP SUCTION LINE	-
16	1.25"	JOCKEY PUMP DISCHARGE LINE	-
17	6"	3" X 6" FF CONCENTRIC INCREASER	1
18	-	NEW 500 GPM 80 PSI ELECTRIC FIRE PUMP	1
19	-	PUMP RELIEF VALVE	1
20	-	NEW JOCKEY PUMP	1
21	4"	GG TEE	1
22	4"	GG SCH 10 BLACK PIPE	-

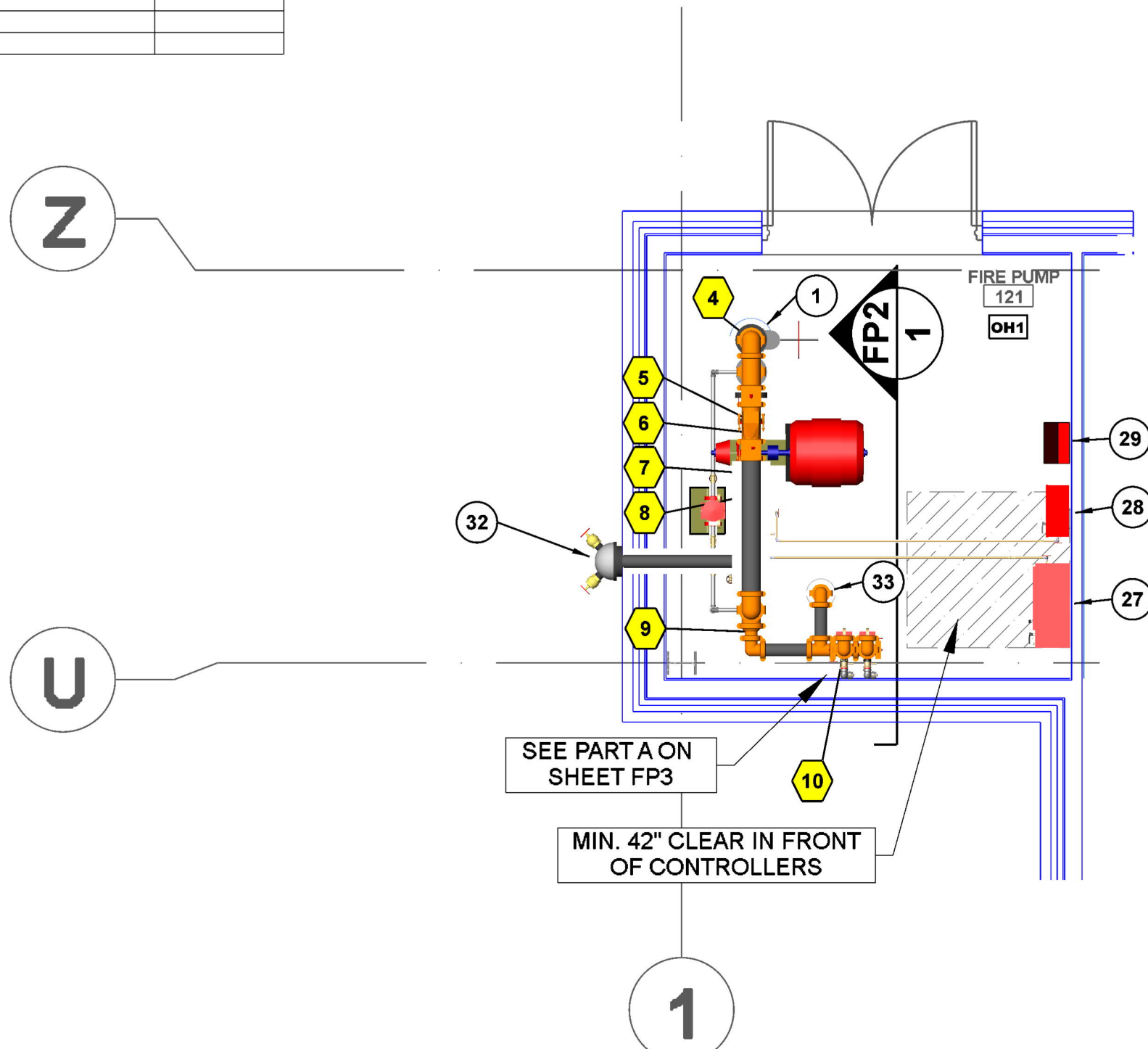
KEY NOTE	SIZE	DESCRIPTION	QUANTITY
23	4"	4" X 2" PIPE STAND	1
24	3"	RISER	1
25	4"	RISER	1
26	4"	TYPICAL WET SYSTEM RISER CONTROL- GG BUTTERFLY VALVE W/ TAMPER, GG CHECK VALVE AND GG RISER MANIFOLD W/ MAIN DRAIN AND PRESSURE RELIEF VALVE	2
27	-	FIRE PUMP CONTROLLER	-
28	-	JOCKEY PUMP CONTROLLER	-
29	-	12 SPARE SPRINKLER CABINET	1
30	-	JOCKEY PUMP SENSING LINE	-
31	-	FIRE PUMP SENSING LINE	-
32	4"	4 X (2) 2 1/2" FIRE PUMP TEST CONNECTION WITH VALVES, CAPS AND CHAINS	1
33	4"	FROM FIRE DEPT. CONNECTION-SEE SHEET FP1	-

Hydraulic Information	
Remote Area 2	
OCCUPANCY CLASSIFICATION	ORDINARY GROUP II
DENSITY (GPM/FT ²)	0.20 FOR 1500FT ² (ACTUAL 1564FT ²)
TOTAL HOSE STREAMS	250.00
TOTAL HEADS FLOWING	13
K-FACTOR	5.6
TOTAL WATER REQUIRED	585.89
TOTAL PRESSURE REQUIRED	41.256
BASE OF RISER (GPM)	435.89
BASE OF RISER (PSI)	117.354
SAFETY MARGIN (PSI)	+13.175 (24.2%)

*FOR CALCULATIONS 50 GPM
APPLIED AT EACH STAGE CONNECTION.

Sprinkler Legend-ENTIRE PROJECT										
Symbol	Manufacturer	SIN	Model	Quantity	K-Factor	Type	Size	Response	Finish	Temperature
○	Viking	VK462	Mirage	422	5.6	Pendent	1/2"	Quick	Brass	155°F
○	Viking	VK300	Microfast	193	5.6	Upright	1/2"	Quick	Brass	200°F
○	Viking	VK354	Mirage	8	5.6	Pendent	1/2"	Quick	Brass	155°F
○	Viking	VK300	Microfast	8	5.6	Upright	1/2"	Quick	Brass	200°F
○	Victaulic	V3510	V3510	1	5.6	Sidewall	1/2"	Quick	White	155°F
Total = 632										

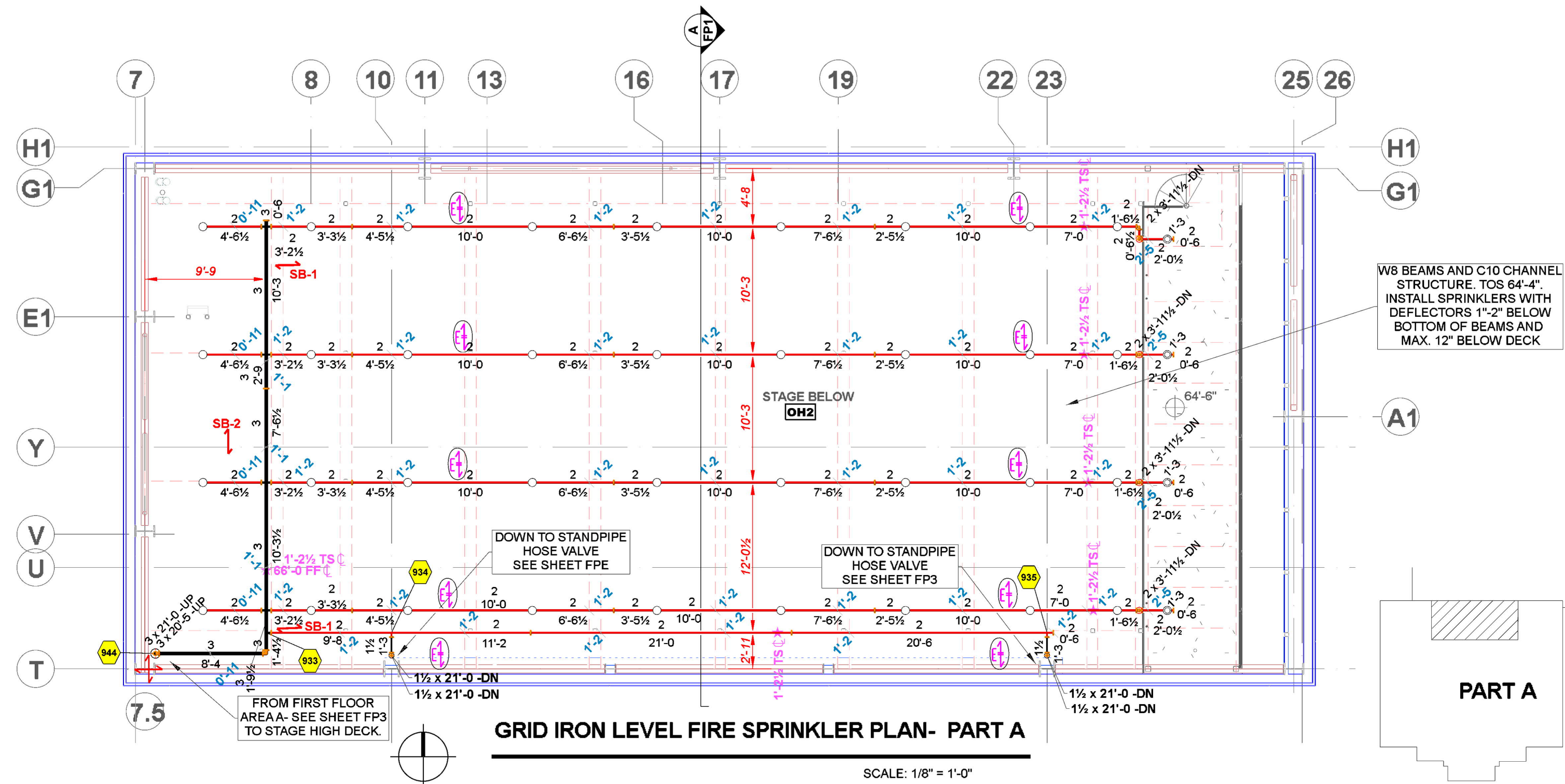
Sprinkler Legend-SHEET FP2										
Symbol	Manufacturer	SIN	Model	Quantity	K-Factor	Type	Size	Response	Finish	Temperature
○	Viking	VK300	Microfast	88	5.6	Upright	1/2"	Quick	Brass	200°F
○	Viking	VK300	Microfast	8	5.6	Upright	1/2"	Quick	Brass	200°F
○	Viking	VK462	Mirage	25	5.6	Pendent	1/2"	Quick	Brass	155°F
Total = 101										



PUMP ROOM PLAN- PART A

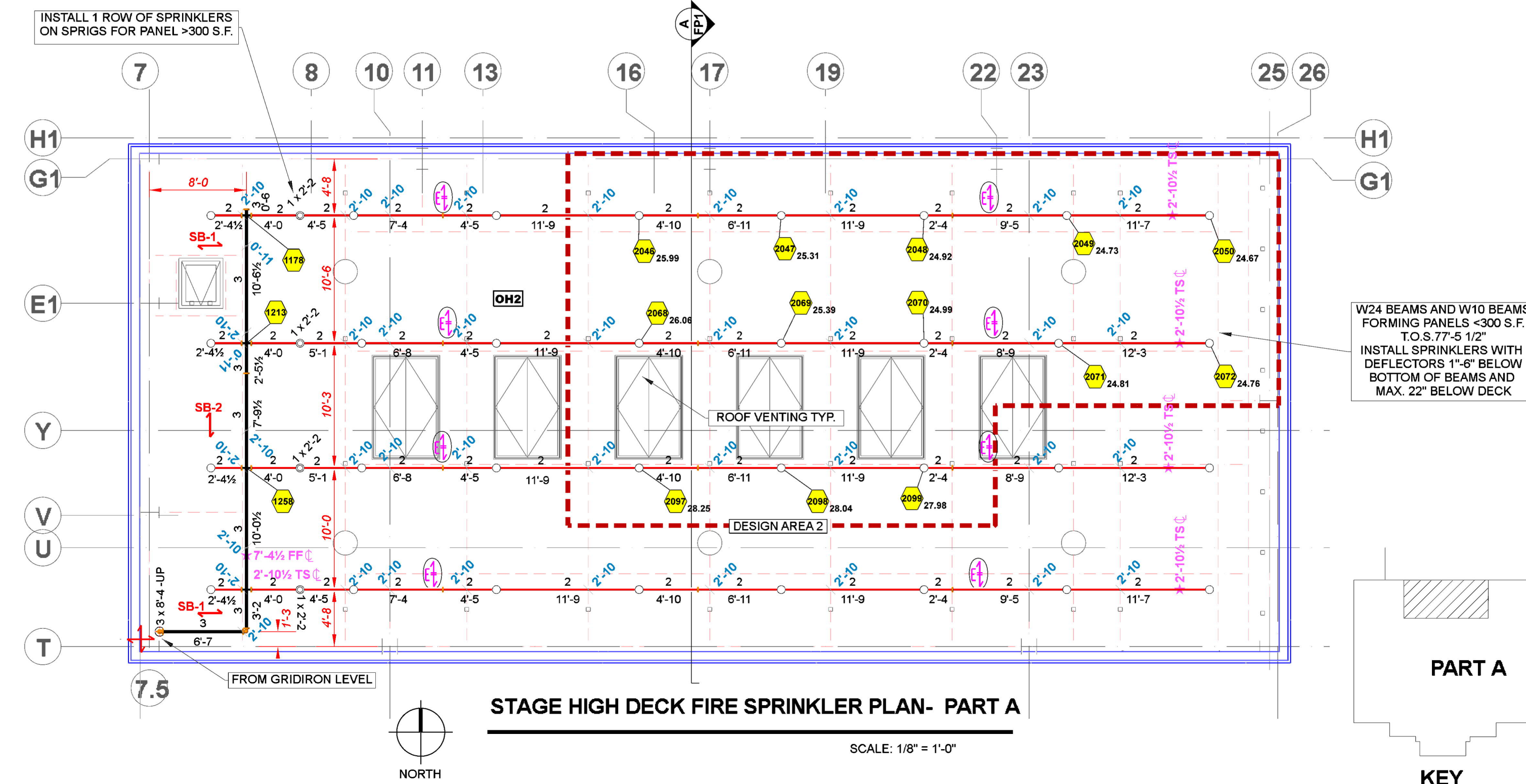
SCALE: 1/4"=1'-0"

SCALE: 1/4"=1'-0"



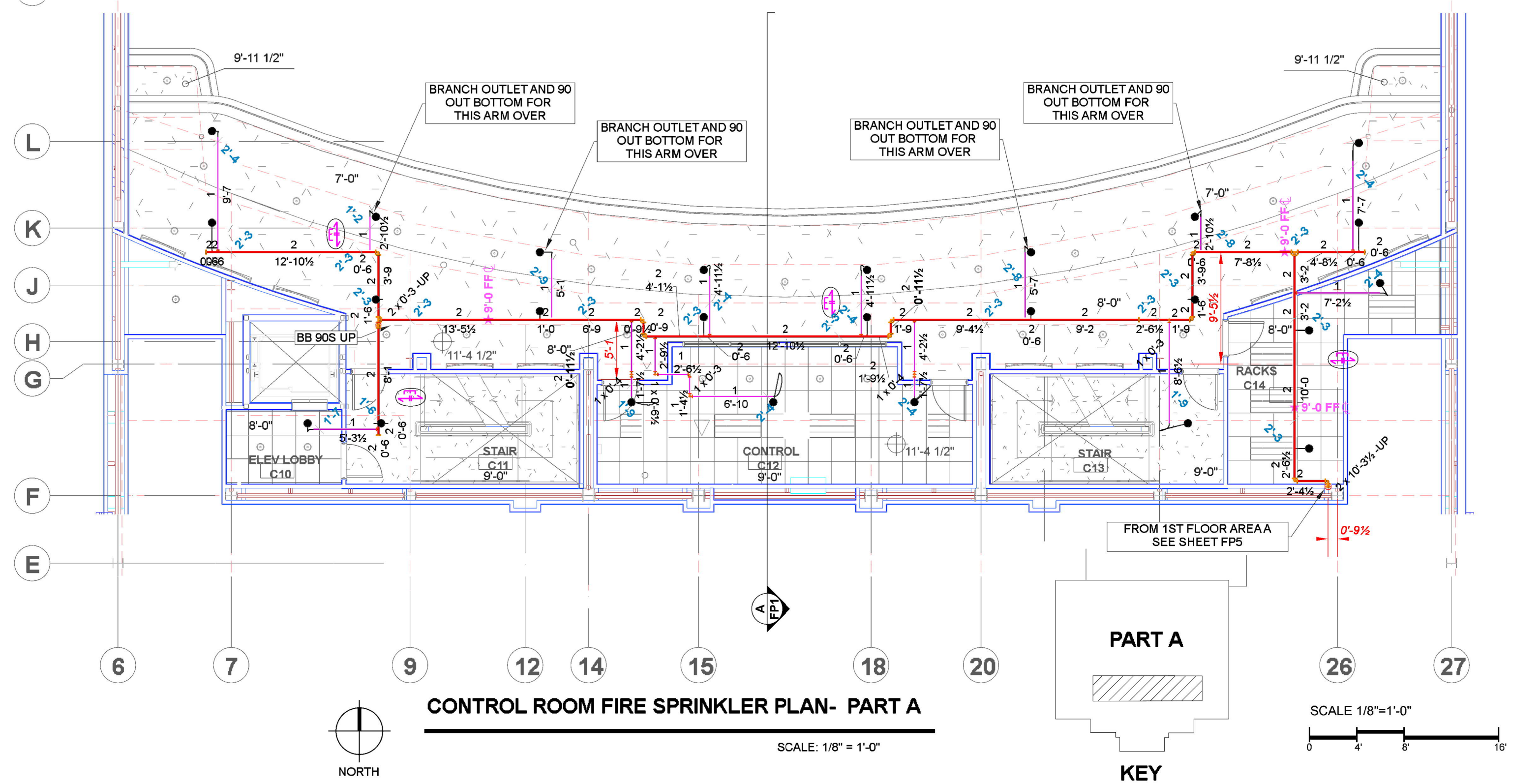
GRID IRON LEVEL FIRE SPRINKLER PLAN- PART A

SCALE: 1/8"=1'-0"



STAGE HIGH DECK FIRE SPRINKLER PLAN- PART A

SCALE: 1/8"=1'-0"



CONTROL ROOM FIRE SPRINKLER PLAN- PART A

SCALE: 1/8"=1'-0"

REVISIONS		
NO.	DATE	BY
1		
2		
3		
4		
5		

THIS DRAWING ISSUED FOR:
☐ PRE-BID SCHEMATIC
☐ BID SCHEMATIC
☒ INSTALLATION
☐ AS-BUILT

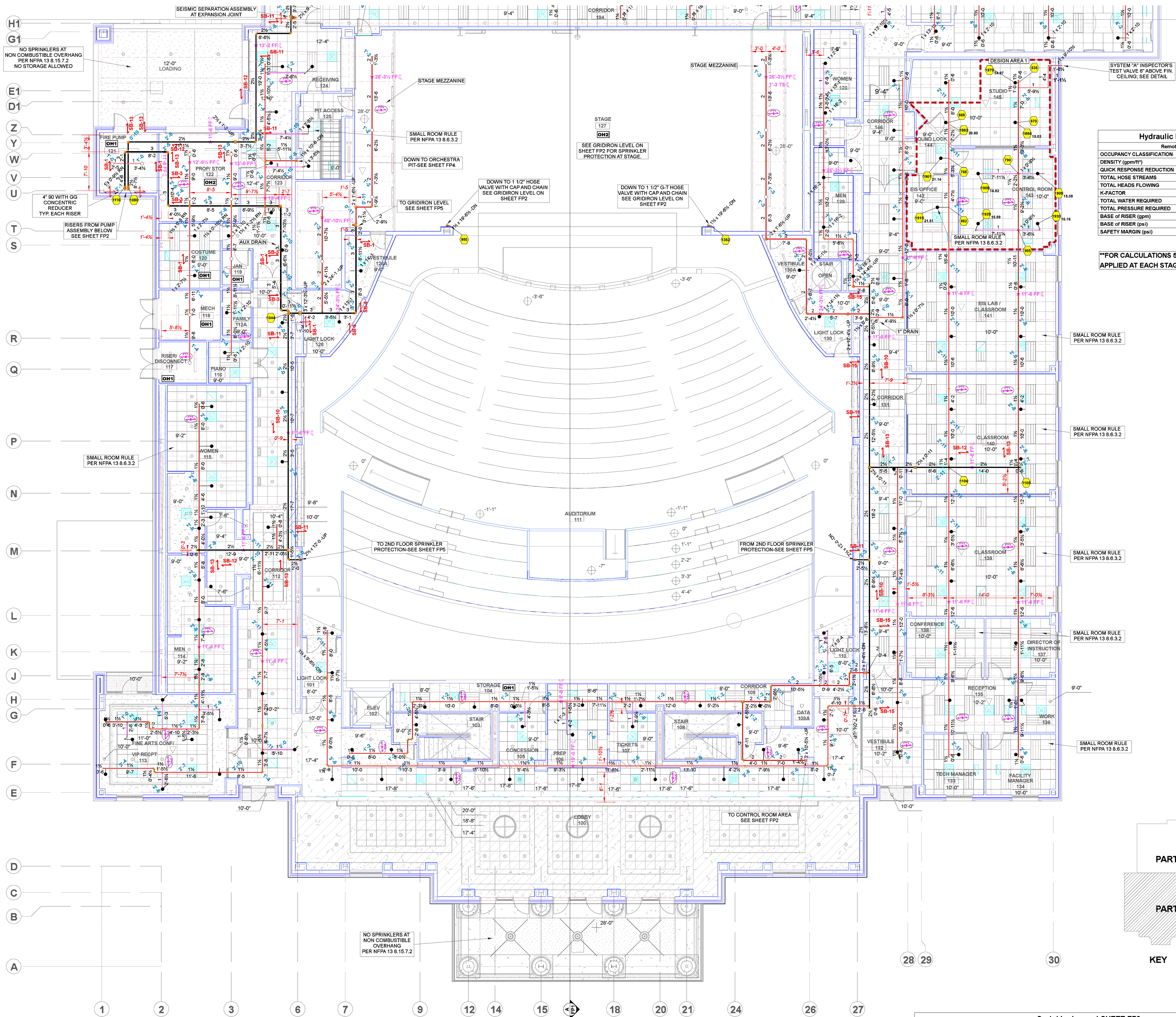
NICET LEVEL 3
RICK REDDOUT
87042

MISSISSIPPI
CERT. OF RESPONSIBILITY
FIRE SPRINKLER WORK
FIRE SUPPRESSION
11643-SC

PERFORMING ARTS CENTER
NORTHWEST MISSISSIPPI COMMUNITY COLLEGE -SENATOBIA, MS
FIRE PROTECTION PLAN

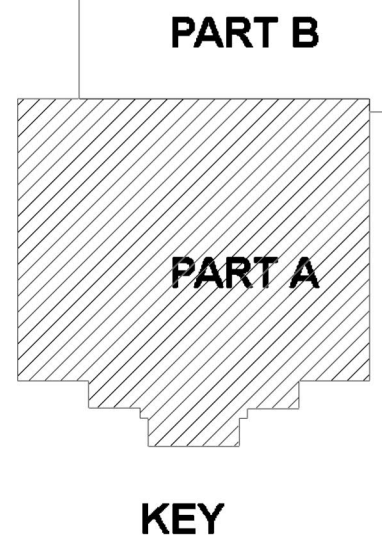
PROJECT NO.: 221030
DRAWN BY: GJO
ISSUE DATE: 11/04/21

SHEET NUMBER
FP2



Hydraulic Information	
Remote Area 1	
OCCUPANCY CLASSIFICATION	Light Hazard
DENSITY (gpm/ft ²)	0.10 for 1500ft ² (Actual 980ft ²)
QUICK RESPONSE REDUCTION	10'-0" Ceiling (40.0%) 900ft ²
TOTAL HOSE STREAMS	100.00
TOTAL HEADS FLOWING	9
K-FACTOR	5.6
TOTAL WATER REQUIRED	254.84
TOTAL PRESSURE REQUIRED	-20.231
BASE OF RISER (gpm)	254.84
BASE OF RISER (psi)	60.378
SAFETY MARGIN (psi)	+75.109 (136.9%)

**FOR CALCULATIONS 50 GPM
APPLIED AT EACH STAGE CONNECTION.



Sprinkler Legend-SHEET FP3											
Symbol	Manufacturer	SIN	Model	Quantity	K-Factor	Type	Size	Response	Temperature	Note	
●	Viking	VK422	Mirage	122	5.6	Pendent	1/2"	Quick	Brass	155°F	WHITE CONCEALED
○	Viking	VK300	Microfast	18	5.6	Upright	1/2"	Quick	Brass	200°F	
Total =				140							

REVISIONS		
NO.	DATE	BY
1		
2		
3		
4		
5		

THIS DRAWING ISSUED FOR:
☐ PRE-BID SCHEMATIC
☐ BID SCHEMATIC
☒ INSTALLATION
☐ AS-BUILT

NICET LEVEL 3
RICK REDDOUT
87042
MISSISSIPPI
CERT. OF RESPONSIBILITY
FIRE SPRINKLER WORK
FIRE SUPPRESSION
11843-SC

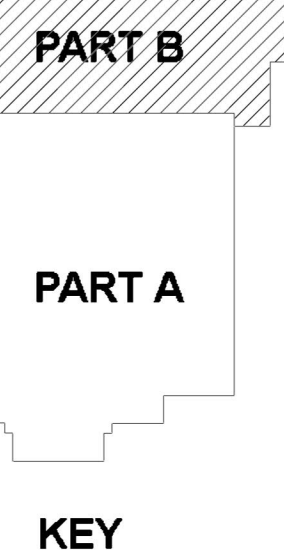
PERFORMING ARTS CENTER
NORTHWEST MISSISSIPPI COMMUNITY COLLEGE - SENATOBIA, MS
FIRE PROTECTION PLAN

PROJECT NO.: 221030
DRAWN BY: GJO
ISSUE DATE: 10/18/21

SHEET NUMBER
FP3

Hydraulic Information	
Remote Area 5	
OCCUPANCY CLASSIFICATION	Ordinary Group I
DENSITY (gpm/ft ³)	0.15 for 1500ft ³ (Actual 957ft ³)
QUICK RESPONSE REDUCTION	10'-0" Ceiling (40.0%) 900ft ³
TOTAL HOSE STREAMS	250.00
TOTAL HEADS FLOWING	11
K-FACTOR	5.6
TOTAL WATER REQUIRED	477.97
TOTAL PRESSURE REQUIRED	4.708
BASE OF RISER (gpm)	327.97
BASE OF RISER (psi)	83.910
SAFETY MARGIN (psi)	49.902 (91.4%)

****FOR CALCULATIONS 50 GPM
APPLIED AT EACH STAGE CONNECTION.**



REVISIONS		
NO.	DATE	BY
1		
2		
3		
4		
5		

☐ PRE-BID SCHEMATIC
☐ BID SCHEMATIC
☒ INSTALLATION
☐ AS-BUILT

NICET LEVEL 3
RICK REDDOUT
87042

MISSISSIPPI
CERT. OF RESPONSIBILITY
FIRE SPRINKLER WORK
FIRE SUPPRESSION
11843-SC

PERFORMING ARTS CENTER

NORTHWEST MISSISSIPPI COMMUNITY COLLEGE -SENATOBIA, MS

FIRE PROTECTION PLAN

PROJECT NO.: 221030
DRAWN BY: GJD
ISSUE DATE: 10/18/21

SHEET NUMBER

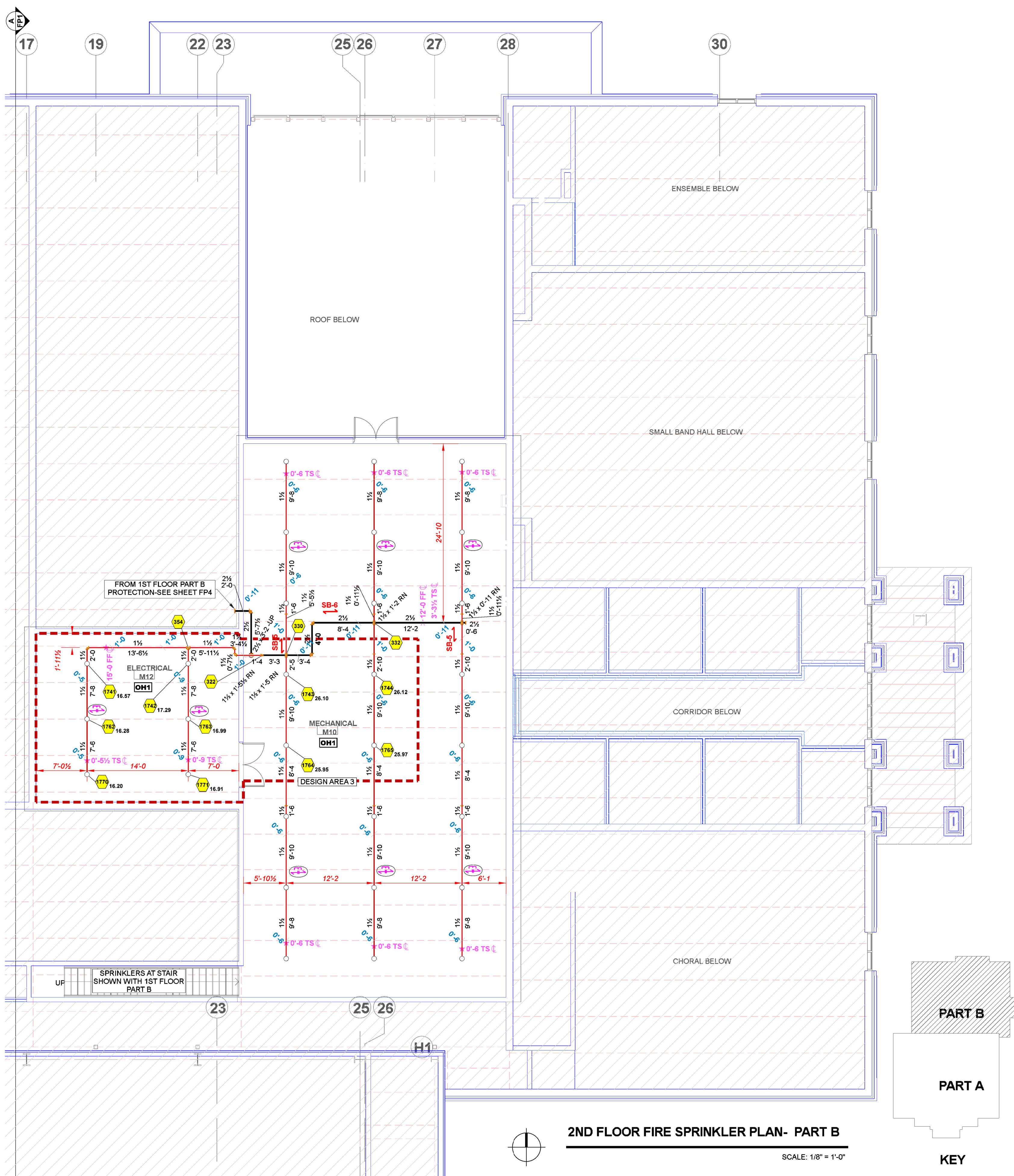
FP4



Hydraulic Information	
Remote Area 3	Ordinary Group 1
OCCUPANCY CLASSIFICATION	0.15 for 1500ft ² (Actual 1145ft ²)
DENSITY (gpm/ft ²)	15'-0" Ceiling (32.5%) 1012ft ²
QUICK RESPONSE REDUCTION	250.00
TOTAL HOSE STREAMS	10
TOTAL HEADS FLOWING	5.6
TOTAL WATER REQUIRED	447.40
K-FACTOR	-10.580
BASE OF RISER (gpm)	297.40
BASE OF RISER (psi)	69.270
SAFETY MARGIN (psi)	+85.235 (119.4%)

Hydraulic Information	
Remote Area 4	Light Hazard
OCCUPANCY CLASSIFICATION	0.10 for 1500ft ² (Actual 1622ft ²)
DENSITY (gpm/ft ²)	100.00
QUICK RESPONSE REDUCTION	12
TOTAL HOSE STREAMS	5.6
TOTAL HEADS FLOWING	395.20
TOTAL WATER REQUIRED	43.046
K-FACTOR	395.20
BASE OF RISER (gpm)	120.626
BASE OF RISER (psi)	+11.680 (21.3%)
SAFETY MARGIN (psi)	

Sprinkler Legend-SHEET FP5											
Symbol	Manufacturer	SIN	Model	Quantity	K-Factor	Type	Size	Response	Finish	Temperature	Note
○	Viking	VK300	Microfast	97	5.6	Upright	1/2"	Quick	Brass	200°F	
●	Viking	VK462	Mirage	71	5.6	Pendent	1/2"	Quick	Brass	155°F	WHITE CONCEALED
				Total =	168						



REVISIONS		
NO.	DATE	BY
1		
2		
3		
4		
5		

THIS DRAWING ISSUED FOR:
☐ PRE-BID SCHEMATIC
☐ BID SCHEMATIC
☐ INSTALLATION
☐ AS-BUILT

NICET LEVEL 3
RICK REDDOUT
87042
MISSISSIPPI
CERT. OF RESPONSIBILITY
FIRE SPRINKLER WORK
11643-SC

PERFORMING ARTS CENTER
NORTHWEST MISSISSIPPI COMMUNITY COLLEGE - SENATOBIA, MS
FIRE PROTECTION PLAN

PROJECT NO.: 221030
DRAWN BY: GJO
ISSUE DATE: 10/18/21

SHEET NUMBER
FP5