

NOTE:

PIPE SCHEDULE ~
 1" = SCH. 40
 1 1/4" & LARGER = SCH. 10
 1" THROUGH 3" = BLAZEMASTER CPVC

DESIGN CRITERIA ~
 LIGHT HAZARD AREAS -
 DESIGNED TO DELIVER 0.10 GPM/S.F. OVER THE MOST DEMANDING 1500 S.F.

ORDINARY HAZARD GROUP 1 AREAS -
 DESIGNED TO DELIVER 0.15 GPM/S.F. OVER THE MOST DEMANDING 1500 S.F.

REMOTE AREA REDUCTIONS HAVE BEEN TAKEN WHERE APPLICABLE PER NFPA 13 SEC. 11.2.3.2.3

FIRE CAULKING ~
 ALL FIRE RATED WALLS TO BE CAULKED w/ HILTI FS-ONE FIRE CAULKING AS PER U.L. LISTING FOR WALL TYPE & RATING

AUX. DRAINS ~
 SHALL BE PROVIDED WERE A CHANGE IN PIPING DIRECTION PREVENTS DRAINAGE OF SYSTEM PIPING THROUGH THE MAIN DRAIN VA.

OBSTRUCTIONS ~
 ALL SPRINKLER LOCATIONS TO BE SPACED IN ACCORDANCE w/ OBSTRUCTIONS TO MAINTAIN CLEARANCES - PER NFPA-13 (EXIT SIGNS & SECURITY EQUIPMENT SHALL NOT BE OBSCURED BY FIRE PROTECTION SYSTEM)

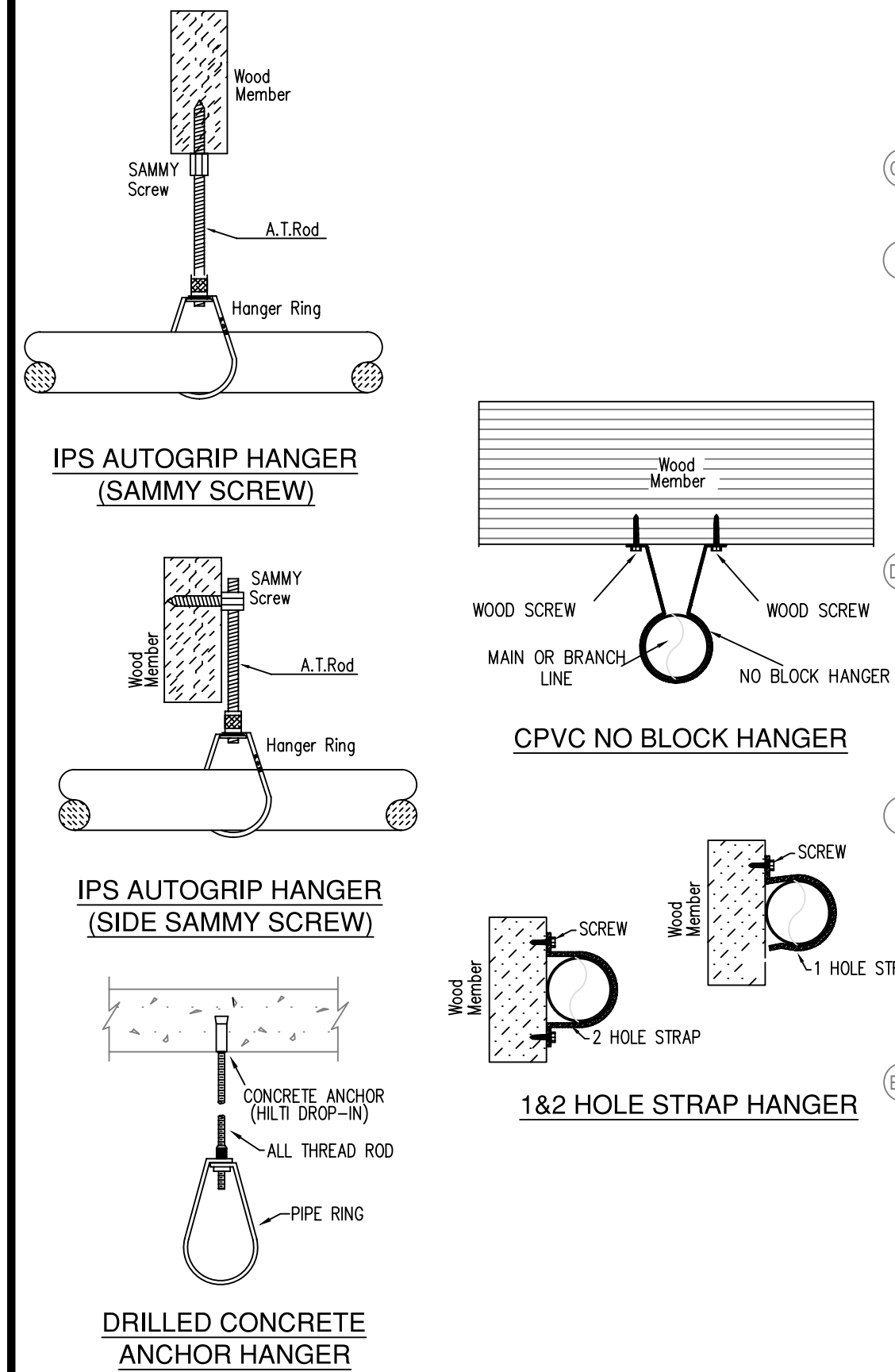
ELEC. EQUIP ~
 PROVIDE SHIELDS OR Baffles WHERE WATER DAMAGE MAY RESULT FROM HEADS TO CLOSE TO ELEC. PANELS

SYMBOLS USED ON DRAWING
 - (ELEVATION) PIPE ELEVATION A.F.F.
 - (B.O.D) PIPE ELEVATION BELOW B.O.D

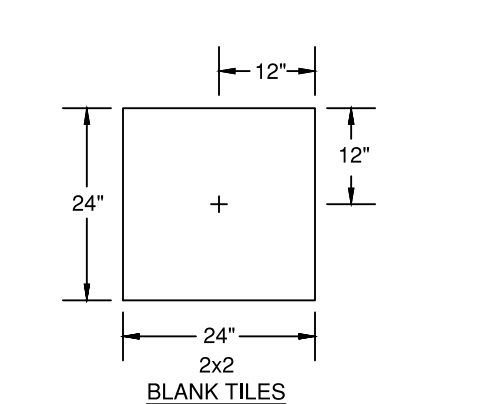
ROOM HAZARD CLASSIFICATION (ALL GHD ROOMS ARE CONSIDERED LIGHT HAZARD UNLESS NOTED)

(H) HYDRAULIC CALCULATION JUNCTION POINT

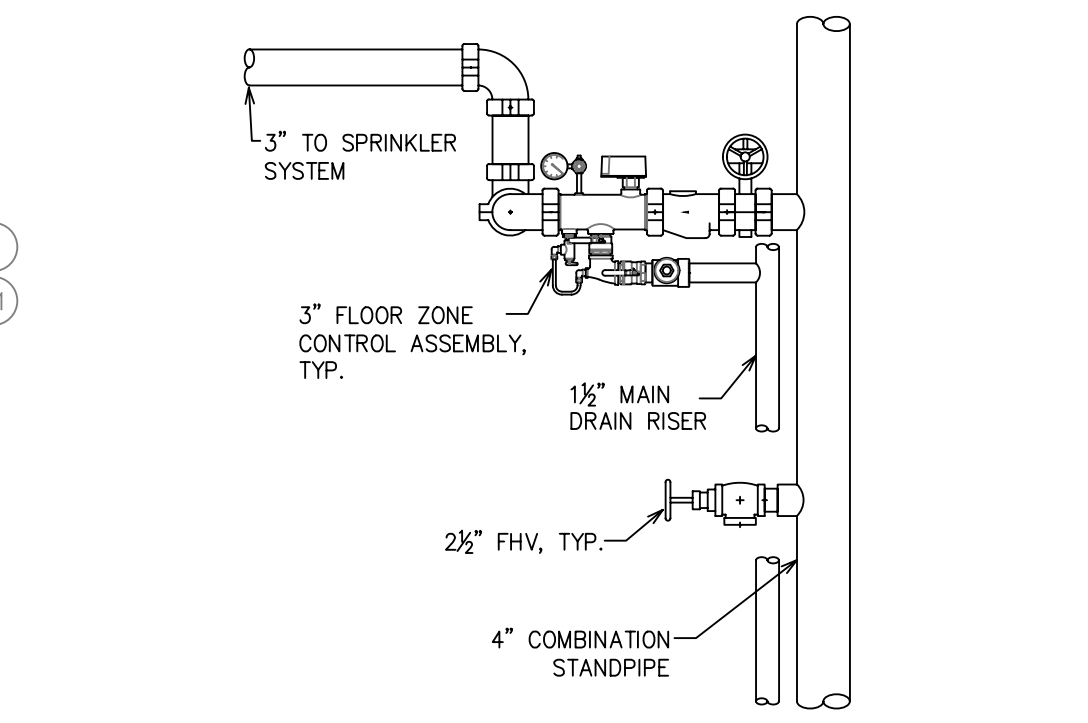
9'-4" CEILING HEIGHT



HANGER DETAILS



SPRINKLER PLACEMENT DETAIL



ZONE CONTROL DETAIL

MANUAL WET STANDPIPE

LOCATION: ROOF STAIR #1&2
 REQUIRED FLOW: 750GPM
 OUTLET PSI: 100
 REQUIRED INLET PSI: 149.4

LEVEL -3 FIRE SPRINKLER PLAN
 SCALE= 1/8" : 1'-0"

SYM	QTY	POSITION	FINISH	TEMP	K	HPY	SN	MFG.	MODEL#	ESCUTCHEON	HEAD BOX (2 min)
376	1	UPRIGHT	BRASS	200	11.20	3/4"	TY5137	TYCO	EC-11	N/A	2
19	1	SIDEWALL	WHITE	155	5.60	1/2"	TY3331	TYCO	TY-FRB	SEMI-RECESS	2
13	1	SIDEWALL	WHITE	200	5.60	1/2"	TY3331	TYCO	TY-FRB	SEMI-RECESS	2
102	1	UPRIGHT	BRASS	155	5.60	1/2"	TY313	TYCO	TY-FRB	N/A	2
15	1	DRY SIDE	CHROME	200	5.60	1"	TY3355	TYCO	DS-1	STANDARD	N/A
928	1	PENDENT	WHITE	155	4.90	1/2"	TY2234	TYCO	LFI	SEMI-RECESS	2
32	1	PENDENT	WHITE	155	5.60	1/2"	TY323	TYCO	TY-FRB	SEMI-RECESS	2
52	1	PENDENT	WHITE	200	5.60	1/2"	TY323	TYCO	TY-FRB	SEMI-RECESS	2
65	1	PENDENT	WHITE	165	5.60	1/2"	RA5994	RELIABLE	LT56C	CONCEALED	2
26	1	PENDENT	WHITE	155	5.60	1/2"	TY3531	TYCO	RFI	CONCEALED	2
248	1	SIDEWALL	WHITE	155	4.90	1/2"	TY2334	TYCO	LFI	SEMI-RECESS	2
9	1	PENDENT	WHITE	160	4.90	1/2"	TY5594	TYCO	LFI	CONCEALED	2
114	1	PENDENT	BRASS	155	4.90	1/2"	RA3516	RELIABLE	F1 RES	N/A	2
46	1	SPRIG	BRASS	155	5.60	1/2"	TY313	TYCO	TY-FRB	N/A	N/A
2	1	DRY SIDE	CHROME	155	5.60	1"	TY3338	TYCO	DS-1 EC	STANDARD	N/A
1	1	SIDEWALL	BRASS	200	11.20	3/4"	TY5332	TYCO	ELOS20	N/A	2
41	1	PENDENT	BRASS	155	5.60	1/2"	TY323	TYCO	TY-FRB	N/A	2

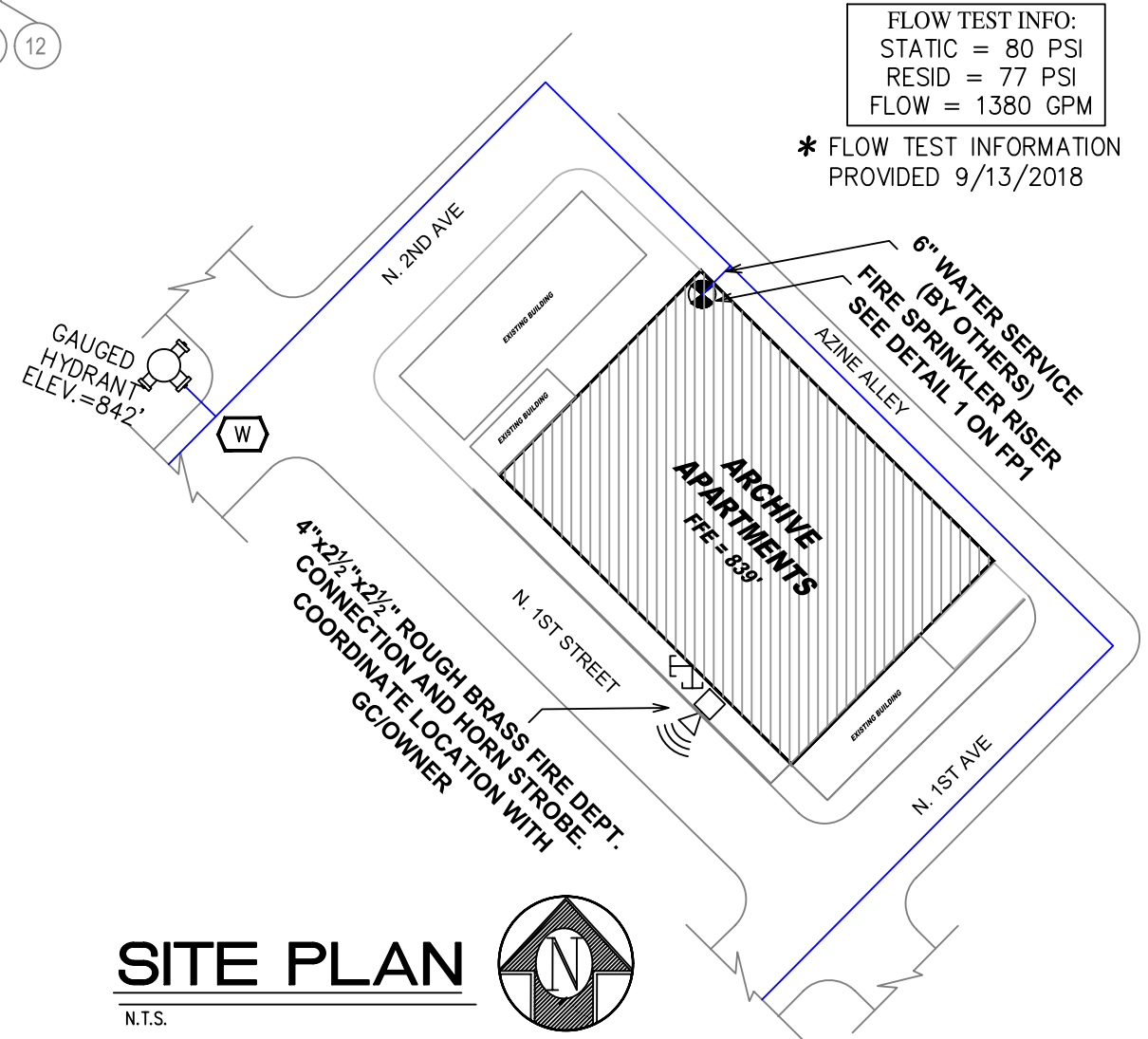
SPRINKLER LEGEND

STEEL PIPE EXCEPT THREADED LIGHTWALL BLAZEMASTER CPVC	NOMINAL PIPE SIZE (IN.)							
	3/4"	1"	1 1/4"	1 1/2"	2"	2 1/2"	3"	4"
	12-0	12-0	12-0	15-0	15-0	15-0	15-0	15-0
	5-6	6-0	6-6	7-0	8-0	9-0	10-0	15-0

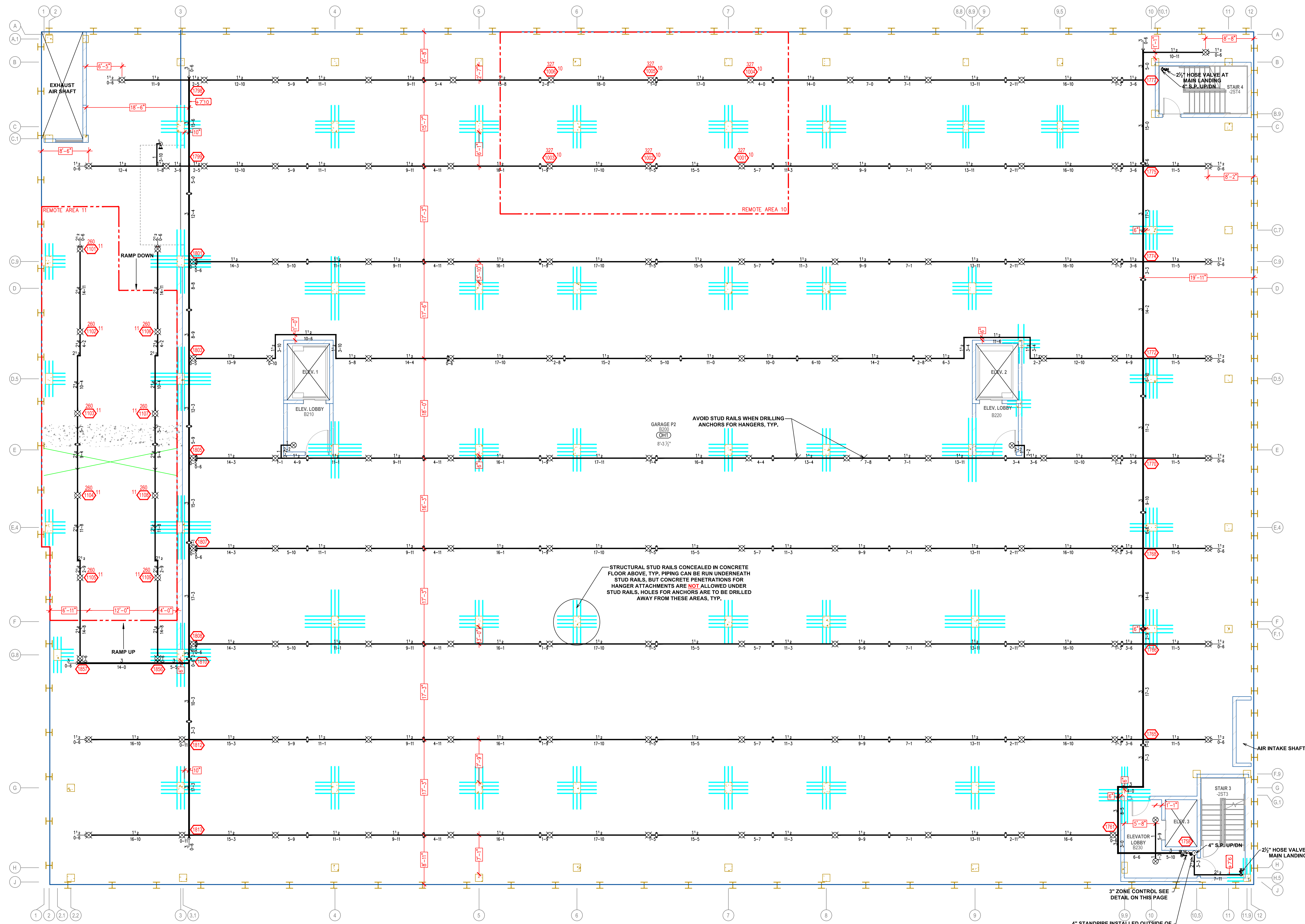
NFPA 13 HANGER SPACING

ZONE LEGEND	COVERAGE AREA (F ²)	ELEVATION FROM GRADE
LEVEL-3 (ZONE #3)	34,866 (F ²)	-29'11"
LEVEL-2 (ZONE #2)	32,879 (F ²)	-20'11 1/2"
LEVEL-1 (ZONE #1)	33,135 (F ²)	-12'0"
1ST FLOOR & MEZZ. WEST (ZONE #4)	15,847 (F ²)	15'±0" MEZZ=10'-0"
1ST FLOOR & MEZZ. EAST (ZONE #5)	18,418 (F ²)	15'±0" MEZZ=10'-0"
2ND FLOOR (ZONE #6)	24,924 (F ²)	20'-0"
3RD FLOOR (ZONE #7)	24,924 (F ²)	30'7 1/2"
4ND FLOOR (ZONE #8)	24,924 (F ²)	41'3"
5TH FLOOR (ZONE #9)	24,924 (F ²)	51'10 1/2"
6TH FLOOR (ZONE #9)	24,924 (F ²)	62'6 1/4"
ROOF MECH PENHOUSE (ZONE #9)	1,040 (F ²)	75'1 1/4"

PIPE LEGEND
 - BLACK STEEL SPRINKLER PIPING
 - CPVC SPRINKLER PIPING



SITE PLAN



LEVEL -2 FIRE SPRINKLER PLAN
SCALE= 1/8" = 1'-0"

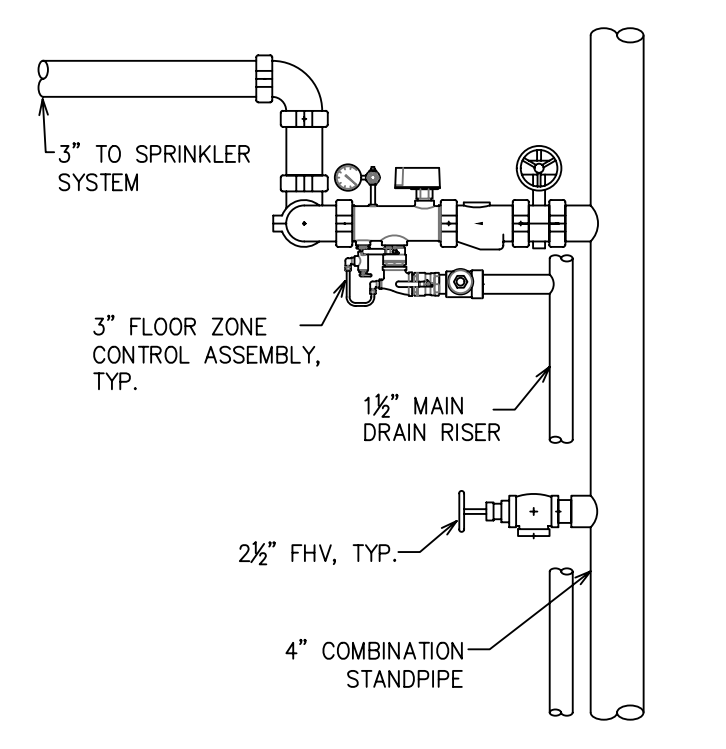
SYM	CNT	POSITION	FINISH	TEMP	K	NPY	SIN	MFG	MODEL#	ESCUTCHEON	HEAD BOX (2 min)
376	UPRIGHT	BRASS	200	11.20	3/4"	TY5137	TYCO	EC-11	N/A	2	
19	SIDEWALL	WHITE	155	5.60	1/2"	TY3331	TYCO	TY-FRB	SEMI-RECESS	2	
13	SIDEWALL	WHITE	200	5.60	1/2"	TY3331	TYCO	TY-FRB	SEMI-RECESS	2	
102	UPRIGHT	BRASS	155	5.60	1/2"	TY313	TYCO	TY-FRB	N/A	2	
15	DRY SIDE	CHROME	200	5.60	1"	TY3355	TYCO	DS-1	STANDARD	N/A	
928	PENDENT	WHITE	155	4.90	1/2"	TY2234	TYCO	LFI	SEMI-RECESS	2	
32	PENDENT	WHITE	155	5.60	1/2"	TY323	TYCO	TY-FRB	SEMI-RECESS	2	
52	PENDENT	WHITE	200	5.60	1/2"	TY323	TYCO	TY-FRB	SEMI-RECESS	2	
85	PENDENT	WHITE	165	5.60	1/2"	RA5994	RELIABLE	LT56C	CONCEALED	2	
26	PENDENT	WHITE	155	5.60	1/2"	TY3531	TYCO	RFI	CONCEALED	2	
248	SIDEWALL	WHITE	155	4.40	1/2"	TY2334	TYCO	LFI	SEMI-RECESS	2	
9	PENDENT	WHITE	160	4.90	1/2"	TY3596	TYCO	LFI	CONCEALED	2	
114	PENDENT	BRASS	155	4.90	1/2"	RA3018	RELIABLE	F1 RES	N/A	2	
46	SPRIG	BRASS	155	5.60	1/2"	TY313	TYCO	TY-FRB	N/A	N/A	
2	DRY SIDE	CHROME	155	5.60	1"	TY3338	TYCO	DS-1 EC	STANDARD	N/A	
1	SIDEWALL	BRASS	200	11.20	3/4"	TY5332	TYCO	ELOS20	N/A	2	
41	PENDENT	BRASS	155	5.60	1/2"	TY323	TYCO	TY-FRB	N/A	2	
2,089 TOTAL HEADS											

SPRINKLER LEGEND

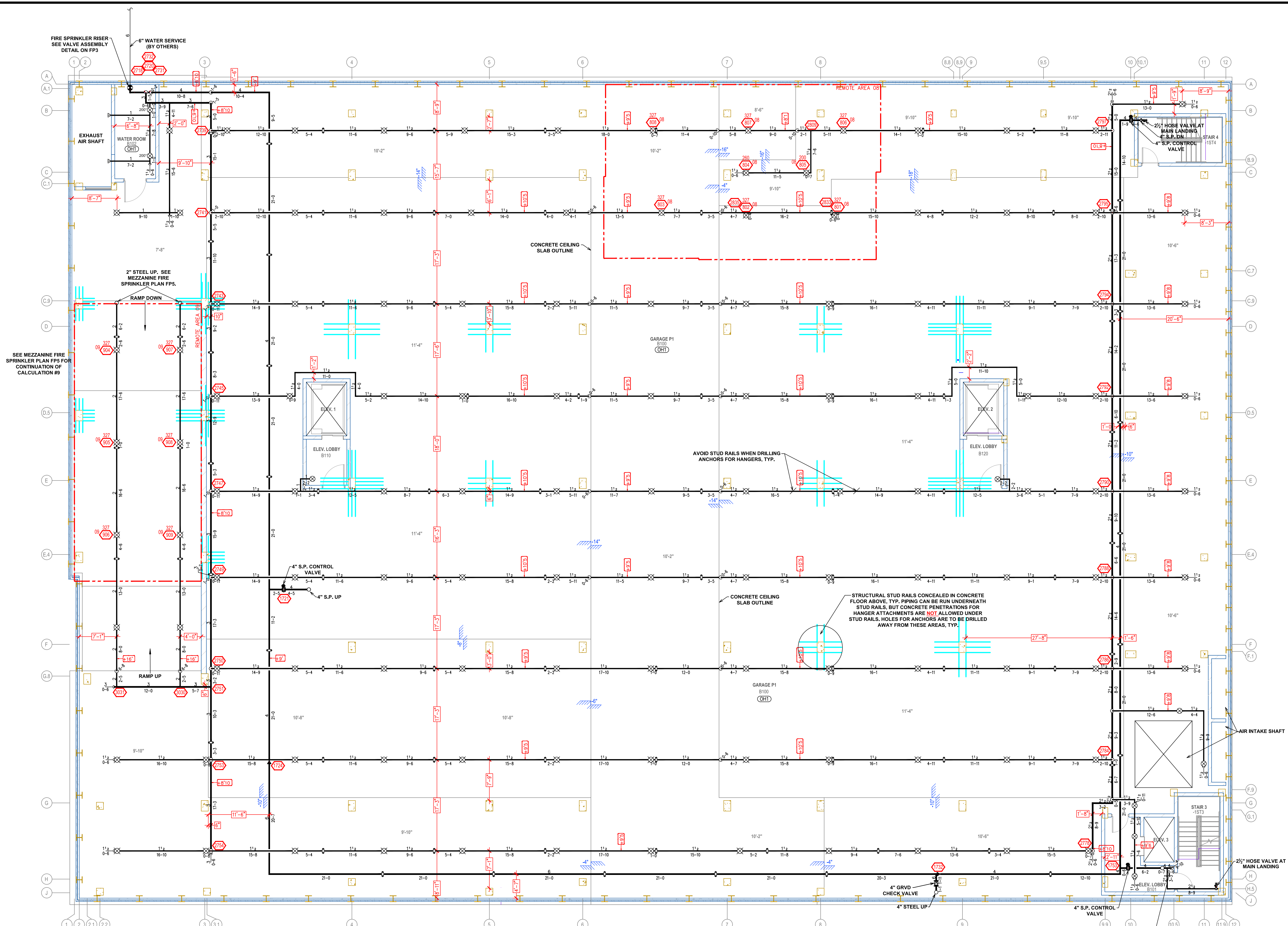
PIPE LEGEND	
	BLACK STEEL SPRINKLER PIPING
	CPVC SPRINKLER PIPING

CALC PLACARD

Design Area #:	HAZARD:	NOTE:
10	OH1	1500 S.F. NOT REDUCED DUE TO STANDARD RESPONSE SPRINKLERS
Zone: 2 System Type: WET Location: GARAGE P2 B200		
Flowing Outlets: 6	Remote Area: 1706	
Density: 0.15	Flow 546.1 gpm @ 47.3 psi	
Calculation Safety: 32.2 psi	Includes 250 gpm hose allowance	
9	OH1	1500 S.F. NOT REDUCED DUE TO STANDARD RESPONSE SPRINKLERS
Zone: 2 System Type: WET Location: RAMP P2 B200		
Flowing Outlets: 9	Remote Area: 1645	
Density: 0.15	Flow 645.9 gpm @ 61.9 psi	
Calculation Safety: 17.3 psi	Includes 250 gpm hose allowance	



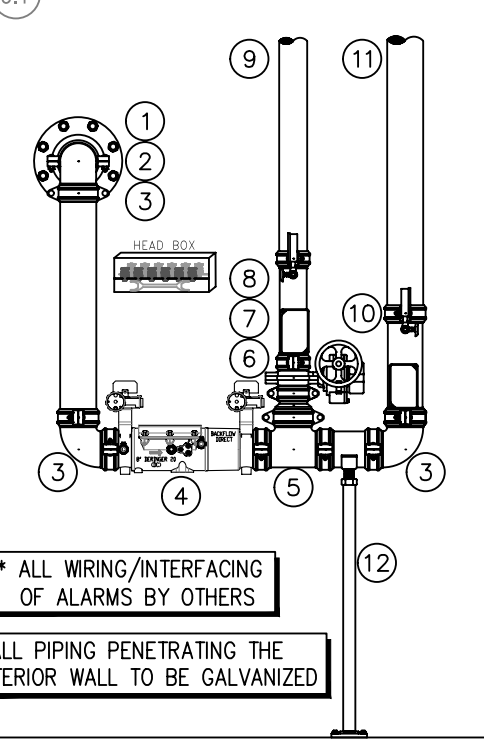
ZONE CONTROL DETAIL



LEVEL -1 FIRE SPRINKLER PLAN
SCALE= 1/8" : 1'-0"

SYM	QTY	POSITION	FINISH	TEMP	K	NPT	SN	MPG	MODEL #	ESCU/OTHER	HEAD BOX (2 min)
1376	1	UPRIGHT	BRASS	200	11.20	3/4"	TY9137	TYCO	EC-11	N/A	2
19	1	SIDEWALL	WHITE	155	5.60	1/2"	TY3331	TYCO	TY-FRB	SEM-RECESS	2
13	1	SIDEWALL	WHITE	200	5.60	1/2"	TY3331	TYCO	TY-FRB	SEM-RECESS	2
102	1	UPRIGHT	BRASS	155	5.60	1/2"	TY3313	TYCO	TY-FRB	N/A	2
15	1	DRY SIDE	CHROME	200	5.60	1"	TY3355	TYCO	DS-1	STANDARD	N/A
928	1	PENDENT	WHITE	155	4.90	1/2"	TY2234	TYCO	LFI	SEM-RECESS	2
32	1	PENDENT	WHITE	155	5.60	1/2"	TY3233	TYCO	TY-FRB	SEM-RECESS	2
52	1	PENDENT	WHITE	200	5.60	1/2"	TY3233	TYCO	TY-FRB	SEM-RECESS	2
65	1	PENDENT	WHITE	165	5.60	1/2"	RA5994	RELIABLE	LT56C	CONCEALED	2
26	1	PENDENT	WHITE	155	5.60	1/2"	TY3531	TYCO	RPI	CONCEALED	2
248	1	SIDEWALL	WHITE	155	4.40	1/2"	TY2334	TYCO	LFI	SEM-RECESS	2
9	1	PENDENT	WHITE	160	4.90	1/2"	TY3596	TYCO	LFI	CONCEALED	2
114	1	PENDENT	BRASS	155	4.90	1/2"	RA3516	RELIABLE	F1 RES	N/A	2
46	1	SPRIG	BRASS	155	5.60	1/2"	TY3133	TYCO	TY-FRB	N/A	N/A
2	1	DRY SIDE	CHROME	155	5.60	1"	TY3338	TYCO	DS-1 EC	STANDARD	N/A
1	1	SIDEWALL	BRASS	200	11.20	3/4"	TY3332	TYCO	ELDSW2D	N/A	2
41	1	PENDENT	BRASS	155	5.60	1/2"	TY3233	TYCO	TY-FRB	N/A	2
2,089 TOTAL HEADS											

SPRINKLER LEGEND



VALVE ASSEMBLY DETAIL

RISER LEGEND

- 6" UNDERGROUND WATER SERVICE (BY OTHERS) FOLLOWING & TESTING OF THE UNDERGROUND SHALL BE COMPLETED PRIOR TO THE SPRINKLER SYSTEM HOOKUP. UNDERGROUND PAPERS ARE TO BE SUPPLIED TO THE TYPICAL CONTRACTOR BY THE C.C.
- 6"x4" GROOVED CONC. REDUCER
- 4" GROOVED 90 ELBOW
- 4" AMES OILT COOL BACKFLOW GAG BEV w/ TAMPER
- 4" GROOVED TEE
- 4"x3" GROOVED CONC. REDUCER
- 3" GROOVED BUTTERFLY VALVE w/ TAMPER
- 3" GROOVED COMMERCIAL RISER MANIFOLD w/ FLOW SWITCH, PRESSURE GAUGE, & TEST AND DRAIN
- 3" GROOVED -1 GARAGE SYSTEM
- 4" GROOVED COMMERCIAL RISER MANIFOLD w/ FLOW SWITCH, PRESSURE GAUGE, & TEST AND DRAIN
- 4" TO COMBINED STANDPIPE SYSTEM
- PIPE STAND

PIPE LEGEND	
	BLACK STEEL SPRINKLER PIPING
	CPVC SPRINKLER PIPING

CALC PLACARD

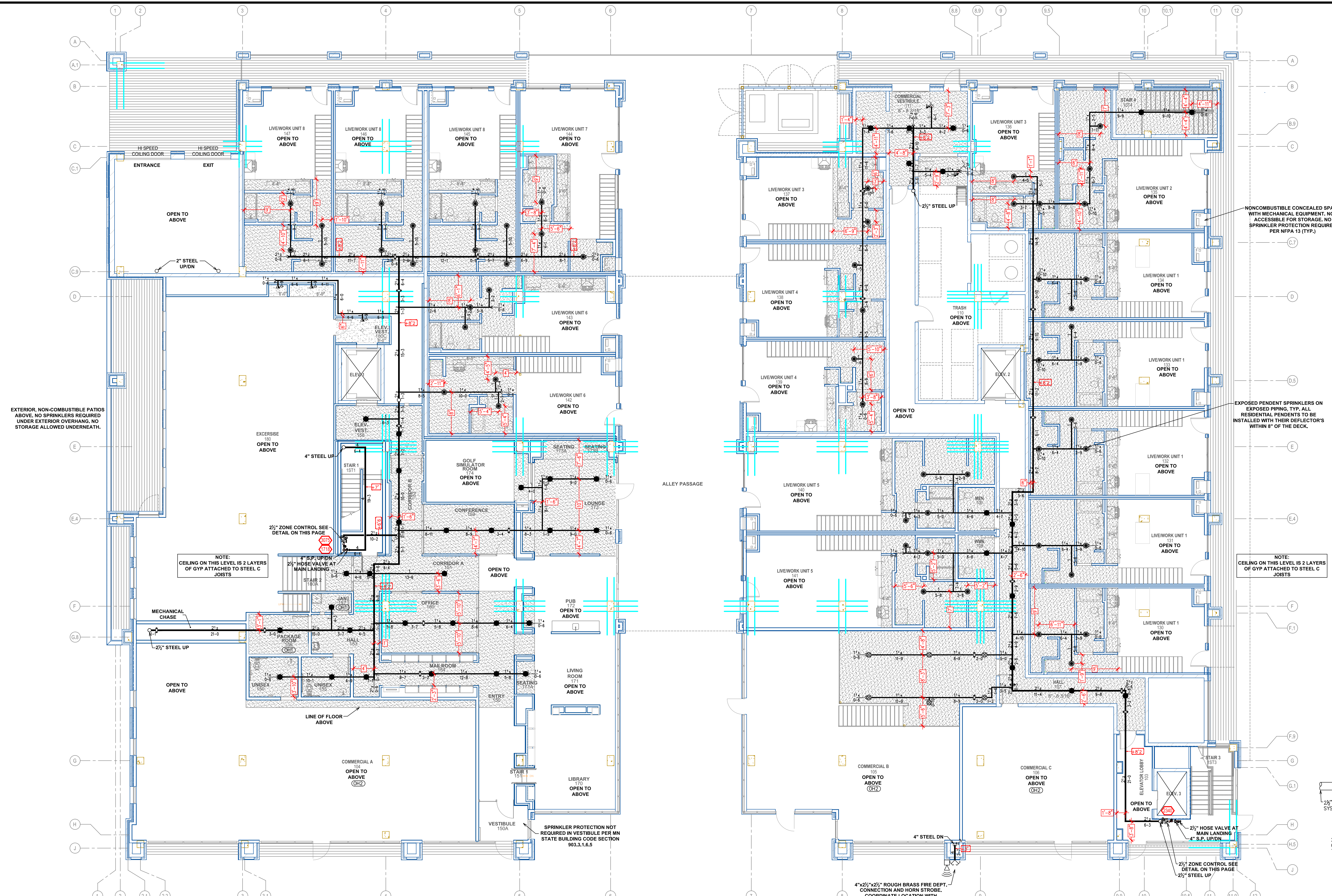
Design Area # 08 HAZARD:DH1
Zone: 1 System Type:WET
Location: GARAGE P1 B100
Flowing Outlets:8
Density: 0.15 Remote Area: 1710
Flow 857.2 gpm @ 70.1 psi
Calculation Safety: 9.1 psi
Includes 250 gpm Hose allowance

Design Area # 09 HAZARD:DH1
Zone: 1 System Type:WET
Location: RAMP P1 B100
Flowing Outlets:9
Density: 0.15 Remote Area: 1527
Flow 840.8 gpm @ 70.1 psi
Calculation Safety: 9.2 psi
Includes 250 gpm Hose allowance

NOTE: 1500 S.F. NOT REDUCED DUE TO STANDARD RESPONSE SPRINKLERS

NOTE: 1500 S.F. NOT REDUCED DUE TO STANDARD RESPONSE SPRINKLERS





1ST FLOOR FIRE SPRINKLER PLAN
SCALE: 1/8" = 1'-0"

ZONE CONTROL DETAIL

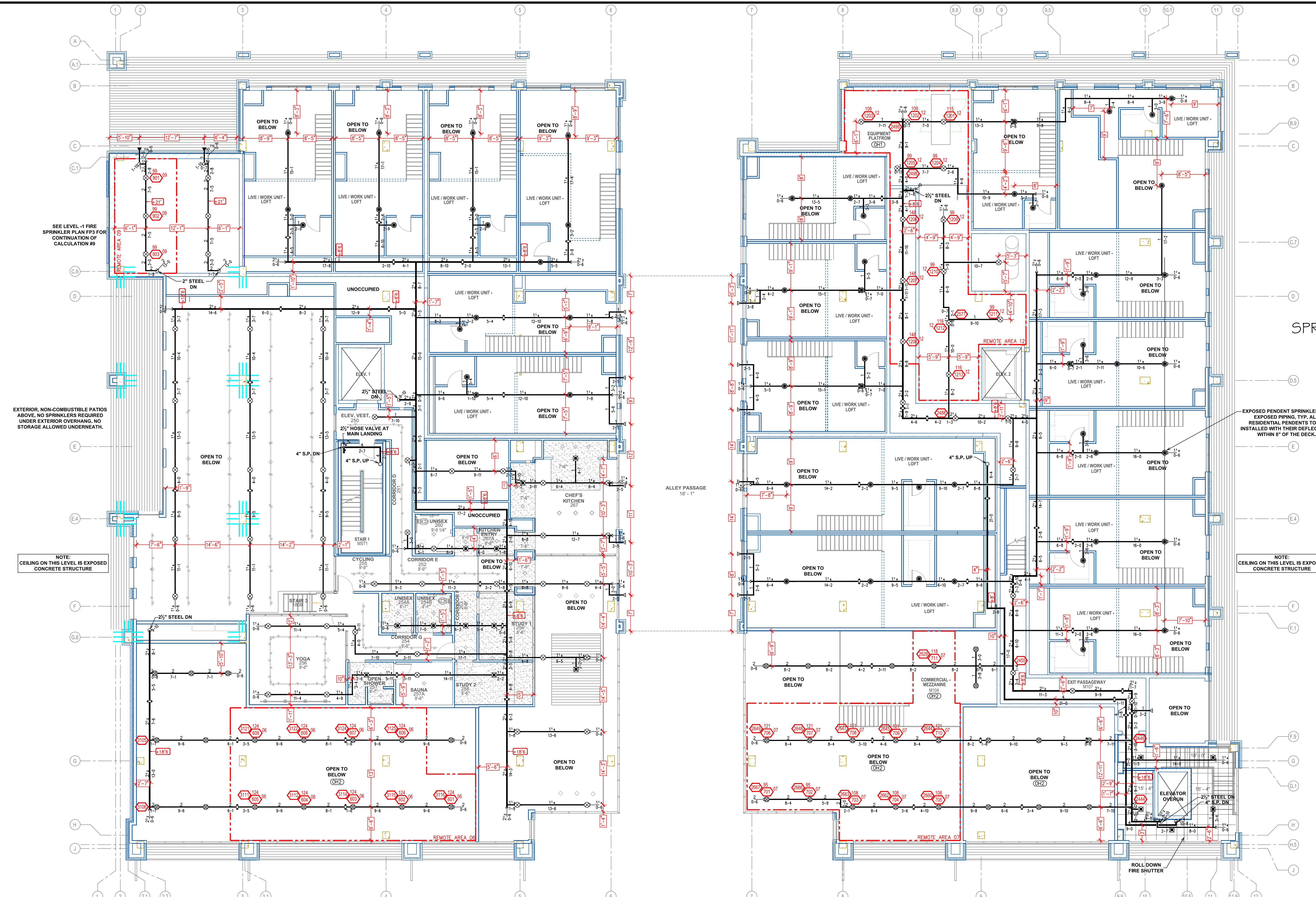
SYM	QTY	POSITION	FINISH	TEMP	K	NPT	SN	MFG.	MODEL#	ESD/CHRON	HEAD BOX (2 min)
376	1	UPRIGHT	BRASS	200	11.20	3/4"	TY5137	TYCO	EC-11	N/A	2
19	1	SIDEWALL	WHITE	155	5.60	1/2"	TY3331	TYCO	TY-FRB	SEMI-RECESS	2
13	1	SIDEWALL	WHITE	200	5.60	1/2"	TY3331	TYCO	TY-FRB	SEMI-RECESS	2
102	1	UPRIGHT	BRASS	155	5.60	1/2"	TY313	TYCO	TY-FRB	N/A	2
15	1	DRY SIDE	CHROME	200	5.60	1"	TY3355	TYCO	DS-1	STANDARD	N/A
928	1	PENDENT	WHITE	155	4.90	1/2"	TY2234	TYCO	LFPI	SEMI-RECESS	2
32	1	PENDENT	WHITE	155	5.60	1/2"	TY323	TYCO	TY-FRB	SEMI-RECESS	2
52	1	PENDENT	WHITE	200	5.60	1/2"	TY323	TYCO	TY-FRB	SEMI-RECESS	2
65	1	PENDENT	WHITE	165	5.60	1/2"	RA5994	RELIABLE	LT56C	CONCEALED	2
26	1	PENDENT	WHITE	155	5.60	1/2"	TY3531	TYCO	RPI	CONCEALED	2
248	1	SIDEWALL	WHITE	155	4.40	1/2"	TY2334	TYCO	LFPI	SEMI-RECESS	2
9	1	PENDENT	WHITE	160	4.90	1/2"	TY3596	TYCO	LFPI	CONCEALED	2
114	1	PENDENT	BRASS	155	4.90	1/2"	RA3516	RELIABLE	F1 RES	N/A	2
46	1	SPRIG	BRASS	155	5.60	1/2"	TY313	TYCO	TY-FRB	N/A	2
2	1	DRY SIDE	CHROME	155	5.60	1"	TY3338	TYCO	DS-1 EC	STANDARD	N/A
1	1	SIDEWALL	BRASS	200	11.20	3/4"	TY3332	TYCO	ELOS920	N/A	2
41	1	PENDENT	BRASS	155	5.60	1/2"	TY323	TYCO	TY-FRB	N/A	2

2,089 TOTAL HEADS

PIPE LEGEND	
	BLACK STEEL SPRINKLER PIPING
	CPVC SPRINKLER PIPING



910 N. SYCAMORE AVENUE; SIOUX FALLS, SD 57110 PHONE: (605)-444-9290



MEZZANINE FIRE SPRINKLER PLAN
SCALE= 1/8" : 1'-0"

SYM	CNT	POSITION	FINISH	TEMP	K	NPT	SIN	MFG.	MODEL #	ESCUTOHEON	HEAD	BOX (2 min)
376		UPRIGHT	BRASS	200	11.20	3/4"	TY9137	TYCO	EC-11	N/A	2	
19		SIDEWALL	WHITE	155	5.60	1/2"	TY3331	TYCO	TY-FRB	SEMI-RECESS	2	
13		SIDEWALL	WHITE	200	5.60	1/2"	TY3331	TYCO	TY-FRB	SEMI-RECESS	2	
102		UPRIGHT	BRASS	155	5.60	1/2"	TY313	TYCO	TY-FRB	N/A	2	
15		DRY SIDE	CHROME	200	5.60	1"	TY3355	TYCO	DS-1	STANDARD	N/A	
928		PENDENT	WHITE	155	4.90	1/2"	TY2234	TYCO	LF1	SEMI-RECESS	2	
52		PENDENT	WHITE	155	5.60	1/2"	TY323	TYCO	TY-FRB	SEMI-RECESS	2	
52		PENDENT	WHITE	200	5.60	1/2"	TY323	TYCO	TY-FRB	SEMI-RECESS	2	
65		PENDENT	WHITE	165	5.60	1/2"	RA5994	RELIABLE	LT56C	CONCEALED	2	
26		PENDENT	WHITE	155	5.60	1/2"	TY3531	TYCO	RF1	CONCEALED	2	
248		SIDEWALL	WHITE	155	4.40	1/2"	TY2334	TYCO	LF1	SEMI-RECESS	2	
9		PENDENT	WHITE	160	4.90	1/2"	TY3596	TYCO	LF1	CONCEALED	2	
114		PENDENT	BRASS	155	4.90	1/2"	RA3516	RELIABLE	F1 RES	N/A	2	
46		SPRIG	BRASS	155	5.60	1/2"	TY313	TYCO	TY-FRB	N/A	N/A	
2		DRY SIDE	CHROME	155	5.60	1"	TY3338	TYCO	DS-1 EC	STANDARD	N/A	
1		SIDEWALL	BRASS	200	11.20	3/4"	TY5332	TYCO	EL05W20	N/A	2	
41		PENDENT	BRASS	155	5.60	1/2"	TY323	TYCO	TY-FRB	N/A	2	

2,089 TOTAL HEADS

PIPE LEGEND	
	BLACK STEEL SPRINKLER PIPING
	CPVC SPRINKLER PIPING

SPRINKLER LEGEND

HAZARD: OH2

Design Area #: 06
Zone: 4
System Type: WET
Location: COMMERCIAL A 104

Flowing Outlets: 9
Density: 0.20
Remote Area: 1107
Flow 480.4 gpm @ 69.7 psi
Calculation Safety: 9.9 psi
Includes 250 gpm Hose allowance

HAZARD: OH2

Design Area #: 07
Zone: 5
System Type: WET
Location: COMMERCIAL B 105

Flowing Outlets: 11
Density: 0.20
Remote Area: 1109
Flow 523.8 gpm @ 58.5 psi
Calculation Safety: 21 psi
Includes 250 gpm Hose allowance

NOTE: 1500 S.F. REDUCED BY 26.5% TO 1103 S.F. PER NFPA 13 FIG. 11.2.3.2.3.1 DUE TO THE USE OF QUICK RESPONSE SPRINKLERS AND A 19'-0" CEILING HEIGHT

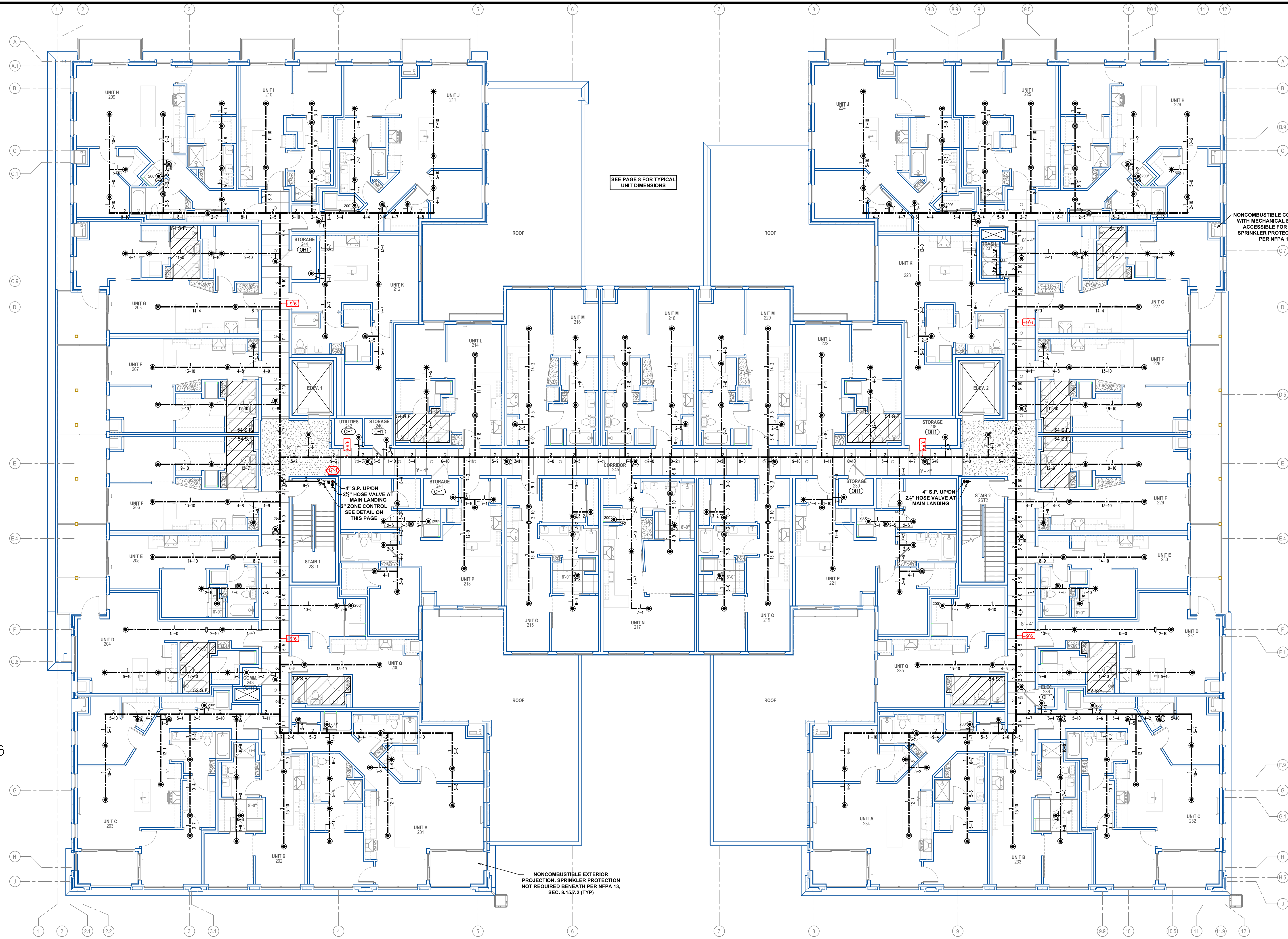
HAZARD: OH1

Design Area #: 12
Zone: 5
System Type: WET
Location: TRASH 110

Flowing Outlets: 13
Density: 0.15
Remote Area: 1109
Flow 505.5 gpm @ 72.6 psi
Calculation Safety: 6.9 psi
Includes 250 gpm Hose allowance

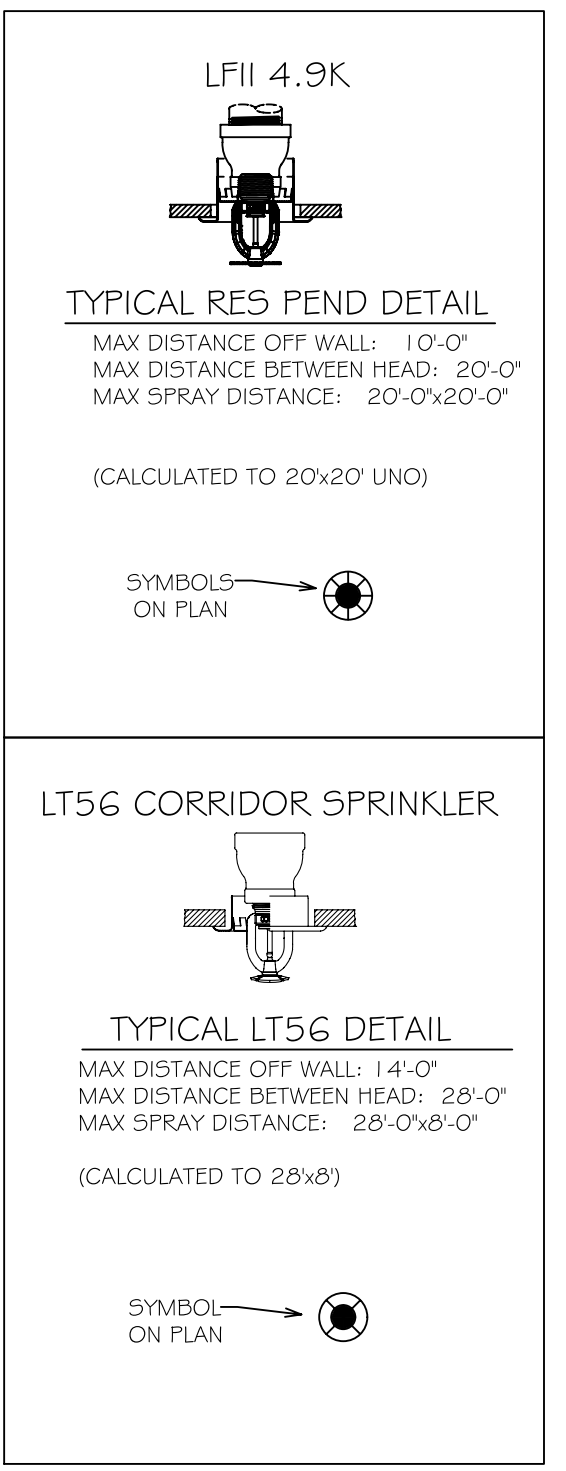
NOTE: 1500 S.F. REDUCED BY 26.5% TO 1103 S.F. PER NFPA 13 FIG. 11.2.3.2.3.1 DUE TO THE USE OF QUICK RESPONSE SPRINKLERS AND A 19'-0" CEILING HEIGHT



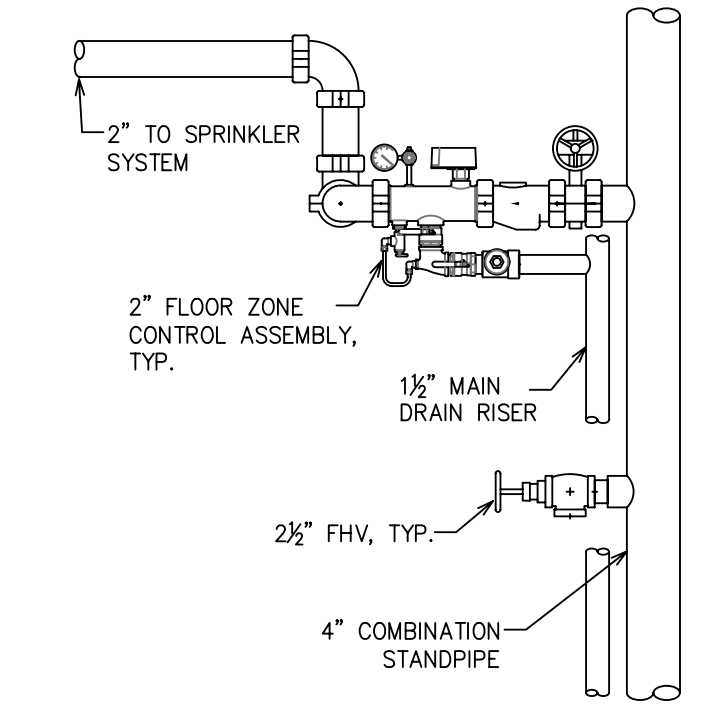


2ND FLOOR FIRE SPRINKLER PLAN
SCALE= 1/8" = 1'-0"

- RESIDENTIAL NOTES:**
- PER STATE FIRE CODE AMENDMENTS 903.3.1.6.A SPRINKLERS ARE NOT REQUIRED IN LINEN CLOSETS AND PANTRIES WITHIN DWELLING UNITS THAT MEET THE FOLLOWING:
 - THE AREA OF THE SPACE DOES NOT EXCEED 12 S.F.
 - THE LEAST DIMENSION DOES NOT EXCEED 3 FEET
 - THE WALLS AND CEILING ARE SURFACED WITH NONCOMBUSTIBLE MATERIALS AND
 - THE CLOSET OR PANTRY CONTAINS NO MECHANICAL EQUIPMENT, ELECTRICAL EQUIPMENT, OR ELECTRICAL APPLIANCES
 - SPRINKLERS NOT REQUIRED IN WOOD TRUSS SPACE OR SOLID WOOD JOIST SPACE (FLOOR/CEILING SPACE) FILLED WITH NONCOMBUSTIBLE INSULATION PER NFPA 13, SECTION 8.15.1.2.7
 - SPRINKLERS NOT REQUIRED IN BATHROOMS WITHIN DWELLING UNITS THAT DO NOT EXCEED 55 S.F. IN AREA AND THE WALLS AND CEILING ARE SURFACED WITH NONCOMBUSTIBLE MATERIALS PER NFPA 13, SECTION 8.15.8.1.1
 - SPRINKLERS NOT REQUIRED WHERE CANOPIES, ROOFS, PORTE-COCHERES, BALCONIES, DECKS, OR SIMILAR PROJECTIONS ARE CONSTRUCTED WITH MATERIALS THAT ARE NONCOMBUSTIBLE, LIMITED COMBUSTIBLE, OR FIRE RETARDANT PER NFPA 13, SECTION 8.15.7.2



SPRINKLER SPACING DETAILS



ZONE CONTROL DETAIL

SYM	UNIT	POSITION	FINISH	TEMP	TK	NPT	SRN	MFC	MODEL#	ESCALATION	HEAD BOX (2 min)
376	UPRIGHT	BRASS	200	11.20	3/4"	TY313	TYCO	EC-11	N/A	2	
19	SIDEWALL	WHITE	155	5.60	1/2"	TY3331	TYCO	TY-FRB	SEMI-RECESS	2	
113	SIDEWALL	WHITE	200	5.60	1/2"	TY3331	TYCO	TY-FRB	SEMI-RECESS	2	
102	UPRIGHT	BRASS	155	5.60	1/2"	TY313	TYCO	TY-FRB	N/A	2	
15	DRY SIDE	CHROME	200	5.60	1"	TY3355	TYCO	DS-1	STANDARD	N/A	
108	PENDENT	WHITE	155	4.90	1/2"	TY2234	TYCO	LFII	SEMI-RECESS	2	
32	PENDENT	WHITE	155	5.60	1/2"	TY323	TYCO	TY-FRB	SEMI-RECESS	2	
52	PENDENT	WHITE	200	5.60	1/2"	TY323	TYCO	TY-FRB	SEMI-RECESS	2	
65	PENDENT	WHITE	155	5.60	1/2"	RA5994	RELIABLE	LT56C	CONCEALED	2	
26	PENDENT	WHITE	155	5.60	1/2"	TY3331	TYCO	RFII	CONCEALED	2	
248	SIDEWALL	WHITE	155	4.40	1/2"	TY2334	TYCO	LFII	SEMI-RECESS	2	
5	PENDENT	WHITE	160	4.90	1/2"	TY3596	TYCO	LFII	CONCEALED	2	
114	PENDENT	BRASS	155	4.90	1/2"	RA3516	RELIABLE	F1 RES	N/A	2	
46	SPRIG	BRASS	155	5.60	1/2"	TY313	TYCO	TY-FRB	N/A	N/A	
2	DRY SIDE	CHROME	155	5.60	1"	TY3338	TYCO	DS-1 EC	STANDARD	N/A	
1	SIDEWALL	WHITE	200	11.20	3/4"	TY3332	TYCO	ELOS20	N/A	2	
41	PENDENT	BRASS	155	5.60	1/2"	TY323	TYCO	TY-FRB	N/A	2	
2,089 TOTAL HEADS											

SPRINKLER LEGEND

PIPE LEGEND

	BLACK STEEL SPRINKLER PIPING
	CPVC SPRINKLER PIPING